

Data Path : Z:\voasrv\HPCHEM1\MSVOA_X\Data\VX100225\
 Data File : VX047964.D
 Acq On : 02 Oct 2025 13:48
 Operator : JC/MD
 Sample : Q3246-07
 Misc : 5.0mL/MSVOA_X/WATER
 ALS Vial : 13 Sample Multiplier: 1

Instrument :
 MSVOA_X
 ClientSampleId :
 BP-VPB-184-GW-540-542

Integration Parameters: RTEINT.P
 Integrator: RTE
 Smoothing : ON Filtering: 5
 Sampling : 1 Min Area: 3 % of largest Peak
 Start Thrs: 0.2 Max Peaks: 100
 Stop Thrs : 0 Peak Location: TOP

If leading or trailing edge < 100 prefer < Baseline drop else tangent >
 Peak separation: 5

Method : Z:\voasrv\HPCHEM1\MSVOA_X\Method\82X091625W.M
 Title : SW846 8260

Signal : TIC: VX047964.D\data.ms

peak #	R.T. min	first scan	max scan	last scan	PK TY	peak height	corr. area	corr. % max.	% of total
1	1.459	55	61	65	rBV	7662	9709	1.09%	0.196%
2	2.380	206	212	218	rBV2	4997	9134	1.02%	0.184%
3	3.111	323	332	342	rBV2	18466	46727	5.22%	0.942%
4	5.373	691	703	720	rBV2	88887	292127	32.66%	5.887%
5	5.544	720	731	752	rVB	131166	407238	45.53%	8.207%
6	5.946	786	797	825	rBV	100876	304090	34.00%	6.128%
7	6.751	918	929	947	rBV	248566	648673	72.53%	13.073%
8	8.635	1231	1238	1258	rBV	508167	826594	92.42%	16.658%
9	10.037	1462	1468	1486	rBV	608940	875077	97.84%	17.635%
10	10.842	1595	1600	1606	rBV2	6429	9201	1.03%	0.185%
11	11.067	1631	1637	1649	rBV	452442	628872	70.31%	12.674%
12	11.915	1771	1776	1781	rBV2	7305	10266	1.15%	0.207%
13	12.006	1785	1791	1801	rBV	676888	894378	100.00%	18.024%

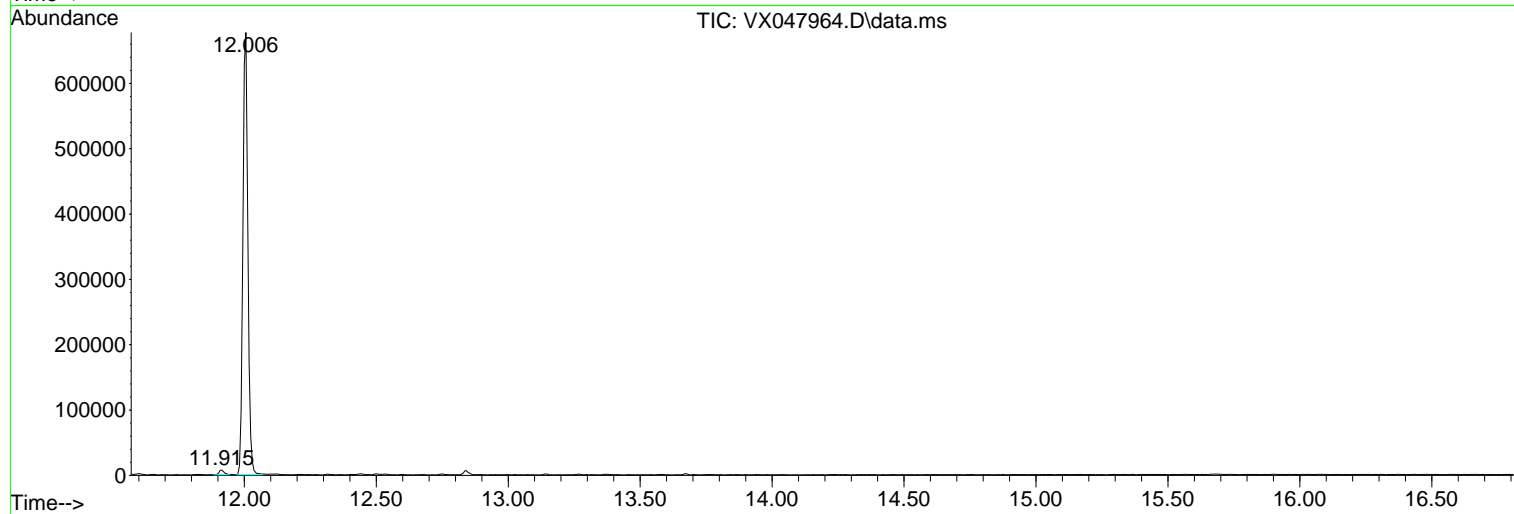
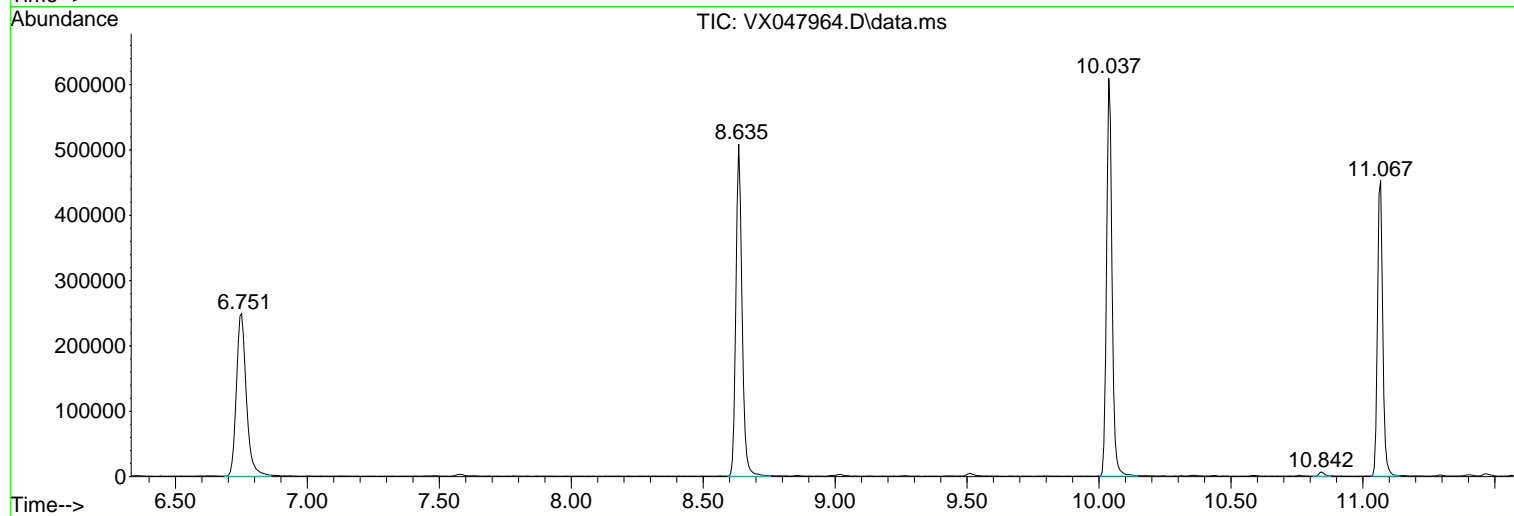
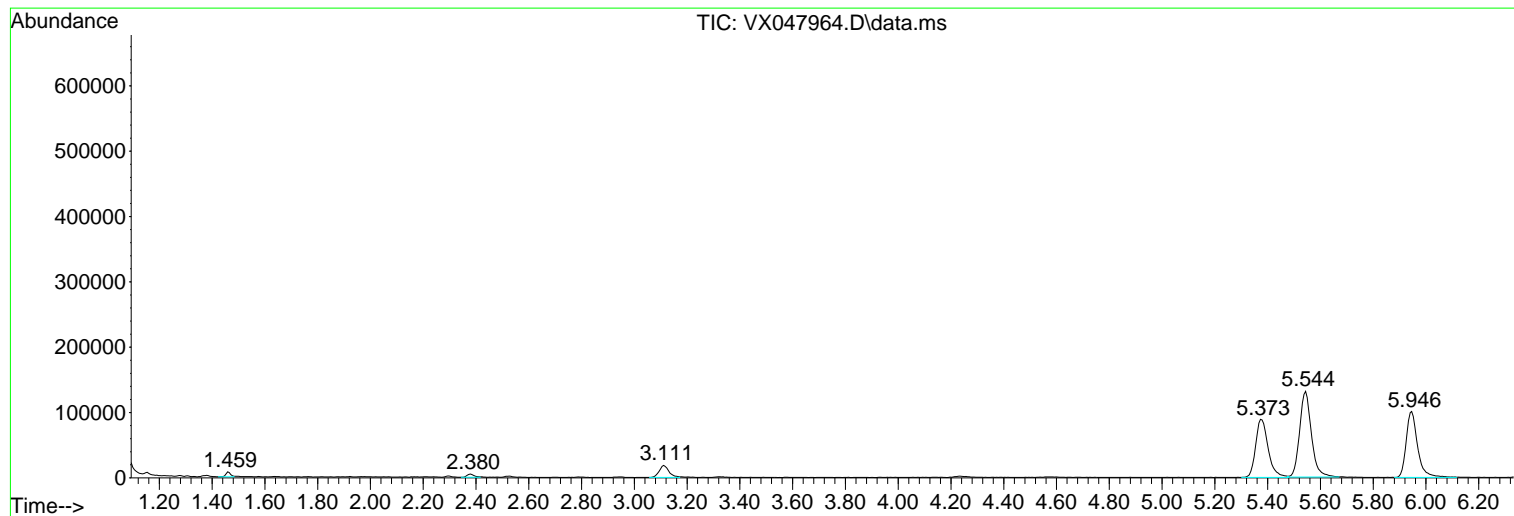
Sum of corrected areas: 4962086

Data Path : Z:\voasrv\HPCHEM1\MSVOA_X\Data\VX100225\
Data File : VX047964.D
Acq On : 02 Oct 2025 13:48
Operator : JC/MD
Sample : Q3246-07
Misc : 5.0mL/MSVOA_X/WATER
ALS Vial : 13 Sample Multiplier: 1

Instrument :
MSVOA_X
ClientSampleId :
BP-VPB-184-GW-540-542

Quant Method : Z:\voasrv\HPCHEM1\MSVOA_X\Method\82X091625W.M
Quant Title : SW846 8260

TIC Library : C:\Database\NIST20.L
TIC Integration Parameters: LSCINT.P



Library Search Compound Report

Data Path : Z:\voasrv\HPCHEM1\MSVOA_X\Data\VX100225\
Data File : VX047964.D
Acq On : 02 Oct 2025 13:48
Operator : JC/MD
Sample : Q3246-07
Misc : 5.0mL/MSVOA_X/WATER
ALS Vial : 13 Sample Multiplier: 1

Instrument :
MSVOA_X
ClientSampleId :
BP-VPB-184-GW-540-542

Quant Method : Z:\voasrv\HPCHEM1\MSVOA_X\Method\82X091625W.M
Quant Title : SW846 8260

TIC Library : C:\Database\NIST20.L
TIC Integration Parameters: LSCINT.P

No Library Search Compounds Detected

Data Path : Z:\voasrv\HPCHEM1\MSVOA_X\Data\VX100225\
Data File : VX047964.D
Acq On : 02 Oct 2025 13:48
Operator : JC/MD
Sample : Q3246-07
Misc : 5.0mL/MSVOA_X/WATER
ALS Vial : 13 Sample Multiplier: 1

Instrument :
MSVOA_X
ClientSampleId :
BP-VPB-184-GW-540-542

Quant Method : Z:\voasrv\HPCHEM1\MSVOA_X\Method\82X091625W.M
Quant Title : SW846 8260

TIC Library : C:\Database\NIST20.L
TIC Integration Parameters: LSCINT.P

TIC Top Hit name	RT	EstConc	Units	Response	--Internal Standard--			
					#	RT	Resp	Conc
