

Data Path : Z:\voasrv\HPCHEM1\MSVOA_X\Data\VX100225\
 Data File : VX047965.D
 Acq On : 02 Oct 2025 14:08
 Operator : JC/MD
 Sample : Q3194-15
 Misc : 5.0mL/MSVOA_X/WATER
 ALS Vial : 14 Sample Multiplier: 1

Instrument :
 MSVOA_X
 ClientSampleId :
 EB05-20250924

Integration Parameters: RTEINT.P
 Integrator: RTE
 Smoothing : ON Filtering: 5
 Sampling : 1 Min Area: 3 % of largest Peak
 Start Thrs: 0.2 Max Peaks: 100
 Stop Thrs : 0 Peak Location: TOP

If leading or trailing edge < 100 prefer < Baseline drop else tangent >
 Peak separation: 5

Method : Z:\voasrv\HPCHEM1\MSVOA_X\Method\82X091625W.M
 Title : SW846 8260

Signal : TIC: VX047965.D\data.ms

peak #	R.T. min	first scan	max scan	last scan	PK TY	peak height	corr. area	corr. % max.	% of total
1	4.556	562	569	578	rBV4	2767	8766	1.03%	0.191%
2	5.007	635	643	656	rBV4	4936	18581	2.19%	0.404%
3	5.373	692	703	720	rBV3	84679	273864	32.33%	5.953%
4	5.544	720	731	754	rVB2	119890	382465	45.15%	8.314%
5	5.946	787	797	819	rBV	97166	283941	33.52%	6.173%
6	6.751	919	929	948	rBV	227857	604236	71.34%	13.135%
7	8.634	1231	1238	1255	rBV	453937	768631	90.75%	16.709%
8	10.037	1462	1468	1486	rBV	565555	823649	97.24%	17.905%
9	11.067	1631	1637	1649	rBV	432076	588940	69.53%	12.803%
10	12.006	1785	1791	1804	rBV	653497	847013	100.00%	18.413%

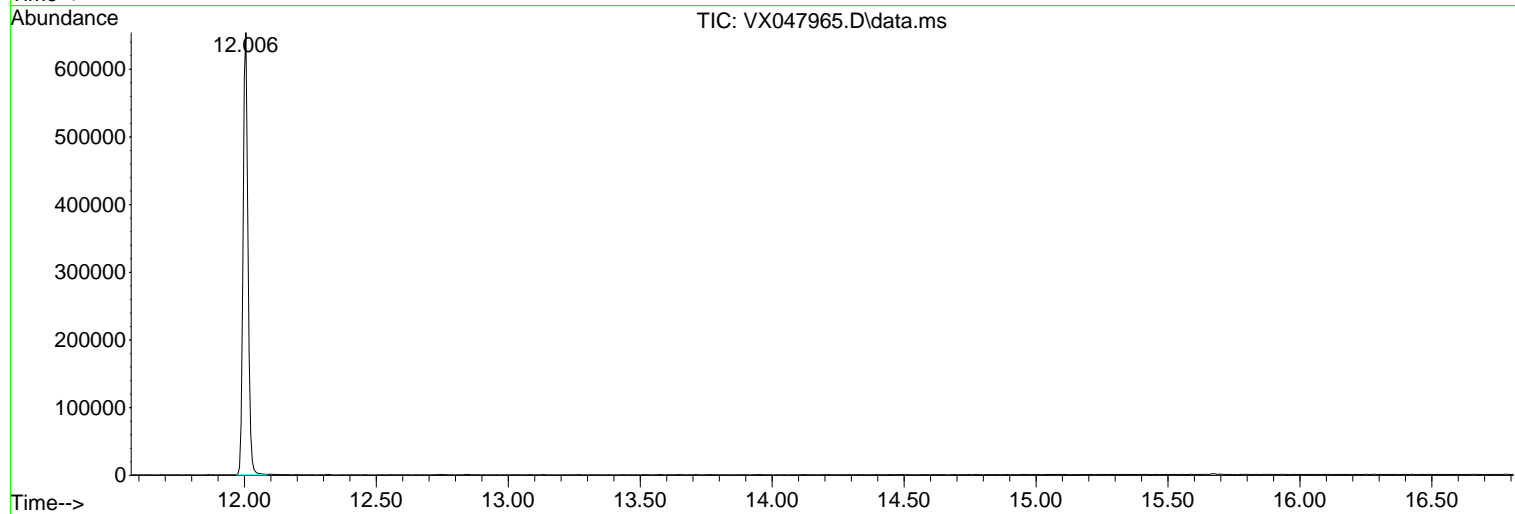
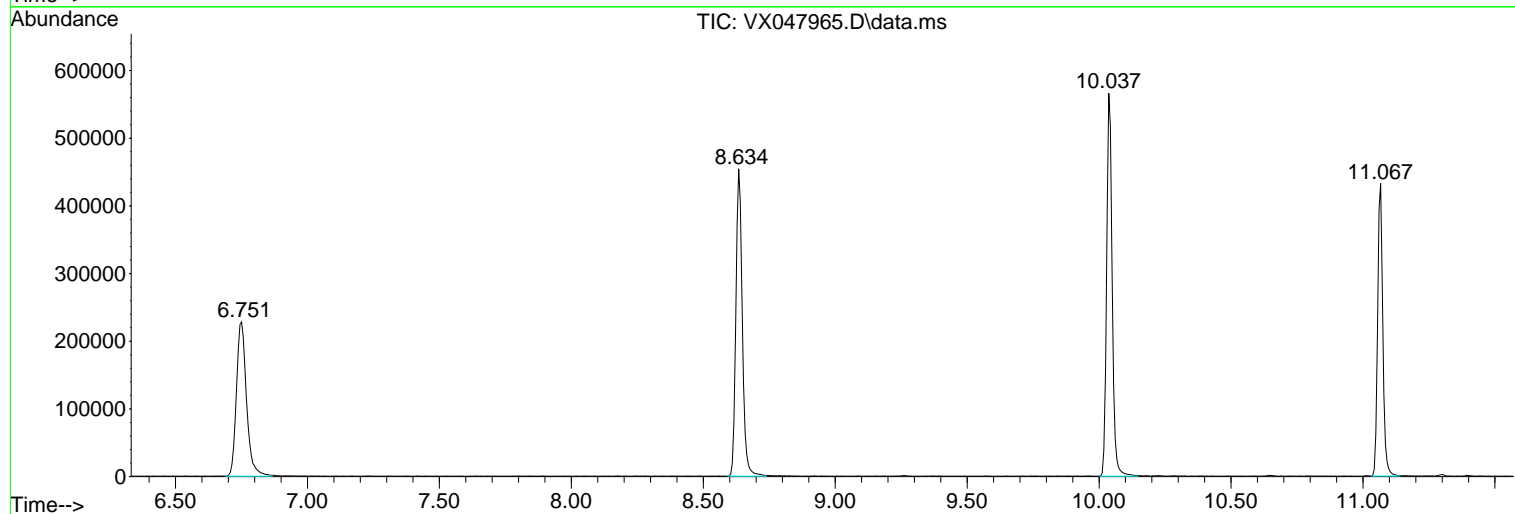
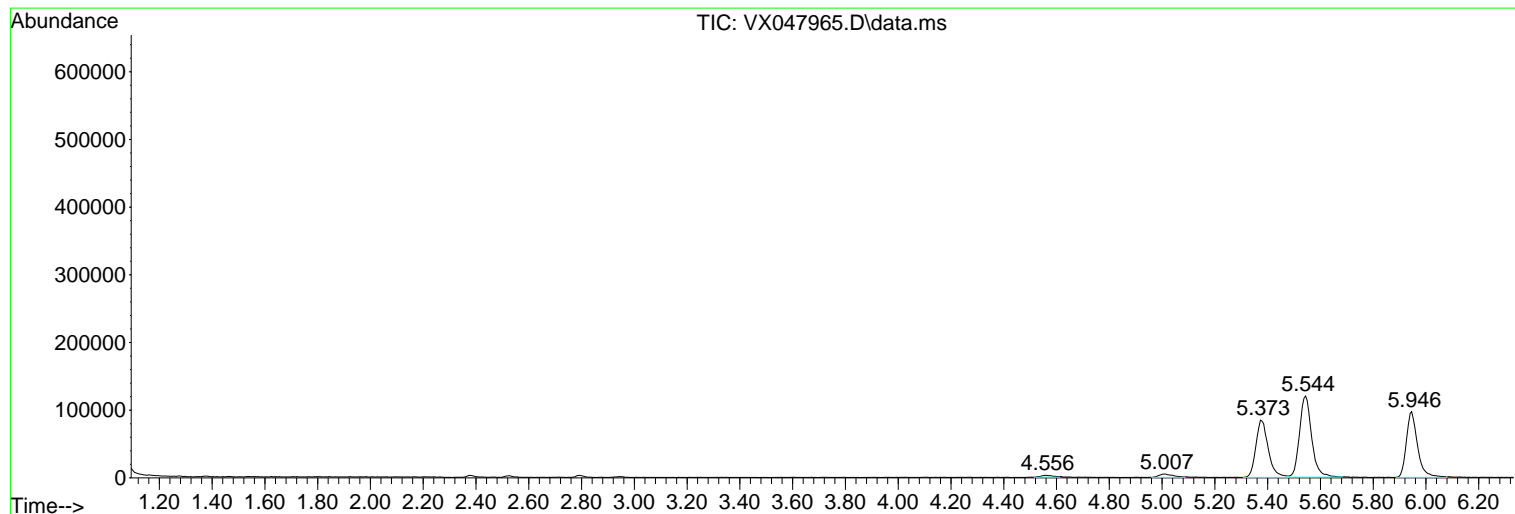
Sum of corrected areas: 4600086

Data Path : Z:\voasrv\HPCHEM1\MSVOA_X\Data\VX100225\
 Data File : VX047965.D
 Acq On : 02 Oct 2025 14:08
 Operator : JC/MD
 Sample : Q3194-15
 Misc : 5.0mL/MSVOA_X/WATER
 ALS Vial : 14 Sample Multiplier: 1

Instrument :
 MSVOA_X
 ClientSampleId :
 EB05-20250924

Quant Method : Z:\voasrv\HPCHEM1\MSVOA_X\Method\82X091625W.M
 Quant Title : SW846 8260

TIC Library : C:\Database\NIST20.L
 TIC Integration Parameters: LSCINT.P



Library Search Compound Report

Data Path : Z:\voasrv\HPCHEM1\MSVOA_X\Data\VX100225\
Data File : VX047965.D
Acq On : 02 Oct 2025 14:08
Operator : JC/MD
Sample : Q3194-15
Misc : 5.0mL/MSVOA_X/WATER
ALS Vial : 14 Sample Multiplier: 1

Instrument :
MSVOA_X
ClientSampleId :
EB05-20250924

Quant Method : Z:\voasrv\HPCHEM1\MSVOA_X\Method\82X091625W.M
Quant Title : SW846 8260

TIC Library : C:\Database\NIST20.L
TIC Integration Parameters: LSCINT.P

No Library Search Compounds Detected

Data Path : Z:\voasrv\HPCHEM1\MSVOA_X\Data\VX100225\
Data File : VX047965.D
Acq On : 02 Oct 2025 14:08
Operator : JC/MD
Sample : Q3194-15
Misc : 5.0mL/MSVOA_X/WATER
ALS Vial : 14 Sample Multiplier: 1

Instrument :
MSVOA_X
ClientSampleId :
EB05-20250924

Quant Method : Z:\voasrv\HPCHEM1\MSVOA_X\Method\82X091625W.M
Quant Title : SW846 8260

TIC Library : C:\Database\NIST20.L
TIC Integration Parameters: LSCINT.P

TIC Top Hit name	RT	EstConc	Units	Response	--Internal Standard--			
					#	RT	Resp	Conc
