

Data Path : Z:\voasrv\HPCHEM1\MSVOA_X\Data\VX100225\
 Data File : VX047968.D
 Acq On : 02 Oct 2025 15:10
 Operator : JC/MD
 Sample : Q3194-18
 Misc : 5.0mL/MSVOA_X/WATER
 ALS Vial : 17 Sample Multiplier: 1

Instrument :
 MSVOA_X
 ClientSampleId :
 TB09-20250912

Integration Parameters: RTEINT.P

Integrator: RTE
 Smoothing : ON Filtering: 5
 Sampling : 1 Min Area: 3 % of largest Peak
 Start Thrs: 0.2 Max Peaks: 100
 Stop Thrs : 0 Peak Location: TOP

If leading or trailing edge < 100 prefer < Baseline drop else tangent >
 Peak separation: 5

Method : Z:\voasrv\HPCHEM1\MSVOA_X\Method\82X091625W.M
 Title : SW846 8260

Signal : TIC: VX047968.D\data.ms

peak #	R.T. min	first scan	max scan	last scan	PK TY	peak height	corr. area	corr. % max.	% of total
1	5.379	692	704	721	rBV4	83186	272168	32.95%	6.006%
2	5.544	721	731	747	rVB	125192	383767	46.46%	8.469%
3	5.946	786	797	815	rBV	93754	269365	32.61%	5.944%
4	6.751	917	929	949	rBV	230264	615726	74.54%	13.587%
5	8.635	1231	1238	1257	rBV	477731	773022	93.59%	17.058%
6	10.037	1462	1468	1487	rBV	570768	826002	100.00%	18.228%
7	11.067	1631	1637	1652	rBV	417972	573081	69.38%	12.646%
8	12.006	1785	1791	1800	rBV	625412	818491	99.09%	18.062%

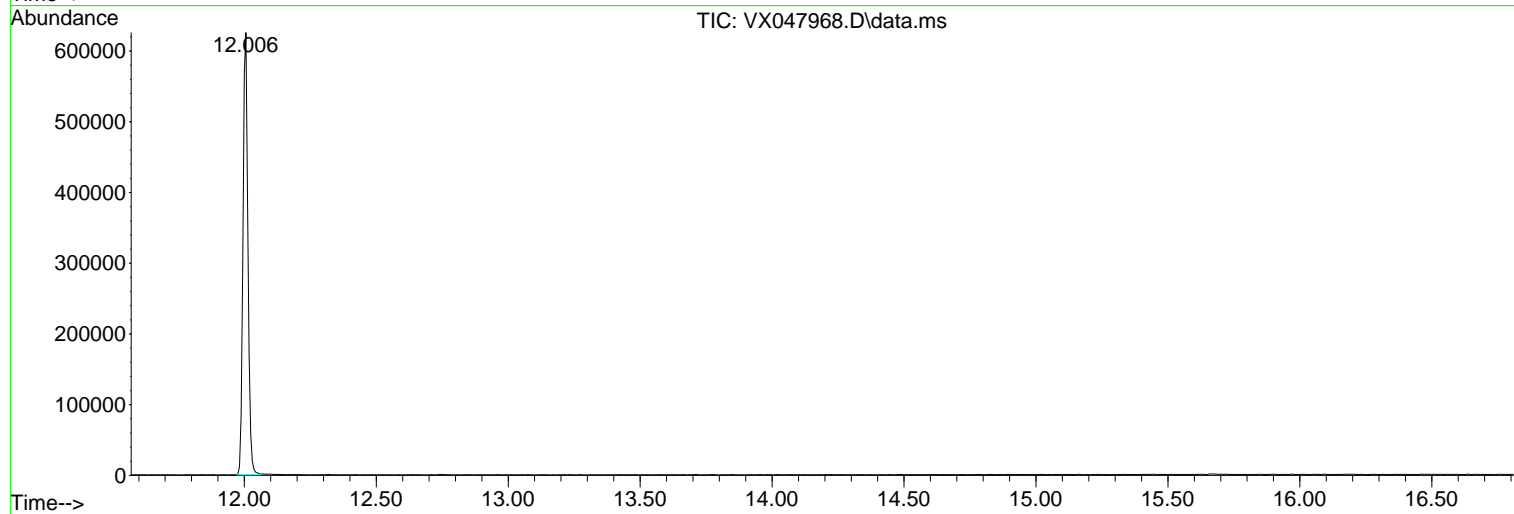
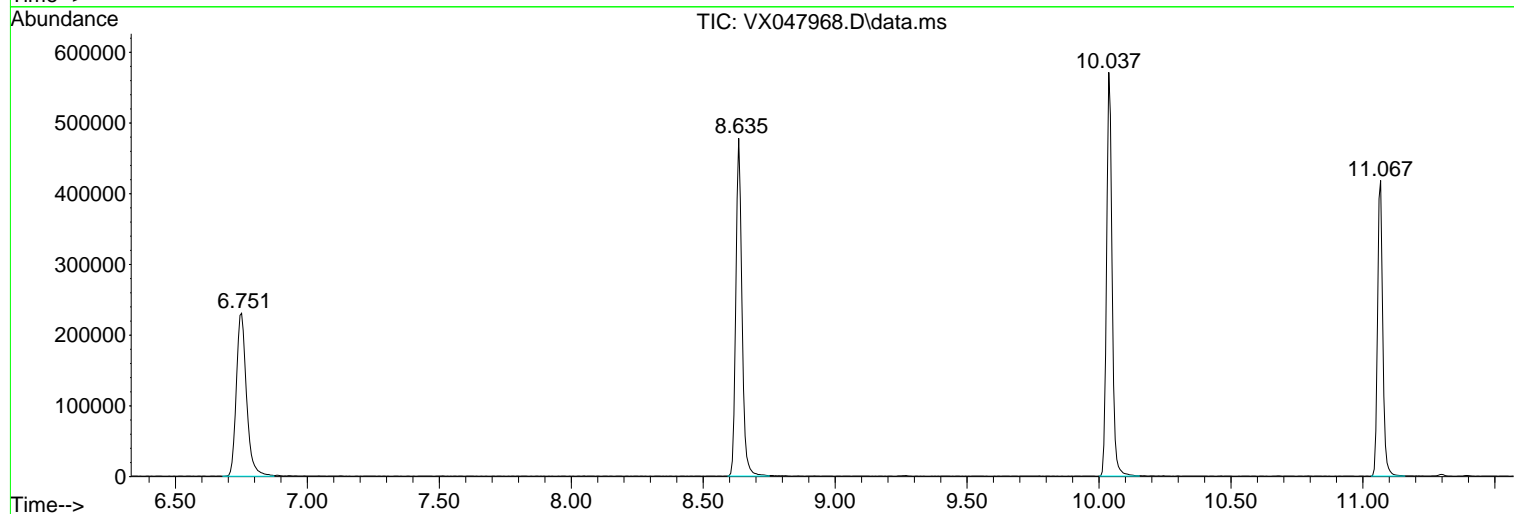
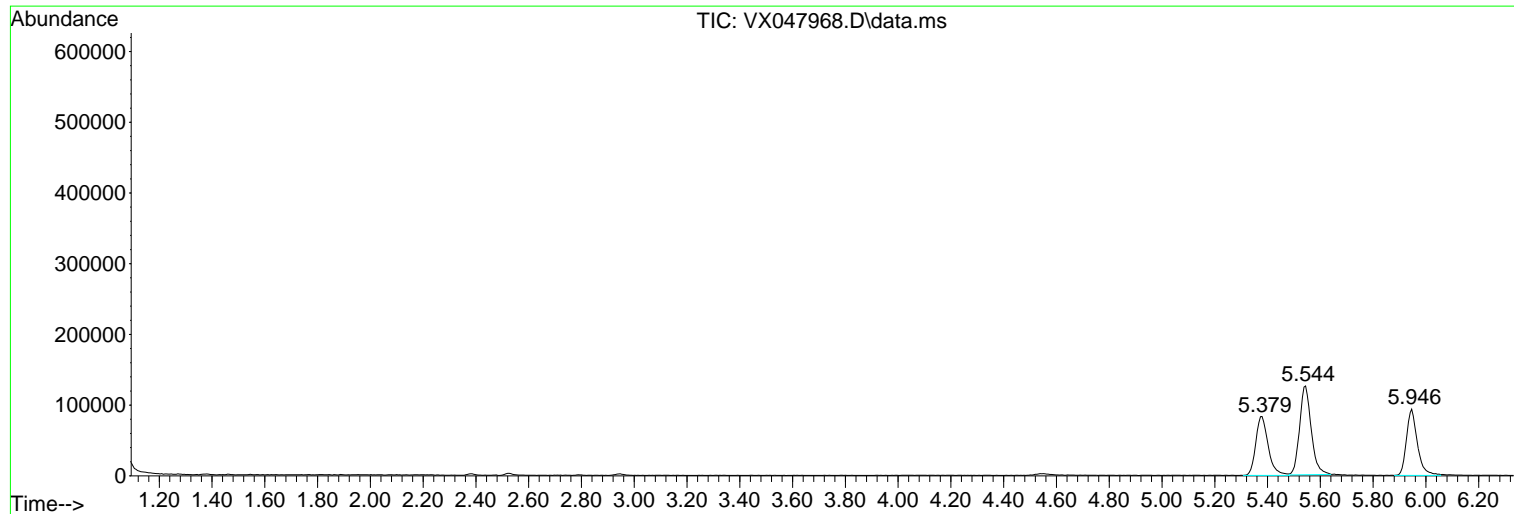
Sum of corrected areas: 4531622

Data Path : Z:\voasrv\HPCHEM1\MSVOA_X\Data\VX100225\
Data File : VX047968.D
Acq On : 02 Oct 2025 15:10
Operator : JC/MD
Sample : Q3194-18
Misc : 5.0mL/MSVOA_X/WATER
ALS Vial : 17 Sample Multiplier: 1

Instrument :
MSVOA_X
ClientSampleId :
TB09-20250912

Quant Method : Z:\voasrv\HPCHEM1\MSVOA_X\Method\82X091625W.M
Quant Title : SW846 8260

TIC Library : C:\Database\NIST20.L
TIC Integration Parameters: LSCINT.P



Library Search Compound Report

Data Path : Z:\voasrv\HPCHEM1\MSVOA_X\Data\VX100225\
Data File : VX047968.D
Acq On : 02 Oct 2025 15:10
Operator : JC/MD
Sample : Q3194-18
Misc : 5.0mL/MSVOA_X/WATER
ALS Vial : 17 Sample Multiplier: 1

Instrument :
MSVOA_X
ClientSampleId :
TB09-20250912

Quant Method : Z:\voasrv\HPCHEM1\MSVOA_X\Method\82X091625W.M
Quant Title : SW846 8260

TIC Library : C:\Database\NIST20.L
TIC Integration Parameters: LSCINT.P

No Library Search Compounds Detected

Data Path : Z:\voasrv\HPCHEM1\MSVOA_X\Data\VX100225\
Data File : VX047968.D
Acq On : 02 Oct 2025 15:10
Operator : JC/MD
Sample : Q3194-18
Misc : 5.0mL/MSVOA_X/WATER
ALS Vial : 17 Sample Multiplier: 1

Instrument :
MSVOA_X
ClientSampleId :
TB09-20250912

Quant Method : Z:\voasrv\HPCHEM1\MSVOA_X\Method\82X091625W.M
Quant Title : SW846 8260

TIC Library : C:\Database\NIST20.L
TIC Integration Parameters: LSCINT.P

TIC Top Hit name	RT	EstConc	Units	Response	--Internal Standard--			
					#	RT	Resp	Conc
