

Data Path : Z:\VOASRV\HPCHEM1\MSVOA X\DATA\VX100318\  
 Data File : VX004958.D  
 Acq On : 03 Oct 2018 10:13  
 Operator : JC/MD  
 Sample : J5084-06 10X  
 Misc : 5.91µ/5mL/100µL/5.0mL/MSVOA\_X/MEOH  
 ALS Vial : 40 Sample Multiplier: 1

Instrument :  
 MSVOA\_X  
 Client Sampled :  
 B-10(7-7.5)

Integration Parameters: RTEINT.P

Integrator: RTE  
 Smoothing : ON  
 Sampling : 1  
 Start Thrs: 0.2  
 Stop Thrs : 0

Filtering: 5  
 Min Area: 3 % of largest Peak  
 Max Peaks: 100  
 Peak Location: TOP

If leading or trailing edge < 100 prefer < Baseline drop else tangent >  
 Peak separation: 5

Method : Z:\VOASRV\HPCHEM1\MSVOA\_X\METHOD\82X092618W.M  
 Title : SW846 8260

Signal : TIC

peak #	R.T. min	first scan	max scan	last scan	PK TY	peak height	corr. area	corr. % max.	% of total
1	1.666	64	84	93	rBV10	24159	124715	8.21%	1.273%
2	3.019	298	306	314	rVB	14620	36713	2.42%	0.375%
3	5.501	700	713	726	rBV	190826	541133	35.64%	5.522%
4	5.665	727	740	767	rVB	240641	717382	47.24%	7.320%
5	6.068	795	806	826	rVB	204454	541758	35.68%	5.528%
6	6.348	843	852	861	rVB2	9253	28769	1.89%	0.294%
7	6.860	926	936	947	rBV	375913	923457	60.82%	9.423%
8	8.055	1123	1132	1139	rBV3	7039	16111	1.06%	0.164%
9	8.177	1146	1152	1161	rBV4	7682	19283	1.27%	0.197%
10	8.714	1225	1240	1248	rBV	884334	1518467	100.00%	15.494%
11	8.787	1248	1252	1276	rVB	85421	186853	12.31%	1.907%
12	10.116	1464	1470	1488	rBV	829065	1200717	79.07%	12.252%
13	10.256	1488	1493	1499	rBV	33317	48053	3.16%	0.490%
14	10.360	1502	1510	1517	rBV	138810	199080	13.11%	2.031%
15	10.701	1560	1566	1573	rBV	51462	69165	4.55%	0.706%
16	11.140	1632	1638	1649	rBV	889628	1163346	76.61%	11.870%
17	11.359	1670	1674	1681	rVB	23591	30807	2.03%	0.314%
18	11.433	1681	1686	1694	rBV	92876	175092	11.53%	1.787%
19	11.506	1694	1698	1707	rVB	42561	56170	3.70%	0.573%
20	11.670	1718	1725	1730	rBV	31235	43269	2.85%	0.442%
21	11.811	1742	1748	1755	rBV	141966	178831	11.78%	1.825%
22	12.079	1786	1792	1799	rBV	1190057	1431355	94.26%	14.605%
23	12.146	1799	1803	1807	rVB	28203	36314	2.39%	0.371%
24	12.304	1822	1829	1830	rBV	29260	39309	2.59%	0.401%
25	12.323	1830	1832	1836	rVV	31227	36066	2.38%	0.368%
26	12.371	1836	1840	1850	rVB3	39846	68437	4.51%	0.698%
27	12.524	1861	1865	1871	rVB3	11455	18233	1.20%	0.186%
28	12.585	1871	1875	1877	rBV	18521	23265	1.53%	0.237%
29	12.609	1877	1879	1885	rVB	16417	18678	1.23%	0.191%
30	12.670	1885	1889	1893	rBV	30503	37392	2.46%	0.382%
31	12.762	1899	1904	1914	rBV7	8142	23122	1.52%	0.236%
32	12.975	1932	1939	1943	rBV	15855	26638	1.75%	0.272%
33	13.018	1943	1946	1951	rVB	19850	26808	1.77%	0.274%
34	13.225	1973	1980	1984	rVB3	14069	23303	1.53%	0.238%

Data Path : Z:\VOASRV\HPCHEM1\MSVOA X\DATA\WX100318\  
Data File : VX004958.D  
Acq On : 03 Oct 2018 10:13  
Operator : JC/MD  
Sample : J5084-06 10X  
Misc : 5.91g/5mL/100uL/5.0mL/MSVOA\_X/MEOH  
ALS Vial : 40 Sample Multiplier: 1

Instrument :  
MSVOA\_X  
ClientSampleId :  
B-10(7-7.5)

Integration Parameters: RTEINT.P  
Integrator: RTE  
Smoothing : ON Filtering: 5  
Sampling : 1 Min Area: 3 % of largest Peak  
Start Thrs: 0.2 Max Peaks: 100  
Stop Thrs : 0 Peak Location: TOP

If leading or trailing edge < 100 prefer < Baseline drop else tangent >  
Peak separation: 5

Method : Z:\VOASRV\HPCHEM1\MSVOA\_X\METHOD\82X092618W.M  
Title : SW846 8260

35	13.353	1997	2001	2005	rVB3	19186	25860	1.70%	0.264%
36	13.835	2075	2080	2086	rVB	32132	43622	2.87%	0.445%
37	14.700	2213	2222	2232	rVB	48936	71592	4.71%	0.731%
38	14.840	2241	2245	2252	rVB	23729	31223	2.06%	0.319%

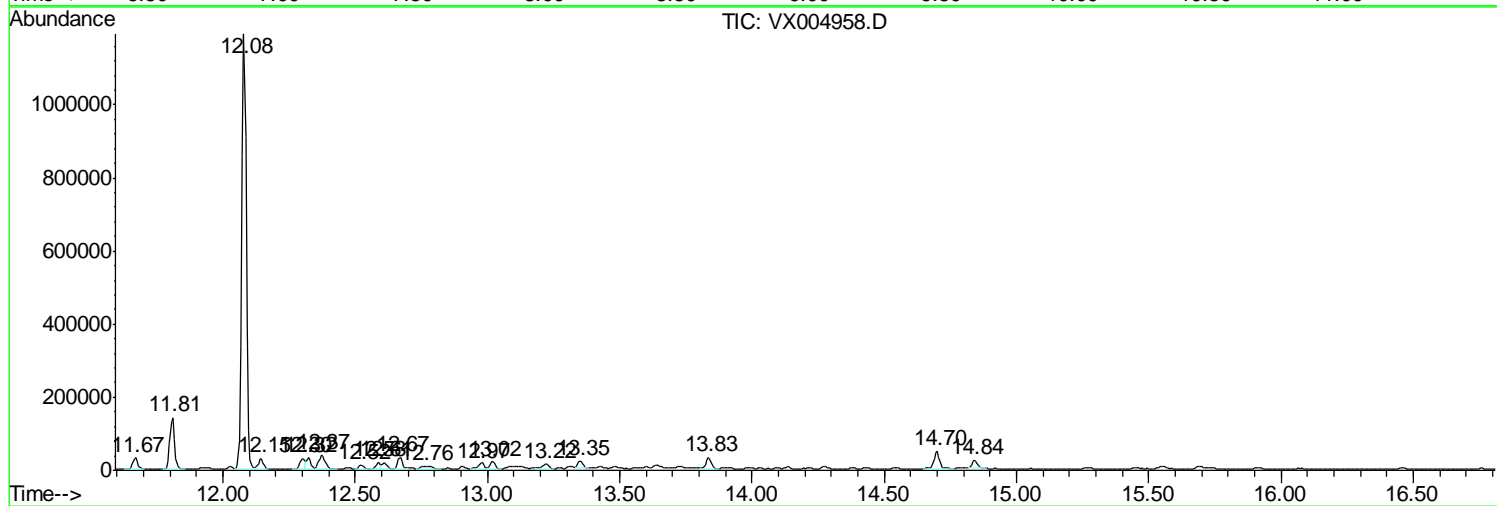
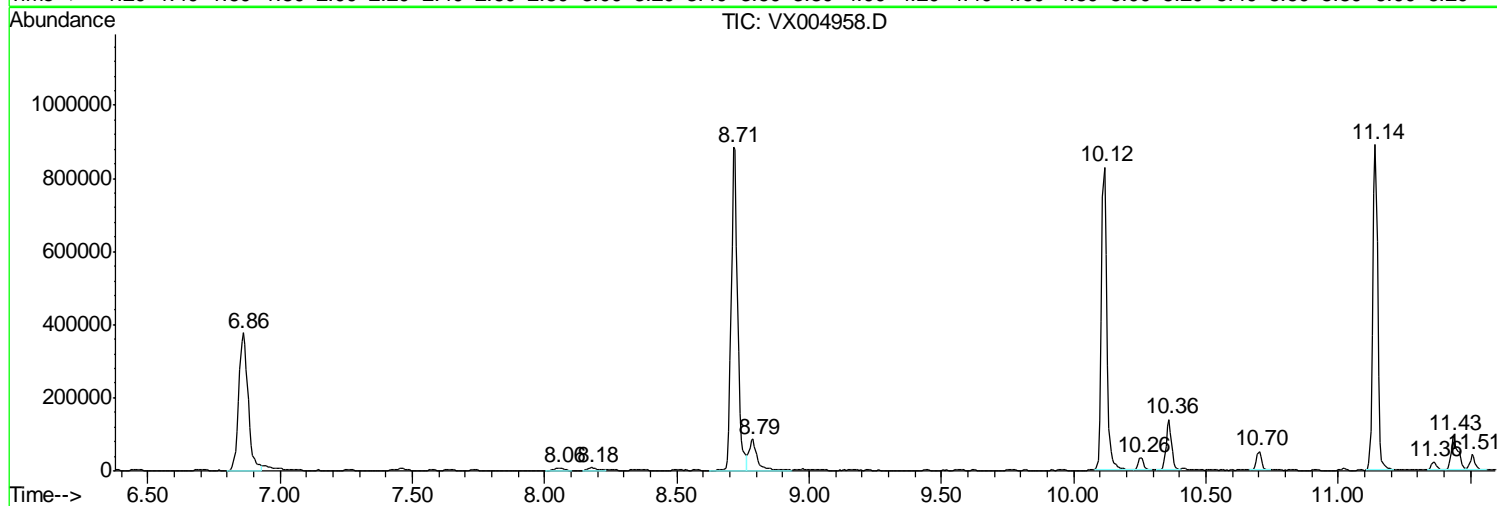
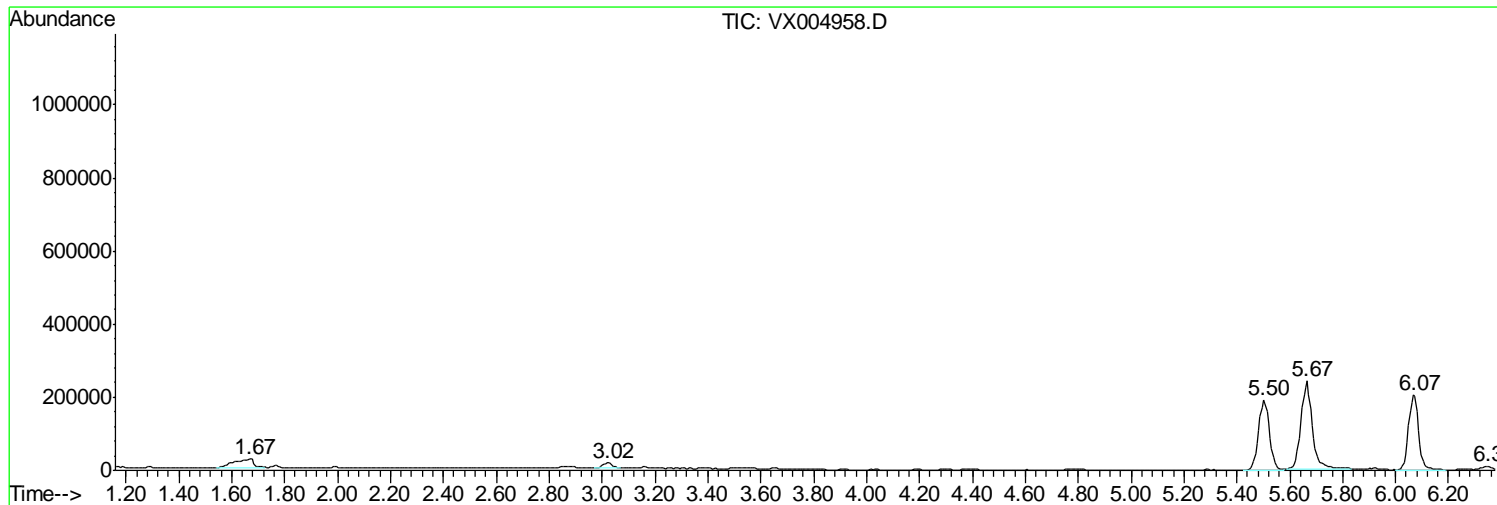
Sum of corrected areas: 9800388

Data Path : Z:\VOASRV\HPCHEM1\MSVOA X\DATA\VX100318\  
 Data File : VX004958.D  
 Acq On : 03 Oct 2018 10:13  
 Operator : JC/MD  
 Sample : J5084-06 10X  
 Misc : 5.91µ/5mL/100uL/5.0mL/MSVOA\_X/MEOH  
 ALS Vial : 40 Sample Multiplier: 1

Instrument :  
 MSVOA\_X  
 ClientSampled :  
 B-10(7-7.5)

Quant Method : Z:\VOASRV\HPCHEM1\MSVOA\_X\METHOD\82X092618W.M  
 Quant Title : SW846 8260

TIC Library : C:\DATABASE\NIST11.L  
 TIC Integration Parameters: LSCINT.P



Data Path : Z:\VOASRV\HPCHEM1\MSVOA X\DATA\VX100318\  
 Data File : VX004958.D  
 Acq On : 03 Oct 2018 10:13  
 Operator : JC/MD  
 Sample : J5084-06 10X  
 Misc : 5.91µ/5mL/100uL/5.0mL/MSVOA\_X/MEOH  
 ALS Vial : 40 Sample Multiplier: 1

Instrument :  
 MSVOA\_X  
 ClientSampleID :  
 B-10(7-7.5)

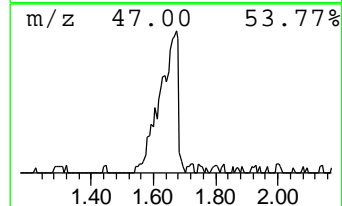
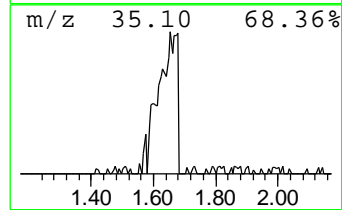
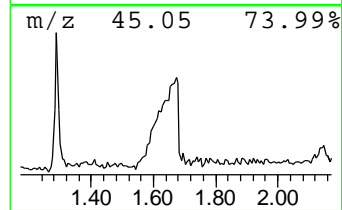
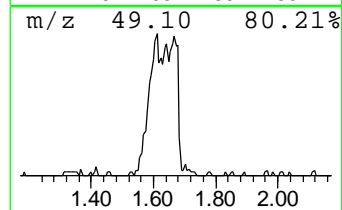
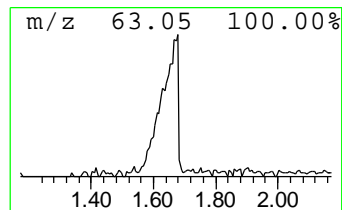
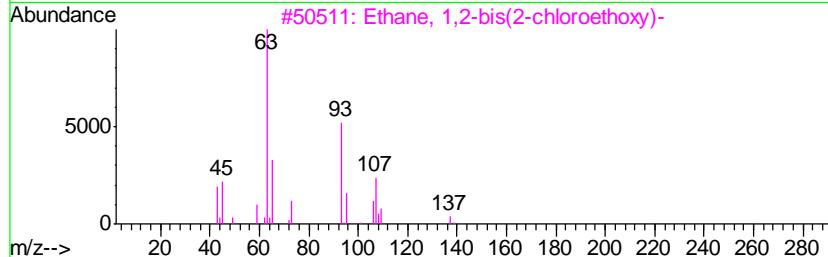
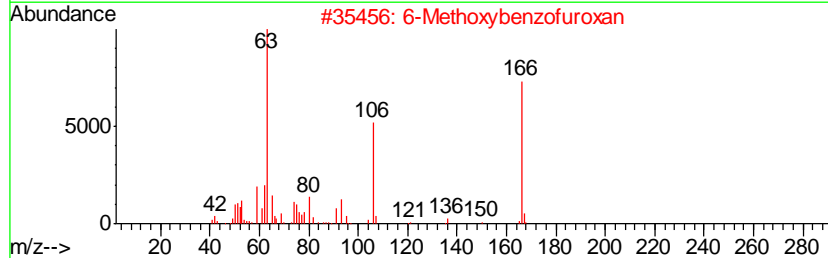
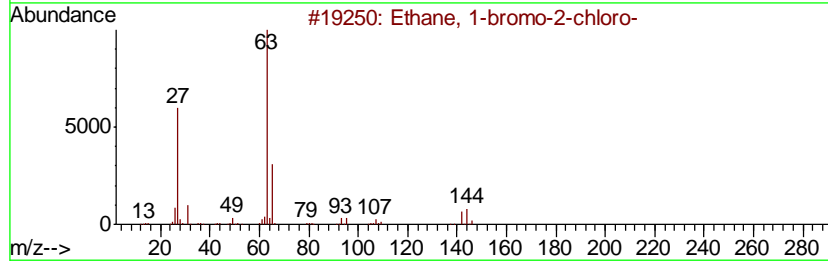
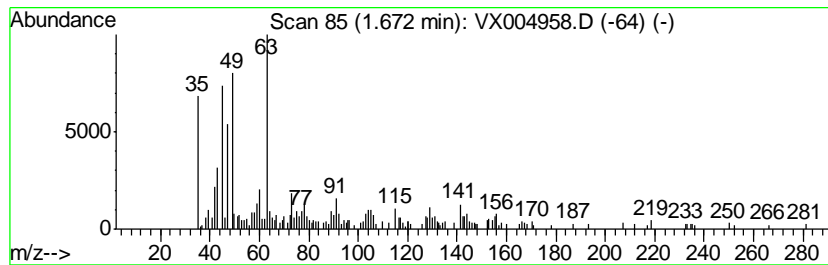
Quant Method : Z:\VOASRV\HPCHEM1\MSVOA\_X\METHOD\82X092618W.M  
 Quant Title : SW846 8260

TIC Library : C:\DATABASE\NIST11.L  
 TIC Integration Parameters: LSCINT.P

\*\*\*\*\*  
 Peak Number 1 unknown1.67 Concentration Rank 1

R.T.	EstConc	Area	Relative to ISTD	R.T.
1.67	8.69 ug/l	124715	Pentafluorobenzene	5.67

Hit#	of	Tentative ID	MW	MolForm	CAS#	Qual
1	5	Ethane, 1-bromo-2-chloro-	142	C2H4BrCl	000107-04-0	22
2		6-Methoxybenzofuroxan	166	C7H6N2O3	003524-06-9	16
3		Ethane, 1,2-bis(2-chloroethoxy)-	186	C6H12Cl2O2	000112-26-5	13
4		2-Anilino-4-(methylamino)-6-(pip...	363	C18H17N7O2	1000225-97-3	12
5		Bis(2-(2-chloroethoxy)ethyl)ether	230	C8H16Cl2O3	000638-56-2	12



Data Path : Z:\VOASRV\HPCHEM1\MSVOA X\DATA\VX100318\  
 Data File : VX004958.D  
 Acq On : 03 Oct 2018 10:13  
 Operator : JC/MD  
 Sample : J5084-06 10X  
 Misc : 5.91µ/5mL/100uL/5.0mL/MSVOA\_X/MEOH  
 ALS Vial : 40 Sample Multiplier: 1

Instrument :  
 MSVOA\_X  
 ClientSampled :  
 B-10(7-7.5)

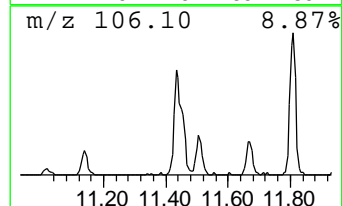
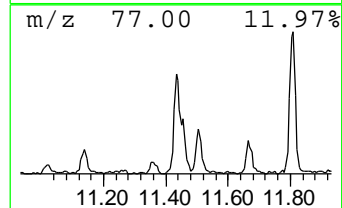
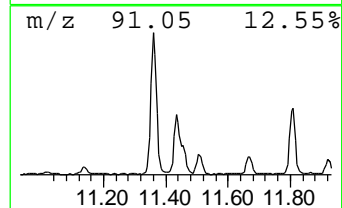
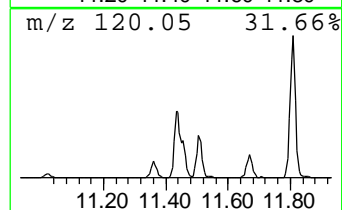
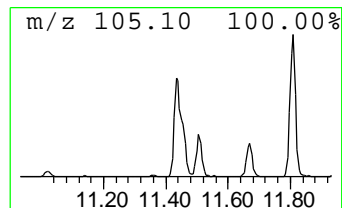
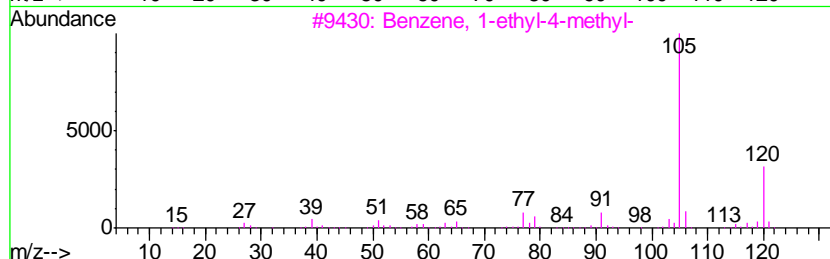
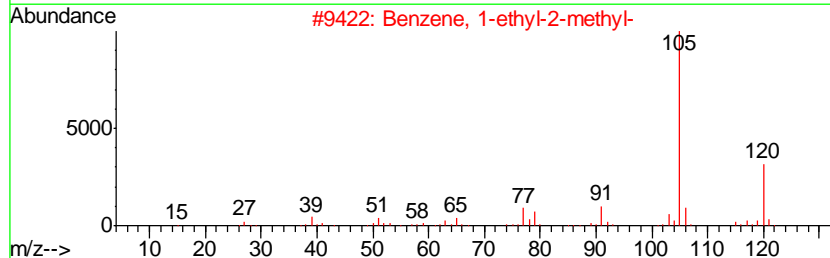
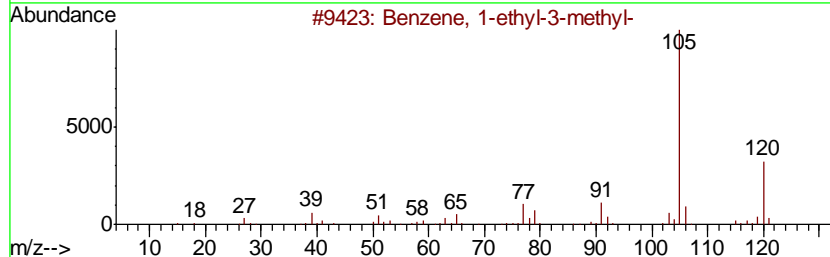
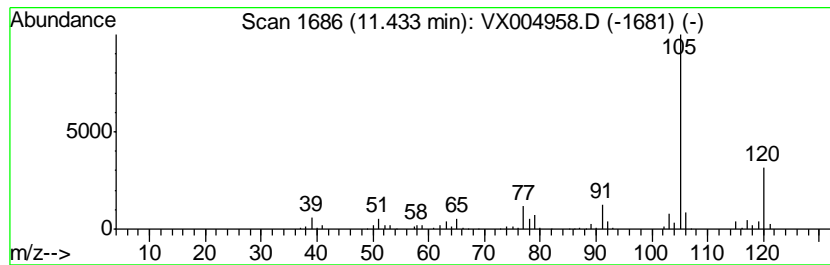
Quant Method : Z:\VOASRV\HPCHEM1\MSVOA\_X\METHOD\82X092618W.M  
 Quant Title : SW846 8260

TIC Library : C:\DATABASE\NIST11.L  
 TIC Integration Parameters: LSCINT.P

\*\*\*\*\*  
 Peak Number 2 Benzene, 1-ethyl-3-methyl- Concentration Rank 2

R.T.	EstConc	Area	Relative to ISTD	R.T.
11.43	6.12 ug/l	175092	1,4-Dichlorobenzene-d4	12.08

Hit#	of	Tentative ID	MW	MolForm	CAS#	Qual
1	5	Benzene, 1-ethyl-3-methyl-	120	C9H12	000620-14-4	95
2		Benzene, 1-ethyl-2-methyl-	120	C9H12	000611-14-3	94
3		Benzene, 1-ethyl-4-methyl-	120	C9H12	000622-96-8	91
4		Mesitylene	120	C9H12	000108-67-8	90
5		Benzene, 1,2,4-trimethyl-	120	C9H12	000095-63-6	90



Data Path : Z:\VOASRV\HPCHEM1\MSVOA\_X\DATA\VX100318\  
Data File : VX004958.D  
Acq On : 03 Oct 2018 10:13  
Operator : JC/MD  
Sample : J5084-06 10X  
Misc : 5.91g/5mL/100uL/5.0mL/MSVOA\_X/MEOH  
ALS Vial : 40 Sample Multiplier: 1

Instrument :  
MSVOA\_X  
ClientSampleId :  
B-10(7-7.5)

Quant Method : Z:\VOASRV\HPCHEM1\MSVOA\_X\METHOD\82X092618W.M  
Quant Title : SW846 8260

TIC Library : C:\DATABASE\NIST11.L  
TIC Integration Parameters: LSCINT.P

TIC Top Hit name	RT	EstConc	Units	Response	--Internal Standard--			
					#	RT	Resp	Conc
unknown1.67	1.67	8.7	ug/l	124715	1	5.67	717382	50.0
Benzene, 1-ethyl-...	11.43	6.1	ug/l	175092	4	12.08	1431360	50.0