

Data Path : Z:\voasrv\HPCHEM1\MSVOA_X\Data\VX100324\
 Data File : VX043251.D
 Acq On : 03 Oct 2024 10:57
 Operator : JC/MD
 Sample : P4231-03
 Misc : 5.0mL/MSVOA_X/WATER
 ALS Vial : 9 Sample Multiplier: 1

Instrument :
 MSVOA_X
 ClientSampleId :

Quant Time: Oct 04 01:28:31 2024
 Quant Method : Z:\voasrv\HPCHEM1\MSVOA_X\Method\82X100124W.M
 Quant Title : SW846 8260
 QLast Update : Wed Oct 02 16:50:57 2024
 Response via : Initial Calibration

Compound	R.T.	QIon	Response	Conc	Units	Dev(Min)

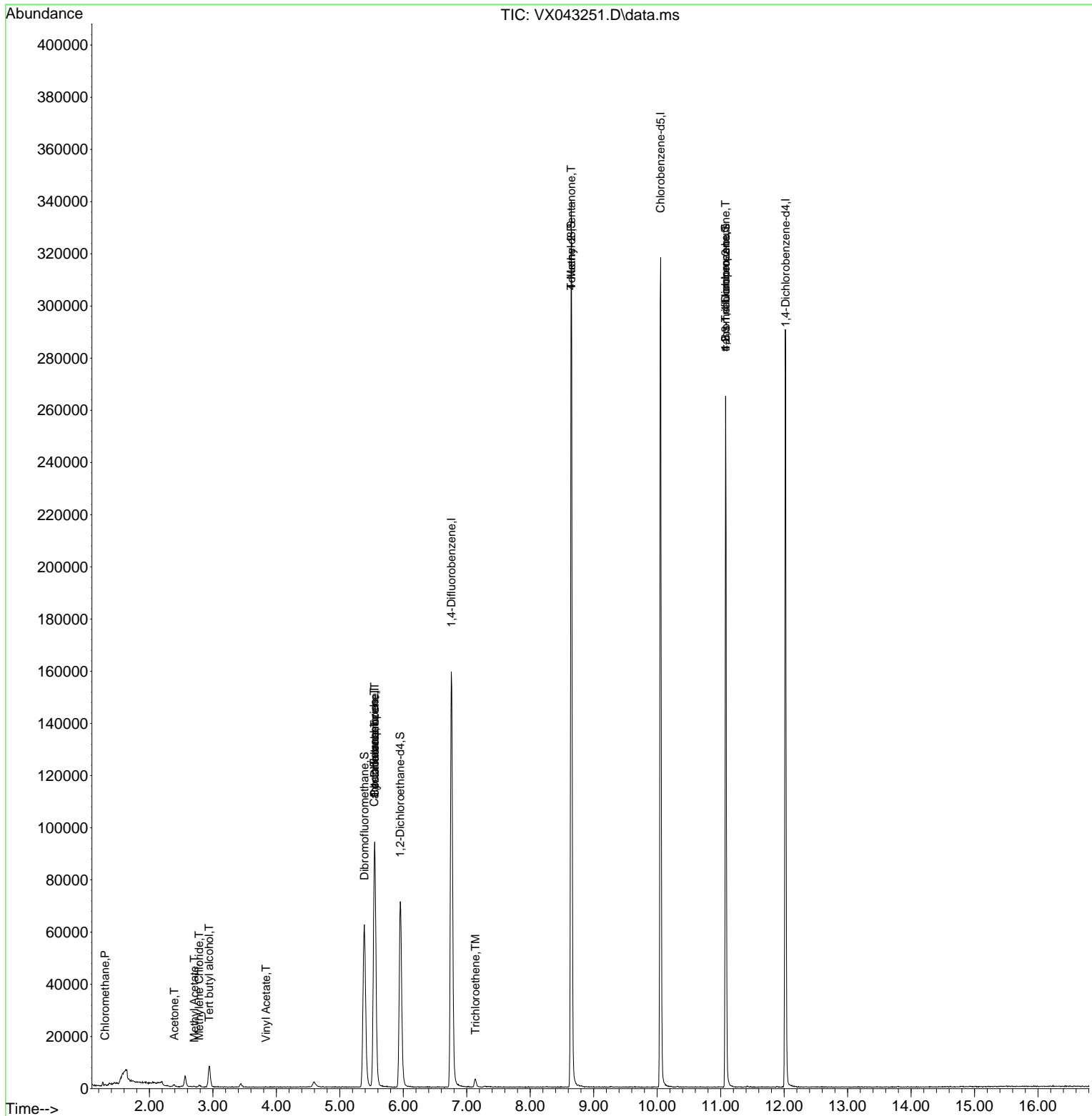
Internal Standards						
1) Pentafluorobenzene	5.550	168	84263	50.000	ug/l	0.00
34) 1,4-Difluorobenzene	6.757	114	164836	50.000	ug/l	0.00
63) Chlorobenzene-d5	10.055	117	141753	50.000	ug/l	0.00
72) 1,4-Dichlorobenzene-d4	12.024	152	59774	50.000	ug/l	0.00
System Monitoring Compounds						
33) 1,2-Dichloroethane-d4	5.952	65	73528	53.430	ug/l	0.00
Spiked Amount	50.000	Range 74 - 125	Recovery	=	106.860%	
35) Dibromofluoromethane	5.385	113	54723	48.139	ug/l	0.00
Spiked Amount	50.000	Range 75 - 124	Recovery	=	96.280%	
50) Toluene-d8	8.647	98	195658	49.666	ug/l	0.00
Spiked Amount	50.000	Range 86 - 113	Recovery	=	99.340%	
62) 4-Bromofluorobenzene	11.079	95	68704	48.005	ug/l	0.00
Spiked Amount	50.000	Range 77 - 121	Recovery	=	96.020%	
Target Compounds						
						Qvalue
3) Chloromethane	1.300	50	306	0.303	ug/l	92
11) Tert butyl alcohol	2.940	59	4763	18.188	ug/l #	74
16) Acetone	2.392	43	953	1.658	ug/l	97
18) Methyl Acetate	2.709	43	327	0.227	ug/l #	51
20) Methylene Chloride	2.782	84	326	0.308	ug/l #	84
23) Vinyl Acetate	3.837	43	27	6.347	ug/l #	71
31) Cyclohexane	5.550	56	2065	1.391	ug/l #	13
36) 1,1-Dichloropropene	5.550	75	7327	5.102	ug/l #	51
38) Carbon Tetrachloride	5.544	117	9590	5.641	ug/l #	14
44) Trichloroethene	7.135	130	1366	1.183	ug/l	89
51) 4-Methyl-2-Pentanone	8.647	43	1070	0.618	ug/l #	1
76) 1,2,3-Trichloropropane	11.079	75	37913	28.595	ug/l #	33
81) trans-1,4-Dichloro-2-b...	11.079	75	37913	74.109	ug/l #	8

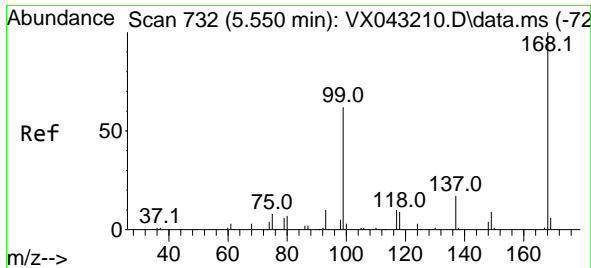
(#) = qualifier out of range (m) = manual integration (+) = signals summed

Data Path : Z:\voasrv\HPCHEM1\MSVOA_X\Data\VX100324\
 Data File : VX043251.D
 Acq On : 03 Oct 2024 10:57
 Operator : JC/MD
 Sample : P4231-03
 Misc : 5.0mL/MSVOA_X/WATER
 ALS Vial : 9 Sample Multiplier: 1

Instrument :
 MSVOA_X
 ClientSampleId :

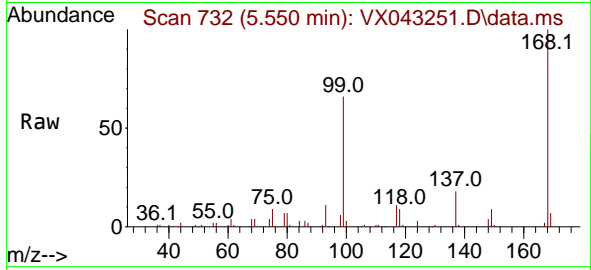
Quant Time: Oct 04 01:28:31 2024
 Quant Method : Z:\voasrv\HPCHEM1\MSVOA_X\Method\82X100124W.M
 Quant Title : SW846 8260
 QLast Update : Wed Oct 02 16:50:57 2024
 Response via : Initial Calibration



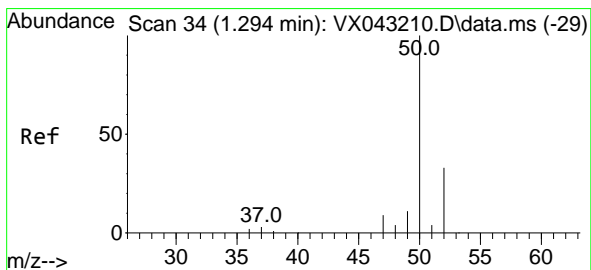
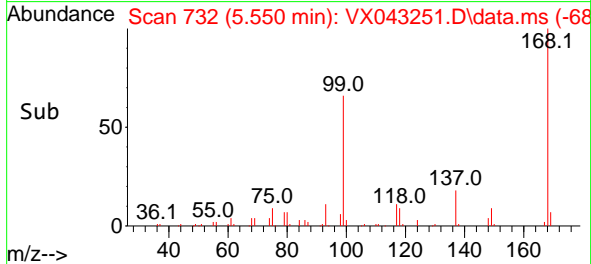
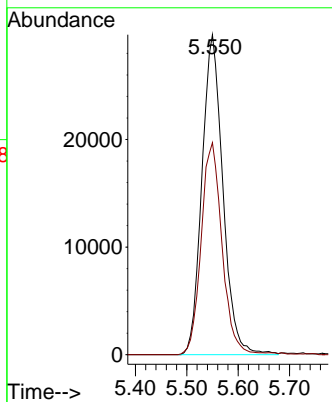


#1
 Pentafluorobenzene
 Concen: 50.000 ug/l
 RT: 5.550 min Scan# 71
 Delta R.T. -0.000 min
 Lab File: VX043251.D
 Acq: 03 Oct 2024 10:57

Instrument :
 MSVOA_X
 ClientSampleId :

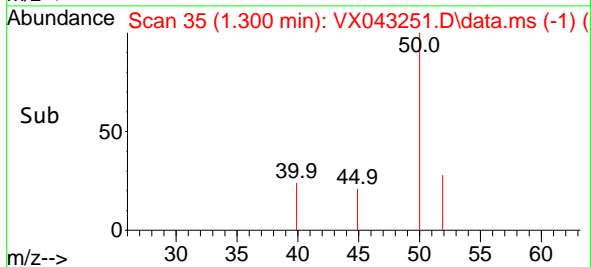
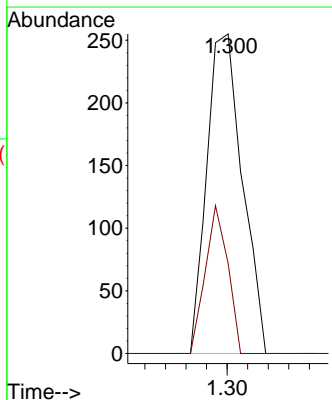
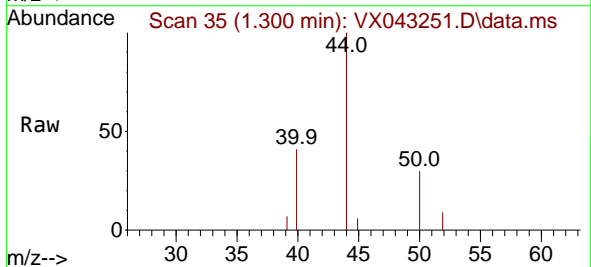


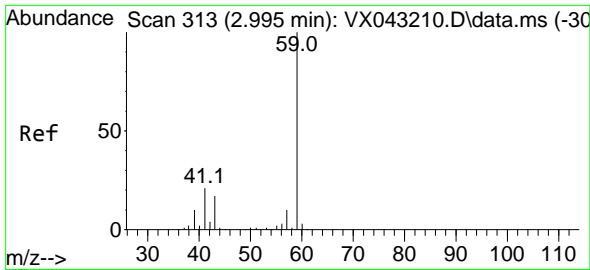
Tgt Ion:168 Resp: 84263
 Ion Ratio Lower Upper
 168 100
 99 66.3 49.7 74.5



#3
 Chloromethane
 Concen: 0.303 ug/l
 RT: 1.300 min Scan# 35
 Delta R.T. 0.006 min
 Lab File: VX043251.D
 Acq: 03 Oct 2024 10:57

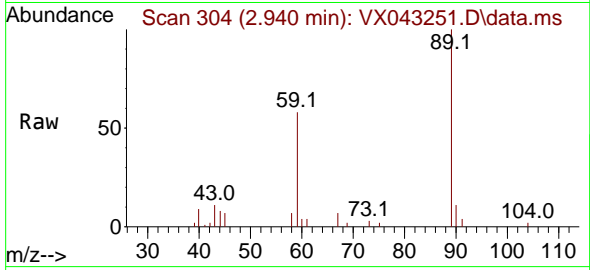
Tgt Ion: 50 Resp: 306
 Ion Ratio Lower Upper
 50 100
 52 28.2 26.1 39.1



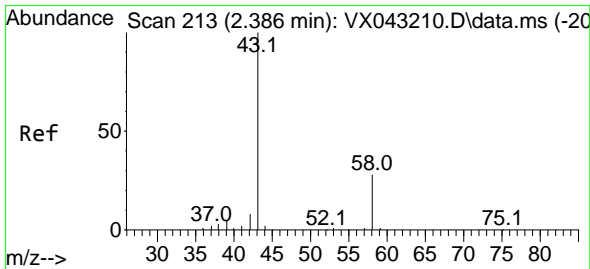
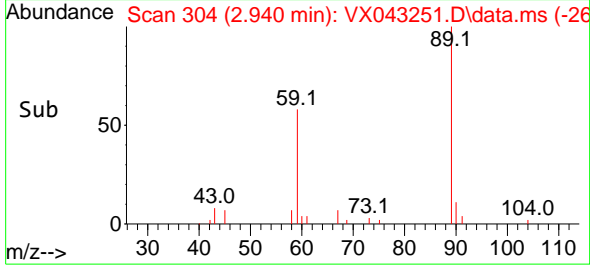
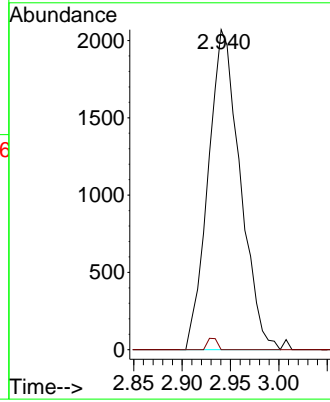


#11
 Tert butyl alcohol
 Concen: 18.188 ug/l
 RT: 2.940 min Scan# 30
 Delta R.T. -0.055 min
 Lab File: VX043251.D
 Acq: 03 Oct 2024 10:57

Instrument :
 MSVOA_X
 ClientSampleId :

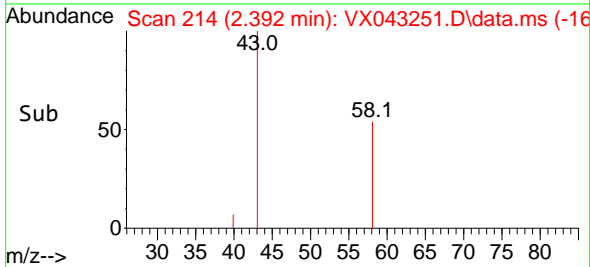
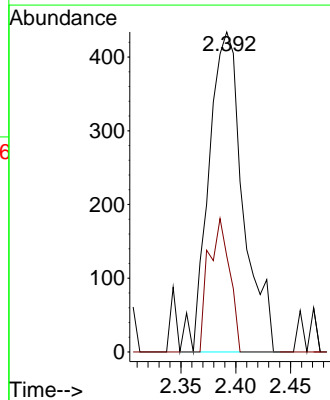
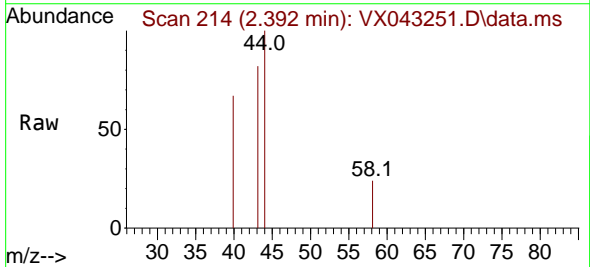


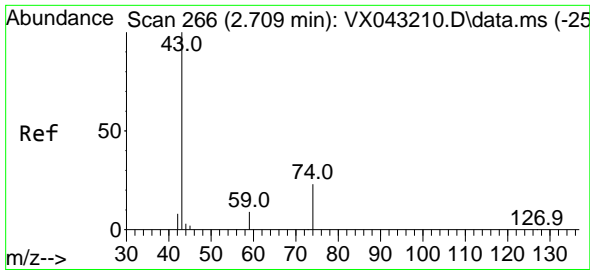
Tgt Ion: 59 Resp: 4763
 Ion Ratio Lower Upper
 59 100
 57 1.1 8.6 13.0#



#16
 Acetone
 Concen: 1.658 ug/l
 RT: 2.392 min Scan# 214
 Delta R.T. 0.006 min
 Lab File: VX043251.D
 Acq: 03 Oct 2024 10:57

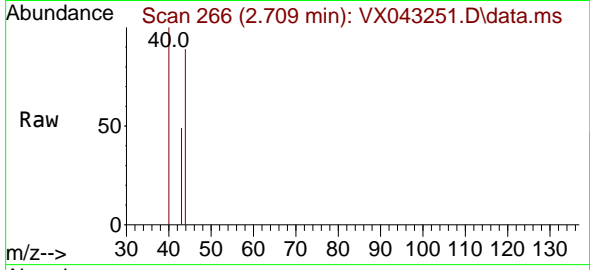
Tgt Ion: 43 Resp: 953
 Ion Ratio Lower Upper
 43 100
 58 30.0 22.6 33.8



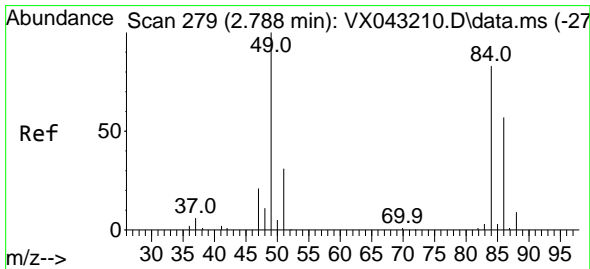
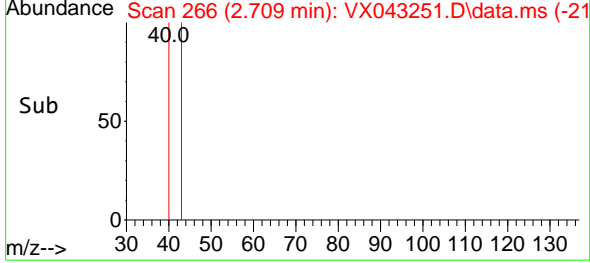
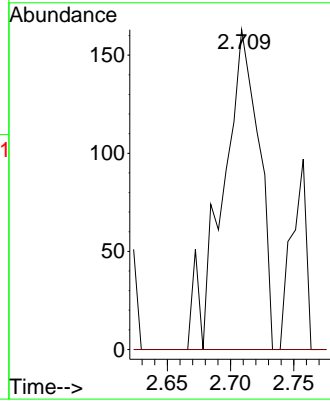


#18
 Methyl Acetate
 Concen: 0.227 ug/l
 RT: 2.709 min Scan# 20
 Delta R.T. -0.000 min
 Lab File: VX043251.D
 Acq: 03 Oct 2024 10:57

Instrument : MSVOA_X
 ClientSampleId :

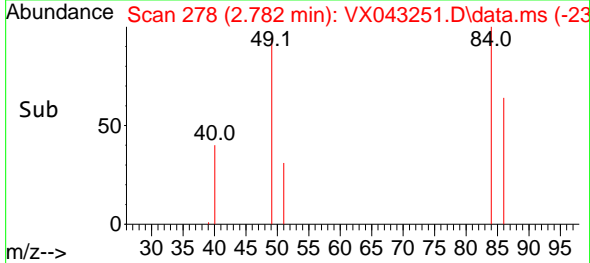
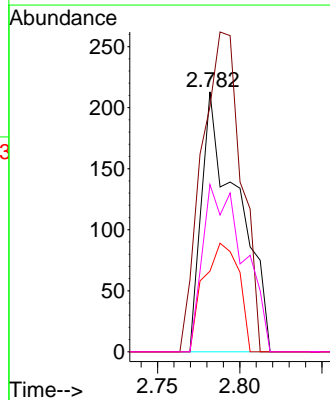
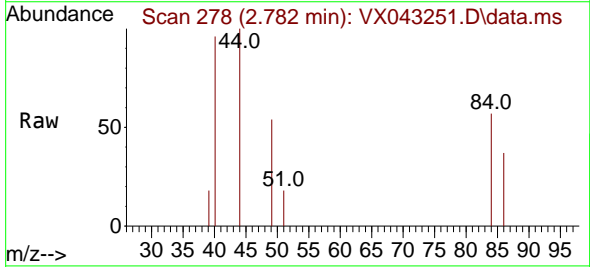


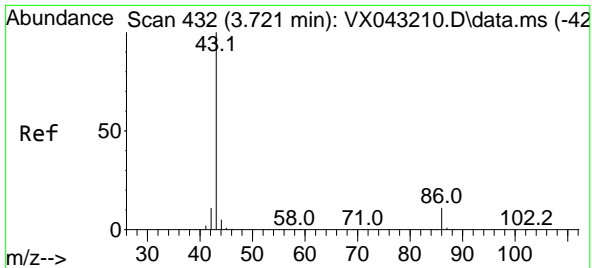
Tgt Ion: 43 Resp: 327
 Ion Ratio Lower Upper
 43 100
 74 0.0 19.1 28.7#



#20
 Methylene Chloride
 Concen: 0.308 ug/l
 RT: 2.782 min Scan# 278
 Delta R.T. -0.006 min
 Lab File: VX043251.D
 Acq: 03 Oct 2024 10:57

Tgt Ion: 84 Resp: 326
 Ion Ratio Lower Upper
 84 100
 49 94.4 96.7 145.1#
 51 31.0 30.4 45.6
 86 64.3 54.7 82.1

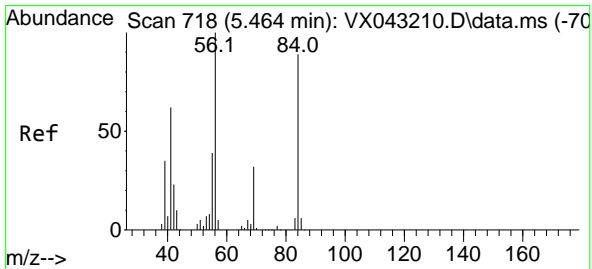
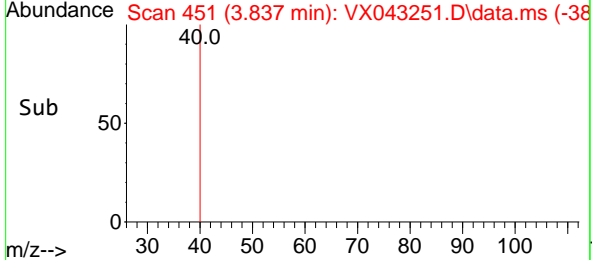
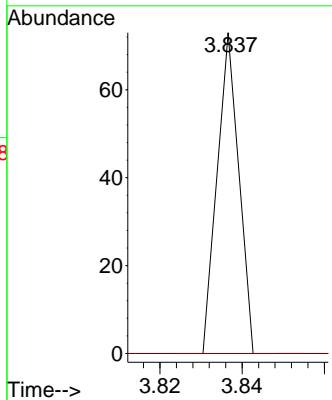
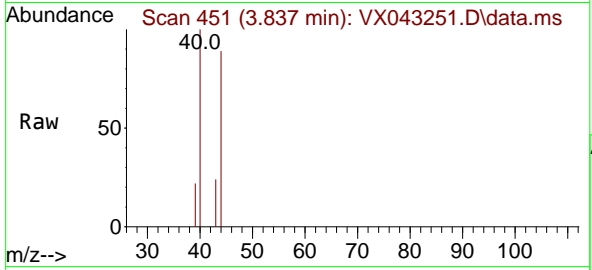




#23
 Vinyl Acetate
 Concen: 6.347 ug/l
 RT: 3.837 min Scan# 41
 Delta R.T. 0.116 min
 Lab File: VX043251.D
 Acq: 03 Oct 2024 10:57

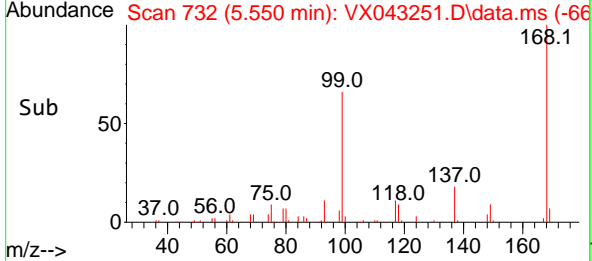
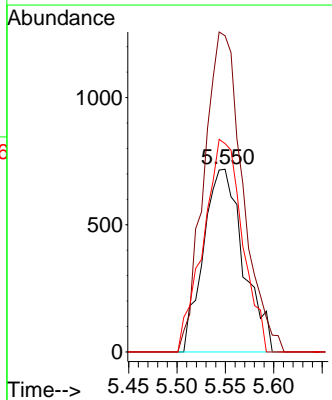
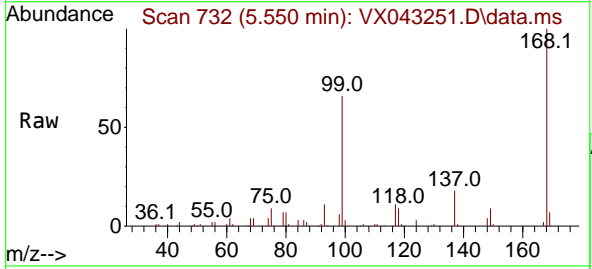
Instrument : MSVOA_X
 ClientSampleId :

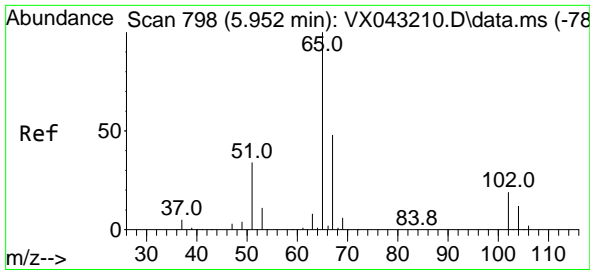
Tgt Ion: 43 Resp: 27
 Ion Ratio Lower Upper
 43 100
 86 0.0 8.8 13.2#



#31
 Cyclohexane
 Concen: 1.391 ug/l
 RT: 5.550 min Scan# 732
 Delta R.T. 0.085 min
 Lab File: VX043251.D
 Acq: 03 Oct 2024 10:57

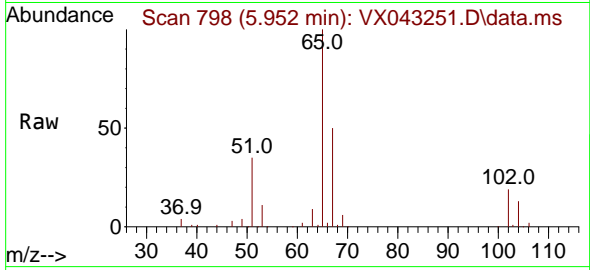
Tgt Ion: 56 Resp: 2065
 Ion Ratio Lower Upper
 56 100
 69 173.1 25.8 38.6#
 84 114.1 71.1 106.7#



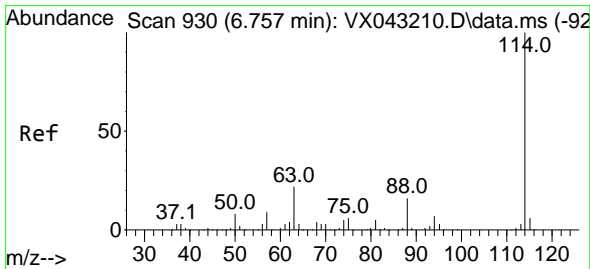
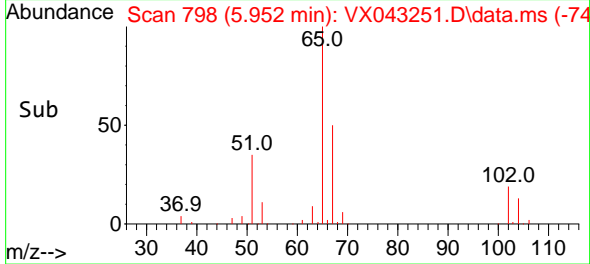
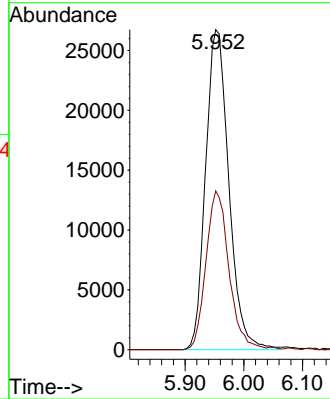


#33
 1,2-Dichloroethane-d4
 Concen: 53.430 ug/l
 RT: 5.952 min Scan# 798
 Delta R.T. -0.000 min
 Lab File: VX043251.D
 Acq: 03 Oct 2024 10:57

Instrument : MSVOA_X
 ClientSampleId :

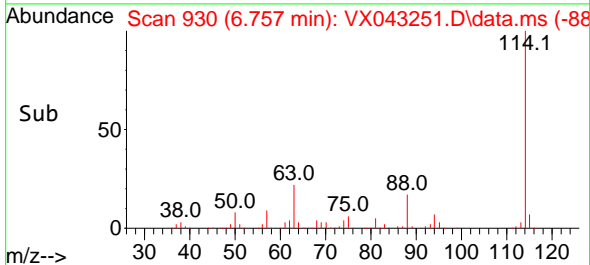
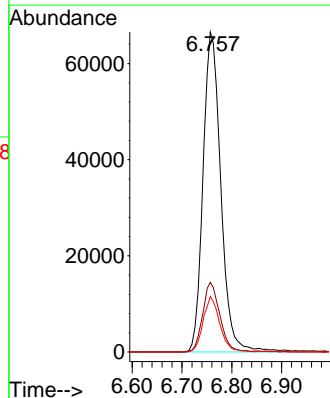
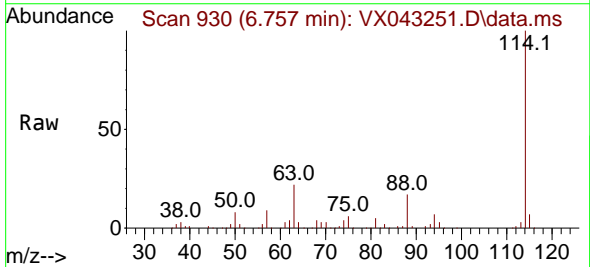


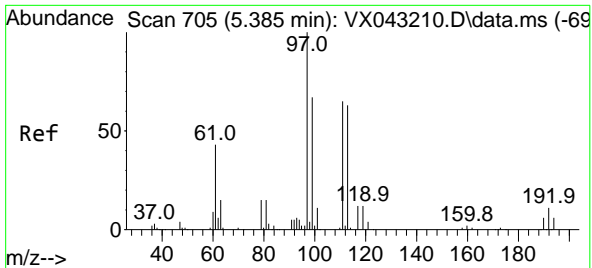
Tgt Ion: 65 Resp: 73528
 Ion Ratio Lower Upper
 65 100
 67 48.9 0.0 99.0



#34
 1,4-Difluorobenzene
 Concen: 50.000 ug/l
 RT: 6.757 min Scan# 930
 Delta R.T. -0.000 min
 Lab File: VX043251.D
 Acq: 03 Oct 2024 10:57

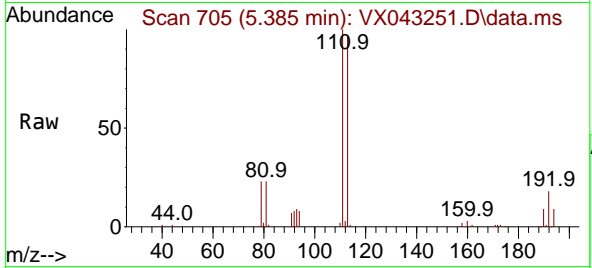
Tgt Ion: 114 Resp: 164836
 Ion Ratio Lower Upper
 114 100
 63 21.7 0.0 43.0
 88 17.3 0.0 33.0



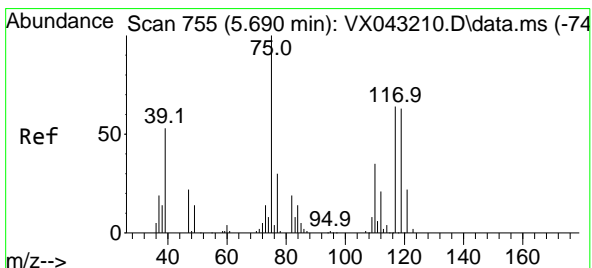
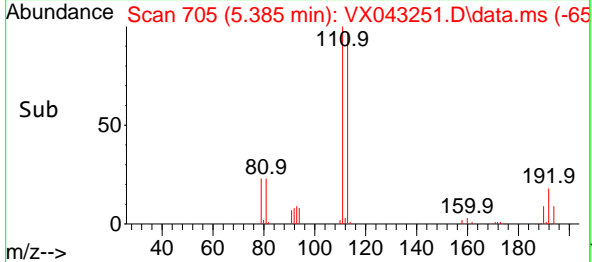
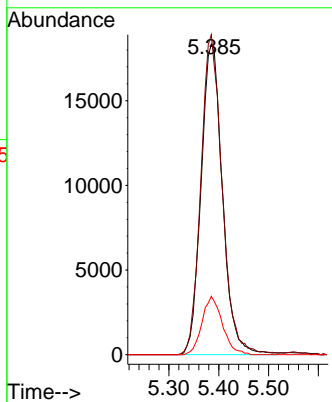


#35
 Dibromofluoromethane
 Concen: 48.139 ug/l
 RT: 5.385 min Scan# 705
 Delta R.T. -0.000 min
 Lab File: VX043251.D
 Acq: 03 Oct 2024 10:57

Instrument : MSVOA_X
 ClientSampleId :

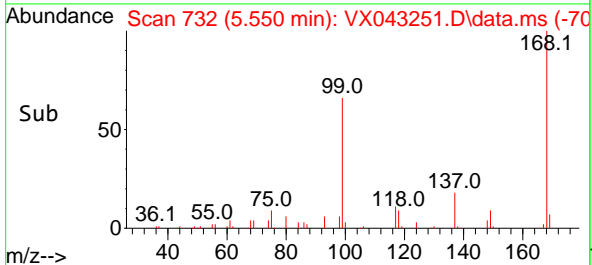
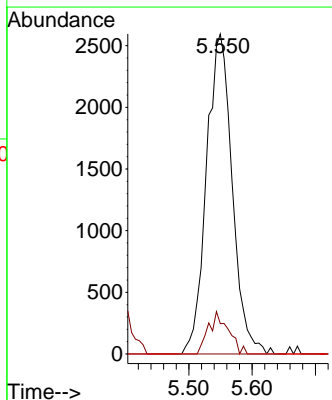
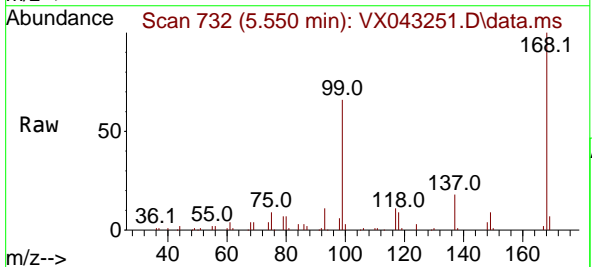


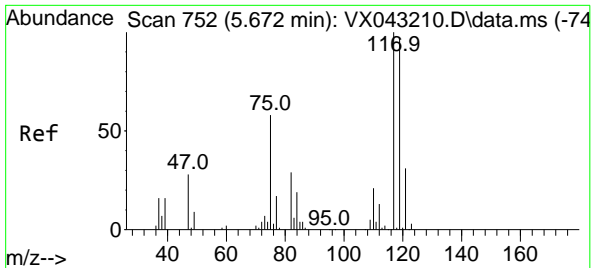
Tgt Ion:113 Resp: 54723
 Ion Ratio Lower Upper
 113 100
 111 102.5 83.4 125.0
 192 17.9 14.1 21.1



#36
 1,1-Dichloropropene
 Concen: 5.102 ug/l
 RT: 5.550 min Scan# 732
 Delta R.T. -0.140 min
 Lab File: VX043251.D
 Acq: 03 Oct 2024 10:57

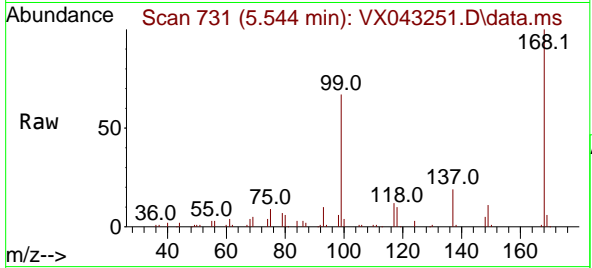
Tgt Ion: 75 Resp: 7327
 Ion Ratio Lower Upper
 75 100
 110 10.2 17.8 53.3#
 77 0.0 24.9 37.3#



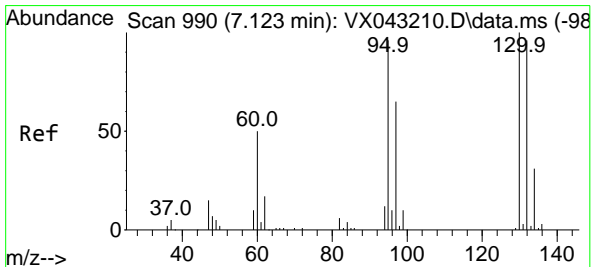
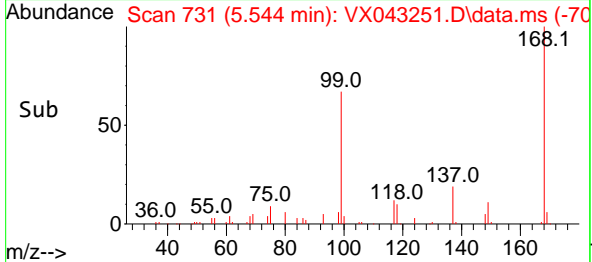
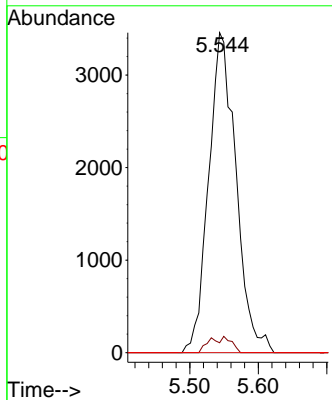


#38
 Carbon Tetrachloride
 Concen: 5.641 ug/l
 RT: 5.544 min Scan# 711
 Delta R.T. -0.128 min
 Lab File: VX043251.D
 Acq: 03 Oct 2024 10:57

Instrument :
 MSVOA_X
 ClientSampleId :

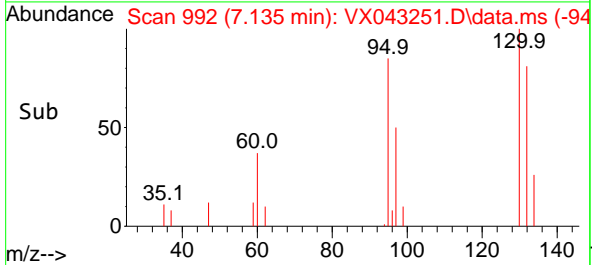
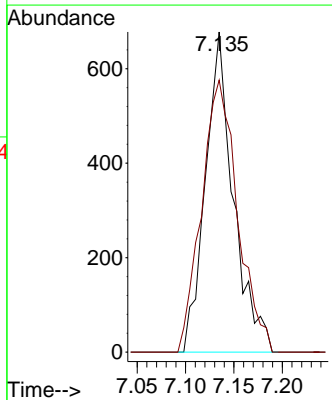
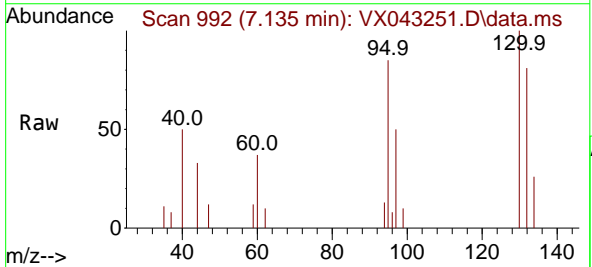


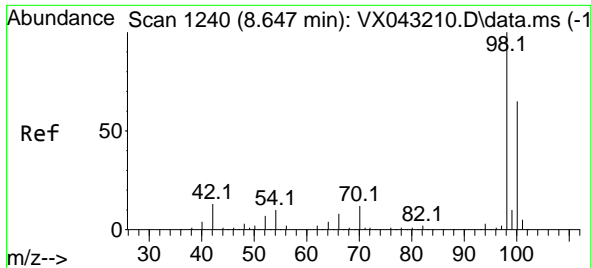
Tgt Ion:117 Resp: 9590
 Ion Ratio Lower Upper
 117 100
 119 3.1 77.7 116.5#
 121 0.0 24.3 36.5#



#44
 Trichloroethene
 Concen: 1.183 ug/l
 RT: 7.135 min Scan# 992
 Delta R.T. 0.012 min
 Lab File: VX043251.D
 Acq: 03 Oct 2024 10:57

Tgt Ion:130 Resp: 1366
 Ion Ratio Lower Upper
 130 100
 95 85.0 0.0 192.2

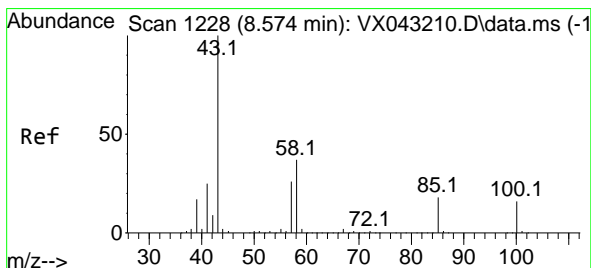
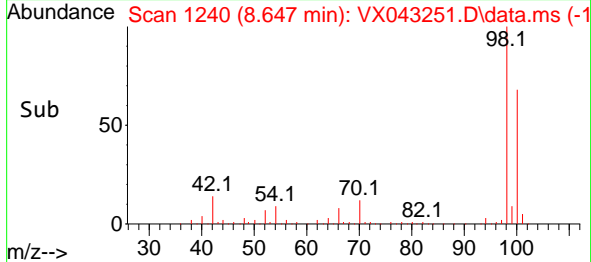
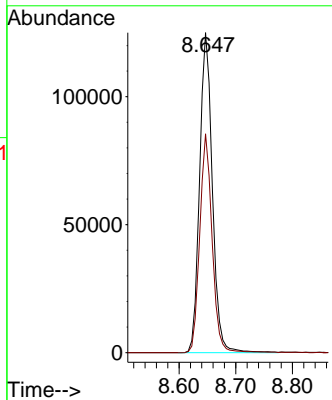
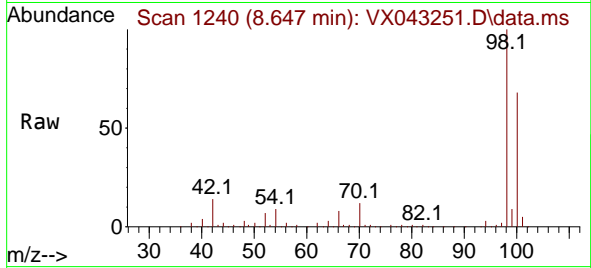




#50
 Toluene-d8
 Concen: 49.666 ug/l
 RT: 8.647 min Scan# 11
 Delta R.T. -0.000 min
 Lab File: VX043251.D
 Acq: 03 Oct 2024 10:57

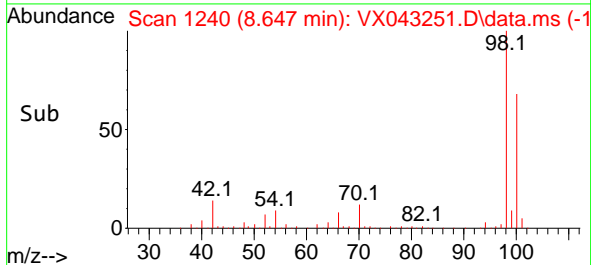
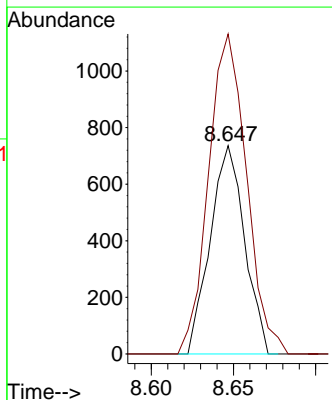
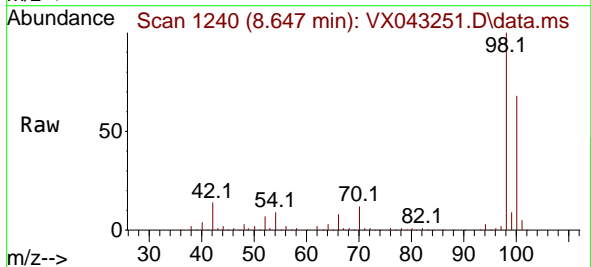
Instrument :
 MSVOA_X
 ClientSampleId :

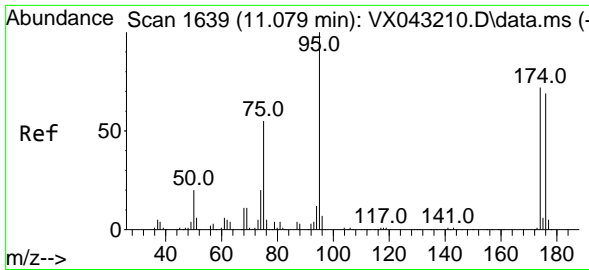
Tgt Ion: 98 Resp: 195658
 Ion Ratio Lower Upper
 98 100
 100 66.3 52.4 78.6



#51
 4-Methyl-2-Pentanone
 Concen: 0.618 ug/l
 RT: 8.647 min Scan# 1240
 Delta R.T. 0.073 min
 Lab File: VX043251.D
 Acq: 03 Oct 2024 10:57

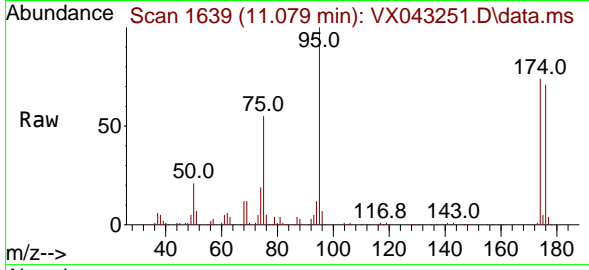
Tgt Ion: 43 Resp: 1070
 Ion Ratio Lower Upper
 43 100
 58 169.6 30.0 45.0#



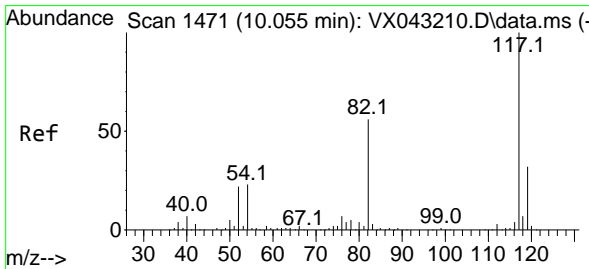
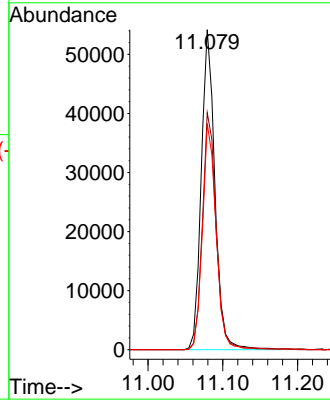
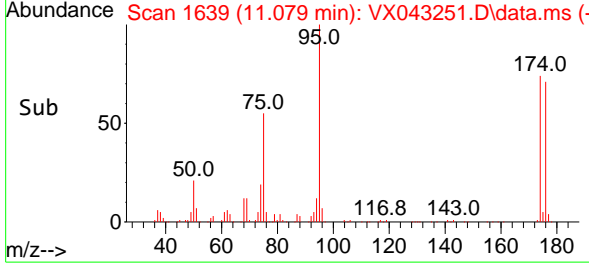


#62
 4-Bromofluorobenzene
 Concen: 48.005 ug/l
 RT: 11.079 min Scan# 1639
 Delta R.T. -0.000 min
 Lab File: VX043251.D
 Acq: 03 Oct 2024 10:57

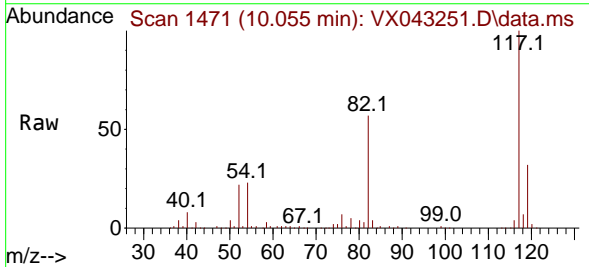
Instrument : MSVOA_X
 ClientSampleId :



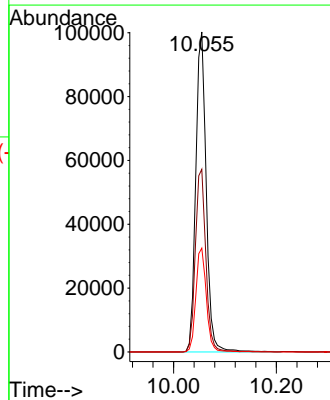
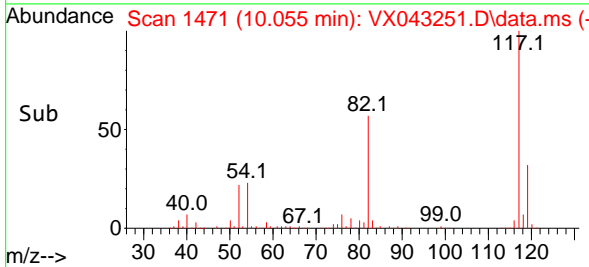
Tgt Ion: 95 Resp: 68704
 Ion Ratio Lower Upper
 95 100
 174 74.6 0.0 145.0
 176 70.9 0.0 143.0

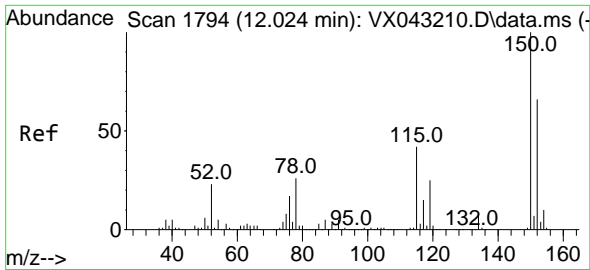


#63
 Chlorobenzene-d5
 Concen: 50.000 ug/l
 RT: 10.055 min Scan# 1471
 Delta R.T. -0.000 min
 Lab File: VX043251.D
 Acq: 03 Oct 2024 10:57



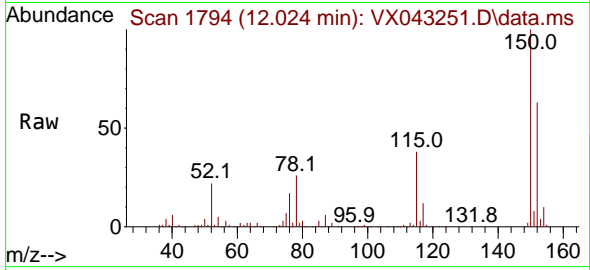
Tgt Ion: 117 Resp: 141753
 Ion Ratio Lower Upper
 117 100
 82 57.1 45.0 67.6
 119 32.5 25.3 37.9



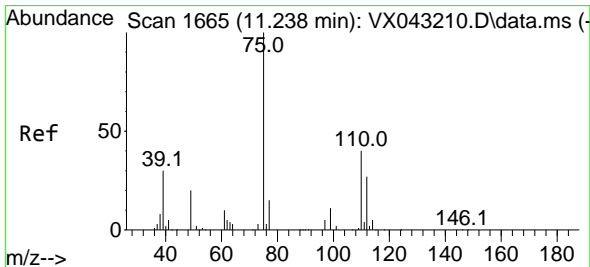
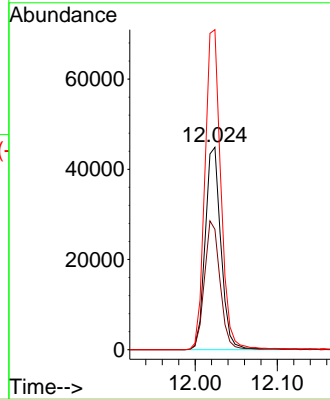
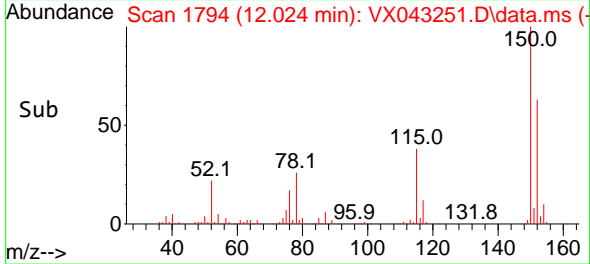


#72
 1,4-Dichlorobenzene-d4
 Concen: 50.000 ug/l
 RT: 12.024 min Scan# 1
 Delta R.T. -0.000 min
 Lab File: VX043251.D
 Acq: 03 Oct 2024 10:57

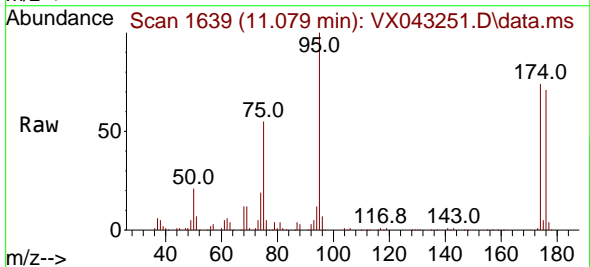
Instrument :
 MSVOA_X
 ClientSampleId :



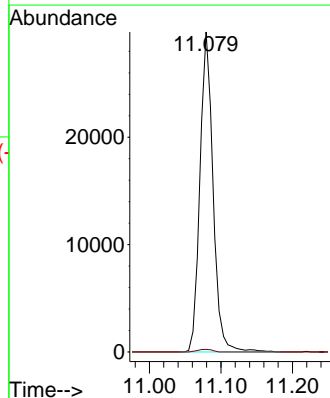
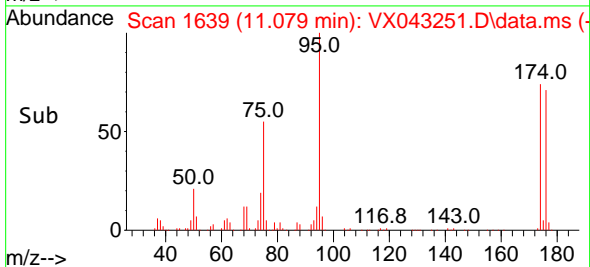
Tgt Ion:152 Resp: 59774
 Ion Ratio Lower Upper
 152 100
 115 63.5 44.1 132.3
 150 160.6 0.0 347.4

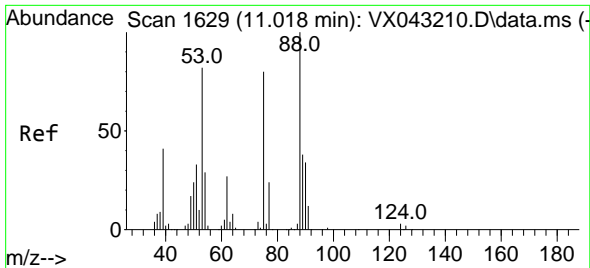


#76
 1,2,3-Trichloropropane
 Concen: 28.595 ug/l
 RT: 11.079 min Scan# 1639
 Delta R.T. -0.159 min
 Lab File: VX043251.D
 Acq: 03 Oct 2024 10:57



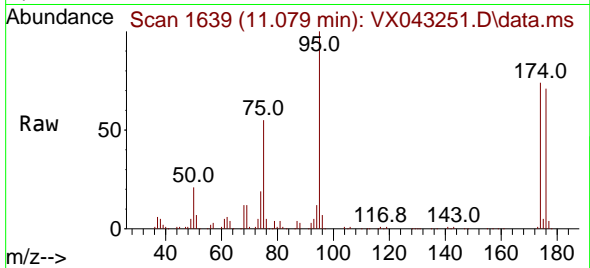
Tgt Ion: 75 Resp: 37913
 Ion Ratio Lower Upper
 75 100
 77 0.9 22.0 66.0#





#81
 trans-1,4-Dichloro-2-butene
 Concen: 74.109 ug/l
 RT: 11.079 min Scan# 10
 Delta R.T. 0.061 min
 Lab File: VX043251.D
 Acq: 03 Oct 2024 10:57

Instrument :
 MSVOA_X
 ClientSampleId :



Tgt Ion: 75 Resp: 37913

Ion	Ratio	Lower	Upper
75	100		
53	0.0	83.9	125.9#
89	0.0	38.6	58.0#

