

Data Path : Z:\voasrv\HPCHEM1\MSVOA_X\Data\VX100422\
 Data File : VX031872.D
 Acq On : 04 Oct 2022 16:19
 Operator : JC/MD
 Sample : N4762-06
 Misc : 7.08g/5mL/100uL/5.00mL/MSVOA_X/MEOH
 ALS Vial : 12 Sample Multiplier: 1

Instrument :
 MSVOA_X
 ClientSampleId :
 D22017-(6-6.5)

Integration Parameters: RTEINT.P

Integrator: RTE
 Smoothing : ON Filtering: 5
 Sampling : 1 Min Area: 3 % of largest Peak
 Start Thrs: 0.2 Max Peaks: 100
 Stop Thrs : 0 Peak Location: TOP

If leading or trailing edge < 100 prefer < Baseline drop else tangent >
 Peak separation: 5

Method : Z:\voasrv\HPCHEM1\MSVOA_X\Method\82X100322W.M
 Title : SW846 8260

Signal : TIC: VX031872.D\data.ms

peak #	R.T. min	first scan	max scan	last scan	PK TY	peak height	corr. area	corr. % max.	% of total
1	1.733	101	106	117	rBV	1439582	1702981	5.17%	0.510%
2	1.916	132	136	150	rVB	509670	728005	2.21%	0.218%
3	2.758	255	274	277	rBV2	610794	1436377	4.36%	0.431%
4	2.800	277	281	293	rVB	1643816	3654342	11.10%	1.095%
5	3.081	315	327	346	rVB	1236213	2770477	8.41%	0.830%
6	3.428	374	384	397	rVV	1043619	2330588	7.08%	0.699%
7	3.715	423	431	440	rVB	336588	792483	2.41%	0.238%
8	4.087	478	492	500	rVB2	268639	782249	2.38%	0.234%
9	4.196	500	510	517	rVV	431737	1262255	3.83%	0.378%
10	4.288	517	525	537	rVB	1340195	3771423	11.45%	1.130%
11	5.178	644	671	689	rBV5	284384	1230159	3.74%	0.369%
12	5.489	709	722	731	rVV4	1070839	4588388	13.94%	1.375%
13	5.611	733	742	763	rVB	960361	3481457	10.57%	1.044%
14	5.818	763	776	789	rBV	1167449	3461873	10.51%	1.038%
15	6.031	804	811	820	rVV	315994	871356	2.65%	0.261%
16	6.153	820	831	837	rVV2	447238	1591681	4.83%	0.477%
17	6.245	837	846	856	rVV	2343763	7245757	22.01%	2.172%
18	6.354	856	864	875	rVB2	449565	1302726	3.96%	0.390%
19	6.604	892	905	914	rBV2	1043477	2531134	7.69%	0.759%
20	6.842	922	944	956	rVB5	610036	2897149	8.80%	0.868%
21	7.379	1018	1032	1043	rBV2	1928749	4941052	15.01%	1.481%
22	7.495	1043	1051	1056	rBV	653375	1327310	4.03%	0.398%
23	7.555	1056	1061	1067	rBV	601905	1182046	3.59%	0.354%
24	7.653	1072	1077	1088	rVB	380518	741459	2.25%	0.222%
25	7.982	1121	1131	1143	rVB	1790120	3902283	11.85%	1.170%
26	8.104	1143	1151	1160	rBV2	2107256	5002925	15.20%	1.500%
27	8.190	1160	1165	1174	rVB3	792538	1555839	4.73%	0.466%
28	8.275	1174	1179	1182	rBV	1095844	1796841	5.46%	0.539%
29	8.311	1182	1185	1191	rVB2	662253	1043032	3.17%	0.313%
30	8.433	1200	1205	1213	rBV	1179573	2146356	6.52%	0.643%
31	8.507	1213	1217	1226	rVB4	473957	928980	2.82%	0.278%
32	8.616	1226	1235	1247	rBV4	2035284	5338690	16.22%	1.600%
33	8.909	1277	1283	1290	rBV2	1351332	2216391	6.73%	0.664%
34	8.976	1290	1294	1305	rVB4	373433	895528	2.72%	0.268%
35	9.098	1305	1314	1320	rBV3	432072	1039521	3.16%	0.312%
36	9.195	1327	1330	1341	rVB2	474333	815307	2.48%	0.244%

Data Path : Z:\voasrv\HPCHEM1\MSVOA_X\Data\VX100422\
 Data File : VX031872.D
 Acq On : 04 Oct 2022 16:19
 Operator : JC/MD
 Sample : N4762-06
 Misc : 7.08g/5mL/100uL/5.00mL/MSVOA_X/MEOH
 ALS Vial : 12 Sample Multiplier: 1

Instrument :
 MSVOA_X
 ClientSampleId :
 D22017-(6-6.5)

Integration Parameters: RTEINT.P

Integrator: RTE
 Smoothing : ON Filtering: 5
 Sampling : 1 Min Area: 3 % of largest Peak
 Start Thrs: 0.2 Max Peaks: 100
 Stop Thrs : 0 Peak Location: TOP

If leading or trailing edge < 100 prefer < Baseline drop else tangent >
 Peak separation: 5

Method : Z:\voasrv\HPCHEM1\MSVOA_X\Method\82X100322W.M
 Title : SW846 8260

37	9.500	1375	1380	1386	rBV3	681076	1254143	3.81%	0.376%
38	9.817	1428	1432	1437	rBV2	335467	690284	2.10%	0.207%
39	9.903	1442	1446	1452	rVV	1264929	1857431	5.64%	0.557%
40	10.006	1455	1463	1468	rVV	1028636	1494254	4.54%	0.448%
41	10.104	1475	1479	1485	rVV2	360127	761227	2.31%	0.228%
42	10.195	1489	1494	1500	rVV	9159548	12854692	39.04%	3.853%
43	10.305	1500	1512	1518	rVV	17517694	26245109	79.71%	7.867%
44	10.360	1518	1521	1532	rVB2	1456239	2332675	7.09%	0.699%
45	10.585	1552	1558	1562	rBV2	525443	759576	2.31%	0.228%
46	10.781	1582	1590	1594	rBV2	549930	907514	2.76%	0.272%
47	10.860	1594	1603	1607	rBV3	485207	909066	2.76%	0.272%
48	10.963	1614	1620	1624	rBV	1256433	1706015	5.18%	0.511%
49	11.085	1634	1640	1642	rVV2	873278	1264961	3.84%	0.379%
50	11.116	1642	1645	1651	rVB2	897081	1455901	4.42%	0.436%
51	11.189	1651	1657	1661	rBV	595014	895449	2.72%	0.268%
52	11.305	1666	1676	1684	rVV	3847085	5425189	16.48%	1.626%
53	11.402	1684	1692	1696	rVV	7567965	12435440	37.77%	3.727%
54	11.457	1696	1701	1712	rVB	7541881	11010900	33.44%	3.300%
55	11.616	1722	1727	1734	rBV	3929088	5100910	15.49%	1.529%
56	11.762	1745	1751	1758	rVB	25573397	32923874	100.00%	9.869%
57	11.890	1770	1772	1776	rVB	576257	699463	2.12%	0.210%
58	11.975	1783	1786	1789	rVB	787899	873199	2.65%	0.262%
59	12.024	1789	1794	1799	rBV4	773001	1405159	4.27%	0.421%
60	12.091	1799	1805	1810	rBV	6748995	8617937	26.18%	2.583%
61	12.250	1826	1831	1833	rBV	5828453	8009663	24.33%	2.401%
62	12.323	1838	1843	1849	rVB3	5894440	9583463	29.11%	2.873%
63	12.420	1849	1859	1863	rBV3	980942	1893900	5.75%	0.568%
64	12.463	1863	1866	1873	rVB	1701237	2306320	7.01%	0.691%
65	12.536	1873	1878	1880	rBV	3285455	4615609	14.02%	1.383%
66	12.561	1880	1882	1887	rVV	3036351	3260070	9.90%	0.977%
67	12.616	1887	1891	1894	rVV	5357308	6279428	19.07%	1.882%
68	12.646	1894	1896	1900	rVV	894773	1038430	3.15%	0.311%
69	12.701	1900	1905	1914	rVB2	2456547	4289924	13.03%	1.286%
70	12.847	1926	1929	1933	rVB2	1192906	1459825	4.43%	0.438%
71	12.926	1933	1942	1945	rBV	2880918	4314645	13.10%	1.293%
72	12.963	1945	1948	1955	rVB	3914875	5209709	15.82%	1.562%
73	13.030	1955	1959	1960	rBV	723647	1004133	3.05%	0.301%
74	13.048	1960	1962	1964	rVV2	899174	981376	2.98%	0.294%
75	13.170	1975	1982	1986	rVB2	2909739	3850640	11.70%	1.154%
76	13.213	1986	1989	1992	rVB2	756404	825466	2.51%	0.247%

Data Path : Z:\voasrv\HPCHEM1\MSVOA_X\Data\VX100422\
 Data File : VX031872.D
 Acq On : 04 Oct 2022 16:19
 Operator : JC/MD
 Sample : N4762-06
 Misc : 7.08g/5mL/100uL/5.00mL/MSVOA_X/MEOH
 ALS Vial : 12 Sample Multiplier: 1

Instrument :
 MSVOA_X
 ClientSampleId :
 D22017-(6-6.5)

Integration Parameters: RTEINT.P

Integrator: RTE
 Smoothing : ON Filtering: 5
 Sampling : 1 Min Area: 3 % of largest Peak
 Start Thrs: 0.2 Max Peaks: 100
 Stop Thrs : 0 Peak Location: TOP

If leading or trailing edge < 100 prefer < Baseline drop else tangent >
 Peak separation: 5

Method : Z:\voasrv\HPCHEM1\MSVOA_X\Method\82X100322W.M
 Title : SW846 8260

77	13.268	1992	1998	1999	rBV3	1138474	1958210	5.95%	0.587%
78	13.292	1999	2002	2008	rVB2	5182420	7022105	21.33%	2.105%
79	13.372	2013	2015	2020	rVV2	691584	916975	2.79%	0.275%
80	13.426	2020	2024	2033	rVB2	1364583	2361800	7.17%	0.708%
81	13.506	2033	2037	2040	rBV2	766498	1066476	3.24%	0.320%
82	13.542	2040	2043	2046	rBV	1046752	1327312	4.03%	0.398%
83	13.585	2046	2050	2056	rVV3	1410527	2429416	7.38%	0.728%
84	13.664	2060	2063	2069	rVB2	991208	1620484	4.92%	0.486%
85	13.780	2077	2082	2088	rVB	4473596	6146596	18.67%	1.842%
86	13.847	2088	2093	2100	rVB6	809128	1817049	5.52%	0.545%
87	13.926	2100	2106	2111	rBV3	982963	1786881	5.43%	0.536%
88	14.079	2127	2131	2134	rBV2	1109363	1415152	4.30%	0.424%
89	14.219	2149	2154	2163	rVB2	1293054	2629053	7.99%	0.788%
90	14.323	2167	2171	2176	rBV	580438	781031	2.37%	0.234%
91	14.371	2176	2179	2183	rVB	852658	995687	3.02%	0.298%
92	14.481	2193	2197	2206	rBV5	721810	1581129	4.80%	0.474%
93	14.640	2215	2223	2227	rVV	6133044	8787702	26.69%	2.634%
94	14.780	2242	2246	2251	rVV	2905341	3803282	11.55%	1.140%
95	15.182	2307	2312	2314	rBV	492397	711368	2.16%	0.213%
96	15.377	2339	2344	2347	rBV	704437	976074	2.96%	0.293%
97	15.481	2355	2361	2367	rBV	1559281	2355284	7.15%	0.706%
98	15.615	2378	2383	2386	rBV	1615087	2394032	7.27%	0.718%
99	15.652	2386	2389	2398	rVB	1016868	1560788	4.74%	0.468%
100	15.834	2411	2419	2430	rVB	389157	1070260	3.25%	0.321%

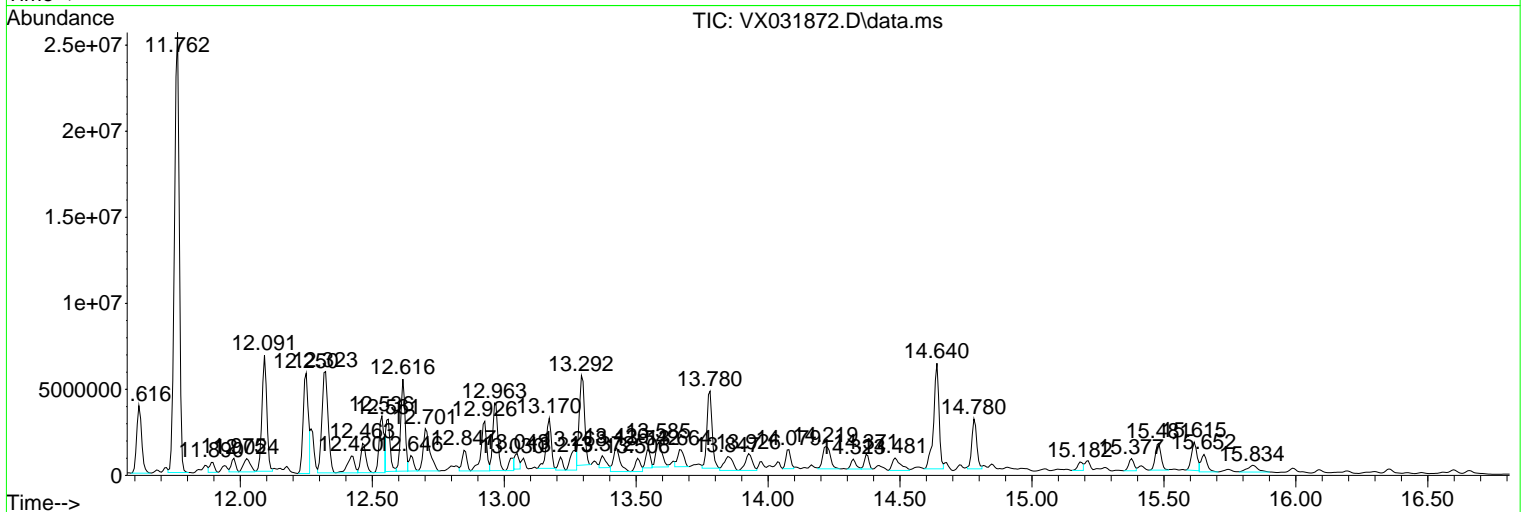
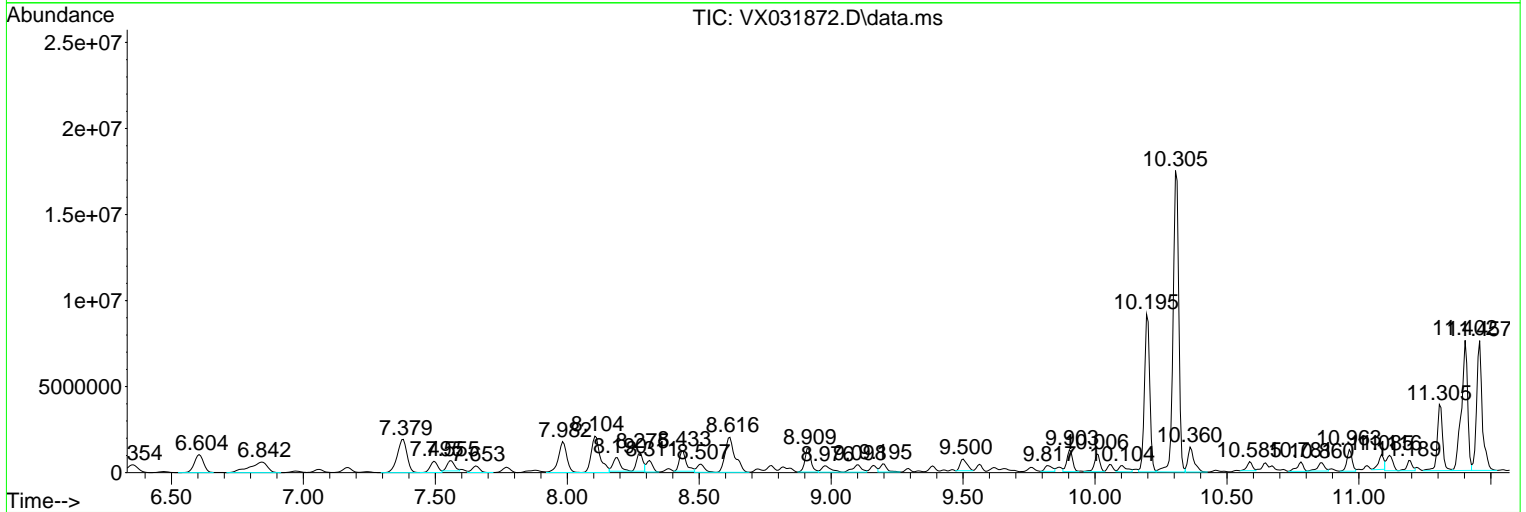
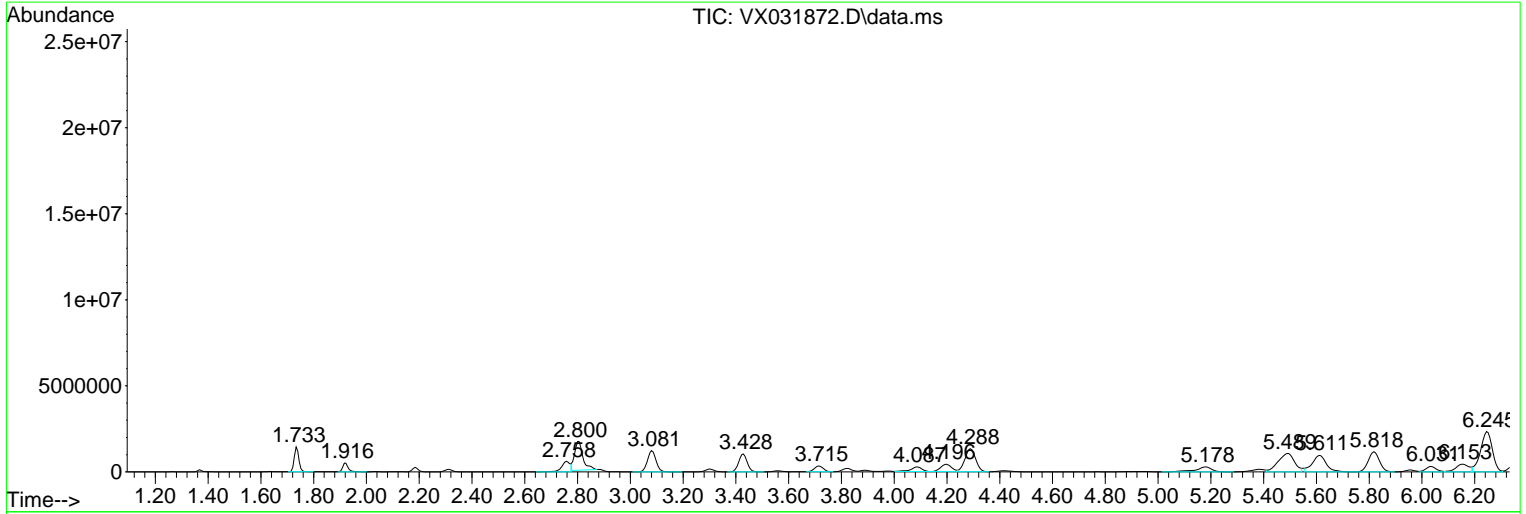
Sum of corrected areas: 333623535

Data Path : Z:\voasrv\HPCHEM1\MSVOA_X\Data\VX100422\
 Data File : VX031872.D
 Acq On : 04 Oct 2022 16:19
 Operator : JC/MD
 Sample : N4762-06
 Misc : 7.08g/5mL/100uL/5.00mL/MSVOA_X/MEOH
 ALS Vial : 12 Sample Multiplier: 1

Instrument :
 MSVOA_X
 ClientSampleId :
 D22017-(6-6.5)

Quant Method : Z:\voasrv\HPCHEM1\MSVOA_X\Method\82X100322W.M
 Quant Title : SW846 8260

TIC Library : C:\Database\NIST20.L
 TIC Integration Parameters: LSCINT.P



Data Path : Z:\voasrv\HPCHEM1\MSVOA_X\Data\VX100422\
 Data File : VX031872.D
 Acq On : 04 Oct 2022 16:19
 Operator : JC/MD
 Sample : N4762-06
 Misc : 7.08g/5mL/100uL/5.00mL/MSVOA_X/MEOH
 ALS Vial : 12 Sample Multiplier: 1

Instrument :
 MSVOA_X
 ClientSampleId :
 D22017-(6-6.5)

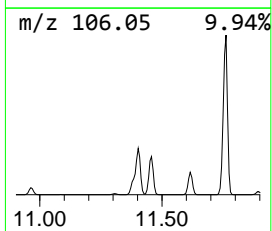
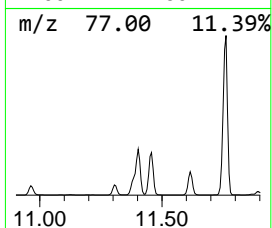
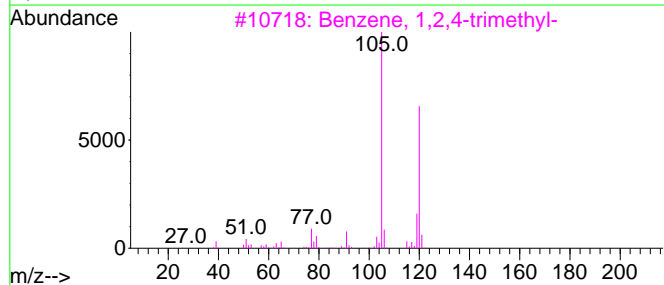
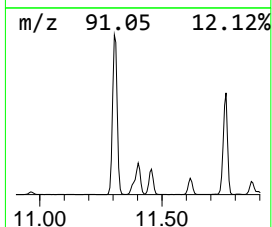
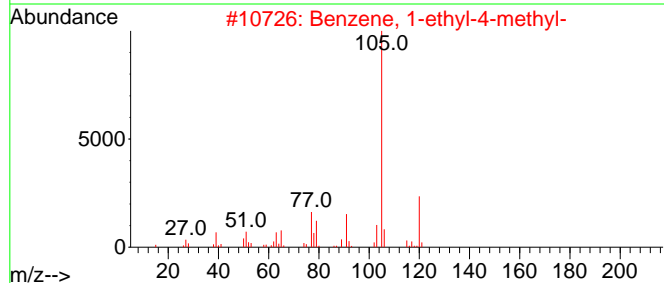
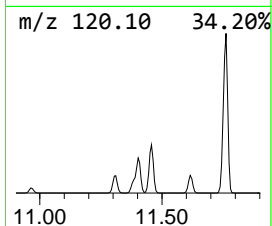
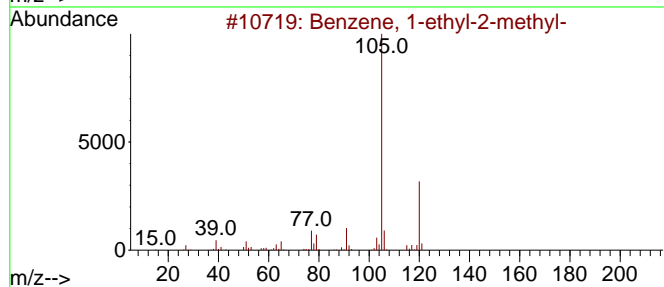
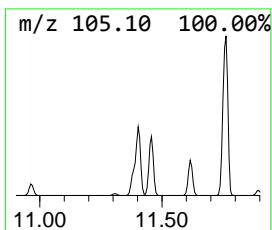
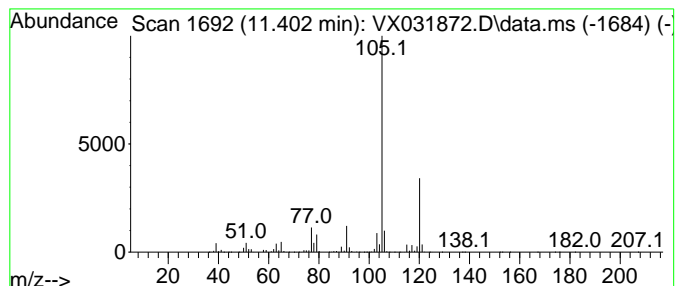
Quant Method : Z:\voasrv\HPCHEM1\MSVOA_X\Method\82X100322W.M
 Quant Title : SW846 8260

TIC Library : C:\Database\NIST20.L
 TIC Integration Parameters: LSCINT.P

 Peak Number 1 Benzene, 1-ethyl-2-methyl- Concentration Rank 1

R.T.	EstConc	Area	Relative to ISTD	R.T.
11.402	442.49 ug/l	12435400	1,4-Dichlorobenzene-d4	12.024

Hit#	of	5	Tentative ID	MW	MolForm	CAS#	Qual
1			Benzene, 1-ethyl-2-methyl-	120	C9H12	000611-14-3	95
2			Benzene, 1-ethyl-4-methyl-	120	C9H12	000622-96-8	93
3			Benzene, 1,2,4-trimethyl-	120	C9H12	000095-63-6	91
4			Mesitylene	120	C9H12	000108-67-8	91
5			Benzene, 1-ethyl-3-methyl-	120	C9H12	000620-14-4	91



Data Path : Z:\voasrv\HPCHEM1\MSVOA_X\Data\VX100422\
 Data File : VX031872.D
 Acq On : 04 Oct 2022 16:19
 Operator : JC/MD
 Sample : N4762-06
 Misc : 7.08g/5mL/100uL/5.00mL/MSVOA_X/MEOH
 ALS Vial : 12 Sample Multiplier: 1

Instrument :
 MSVOA_X
 ClientSampleId :
 D22017-(6-6.5)

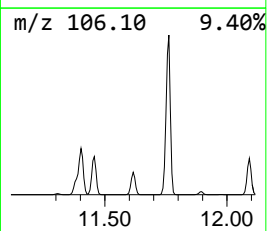
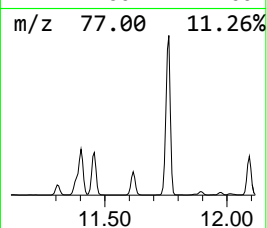
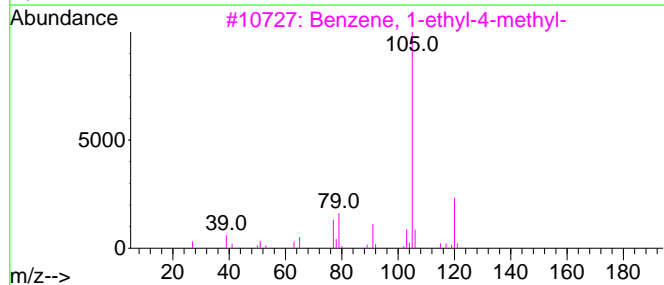
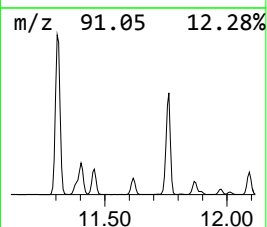
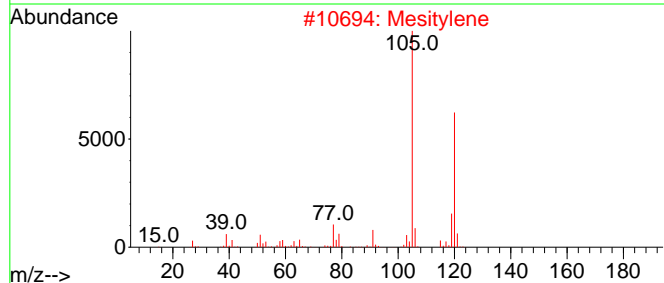
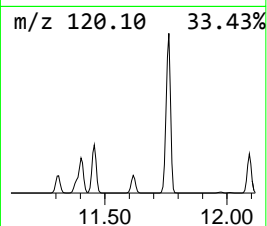
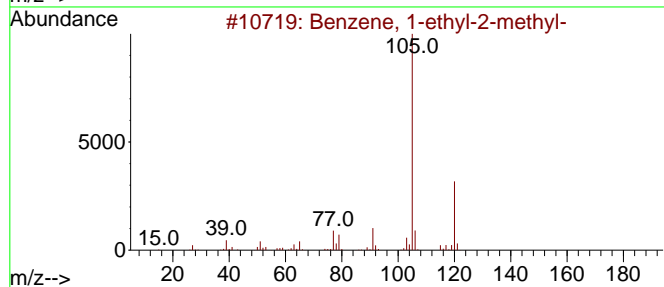
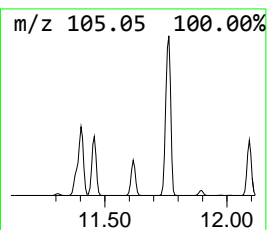
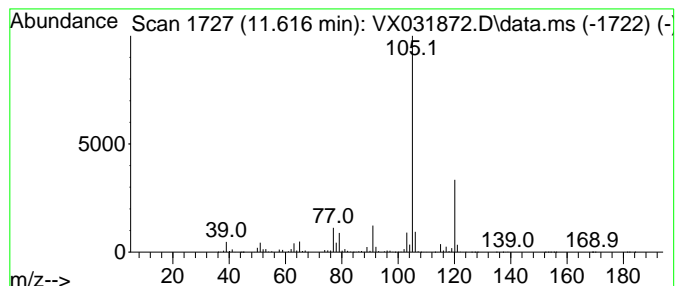
Quant Method : Z:\voasrv\HPCHEM1\MSVOA_X\Method\82X100322W.M
 Quant Title : SW846 8260

TIC Library : C:\Database\NIST20.L
 TIC Integration Parameters: LSCINT.P

 Peak Number 2 Benzene, 1-ethyl-3-methyl- Concentration Rank 8

R.T.	EstConc	Area	Relative to ISTD	R.T.
11.616	181.51 ug/l	5100910	1,4-Dichlorobenzene-d4	12.024

Hit#	of	5	Tentative ID	MW	MolForm	CAS#	Qual
1			Benzene, 1-ethyl-2-methyl-	120	C9H12	000611-14-3	94
2			Mesitylene	120	C9H12	000108-67-8	91
3			Benzene, 1-ethyl-4-methyl-	120	C9H12	000622-96-8	91
4			Benzene, 1-ethyl-3-methyl-	120	C9H12	000620-14-4	91
5			Benzene, 1,2,3-trimethyl-	120	C9H12	000526-73-8	91



Data Path : Z:\voasrv\HPCHEM1\MSVOA_X\Data\VX100422\
 Data File : VX031872.D
 Acq On : 04 Oct 2022 16:19
 Operator : JC/MD
 Sample : N4762-06
 Misc : 7.08g/5mL/100uL/5.00mL/MSVOA_X/MEOH
 ALS Vial : 12 Sample Multiplier: 1

Instrument :
 MSVOA_X
 ClientSampleId :
 D22017-(6-6.5)

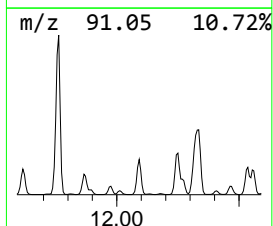
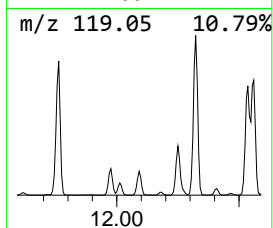
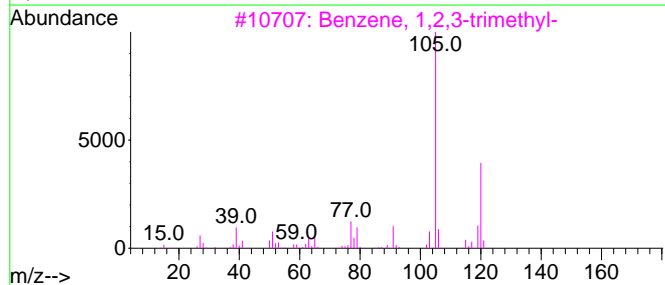
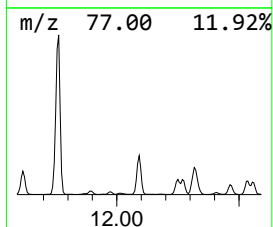
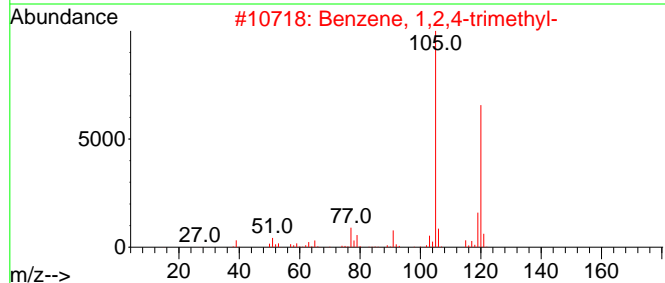
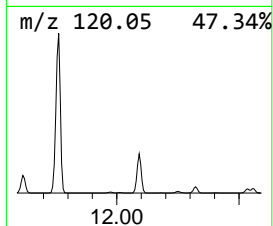
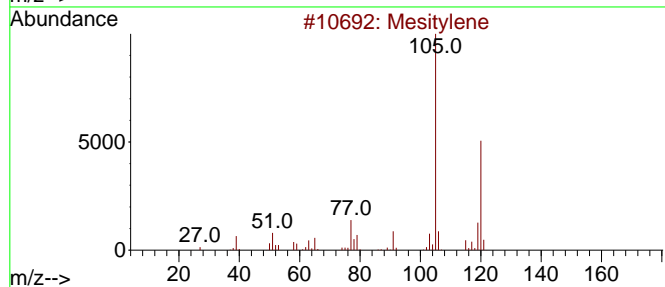
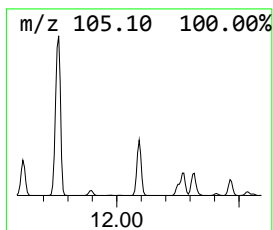
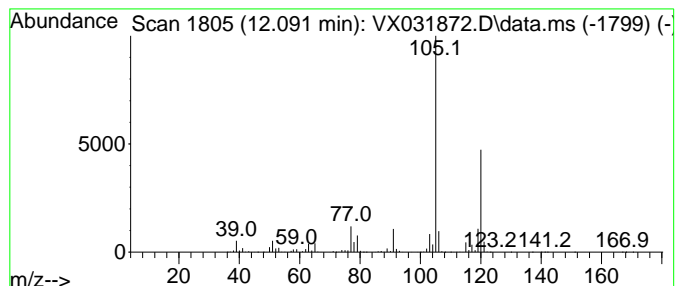
Quant Method : Z:\voasrv\HPCHEM1\MSVOA_X\Method\82X100322W.M
 Quant Title : SW846 8260

TIC Library : C:\Database\NIST0.L
 TIC Integration Parameters: LSCINT.P

 Peak Number 3 Benzene, 1,2,4-trimethyl- Concentration Rank 3

R.T.	EstConc	Area	Relative to ISTD	R.T.
12.091	306.65 ug/l	8617940	1,4-Dichlorobenzene-d4	12.024

Hit#	of	5	Tentative ID	MW	MolForm	CAS#	Qual
1			Mesitylene	120	C9H12	000108-67-8	97
2			Benzene, 1,2,4-trimethyl-	120	C9H12	000095-63-6	94
3			Benzene, 1,2,3-trimethyl-	120	C9H12	000526-73-8	94
4			Benzene, 1-ethyl-3-methyl-	120	C9H12	000620-14-4	91
5			Benzene, 1-ethyl-4-methyl-	120	C9H12	000622-96-8	91



Data Path : Z:\voasrv\HPCHEM1\MSVOA_X\Data\VX100422\
 Data File : VX031872.D
 Acq On : 04 Oct 2022 16:19
 Operator : JC/MD
 Sample : N4762-06
 Misc : 7.08g/5mL/100uL/5.00mL/MSVOA_X/MEOH
 ALS Vial : 12 Sample Multiplier: 1

Instrument :
 MSVOA_X
 ClientSampleId :
 D22017-(6-6.5)

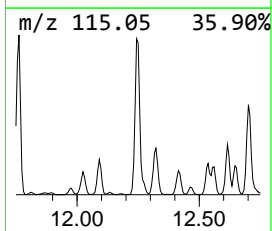
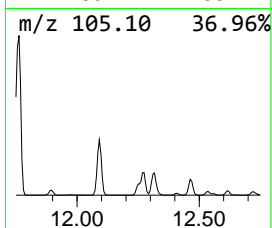
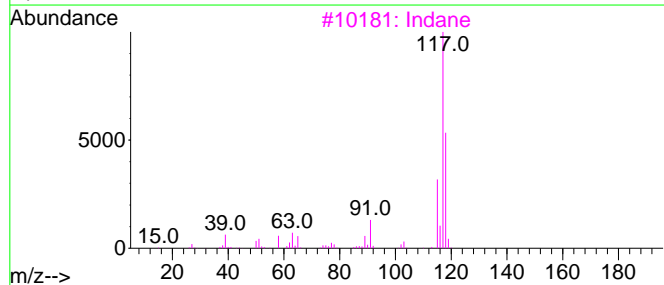
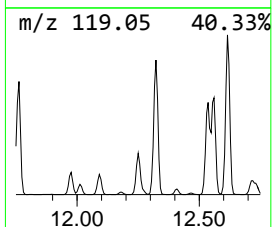
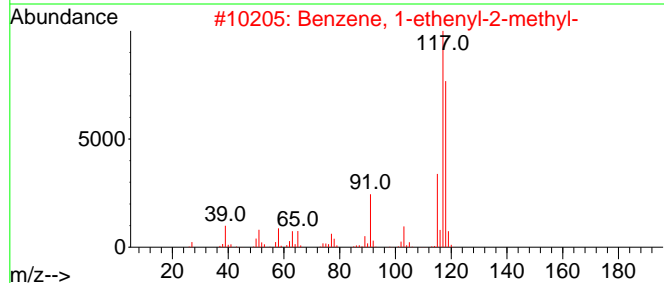
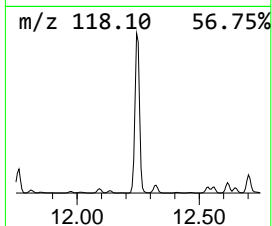
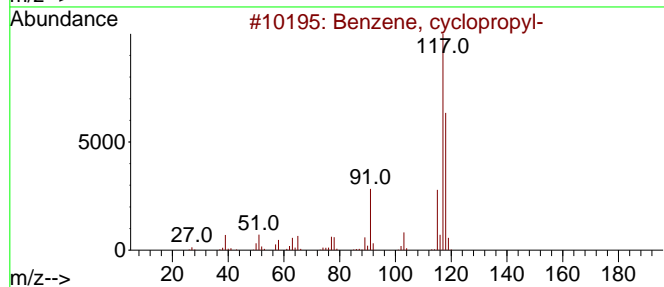
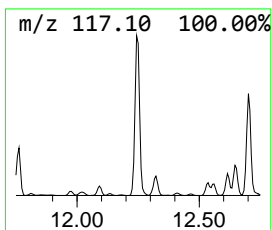
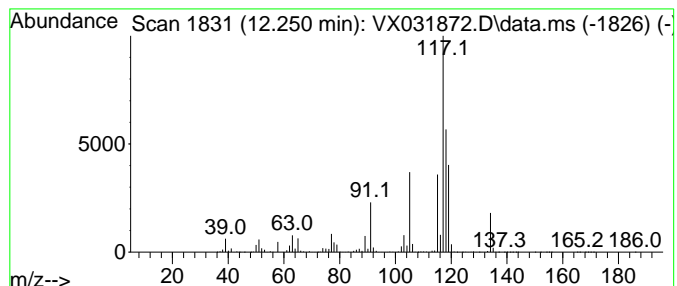
Quant Method : Z:\voasrv\HPCHEM1\MSVOA_X\Method\82X100322W.M
 Quant Title : SW846 8260

TIC Library : C:\Database\NIST20.L
 TIC Integration Parameters: LSCINT.P

 Peak Number 4 Benzene, cyclopropyl- Concentration Rank 4

R.T.	EstConc	Area	Relative to ISTD	R.T.
12.250	285.01 ug/l	8009660	1,4-Dichlorobenzene-d4	12.024

Hit#	of	5	Tentative ID	MW	MolForm	CAS#	Qual
1			Benzene, cyclopropyl-	118	C9H10	000873-49-4	87
2			Benzene, 1-ethenyl-2-methyl-	118	C9H10	000611-15-4	87
3			Indane	118	C9H10	000496-11-7	55
4			Benzene, 2-propenyl-	118	C9H10	000300-57-2	55
5			Benzene, 1-propenyl-	118	C9H10	000637-50-3	55



Data Path : Z:\voasrv\HPCHEM1\MSVOA_X\Data\VX100422\
 Data File : VX031872.D
 Acq On : 04 Oct 2022 16:19
 Operator : JC/MD
 Sample : N4762-06
 Misc : 7.08g/5mL/100uL/5.00mL/MSVOA_X/MEOH
 ALS Vial : 12 Sample Multiplier: 1

Instrument :
 MSVOA_X
 ClientSampleId :
 D22017-(6-6.5)

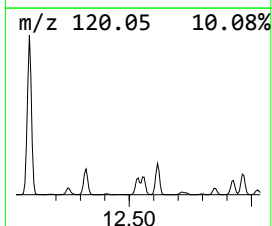
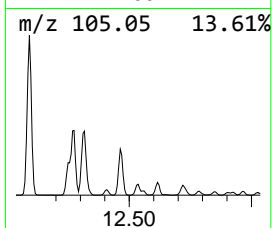
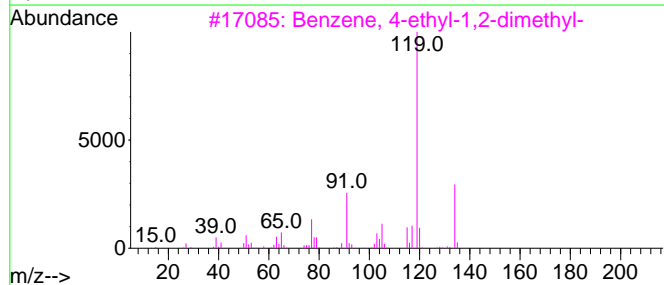
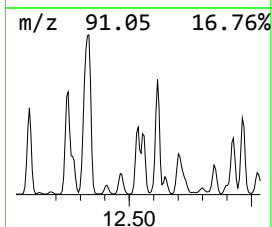
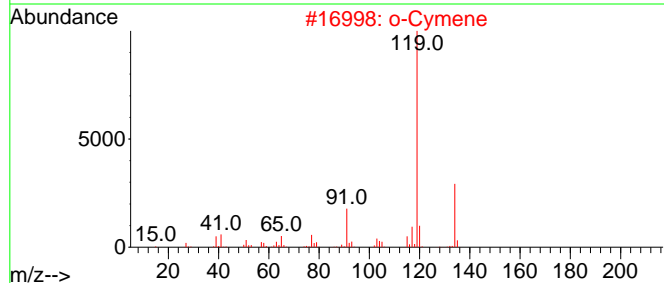
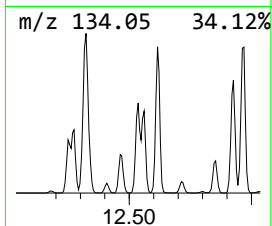
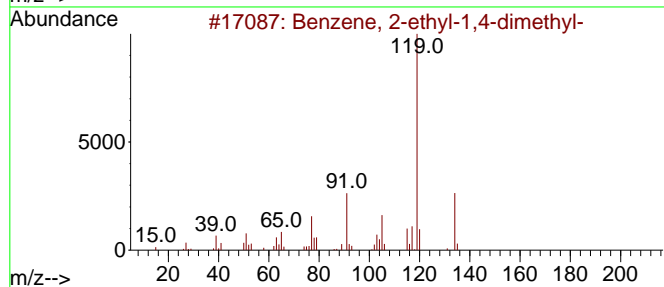
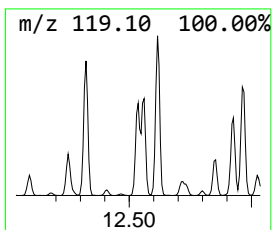
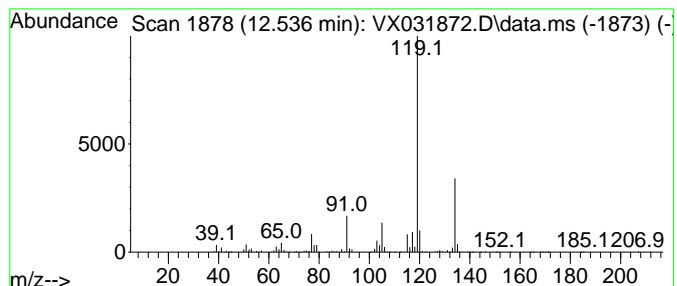
Quant Method : Z:\voasrv\HPCHEM1\MSVOA_X\Method\82X100322W.M
 Quant Title : SW846 8260

TIC Library : C:\Database\NIST20.L
 TIC Integration Parameters: LSCINT.P

 Peak Number 5 Benzene, 2-ethyl-1,4-dimethyl- Concentration Rank 9

R.T.	EstConc	Area	Relative to ISTD	R.T.
12.536	164.24 ug/l	4615610	1,4-Dichlorobenzene-d4	12.024

Hit#	of	5	Tentative ID	MW	MolForm	CAS#	Qual
1			Benzene, 2-ethyl-1,4-dimethyl-	134	C10H14	001758-88-9	96
2			o-Cymene	134	C10H14	000527-84-4	95
3			Benzene, 4-ethyl-1,2-dimethyl-	134	C10H14	000934-80-5	95
4			Benzene, 1-ethyl-2,3-dimethyl-	134	C10H14	000933-98-2	95
5			Benzene, 1-methyl-3-(1-methyleth...	134	C10H14	000535-77-3	94



Data Path : Z:\voasrv\HPCHEM1\MSVOA_X\Data\VX100422\
 Data File : VX031872.D
 Acq On : 04 Oct 2022 16:19
 Operator : JC/MD
 Sample : N4762-06
 Misc : 7.08g/5mL/100uL/5.00mL/MSVOA_X/MEOH
 ALS Vial : 12 Sample Multiplier: 1

Instrument :
 MSVOA_X
 ClientSampleId :
 D22017-(6-6.5)

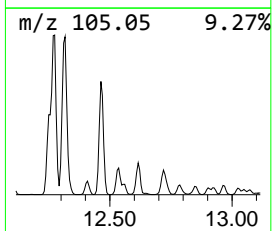
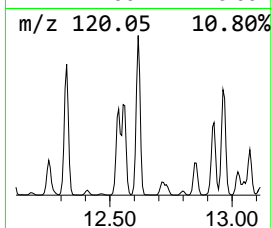
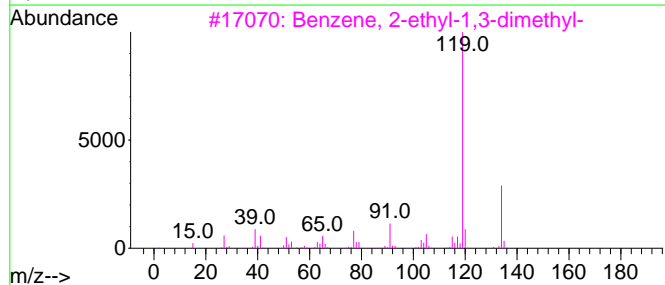
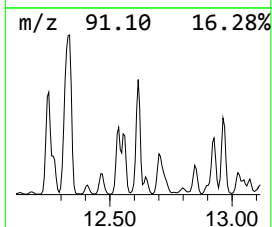
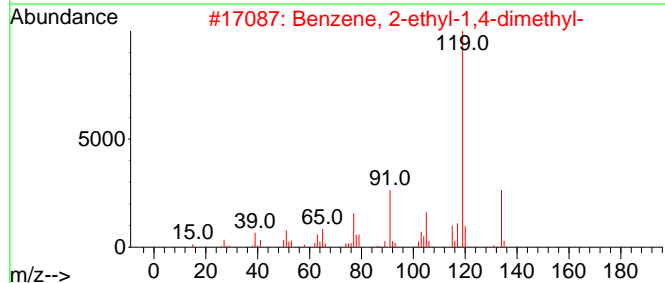
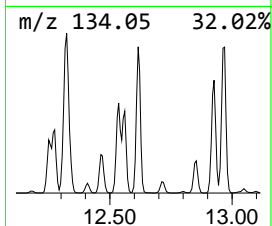
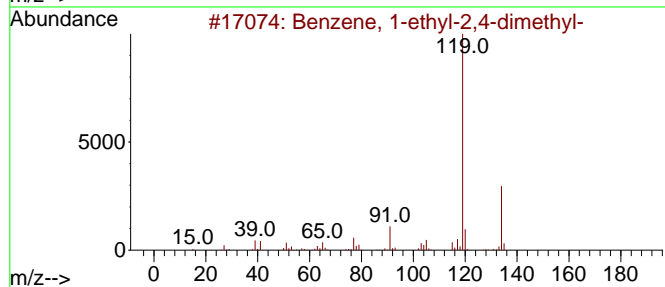
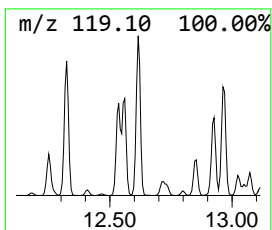
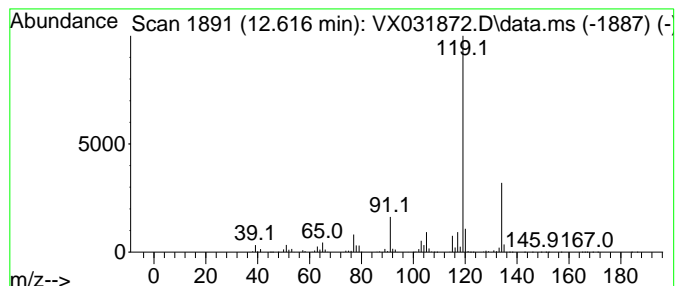
Quant Method : Z:\voasrv\HPCHEM1\MSVOA_X\Method\82X100322W.M
 Quant Title : SW846 8260

TIC Library : C:\Database\NIST0.L
 TIC Integration Parameters: LSCINT.P

 Peak Number 6 Benzene, 1-ethyl-2,4-dimethyl- Concentration Rank 6

R.T.	EstConc	Area	Relative to ISTD	R.T.
12.616	223.44 ug/l	6279430	1,4-Dichlorobenzene-d4	12.024

Hit#	of 5	Tentative ID	MW	MolForm	CAS#	Qual
1		Benzene, 1-ethyl-2,4-dimethyl-	134	C10H14	000874-41-9	97
2		Benzene, 2-ethyl-1,4-dimethyl-	134	C10H14	001758-88-9	96
3		Benzene, 2-ethyl-1,3-dimethyl-	134	C10H14	002870-04-4	95
4		Benzene, 1-ethyl-2,3-dimethyl-	134	C10H14	000933-98-2	95
5		o-Cymene	134	C10H14	000527-84-4	95



Data Path : Z:\voasrv\HPCHEM1\MSVOA_X\Data\VX100422\
 Data File : VX031872.D
 Acq On : 04 Oct 2022 16:19
 Operator : JC/MD
 Sample : N4762-06
 Misc : 7.08g/5mL/100uL/5.00mL/MSVOA_X/MEOH
 ALS Vial : 12 Sample Multiplier: 1

Instrument :
 MSVOA_X
 ClientSampleId :
 D22017-(6-6.5)

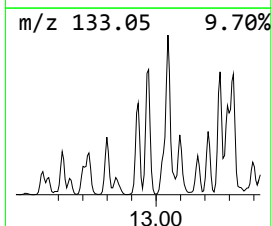
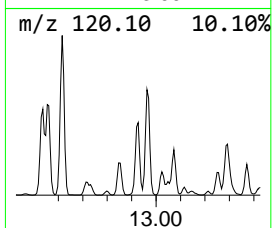
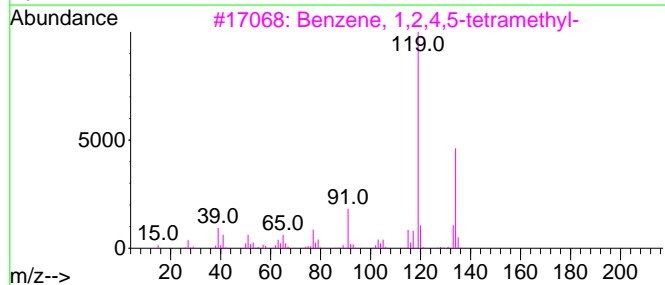
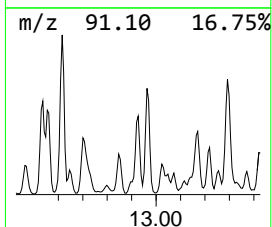
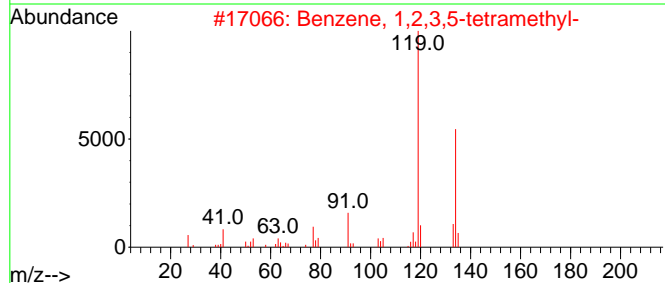
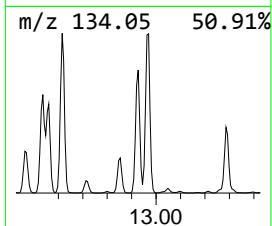
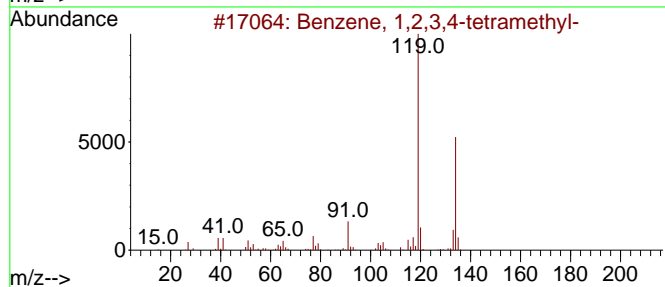
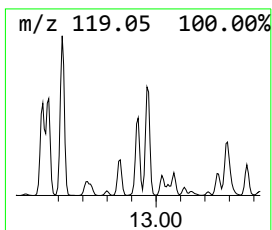
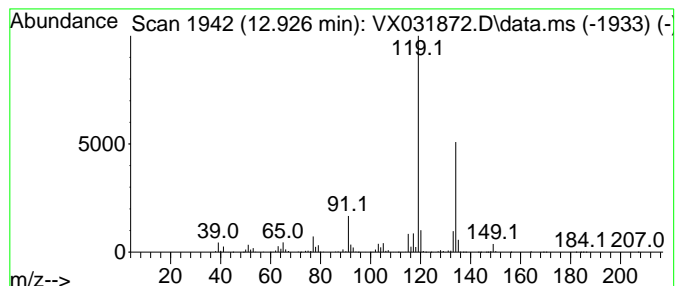
Quant Method : Z:\voasrv\HPCHEM1\MSVOA_X\Method\82X100322W.M
 Quant Title : SW846 8260

TIC Library : C:\Database\NIST20.L
 TIC Integration Parameters: LSCINT.P

 Peak Number 7 Benzene, 1,2,3,4-tetramethyl- Concentration Rank 10

R.T.	EstConc	Area	Relative to ISTD	R.T.
12.927	153.53 ug/l	4314650	1,4-Dichlorobenzene-d4	12.024

Hit#	of	5	Tentative ID	MW	MolForm	CAS#	Qual
1			Benzene, 1,2,3,4-tetramethyl-	134	C10H14	000488-23-3	97
2			Benzene, 1,2,3,5-tetramethyl-	134	C10H14	000527-53-7	97
3			Benzene, 1,2,4,5-tetramethyl-	134	C10H14	000095-93-2	96
4			Benzene, 1-ethyl-3,5-dimethyl-	134	C10H14	000934-74-7	94
5			1,3-Cyclopentadiene, 1,2,3,4-tet...	134	C10H14	076089-59-3	93



Data Path : Z:\voasrv\HPCHEM1\MSVOA_X\Data\VX100422\
 Data File : VX031872.D
 Acq On : 04 Oct 2022 16:19
 Operator : JC/MD
 Sample : N4762-06
 Misc : 7.08g/5mL/100uL/5.00mL/MSVOA_X/MEOH
 ALS Vial : 12 Sample Multiplier: 1

Instrument :
 MSVOA_X
 ClientSampleId :
 D22017-(6-6.5)

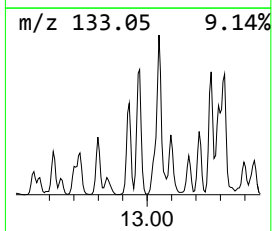
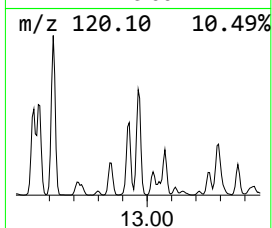
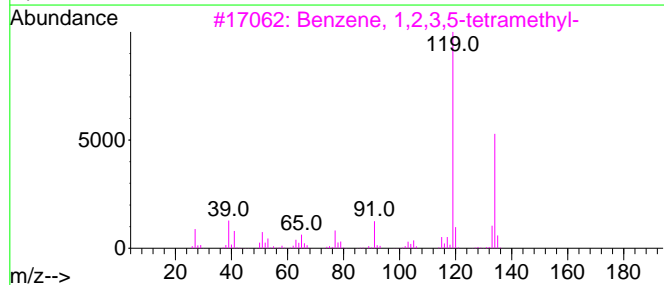
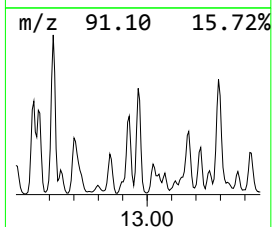
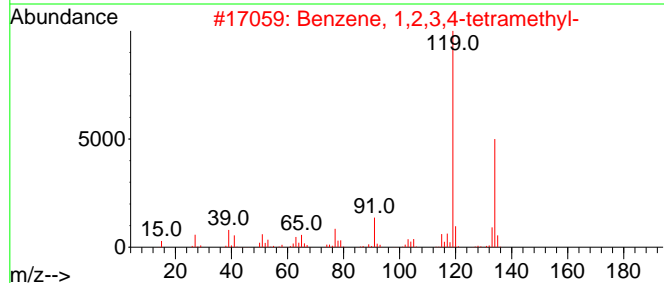
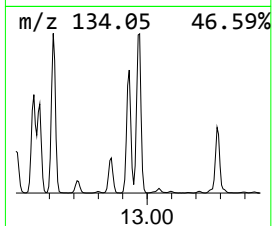
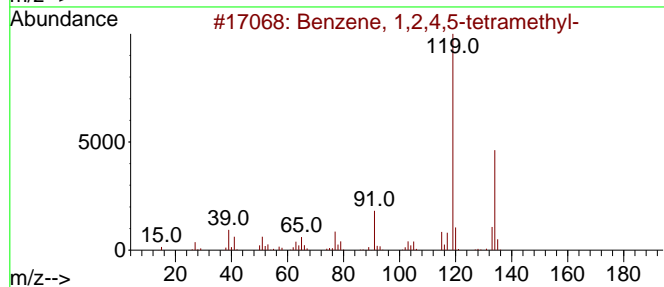
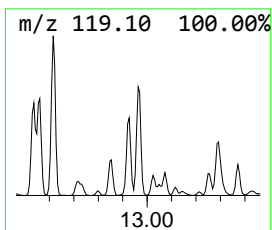
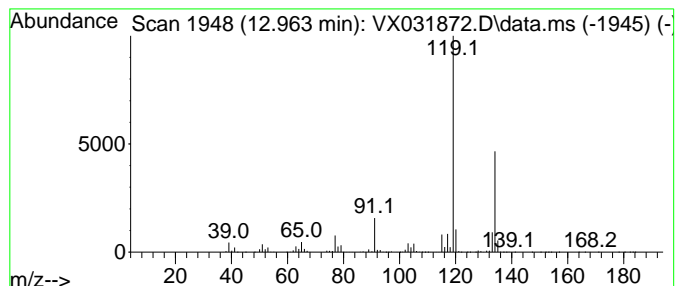
Quant Method : Z:\voasrv\HPCHEM1\MSVOA_X\Method\82X100322W.M
 Quant Title : SW846 8260

TIC Library : C:\Database\NIST20.L
 TIC Integration Parameters: LSCINT.P

 Peak Number 8 Benzene, 1,2,4,5-tetramethyl- Concentration Rank 7

R.T.	EstConc	Area	Relative to ISTD	R.T.
12.963	185.38 ug/l	5209710	1,4-Dichlorobenzene-d4	12.024

Hit#	of 5	Tentative ID	MW	MolForm	CAS#	Qual
1		Benzene, 1,2,4,5-tetramethyl-	134	C10H14	000095-93-2	97
2		Benzene, 1,2,3,4-tetramethyl-	134	C10H14	000488-23-3	95
3		Benzene, 1,2,3,5-tetramethyl-	134	C10H14	000527-53-7	95
4		Benzene, 1-ethyl-2,4-dimethyl-	134	C10H14	000874-41-9	94
5		Benzene, 1-ethyl-2,3-dimethyl-	134	C10H14	000933-98-2	93



Data Path : Z:\voasrv\HPCHEM1\MSVOA_X\Data\VX100422\
 Data File : VX031872.D
 Acq On : 04 Oct 2022 16:19
 Operator : JC/MD
 Sample : N4762-06
 Misc : 7.08g/5mL/100uL/5.00mL/MSVOA_X/MEOH
 ALS Vial : 12 Sample Multiplier: 1

Instrument :
 MSVOA_X
 ClientSampleId :
 D22017-(6-6.5)

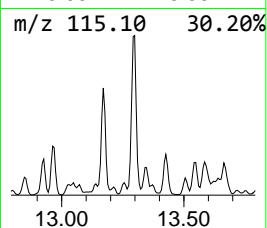
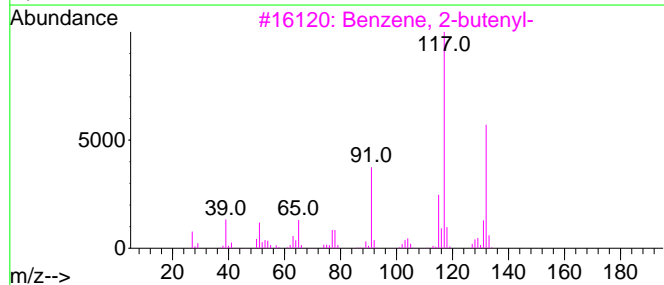
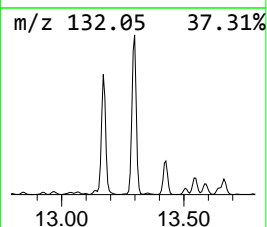
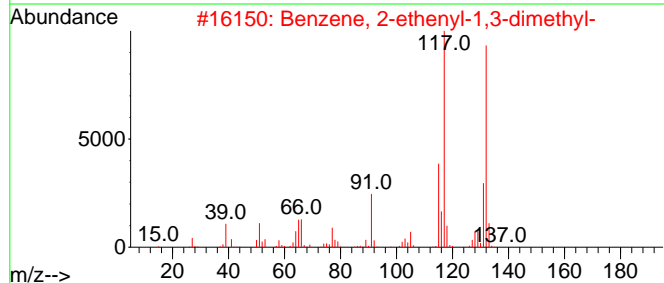
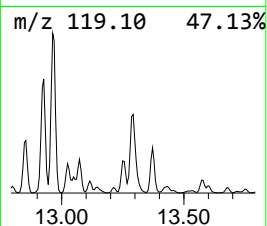
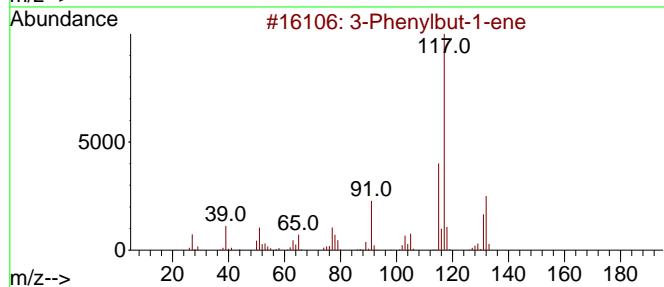
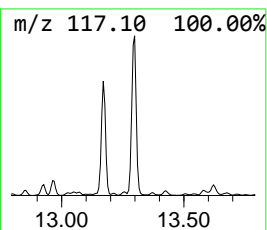
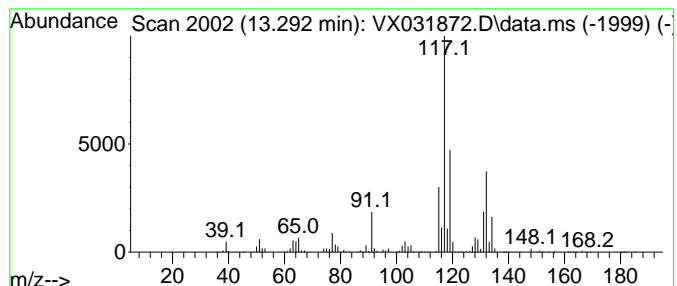
Quant Method : Z:\voasrv\HPCHEM1\MSVOA_X\Method\82X100322W.M
 Quant Title : SW846 8260

TIC Library : C:\Database\NIST20.L
 TIC Integration Parameters: LSCINT.P

 Peak Number 9 3-Phenylbut-1-ene Concentration Rank 5

R.T.	EstConc	Area	Relative to ISTD	R.T.
13.292	249.87 ug/l	7022110	1,4-Dichlorobenzene-d4	12.024

Hit#	of	Tentative ID	MW	MolForm	CAS#	Qual
1	5	3-Phenylbut-1-ene	132	C10H12	000934-10-1	76
2		Benzene, 2-ethenyl-1,3-dimethyl-	132	C10H12	002039-90-9	76
3		Benzene, 2-butenyl-	132	C10H12	001560-06-1	76
4		1-Phenyl-1-butene	132	C10H12	000824-90-8	76
5		Benzene, 1-ethenyl-4-ethyl-	132	C10H12	003454-07-7	70



Data Path : Z:\voasrv\HPCHEM1\MSVOA_X\Data\VX100422\
 Data File : VX031872.D
 Acq On : 04 Oct 2022 16:19
 Operator : JC/MD
 Sample : N4762-06
 Misc : 7.08g/5mL/100uL/5.00mL/MSVOA_X/MEOH
 ALS Vial : 12 Sample Multiplier: 1

Instrument :
 MSVOA_X
 ClientSampleId :
 D22017-(6-6.5)

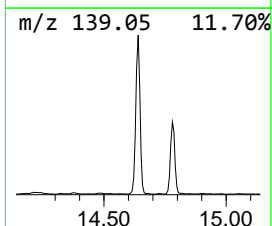
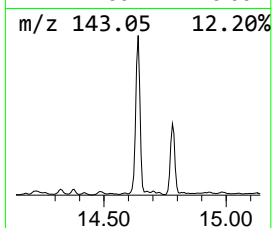
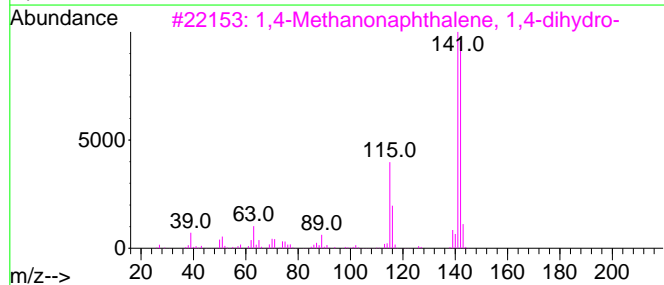
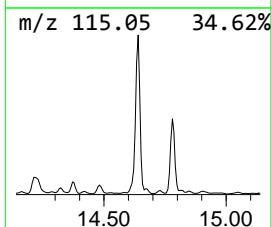
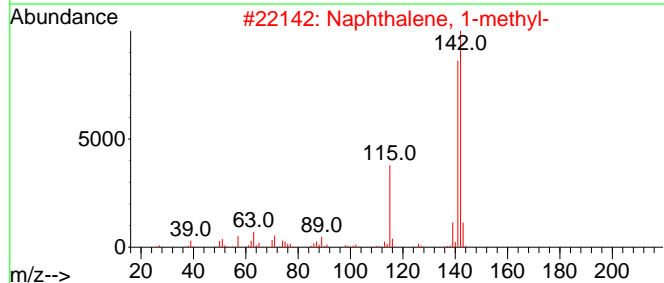
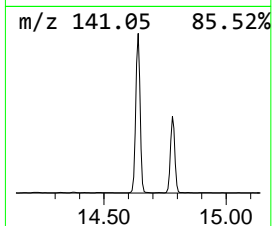
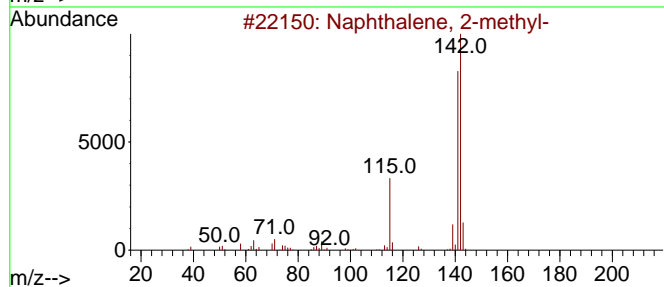
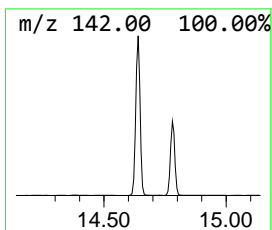
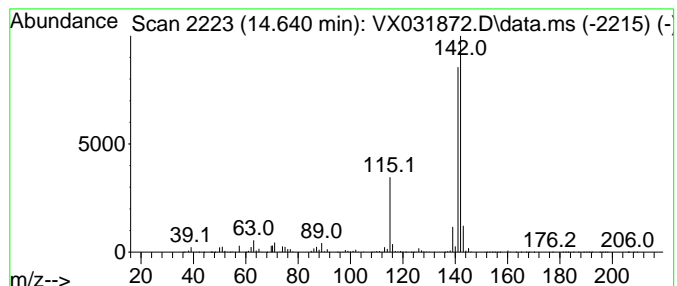
Quant Method : Z:\voasrv\HPCHEM1\MSVOA_X\Method\82X100322W.M
 Quant Title : SW846 8260

TIC Library : C:\Database\NIST20.L
 TIC Integration Parameters: LSCINT.P

 Peak Number 10 Naphthalene, 1-methyl- Concentration Rank 2

R.T.	EstConc	Area	Relative to ISTD	R.T.
14.640	312.69 ug/l	8787700	1,4-Dichlorobenzene-d4	12.024

Hit#	of 5	Tentative ID	MW	MolForm	CAS#	Qual
1		Naphthalene, 2-methyl-	142	C11H10	000091-57-6	96
2		Naphthalene, 1-methyl-	142	C11H10	000090-12-0	96
3		1,4-Methanonaphthalene, 1,4-dihy...	142	C11H10	004453-90-1	91
4		Benzocycloheptatriene	142	C11H10	000264-09-5	91
5		1H-Indene, 1-ethylidene-	142	C11H10	002471-83-2	64



Data Path : Z:\voasrv\HPCHEM1\MSVOA_X\Data\VX100422\
Data File : VX031872.D
Acq On : 04 Oct 2022 16:19
Operator : JC/MD
Sample : N4762-06
Misc : 7.08g/5mL/100uL/5.00mL/MSVOA_X/MEOH
ALS Vial : 12 Sample Multiplier: 1

Instrument :
MSVOA_X
ClientSampleId :
D22017-(6-6.5)

Quant Method : Z:\voasrv\HPCHEM1\MSVOA_X\Method\82X100322W.M
Quant Title : SW846 8260

TIC Library : C:\Database\NIST0.L
TIC Integration Parameters: LSCINT.P

TIC Top Hit name	RT	EstConc	Units	Response	--Internal Standard--			
					#	RT	Resp	Conc
Benzene, 1-ethy...	11.402	442.5	ug/l	12435400	4	12.024	1405160	50.0
Benzene, 1-ethy...	11.616	181.5	ug/l	5100910	4	12.024	1405160	50.0
Benzene, 1,2,4-...	12.091	306.6	ug/l	8617940	4	12.024	1405160	50.0
Benzene, cyclop...	12.250	285.0	ug/l	8009660	4	12.024	1405160	50.0
Benzene, 2-ethy...	12.536	164.2	ug/l	4615610	4	12.024	1405160	50.0
Benzene, 1-ethy...	12.616	223.4	ug/l	6279430	4	12.024	1405160	50.0
Benzene, 1,2,3,...	12.927	153.5	ug/l	4314650	4	12.024	1405160	50.0
Benzene, 1,2,4,...	12.963	185.4	ug/l	5209710	4	12.024	1405160	50.0
3-Phenylbut-1-ene	13.292	249.9	ug/l	7022110	4	12.024	1405160	50.0
Naphthalene, 1-...	14.640	312.7	ug/l	8787700	4	12.024	1405160	50.0