

Data Path : Z:\voasrv\HPCHEM1\MSVOA_X\Data\VX100423\
 Data File : VX038067.D
 Acq On : 04 Oct 2023 15:58
 Operator : JC/MD
 Sample : 04656-20
 Misc : 5.0mL/MSVOA_X/WATER
 ALS Vial : 17 Sample Multiplier: 1

Instrument :
 MSVOA_X
 ClientSampleId :
 MW-101D

Integration Parameters: RTEINT.P

Integrator: RTE
 Smoothing : ON Filtering: 5
 Sampling : 1 Min Area: 3 % of largest Peak
 Start Thrs: 0.2 Max Peaks: 100
 Stop Thrs : 0 Peak Location: TOP

If leading or trailing edge < 100 prefer < Baseline drop else tangent >
 Peak separation: 5

Method : Z:\voasrv\HPCHEM1\MSVOA_X\Method\82X100323W.M
 Title : SW846 8260

Signal : TIC: VX038067.D\data.ms

peak #	R.T. min	first scan	max scan	last scan	PK TY	peak height	corr. area	corr. % max.	% of total
1	1.252	23	27	34	rBV	10124	24053	4.00%	0.718%
2	1.538	69	74	80	rBV	5649	8695	1.45%	0.259%
3	2.050	154	158	166	rVB	4194	6610	1.10%	0.197%
4	2.538	232	238	250	rVB2	6541	14170	2.36%	0.423%
5	5.391	695	706	721	rBV	67566	194436	32.34%	5.803%
6	5.550	721	732	746	rBV	108579	307458	51.13%	9.176%
7	5.958	789	799	814	rBV	77709	208498	34.67%	6.222%
8	6.763	922	931	946	rBV	178544	426190	70.88%	12.719%
9	8.647	1234	1240	1258	rBV	362948	601314	100.00%	17.946%
10	10.055	1465	1471	1485	rBV	405767	550653	91.57%	16.434%
11	11.079	1634	1639	1654	rBV	336293	430686	71.62%	12.853%
12	12.024	1788	1794	1803	rBV	438164	578003	96.12%	17.250%

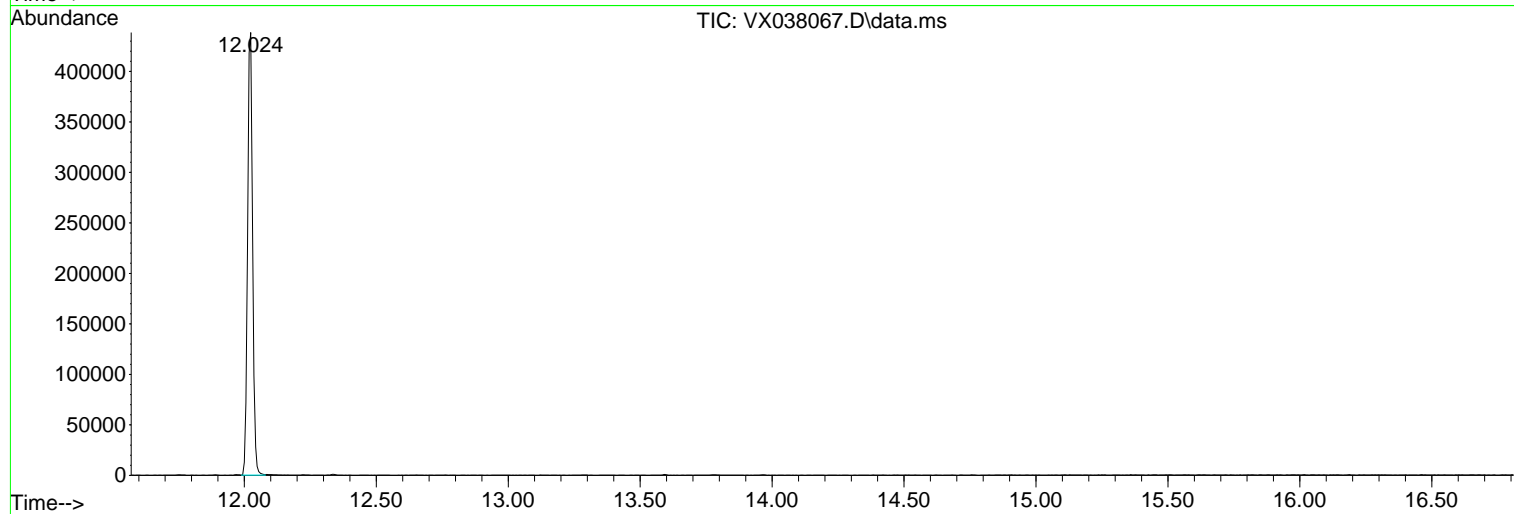
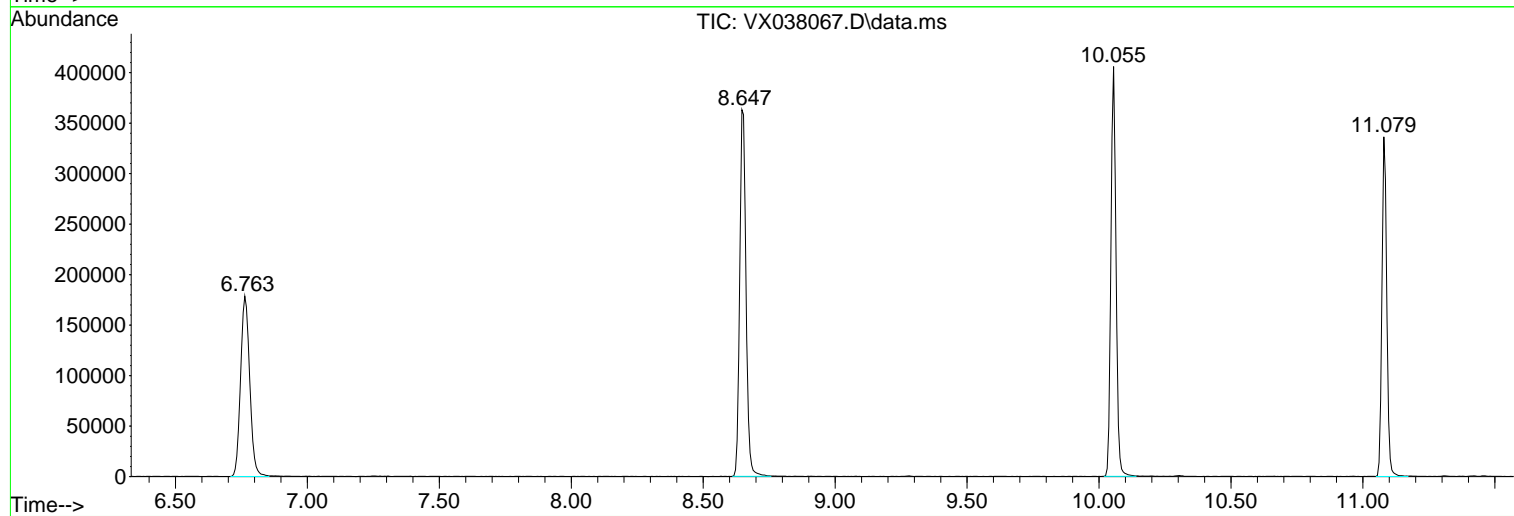
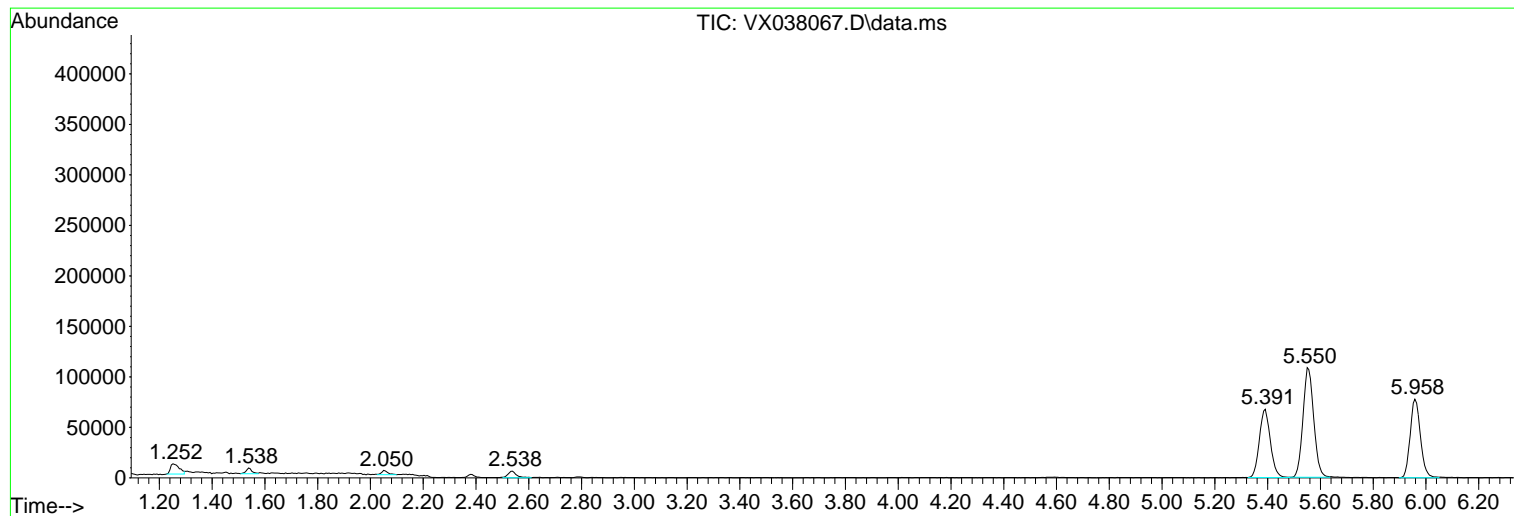
Sum of corrected areas: 3350766

Data Path : Z:\voasrv\HPCHEM1\MSVOA_X\Data\VX100423\
Data File : VX038067.D
Acq On : 04 Oct 2023 15:58
Operator : JC/MD
Sample : 04656-20
Misc : 5.0mL/MSVOA_X/WATER
ALS Vial : 17 Sample Multiplier: 1

Instrument :
MSVOA_X
ClientSampleId :
MW-101D

Quant Method : Z:\voasrv\HPCHEM1\MSVOA_X\Method\82X100323W.M
Quant Title : SW846 8260

TIC Library : C:\Database\NIST20.L
TIC Integration Parameters: LSCINT.P



Library Search Compound Report

Data Path : Z:\voasrv\HPCHEM1\MSVOA_X\Data\VX100423\
Data File : VX038067.D
Acq On : 04 Oct 2023 15:58
Operator : JC/MD
Sample : 04656-20
Misc : 5.0mL/MSVOA_X/WATER
ALS Vial : 17 Sample Multiplier: 1

Instrument :
MSVOA_X
ClientSampleId :
MW-101D

Quant Method : Z:\voasrv\HPCHEM1\MSVOA_X\Method\82X100323W.M
Quant Title : SW846 8260

TIC Library : C:\Database\NIST20.L
TIC Integration Parameters: LSCINT.P

No Library Search Compounds Detected

Data Path : Z:\voasrv\HPCHEM1\MSVOA_X\Data\VX100423\
Data File : VX038067.D
Acq On : 04 Oct 2023 15:58
Operator : JC/MD
Sample : 04656-20
Misc : 5.0mL/MSVOA_X/WATER
ALS Vial : 17 Sample Multiplier: 1

Instrument :
MSVOA_X
ClientSampleId :
MW-101D

Quant Method : Z:\voasrv\HPCHEM1\MSVOA_X\Method\82X100323W.M
Quant Title : SW846 8260

TIC Library : C:\Database\NIST20.L
TIC Integration Parameters: LSCINT.P

TIC Top Hit name	RT	EstConc	Units	Response	--Internal Standard--		
					#	RT	Resp Conc
