

Data Path : Z:\voasrv\HPCHEM1\MSVOA_X\Data\VX100424\
 Data File : VX043277.D
 Acq On : 04 Oct 2024 10:37
 Operator : JC/MD
 Sample : P4263-05DL 10X
 Misc : 5.0mL/MSVOA_X/WATER
 ALS Vial : 7 Sample Multiplier: 1

Instrument :
 MSVOA_X
 ClientSampleId :
 RE114D1-20240930DL

Quant Time: Oct 04 23:26:27 2024
 Quant Method : Z:\voasrv\HPCHEM1\MSVOA_X\Method\82X100124W.M
 Quant Title : SW846 8260
 QLast Update : Wed Oct 02 16:50:57 2024
 Response via : Initial Calibration

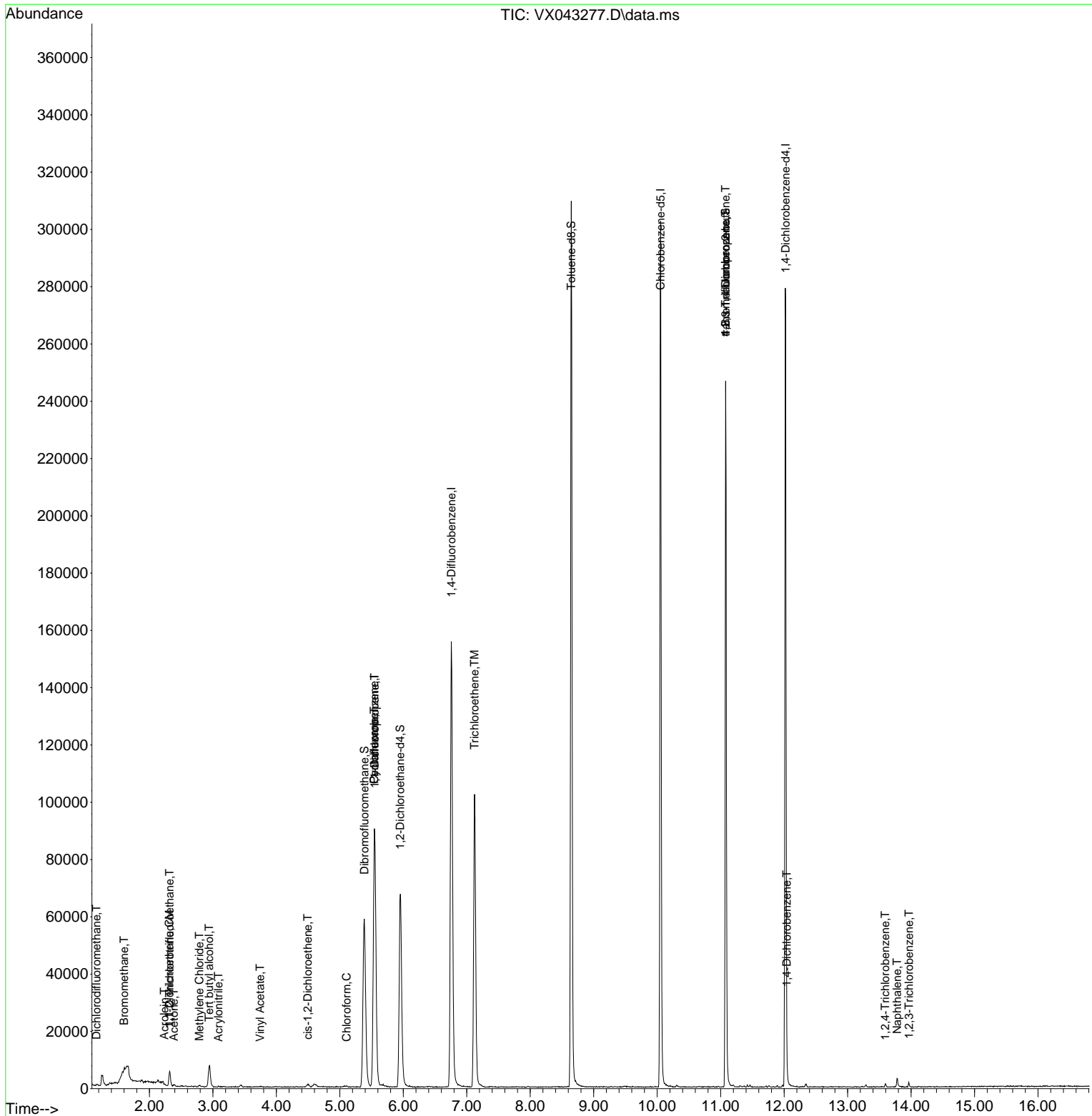
Compound	R.T.	QIon	Response	Conc	Units	Dev(Min)
Internal Standards						
1) Pentafluorobenzene	5.544	168	82634	50.000	ug/l	0.00
34) 1,4-Difluorobenzene	6.757	114	157373	50.000	ug/l	0.00
63) Chlorobenzene-d5	10.055	117	133784	50.000	ug/l	0.00
72) 1,4-Dichlorobenzene-d4	12.024	152	56824	50.000	ug/l	0.00
System Monitoring Compounds						
33) 1,2-Dichloroethane-d4	5.952	65	70420	52.181	ug/l	0.00
Spiked Amount	50.000	Range 74 - 125	Recovery	=	104.360%	
35) Dibromofluoromethane	5.385	113	52018	47.929	ug/l	0.00
Spiked Amount	50.000	Range 75 - 124	Recovery	=	95.860%	
50) Toluene-d8	8.647	98	184787	49.131	ug/l	0.00
Spiked Amount	50.000	Range 86 - 113	Recovery	=	98.260%	
62) 4-Bromofluorobenzene	11.079	95	65619	48.024	ug/l	0.00
Spiked Amount	50.000	Range 77 - 121	Recovery	=	96.040%	
Target Compounds						
						Qvalue
2) Dichlorodifluoromethane	1.166	85	219	0.228	ug/l	83
5) Bromomethane	1.599	94	207	0.511	ug/l	82
9) 1,1,2-Trichlorotrifluo...	2.319	101	1760	1.904	ug/l	96
11) Tert butyl alcohol	2.940	59	4401	17.137	ug/l #	71
12) 1,1-Dichloroethene	2.312	96	312	0.340	ug/l #	72
13) Acrolein	2.233	56	177	0.730	ug/l #	69
15) Acrylonitrile	3.087	53	105	0.200	ug/l #	27
16) Acetone	2.386	43	646	1.146	ug/l #	47
20) Methylene Chloride	2.788	84	340	0.327	ug/l #	80
23) Vinyl Acetate	3.745	43	132	6.378	ug/l #	71
27) cis-1,2-Dichloroethene	4.495	96	709	0.622	ug/l	83
30) Chloroform	5.105	83	467	0.241	ug/l	96
31) Cyclohexane	5.544	56	2042	1.402	ug/l #	8
36) 1,1-Dichloropropene	5.550	75	7044	5.138	ug/l #	49
44) Trichloroethene	7.123	130	39817	36.112	ug/l	95
76) 1,2,3-Trichloropropane	11.079	75	36031	28.587	ug/l #	34
81) trans-1,4-Dichloro-2-b...	11.079	75	36031	74.086	ug/l #	8
88) 1,4-Dichlorobenzene	12.042	146	481	0.246	ug/l #	1
93) 1,2,4-Trichlorobenzene	13.591	180	420	0.376	ug/l #	90
95) Naphthalene	13.780	128	2927	0.713	ug/l #	96
96) 1,2,3-Trichlorobenzene	13.969	180	450	0.391	ug/l	86

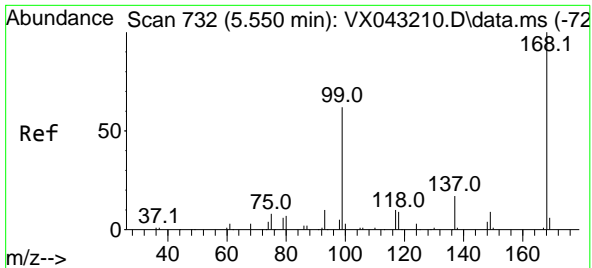
(#) = qualifier out of range (m) = manual integration (+) = signals summed

Data Path : Z:\voasrv\HPCHEM1\MSVOA_X\Data\VX100424\
 Data File : VX043277.D
 Acq On : 04 Oct 2024 10:37
 Operator : JC/MD
 Sample : P4263-05DL 10X
 Misc : 5.0mL/MSVOA_X/WATER
 ALS Vial : 7 Sample Multiplier: 1

Instrument :
 MSVOA_X
 ClientSampleId :
 RE114D1-20240930DL

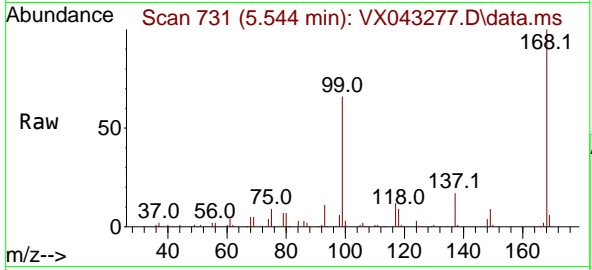
Quant Time: Oct 04 23:26:27 2024
 Quant Method : Z:\voasrv\HPCHEM1\MSVOA_X\Method\82X100124W.M
 Quant Title : SW846 8260
 QLast Update : Wed Oct 02 16:50:57 2024
 Response via : Initial Calibration



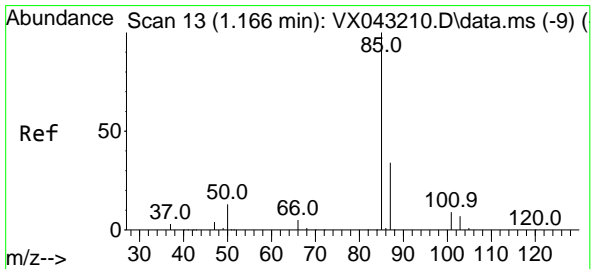
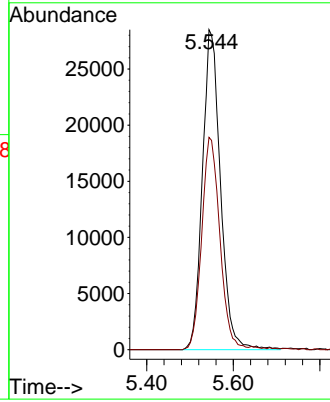
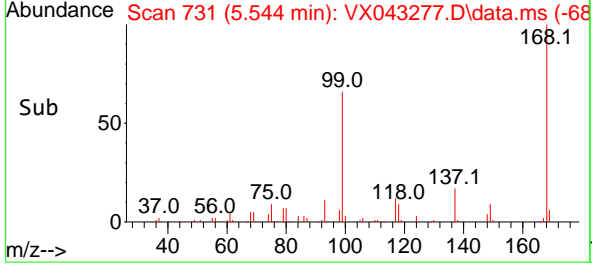


#1
 Pentafluorobenzene
 Concen: 50.000 ug/l
 RT: 5.544 min Scan# 71
 Delta R.T. -0.006 min
 Lab File: VX043277.D
 Acq: 04 Oct 2024 10:37

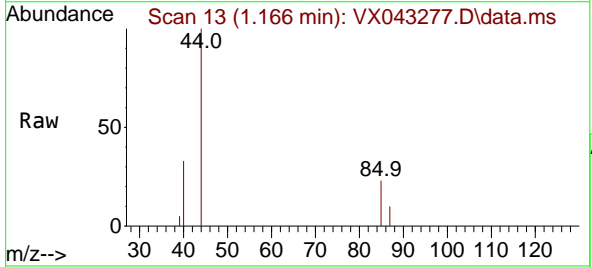
Instrument : MSVOA_X
 ClientSampleId : RE114D1-20240930DL



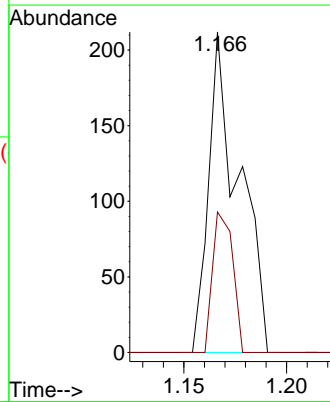
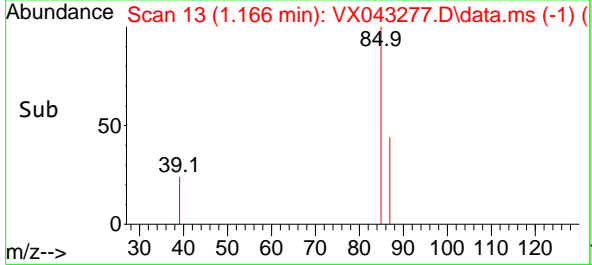
Tgt Ion:168 Resp: 82634
 Ion Ratio Lower Upper
 168 100
 99 66.3 49.7 74.5

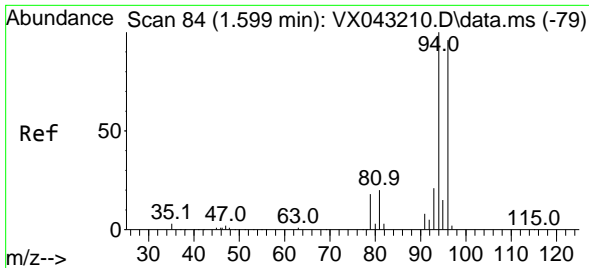


#2
 Dichlorodifluoromethane
 Concen: 0.228 ug/l
 RT: 1.166 min Scan# 13
 Delta R.T. -0.000 min
 Lab File: VX043277.D
 Acq: 04 Oct 2024 10:37



Tgt Ion: 85 Resp: 219
 Ion Ratio Lower Upper
 85 100
 87 43.9 17.1 51.2

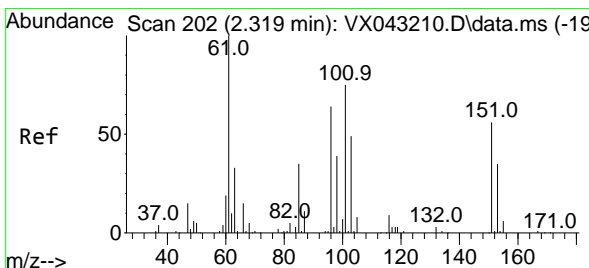
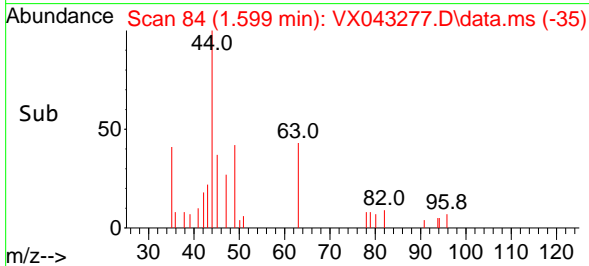
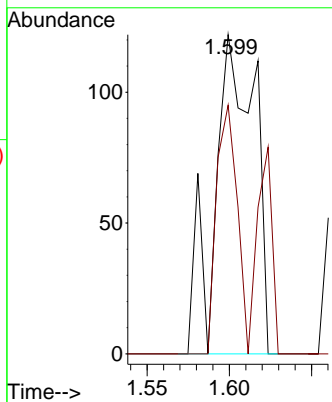
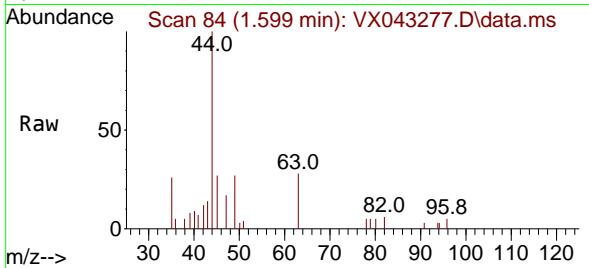




#5
 Bromomethane
 Concen: 0.511 ug/l
 RT: 1.599 min Scan# 84
 Delta R.T. 0.000 min
 Lab File: VX043277.D
 Acq: 04 Oct 2024 10:37

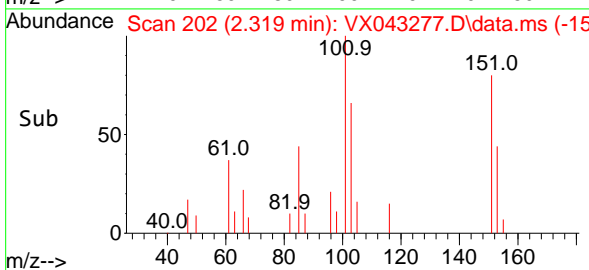
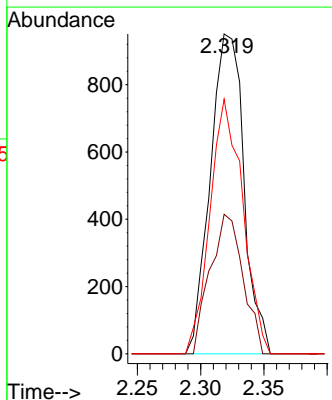
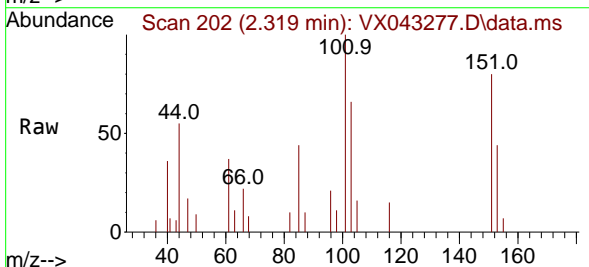
Instrument :
 MSVOA_X
 ClientSampleId :
 RE114D1-20240930DL

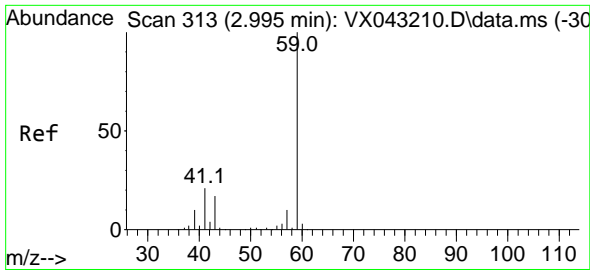
Tgt Ion: 94 Resp: 207
 Ion Ratio Lower Upper
 94 100
 96 77.9 76.6 115.0



#9
 1,1,2-Trichlorotrifluoroethane
 Concen: 1.904 ug/l
 RT: 2.319 min Scan# 202
 Delta R.T. -0.000 min
 Lab File: VX043277.D
 Acq: 04 Oct 2024 10:37

Tgt Ion: 101 Resp: 1760
 Ion Ratio Lower Upper
 101 100
 85 42.6 37.0 55.6
 151 77.5 60.0 90.0

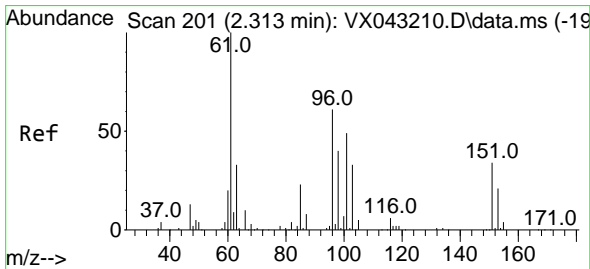
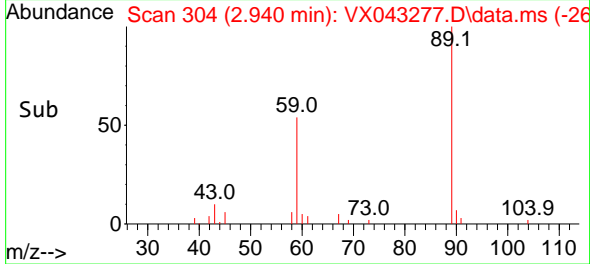
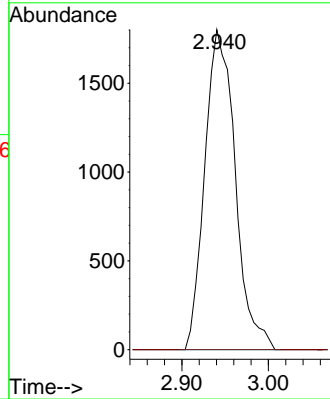
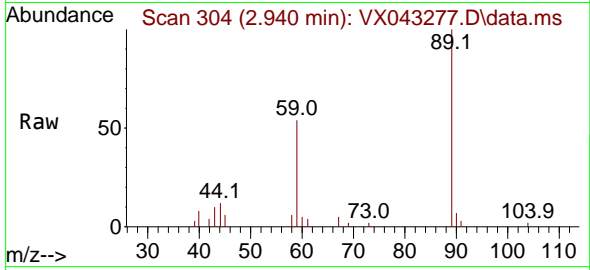




#11
 Tert butyl alcohol
 Concen: 17.137 ug/l
 RT: 2.940 min Scan# 304
 Delta R.T. -0.055 min
 Lab File: VX043277.D
 Acq: 04 Oct 2024 10:37

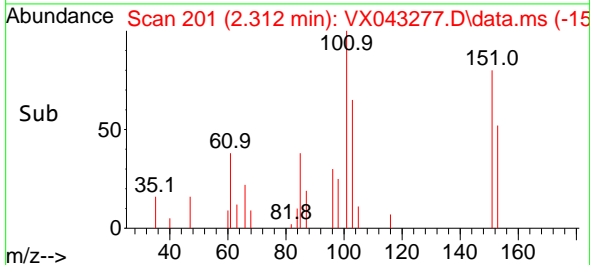
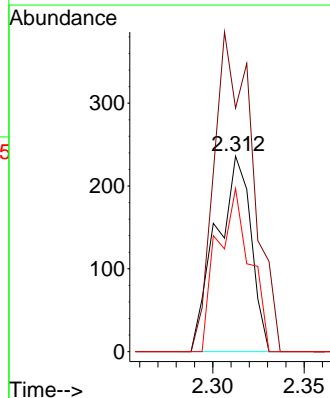
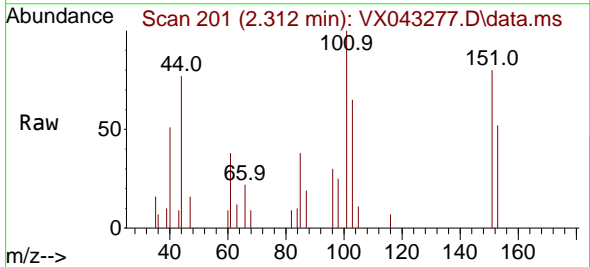
Instrument : MSVOA_X
 ClientSampleId : RE114D1-20240930DL

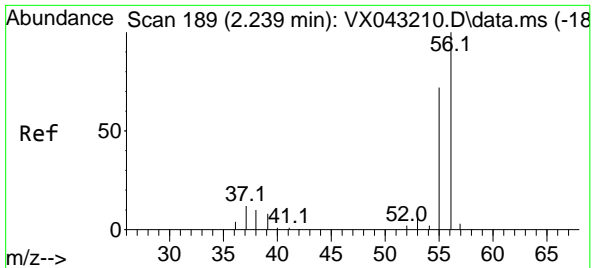
Tgt Ion: 59 Resp: 4401
 Ion Ratio Lower Upper
 59 100
 57 0.0 8.6 13.0#



#12
 1,1-Dichloroethene
 Concen: 0.340 ug/l
 RT: 2.312 min Scan# 201
 Delta R.T. -0.000 min
 Lab File: VX043277.D
 Acq: 04 Oct 2024 10:37

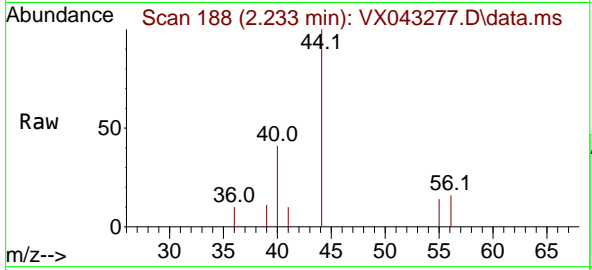
Tgt Ion: 96 Resp: 312
 Ion Ratio Lower Upper
 96 100
 61 124.6 130.6 195.8#
 98 83.5 51.7 77.5#



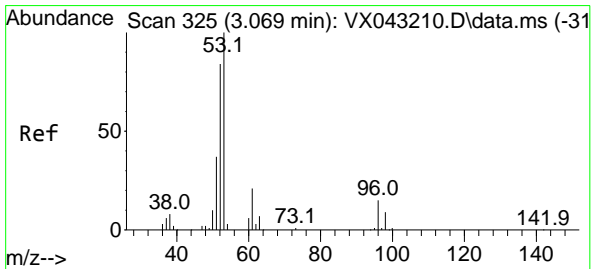
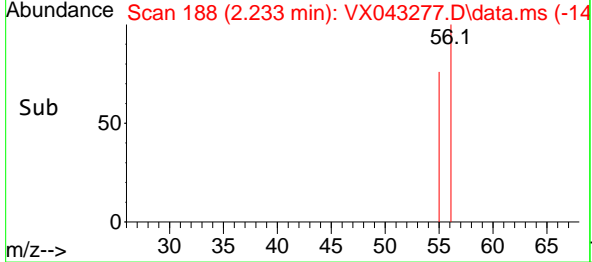
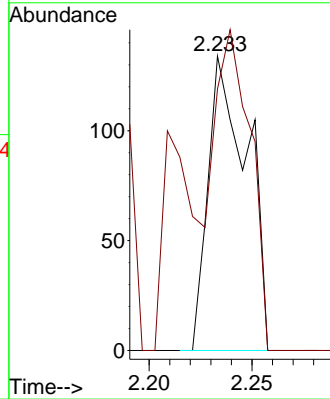


#13
 Acrolein
 Concen: 0.730 ug/l
 RT: 2.233 min Scan# 11
 Delta R.T. -0.006 min
 Lab File: VX043277.D
 Acq: 04 Oct 2024 10:37

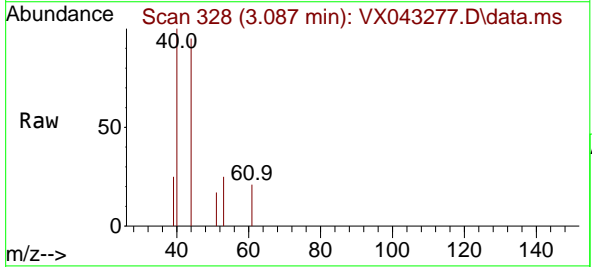
Instrument : MSVOA_X
 ClientSampleId : RE114D1-20240930DL



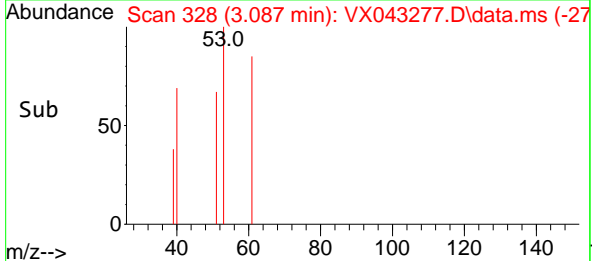
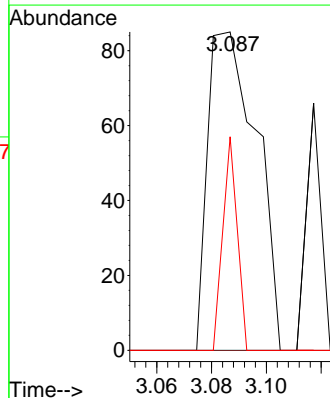
Tgt Ion: 56 Resp: 177
 Ion Ratio Lower Upper
 56 100
 55 97.2 57.4 86.0#

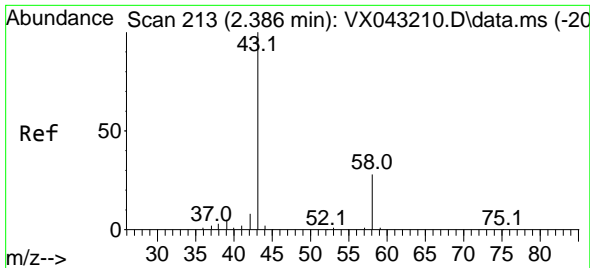


#15
 Acrylonitrile
 Concen: 0.200 ug/l
 RT: 3.087 min Scan# 328
 Delta R.T. 0.018 min
 Lab File: VX043277.D
 Acq: 04 Oct 2024 10:37



Tgt Ion: 53 Resp: 105
 Ion Ratio Lower Upper
 53 100
 52 0.0 67.6 101.4#
 51 20.0 30.3 45.5#



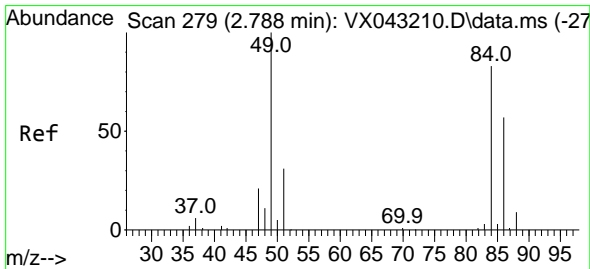
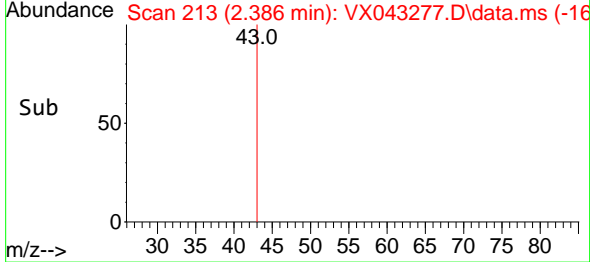
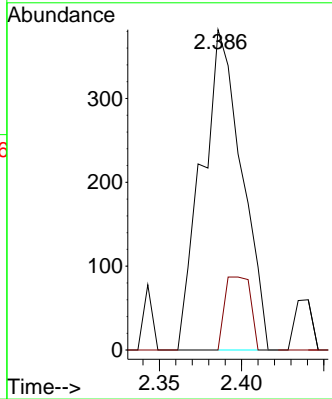
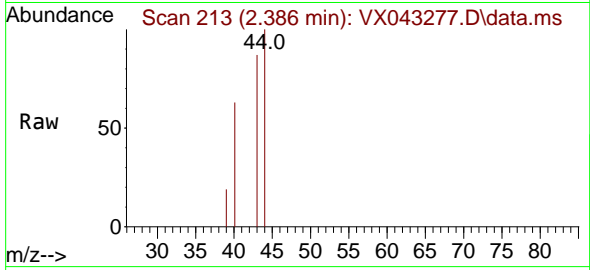


#16
 Acetone
 Concen: 1.146 ug/l
 RT: 2.386 min Scan# 216
 Delta R.T. -0.000 min
 Lab File: VX043277.D
 Acq: 04 Oct 2024 10:37

Instrument : MSVOA_X
 ClientSampleId : RE114D1-20240930DL

Tgt Ion: 43 Resp: 646

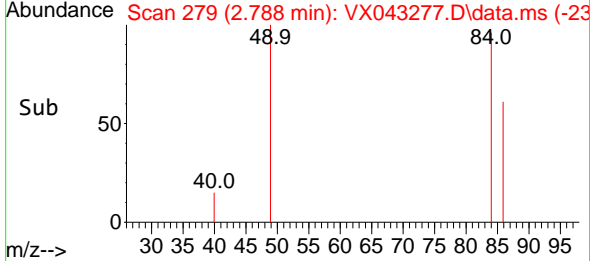
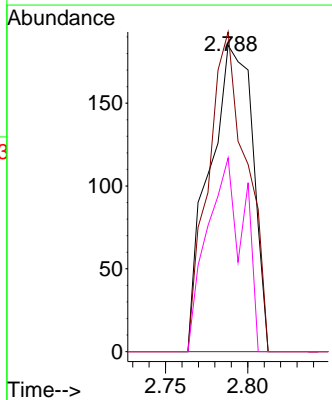
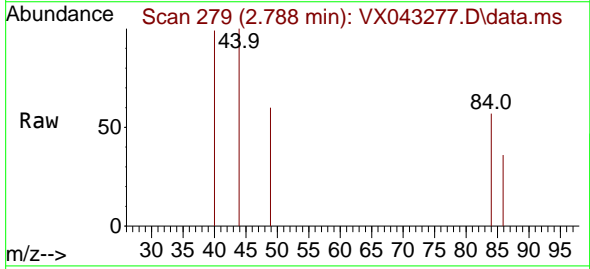
Ion	Ratio	Lower	Upper
43	100		
58	0.0	22.6	33.8#

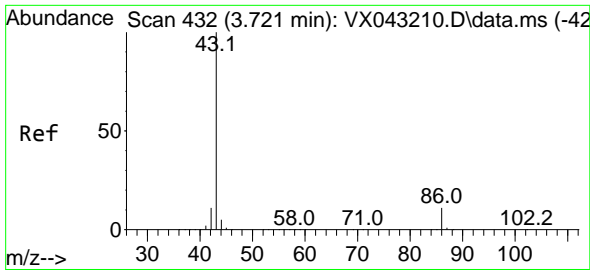


#20
 Methylene Chloride
 Concen: 0.327 ug/l
 RT: 2.788 min Scan# 279
 Delta R.T. -0.000 min
 Lab File: VX043277.D
 Acq: 04 Oct 2024 10:37

Tgt Ion: 84 Resp: 340

Ion	Ratio	Lower	Upper
84	100		
49	104.3	96.7	145.1
51	0.0	30.4	45.6#
86	63.2	54.7	82.1

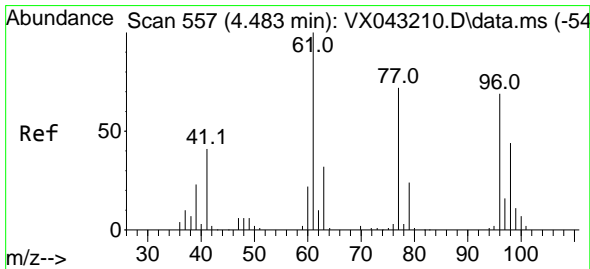
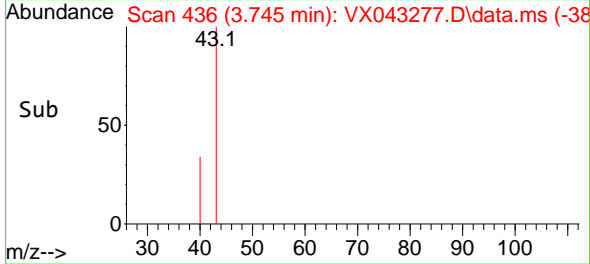
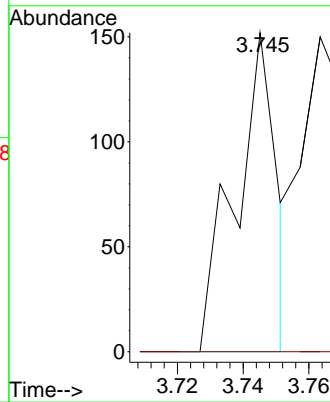
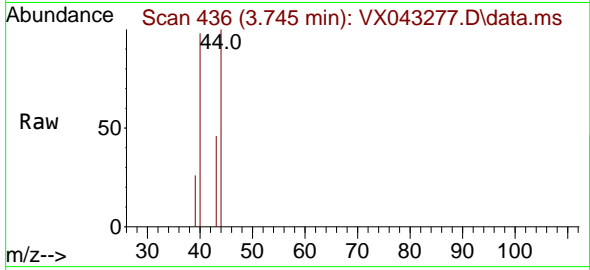




#23
 Vinyl Acetate
 Concen: 6.378 ug/l
 RT: 3.745 min Scan# 41
 Delta R.T. 0.024 min
 Lab File: VX043277.D
 Acq: 04 Oct 2024 10:37

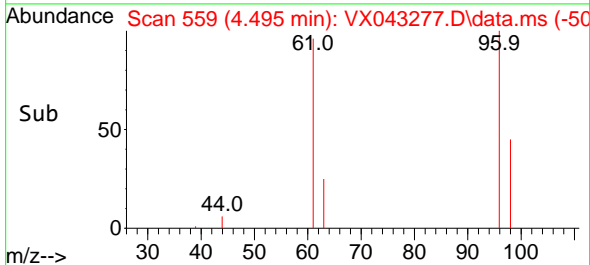
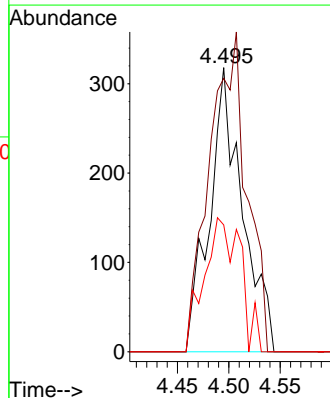
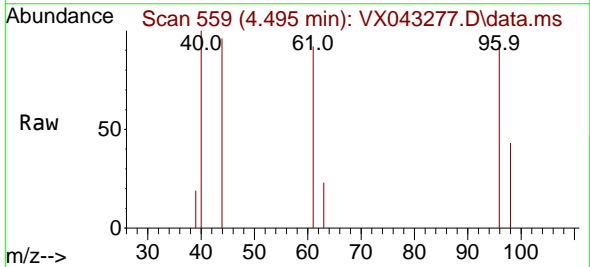
Instrument :
 MSVOA_X
 ClientSampleId :
 RE114D1-20240930DL

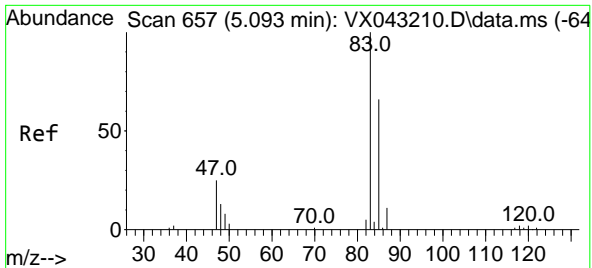
Tgt Ion: 43 Resp: 132
 Ion Ratio Lower Upper
 43 100
 86 0.0 8.8 13.2#



#27
 cis-1,2-Dichloroethene
 Concen: 0.622 ug/l
 RT: 4.495 min Scan# 559
 Delta R.T. 0.012 min
 Lab File: VX043277.D
 Acq: 04 Oct 2024 10:37

Tgt Ion: 96 Resp: 709
 Ion Ratio Lower Upper
 96 100
 61 126.9 0.0 298.2
 98 52.5 0.0 128.6

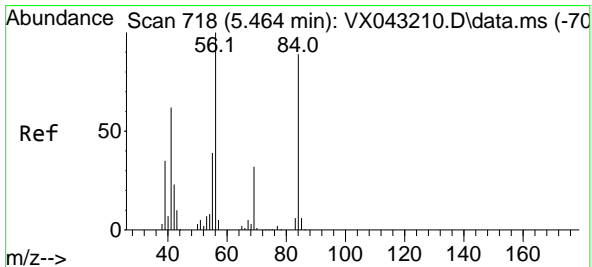
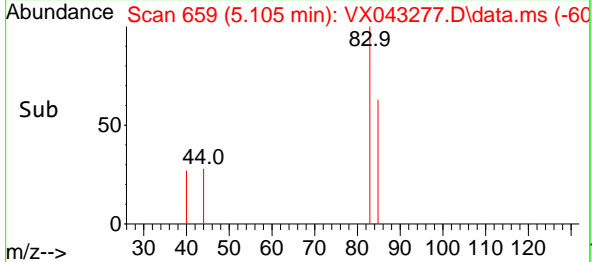
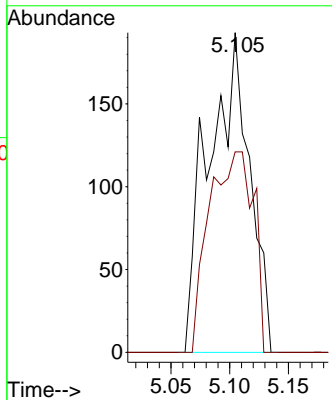
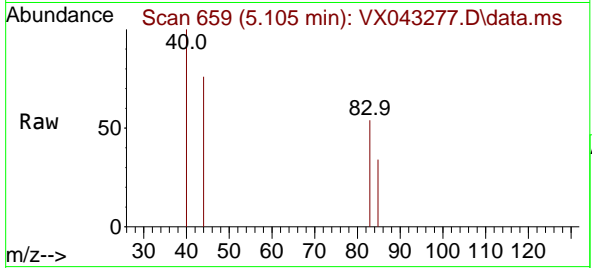




#30
 Chloroform
 Concen: 0.241 ug/l
 RT: 5.105 min Scan# 61
 Delta R.T. 0.012 min
 Lab File: VX043277.D
 Acq: 04 Oct 2024 10:37

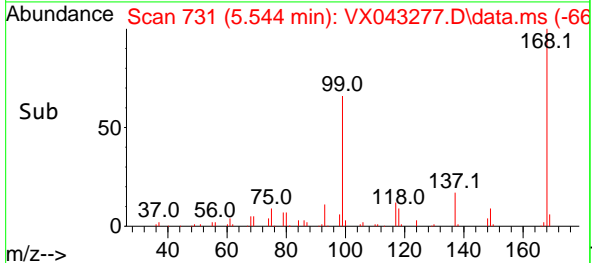
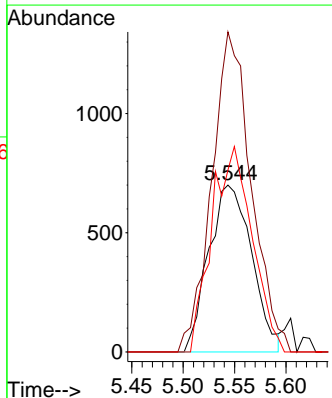
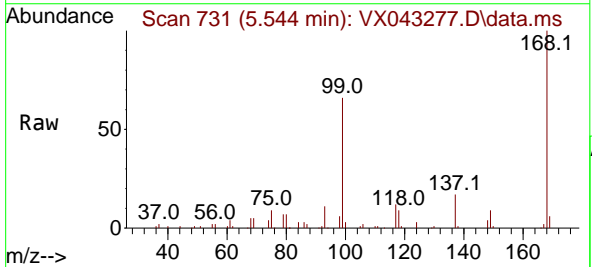
Instrument : MSVOA_X
 ClientSampleId : RE114D1-20240930DL

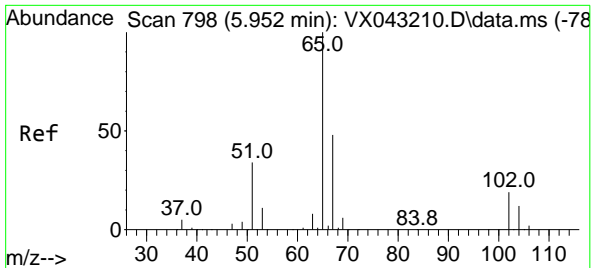
Tgt Ion: 83 Resp: 467
 Ion Ratio Lower Upper
 83 100
 85 62.7 52.5 78.7



#31
 Cyclohexane
 Concen: 1.402 ug/l
 RT: 5.544 min Scan# 731
 Delta R.T. 0.079 min
 Lab File: VX043277.D
 Acq: 04 Oct 2024 10:37

Tgt Ion: 56 Resp: 2042
 Ion Ratio Lower Upper
 56 100
 69 191.7 25.8 38.6#
 84 109.0 71.1 106.7#

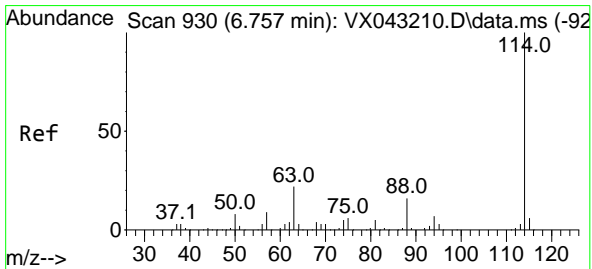
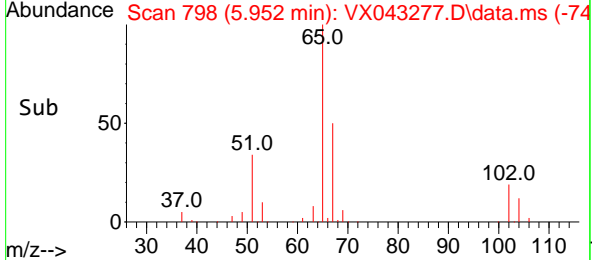
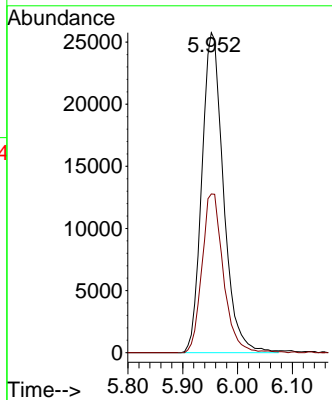
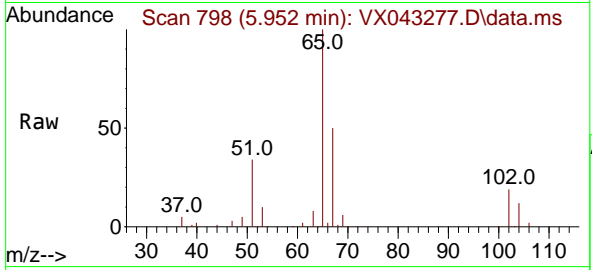




#33
 1,2-Dichloroethane-d4
 Concen: 52.181 ug/l
 RT: 5.952 min Scan# 798
 Delta R.T. -0.000 min
 Lab File: VX043277.D
 Acq: 04 Oct 2024 10:37

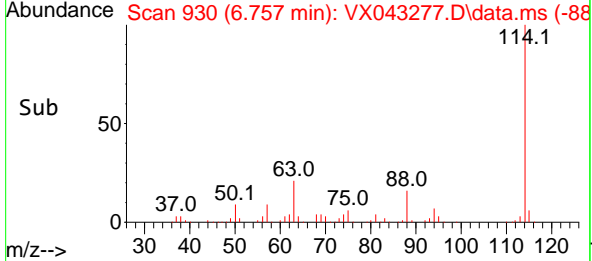
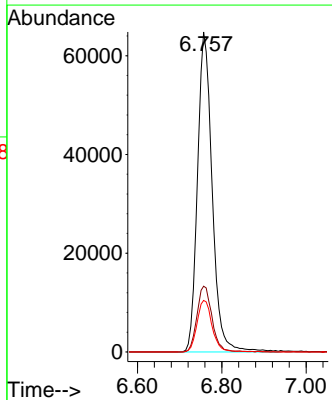
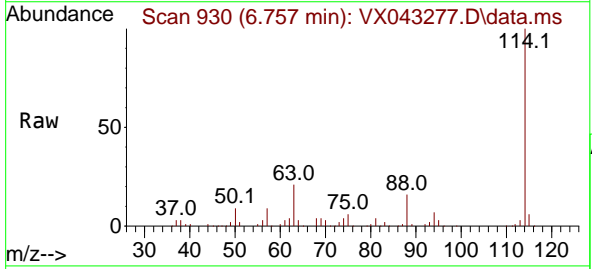
Instrument : MSVOA_X
 ClientSampleId : RE114D1-20240930DL

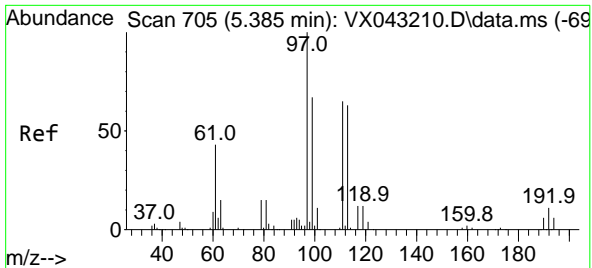
Tgt Ion: 65 Resp: 70420
 Ion Ratio Lower Upper
 65 100
 67 49.3 0.0 99.0



#34
 1,4-Difluorobenzene
 Concen: 50.000 ug/l
 RT: 6.757 min Scan# 930
 Delta R.T. -0.000 min
 Lab File: VX043277.D
 Acq: 04 Oct 2024 10:37

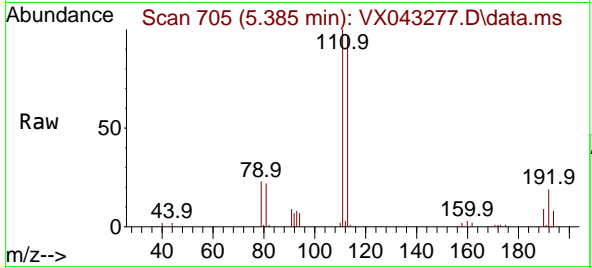
Tgt Ion: 114 Resp: 157373
 Ion Ratio Lower Upper
 114 100
 63 20.5 0.0 43.0
 88 16.1 0.0 33.0





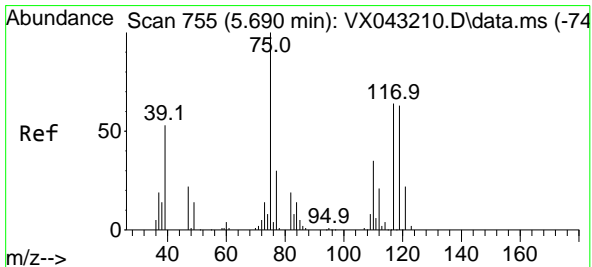
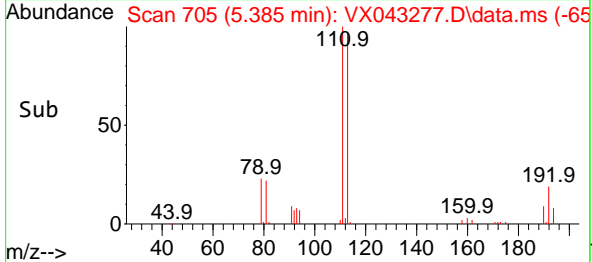
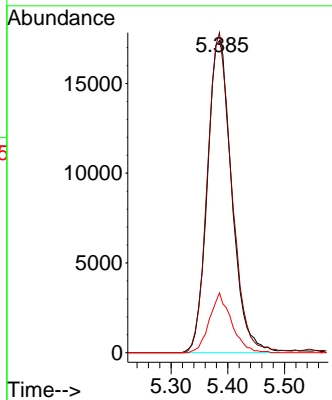
#35
 Dibromofluoromethane
 Concen: 47.929 ug/l
 RT: 5.385 min Scan# 705
 Delta R.T. -0.000 min
 Lab File: VX043277.D
 Acq: 04 Oct 2024 10:37

Instrument : MSVOA_X
 ClientSampleId : RE114D1-20240930DL



Tgt Ion: 113 Resp: 52018

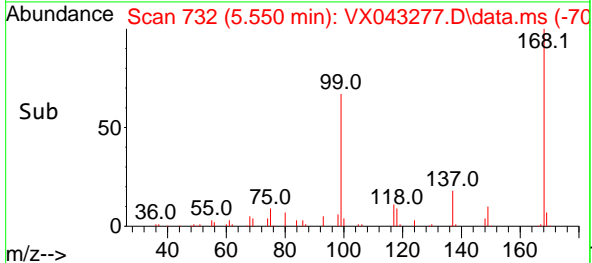
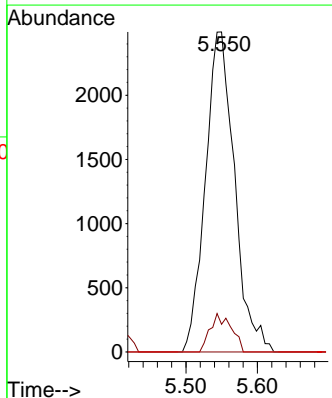
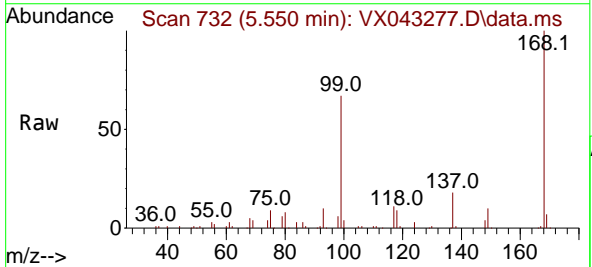
Ion	Ratio	Lower	Upper
113	100		
111	101.8	83.4	125.0
192	17.3	14.1	21.1

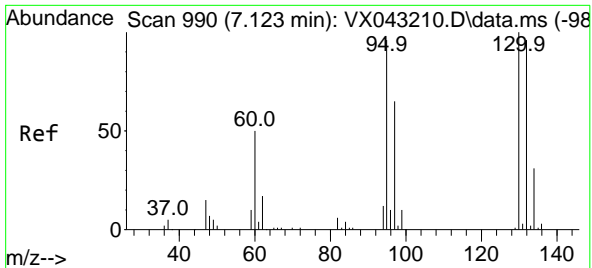


#36
 1,1-Dichloropropene
 Concen: 5.138 ug/l
 RT: 5.550 min Scan# 732
 Delta R.T. -0.140 min
 Lab File: VX043277.D
 Acq: 04 Oct 2024 10:37

Tgt Ion: 75 Resp: 7044

Ion	Ratio	Lower	Upper
75	100		
110	8.7	17.8	53.3#
77	0.0	24.9	37.3#

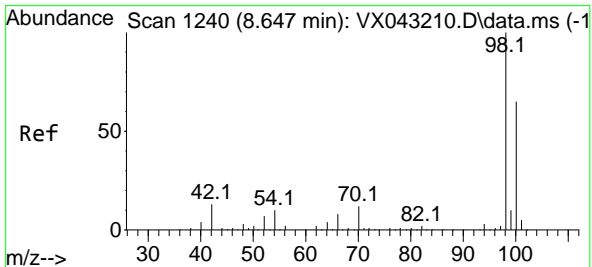
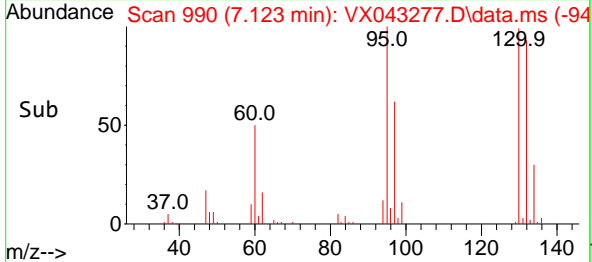
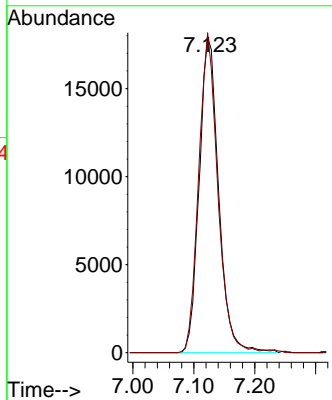
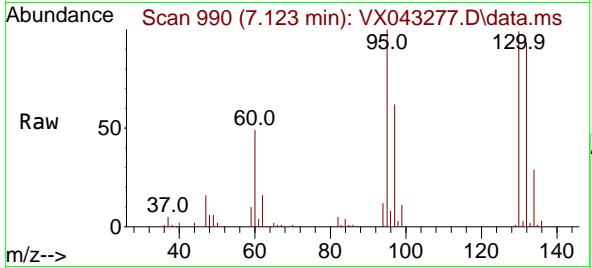




#44
 Trichloroethene
 Concen: 36.112 ug/l
 RT: 7.123 min Scan# 990
 Delta R.T. -0.000 min
 Lab File: VX043277.D
 Acq: 04 Oct 2024 10:37

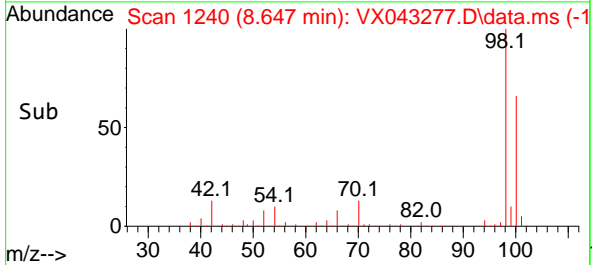
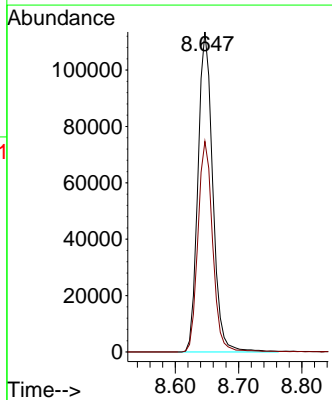
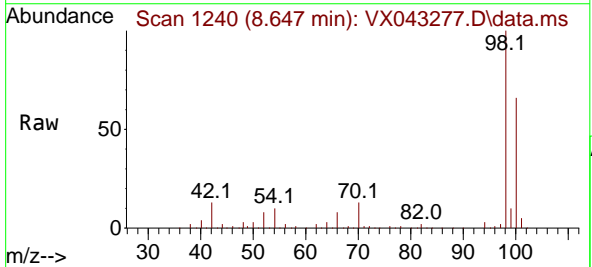
Instrument : MSVOA_X
 ClientSampleId : RE114D1-20240930DL

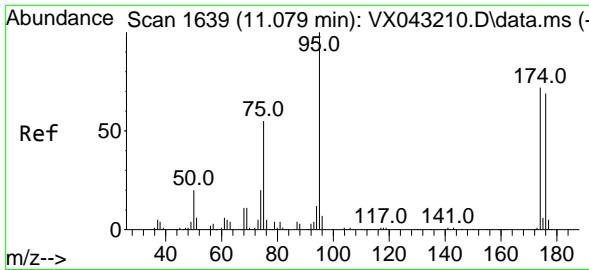
Tgt Ion:130 Resp: 39817
 Ion Ratio Lower Upper
 130 100
 95 101.5 0.0 192.2



#50
 Toluene-d8
 Concen: 49.131 ug/l
 RT: 8.647 min Scan# 1240
 Delta R.T. -0.000 min
 Lab File: VX043277.D
 Acq: 04 Oct 2024 10:37

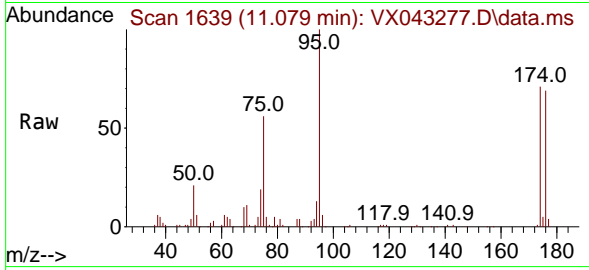
Tgt Ion: 98 Resp: 184787
 Ion Ratio Lower Upper
 98 100
 100 65.7 52.4 78.6



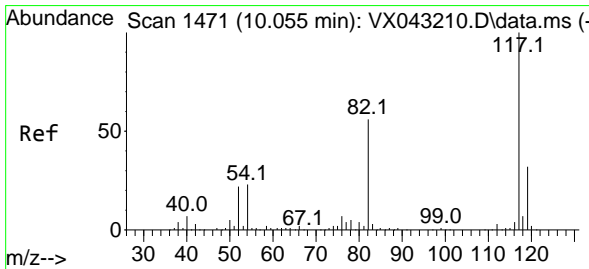
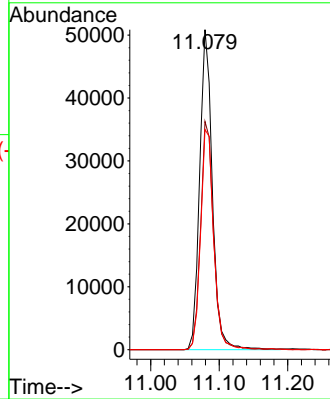
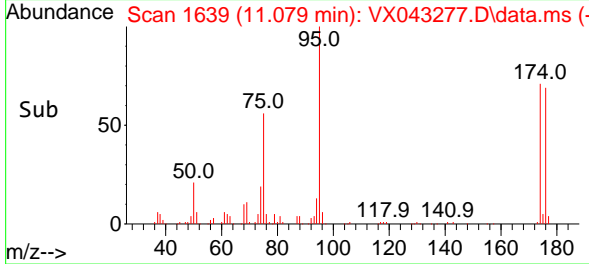


#62
 4-Bromofluorobenzene
 Concen: 48.024 ug/l
 RT: 11.079 min Scan# 1639
 Delta R.T. -0.000 min
 Lab File: VX043277.D
 Acq: 04 Oct 2024 10:37

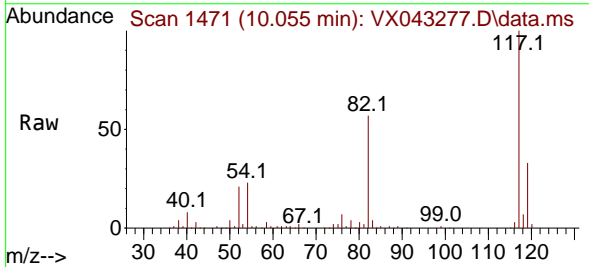
Instrument : MSVOA_X
 ClientSampleId : RE114D1-20240930DL



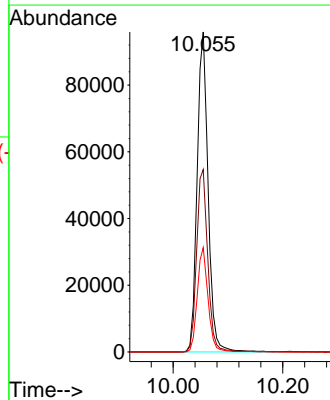
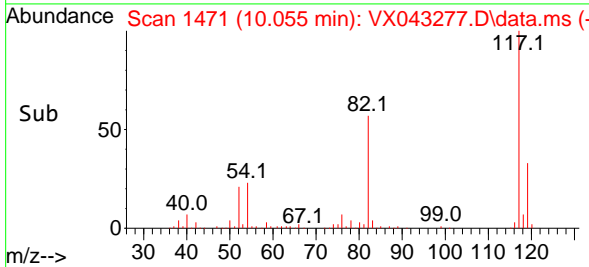
Tgt Ion: 95 Resp: 65619
 Ion Ratio Lower Upper
 95 100
 174 72.7 0.0 145.0
 176 71.3 0.0 143.0

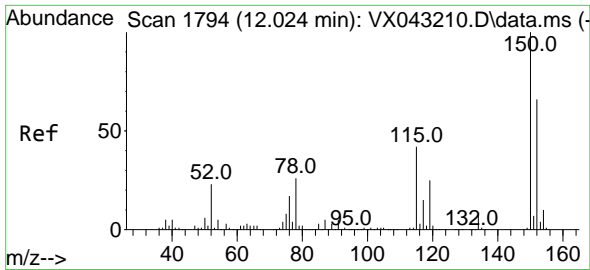


#63
 Chlorobenzene-d5
 Concen: 50.000 ug/l
 RT: 10.055 min Scan# 1471
 Delta R.T. -0.000 min
 Lab File: VX043277.D
 Acq: 04 Oct 2024 10:37



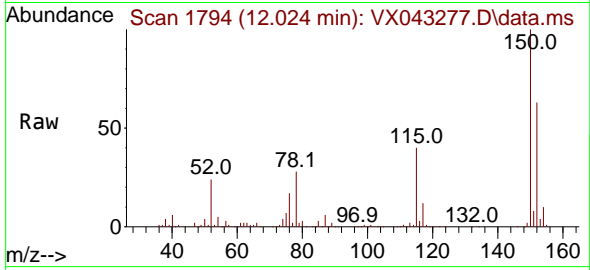
Tgt Ion: 117 Resp: 133784
 Ion Ratio Lower Upper
 117 100
 82 57.0 45.0 67.6
 119 32.6 25.3 37.9



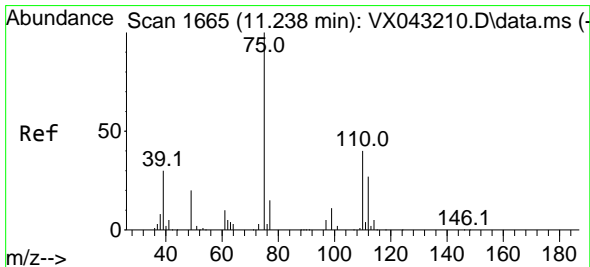
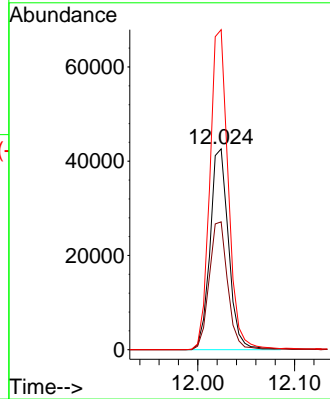
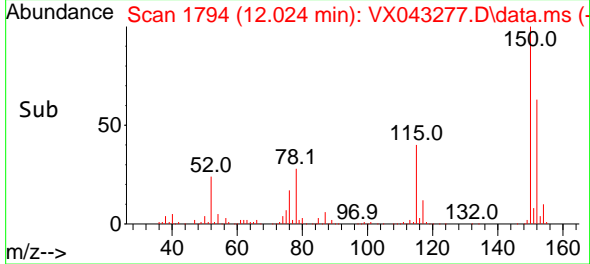


#72
 1,4-Dichlorobenzene-d4
 Concen: 50.000 ug/l
 RT: 12.024 min Scan# 11
 Delta R.T. -0.000 min
 Lab File: VX043277.D
 Acq: 04 Oct 2024 10:37

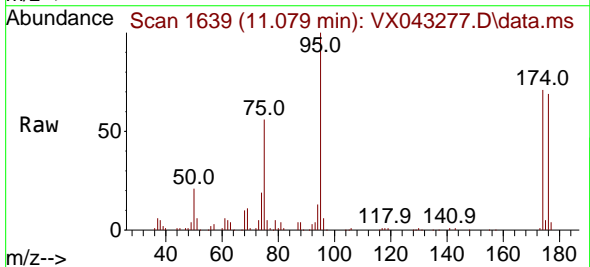
Instrument : MSVOA_X
 ClientSampleId : RE114D1-20240930DL



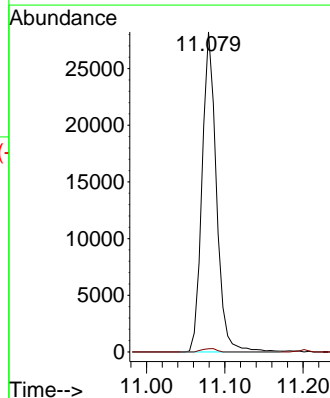
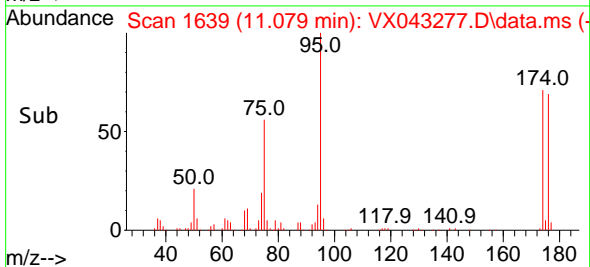
Tgt Ion:152 Resp: 56824
 Ion Ratio Lower Upper
 152 100
 115 64.0 44.1 132.3
 150 159.5 0.0 347.4

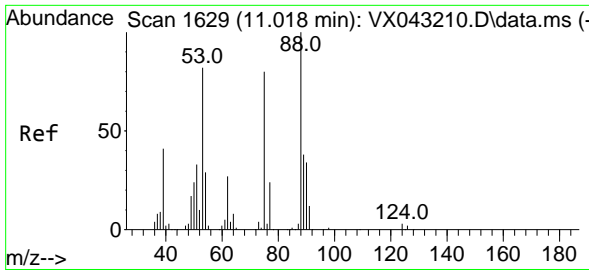


#76
 1,2,3-Trichloropropane
 Concen: 28.587 ug/l
 RT: 11.079 min Scan# 1639
 Delta R.T. -0.159 min
 Lab File: VX043277.D
 Acq: 04 Oct 2024 10:37



Tgt Ion: 75 Resp: 36031
 Ion Ratio Lower Upper
 75 100
 77 1.1 22.0 66.0#



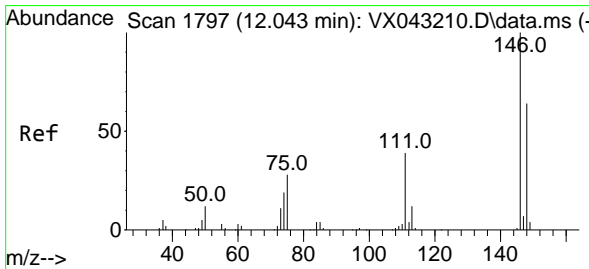
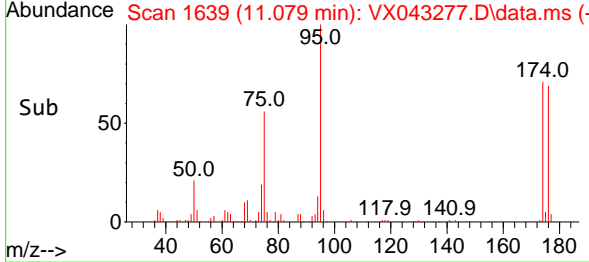
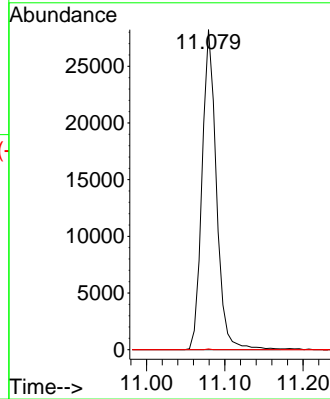
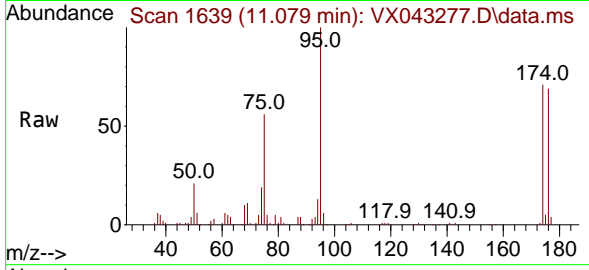


#81
 trans-1,4-Dichloro-2-butene
 Concen: 74.086 ug/l
 RT: 11.079 min Scan# 1639
 Delta R.T. 0.061 min
 Lab File: VX043277.D
 Acq: 04 Oct 2024 10:37

Instrument : MSVOA_X
 ClientSampleId : RE114D1-20240930DL

Tgt Ion: 75 Resp: 36031

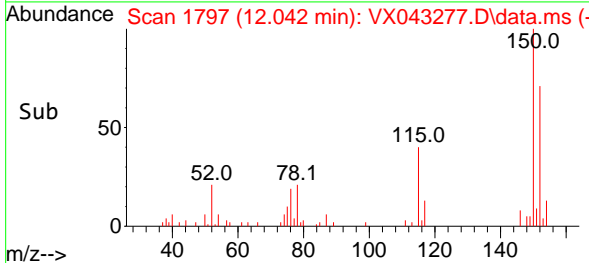
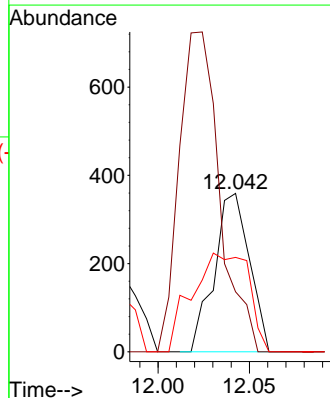
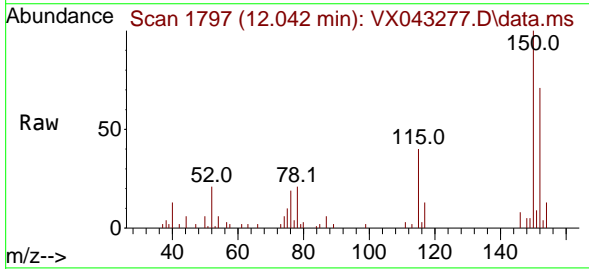
Ion	Ratio	Lower	Upper
75	100		
53	0.0	83.9	125.9#
89	0.1	38.6	58.0#

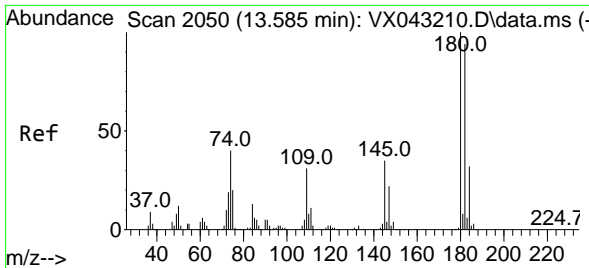


#88
 1,4-Dichlorobenzene
 Concen: 0.246 ug/l
 RT: 12.042 min Scan# 1797
 Delta R.T. -0.000 min
 Lab File: VX043277.D
 Acq: 04 Oct 2024 10:37

Tgt Ion:146 Resp: 481

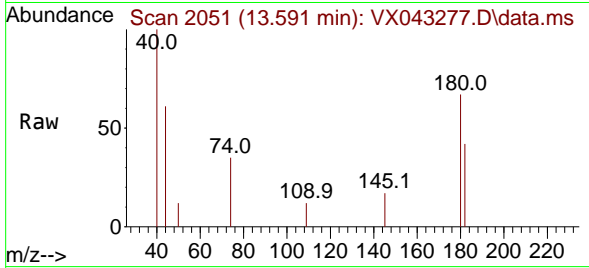
Ion	Ratio	Lower	Upper
146	100		
111	231.6	20.8	62.5#
148	100.0	32.4	97.0#



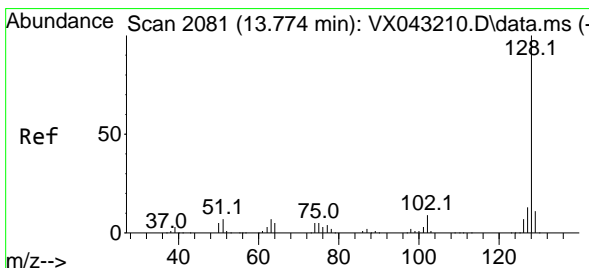
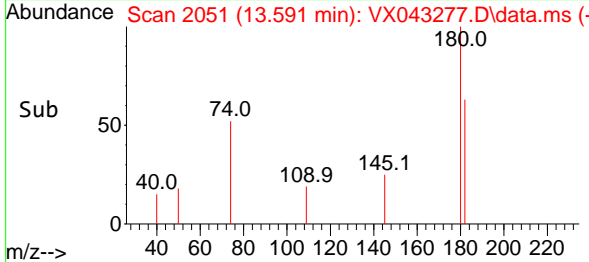
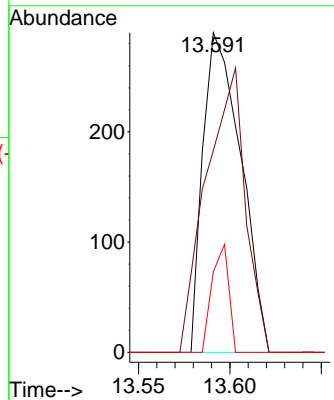


#93
 1,2,4-Trichlorobenzene
 Concen: 0.376 ug/l
 RT: 13.591 min Scan# 2050
 Delta R.T. 0.006 min
 Lab File: VX043277.D
 Acq: 04 Oct 2024 10:37

Instrument : MSVOA_X
 ClientSampleId : RE114D1-20240930DL

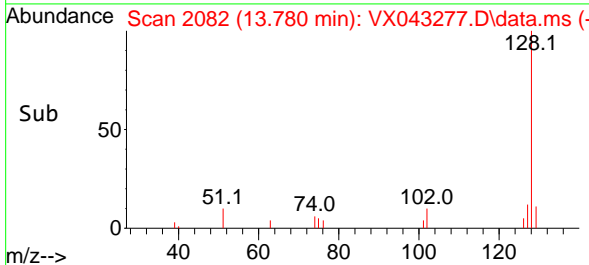
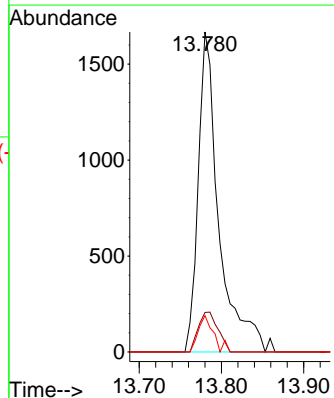
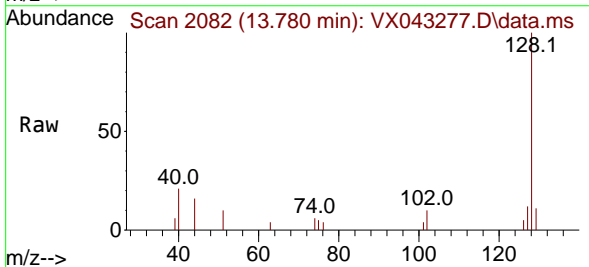


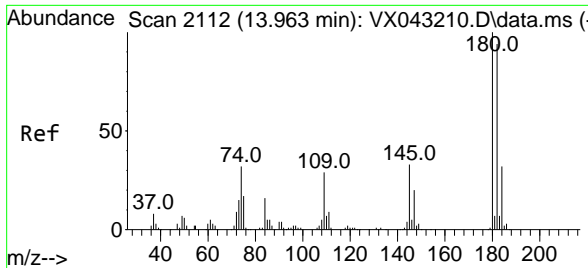
Tgt Ion:180 Resp: 420
 Ion Ratio Lower Upper
 180 100
 182 91.4 47.1 141.3
 145 15.0 16.6 49.8#



#95
 Naphthalene
 Concen: 0.713 ug/l
 RT: 13.780 min Scan# 2082
 Delta R.T. 0.006 min
 Lab File: VX043277.D
 Acq: 04 Oct 2024 10:37

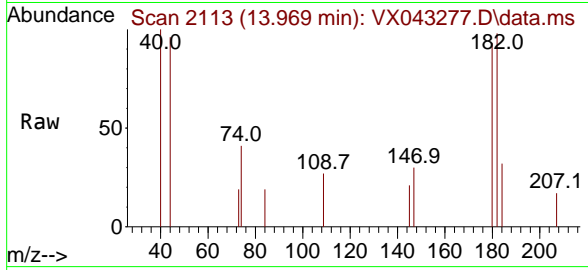
Tgt Ion:128 Resp: 2927
 Ion Ratio Lower Upper
 128 100
 127 11.8 10.2 15.2
 129 8.3 8.6 13.0#





#96
 1,2,3-Trichlorobenzene
 Concen: 0.391 ug/l
 RT: 13.969 min Scan# 2113
 Delta R.T. 0.006 min
 Lab File: VX043277.D
 Acq: 04 Oct 2024 10:37

Instrument :
 MSVOA_X
 ClientSampleId :
 RE114D1-20240930DL



Tgt Ion:180 Resp: 450

Ion	Ratio	Lower	Upper
180	100		
182	106.7	46.5	139.3
145	27.6	17.2	51.6

