

Data Path : Z:\VOASRV\HPCHEM1\MSVOA X\DATA\VX100518\
 Data File : VX005100.D
 Acq On : 06 Oct 2018 07:19
 Operator : JC/MD
 Sample : J5224-02
 Misc : 5.0mL/MSVOA X/WATER
 ALS Vial : 35 Sample Multiplier: 1

Instrument :
 MSVOA_X
 ClientSampled :
 FA18-QBC6

Quant Time: Oct 08 00:56:30 2018
 Quant Method : Z:\VOASRV\HPCHEM1\MSVOA_X\METHOD\82X092618W.M
 Quant Title : SW846 8260
 QLast Update : Wed Oct 03 04:00:03 2018
 Response via : Initial Calibration

Internal Standards	R.T.	QIon	Response	Conc	Units	Dev(Min)
1) Pentafluorobenzene	5.65	168	223902	50.00	ug/l	0.00
34) 1,4-Difluorobenzene	6.86	114	327207	50.00	ug/l	0.00
63) Chlorobenzene-d5	10.12	117	325208	50.00	ug/l	0.00
72) 1,4-Dichlorobenzene-d4	12.08	152	185859	50.00	ug/l	0.00

System Monitoring Compounds

33) 1,2-Dichloroethane-d4	6.07	65	172437	53.91	ug/l	0.00
Spiked Amount	50.000		Recovery	=	107.82%	
35) Dibromofluoromethane	5.51	113	152640	55.04	ug/l	0.00
Spiked Amount	50.000		Recovery	=	110.08%	
50) Toluene-d8	8.72	98	477363	51.78	ug/l	0.00
Spiked Amount	50.000		Recovery	=	103.56%	
62) 4-Bromofluorobenzene	11.14	95	174822	52.64	ug/l	0.00
Spiked Amount	50.000		Recovery	=	105.28%	

Target Compounds

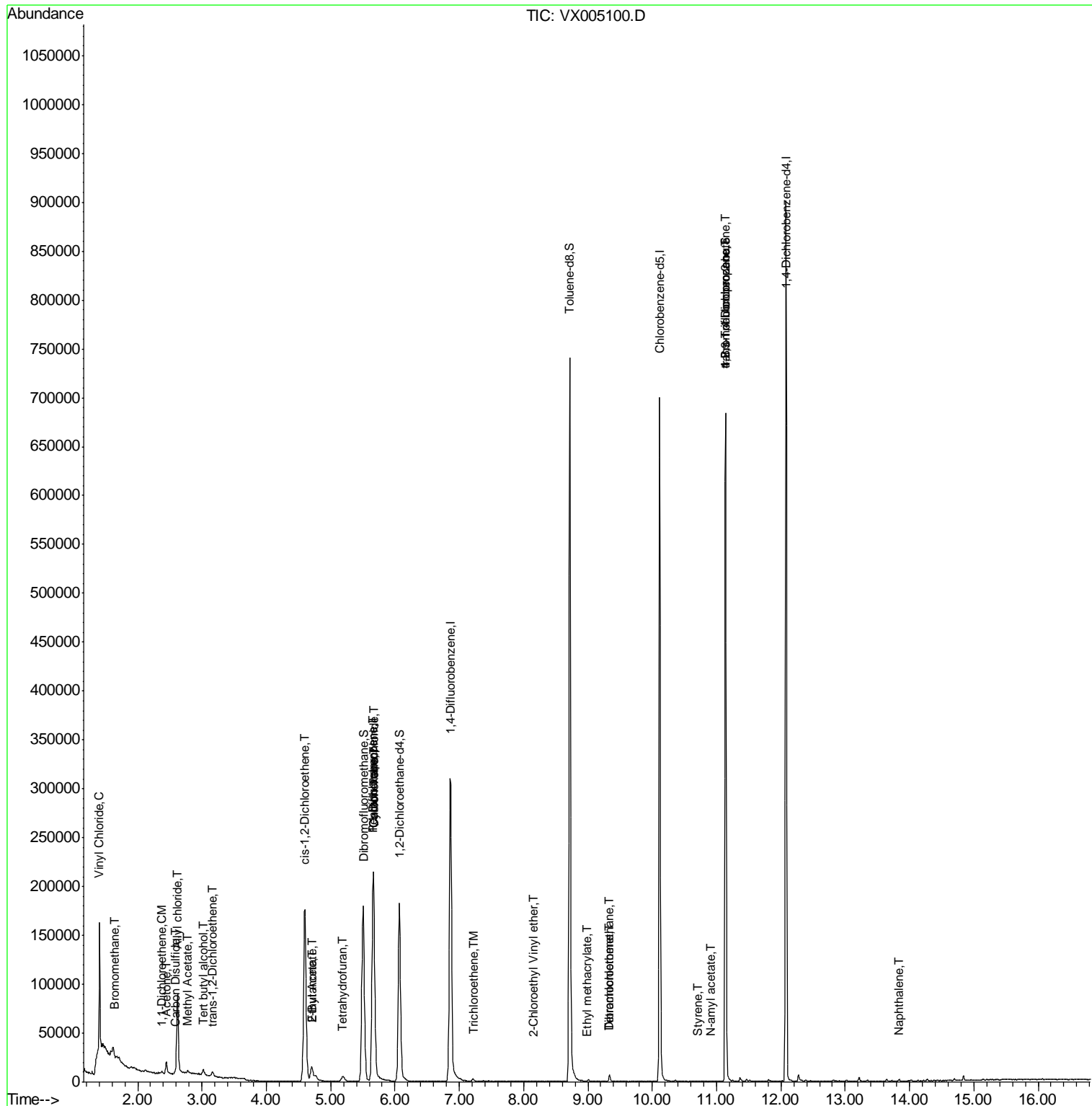
					Qvalue	
4) Vinyl Chloride	1.40	62	81901	23.577	ug/l	91
5) Bromomethane	1.64	94	797	0.387	ug/l #	57
6) Chloroethane	1.67	64	2680	Below Cal	#	58
11) Tert butyl alcohol	3.02	59	3267	3.653	ug/l #	75
12) 1,1-Dichloroethene	2.38	96	639	0.263	ug/l #	54
14) Allyl chloride	2.62	41	8340	1.576	ug/l #	67
16) Acetone	2.45	43	13175	7.056	ug/l	99
17) Carbon Disulfide	2.57	76	3576	0.491	ug/l #	91
18) Methyl Acetate	2.78	43	2455	0.519	ug/l	93
20) Methylene Chloride	2.87	84	241	Below Cal	#	58
21) trans-1,2-Dichloroethene	3.17	96	1508	0.568	ug/l #	65
25) 2-Butanone	4.71	43	26288	9.551	ug/l	97
27) cis-1,2-Dichloroethene	4.60	96	117395	39.569	ug/l	88
29) Tetrahydrofuran	5.18	42	1220	0.713	ug/l #	34
31) Cyclohexane	5.67	56	4404	1.082	ug/l #	1
36) 1,1-Dichloropropene	5.65	75	16209	4.284	ug/l #	45
37) Ethyl Acetate	4.71	43	26288	5.234	ug/l #	69
38) Carbon Tetrachloride	5.66	117	20511	5.157	ug/l #	18
44) Trichloroethene	7.21	130	988	0.339	ug/l	58
56) Ethyl methacrylate	8.98	69	63	2.875	ug/l #	30
58) 2-Chloroethyl Vinyl ether	8.15	63	21	14.250	ug/l #	49
60) Dibromochloromethane	9.34	129	1006	0.353	ug/l #	10
64) Tetrachloroethene	9.34	164	1176	0.367	ug/l	92
70) Styrene	10.71	104	105	2.152	ug/l #	42
74) N-amyl acetate	10.91	43	281	1.790	ug/l #	59
76) 1,2,3-Trichloropropane	11.14	75	86853	20.849	ug/l #	35
80) 1,3,5-Trimethylbenzene	11.51	105	181	Below Cal		74
81) trans-1,4-Dichloro-2-buten	11.14	75	86853	56.591	ug/l #	10
84) 1,2,4-Trimethylbenzene	11.81	105	743	Below Cal	#	54
95) Naphthalene	13.83	128	1036	0.786	ug/l #	90

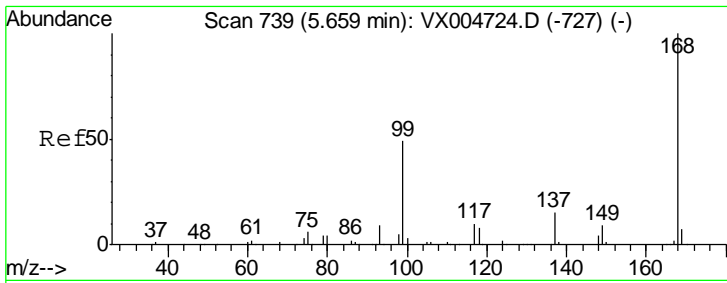
(#) = qualifier out of range (m) = manual integration (+) = signals summed

Data Path : Z:\VOASRV\HPCHEM1\MSVOA X\DATA\VX100518\
 Data File : VX005100.D
 Acq On : 06 Oct 2018 07:19
 Operator : JC/MD
 Sample : J5224-02
 Misc : 5.0mL/MSVOA X/WATER
 ALS Vial : 35 Sample Multiplier: 1

Instrument :
 MSVOA_X
 Client Sampled :
 FA18-QBC6

Quant Time: Oct 08 00:56:30 2018
 Quant Method : Z:\VOASRV\HPCHEM1\MSVOA_X\METHOD\82X092618W.M
 Quant Title : SW846 8260
 QLast Update : Wed Oct 03 04:00:03 2018
 Response via : Initial Calibration

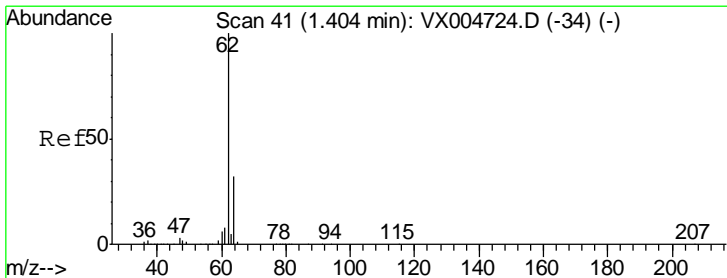
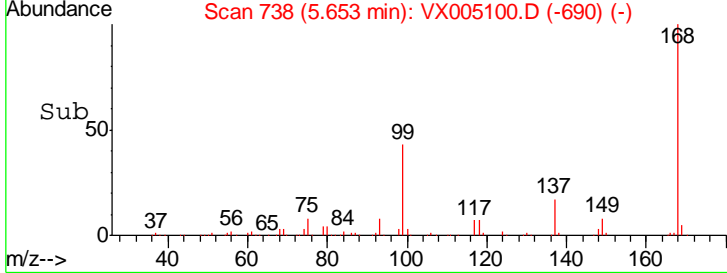
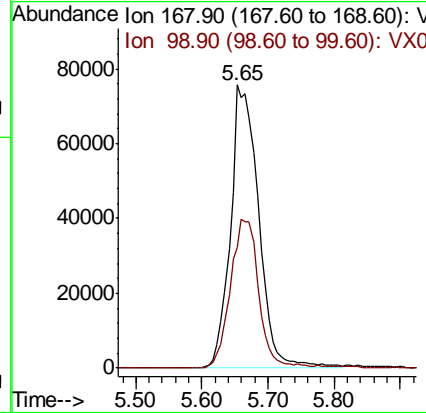
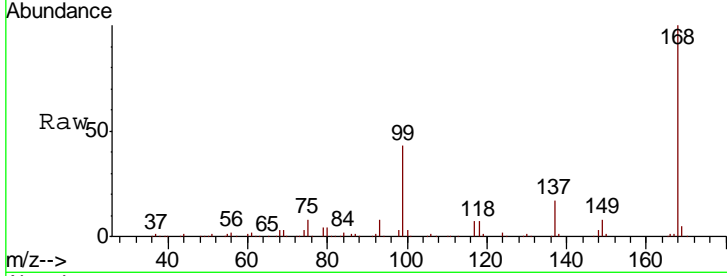




#1
 Pentafluorobenzene
 Concen: 50.000 ug/l
 RT: 5.65 min Scan# 738
 Delta R.T. -0.01 min
 Lab File: VX005100.D
 Acq: 06 Oct 2018 07:19

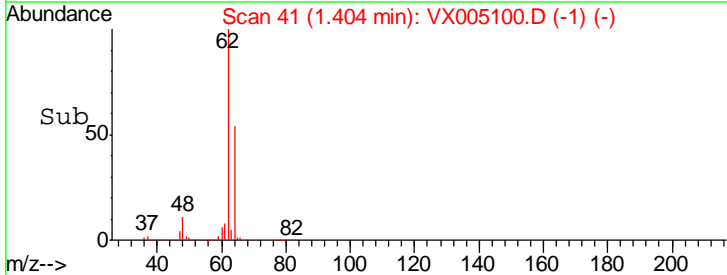
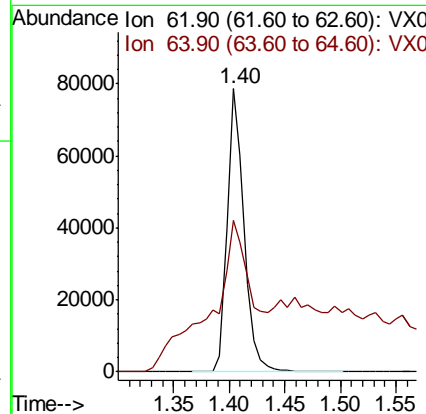
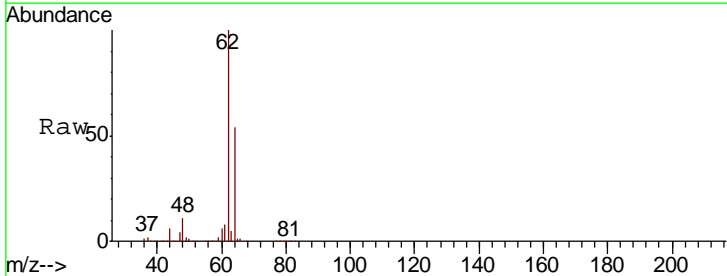
Instrument :
 MSVOA_X
ClientSampled :
 FA18-QBC6

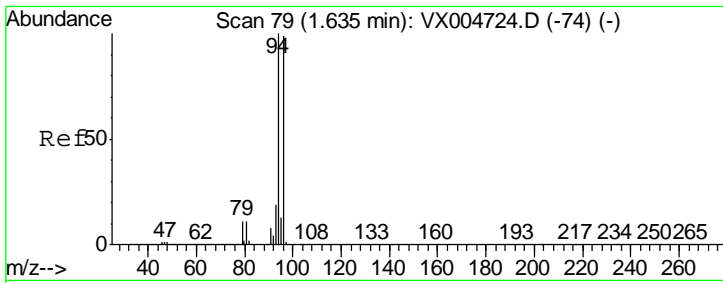
Tgt Ion: 168 Resp: 223902
 Ion Ratio Lower Upper
 168 100
 99 42.7 39.3 58.9



#4
 Vinyl Chloride
 Concen: 23.577 ug/l
 RT: 1.40 min Scan# 41
 Delta R.T. 0.00 min
 Lab File: VX005100.D
 Acq: 06 Oct 2018 07:19

Tgt Ion: 62 Resp: 81901
 Ion Ratio Lower Upper
 62 100
 64 36.8 25.5 38.3

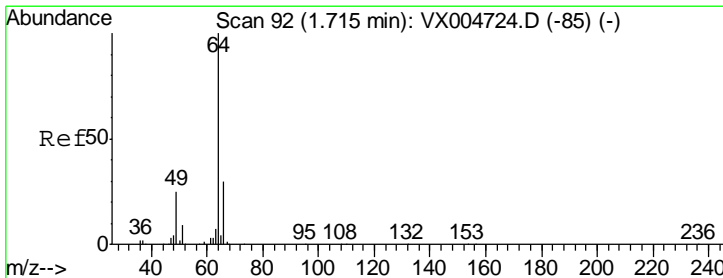
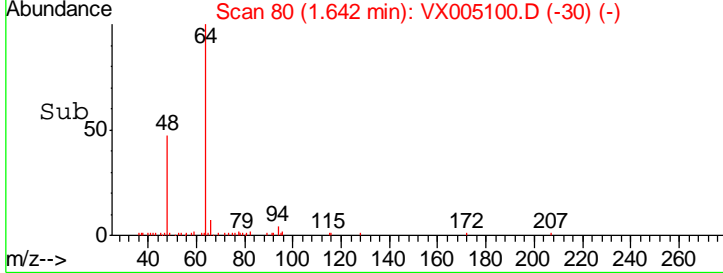
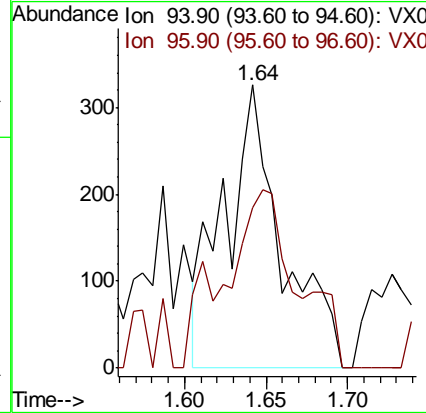
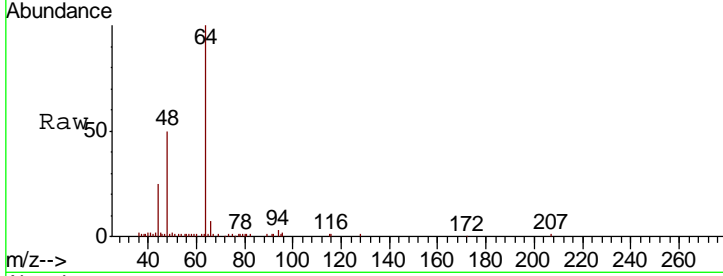




#5
 Bromomethane
 Concen: 0.387 ug/l
 RT: 1.64 min Scan# 80
 Delta R.T. 0.01 min
 Lab File: VX005100.D
 Acq: 06 Oct 2018 07:19

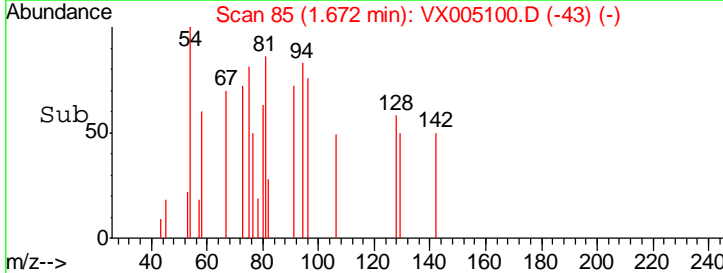
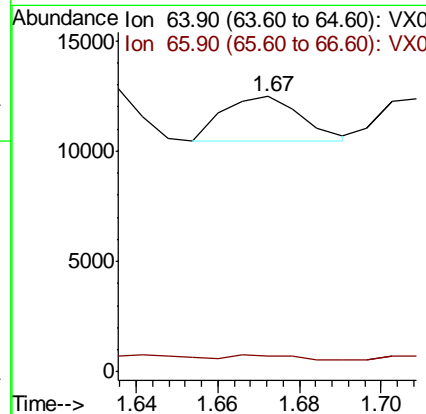
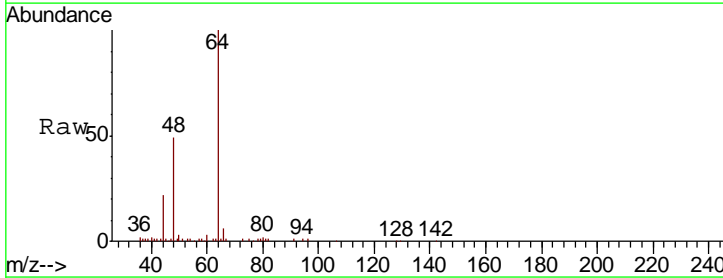
Instrument :
 MSVOA_X
ClientSampled :
 FA18-QBC6

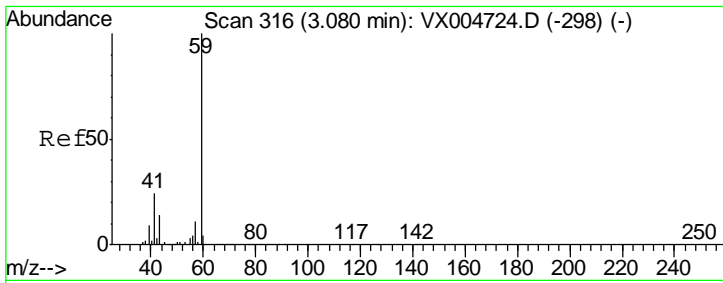
Tgt Ion	Resp	Lower	Upper
94	100		
96	56.4	79.5	119.3#



#6
 Chloroethane
 Concen: Below Cal
 RT: 1.67 min Scan# 85
 Delta R.T. -0.04 min
 Lab File: VX005100.D
 Acq: 06 Oct 2018 07:19

Tgt Ion	Resp	Lower	Upper
64	100		
66	7.2	23.8	35.6#

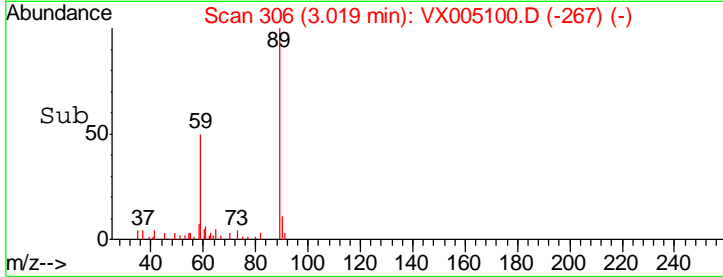
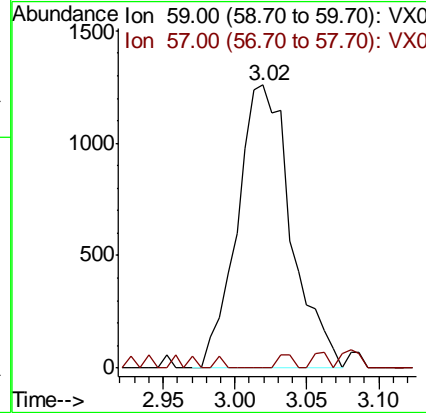
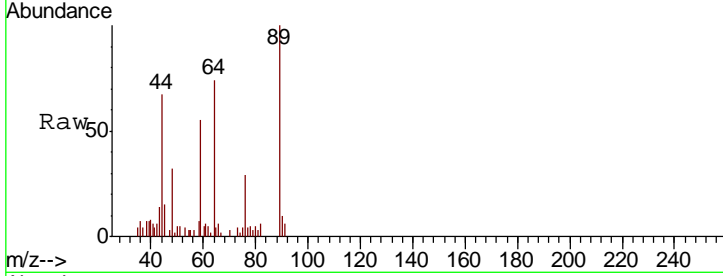




#11
 Tert butyl alcohol
 Concen: 3.653 ug/l
 RT: 3.02 min Scan# 306
 Delta R.T. -0.06 min
 Lab File: VX005100.D
 Acq: 06 Oct 2018 07:19

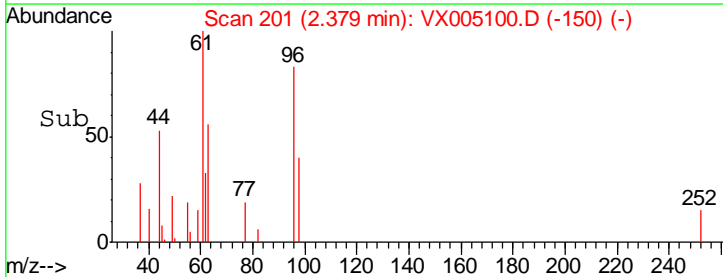
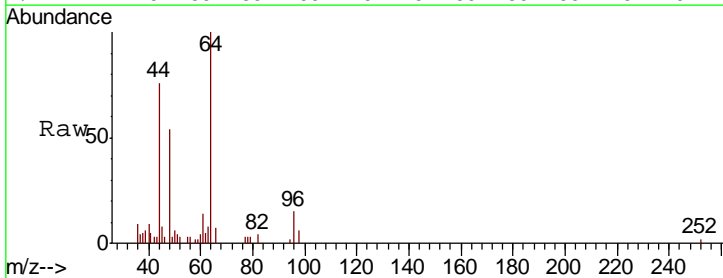
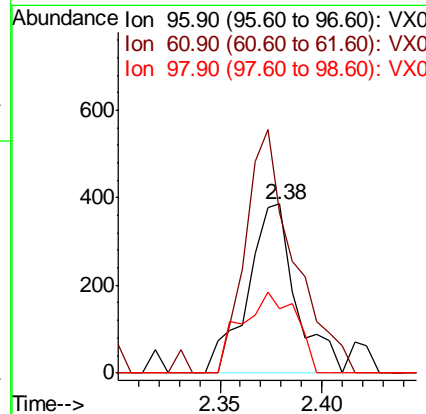
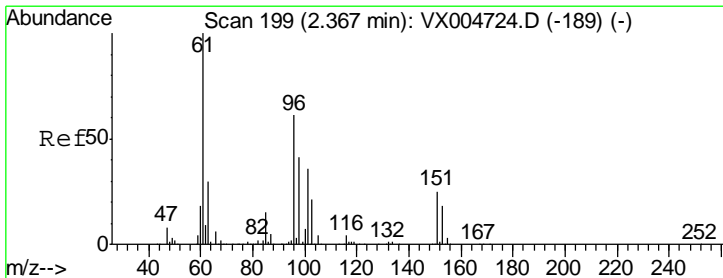
Instrument :
 MSVOA_X
 ClientSampled :
 FA18-QBC6

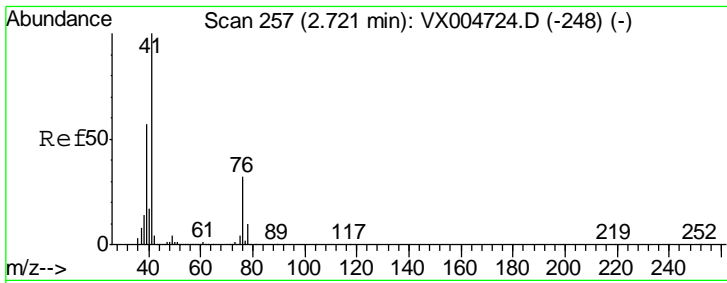
Tgt Ion: 59 Resp: 3267
 Ion Ratio Lower Upper
 59 100
 57 1.3 8.6 12.8#



#12
 1,1-Dichloroethene
 Concen: 0.263 ug/l
 RT: 2.38 min Scan# 201
 Delta R.T. 0.01 min
 Lab File: VX005100.D
 Acq: 06 Oct 2018 07:19

Tgt Ion: 96 Resp: 639
 Ion Ratio Lower Upper
 96 100
 61 95.1 130.2 195.4#
 98 38.1 53.4 80.0#

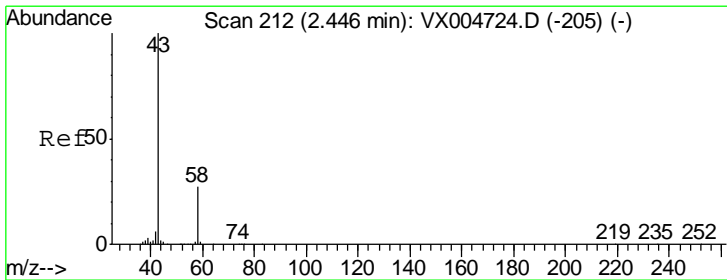
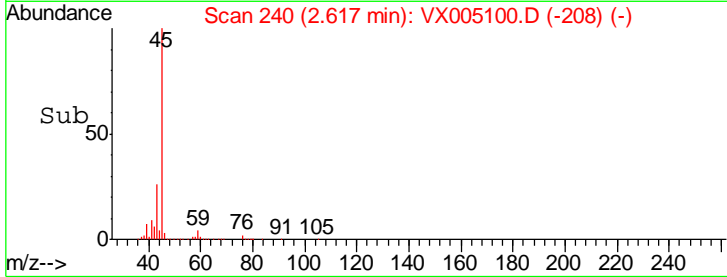
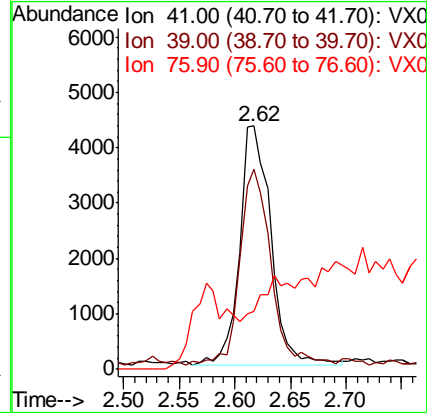
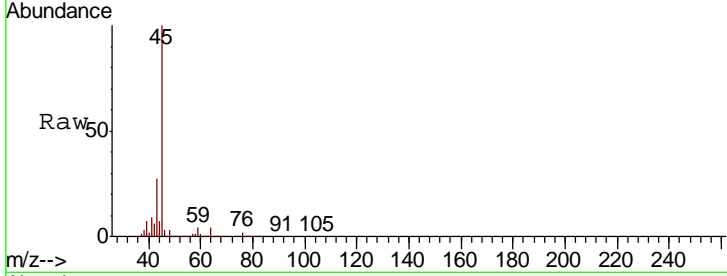




#14
 Allvl chloride
 Concen: 1.576 ug/l
 RT: 2.62 min Scan# 240
 Delta R.T. -0.10 min
 Lab File: VX005100.D
 Acq: 06 Oct 2018 07:19

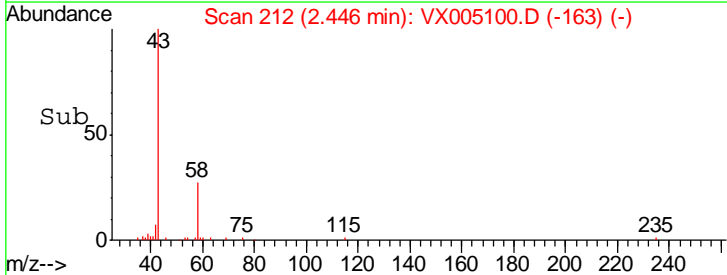
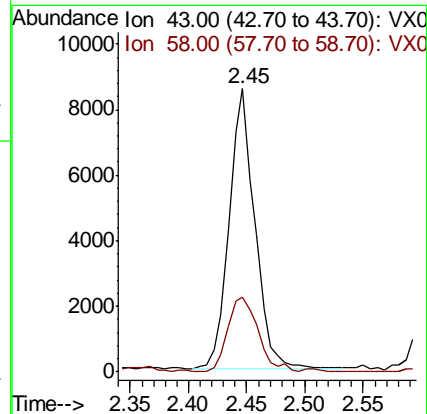
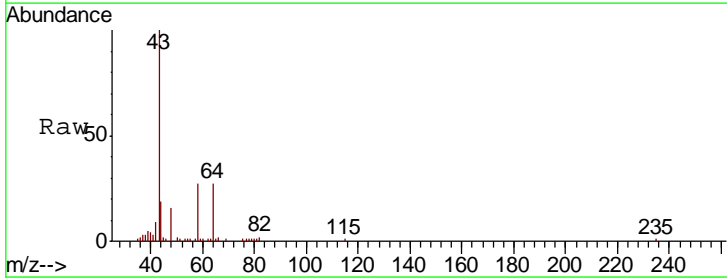
Instrument :
 MSVOA_X
 ClientSampleId :
 FA18-QBC6

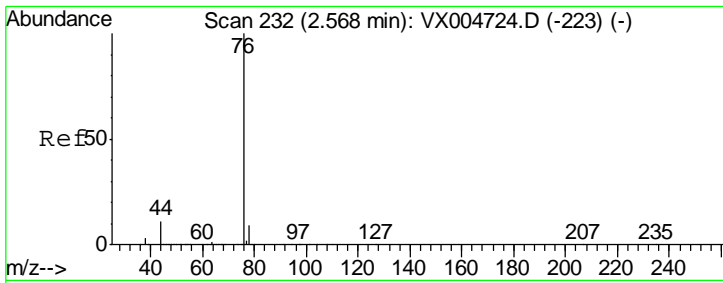
Tgt Ion	Resp	Lower	Upper
41	100		
39	82.5	44.1	66.1#
76	17.9	25.0	37.4#



#16
 Acetone
 Concen: 7.056 ug/l
 RT: 2.45 min Scan# 212
 Delta R.T. 0.00 min
 Lab File: VX005100.D
 Acq: 06 Oct 2018 07:19

Tgt Ion	Resp	Lower	Upper
43	100		
58	26.9	21.8	32.6

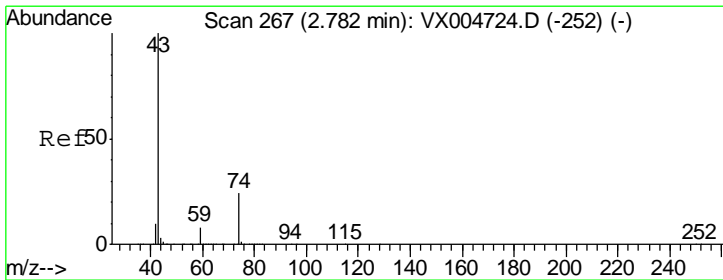
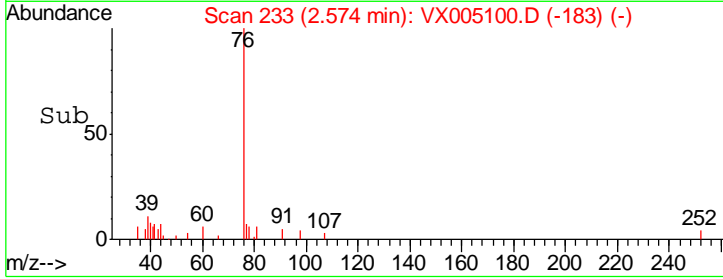
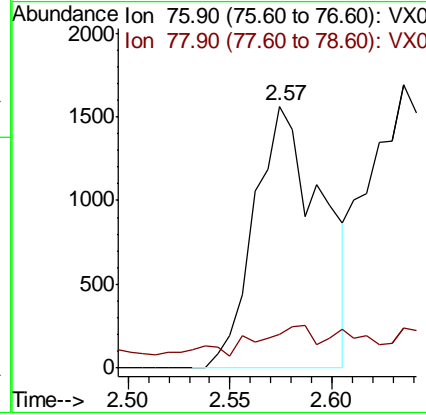
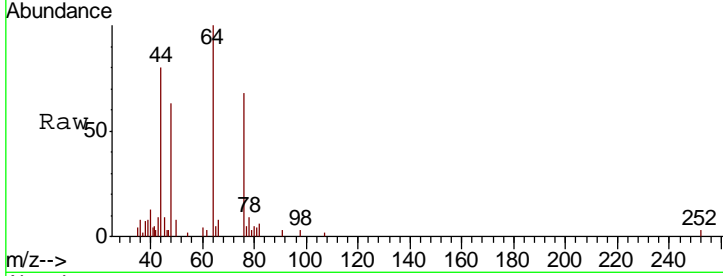




#17
 Carbon Disulfide
 Concen: 0.491 ug/l
 RT: 2.57 min Scan# 233
 Delta R.T. 0.01 min
 Lab File: VX005100.D
 Acq: 06 Oct 2018 07:19

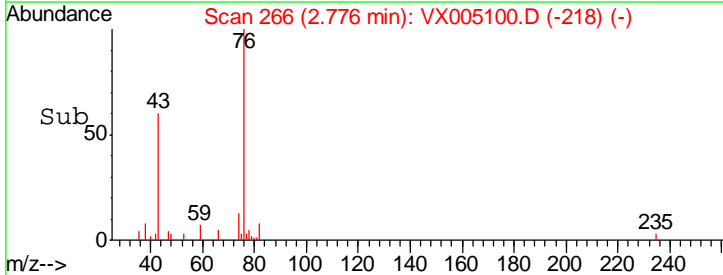
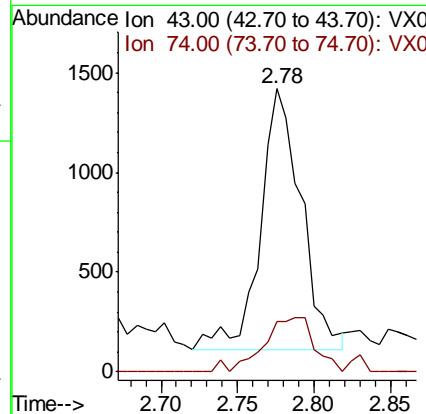
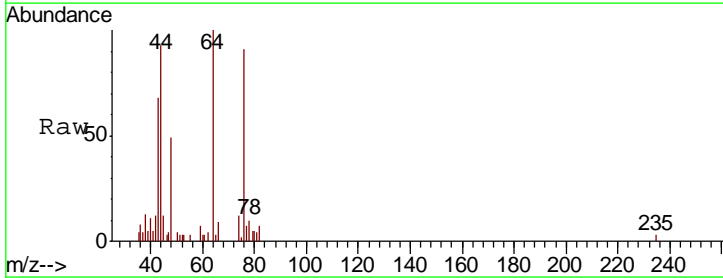
Instrument :
 MSVOA_X
ClientSampled :
 FA18-QBC6

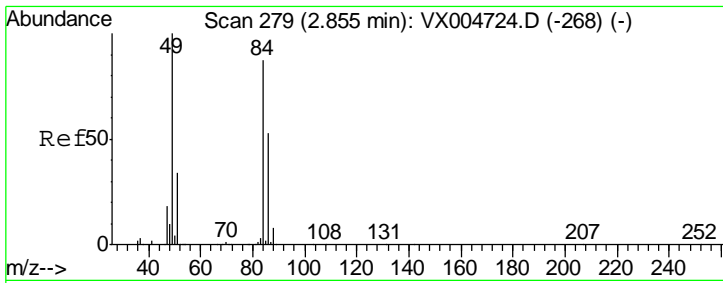
Tgt Ion	Resp	Lower	Upper
76	100		
78	5.6	7.0	10.6#



#18
 Methyl Acetate
 Concen: 0.519 ug/l
 RT: 2.78 min Scan# 266
 Delta R.T. -0.01 min
 Lab File: VX005100.D
 Acq: 06 Oct 2018 07:19

Tgt Ion	Resp	Lower	Upper
43	100		
74	25.9	17.8	26.8

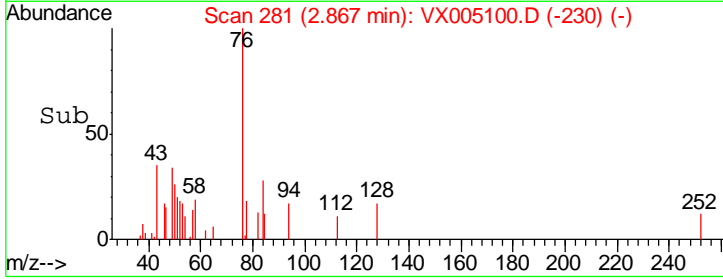
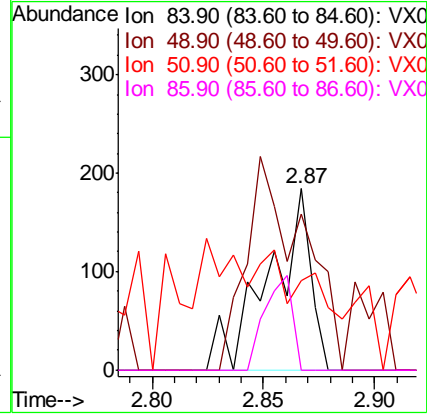
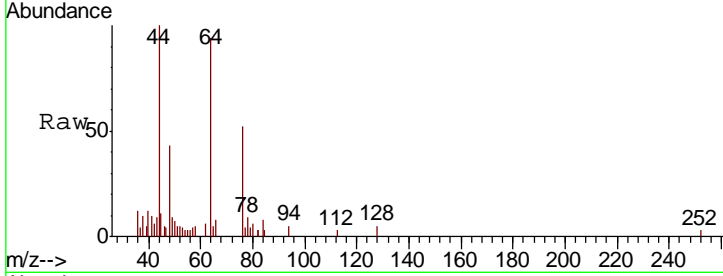




#20
 Methylene Chloride
 Concen: Below Cal
 RT: 2.87 min Scan# 281
 Delta R.T. 0.01 min
 Lab File: VX005100.D
 Acq: 06 Oct 2018 07:19

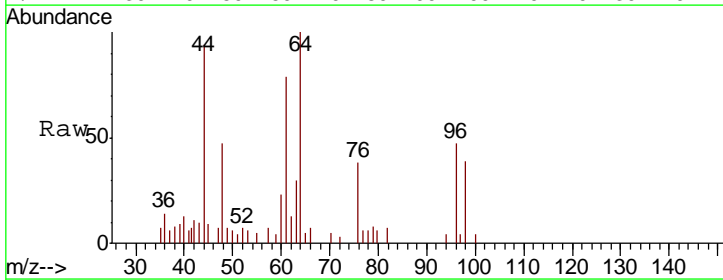
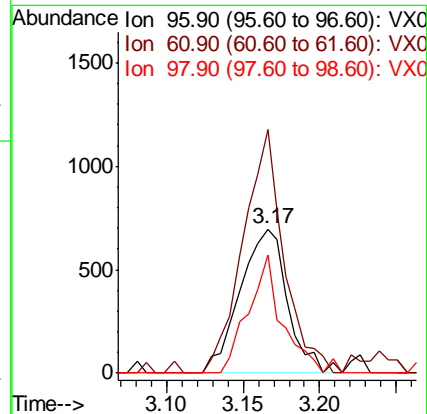
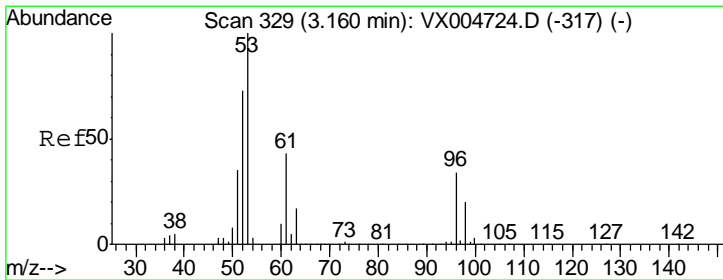
Instrument :
 MSVOA_X
 ClientSampled :
 FA18-QBC6

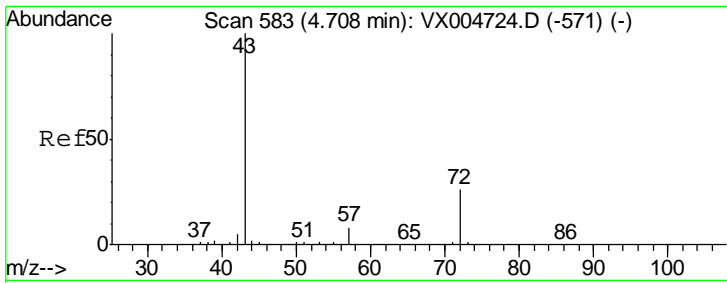
Tgt Ion	Resp	Lower	Upper
84	100		
49	85.9	92.3	138.5#
51	21.2	31.8	47.6#
86	0.0	48.5	72.7#



#21
 trans-1,2-Dichloroethene
 Concen: 0.568 ug/l
 RT: 3.17 min Scan# 330
 Delta R.T. 0.01 min
 Lab File: VX005100.D
 Acq: 06 Oct 2018 07:19

Tgt Ion	Resp	Lower	Upper
96	100		
61	168.6	101.0	151.6#
98	82.2	47.2	70.8#

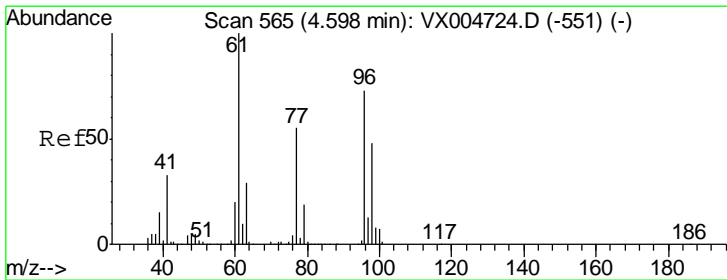
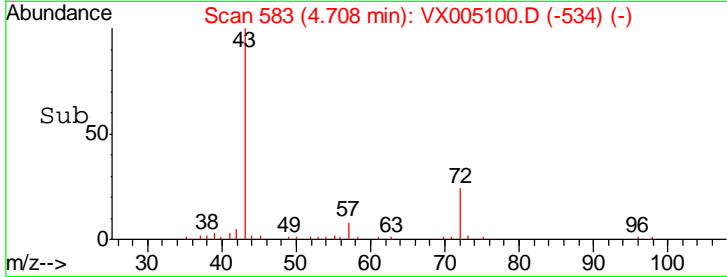
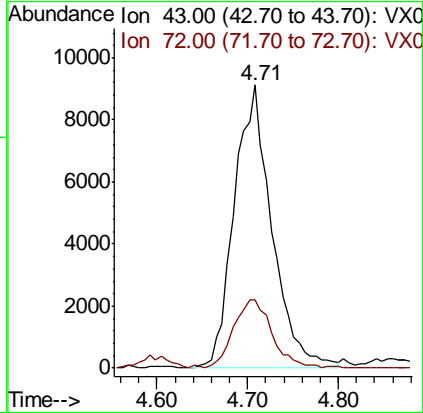
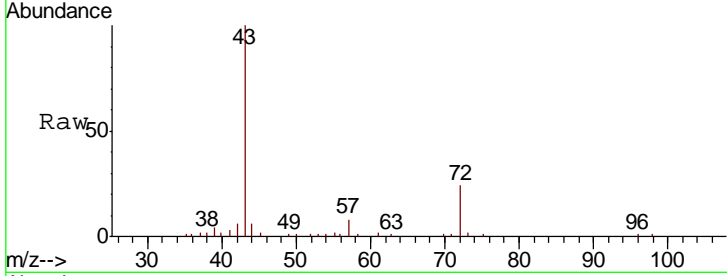




#25
 2-Butanone
 Concen: 9.551 ug/l
 RT: 4.71 min Scan# 583
 Delta R.T. 0.00 min
 Lab File: VX005100.D
 Acq: 06 Oct 2018 07:19

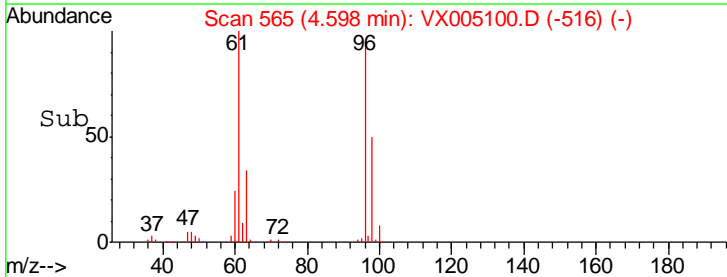
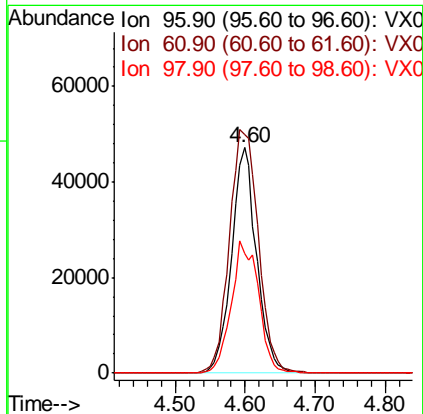
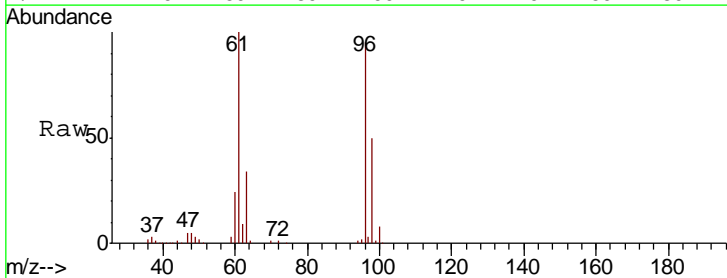
Instrument :
 MSVOA_X
 ClientSampled :
 FA18-QBC6

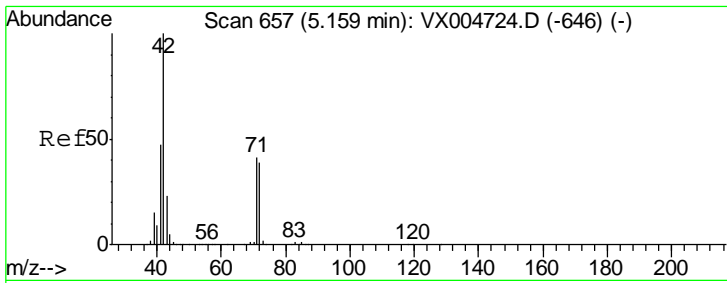
Tgt Ion	Resp	Lower	Upper
43	100		
72	24.3	20.8	31.2



#27
 cis-1,2-Dichloroethene
 Concen: 39.569 ug/l
 RT: 4.60 min Scan# 565
 Delta R.T. 0.00 min
 Lab File: VX005100.D
 Acq: 06 Oct 2018 07:19

Tgt Ion	Resp	Lower	Upper
96	100		
61	124.3	0.0	285.8
98	63.8	0.0	136.2

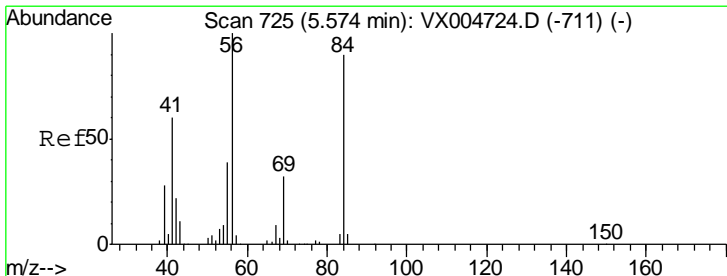
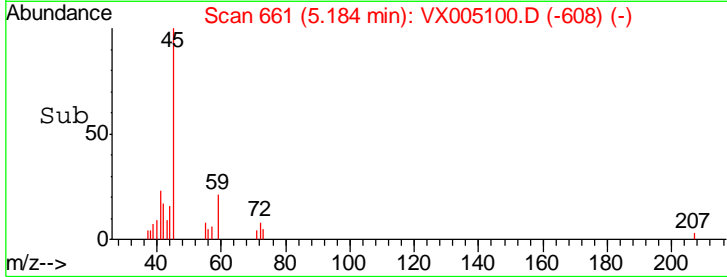
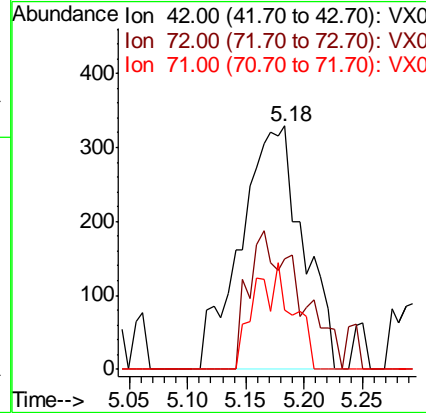
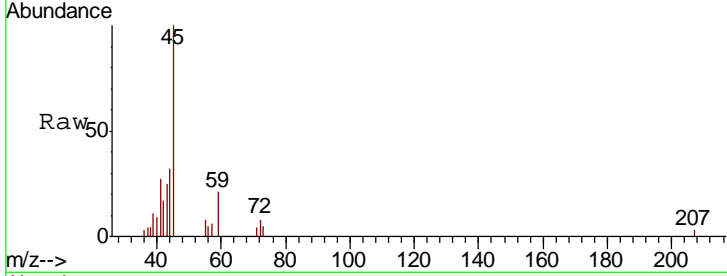




#29
 Tetrahydrofuran
 Concen: 0.713 ug/l
 RT: 5.18 min Scan# 661
 Delta R.T. 0.02 min
 Lab File: VX005100.D
 Acq: 06 Oct 2018 07:19

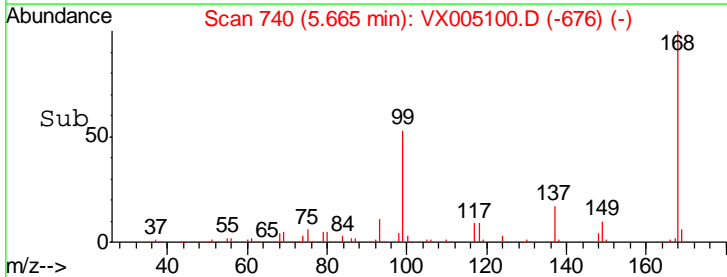
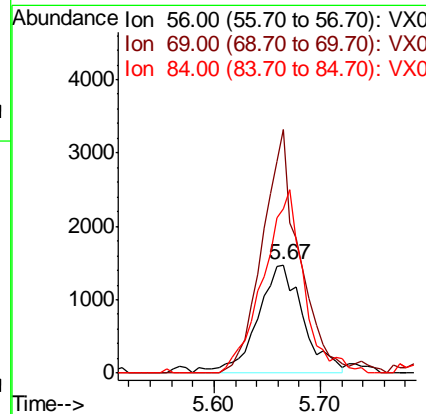
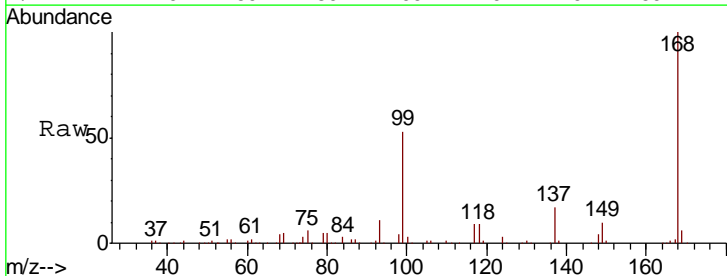
Instrument :
 MSVOA_X
 ClientSampled :
 FA18-QBC6

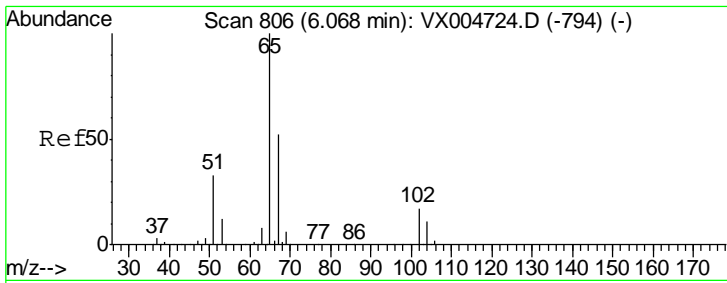
Tgt Ion	Resp	Lower	Upper
42	1220		
72	0.0	33.7	50.5#
71	0.0	32.2	48.4#



#31
 Cyclohexane
 Concen: 1.082 ug/l
 RT: 5.67 min Scan# 740
 Delta R.T. 0.09 min
 Lab File: VX005100.D
 Acq: 06 Oct 2018 07:19

Tgt Ion	Resp	Lower	Upper
56	4404		
69	225.3	25.9	38.9#
84	151.7	71.9	107.9#

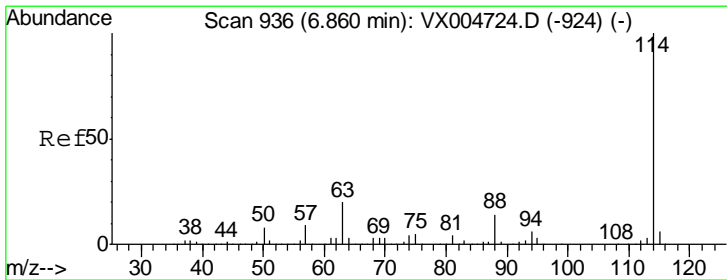
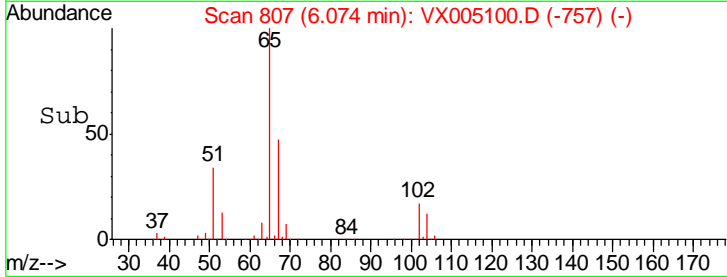
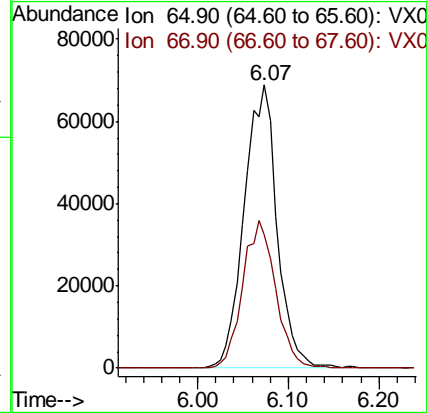
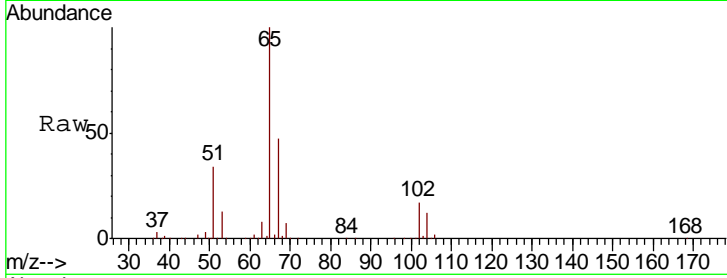




#33
 1,2-Dichloroethane-d4
 Concen: 53.913 ug/l
 RT: 6.07 min Scan# 807
 Delta R.T. 0.01 min
 Lab File: VX005100.D
 Acq: 06 Oct 2018 07:19

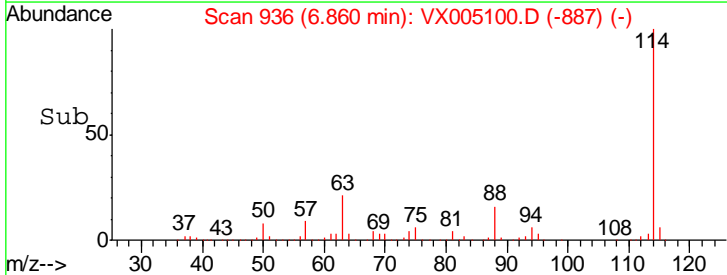
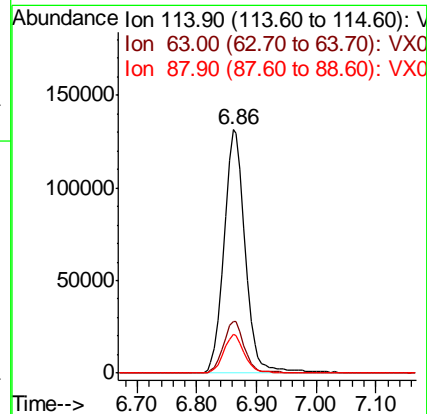
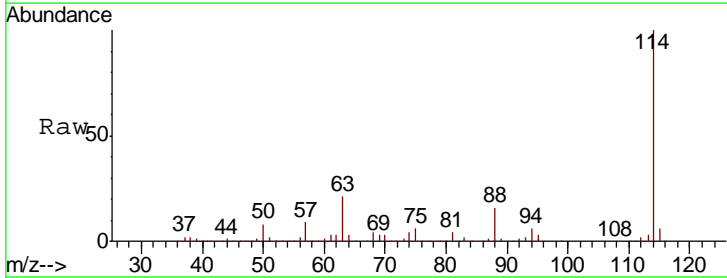
Instrument :
 MSVOA_X
 ClientSampled :
 FA18-QBC6

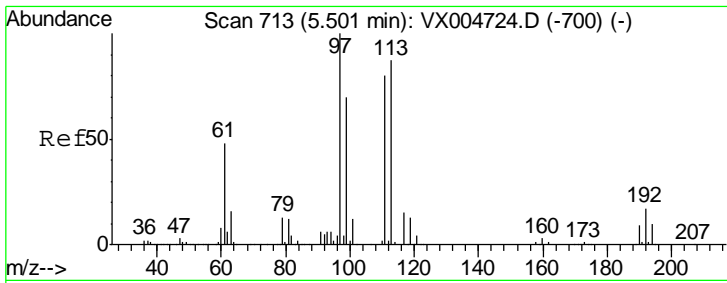
Tgt Ion	Resp	Lower	Upper
65	172437		
67	52.6	0.0	107.4



#34
 1,4-Difluorobenzene
 Concen: 50.000 ug/l
 RT: 6.86 min Scan# 936
 Delta R.T. 0.00 min
 Lab File: VX005100.D
 Acq: 06 Oct 2018 07:19

Tgt Ion	Resp	Lower	Upper
114	327207		
63	21.2	0.0	39.8
88	16.2	0.0	27.0

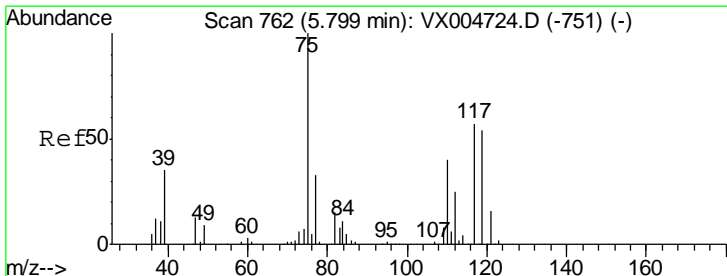
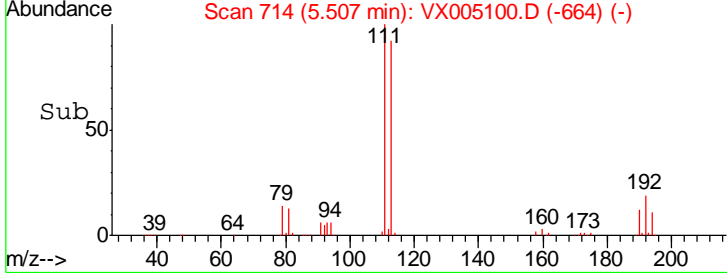
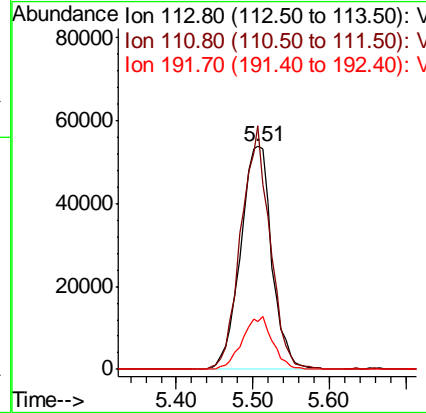
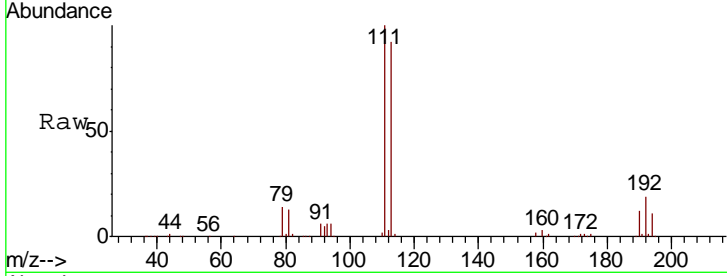




#35
 Dibromofluoromethane
 Concen: 55.043 ug/l
 RT: 5.51 min Scan# 714
 Delta R.T. 0.01 min
 Lab File: VX005100.D
 Acq: 06 Oct 2018 07:19

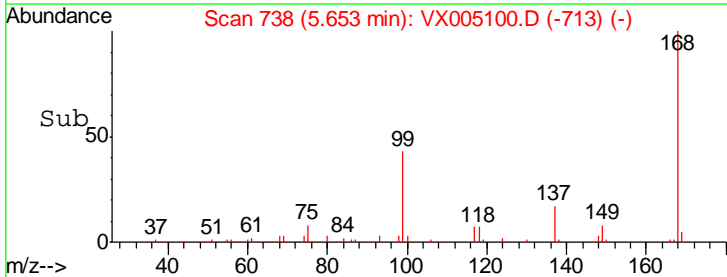
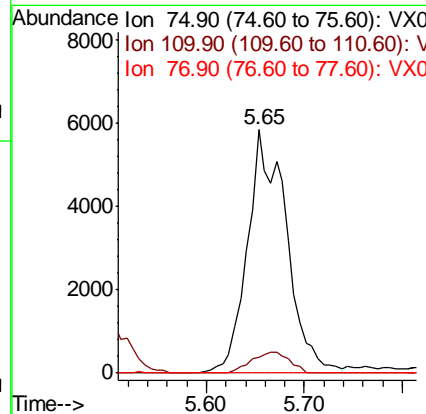
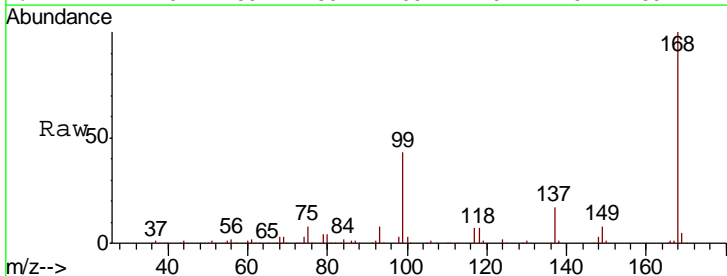
Instrument :
 MSVOA_X
ClientSampled :
 FA18-QBC6

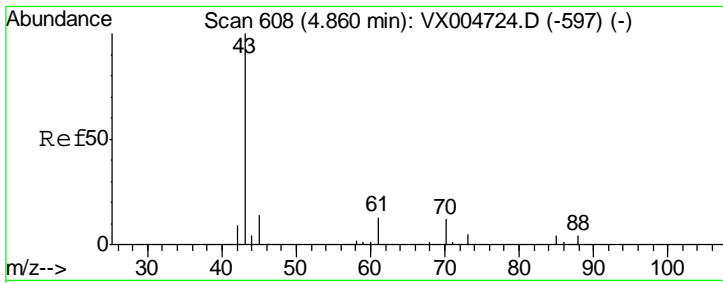
Tgt Ion	Resp	Lower	Upper
113	100		
111	100.8	77.0	115.4
192	22.9	17.0	25.6



#36
 1,1-Dichloropropene
 Concen: 4.284 ug/l
 RT: 5.65 min Scan# 738
 Delta R.T. -0.15 min
 Lab File: VX005100.D
 Acq: 06 Oct 2018 07:19

Tgt Ion	Resp	Lower	Upper
75	100		
110	8.3	20.0	59.9#
77	0.0	27.1	40.7#

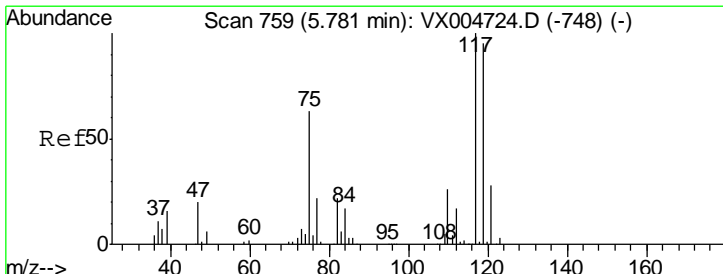
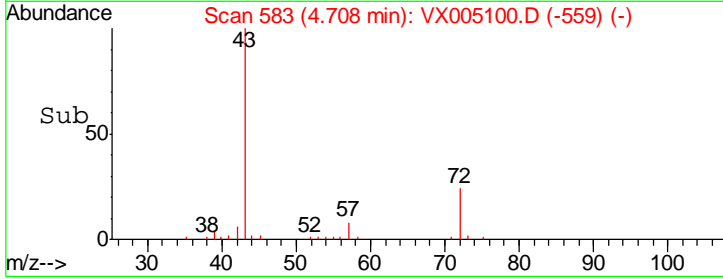
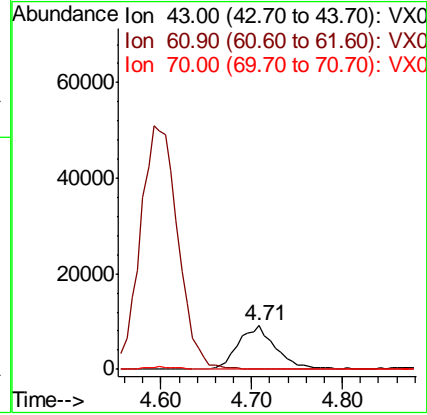
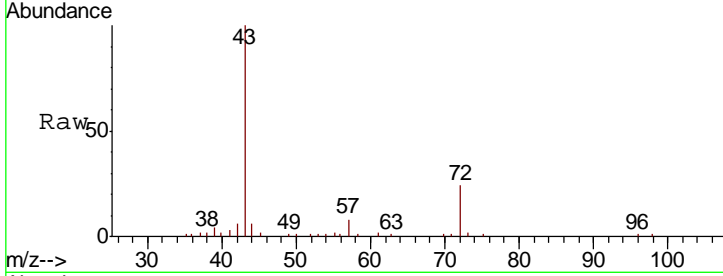




#37
Ethyl Acetate
Concen: 5.234 ug/l
RT: 4.71 min Scan# 583
Delta R.T. -0.15 min
Lab File: VX005100.D
Acq: 06 Oct 2018 07:19

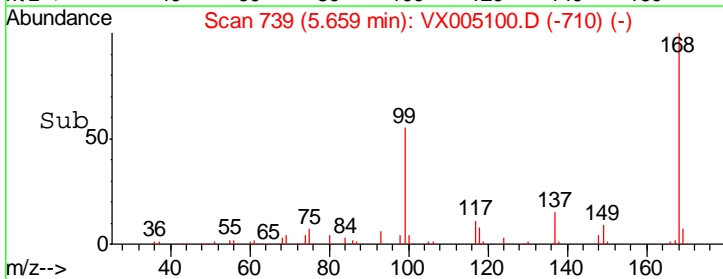
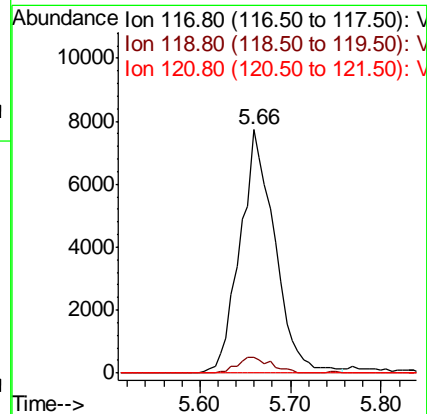
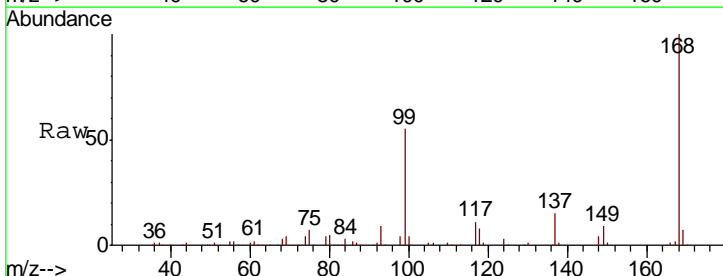
Instrument :
MSVOA_X
ClientSampled :
FA18-QBC6

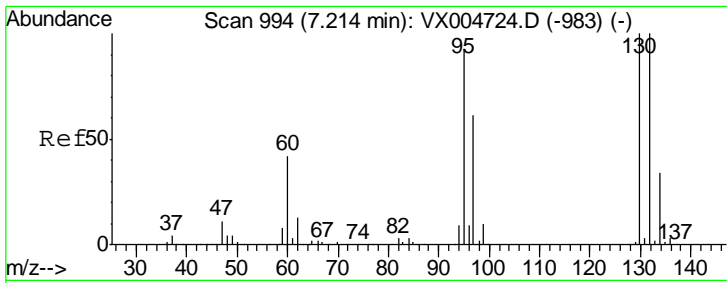
Tgt Ion	Resp	Lower	Upper
43	26288		
61	0.0	10.4	15.6#
70	0.2	8.7	13.1#



#38
Carbon Tetrachloride
Concen: 5.157 ug/l
RT: 5.66 min Scan# 739
Delta R.T. -0.12 min
Lab File: VX005100.D
Acq: 06 Oct 2018 07:19

Tgt Ion	Resp	Lower	Upper
117	20511		
119	6.4	75.2	112.8#
121	0.0	22.5	33.7#

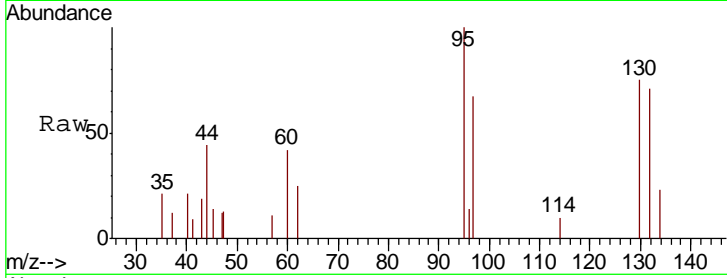




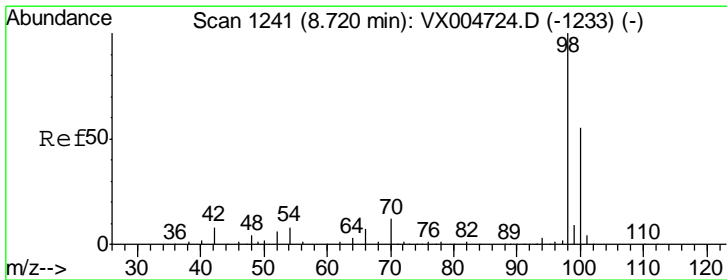
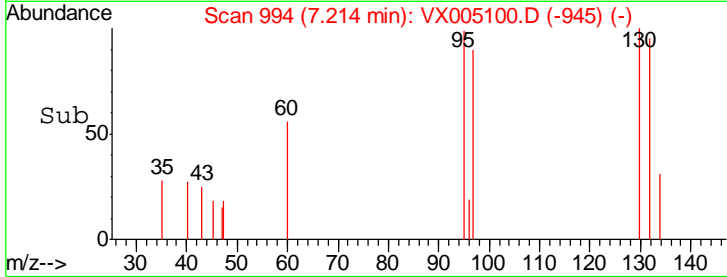
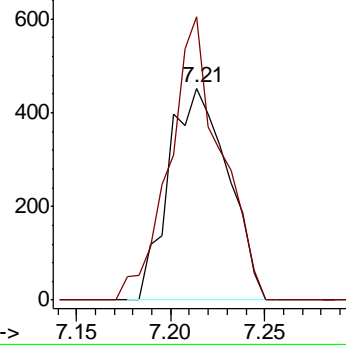
#44
 Trichloroethene
 Concen: 0.339 ug/l
 RT: 7.21 min Scan# 994
 Delta R.T. 0.00 min
 Lab File: VX005100.D
 Acq: 06 Oct 2018 07:19

Instrument :
 MSVOA_X
 ClientSampled :
 FA18-QBC6

Tgt Ion: 130 Resp: 988
 Ion Ratio Lower Upper
 130 100
 95 133.6 0.0 186.8

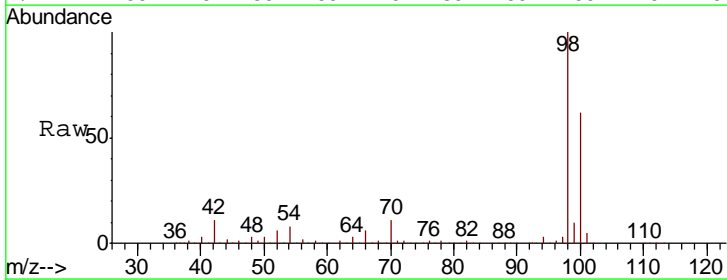


Abundance Ion 129.80 (129.50 to 130.50): V
 Ion 94.90 (94.60 to 95.60): VX0

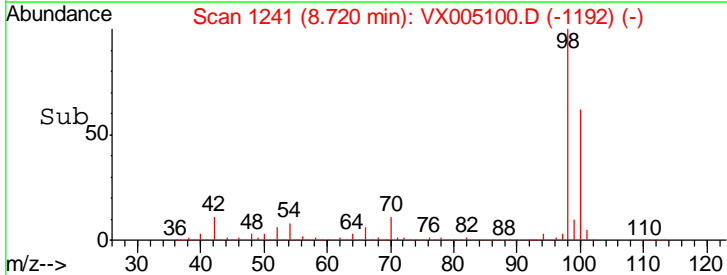
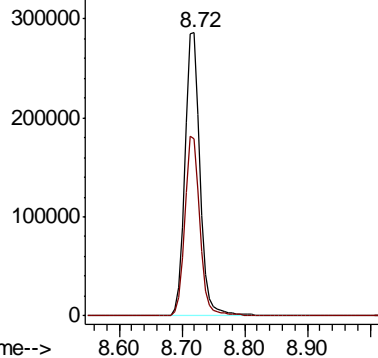


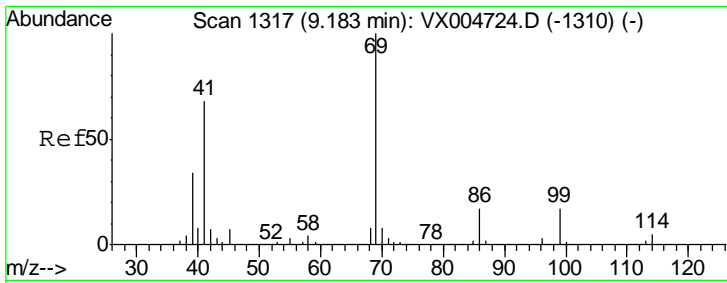
#50
 Toluene-d8
 Concen: 51.779 ug/l
 RT: 8.72 min Scan# 1241
 Delta R.T. 0.00 min
 Lab File: VX005100.D
 Acq: 06 Oct 2018 07:19

Tgt Ion: 98 Resp: 477363
 Ion Ratio Lower Upper
 98 100
 100 63.2 51.9 77.9



Abundance Ion 98.00 (97.70 to 98.70): VX0
 Ion 100.00 (99.70 to 100.70): V

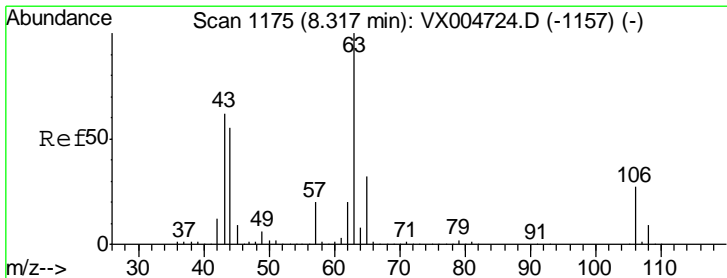
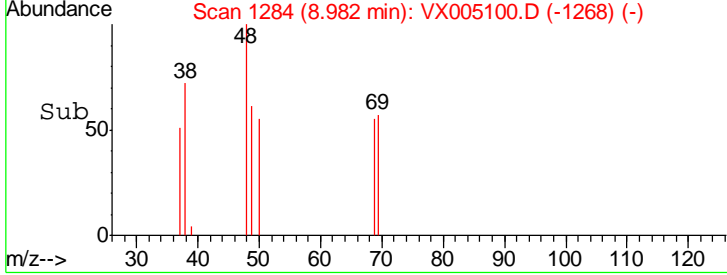
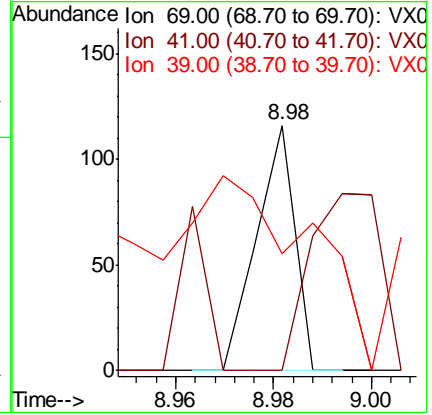
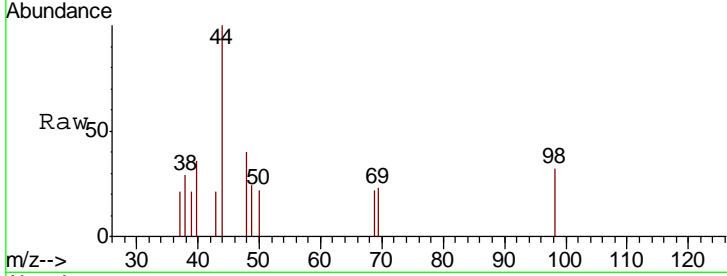




#56
 Ethyl methacrylate
 Concen: 2.875 ug/l
 RT: 8.98 min Scan# 1284
 Delta R.T. -0.20 min
 Lab File: VX005100.D
 Acq: 06 Oct 2018 07:19

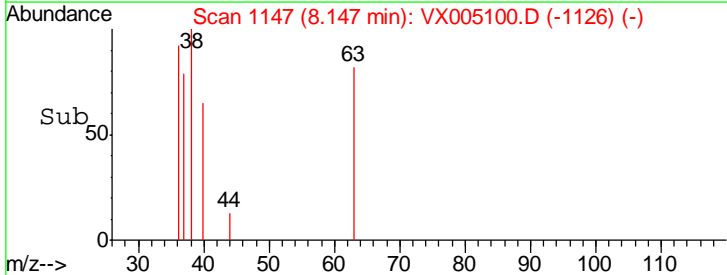
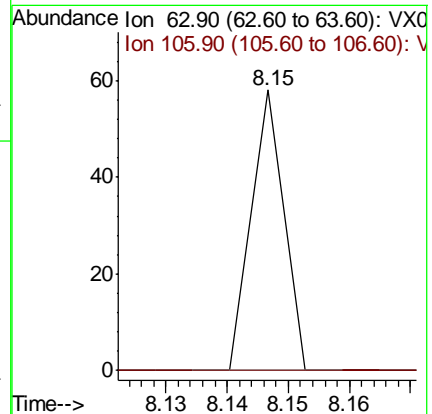
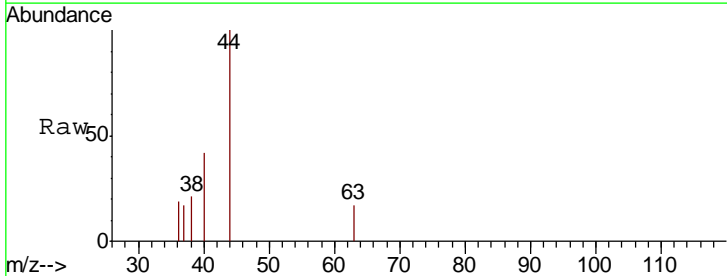
Instrument :
 MSVOA_X
 ClientSampled :
 FA18-QBC6

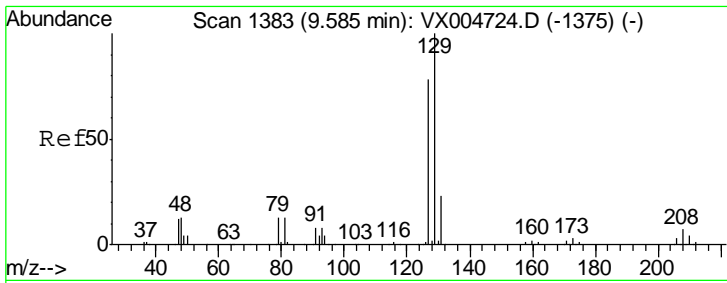
Tgt Ion	Resp	Lower	Upper
69	100		
41	133.3	56.9	85.3#
39	0.0	28.4	42.6#



#58
 2-Chloroethyl Vinyl ether
 Concen: 14.250 ug/l
 RT: 8.15 min Scan# 1147
 Delta R.T. -0.17 min
 Lab File: VX005100.D
 Acq: 06 Oct 2018 07:19

Tgt Ion	Resp	Lower	Upper
63	100		
106	0.0	21.0	31.6#

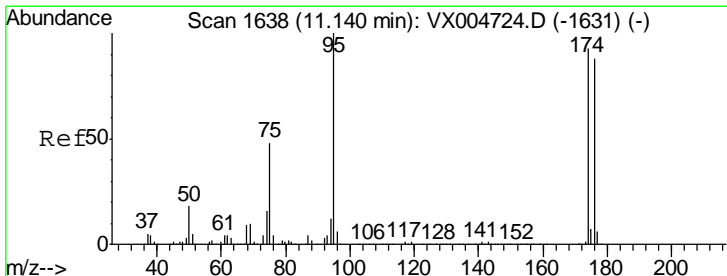
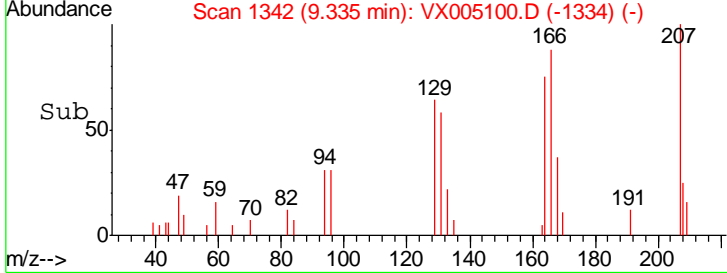
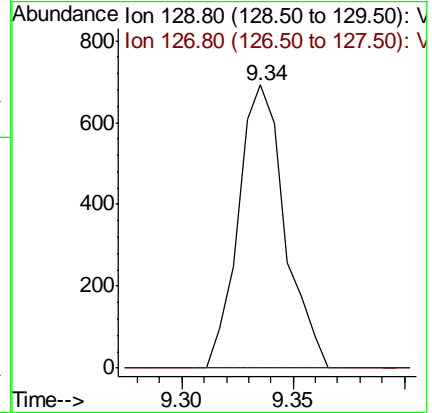
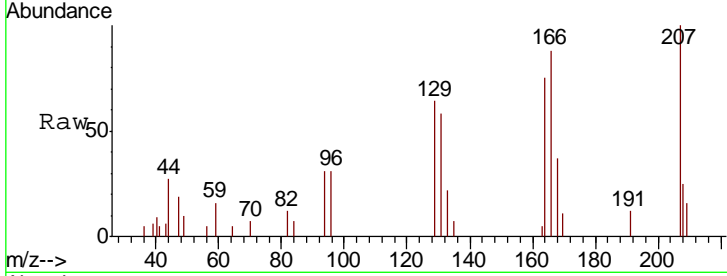




#60
 Dibromochloromethane
 Concen: 0.353 ug/l
 RT: 9.34 min Scan# 1342
 Delta R.T. -0.25 min
 Lab File: VX005100.D
 Acq: 06 Oct 2018 07:19

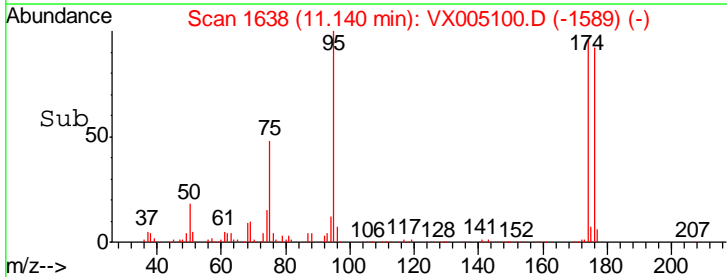
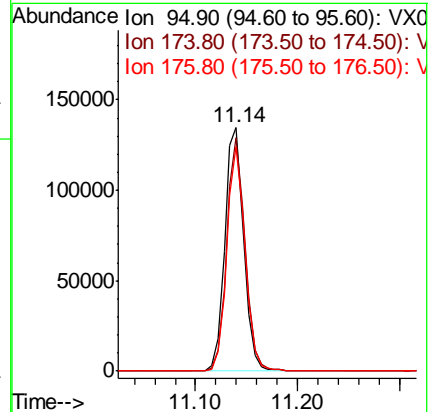
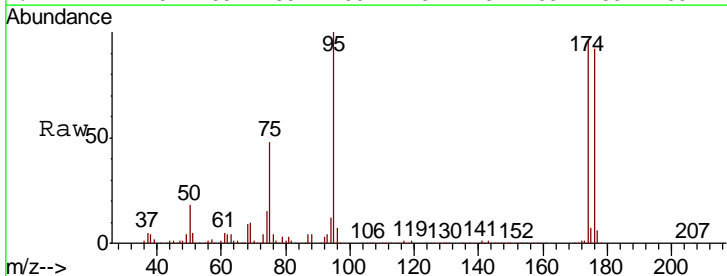
Instrument :
 MSVOA_X
 ClientSampled :
 FA18-QBC6

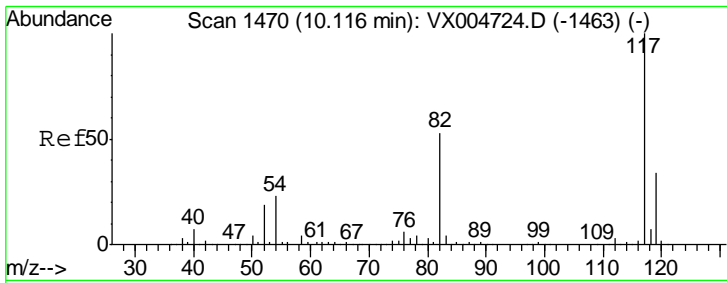
Tgt Ion: 129 Resp: 1006
 Ion Ratio Lower Upper
 129 100
 127 0.0 39.1 117.2#



#62
 4-Bromofluorobenzene
 Concen: 52.637 ug/l
 RT: 11.14 min Scan# 1638
 Delta R.T. 0.00 min
 Lab File: VX005100.D
 Acq: 06 Oct 2018 07:19

Tgt Ion: 95 Resp: 174822
 Ion Ratio Lower Upper
 95 100
 174 92.8 0.0 185.0
 176 88.6 0.0 180.2

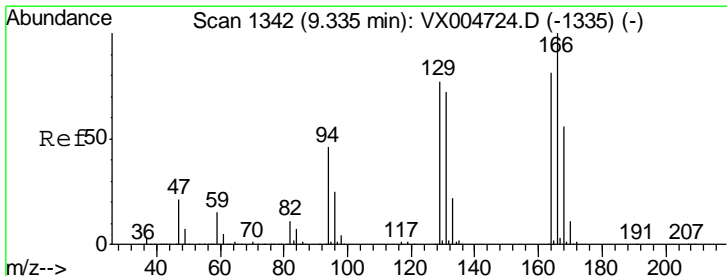
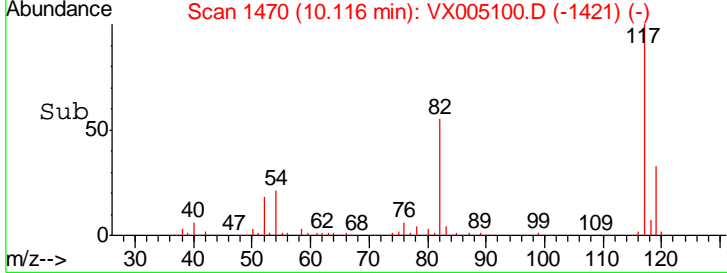
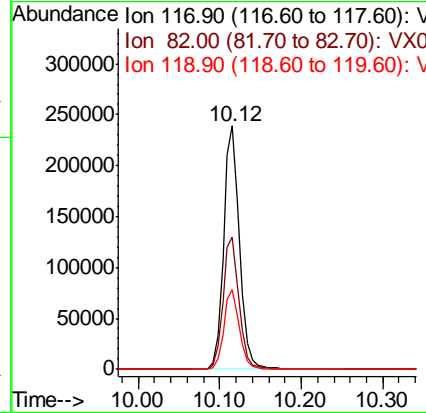
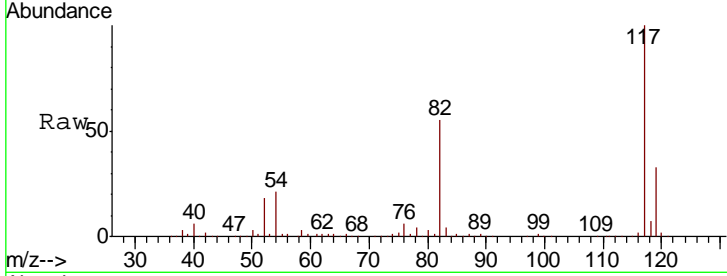




#63
 Chlorobenzene-d5
 Concen: 50.000 ug/l
 RT: 10.12 min Scan# 1470
 Delta R.T. 0.00 min
 Lab File: VX005100.D
 Acq: 06 Oct 2018 07:19

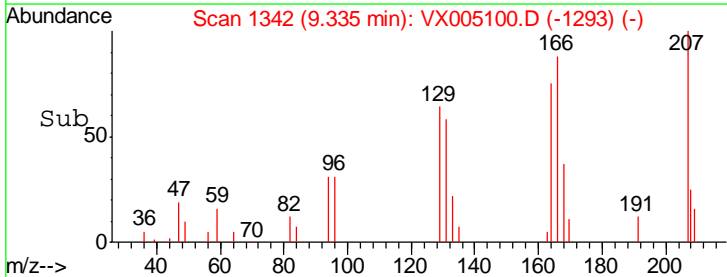
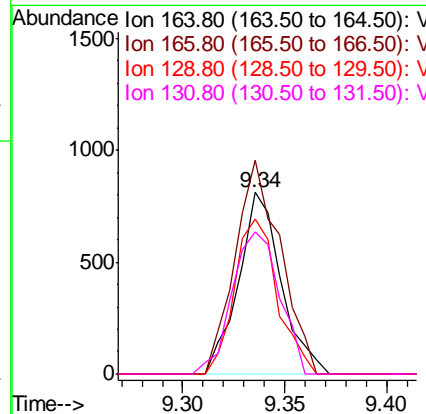
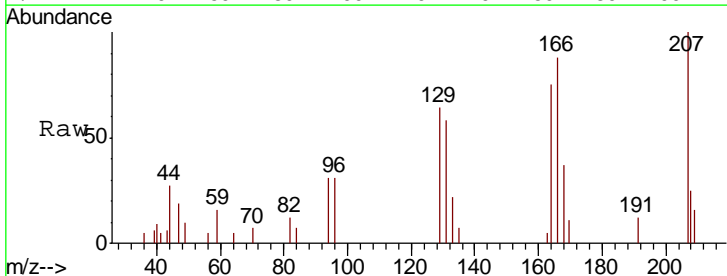
Instrument :
 MSVOA_X
 ClientSampled :
 FA18-QBC6

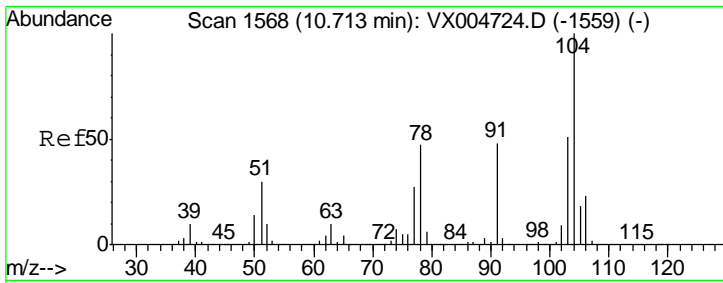
Tgt Ion	Resp	Lower	Upper
117	100		
82	54.6	42.2	63.4
119	32.7	27.4	41.0



#64
 Tetrachloroethene
 Concen: 0.367 ug/l
 RT: 9.34 min Scan# 1342
 Delta R.T. 0.00 min
 Lab File: VX005100.D
 Acq: 06 Oct 2018 07:19

Tgt Ion	Resp	Lower	Upper
164	100		
166	117.6	98.4	147.6
129	85.2	76.1	114.1
131	78.0	71.0	106.4

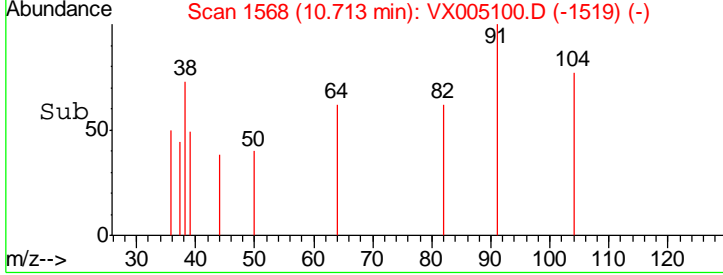
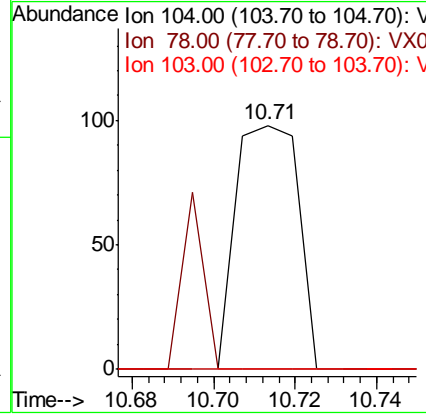
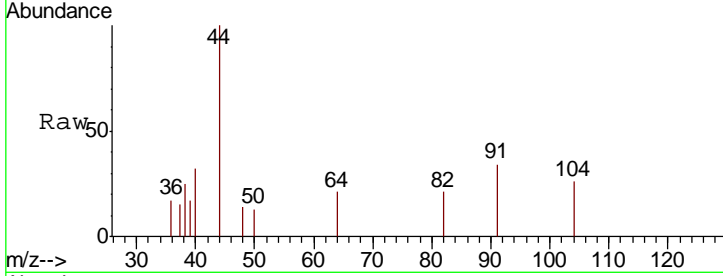




#70
 Styrene
 Concen: 2.152 ug/l
 RT: 10.71 min Scan# 1568
 Delta R.T. 0.00 min
 Lab File: VX005100.D
 Acq: 06 Oct 2018 07:19

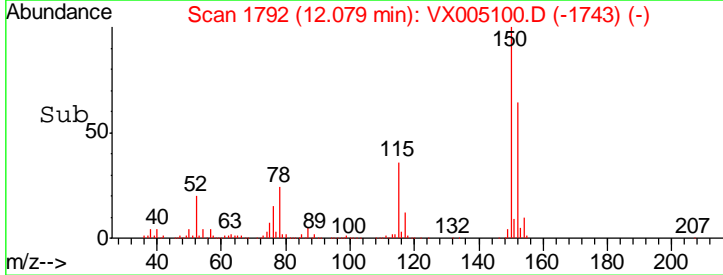
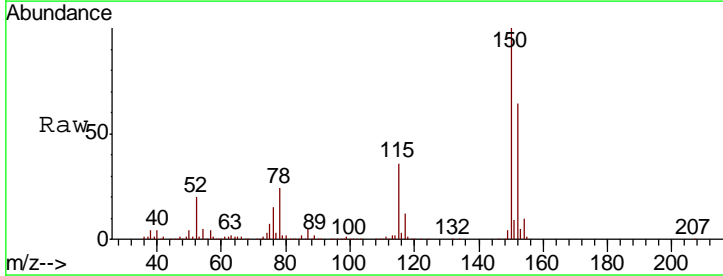
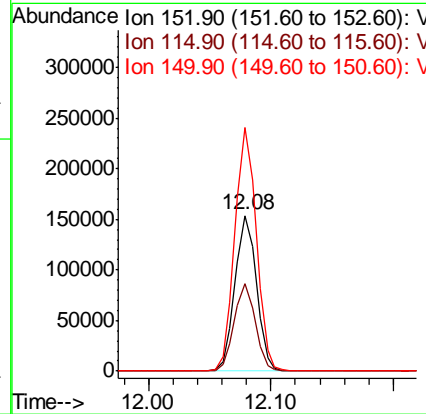
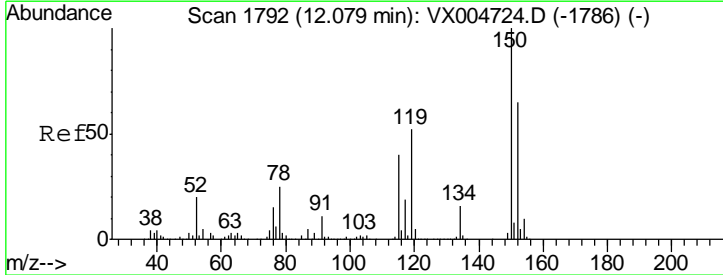
Instrument : MSVOA_X
 ClientSampled : FA18-QBC6

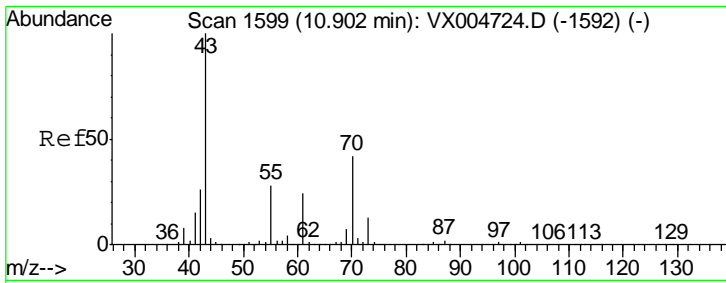
Tgt Ion	Resp	Lower	Upper
104	105		
78	24.8	40.0	60.0#
103	0.0	44.3	66.5#



#72
 1,4-Dichlorobenzene-d4
 Concen: 50.000 ug/l
 RT: 12.08 min Scan# 1792
 Delta R.T. 0.00 min
 Lab File: VX005100.D
 Acq: 06 Oct 2018 07:19

Tgt Ion	Resp	Lower	Upper
152	185859		
152	100		
115	55.4	40.2	120.6
150	156.2	0.0	351.0

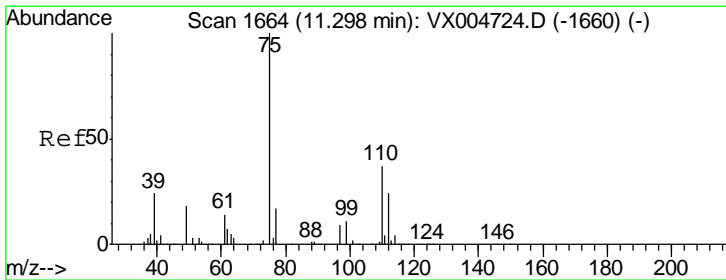
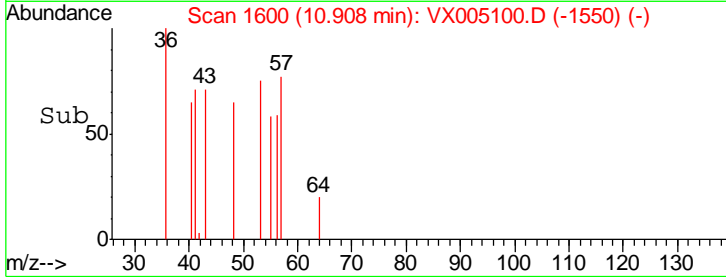
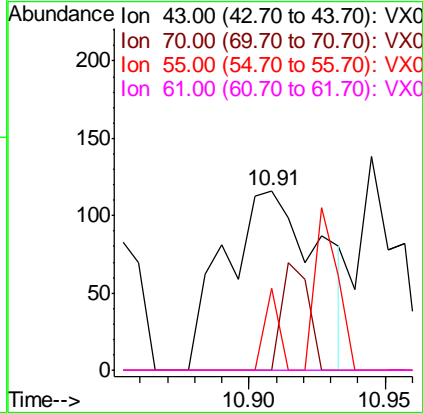
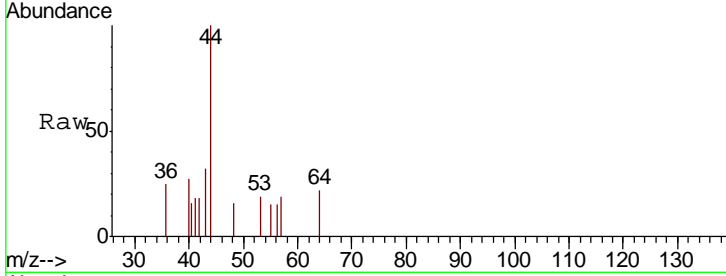




#74
 N-amyl acetate
 Concen: 1.790 ug/l
 RT: 10.91 min Scan# 1600
 Delta R.T. 0.01 min
 Lab File: VX005100.D
 Acq: 06 Oct 2018 07:19

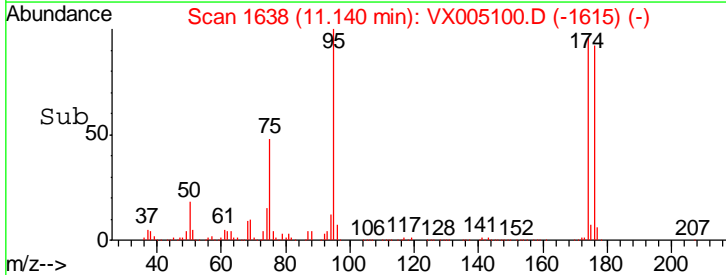
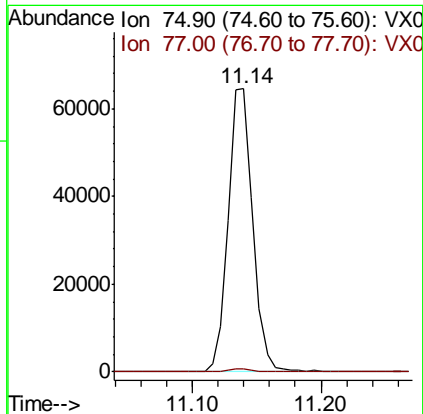
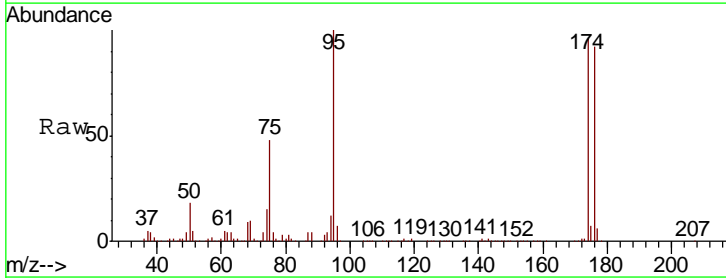
Instrument :
 MSVOA_X
 ClientSampled :
 FA18-QBC6

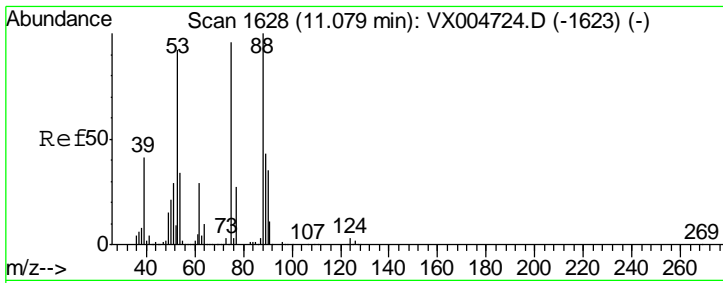
Tgt Ion	Resp	Lower	Upper
43	100		
70	16.7	32.6	48.8#
55	6.8	21.6	32.4#
61	0.0	19.1	28.7#



#76
 1,2,3-Trichloropropane
 Concen: 20.849 ug/l
 RT: 11.14 min Scan# 1638
 Delta R.T. -0.16 min
 Lab File: VX005100.D
 Acq: 06 Oct 2018 07:19

Tgt Ion	Resp	Lower	Upper
75	100		
77	1.3	21.4	64.3#

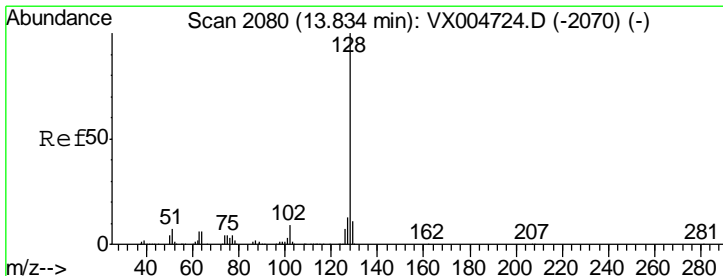
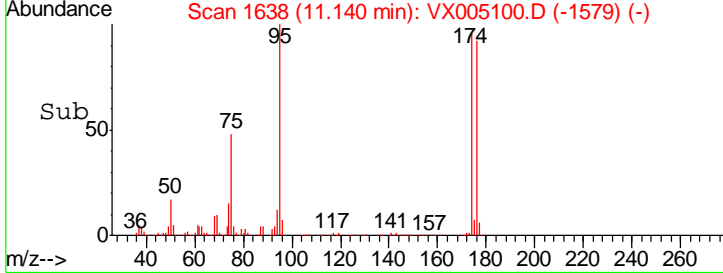
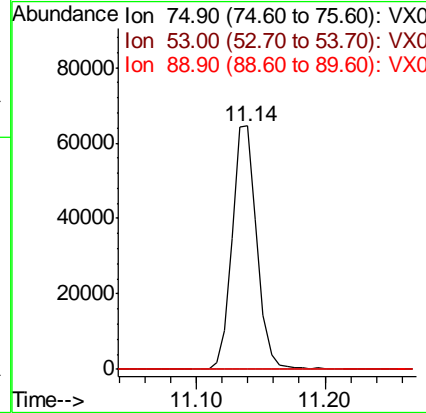
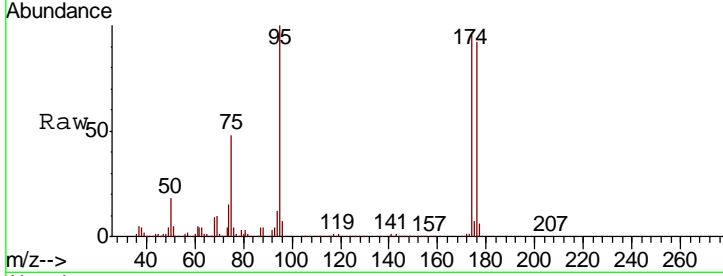




#81
 trans-1,4-Dichloro-2-butene
 Concen: 56.591 ug/l
 RT: 11.14 min Scan# 1638
 Delta R.T. 0.06 min
 Lab File: VX005100.D
 Acq: 06 Oct 2018 07:19

Instrument : MSVOA_X
 ClientSampled : FA18-QBC6

Tgt Ion	Resp	Lower	Upper
75	100		
53	0.3	80.2	120.4#
89	0.0	37.1	55.7#



#95
 Naphthalene
 Concen: 0.786 ug/l
 RT: 13.83 min Scan# 2080
 Delta R.T. 0.00 min
 Lab File: VX005100.D
 Acq: 06 Oct 2018 07:19

Tgt Ion	Resp	Lower	Upper
128	100		
127	18.2	10.4	15.6#
129	8.9	8.7	13.1

