

Data Path : Z:\VOASRV\HPCHEM1\MSVOA X\DATA\VX100518\
 Data File : VX005099.D
 Acq On : 06 Oct 2018 06:52
 Operator : JC/MD
 Sample : J5259-05
 Misc : 5.0mL/MSVOA X/WATER
 ALS Vial : 34 Sample Multiplier: 1

Instrument :
 MSVOA_X
 ClientSampleId :
 FA18-QBC1

Integration Parameters: RTEINT.P
 Integrator: RTE
 Smoothing : ON
 Sampling : 1
 Start Thrs: 0.2
 Stop Thrs : 0

Filtering: 5
 Min Area: 3 % of largest Peak
 Max Peaks: 100
 Peak Location: TOP

If leading or trailing edge < 100 prefer < Baseline drop else tangent >
 Peak separation: 5

Method : Z:\VOASRV\HPCHEM1\MSVOA_X\METHOD\82X092618W.M
 Title : SW846 8260

Signal : TIC

peak #	R.T. min	first scan	max scan	last scan	PK TY	peak height	corr. area	corr. % max.	% of total
1	1.404	38	41	51	rVB	1535367	1576390	9.36%	5.762%
2	4.598	551	565	597	rBV2	6179481	16835267	100.00%	61.541%
3	5.507	700	714	728	rBV2	169261	503571	2.99%	1.841%
4	5.665	729	740	759	rVV3	213077	617309	3.67%	2.257%
5	6.068	795	806	813	rBV	183481	474199	2.82%	1.733%
6	6.141	813	818	833	rVB2	85674	230570	1.37%	0.843%
7	6.860	925	936	961	rBV	306534	775623	4.61%	2.835%
8	7.214	984	994	1007	rBV2	122663	265638	1.58%	0.971%
9	8.720	1234	1241	1248	rBV	734725	1197847	7.12%	4.379%
10	9.335	1335	1342	1360	rBV	574210	864487	5.13%	3.160%
11	10.116	1463	1470	1485	rBV2	697857	1092193	6.49%	3.992%
12	11.140	1632	1638	1653	rBV	712306	891777	5.30%	3.260%
13	12.079	1787	1792	1799	rBV	908111	1100189	6.54%	4.022%
14	13.834	2073	2080	2086	rBV	141592	180642	1.07%	0.660%
15	14.700	2215	2222	2227	rBV	207332	271171	1.61%	0.991%
16	14.840	2239	2245	2254	rBV	395207	479282	2.85%	1.752%

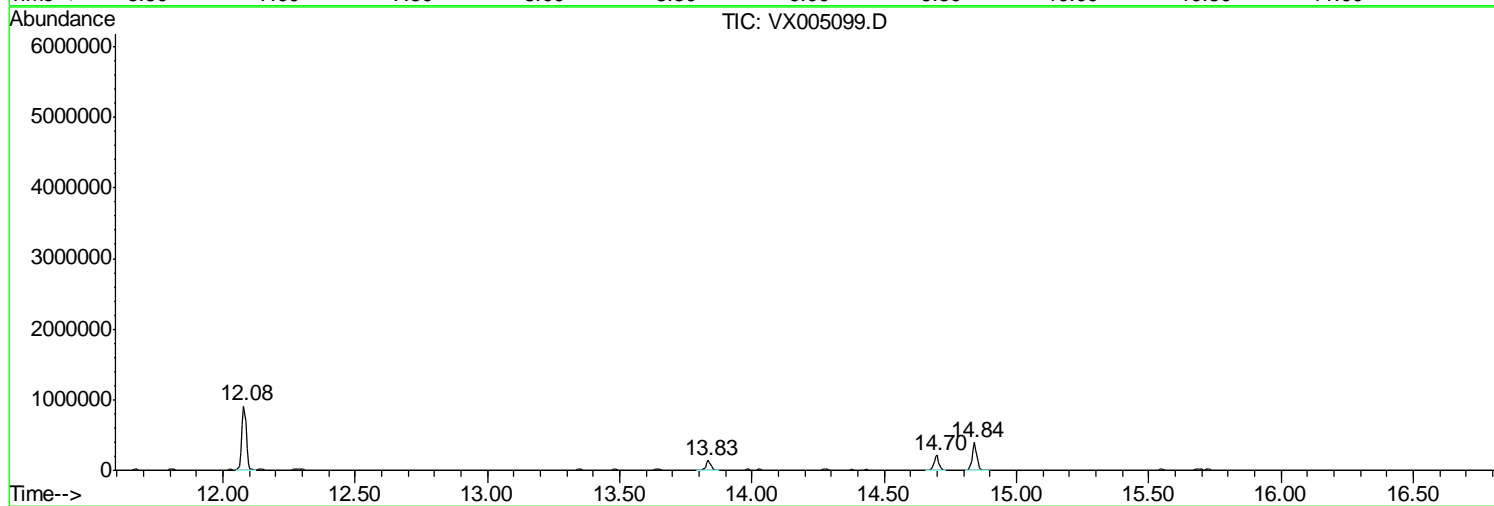
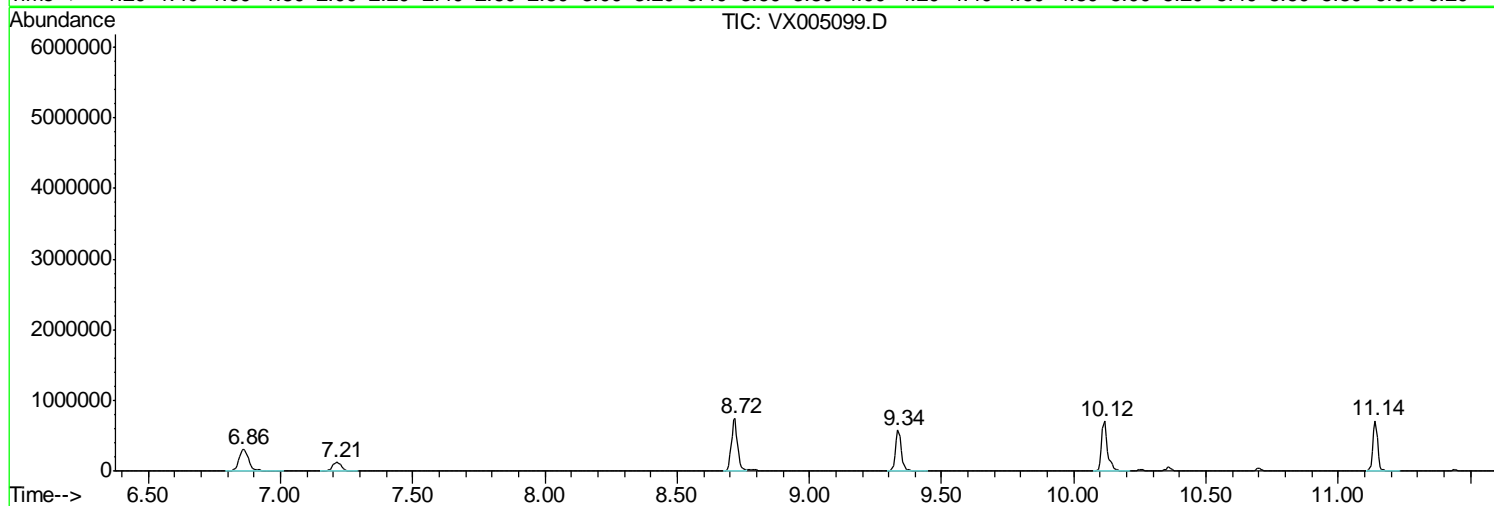
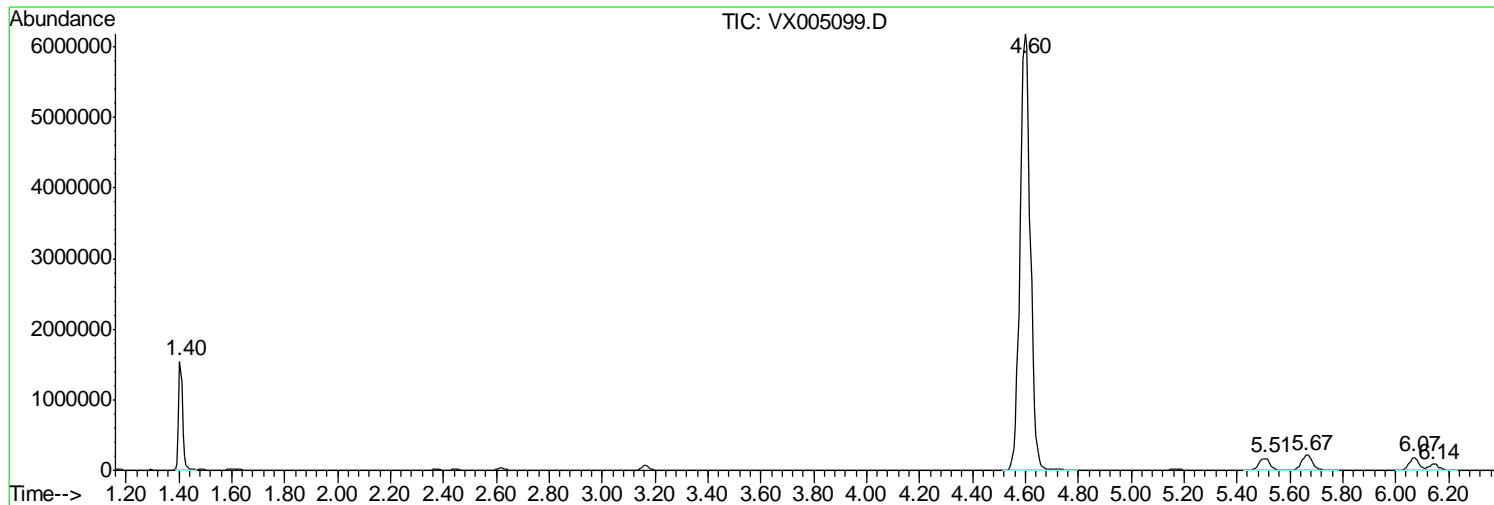
Sum of corrected areas: 27356155

Data Path : Z:\VOASRV\HPCHEM1\MSVOA X\DATA\VX100518\
Data File : VX005099.D
Acq On : 06 Oct 2018 06:52
Operator : JC/MD
Sample : J5259-05
Misc : 5.0mL/MSVOA X/WATER
ALS Vial : 34 Sample Multiplier: 1

Instrument :
MSVOA_X
ClientSampled :
FA18-QBC1

Quant Method : Z:\VOASRV\HPCHEM1\MSVOA_X\METHOD\82X092618W.M
Quant Title : SW846 8260

TIC Library : C:\DATABASE\NIST11.L
TIC Integration Parameters: LSCINT.P



Data Path : Z:\VOASRV\HPCHEM1\MSVOA X\DATA\VX100518\
 Data File : VX005099.D
 Acq On : 06 Oct 2018 06:52
 Operator : JC/MD
 Sample : J5259-05
 Misc : 5.0mL/MSVOA X/WATER
 ALS Vial : 34 Sample Multiplier: 1

Instrument :
 MSVOA_X
 ClientSampled :
 FA18-QBC1

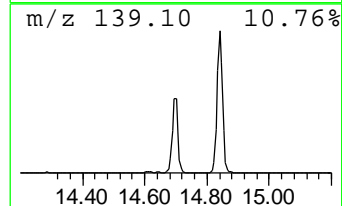
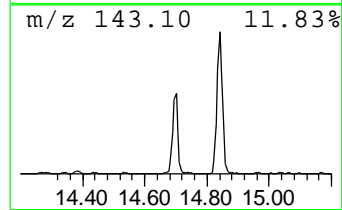
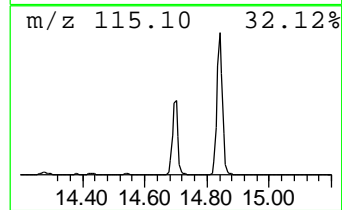
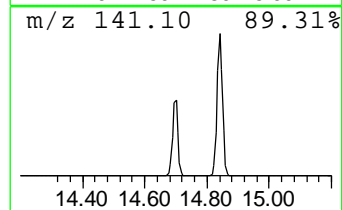
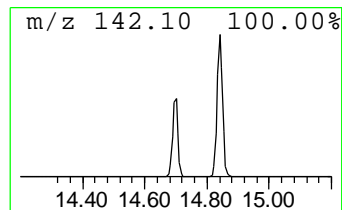
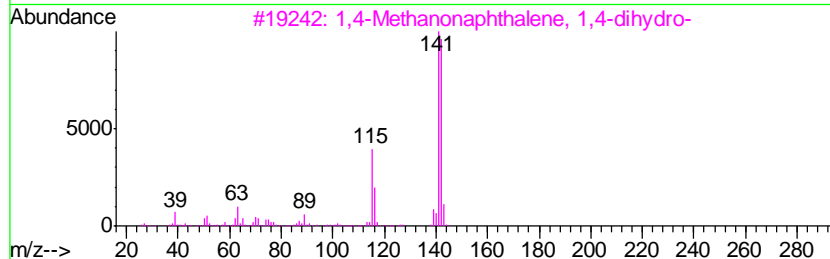
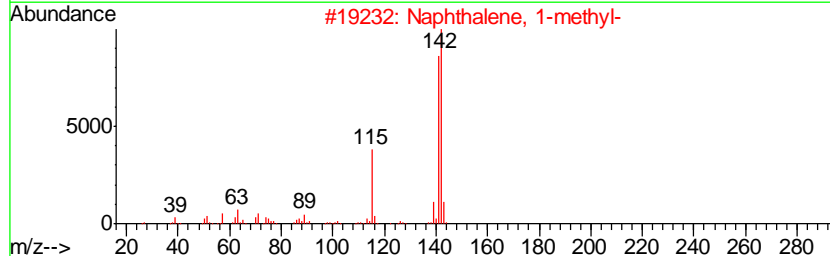
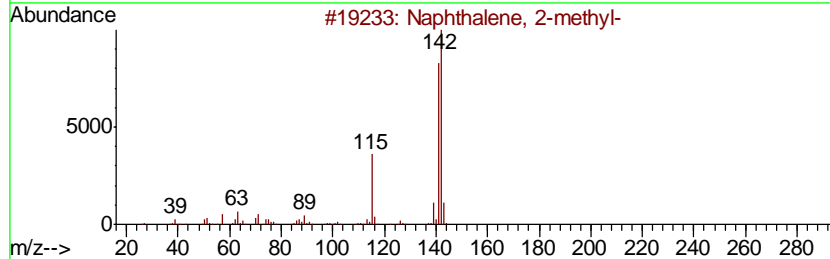
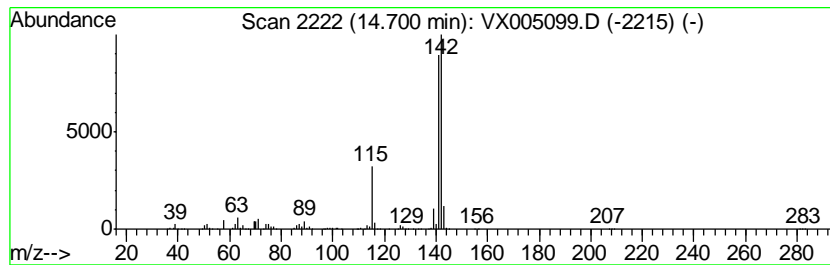
Quant Method : Z:\VOASRV\HPCHEM1\MSVOA_X\METHOD\82X092618W.M
 Quant Title : SW846 8260

TIC Library : C:\DATABASE\NIST11.L
 TIC Integration Parameters: LSCINT.P

 Peak Number 1 Naphthalene, 1-methyl- Concentration Rank 2

R.T.	EstConc	Area	Relative to ISTD	R.T.
14.70	12.32 ug/l	271171	1,4-Dichlorobenzene-d4	12.08

Hit#	of	Tentative ID	MW	MolForm	CAS#	Qual
1	5	Naphthalene, 2-methyl-	142	C11H10	000091-57-6	96
2		Naphthalene, 1-methyl-	142	C11H10	000090-12-0	96
3		1,4-Methanonaphthalene, 1,4-dihy...	142	C11H10	004453-90-1	91
4		Benzocycloheptatriene	142	C11H10	000264-09-5	91
5		Bicyclo[4.4.1]undeca-1,3,5,7,9-p...	142	C11H10	002443-46-1	87



Data Path : Z:\VOASRV\HPCHEM1\MSVOA_X\DATA\VX100518\
Data File : VX005099.D
Acq On : 06 Oct 2018 06:52
Operator : JC/MD
Sample : J5259-05
Misc : 5.0mL/MSVOA_X/WATER
ALS Vial : 34 Sample Multiplier: 1

Instrument :
MSVOA_X
ClientSampleId :
FA18-QBC1

Quant Method : Z:\VOASRV\HPCHEM1\MSVOA_X\METHOD\82X092618W.M
Quant Title : SW846 8260

TIC Library : C:\DATABASE\NIST11.L
TIC Integration Parameters: LSCINT.P

TIC Top Hit name	RT	EstConc	Units	Response	--Internal Standard--			
					#	RT	Resp	Conc
Naphthalene, 1-me...	14.70	12.3	ug/l	271171	4	12.08	1100190	50.0