

Data Path : Z:\voasrv\HPCHEM1\MSVOA_X\Data\VX100523\
 Data File : VX038098.D
 Acq On : 05 Oct 2023 13:27
 Operator : JC/MD
 Sample : VX1005MBL01
 Misc : 5.0g/10mL/100uL/5.00mL/MSVOA_X/MEOH
 ALS Vial : 11 Sample Multiplier: 1

Instrument :
 MSVOA_X
 ClientSampleId :
 VX1005MBL01

Quant Time: Oct 05 15:35:08 2023
 Quant Method : Z:\voasrv\HPCHEM1\MSVOA_X\Method\82X100523W.M
 Quant Title : SW846 8260
 QLast Update : Thu Oct 05 15:27:13 2023
 Response via : Initial Calibration

Compound	R.T.	QIon	Response	Conc	Units	Dev(Min)

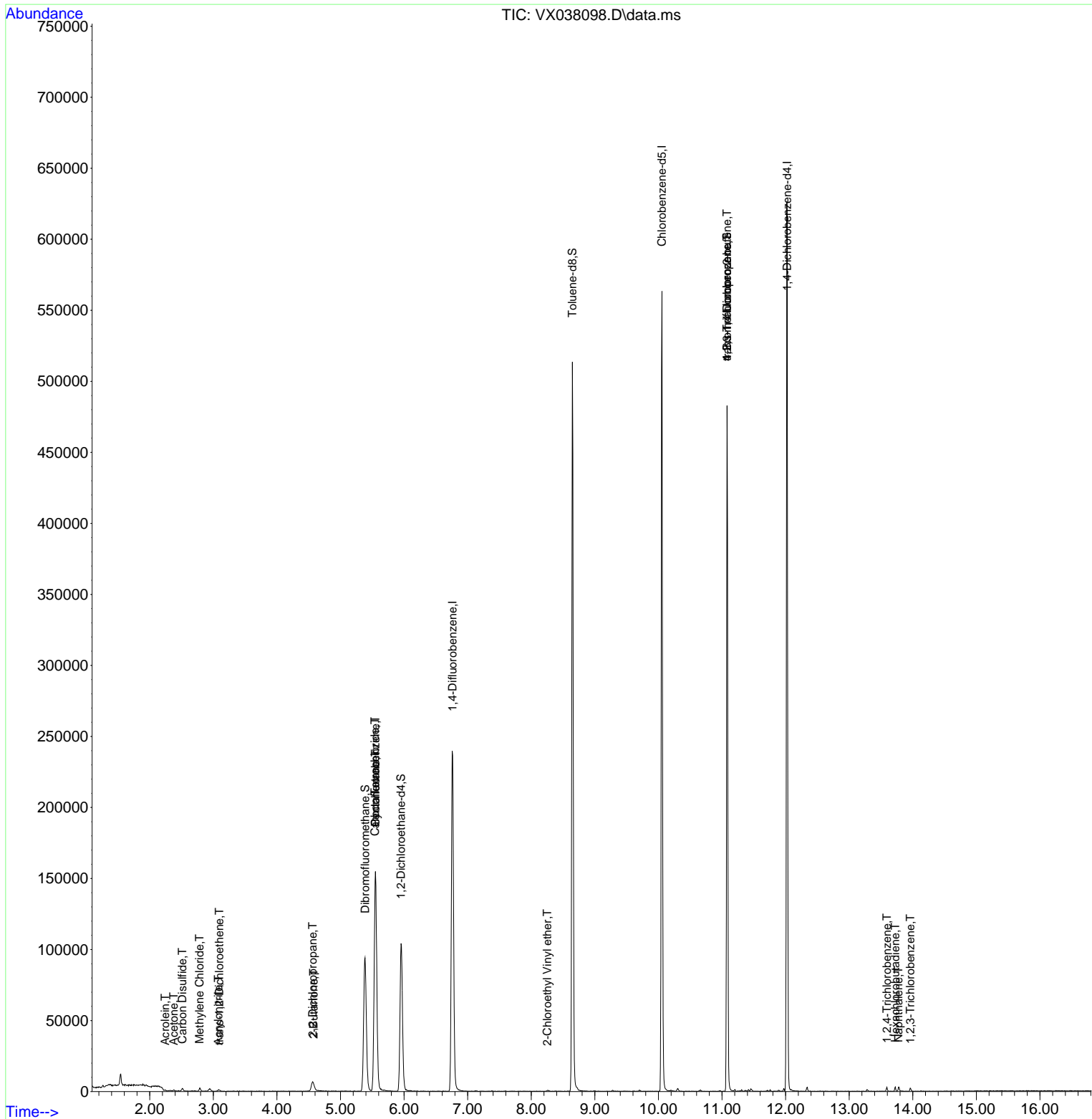
Internal Standards						
1) Pentafluorobenzene	5.550	168	144203	50.000	ug/l	0.00
34) 1,4-Difluorobenzene	6.763	114	250303	50.000	ug/l	0.00
63) Chlorobenzene-d5	10.055	117	242614	50.000	ug/l	0.00
72) 1,4-Dichlorobenzene-d4	12.024	152	126451	50.000	ug/l	0.00
System Monitoring Compounds						
33) 1,2-Dichloroethane-d4	5.952	65	102473	44.181	ug/l	0.00
Spiked Amount	50.000	Range	78 - 117	Recovery	=	88.360%
35) Dibromofluoromethane	5.385	113	81207	45.025	ug/l	0.00
Spiked Amount	50.000	Range	75 - 124	Recovery	=	90.060%
50) Toluene-d8	8.647	98	298628	43.330	ug/l	0.00
Spiked Amount	50.000	Range	92 - 112	Recovery	=	86.660%#
62) 4-Bromofluorobenzene	11.079	95	120562	46.143	ug/l	0.00
Spiked Amount	50.000	Range	83 - 123	Recovery	=	92.280%
Target Compounds						
					Qvalue	
5) Bromomethane	1.630	94	221	Below Cal	#	3
6) Chloroethane	1.673	64	469	Below Cal	#	45
11) Tert butyl alcohol	2.953	59	1219	Below Cal	#	78
13) Acrolein	2.240	56	125	0.379	ug/l #	53
15) Acrylonitrile	3.081	53	473	0.448	ug/l #	81
16) Acetone	2.380	43	661	0.683	ug/l	95
17) Carbon Disulfide	2.514	76	2321	0.610	ug/l #	91
20) Methylene Chloride	2.782	84	992	0.545	ug/l #	76
21) trans-1,2-Dichloroethene	3.093	96	386	0.236	ug/l #	72
25) 2-Butanone	4.574	43	436	0.279	ug/l #	51
26) 2,2-Dichloropropane	4.562	77	516	0.220	ug/l #	54
31) Cyclohexane	5.550	56	3633	1.446	ug/l #	24
38) Carbon Tetrachloride	5.544	117	15773	6.447	ug/l #	15
58) 2-Chloroethyl Vinyl ether	8.251	63	428	0.293	ug/l #	64
76) 1,2,3-Trichloropropane	11.079	75	67195	23.375	ug/l #	38
81) trans-1,4-Dichloro-2-b...	11.079	75	67195	66.780	ug/l #	5
93) 1,2,4-Trichlorobenzene	13.591	180	791	0.295	ug/l	98
94) Hexachlorobutadiene	13.725	225	513	0.475	ug/l	89
95) Naphthalene	13.774	128	2585	0.277	ug/l	99
96) 1,2,3-Trichlorobenzene	13.963	180	706	0.272	ug/l	100

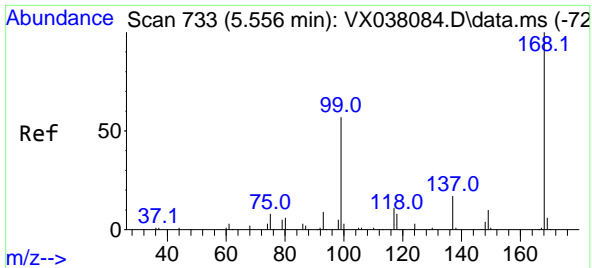
(#) = qualifier out of range (m) = manual integration (+) = signals summed

Data Path : Z:\voasrv\HPCHEM1\MSVOA_X\Data\VX100523\
 Data File : VX038098.D
 Acq On : 05 Oct 2023 13:27
 Operator : JC/MD
 Sample : VX1005MBL01
 Misc : 5.0g/10mL/100uL/5.00mL/MSVOA_X/MEOH
 ALS Vial : 11 Sample Multiplier: 1

Instrument :
 MSVOA_X
 ClientSampleId :
 VX1005MBL01

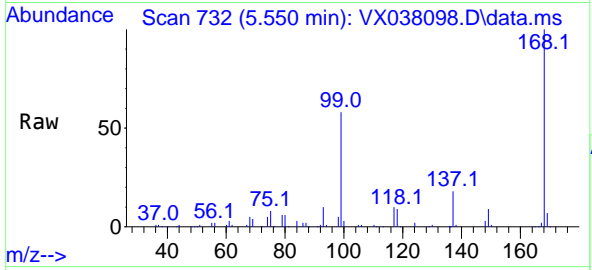
Quant Time: Oct 05 15:35:08 2023
 Quant Method : Z:\voasrv\HPCHEM1\MSVOA_X\Method\82X100523W.M
 Quant Title : SW846 8260
 QLast Update : Thu Oct 05 15:27:13 2023
 Response via : Initial Calibration



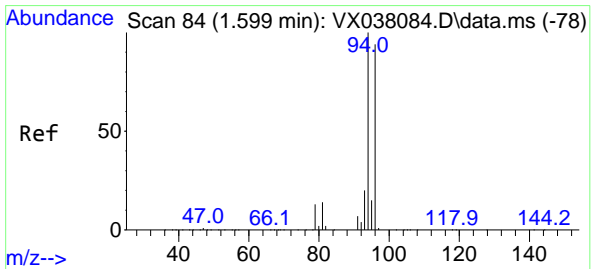
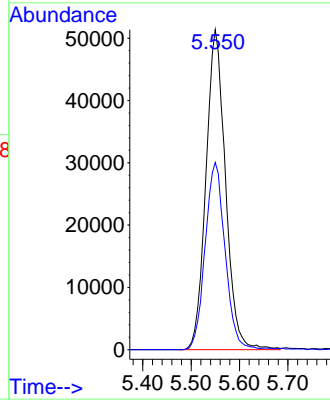
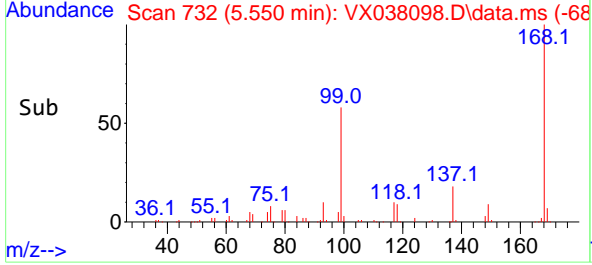


#1
 Pentafluorobenzene
 Concen: 50.000 ug/l
 RT: 5.550 min Scan# 71
 Delta R.T. -0.006 min
 Lab File: VX038098.D
 Acq: 05 Oct 2023 13:27

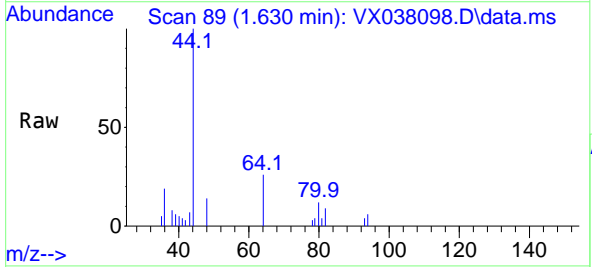
Instrument : MSVOA_X
 ClientSampleId : VX1005MBL01



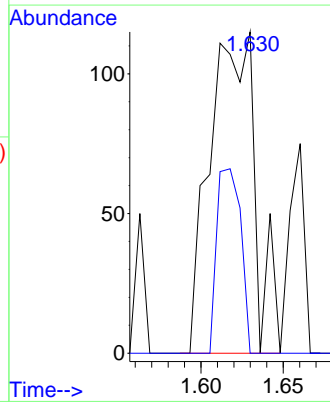
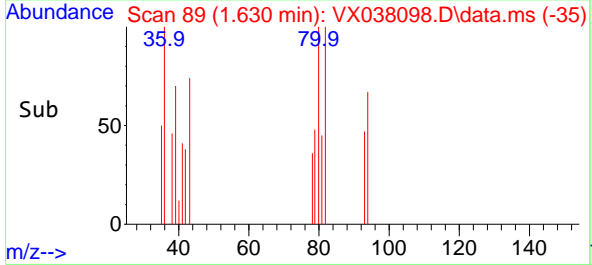
Tgt Ion:168 Resp: 144203
 Ion Ratio Lower Upper
 168 100
 99 58.5 56.6 85.0

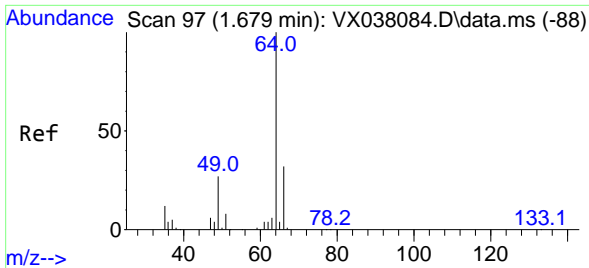


#5
 Bromomethane
 Concen: Below Cal
 RT: 1.630 min Scan# 89
 Delta R.T. 0.031 min
 Lab File: VX038098.D
 Acq: 05 Oct 2023 13:27



Tgt Ion: 94 Resp: 221
 Ion Ratio Lower Upper
 94 100
 96 0.0 74.6 111.8#

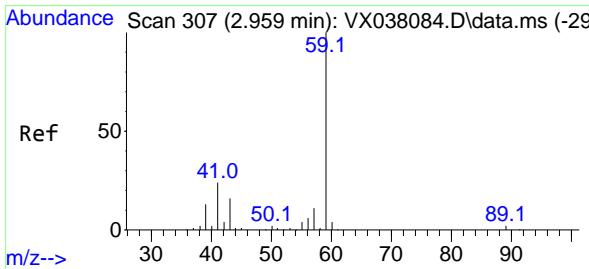
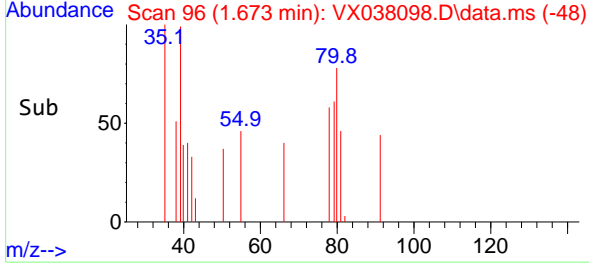
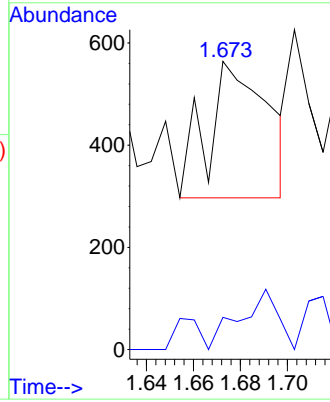
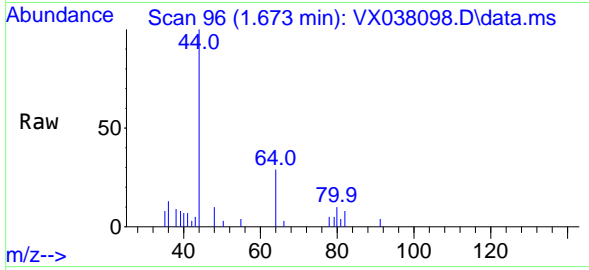




#6
 Chloroethane
 Concen: Below Cal
 RT: 1.673 min Scan# 90
 Delta R.T. -0.006 min
 Lab File: VX038098.D
 Acq: 05 Oct 2023 13:27

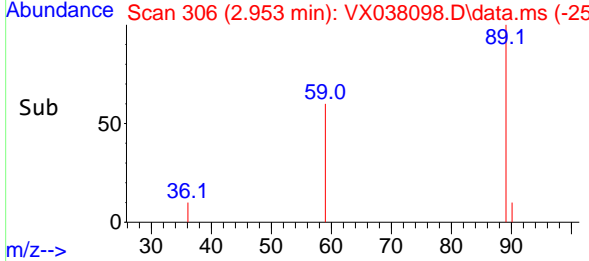
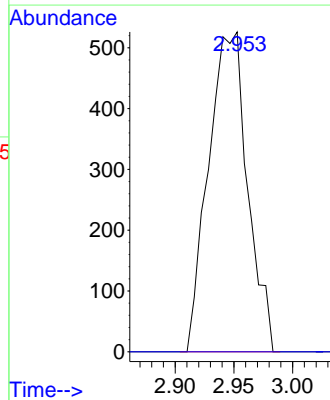
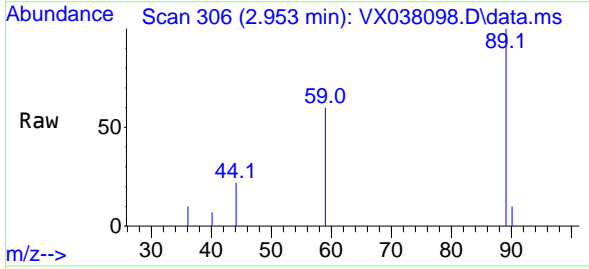
Instrument : MSVOA_X
 ClientSampleId : VX1005MBL01

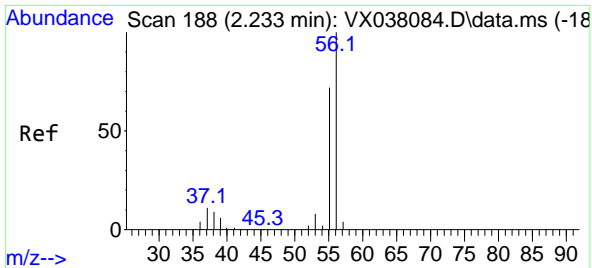
Tgt Ion: 64 Resp: 469
 Ion Ratio Lower Upper
 64 100
 66 1.1 25.1 37.7#



#11
 Tert butyl alcohol
 Concen: Below Cal
 RT: 2.953 min Scan# 306
 Delta R.T. -0.006 min
 Lab File: VX038098.D
 Acq: 05 Oct 2023 13:27

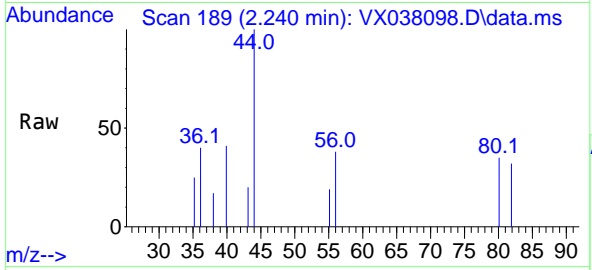
Tgt Ion: 59 Resp: 1219
 Ion Ratio Lower Upper
 59 100
 57 0.0 6.0 9.0#



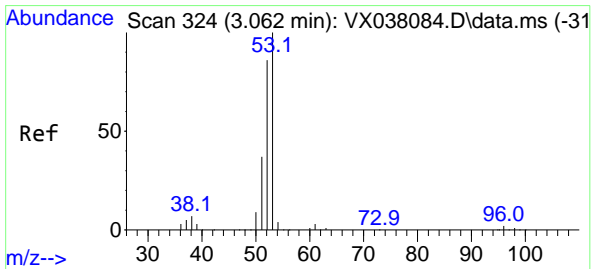
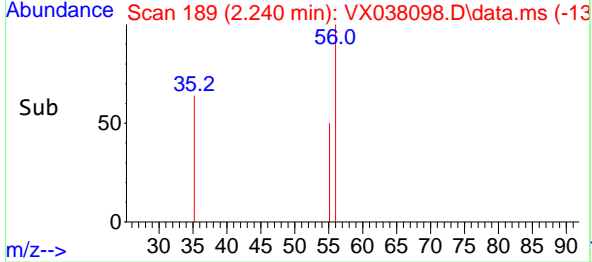
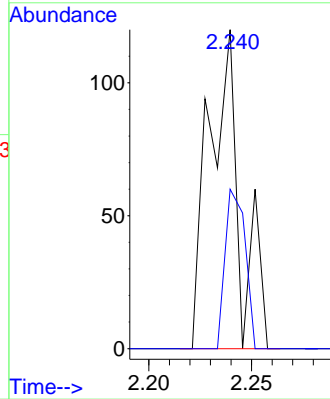


#13
 Acrolein
 Concen: 0.379 ug/l
 RT: 2.240 min Scan# 11
 Delta R.T. 0.006 min
 Lab File: VX038098.D
 Acq: 05 Oct 2023 13:27

Instrument : MSVOA_X
 ClientSampleId : VX1005MBL01

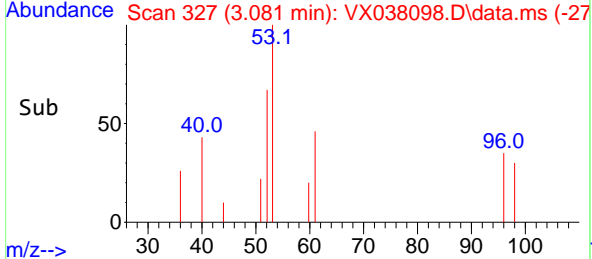
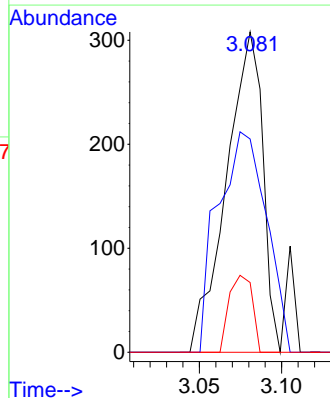
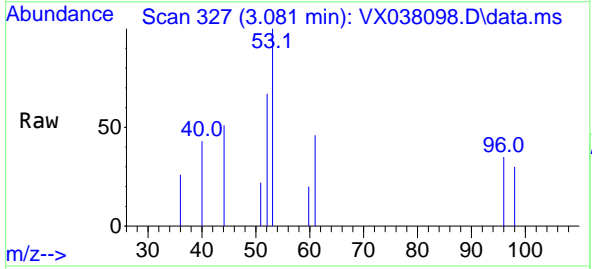


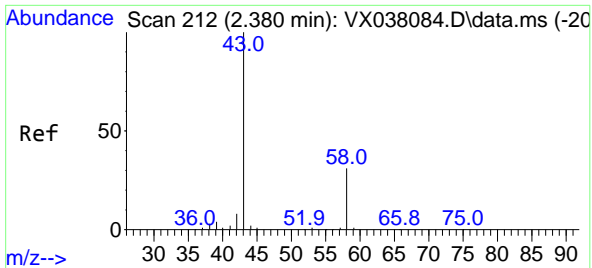
Tgt Ion: 56 Resp: 125
 Ion Ratio Lower Upper
 56 100
 55 32.8 57.1 85.7#



#15
 Acrylonitrile
 Concen: 0.448 ug/l
 RT: 3.081 min Scan# 327
 Delta R.T. 0.019 min
 Lab File: VX038098.D
 Acq: 05 Oct 2023 13:27

Tgt Ion: 53 Resp: 473
 Ion Ratio Lower Upper
 53 100
 52 92.2 66.0 99.0
 51 15.4 29.8 44.6#



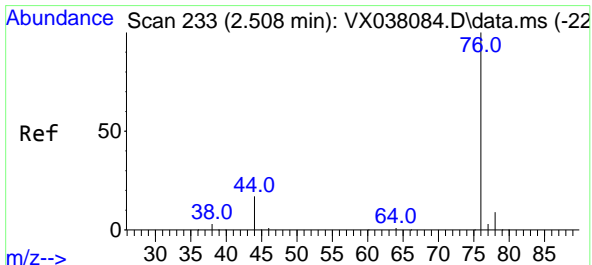
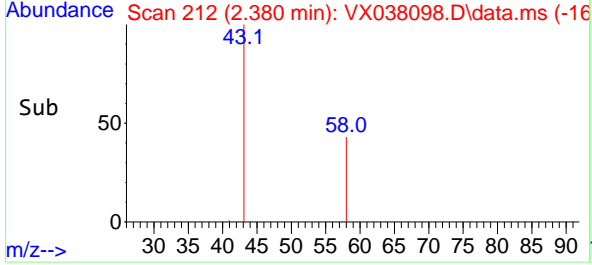
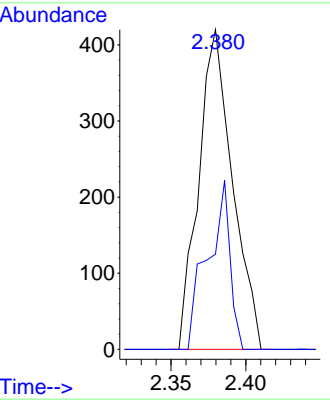
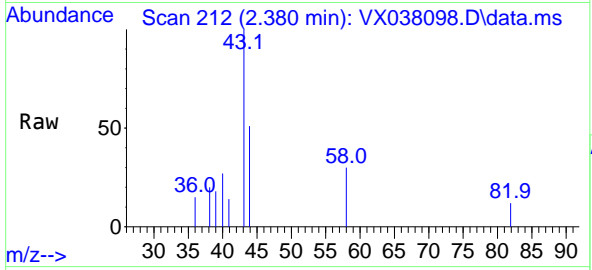


#16
 Acetone
 Concen: 0.683 ug/l
 RT: 2.380 min Scan# 212
 Delta R.T. -0.000 min
 Lab File: VX038098.D
 Acq: 05 Oct 2023 13:27

Instrument : MSVOA_X
 ClientSampleId : VX1005MBL01

Tgt Ion: 43 Resp: 661

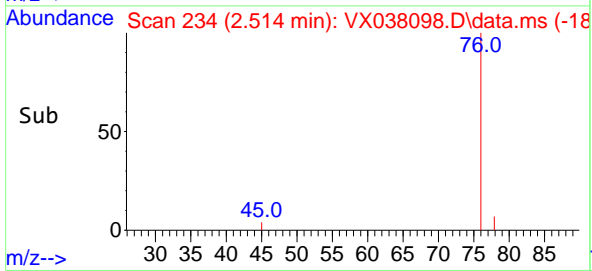
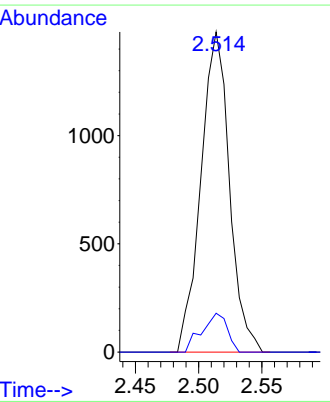
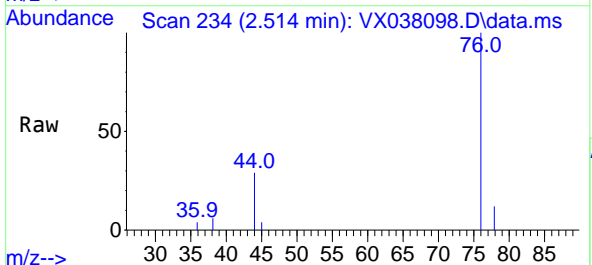
Ion	Ratio	Lower	Upper
43	100		
58	29.8	21.9	32.9

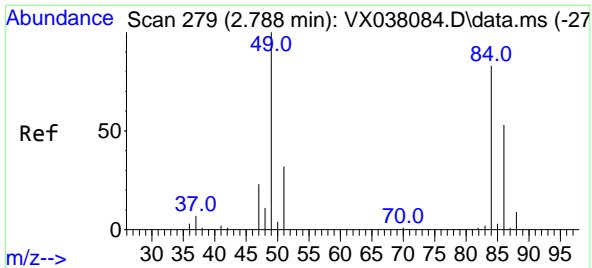


#17
 Carbon Disulfide
 Concen: 0.610 ug/l
 RT: 2.514 min Scan# 234
 Delta R.T. 0.006 min
 Lab File: VX038098.D
 Acq: 05 Oct 2023 13:27

Tgt Ion: 76 Resp: 2321

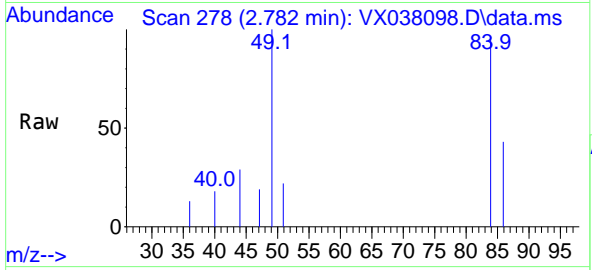
Ion	Ratio	Lower	Upper
76	100		
78	12.1	7.0	10.6





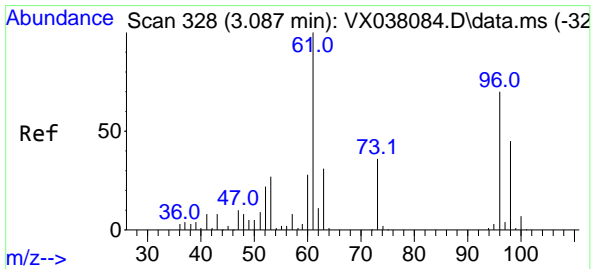
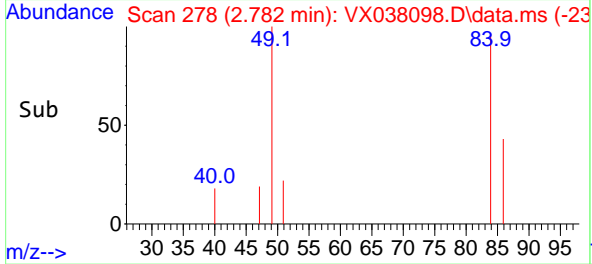
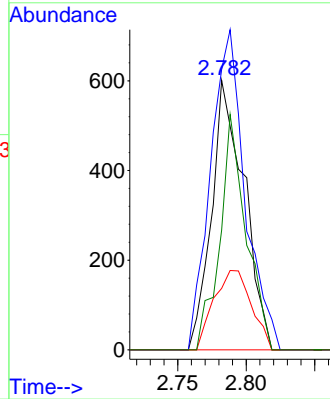
#20
 Methylene Chloride
 Concen: 0.545 ug/l
 RT: 2.782 min Scan# 21
 Delta R.T. -0.006 min
 Lab File: VX038098.D
 Acq: 05 Oct 2023 13:27

Instrument :
 MSVOA_X
 ClientSampleId :
 VX1005MBL01

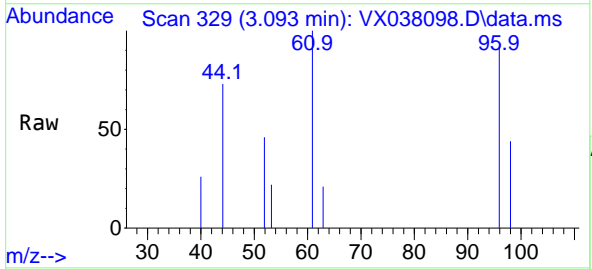


Tgt Ion: 84 Resp: 992

Ion	Ratio	Lower	Upper
84	100		
49	104.0	103.6	155.4
51	22.8	33.8	50.6#
86	44.4	49.4	74.0#

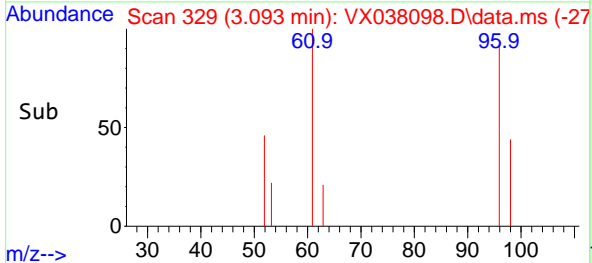
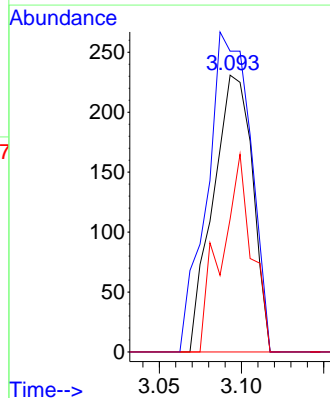


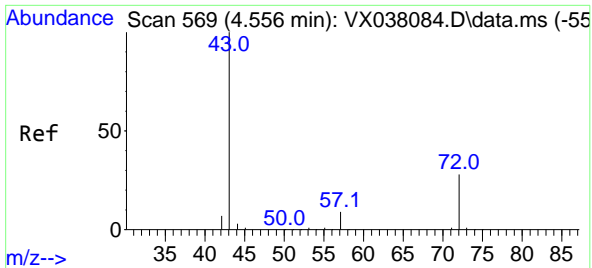
#21
 trans-1,2-Dichloroethene
 Concen: 0.236 ug/l
 RT: 3.093 min Scan# 329
 Delta R.T. 0.006 min
 Lab File: VX038098.D
 Acq: 05 Oct 2023 13:27



Tgt Ion: 96 Resp: 386

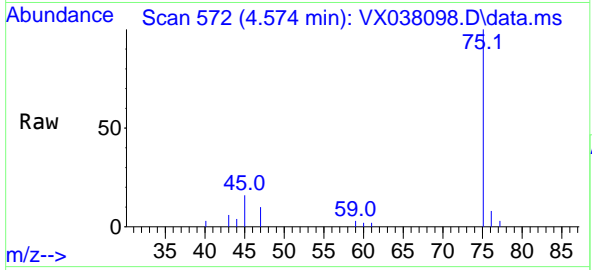
Ion	Ratio	Lower	Upper
96	100		
61	108.7	119.2	178.8#
98	48.1	48.7	73.1#



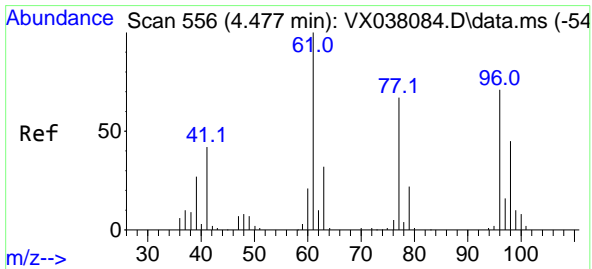
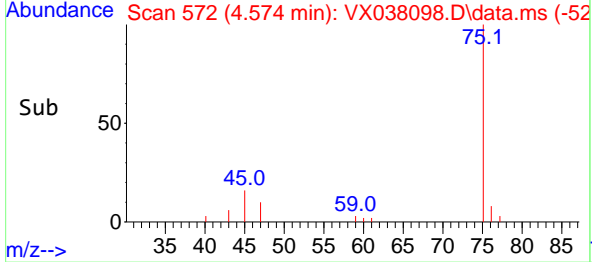
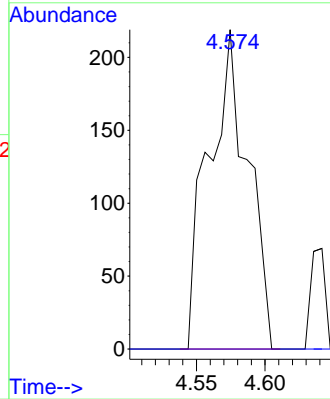


#25
 2-Butanone
 Concen: 0.279 ug/l
 RT: 4.574 min Scan# 51
 Delta R.T. 0.018 min
 Lab File: VX038098.D
 Acq: 05 Oct 2023 13:27

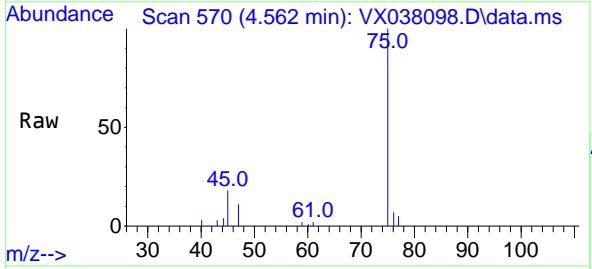
Instrument : MSVOA_X
 ClientSampleId : VX1005MBL01



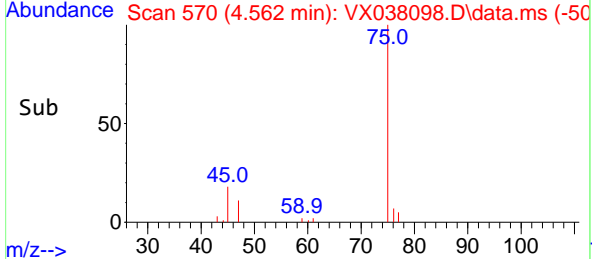
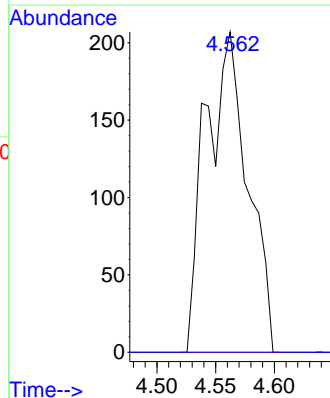
Tgt Ion: 43 Resp: 436
 Ion Ratio Lower Upper
 43 100
 72 0.0 19.4 29.2#

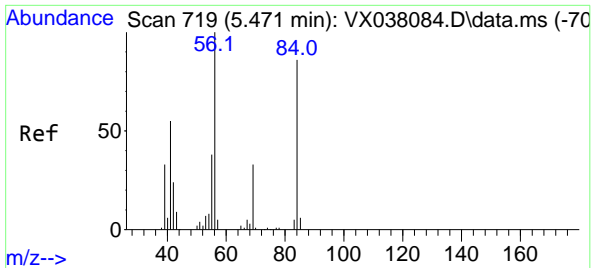


#26
 2,2-Dichloropropane
 Concen: 0.220 ug/l
 RT: 4.562 min Scan# 570
 Delta R.T. 0.085 min
 Lab File: VX038098.D
 Acq: 05 Oct 2023 13:27



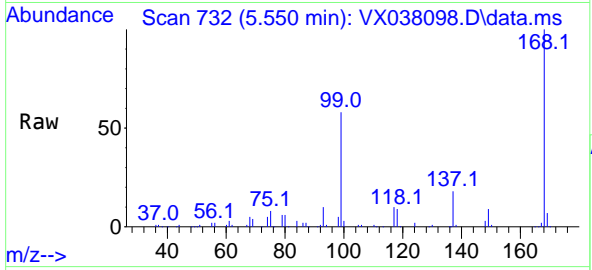
Tgt Ion: 77 Resp: 516
 Ion Ratio Lower Upper
 77 100
 97 0.0 10.8 32.3#



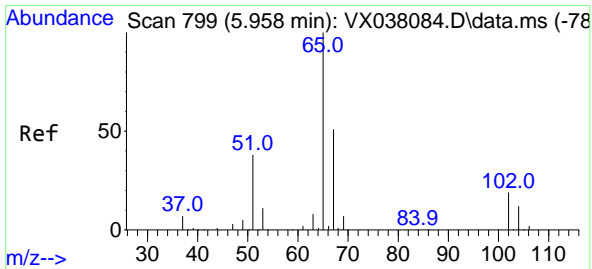
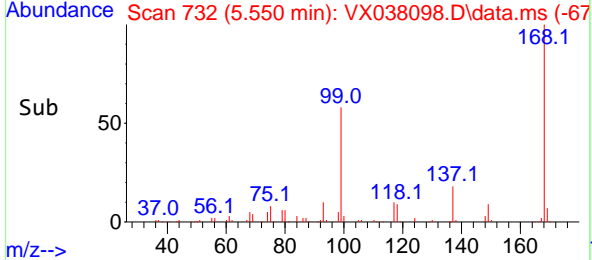
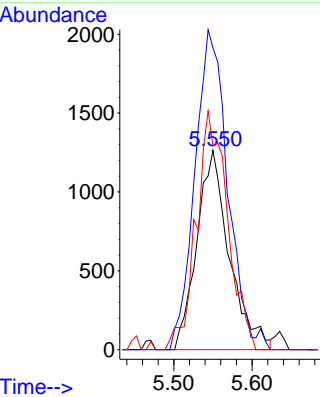


#31
 Cyclohexane
 Concen: 1.446 ug/l
 RT: 5.550 min Scan# 719
 Delta R.T. 0.079 min
 Lab File: VX038098.D
 Acq: 05 Oct 2023 13:27

Instrument : MSVOA_X
 ClientSampleId : VX1005MBL01

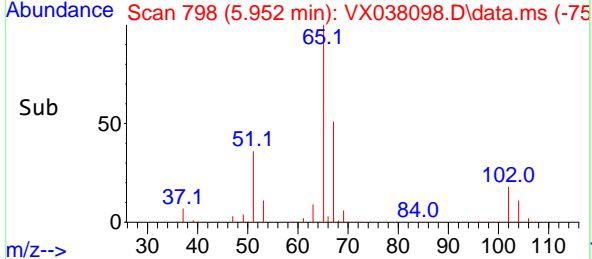
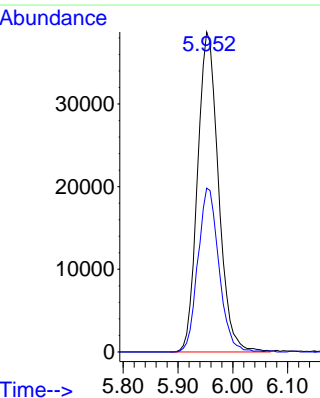
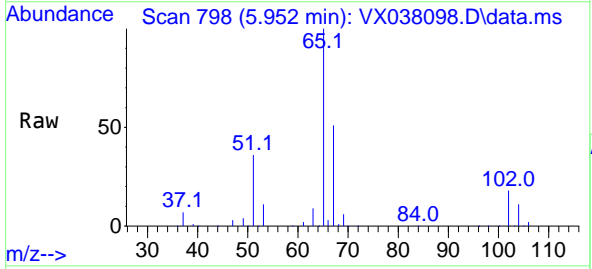


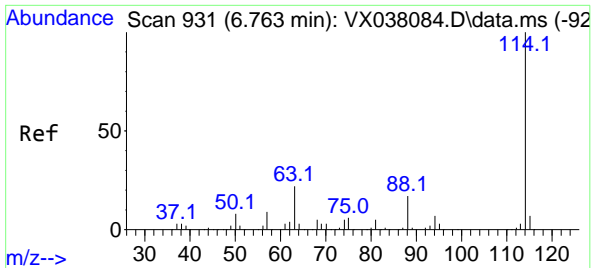
Tgt Ion: 56 Resp: 3633
 Ion Ratio Lower Upper
 56 100
 69 151.5 23.4 35.2#
 84 102.5 65.9 98.9#



#33
 1,2-Dichloroethane-d4
 Concen: 44.181 ug/l
 RT: 5.952 min Scan# 798
 Delta R.T. -0.006 min
 Lab File: VX038098.D
 Acq: 05 Oct 2023 13:27

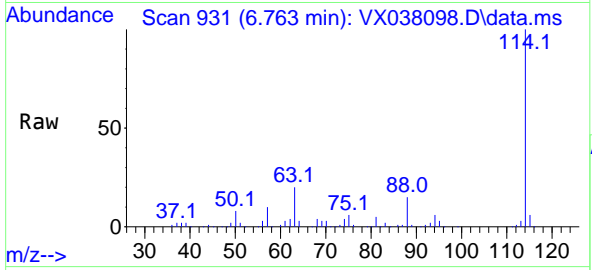
Tgt Ion: 65 Resp: 102473
 Ion Ratio Lower Upper
 65 100
 67 51.5 0.0 100.2



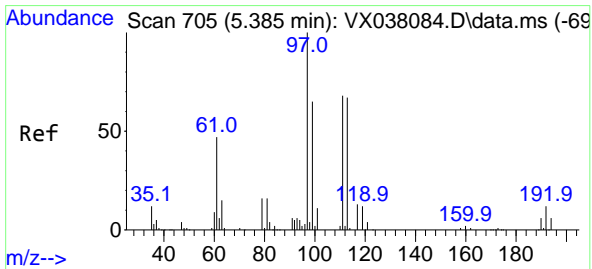
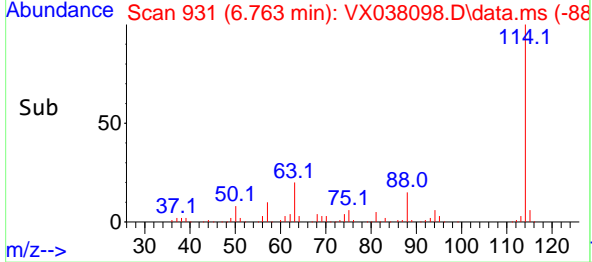
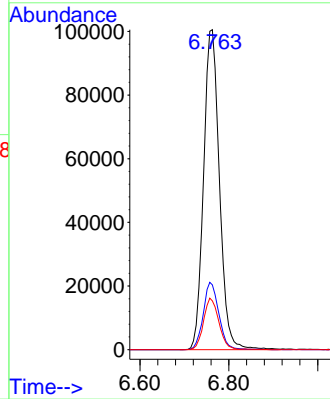


#34
 1,4-Difluorobenzene
 Concen: 50.000 ug/l
 RT: 6.763 min Scan# 91
 Delta R.T. 0.000 min
 Lab File: VX038098.D
 Acq: 05 Oct 2023 13:27

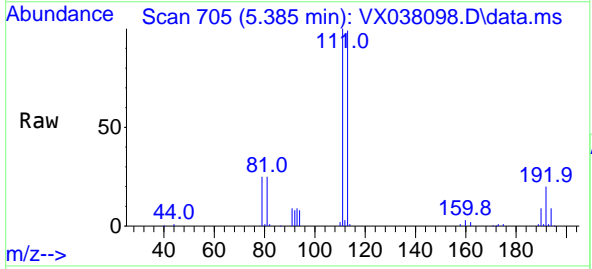
Instrument :
 MSVOA_X
 ClientSampleId :
 VX1005MBL01



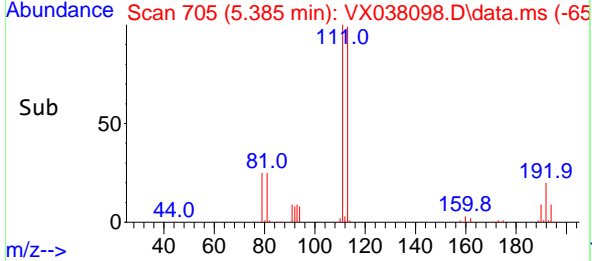
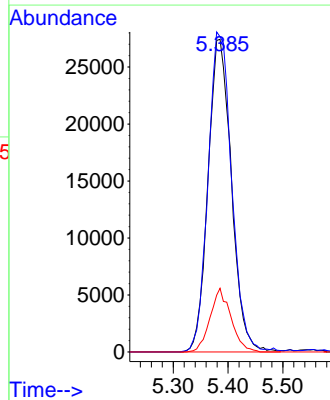
Tgt Ion:114 Resp: 250303
 Ion Ratio Lower Upper
 114 100
 63 20.2 0.0 45.0
 88 15.3 0.0 36.6

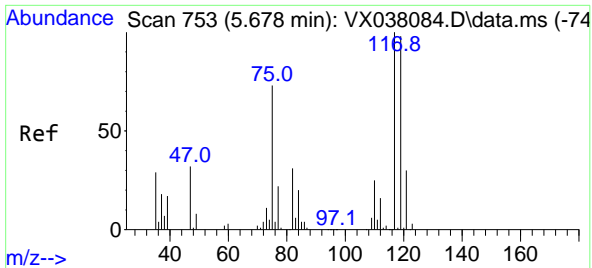


#35
 Dibromofluoromethane
 Concen: 45.025 ug/l
 RT: 5.385 min Scan# 705
 Delta R.T. 0.000 min
 Lab File: VX038098.D
 Acq: 05 Oct 2023 13:27



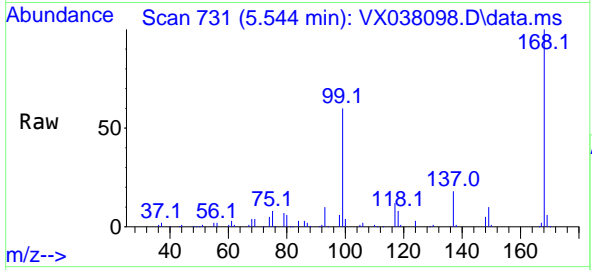
Tgt Ion:113 Resp: 81207
 Ion Ratio Lower Upper
 113 100
 111 102.9 82.9 124.3
 192 18.2 13.3 19.9



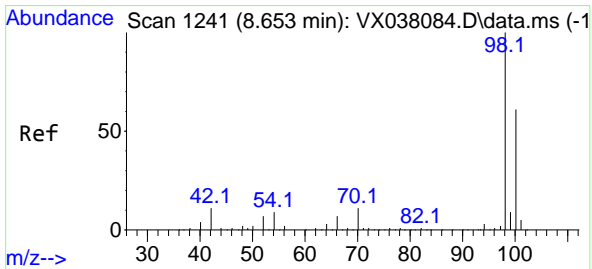
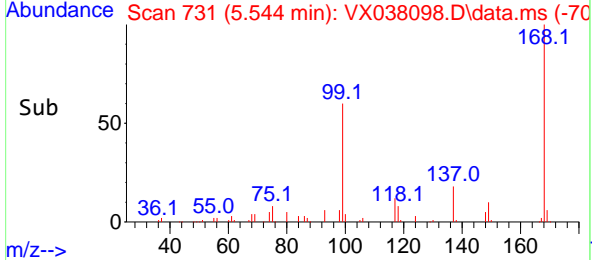
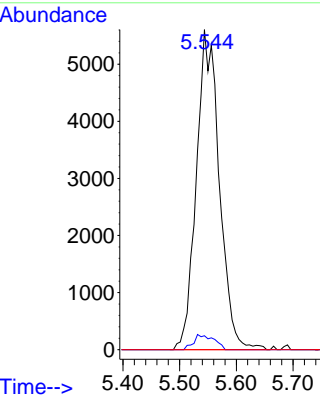


#38
 Carbon Tetrachloride
 Concen: 6.447 ug/l
 RT: 5.544 min Scan# 71
 Delta R.T. -0.134 min
 Lab File: VX038098.D
 Acq: 05 Oct 2023 13:27

Instrument :
 MSVOA_X
 ClientSampleId :
 VX1005MBL01

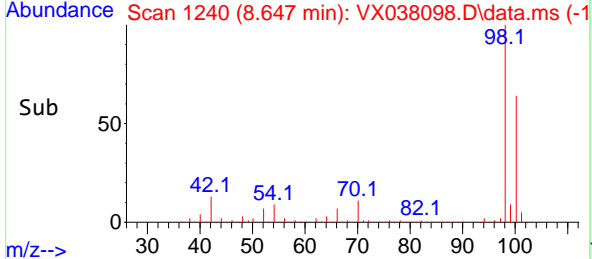
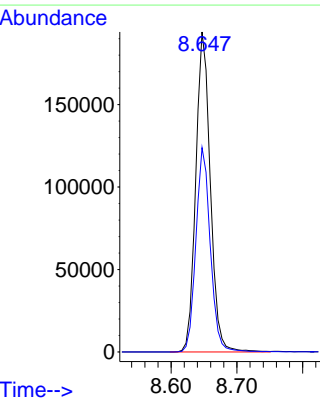
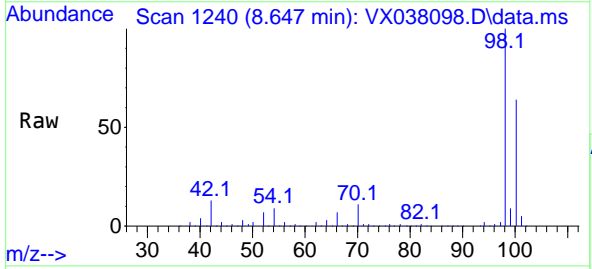


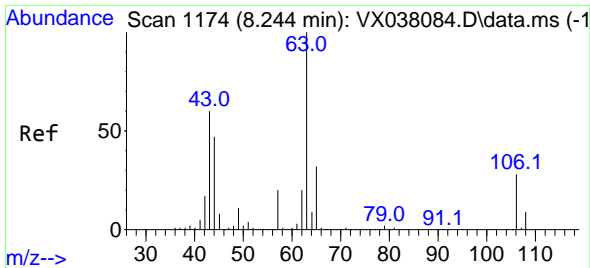
Tgt Ion:117 Resp: 15773
 Ion Ratio Lower Upper
 117 100
 119 4.4 78.2 117.2#
 121 0.0 24.4 36.6#



#50
 Toluene-d8
 Concen: 43.330 ug/l
 RT: 8.647 min Scan# 1240
 Delta R.T. -0.006 min
 Lab File: VX038098.D
 Acq: 05 Oct 2023 13:27

Tgt Ion: 98 Resp: 298628
 Ion Ratio Lower Upper
 98 100
 100 63.4 53.1 79.7

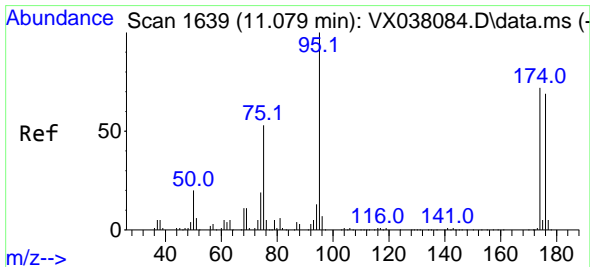
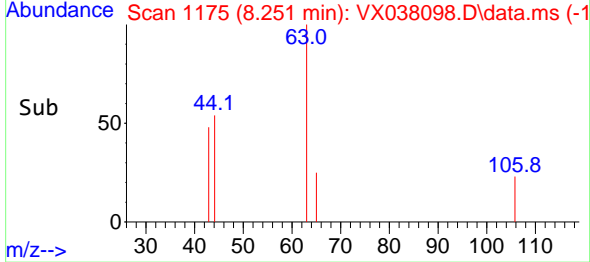
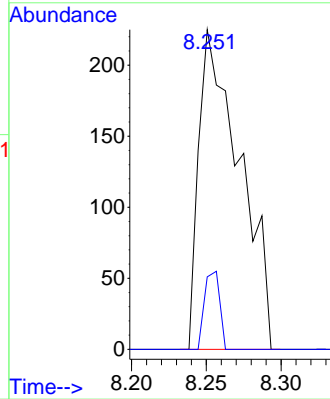
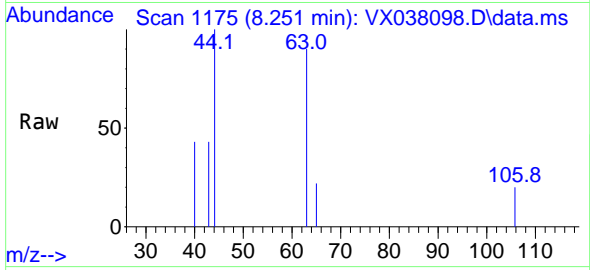




#58
 2-Chloroethyl Vinyl ether
 Concen: 0.293 ug/l
 RT: 8.251 min Scan# 1175
 Delta R.T. 0.007 min
 Lab File: VX038098.D
 Acq: 05 Oct 2023 13:27

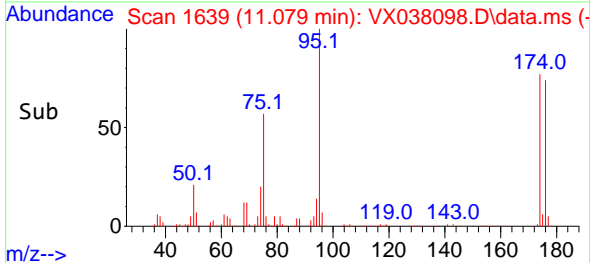
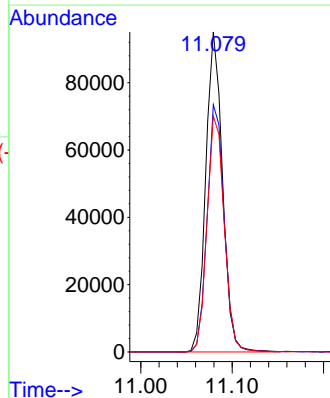
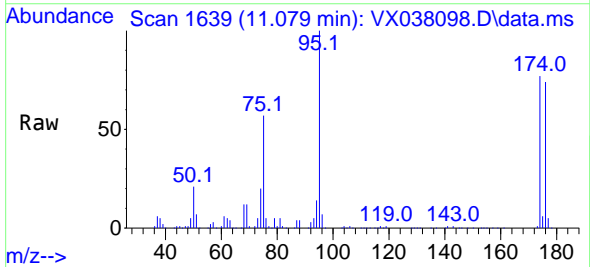
Instrument : MSVOA_X
 ClientSampleId : VX1005MBL01

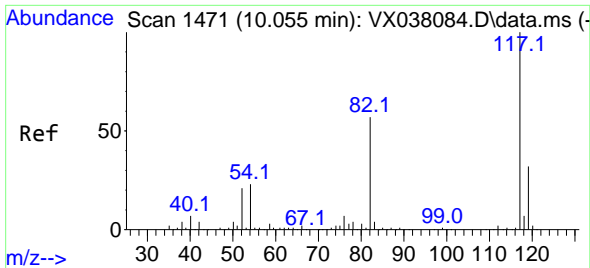
Tgt Ion: 63 Resp: 428
 Ion Ratio Lower Upper
 63 100
 106 9.1 22.5 33.7#



#62
 4-Bromofluorobenzene
 Concen: 46.143 ug/l
 RT: 11.079 min Scan# 1639
 Delta R.T. 0.000 min
 Lab File: VX038098.D
 Acq: 05 Oct 2023 13:27

Tgt Ion: 95 Resp: 120562
 Ion Ratio Lower Upper
 95 100
 174 78.5 0.0 135.6
 176 75.8 0.0 131.0



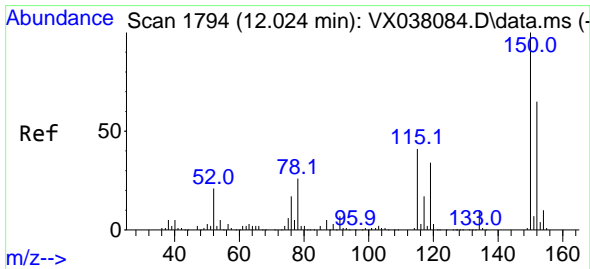
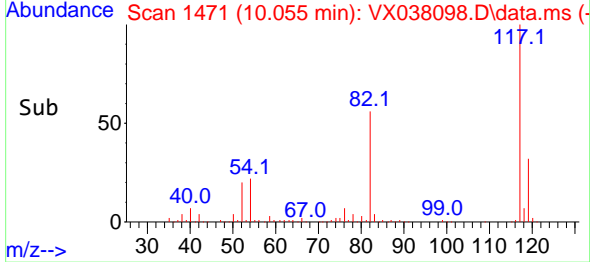
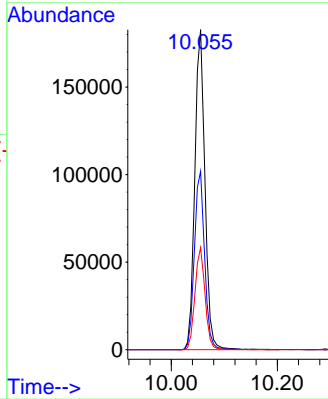
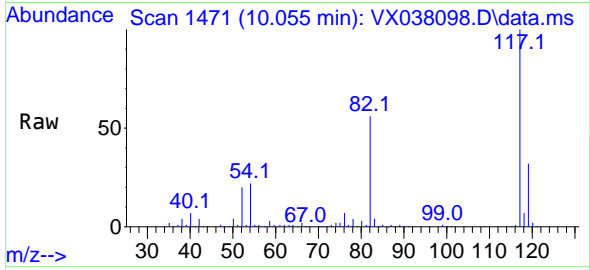


#63
 Chlorobenzene-d5
 Concen: 50.000 ug/l
 RT: 10.055 min Scan# 1471
 Delta R.T. 0.000 min
 Lab File: VX038098.D
 Acq: 05 Oct 2023 13:27

Instrument : MSVOA_X
 ClientSampleId : VX1005MBL01

Tgt Ion:117 Resp: 242614

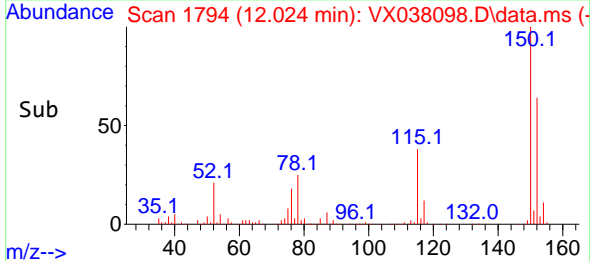
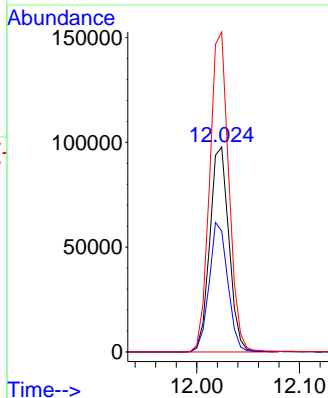
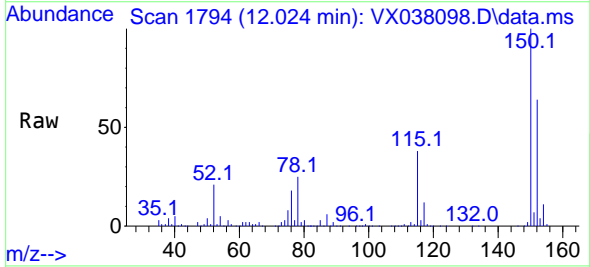
Ion	Ratio	Lower	Upper
117	100		
82	55.7	46.2	69.4
119	31.9	25.5	38.3

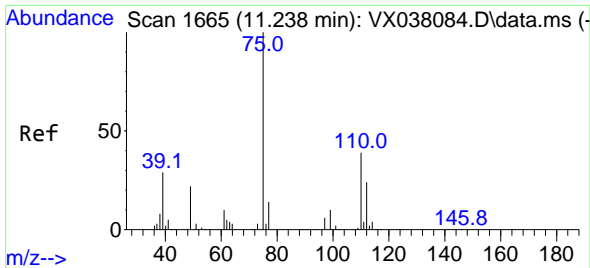


#72
 1,4-Dichlorobenzene-d4
 Concen: 50.000 ug/l
 RT: 12.024 min Scan# 1794
 Delta R.T. 0.000 min
 Lab File: VX038098.D
 Acq: 05 Oct 2023 13:27

Tgt Ion:152 Resp: 126451

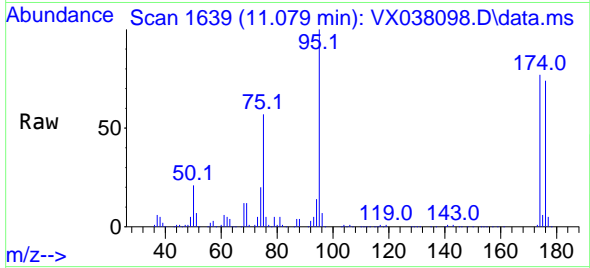
Ion	Ratio	Lower	Upper
152	100		
115	61.5	43.3	129.9
150	156.6	0.0	345.0



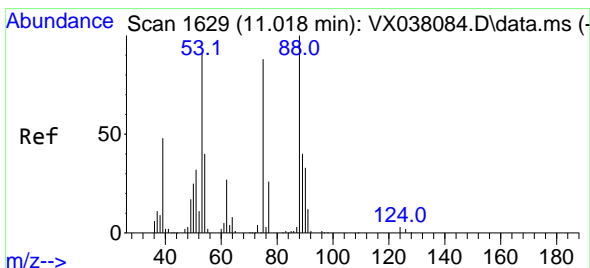
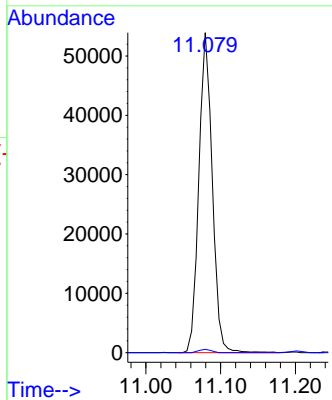
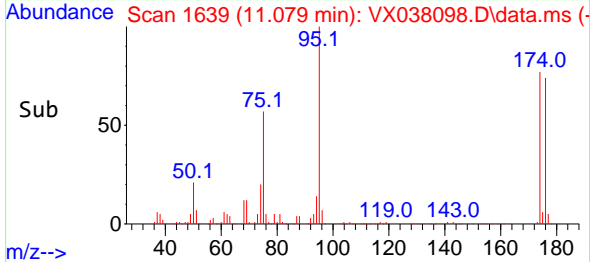


#76
 1,2,3-Trichloropropane
 Concen: 23.375 ug/l
 RT: 11.079 min Scan# 1639
 Delta R.T. -0.159 min
 Lab File: VX038098.D
 Acq: 05 Oct 2023 13:27

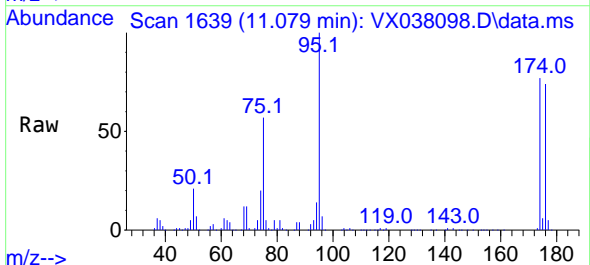
Instrument : MSVOA_X
 ClientSampleId : VX1005MBL01



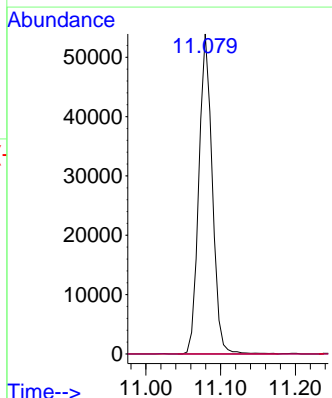
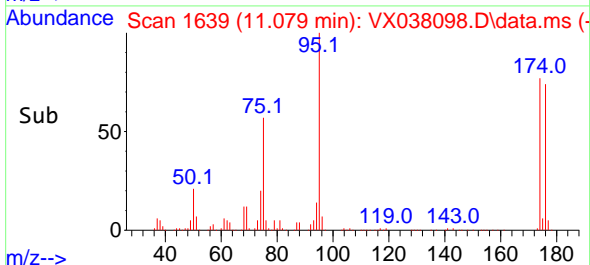
Tgt Ion: 75 Resp: 67195
 Ion Ratio Lower Upper
 75 100
 77 1.0 19.1 57.5#

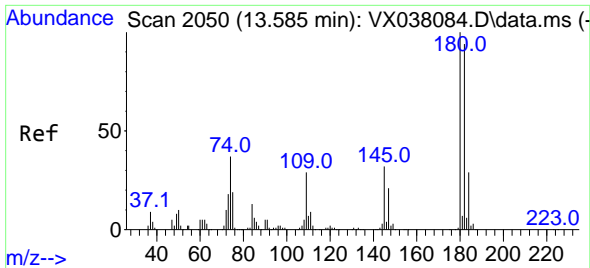


#81
 trans-1,4-Dichloro-2-butene
 Concen: 66.780 ug/l
 RT: 11.079 min Scan# 1639
 Delta R.T. 0.061 min
 Lab File: VX038098.D
 Acq: 05 Oct 2023 13:27



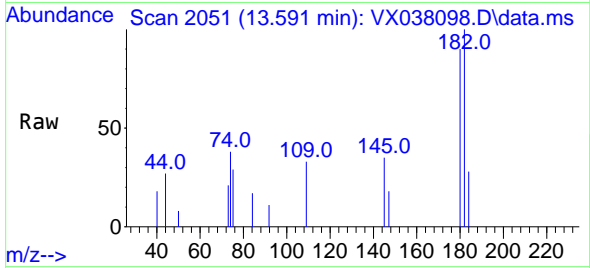
Tgt Ion: 75 Resp: 67195
 Ion Ratio Lower Upper
 75 100
 53 0.0 90.5 135.7#
 89 0.0 36.9 55.3#



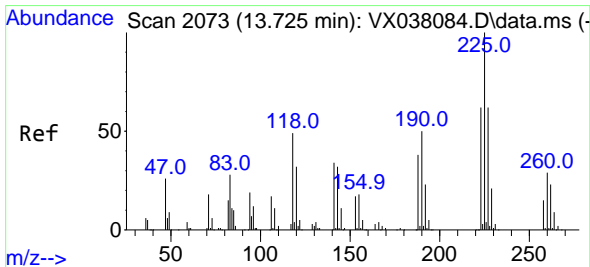
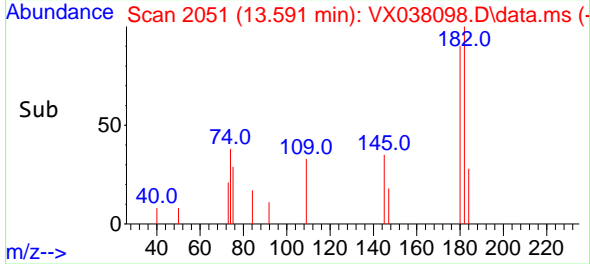
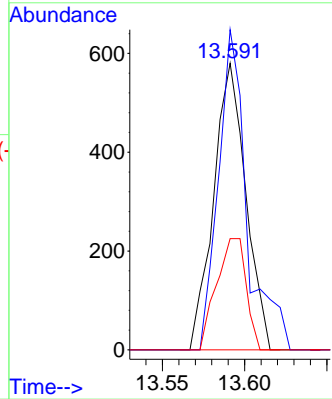


#93
 1,2,4-Trichlorobenzene
 Concen: 0.295 ug/l
 RT: 13.591 min Scan# 2050
 Delta R.T. 0.006 min
 Lab File: VX038098.D
 Acq: 05 Oct 2023 13:27

Instrument : MSVOA_X
 ClientSampleId : VX1005MBL01

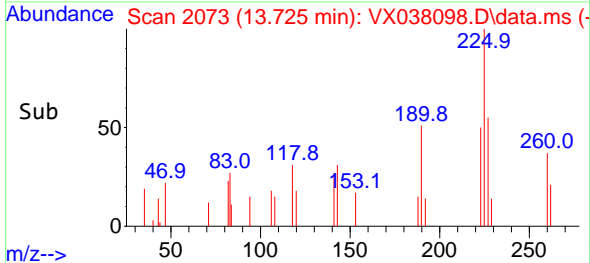
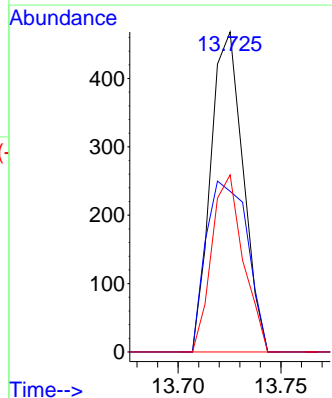
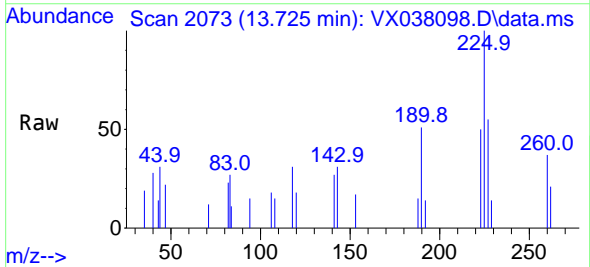


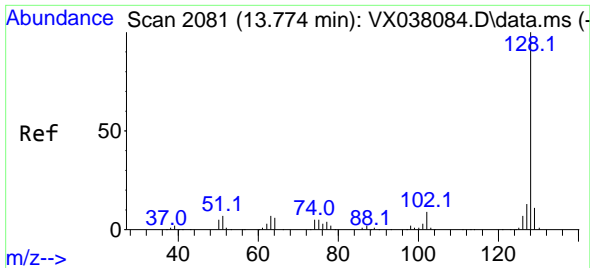
Tgt Ion:180 Resp: 791
 Ion Ratio Lower Upper
 180 100
 182 98.7 48.3 144.8
 145 35.7 18.0 54.0



#94
 Hexachlorobutadiene
 Concen: 0.475 ug/l
 RT: 13.725 min Scan# 2073
 Delta R.T. 0.000 min
 Lab File: VX038098.D
 Acq: 05 Oct 2023 13:27

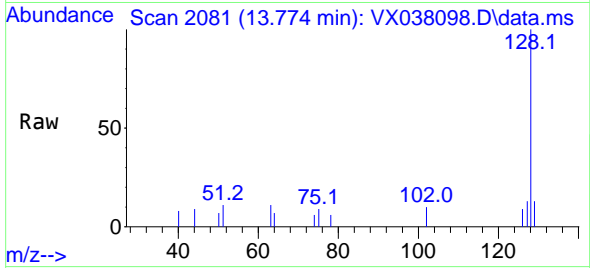
Tgt Ion:225 Resp: 513
 Ion Ratio Lower Upper
 225 100
 223 68.2 31.1 93.2
 227 54.2 32.5 97.5



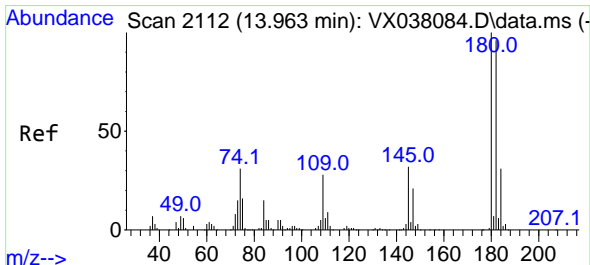
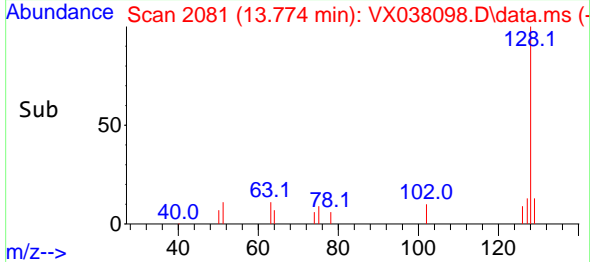
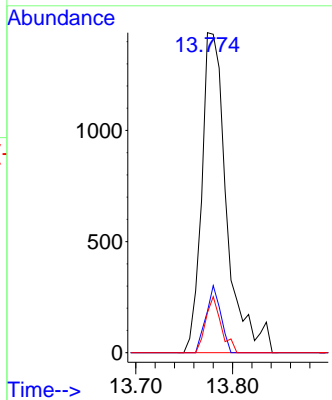


#95
 Naphthalene
 Concen: 0.277 ug/l
 RT: 13.774 min Scan# 2081
 Delta R.T. 0.000 min
 Lab File: VX038098.D
 Acq: 05 Oct 2023 13:27

Instrument :
 MSVOA_X
 ClientSampleId :
 VX1005MBL01



Tgt Ion:128 Resp: 2585
 Ion Ratio Lower Upper
 128 100
 127 12.4 10.3 15.5
 129 10.8 8.8 13.2



#96
 1,2,3-Trichlorobenzene
 Concen: 0.272 ug/l
 RT: 13.963 min Scan# 2112
 Delta R.T. 0.000 min
 Lab File: VX038098.D
 Acq: 05 Oct 2023 13:27

Tgt Ion:180 Resp: 706
 Ion Ratio Lower Upper
 180 100
 182 93.8 46.9 140.6
 145 36.1 17.8 53.5

