

Data Path : Z:\VOASRV\HPCHEM1\MSVOA X\DATA\VX100620\
 Data File : VX018803.D
 Acq On : 06 Oct 2020 16:48
 Operator : JC/SP
 Sample : L4171-08
 Misc : 25.0mL/MSVOA X/WATER
 ALS Vial : 17 Sample Multiplier: 1

Instrument :
 MSVOA_X
 ClientSampled :
 VHBLK01

Integration Parameters: rteint.p
 Integrator: RTE
 Smoothing : ON
 Sampling : 1
 Start Thrs: 0.1
 Stop Thrs : 0

Filtering: 5
 Min Area: 3 % of largest Peak
 Max Peaks: 100
 Peak Location: TOP

If leading or trailing edge < 100 prefer < Baseline drop else tangent >
 Peak separation: 5

Method : Z:\VOASRV\HPCHEM1\MSVOA_X\METHOD\SOMXTR100220WMA.M
 Title : TRACE VOA SOM01.0

Signal : TIC

peak #	R.T. min	first scan	max scan	last scan	PK TY	peak height	corr. area	corr. % max.	% of total
1	1.386	46	49	55	rBV	47560	48568	10.75%	1.337%
2	1.697	96	100	106	rVB	40197	45256	10.01%	1.246%
3	2.343	199	206	213	rBV	89263	136674	30.24%	3.762%
4	2.831	280	286	294	rBV2	7913	17496	3.87%	0.482%
5	3.495	392	395	404	rVB10	3394	7995	1.77%	0.220%
6	4.556	557	569	587	rBV	42827	186932	41.36%	5.145%
7	5.135	653	664	678	rVB2	59560	185696	41.08%	5.111%
8	6.044	799	813	824	rBV2	144046	412459	91.26%	11.353%
9	6.830	932	942	956	rBV	122465	300539	66.49%	8.273%
10	7.172	994	998	1002	rBV7	2332	4564	1.01%	0.126%
11	7.367	1022	1030	1043	rBV2	89956	198700	43.96%	5.469%
12	8.293	1176	1182	1187	rBV	13946	23113	5.11%	0.636%
13	8.373	1189	1195	1201	rBV	57175	94326	20.87%	2.596%
14	8.696	1240	1248	1257	rBV	205552	322537	71.36%	8.878%
15	8.994	1292	1297	1302	rBV	41706	59248	13.11%	1.631%
16	9.427	1362	1368	1382	rBV	306524	451983	100.00%	12.441%
17	9.738	1414	1419	1422	rBV2	8773	11571	2.56%	0.318%
18	10.098	1472	1478	1485	rBV	255342	356689	78.92%	9.818%
19	11.232	1657	1664	1672	rBV	103939	132236	29.26%	3.640%
20	12.061	1795	1800	1807	rBV	255804	320833	70.98%	8.831%
21	12.360	1843	1849	1859	rBV	243049	309272	68.43%	8.513%
22	13.896	2096	2101	2105	rBV4	3380	6294	1.39%	0.173%

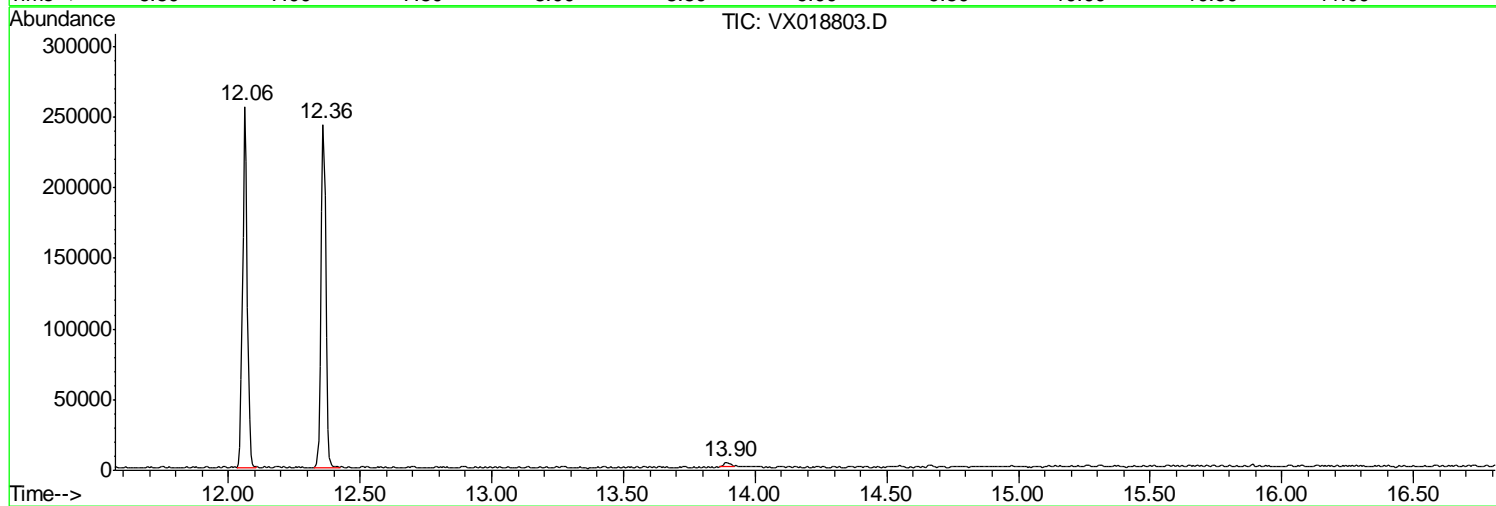
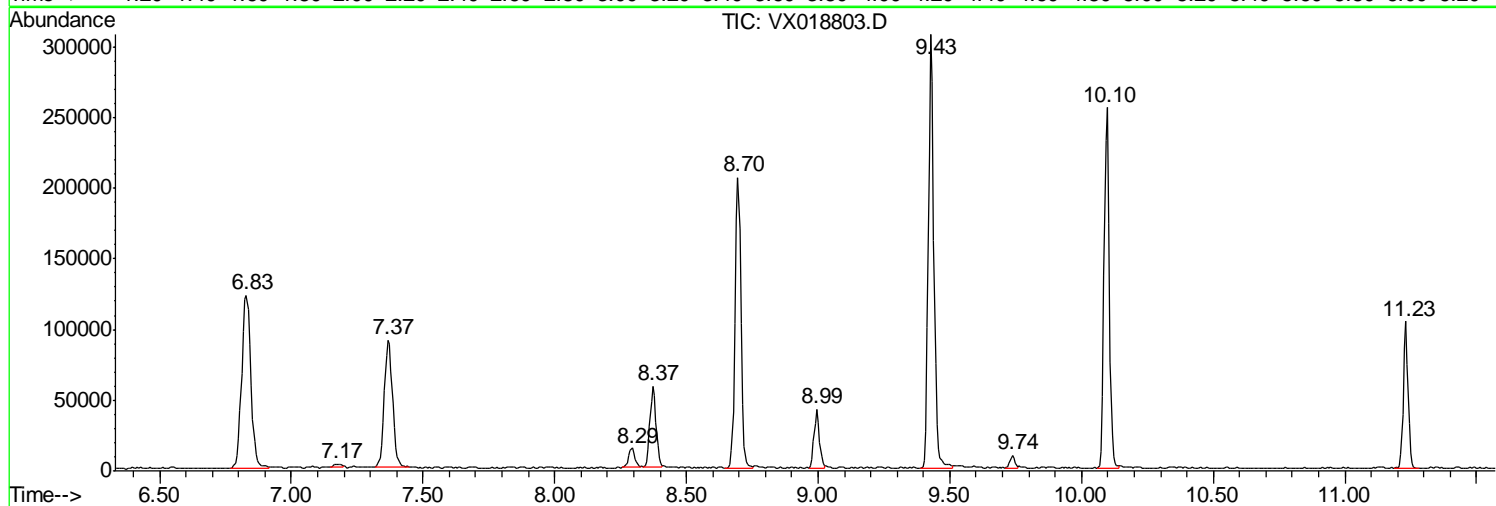
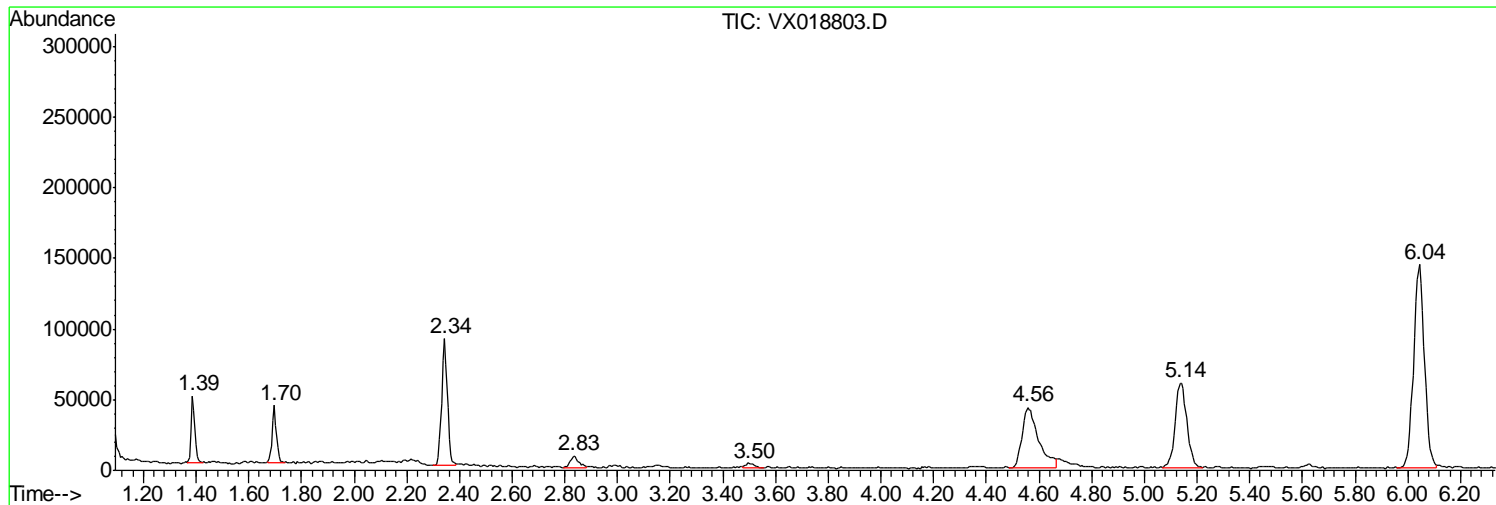
Sum of corrected areas: 3632981

Data Path : Z:\VOASRV\HPCHEM1\MSVOA X\DATA\VX100620\
Data File : VX018803.D
Acq On : 06 Oct 2020 16:48
Operator : JC/SP
Sample : L4171-08
Misc : 25.0mL/MSVOA X/WATER
ALS Vial : 17 Sample Multiplier: 1

Instrument :
MSVOA_X
ClientSampled :
VHBLK01

Quant Method : Z:\VOASRV\HPCHEM1\MSVOA_X\METHOD\SOMXTR100220WMA.M
Quant Title : TRACE VOA SOM01.0

TIC Library : C:\DATABASE\NIST11.L
TIC Integration Parameters: LSCINT.P



Data Path : Z:\VOASRV\HPCHEM1\MSVOA_X\DATA\VX100620\
Data File : VX018803.D
Acq On : 06 Oct 2020 16:48
Operator : JC/SP
Sample : L4171-08
Misc : 25.0mL/MSVOA_X/WATER
ALS Vial : 17 Sample Multiplier: 1

Instrument :
MSVOA_X
ClientSampleId :
VHBLK01

Quant Method : Z:\VOASRV\HPCHEM1\MSVOA_X\METHOD\SOMXTR100220WMA.M
Quant Title : TRACE VOA SOM01.0

TIC Library : C:\DATABASE\NIST11.L
TIC Integration Parameters: LSCINT.P

No Library Search Compounds Detected

Data Path : Z:\VOASRV\HPCHEM1\MSVOA_X\DATA\VX100620\
Data File : VX018803.D
Acq On : 06 Oct 2020 16:48
Operator : JC/SP
Sample : L4171-08
Misc : 25.0mL/MSVOA_X/WATER
ALS Vial : 17 Sample Multiplier: 1

Instrument :
MSVOA_X
ClientSampleId :
VHBLK01

Quant Method : Z:\VOASRV\HPCHEM1\MSVOA_X\METHOD\SOMXTR100220WMA.M
Quant Title : TRACE VOA SOM01.0

TIC Library : C:\DATABASE\NIST11.L
TIC Integration Parameters: LSCINT.P

TIC Top Hit name	RT	EstConc	Units	Response	--Internal Standard--			
					#	RT	Resp	Conc
