

Data Path : Z:\voasrv\HPCHEM1\MSVOA_X\Data\VX100623\
 Data File : VX038140.D
 Acq On : 06 Oct 2023 18:51
 Operator : JC/MD
 Sample : PB156147TB
 Misc : 5.0mL/MSVOA_X/WATER
 ALS Vial : 26 Sample Multiplier: 1

Instrument :
 MSVOA_X
 ClientSampleId :

Quant Time: Oct 07 04:24:40 2023
 Quant Method : Z:\voasrv\HPCHEM1\MSVOA_X\Method\82X100523W.M
 Quant Title : SW846 8260
 QLast Update : Thu Oct 05 15:27:13 2023
 Response via : Initial Calibration

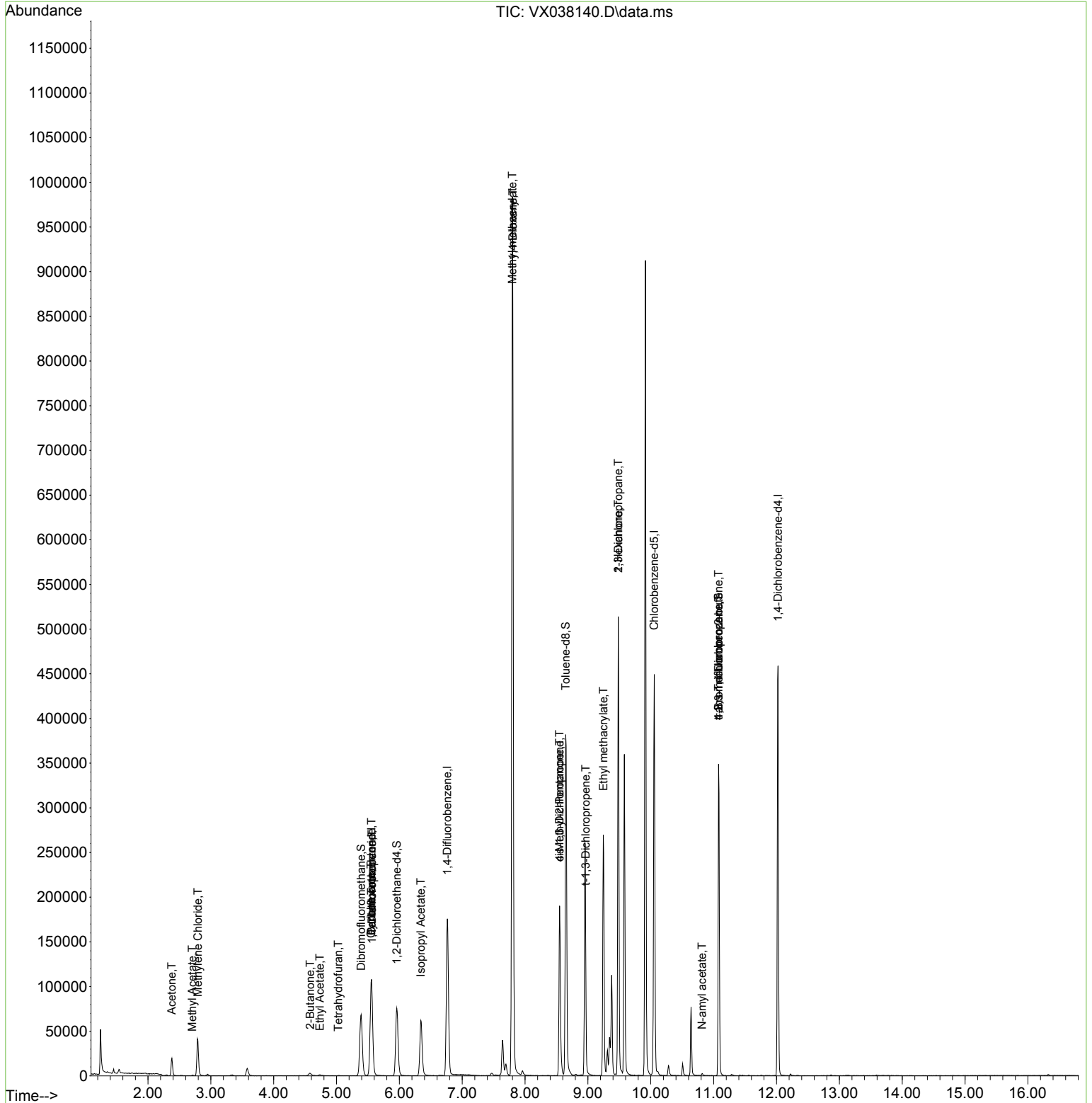
Compound	R.T.	QIon	Response	Conc	Units	Dev(Min)
Internal Standards						
1) Pentafluorobenzene	5.556	168	99706	50.000	ug/l	0.00
34) 1,4-Difluorobenzene	6.763	114	181131	50.000	ug/l	0.00
63) Chlorobenzene-d5	10.055	117	190442	50.000	ug/l	0.00
72) 1,4-Dichlorobenzene-d4	12.024	152	93186	50.000	ug/l	0.00
System Monitoring Compounds						
33) 1,2-Dichloroethane-d4	5.958	65	74389	46.386	ug/l	0.00
Spiked Amount	50.000	Range 78 - 117	Recovery	=	92.780%	
35) Dibromofluoromethane	5.391	113	57852	44.326	ug/l	0.00
Spiked Amount	50.000	Range 75 - 124	Recovery	=	88.660%	
50) Toluene-d8	8.647	98	234715	47.062	ug/l	0.00
Spiked Amount	50.000	Range 92 - 112	Recovery	=	94.120%	
62) 4-Bromofluorobenzene	11.079	95	88326	46.715	ug/l	0.00
Spiked Amount	50.000	Range 83 - 123	Recovery	=	93.420%	
Target Compounds						
						Qvalue
5) Bromomethane	1.611	94	23	Below Cal	#	3
6) Chloroethane	1.666	64	327	Below Cal	#	43
11) Tert butyl alcohol	2.947	59	1048	Below Cal	#	78
16) Acetone	2.380	43	20236	30.234	ug/l	90
18) Methyl Acetate	2.703	43	778	0.271	ug/l	97
20) Methylene Chloride	2.794	84	19152	15.213	ug/l	94
25) 2-Butanone	4.580	43	3246	3.006	ug/l	91
29) Tetrahydrofuran	5.025	42	184	0.262	ug/l #	42
31) Cyclohexane	5.550	56	2480	1.427	ug/l #	14
36) 1,1-Dichloropropene	5.562	75	8455	4.698	ug/l #	51
37) Ethyl Acetate	4.733	43	2080	0.973	ug/l #	80
38) Carbon Tetrachloride	5.556	117	10515	5.939	ug/l #	14
43) Isopropyl Acetate	6.342	43	83914	26.298	ug/l	98
48) Methyl methacrylate	7.799	41	88799	58.294	ug/l #	50
49) 1,4-Dioxane	7.805	88	80	2.131	ug/l #	1
51) 4-Methyl-2-Pentanone	8.549	43	67160	30.514	ug/l #	53
53) t-1,3-Dichloropropene	8.964	75	515	0.267	ug/l #	43
54) cis-1,3-Dichloropropene	8.549	75	30212	14.903	ug/l #	62
56) Ethyl methacrylate	9.244	69	746	0.347	ug/l #	1
57) 1,3-Dichloropropane	9.482	76	4367	1.925	ug/l #	42
59) 2-Hexanone	9.482	43	57630	32.570	ug/l #	55
74) N-amyl acetate	10.817	43	950	0.356	ug/l #	44
76) 1,2,3-Trichloropropane	11.079	75	49406	23.322	ug/l #	39
81) trans-1,4-Dichloro-2-b...	11.079	75	49406	66.638	ug/l #	5

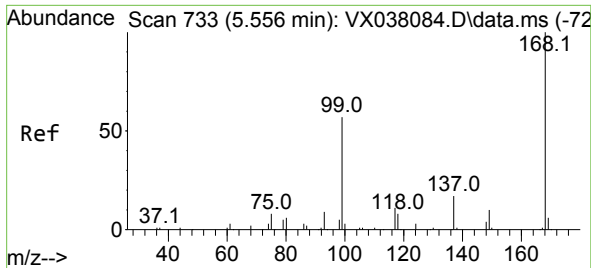
(#) = qualifier out of range (m) = manual integration (+) = signals summed

Data Path : Z:\voasrv\HPCHEM1\MSVOA_X\Data\VX100623\
 Data File : VX038140.D
 Acq On : 06 Oct 2023 18:51
 Operator : JC/MD
 Sample : PB156147TB
 Misc : 5.0mL/MSVOA_X/WATER
 ALS Vial : 26 Sample Multiplier: 1

Instrument :
 MSVOA_X
 ClientSampleId :

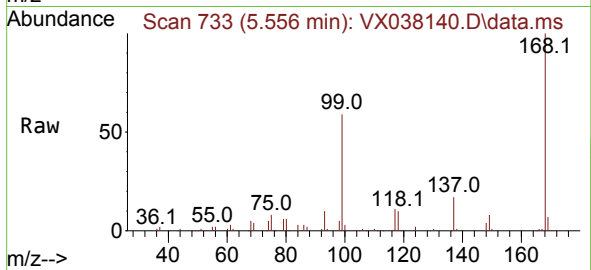
Quant Time: Oct 07 04:24:40 2023
 Quant Method : Z:\voasrv\HPCHEM1\MSVOA_X\Method\82X100523W.M
 Quant Title : SW846 8260
 QLast Update : Thu Oct 05 15:27:13 2023
 Response via : Initial Calibration



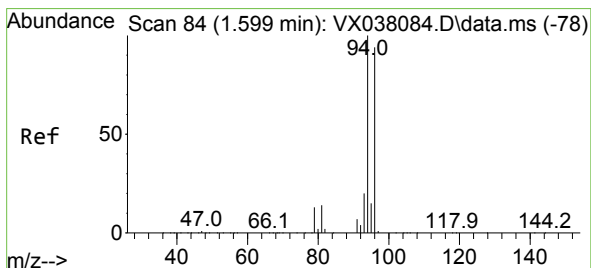
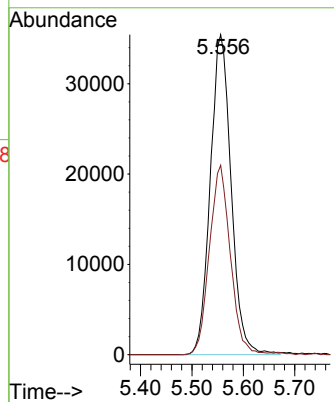
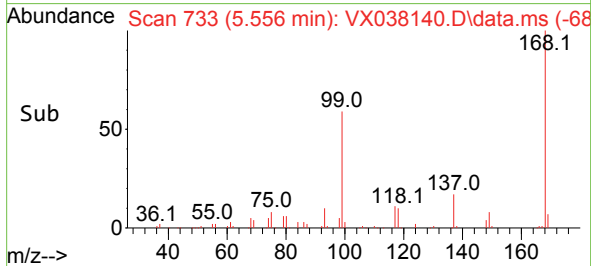


#1
 Pentafluorobenzene
 Concen: 50.000 ug/l
 RT: 5.556 min Scan# 71
 Delta R.T. -0.000 min
 Lab File: VX038140.D
 Acq: 06 Oct 2023 18:51

Instrument :
 MSVOA_X
 ClientSampleId :

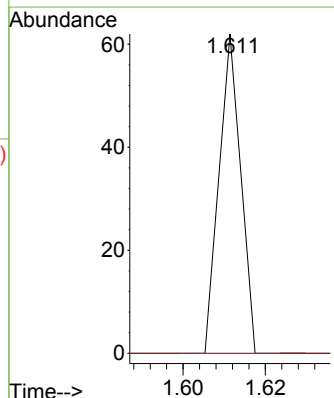
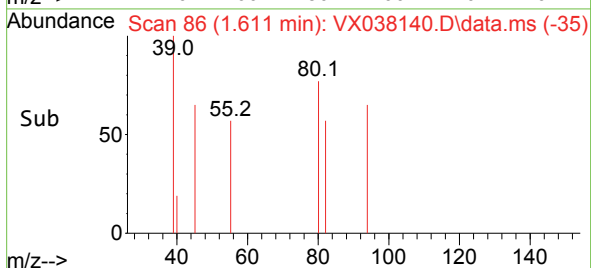
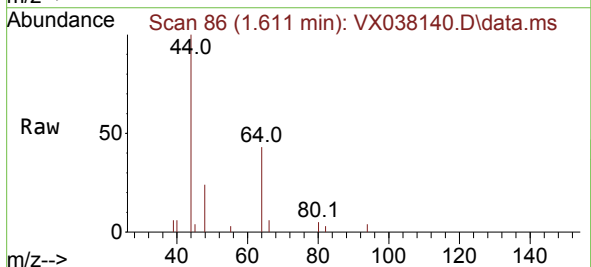


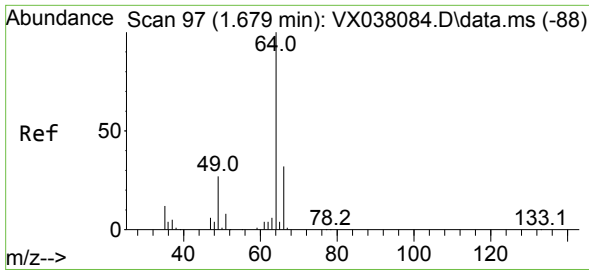
Tgt Ion:168 Resp: 99706
 Ion Ratio Lower Upper
 168 100
 99 59.2 56.6 85.0



#5
 Bromomethane
 Concen: Below Cal
 RT: 1.611 min Scan# 86
 Delta R.T. 0.012 min
 Lab File: VX038140.D
 Acq: 06 Oct 2023 18:51

Tgt Ion: 94 Resp: 23
 Ion Ratio Lower Upper
 94 100
 96 0.0 74.6 111.8#

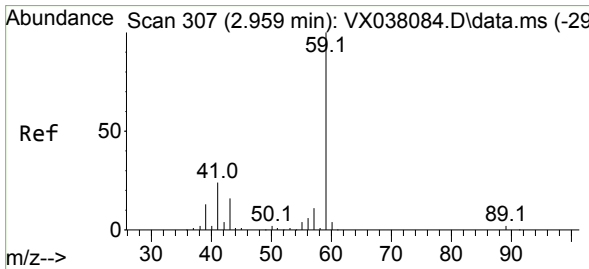
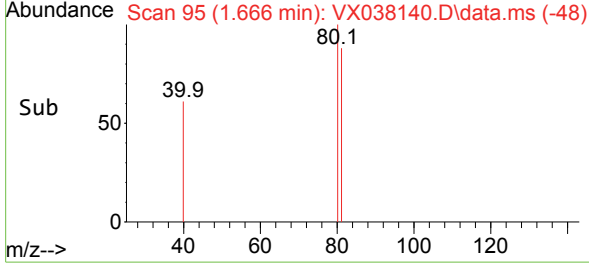
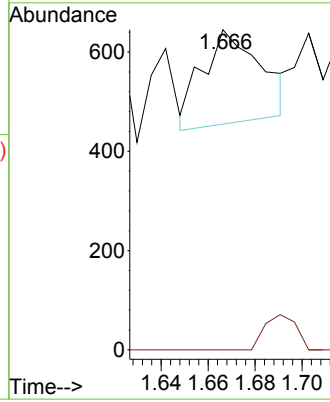
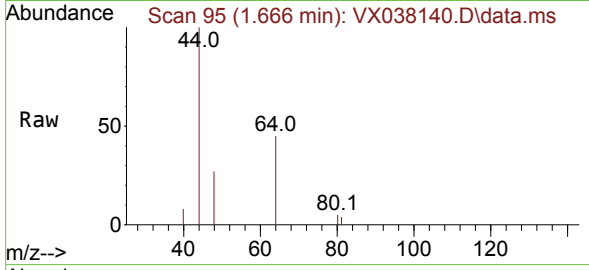




#6
 Chloroethane
 Concen: Below Cal
 RT: 1.666 min Scan# 91
 Delta R.T. -0.013 min
 Lab File: VX038140.D
 Acq: 06 Oct 2023 18:51

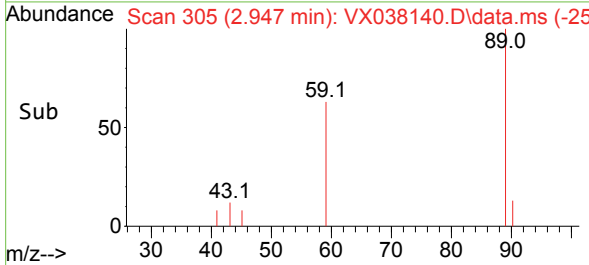
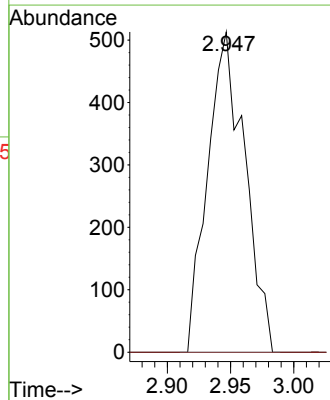
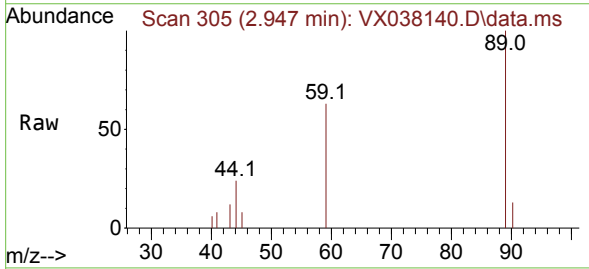
Instrument :
 MSVOA_X
 ClientSampleId :

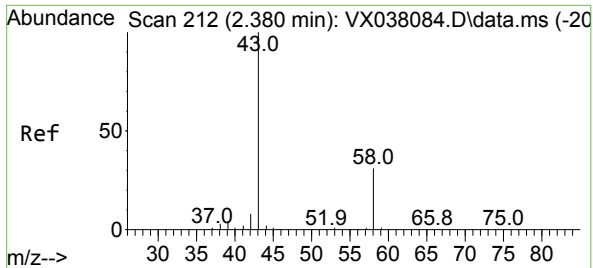
Tgt Ion: 64 Resp: 327
 Ion Ratio Lower Upper
 64 100
 66 0.0 25.1 37.7#



#11
 Tert butyl alcohol
 Concen: Below Cal
 RT: 2.947 min Scan# 305
 Delta R.T. -0.012 min
 Lab File: VX038140.D
 Acq: 06 Oct 2023 18:51

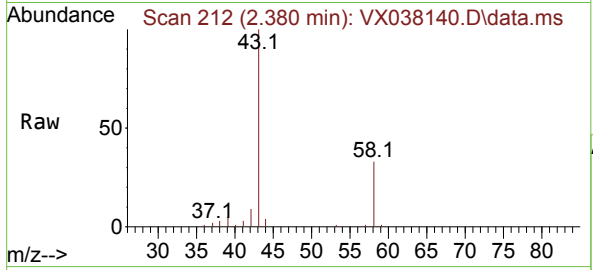
Tgt Ion: 59 Resp: 1048
 Ion Ratio Lower Upper
 59 100
 57 0.0 6.0 9.0#



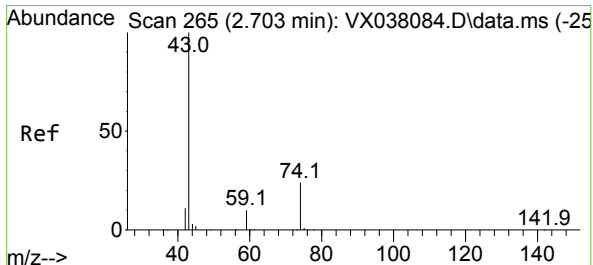
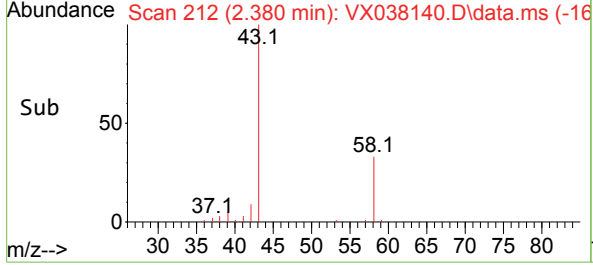
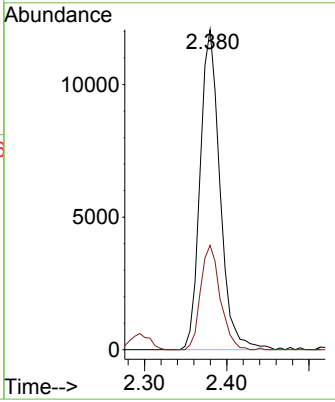


#16
 Acetone
 Concen: 30.234 ug/l
 RT: 2.380 min Scan# 212
 Delta R.T. -0.000 min
 Lab File: VX038140.D
 Acq: 06 Oct 2023 18:51

Instrument : MSVOA_X
 ClientSampleId :

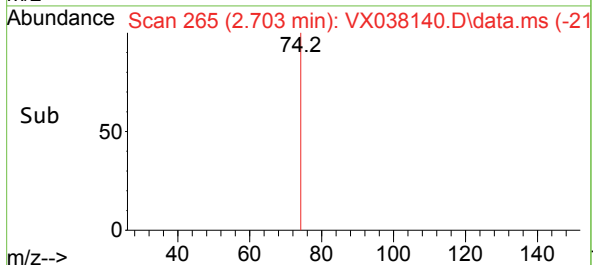
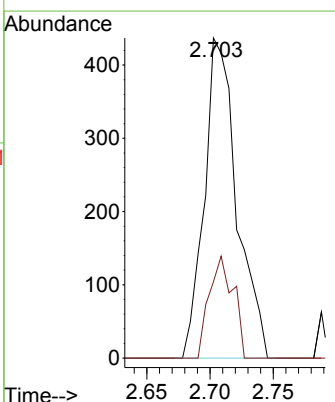
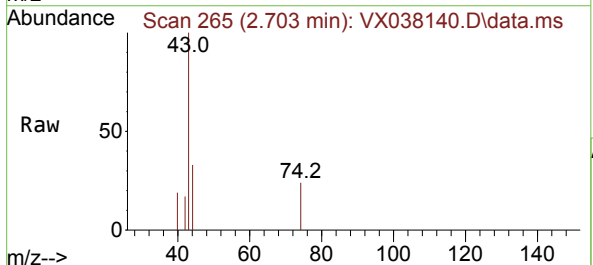


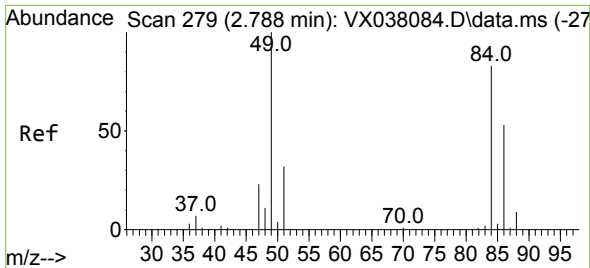
Tgt Ion: 43 Resp: 20236
 Ion Ratio Lower Upper
 43 100
 58 32.6 21.9 32.9



#18
 Methyl Acetate
 Concen: 0.271 ug/l
 RT: 2.703 min Scan# 265
 Delta R.T. -0.000 min
 Lab File: VX038140.D
 Acq: 06 Oct 2023 18:51

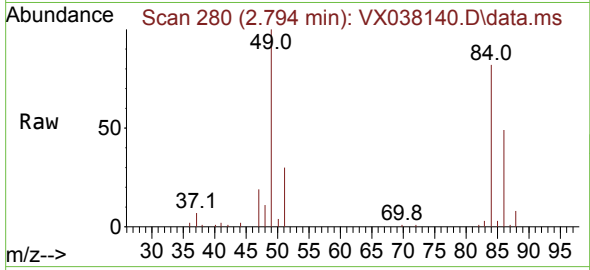
Tgt Ion: 43 Resp: 778
 Ion Ratio Lower Upper
 43 100
 74 23.7 17.8 26.8





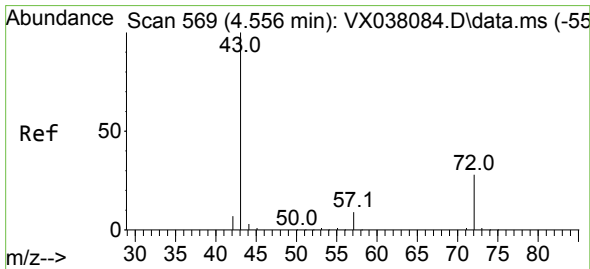
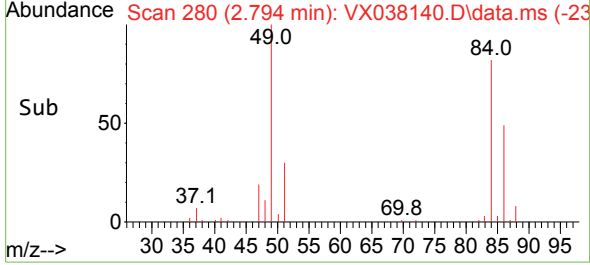
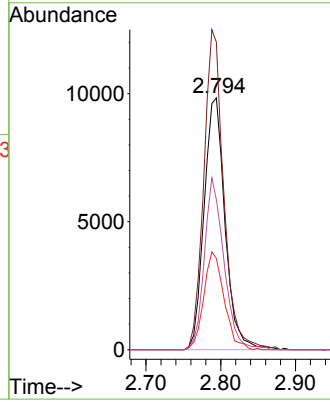
#20
 Methylene Chloride
 Concen: 15.213 ug/l
 RT: 2.794 min Scan# 21
 Delta R.T. 0.006 min
 Lab File: VX038140.D
 Acq: 06 Oct 2023 18:51

Instrument :
 MSVOA_X
 ClientSampleId :



Tgt Ion: 84 Resp: 19152

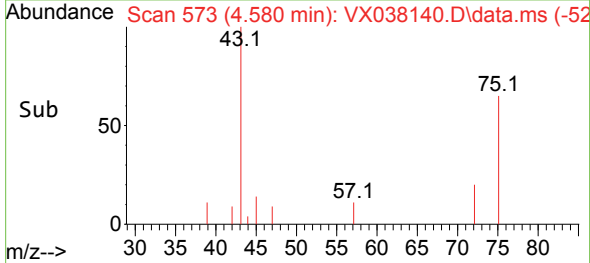
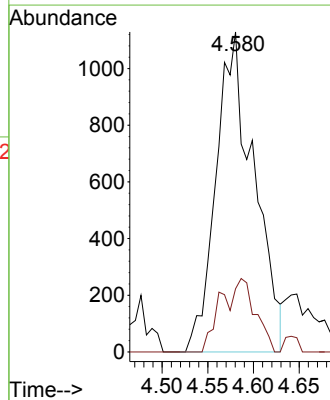
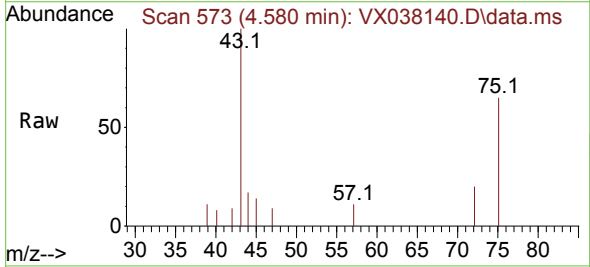
Ion	Ratio	Lower	Upper
84	100		
49	122.1	103.6	155.4
51	36.2	33.8	50.6
86	59.6	49.4	74.0

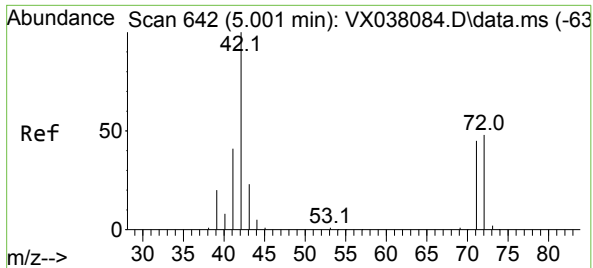


#25
 2-Butanone
 Concen: 3.006 ug/l
 RT: 4.580 min Scan# 573
 Delta R.T. 0.024 min
 Lab File: VX038140.D
 Acq: 06 Oct 2023 18:51

Tgt Ion: 43 Resp: 3246

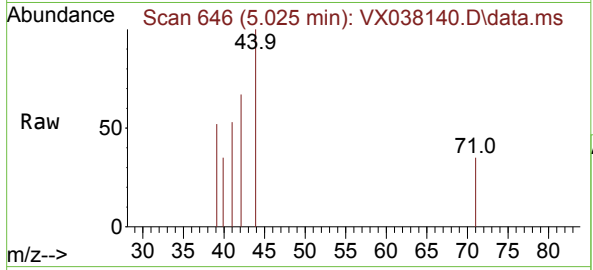
Ion	Ratio	Lower	Upper
43	100		
72	19.8	19.4	29.2





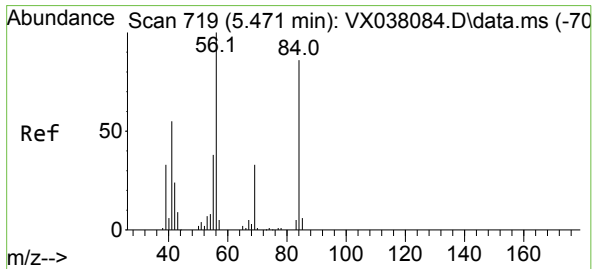
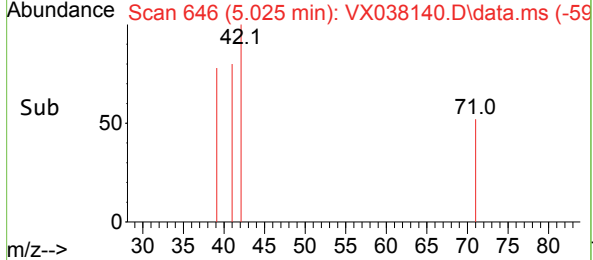
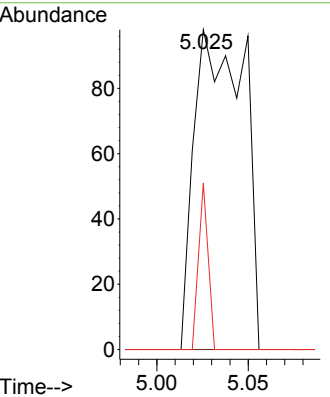
#29
 Tetrahydrofuran
 Concen: 0.262 ug/l
 RT: 5.025 min Scan# 646
 Delta R.T. 0.024 min
 Lab File: VX038140.D
 Acq: 06 Oct 2023 18:51

Instrument : MSVOA_X
 ClientSampleId :

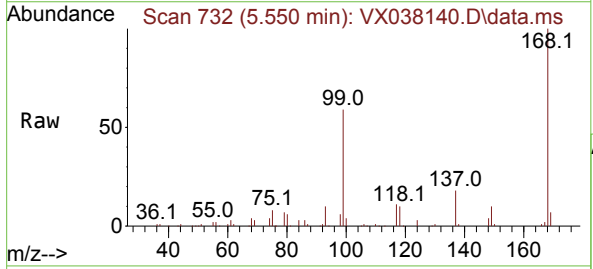


Tgt Ion: 42 Resp: 184

Ion	Ratio	Lower	Upper
42	100		
72	0.0	34.2	51.4#
71	10.3	32.2	48.2#

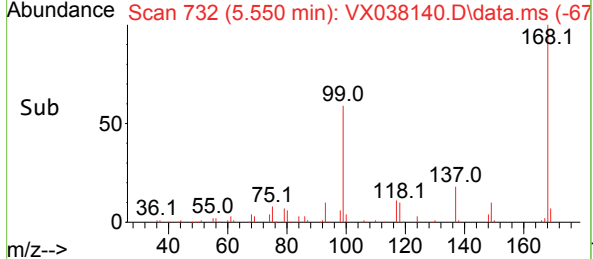
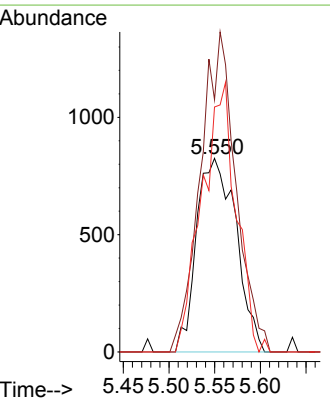


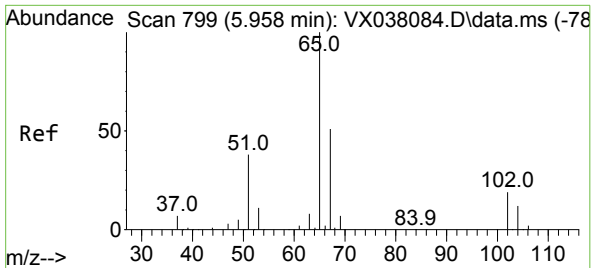
#31
 Cyclohexane
 Concen: 1.427 ug/l
 RT: 5.550 min Scan# 732
 Delta R.T. 0.079 min
 Lab File: VX038140.D
 Acq: 06 Oct 2023 18:51



Tgt Ion: 56 Resp: 2480

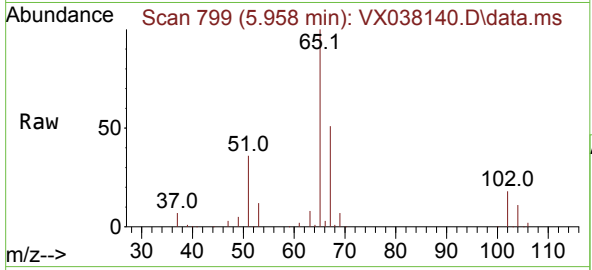
Ion	Ratio	Lower	Upper
56	100		
69	130.3	23.4	35.2#
84	126.5	65.9	98.9#



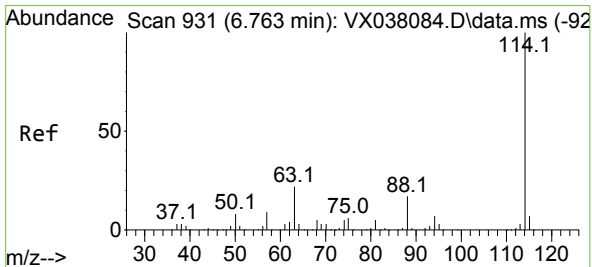
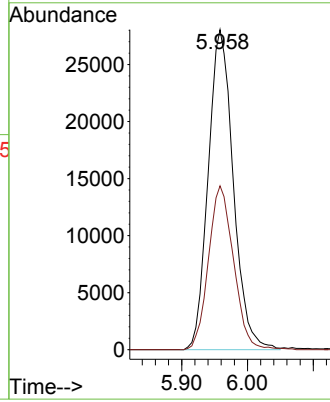
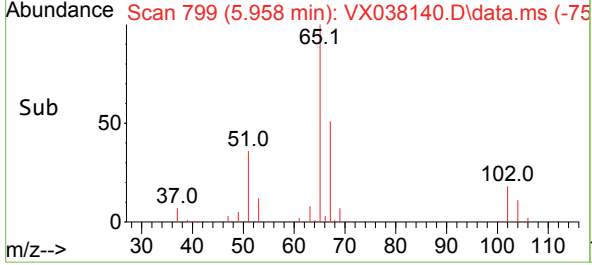


#33
 1,2-Dichloroethane-d4
 Concen: 46.386 ug/l
 RT: 5.958 min Scan# 799
 Delta R.T. 0.000 min
 Lab File: VX038140.D
 Acq: 06 Oct 2023 18:51

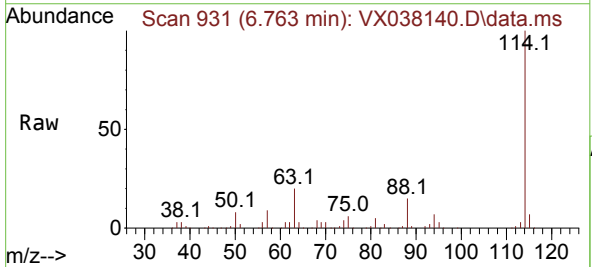
Instrument : MSVOA_X
 ClientSampleId :



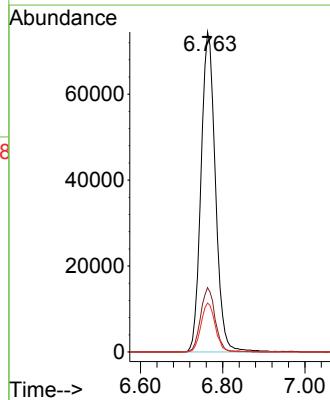
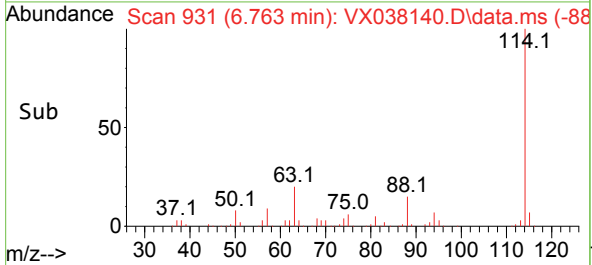
Tgt Ion: 65 Resp: 74389
 Ion Ratio Lower Upper
 65 100
 67 51.3 0.0 100.2

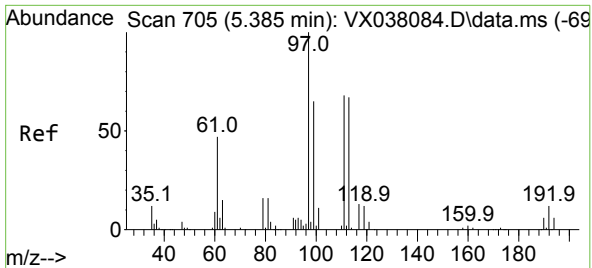


#34
 1,4-Difluorobenzene
 Concen: 50.000 ug/l
 RT: 6.763 min Scan# 931
 Delta R.T. -0.000 min
 Lab File: VX038140.D
 Acq: 06 Oct 2023 18:51



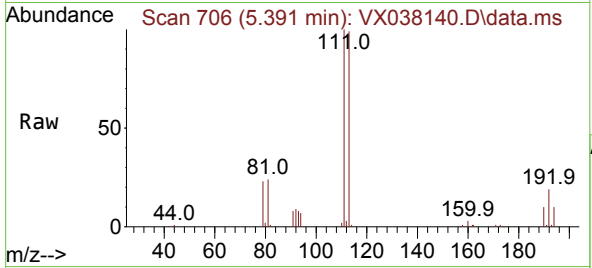
Tgt Ion: 114 Resp: 181131
 Ion Ratio Lower Upper
 114 100
 63 20.1 0.0 45.0
 88 15.3 0.0 36.6



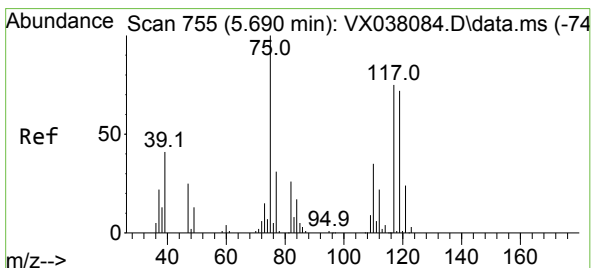
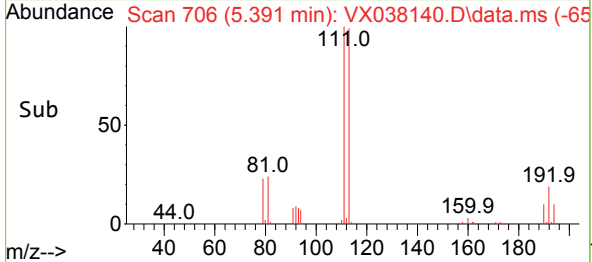
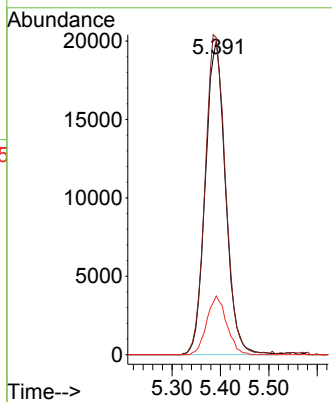


#35
 Dibromofluoromethane
 Concen: 44.326 ug/l
 RT: 5.391 min Scan# 706
 Delta R.T. 0.006 min
 Lab File: VX038140.D
 Acq: 06 Oct 2023 18:51

Instrument : MSVOA_X
 ClientSampleId :

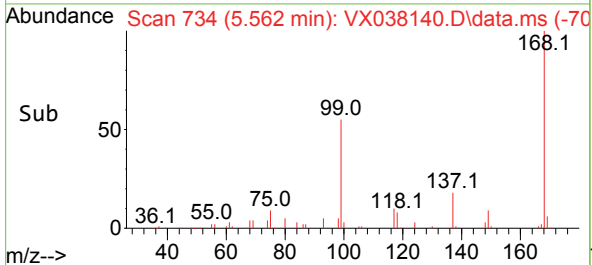
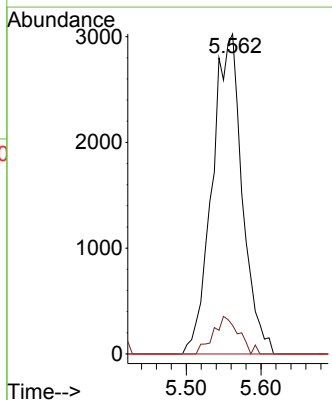
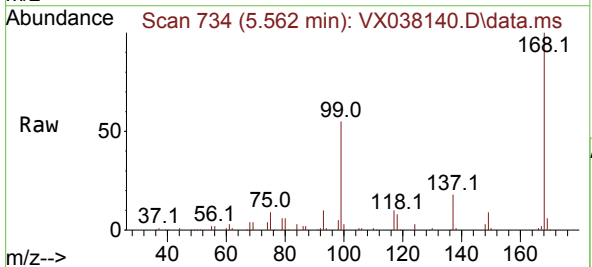


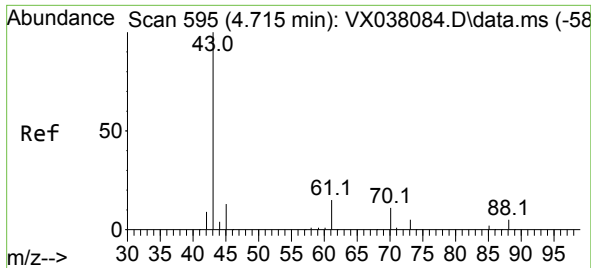
Tgt Ion:113 Resp: 57852
 Ion Ratio Lower Upper
 113 100
 111 103.2 82.9 124.3
 192 18.4 13.3 19.9



#36
 1,1-Dichloropropene
 Concen: 4.698 ug/l
 RT: 5.562 min Scan# 734
 Delta R.T. -0.128 min
 Lab File: VX038140.D
 Acq: 06 Oct 2023 18:51

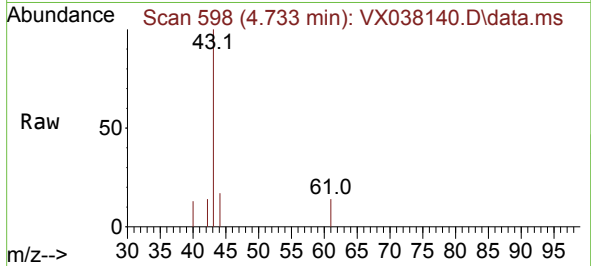
Tgt Ion: 75 Resp: 8455
 Ion Ratio Lower Upper
 75 100
 110 9.9 17.0 50.9#
 77 0.0 24.7 37.1#





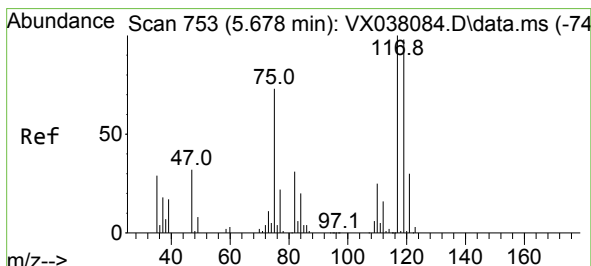
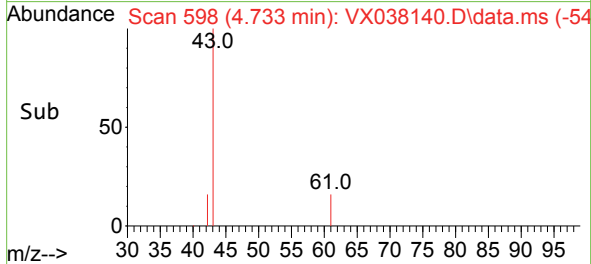
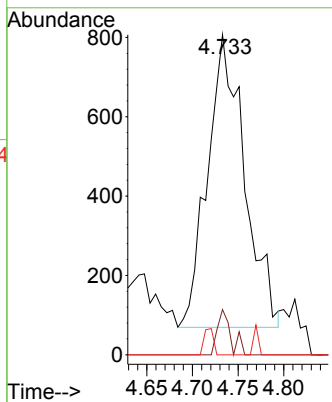
#37
 Ethyl Acetate
 Concen: 0.973 ug/l
 RT: 4.733 min Scan# 598
 Delta R.T. 0.018 min
 Lab File: VX038140.D
 Acq: 06 Oct 2023 18:51

Instrument : MSVOA_X
 ClientSampleId :



Tgt Ion: 43 Resp: 2080

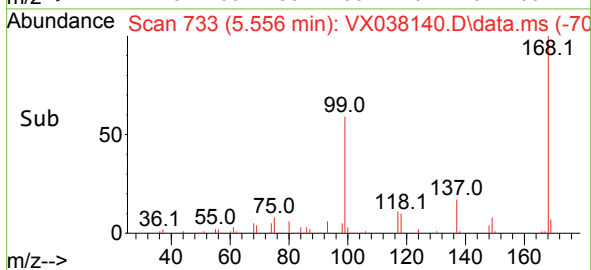
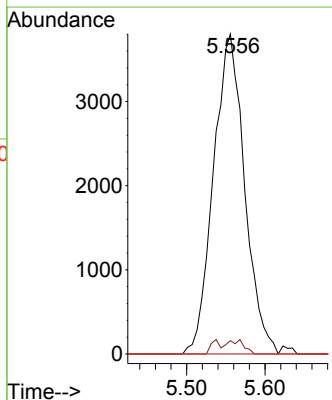
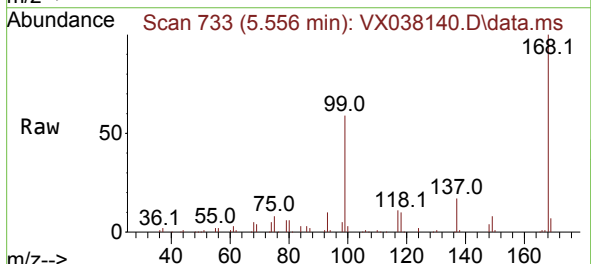
Ion	Ratio	Lower	Upper
43	100		
61	5.6	10.6	16.0#
70	2.3	8.3	12.5#

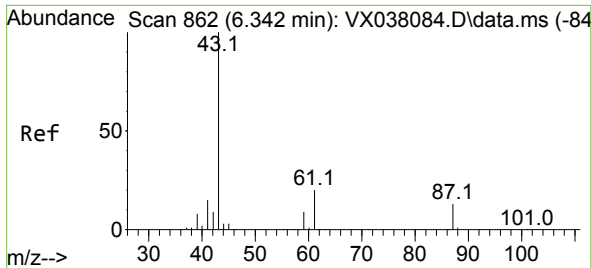


#38
 Carbon Tetrachloride
 Concen: 5.939 ug/l
 RT: 5.556 min Scan# 733
 Delta R.T. -0.122 min
 Lab File: VX038140.D
 Acq: 06 Oct 2023 18:51

Tgt Ion: 117 Resp: 10515

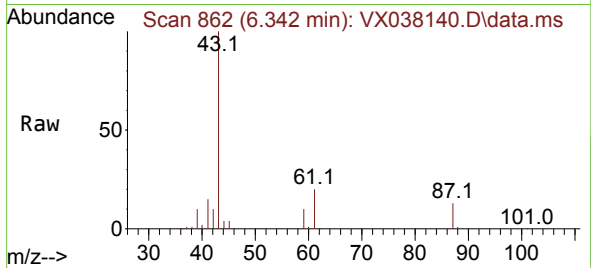
Ion	Ratio	Lower	Upper
117	100		
119	4.2	78.2	117.2#
121	0.0	24.4	36.6#



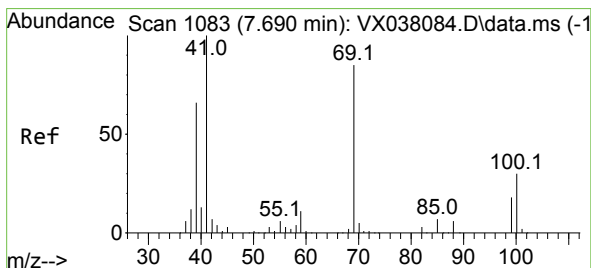
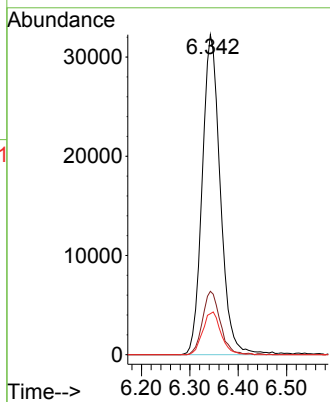
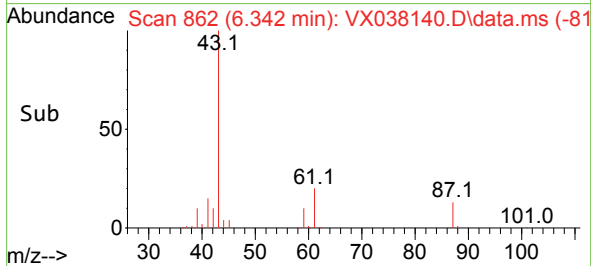


#43
 Isopropyl Acetate
 Concen: 26.298 ug/l
 RT: 6.342 min Scan# 80
 Delta R.T. 0.000 min
 Lab File: VX038140.D
 Acq: 06 Oct 2023 18:51

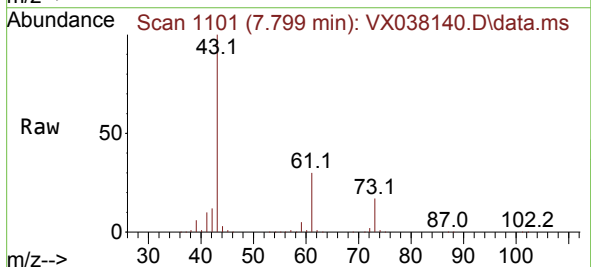
Instrument :
 MSVOA_X
 ClientSampleId :



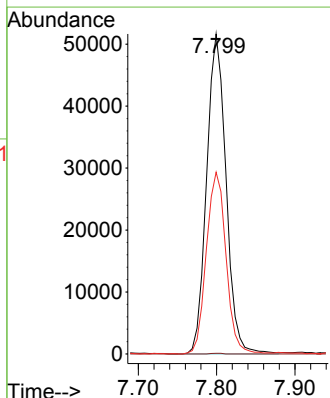
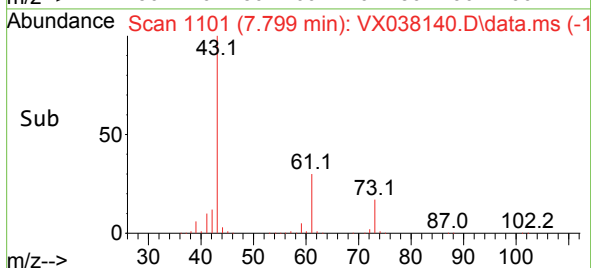
Tgt Ion: 43 Resp: 83914
 Ion Ratio Lower Upper
 43 100
 61 19.4 15.2 22.8
 87 13.5 9.8 14.6

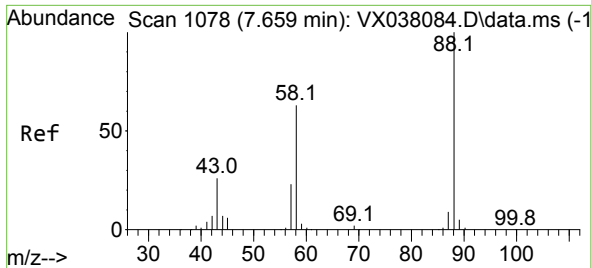


#48
 Methyl methacrylate
 Concen: 58.294 ug/l
 RT: 7.799 min Scan# 1101
 Delta R.T. 0.109 min
 Lab File: VX038140.D
 Acq: 06 Oct 2023 18:51



Tgt Ion: 41 Resp: 88799
 Ion Ratio Lower Upper
 41 100
 69 0.1 59.2 88.8#
 39 57.7 47.7 71.5

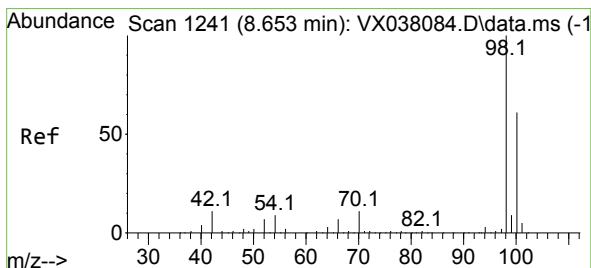
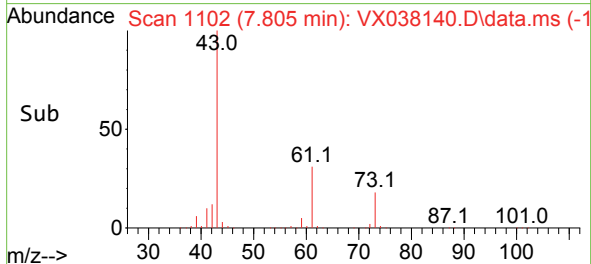
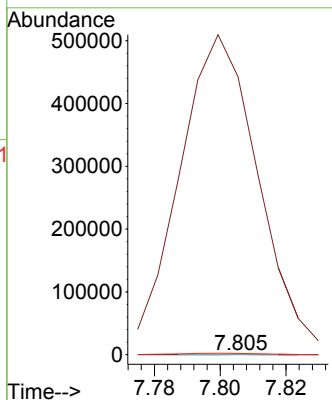
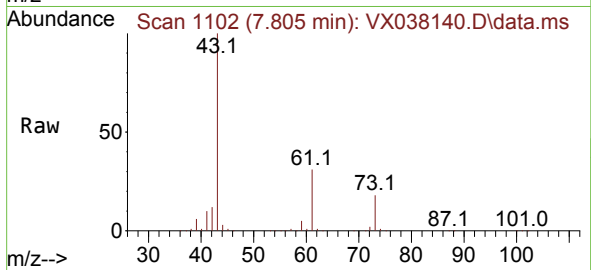




#49
 1,4-Dioxane
 Concen: 2.131 ug/l
 RT: 7.805 min Scan# 1102
 Delta R.T. 0.146 min
 Lab File: VX038140.D
 Acq: 06 Oct 2023 18:51

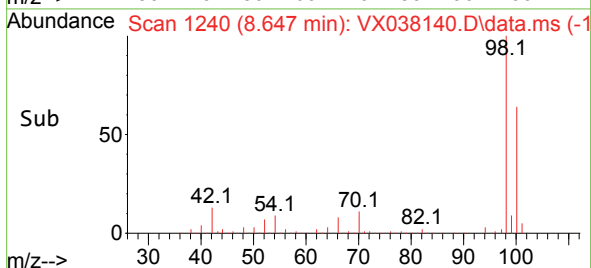
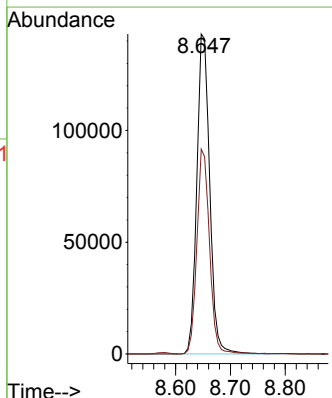
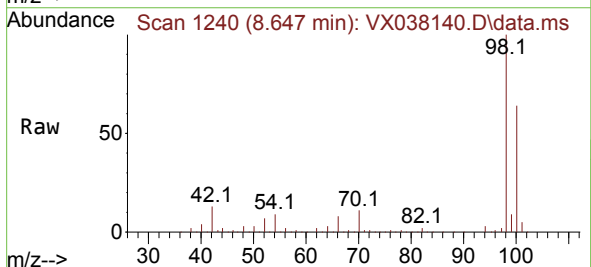
Instrument : MSVOA_X
 ClientSampleId :

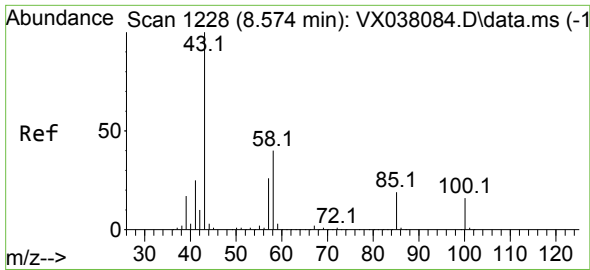
Tgt Ion: 88 Resp: 80
 Ion Ratio Lower Upper
 88 100
 43 1091811.3 0.0 0.0#
 58 5280.0 60.1 90.1#



#50
 Toluene-d8
 Concen: 47.062 ug/l
 RT: 8.647 min Scan# 1240
 Delta R.T. -0.006 min
 Lab File: VX038140.D
 Acq: 06 Oct 2023 18:51

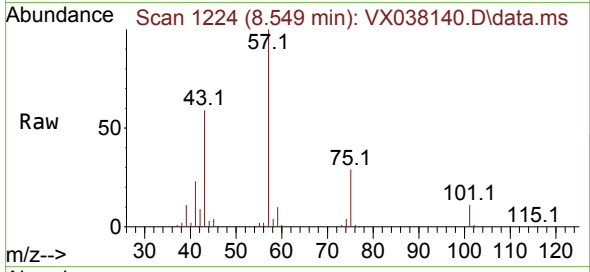
Tgt Ion: 98 Resp: 234715
 Ion Ratio Lower Upper
 98 100
 100 62.8 53.1 79.7



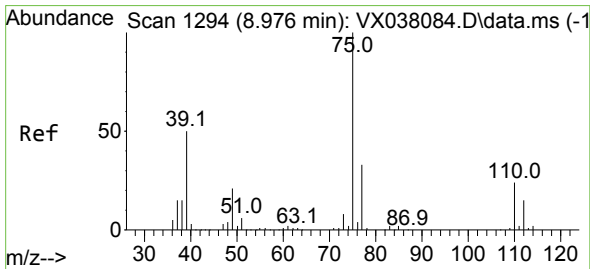
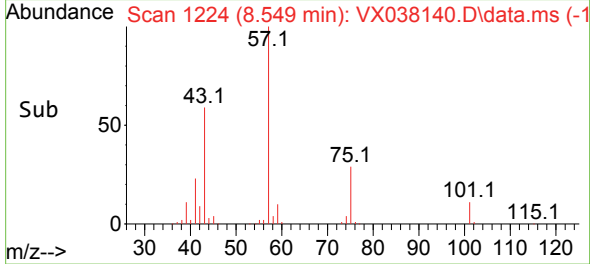
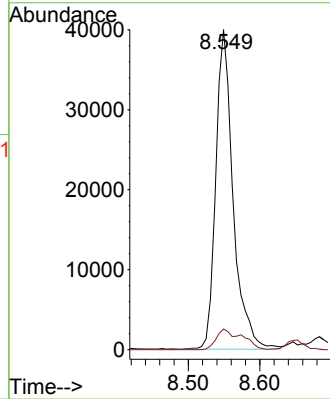


#51
 4-Methyl-2-Pentanone
 Concen: 30.514 ug/l
 RT: 8.549 min Scan# 111
 Delta R.T. -0.025 min
 Lab File: VX038140.D
 Acq: 06 Oct 2023 18:51

Instrument :
 MSVOA_X
 ClientSampleId :

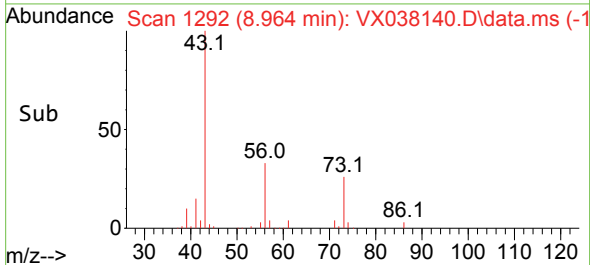
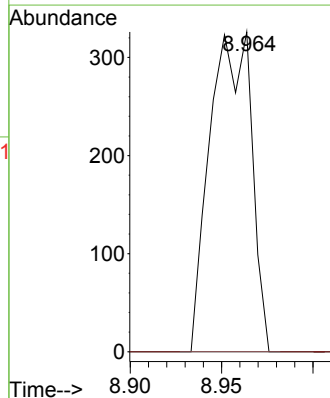
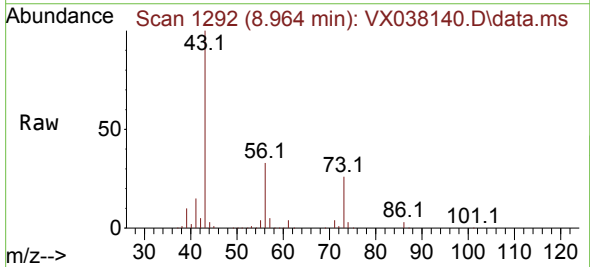


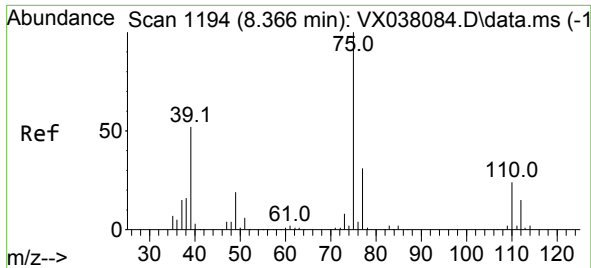
Tgt Ion: 43 Resp: 67160
 Ion Ratio Lower Upper
 43 100
 58 9.6 30.4 45.6#



#53
 t-1,3-Dichloropropene
 Concen: 0.267 ug/l
 RT: 8.964 min Scan# 1292
 Delta R.T. -0.012 min
 Lab File: VX038140.D
 Acq: 06 Oct 2023 18:51

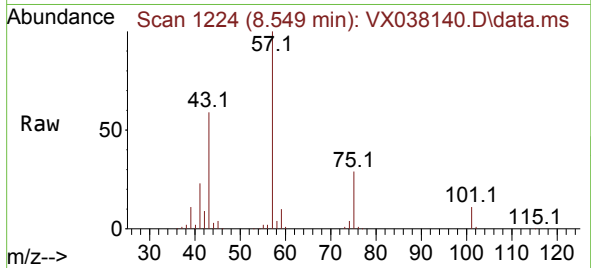
Tgt Ion: 75 Resp: 515
 Ion Ratio Lower Upper
 75 100
 77 0.0 25.7 38.5#



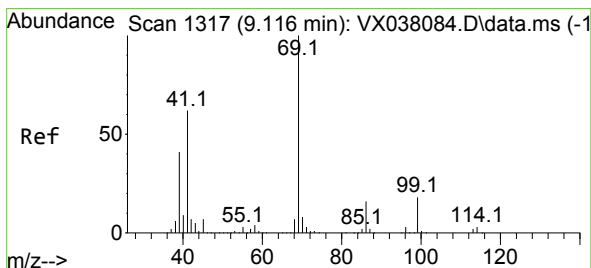
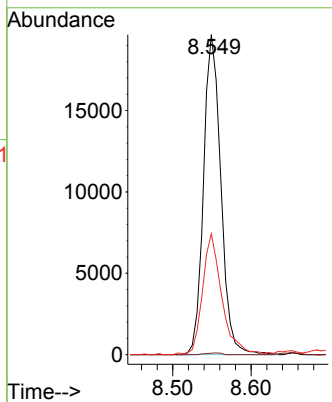
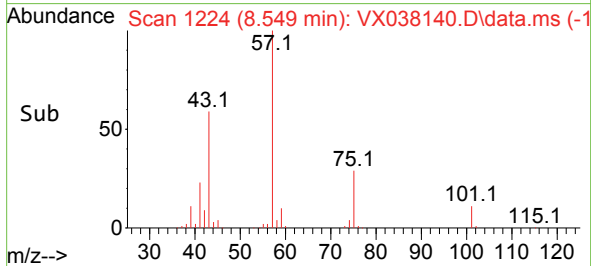


#54
 cis-1,3-Dichloropropene
 Concen: 14.903 ug/l
 RT: 8.549 min Scan# 1194
 Delta R.T. 0.183 min
 Lab File: VX038140.D
 Acq: 06 Oct 2023 18:51

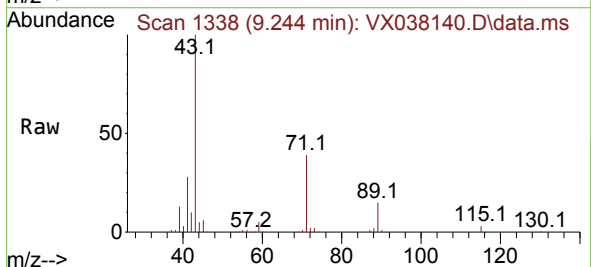
Instrument : MSVOA_X
 ClientSampleId :



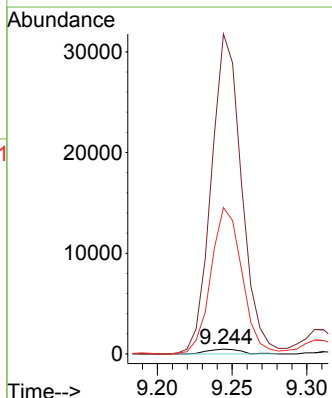
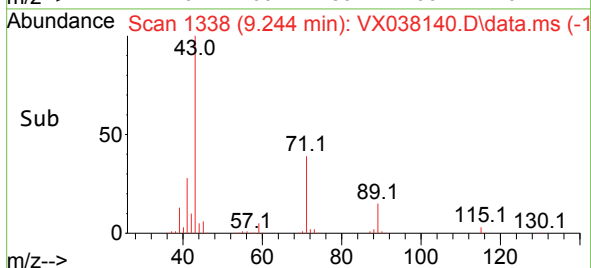
Tgt Ion: 75 Resp: 30212
 Ion Ratio Lower Upper
 75 100
 77 0.5 25.3 37.9#
 39 37.2 46.7 70.1#

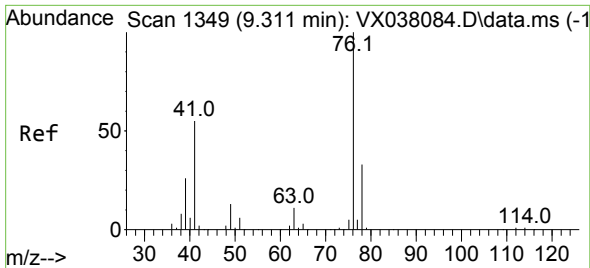


#56
 Ethyl methacrylate
 Concen: 0.347 ug/l
 RT: 9.244 min Scan# 1338
 Delta R.T. 0.128 min
 Lab File: VX038140.D
 Acq: 06 Oct 2023 18:51



Tgt Ion: 69 Resp: 746
 Ion Ratio Lower Upper
 69 100
 41 6037.8 56.8 85.2#
 39 2813.5 32.0 48.0#

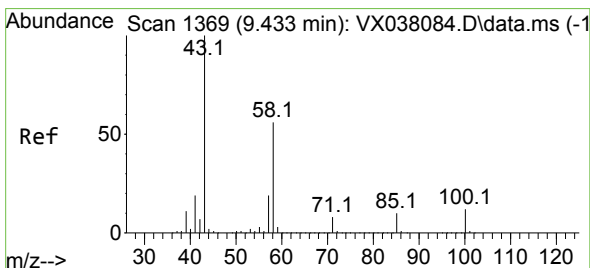
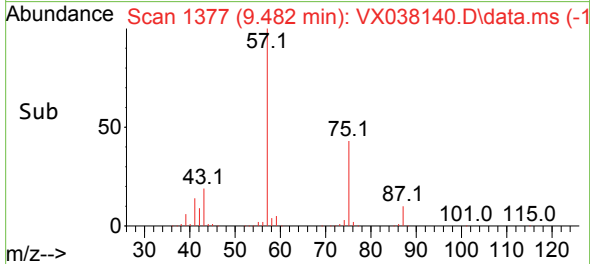
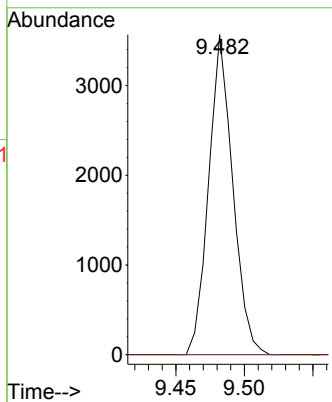
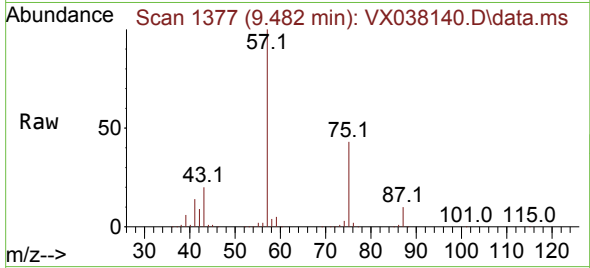




#57
 1,3-Dichloropropane
 Concen: 1.925 ug/l
 RT: 9.482 min Scan# 1377
 Delta R.T. 0.171 min
 Lab File: VX038140.D
 Acq: 06 Oct 2023 18:51

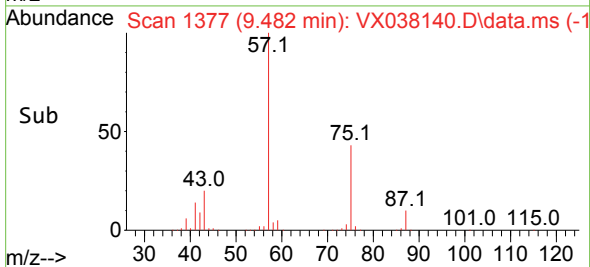
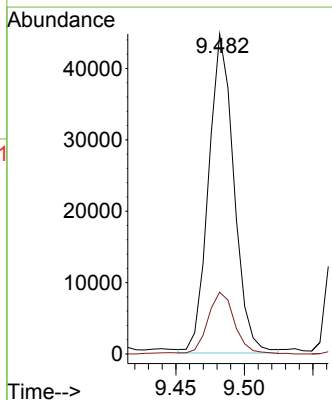
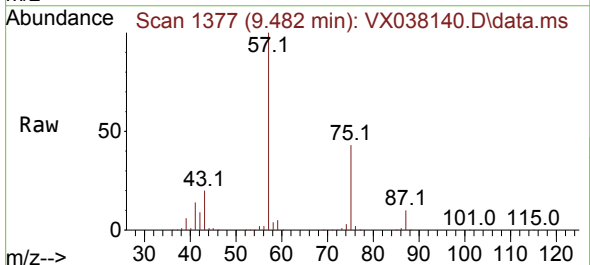
Instrument : MSVOA_X
 ClientSampleId :

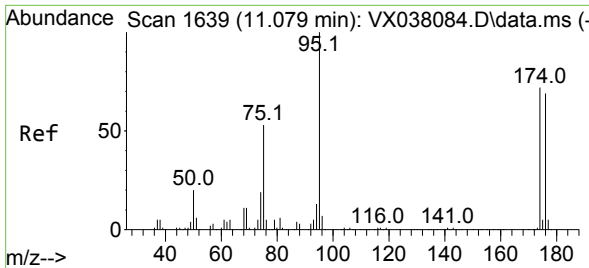
Tgt Ion: 76 Resp: 4367
 Ion Ratio Lower Upper
 76 100
 78 0.0 26.1 39.1#



#59
 2-Hexanone
 Concen: 32.570 ug/l
 RT: 9.482 min Scan# 1377
 Delta R.T. 0.049 min
 Lab File: VX038140.D
 Acq: 06 Oct 2023 18:51

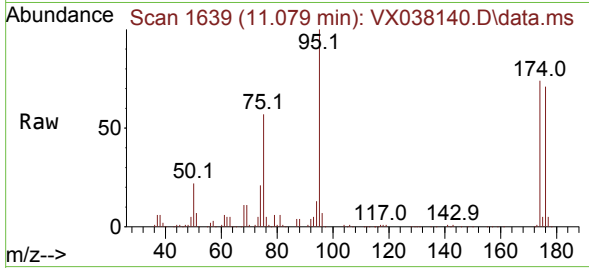
Tgt Ion: 43 Resp: 57630
 Ion Ratio Lower Upper
 43 100
 58 20.8 26.2 78.5#



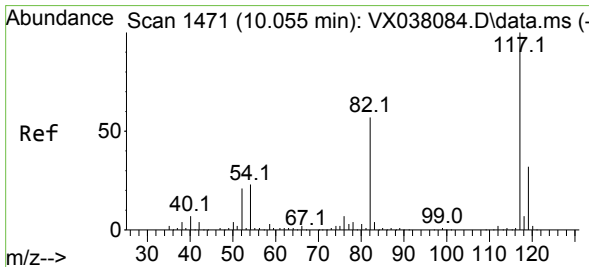
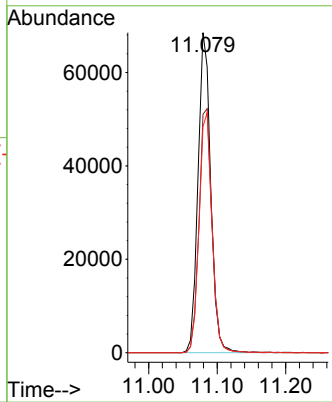
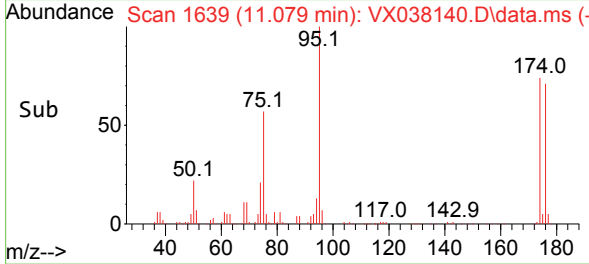


#62
 4-Bromofluorobenzene
 Concen: 46.715 ug/l
 RT: 11.079 min Scan# 1639
 Delta R.T. 0.000 min
 Lab File: VX038140.D
 Acq: 06 Oct 2023 18:51

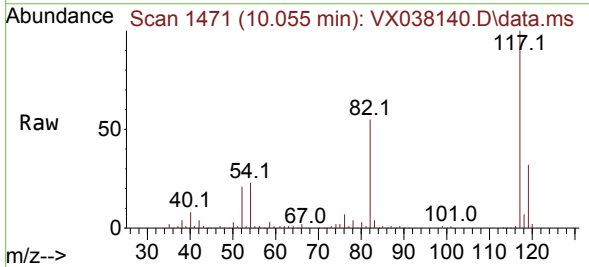
Instrument : MSVOA_X
 ClientSampleId :



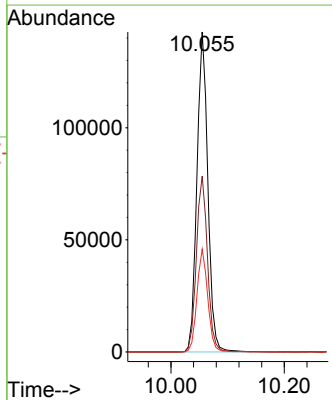
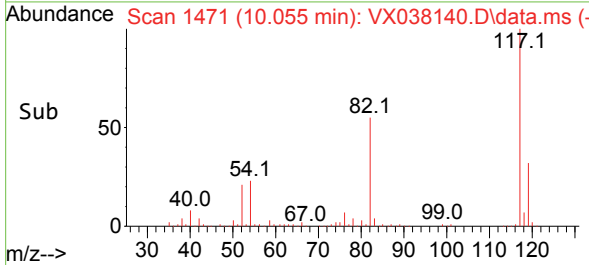
Tgt Ion: 95 Resp: 88326
 Ion Ratio Lower Upper
 95 100
 174 78.7 0.0 135.6
 176 76.1 0.0 131.0

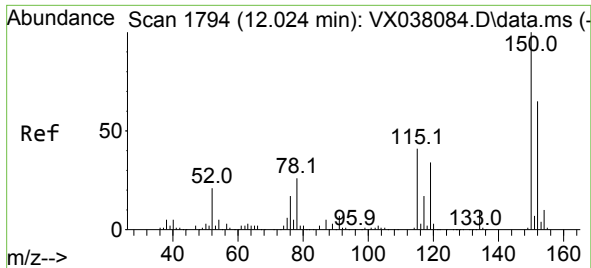


#63
 Chlorobenzene-d5
 Concen: 50.000 ug/l
 RT: 10.055 min Scan# 1471
 Delta R.T. 0.000 min
 Lab File: VX038140.D
 Acq: 06 Oct 2023 18:51



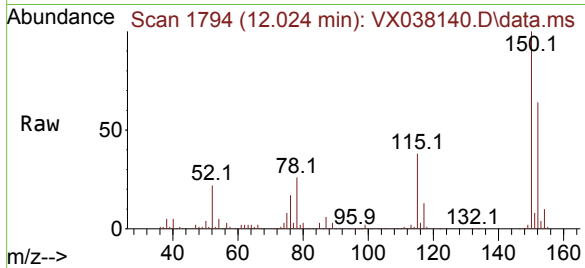
Tgt Ion: 117 Resp: 190442
 Ion Ratio Lower Upper
 117 100
 82 54.9 46.2 69.4
 119 32.1 25.5 38.3



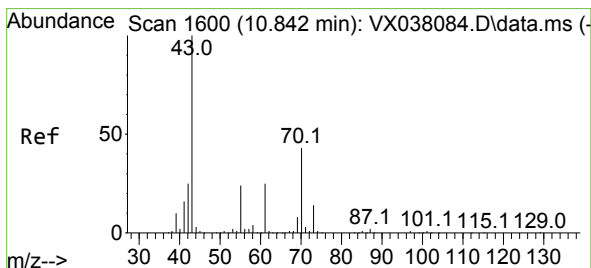
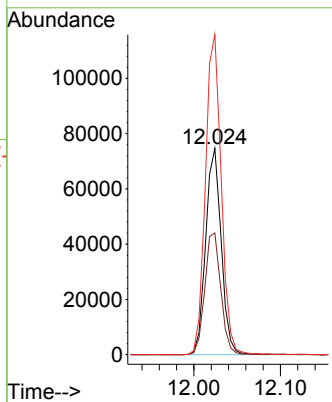
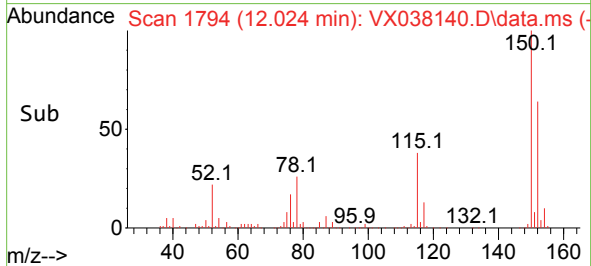


#72
 1,4-Dichlorobenzene-d4
 Concen: 50.000 ug/l
 RT: 12.024 min Scan# 1
 Delta R.T. 0.000 min
 Lab File: VX038140.D
 Acq: 06 Oct 2023 18:51

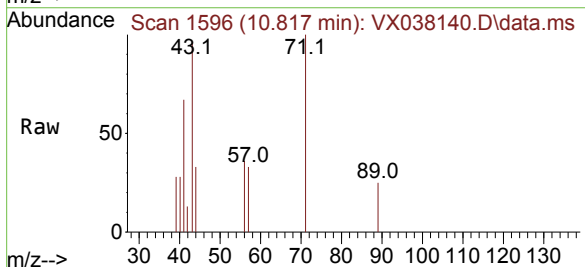
Instrument :
 MSVOA_X
 ClientSampleId :



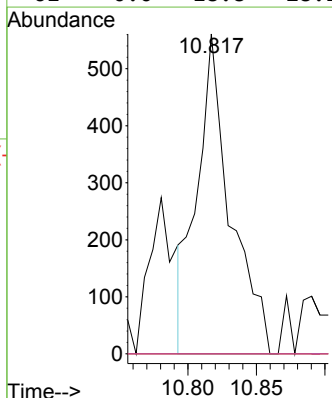
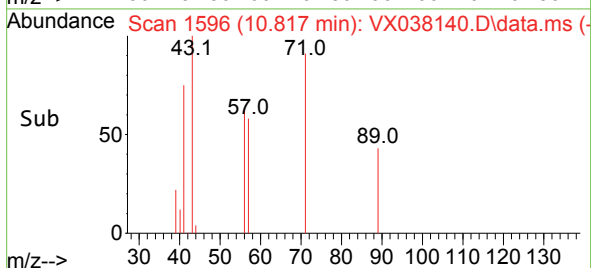
Tgt Ion:152 Resp: 93186
 Ion Ratio Lower Upper
 152 100
 115 60.8 43.3 129.9
 150 157.5 0.0 345.0

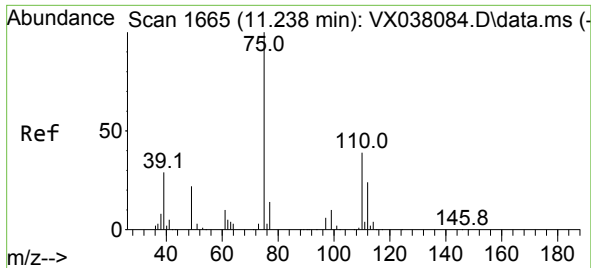


#74
 N-amy1 acetate
 Concen: 0.356 ug/l
 RT: 10.817 min Scan# 1596
 Delta R.T. -0.025 min
 Lab File: VX038140.D
 Acq: 06 Oct 2023 18:51



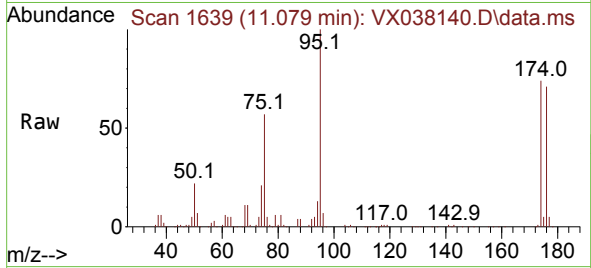
Tgt Ion: 43 Resp: 950
 Ion Ratio Lower Upper
 43 100
 70 0.0 32.9 49.3#
 55 0.0 19.3 28.9#
 61 0.0 18.8 28.2#



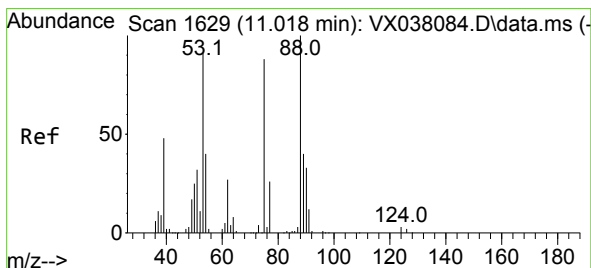
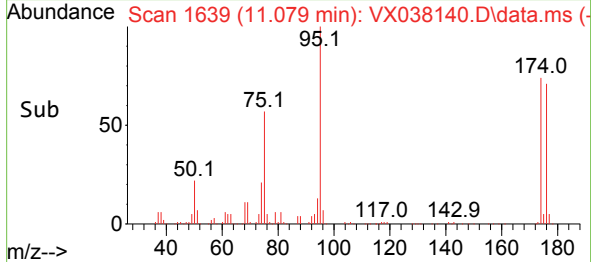
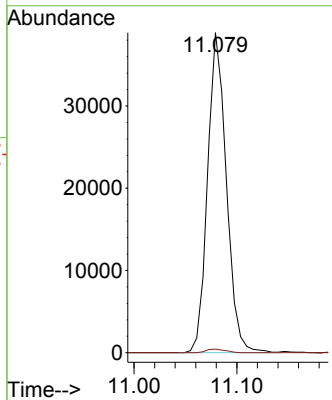


#76
 1,2,3-Trichloropropane
 Concen: 23.322 ug/l
 RT: 11.079 min Scan# 1639
 Delta R.T. -0.159 min
 Lab File: VX038140.D
 Acq: 06 Oct 2023 18:51

Instrument : MSVOA_X
 ClientSampleId :



Tgt Ion: 75 Resp: 49406
 Ion Ratio Lower Upper
 75 100
 77 1.1 19.1 57.5#



#81
 trans-1,4-Dichloro-2-butene
 Concen: 66.638 ug/l
 RT: 11.079 min Scan# 1639
 Delta R.T. 0.061 min
 Lab File: VX038140.D
 Acq: 06 Oct 2023 18:51

Tgt Ion: 75 Resp: 49406
 Ion Ratio Lower Upper
 75 100
 53 0.0 90.5 135.7#
 89 0.0 36.9 55.3#

