

Data Path : Z:\voasrv\HPCHEM1\MSVOA\_X\Data\VX100623\  
 Data File : VX038155.D  
 Acq On : 07 Oct 2023 03:42  
 Operator : JC/MD  
 Sample : 04802-01  
 Misc : 5.0mL/MSVOA\_X/WATER  
 ALS Vial : 49 Sample Multiplier: 1

Instrument :  
 MSVOA\_X  
 ClientSampleId :  
 231005065-01

Quant Time: Oct 07 06:37:16 2023  
 Quant Method : Z:\voasrv\HPCHEM1\MSVOA\_X\Method\624X100623W.M  
 Quant Title : METHOD 624 VOLATILE ORGANIC ANALYSIS  
 QLast Update : Sat Oct 07 06:30:32 2023  
 Response via : Initial Calibration

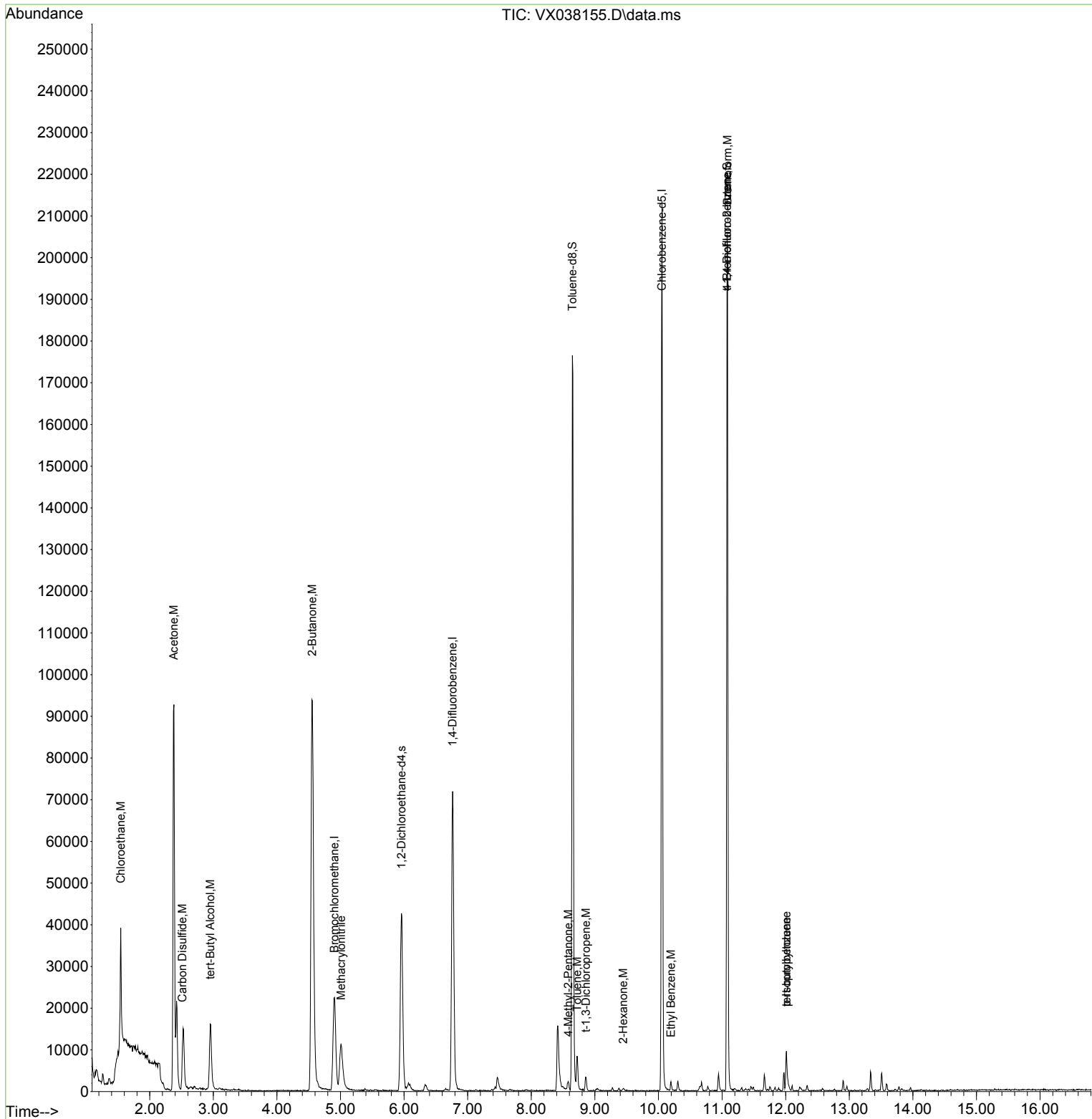
Compound	R.T.	QIon	Response	Conc	Units	Dev(Min)
-----						
Internal Standards						
1) Bromochloromethane	4.903	128	9530	30.000	ug/l	0.00
28) 1,4-Difluorobenzene	6.763	114	73507	30.000	ug/l	0.00
57) Chlorobenzene-d5	10.055	117	92831	30.000	ug/l	0.00
System Monitoring Compounds						
27) 1,2-Dichloroethane-d4	5.958	65	41093	31.563	ug/l	0.00
Spiked Amount	30.000	Range 91 - 110	Recovery	=	105.200%	
60) 4-Bromofluorobenzene	11.079	95	52785	27.296	ug/l	0.00
Spiked Amount	30.000	Range 63 - 112	Recovery	=	91.000%	
63) Toluene-d8	8.647	98	108899	30.294	ug/l	0.00
Spiked Amount	30.000	Range 91 - 112	Recovery	=	100.967%	
Target Compounds						
						Qvalue
6) Chloroethane	1.544	64	10252	9.052	ug/l #	56
15) Acetone	2.380	58	31959	142.689	ug/l	94
16) Carbon Disulfide	2.514	76	6698	2.377	ug/l	98
23) tert-Butyl Alcohol	2.953	59	15555	42.074	ug/l #	1
30) 2-Butanone	4.556	43	157808	126.243	ug/l	98
35) Methacrylonitrile	5.007	41	4461	3.812	ug/l #	50
48) t-1,3-Dichloropropene	8.860	75	1054	0.508	ug/l #	41
56) Bromoform	11.085	173	470	0.399	ug/l #	1
58) 4-Methyl-2-Pentanone	8.580	43	1375	0.592	ug/l #	88
59) 2-Hexanone	9.445	43	564	0.302	ug/l #	68
62) Toluene	8.720	91	5595	0.905	ug/l	100
66) Ethyl Benzene	10.195	91	1461	0.208	ug/l	94
77) t-1,4-Dichloro-2-butene	11.079	75	30146	47.452	ug/l #	7
79) tert-butylbenzene	12.012	119	3783	0.655	ug/l	65
82) p-Isopropyltoluene	12.012	119	3783	0.605	ug/l	97
-----						

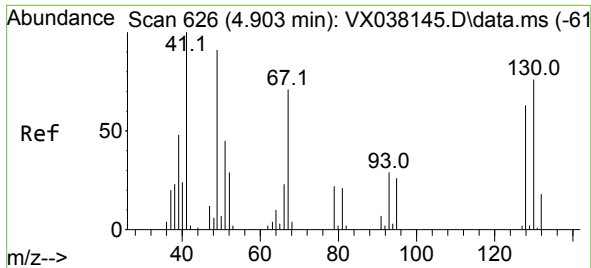
(#) = qualifier out of range (m) = manual integration (+) = signals summed

Data Path : Z:\voasrv\HPCHEM1\MSVOA\_X\Data\VX100623\  
 Data File : VX038155.D  
 Acq On : 07 Oct 2023 03:42  
 Operator : JC/MD  
 Sample : 04802-01  
 Misc : 5.0mL/MSVOA\_X/WATER  
 ALS Vial : 49 Sample Multiplier: 1

Instrument :  
 MSVOA\_X  
 ClientSampleId :  
 231005065-01

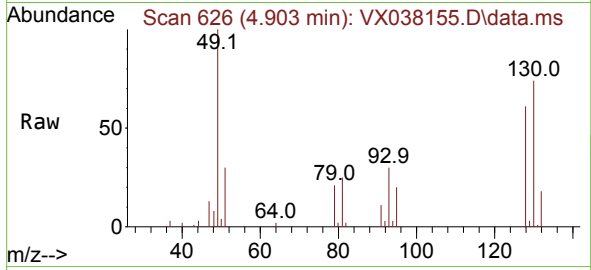
Quant Time: Oct 07 06:37:16 2023  
 Quant Method : Z:\voasrv\HPCHEM1\MSVOA\_X\Method\624X100623W.M  
 Quant Title : METHOD 624 VOLATILE ORGANIC ANALYSIS  
 QLast Update : Sat Oct 07 06:30:32 2023  
 Response via : Initial Calibration





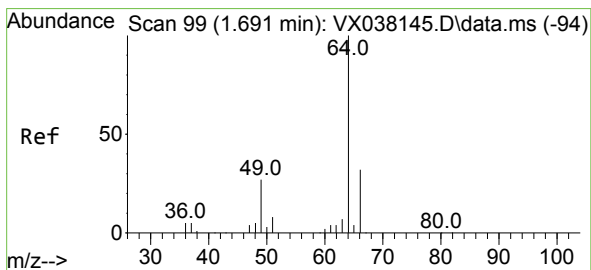
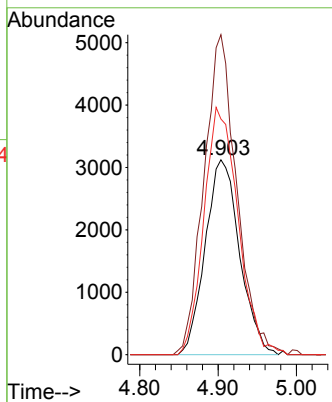
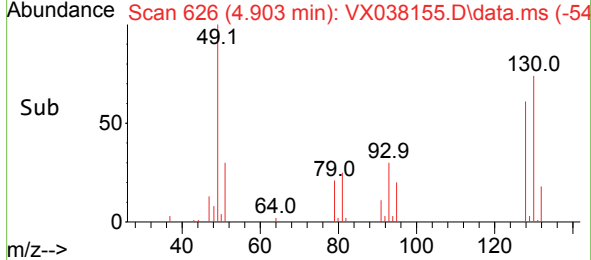
#1  
 Bromochloromethane  
 Concen: 30.000 ug/l  
 RT: 4.903 min Scan# 61  
 Delta R.T. 0.000 min  
 Lab File: VX038155.D  
 Acq: 07 Oct 2023 03:42

Instrument :  
 MSVOA\_X  
 ClientSampleId :  
 231005065-01



Tgt Ion:128 Resp: 9530

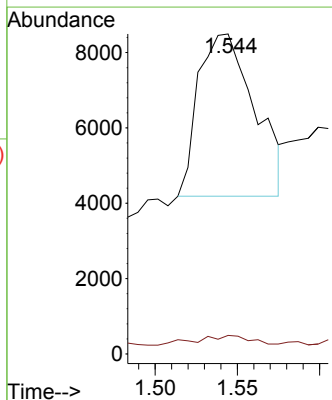
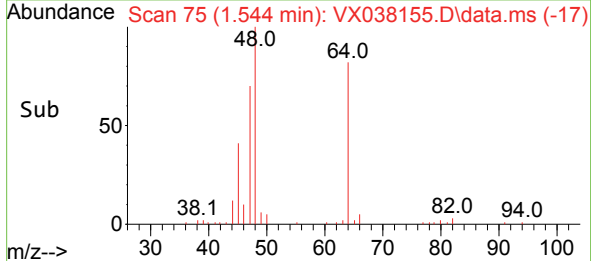
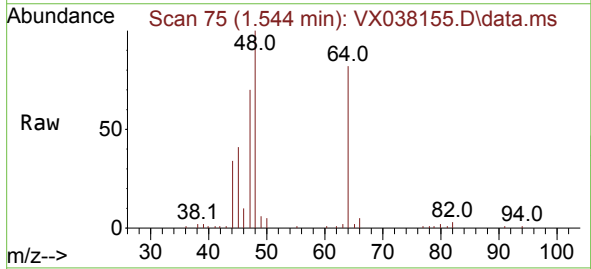
Ion	Ratio	Lower	Upper
128	100		
49	156.3	0.0	406.3
130	124.8	0.0	328.0

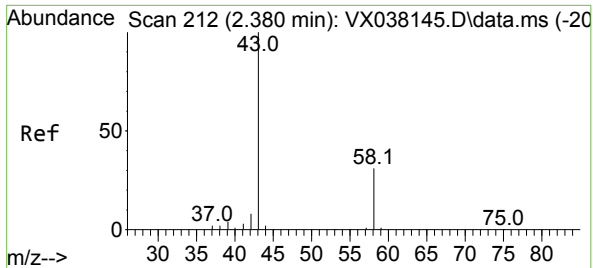


#6  
 Chloroethane  
 Concen: 9.052 ug/l  
 RT: 1.544 min Scan# 75  
 Delta R.T. -0.146 min  
 Lab File: VX038155.D  
 Acq: 07 Oct 2023 03:42

Tgt Ion: 64 Resp: 10252

Ion	Ratio	Lower	Upper
64	100		
66	5.3	23.1	34.7#

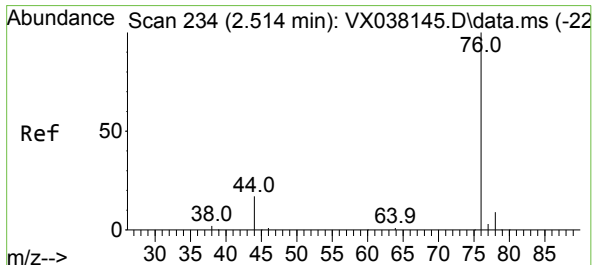
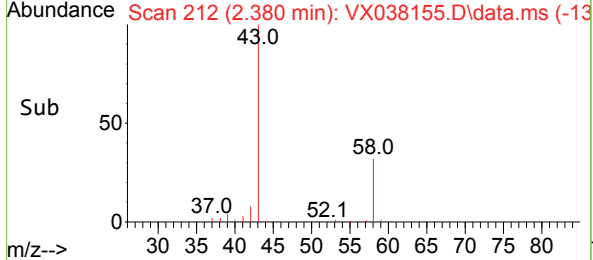
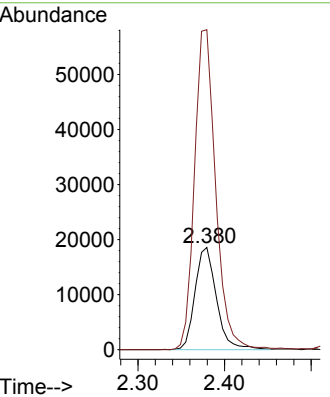
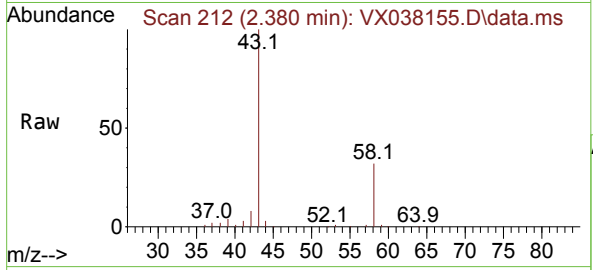




#15  
 Acetone  
 Concen: 142.689 ug/l  
 RT: 2.380 min Scan# 215  
 Delta R.T. 0.000 min  
 Lab File: VX038155.D  
 Acq: 07 Oct 2023 03:42

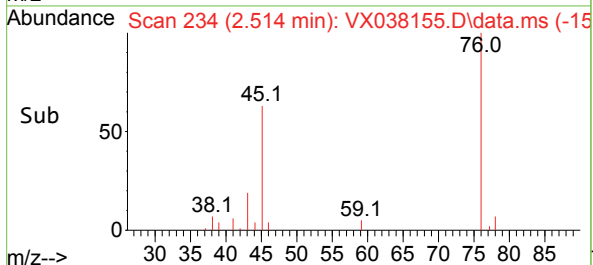
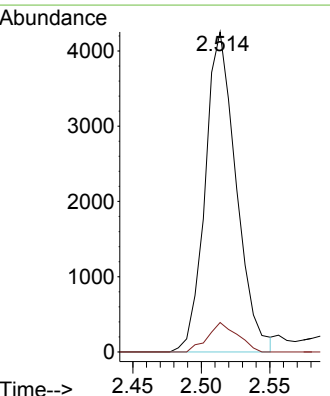
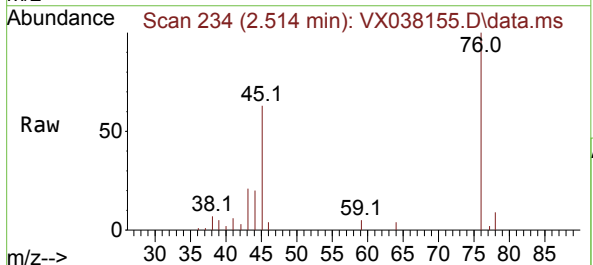
Instrument : MSVOA\_X  
 ClientSampleId : 231005065-01

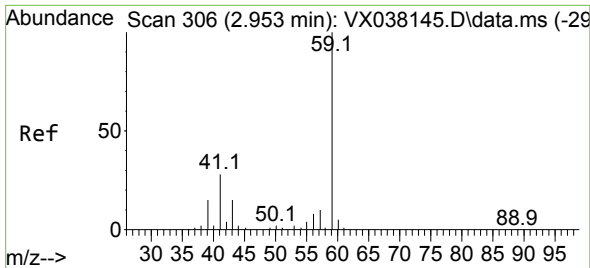
Tgt Ion: 58 Resp: 31959  
 Ion Ratio Lower Upper  
 58 100  
 43 313.0 261.0 391.4



#16  
 Carbon Disulfide  
 Concen: 2.377 ug/l  
 RT: 2.514 min Scan# 234  
 Delta R.T. 0.000 min  
 Lab File: VX038155.D  
 Acq: 07 Oct 2023 03:42

Tgt Ion: 76 Resp: 6698  
 Ion Ratio Lower Upper  
 76 100  
 78 9.2 8.0 12.0

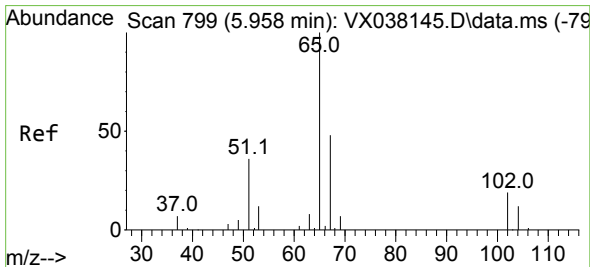
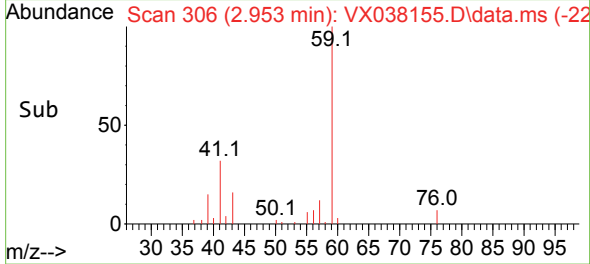
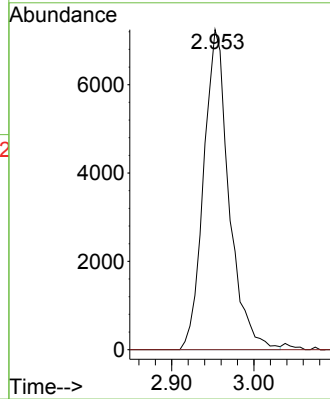
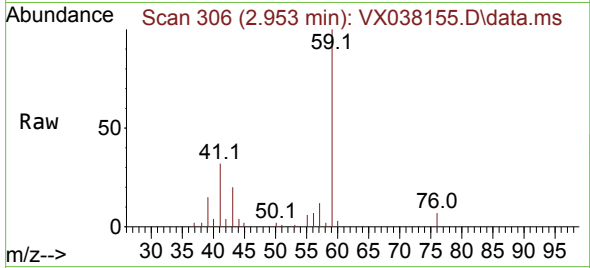




#23  
 tert-Butyl Alcohol  
 Concen: 42.074 ug/l  
 RT: 2.953 min Scan# 306  
 Delta R.T. 0.000 min  
 Lab File: VX038155.D  
 Acq: 07 Oct 2023 03:42

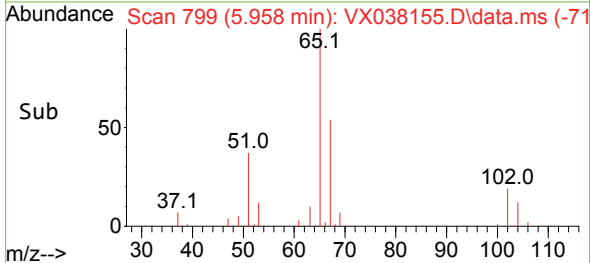
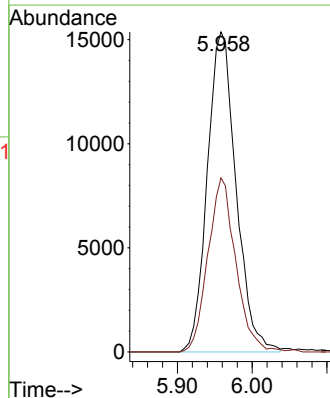
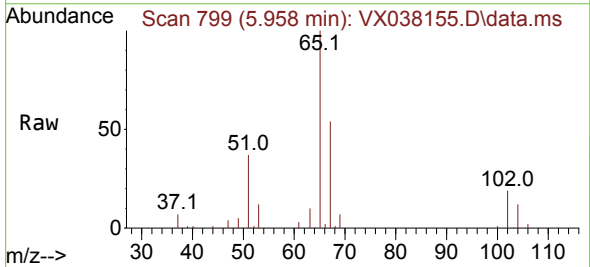
Instrument : MSVOA\_X  
 ClientSampleId : 231005065-01

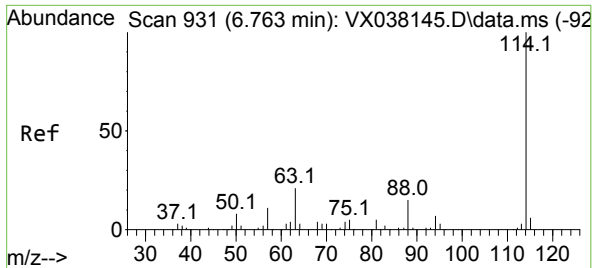
Tgt Ion: 59 Resp: 15555  
 Ion Ratio Lower Upper  
 59 100  
 52 0.0 142.6 213.8#



#27  
 1,2-Dichloroethane-d4  
 Concen: 31.563 ug/l  
 RT: 5.958 min Scan# 799  
 Delta R.T. 0.000 min  
 Lab File: VX038155.D  
 Acq: 07 Oct 2023 03:42

Tgt Ion: 65 Resp: 41093  
 Ion Ratio Lower Upper  
 65 100  
 67 52.2 42.1 63.1



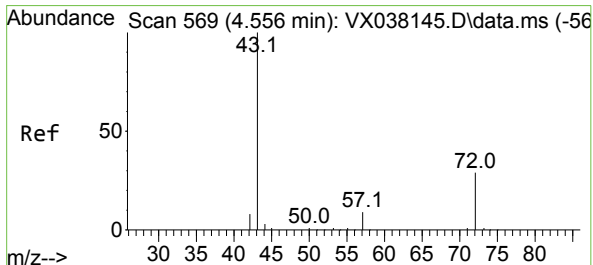
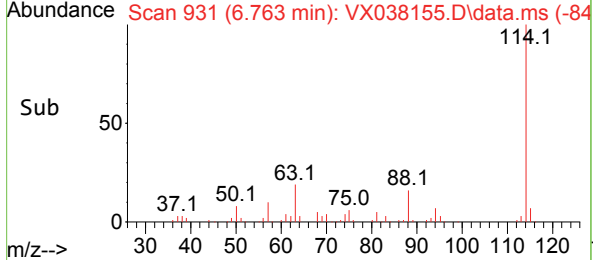
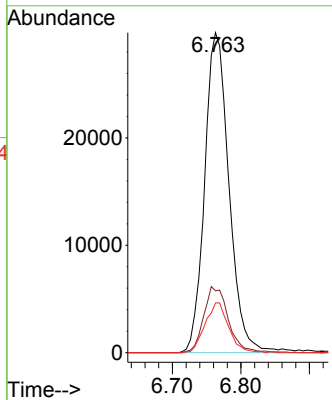
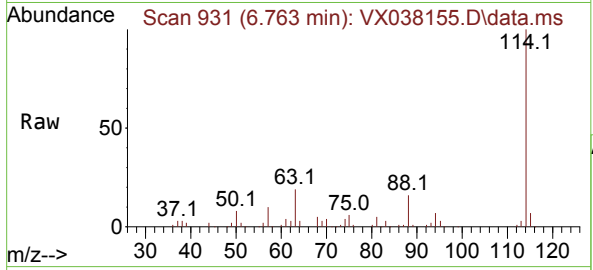


#28  
 1,4-Difluorobenzene  
 Concen: 30.000 ug/l  
 RT: 6.763 min Scan# 91  
 Delta R.T. 0.000 min  
 Lab File: VX038155.D  
 Acq: 07 Oct 2023 03:42

Instrument : MSVOA\_X  
 ClientSampleId : 231005065-01

Tgt Ion:114 Resp: 73507

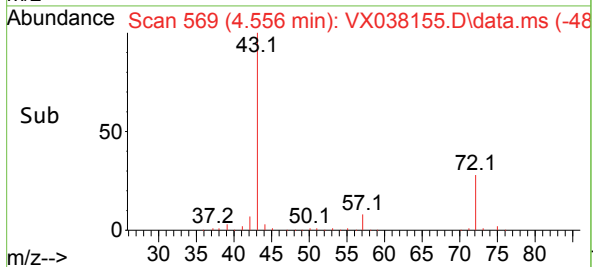
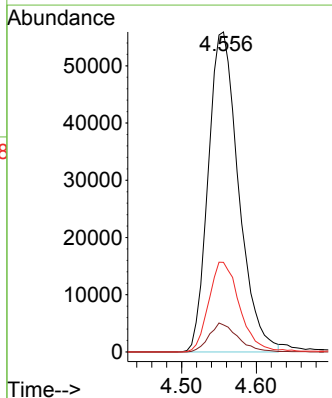
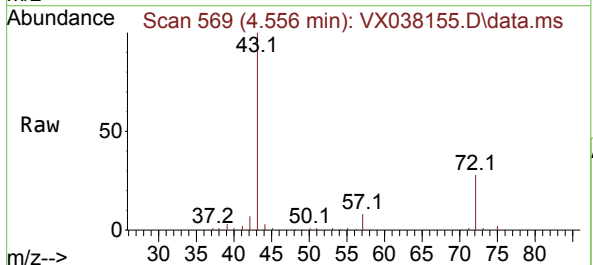
Ion	Ratio	Lower	Upper
114	100		
63	20.6	16.6	24.8
88	15.1	12.9	19.3

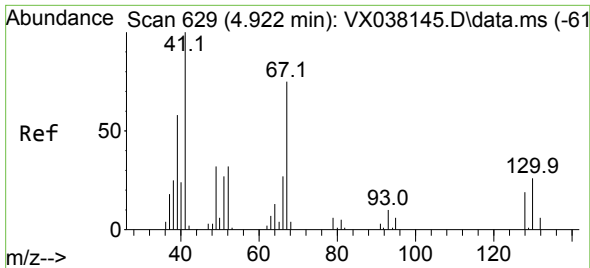


#30  
 2-Butanone  
 Concen: 126.243 ug/l  
 RT: 4.556 min Scan# 569  
 Delta R.T. 0.000 min  
 Lab File: VX038155.D  
 Acq: 07 Oct 2023 03:42

Tgt Ion: 43 Resp: 157808

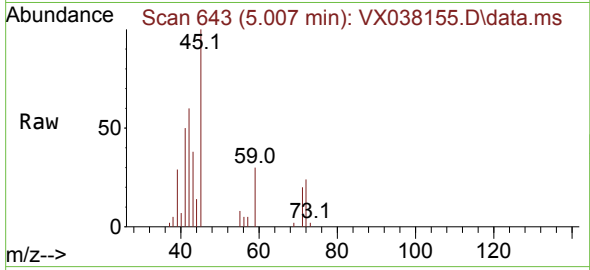
Ion	Ratio	Lower	Upper
43	100		
57	8.6	6.4	9.6
72	28.3	21.6	32.4





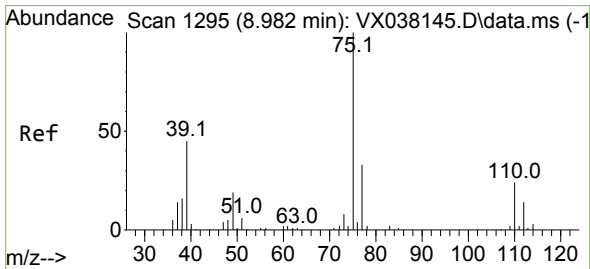
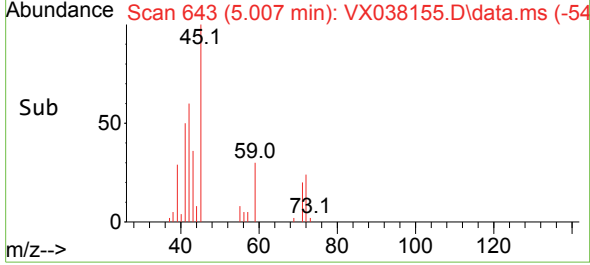
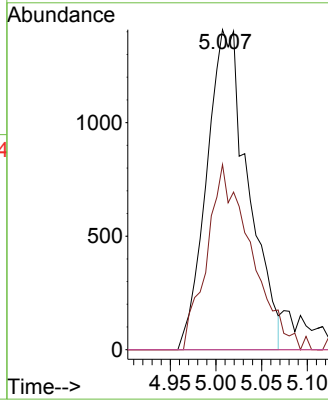
#35  
 Methacrylonitrile  
 Concen: 3.812 ug/l  
 RT: 5.007 min Scan# 64  
 Delta R.T. 0.085 min  
 Lab File: VX038155.D  
 Acq: 07 Oct 2023 03:42

Instrument :  
 MSVOA\_X  
 ClientSampleId :  
 231005065-01



Tgt Ion: 41 Resp: 4461

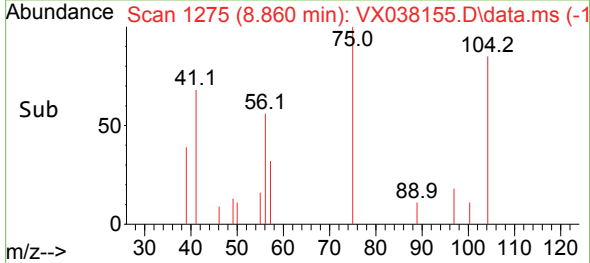
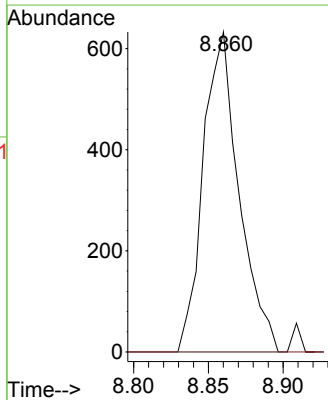
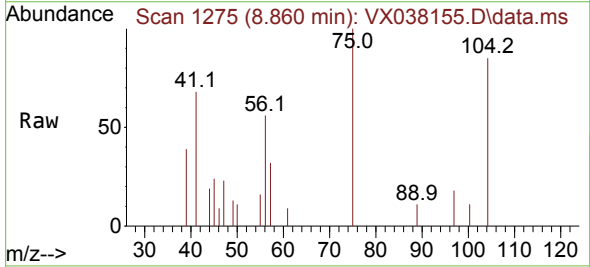
Ion	Ratio	Lower	Upper
41	100		
39	57.8	28.2	84.7
67	0.0	35.0	105.1#
52	0.0	15.6	46.7#

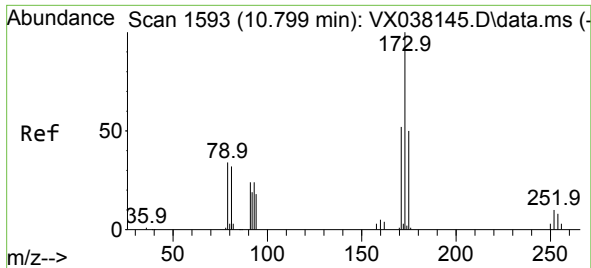


#48  
 t-1,3-Dichloropropene  
 Concen: 0.508 ug/l  
 RT: 8.860 min Scan# 1275  
 Delta R.T. -0.122 min  
 Lab File: VX038155.D  
 Acq: 07 Oct 2023 03:42

Tgt Ion: 75 Resp: 1054

Ion	Ratio	Lower	Upper
75	100		
77	0.0	26.8	40.2#



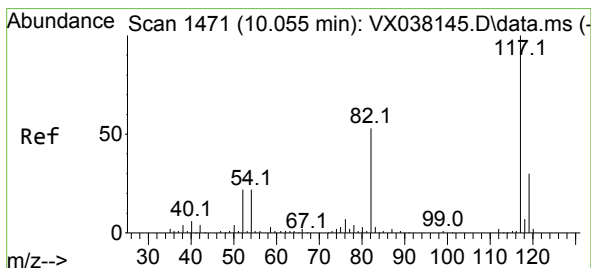
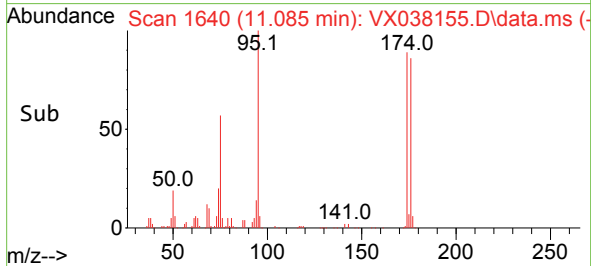
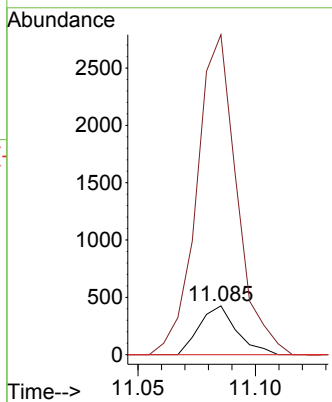
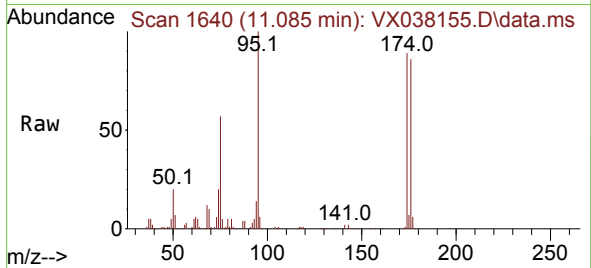


#56  
 Bromoform  
 Concen: 0.399 ug/l  
 RT: 11.085 min Scan# 11085  
 Delta R.T. 0.287 min  
 Lab File: VX038155.D  
 Acq: 07 Oct 2023 03:42

Instrument : MSVOA\_X  
 ClientSampleId : 231005065-01

Tgt Ion:173 Resp: 470

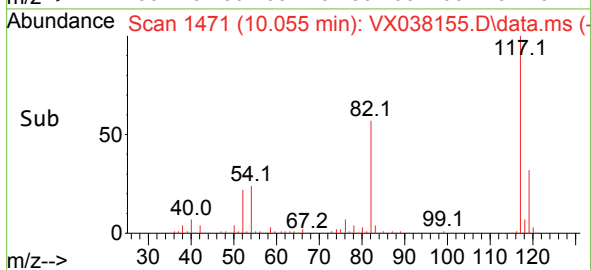
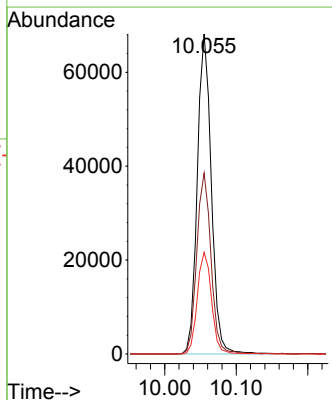
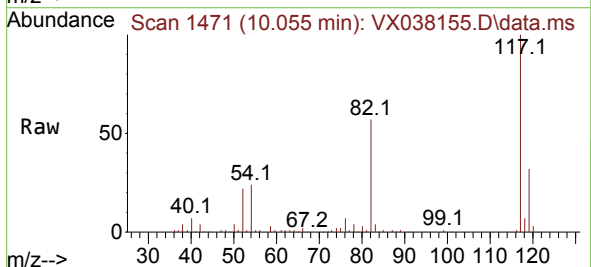
Ion	Ratio	Lower	Upper
173	100		
175	706.2	38.1	57.1#
254	0.0	6.7	10.1#



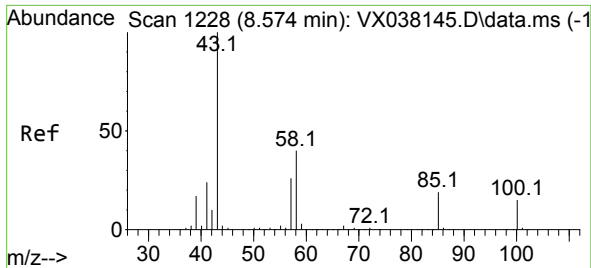
#57  
 Chlorobenzene-d5  
 Concen: 30.000 ug/l  
 RT: 10.055 min Scan# 1471  
 Delta R.T. 0.000 min  
 Lab File: VX038155.D  
 Acq: 07 Oct 2023 03:42

Tgt Ion:117 Resp: 92831

Ion	Ratio	Lower	Upper
117	100		
82	57.3	44.7	67.1
119	32.1	25.6	38.4



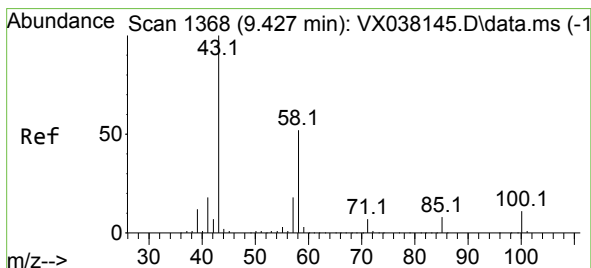
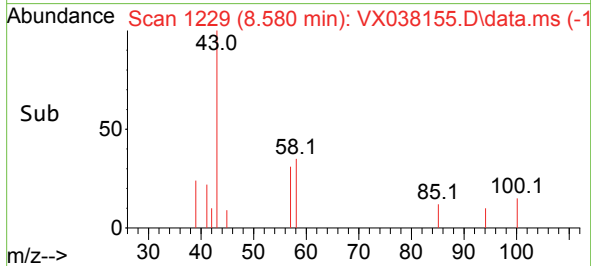
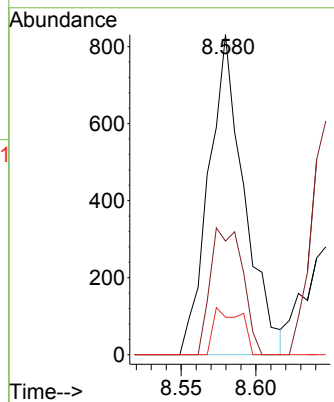
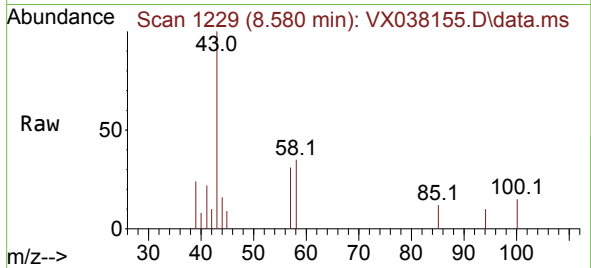




#58  
 4-Methyl-2-Pentanone  
 Concen: 0.592 ug/l  
 RT: 8.580 min Scan# 1111  
 Delta R.T. 0.006 min  
 Lab File: VX038155.D  
 Acq: 07 Oct 2023 03:42

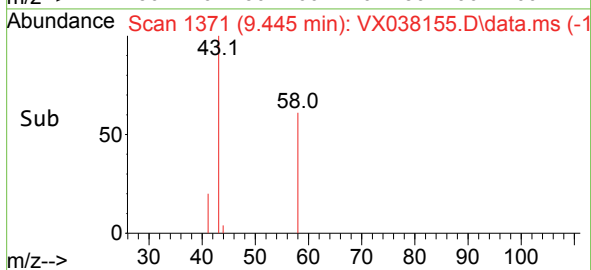
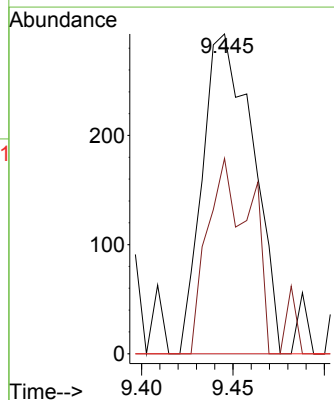
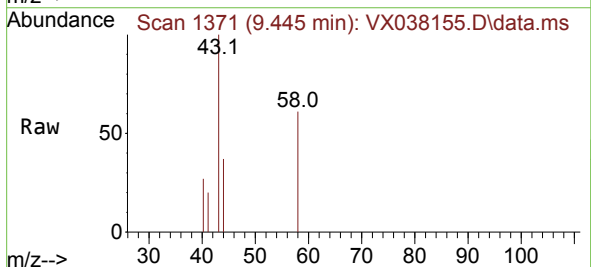
Instrument : MSVOA\_X  
 ClientSampleId : 231005065-01

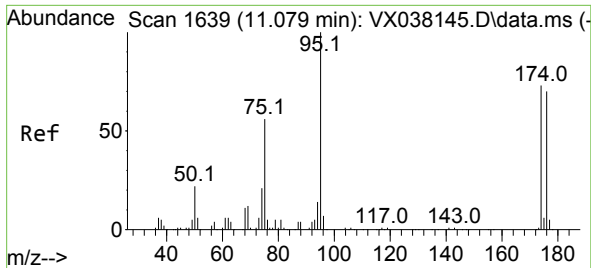
Tgt Ion	Resp	Lower	Upper
43	1375		
43	100		
58	36.0	30.9	46.3
85	5.8	14.4	21.6#



#59  
 2-Hexanone  
 Concen: 0.302 ug/l  
 RT: 9.445 min Scan# 1371  
 Delta R.T. 0.018 min  
 Lab File: VX038155.D  
 Acq: 07 Oct 2023 03:42

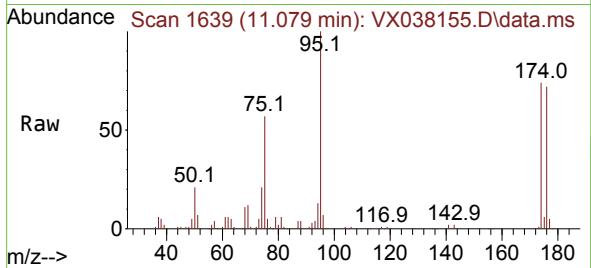
Tgt Ion	Resp	Lower	Upper
43	564		
43	100		
58	34.0	43.4	65.2#
57	0.0	15.1	22.7#



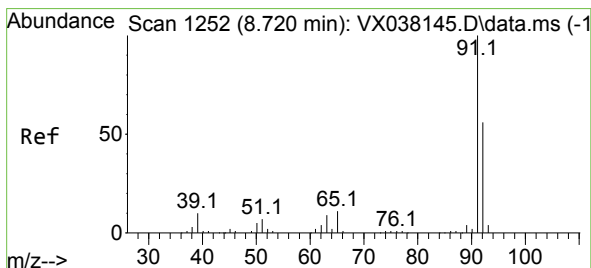
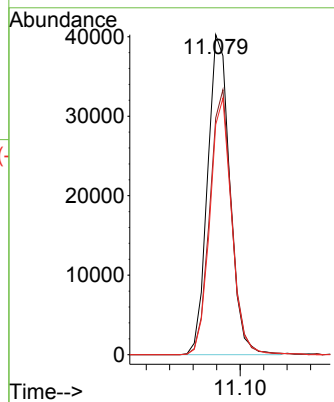
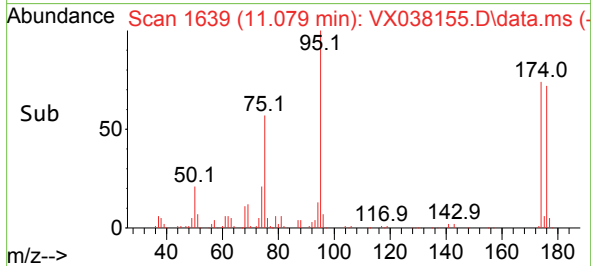


#60  
 4-Bromofluorobenzene  
 Concen: 27.296 ug/l  
 RT: 11.079 min Scan# 11  
 Delta R.T. 0.000 min  
 Lab File: VX038155.D  
 Acq: 07 Oct 2023 03:42

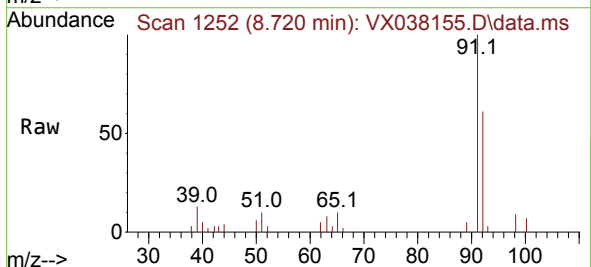
Instrument :  
 MSVOA\_X  
 ClientSampleId :  
 231005065-01



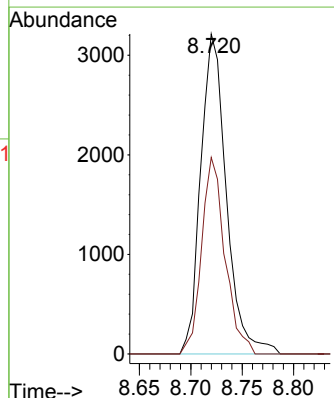
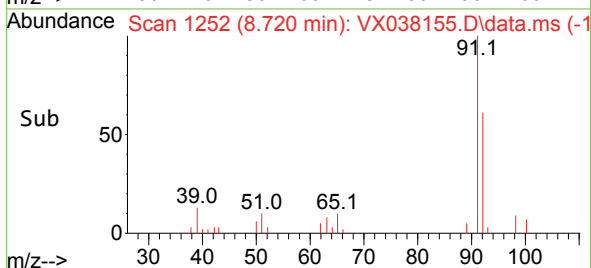
Tgt Ion: 95 Resp: 52785  
 Ion Ratio Lower Upper  
 95 100  
 174 82.2 60.5 90.7  
 176 78.8 58.2 87.4

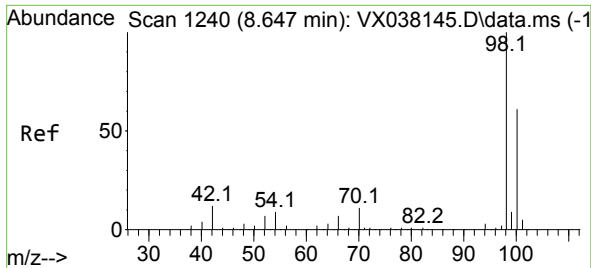


#62  
 Toluene  
 Concen: 0.905 ug/l  
 RT: 8.720 min Scan# 1252  
 Delta R.T. 0.000 min  
 Lab File: VX038155.D  
 Acq: 07 Oct 2023 03:42



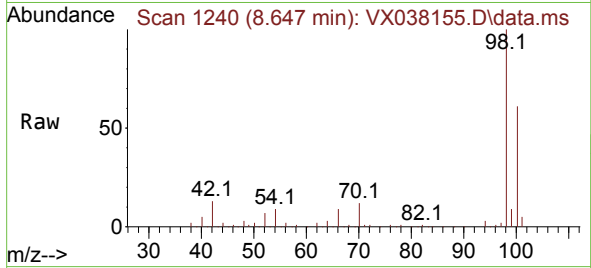
Tgt Ion: 91 Resp: 5595  
 Ion Ratio Lower Upper  
 91 100  
 92 55.9 44.9 67.3



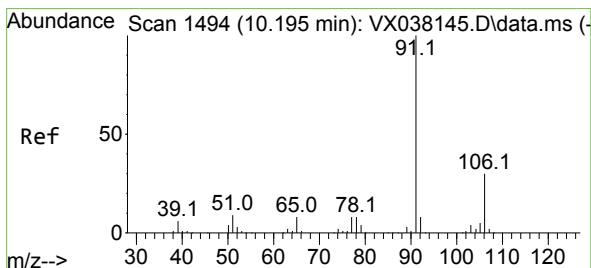
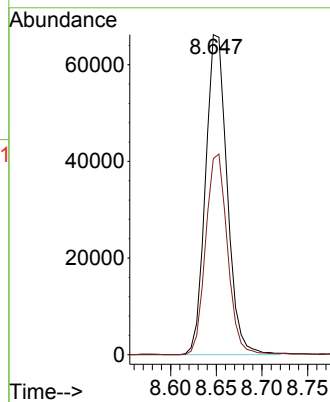
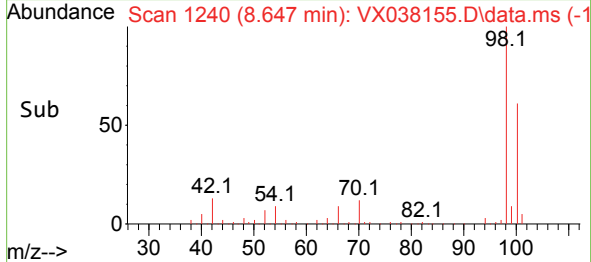


#63  
 Toluene-d8  
 Concen: 30.294 ug/l  
 RT: 8.647 min Scan# 11  
 Delta R.T. 0.000 min  
 Lab File: VX038155.D  
 Acq: 07 Oct 2023 03:42

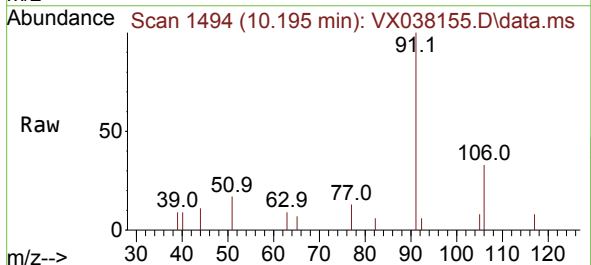
Instrument :  
 MSVOA\_X  
 ClientSampleId :  
 231005065-01



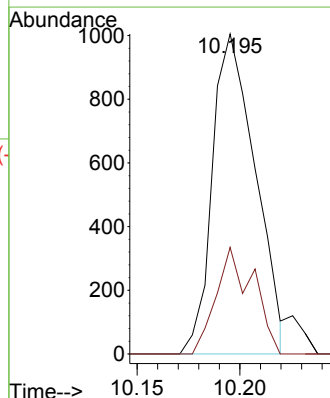
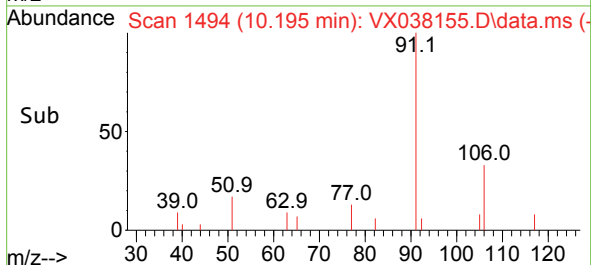
Tgt Ion: 98 Resp: 108899  
 Ion Ratio Lower Upper  
 98 100  
 100 63.3 51.6 77.4

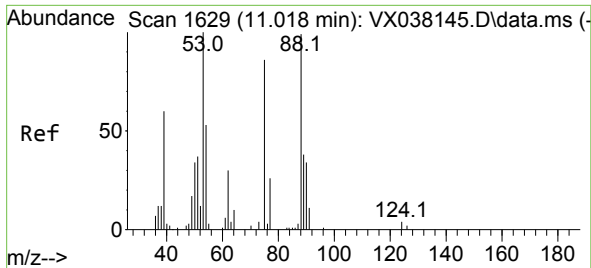


#66  
 Ethyl Benzene  
 Concen: 0.208 ug/l  
 RT: 10.195 min Scan# 1494  
 Delta R.T. 0.000 min  
 Lab File: VX038155.D  
 Acq: 07 Oct 2023 03:42



Tgt Ion: 91 Resp: 1461  
 Ion Ratio Lower Upper  
 91 100  
 106 33.3 24.2 36.4

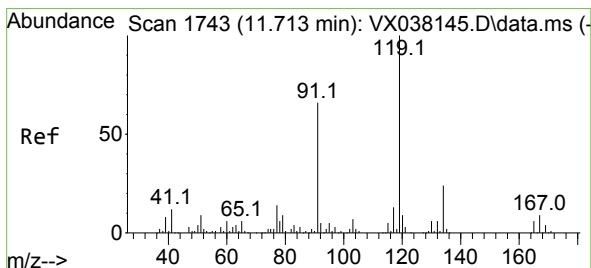
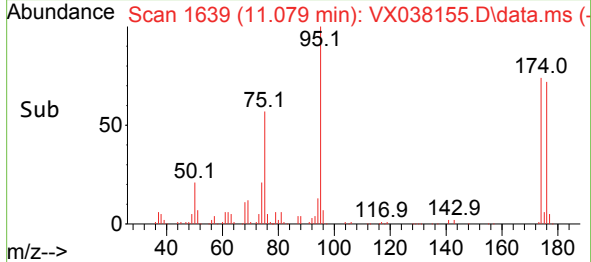
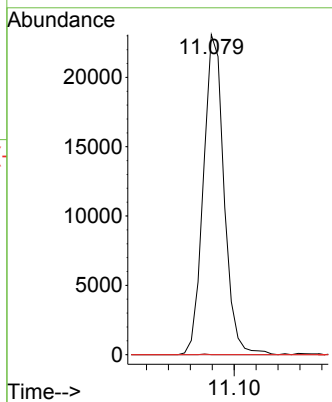
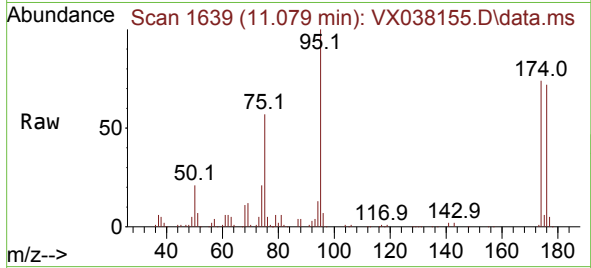




#77  
 t-1,4-Dichloro-2-butene  
 Concen: 47.452 ug/l  
 RT: 11.079 min Scan# 1792  
 Delta R.T. 0.061 min  
 Lab File: VX038155.D  
 Acq: 07 Oct 2023 03:42

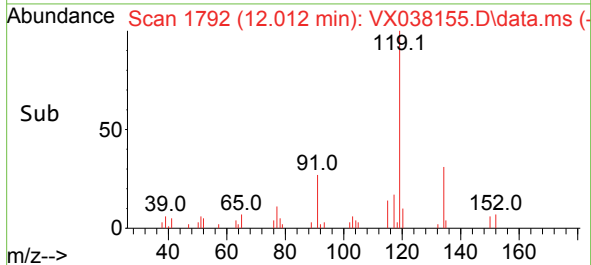
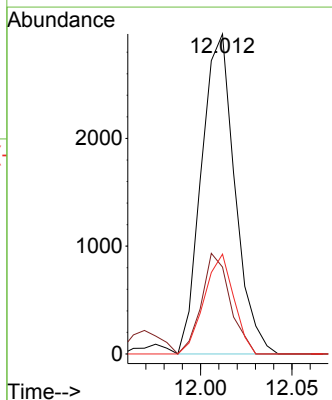
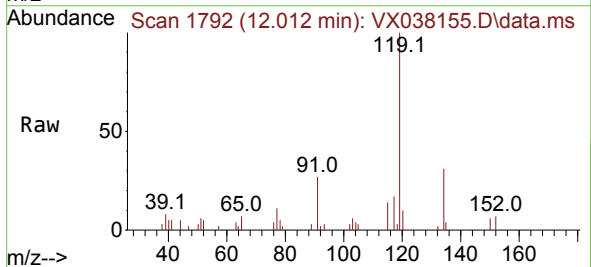
Instrument :  
 MSVOA\_X  
 ClientSampleId :  
 231005065-01

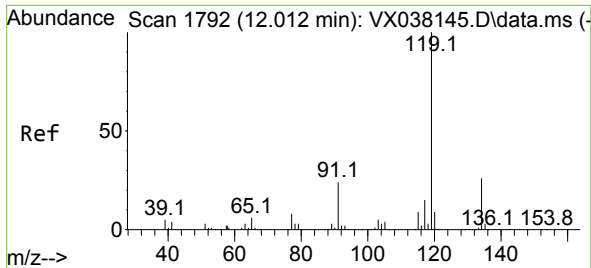
Tgt Ion: 75 Resp: 30146  
 Ion Ratio Lower Upper  
 75 100  
 53 0.0 53.9 161.7#  
 89 0.0 22.1 66.1#



#79  
 tert-butylbenzene  
 Concen: 0.655 ug/l  
 RT: 12.012 min Scan# 1792  
 Delta R.T. 0.299 min  
 Lab File: VX038155.D  
 Acq: 07 Oct 2023 03:42

Tgt Ion: 119 Resp: 3783  
 Ion Ratio Lower Upper  
 119 100  
 91 27.0 0.0 124.4  
 134 27.6 0.0 47.2





#82  
 p-Isopropyltoluene  
 Concen: 0.605 ug/l  
 RT: 12.012 min Scan# 11  
 Delta R.T. 0.000 min  
 Lab File: VX038155.D  
 Acq: 07 Oct 2023 03:42

Instrument :  
 MSVOA\_X  
 ClientSampleId :  
 231005065-01

Tgt Ion:119 Resp: 3783

Ion	Ratio	Lower	Upper
119	100		
134	27.6	0.0	53.2
91	27.0	0.0	49.4

