

Data Path : Z:\VOASRV\HPCHEM1\MSVOA X\DATA\VX100719\
 Data File : VX012843.D
 Acq On : 07 Oct 2019 17:10
 Operator : JC/SP
 Sample : K5154-16
 Misc : 5.0mL/MSVOA X/WATER
 ALS Vial : 16 Sample Multiplier: 1

Instrument :
 MSVOA_X
 ClientSampleId :
 MW-105I

Quant Time: Oct 08 12:17:06 2019
 Quant Method : Z:\VOASRV\HPCHEM1\MSVOA_X\METHOD\82X092319W.M
 Quant Title : SW846 8260
 QLast Update : Mon Sep 23 12:27:01 2019
 Response via : Initial Calibration

Internal Standards	R.T.	QIon	Response	Conc	Units	Dev(Min)
1) Pentafluorobenzene	5.65	168	190246	50.00	ug/l	0.00
34) 1,4-Difluorobenzene	6.85	114	319792	50.00	ug/l	0.00
63) Chlorobenzene-d5	10.11	117	270479	50.00	ug/l	0.00
72) 1,4-Dichlorobenzene-d4	12.07	152	106693	50.00	ug/l	0.00

System Monitoring Compounds	R.T.	QIon	Response	Conc	Units	Dev(Min)
33) 1,2-Dichloroethane-d4	6.05	65	123302	44.51	ug/l	0.00
Spiked Amount				50.000		
Recovery				=	89.02%	
35) Dibromofluoromethane	5.49	113	93973	49.34	ug/l	0.00
Spiked Amount				50.000		
Recovery				=	98.68%	
50) Toluene-d8	8.71	98	374407	51.05	ug/l	0.00
Spiked Amount				50.000		
Recovery				=	102.10%	
62) 4-Bromofluorobenzene	11.14	95	128721	44.63	ug/l	0.00
Spiked Amount				50.000		
Recovery				=	89.26%	

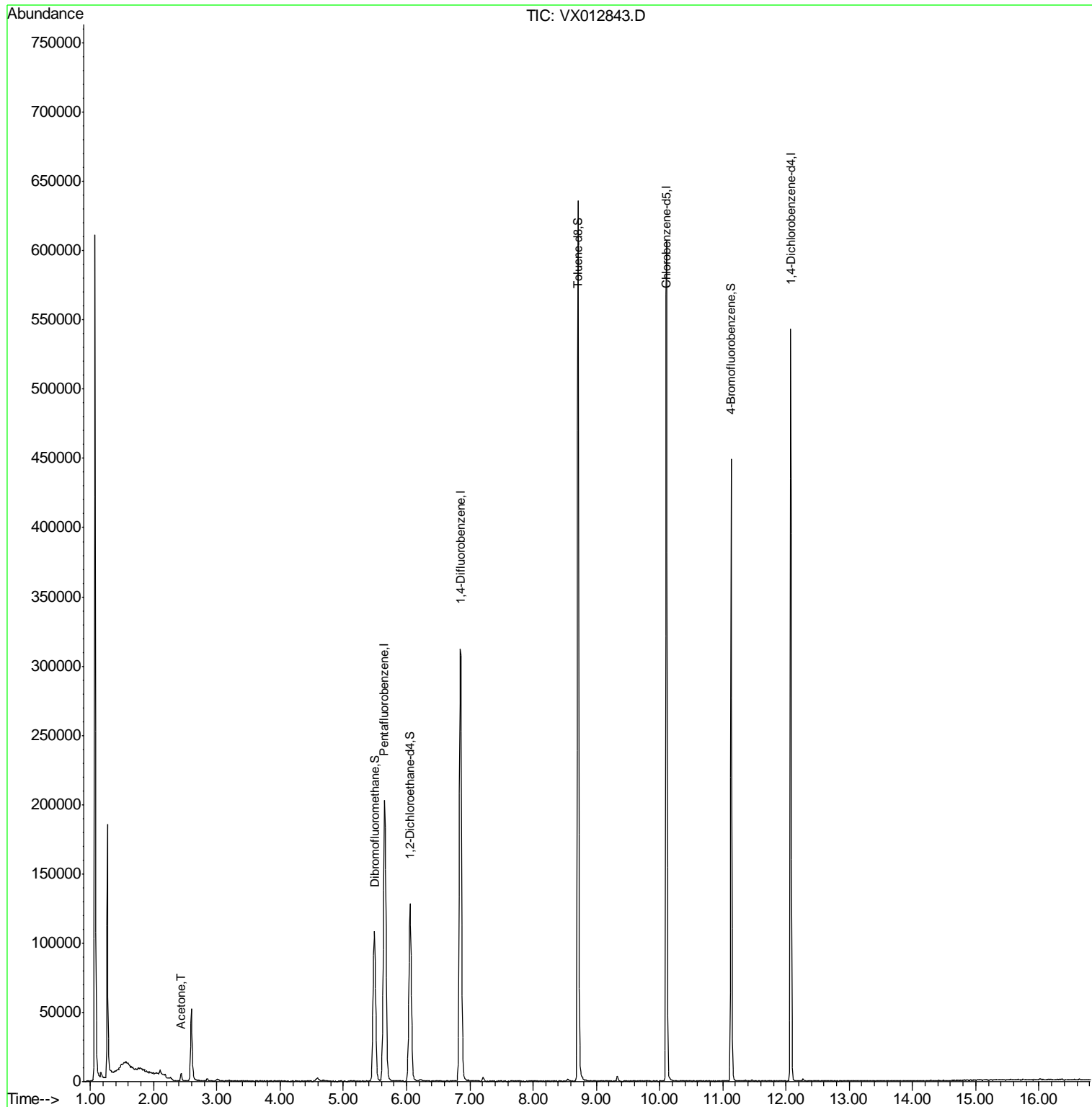
Target Compounds	R.T.	QIon	Response	Conc	Units	Qvalue
16) Acetone	2.43	43	5443	3.709	ug/l	100

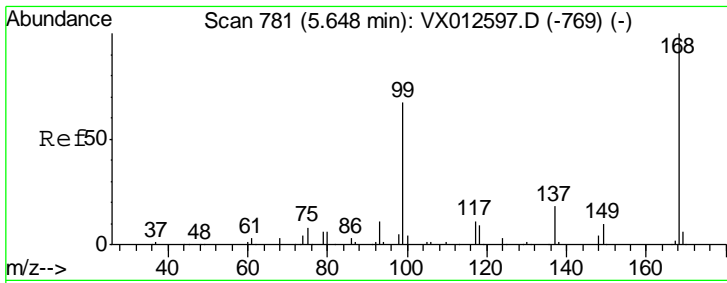
(#) = qualifier out of range (m) = manual integration (+) = signals summed

Data Path : Z:\VOASRV\HPCHEM1\MSVOA X\DATA\VX100719\
 Data File : VX012843.D
 Acq On : 07 Oct 2019 17:10
 Operator : JC/SP
 Sample : K5154-16
 Misc : 5.0mL/MSVOA X/WATER
 ALS Vial : 16 Sample Multiplier: 1

Instrument :
 MSVOA_X
 Client Sampled :
 MW-105I

Quant Time: Oct 08 12:17:06 2019
 Quant Method : Z:\VOASRV\HPCHEM1\MSVOA_X\METHOD\82X092319W.M
 Quant Title : SW846 8260
 QLast Update : Mon Sep 23 12:27:01 2019
 Response via : Initial Calibration

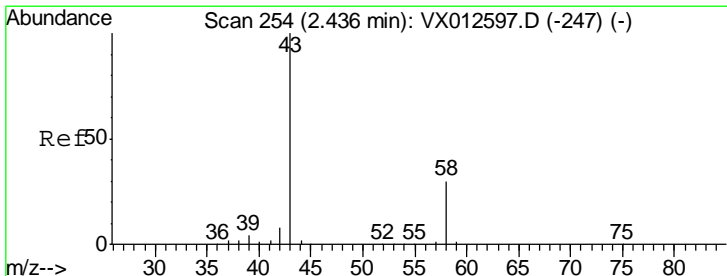
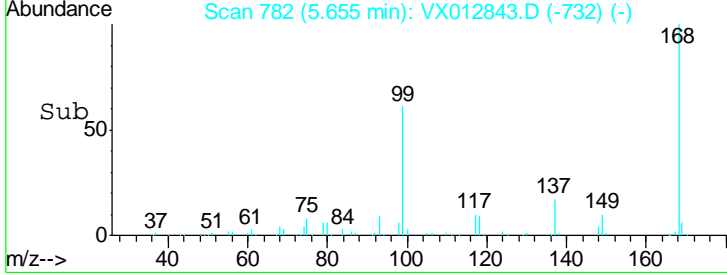
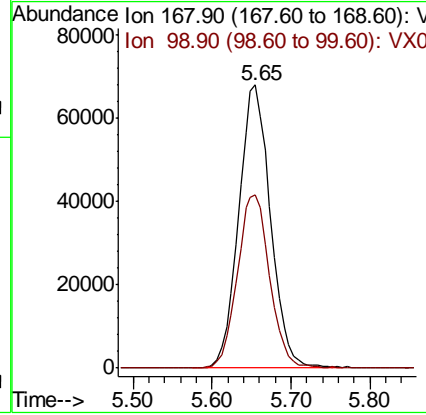
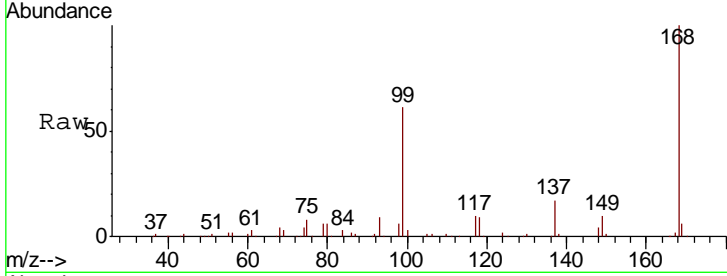




#1
 Pentafluorobenzene
 Concen: 50.000 ug/l
 RT: 5.65 min Scan# 782
 Delta R.T. 0.01 min
 Lab File: VX012843.D
 Acq: 07 Oct 2019 17:10

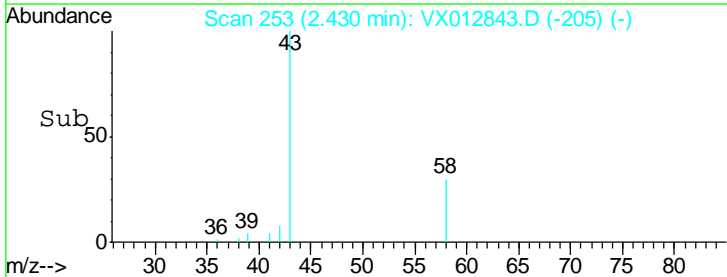
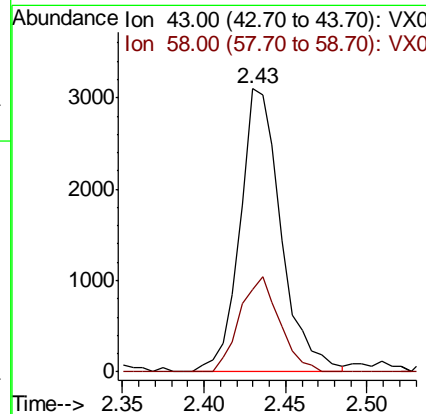
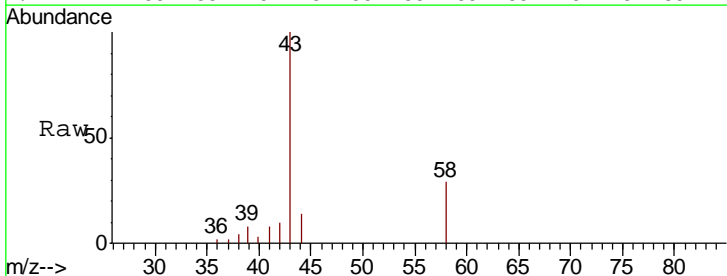
Instrument :
 MSVOA_X
 ClientSampled :
 MW-105I

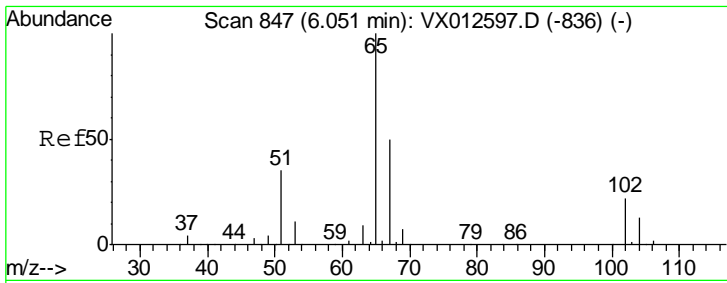
Tgt Ion: 168 Resp: 190246
 Ion Ratio Lower Upper
 168 100
 99 61.4 51.4 77.2



#16
 Acetone
 Concen: 3.709 ug/l
 RT: 2.43 min Scan# 253
 Delta R.T. -0.01 min
 Lab File: VX012843.D
 Acq: 07 Oct 2019 17:10

Tgt Ion: 43 Resp: 5443
 Ion Ratio Lower Upper
 43 100
 58 29.0 23.3 34.9

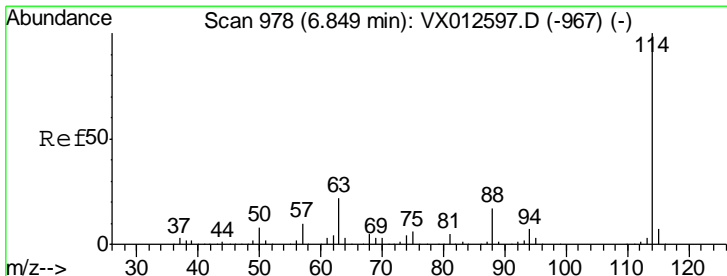
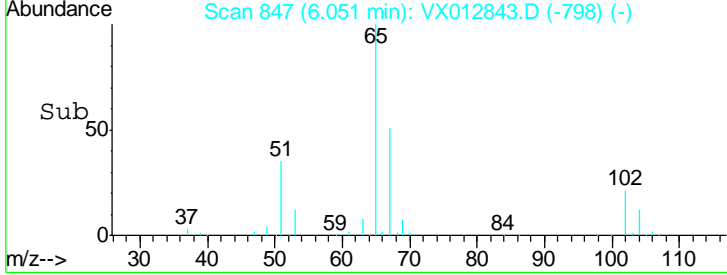
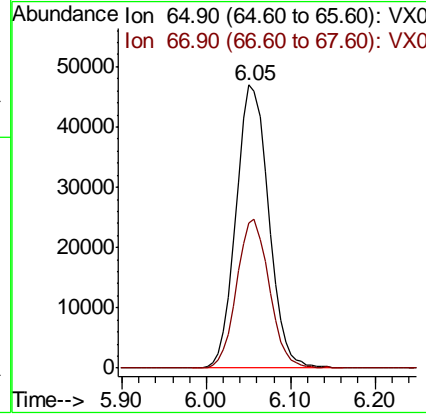
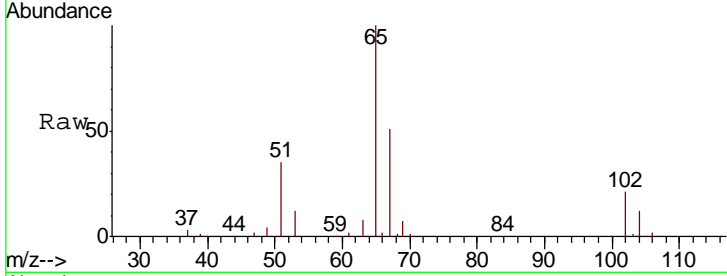




#33
 1,2-Dichloroethane-d4
 Concen: 44.508 ug/l
 RT: 6.05 min Scan# 847
 Delta R.T. 0.00 min
 Lab File: VX012843.D
 Acq: 07 Oct 2019 17:10

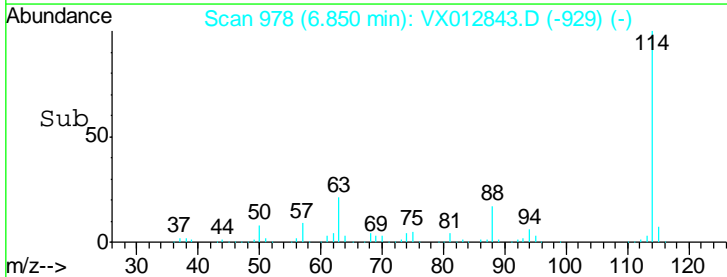
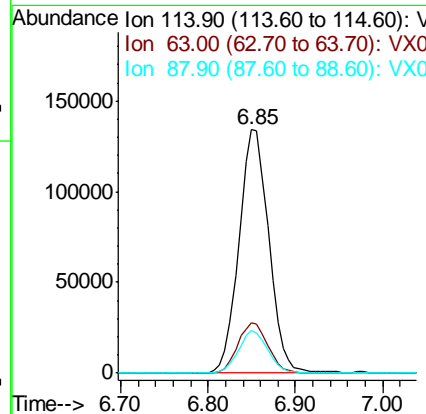
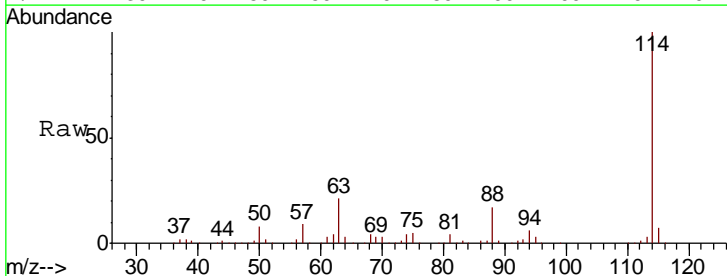
Instrument : MSVOA_X
 ClientSampled : MW-105I

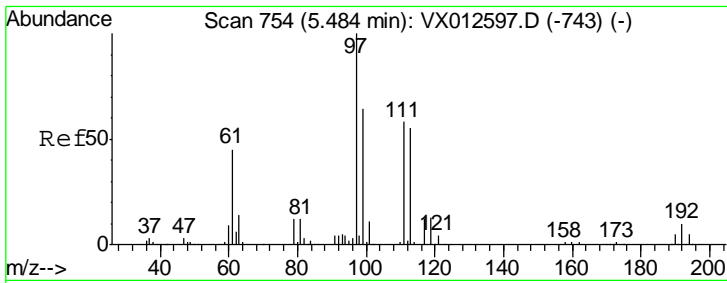
Tgt Ion	Resp	Lower	Upper
65	123302		
67	52.4	0.0	101.2



#34
 1,4-Difluorobenzene
 Concen: 50.000 ug/l
 RT: 6.85 min Scan# 978
 Delta R.T. 0.00 min
 Lab File: VX012843.D
 Acq: 07 Oct 2019 17:10

Tgt Ion	Resp	Lower	Upper
114	319792		
63	20.7	0.0	43.2
88	17.5	0.0	33.2

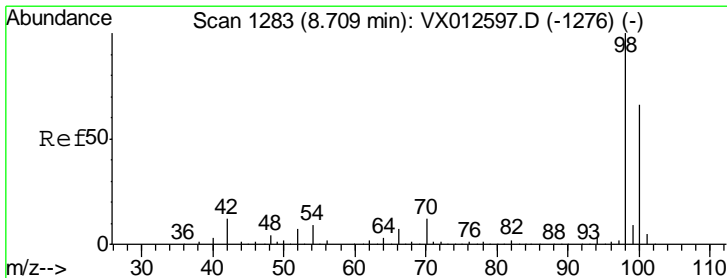
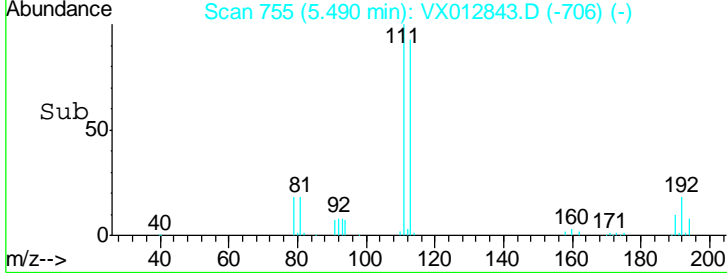
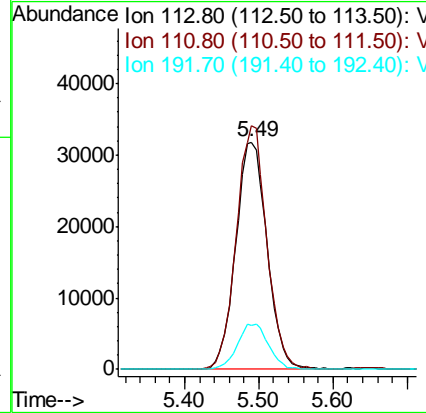
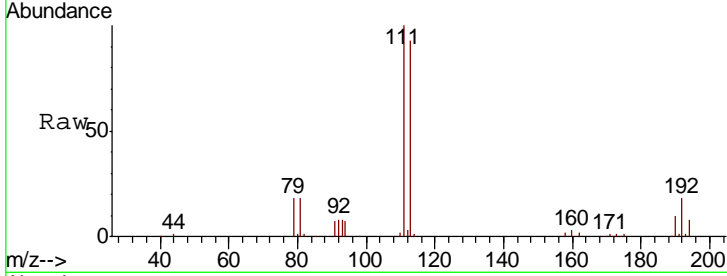




#35
 Dibromofluoromethane
 Concen: 49.343 ug/l
 RT: 5.49 min Scan# 755
 Delta R.T. 0.00 min
 Lab File: VX012843.D
 Acq: 07 Oct 2019 17:10

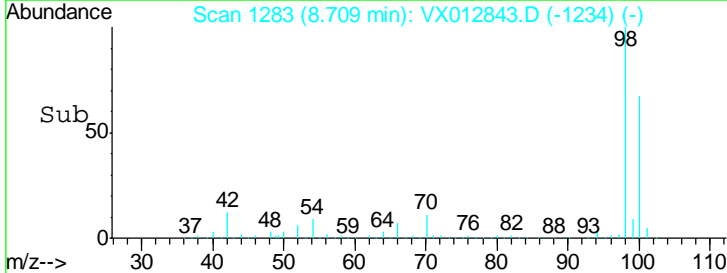
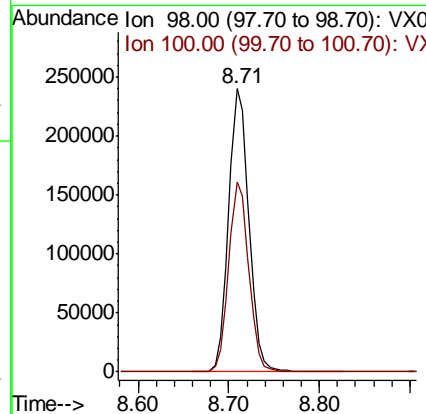
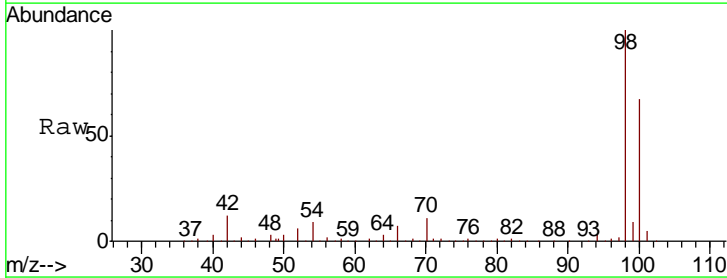
Instrument :
 MSVOA_X
 ClientSampled :
 MW-105I

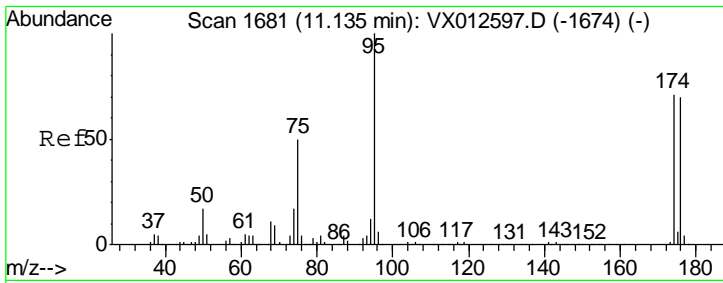
Tgt Ion	Resp	Lower	Upper
113	93973		
113	100		
111	104.1	83.4	125.2
192	19.8	14.4	21.6



#50
 Toluene-d8
 Concen: 51.048 ug/l
 RT: 8.71 min Scan# 1283
 Delta R.T. 0.00 min
 Lab File: VX012843.D
 Acq: 07 Oct 2019 17:10

Tgt Ion	Resp	Lower	Upper
98	374407		
98	100		
100	66.9	53.4	80.2

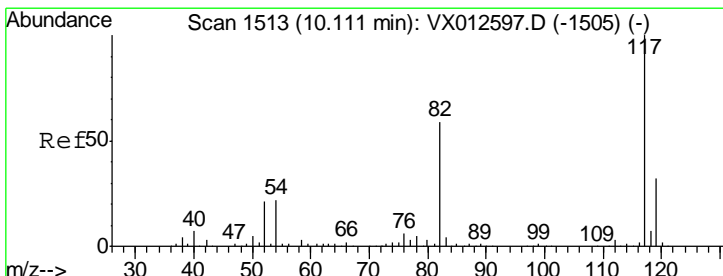
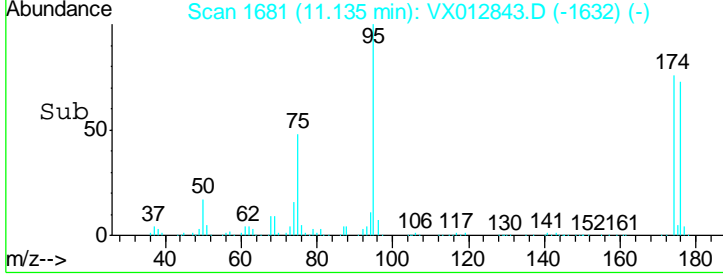
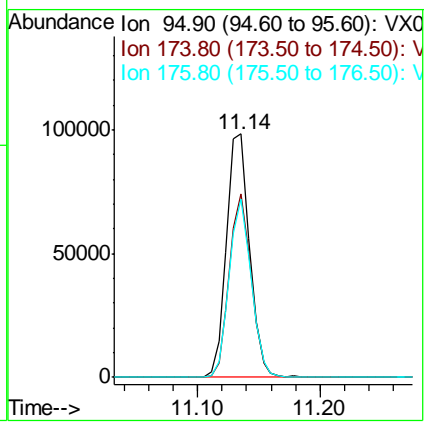
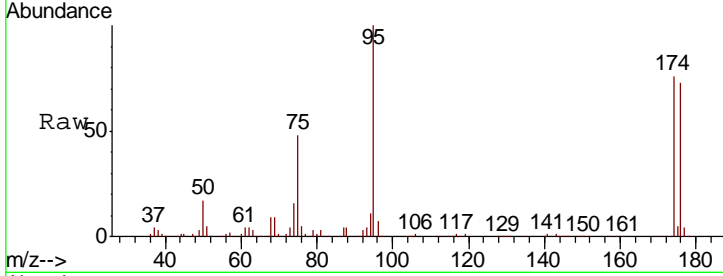




#62
 4-Bromofluorobenzene
 Concen: 44.635 ug/l
 RT: 11.14 min Scan# 1681
 Delta R.T. 0.00 min
 Lab File: VX012843.D
 Acq: 07 Oct 2019 17:10

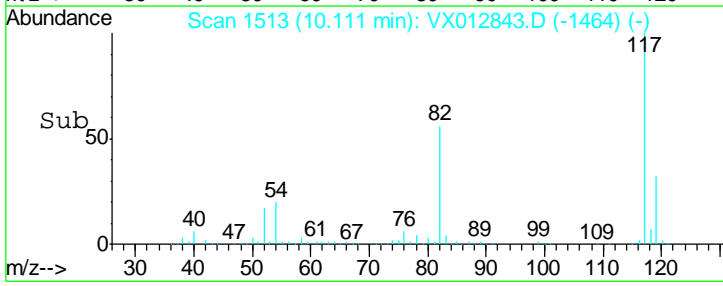
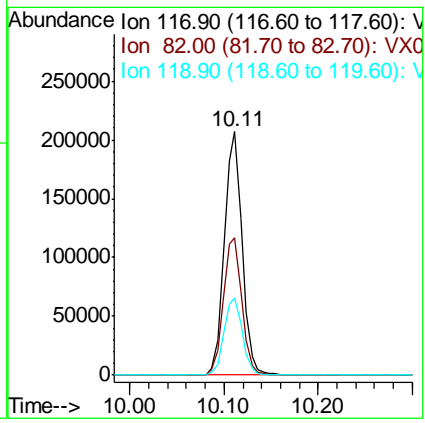
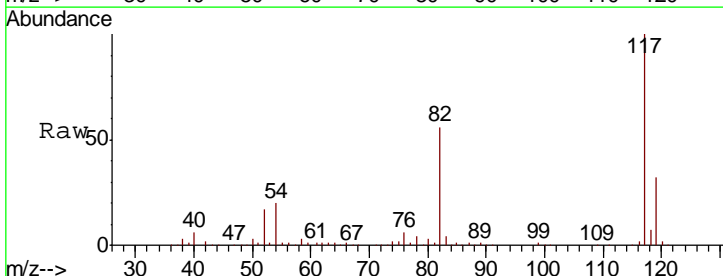
Instrument : MSVOA_X
 Client Sampled : MW-105I

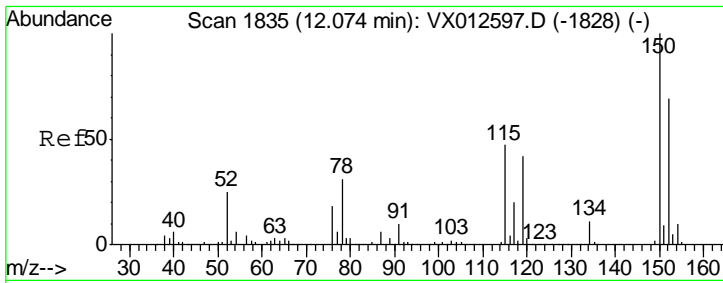
Tgt Ion	Resp	Lower	Upper
95	128721		
174	71.5	0.0	140.0
176	69.6	0.0	135.4



#63
 Chlorobenzene-d5
 Concen: 50.000 ug/l
 RT: 10.11 min Scan# 1513
 Delta R.T. 0.00 min
 Lab File: VX012843.D
 Acq: 07 Oct 2019 17:10

Tgt Ion	Resp	Lower	Upper
117	270479		
82	56.5	45.9	68.9
119	31.7	25.3	37.9





#72
 1,4-Dichlorobenzene-d4
 Concen: 50.000 ug/l
 RT: 12.07 min Scan# 1835
 Delta R.T. 0.00 min
 Lab File: VX012843.D
 Acq: 07 Oct 2019 17:10

Instrument : MSVOA_X
 ClientSampled : MW-105I

Tot Ion	Resp	Lower	Upper
152	106693		
152	100		
115	63.2	44.1	132.3
150	158.5	0.0	343.8

