

Data Path : Z:\VOASRV\HPCHEM1\MSVOA X\DATA\VX100719\
 Data File : VX012873.D
 Acq On : 08 Oct 2019 05:59
 Operator : JC/SP
 Sample : K5122-05
 Misc : 5.0mL/MSVOA X/WATER
 ALS Vial : 49 Sample Multiplier: 1

Instrument :
 MSVOA_X
 ClientSampleId :
 FA19-MMW3414

Quant Time: Oct 08 13:20:08 2019
 Quant Method : Z:\VOASRV\HPCHEM1\MSVOA_X\METHOD\82X092319W.M
 Quant Title : SW846 8260
 QLast Update : Mon Sep 23 12:27:01 2019
 Response via : Initial Calibration

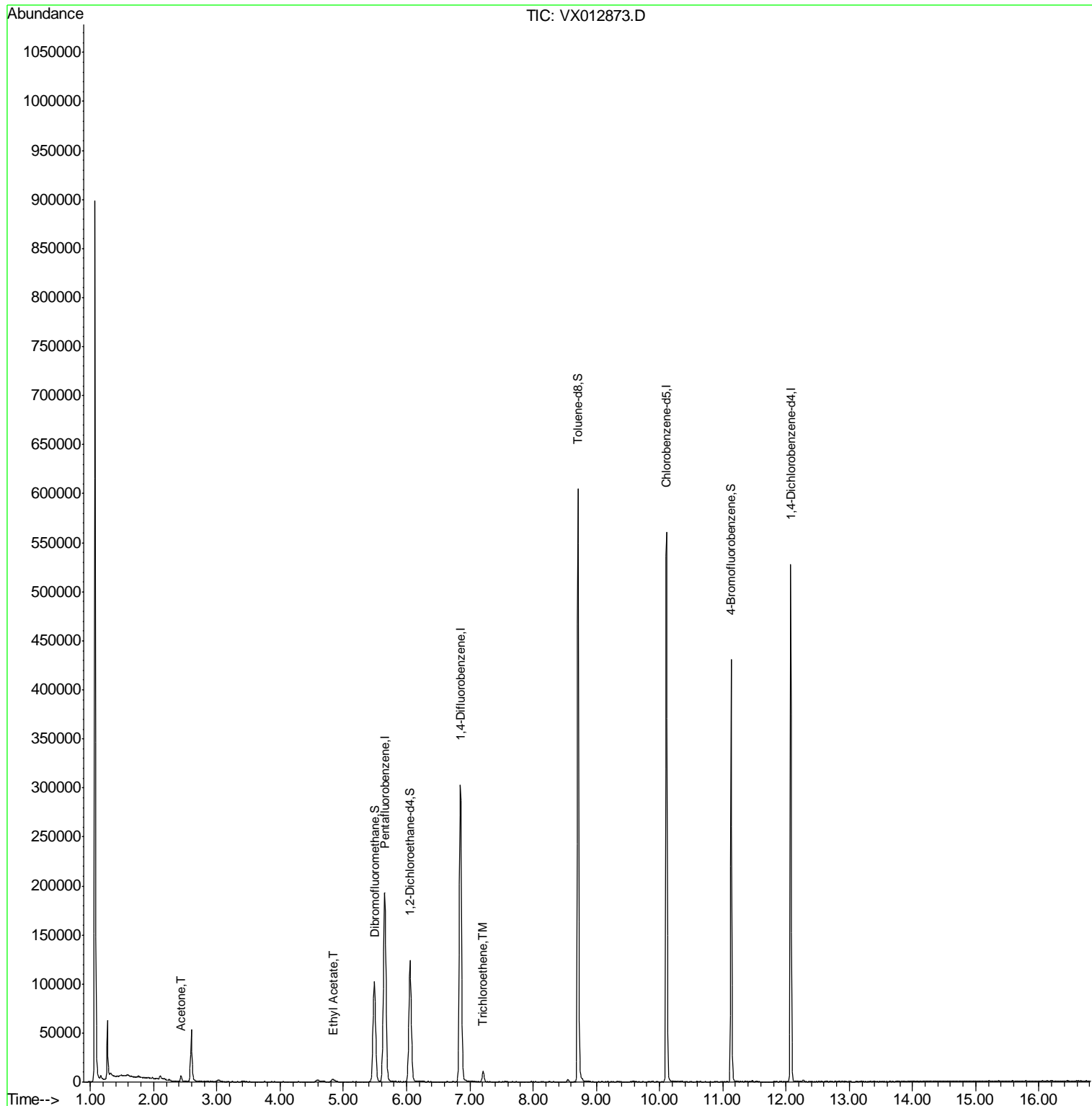
Internal Standards	R.T.	QIon	Response	Conc	Units	Dev(Min)
1) Pentafluorobenzene	5.65	168	175678	50.00	ug/l	0.00
34) 1,4-Difluorobenzene	6.85	114	301665	50.00	ug/l	0.00
63) Chlorobenzene-d5	10.11	117	261969	50.00	ug/l	0.00
72) 1,4-Dichlorobenzene-d4	12.07	152	102622	50.00	ug/l	0.00
System Monitoring Compounds						
33) 1,2-Dichloroethane-d4	6.05	65	117815	46.05	ug/l	0.00
Spiked Amount	50.000		Recovery	=	92.10%	
35) Dibromofluoromethane	5.49	113	89364	49.74	ug/l	0.00
Spiked Amount	50.000		Recovery	=	99.48%	
50) Toluene-d8	8.71	98	358188	51.77	ug/l	0.00
Spiked Amount	50.000		Recovery	=	103.54%	
62) 4-Bromofluorobenzene	11.14	95	123825	45.52	ug/l	0.00
Spiked Amount	50.000		Recovery	=	91.04%	
Target Compounds						
16) Acetone	2.44	43	6000	4.428	ug/l	89
37) Ethyl Acetate	4.83	43	5136	1.511	ug/l #	90
44) Trichloroethene	7.21	130	4219	1.929	ug/l	81

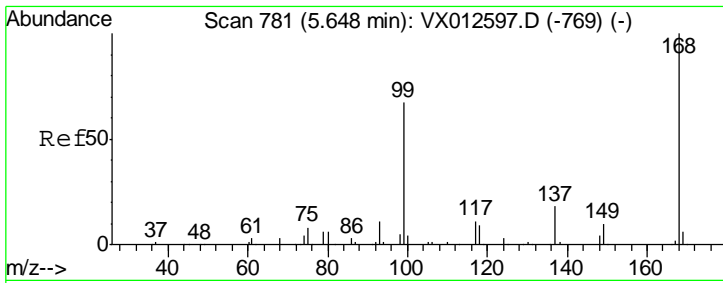
(#) = qualifier out of range (m) = manual integration (+) = signals summed

Data Path : Z:\VOASRV\HPCHEM1\MSVOA X\DATA\VX100719\
 Data File : VX012873.D
 Acq On : 08 Oct 2019 05:59
 Operator : JC/SP
 Sample : K5122-05
 Misc : 5.0mL/MSVOA X/WATER
 ALS Vial : 49 Sample Multiplier: 1

Instrument :
 MSVOA_X
 ClientSampled :
 FA19-MMW3414

Quant Time: Oct 08 13:20:08 2019
 Quant Method : Z:\VOASRV\HPCHEM1\MSVOA_X\METHOD\82X092319W.M
 Quant Title : SW846 8260
 QLast Update : Mon Sep 23 12:27:01 2019
 Response via : Initial Calibration

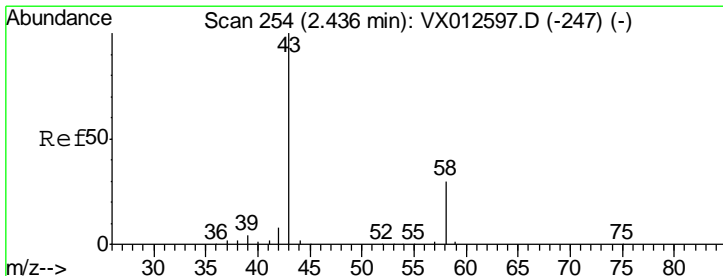
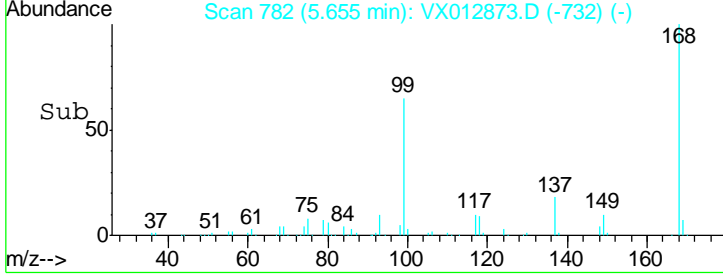
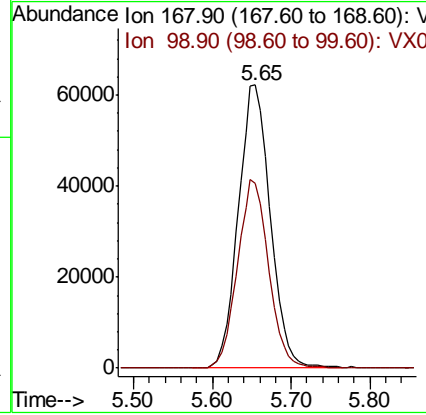
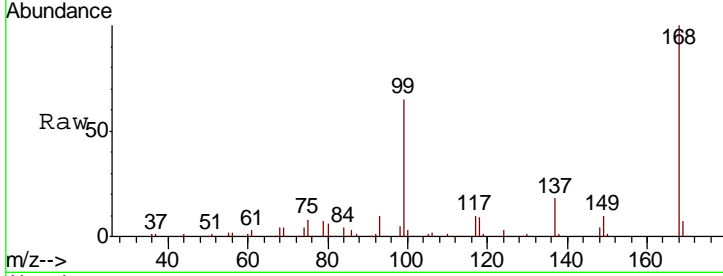




#1
 Pentafluorobenzene
 Concen: 50.000 ug/l
 RT: 5.65 min Scan# 782
 Delta R.T. 0.01 min
 Lab File: VX012873.D
 Acq: 08 Oct 2019 05:59

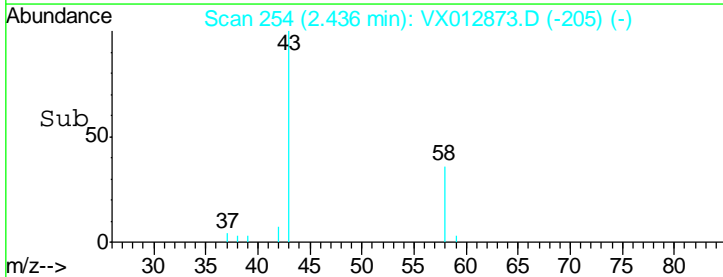
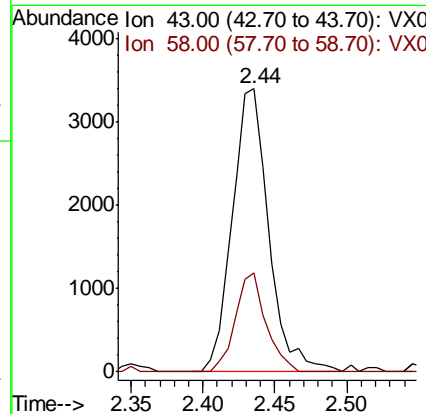
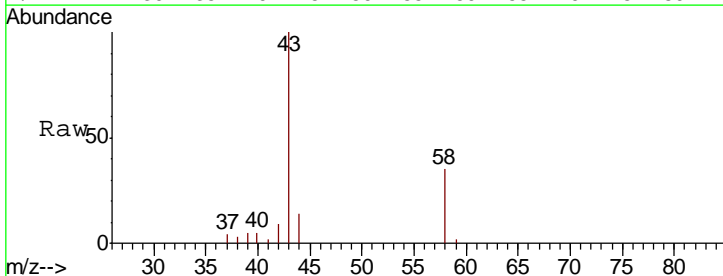
Instrument :
 MSVOA_X
 ClientSampled :
 FA19-MMW3414

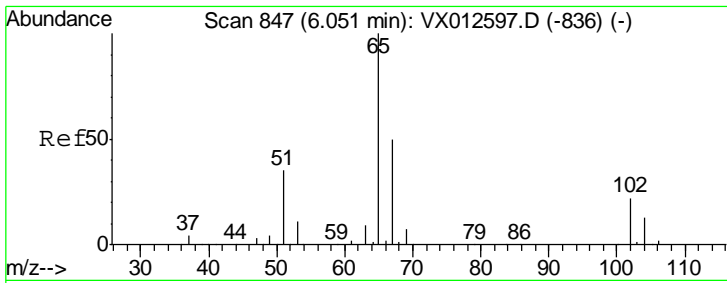
Tgt Ion: 168 Resp: 175678
 Ion Ratio Lower Upper
 168 100
 99 65.3 51.4 77.2



#16
 Acetone
 Concen: 4.428 ug/l
 RT: 2.44 min Scan# 254
 Delta R.T. 0.00 min
 Lab File: VX012873.D
 Acq: 08 Oct 2019 05:59

Tgt Ion: 43 Resp: 6000
 Ion Ratio Lower Upper
 43 100
 58 34.9 23.3 34.9

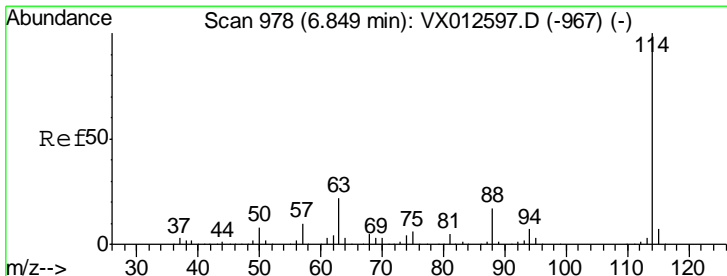
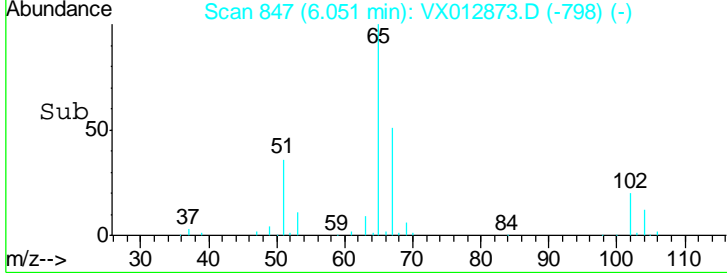
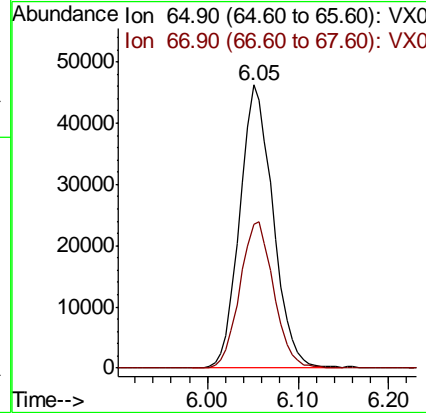
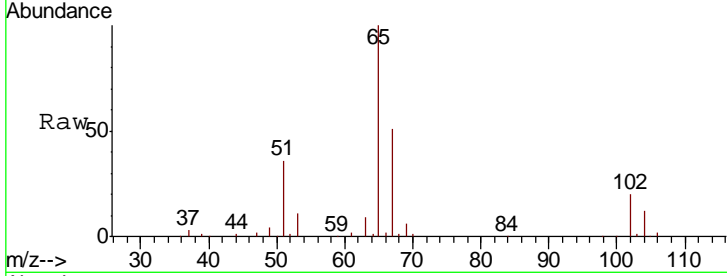




#33
 1,2-Dichloroethane-d4
 Concen: 46.054 ug/l
 RT: 6.05 min Scan# 847
 Delta R.T. 0.00 min
 Lab File: VX012873.D
 Acq: 08 Oct 2019 05:59

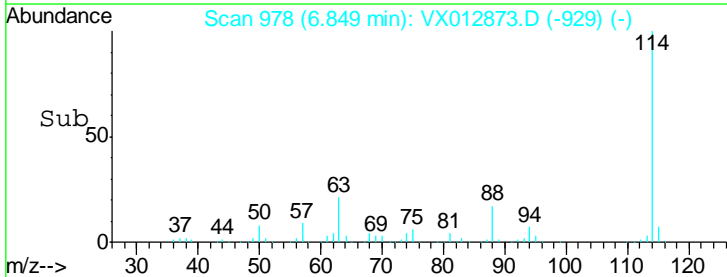
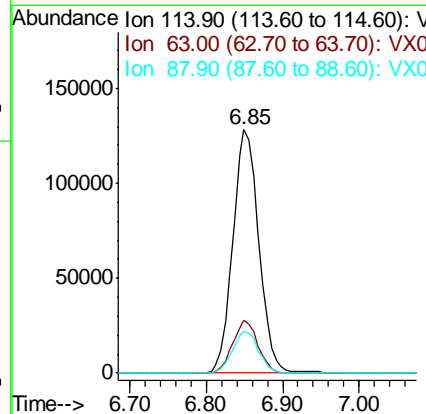
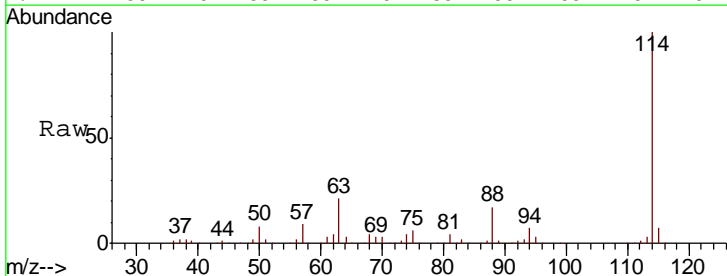
Instrument : MSVOA_X
 ClientSampled : FA19-MMW3414

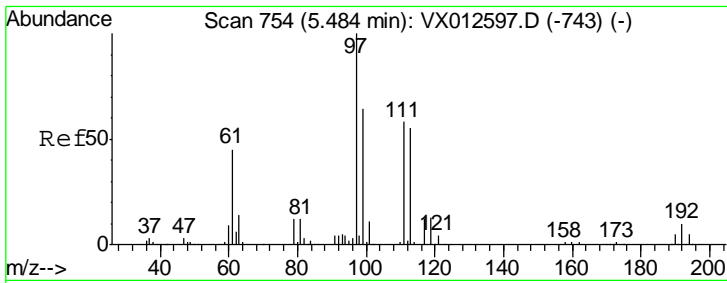
Tgt Ion	Resp	Lower	Upper
65	117815		
67	52.5	0.0	101.2



#34
 1,4-Difluorobenzene
 Concen: 50.000 ug/l
 RT: 6.85 min Scan# 978
 Delta R.T. 0.00 min
 Lab File: VX012873.D
 Acq: 08 Oct 2019 05:59

Tgt Ion	Resp	Lower	Upper
114	301665		
63	21.5	0.0	43.2
88	17.2	0.0	33.2

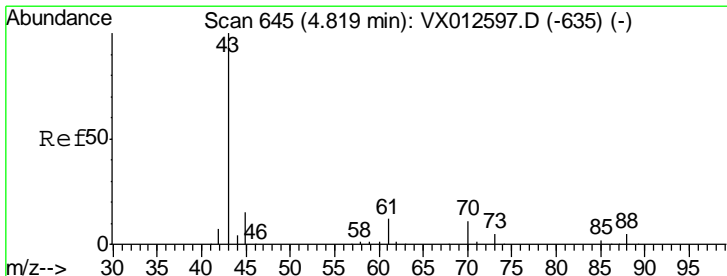
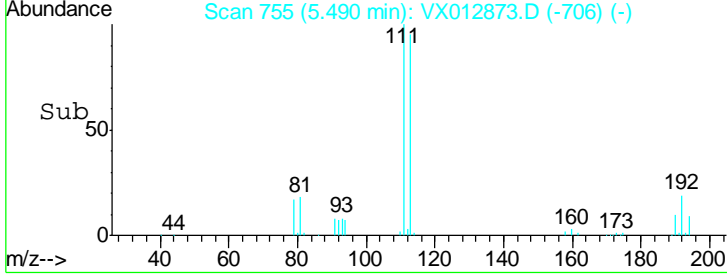
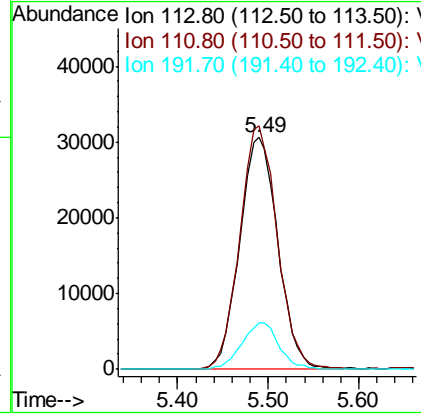
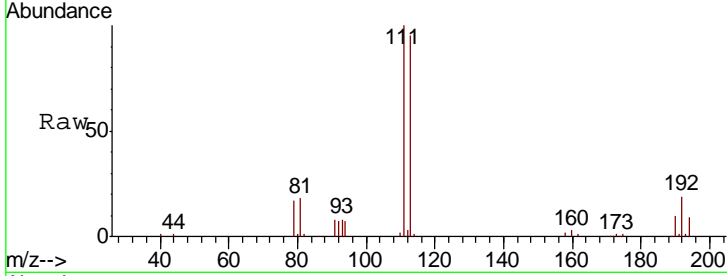




#35
 Dibromofluoromethane
 Concen: 49.742 ug/l
 RT: 5.49 min Scan# 755
 Delta R.T. 0.00 min
 Lab File: VX012873.D
 Acq: 08 Oct 2019 05:59

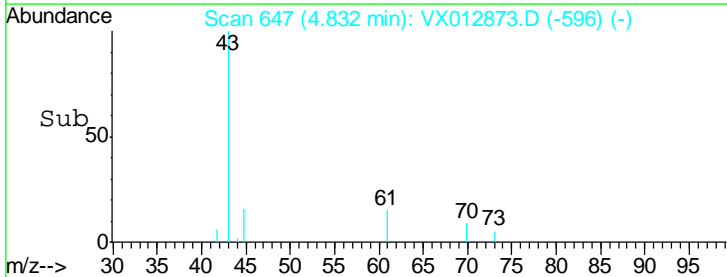
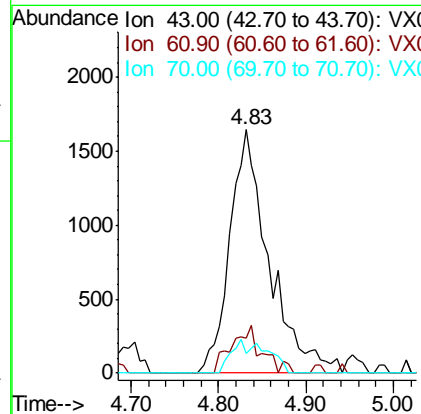
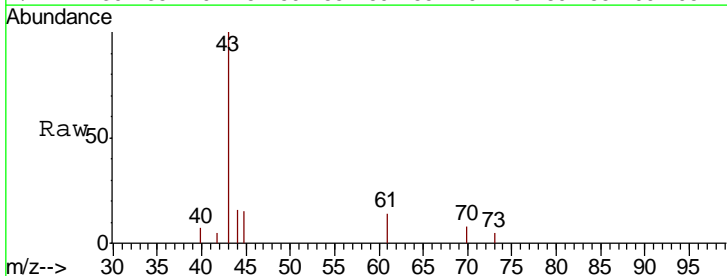
Instrument :
 MSVOA_X
ClientSampled :
 FA19-MMW3414

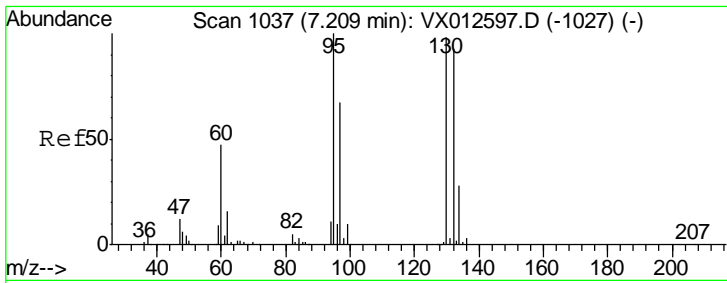
Tgt Ion	Resp	Lower	Upper
113	89364		
111	103.3	83.4	125.2
192	19.5	14.4	21.6



#37
 Ethyl Acetate
 Concen: 1.511 ug/l
 RT: 4.83 min Scan# 647
 Delta R.T. 0.01 min
 Lab File: VX012873.D
 Acq: 08 Oct 2019 05:59

Tgt Ion	Resp	Lower	Upper
43	5136		
61	15.1	10.2	15.4
70	5.3	8.7	13.1#

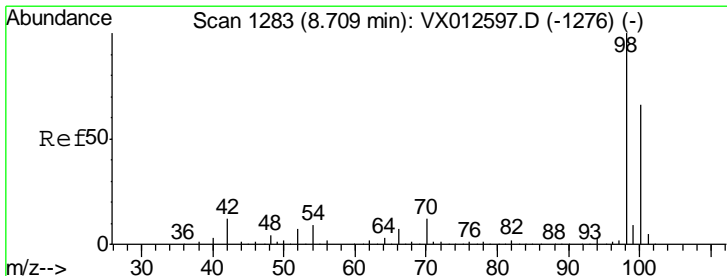
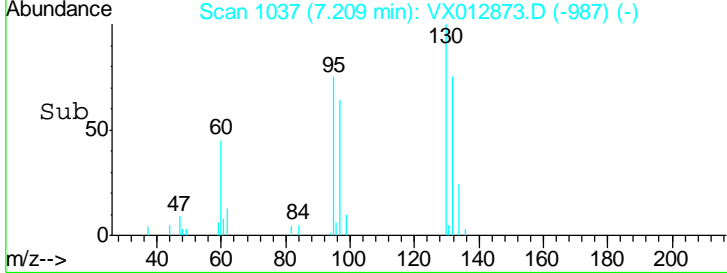
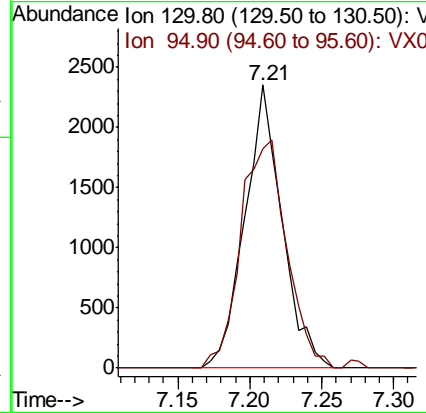
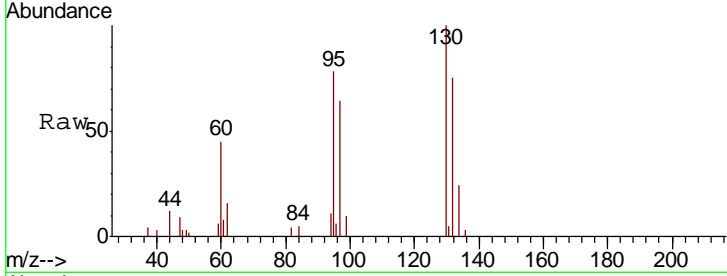




#44
 Trichloroethene
 Concen: 1.929 ug/l
 RT: 7.21 min Scan# 1037
 Delta R.T. 0.01 min
 Lab File: VX012873.D
 Acq: 08 Oct 2019 05:59

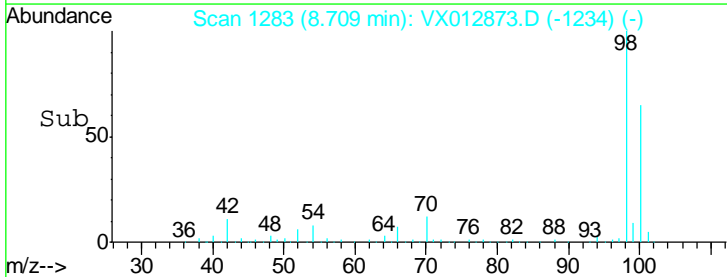
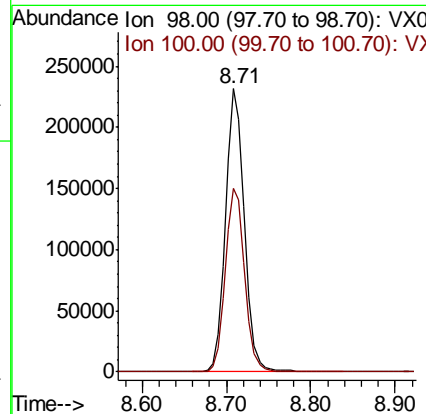
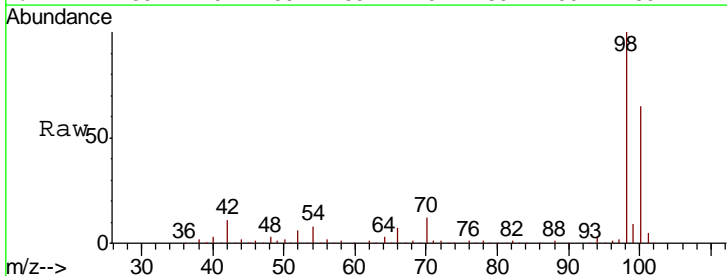
Instrument : MSVOA_X
 ClientSampled : FA19-MMW3414

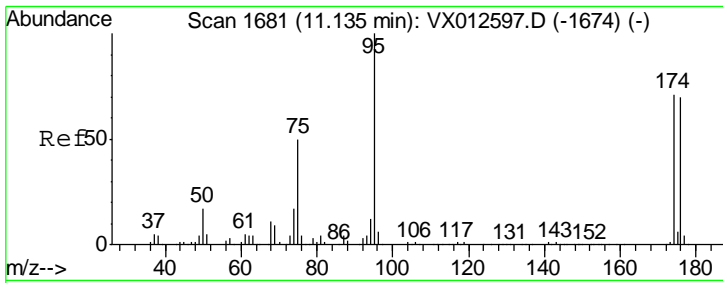
Tgt Ion	Resp	Ion Ratio	Lower	Upper
130	4219	100		
95		77.6	0.0	193.0



#50
 Toluene-d8
 Concen: 51.772 ug/l
 RT: 8.71 min Scan# 1283
 Delta R.T. 0.00 min
 Lab File: VX012873.D
 Acq: 08 Oct 2019 05:59

Tgt Ion	Resp	Ion Ratio	Lower	Upper
98	358188	100		
100		66.6	53.4	80.2

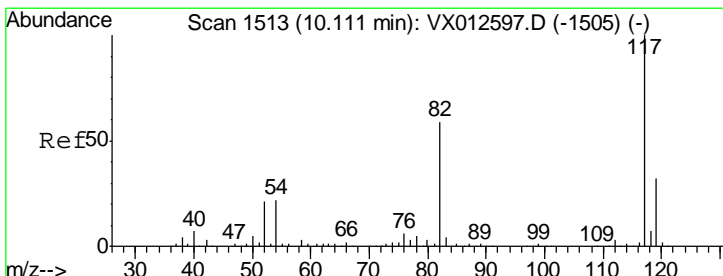
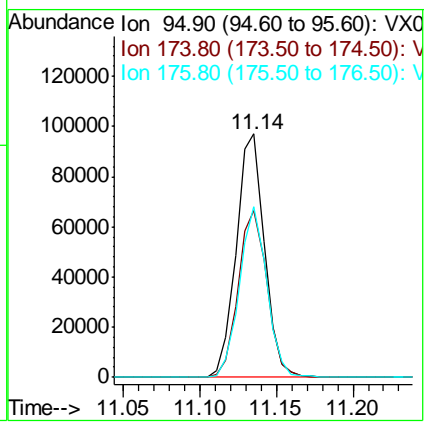
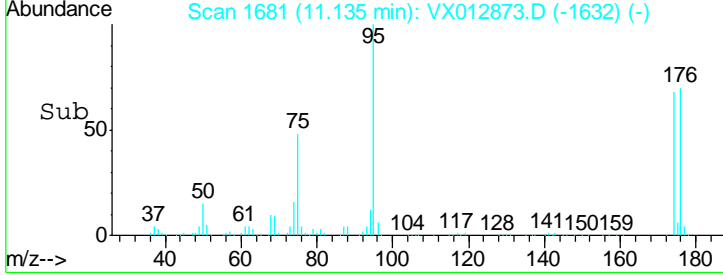
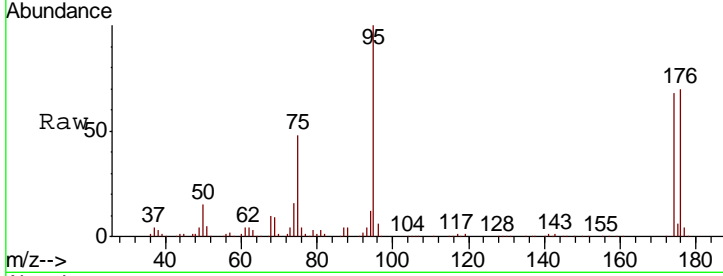




#62
 4-Bromofluorobenzene
 Concen: 45.517 ug/l
 RT: 11.14 min Scan# 1681
 Delta R.T. 0.00 min
 Lab File: VX012873.D
 Acq: 08 Oct 2019 05:59

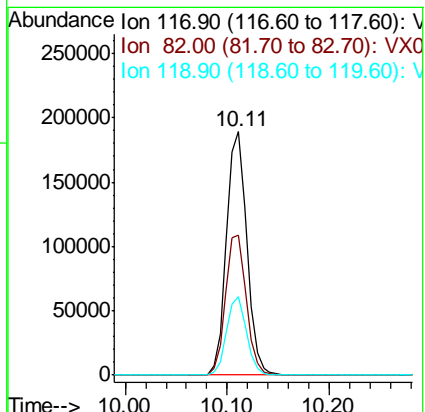
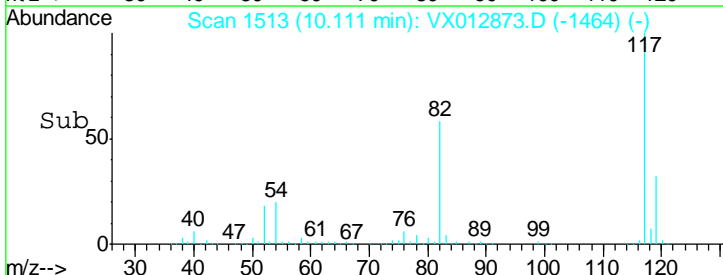
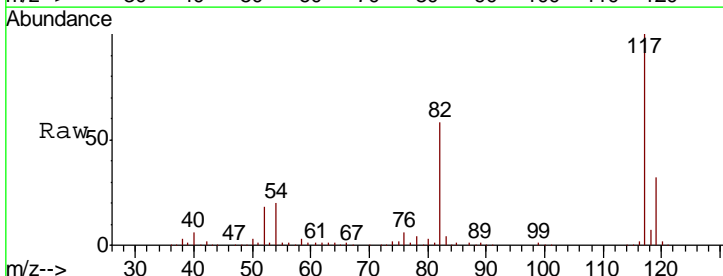
Instrument : MSVOA_X
 ClientSampled : FA19-MMW3414

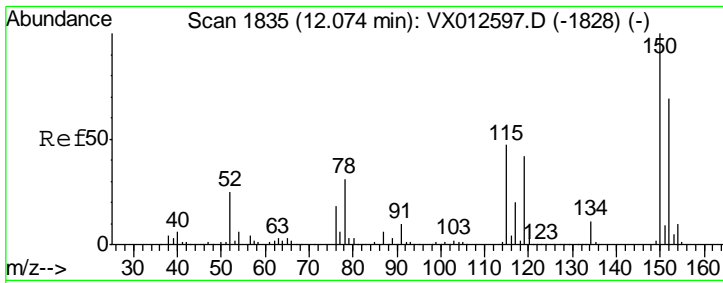
Tgt Ion	Resp	Lower	Upper
95	123825		
174	69.9	0.0	140.0
176	68.2	0.0	135.4



#63
 Chlorobenzene-d5
 Concen: 50.000 ug/l
 RT: 10.11 min Scan# 1513
 Delta R.T. 0.00 min
 Lab File: VX012873.D
 Acq: 08 Oct 2019 05:59

Tgt Ion	Resp	Lower	Upper
117	261969		
82	57.5	45.9	68.9
119	32.0	25.3	37.9





#72
 1,4-Dichlorobenzene-d4
 Concen: 50.000 ug/l
 RT: 12.07 min Scan# 1835
 Delta R.T. 0.00 min
 Lab File: VX012873.D
 Acq: 08 Oct 2019 05:59

Instrument : MSVOA_X
 ClientSampled : FA19-MMW3414

Tot Ion	Resp	Lower	Upper
152	102622		
152	100		
115	64.8	44.1	132.3
150	158.8	0.0	343.8

