

Data Path : Z:\VOASRV\HPCHEM1\MSVOA X\DATA\VX100719\
 Data File : VX012830.D
 Acq On : 07 Oct 2019 11:57
 Operator : JC/SP
 Sample : VX1007WBL01
 Misc : 5.0mL/MSVOA X/WATER
 ALS Vial : 3 Sample Multiplier: 1

Instrument :
 MSVOA_X
 ClientSampleId :
 VX1007WBL01

Integration Parameters: RTEINT.P
 Integrator: RTE
 Smoothing : ON Filtering: 5
 Sampling : 1 Min Area: 3 % of largest Peak
 Start Thrs: 0.2 Max Peaks: 100
 Stop Thrs : 0 Peak Location: TOP

If leading or trailing edge < 100 prefer < Baseline drop else tangent >
 Peak separation: 5

Method : Z:\VOASRV\HPCHEM1\MSVOA_X\METHOD\82X092319W.M
 Title : SW846 8260

Signal : TIC

peak #	R.T. min	first scan	max scan	last scan	PK TY	peak height	corr. area	corr. % max.	% of total
1	1.070	26	30	43	rBV	403387	504041	53.96%	9.514%
2	1.265	59	62	69	rVB2	8504	11479	1.23%	0.217%
3	5.484	742	754	768	rBV2	104813	295986	31.69%	5.587%
4	5.649	768	781	797	rVV	190317	536259	57.41%	10.122%
5	6.051	837	847	860	rBV2	121456	315294	33.75%	5.951%
6	6.850	967	978	990	rBV	290715	697983	74.72%	13.174%
7	8.709	1276	1283	1298	rBV	607722	934123	100.00%	17.632%
8	10.105	1506	1512	1524	rBV	563168	777791	83.26%	14.681%
9	11.135	1675	1681	1692	rBV	427814	565214	60.51%	10.668%
10	12.074	1829	1835	1846	rBV	523520	659834	70.64%	12.454%

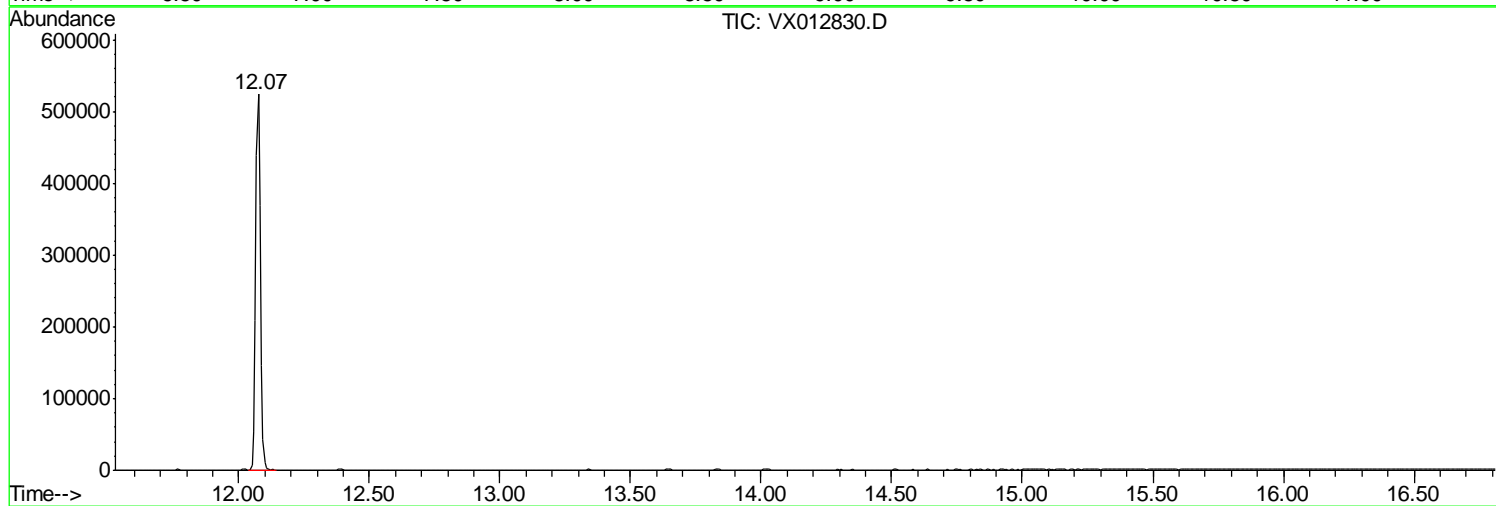
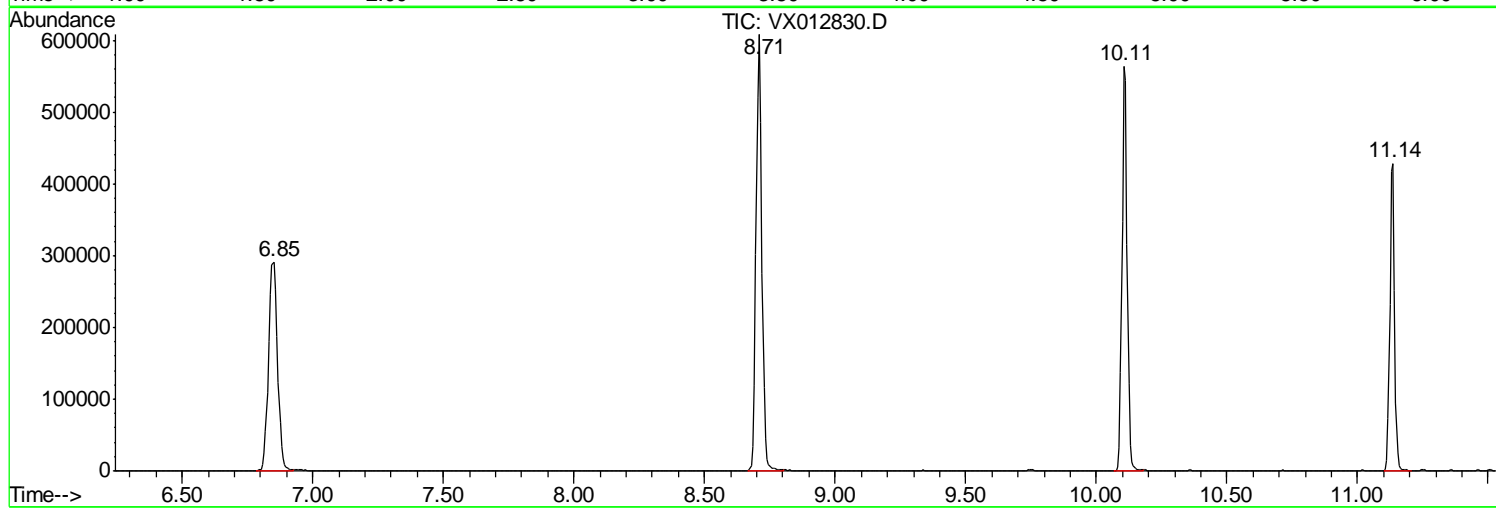
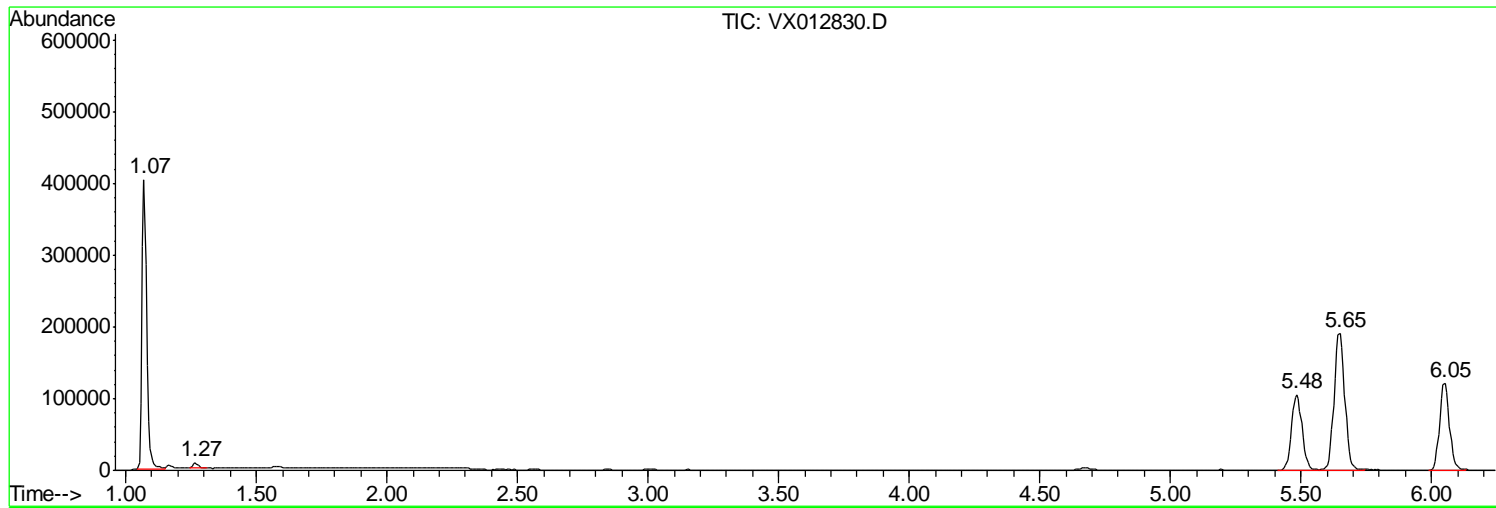
Sum of corrected areas: 5298004

Data Path : Z:\VOASRV\HPCHEM1\MSVOA X\DATA\VX100719\
Data File : VX012830.D
Acq On : 07 Oct 2019 11:57
Operator : JC/SP
Sample : VX1007WBL01
Misc : 5.0mL/MSVOA X/WATER
ALS Vial : 3 Sample Multiplier: 1

Instrument :
MSVOA_X
ClientSampled :
VX1007WBL01

Quant Method : Z:\VOASRV\HPCHEM1\MSVOA_X\METHOD\82X092319W.M
Quant Title : SW846 8260

TIC Library : C:\DATABASE\NIST11.L
TIC Integration Parameters: LSCINT.P



Data Path : Z:\VOASRV\HPCHEM1\MSVOA_X\DATA\VX100719\
Data File : VX012830.D
Acq On : 07 Oct 2019 11:57
Operator : JC/SP
Sample : VX1007WBL01
Misc : 5.0mL/MSVOA_X/WATER
ALS Vial : 3 Sample Multiplier: 1

Instrument :
MSVOA_X
ClientSampleId :
VX1007WBL01

Quant Method : Z:\VOASRV\HPCHEM1\MSVOA_X\METHOD\82X092319W.M
Quant Title : SW846 8260

TIC Library : C:\DATABASE\NIST11.L
TIC Integration Parameters: LSCINT.P

No Library Search Compounds Detected

Data Path : Z:\VOASRV\HPCHEM1\MSVOA_X\DATA\VX100719\
Data File : VX012830.D
Acq On : 07 Oct 2019 11:57
Operator : JC/SP
Sample : VX1007WBL01
Misc : 5.0mL/MSVOA_X/WATER
ALS Vial : 3 Sample Multiplier: 1

Instrument :
MSVOA_X
ClientSampleId :
VX1007WBL01

Quant Method : Z:\VOASRV\HPCHEM1\MSVOA_X\METHOD\82X092319W.M
Quant Title : SW846 8260

TIC Library : C:\DATABASE\NIST11.L
TIC Integration Parameters: LSCINT.P

TIC Top Hit name	RT	EstConc	Units	Response	--Internal Standard--			
					#	RT	Resp	Conc
