

Data Path : Z:\VOASRV\HPCHEM1\MSVOA X\DATA\VX100719\  
 Data File : VX012845.D  
 Acq On : 07 Oct 2019 17:57  
 Operator : JC/SP  
 Sample : K5154-18  
 Misc : 5.0mL/MSVOA X/WATER  
 ALS Vial : 18 Sample Multiplier: 1

Instrument :  
 MSVOA\_X  
 ClientSampleId :  
 MW-104I

Integration Parameters: RTEINT.P

Integrator: RTE  
 Smoothing : ON Filtering: 5  
 Sampling : 1 Min Area: 3 % of largest Peak  
 Start Thrs: 0.2 Max Peaks: 100  
 Stop Thrs : 0 Peak Location: TOP

If leading or trailing edge < 100 prefer < Baseline drop else tangent >  
 Peak separation: 5

Method : Z:\VOASRV\HPCHEM1\MSVOA\_X\METHOD\82X092319W.M  
 Title : SW846 8260

Signal : TIC

peak #	R.T. min	first scan	max scan	last scan	PK TY	peak height	corr. area	corr. % max.	% of total
1	1.070	26	30	43	rBV	654701	819503	84.33%	13.843%
2	1.265	58	62	76	rBV	106984	127125	13.08%	2.147%
3	2.435	248	254	264	rVB	5540	11054	1.14%	0.187%
4	2.594	273	280	292	rBV	35382	66137	6.81%	1.117%
5	5.490	742	755	769	rBV	108985	305029	31.39%	5.153%
6	5.654	771	782	798	rVV	194890	550782	56.68%	9.304%
7	6.057	837	848	865	rBV	123318	325689	33.52%	5.502%
8	6.849	967	978	993	rBV	308338	726208	74.73%	12.267%
9	8.709	1276	1283	1302	rBV	615554	971729	100.00%	16.415%
10	10.111	1506	1513	1528	rBV	586843	805928	82.94%	13.614%
11	11.135	1675	1681	1693	rBV	442150	567667	58.42%	9.589%
12	12.074	1829	1835	1848	rVB	516500	643091	66.18%	10.863%

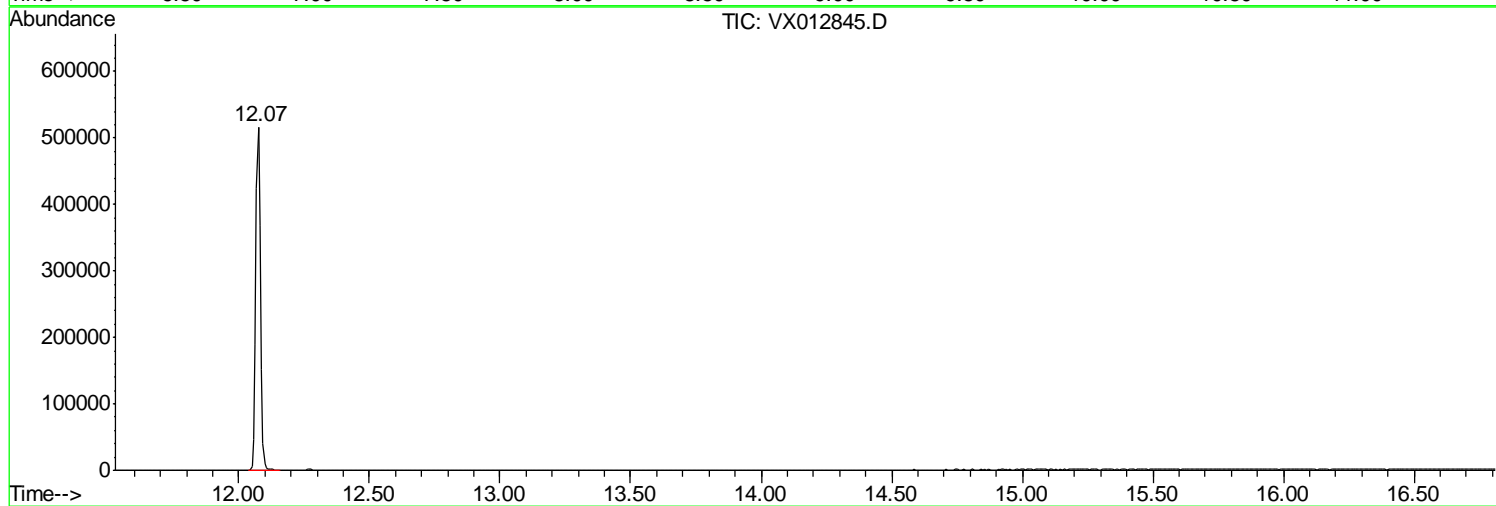
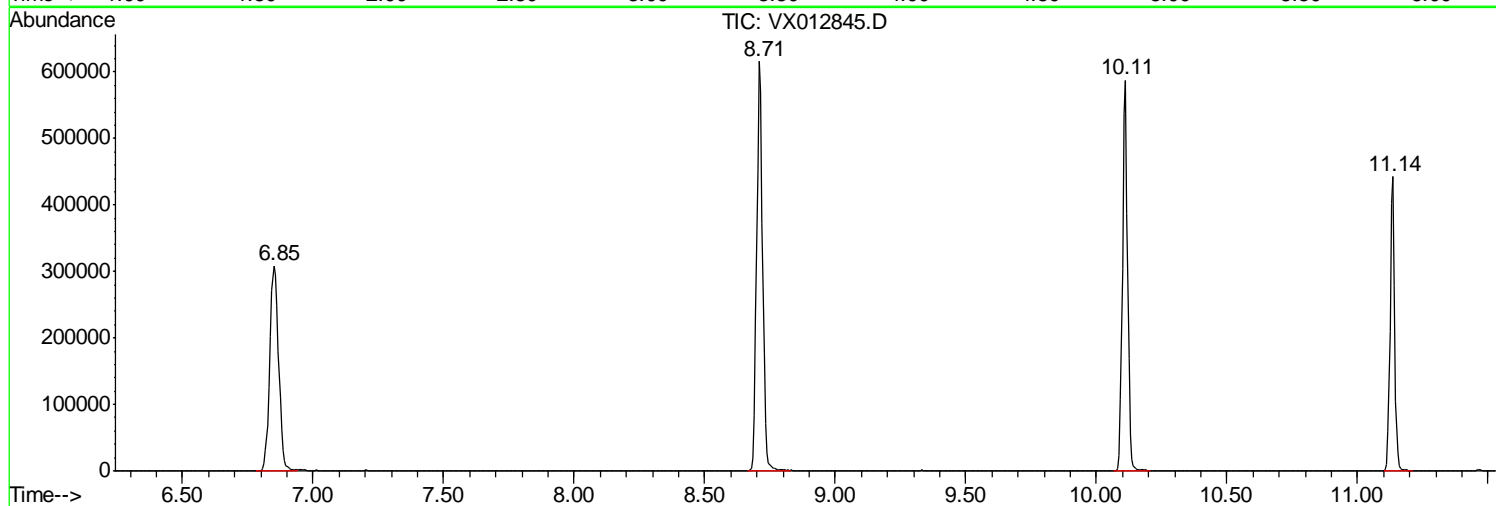
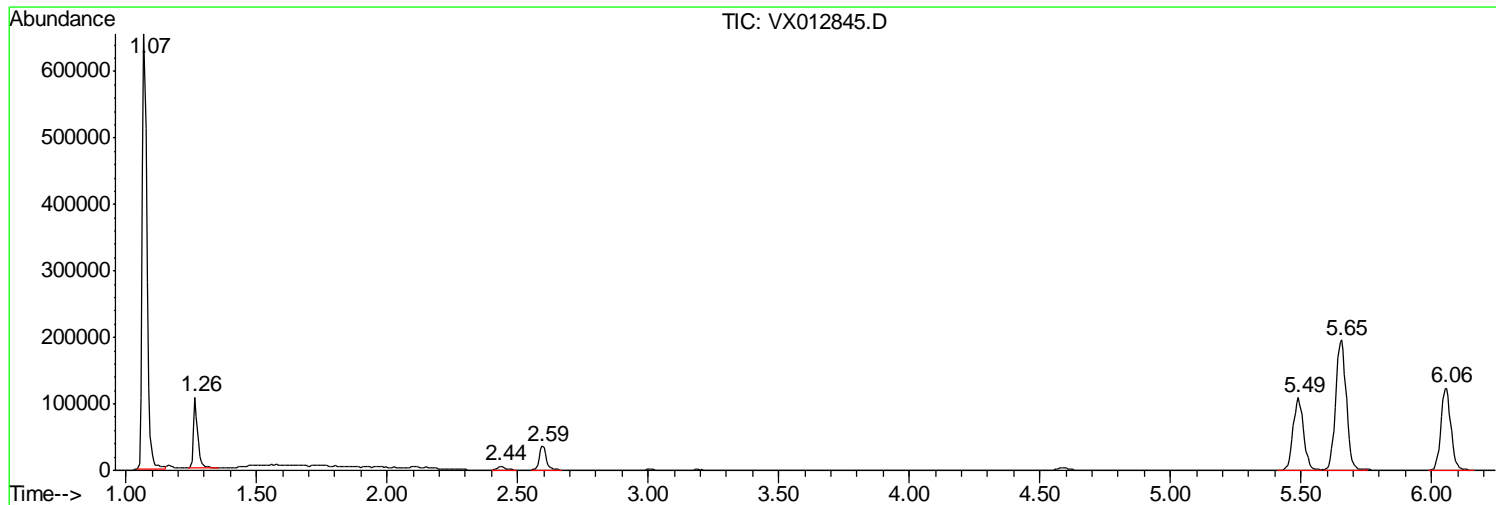
Sum of corrected areas: 5919942

Data Path : Z:\VOASRV\HPCHEM1\MSVOA X\DATA\VX100719\  
Data File : VX012845.D  
Acq On : 07 Oct 2019 17:57  
Operator : JC/SP  
Sample : K5154-18  
Misc : 5.0mL/MSVOA X/WATER  
ALS Vial : 18 Sample Multiplier: 1

Instrument :  
MSVOA\_X  
ClientSampled :  
MW-104I

Quant Method : Z:\VOASRV\HPCHEM1\MSVOA\_X\METHOD\82X092319W.M  
Quant Title : SW846 8260

TIC Library : C:\DATABASE\NIST11.L  
TIC Integration Parameters: LSCINT.P



Data Path : Z:\VOASRV\HPCHEM1\MSVOA X\DATA\VX100719\  
 Data File : VX012845.D  
 Acq On : 07 Oct 2019 17:57  
 Operator : JC/SP  
 Sample : K5154-18  
 Misc : 5.0mL/MSVOA X/WATER  
 ALS Vial : 18 Sample Multiplier: 1

Instrument :  
 MSVOA\_X  
 ClientSampleID :  
 MW-104I

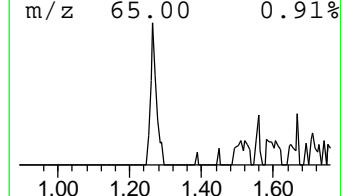
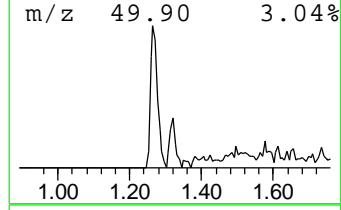
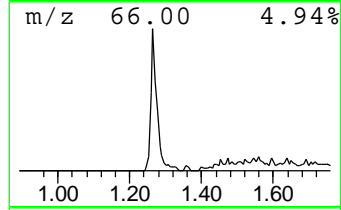
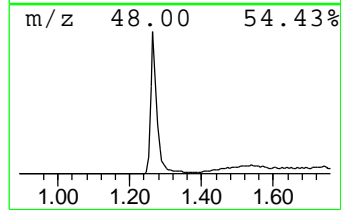
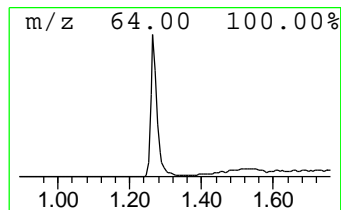
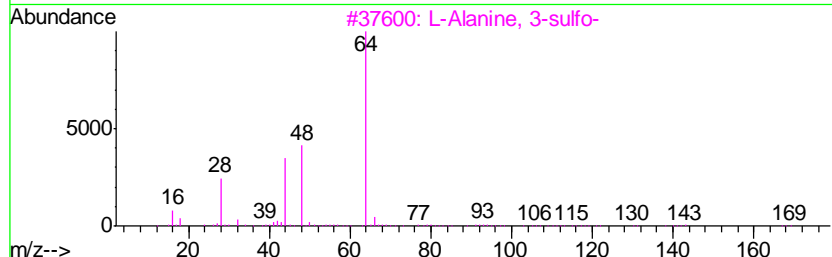
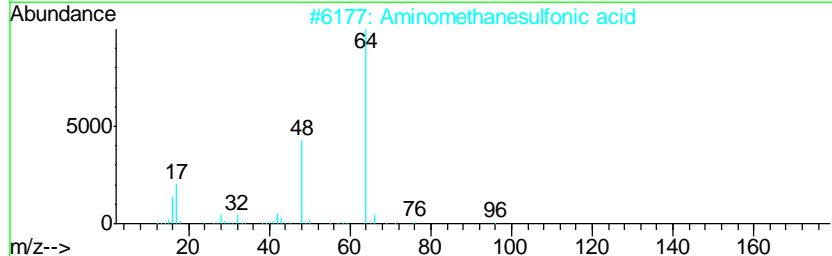
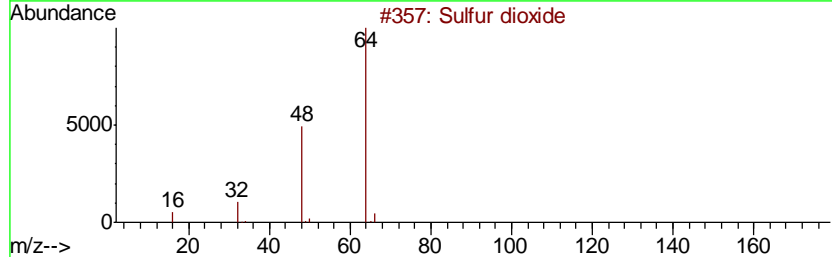
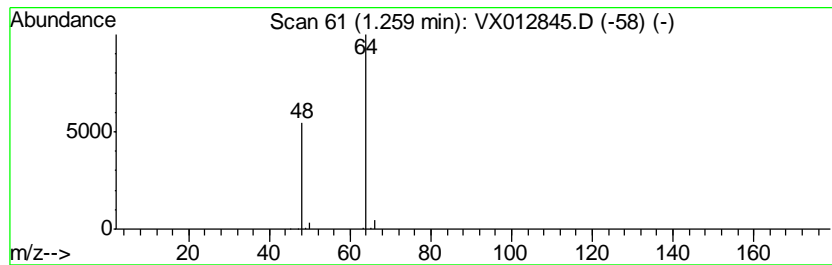
Quant Method : Z:\VOASRV\HPCHEM1\MSVOA\_X\METHOD\82X092319W.M  
 Quant Title : SW846 8260

TIC Library : C:\DATABASE\NIST11.L  
 TIC Integration Parameters: LSCINT.P

\*\*\*\*\*  
 Peak Number 2 Sulfur dioxide Concentration Rank 2

R.T.	EstConc	Area	Relative to ISTD	R.T.
1.26	11.54 ug/l	127125	Pentafluorobenzene	5.65

Hit#	of	Tentative ID	MW	MolForm	CAS#	Qual
1	5	Sulfur dioxide	64	O2S	007446-09-5	83
2		Aminomethanesulfonic acid	111	CH5NO3S	013881-91-9	74
3		L-Alanine, 3-sulfo-	169	C3H7NO5S	000498-40-8	9
4		Ethene, 1,1-difluoro-	64	C2H2F2	000075-38-7	4
5		Ethyl Chloride	64	C2H5Cl	000075-00-3	3



Data Path : Z:\VOASRV\HPCHEM1\MSVOA X\DATA\VX100719\  
 Data File : VX012845.D  
 Acq On : 07 Oct 2019 17:57  
 Operator : JC/SP  
 Sample : K5154-18  
 Misc : 5.0mL/MSVOA X/WATER  
 ALS Vial : 18 Sample Multiplier: 1

Instrument :  
 MSVOA\_X  
 ClientSampleID :  
 MW-104I

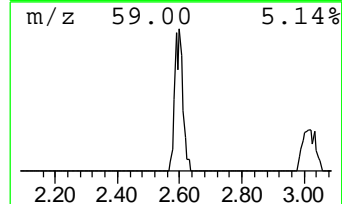
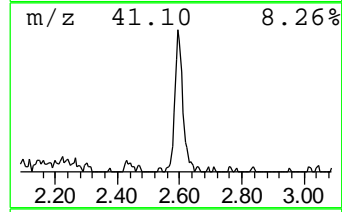
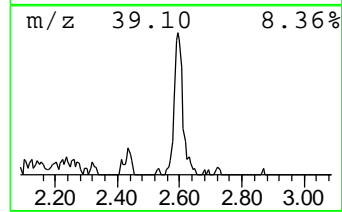
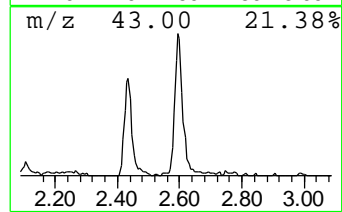
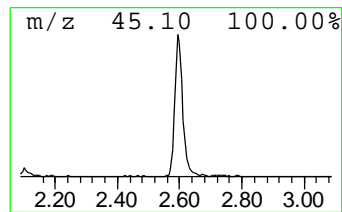
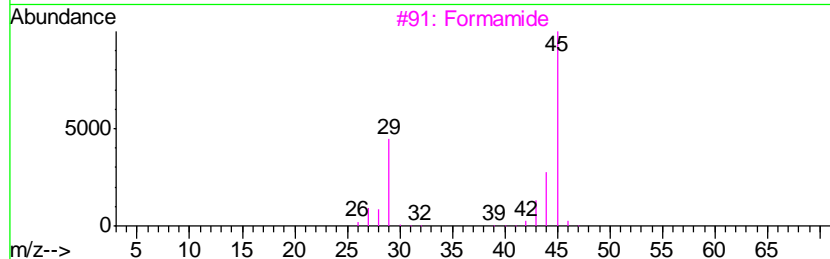
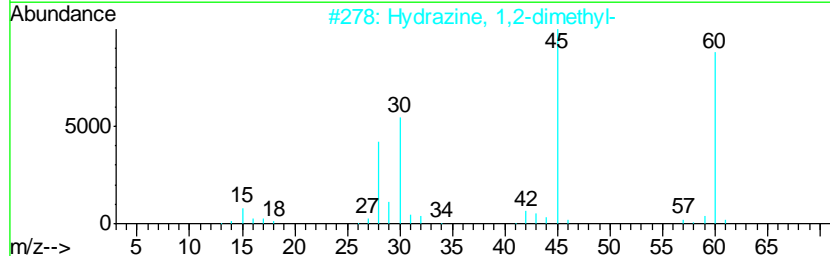
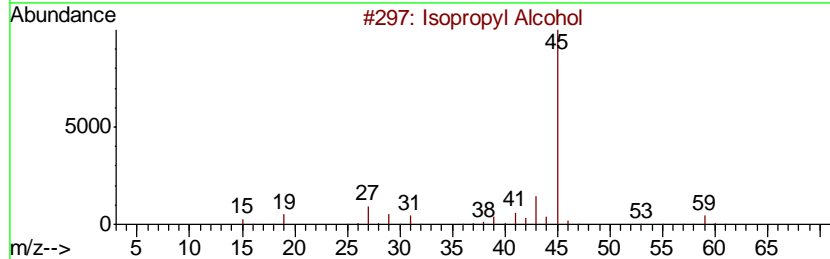
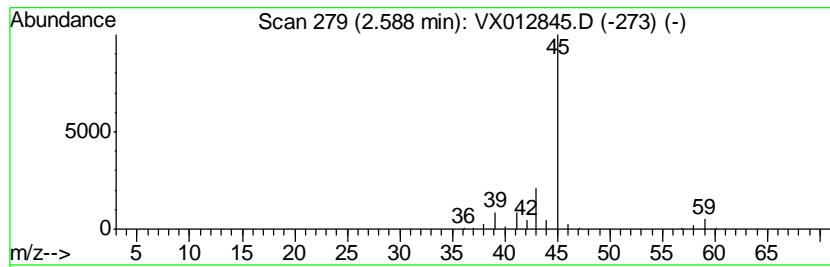
Quant Method : Z:\VOASRV\HPCHEM1\MSVOA\_X\METHOD\82X092319W.M  
 Quant Title : SW846 8260

TIC Library : C:\DATABASE\NIST11.L  
 TIC Integration Parameters: LSCINT.P

\*\*\*\*\*  
 Peak Number 3 Isopropyl Alcohol Concentration Rank 3

R.T.	EstConc	Area	Relative to ISTD	R.T.
2.59	6.00 ug/l	66137	Pentafluorobenzene	5.65

Hit#	of	Tentative ID	MW	MolForm	CAS#	Qual
1	5	Isopropyl Alcohol	60	C3H8O	000067-63-0	86
2		Hydrazine, 1,2-dimethyl-	60	C2H8N2	000540-73-8	9
3		Formamide	45	CH3NO	000075-12-7	5
4		4-Penten-2-ol	86	C5H10O	000625-31-0	4
5		Hydrazine, ethyl-	60	C2H8N2	000624-80-6	4



Data Path : Z:\VOASRV\HPCHEM1\MSVOA\_X\DATA\VX100719\  
Data File : VX012845.D  
Acq On : 07 Oct 2019 17:57  
Operator : JC/SP  
Sample : K5154-18  
Misc : 5.0mL/MSVOA\_X/WATER  
ALS Vial : 18 Sample Multiplier: 1

Instrument :  
MSVOA\_X  
ClientSampleId :  
MW-104I

Quant Method : Z:\VOASRV\HPCHEM1\MSVOA\_X\METHOD\82X092319W.M  
Quant Title : SW846 8260

TIC Library : C:\DATABASE\NIST11.L  
TIC Integration Parameters: LSCINT.P

TIC Top Hit name	RT	EstConc	Units	Response	--Internal Standard--			
					#	RT	Resp	Conc
Sulfur dioxide	1.26	11.5	ug/l	127125	1	5.65	550782	50.0
Isopropyl Alcohol	2.59	6.0	ug/l	66137	1	5.65	550782	50.0