

Data Path : Z:\VOASRV\HPCHEM1\MSVOA X\DATA\VX100719\  
 Data File : VX012848.D  
 Acq On : 07 Oct 2019 19:07  
 Operator : JC/SP  
 Sample : K5190-04  
 Misc : 5.0mL/MSVOA X/WATER  
 ALS Vial : 21 Sample Multiplier: 1

Instrument :  
 MSVOA\_X  
 ClientSampleId :  
 FC-MW09S-20191002

Integration Parameters: RTEINT.P

Integrator: RTE  
 Smoothing : ON Filtering: 5  
 Sampling : 1 Min Area: 3 % of largest Peak  
 Start Thrs: 0.2 Max Peaks: 100  
 Stop Thrs : 0 Peak Location: TOP

If leading or trailing edge < 100 prefer < Baseline drop else tangent >  
 Peak separation: 5

Method : Z:\VOASRV\HPCHEM1\MSVOA\_X\METHOD\82X092319W.M  
 Title : SW846 8260

Signal : TIC

peak #	R.T. min	first scan	max scan	last scan	PK TY	peak height	corr. area	corr. % max.	% of total
1	1.070	26	30	43	rBV	291972	372489	38.51%	6.843%
2	1.265	58	62	69	rBV	79186	91997	9.51%	1.690%
3	2.436	247	254	264	rVB	5898	11339	1.17%	0.208%
4	2.594	272	280	292	rBV	64418	116594	12.05%	2.142%
5	5.490	744	755	768	rBV	105447	299248	30.94%	5.498%
6	5.649	770	781	796	rVV	193969	546664	56.52%	10.043%
7	6.057	837	848	863	rBV	123773	327933	33.90%	6.025%
8	6.850	968	978	995	rBV	303561	720901	74.53%	13.244%
9	8.709	1275	1283	1299	rBV	612274	967254	100.00%	17.770%
10	10.111	1507	1513	1529	rBV	581116	791972	81.88%	14.550%
11	11.135	1675	1681	1692	rBV	419089	556412	57.52%	10.222%
12	12.074	1829	1835	1844	rBV	526587	640295	66.20%	11.763%

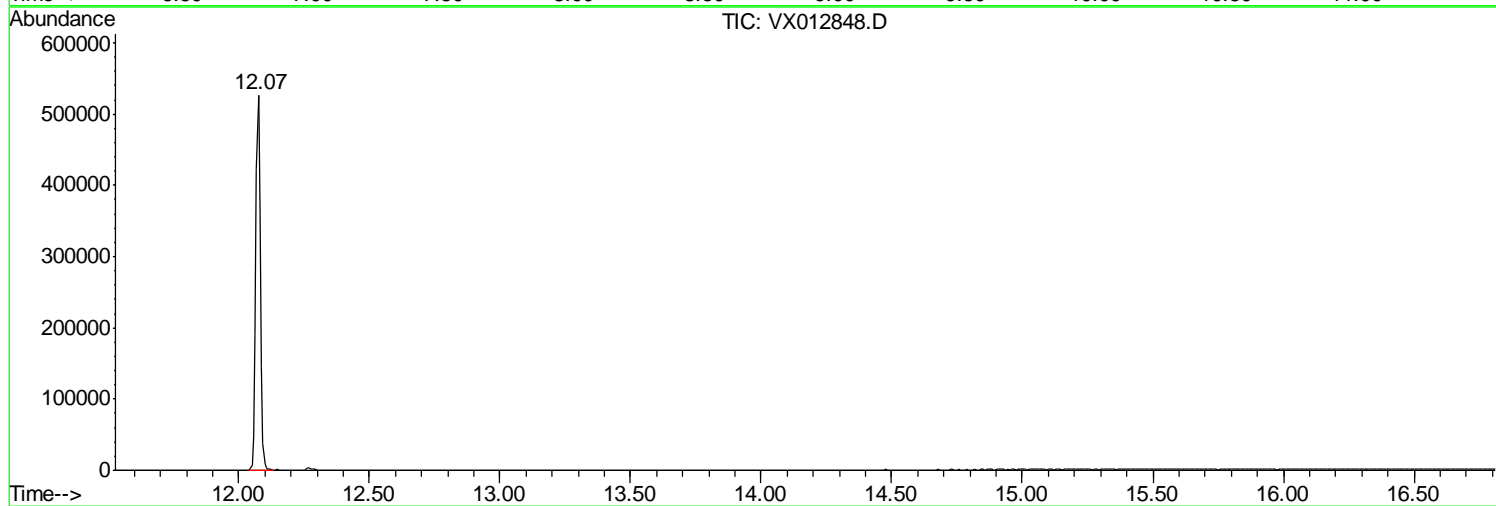
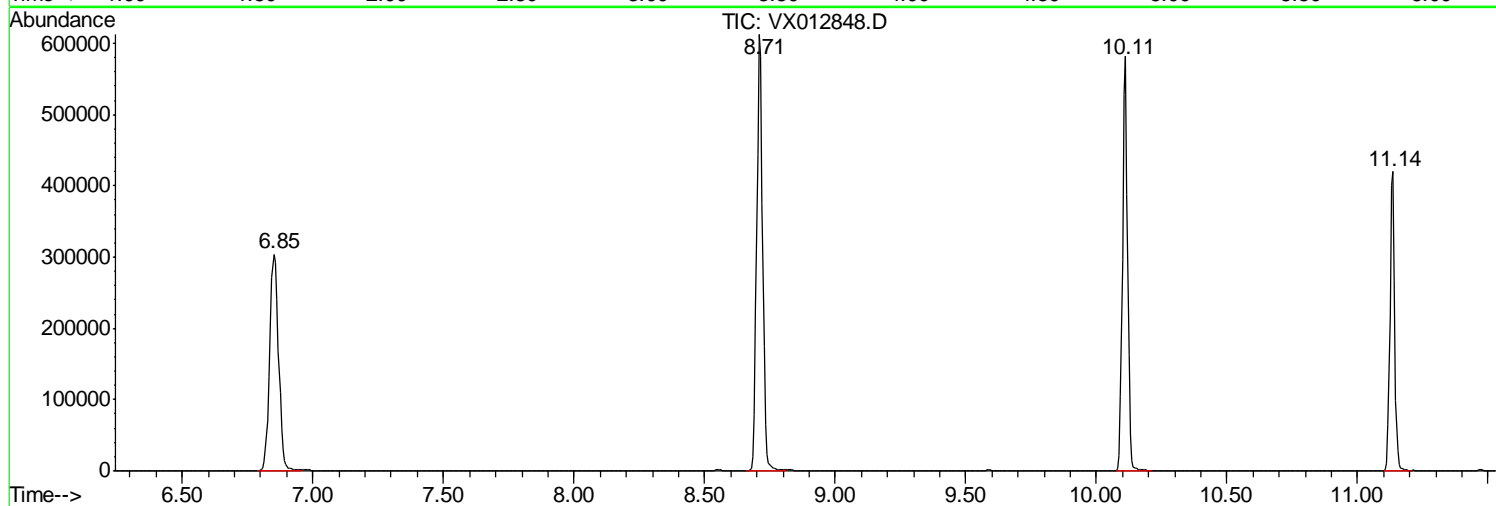
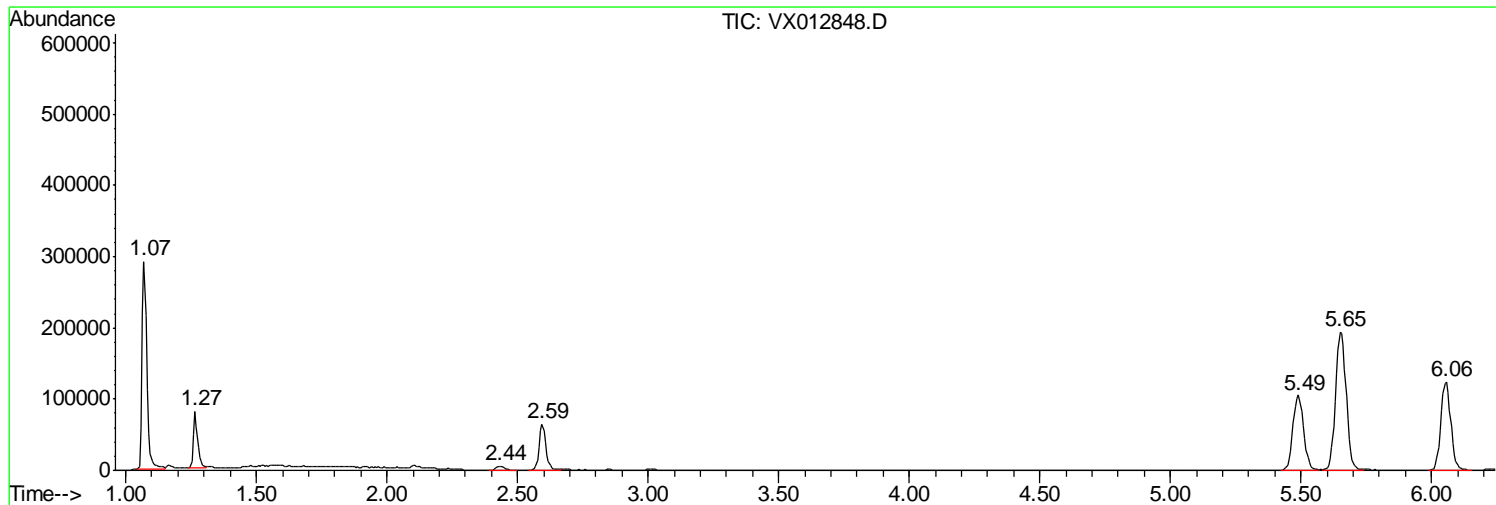
Sum of corrected areas: 5443098

Data Path : Z:\VOASRV\HPCHEM1\MSVOA X\DATA\VX100719\  
Data File : VX012848.D  
Acq On : 07 Oct 2019 19:07  
Operator : JC/SP  
Sample : K5190-04  
Misc : 5.0mL/MSVOA X/WATER  
ALS Vial : 21 Sample Multiplier: 1

Instrument :  
MSVOA\_X  
ClientSampled :  
FC-MW09S-20191002

Quant Method : Z:\VOASRV\HPCHEM1\MSVOA\_X\METHOD\82X092319W.M  
Quant Title : SW846 8260

TIC Library : C:\DATABASE\NIST11.L  
TIC Integration Parameters: LSCINT.P



Data Path : Z:\VOASRV\HPCHEM1\MSVOA X\DATA\VX100719\  
 Data File : VX012848.D  
 Acq On : 07 Oct 2019 19:07  
 Operator : JC/SP  
 Sample : K5190-04  
 Misc : 5.0mL/MSVOA X/WATER  
 ALS Vial : 21 Sample Multiplier: 1

Instrument :  
 MSVOA\_X  
 ClientSampled :  
 FC-MW09S-20191002

Quant Method : Z:\VOASRV\HPCHEM1\MSVOA\_X\METHOD\82X092319W.M  
 Quant Title : SW846 8260

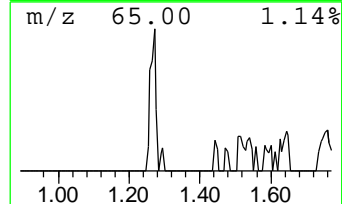
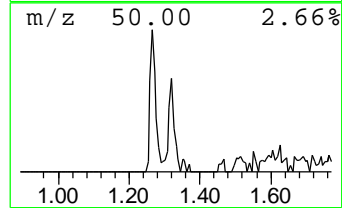
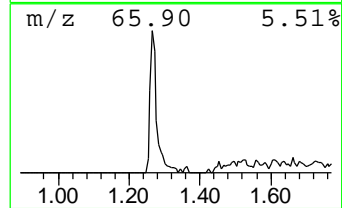
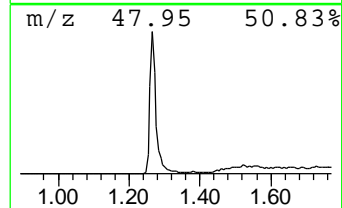
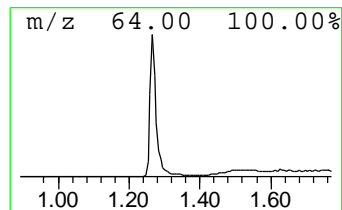
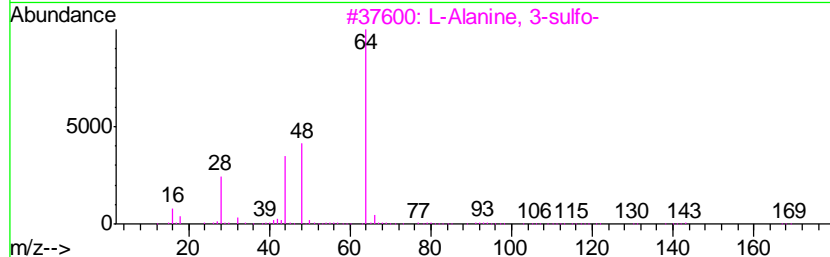
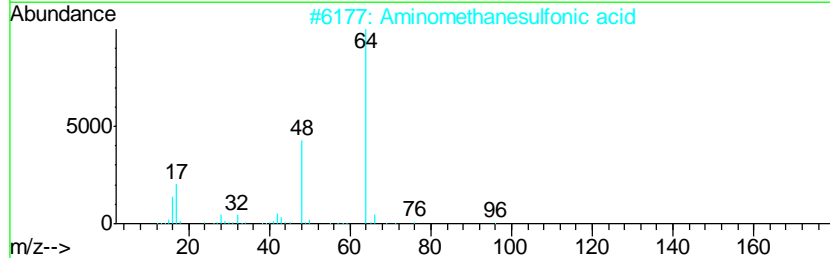
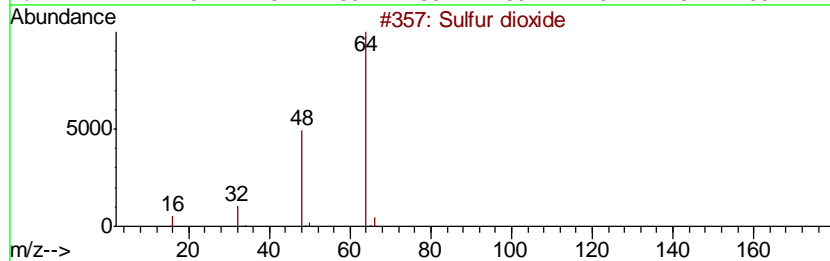
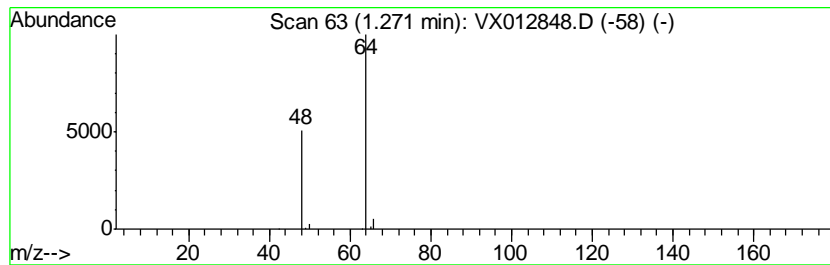
TIC Library : C:\DATABASE\NIST11.L  
 TIC Integration Parameters: LSCINT.P

\*\*\*\*\*  
 Peak Number 2 Sulfur dioxide Concentration Rank 3

R.T.	EstConc	Area	Relative to ISTD	R.T.
1.27	8.41 ug/l	91997	Pentafluorobenzene	5.65

Hit#	of	Tentative ID	MW	MolForm	CAS#	Qual
1	5	Sulfur dioxide	64	O2S	007446-09-5	90
2		Aminomethanesulfonic acid	111	CH5NO3S	013881-91-9	74
3		L-Alanine, 3-sulfo-	169	C3H7NO5S	000498-40-8	9
4		Ethene, 1,1-difluoro-	64	C2H2F2	000075-38-7	4
5		Ethyl Chloride	64	C2H5Cl	000075-00-3	3



Data Path : Z:\VOASRV\HPCHEM1\MSVOA X\DATA\VX100719\  
 Data File : VX012848.D  
 Acq On : 07 Oct 2019 19:07  
 Operator : JC/SP  
 Sample : K5190-04  
 Misc : 5.0mL/MSVOA X/WATER  
 ALS Vial : 21 Sample Multiplier: 1

Instrument :  
 MSVOA\_X  
 ClientSampleID :  
 FC-MW09S-20191002

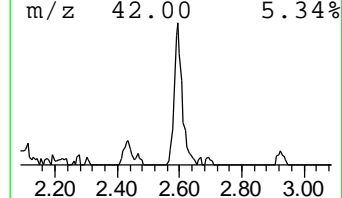
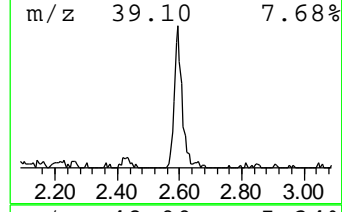
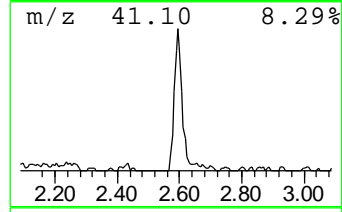
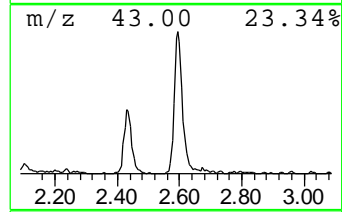
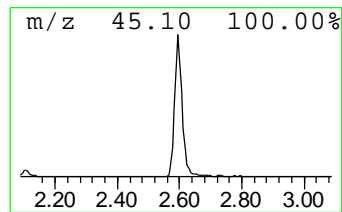
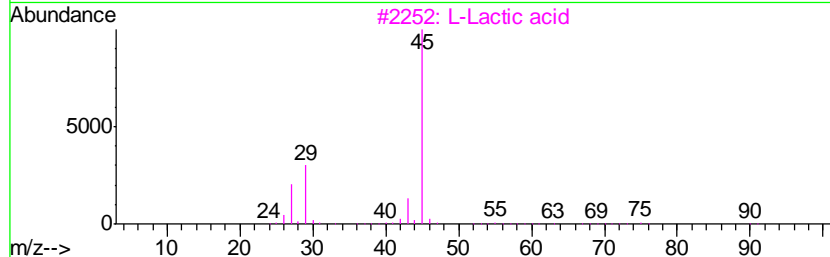
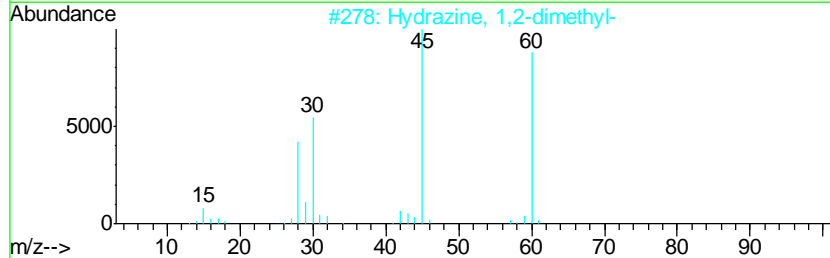
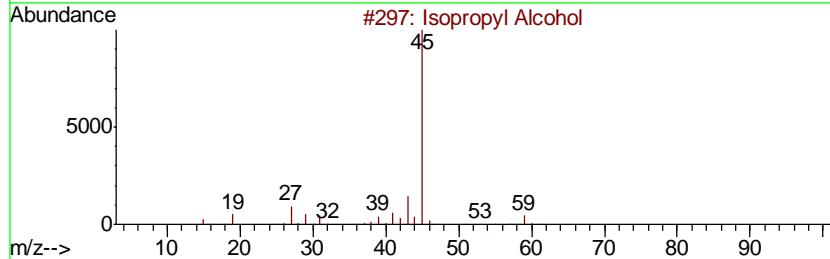
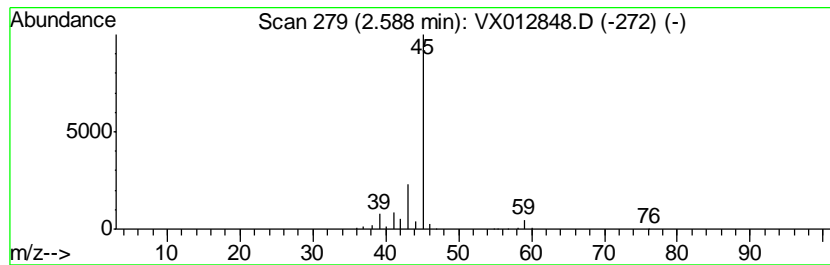
Quant Method : Z:\VOASRV\HPCHEM1\MSVOA\_X\METHOD\82X092319W.M  
 Quant Title : SW846 8260

TIC Library : C:\DATABASE\NIST11.L  
 TIC Integration Parameters: LSCINT.P

\*\*\*\*\*  
 Peak Number 3 Isopropyl Alcohol Concentration Rank 2

R.T.	EstConc	Area	Relative to ISTD	R.T.
2.59	10.66 ug/l	116594	Pentafluorobenzene	5.65

Hit#	of	Tentative ID	MW	MolForm	CAS#	Qual
1	5	Isopropyl Alcohol	60	C3H8O	000067-63-0	86
2		Hydrazine, 1,2-dimethyl-	60	C2H8N2	000540-73-8	9
3		L-Lactic acid	90	C3H6O3	000079-33-4	9
4		Formamide	45	CH3NO	000075-12-7	5
5		Hydrazine, ethyl-	60	C2H8N2	000624-80-6	4



Data Path : Z:\VOASRV\HPCHEM1\MSVOA\_X\DATA\VX100719\  
Data File : VX012848.D  
Acq On : 07 Oct 2019 19:07  
Operator : JC/SP  
Sample : K5190-04  
Misc : 5.0mL/MSVOA\_X/WATER  
ALS Vial : 21 Sample Multiplier: 1

Instrument :  
MSVOA\_X  
ClientSampleId :  
FC-MW09S-20191002

Quant Method : Z:\VOASRV\HPCHEM1\MSVOA\_X\METHOD\82X092319W.M  
Quant Title : SW846 8260

TIC Library : C:\DATABASE\NIST11.L  
TIC Integration Parameters: LSCINT.P

TIC Top Hit name	RT	EstConc	Units	Response	--Internal Standard--			
					#	RT	Resp	Conc
Sulfur dioxide	1.27	8.4	ug/l	91997	1	5.65	546664	50.0
Isopropyl Alcohol	2.59	10.7	ug/l	116594	1	5.65	546664	50.0