

Data Path : Z:\VOASRV\HPCHEM1\MSVOA X\DATA\VX100719\
 Data File : VX012869.D
 Acq On : 08 Oct 2019 04:26
 Operator : JC/SP
 Sample : K5216-05
 Misc : 5.0mL/MSVOA X/WATER
 ALS Vial : 45 Sample Multiplier: 1

Instrument :
 MSVOA_X
 ClientSampleId :
 S49-0542

Integration Parameters: RTEINT.P
 Integrator: RTE
 Smoothing : ON Filtering: 5
 Sampling : 1 Min Area: 3 % of largest Peak
 Start Thrs: 0.2 Max Peaks: 100
 Stop Thrs : 0 Peak Location: TOP

If leading or trailing edge < 100 prefer < Baseline drop else tangent >
 Peak separation: 5

Method : Z:\VOASRV\HPCHEM1\MSVOA_X\METHOD\82X092319W.M
 Title : SW846 8260

Signal : TIC

peak #	R.T. min	first scan	max scan	last scan	PK TY	peak height	corr. area	corr. % max.	% of total
1	1.070	26	30	42	rBV	553539	669289	69.36%	11.326%
2	1.265	58	62	69	rBV	46509	55488	5.75%	0.939%
3	2.594	270	280	290	rBV	19363	35986	3.73%	0.609%
4	3.009	338	348	356	rVB	4230	9898	1.03%	0.167%
5	4.588	598	607	616	rBV2	8081	22133	2.29%	0.375%
6	5.490	743	755	769	rBV2	105173	301292	31.22%	5.098%
7	5.648	771	781	796	rVV	193431	546415	56.62%	9.246%
8	6.051	835	847	862	rBV	124853	328999	34.09%	5.567%
9	6.849	967	978	995	rBV	303564	719491	74.56%	12.175%
10	7.209	1025	1037	1048	rBV	98743	210594	21.82%	3.564%
11	8.709	1275	1283	1299	rBV	605822	964975	100.00%	16.329%
12	10.111	1507	1513	1530	rBV	572924	801833	83.09%	13.569%
13	11.135	1675	1681	1694	rVB	448289	574358	59.52%	9.719%
14	12.074	1829	1835	1847	rBV	551980	668755	69.30%	11.317%

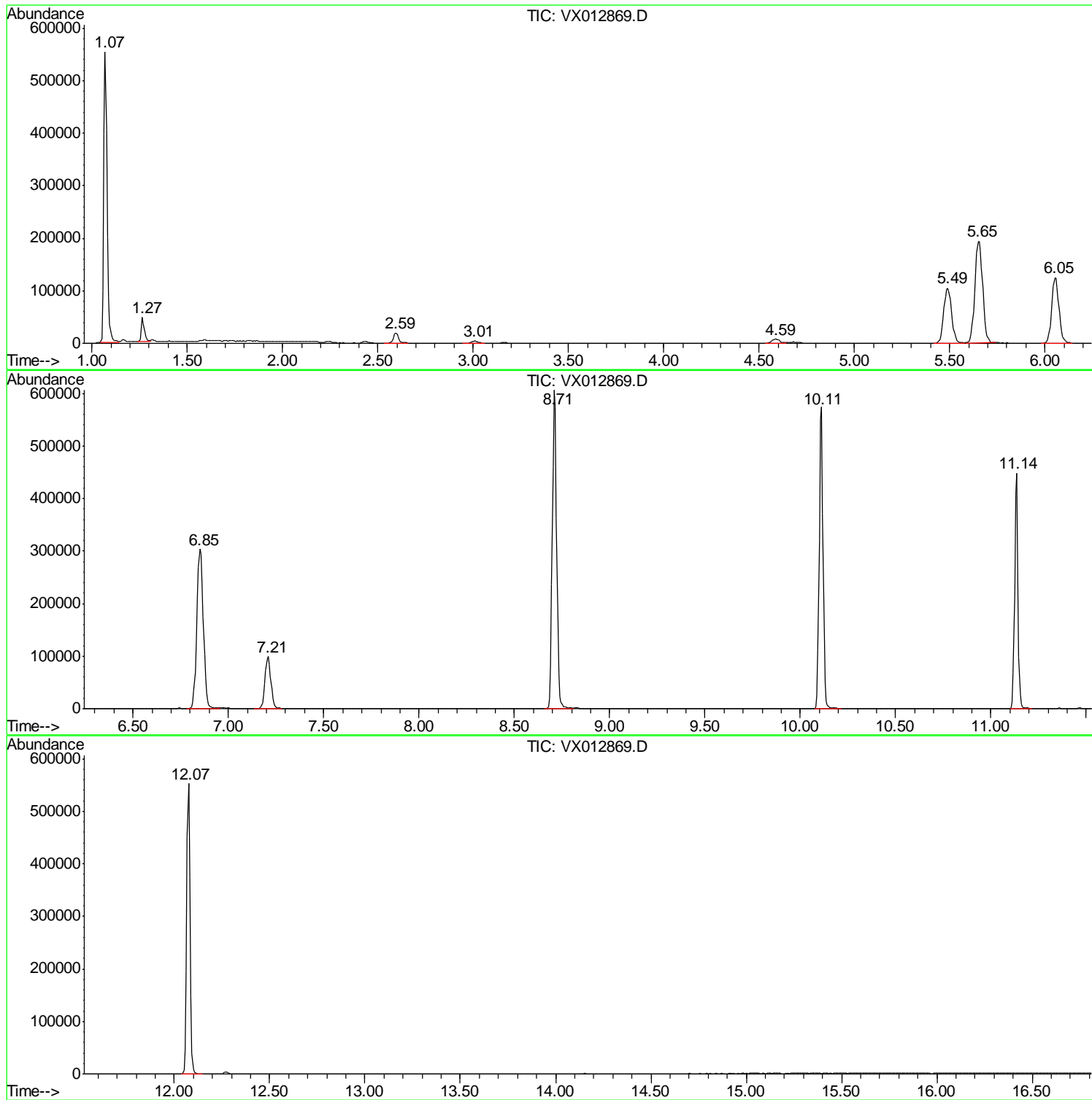
Sum of corrected areas: 5909506

Data Path : Z:\VOASRV\HPCHEM1\MSVOA X\DATA\VX100719\
Data File : VX012869.D
Acq On : 08 Oct 2019 04:26
Operator : JC/SP
Sample : K5216-05
Misc : 5.0mL/MSVOA X/WATER
ALS Vial : 45 Sample Multiplier: 1

Instrument :
MSVOA_X
ClientSampled :
S49-0542

Quant Method : Z:\VOASRV\HPCHEM1\MSVOA_X\METHOD\82X092319W.M
Quant Title : SW846 8260

TIC Library : C:\DATABASE\NIST11.L
TIC Integration Parameters: LSCINT.P



Data Path : Z:\VOASRV\HPCHEM1\MSVOA X\DATA\VX100719\
 Data File : VX012869.D
 Acq On : 08 Oct 2019 04:26
 Operator : JC/SP
 Sample : K5216-05
 Misc : 5.0mL/MSVOA X/WATER
 ALS Vial : 45 Sample Multiplier: 1

Instrument :
 MSVOA_X
 ClientSampleID :
 S49-0542

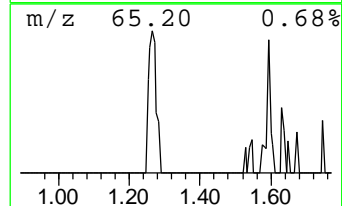
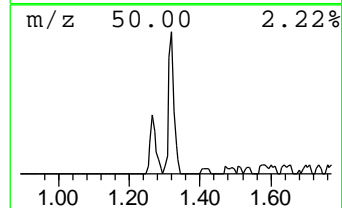
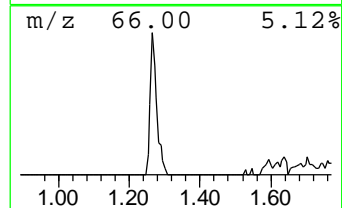
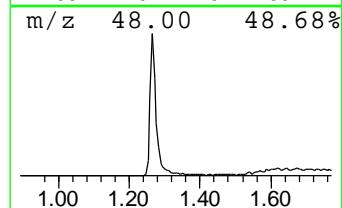
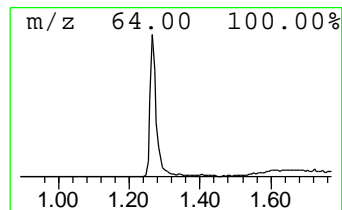
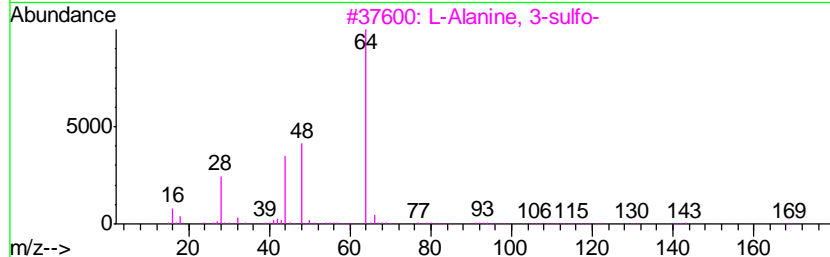
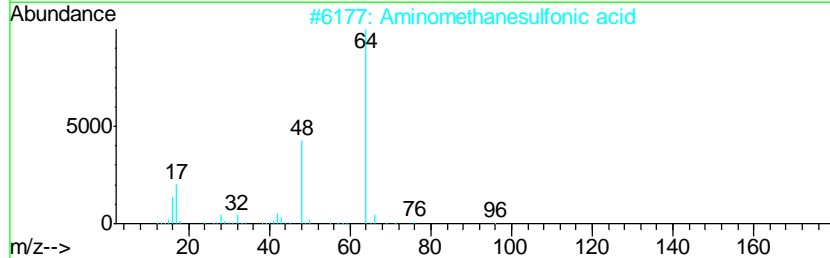
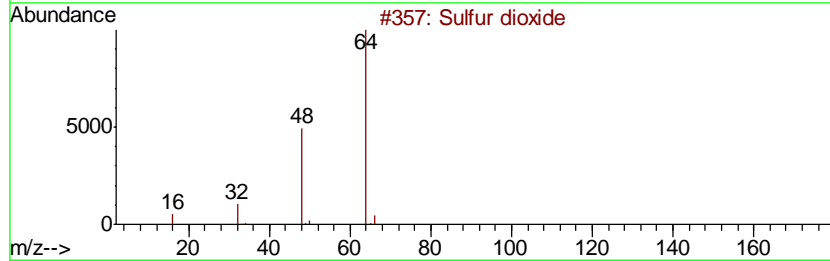
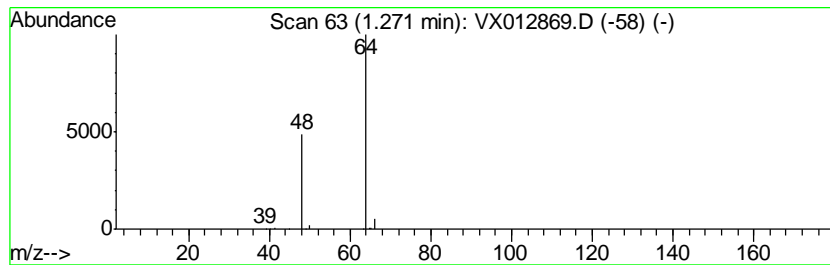
Quant Method : Z:\VOASRV\HPCHEM1\MSVOA_X\METHOD\82X092319W.M
 Quant Title : SW846 8260

TIC Library : C:\DATABASE\NIST11.L
 TIC Integration Parameters: LSCINT.P

 Peak Number 2 Sulfur dioxide Concentration Rank 2

R.T.	EstConc	Area	Relative to ISTD	R.T.
1.27	5.08 ug/l	55488	Pentafluorobenzene	5.65

Hit#	of	Tentative ID	MW	MolForm	CAS#	Qual
1	5	Sulfur dioxide	64	O2S	007446-09-5	90
2		Aminomethanesulfonic acid	111	CH5NO3S	013881-91-9	64
3		L-Alanine, 3-sulfo-	169	C3H7NO5S	000498-40-8	9
4		Ethene, 1,1-difluoro-	64	C2H2F2	000075-38-7	4
5		Ethyl Chloride	64	C2H5Cl	000075-00-3	3



Data Path : Z:\VOASRV\HPCHEM1\MSVOA_X\DATA\VX100719\
Data File : VX012869.D
Acq On : 08 Oct 2019 04:26
Operator : JC/SP
Sample : K5216-05
Misc : 5.0mL/MSVOA_X/WATER
ALS Vial : 45 Sample Multiplier: 1

Instrument :
MSVOA_X
ClientSampleId :
S49-0542

Quant Method : Z:\VOASRV\HPCHEM1\MSVOA_X\METHOD\82X092319W.M
Quant Title : SW846 8260

TIC Library : C:\DATABASE\NIST11.L
TIC Integration Parameters: LSCINT.P

TIC Top Hit name	RT	EstConc	Units	Response	--Internal Standard--			
					#	RT	Resp	Conc
Sulfur dioxide	1.27	5.1	ug/l	55488	1	5.65	546415	50.0