

Data Path : Z:\voasrv\HPCHEM1\MSVOA\_X\Data\VX100722\  
 Data File : VX031986.D  
 Acq On : 08 Oct 2022 02:19  
 Operator : JC/MD  
 Sample : N4937-10  
 Misc : 5.0mL/MSVOA\_X/WATER  
 ALS Vial : 42 Sample Multiplier: 1

Instrument :  
 MSVOA\_X  
 ClientSampleId :  
 MW-116D

Integration Parameters: RTEINT.P

Integrator: RTE  
 Smoothing : ON Filtering: 5  
 Sampling : 1 Min Area: 3 % of largest Peak  
 Start Thrs: 0.2 Max Peaks: 100  
 Stop Thrs : 0 Peak Location: TOP

If leading or trailing edge < 100 prefer < Baseline drop else tangent >  
 Peak separation: 5

Method : Z:\voasrv\HPCHEM1\MSVOA\_X\Method\82X100622W.M  
 Title : SW846 8260

Signal : TIC: VX031986.D\data.ms

peak #	R.T. min	first scan	max scan	last scan	PK TY	peak height	corr. area	corr. % max.	% of total
1	3.117	327	333	342	rVB3	2335	5632	1.29%	0.283%
2	5.385	693	705	722	rBV2	53939	158323	36.14%	7.963%
3	5.550	722	732	744	rBV	52875	151865	34.66%	7.638%
4	5.958	789	799	816	rBV	60371	160533	36.64%	8.074%
5	6.763	921	931	944	rBV	78905	186915	42.66%	9.401%
6	8.647	1234	1240	1251	rBV	269744	438128	100.00%	22.037%
7	10.055	1465	1471	1490	rBV	195506	262661	59.95%	13.211%
8	10.195	1490	1494	1500	rVB	4801	5411	1.24%	0.272%
9	11.079	1634	1639	1649	rBV	220280	285174	65.09%	14.343%
10	12.024	1788	1794	1800	rBV	270514	333548	76.13%	16.776%

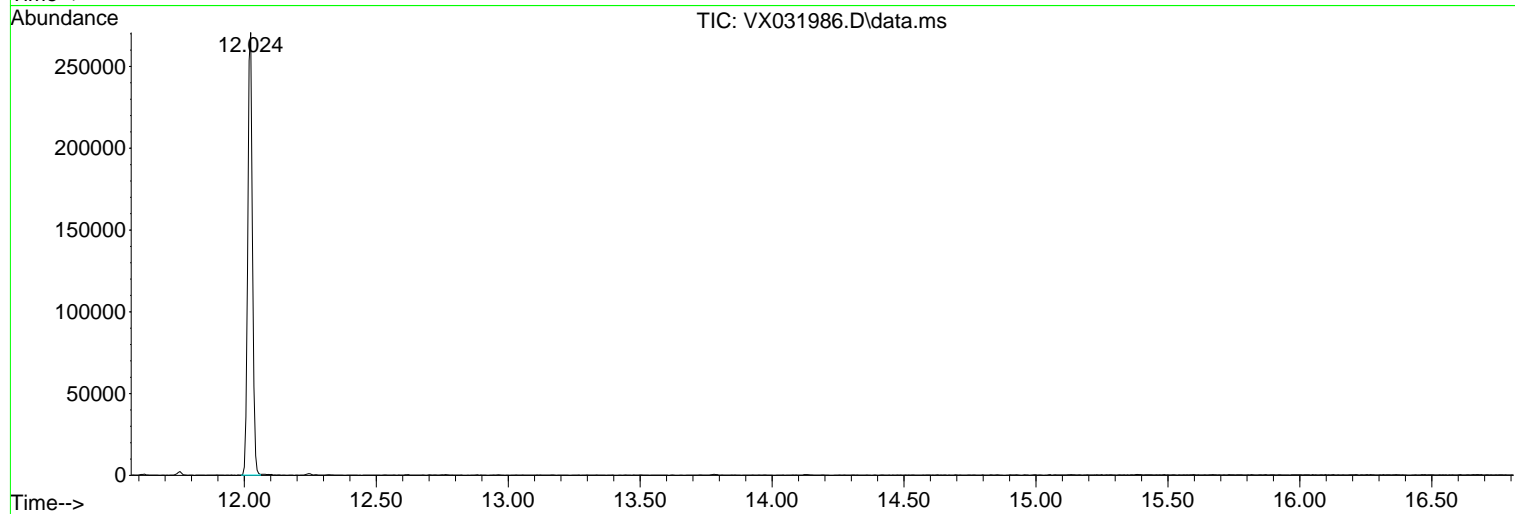
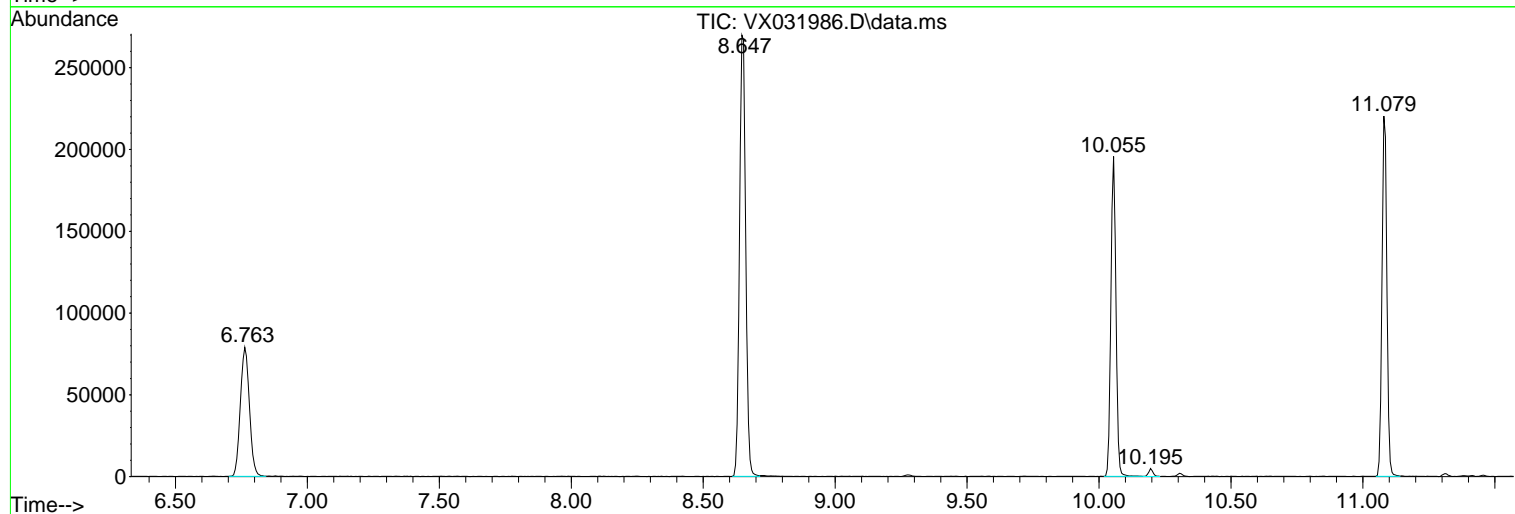
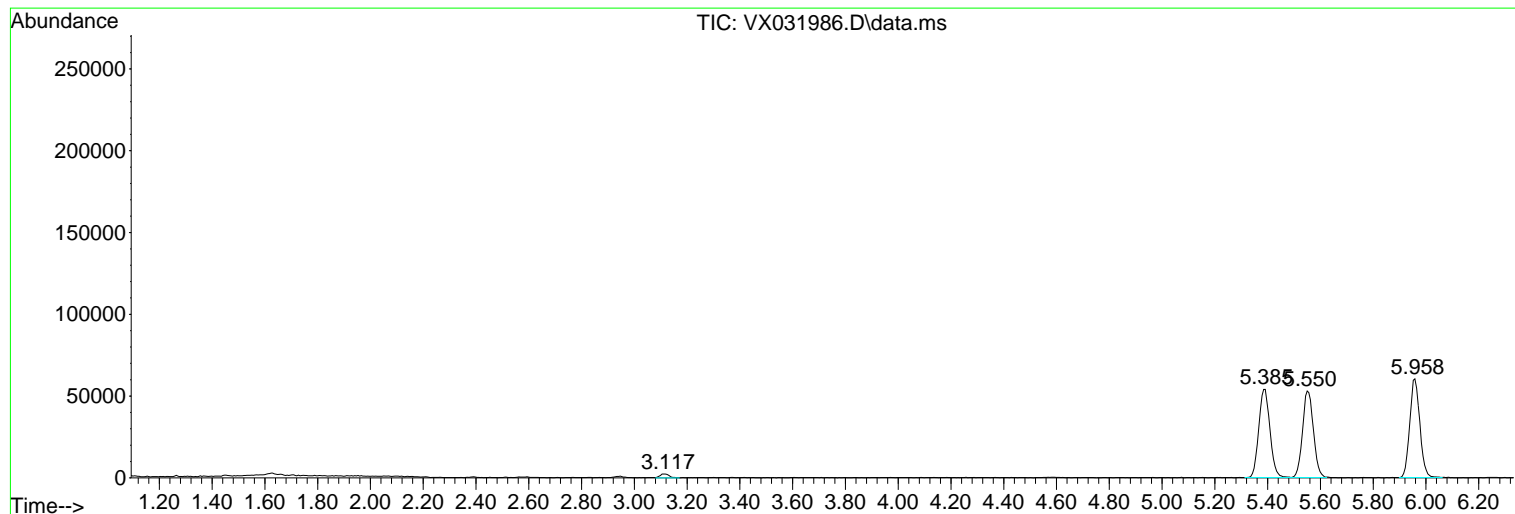
Sum of corrected areas: 1988190

Data Path : Z:\voasrv\HPCHEM1\MSVOA\_X\Data\VX100722\  
 Data File : VX031986.D  
 Acq On : 08 Oct 2022 02:19  
 Operator : JC/MD  
 Sample : N4937-10  
 Misc : 5.0mL/MSVOA\_X/WATER  
 ALS Vial : 42 Sample Multiplier: 1

Instrument :  
 MSVOA\_X  
 ClientSampleId :  
 MW-116D

Quant Method : Z:\voasrv\HPCHEM1\MSVOA\_X\Method\82X100622W.M  
 Quant Title : SW846 8260

TIC Library : C:\Database\NIST20.L  
 TIC Integration Parameters: LSCINT.P



Library Search Compound Report

Data Path : Z:\voasrv\HPCHEM1\MSVOA\_X\Data\VX100722\  
Data File : VX031986.D  
Acq On : 08 Oct 2022 02:19  
Operator : JC/MD  
Sample : N4937-10  
Misc : 5.0mL/MSVOA\_X/WATER  
ALS Vial : 42 Sample Multiplier: 1

Instrument :  
MSVOA\_X  
ClientSampleId :  
MW-116D

Quant Method : Z:\voasrv\HPCHEM1\MSVOA\_X\Method\82X100622W.M  
Quant Title : SW846 8260

TIC Library : C:\Database\NIST20.L  
TIC Integration Parameters: LSCINT.P

No Library Search Compounds Detected

\*\*\*\*\*

Data Path : Z:\voasrv\HPCHEM1\MSVOA\_X\Data\VX100722\  
Data File : VX031986.D  
Acq On : 08 Oct 2022 02:19  
Operator : JC/MD  
Sample : N4937-10  
Misc : 5.0mL/MSVOA\_X/WATER  
ALS Vial : 42 Sample Multiplier: 1

Instrument :  
MSVOA\_X  
ClientSampleId :  
MW-116D

Quant Method : Z:\voasrv\HPCHEM1\MSVOA\_X\Method\82X100622W.M  
Quant Title : SW846 8260

TIC Library : C:\Database\NIST20.L  
TIC Integration Parameters: LSCINT.P

TIC Top Hit name	RT	EstConc	Units	Response	--Internal Standard--		
					#	RT	Resp Conc

---