

Data Path : Z:\VOASRV\HPCHEM1\MSVOA X\DATA\VX100819\
 Data File : VX012921.D
 Acq On : 09 Oct 2019 04:42
 Operator : JC/SP
 Sample : K5154-25
 Misc : 5.0mL/MSVOA X/WATER
 ALS Vial : 45 Sample Multiplier: 1

Instrument :
 MSVOA_X
 ClientSampleId :
 MW-1011

Integration Parameters: RTEINT.P
 Integrator: RTE
 Smoothing : ON Filtering: 5
 Sampling : 1 Min Area: 3 % of largest Peak
 Start Thrs: 0.2 Max Peaks: 100
 Stop Thrs : 0 Peak Location: TOP

If leading or trailing edge < 100 prefer < Baseline drop else tangent >
 Peak separation: 5

Method : Z:\VOASRV\HPCHEM1\MSVOA_X\METHOD\82X100819W.M
 Title : SW846 8260

Signal : TIC

peak #	R.T. min	first scan	max scan	last scan	PK TY	peak height	corr. area	corr. % max.	% of total
1	1.070	26	30	43	rBV	1100146	1297756	100.00%	18.166%
2	1.265	59	62	69	rBV	23505	29674	2.29%	0.415%
3	2.369	236	243	249	rBV	31448	51971	4.00%	0.728%
4	2.594	272	280	289	rBV	50440	91861	7.08%	1.286%
5	3.691	451	460	467	rBV	13683	33260	2.56%	0.466%
6	4.588	597	607	619	rBV3	15740	43723	3.37%	0.612%
7	5.490	744	755	770	rBV	107997	308629	23.78%	4.320%
8	5.655	771	782	797	rVB	195802	549144	42.31%	7.687%
9	6.051	838	847	864	rBV	124347	327301	25.22%	4.582%
10	6.849	968	978	998	rBV	301764	719658	55.45%	10.074%
11	7.209	1029	1037	1051	rVB	92703	194409	14.98%	2.721%
12	8.709	1276	1283	1302	rBV	608104	963699	74.26%	13.490%
13	9.331	1378	1385	1394	rBV	371689	528605	40.73%	7.400%
14	10.111	1507	1513	1524	rBV	571380	794524	61.22%	11.122%
15	11.135	1675	1681	1693	rBV	442702	564812	43.52%	7.906%
16	12.074	1830	1835	1844	rVB	541934	644719	49.68%	9.025%

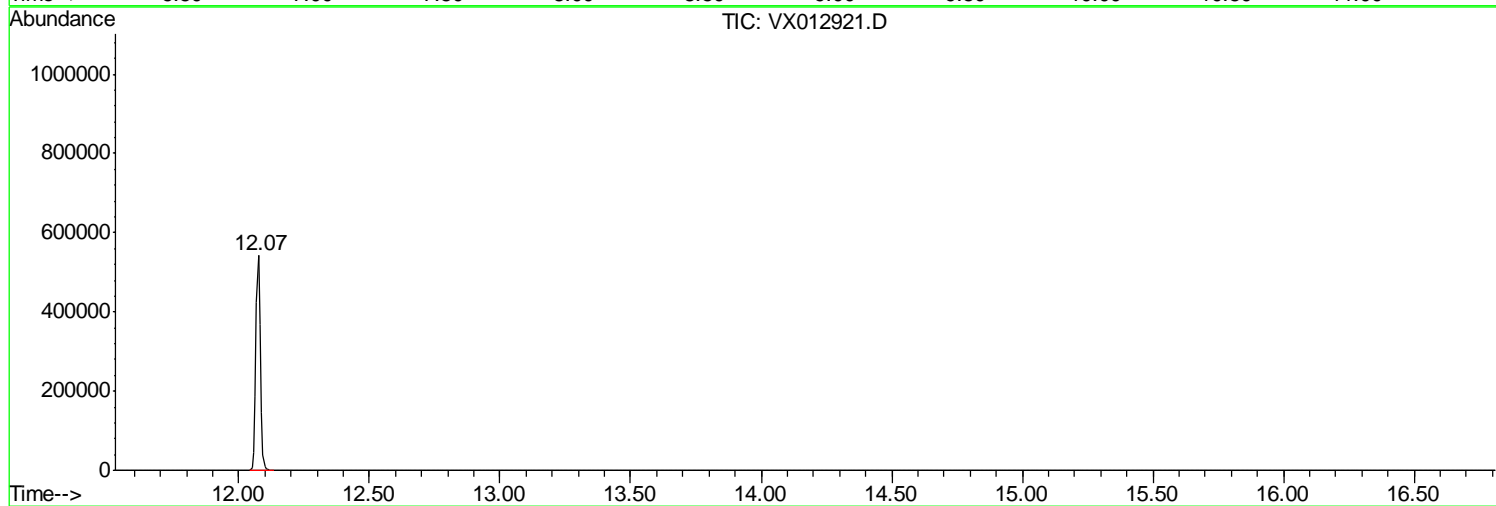
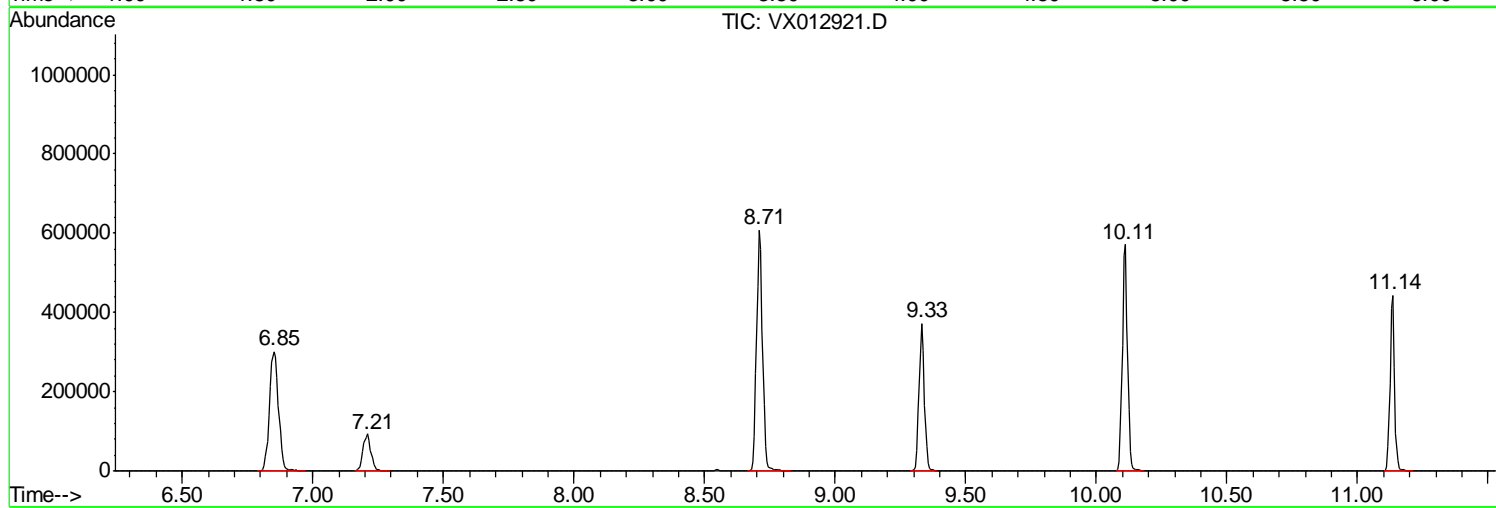
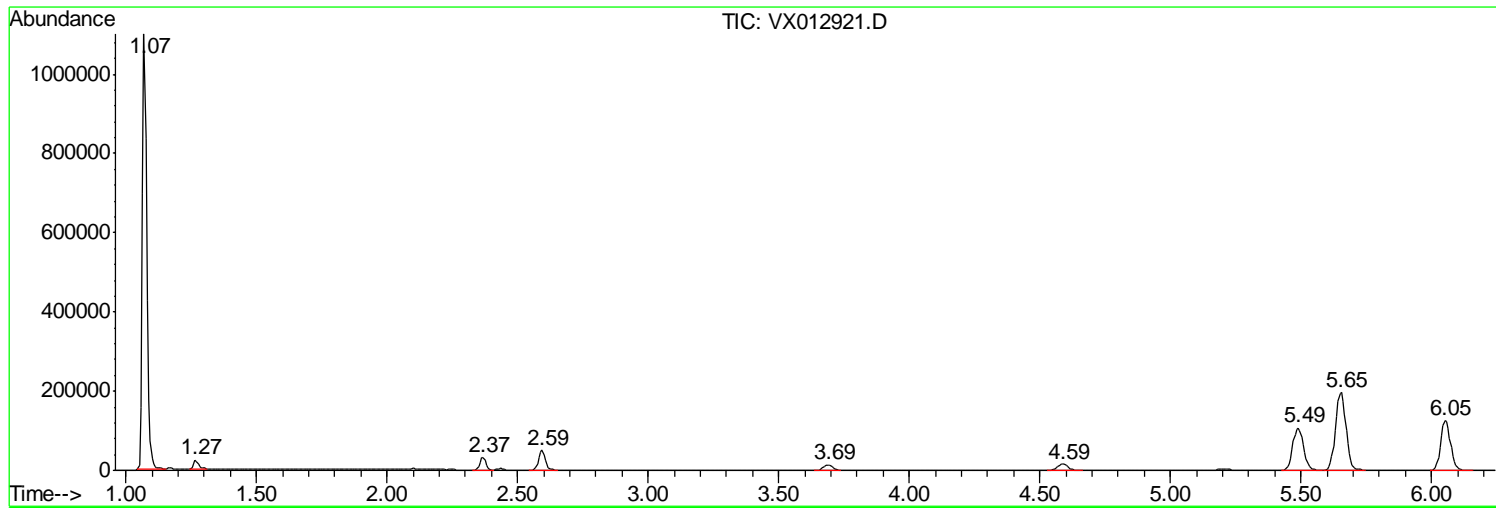
Sum of corrected areas: 7143745

Data Path : Z:\VOASRV\HPCHEM1\MSVOA X\DATA\VX100819\
Data File : VX012921.D
Acq On : 09 Oct 2019 04:42
Operator : JC/SP
Sample : K5154-25
Misc : 5.0mL/MSVOA X/WATER
ALS Vial : 45 Sample Multiplier: 1

Instrument :
MSVOA_X
ClientSampled :
MW-1011

Quant Method : Z:\VOASRV\HPCHEM1\MSVOA_X\METHOD\82X100819W.M
Quant Title : SW846 8260

TIC Library : C:\DATABASE\NIST11.L
TIC Integration Parameters: LSCINT.P



Data Path : Z:\VOASRV\HPCHEM1\MSVOA X\DATA\VX100819\
 Data File : VX012921.D
 Acq On : 09 Oct 2019 04:42
 Operator : JC/SP
 Sample : K5154-25
 Misc : 5.0mL/MSVOA X/WATER
 ALS Vial : 45 Sample Multiplier: 1

Instrument :
 MSVOA_X
 ClientSampled :
 MW-101I

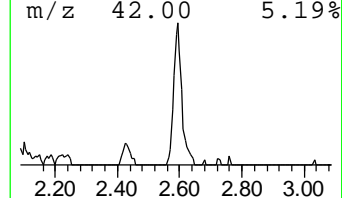
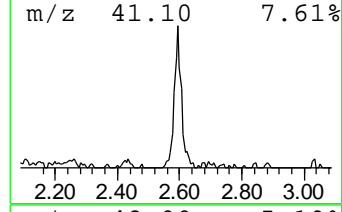
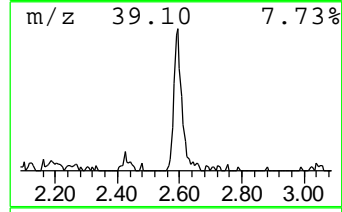
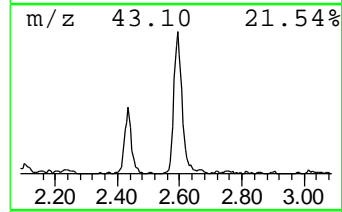
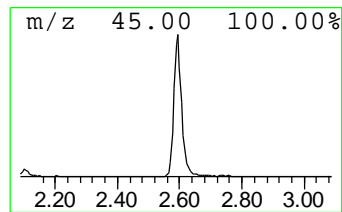
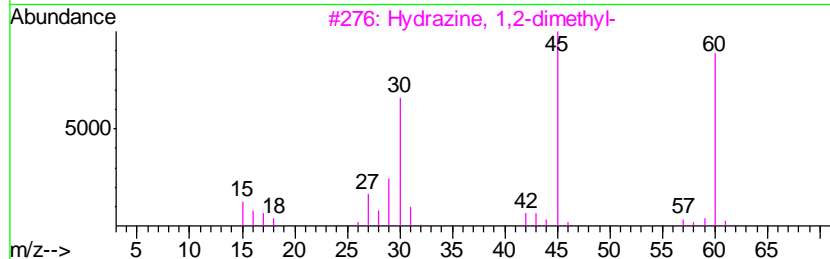
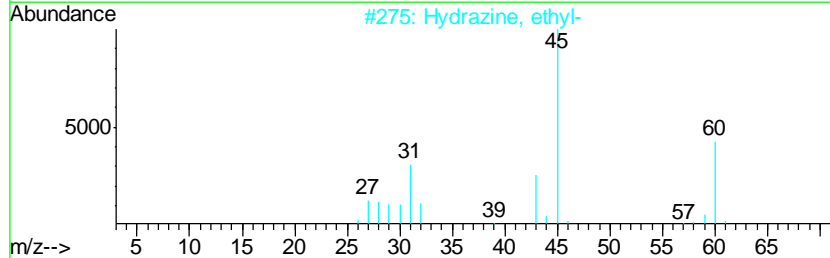
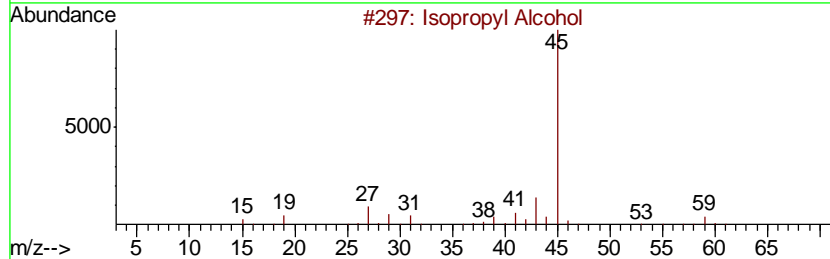
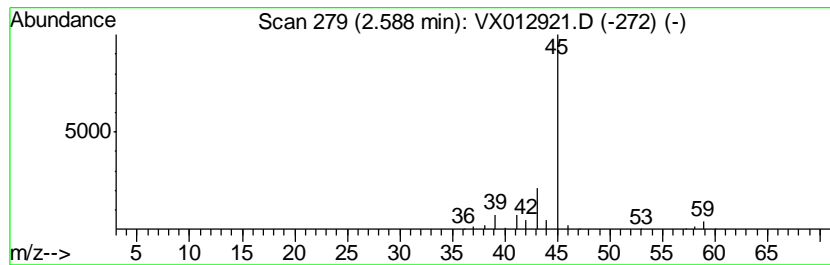
Quant Method : Z:\VOASRV\HPCHEM1\MSVOA_X\METHOD\82X100819W.M
 Quant Title : SW846 8260

TIC Library : C:\DATABASE\NIST11.L
 TIC Integration Parameters: LSCINT.P

 Peak Number 2 Isopropyl Alcohol Concentration Rank 2

R.T.	EstConc	Area	Relative to ISTD	R.T.
2.59	8.36 ug/l	91861	Pentafluorobenzene	5.65

Hit#	of	Tentative ID	MW	MolForm	CAS#	Qual
1	5	Isopropyl Alcohol	60	C3H8O	000067-63-0	86
2		Hydrazine, ethyl-	60	C2H8N2	000624-80-6	40
3		Hydrazine, 1,2-dimethyl-	60	C2H8N2	000540-73-8	9
4		Formamide	45	CH3NO	000075-12-7	5
5		2-Propanone, 1-methoxy-	88	C4H8O2	005878-19-3	4



Data Path : Z:\VOASRV\HPCHEM1\MSVOA_X\DATA\VX100819\
Data File : VX012921.D
Acq On : 09 Oct 2019 04:42
Operator : JC/SP
Sample : K5154-25
Misc : 5.0mL/MSVOA_X/WATER
ALS Vial : 45 Sample Multiplier: 1

Instrument :
MSVOA_X
ClientSampleId :
MW-1011

Quant Method : Z:\VOASRV\HPCHEM1\MSVOA_X\METHOD\82X100819W.M
Quant Title : SW846 8260

TIC Library : C:\DATABASE\NIST11.L
TIC Integration Parameters: LSCINT.P

TIC Top Hit name	RT	EstConc	Units	Response	--Internal Standard--			
					#	RT	Resp	Conc
Isopropyl Alcohol	2.59	8.4	ug/l	91861	1	5.65	549144	50.0