

Data Path : Z:\VOASRV\HPCHEM1\MSVOA X\DATA\VX100918\  
 Data File : VX005166.D  
 Acq On : 09 Oct 2018 18:29  
 Operator : JC/MD  
 Sample : J5284-02DL 5X  
 Misc : 5.0mL/MSVOA X/WATER  
 ALS Vial : 12 Sample Multiplier: 1

**Instrument :**  
 MSVOA\_X  
**ClientSampleId :**  
 RE-125D2-2018001DL

Quant Time: Oct 10 05:54:03 2018  
 Quant Method : Z:\VOASRV\HPCHEM1\MSVOA\_X\METHOD\82X092618W.M  
 Quant Title : SW846 8260  
 QLast Update : Wed Oct 03 04:00:03 2018  
 Response via : Initial Calibration

Internal Standards	R.T.	QIon	Response	Conc	Units	Dev(Min)
1) Pentafluorobenzene	5.67	168	173619	50.00	ug/l	0.00
34) 1,4-Difluorobenzene	6.86	114	276377	50.00	ug/l	0.00
63) Chlorobenzene-d5	10.12	117	279108	50.00	ug/l	0.00
72) 1,4-Dichlorobenzene-d4	12.08	152	152926	50.00	ug/l	0.00

System Monitoring Compounds

33) 1,2-Dichloroethane-d4	6.07	65	136539	55.05	ug/l	0.00
Spiked Amount	50.000		Recovery	=	110.10%	
35) Dibromofluoromethane	5.51	113	115124	49.15	ug/l	0.00
Spiked Amount	50.000		Recovery	=	98.30%	
50) Toluene-d8	8.72	98	407593	52.34	ug/l	0.00
Spiked Amount	50.000		Recovery	=	104.68%	
62) 4-Bromofluorobenzene	11.14	95	145253	51.78	ug/l	0.00
Spiked Amount	50.000		Recovery	=	103.56%	

Target Compounds

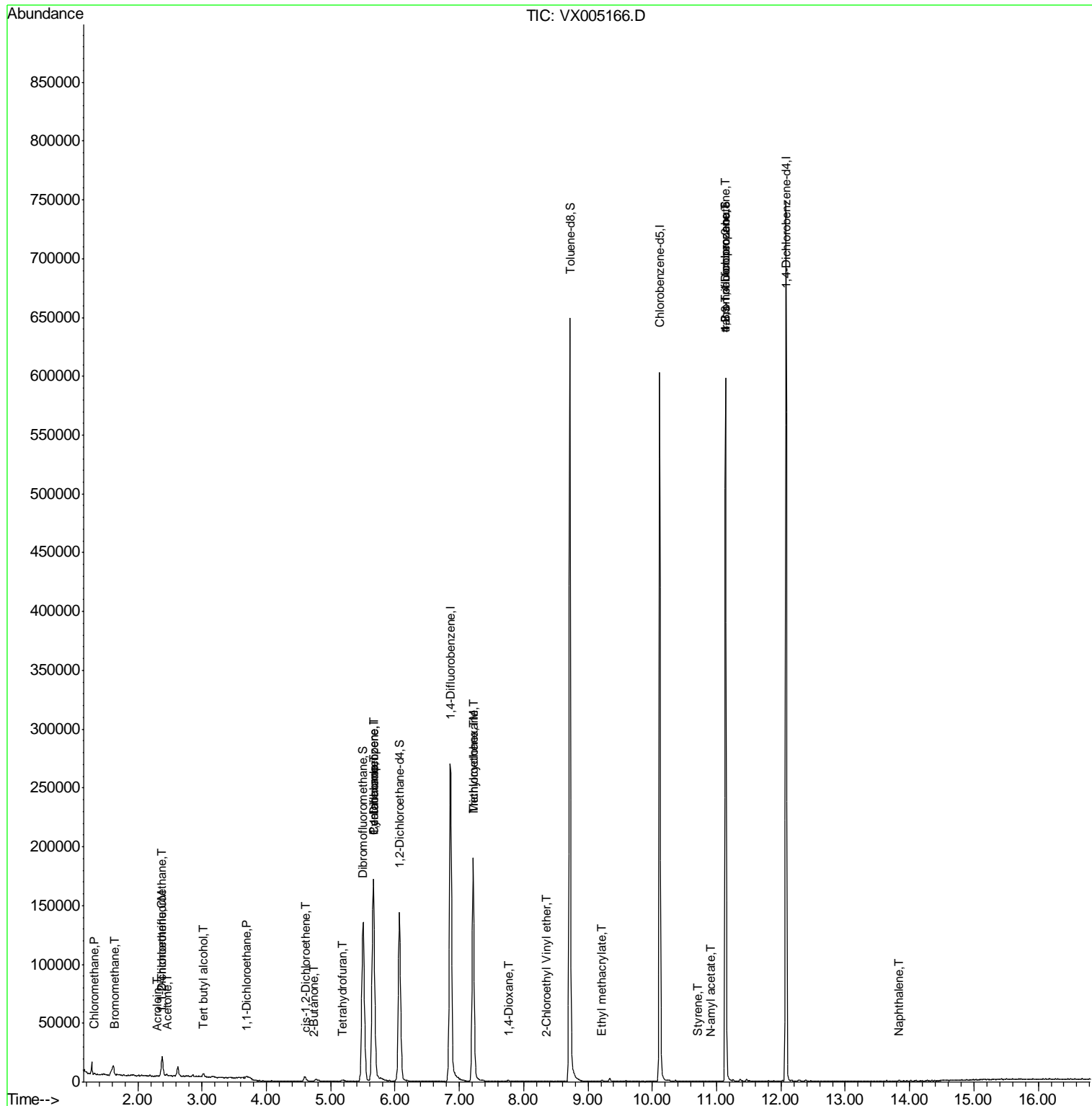
					Qvalue
3) Chloromethane	1.32	50	601	0.209 ug/l	94
5) Bromomethane	1.65	94	502	0.314 ug/l #	60
6) Chloroethane	1.70	64	376	Below Cal	99
9) 1,1,2-Trichlorotrifluoroet	2.39	101	4366	2.298 ug/l	98
11) Tert butyl alcohol	3.03	59	1838	2.650 ug/l #	88
12) 1,1-Dichloroethene	2.37	96	2315	1.231 ug/l	94
13) Acrolein	2.30	56	135	0.274 ug/l #	1
16) Acetone	2.45	43	1554	1.073 ug/l	93
20) Methylene Chloride	2.85	84	521	Below Cal	90
24) 1,1-Dichloroethane	3.70	63	980	0.238 ug/l #	69
25) 2-Butanone	4.73	43	438	0.205 ug/l #	49
27) cis-1,2-Dichloroethene	4.60	96	2165	0.941 ug/l	86
29) Tetrahydrofuran	5.18	42	715	0.539 ug/l #	77
31) Cyclohexane	5.67	56	3447	1.092 ug/l #	1
36) 1,1-Dichloropropene	5.67	75	12586	3.938 ug/l #	46
39) Methylcyclohexane	7.21	83	1066	0.327 ug/l #	1
44) Trichloroethene	7.21	130	76843	31.243 ug/l	99
49) 1,4-Dioxane	7.76	88	417	6.040 ug/l #	38
56) Ethyl methacrylate	9.23	69	21	2.867 ug/l #	1
58) 2-Chloroethyl Vinyl ether	8.35	63	21	14.252 ug/l #	49
70) Styrene	10.71	104	77	2.150 ug/l #	50
74) N-amyl acetate	10.90	43	140	1.773 ug/l #	43
76) 1,2,3-Trichloropropane	11.14	75	72595	21.179 ug/l #	35
80) 1,3,5-Trimethylbenzene	11.51	105	125	Below Cal	65
81) trans-1,4-Dichloro-2-buten	11.14	75	72595	57.456 ug/l #	10
84) 1,2,4-Trimethylbenzene	11.80	105	235	Below Cal	82
95) Naphthalene	13.84	128	360	0.747 ug/l #	84

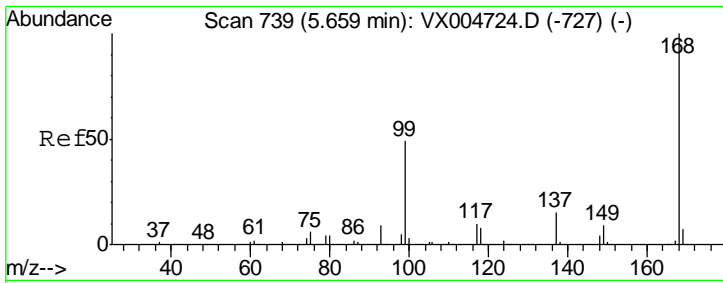
(#) = qualifier out of range (m) = manual integration (+) = signals summed

Data Path : Z:\VOASRV\HPCHEM1\MSVOA X\DATA\VX100918\  
 Data File : VX005166.D  
 Acq On : 09 Oct 2018 18:29  
 Operator : JC/MD  
 Sample : J5284-02DL 5X  
 Misc : 5.0mL/MSVOA X/WATER  
 ALS Vial : 12 Sample Multiplier: 1

Instrument :  
 MSVOA\_X  
 Client Sampled :  
 RE-125D2-2018001DL

Quant Time: Oct 10 05:54:03 2018  
 Quant Method : Z:\VOASRV\HPCHEM1\MSVOA\_X\METHOD\82X092618W.M  
 Quant Title : SW846 8260  
 QLast Update : Wed Oct 03 04:00:03 2018  
 Response via : Initial Calibration



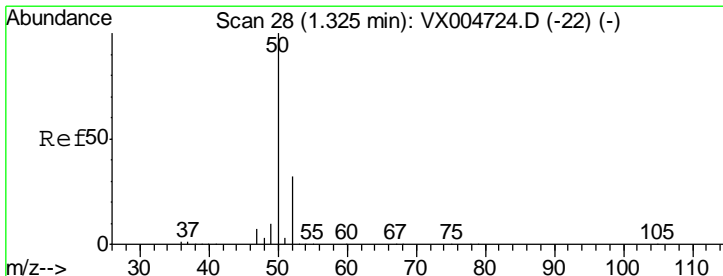
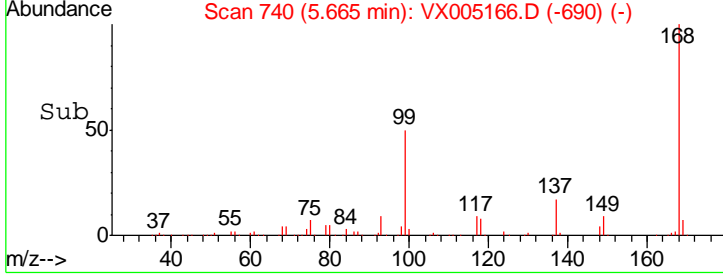
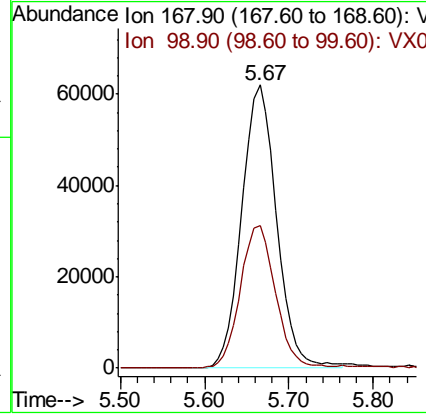
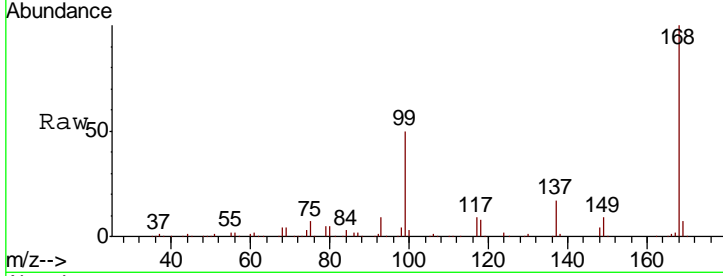


#1  
 Pentafluorobenzene  
 Concen: 50.000 ug/l  
 RT: 5.67 min Scan# 740  
 Delta R.T. 0.01 min  
 Lab File: VX005166.D  
 Acq: 09 Oct 2018 18:29

Instrument : MSVOA\_X  
 ClientSampleID : RE-125D2-2018001DL

Tgt Ion: 168 Resp: 173619

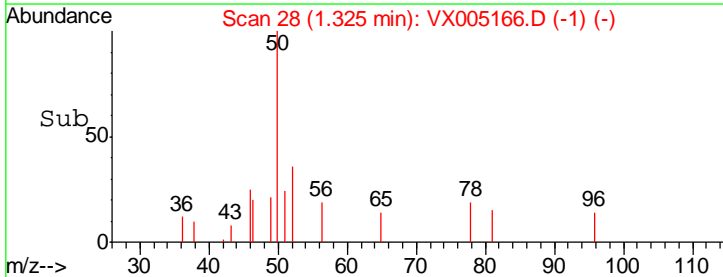
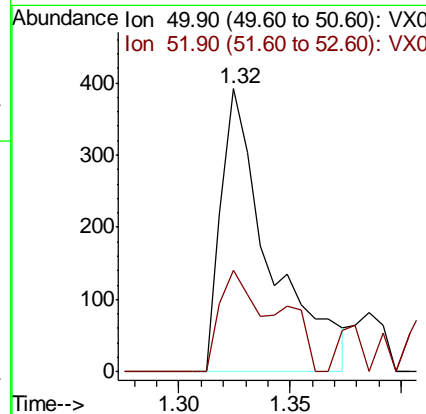
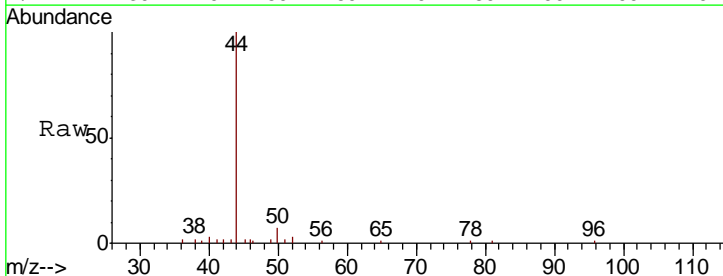
Ion	Ratio	Lower	Upper
168	100		
99	50.4	39.3	58.9

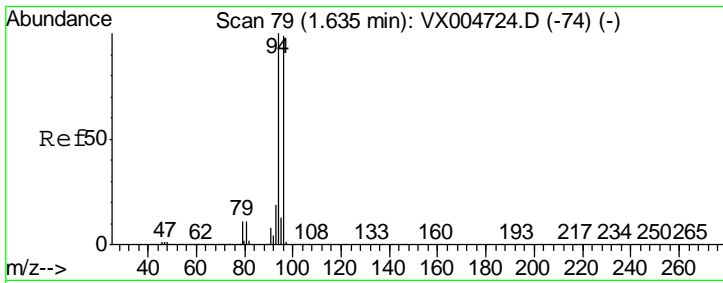


#3  
 Chloromethane  
 Concen: 0.209 ug/l  
 RT: 1.32 min Scan# 28  
 Delta R.T. 0.00 min  
 Lab File: VX005166.D  
 Acq: 09 Oct 2018 18:29

Tgt Ion: 50 Resp: 601

Ion	Ratio	Lower	Upper
50	100		
52	35.7	25.8	38.6

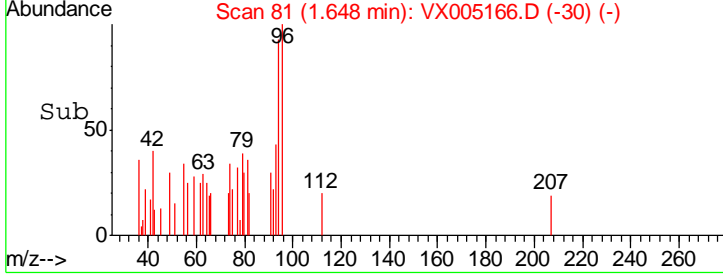
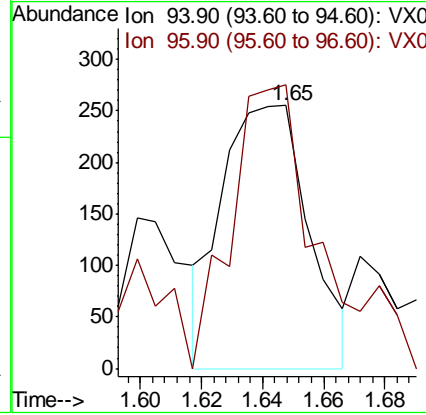
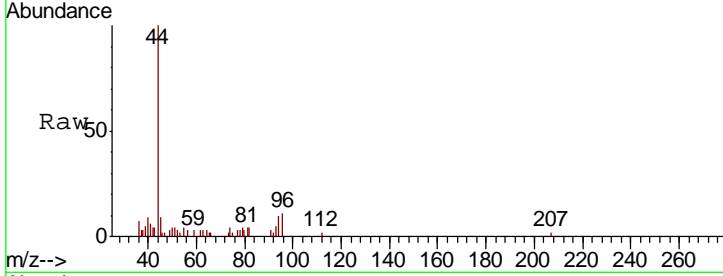




#5  
 Bromomethane  
 Concen: 0.314 ug/l  
 RT: 1.65 min Scan# 81  
 Delta R.T. 0.01 min  
 Lab File: VX005166.D  
 Acq: 09 Oct 2018 18:29

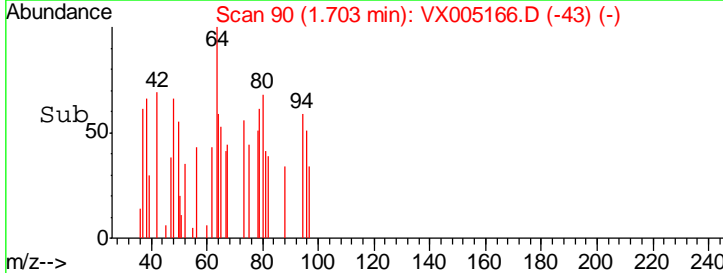
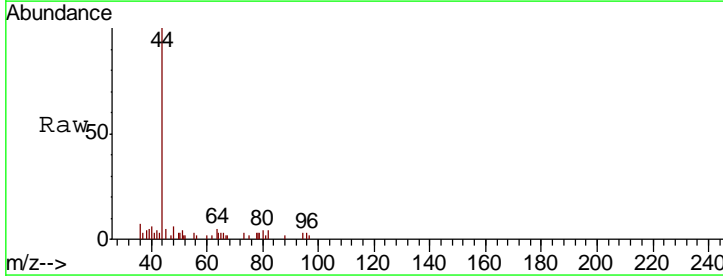
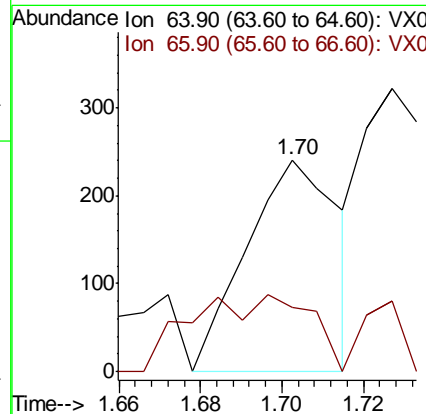
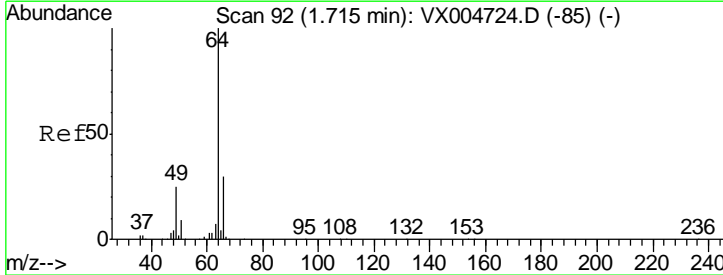
Instrument : MSVOA\_X  
 ClientSampled : RE-125D2-2018001DL

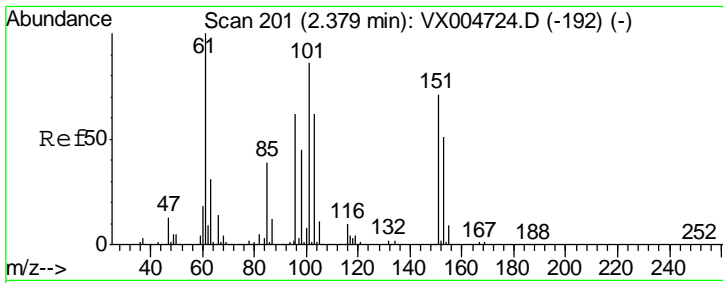
Tgt Ion	Resp	Lower	Upper
94	100		
96	139.6	79.5	119.3#



#6  
 Chloroethane  
 Concen: Below Cal  
 RT: 1.70 min Scan# 90  
 Delta R.T. -0.01 min  
 Lab File: VX005166.D  
 Acq: 09 Oct 2018 18:29

Tgt Ion	Resp	Lower	Upper
64	100		
66	30.3	23.8	35.6

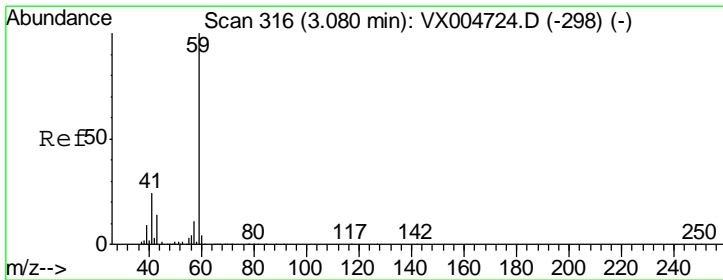
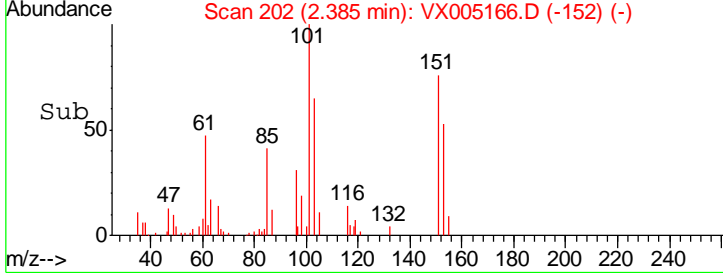
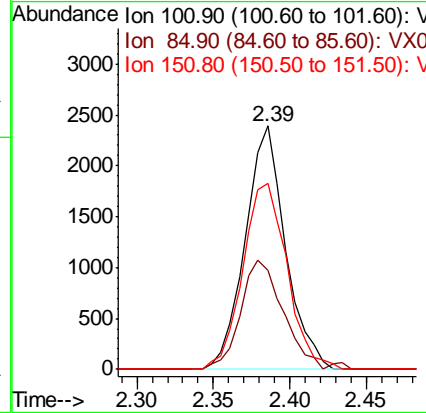
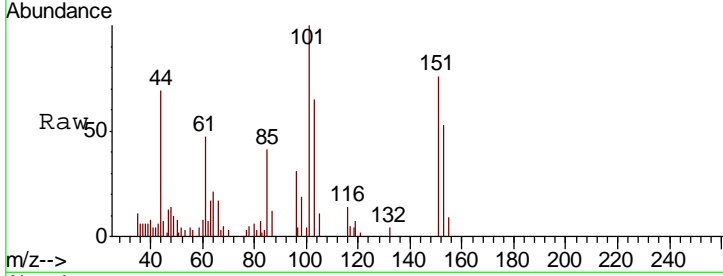




#9  
 1,1,2-Trichlorotrifluoroethane  
 Concen: 2.298 ug/l  
 RT: 2.39 min Scan# 202  
 Delta R.T. 0.01 min  
 Lab File: VX005166.D  
 Acq: 09 Oct 2018 18:29

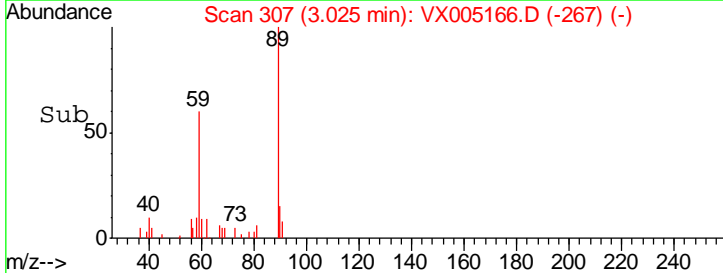
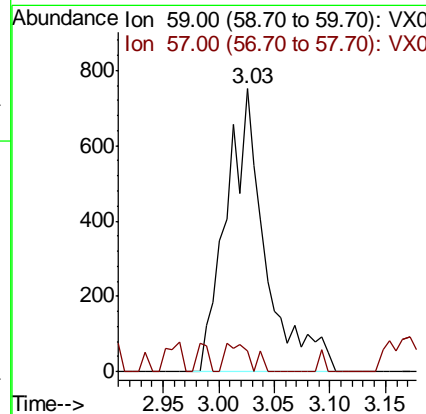
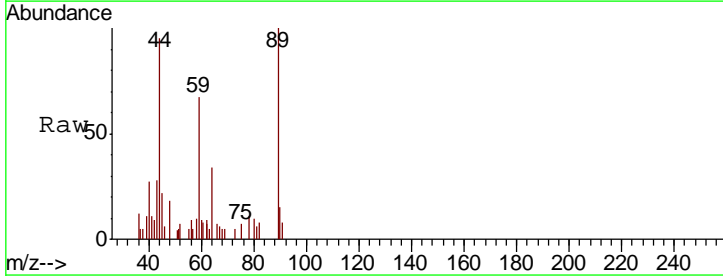
**Instrument :**  
 MSVOA\_X  
**ClientSampled :**  
 RE-125D2-2018001DL

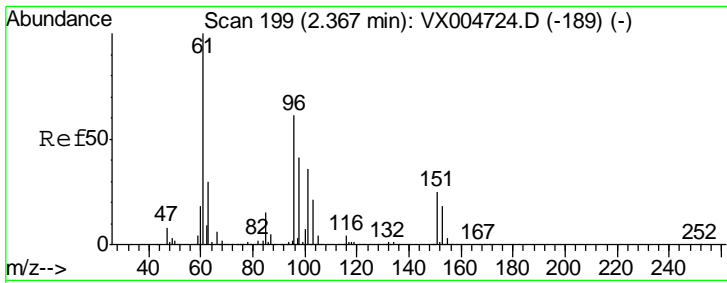
Tgt Ion	Resp	Lower	Upper
101	4366		
85	48.1	35.9	53.9
151	84.1	66.6	100.0



#11  
 Tert butyl alcohol  
 Concen: 2.650 ug/l  
 RT: 3.03 min Scan# 307  
 Delta R.T. -0.05 min  
 Lab File: VX005166.D  
 Acq: 09 Oct 2018 18:29

Tgt Ion	Resp	Lower	Upper
59	1838		
57	6.4	8.6	12.8#

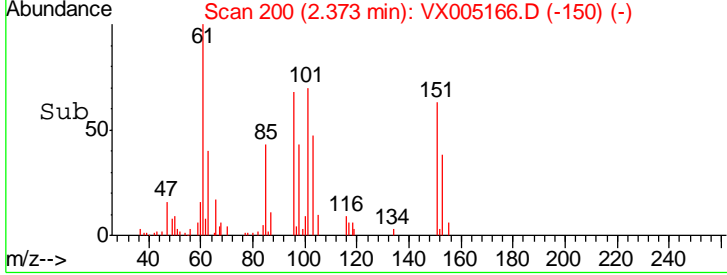
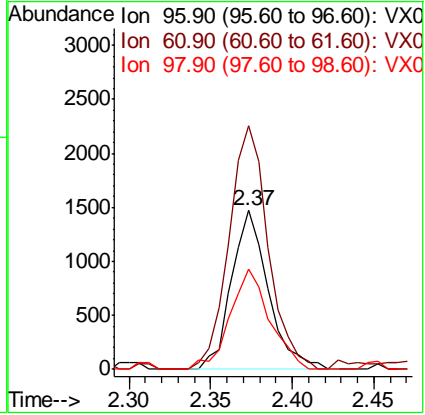
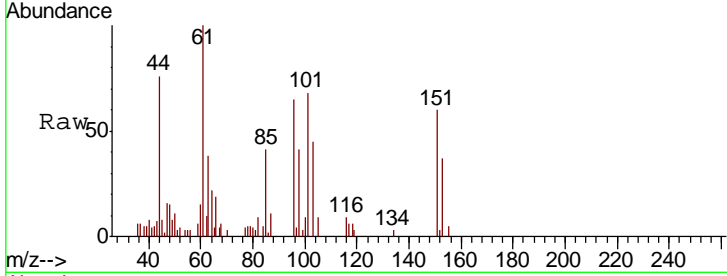




#12  
 1,1-Dichloroethene  
 Concen: 1.231 ug/l  
 RT: 2.37 min Scan# 200  
 Delta R.T. 0.01 min  
 Lab File: VX005166.D  
 Acq: 09 Oct 2018 18:29

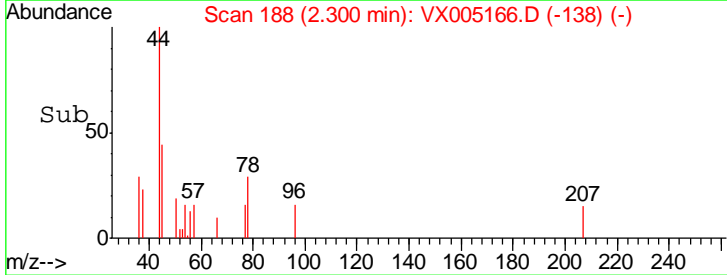
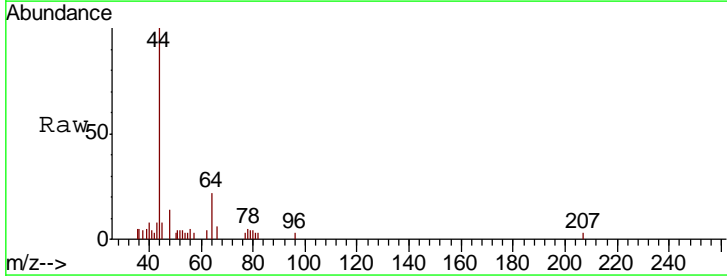
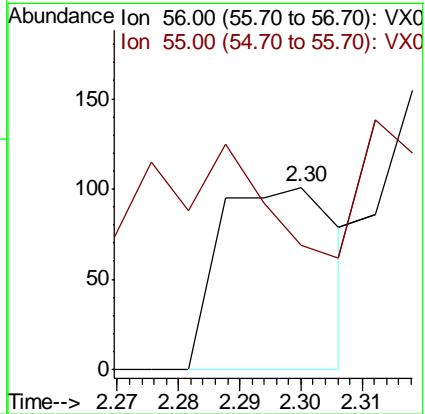
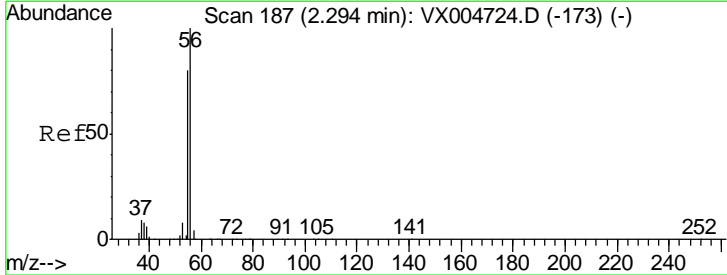
Instrument : MSVOA\_X  
 ClientSampleID : RE-125D2-2018001DL

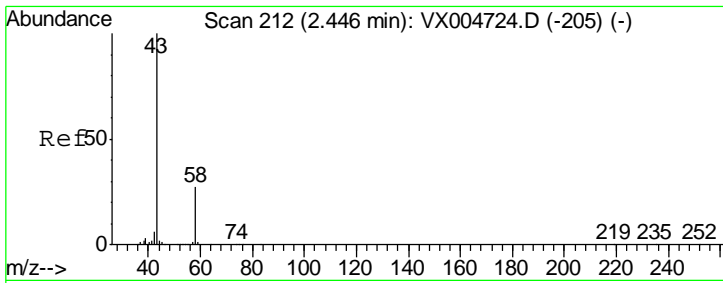
Tgt Ion	Resp	Lower	Upper
96	2315		
61	153.3	130.2	195.4
98	63.4	53.4	80.0



#13  
 Acrolein  
 Concen: 0.274 ug/l  
 RT: 2.30 min Scan# 188  
 Delta R.T. 0.01 min  
 Lab File: VX005166.D  
 Acq: 09 Oct 2018 18:29

Tgt Ion	Resp	Lower	Upper
56	135		
55	168.9	63.4	95.2#

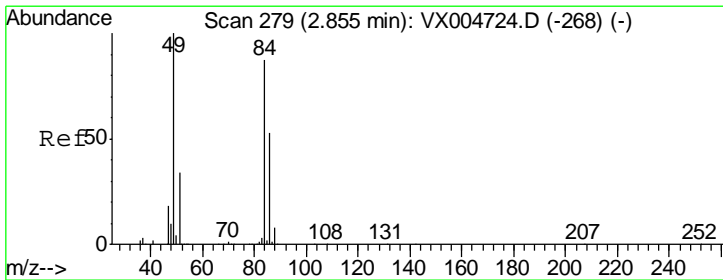
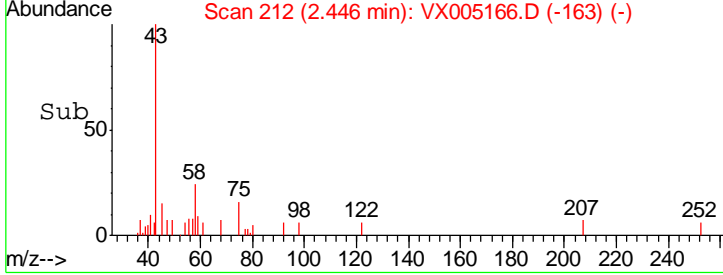
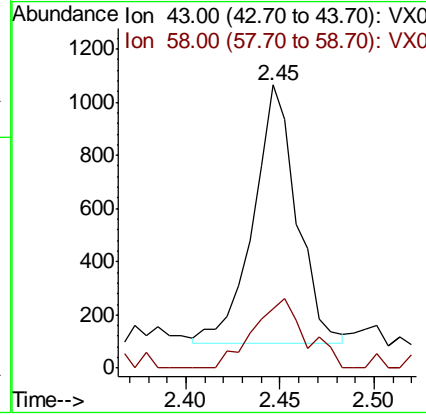
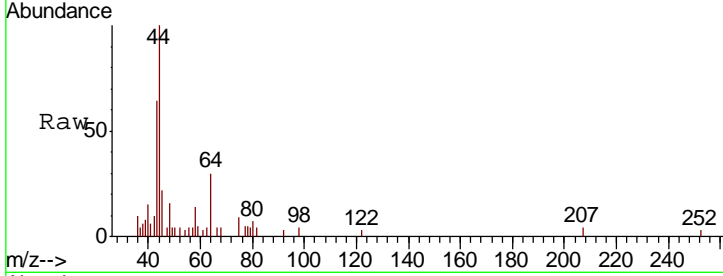




#16  
 Acetone  
 Concen: 1.073 ug/l  
 RT: 2.45 min Scan# 212  
 Delta R.T. 0.00 min  
 Lab File: VX005166.D  
 Acq: 09 Oct 2018 18:29

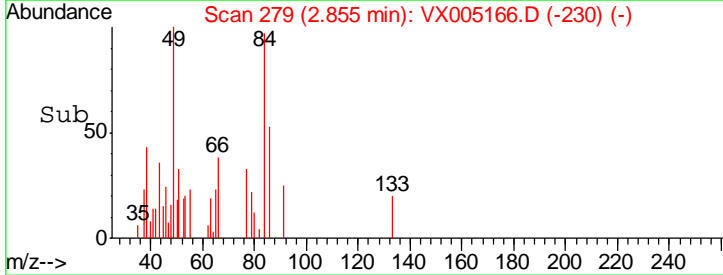
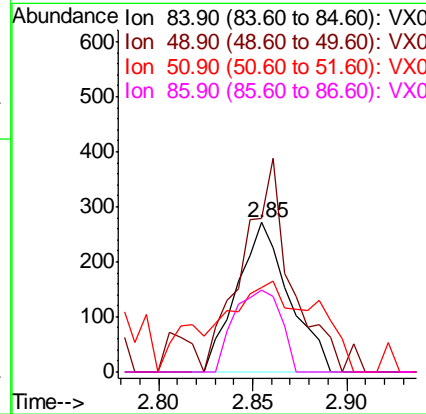
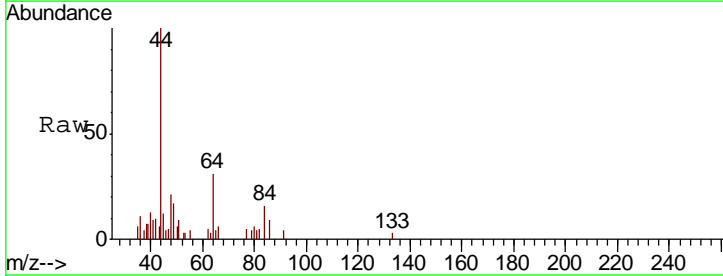
**Instrument :**  
 MSVOA\_X  
**ClientSampled :**  
 RE-125D2-2018001DL

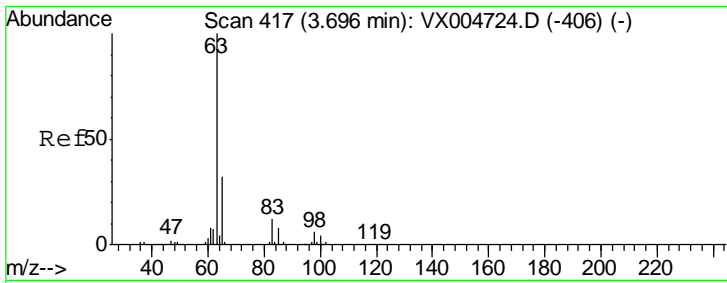
Tgt Ion	Resp	Lower	Upper
43	1554		
43	100		
58	23.6	21.8	32.6



#20  
 Methylene Chloride  
 Concen: Below Cal  
 RT: 2.85 min Scan# 279  
 Delta R.T. 0.00 min  
 Lab File: VX005166.D  
 Acq: 09 Oct 2018 18:29

Tgt Ion	Resp	Lower	Upper
84	521		
84	100		
49	103.3	92.3	138.5
51	34.3	31.8	47.6
86	55.0	48.5	72.7

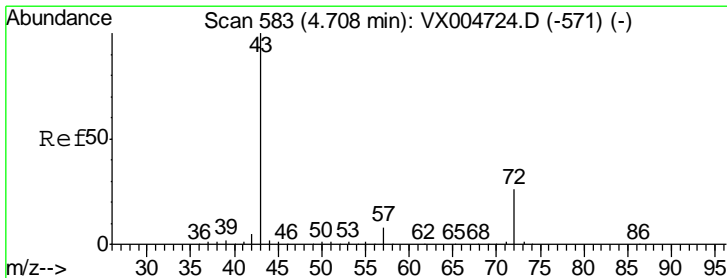
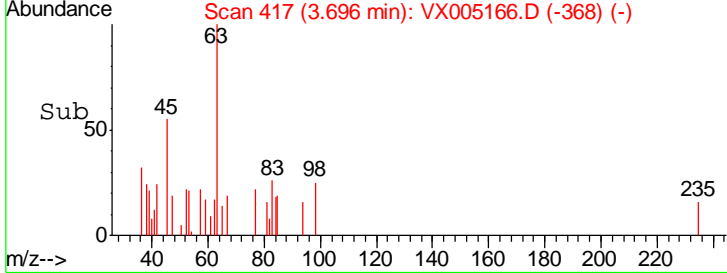
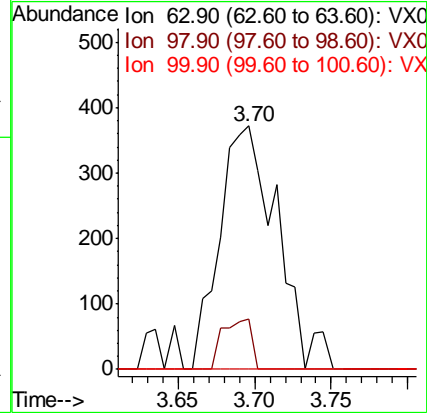
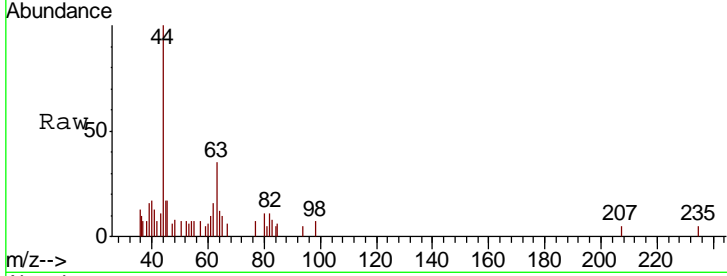




#24  
 1,1-Dichloroethane  
 Concen: 0.238 ug/l  
 RT: 3.70 min Scan# 417  
 Delta R.T. 0.00 min  
 Lab File: VX005166.D  
 Acq: 09 Oct 2018 18:29

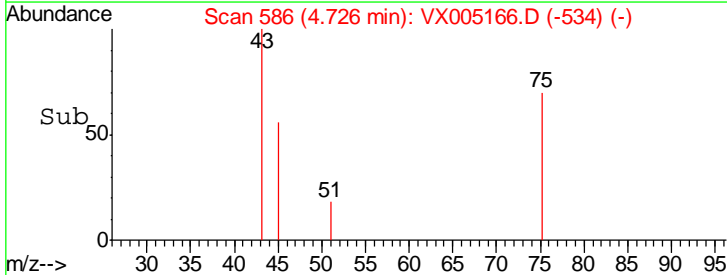
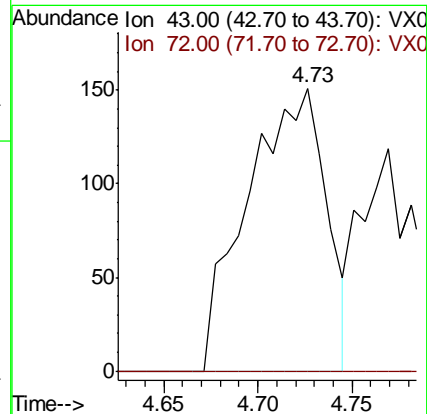
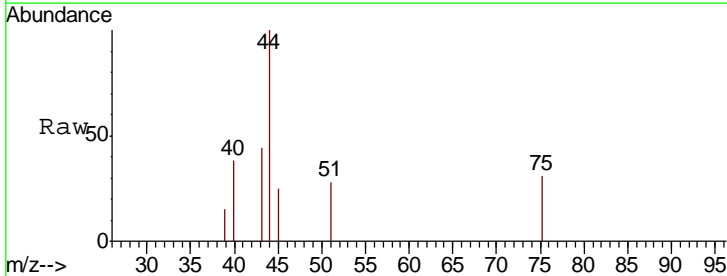
**Instrument :**  
 MSVOA\_X  
**ClientSampled :**  
 RE-125D2-2018001DL

Tgt Ion	Resp	Lower	Upper
63	100		
98	21.0	3.0	9.2#
100	0.0	2.0	5.8#

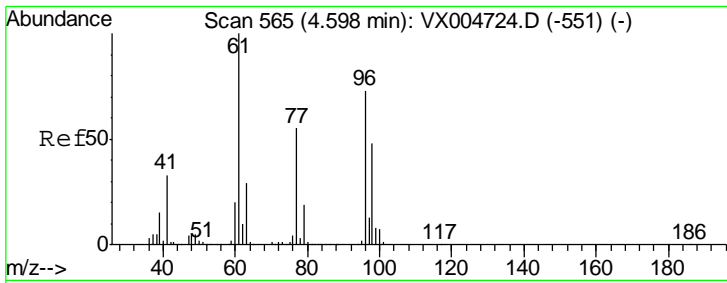


#25  
 2-Butanone  
 Concen: 0.205 ug/l  
 RT: 4.73 min Scan# 586  
 Delta R.T. 0.02 min  
 Lab File: VX005166.D  
 Acq: 09 Oct 2018 18:29

Tgt Ion	Resp	Lower	Upper
43	100		
72	0.0	20.8	31.2#



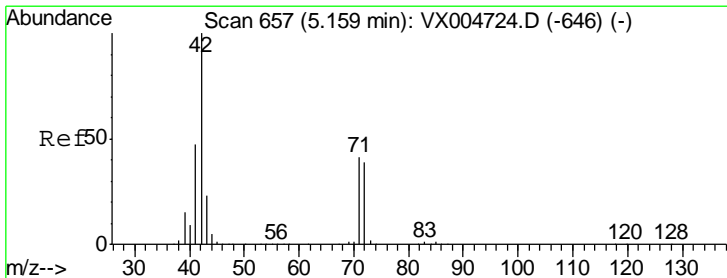
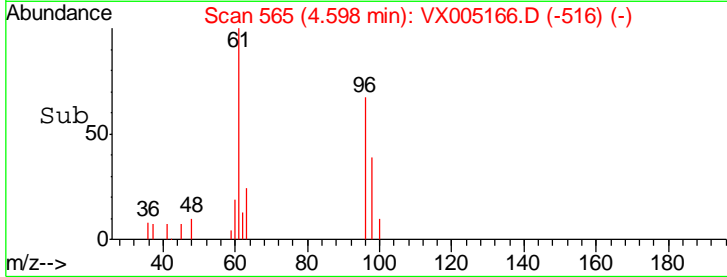
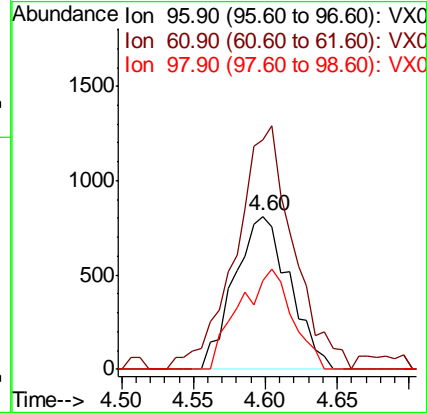
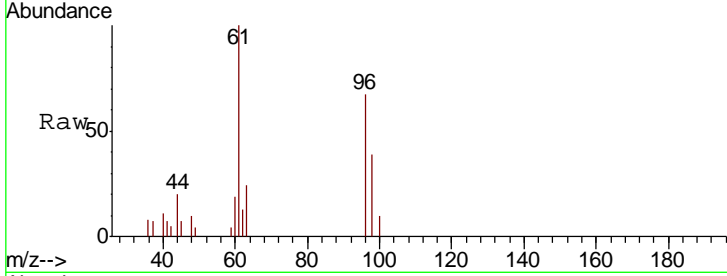




#27  
 cis-1,2-Dichloroethene  
 Concen: 0.941 ug/l  
 RT: 4.60 min Scan# 565  
 Delta R.T. 0.00 min  
 Lab File: VX005166.D  
 Acq: 09 Oct 2018 18:29

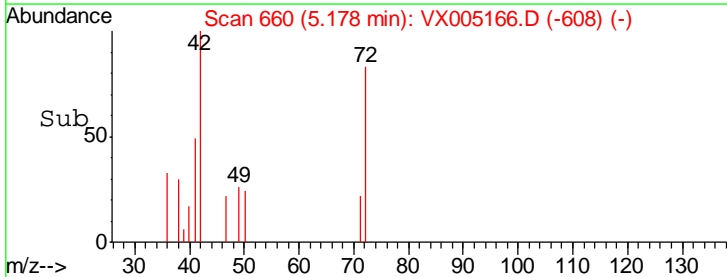
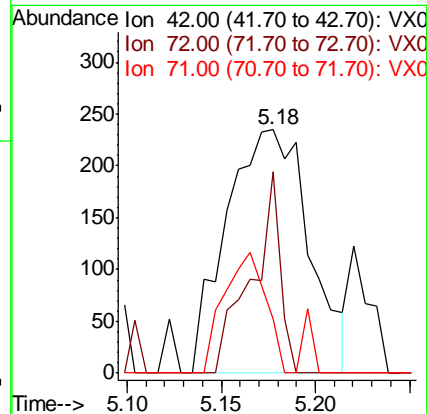
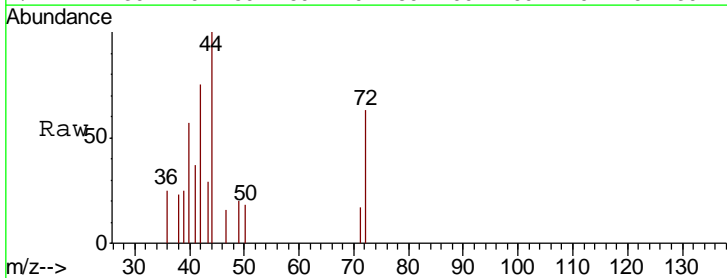
Instrument :  
 MSVOA\_X  
 ClientSampleId :  
 RE-125D2-2018001DL

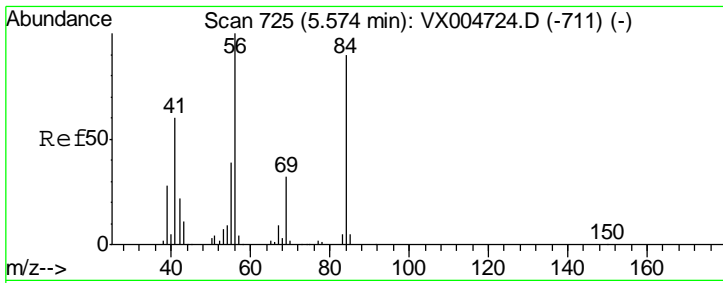
Tgt Ion	Resp	Lower	Upper
96	2165		
61	100	0.0	285.8
98	63.1	0.0	136.2



#29  
 Tetrahydrofuran  
 Concen: 0.539 ug/l  
 RT: 5.18 min Scan# 660  
 Delta R.T. 0.02 min  
 Lab File: VX005166.D  
 Acq: 09 Oct 2018 18:29

Tgt Ion	Resp	Lower	Upper
42	715		
72	100	33.7	50.5#
71	28.5	32.2	48.4#

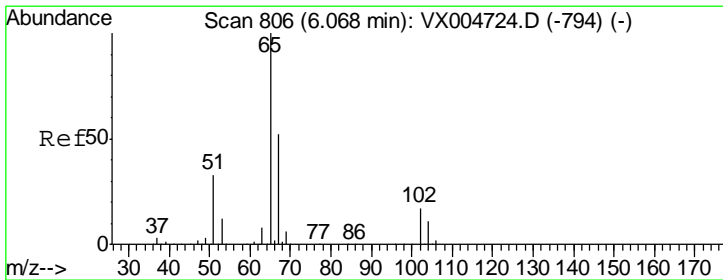
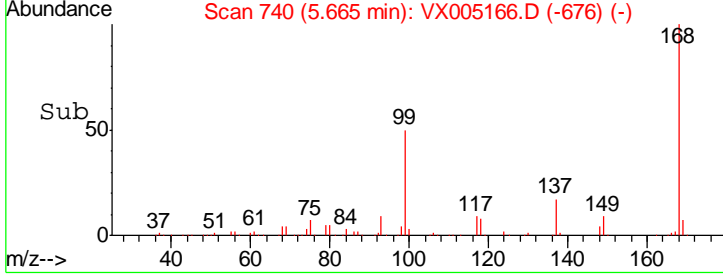
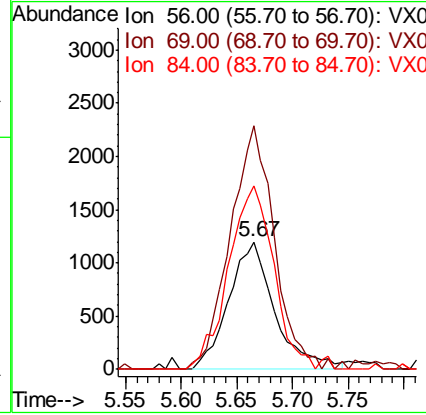
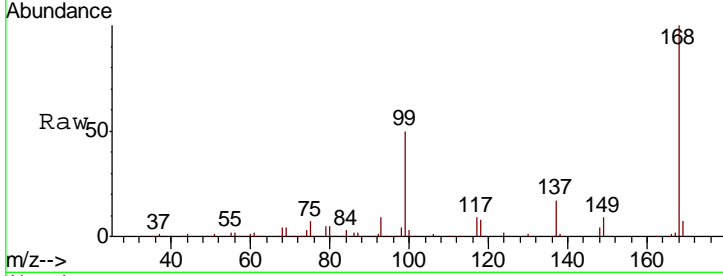




#31  
 Cyclohexane  
 Concen: 1.092 ug/l  
 RT: 5.67 min Scan# 740  
 Delta R.T. 0.09 min  
 Lab File: VX005166.D  
 Acq: 09 Oct 2018 18:29

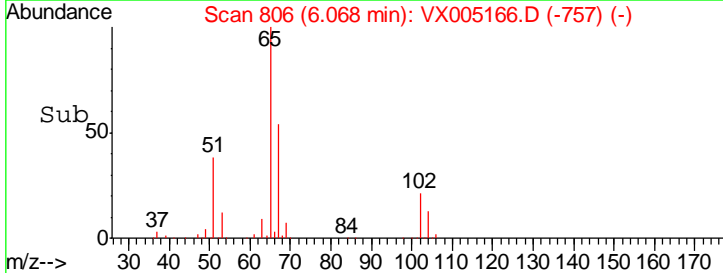
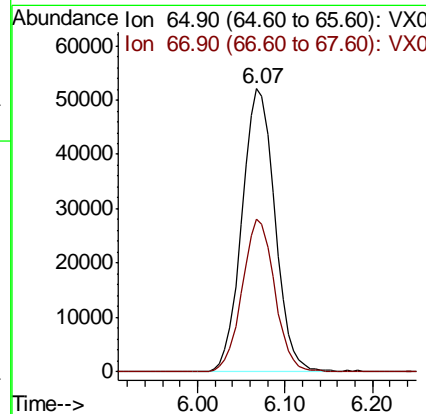
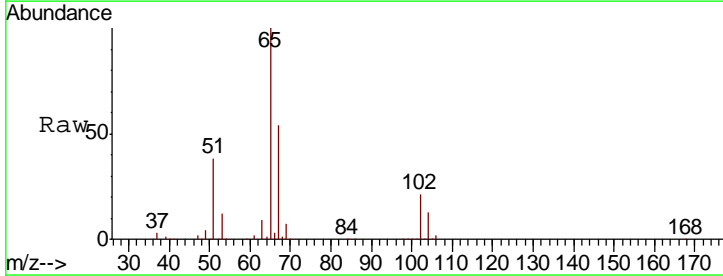
Instrument : MSVOA\_X  
 ClientSampleID : RE-125D2-2018001DL

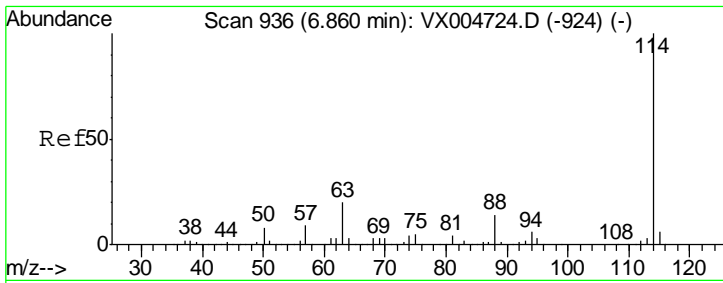
Tgt Ion	Resp	Lower	Upper
56	100		
69	185.5	25.9	38.9#
84	143.9	71.9	107.9#



#33  
 1,2-Dichloroethane-d4  
 Concen: 55.053 ug/l  
 RT: 6.07 min Scan# 806  
 Delta R.T. 0.00 min  
 Lab File: VX005166.D  
 Acq: 09 Oct 2018 18:29

Tgt Ion	Resp	Lower	Upper
65	100		
67	53.1	0.0	107.4

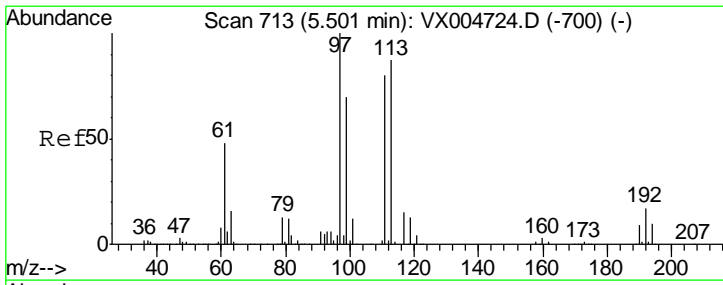
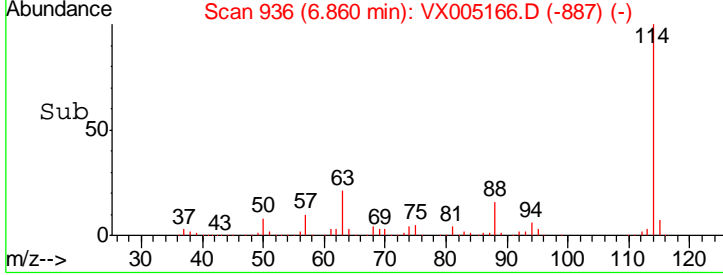
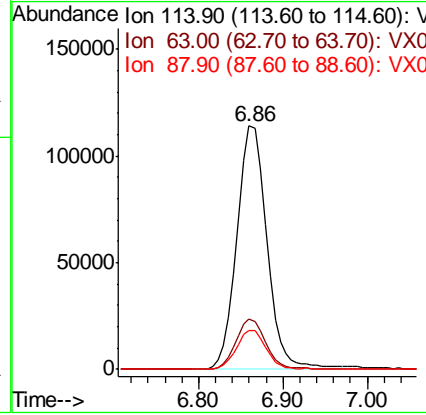
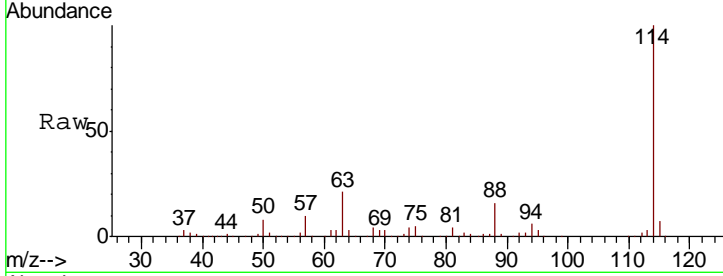




#34  
 1,4-Difluorobenzene  
 Concen: 50.000 ug/l  
 RT: 6.86 min Scan# 936  
 Delta R.T. 0.00 min  
 Lab File: VX005166.D  
 Acq: 09 Oct 2018 18:29

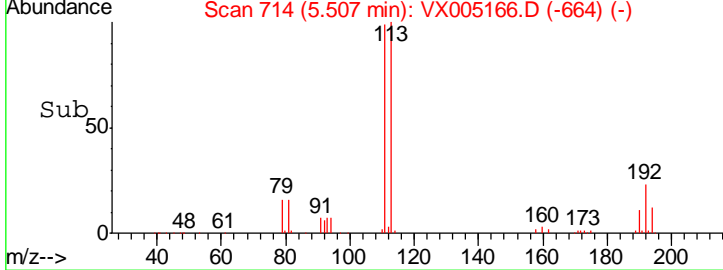
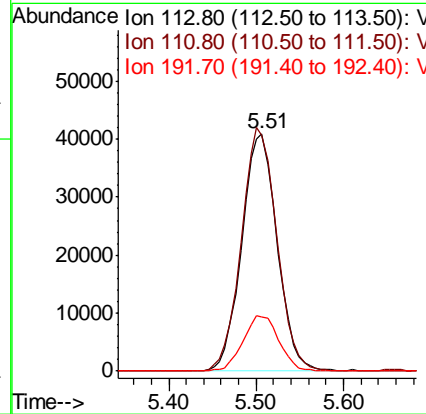
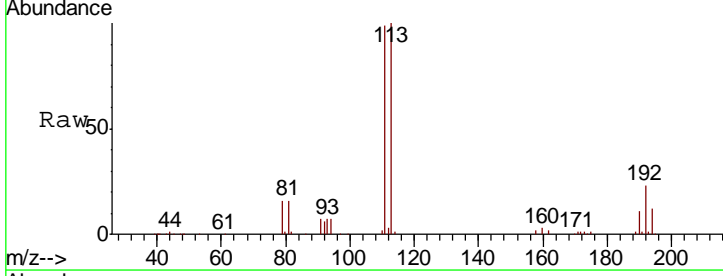
Instrument :  
 MSVOA\_X  
 ClientSampleId :  
 RE-125D2-2018001DL

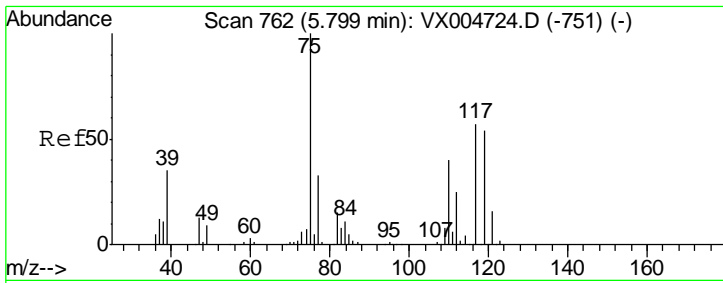
Tgt Ion	Resp	Lower	Upper
114	276377		
63	20.7	0.0	39.8
88	15.8	0.0	27.0



#35  
 Dibromofluoromethane  
 Concen: 49.149 ug/l  
 RT: 5.51 min Scan# 714  
 Delta R.T. 0.01 min  
 Lab File: VX005166.D  
 Acq: 09 Oct 2018 18:29

Tgt Ion	Resp	Lower	Upper
113	115124		
111	102.8	77.0	115.4
192	23.8	17.0	25.6

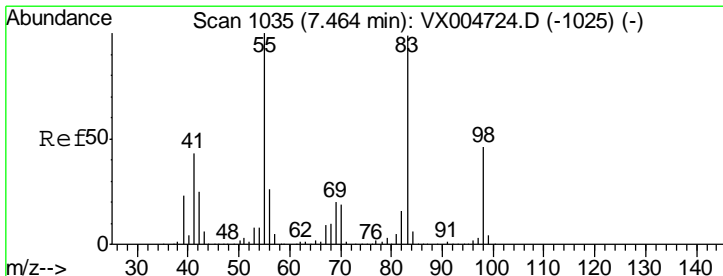
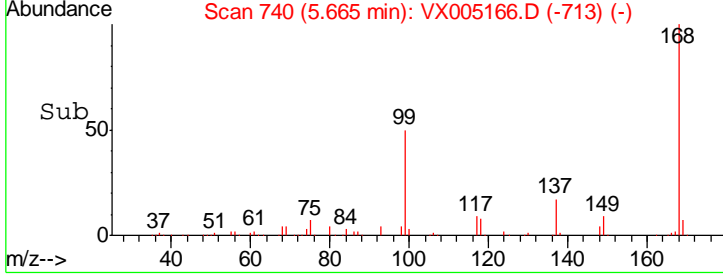
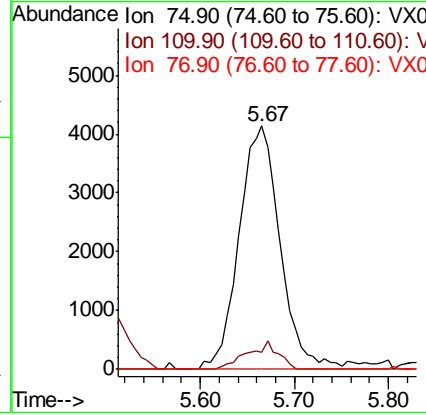
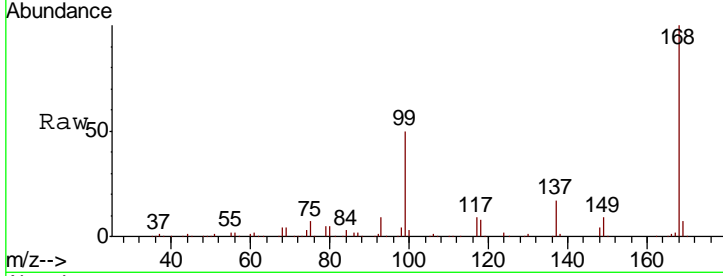




#36  
 1,1-Dichloropropene  
 Concen: 3.938 ug/l  
 RT: 5.67 min Scan# 740  
 Delta R.T. -0.13 min  
 Lab File: VX005166.D  
 Acq: 09 Oct 2018 18:29

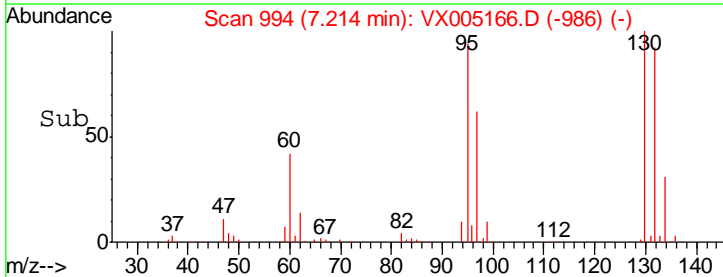
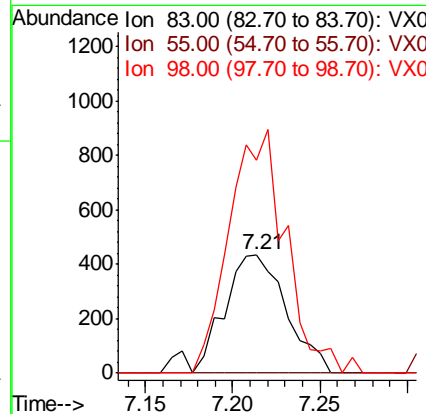
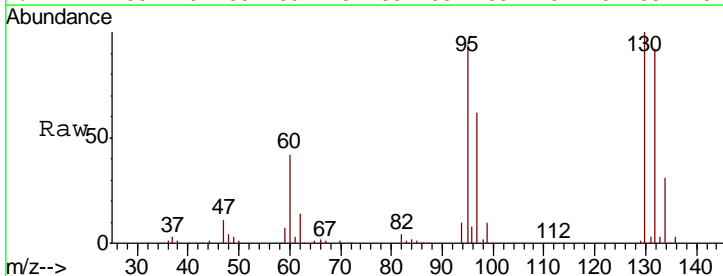
**Instrument :**  
 MSVOA\_X  
**ClientSampleID :**  
 RE-125D2-2018001DL

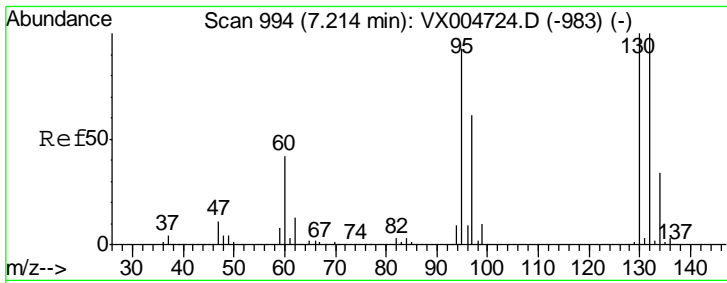
Tgt Ion	Resp	Lower	Upper
75	12586		
110	8.8	20.0	59.9#
77	0.0	27.1	40.7#



#39  
 Methylcyclohexane  
 Concen: 0.327 ug/l  
 RT: 7.21 min Scan# 994  
 Delta R.T. -0.25 min  
 Lab File: VX005166.D  
 Acq: 09 Oct 2018 18:29

Tgt Ion	Resp	Lower	Upper
83	1066		
55	0.0	81.1	121.7#
98	179.6	37.3	55.9#



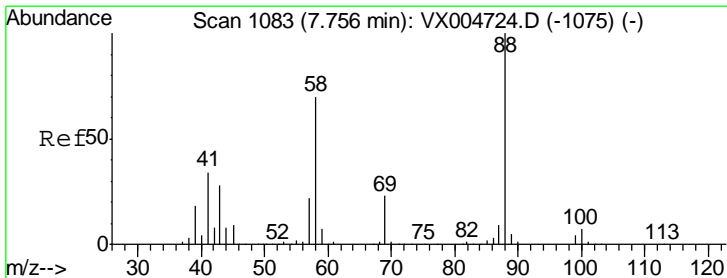
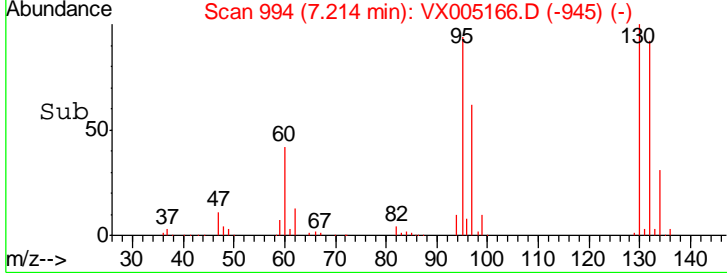
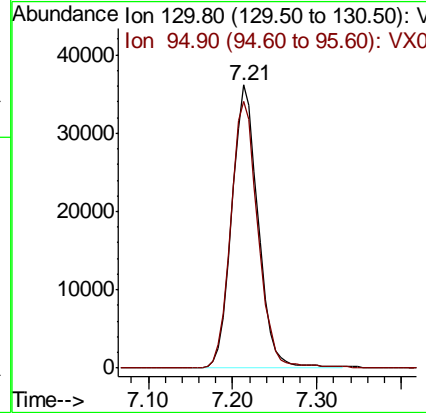
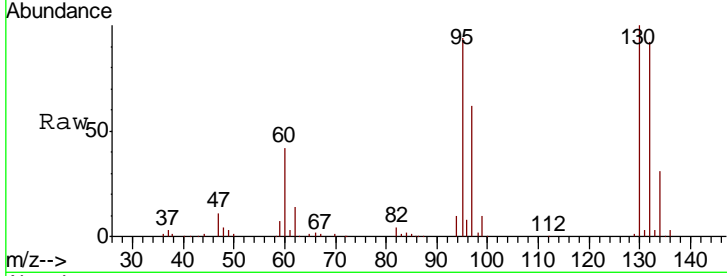


#44  
 Trichloroethene  
 Concen: 31.243 ug/l  
 RT: 7.21 min Scan# 994  
 Delta R.T. 0.00 min  
 Lab File: VX005166.D  
 Acq: 09 Oct 2018 18:29

Instrument : MSVOA\_X  
 ClientSampleID : RE-125D2-2018001DL

Tgt Ion: 130 Resp: 76843

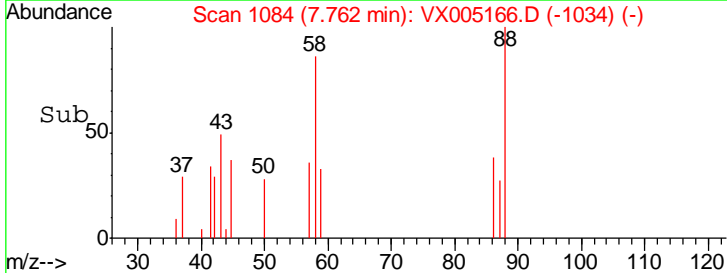
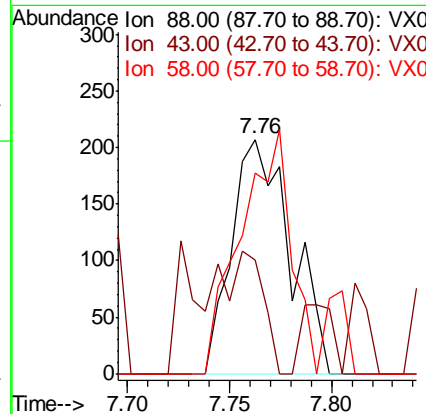
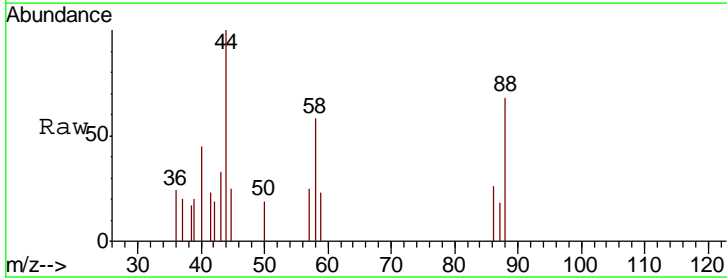
Ion	Ratio	Lower	Upper
130	100		
95	94.1	0.0	186.8

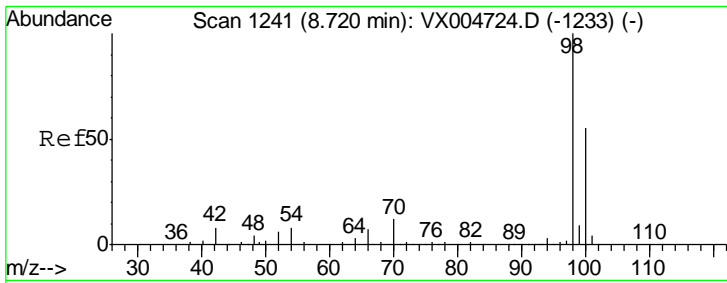


#49  
 1,4-Dioxane  
 Concen: 6.040 ug/l  
 RT: 7.76 min Scan# 1084  
 Delta R.T. 0.01 min  
 Lab File: VX005166.D  
 Acq: 09 Oct 2018 18:29

Tgt Ion: 88 Resp: 417

Ion	Ratio	Lower	Upper
88	100		
43	37.2	25.1	37.7
58	0.0	56.2	84.2#

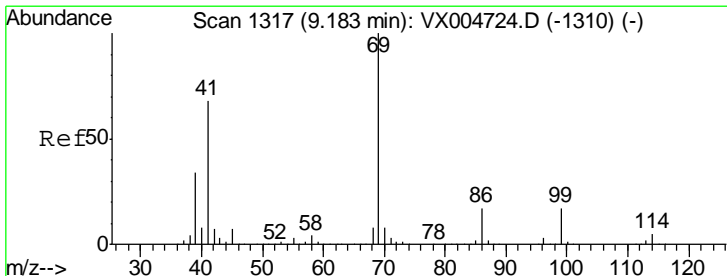
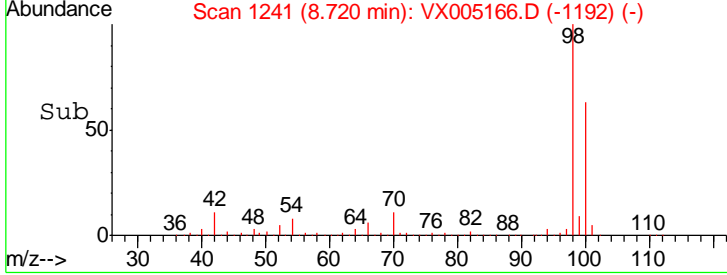
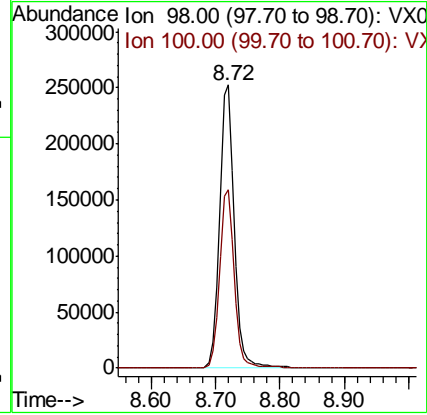
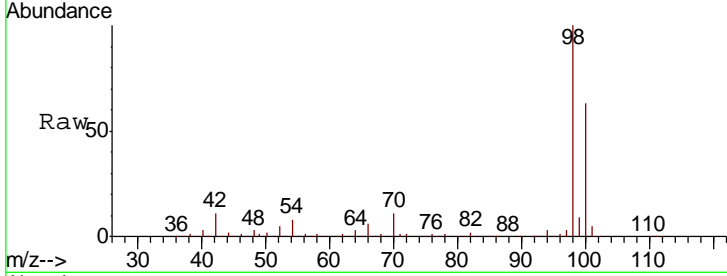




#50  
 Toluene-d8  
 Concen: 52.342 ug/l  
 RT: 8.72 min Scan# 1241  
 Delta R.T. 0.00 min  
 Lab File: VX005166.D  
 Acq: 09 Oct 2018 18:29

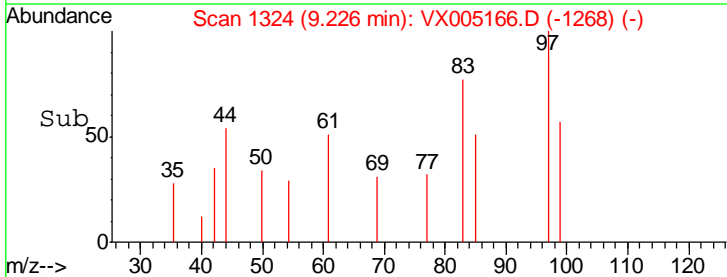
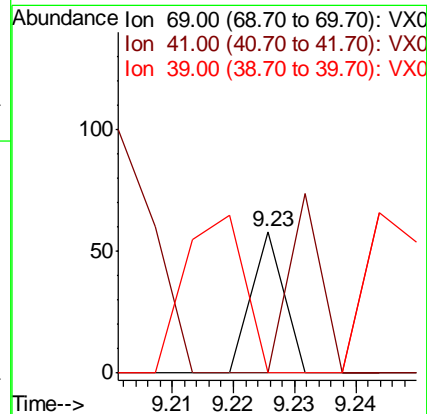
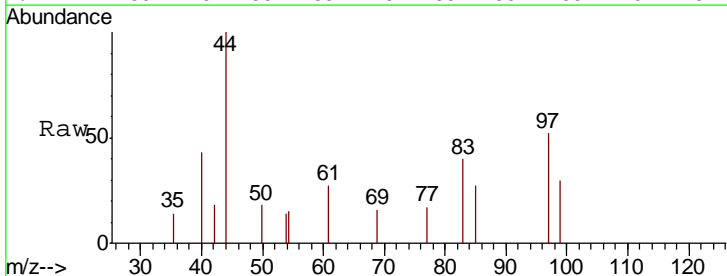
**Instrument :**  
 MSVOA\_X  
**ClientSampled :**  
 RE-125D2-2018001DL

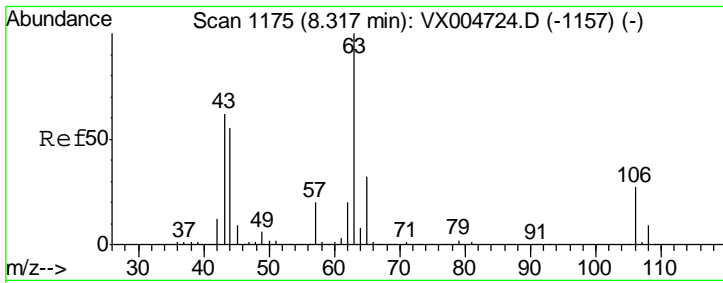
Tgt Ion	Resp	Lower	Upper
98	407593		
100	100		
100	62.9	51.9	77.9



#56  
 Ethyl methacrylate  
 Concen: 2.867 ug/l  
 RT: 9.23 min Scan# 1324  
 Delta R.T. 0.04 min  
 Lab File: VX005166.D  
 Acq: 09 Oct 2018 18:29

Tgt Ion	Resp	Lower	Upper
69	21		
41	128.6	56.9	85.3#
39	209.5	28.4	42.6#

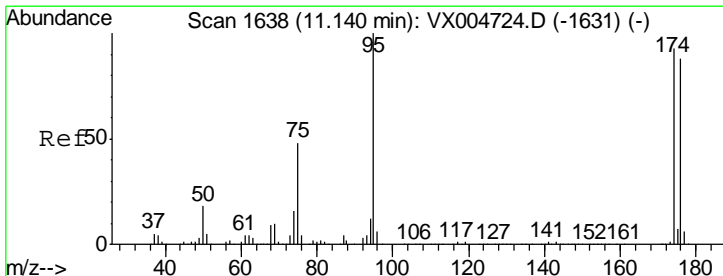
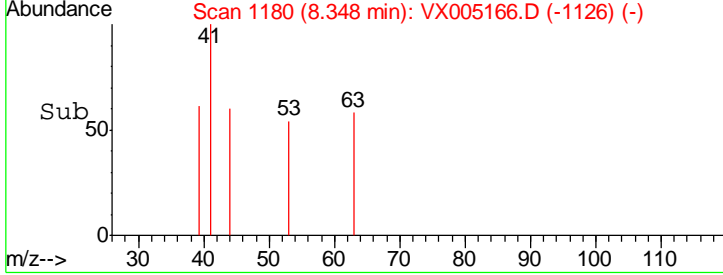
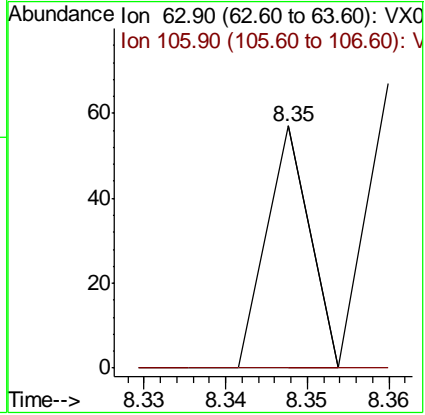
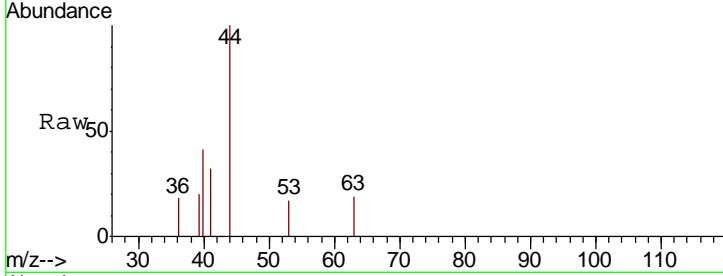




#58  
 2-Chloroethyl Vinyl ether  
 Concen: 14.252 ug/l  
 RT: 8.35 min Scan# 1180  
 Delta R.T. 0.03 min  
 Lab File: VX005166.D  
 Acq: 09 Oct 2018 18:29

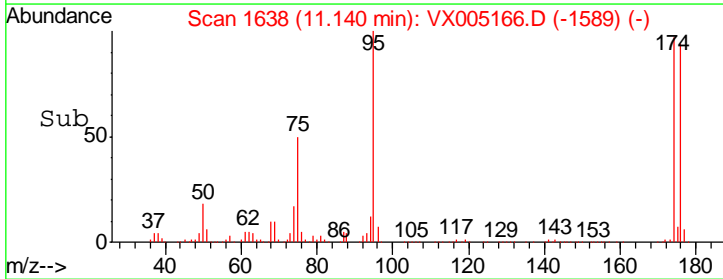
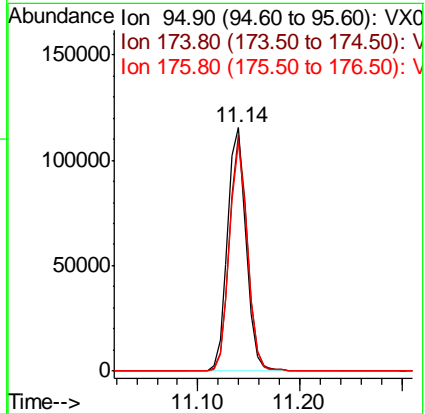
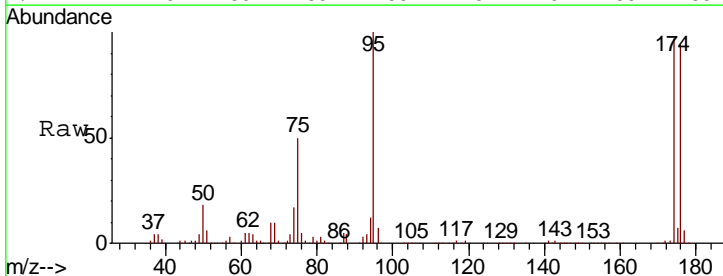
Instrument : MSVOA\_X  
 ClientSampleID : RE-125D2-2018001DL

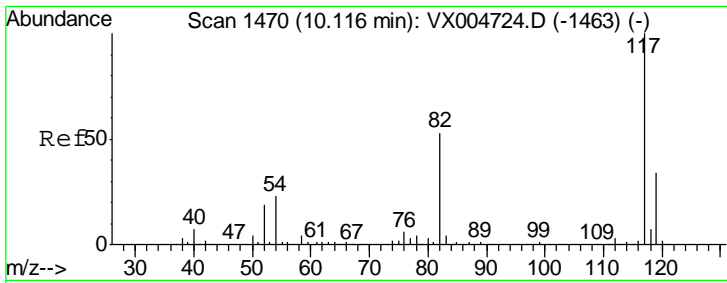
Tgt Ion	Resp	Lower	Upper
63	100		
106	0.0	21.0	31.6#



#62  
 4-Bromofluorobenzene  
 Concen: 51.777 ug/l  
 RT: 11.14 min Scan# 1638  
 Delta R.T. 0.00 min  
 Lab File: VX005166.D  
 Acq: 09 Oct 2018 18:29

Tgt Ion	Resp	Lower	Upper
95	100		
174	93.6	0.0	185.0
176	90.5	0.0	180.2

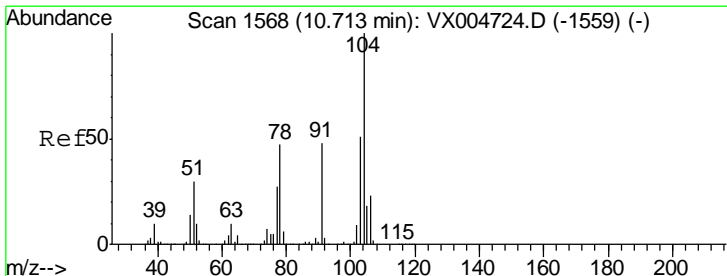
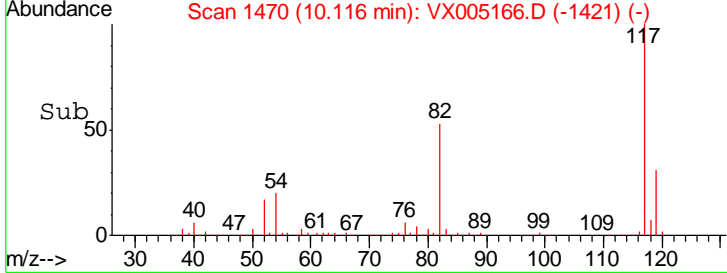
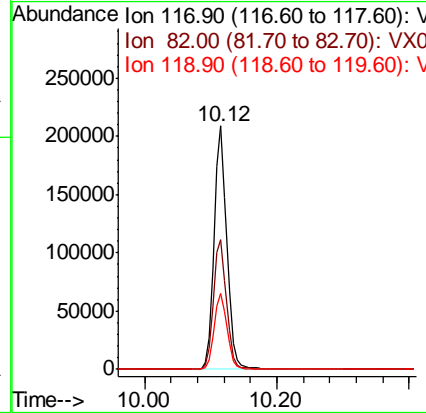
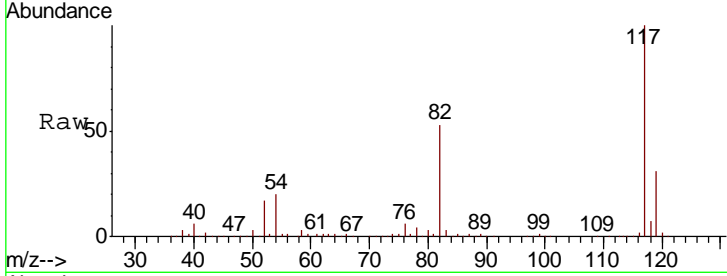




#63  
 Chlorobenzene-d5  
 Concen: 50.000 ug/l  
 RT: 10.12 min Scan# 1470  
 Delta R.T. 0.00 min  
 Lab File: VX005166.D  
 Acq: 09 Oct 2018 18:29

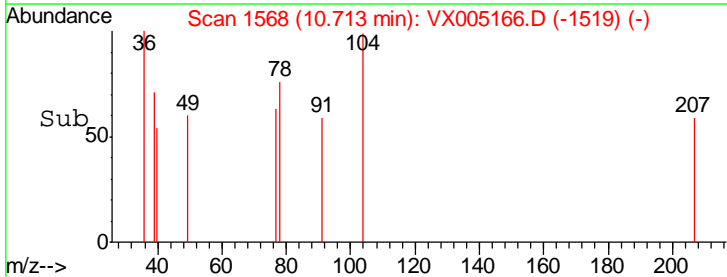
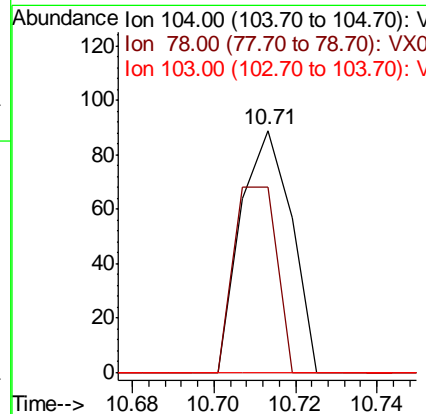
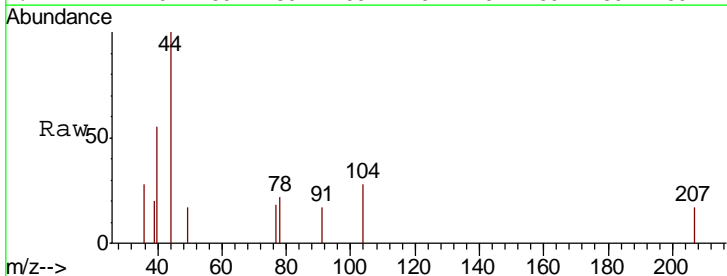
Instrument :  
 MSVOA\_X  
 ClientSampled :  
 RE-125D2-2018001DL

Tgt Ion	Resp	Lower	Upper
117	100		
82	53.3	42.2	63.4
119	31.1	27.4	41.0

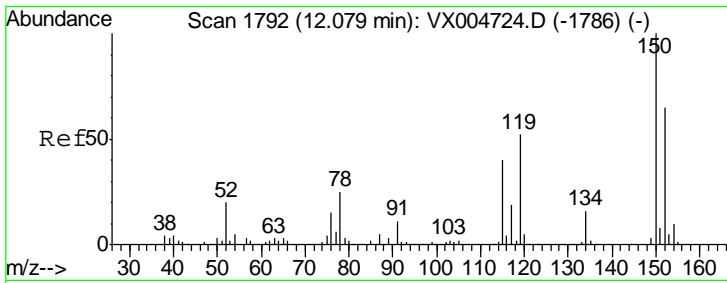


#70  
 Styrene  
 Concen: 2.150 ug/l  
 RT: 10.71 min Scan# 1568  
 Delta R.T. 0.00 min  
 Lab File: VX005166.D  
 Acq: 09 Oct 2018 18:29

Tgt Ion	Resp	Lower	Upper
104	100		
78	64.9	40.0	60.0#
103	0.0	44.3	66.5#



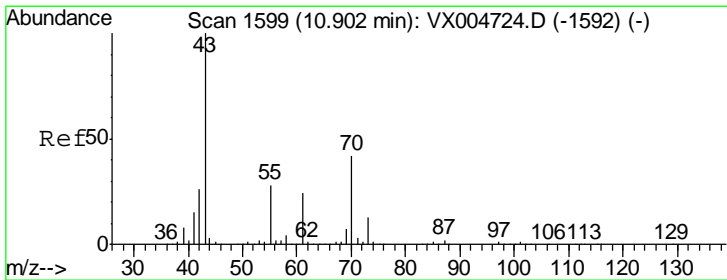
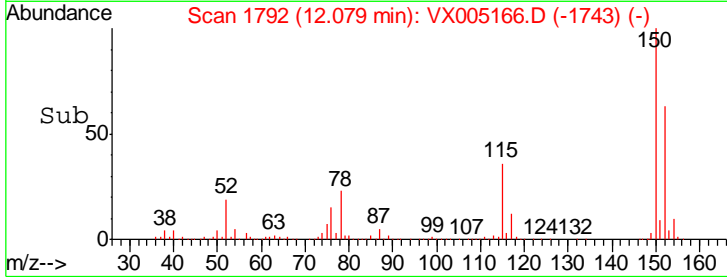
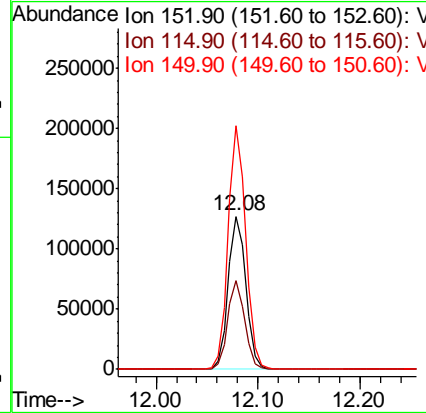
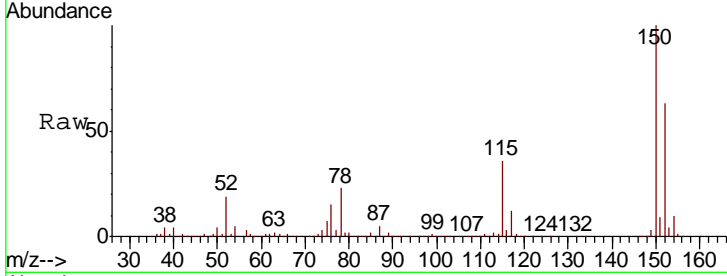




#72  
 1,4-Dichlorobenzene-d4  
 Concen: 50.000 ug/l  
 RT: 12.08 min Scan# 1792  
 Delta R.T. 0.00 min  
 Lab File: VX005166.D  
 Acq: 09 Oct 2018 18:29

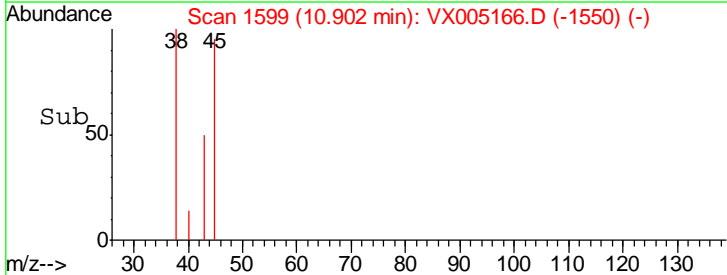
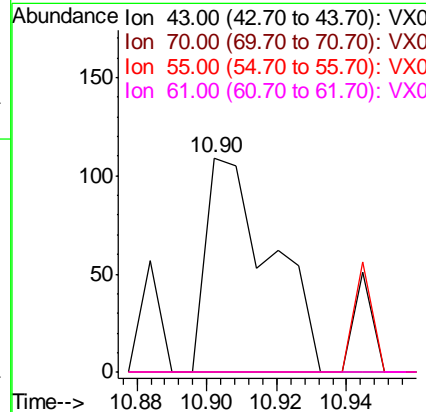
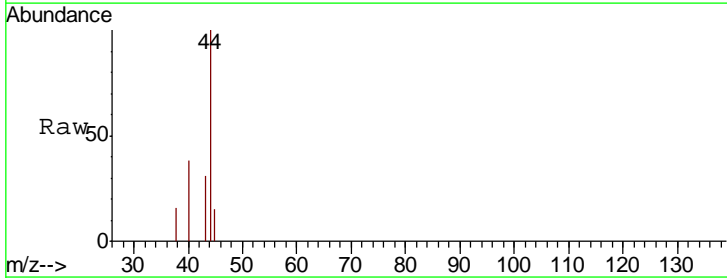
Instrument :  
 MSVOA\_X  
 ClientSampled :  
 RE-125D2-2018001DL

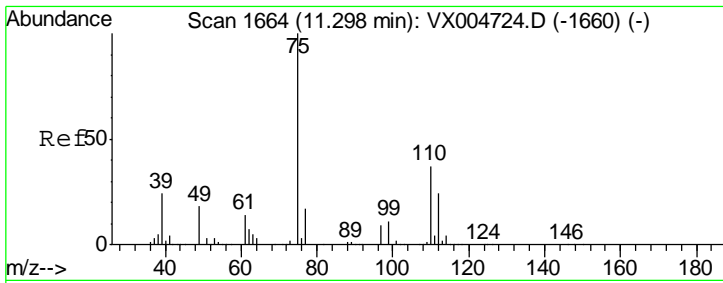
Tgt Ion	Resp	Lower	Upper
152	100		
115	56.2	40.2	120.6
150	158.0	0.0	351.0



#74  
 N-amyl acetate  
 Concen: 1.773 ug/l  
 RT: 10.90 min Scan# 1599  
 Delta R.T. 0.00 min  
 Lab File: VX005166.D  
 Acq: 09 Oct 2018 18:29

Tgt Ion	Resp	Lower	Upper
43	100		
70	0.0	32.6	48.8#
55	0.0	21.6	32.4#
61	0.0	19.1	28.7#

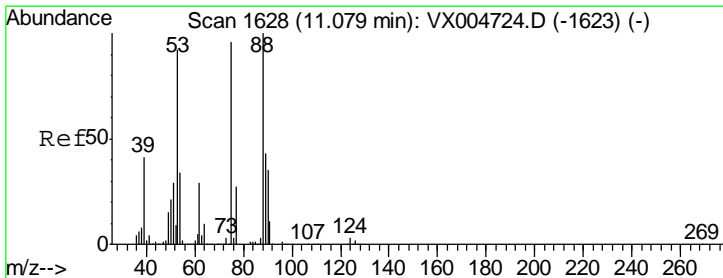
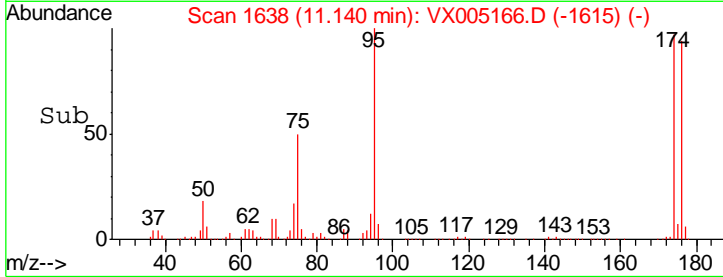
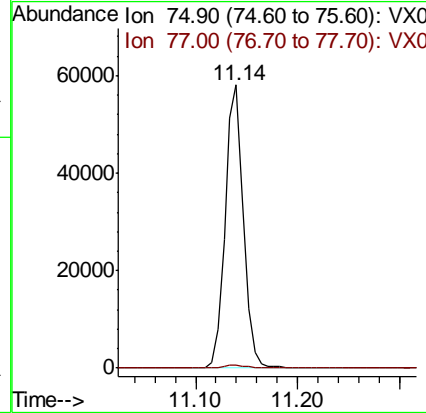
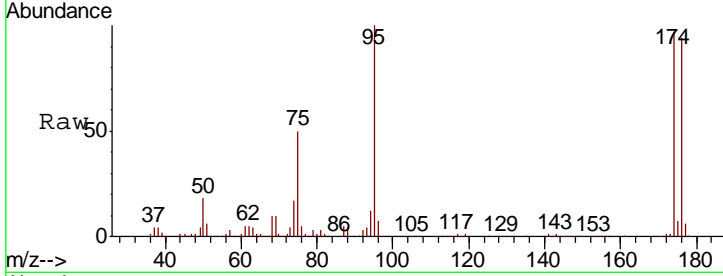




#76  
 1,2,3-Trichloropropane  
 Concen: 21.179 ug/l  
 RT: 11.14 min Scan# 1638  
 Delta R.T. -0.16 min  
 Lab File: VX005166.D  
 Acq: 09 Oct 2018 18:29

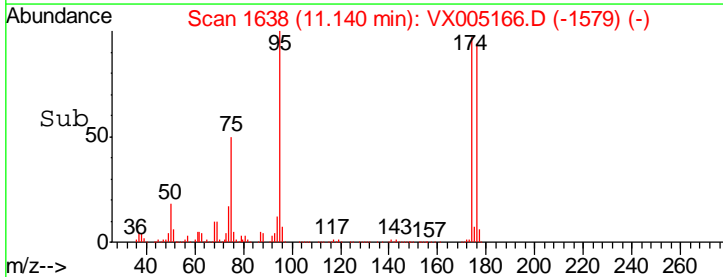
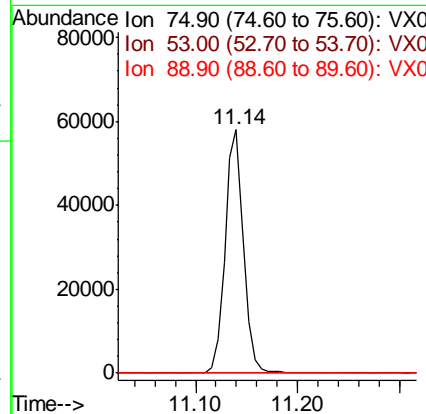
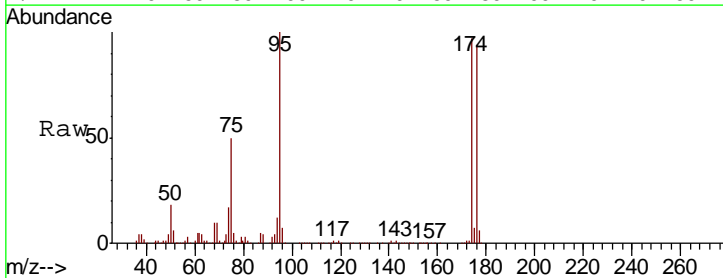
Instrument :  
 MSVOA\_X  
 ClientSampleID :  
 RE-125D2-2018001DL

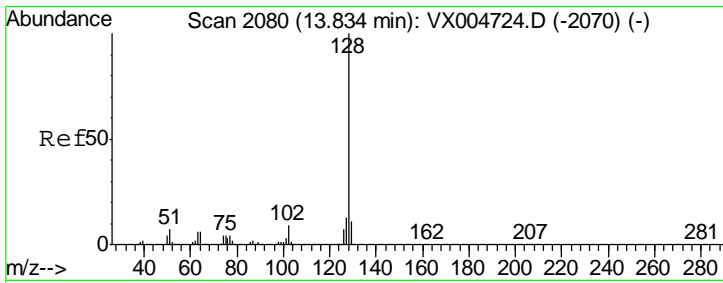
Tgt Ion: 75 Resp: 72595  
 Ion Ratio Lower Upper  
 75 100  
 77 1.3 21.4 64.3#



#81  
 trans-1,4-Dichloro-2-butene  
 Concen: 57.456 ug/l  
 RT: 11.14 min Scan# 1638  
 Delta R.T. 0.06 min  
 Lab File: VX005166.D  
 Acq: 09 Oct 2018 18:29

Tgt Ion: 75 Resp: 72595  
 Ion Ratio Lower Upper  
 75 100  
 53 0.3 80.2 120.4#  
 89 0.0 37.1 55.7#





#95  
 Naphthalene  
 Concen: 0.747 ug/l  
 RT: 13.84 min Scan# 2081  
 Delta R.T. 0.01 min  
 Lab File: VX005166.D  
 Acq: 09 Oct 2018 18:29

**Instrument :**  
 MSVOA\_X  
**ClientSampled :**  
 RE-125D2-2018001DL

Tot Ion	Ratio	Lower	Upper
128	100		
127	20.6	10.4	15.6#
129	6.4	8.7	13.1#

