

Data Path : Z:\VOASRV\HPCHEM1\MSVOA X\DATA\VX100918\
 Data File : VX005170.D
 Acq On : 09 Oct 2018 20:16
 Operator : JC/MD
 Sample : J5284-09
 Misc : 5.0mL/MSVOA X/WATER
 ALS Vial : 16 Sample Multiplier: 1

Instrument :
 MSVOA_X
 ClientSampleId :
 RE-120D1-20181002

Quant Time: Oct 10 05:54:58 2018
 Quant Method : Z:\VOASRV\HPCHEM1\MSVOA_X\METHOD\82X092618W.M
 Quant Title : SW846 8260
 QLast Update : Wed Oct 03 04:00:03 2018
 Response via : Initial Calibration

Internal Standards	R.T.	QIon	Response	Conc	Units	Dev(Min)
1) Pentafluorobenzene	5.67	168	175546	50.00	ug/l	0.00
34) 1,4-Difluorobenzene	6.87	114	287671	50.00	ug/l	0.00
63) Chlorobenzene-d5	10.12	117	281520	50.00	ug/l	0.00
72) 1,4-Dichlorobenzene-d4	12.08	152	158597	50.00	ug/l	0.00

System Monitoring Compounds

33) 1,2-Dichloroethane-d4	6.07	65	138897	55.39	ug/l	0.00
Spiked Amount	50.000		Recovery	=	110.78%	
35) Dibromofluoromethane	5.50	113	117274	48.10	ug/l	0.00
Spiked Amount	50.000		Recovery	=	96.20%	
50) Toluene-d8	8.72	98	416410	51.38	ug/l	0.00
Spiked Amount	50.000		Recovery	=	102.76%	
62) 4-Bromofluorobenzene	11.14	95	147970	50.68	ug/l	0.00
Spiked Amount	50.000		Recovery	=	101.36%	

Target Compounds

					Qvalue
2) Dichlorodifluoromethane	1.20	85	819	0.342 ug/l	98
5) Bromomethane	1.64	94	504	0.312 ug/l #	74
6) Chloroethane	1.67	64	2010	Below Cal #	45
7) Trichlorofluoromethane	1.93	101	1157	0.343 ug/l	88
9) 1,1,2-Trichlorotrifluoroet	2.39	101	34657	18.044 ug/l	98
11) Tert butyl alcohol	3.06	59	197	0.281 ug/l #	72
12) 1,1-Dichloroethene	2.37	96	22999	12.091 ug/l	96
16) Acetone	2.45	43	1796	1.227 ug/l	94
20) Methylene Chloride	2.87	84	307	Below Cal #	49
21) trans-1,2-Dichloroethene	3.15	96	460	0.221 ug/l #	67
24) 1,1-Dichloroethane	3.70	63	9401	2.255 ug/l	97
25) 2-Butanone	4.71	43	1854	0.859 ug/l	98
27) cis-1,2-Dichloroethene	4.60	96	8713	3.746 ug/l	95
29) Tetrahydrofuran	5.17	42	1235	0.921 ug/l #	56
30) Chloroform	5.21	83	2812	0.714 ug/l	87
31) Cyclohexane	5.66	56	3385	1.061 ug/l #	1
32) 1,1,1-Trichloroethane	5.50	97	2774	0.862 ug/l #	49
36) 1,1-Dichloropropene	5.67	75	12360	3.716 ug/l #	46
38) Carbon Tetrachloride	5.77	117	1854	0.530 ug/l	94
39) Methylcyclohexane	7.21	83	24037	7.077 ug/l #	1
42) 1,2-Dichloroethane	6.21	62	1056	0.287 ug/l	86
44) Trichloroethene	7.22	130	2128981	831.610 ug/l	99
49) 1,4-Dioxane	7.76	88	2264	31.504 ug/l #	93
51) 4-Methyl-2-Pentanone	8.71	43	2024	0.504 ug/l #	1
55) 1,1,2-Trichloroethane	9.22	97	2520	1.005 ug/l	93
60) Dibromochloromethane	9.34	129	2177	0.868 ug/l #	10
64) Tetrachloroethene	9.34	164	2578	0.930 ug/l #	77
70) Styrene	10.71	104	40	2.145 ug/l #	1
74) N-amyl acetate	10.90	43	19	1.751 ug/l #	43
76) 1,2,3-Trichloropropane	11.14	75	72982	20.531 ug/l #	35
80) 1,3,5-Trimethylbenzene	11.51	105	141	Below Cal #	29
81) trans-1,4-Dichloro-2-buten	11.14	75	72982	55.757 ug/l #	10
84) 1,2,4-Trimethylbenzene	11.80	105	287	Below Cal	97
95) Naphthalene	13.83	128	489	0.756 ug/l #	85

Data Path : Z:\VOASRV\HPCHEM1\MSVOA X\DATA\VX100918\
Data File : VX005170.D
Acq On : 09 Oct 2018 20:16
Operator : JC/MD
Sample : J5284-09
Misc : 5.0mL/MSVOA X/WATER
ALS Vial : 16 Sample Multiplier: 1

Instrument :
MSVOA_X
ClientSampleId :
RE-120D1-20181002

Quant Time: Oct 10 05:54:58 2018
Quant Method : Z:\VOASRV\HPCHEM1\MSVOA_X\METHOD\82X092618W.M
Quant Title : SW846 8260
QLast Update : Wed Oct 03 04:00:03 2018
Response via : Initial Calibration

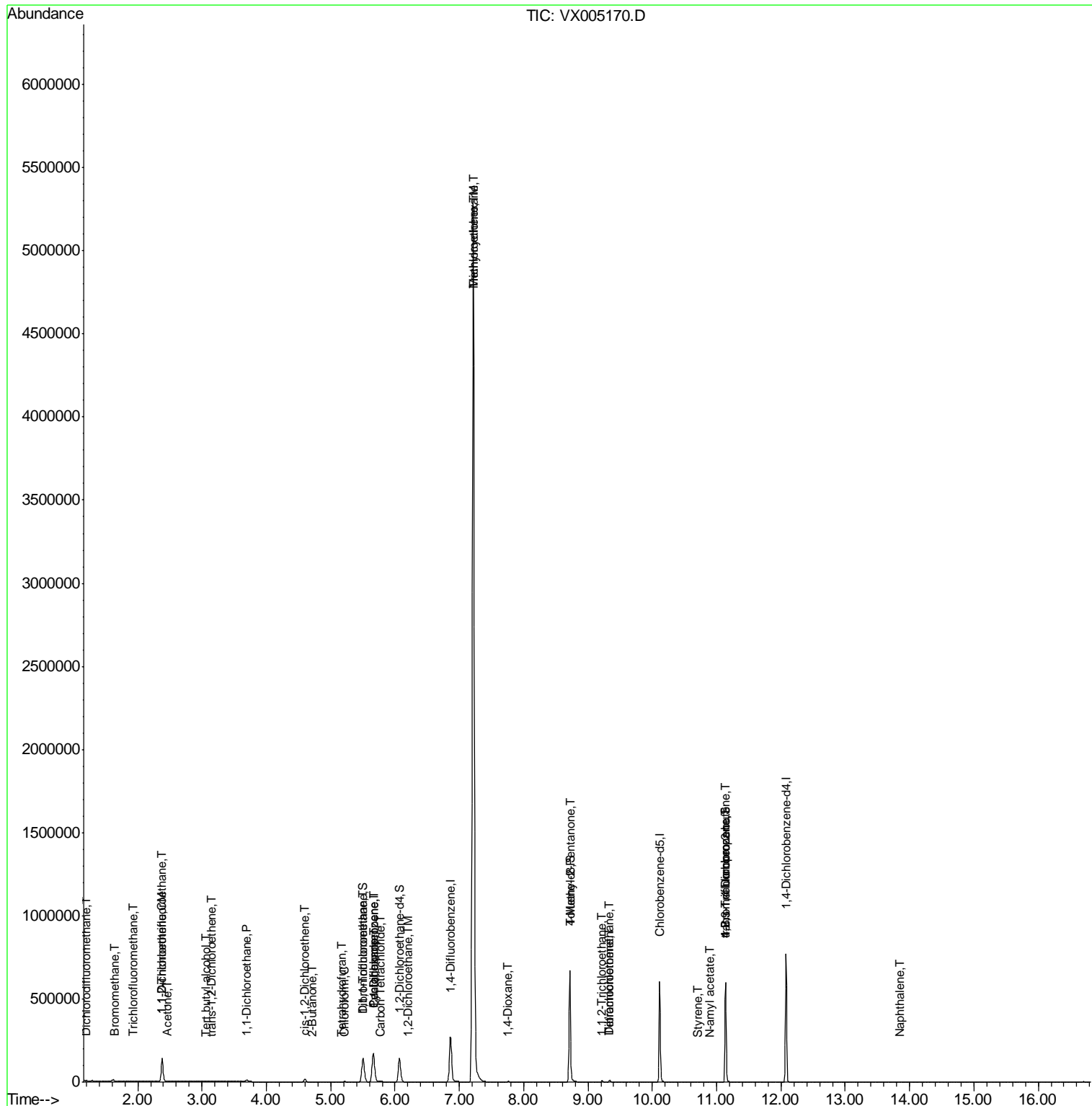
Internal Standards R.T. QIon Response Conc Units Dev(Min)

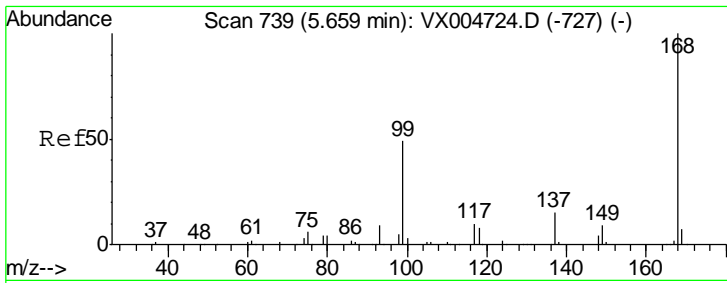
(#) = qualifier out of range (m) = manual integration (+) = signals summed

Data Path : Z:\VOASRV\HPCHEM1\MSVOA X\DATA\VX100918\
 Data File : VX005170.D
 Acq On : 09 Oct 2018 20:16
 Operator : JC/MD
 Sample : J5284-09
 Misc : 5.0mL/MSVOA X/WATER
 ALS Vial : 16 Sample Multiplier: 1

Instrument :
 MSVOA_X
 ClientSampleId :
 RE-120D1-20181002

Quant Time: Oct 10 05:54:58 2018
 Quant Method : Z:\VOASRV\HPCHEM1\MSVOA_X\METHOD\82X092618W.M
 Quant Title : SW846 8260
 QLast Update : Wed Oct 03 04:00:03 2018
 Response via : Initial Calibration

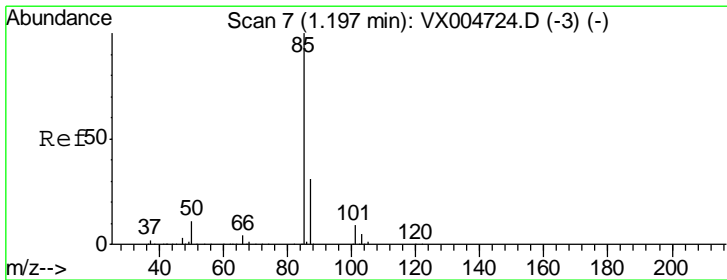
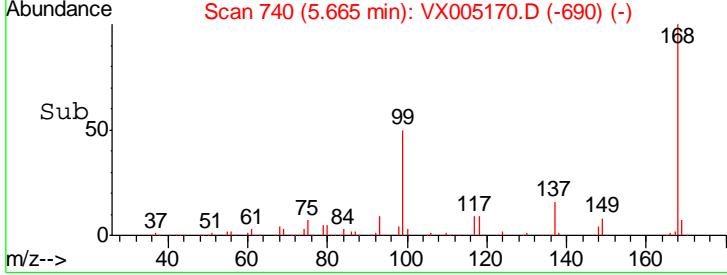
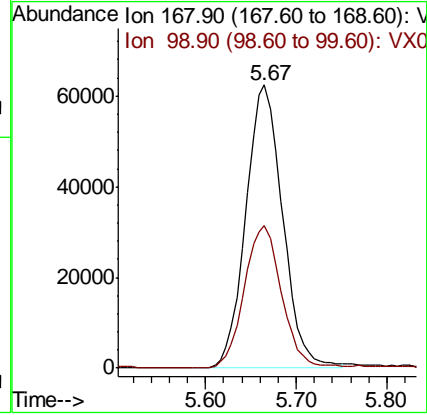
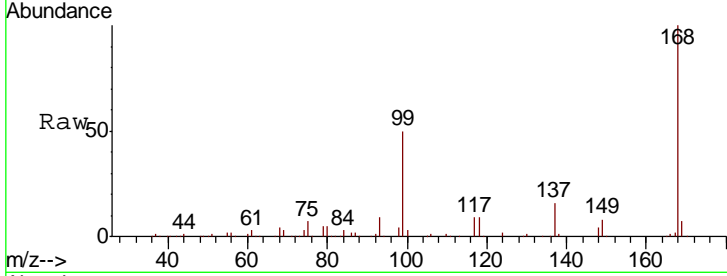




#1
 Pentafluorobenzene
 Concen: 50.000 ug/l
 RT: 5.67 min Scan# 740
 Delta R.T. 0.01 min
 Lab File: VX005170.D
 Acq: 09 Oct 2018 20:16

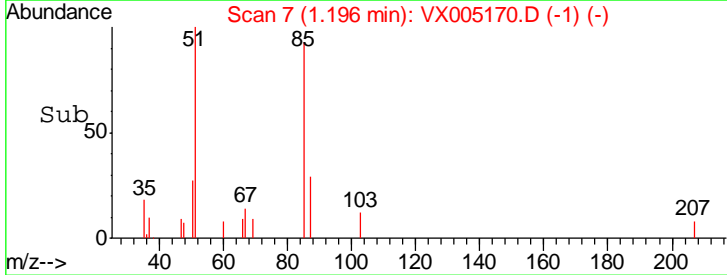
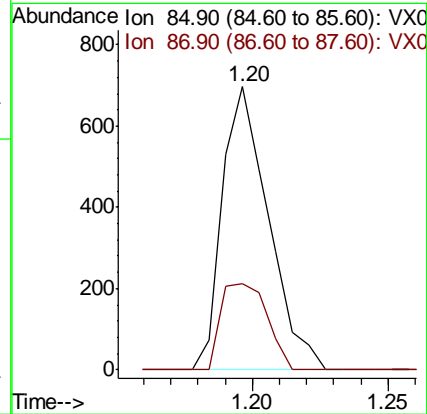
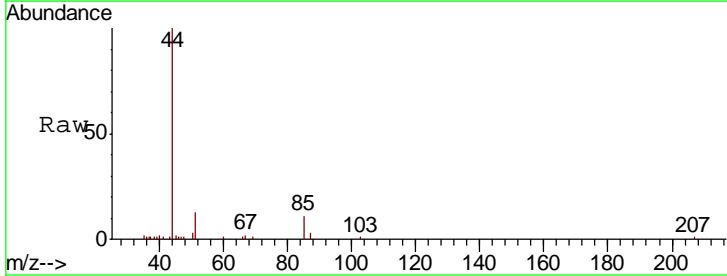
Instrument :
 MSVOA_X
 ClientSampleId :
 RE-120D1-20181002

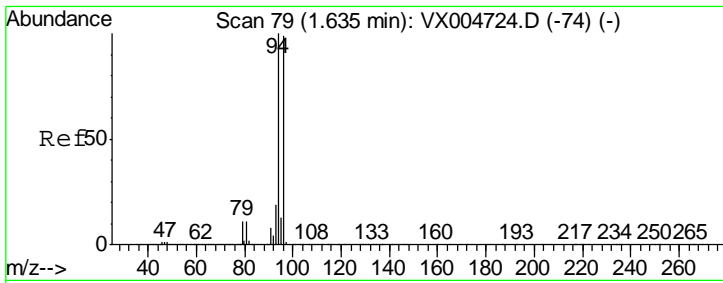
Tgt Ion	Resp	Lower	Upper
168	175546		
168	100		
99	50.3	39.3	58.9



#2
 Dichlorodifluoromethane
 Concen: 0.342 ug/l
 RT: 1.20 min Scan# 7
 Delta R.T. -0.00 min
 Lab File: VX005170.D
 Acq: 09 Oct 2018 20:16

Tgt Ion	Resp	Lower	Upper
85	819		
85	100		
87	30.6	15.7	47.1

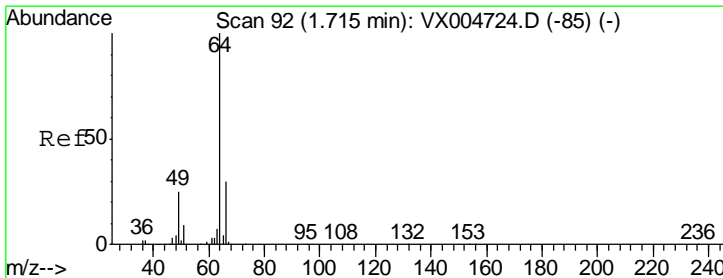
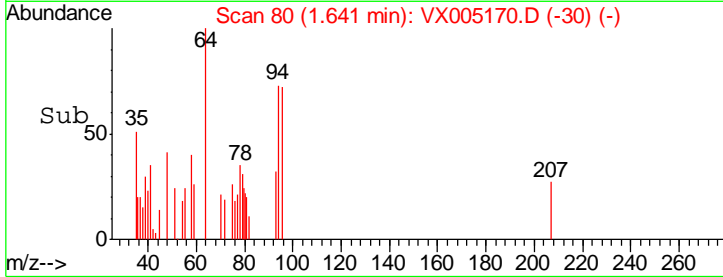
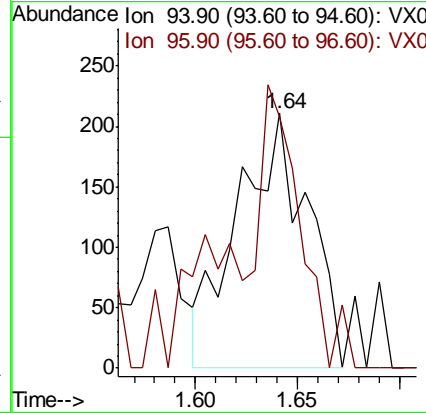
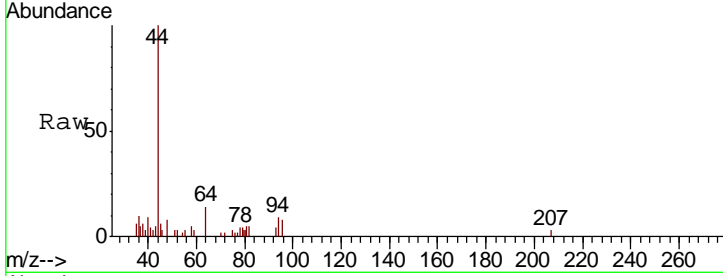




#5
 Bromomethane
 Concen: 0.312 ug/l
 RT: 1.64 min Scan# 80
 Delta R.T. 0.01 min
 Lab File: VX005170.D
 Acq: 09 Oct 2018 20:16

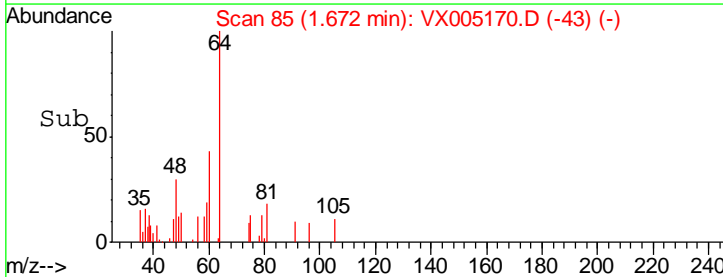
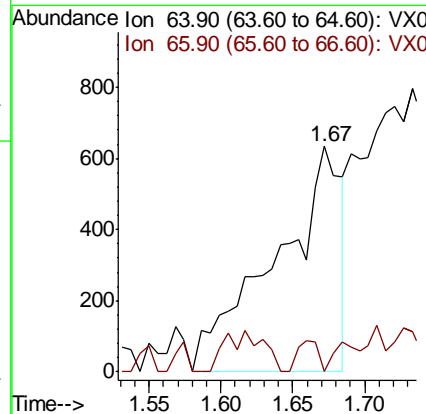
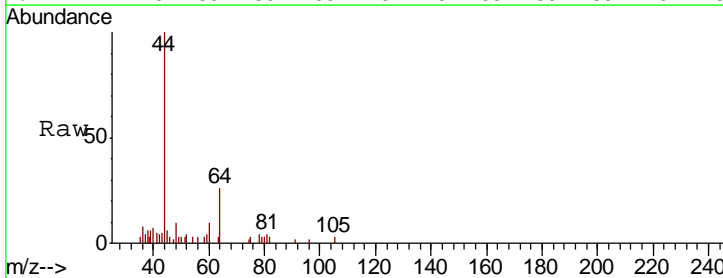
Instrument :
 MSVOA_X
 ClientSampled :
 RE-120D1-20181002

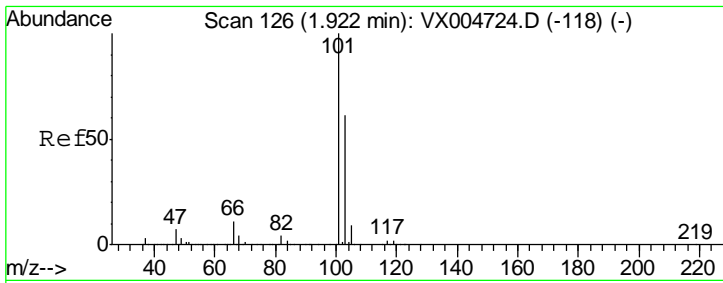
Tgt Ion: 94 Resp: 504
 Ion Ratio Lower Upper
 94 100
 96 73.9 79.5 119.3#



#6
 Chloroethane
 Concen: Below Cal
 RT: 1.67 min Scan# 85
 Delta R.T. -0.04 min
 Lab File: VX005170.D
 Acq: 09 Oct 2018 20:16

Tgt Ion: 64 Resp: 2010
 Ion Ratio Lower Upper
 64 100
 66 0.0 23.8 35.6#

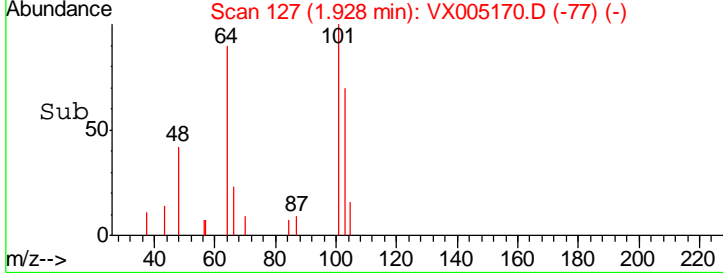
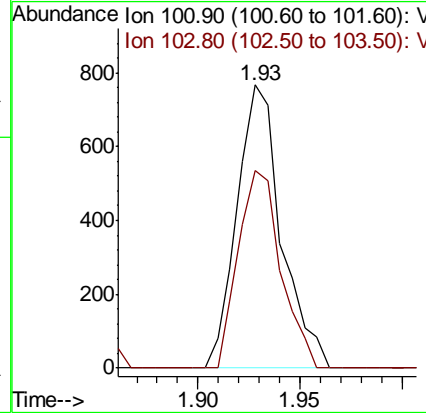
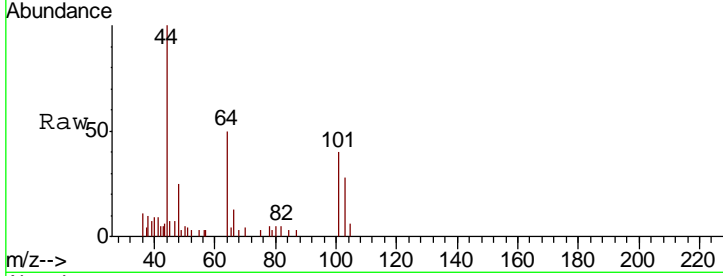




#7
 Trichlorofluoromethane
 Concen: 0.343 ug/l
 RT: 1.93 min Scan# 127
 Delta R.T. 0.01 min
 Lab File: VX005170.D
 Acq: 09 Oct 2018 20:16

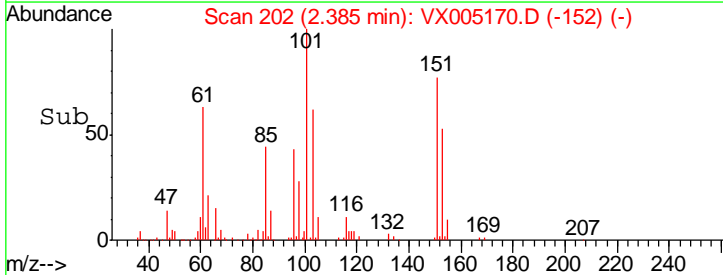
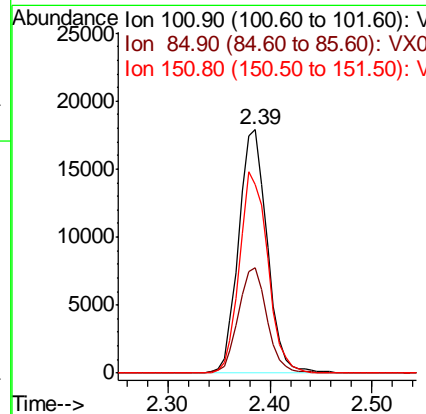
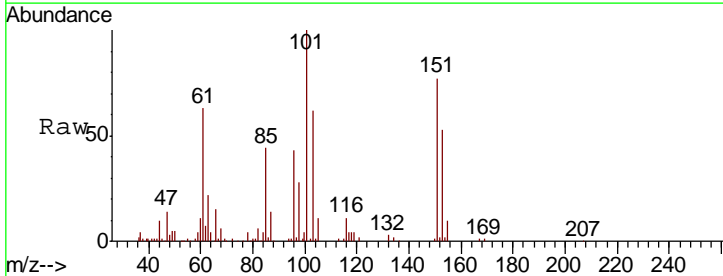
Instrument :
 MSVOA_X
ClientSampled :
 RE-120D1-20181002

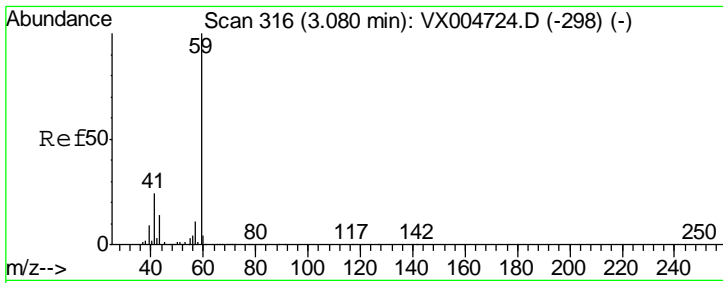
Tgt Ion	Resp	Lower	Upper
101	1157		
103	69.8	48.4	72.6



#9
 1,1,2-Trichlorotrifluoroethane
 Concen: 18.044 ug/l
 RT: 2.39 min Scan# 202
 Delta R.T. 0.01 min
 Lab File: VX005170.D
 Acq: 09 Oct 2018 20:16

Tgt Ion	Resp	Lower	Upper
101	34657		
85	43.4	35.9	53.9
151	81.9	66.6	100.0

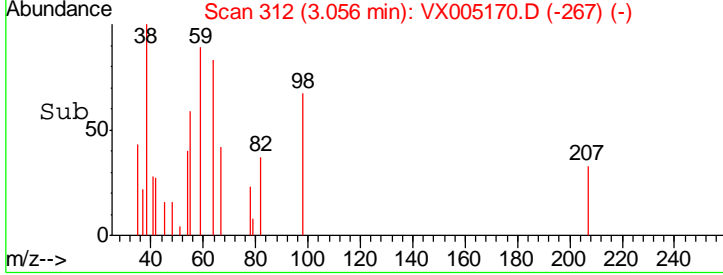
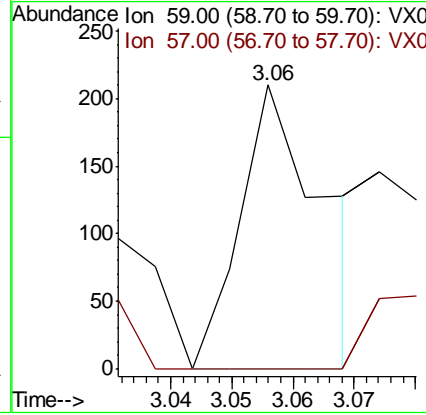
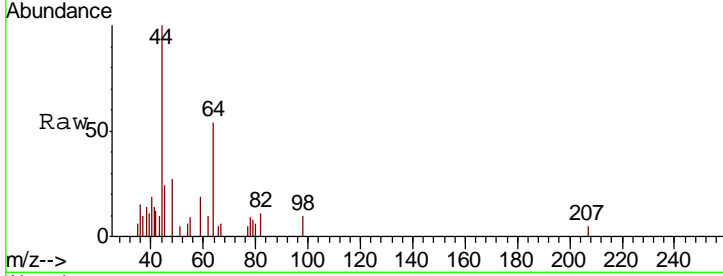




#11
 Tert butyl alcohol
 Concen: 0.281 ug/l
 RT: 3.06 min Scan# 312
 Delta R.T. -0.02 min
 Lab File: VX005170.D
 Acq: 09 Oct 2018 20:16

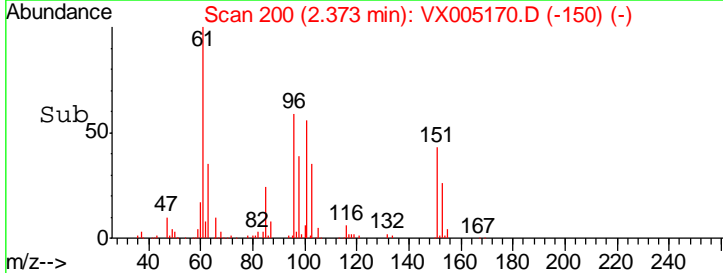
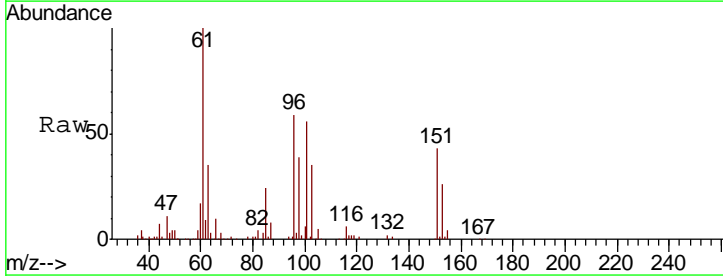
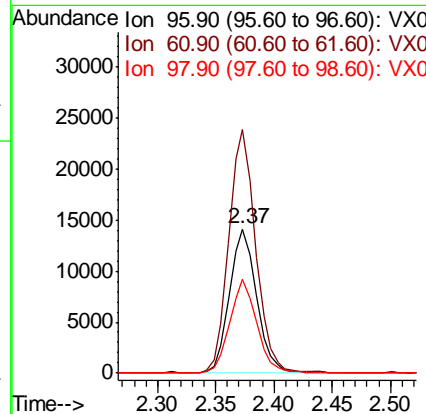
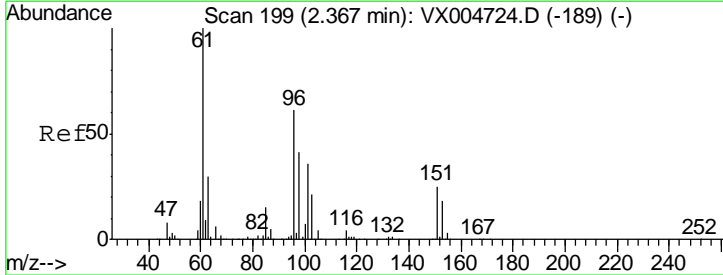
Instrument :
 MSVOA_X
 ClientSampled :
 RE-120D1-20181002

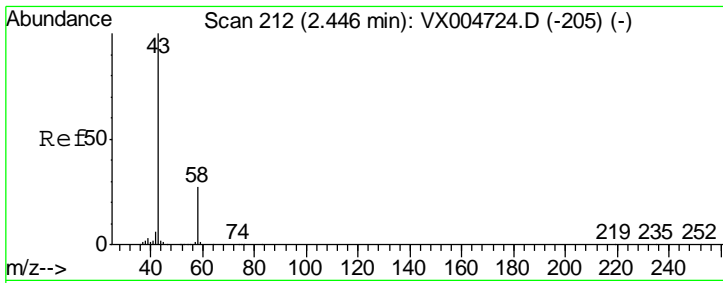
Tgt Ion	Resp	Lower	Upper
59	197		
57	0.0	8.6	12.8#



#12
 1,1-Dichloroethene
 Concen: 12.091 ug/l
 RT: 2.37 min Scan# 200
 Delta R.T. 0.01 min
 Lab File: VX005170.D
 Acq: 09 Oct 2018 20:16

Tgt Ion	Resp	Lower	Upper
96	22999		
96	100		
61	169.0	130.2	195.4
98	65.4	53.4	80.0

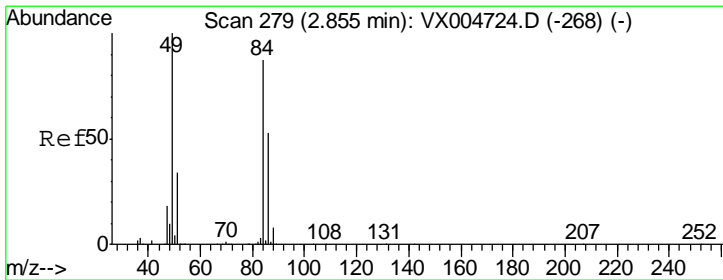
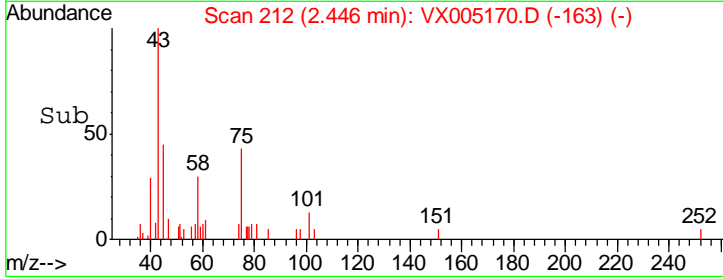
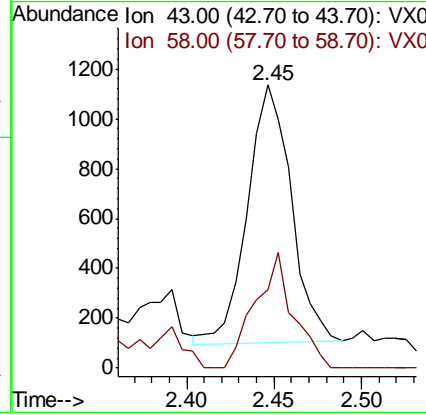
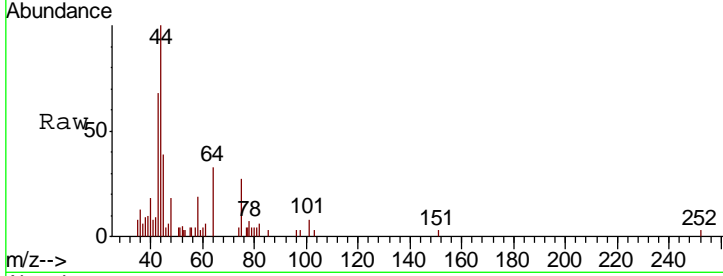




#16
 Acetone
 Concen: 1.227 ug/l
 RT: 2.45 min Scan# 212
 Delta R.T. -0.00 min
 Lab File: VX005170.D
 Acq: 09 Oct 2018 20:16

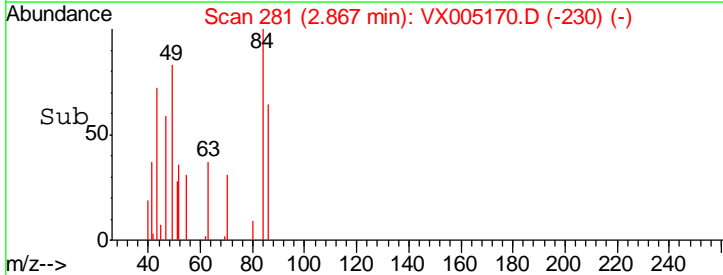
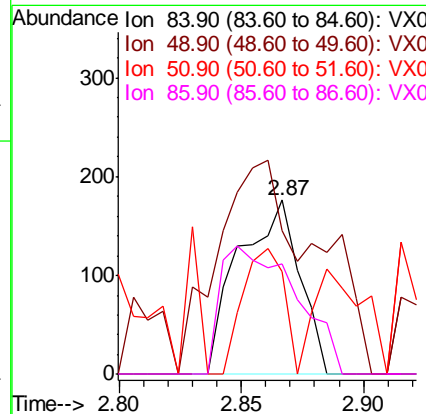
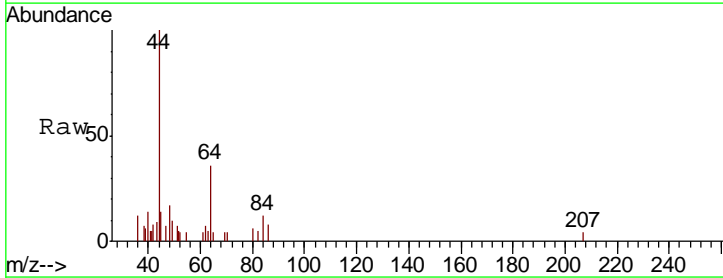
Instrument :
 MSVOA_X
 ClientSampled :
 RE-120D1-20181002

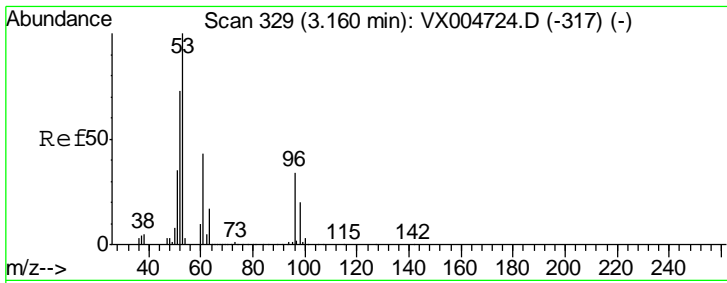
Tgt Ion	Resp	Lower	Upper
43	1796		
43	100		
58	30.6	21.8	32.6



#20
 Methylene Chloride
 Concen: Below Cal
 RT: 2.87 min Scan# 281
 Delta R.T. 0.01 min
 Lab File: VX005170.D
 Acq: 09 Oct 2018 20:16

Tgt Ion	Resp	Lower	Upper
84	307		
84	100		
49	32.4	92.3	138.5#
51	9.7	31.8	47.6#
86	63.6	48.5	72.7

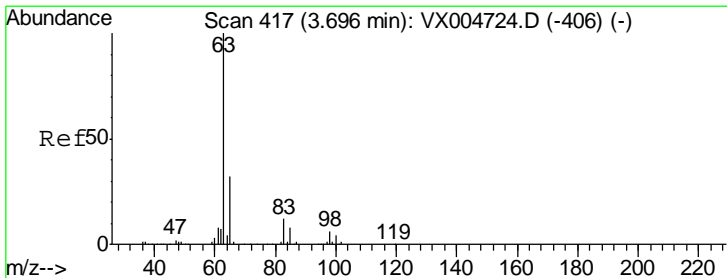
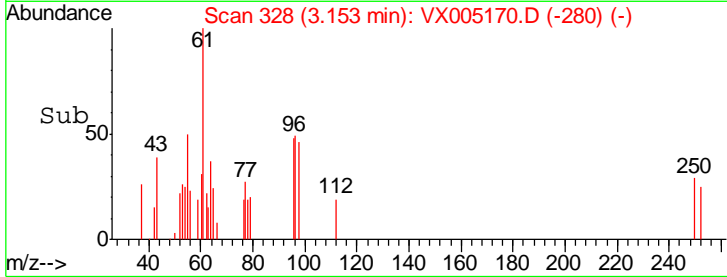
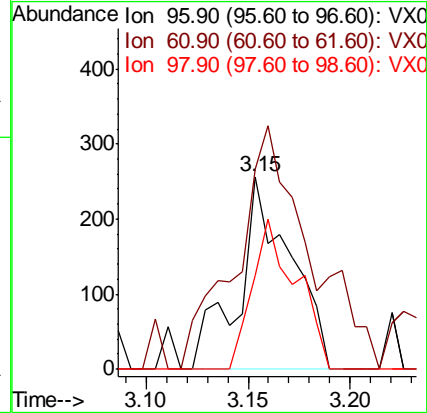
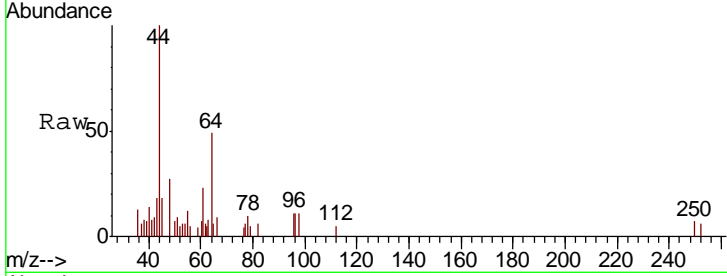




#21
 trans-1,2-Dichloroethene
 Concen: 0.221 ug/l
 RT: 3.15 min Scan# 328
 Delta R.T. -0.01 min
 Lab File: VX005170.D
 Acq: 09 Oct 2018 20:16

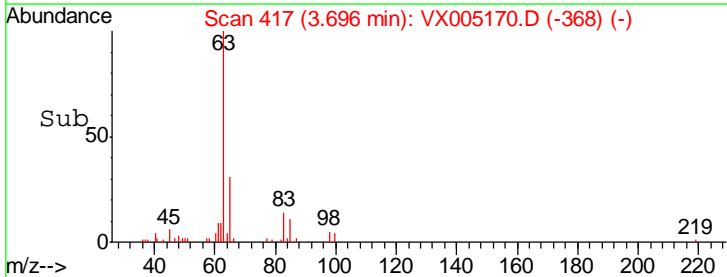
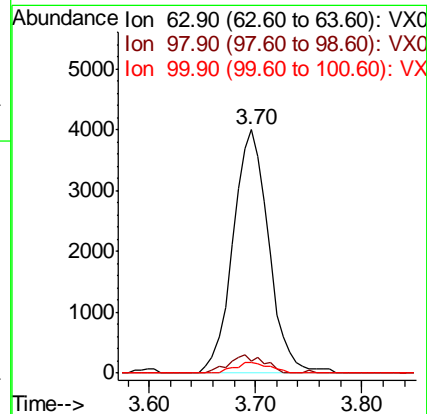
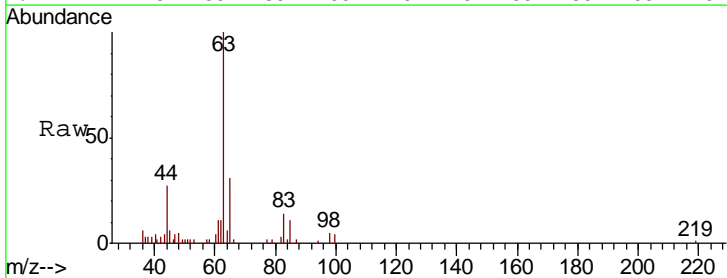
Instrument :
 MSVOA_X
 ClientSampleId :
 RE-120D1-20181002

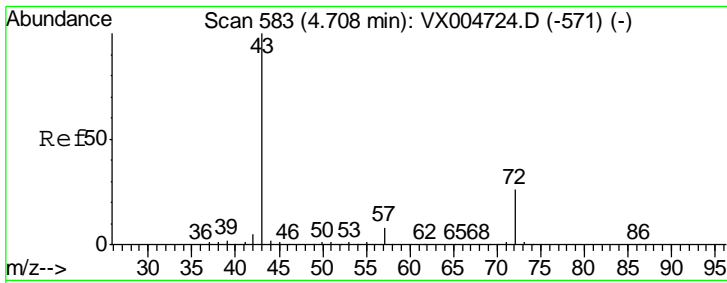
Tgt Ion	Resp	Lower	Upper
96	460		
61	78.6	101.0	151.6#
98	48.2	47.2	70.8



#24
 1,1-Dichloroethane
 Concen: 2.255 ug/l
 RT: 3.70 min Scan# 417
 Delta R.T. -0.00 min
 Lab File: VX005170.D
 Acq: 09 Oct 2018 20:16

Tgt Ion	Resp	Lower	Upper
63	9401		
98	5.0	3.0	9.2
100	4.5	2.0	5.8

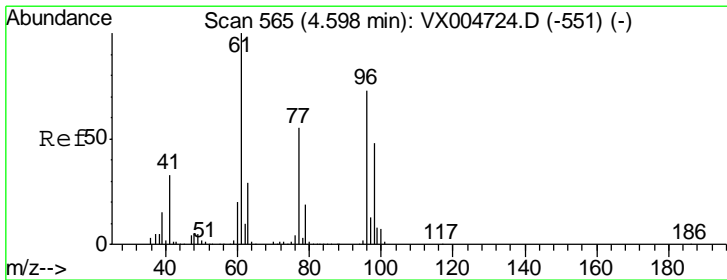
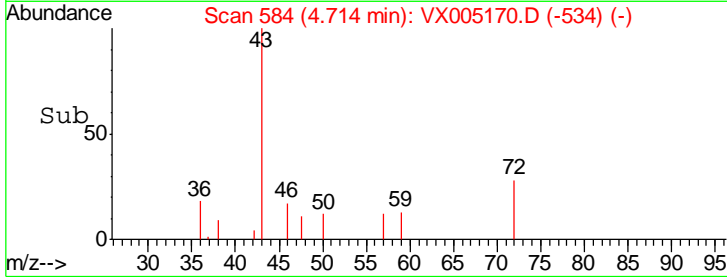
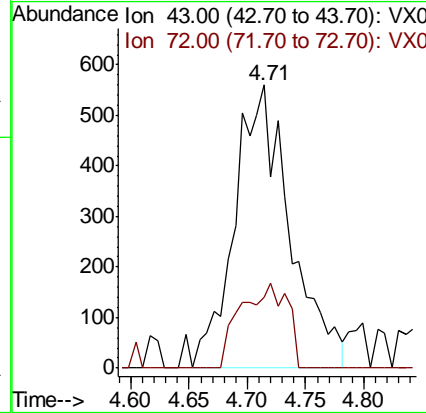
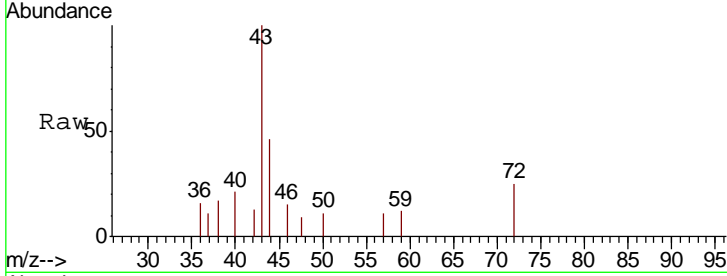




#25
 2-Butanone
 Concen: 0.859 ug/l
 RT: 4.71 min Scan# 584
 Delta R.T. 0.01 min
 Lab File: VX005170.D
 Acq: 09 Oct 2018 20:16

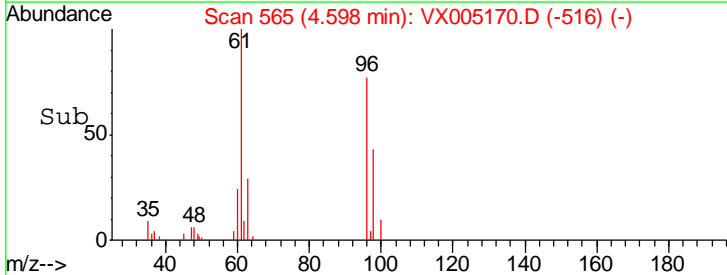
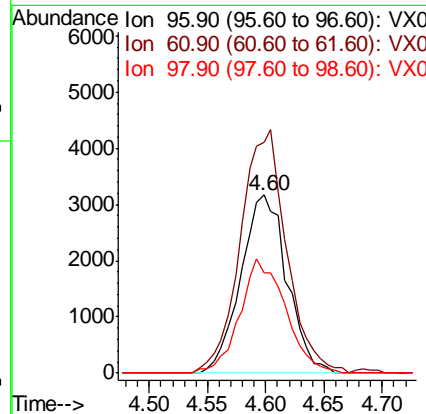
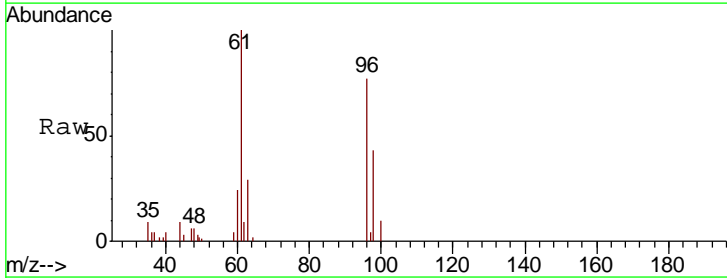
Instrument :
 MSVOA_X
 ClientSampleId :
 RE-120D1-20181002

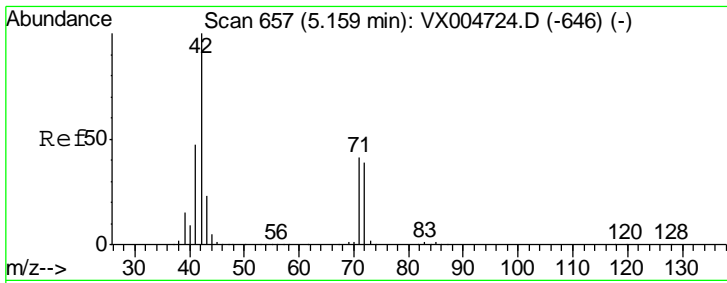
Tgt Ion	Resp	Lower	Upper
43	1854		
72	24.8	20.8	31.2



#27
 cis-1,2-Dichloroethene
 Concen: 3.746 ug/l
 RT: 4.60 min Scan# 565
 Delta R.T. -0.00 min
 Lab File: VX005170.D
 Acq: 09 Oct 2018 20:16

Tgt Ion	Resp	Lower	Upper
96	8713		
61	136.7	0.0	285.8
98	63.4	0.0	136.2

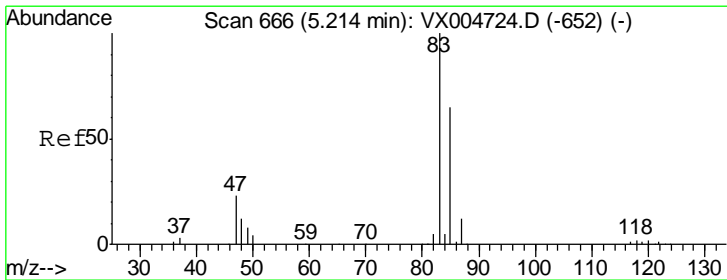
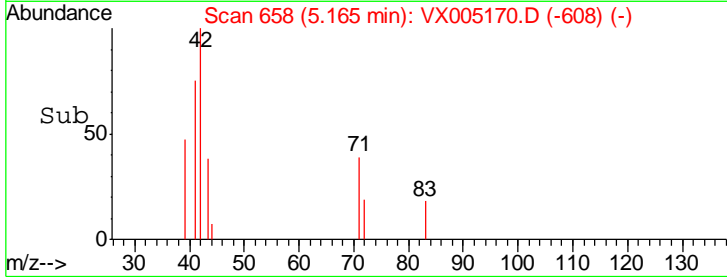
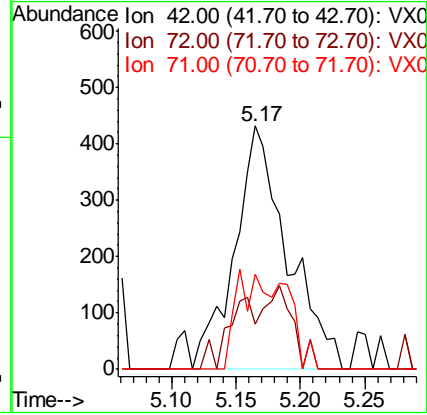
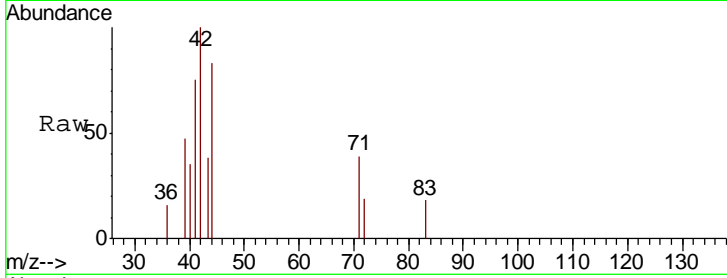




#29
 Tetrahydrofuran
 Concen: 0.921 ug/l
 RT: 5.17 min Scan# 658
 Delta R.T. 0.01 min
 Lab File: VX005170.D
 Acq: 09 Oct 2018 20:16

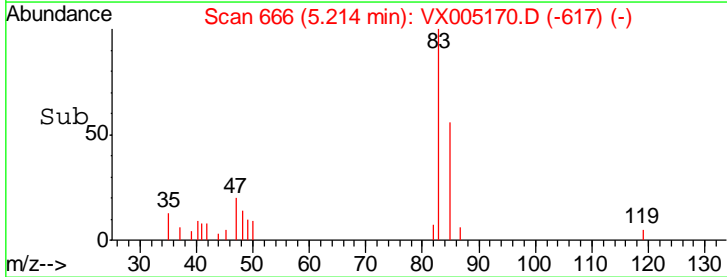
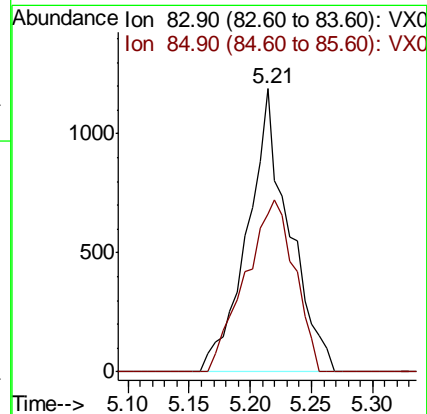
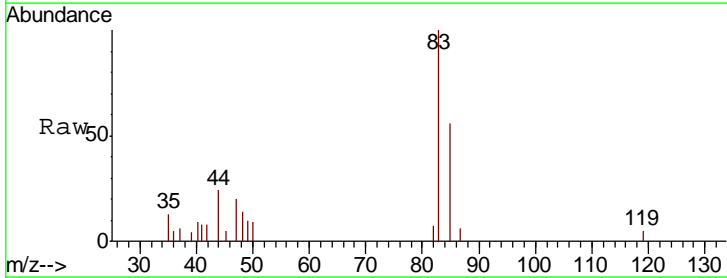
Instrument :
 MSVOA_X
 ClientSampleId :
 RE-120D1-20181002

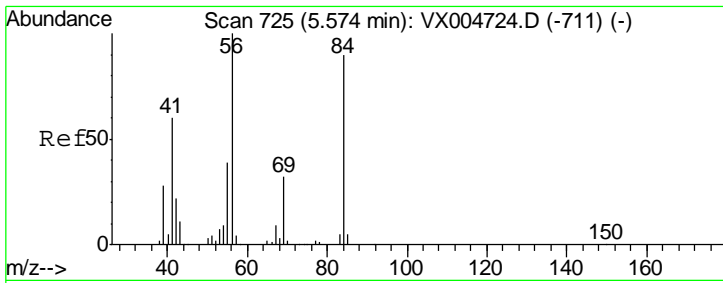
Tgt Ion	Resp	Lower	Upper
42	1235		
72	15.9	33.7	50.5#
71	11.2	32.2	48.4#



#30
 Chloroform
 Concen: 0.714 ug/l
 RT: 5.21 min Scan# 666
 Delta R.T. -0.00 min
 Lab File: VX005170.D
 Acq: 09 Oct 2018 20:16

Tgt Ion	Resp	Lower	Upper
83	2812		
85	55.6	52.4	78.6

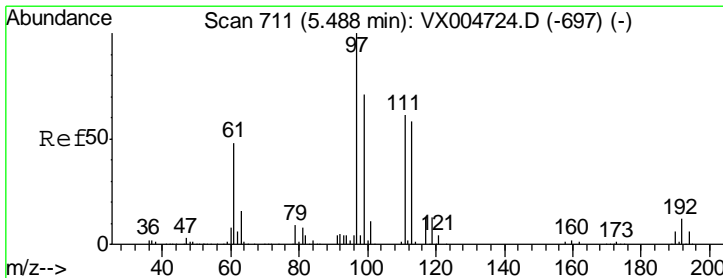
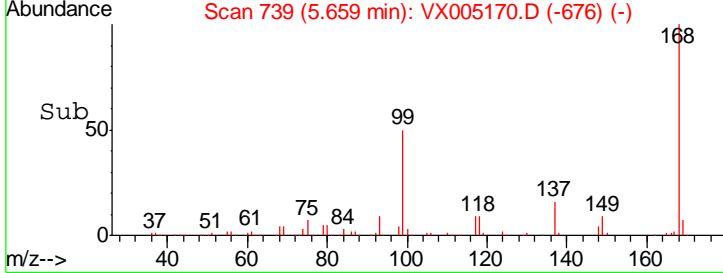
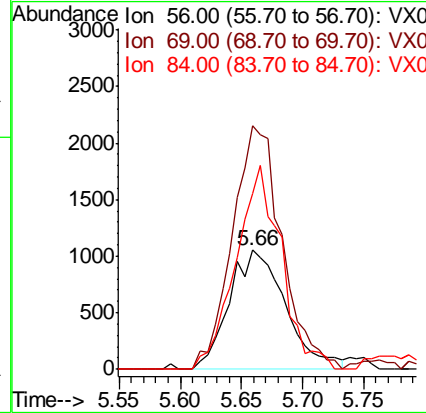
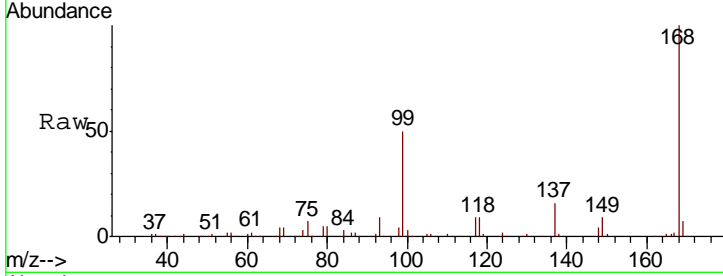




#31
 Cyclohexane
 Concen: 1.061 ug/l
 RT: 5.66 min Scan# 739
 Delta R.T. 0.09 min
 Lab File: VX005170.D
 Acq: 09 Oct 2018 20:16

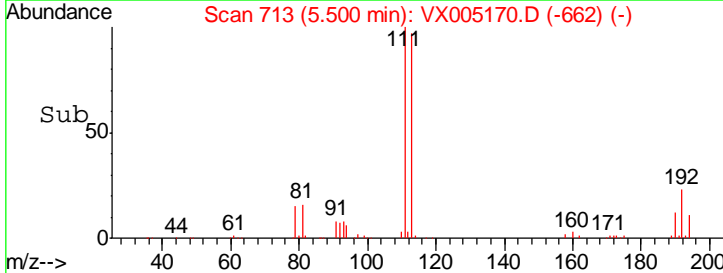
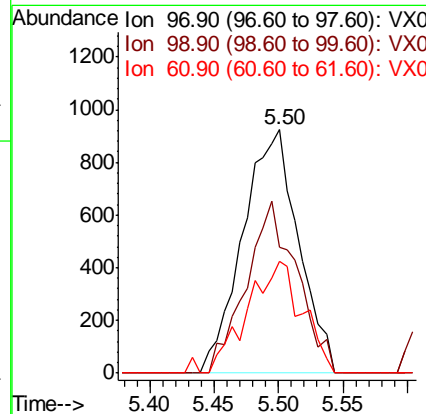
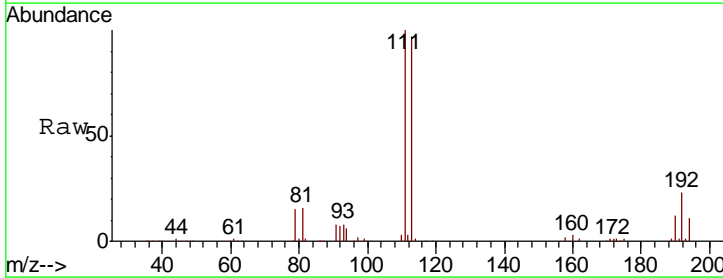
Instrument :
 MSVOA_X
 ClientSampleID :
 RE-120D1-20181002

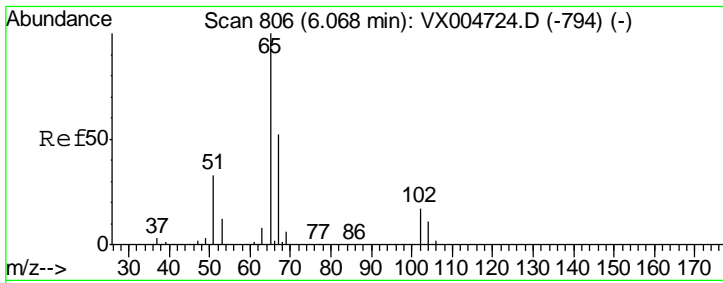
Tgt Ion	Resp	Lower	Upper
56	100		
69	204.9	25.9	38.9#
84	147.7	71.9	107.9#



#32
 1,1,1-Trichloroethane
 Concen: 0.862 ug/l
 RT: 5.50 min Scan# 713
 Delta R.T. 0.01 min
 Lab File: VX005170.D
 Acq: 09 Oct 2018 20:16

Tgt Ion	Resp	Lower	Upper
97	100		
99	0.0	54.6	82.0#
61	45.2	37.5	56.3

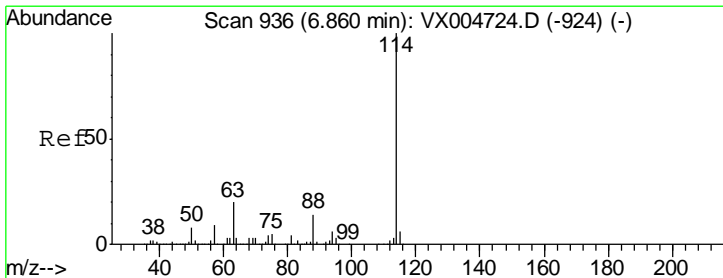
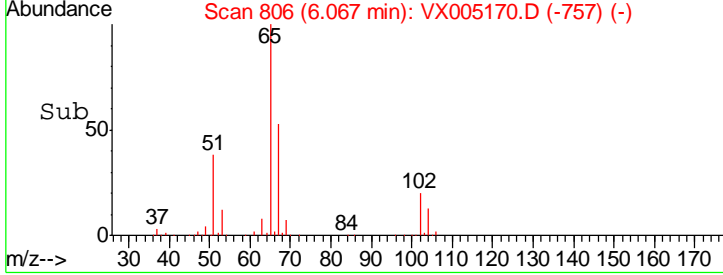
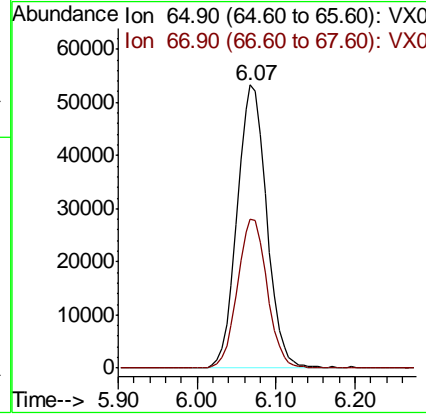
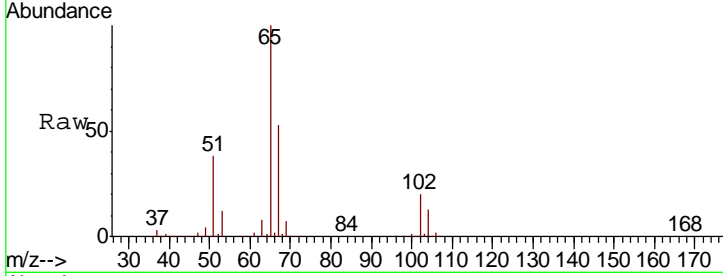




#33
 1,2-Dichloroethane-d4
 Concen: 55.389 ug/l
 RT: 6.07 min Scan# 806
 Delta R.T. -0.00 min
 Lab File: VX005170.D
 Acq: 09 Oct 2018 20:16

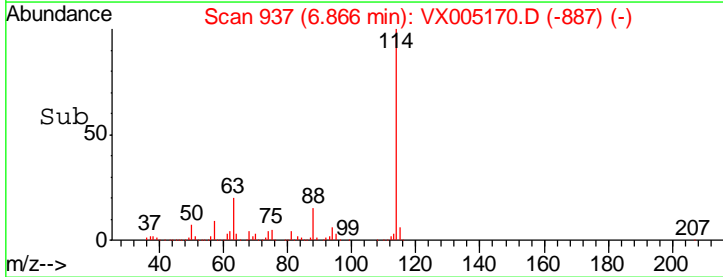
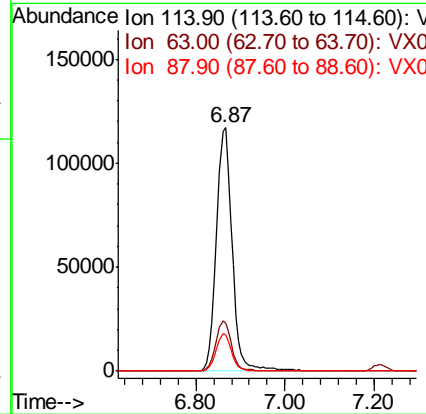
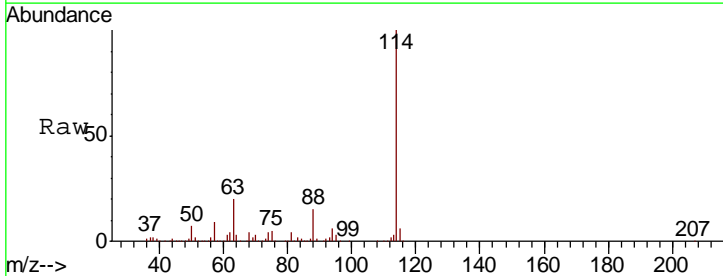
Instrument : MSVOA_X
 ClientSampleId : RE-120D1-20181002

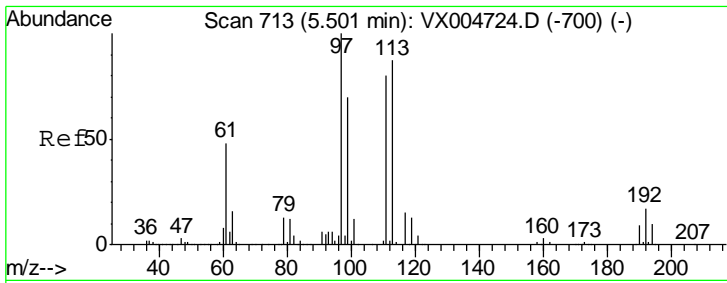
Tgt Ion	Resp	Lower	Upper
65	138897		
67	52.7	0.0	107.4



#34
 1,4-Difluorobenzene
 Concen: 50.000 ug/l
 RT: 6.87 min Scan# 937
 Delta R.T. 0.01 min
 Lab File: VX005170.D
 Acq: 09 Oct 2018 20:16

Tgt Ion	Resp	Lower	Upper
114	287671		
63	19.8	0.0	39.8
88	14.8	0.0	27.0

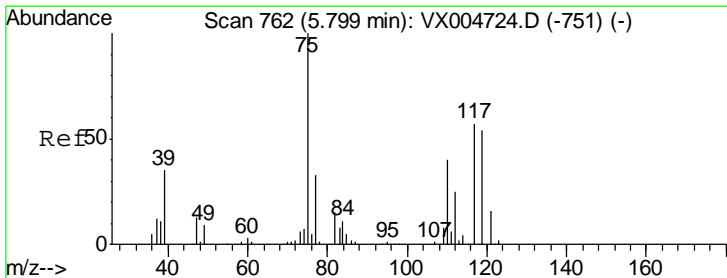
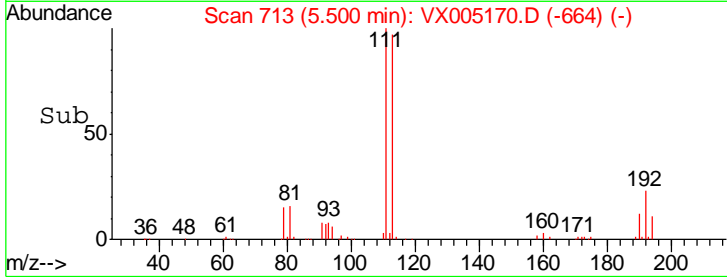
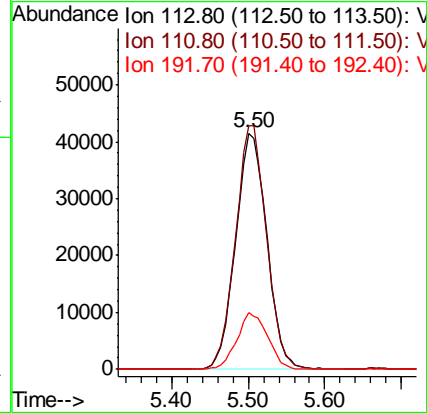
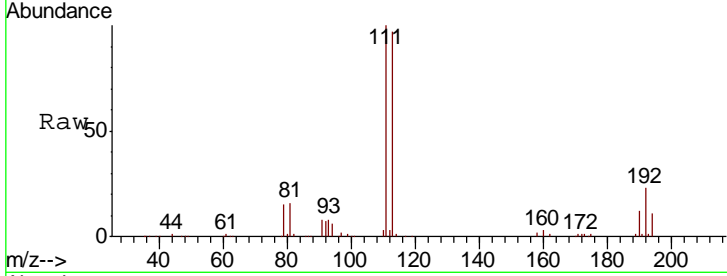




#35
 Dibromofluoromethane
 Concen: 48.102 ug/l
 RT: 5.50 min Scan# 713
 Delta R.T. -0.00 min
 Lab File: VX005170.D
 Acq: 09 Oct 2018 20:16

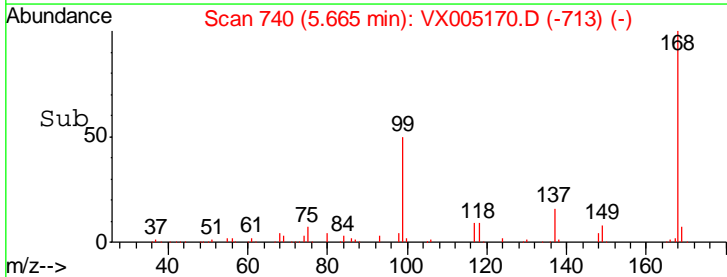
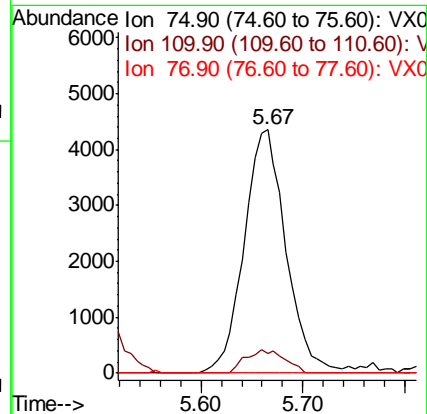
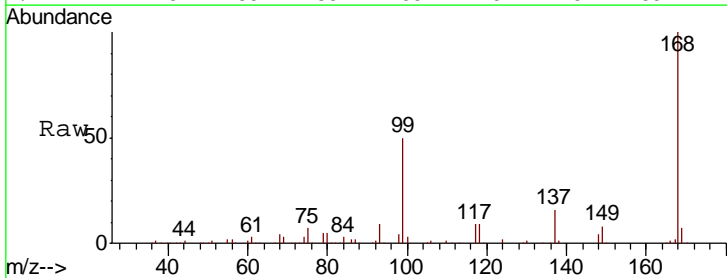
Instrument :
 MSVOA_X
 ClientSampleId :
 RE-120D1-20181002

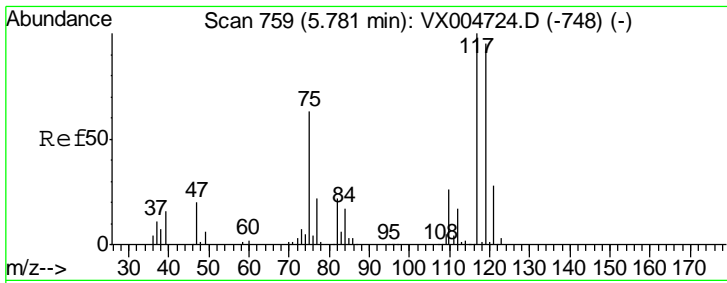
Tgt Ion	Resp	Lower	Upper
113	117274		
111	102.3	77.0	115.4
192	23.8	17.0	25.6



#36
 1,1-Dichloropropene
 Concen: 3.716 ug/l
 RT: 5.67 min Scan# 740
 Delta R.T. -0.13 min
 Lab File: VX005170.D
 Acq: 09 Oct 2018 20:16

Tgt Ion	Resp	Lower	Upper
75	12360		
110	8.9	20.0	59.9#
77	0.0	27.1	40.7#

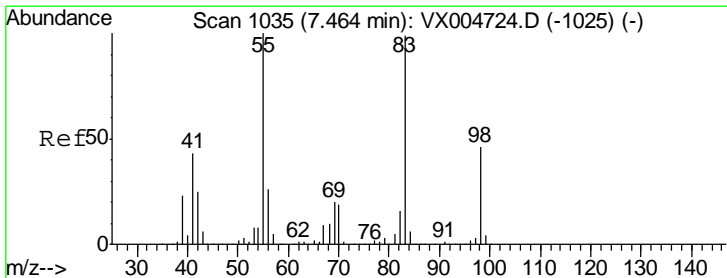
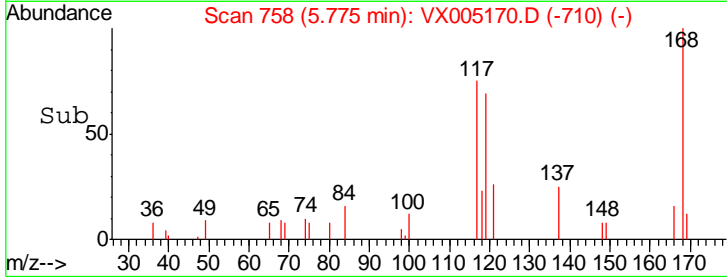
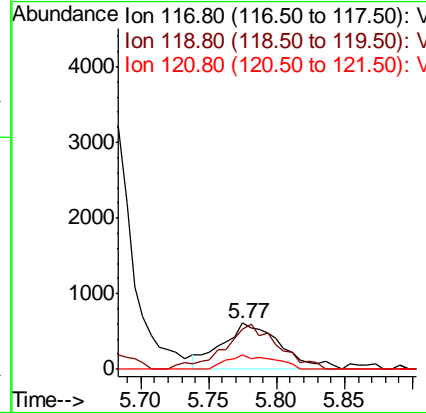
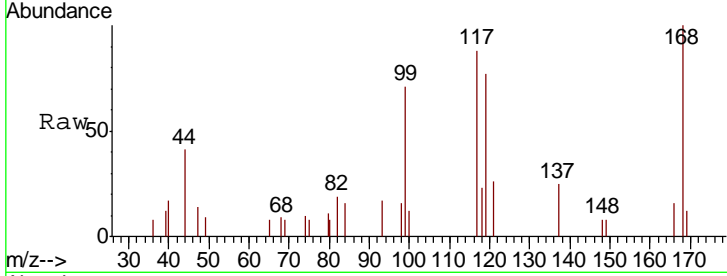




#38
 Carbon Tetrachloride
 Concen: 0.530 ug/l
 RT: 5.77 min Scan# 758
 Delta R.T. -0.01 min
 Lab File: VX005170.D
 Acq: 09 Oct 2018 20:16

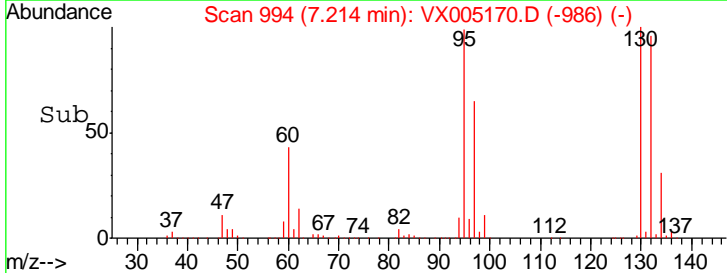
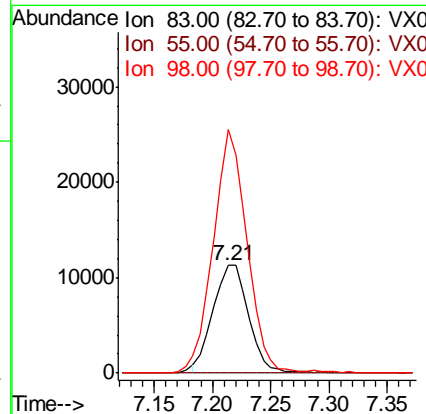
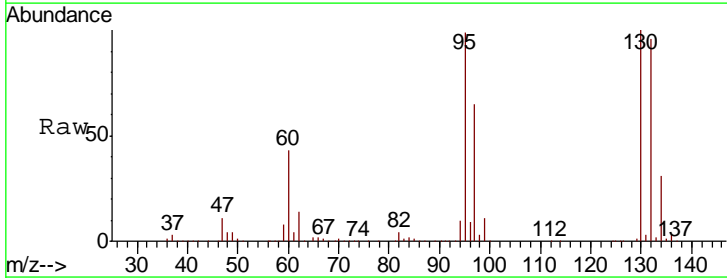
Instrument :
 MSVOA_X
 ClientSampleId :
 RE-120D1-20181002

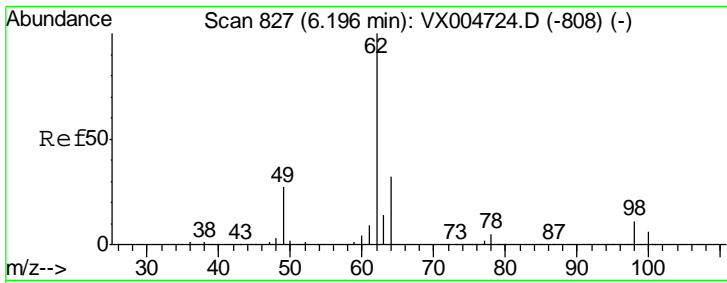
Tgt Ion	Resp	Lower	Upper
117	1854		
119	87.6	75.2	112.8
121	30.0	22.5	33.7



#39
 Methylcyclohexane
 Concen: 7.077 ug/l
 RT: 7.21 min Scan# 994
 Delta R.T. -0.25 min
 Lab File: VX005170.D
 Acq: 09 Oct 2018 20:16

Tgt Ion	Resp	Lower	Upper
83	24037		
55	0.0	81.1	121.7#
98	224.7	37.3	55.9#

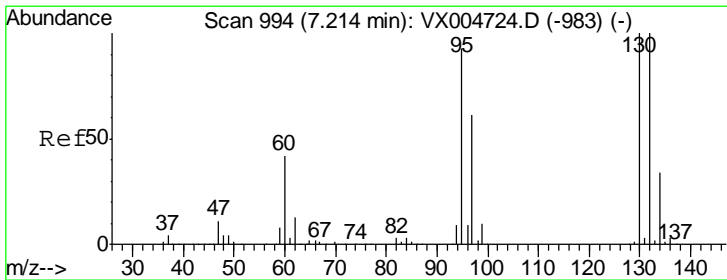
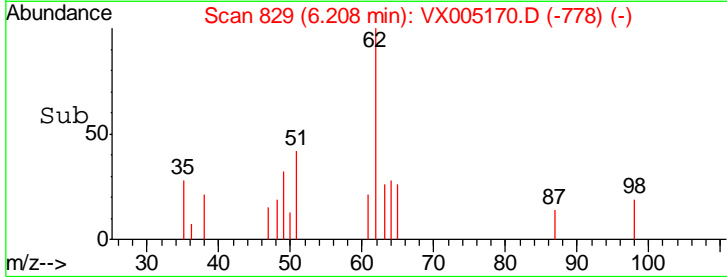
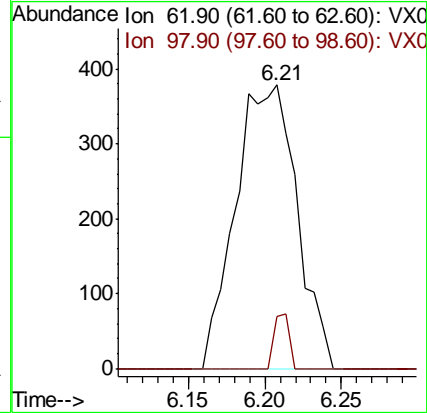
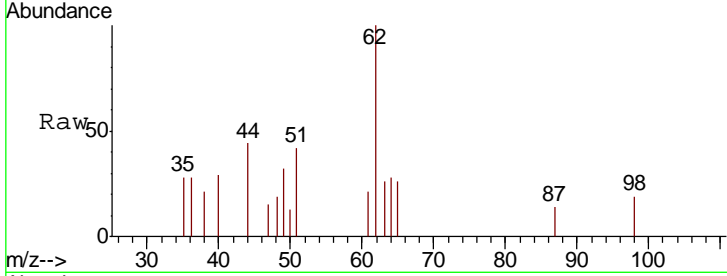




#42
 1,2-Dichloroethane
 Concen: 0.287 ug/l
 RT: 6.21 min Scan# 829
 Delta R.T. 0.01 min
 Lab File: VX005170.D
 Acq: 09 Oct 2018 20:16

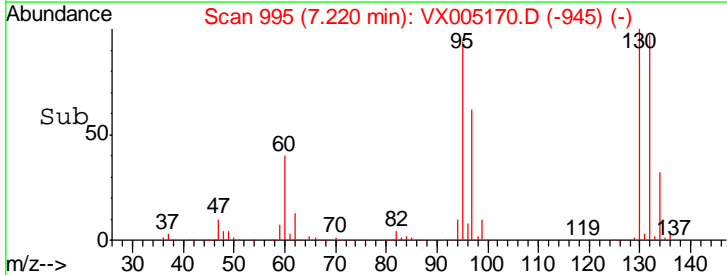
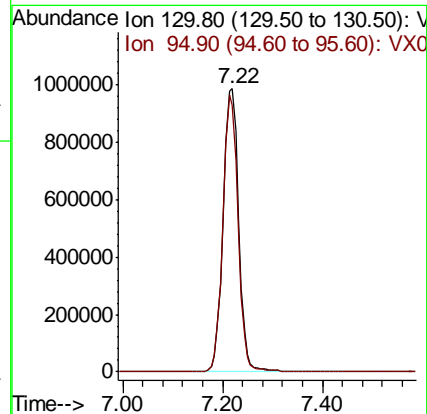
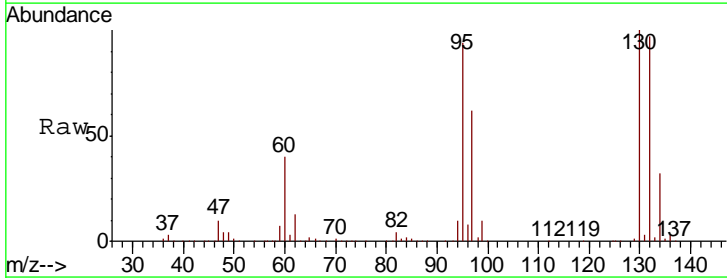
Instrument :
 MSVOA_X
 ClientSampled :
 RE-120D1-20181002

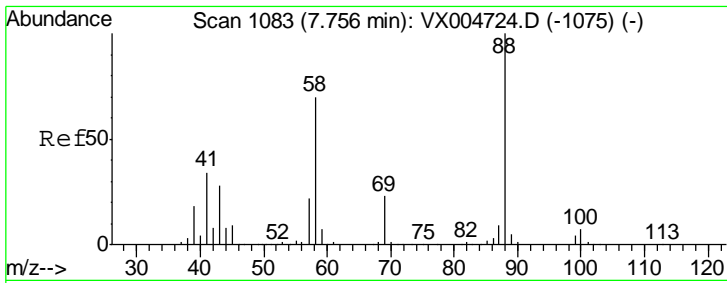
Tgt Ion	Resp	Lower	Upper
62	1056		
98	4.9	0.0	20.2



#44
 Trichloroethene
 Concen: 831.610 ug/l
 RT: 7.22 min Scan# 995
 Delta R.T. 0.01 min
 Lab File: VX005170.D
 Acq: 09 Oct 2018 20:16

Tgt Ion	Resp	Lower	Upper
130	2128981		
95	94.3	0.0	186.8

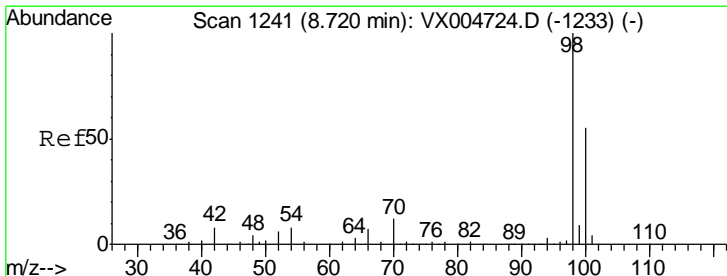
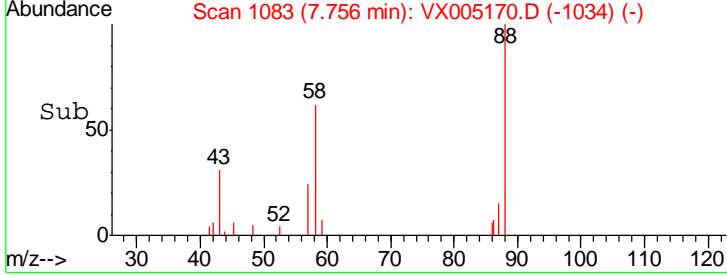
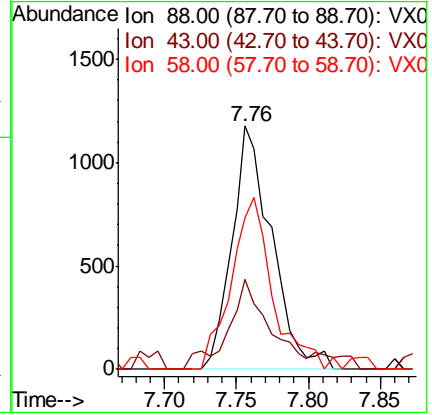
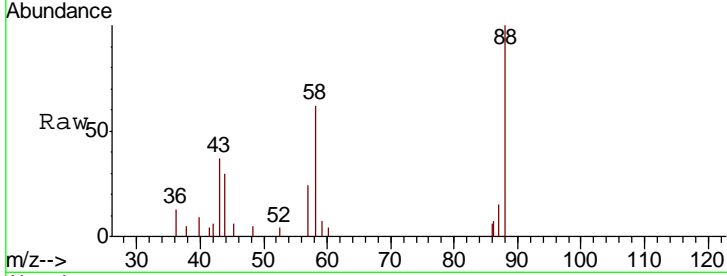




#49
 1,4-Dioxane
 Concen: 31.504 ug/l
 RT: 7.76 min Scan# 1083
 Delta R.T. -0.00 min
 Lab File: VX005170.D
 Acq: 09 Oct 2018 20:16

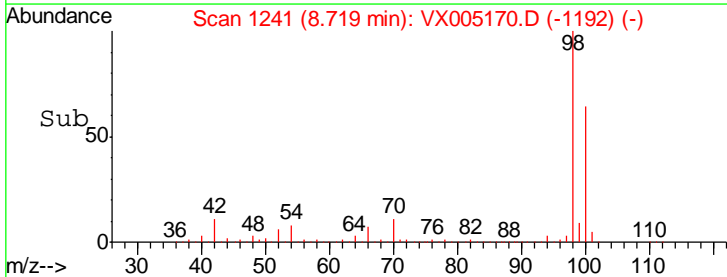
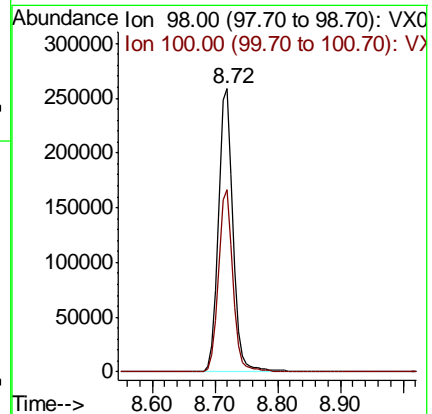
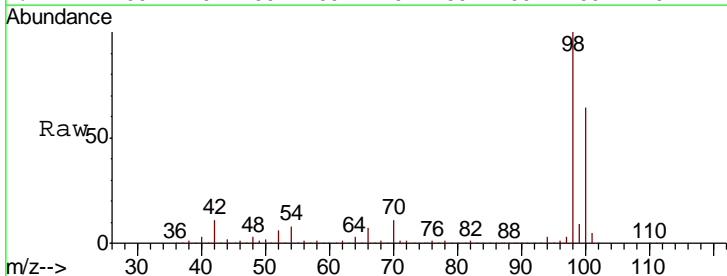
Instrument : MSVOA_X
 ClientSampled : RE-120D1-20181002

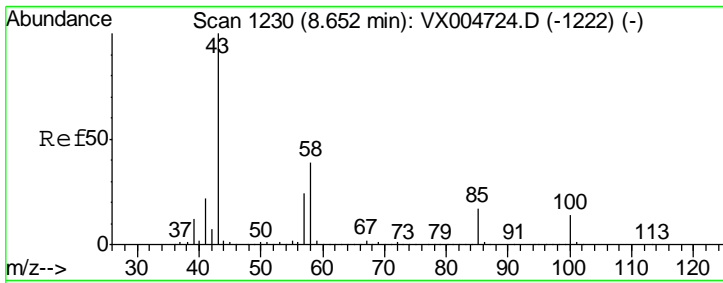
Tgt Ion	Resp	Lower	Upper
88	2264		
43	38.7	25.1	37.7#
58	74.2	56.2	84.2



#50
 Toluene-d8
 Concen: 51.375 ug/l
 RT: 8.72 min Scan# 1241
 Delta R.T. -0.00 min
 Lab File: VX005170.D
 Acq: 09 Oct 2018 20:16

Tgt Ion	Resp	Lower	Upper
98	416410		
100	63.6	51.9	77.9

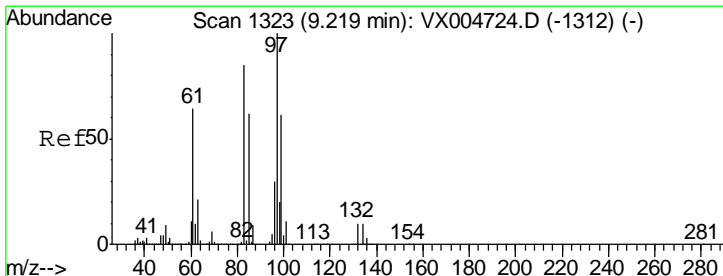
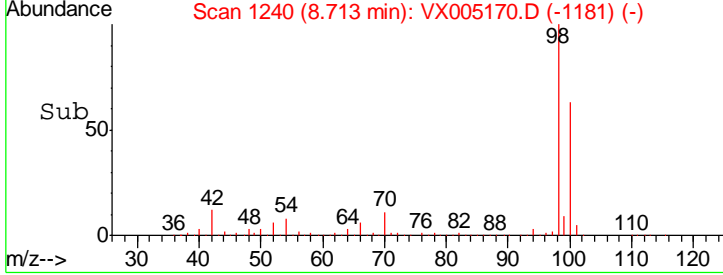
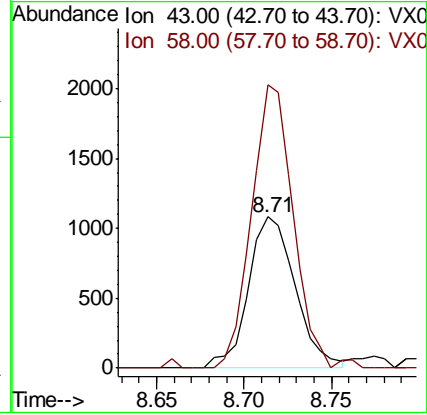
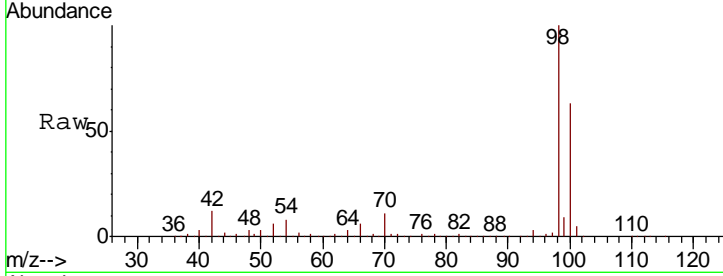




#51
 4-Methyl-2-Pentanone
 Concen: 0.504 ug/l
 RT: 8.71 min Scan# 1240
 Delta R.T. 0.06 min
 Lab File: VX005170.D
 Acq: 09 Oct 2018 20:16

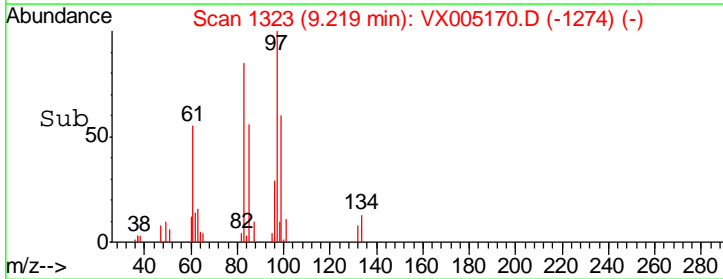
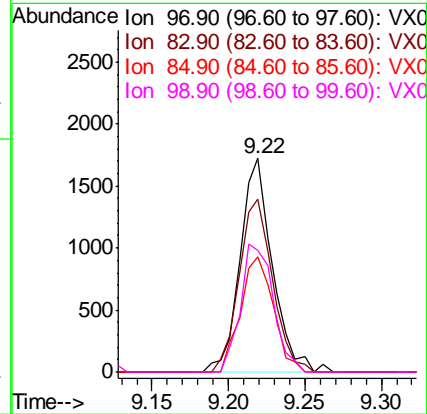
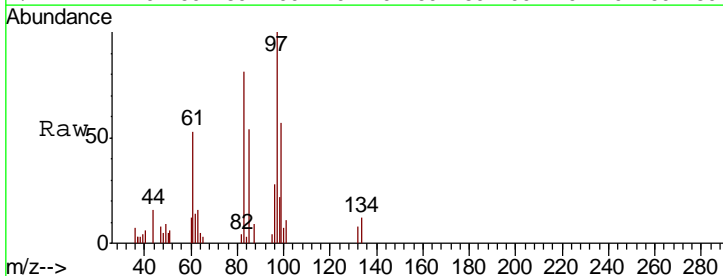
Instrument :
 MSVOA_X
 ClientSampled :
 RE-120D1-20181002

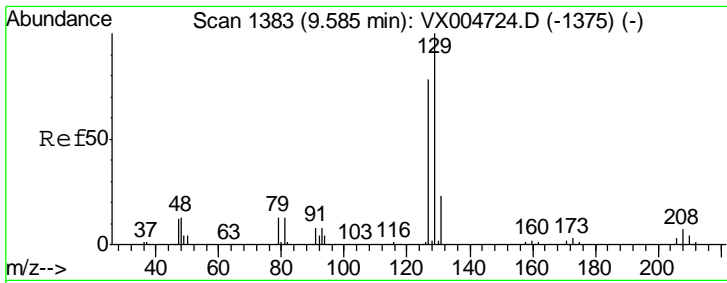
Tgt Ion	43	58	Resp	2024	Lower	Upper
43	100					
58	166.8		30.5	45.7#		



#55
 1,1,2-Trichloroethane
 Concen: 1.005 ug/l
 RT: 9.22 min Scan# 1323
 Delta R.T. -0.00 min
 Lab File: VX005170.D
 Acq: 09 Oct 2018 20:16

Tgt Ion	97	Resp	2520	Lower	Upper
97	100				
83	81.0		68.2	102.2	
85	53.7		49.9	74.9	
99	57.2		48.9	73.3	

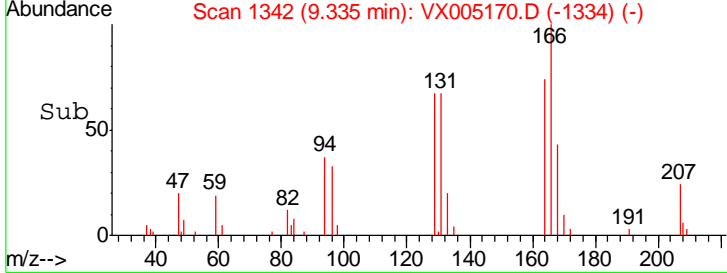
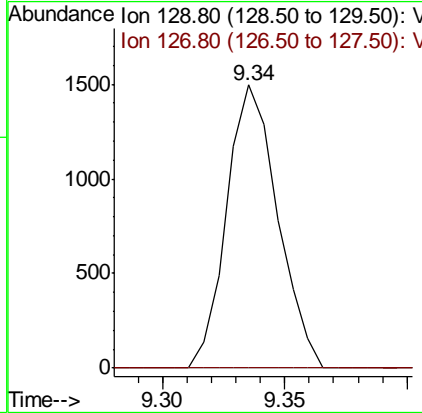
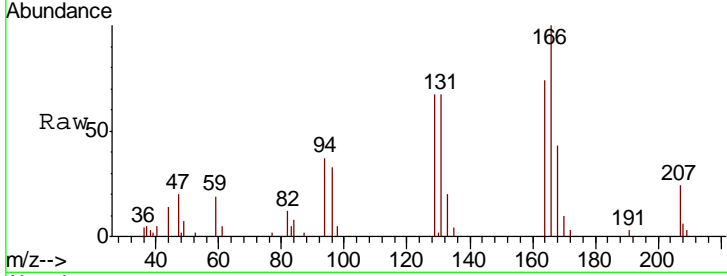




#60
 Dibromochloromethane
 Concen: 0.868 ug/l
 RT: 9.34 min Scan# 1342
 Delta R.T. -0.25 min
 Lab File: VX005170.D
 Acq: 09 Oct 2018 20:16

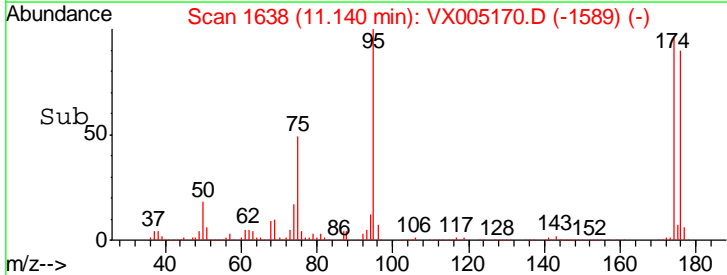
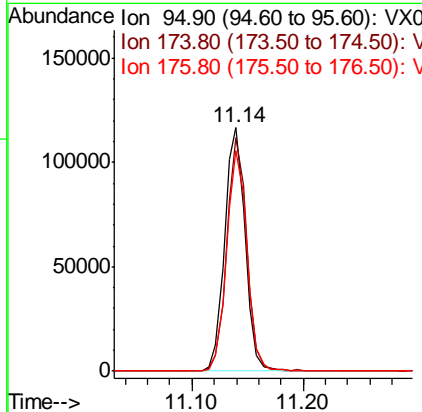
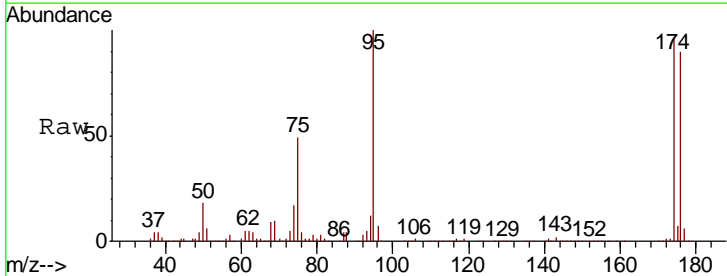
Instrument :
 MSVOA_X
ClientSampled :
 RE-120D1-20181002

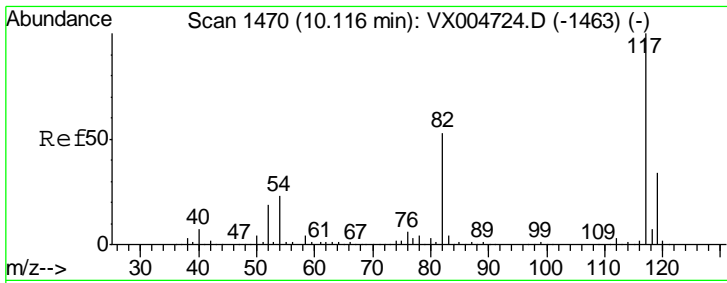
Tgt Ion	Resp	Lower	Upper
129	2177		
127	0.0	39.1	117.2#



#62
 4-Bromofluorobenzene
 Concen: 50.675 ug/l
 RT: 11.14 min Scan# 1638
 Delta R.T. -0.00 min
 Lab File: VX005170.D
 Acq: 09 Oct 2018 20:16

Tgt Ion	Resp	Lower	Upper
95	147970		
174	93.8	0.0	185.0
176	90.3	0.0	180.2

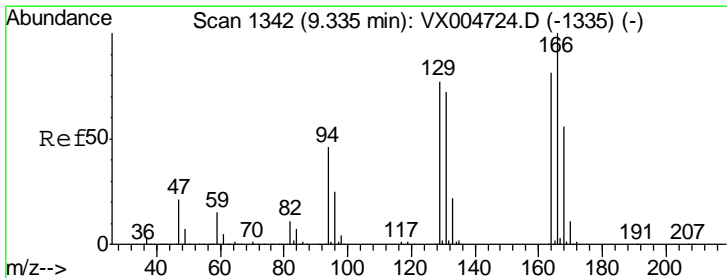
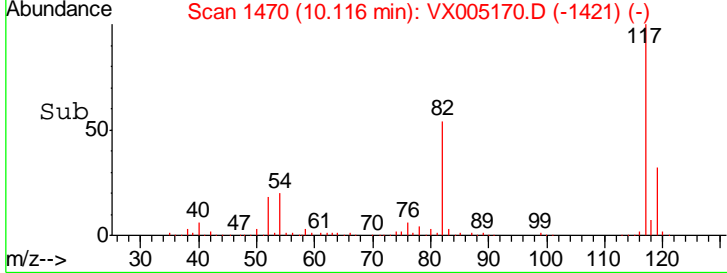
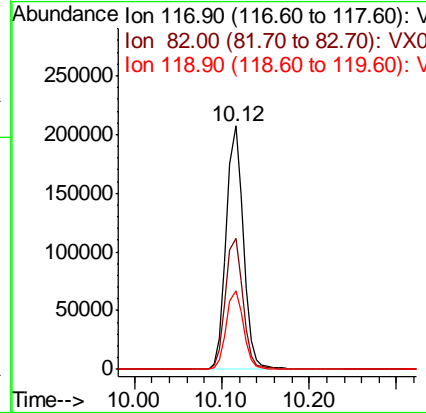
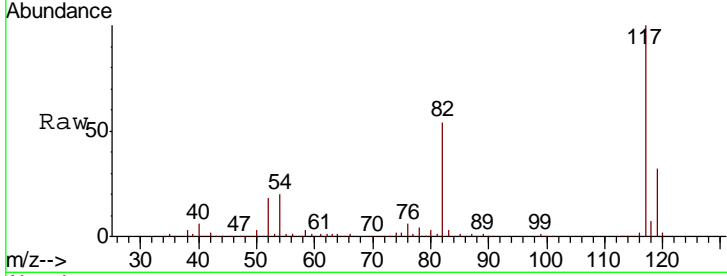




#63
 Chlorobenzene-d5
 Concen: 50.000 ug/l
 RT: 10.12 min Scan# 1470
 Delta R.T. -0.00 min
 Lab File: VX005170.D
 Acq: 09 Oct 2018 20:16

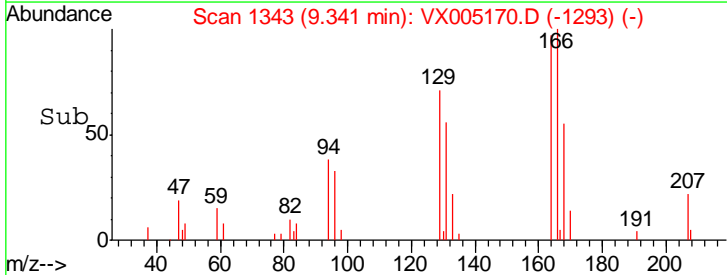
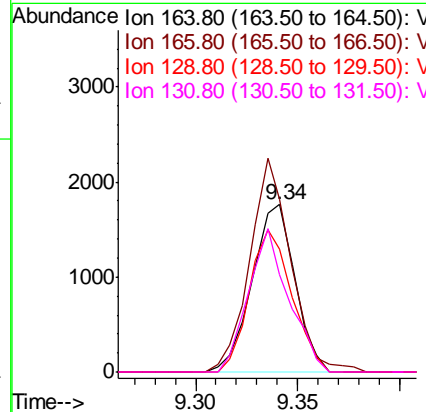
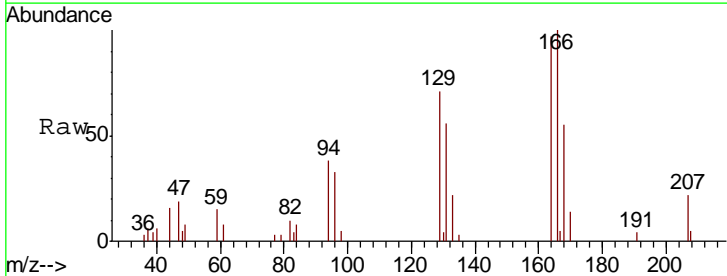
Instrument :
 MSVOA_X
 ClientSampleId :
 RE-120D1-20181002

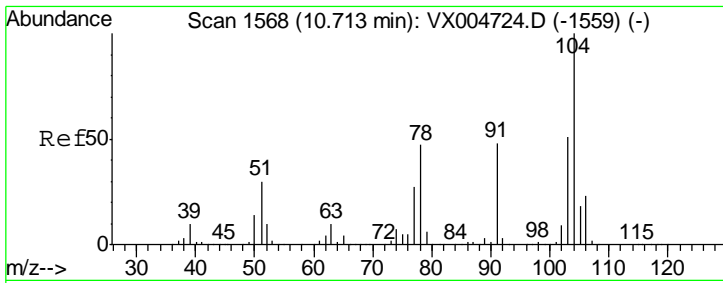
Tgt Ion	Resp	Lower	Upper
117	281520		
82	53.8	42.2	63.4
119	32.3	27.4	41.0



#64
 Tetrachloroethene
 Concen: 0.930 ug/l
 RT: 9.34 min Scan# 1343
 Delta R.T. 0.01 min
 Lab File: VX005170.D
 Acq: 09 Oct 2018 20:16

Tgt Ion	Resp	Lower	Upper
164	2578		
166	103.4	98.4	147.6
129	73.2	76.1	114.1#
131	58.0	71.0	106.4#

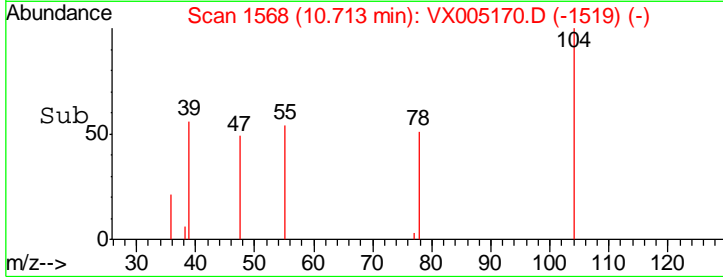
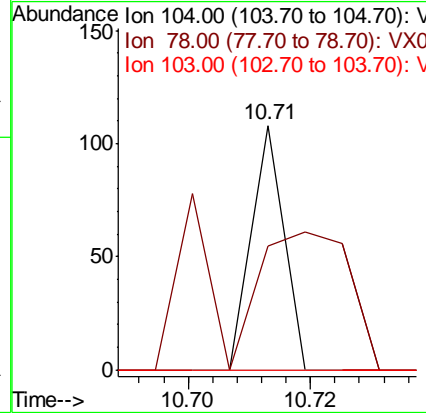
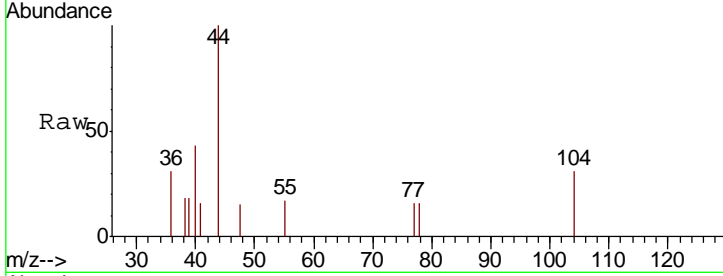




#70
 Styrene
 Concen: 2.145 ug/l
 RT: 10.71 min Scan# 1568
 Delta R.T. -0.00 min
 Lab File: VX005170.D
 Acq: 09 Oct 2018 20:16

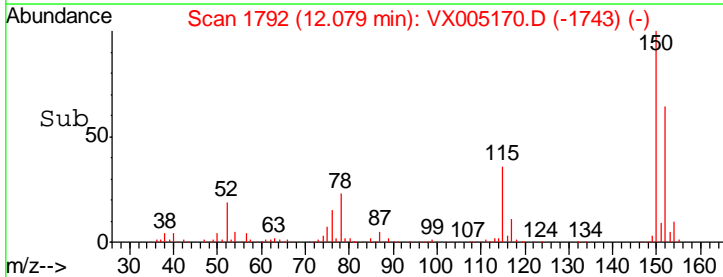
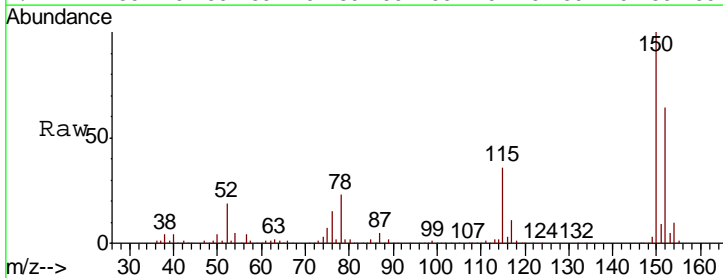
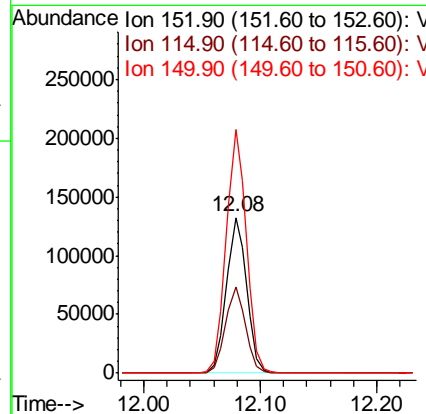
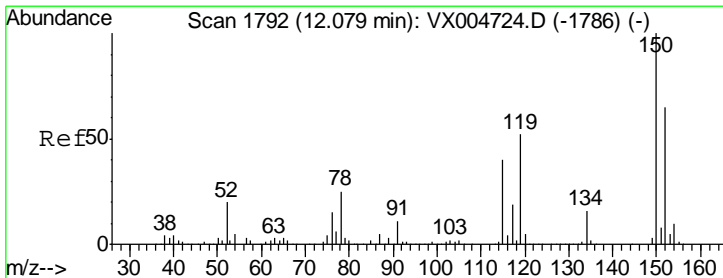
Instrument :
 MSVOA_X
 ClientSampled :
 RE-120D1-20181002

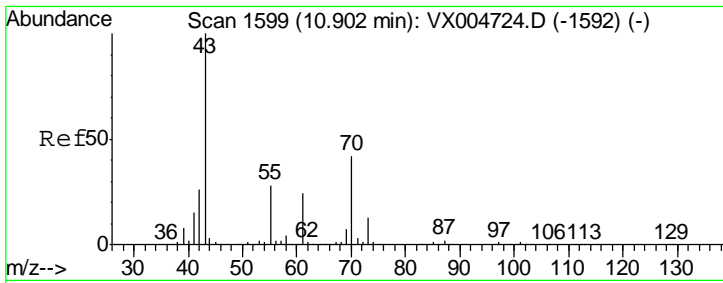
Tgt Ion	Resp	Lower	Upper
104	100		
78	157.5	40.0	60.0#
103	0.0	44.3	66.5#



#72
 1,4-Dichlorobenzene-d4
 Concen: 50.000 ug/l
 RT: 12.08 min Scan# 1792
 Delta R.T. -0.00 min
 Lab File: VX005170.D
 Acq: 09 Oct 2018 20:16

Tgt Ion	Resp	Lower	Upper
152	100		
115	54.9	40.2	120.6
150	156.0	0.0	351.0

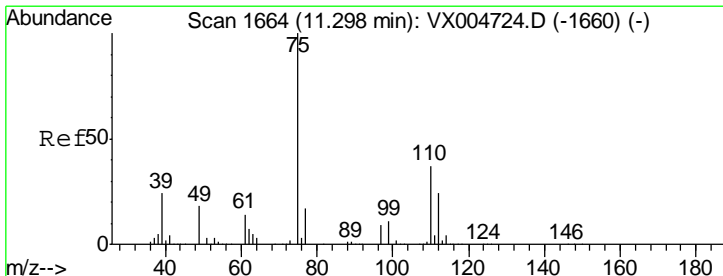
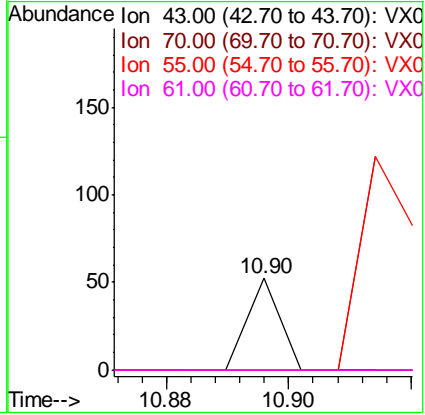
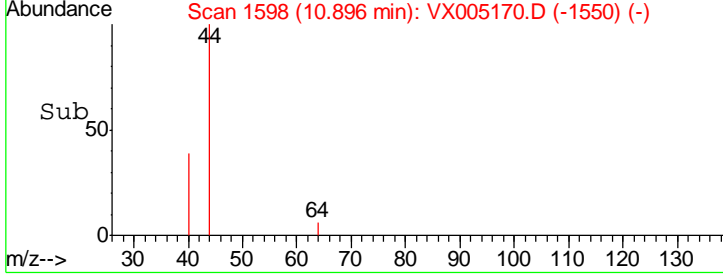
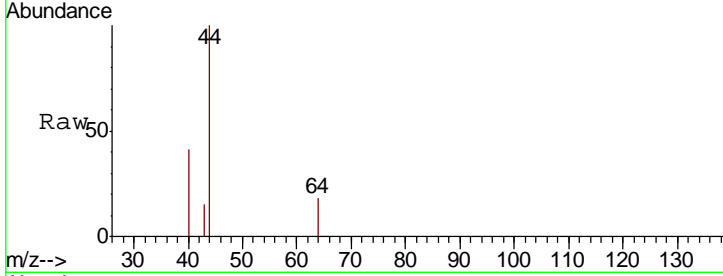




#74
 N-amyl acetate
 Concen: 1.751 ug/l
 RT: 10.90 min Scan# 1598
 Delta R.T. -0.01 min
 Lab File: VX005170.D
 Acq: 09 Oct 2018 20:16

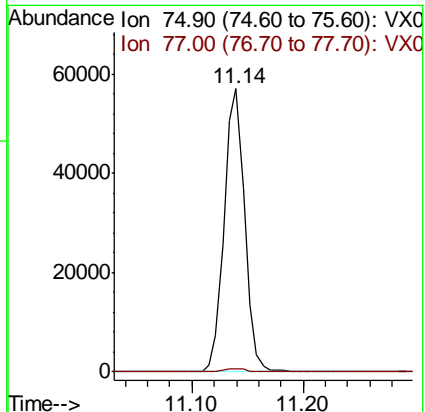
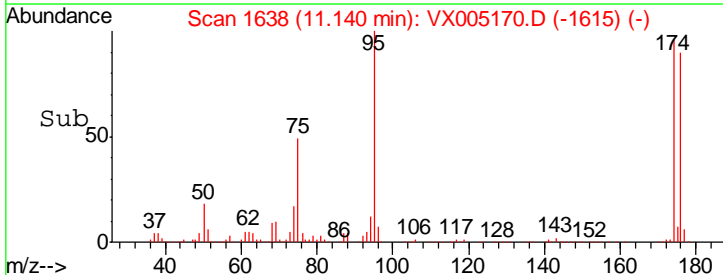
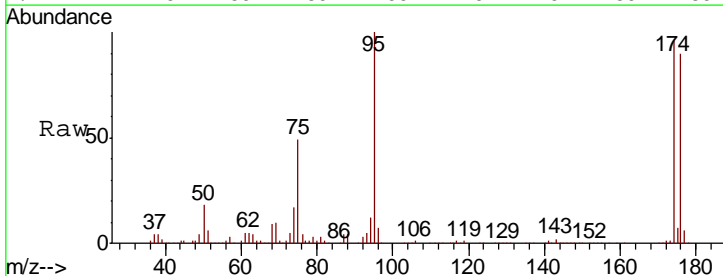
Instrument : MSVOA_X
 ClientSampled : RE-120D1-20181002

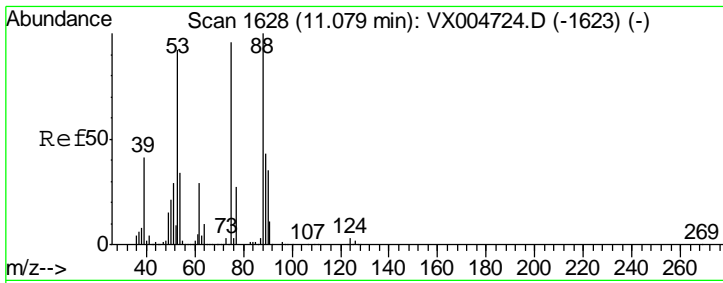
Tgt Ion	Resp	Lower	Upper
43	100		
70	0.0	32.6	48.8#
55	0.0	21.6	32.4#
61	0.0	19.1	28.7#



#76
 1,2,3-Trichloropropane
 Concen: 20.531 ug/l
 RT: 11.14 min Scan# 1638
 Delta R.T. -0.16 min
 Lab File: VX005170.D
 Acq: 09 Oct 2018 20:16

Tgt Ion	Resp	Lower	Upper
75	100		
77	1.3	21.4	64.3#

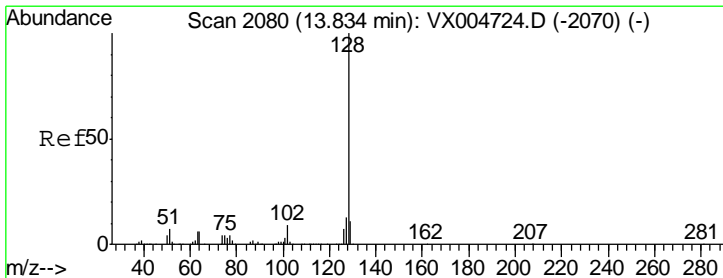
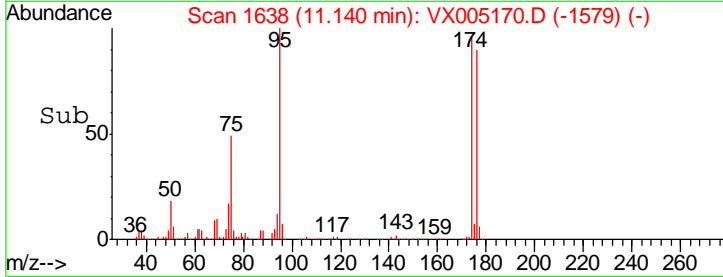
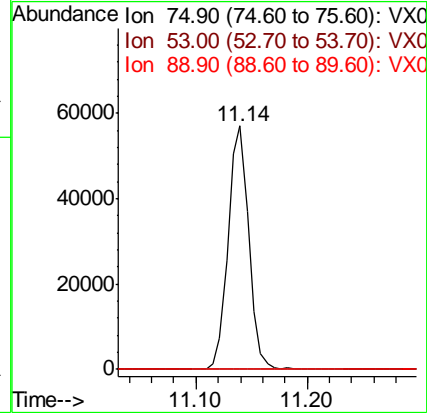
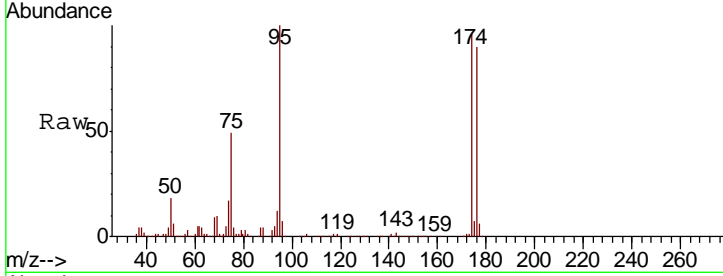




#81
 trans-1,4-Dichloro-2-butene
 Concen: 55.757 ug/l
 RT: 11.14 min Scan# 1638
 Delta R.T. 0.06 min
 Lab File: VX005170.D
 Acq: 09 Oct 2018 20:16

Instrument :
 MSVOA_X
 ClientSampleId :
 RE-120D1-20181002

Tgt Ion	Resp	Lower	Upper
75	100		
53	0.3	80.2	120.4#
89	0.0	37.1	55.7#



#95
 Naphthalene
 Concen: 0.756 ug/l
 RT: 13.83 min Scan# 2080
 Delta R.T. -0.00 min
 Lab File: VX005170.D
 Acq: 09 Oct 2018 20:16

Tgt Ion	Resp	Lower	Upper
128	100		
127	14.5	10.4	15.6
129	0.0	8.7	13.1#

