

Data Path : Z:\VOASRV\HPCHEM1\MSVOA X\DATA\VX100918\
 Data File : VX005174.D
 Acq On : 09 Oct 2018 22:04
 Operator : JC/MD
 Sample : J5284-13
 Misc : 5.0mL/MSVOA X/WATER
 ALS Vial : 20 Sample Multiplier: 1

Instrument :
 MSVOA_X
 ClientSampleId :
 RE-104D2-20181003

Integration Parameters: RTEINT.P
 Integrator: RTE
 Smoothing : ON Filtering: 5
 Sampling : 1 Min Area: 3 % of largest Peak
 Start Thrs: 0.2 Max Peaks: 100
 Stop Thrs : 0 Peak Location: TOP

If leading or trailing edge < 100 prefer < Baseline drop else tangent >
 Peak separation: 5

Method : Z:\VOASRV\HPCHEM1\MSVOA_X\METHOD\82X092618W.M
 Title : SW846 8260

Signal : TIC

peak #	R.T. min	first scan	max scan	last scan	PK TY	peak height	corr. area	corr. % max.	% of total
1	1.636	67	79	83	rBV4	12061	31329	2.87%	0.500%
2	4.598	553	565	575	rBV	47819	130277	11.95%	2.081%
3	5.214	655	666	675	rBV3	6401	20933	1.92%	0.334%
4	5.501	700	713	725	rBV	139667	396725	36.39%	6.337%
5	5.665	729	740	753	rBV	172109	496102	45.51%	7.925%
6	6.068	792	806	822	rBV	144514	383168	35.15%	6.121%
7	6.860	925	936	962	rBV	277039	672401	61.68%	10.741%
8	7.214	985	994	1004	rBV	211396	455310	41.77%	7.273%
9	8.720	1233	1241	1264	rBV	662356	1090162	100.00%	17.415%
10	10.116	1463	1470	1488	rBV	612161	848078	77.79%	13.547%
11	11.140	1632	1638	1652	rBV	609177	778968	71.45%	12.443%
12	12.079	1786	1792	1803	rBV	801388	956611	87.75%	15.281%

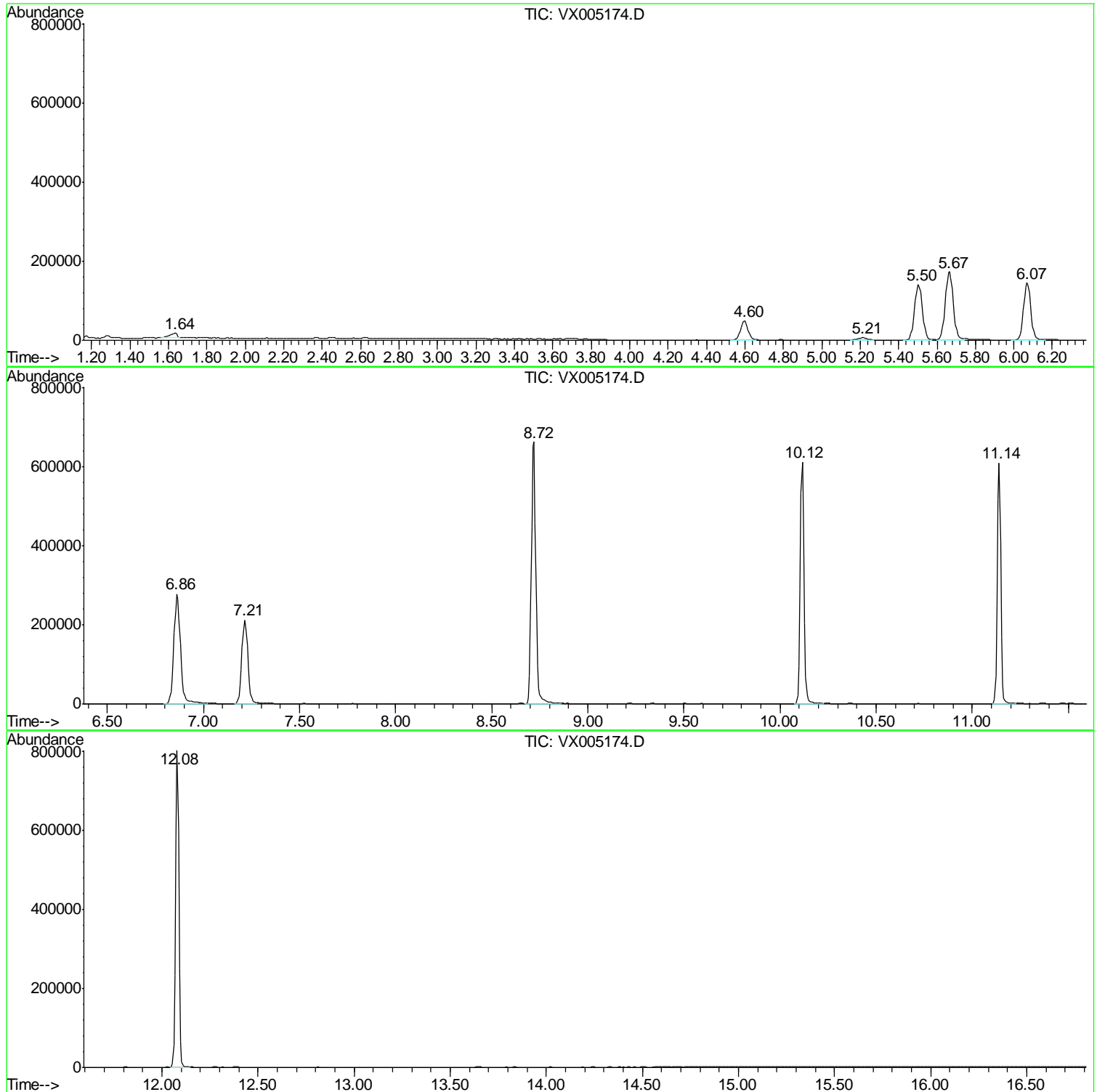
Sum of corrected areas: 6260064

Data Path : Z:\VOASRV\HPCHEM1\MSVOA X\DATA\VX100918\
Data File : VX005174.D
Acq On : 09 Oct 2018 22:04
Operator : JC/MD
Sample : J5284-13
Misc : 5.0mL/MSVOA X/WATER
ALS Vial : 20 Sample Multiplier: 1

Instrument :
MSVOA_X
ClientSampled :
RE-104D2-20181003

Quant Method : Z:\VOASRV\HPCHEM1\MSVOA_X\METHOD\82X092618W.M
Quant Title : SW846 8260

TIC Library : C:\DATABASE\NIST11.L
TIC Integration Parameters: LSCINT.P



Data Path : Z:\VOASRV\HPCHEM1\MSVOA_X\DATA\VX100918\
Data File : VX005174.D
Acq On : 09 Oct 2018 22:04
Operator : JC/MD
Sample : J5284-13
Misc : 5.0mL/MSVOA_X/WATER
ALS Vial : 20 Sample Multiplier: 1

Instrument :
MSVOA_X
ClientSampleId :
RE-104D2-20181003

Quant Method : Z:\VOASRV\HPCHEM1\MSVOA_X\METHOD\82X092618W.M
Quant Title : SW846 8260

TIC Library : C:\DATABASE\NIST11.L
TIC Integration Parameters: LSCINT.P

No Library Search Compounds Detected

Data Path : Z:\VOASRV\HPCHEM1\MSVOA_X\DATA\VX100918\
Data File : VX005174.D
Acq On : 09 Oct 2018 22:04
Operator : JC/MD
Sample : J5284-13
Misc : 5.0mL/MSVOA_X/WATER
ALS Vial : 20 Sample Multiplier: 1

Instrument :
MSVOA_X
ClientSampleId :
RE-104D2-20181003

Quant Method : Z:\VOASRV\HPCHEM1\MSVOA_X\METHOD\82X092618W.M
Quant Title : SW846 8260

TIC Library : C:\DATABASE\NIST11.L
TIC Integration Parameters: LSCINT.P

TIC Top Hit name	RT	EstConc	Units	Response	--Internal Standard--			
					#	RT	Resp	Conc
