

Data Path : Z:\VOASRV\HPCHEM1\MSVOA X\DATA\WX100919\
 Data File : VX012935.D
 Acq On : 09 Oct 2019 12:16
 Operator : JC/SP
 Sample : K5214-04
 Misc : 5.0mL/MSVOA X/WATER
 ALS Vial : 8 Sample Multiplier: 1

Instrument :
 MSVOA_X
 ClientSampleId :

Quant Time: Oct 10 01:35:55 2019
 Quant Method : Z:\VOASRV\HPCHEM1\MSVOA_X\METHOD\82X100819W.M
 Quant Title : SW846 8260
 QLast Update : Wed Oct 09 01:51:23 2019
 Response via : Initial Calibration

Internal Standards	R.T.	QIon	Response	Conc	Units	Dev(Min)
1) Pentafluorobenzene	5.65	168	180328	50.00	ug/l	0.00
34) 1,4-Difluorobenzene	6.85	114	303862	50.00	ug/l	0.00
63) Chlorobenzene-d5	10.11	117	257183	50.00	ug/l	0.00
72) 1,4-Dichlorobenzene-d4	12.07	152	100051	50.00	ug/l	0.00

System Monitoring Compounds

33) 1,2-Dichloroethane-d4	6.05	65	116763	51.81	ug/l	0.00
Spiked Amount	50.000		Recovery	= 103.62%		
35) Dibromofluoromethane	5.49	113	90848	52.09	ug/l	0.00
Spiked Amount	50.000		Recovery	= 104.18%		
50) Toluene-d8	8.71	98	354750	52.15	ug/l	0.00
Spiked Amount	50.000		Recovery	= 104.30%		
62) 4-Bromofluorobenzene	11.14	95	122180	46.23	ug/l	0.00
Spiked Amount	50.000		Recovery	= 92.46%		

Target Compounds

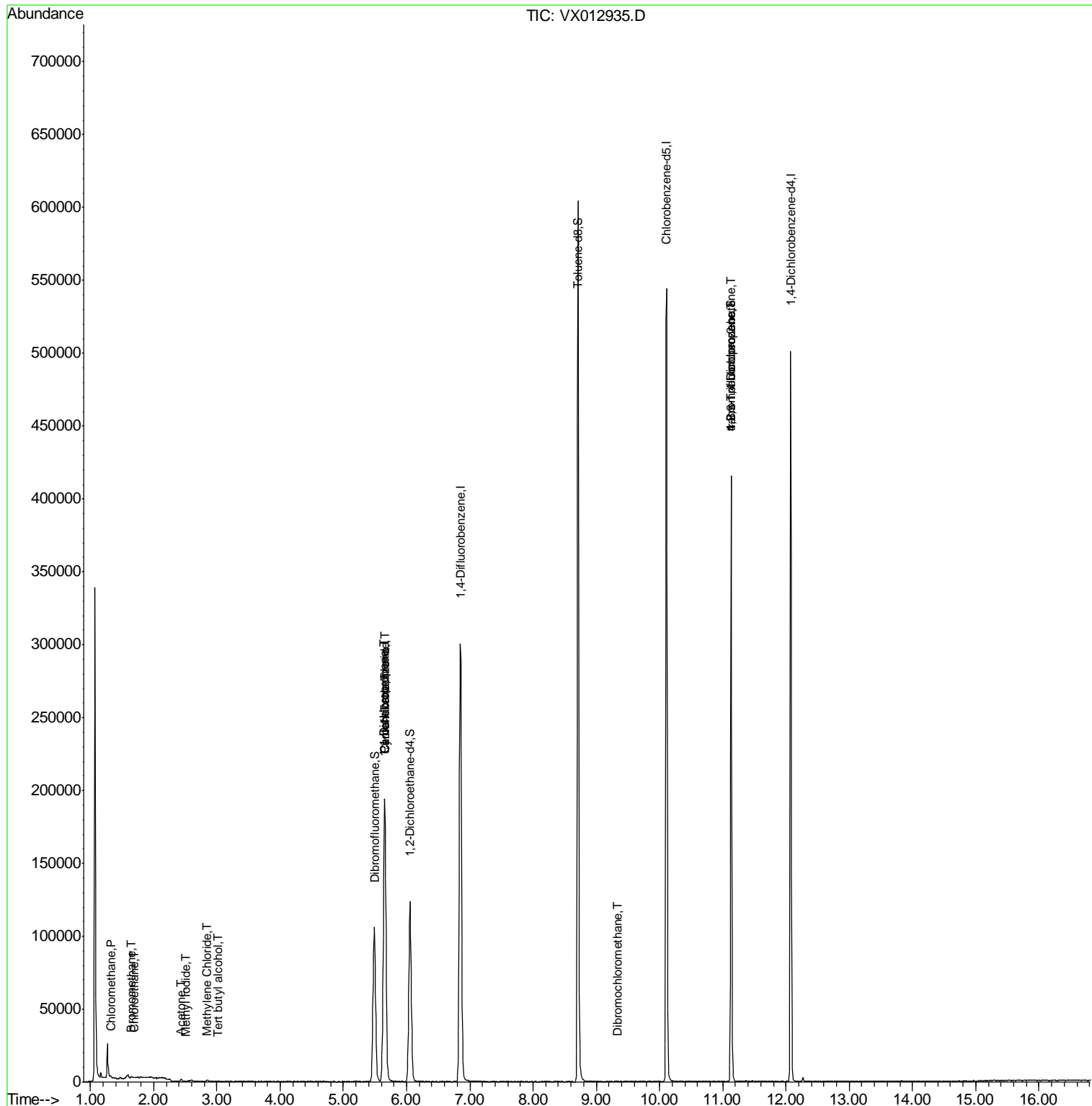
						Qvalue
3) Chloromethane	1.32	50	427	0.213	ug/l	92
5) Bromomethane	1.64	94	334	0.389	ug/l #	67
6) Chloroethane	1.69	64	257	0.570	ug/l #	43
10) Methyl Iodide	2.51	142	131	5.139	ug/l #	40
11) Tert butyl alcohol	3.02	59	153	0.256	ug/l #	72
16) Acetone	2.43	43	1689	1.422	ug/l	97
20) Methylene Chloride	2.85	84	447	0.205	ug/l #	77
31) Cyclohexane	5.65	56	3928	1.201	ug/l #	6
36) 1,1-Dichloropropene	5.64	75	14800	5.540	ug/l #	50
38) Carbon Tetrachloride	5.65	117	18926	7.278	ug/l #	16
60) Dibromochloromethane	9.34	129	41	1.875	ug/l #	10
76) 1,2,3-Trichloropropane	11.13	75	59602	26.858	ug/l #	32
81) trans-1,4-Dichloro-2-buten	11.13	75	59602	67.508	ug/l #	10

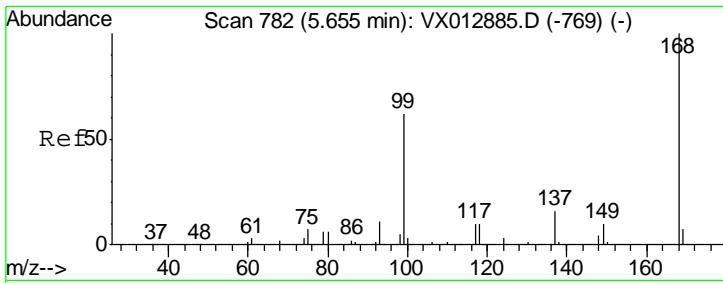
(#) = qualifier out of range (m) = manual integration (+) = signals summed

Data Path : Z:\VOASRV\HPCHEM1\MSVOA X\DATA\VX100919\
 Data File : VX012935.D
 Acq On : 09 Oct 2019 12:16
 Operator : JC/SP
 Sample : K5214-04
 Misc : 5.0mL/MSVOA X/WATER
 ALS Vial : 8 Sample Multiplier: 1

Instrument :
 MSVOA_X
 Client Sampled :

Quant Time: Oct 10 01:35:55 2019
 Quant Method : Z:\VOASRV\HPCHEM1\MSVOA_X\METHOD\82X100819W.M
 Quant Title : SW846 8260
 QLast Update : Wed Oct 09 01:51:23 2019
 Response via : Initial Calibration

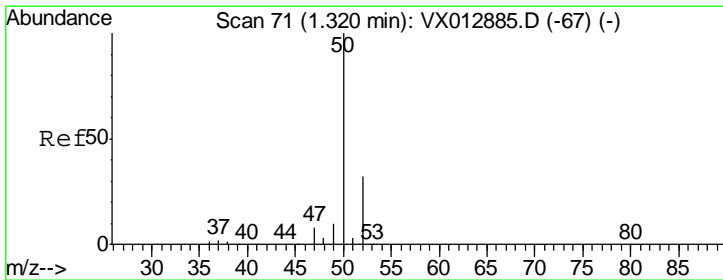
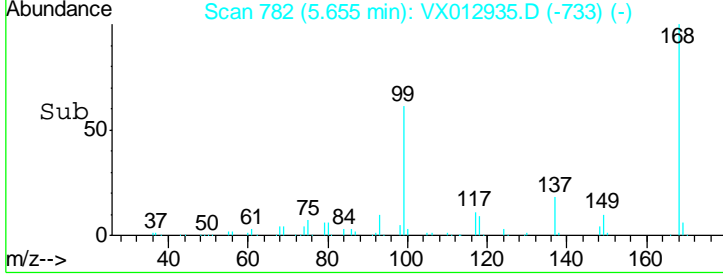
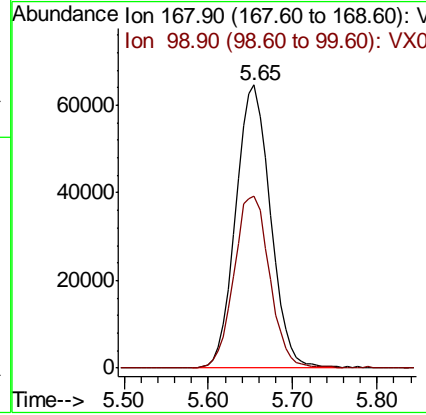
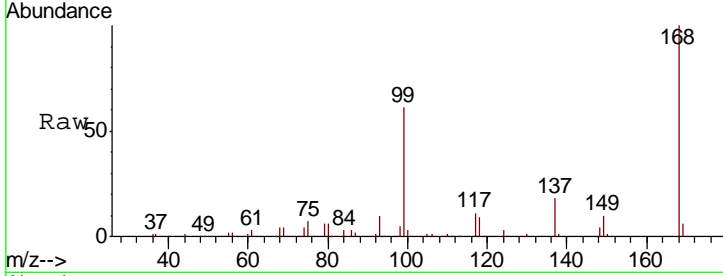




#1
 Pentafluorobenzene
 Concen: 50.000 ug/l
 RT: 5.65 min Scan# 782
 Delta R.T. 0.00 min
 Lab File: VX012935.D
 Acq: 09 Oct 2019 12:16

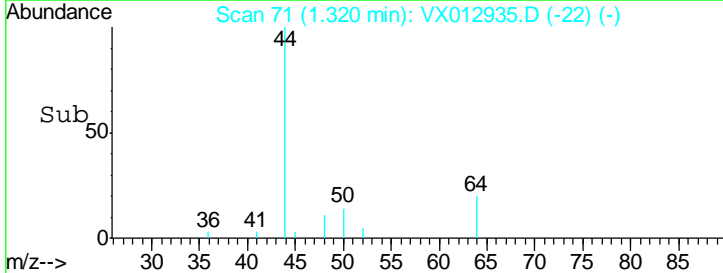
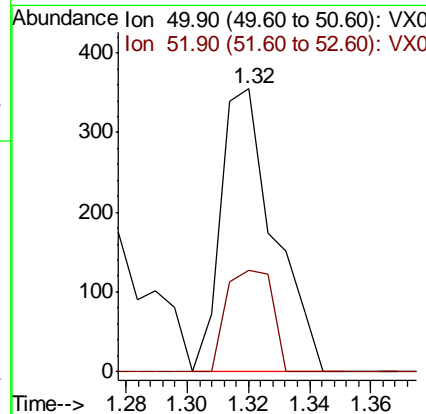
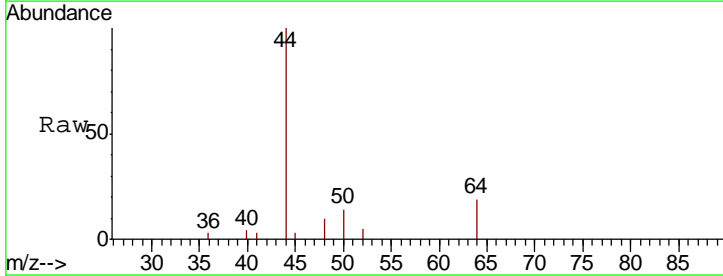
Instrument : MSVOA_X
 ClientSampled :

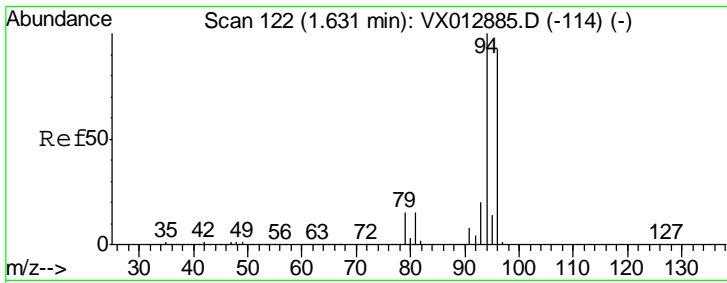
Tgt Ion: 168 Resp: 180328
 Ion Ratio Lower Upper
 168 100
 99 60.7 49.4 74.0



#3
 Chloromethane
 Concen: 0.213 ug/l
 RT: 1.32 min Scan# 71
 Delta R.T. 0.00 min
 Lab File: VX012935.D
 Acq: 09 Oct 2019 12:16

Tgt Ion: 50 Resp: 427
 Ion Ratio Lower Upper
 50 100
 52 35.8 25.2 37.8

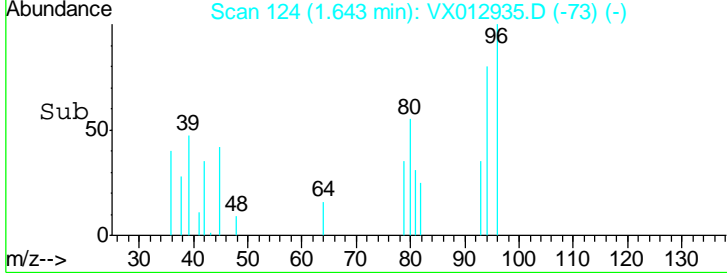
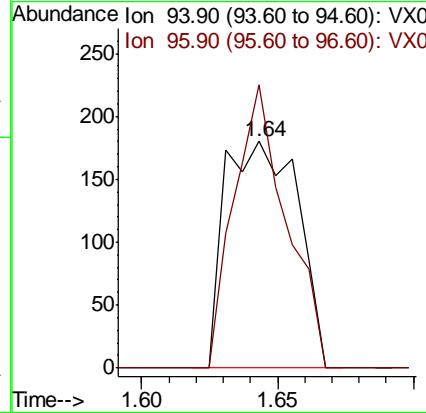
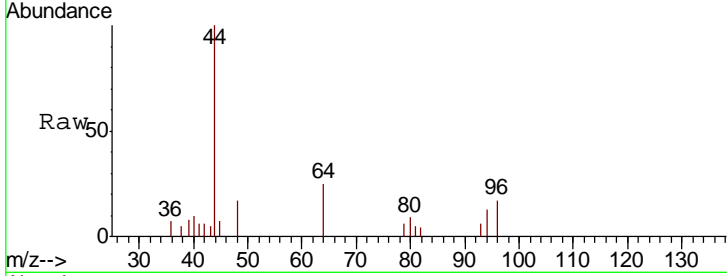




#5
 Bromomethane
 Concen: 0.389 ug/l
 RT: 1.64 min Scan# 124
 Delta R.T. 0.01 min
 Lab File: VX012935.D
 Acq: 09 Oct 2019 12:16

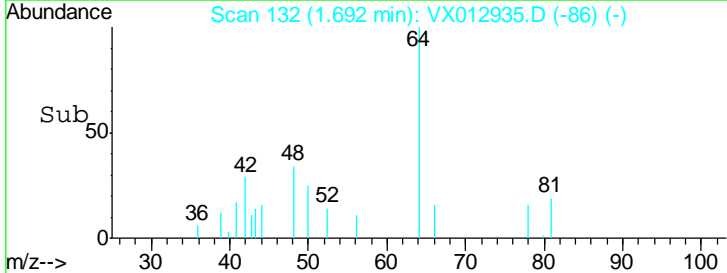
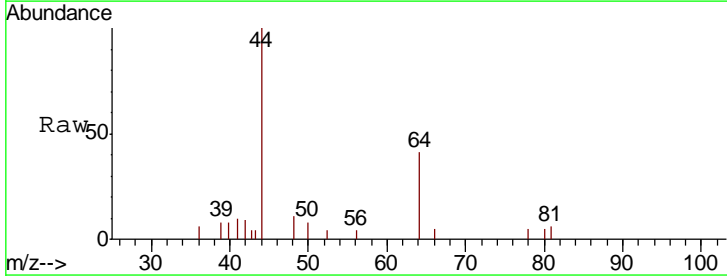
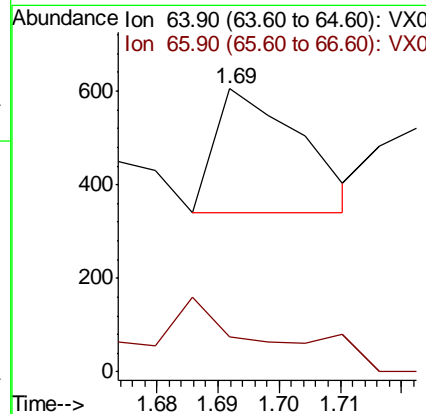
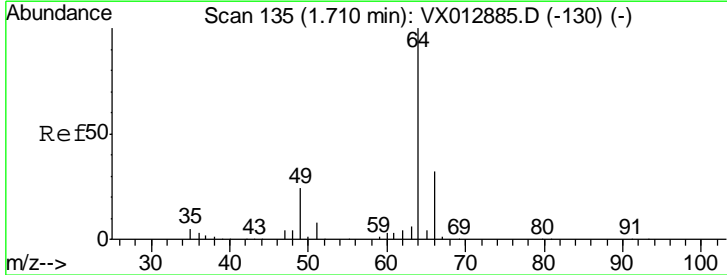
Instrument :
 MSVOA_X
 ClientSampled :

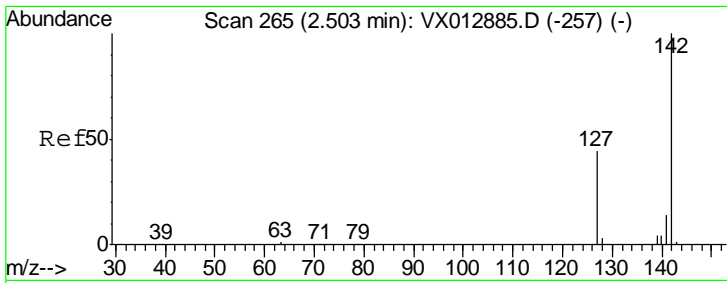
Tgt Ion: 94 Resp: 334
 Ion Ratio Lower Upper
 94 100
 96 125.0 74.7 112.1#



#6
 Chloroethane
 Concen: 0.570 ug/l
 RT: 1.69 min Scan# 132
 Delta R.T. -0.02 min
 Lab File: VX012935.D
 Acq: 09 Oct 2019 12:16

Tgt Ion: 64 Resp: 257
 Ion Ratio Lower Upper
 64 100
 66 0.0 25.6 38.4#

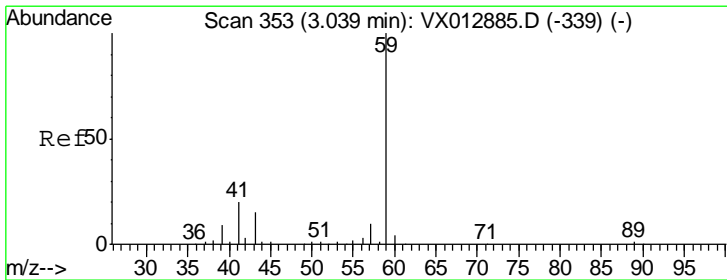
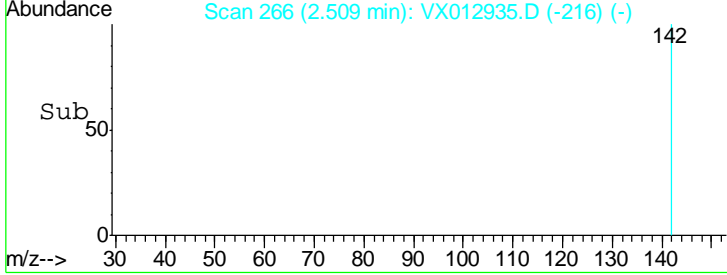
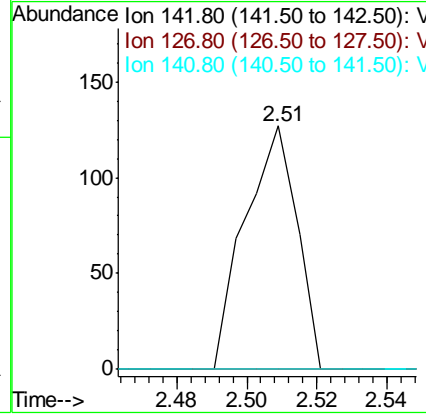
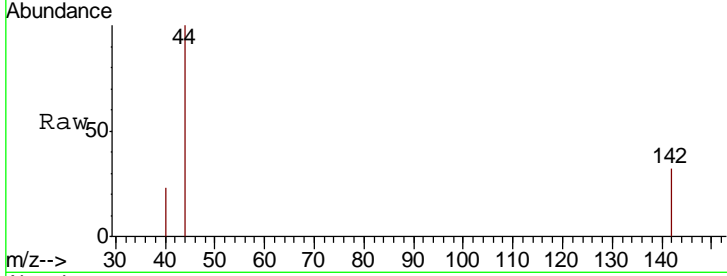




#10
 Methyl Iodide
 Concen: 5.139 ug/l
 RT: 2.51 min Scan# 266
 Delta R.T. 0.01 min
 Lab File: VX012935.D
 Acq: 09 Oct 2019 12:16

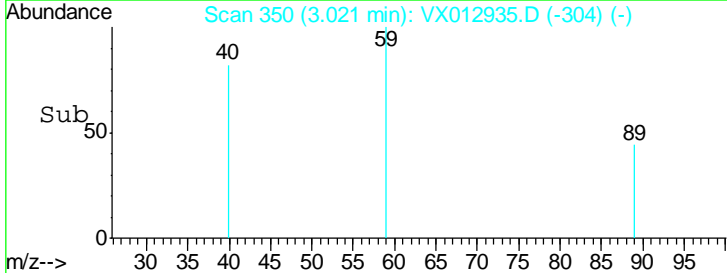
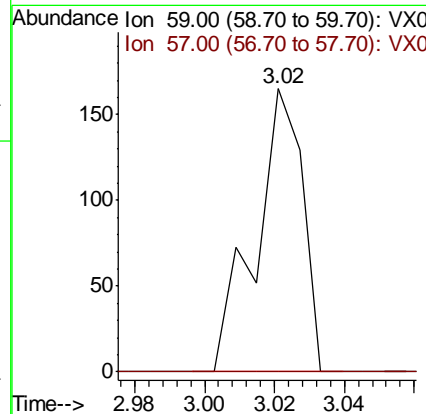
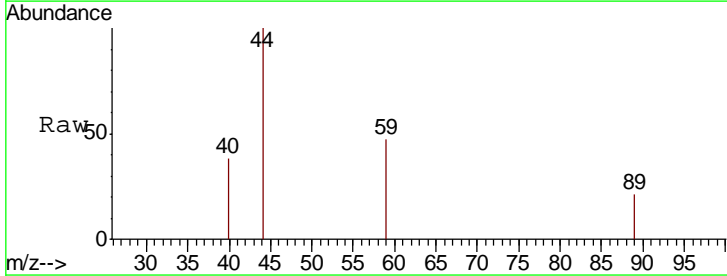
Instrument :
 MSVOA_X
 ClientSampled :

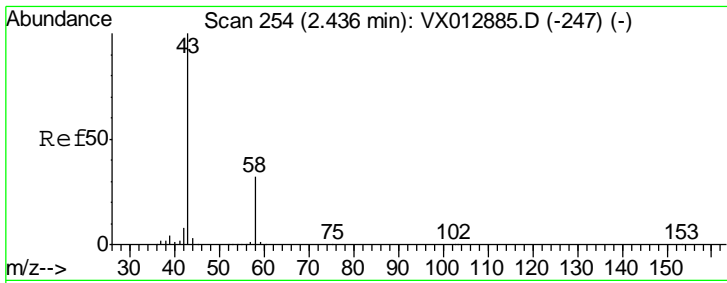
Tgt Ion	Resp	Lower	Upper
142	131		
127	0.0	34.9	52.3#
141	0.0	11.6	17.4#



#11
 Tert butyl alcohol
 Concen: 0.256 ug/l
 RT: 3.02 min Scan# 350
 Delta R.T. -0.02 min
 Lab File: VX012935.D
 Acq: 09 Oct 2019 12:16

Tgt Ion	Resp	Lower	Upper
59	153		
57	0.0	8.3	12.5#

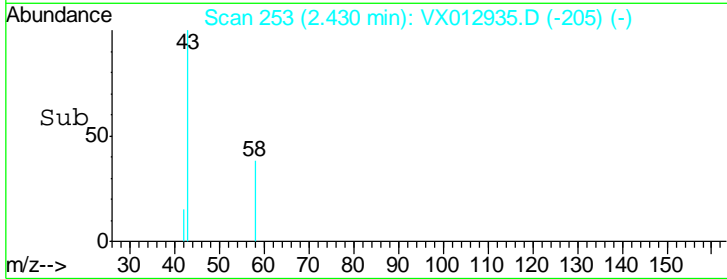
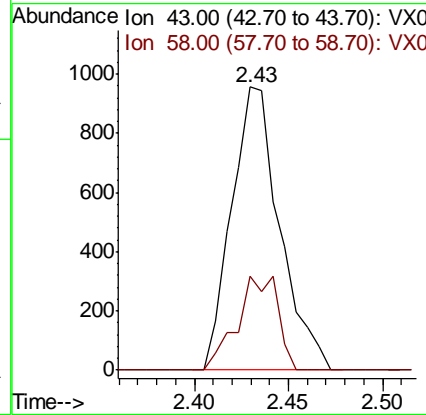
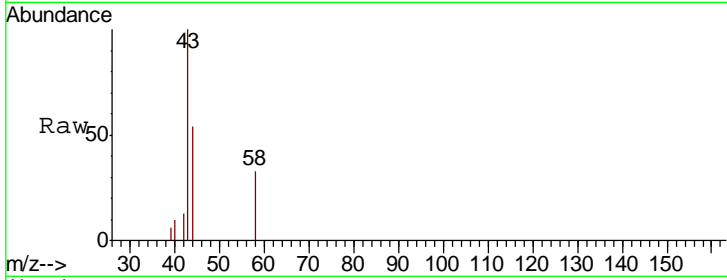




#16
 Acetone
 Concen: 1.422 ug/l
 RT: 2.43 min Scan# 253
 Delta R.T. -0.01 min
 Lab File: VX012935.D
 Acq: 09 Oct 2019 12:16

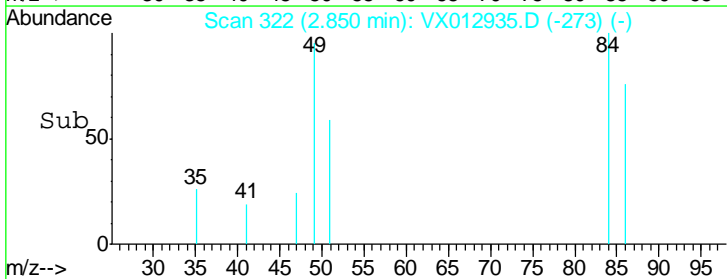
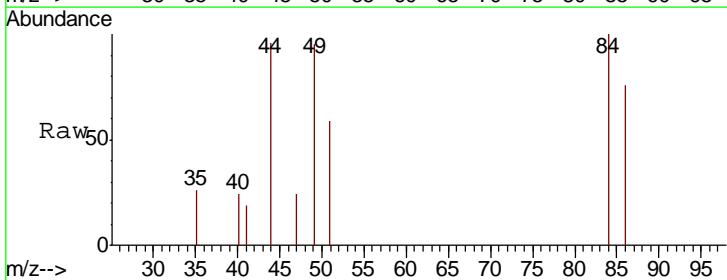
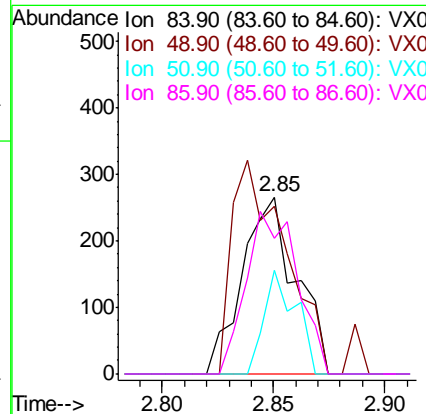
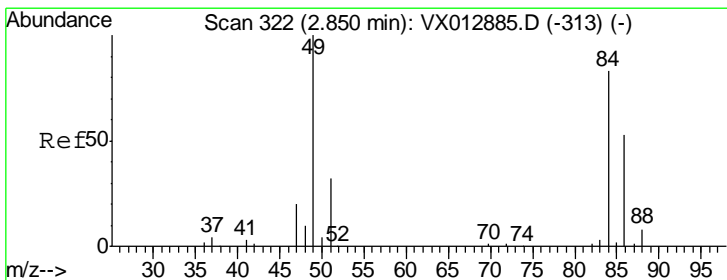
Instrument :
 MSVOA_X
ClientSampled :

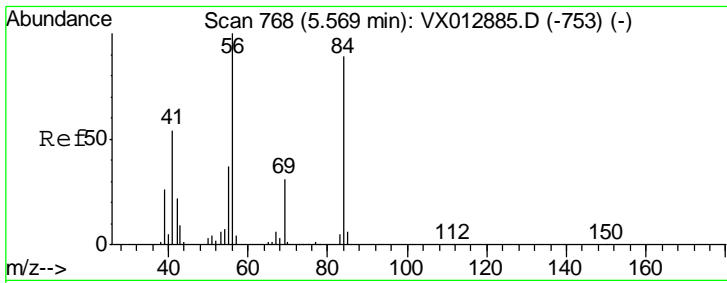
Tgt Ion	Resp	Lower	Upper
43	1689		
58	33.3	25.4	38.2



#20
 Methylene Chloride
 Concen: 0.205 ug/l
 RT: 2.85 min Scan# 322
 Delta R.T. 0.00 min
 Lab File: VX012935.D
 Acq: 09 Oct 2019 12:16

Tgt Ion	Resp	Lower	Upper
84	447		
49	94.7	96.6	144.8#
51	58.6	30.7	46.1#
86	76.3	51.0	76.6

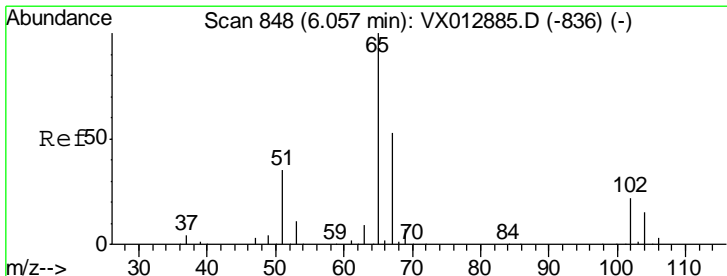
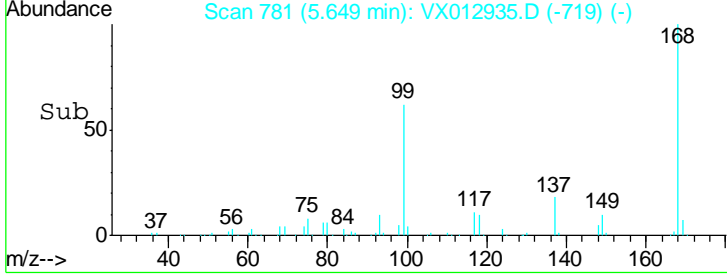
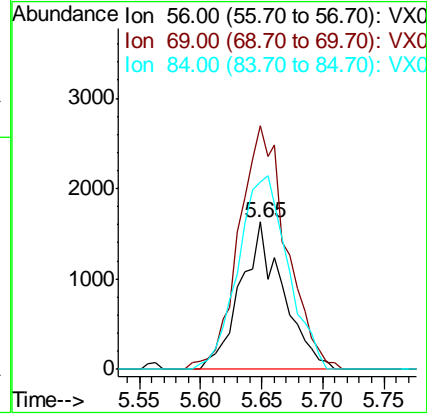
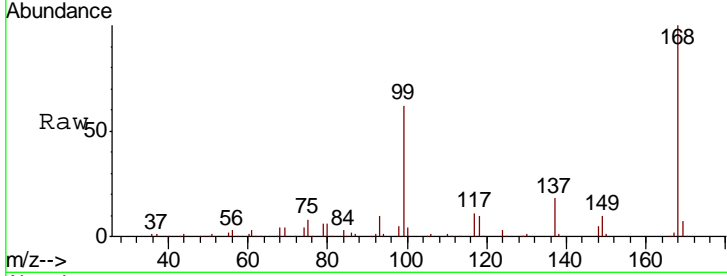




#31
 Cyclohexane
 Concen: 1.201 ug/l
 RT: 5.65 min Scan# 781
 Delta R.T. 0.08 min
 Lab File: VX012935.D
 Acq: 09 Oct 2019 12:16

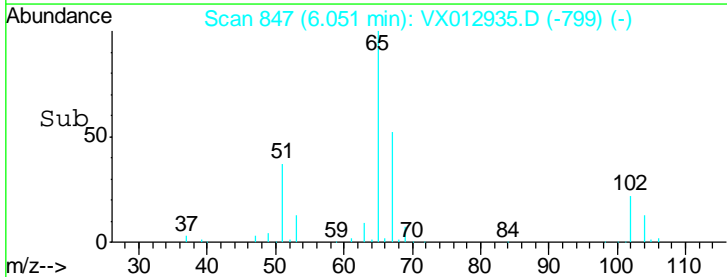
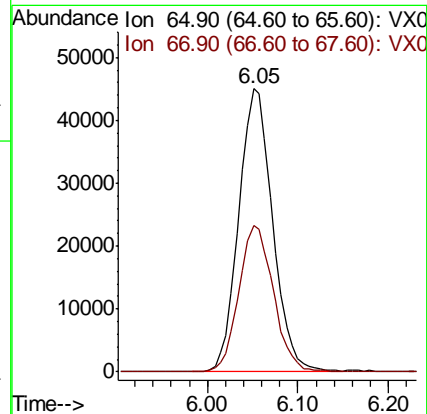
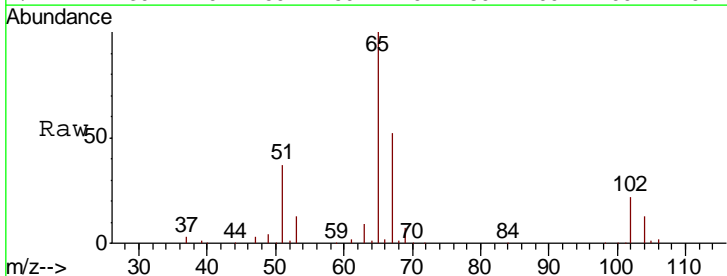
Instrument :
 MSVOA_X
 ClientSampled :

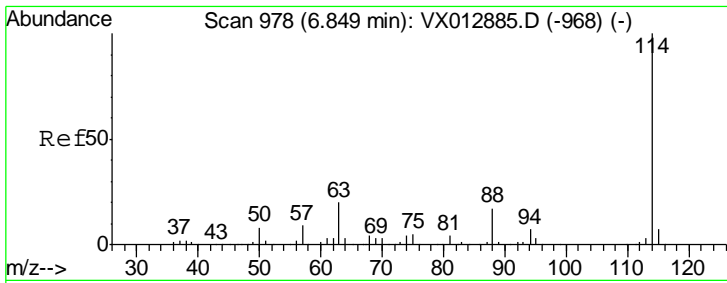
Tgt Ion	Resp	Lower	Upper
56	3928		
69	165.6	25.2	37.8#
84	127.6	71.3	106.9#



#33
 1,2-Dichloroethane-d4
 Concen: 51.806 ug/l
 RT: 6.05 min Scan# 847
 Delta R.T. -0.01 min
 Lab File: VX012935.D
 Acq: 09 Oct 2019 12:16

Tgt Ion	Resp	Lower	Upper
65	116763		
67	52.6	0.0	104.4

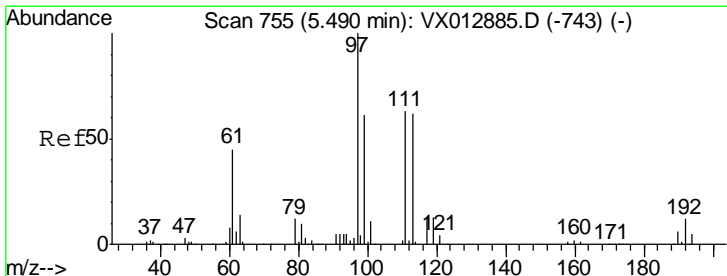
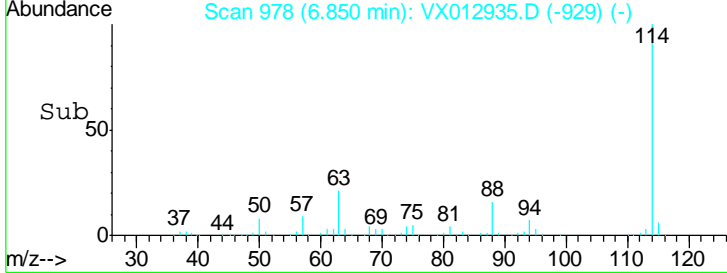
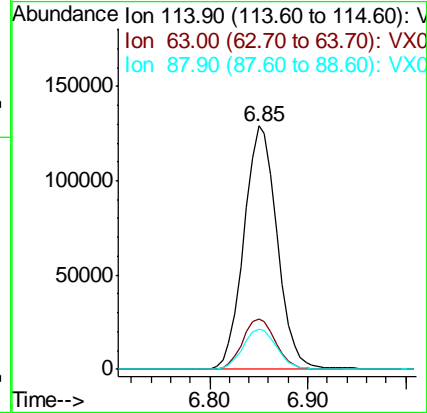
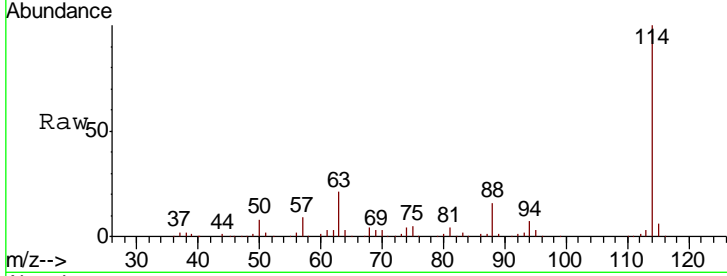




#34
 1,4-Difluorobenzene
 Concen: 50.000 ug/l
 RT: 6.85 min Scan# 978
 Delta R.T. 0.00 min
 Lab File: VX012935.D
 Acq: 09 Oct 2019 12:16

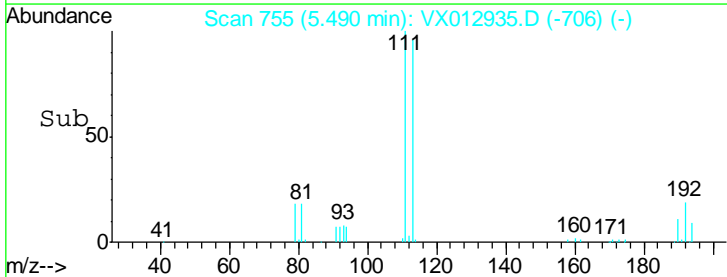
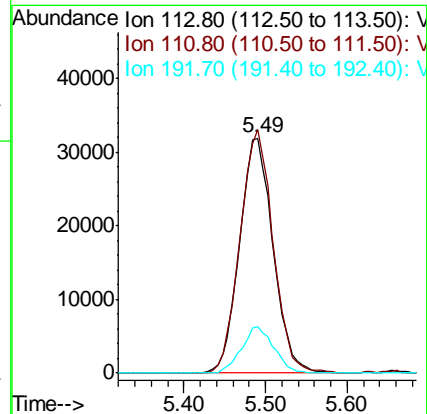
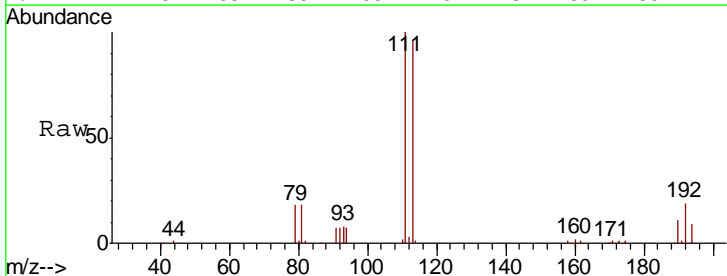
Instrument :
 MSVOA_X
 ClientSampled :

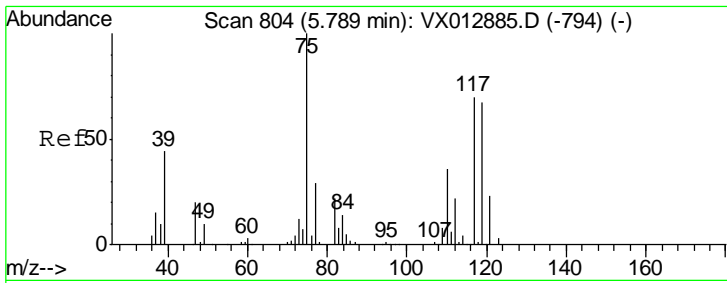
Tgt Ion	Resp	Lower	Upper
114	100		
63	20.7	0.0	40.8
88	16.4	0.0	33.8



#35
 Dibromofluoromethane
 Concen: 52.092 ug/l
 RT: 5.49 min Scan# 755
 Delta R.T. 0.00 min
 Lab File: VX012935.D
 Acq: 09 Oct 2019 12:16

Tgt Ion	Resp	Lower	Upper
113	100		
111	102.2	83.2	124.8
192	19.1	15.4	23.2

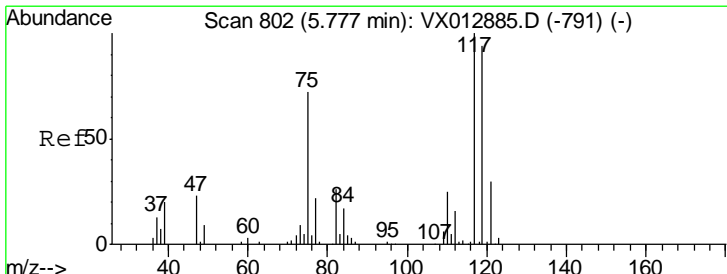
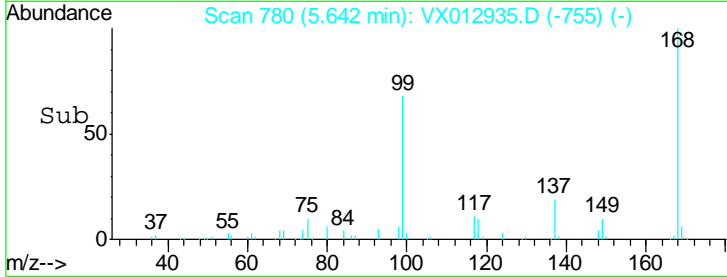
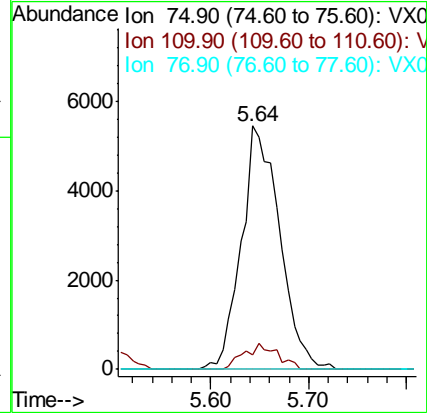
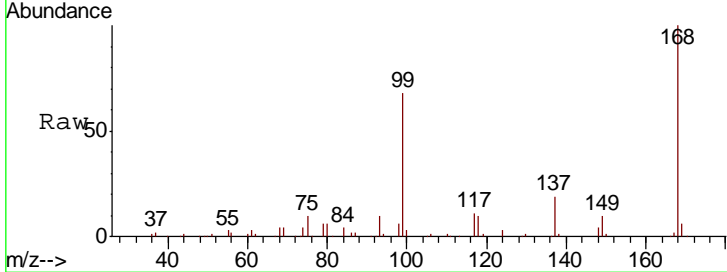




#36
 1,1-Dichloropropene
 Concen: 5.540 ug/l
 RT: 5.64 min Scan# 780
 Delta R.T. -0.15 min
 Lab File: VX012935.D
 Acq: 09 Oct 2019 12:16

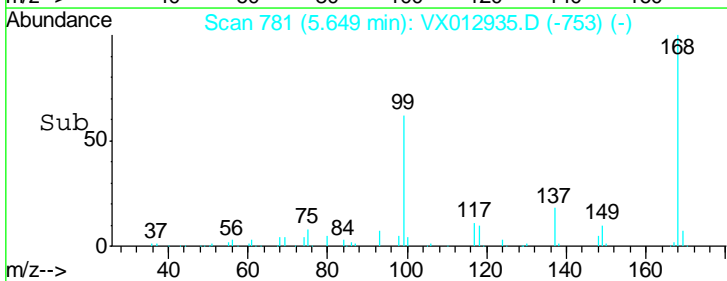
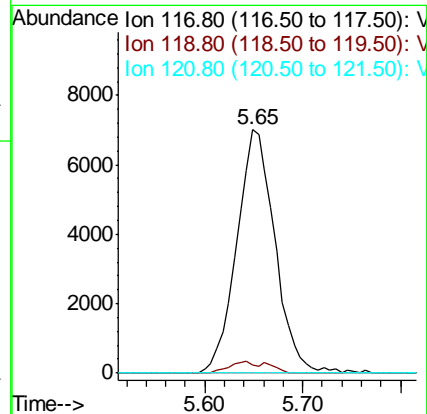
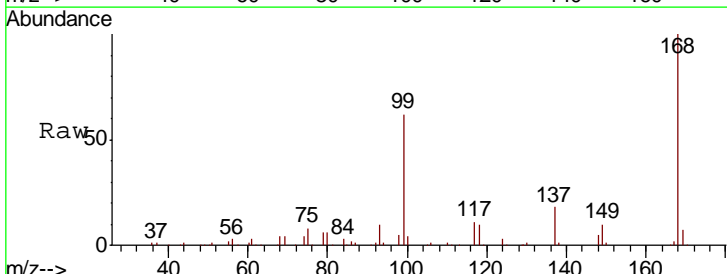
Instrument :
 MSVOA_X
 ClientSampled :

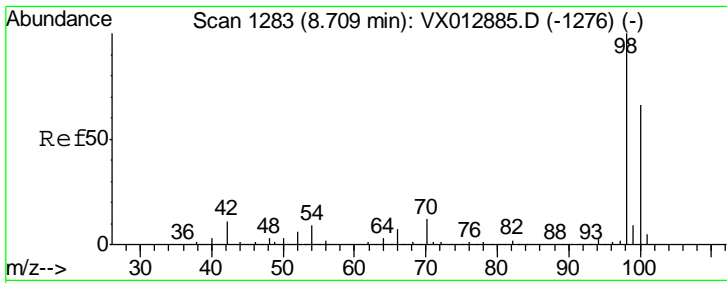
Tgt Ion	Resp	Lower	Upper
75	14800		
110	9.2	17.6	52.9#
77	0.0	24.4	36.6#



#38
 Carbon Tetrachloride
 Concen: 7.278 ug/l
 RT: 5.65 min Scan# 781
 Delta R.T. -0.13 min
 Lab File: VX012935.D
 Acq: 09 Oct 2019 12:16

Tgt Ion	Resp	Lower	Upper
117	18926		
119	3.4	74.5	111.7#
121	0.0	24.2	36.4#

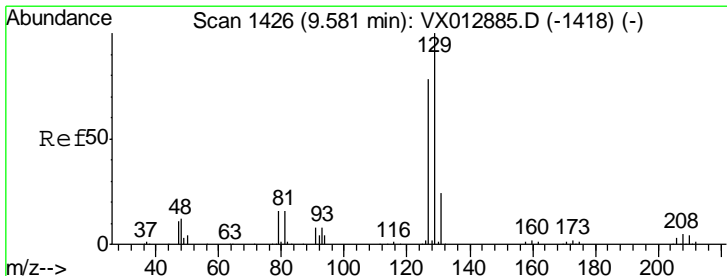
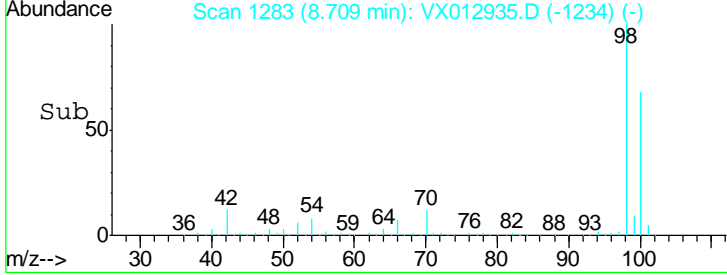
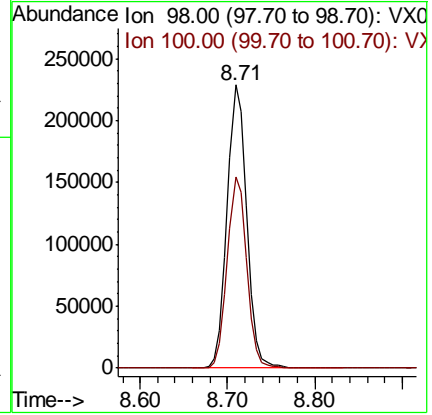
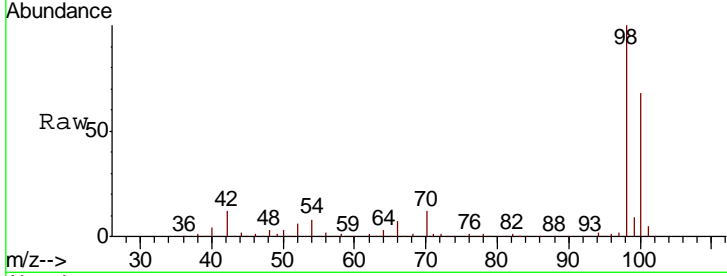




#50
 Toluene-d8
 Concen: 52.153 ug/l
 RT: 8.71 min Scan# 1283
 Delta R.T. 0.00 min
 Lab File: VX012935.D
 Acq: 09 Oct 2019 12:16

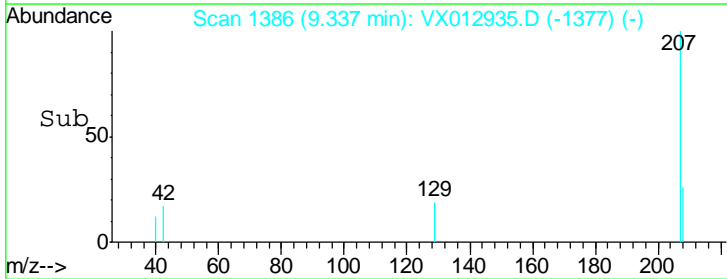
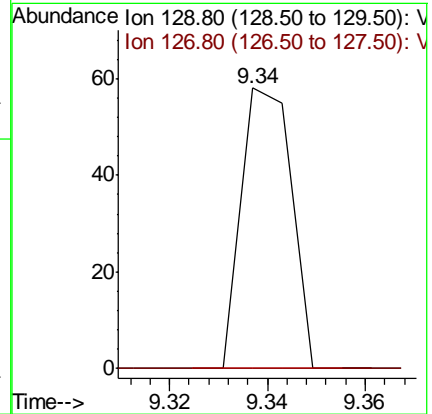
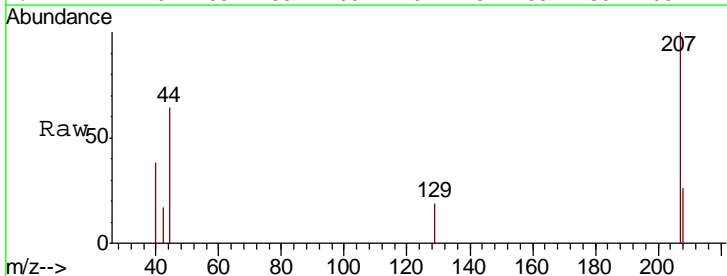
Instrument :
 MSVOA_X
 ClientSampled :

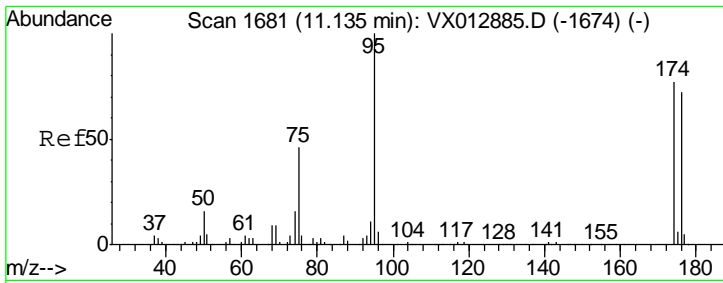
Tgt Ion	Resp	Lower	Upper
98	100		
100	67.4	53.4	80.2



#60
 Dibromochloromethane
 Concen: 1.875 ug/l
 RT: 9.34 min Scan# 1386
 Delta R.T. -0.24 min
 Lab File: VX012935.D
 Acq: 09 Oct 2019 12:16

Tgt Ion	Resp	Lower	Upper
129	100		
127	0.0	38.9	116.7#

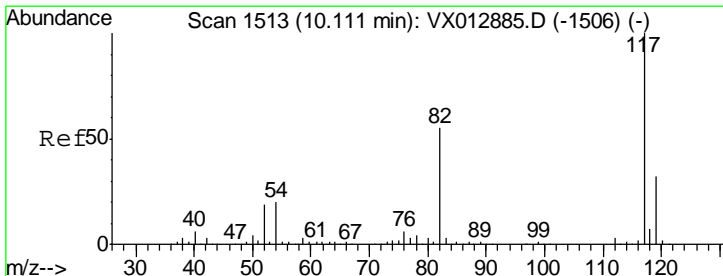
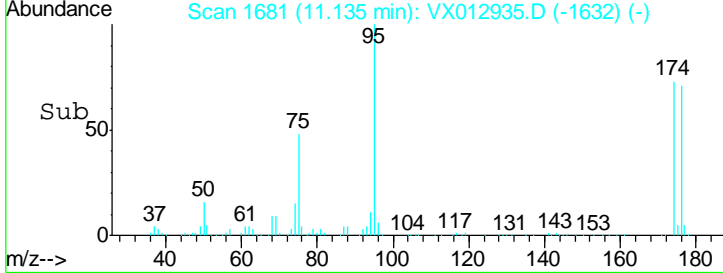
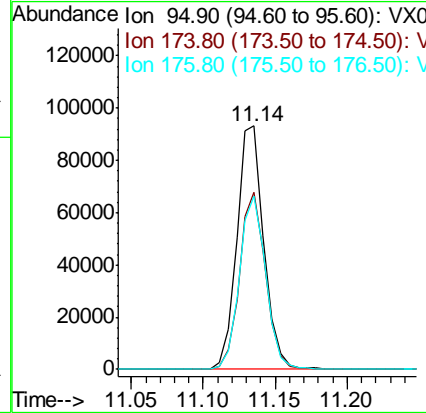
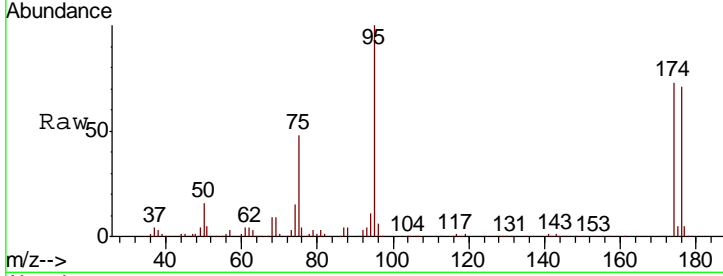




#62
 4-Bromofluorobenzene
 Concen: 46.228 ug/l
 RT: 11.14 min Scan# 1681
 Delta R.T. 0.00 min
 Lab File: VX012935.D
 Acq: 09 Oct 2019 12:16

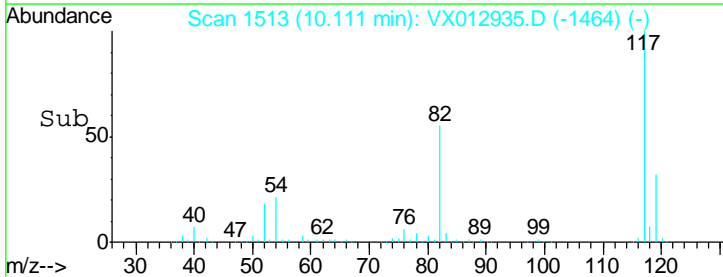
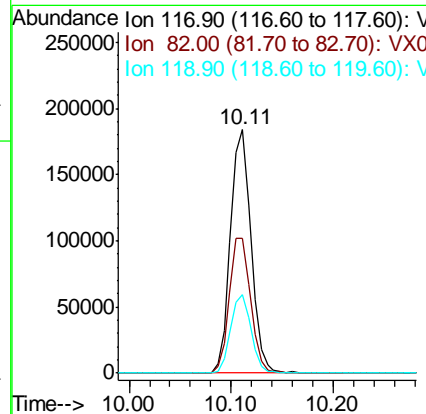
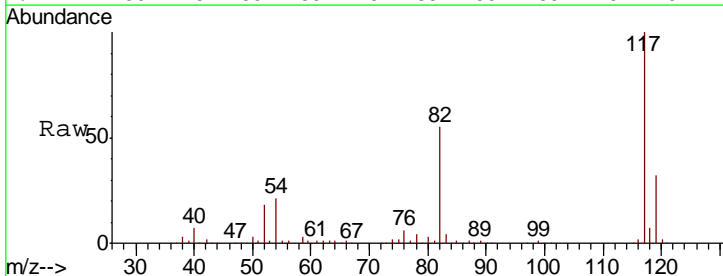
Instrument :
 MSVOA_X
 ClientSampled :

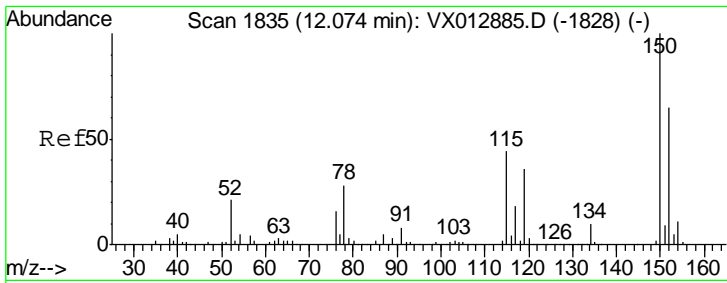
Tgt Ion	Resp	Lower	Upper
95	122180		
174	69.9	0.0	143.4
176	69.3	0.0	136.0



#63
 Chlorobenzene-d5
 Concen: 50.000 ug/l
 RT: 10.11 min Scan# 1513
 Delta R.T. 0.00 min
 Lab File: VX012935.D
 Acq: 09 Oct 2019 12:16

Tgt Ion	Resp	Lower	Upper
117	257183		
82	55.2	44.1	66.1
119	32.1	25.8	38.8

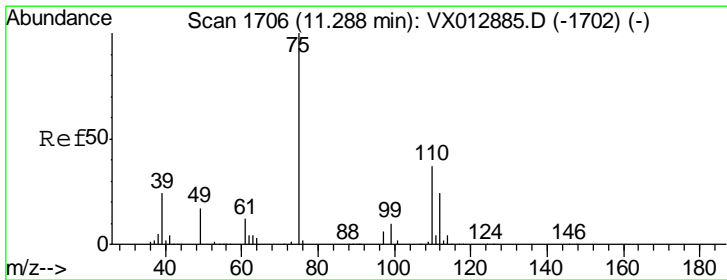
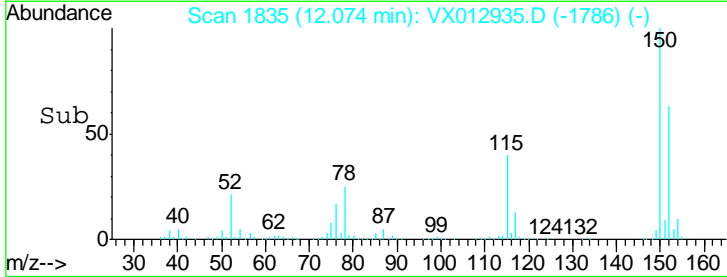
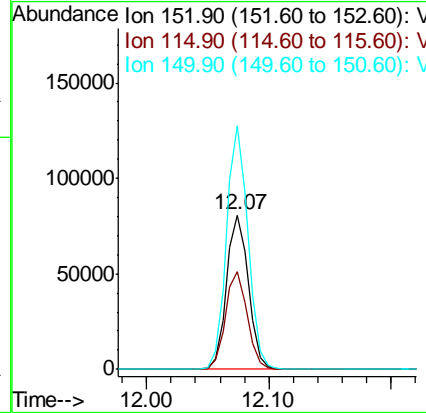
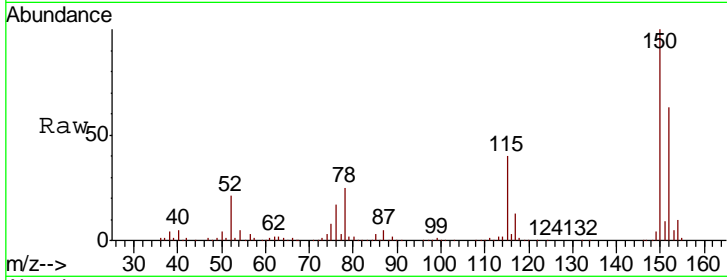




#72
 1,4-Dichlorobenzene-d4
 Concen: 50.000 ug/l
 RT: 12.07 min Scan# 1835
 Delta R.T. 0.00 min
 Lab File: VX012935.D
 Acq: 09 Oct 2019 12:16

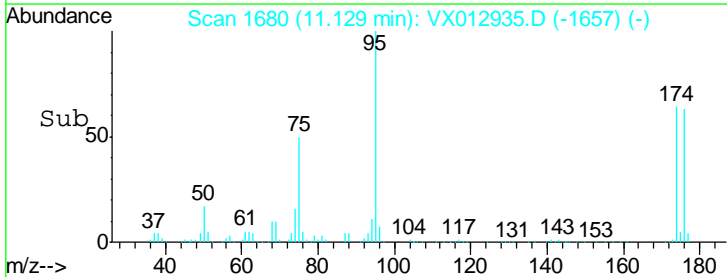
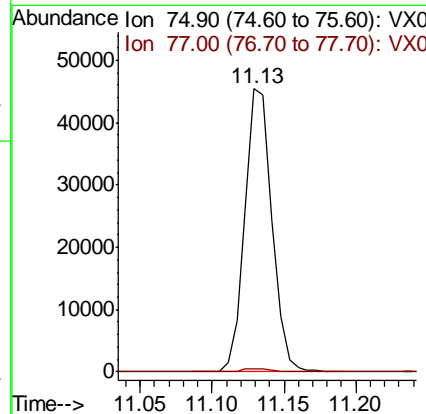
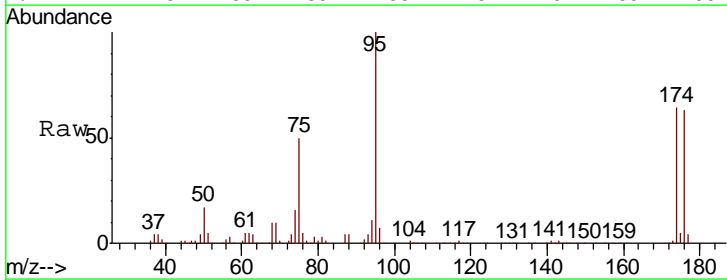
Instrument : MSVOA_X
 ClientSampled :

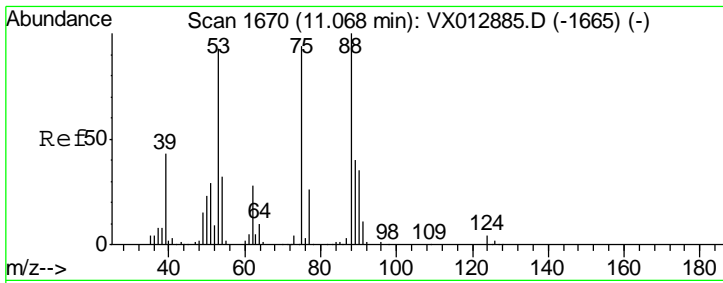
Tgt Ion	Resp	Lower	Upper
152	100		
115	63.4	44.5	133.5
150	154.7	0.0	353.4



#76
 1,2,3-Trichloropropane
 Concen: 26.858 ug/l
 RT: 11.13 min Scan# 1680
 Delta R.T. -0.16 min
 Lab File: VX012935.D
 Acq: 09 Oct 2019 12:16

Tgt Ion	Resp	Lower	Upper
75	100		
77	1.1	22.9	68.8#

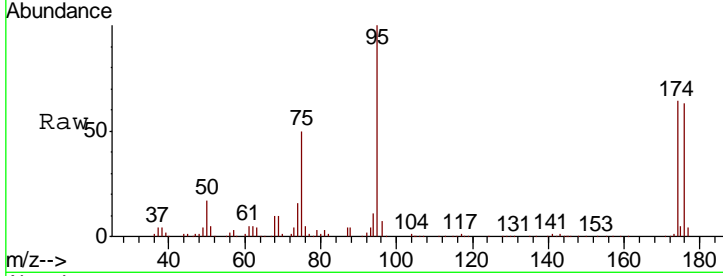




#81
 trans-1,4-Dichloro-2-butene
 Concen: 67.508 ug/l
 RT: 11.13 min Scan# 1680
 Delta R.T. 0.06 min
 Lab File: VX012935.D
 Acq: 09 Oct 2019 12:16

Instrument :
 MSVOA_X
 ClientSampled :

Tot Ion	75	Resp	59602
Ion Ratio	Lower	Upper	
75	100		
53	0.0	78.5	117.7#
89	0.0	37.4	56.2#



Abundance Ion 74.90 (74.60 to 75.60): VX0
 Ion 53.00 (52.70 to 53.70): VX0
 Ion 88.90 (88.60 to 89.60): VX0

