

Data Path : Z:\VOASRV\HPCHEM1\MSVOA X\DATA\VX100919\
 Data File : VX012950.D
 Acq On : 09 Oct 2019 18:05
 Operator : JC/SP
 Sample : K5213-09
 Misc : 5.0mL/MSVOA X/WATER
 ALS Vial : 23 Sample Multiplier: 1

Instrument :
 MSVOA_X
 ClientSampled :

Quant Time: Oct 10 01:39:02 2019
 Quant Method : Z:\VOASRV\HPCHEM1\MSVOA_X\METHOD\82X100819W.M
 Quant Title : SW846 8260
 QLast Update : Wed Oct 09 01:51:23 2019
 Response via : Initial Calibration

Internal Standards	R.T.	QIon	Response	Conc	Units	Dev(Min)
1) Pentafluorobenzene	5.65	168	172061	50.00	ug/l	0.00
34) 1,4-Difluorobenzene	6.85	114	294959	50.00	ug/l	0.00
63) Chlorobenzene-d5	10.11	117	253955	50.00	ug/l	0.00
72) 1,4-Dichlorobenzene-d4	12.07	152	102826	50.00	ug/l	0.00

System Monitoring Compounds

33) 1,2-Dichloroethane-d4	6.05	65	111781	51.98	ug/l	0.00
Spiked Amount	50.000		Recovery	=	103.96%	
35) Dibromofluoromethane	5.49	113	89536	52.89	ug/l	0.00
Spiked Amount	50.000		Recovery	=	105.78%	
50) Toluene-d8	8.71	98	345389	52.31	ug/l	0.00
Spiked Amount	50.000		Recovery	=	104.62%	
62) 4-Bromofluorobenzene	11.14	95	121082	47.20	ug/l	0.00
Spiked Amount	50.000		Recovery	=	94.40%	

Target Compounds

						Qvalue
3) Chloromethane	1.39	50	58721	30.764	ug/l #	46
4) Vinyl Chloride	1.40	62	6858738	3481.406	ug/l	93
5) Bromomethane	1.64	94	313	0.382	ug/l #	73
10) Methyl Iodide	2.51	142	128	5.141	ug/l #	40
11) Tert butyl alcohol	3.03	59	228473	400.767	ug/l	99
12) 1,1-Dichloroethene	2.37	96	8350	4.802	ug/l	96
14) Allyl chloride	2.70	41	625	0.202	ug/l #	26
16) Acetone	2.43	43	86340	76.168	ug/l	99
17) Carbon Disulfide	2.56	76	4579	0.924	ug/l #	88
18) Methyl Acetate	3.02	43	28078	10.450	ug/l #	51
19) Methyl tert-butyl Ether	3.19	73	5491	0.914	ug/l	98
20) Methylene Chloride	2.85	84	549	0.264	ug/l #	83
21) trans-1,2-Dichloroethene	3.17	96	86687	46.515	ug/l	95
25) 2-Butanone	4.67	43	5731	3.644	ug/l #	89
27) cis-1,2-Dichloroethene	4.59	96	12151395	5656.605	ug/l	88
28) Bromochloromethane	4.96	49	50	Below Cal	#	13
31) Cyclohexane	5.57	56	996	0.319	ug/l #	83
36) 1,1-Dichloropropene	5.65	75	14010	5.402	ug/l #	50
37) Ethyl Acetate	4.67	43	5731	1.976	ug/l #	67
38) Carbon Tetrachloride	5.65	117	18420	7.297	ug/l #	18
39) Methylcyclohexane	7.45	83	1065	0.339	ug/l	93
40) Benzene	6.14	78	49892	6.514	ug/l	97
44) Trichloroethene	7.21	130	23516	11.072	ug/l	92
52) Toluene	8.78	92	3846	0.785	ug/l	88
56) Ethyl methacrylate	9.18	69	183	1.882	ug/l #	19
59) 2-Hexanone	9.50	43	1352	0.599	ug/l	91
60) Dibromochloromethane	9.33	129	37910	18.772	ug/l #	10
64) Tetrachloroethene	9.33	164	37590	21.341	ug/l	94
68) m/p-Xylenes	10.36	106	799	0.239	ug/l	86
69) o-Xylene	10.70	106	1336	0.409	ug/l	88
73) Isopropylbenzene	11.01	105	2042	0.270	ug/l	99
74) N-amyl acetate	10.95	43	2077	0.638	ug/l #	41
76) 1,2,3-Trichloropropane	11.13	75	60997	26.745	ug/l #	33
81) trans-1,4-Dichloro-2-buten	11.13	75	60997	67.241	ug/l #	10

Data Path : Z:\VOASRV\HPCHEM1\MSVOA X\DATA\VX100919\
 Data File : VX012950.D
 Acq On : 09 Oct 2019 18:05
 Operator : JC/SP
 Sample : K5213-09
 Misc : 5.0mL/MSVOA X/WATER
 ALS Vial : 23 Sample Multiplier: 1

Instrument :
 MSVOA_X
 ClientSampleId :

Quant Time: Oct 10 01:39:02 2019
 Quant Method : Z:\VOASRV\HPCHEM1\MSVOA_X\METHOD\82X100819W.M
 Quant Title : SW846 8260
 QLast Update : Wed Oct 09 01:51:23 2019
 Response via : Initial Calibration

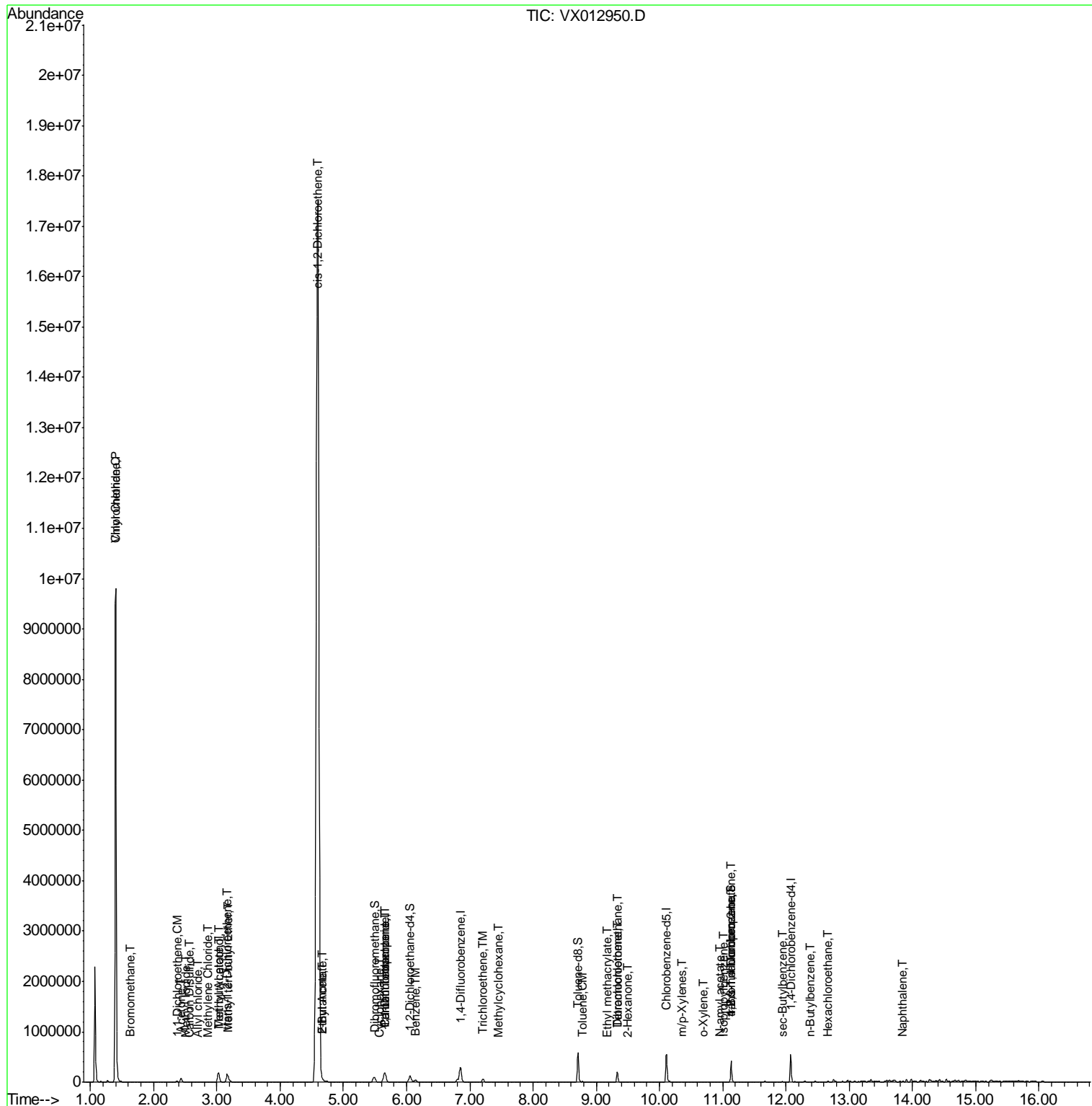
Internal Standards	R.T.	QIon	Response	Conc	Units	Dev(Min)
85) sec-Butylbenzene	11.95	105	4242	0.595	ug/l	89
89) n-Butylbenzene	12.39	91	1505	0.271	ug/l #	76
90) Hexachloroethane	12.66	117	973	2.878	ug/l #	13
95) Naphthalene	13.83	128	2161	0.307	ug/l #	70

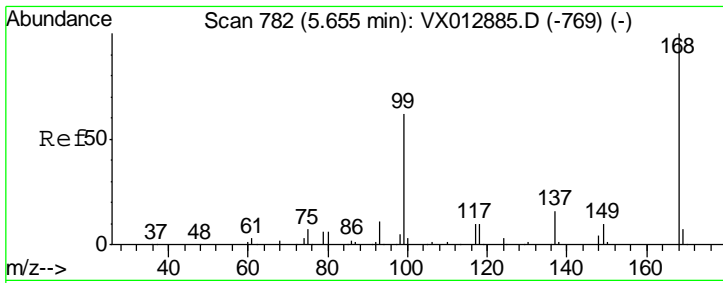
(#) = qualifier out of range (m) = manual integration (+) = signals summed

Data Path : Z:\VOASRV\HPCHEM1\MSVOA X\DATA\VX100919\
 Data File : VX012950.D
 Acq On : 09 Oct 2019 18:05
 Operator : JC/SP
 Sample : K5213-09
 Misc : 5.0mL/MSVOA X/WATER
 ALS Vial : 23 Sample Multiplier: 1

Instrument :
 MSVOA_X
 ClientSampled :

Quant Time: Oct 10 01:39:02 2019
 Quant Method : Z:\VOASRV\HPCHEM1\MSVOA_X\METHOD\82X100819W.M
 Quant Title : SW846 8260
 QLast Update : Wed Oct 09 01:51:23 2019
 Response via : Initial Calibration

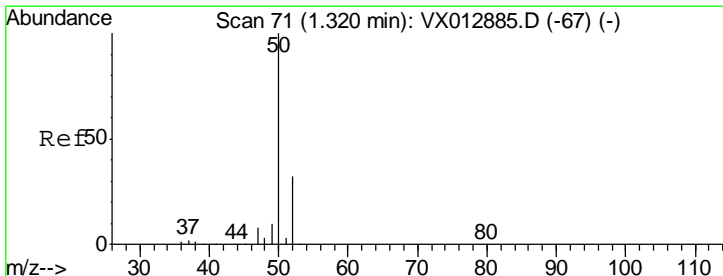
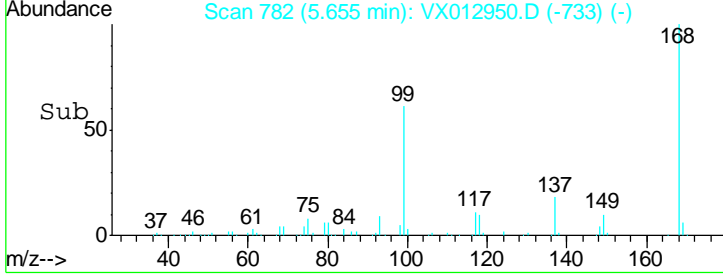
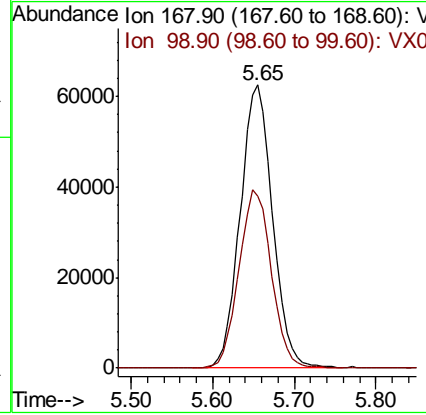
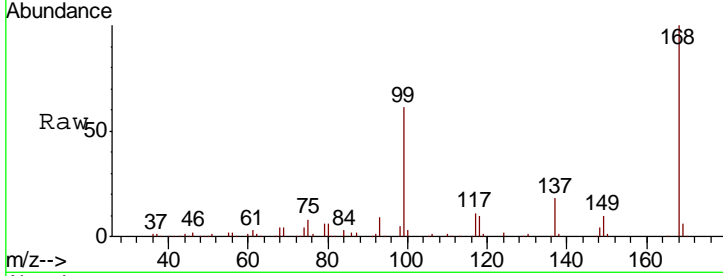




#1
 Pentafluorobenzene
 Concen: 50.000 ug/l
 RT: 5.65 min Scan# 782
 Delta R.T. 0.00 min
 Lab File: VX012950.D
 Acq: 09 Oct 2019 18:05

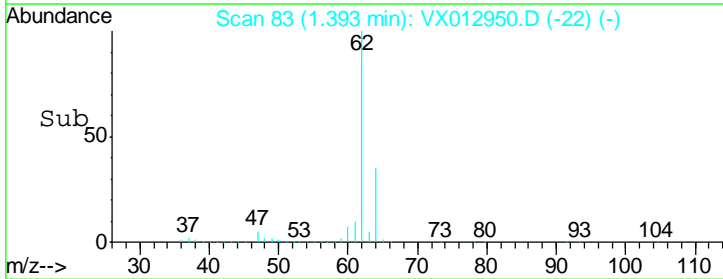
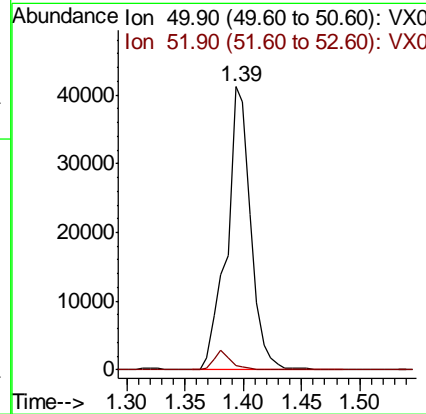
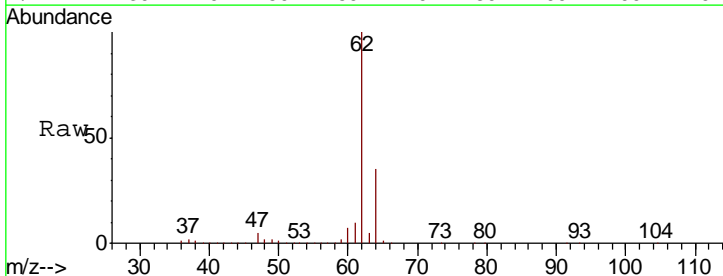
Instrument : MSVOA_X
 ClientSampleId :

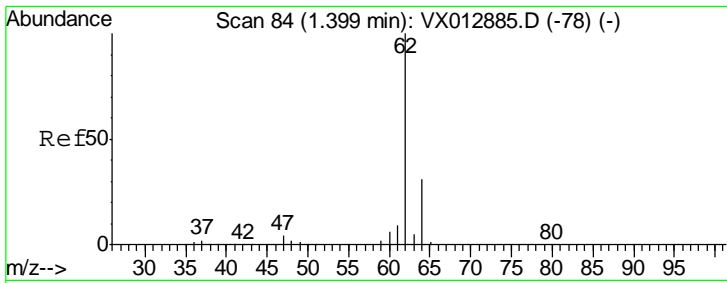
Tgt Ion: 168 Resp: 172061
 Ion Ratio Lower Upper
 168 100
 99 60.9 49.4 74.0



#3
 Chloromethane
 Concen: 30.764 ug/l
 RT: 1.39 min Scan# 83
 Delta R.T. 0.07 min
 Lab File: VX012950.D
 Acq: 09 Oct 2019 18:05

Tgt Ion: 50 Resp: 58721
 Ion Ratio Lower Upper
 50 100
 52 1.4 25.2 37.8#

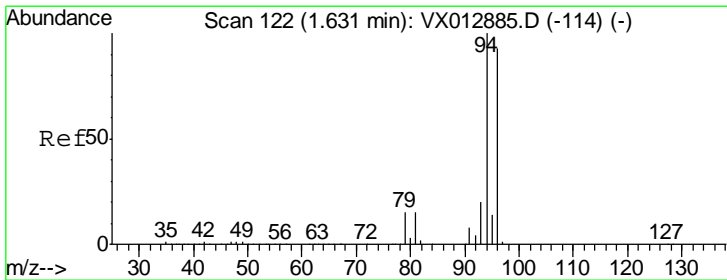
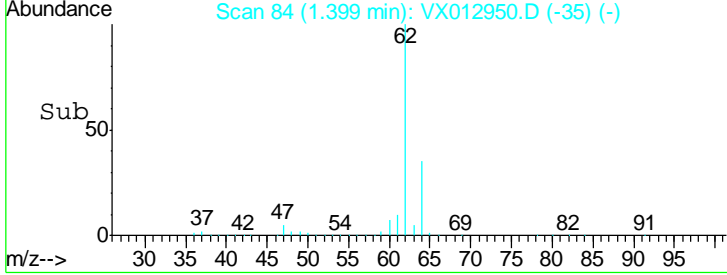
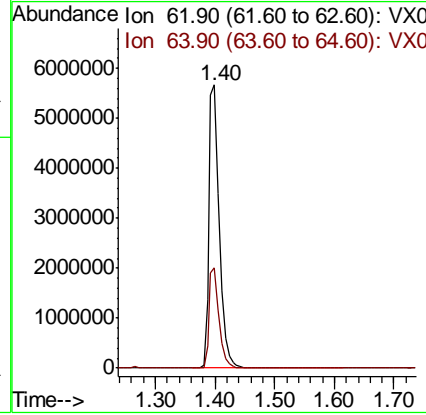
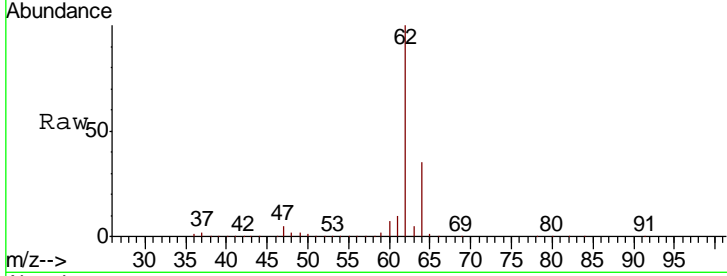




#4
 Vinyl Chloride
 Concen: 3481.406 ug/l
 RT: 1.40 min Scan# 84
 Delta R.T. 0.00 min
 Lab File: VX012950.D
 Acq: 09 Oct 2019 18:05

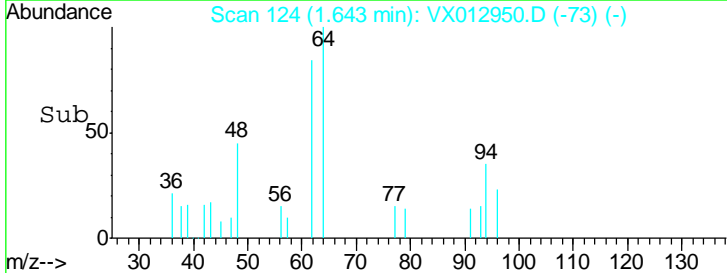
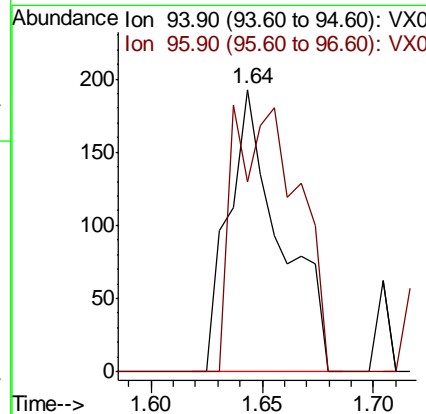
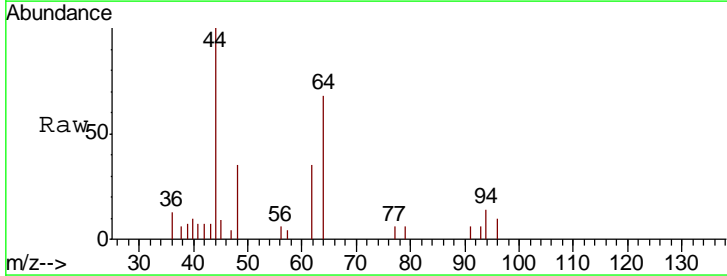
Instrument :
 MSVOA_X
 ClientSampled :

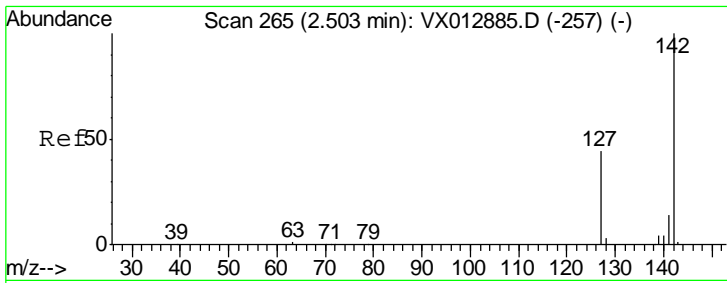
Tgt Ion	Resp	Lower	Upper
62	100		
64	35.3	25.3	37.9



#5
 Bromomethane
 Concen: 0.382 ug/l
 RT: 1.64 min Scan# 124
 Delta R.T. 0.01 min
 Lab File: VX012950.D
 Acq: 09 Oct 2019 18:05

Tgt Ion	Resp	Lower	Upper
94	100		
96	67.4	74.7	112.1#

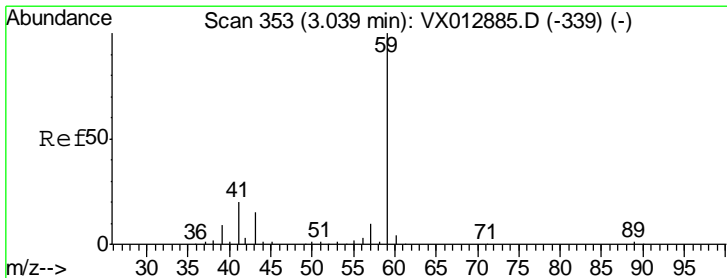
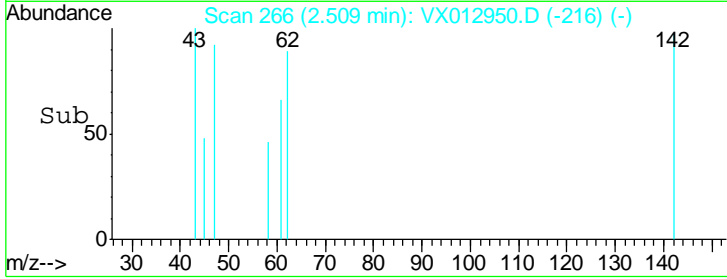
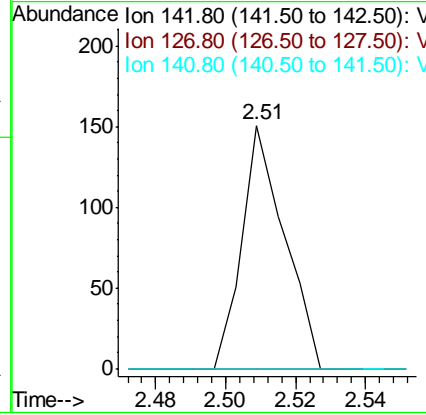
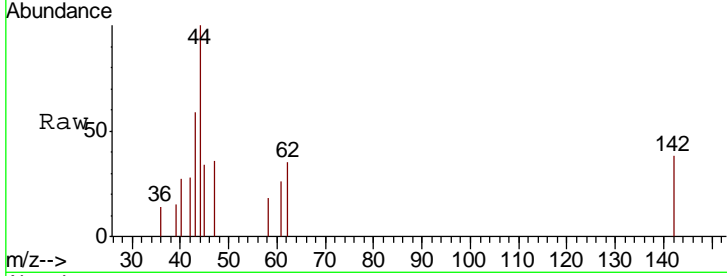




#10
Methyl Iodide
Concen: 5.141 ug/l
RT: 2.51 min Scan# 266
Delta R.T. 0.01 min
Lab File: VX012950.D
Acq: 09 Oct 2019 18:05

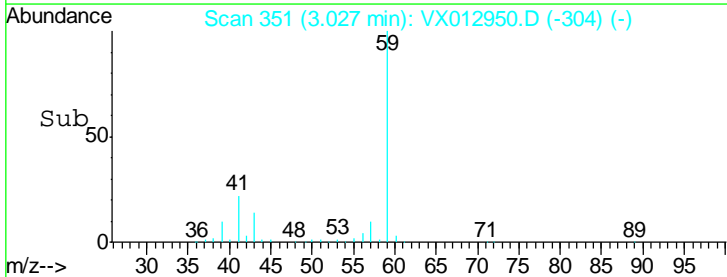
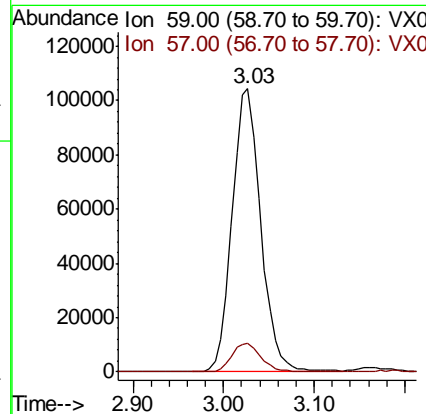
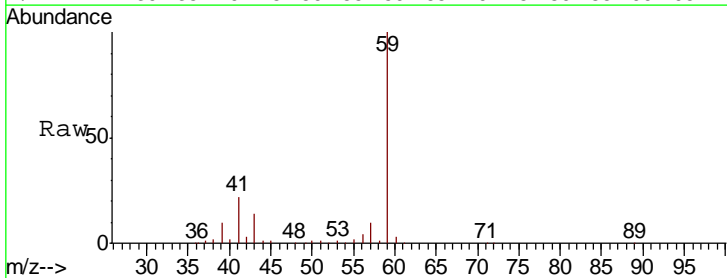
Instrument :
MSVOA_X
ClientSampled :

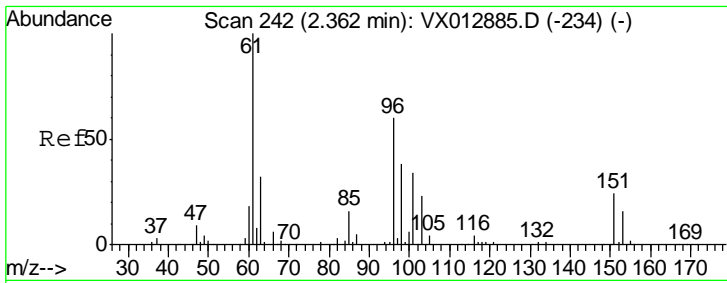
Tgt Ion	Resp	Lower	Upper
142	128		
127	0.0	34.9	52.3#
141	0.0	11.6	17.4#



#11
Tert butyl alcohol
Concen: 400.767 ug/l
RT: 3.03 min Scan# 351
Delta R.T. -0.01 min
Lab File: VX012950.D
Acq: 09 Oct 2019 18:05

Tgt Ion	Resp	Lower	Upper
59	228473		
57	10.2	8.3	12.5

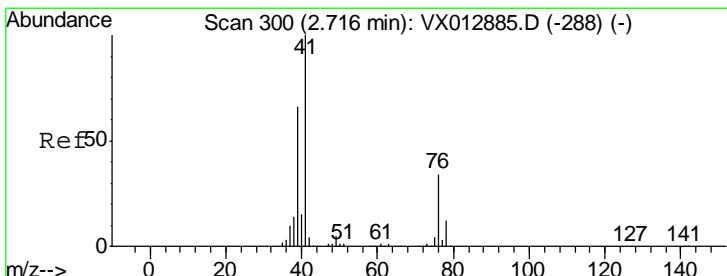
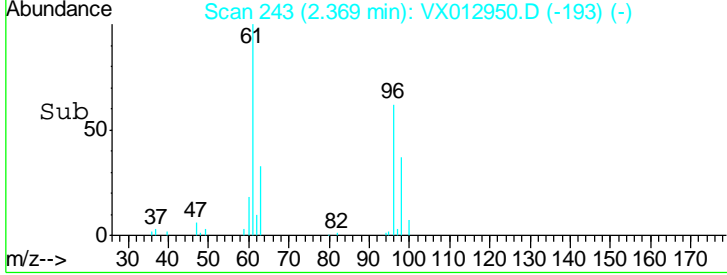
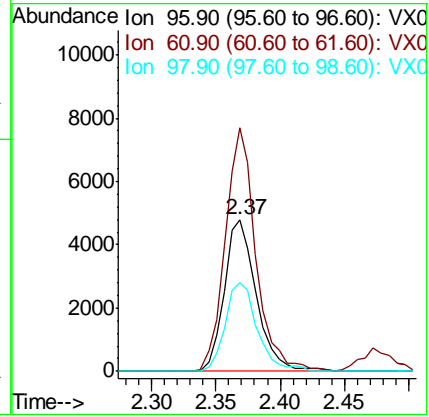
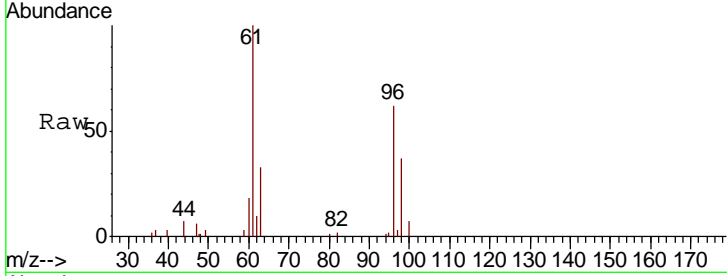




#12
 1,1-Dichloroethene
 Concen: 4.802 ug/l
 RT: 2.37 min Scan# 243
 Delta R.T. 0.01 min
 Lab File: VX012950.D
 Acq: 09 Oct 2019 18:05

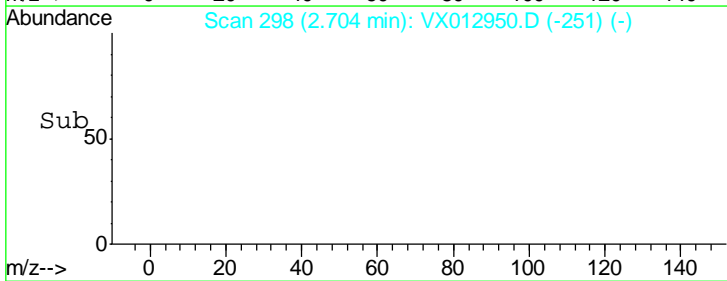
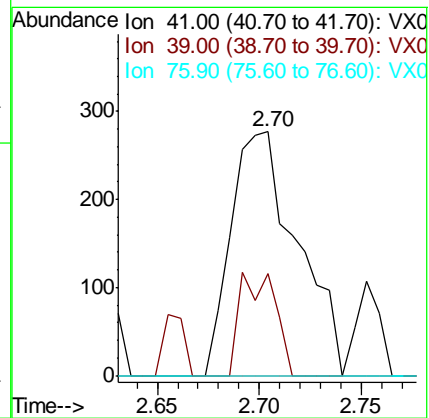
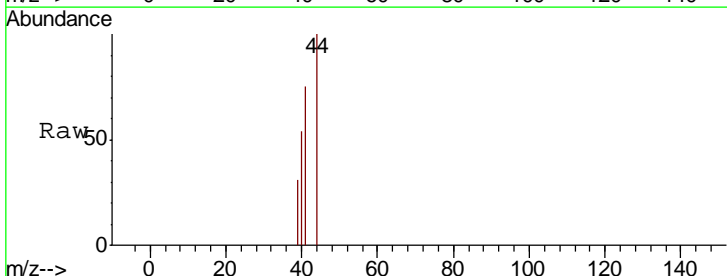
Instrument :
 MSVOA_X
 ClientSampled :

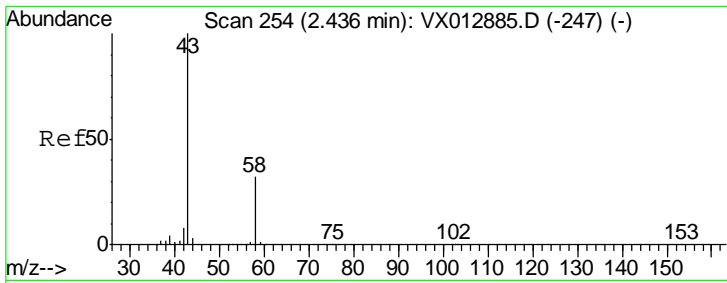
Tgt Ion	Resp	Lower	Upper
96	8350		
61	160.7	132.2	198.4
98	58.8	50.5	75.7



#14
 Allyl chloride
 Concen: 0.202 ug/l
 RT: 2.70 min Scan# 298
 Delta R.T. -0.01 min
 Lab File: VX012950.D
 Acq: 09 Oct 2019 18:05

Tgt Ion	Resp	Lower	Upper
41	625		
39	0.0	51.0	76.6#
76	0.0	26.2	39.4#

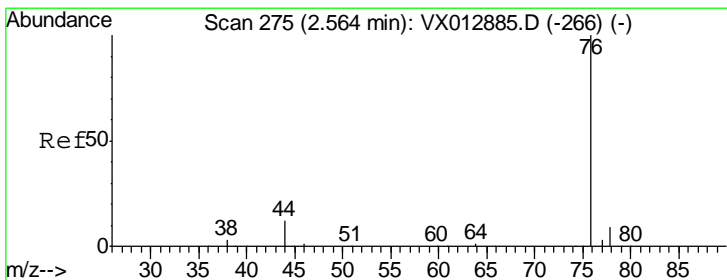
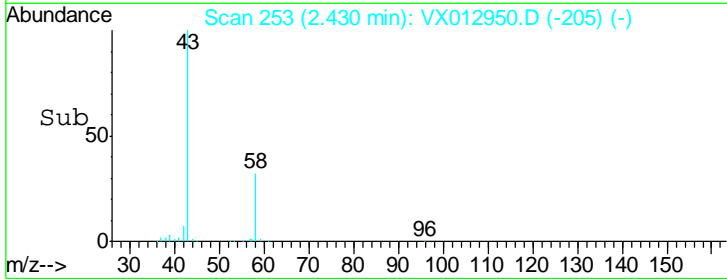
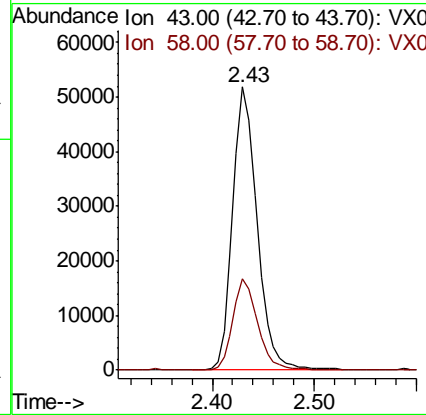
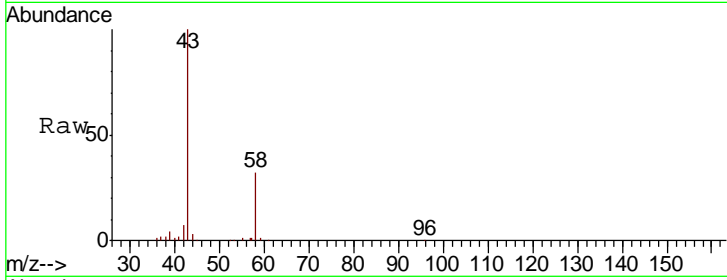




#16
 Acetone
 Concen: 76.168 ug/l
 RT: 2.43 min Scan# 253
 Delta R.T. -0.01 min
 Lab File: VX012950.D
 Acq: 09 Oct 2019 18:05

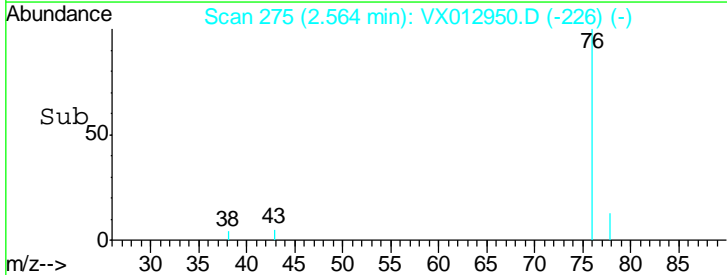
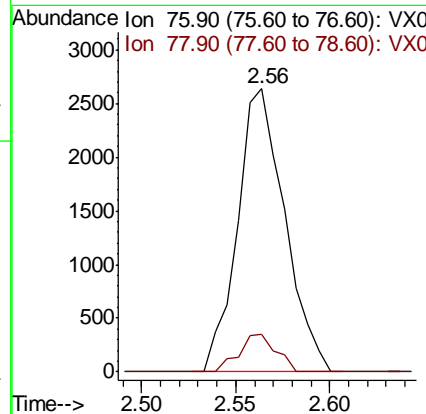
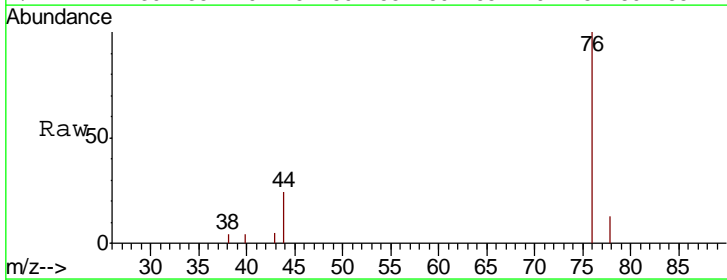
Instrument :
 MSVOA_X
 ClientSampled :

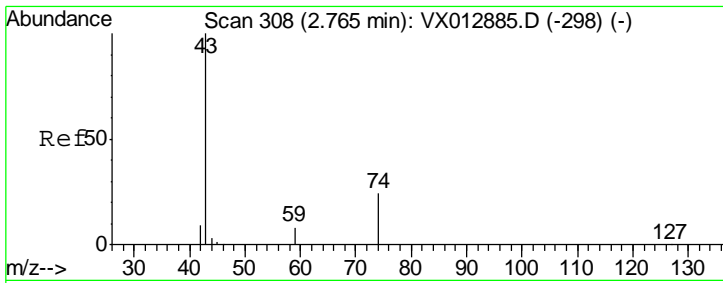
Tgt Ion	Resp	Lower	Upper
43	100		
58	32.3	25.4	38.2



#17
 Carbon Disulfide
 Concen: 0.924 ug/l
 RT: 2.56 min Scan# 275
 Delta R.T. 0.00 min
 Lab File: VX012950.D
 Acq: 09 Oct 2019 18:05

Tgt Ion	Resp	Lower	Upper
76	100		
78	13.1	7.1	10.7#

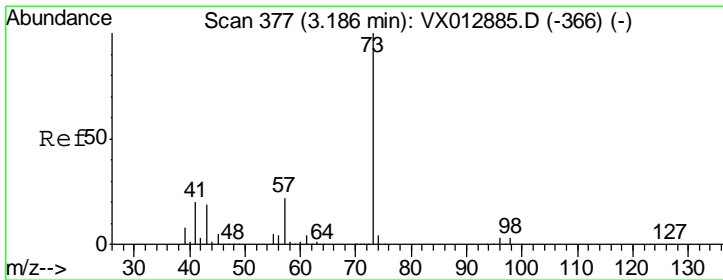
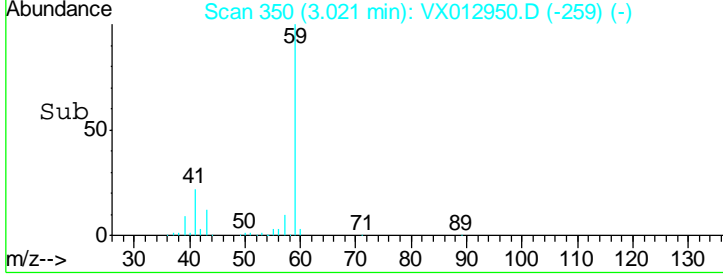
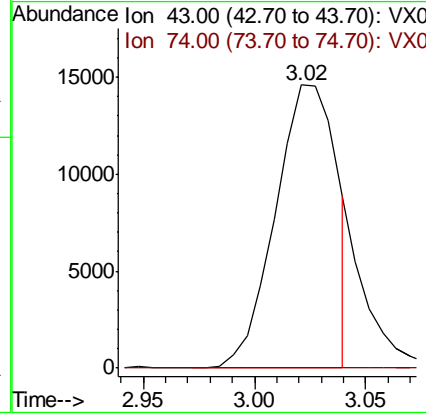
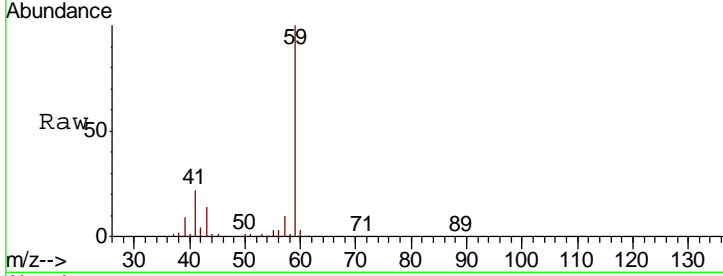




#18
 Methyl Acetate
 Concen: 10.450 ug/l
 RT: 3.02 min Scan# 350
 Delta R.T. 0.26 min
 Lab File: VX012950.D
 Acq: 09 Oct 2019 18:05

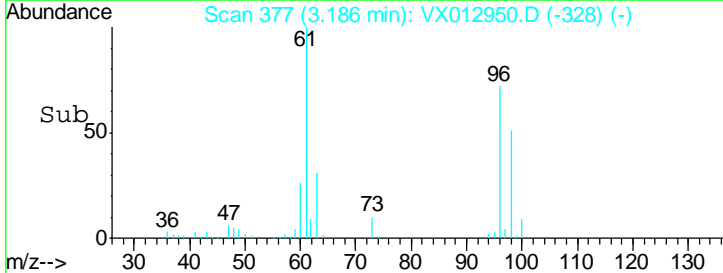
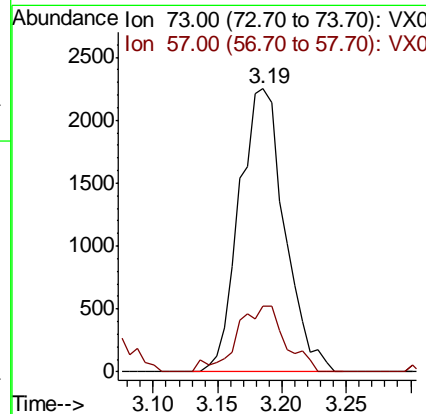
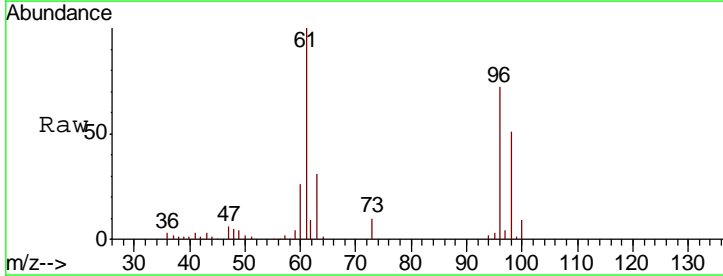
Instrument :
 MSVOA_X
 ClientSampled :

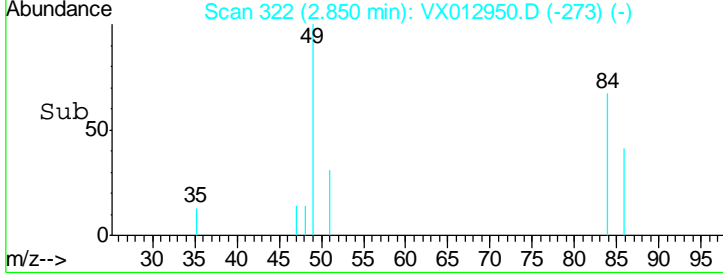
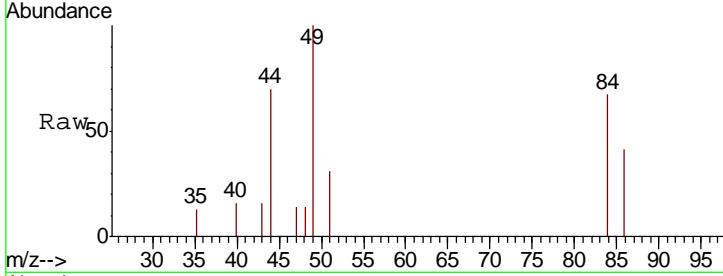
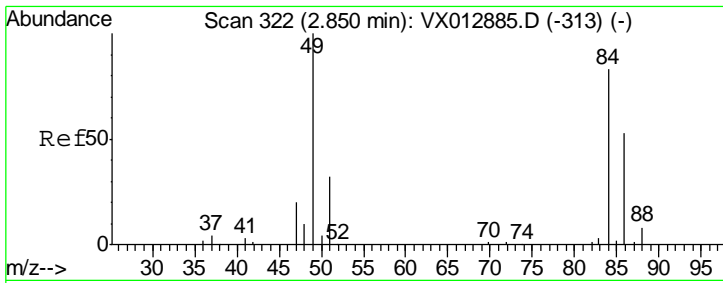
Tgt Ion	Resp	Lower	Upper
43	100		
74	0.0	19.2	28.8#



#19
 Methyl tert-butyl Ether
 Concen: 0.914 ug/l
 RT: 3.19 min Scan# 377
 Delta R.T. 0.00 min
 Lab File: VX012950.D
 Acq: 09 Oct 2019 18:05

Tgt Ion	Resp	Lower	Upper
73	100		
57	23.1	17.8	26.6

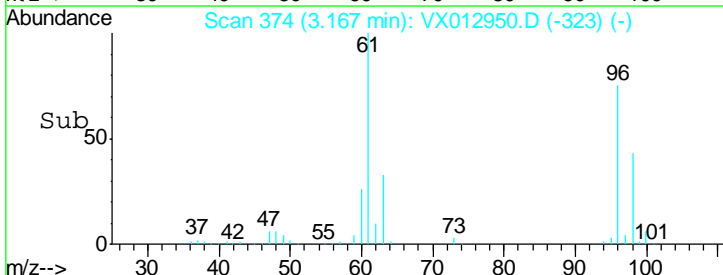
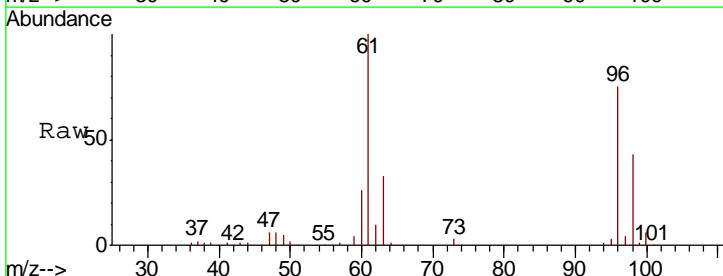
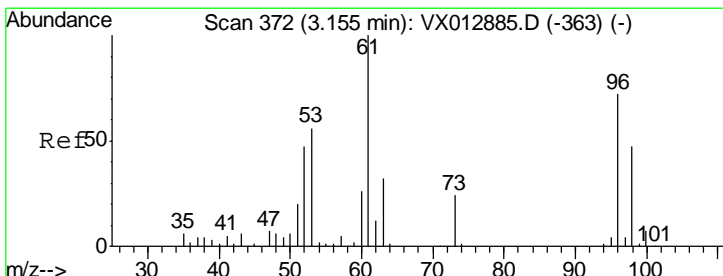
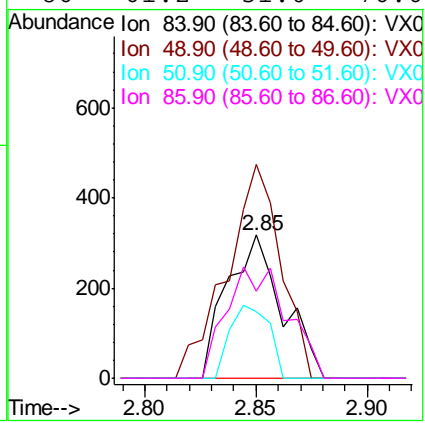




#20
 Methylene Chloride
 Concen: 0.264 ug/l
 RT: 2.85 min Scan# 322
 Delta R.T. 0.00 min
 Lab File: VX012950.D
 Acq: 09 Oct 2019 18:05

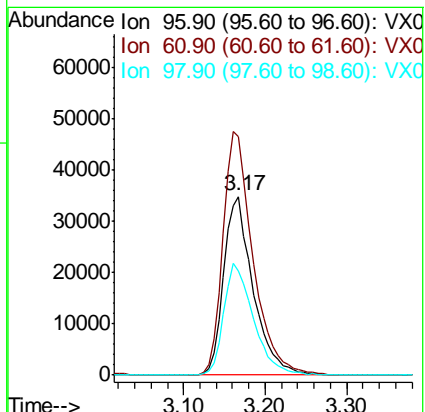
Instrument :
 MSVOA_X
 ClientSampled :

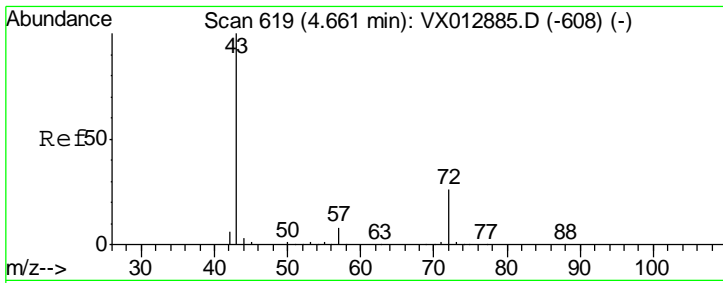
Tgt Ion	Resp	Lower	Upper
84	100		
49	149.5	96.6	144.8#
51	46.4	30.7	46.1#
86	61.2	51.0	76.6



#21
 trans-1,2-Dichloroethene
 Concen: 46.515 ug/l
 RT: 3.17 min Scan# 374
 Delta R.T. 0.01 min
 Lab File: VX012950.D
 Acq: 09 Oct 2019 18:05

Tgt Ion	Resp	Lower	Upper
96	100		
61	133.9	110.4	165.6
98	58.1	51.5	77.3

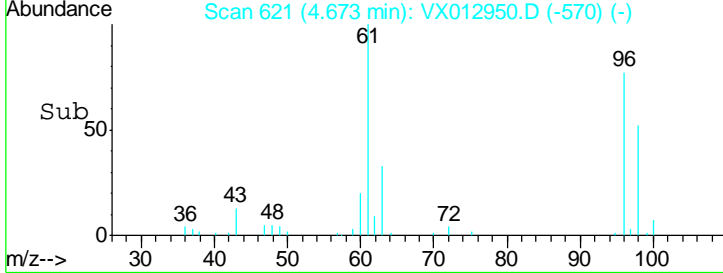
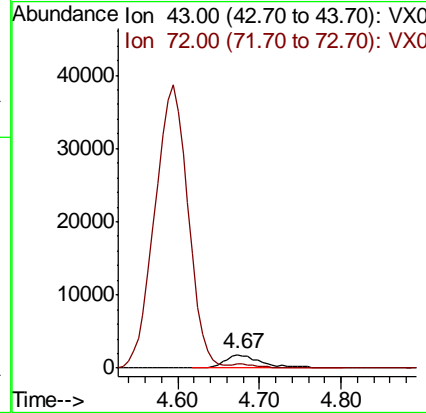
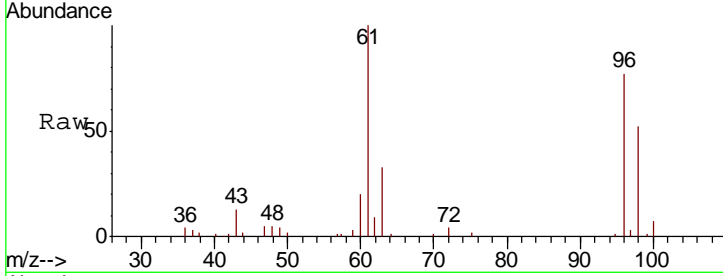




#25
 2-Butanone
 Concen: 3.644 ug/l
 RT: 4.67 min Scan# 621
 Delta R.T. 0.01 min
 Lab File: VX012950.D
 Acq: 09 Oct 2019 18:05

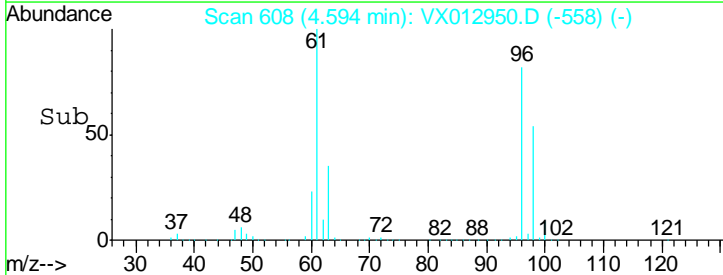
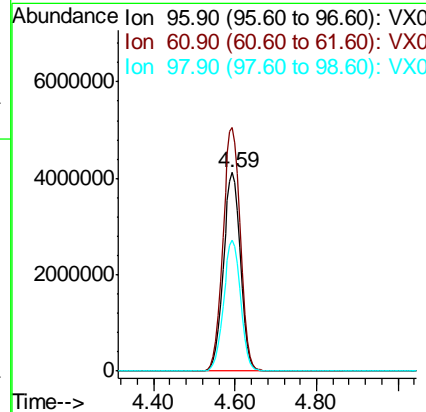
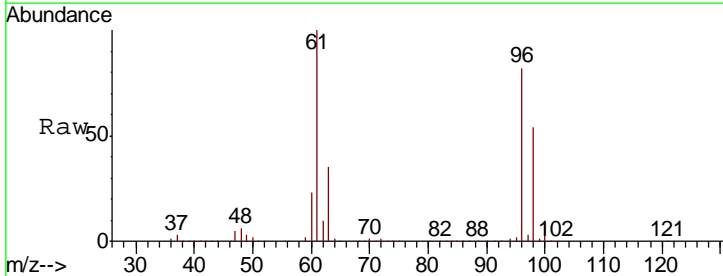
Instrument :
 MSVOA_X
 ClientSampled :

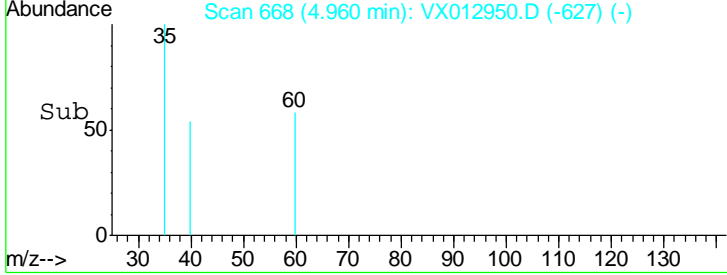
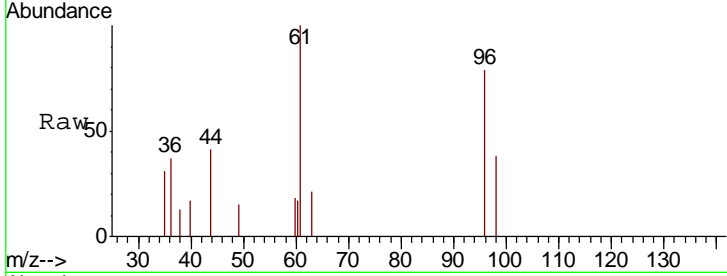
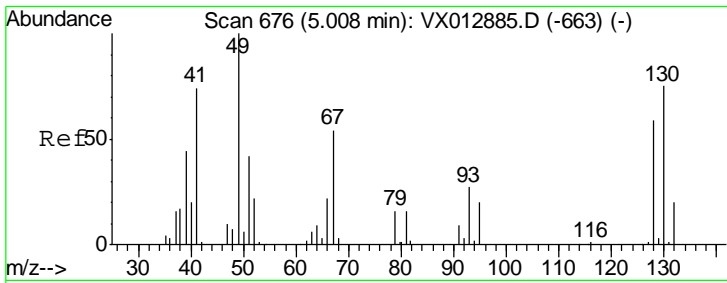
Tgt Ion	Resp	Lower	Upper
43	100		
72	32.1	21.0	31.6#



#27
 cis-1,2-Dichloroethene
 Concen: 5656.605 ug/l
 RT: 4.59 min Scan# 608
 Delta R.T. 0.01 min
 Lab File: VX012950.D
 Acq: 09 Oct 2019 18:05

Tgt Ion	Resp	Lower	Upper
96	100		
61	125.1	0.0	290.6
98	65.6	0.0	128.8

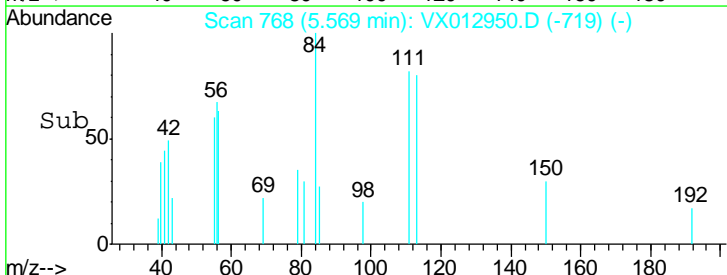
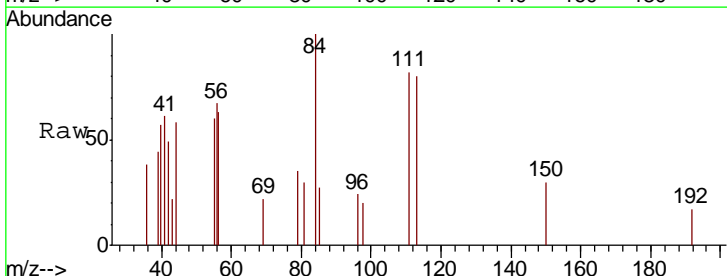
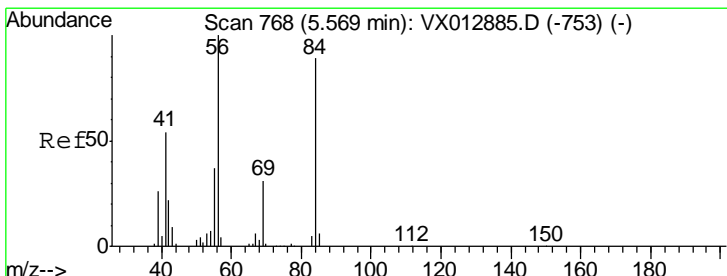
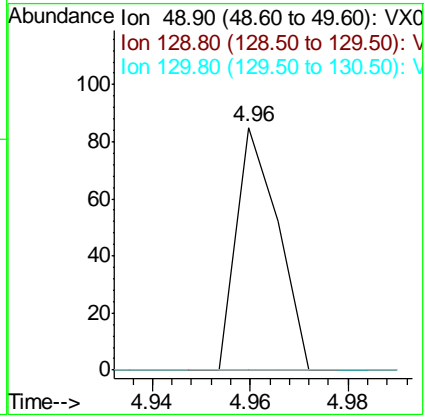




#28
 Bromochloromethane
 Concen: Below Cal
 RT: 4.96 min Scan# 668
 Delta R.T. -0.05 min
 Lab File: VX012950.D
 Acq: 09 Oct 2019 18:05

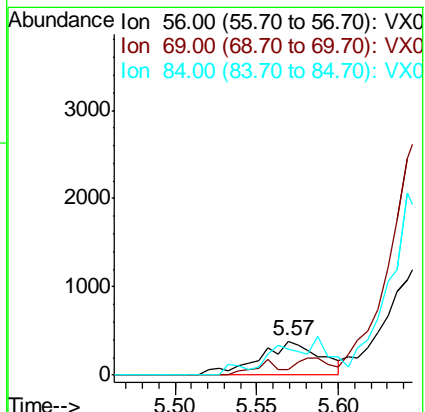
Instrument :
 MSVOA_X
 ClientSampled :

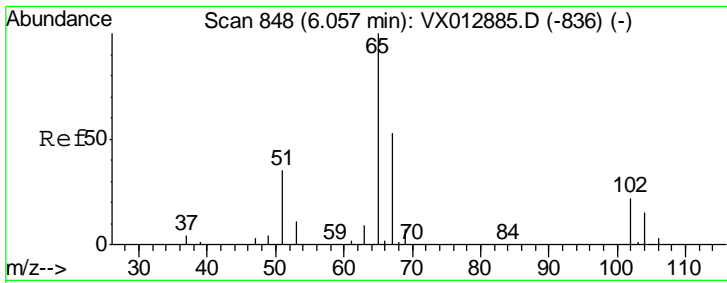
Tgt Ion	Resp	Lower	Upper
49	100		
129	0.0	0.0	4.2
130	0.0	62.1	93.1#



#31
 Cyclohexane
 Concen: 0.319 ug/l
 RT: 5.57 min Scan# 768
 Delta R.T. 0.00 min
 Lab File: VX012950.D
 Acq: 09 Oct 2019 18:05

Tgt Ion	Resp	Lower	Upper
56	100		
69	16.8	25.2	37.8#
84	76.5	71.3	106.9

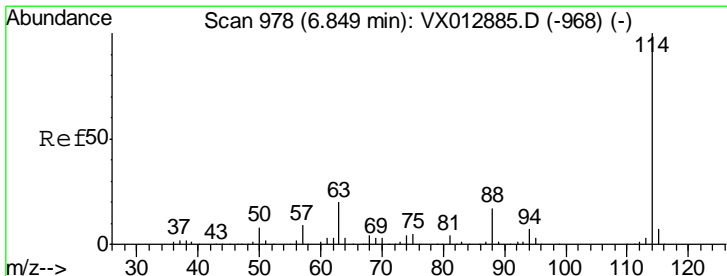
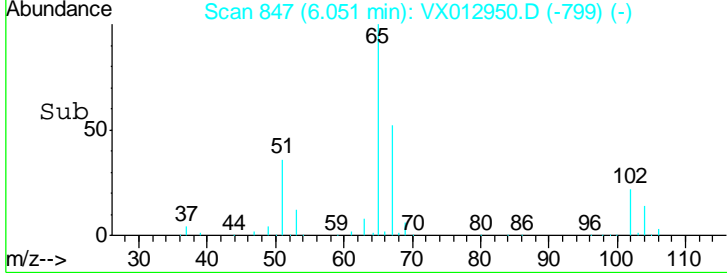
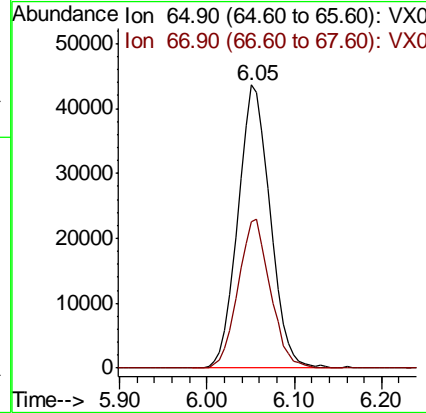
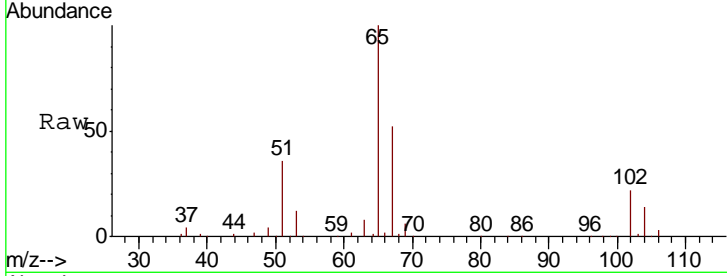




#33
 1,2-Dichloroethane-d4
 Concen: 51.978 ug/l
 RT: 6.05 min Scan# 847
 Delta R.T. -0.01 min
 Lab File: VX012950.D
 Acq: 09 Oct 2019 18:05

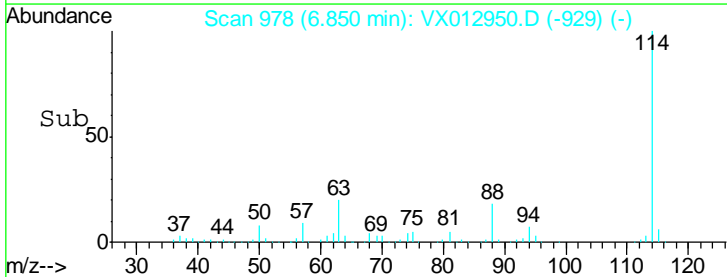
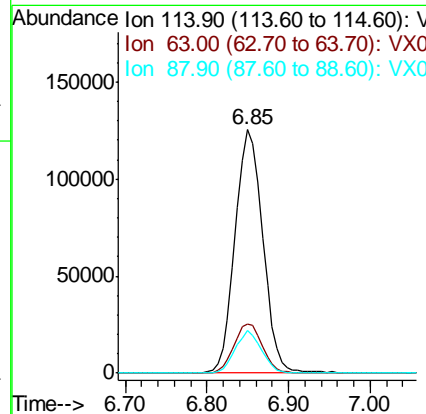
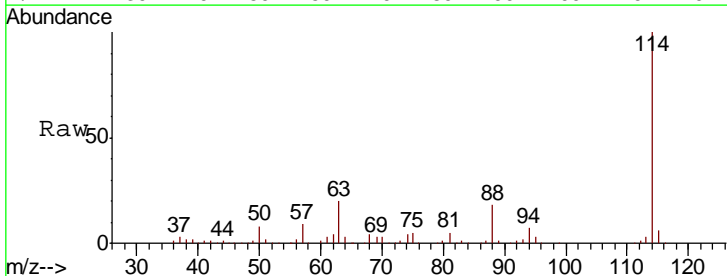
Instrument :
 MSVOA_X
 ClientSampled :

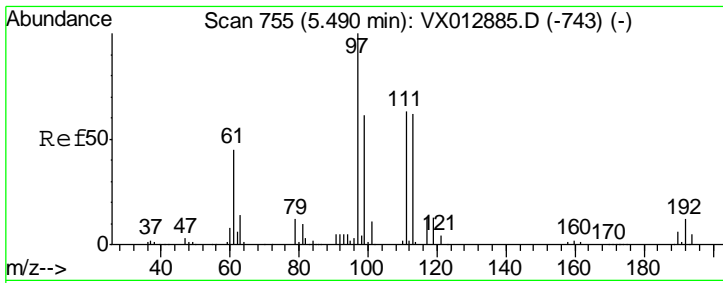
Tgt Ion	Resp	Lower	Upper
65	111781		
67	52.5	0.0	104.4



#34
 1,4-Difluorobenzene
 Concen: 50.000 ug/l
 RT: 6.85 min Scan# 978
 Delta R.T. 0.00 min
 Lab File: VX012950.D
 Acq: 09 Oct 2019 18:05

Tgt Ion	Resp	Lower	Upper
114	294959		
63	20.3	0.0	40.8
88	17.6	0.0	33.8

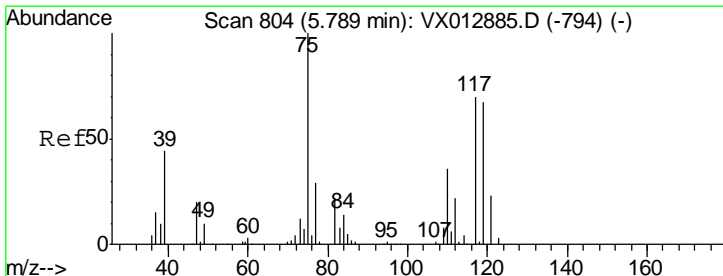
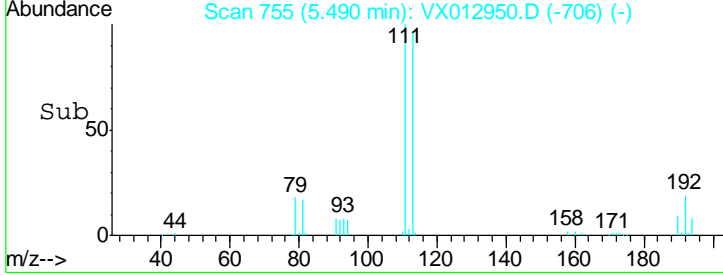
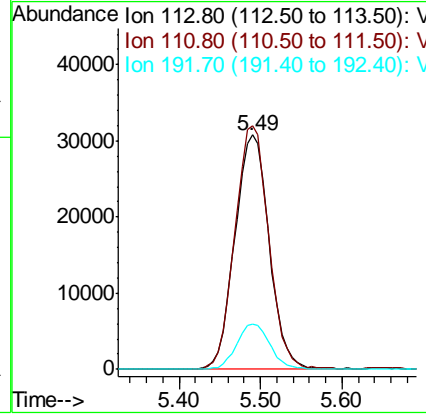
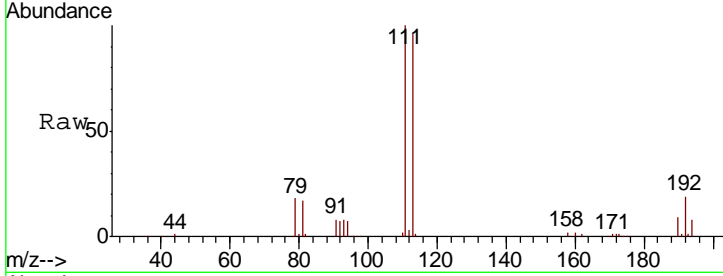




#35
 Dibromofluoromethane
 Concen: 52.889 ug/l
 RT: 5.49 min Scan# 755
 Delta R.T. 0.00 min
 Lab File: VX012950.D
 Acq: 09 Oct 2019 18:05

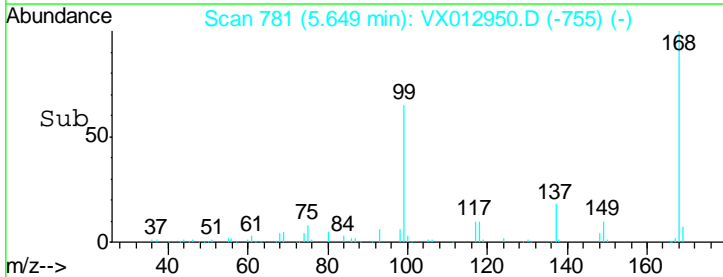
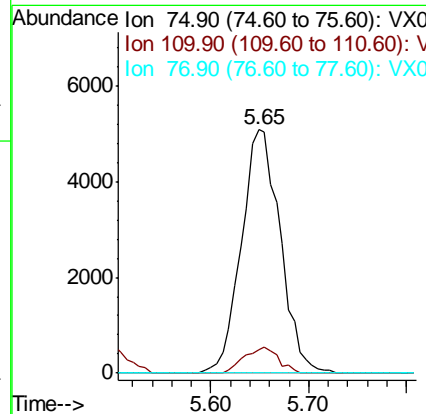
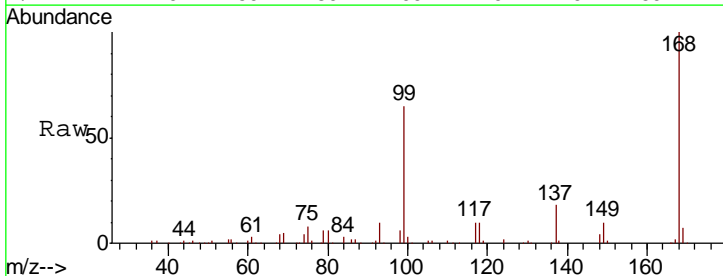
Instrument :
 MSVOA_X
 ClientSampled :

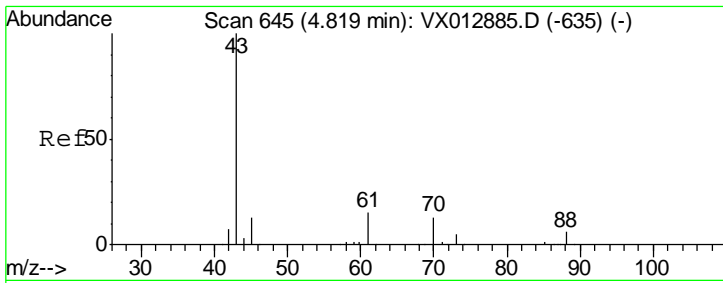
Tgt Ion	Resp	Lower	Upper
113	100		
111	102.2	83.2	124.8
192	18.9	15.4	23.2



#36
 1,1-Dichloropropene
 Concen: 5.402 ug/l
 RT: 5.65 min Scan# 781
 Delta R.T. -0.14 min
 Lab File: VX012950.D
 Acq: 09 Oct 2019 18:05

Tgt Ion	Resp	Lower	Upper
75	100		
110	9.4	17.6	52.9#
77	0.0	24.4	36.6#

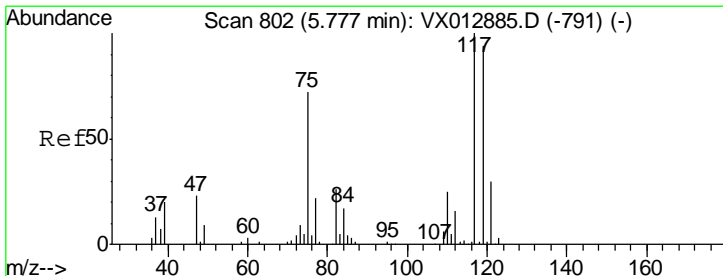
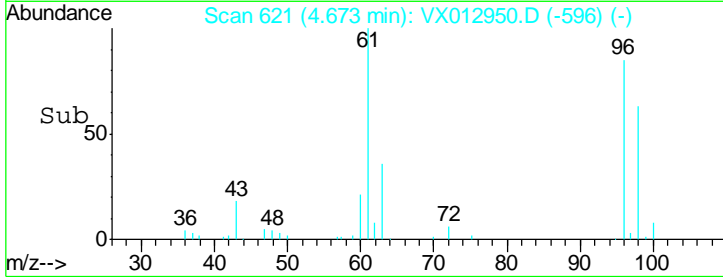
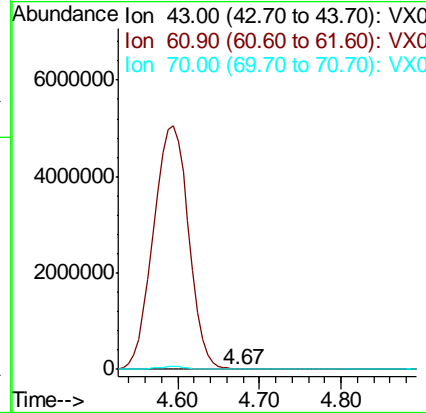
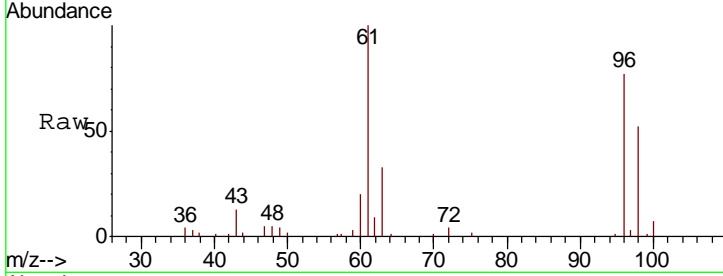




#37
 Ethyl Acetate
 Concen: 1.976 ug/l
 RT: 4.67 min Scan# 621
 Delta R.T. -0.15 min
 Lab File: VX012950.D
 Acq: 09 Oct 2019 18:05

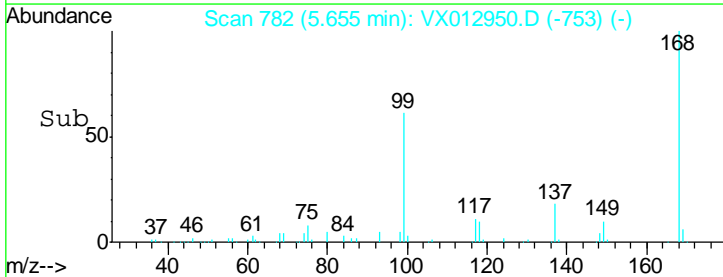
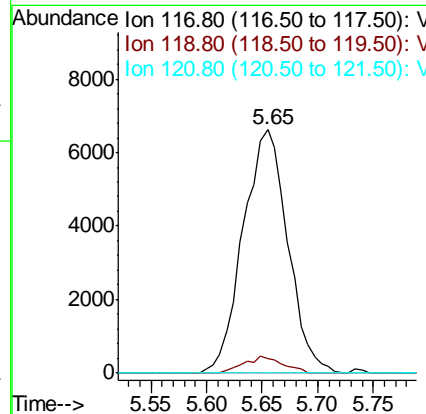
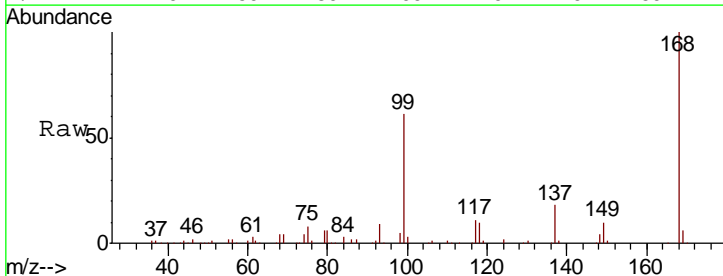
Instrument :
 MSVOA_X
 ClientSampled :

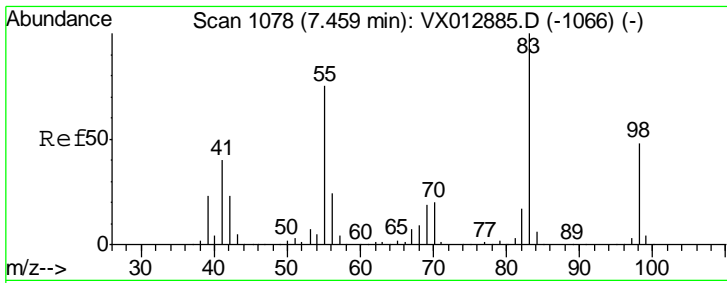
Tgt Ion	Resp	Lower	Upper
43	100		
61	0.0	11.4	17.0#
70	0.0	9.8	14.6#



#38
 Carbon Tetrachloride
 Concen: 7.297 ug/l
 RT: 5.65 min Scan# 782
 Delta R.T. -0.12 min
 Lab File: VX012950.D
 Acq: 09 Oct 2019 18:05

Tgt Ion	Resp	Lower	Upper
117	100		
119	5.7	74.5	111.7#
121	0.0	24.2	36.4#

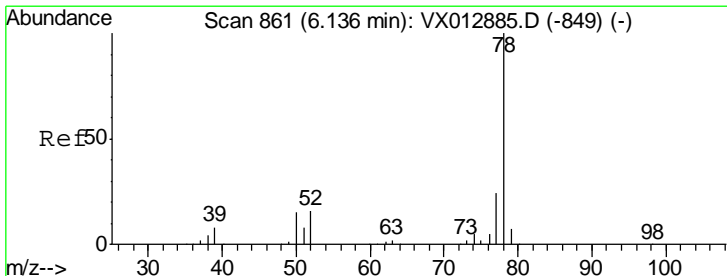
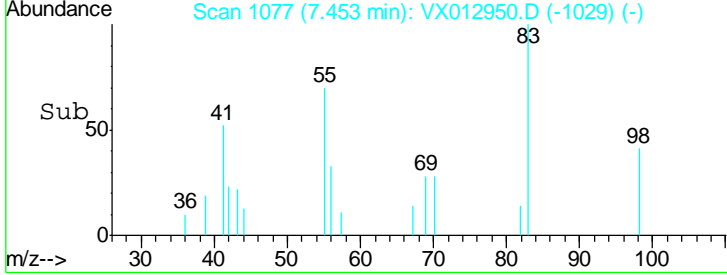
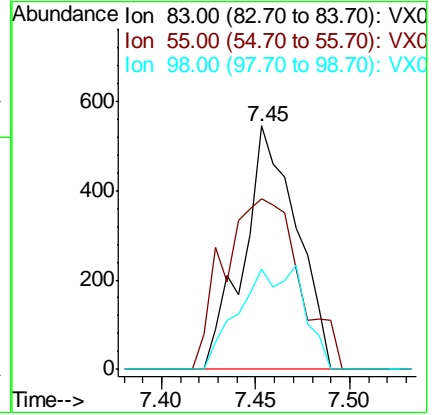
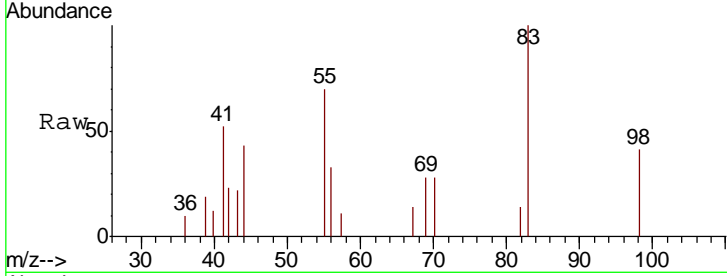




#39
 Methylcyclohexane
 Concen: 0.339 ug/l
 RT: 7.45 min Scan# 1077
 Delta R.T. -0.01 min
 Lab File: VX012950.D
 Acq: 09 Oct 2019 18:05

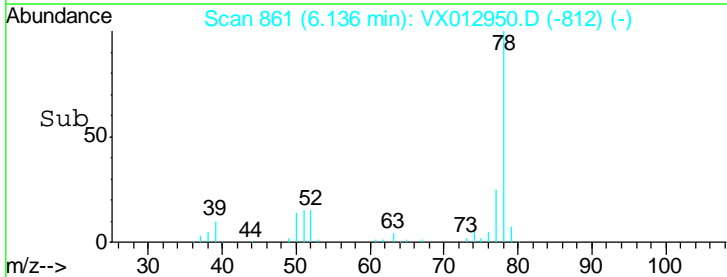
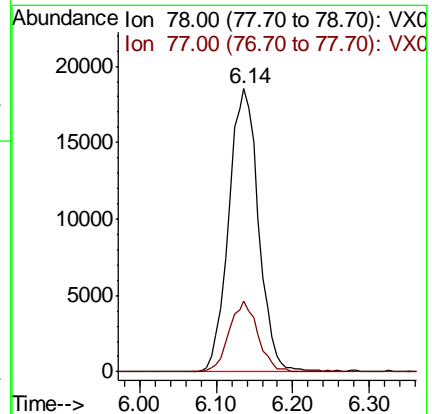
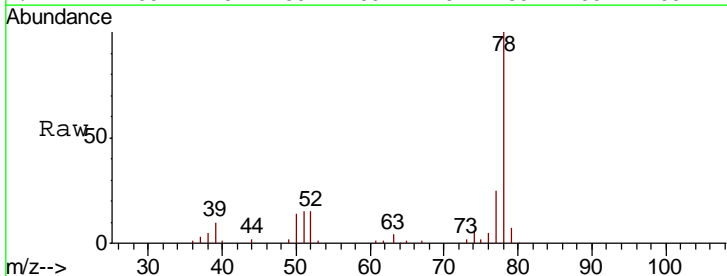
Instrument :
 MSVOA_X
 ClientSampled :

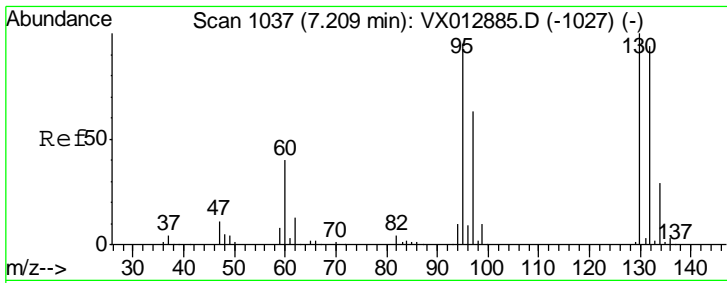
Tgt Ion	Resp	Lower	Upper
83	1065		
55	70.4	60.2	90.4
98	41.4	38.5	57.7



#40
 Benzene
 Concen: 6.514 ug/l
 RT: 6.14 min Scan# 861
 Delta R.T. 0.00 min
 Lab File: VX012950.D
 Acq: 09 Oct 2019 18:05

Tgt Ion	Resp	Lower	Upper
78	49892		
77	25.1	19.0	28.4

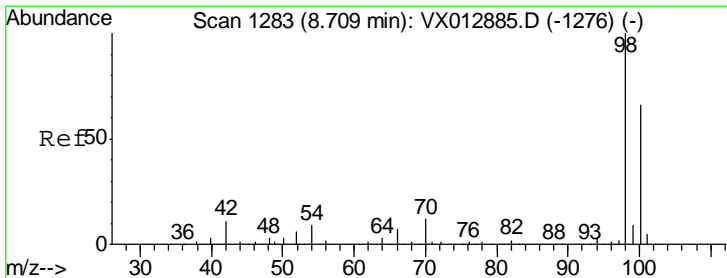
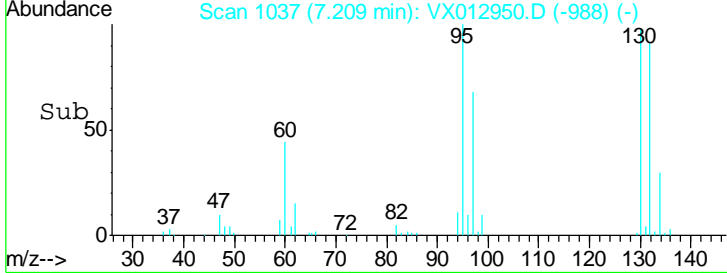
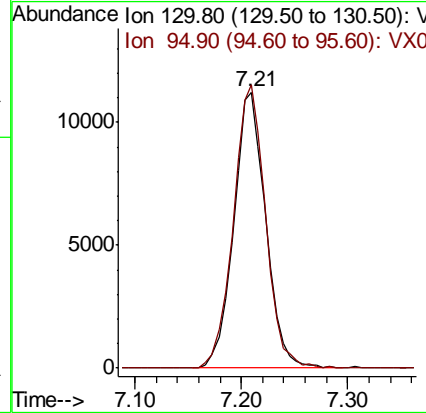
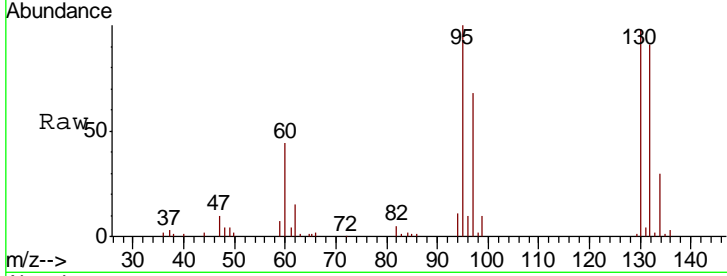




#44
 Trichloroethene
 Concen: 11.072 ug/l
 RT: 7.21 min Scan# 1037
 Delta R.T. 0.00 min
 Lab File: VX012950.D
 Acq: 09 Oct 2019 18:05

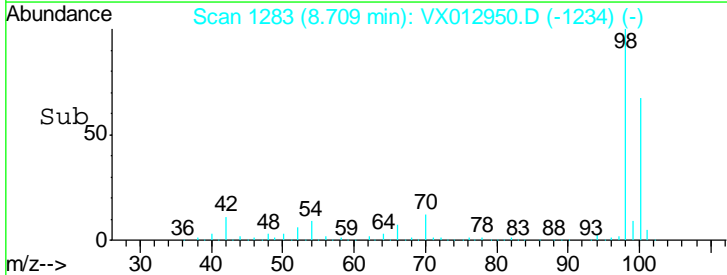
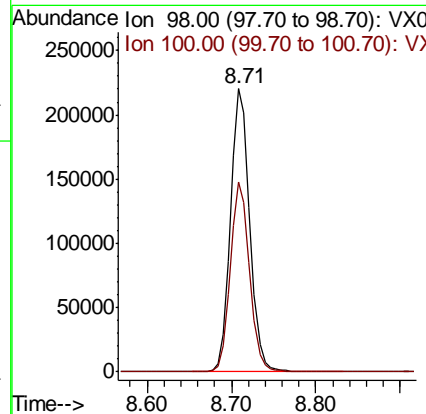
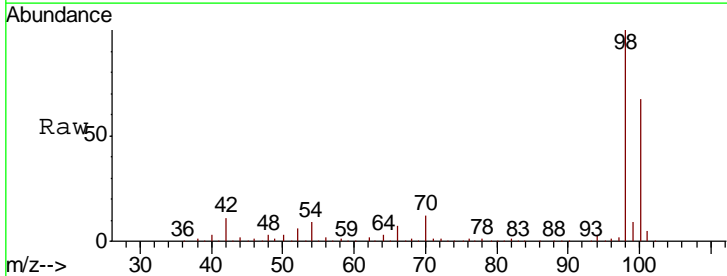
Instrument :
 MSVOA_X
 ClientSampled :

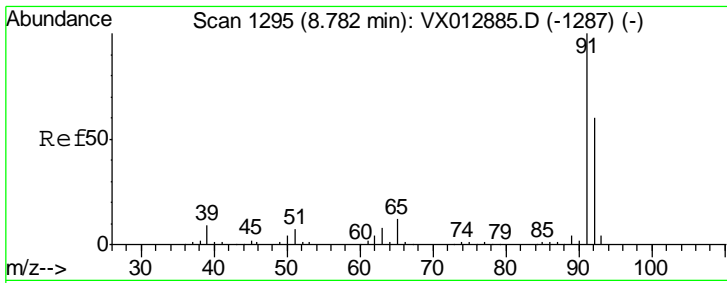
Tgt Ion	Resp	Lower	Upper
130	100		
95	102.4	0.0	189.2



#50
 Toluene-d8
 Concen: 52.310 ug/l
 RT: 8.71 min Scan# 1283
 Delta R.T. 0.00 min
 Lab File: VX012950.D
 Acq: 09 Oct 2019 18:05

Tgt Ion	Resp	Lower	Upper
98	100		
100	66.8	53.4	80.2

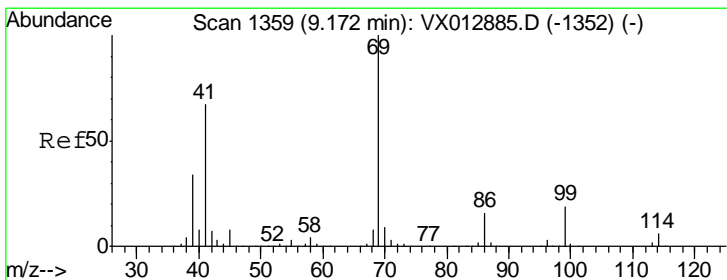
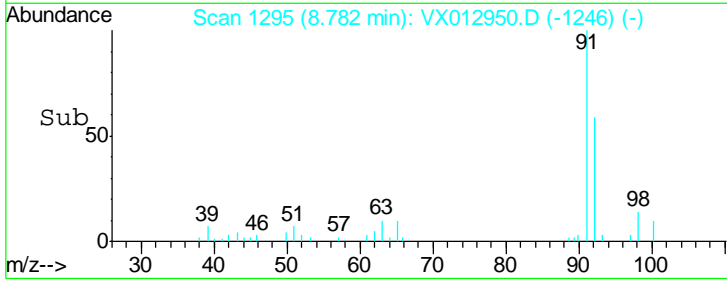
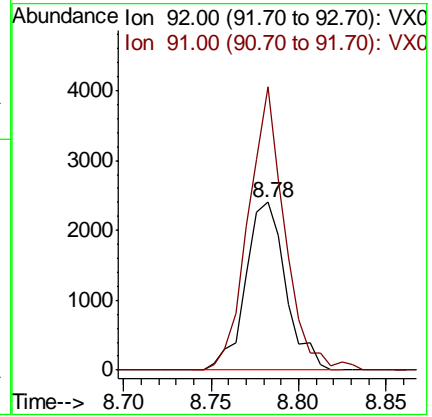
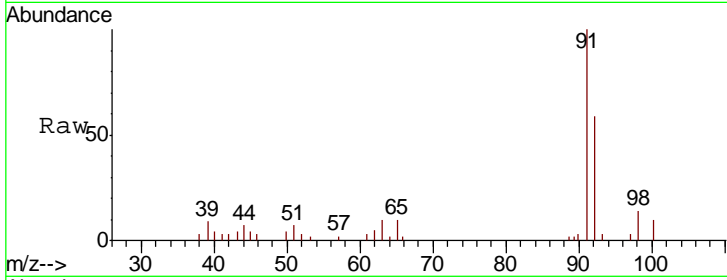




#52
 Toluene
 Concen: 0.785 ug/l
 RT: 8.78 min Scan# 1295
 Delta R.T. 0.00 min
 Lab File: VX012950.D
 Acq: 09 Oct 2019 18:05

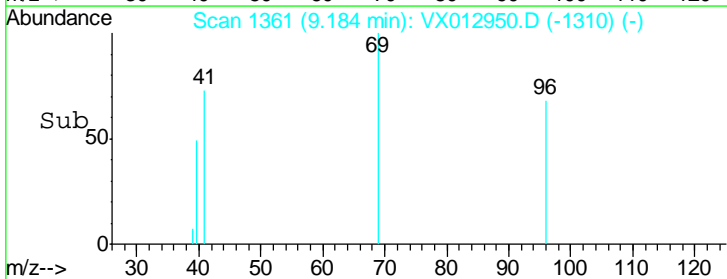
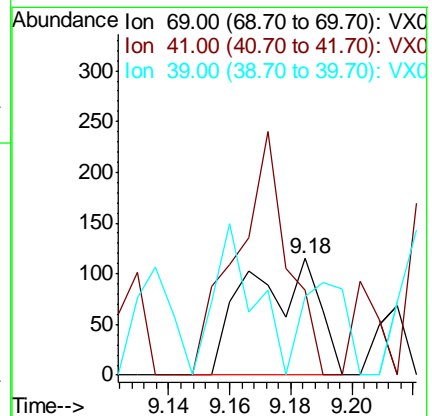
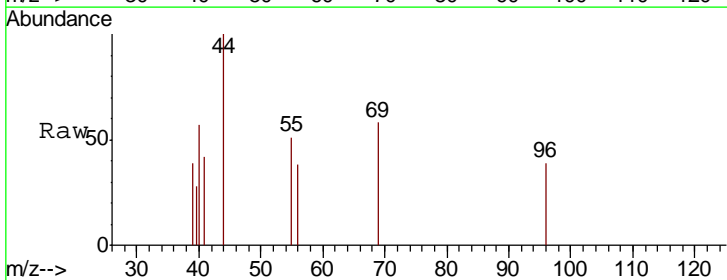
Instrument : MSVOA_X
 ClientSampled :

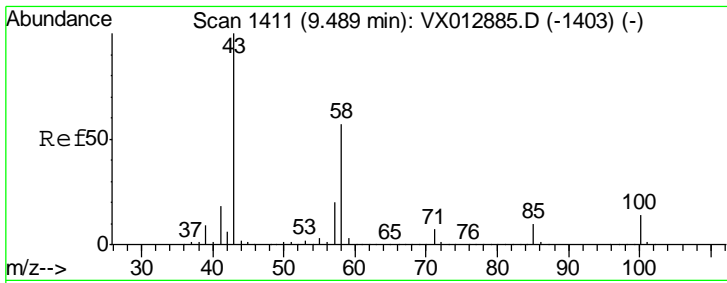
Tgt Ion	Resp	Lower	Upper
92	3846		
92	100		
91	153.4	135.9	203.9



#56
 Ethyl methacrylate
 Concen: 1.882 ug/l
 RT: 9.18 min Scan# 1361
 Delta R.T. 0.01 min
 Lab File: VX012950.D
 Acq: 09 Oct 2019 18:05

Tgt Ion	Resp	Lower	Upper
69	183		
69	100		
41	151.9	52.1	78.1#
39	50.8	27.8	41.8#

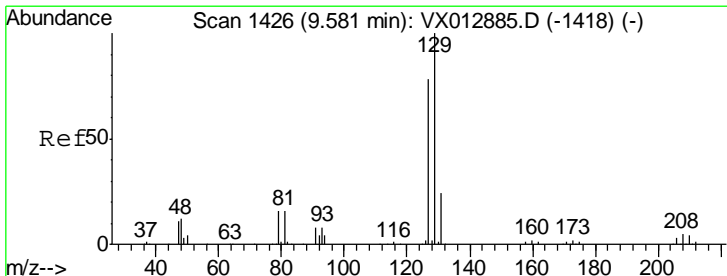
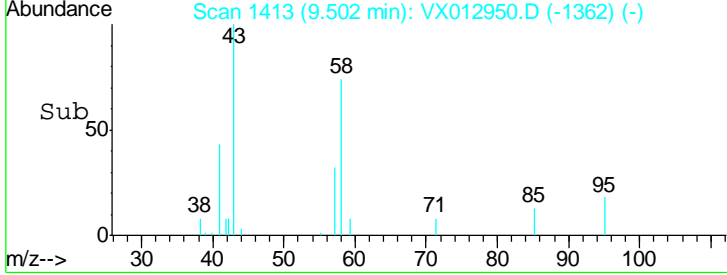
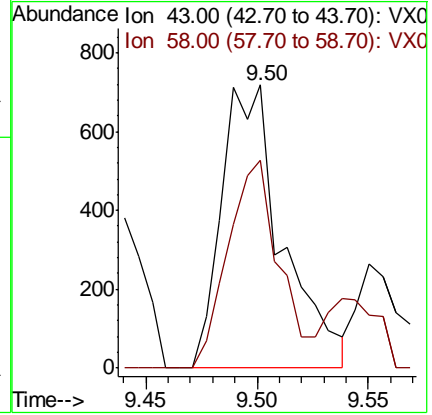
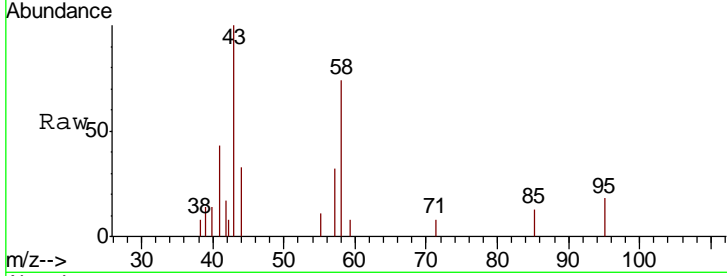




#59
 2-Hexanone
 Concen: 0.599 ug/l
 RT: 9.50 min Scan# 1413
 Delta R.T. 0.01 min
 Lab File: VX012950.D
 Acq: 09 Oct 2019 18:05

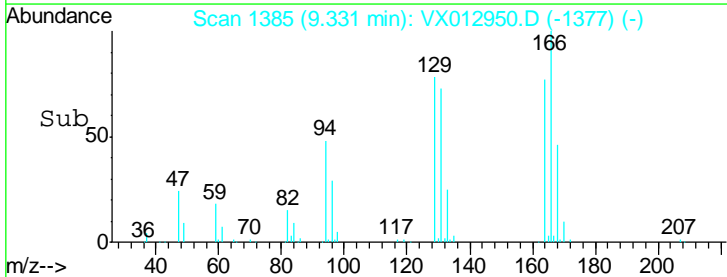
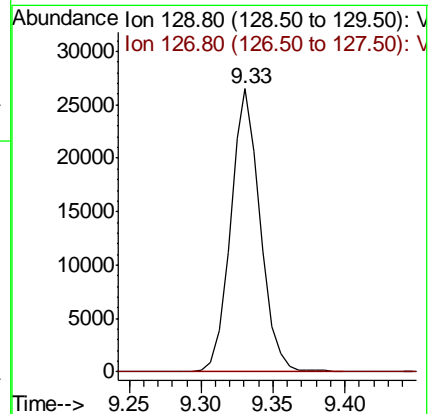
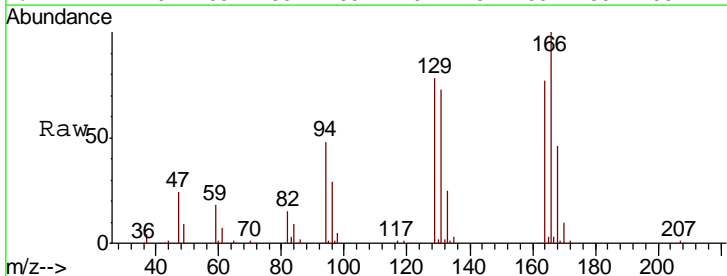
Instrument :
 MSVOA_X
 ClientSampled :

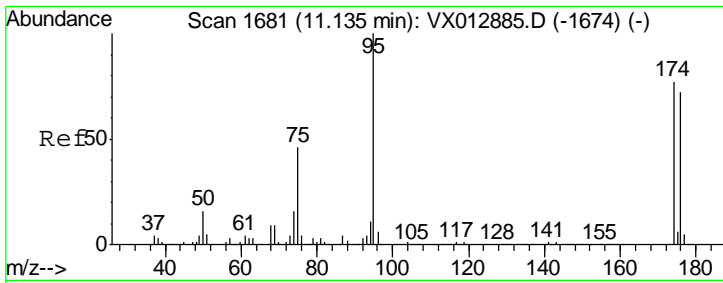
Tgt Ion	Resp	Lower	Upper
43	100		
58	62.8	28.1	84.3



#60
 Dibromochloromethane
 Concen: 18.772 ug/l
 RT: 9.33 min Scan# 1385
 Delta R.T. -0.25 min
 Lab File: VX012950.D
 Acq: 09 Oct 2019 18:05

Tgt Ion	Resp	Lower	Upper
129	100		
127	0.0	38.9	116.7#

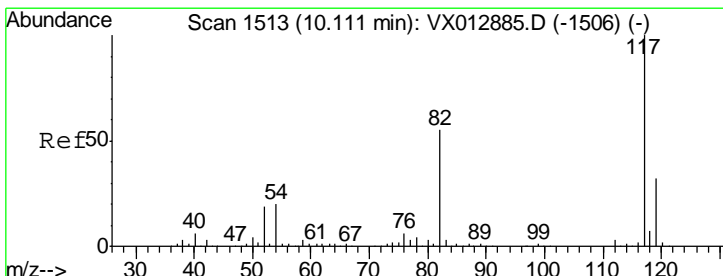
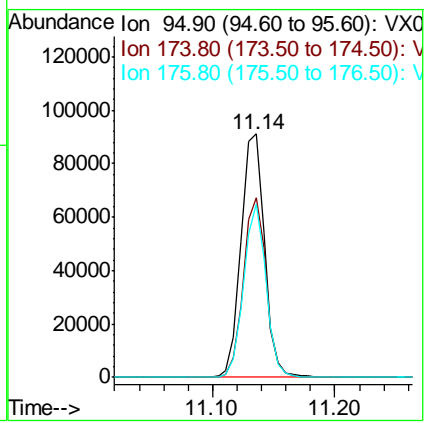
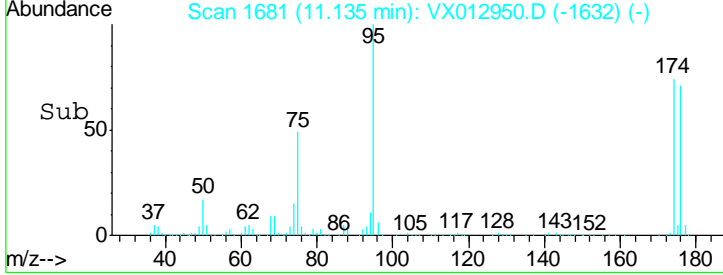
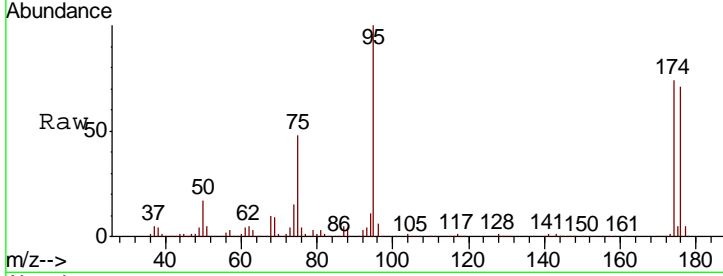




#62
 4-Bromofluorobenzene
 Concen: 47.195 ug/l
 RT: 11.14 min Scan# 1681
 Delta R.T. 0.00 min
 Lab File: VX012950.D
 Acq: 09 Oct 2019 18:05

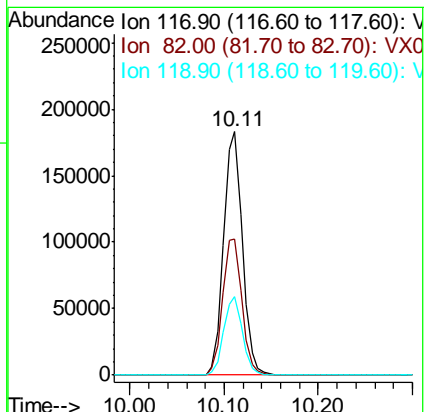
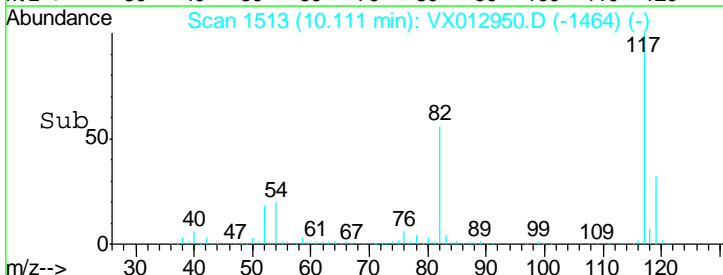
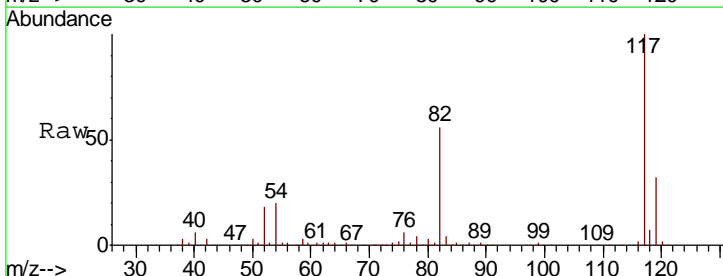
Instrument :
 MSVOA_X
 ClientSampled :

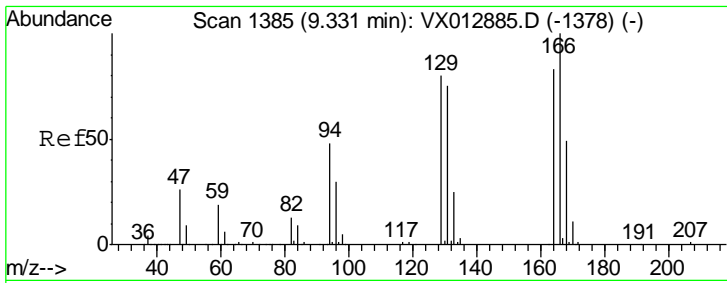
Tgt Ion	Resp	Lower	Upper
95	121082		
174	71.6	0.0	143.4
176	67.7	0.0	136.0



#63
 Chlorobenzene-d5
 Concen: 50.000 ug/l
 RT: 10.11 min Scan# 1513
 Delta R.T. 0.00 min
 Lab File: VX012950.D
 Acq: 09 Oct 2019 18:05

Tgt Ion	Resp	Lower	Upper
117	253955		
82	55.7	44.1	66.1
119	32.0	25.8	38.8

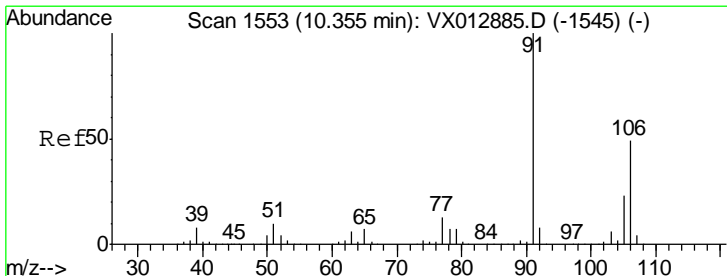
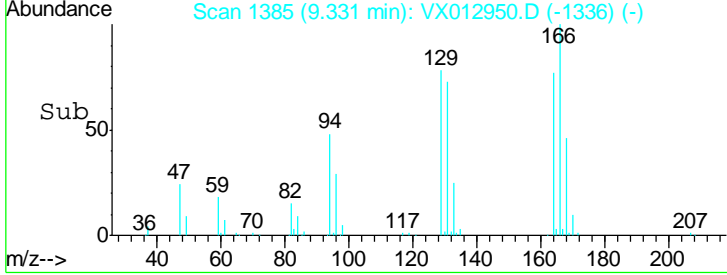
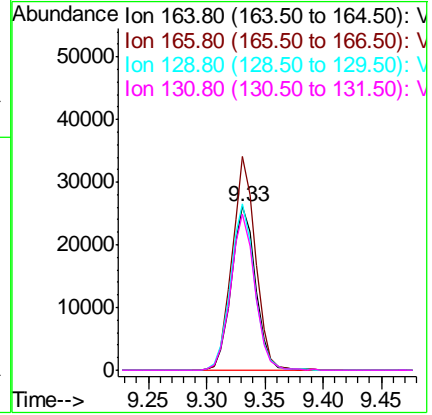
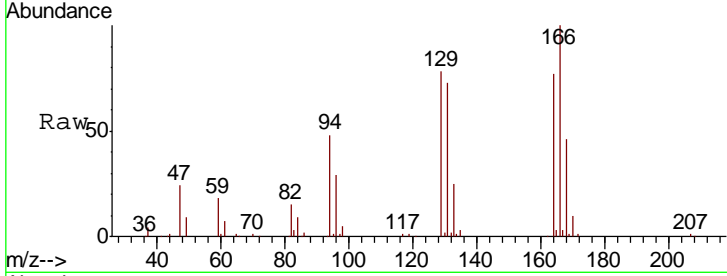




#64
 Tetrachloroethene
 Concen: 21.341 ug/l
 RT: 9.33 min Scan# 1385
 Delta R.T. 0.00 min
 Lab File: VX012950.D
 Acq: 09 Oct 2019 18:05

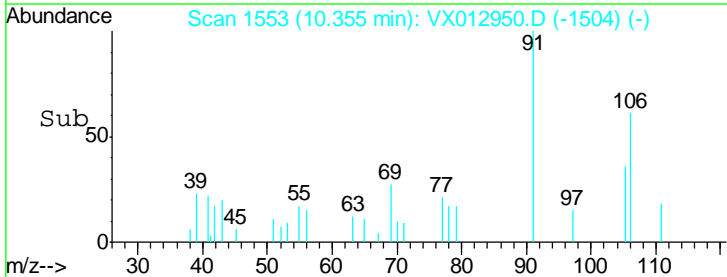
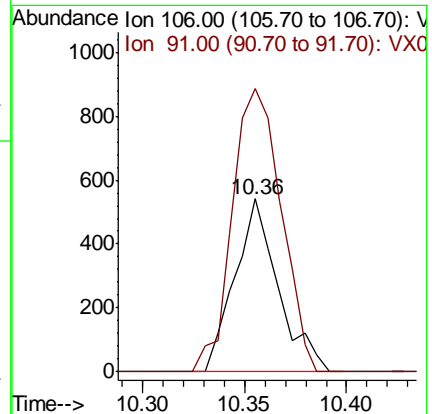
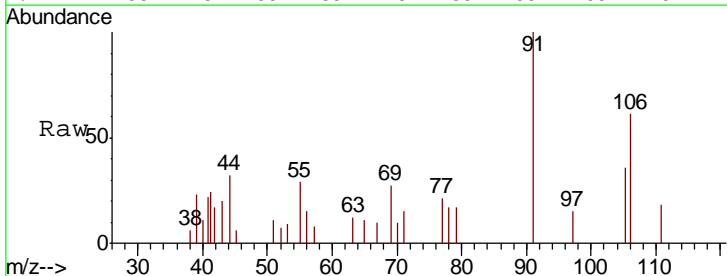
Instrument :
 MSVOA_X
 ClientSampled :

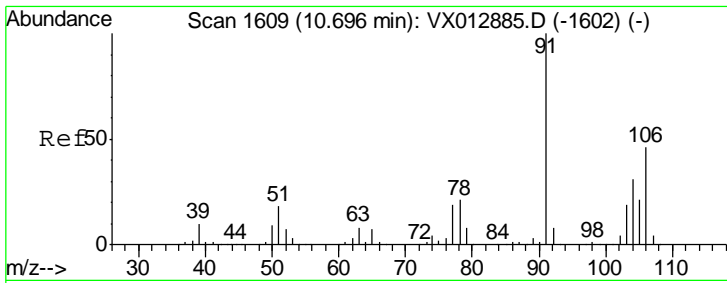
Tgt Ion	Resp	Lower	Upper
164	100		
166	130.4	96.9	145.3
129	101.4	77.9	116.9
131	95.7	72.7	109.1



#68
 m/p-Xylenes
 Concen: 0.239 ug/l
 RT: 10.36 min Scan# 1553
 Delta R.T. 0.00 min
 Lab File: VX012950.D
 Acq: 09 Oct 2019 18:05

Tgt Ion	Resp	Lower	Upper
106	100		
91	184.5	165.3	247.9

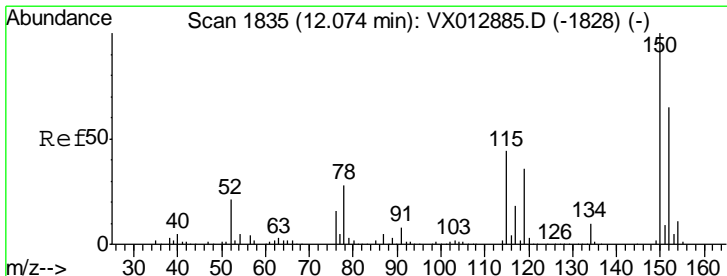
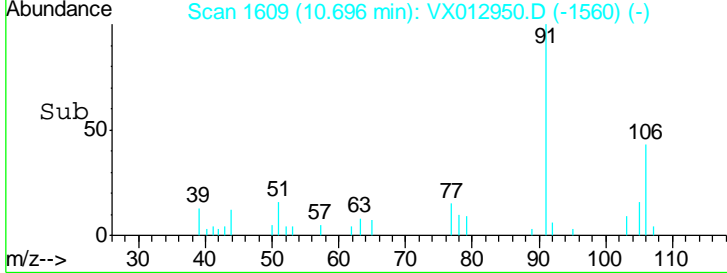
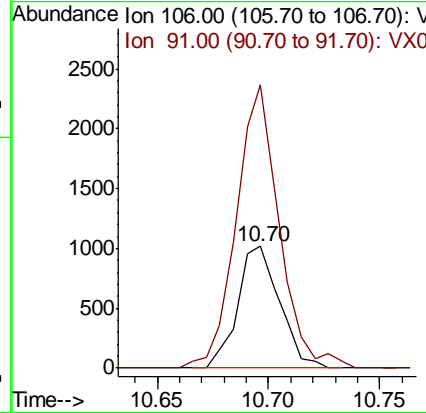
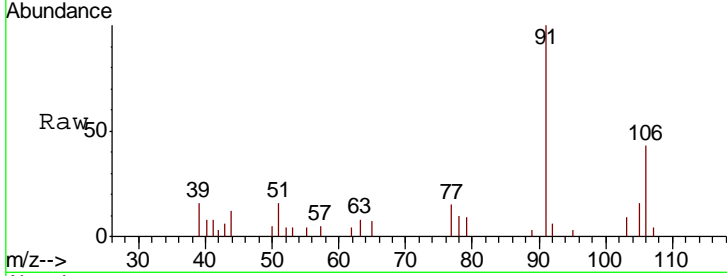




#69
 o-Xylene
 Concen: 0.409 ug/l
 RT: 10.70 min Scan# 1609
 Delta R.T. 0.00 min
 Lab File: VX012950.D
 Acq: 09 Oct 2019 18:05

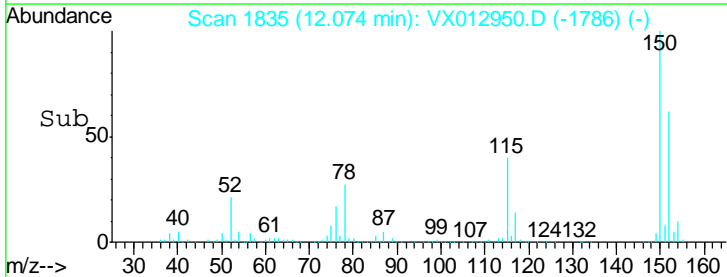
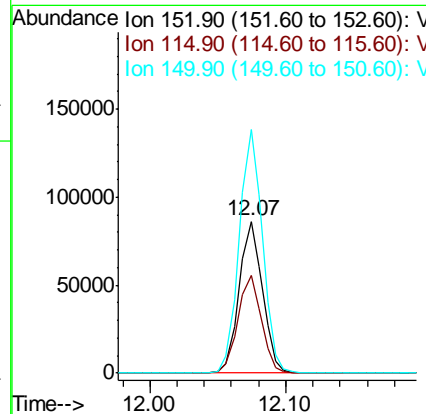
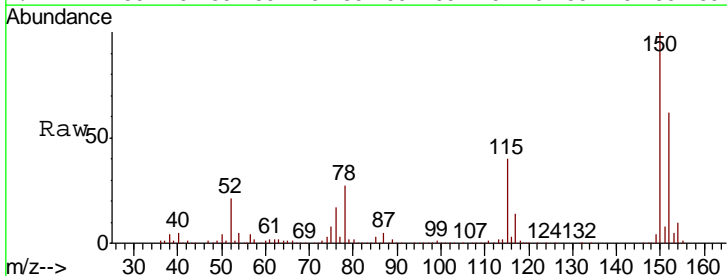
Instrument :
 MSVOA_X
 ClientSampled :

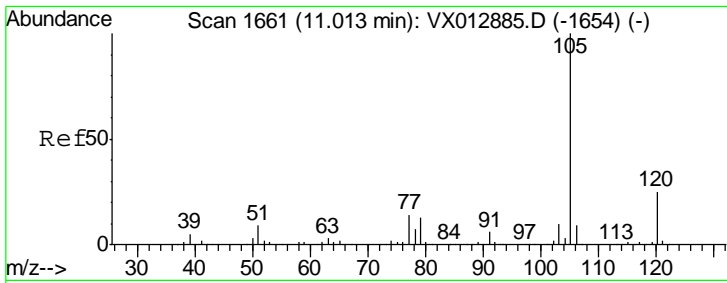
Tot Ion:106 Resp: 1336
 Ion Ratio Lower Upper
 106 100
 91 238.2 109.1 327.3



#72
 1,4-Dichlorobenzene-d4
 Concen: 50.000 ug/l
 RT: 12.07 min Scan# 1835
 Delta R.T. 0.00 min
 Lab File: VX012950.D
 Acq: 09 Oct 2019 18:05

Tgt Ion:152 Resp: 102826
 Ion Ratio Lower Upper
 152 100
 115 64.9 44.5 133.5
 150 160.3 0.0 353.4

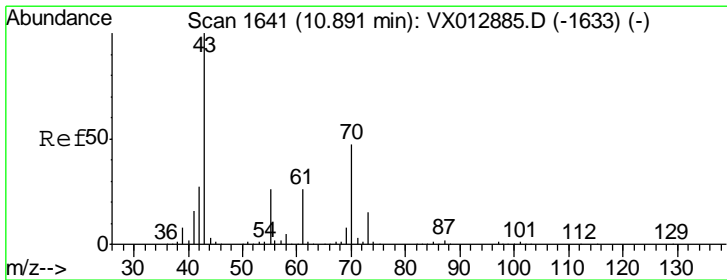
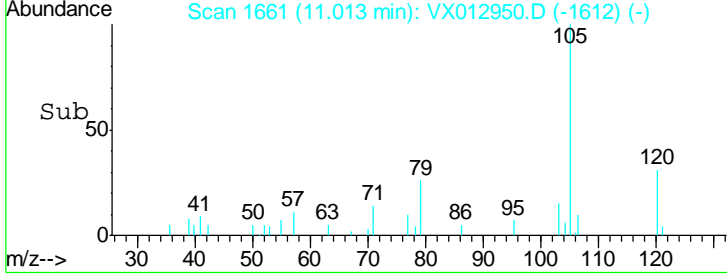
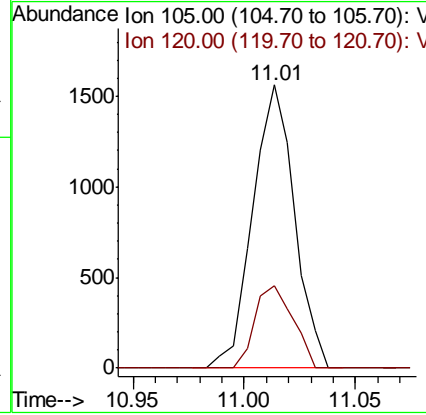
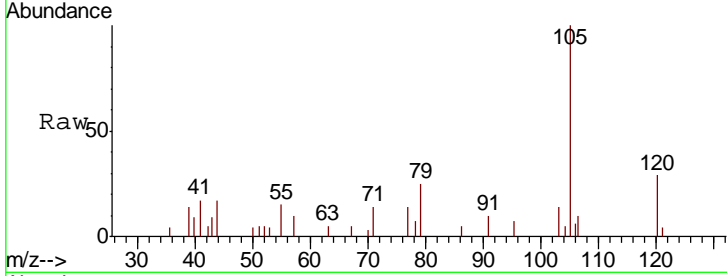




#73
 Isopropylbenzene
 Concen: 0.270 ug/l
 RT: 11.01 min Scan# 1661
 Delta R.T. 0.00 min
 Lab File: VX012950.D
 Acq: 09 Oct 2019 18:05

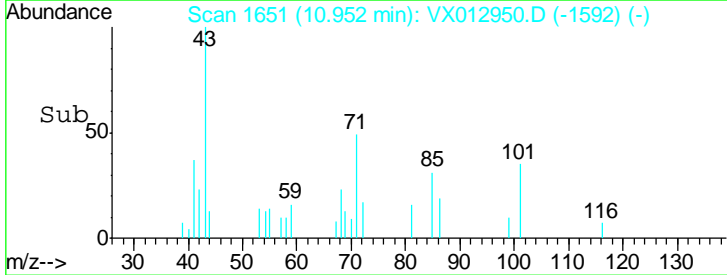
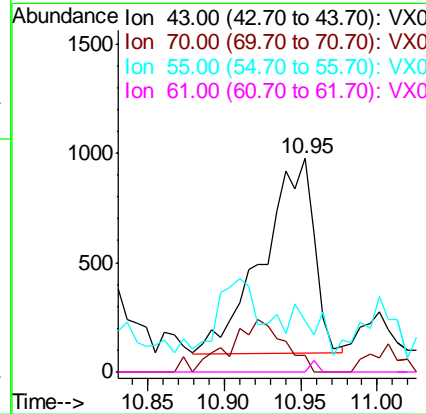
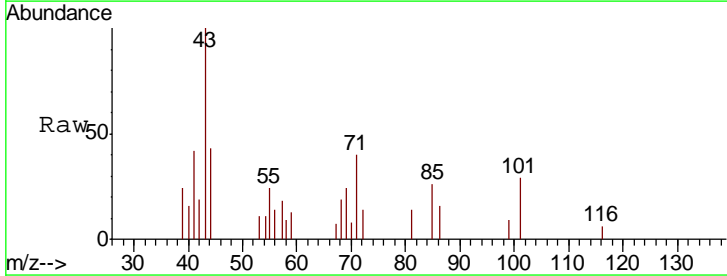
Instrument : MSVOA_X
 ClientSampled :

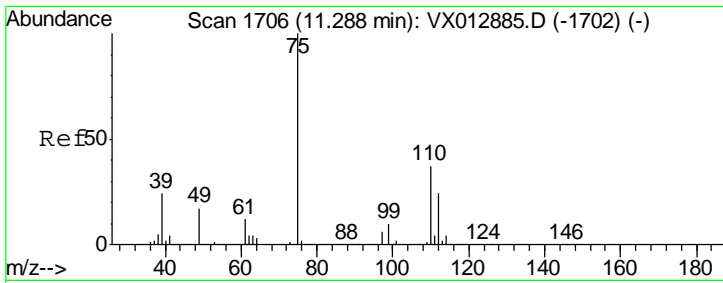
Tgt Ion	Resp	Lower	Upper
105	100		
120	26.6	13.0	39.0



#74
 N-amyl acetate
 Concen: 0.638 ug/l
 RT: 10.95 min Scan# 1651
 Delta R.T. 0.06 min
 Lab File: VX012950.D
 Acq: 09 Oct 2019 18:05

Tgt Ion	Resp	Lower	Upper
43	100		
70	0.0	36.4	54.6#
55	0.0	20.2	30.2#
61	0.0	20.5	30.7#

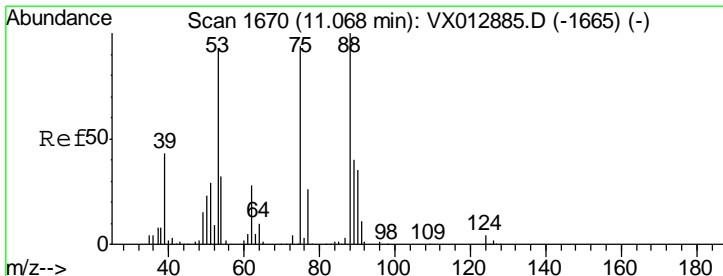
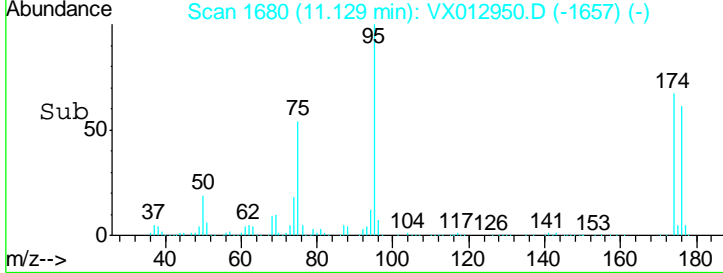
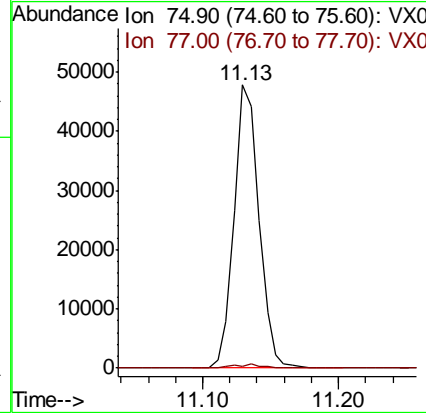
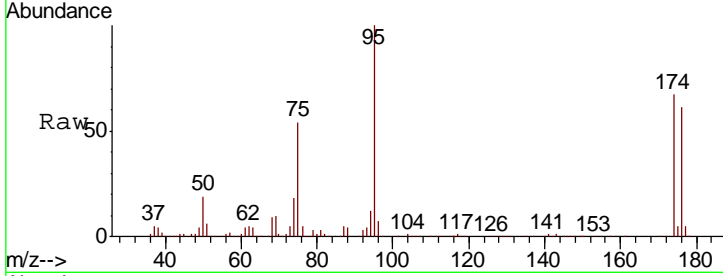




#76
 1,2,3-Trichloropropane
 Concen: 26.745 ug/l
 RT: 11.13 min Scan# 1680
 Delta R.T. -0.16 min
 Lab File: VX012950.D
 Acq: 09 Oct 2019 18:05

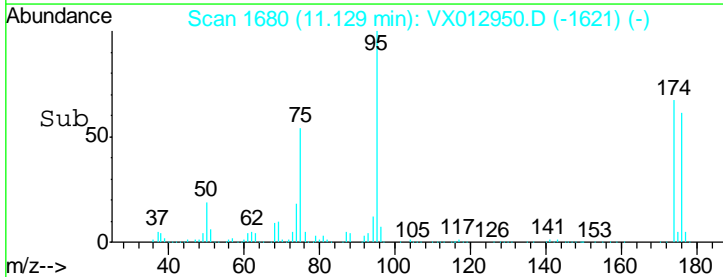
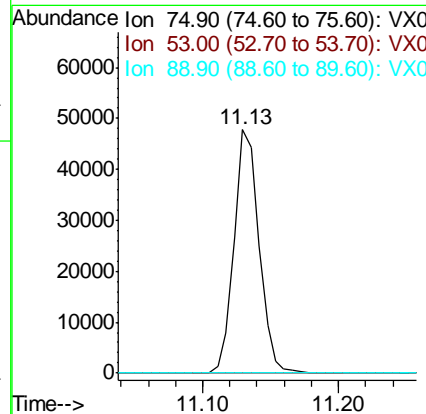
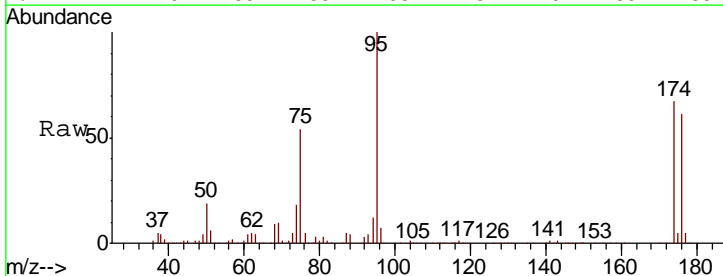
Instrument : MSVOA_X
 ClientSampled :

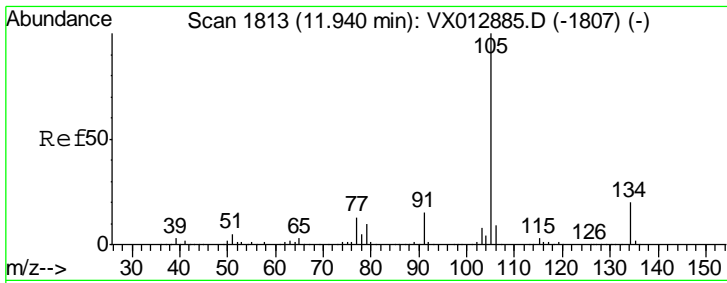
Tgt Ion: 75 Resp: 60997
 Ion Ratio Lower Upper
 75 100
 77 1.4 22.9 68.8#



#81
 trans-1,4-Dichloro-2-butene
 Concen: 67.241 ug/l
 RT: 11.13 min Scan# 1680
 Delta R.T. 0.06 min
 Lab File: VX012950.D
 Acq: 09 Oct 2019 18:05

Tgt Ion: 75 Resp: 60997
 Ion Ratio Lower Upper
 75 100
 53 0.4 78.5 117.7#
 89 0.1 37.4 56.2#



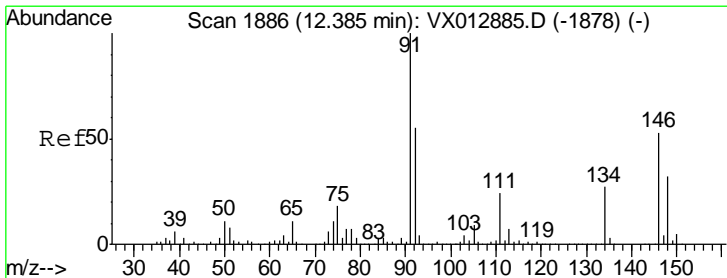
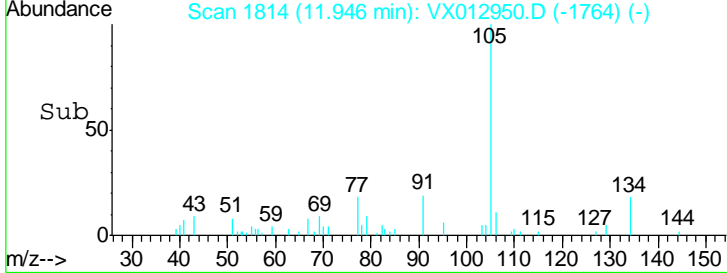
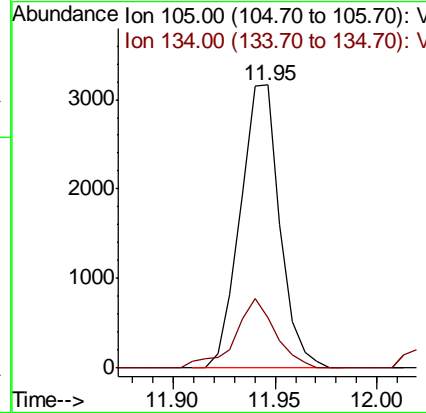
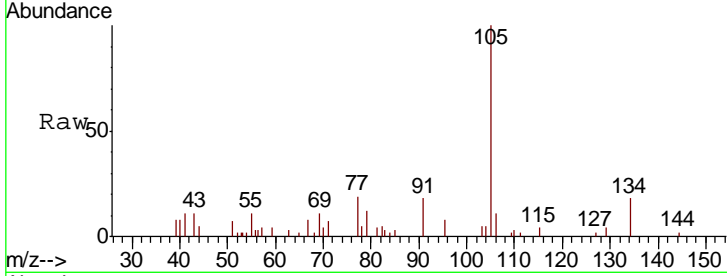


#85
 sec-Butylbenzene
 Concen: 0.595 ug/l
 RT: 11.95 min Scan# 1814
 Delta R.T. 0.01 min
 Lab File: VX012950.D
 Acq: 09 Oct 2019 18:05

Instrument : MSVOA_X
 ClientSampled :

Tgt Ion: 105 Resp: 4242

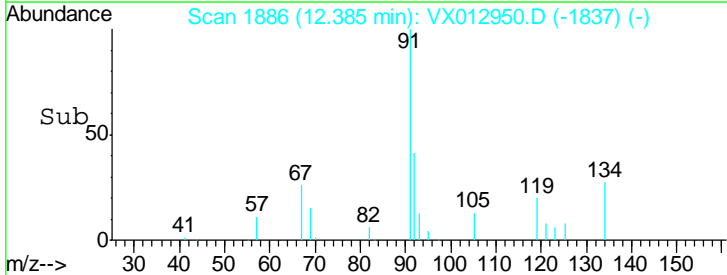
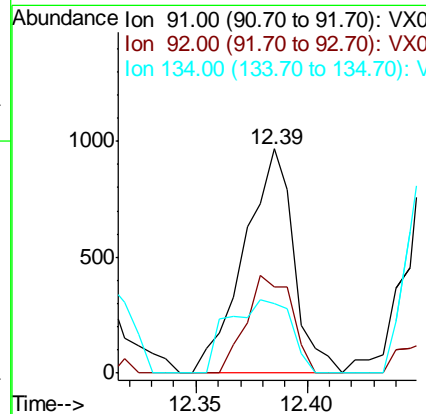
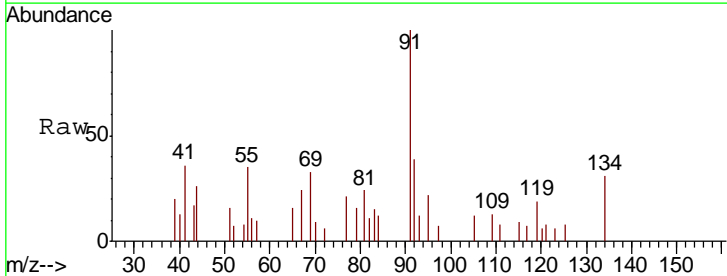
Ion	Ratio	Lower	Upper
105	100		
134	25.0	10.0	30.0

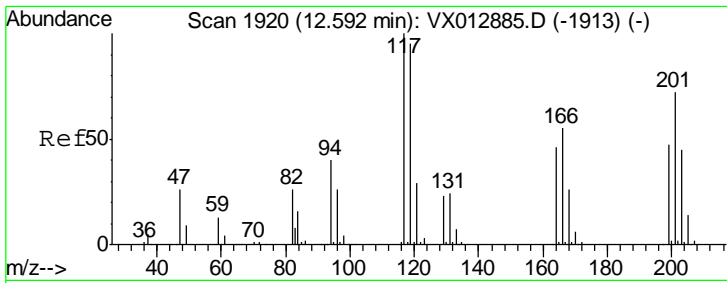


#89
 n-Butylbenzene
 Concen: 0.271 ug/l
 RT: 12.39 min Scan# 1886
 Delta R.T. 0.00 min
 Lab File: VX012950.D
 Acq: 09 Oct 2019 18:05

Tgt Ion: 91 Resp: 1505

Ion	Ratio	Lower	Upper
91	100		
92	39.7	27.5	82.5
134	41.2	12.9	38.7#

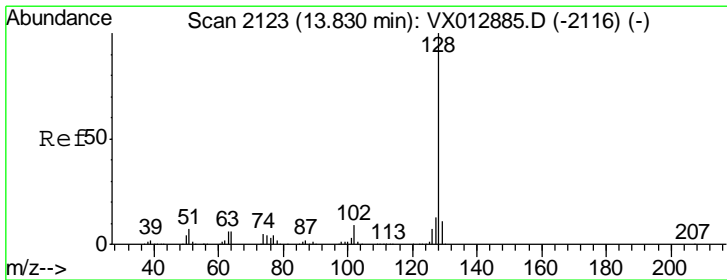
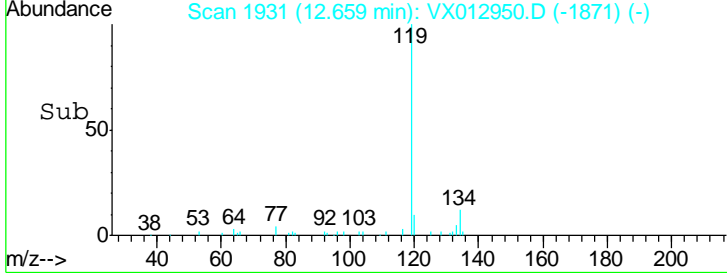
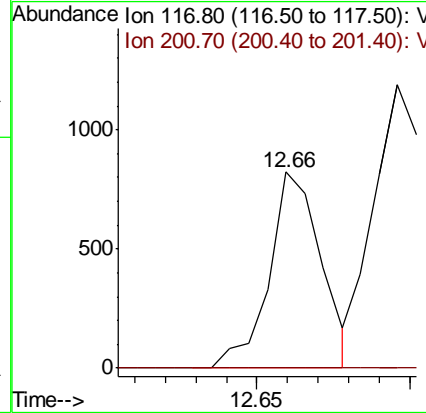
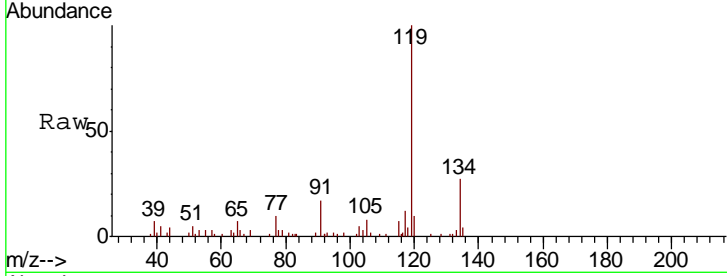




#90
 Hexachloroethane
 Concen: 2.878 ug/l
 RT: 12.66 min Scan# 1931
 Delta R.T. 0.07 min
 Lab File: VX012950.D
 Acq: 09 Oct 2019 18:05

Instrument : MSVOA_X
 ClientSampled :

Tgt Ion	Resp	Lower	Upper
117	100		
201	0.0	36.9	110.7#



#95
 Naphthalene
 Concen: 0.307 ug/l
 RT: 13.83 min Scan# 2123
 Delta R.T. 0.00 min
 Lab File: VX012950.D
 Acq: 09 Oct 2019 18:05

Tgt Ion	Resp	Lower	Upper
128	100		
127	19.2	10.2	15.4#
129	28.3	8.8	13.2#

