

Data Path : Z:\VOASRV\HPCHEM1\MSVOA X\DATA\VX100919\
 Data File : VX012974.D
 Acq On : 10 Oct 2019 04:33
 Operator : JC/SP
 Sample : K5259-06
 Misc : 5.0mL/MSVOA X/WATER
 ALS Vial : 50 Sample Multiplier: 1

Instrument :
 MSVOA_X
 ClientSampled :
 FA19-JMW1982

Quant Time: Oct 10 06:51:29 2019
 Quant Method : Z:\VOASRV\HPCHEM1\MSVOA_X\METHOD\82X100819W.M
 Quant Title : SW846 8260
 QLast Update : Wed Oct 09 01:51:23 2019
 Response via : Initial Calibration

Internal Standards	R.T.	QIon	Response	Conc	Units	Dev(Min)
1) Pentafluorobenzene	5.65	168	176454	50.00	ug/l	0.00
34) 1,4-Difluorobenzene	6.85	114	296367	50.00	ug/l	0.00
63) Chlorobenzene-d5	10.11	117	251236	50.00	ug/l	0.00
72) 1,4-Dichlorobenzene-d4	12.07	152	97222	50.00	ug/l	0.00

System Monitoring Compounds

33) 1,2-Dichloroethane-d4	6.05	65	115802	52.51	ug/l	0.00
Spiked Amount	50.000		Recovery	=	105.02%	
35) Dibromofluoromethane	5.49	113	87189	51.26	ug/l	0.00
Spiked Amount	50.000		Recovery	=	102.52%	
50) Toluene-d8	8.71	98	346574	52.24	ug/l	0.00
Spiked Amount	50.000		Recovery	=	104.48%	
62) 4-Bromofluorobenzene	11.14	95	116511	45.20	ug/l	0.00
Spiked Amount	50.000		Recovery	=	90.40%	

Target Compounds

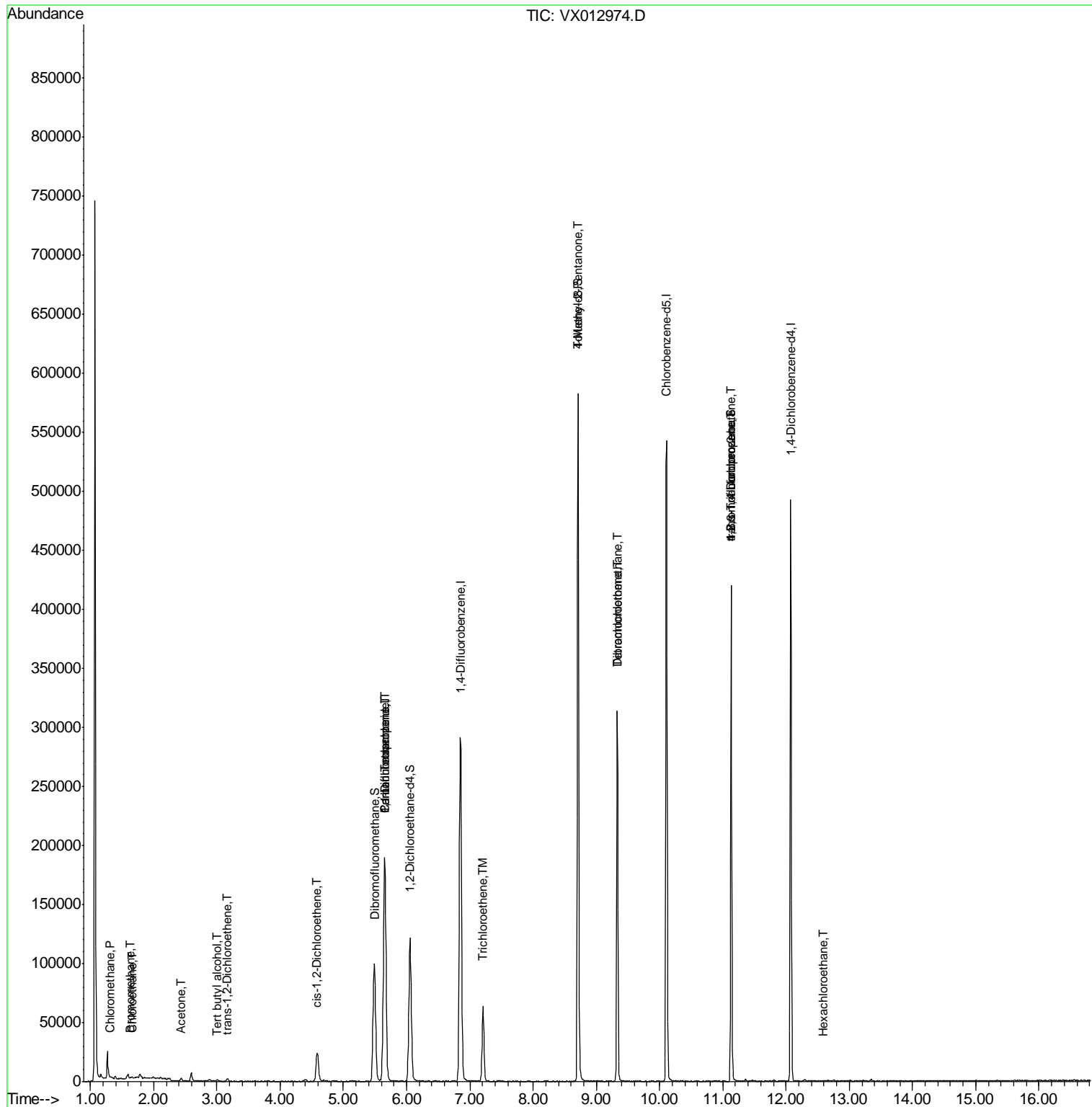
						Qvalue
3) Chloromethane	1.31	50	394	0.201	ug/l #	75
5) Bromomethane	1.64	94	226	0.269	ug/l	93
6) Chloroethane	1.66	64	759	0.978	ug/l #	79
11) Tert butyl alcohol	3.01	59	923	1.579	ug/l #	72
16) Acetone	2.43	43	2136	1.837	ug/l	99
21) trans-1,2-Dichloroethene	3.16	96	449	0.235	ug/l #	79
27) cis-1,2-Dichloroethene	4.58	96	16161	7.336	ug/l	88
28) Bromochloromethane	4.78	49	19	Below Cal	#	13
36) 1,1-Dichloropropene	5.65	75	13909	5.338	ug/l #	50
38) Carbon Tetrachloride	5.65	117	18064	7.122	ug/l #	16
44) Trichloroethene	7.21	130	25006	11.717	ug/l	94
51) 4-Methyl-2-Pentanone	8.72	43	1609	0.552	ug/l #	1
60) Dibromochloromethane	9.33	129	57535	27.406	ug/l #	10
64) Tetrachloroethene	9.33	164	57602	33.056	ug/l	94
76) 1,2,3-Trichloropropane	11.14	75	57785	26.797	ug/l #	32
81) trans-1,4-Dichloro-2-buten	11.14	75	57785	67.364	ug/l #	10
90) Hexachloroethane	12.59	117	55	2.164	ug/l #	13

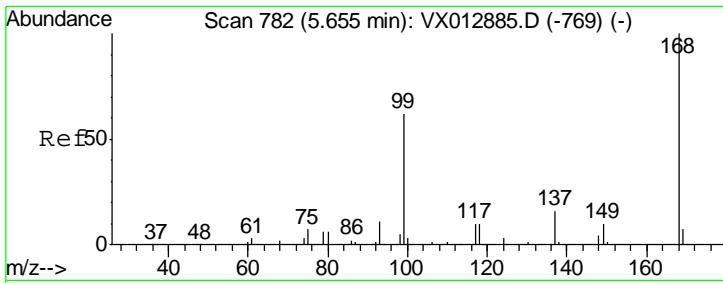
(#) = qualifier out of range (m) = manual integration (+) = signals summed

Data Path : Z:\VOASRV\HPCHEM1\MSVOA X\DATA\VX100919\
 Data File : VX012974.D
 Acq On : 10 Oct 2019 04:33
 Operator : JC/SP
 Sample : K5259-06
 Misc : 5.0mL/MSVOA X/WATER
 ALS Vial : 50 Sample Multiplier: 1

Instrument :
 MSVOA_X
 ClientSampleId :
 FA19-JMW1982

Quant Time: Oct 10 06:51:29 2019
 Quant Method : Z:\VOASRV\HPCHEM1\MSVOA_X\METHOD\82X100819W.M
 Quant Title : SW846 8260
 QLast Update : Wed Oct 09 01:51:23 2019
 Response via : Initial Calibration

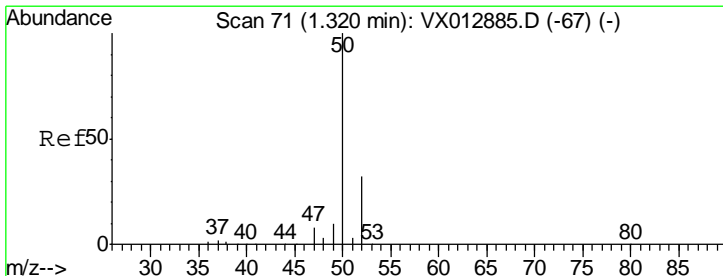
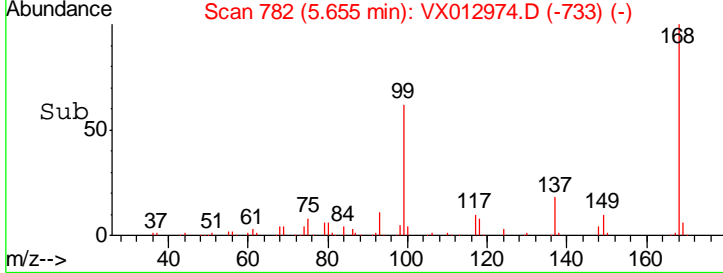
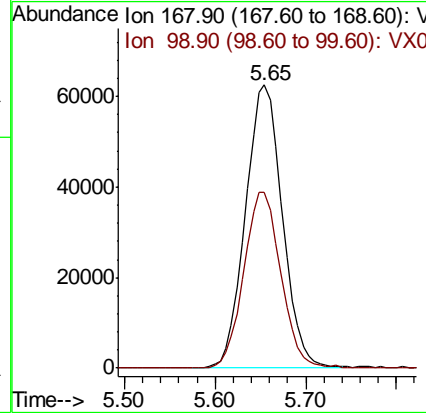
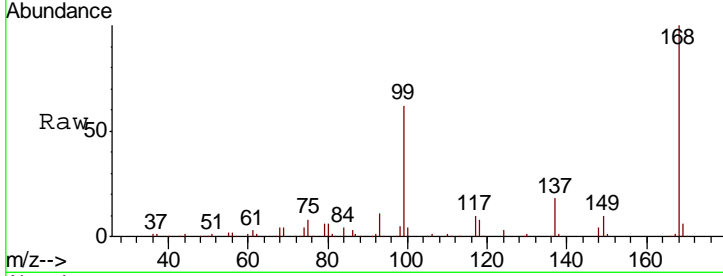




#1
 Pentafluorobenzene
 Concen: 50.000 ug/l
 RT: 5.65 min Scan# 782
 Delta R.T. 0.00 min
 Lab File: VX012974.D
 Acq: 10 Oct 2019 04:33

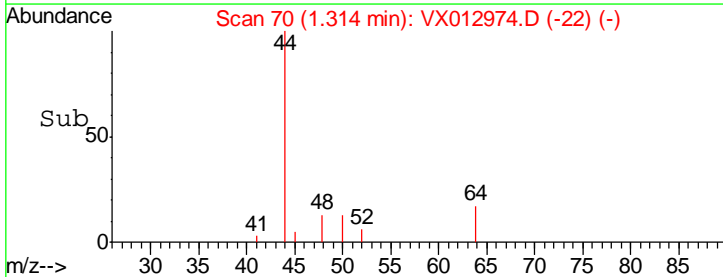
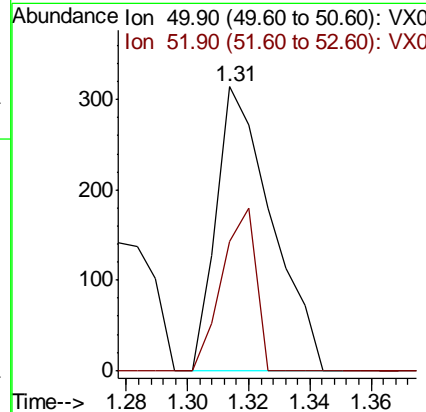
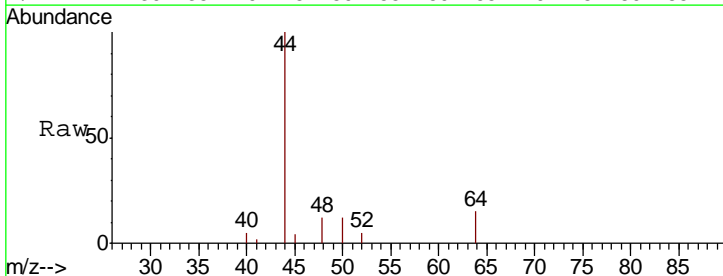
Instrument : MSVOA_X
 ClientSampled : FA19-JMW1982

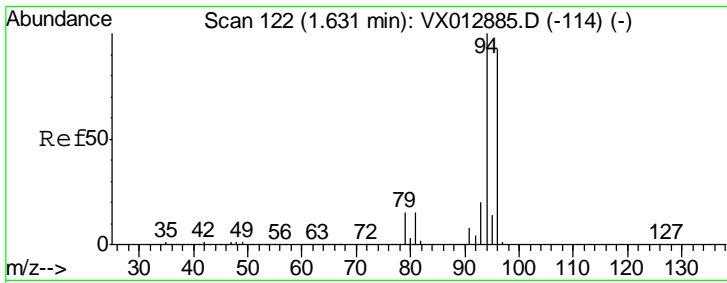
Tgt Ion: 168 Resp: 176454
 Ion Ratio Lower Upper
 168 100
 99 62.3 49.4 74.0



#3
 Chloromethane
 Concen: 0.201 ug/l
 RT: 1.31 min Scan# 70
 Delta R.T. -0.01 min
 Lab File: VX012974.D
 Acq: 10 Oct 2019 04:33

Tgt Ion: 50 Resp: 394
 Ion Ratio Lower Upper
 50 100
 52 45.5 25.2 37.8#

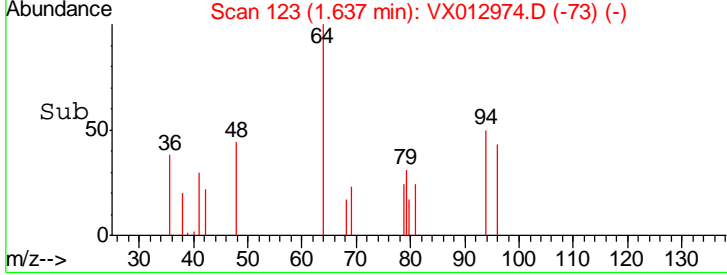
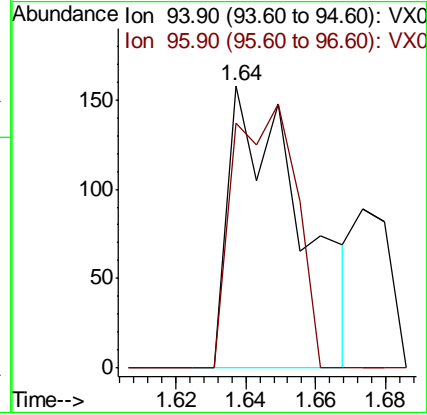
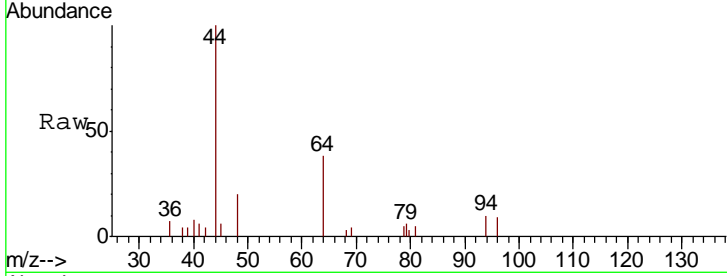




#5
 Bromomethane
 Concen: 0.269 ug/l
 RT: 1.64 min Scan# 123
 Delta R.T. 0.01 min
 Lab File: VX012974.D
 Acq: 10 Oct 2019 04:33

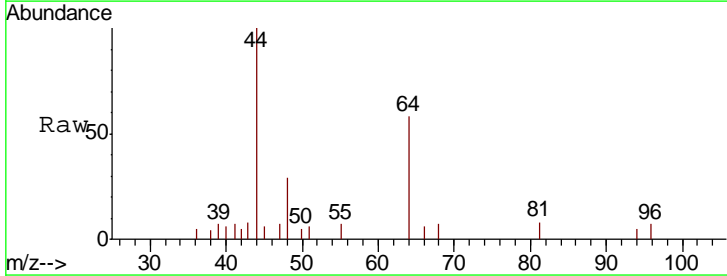
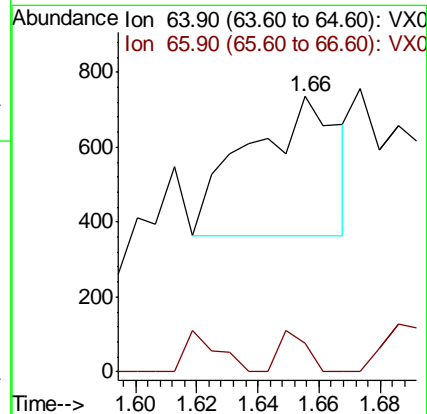
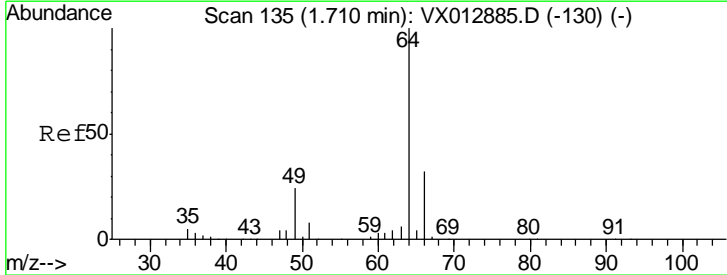
Instrument :
 MSVOA_X
ClientSampled :
 FA19-JMW1982

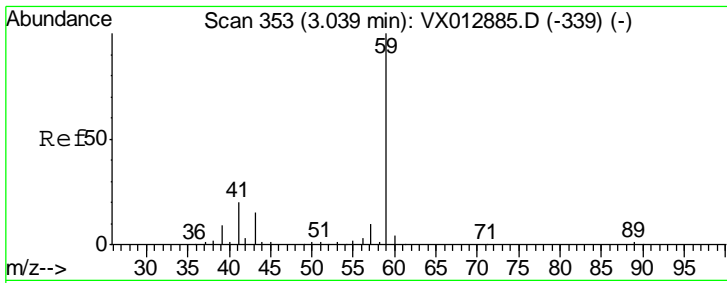
Tgt Ion: 94 Resp: 226
 Ion Ratio Lower Upper
 94 100
 96 86.7 74.7 112.1



#6
 Chloroethane
 Concen: 0.978 ug/l
 RT: 1.66 min Scan# 126
 Delta R.T. -0.05 min
 Lab File: VX012974.D
 Acq: 10 Oct 2019 04:33

Tgt Ion: 64 Resp: 759
 Ion Ratio Lower Upper
 64 100
 66 20.2 25.6 38.4#

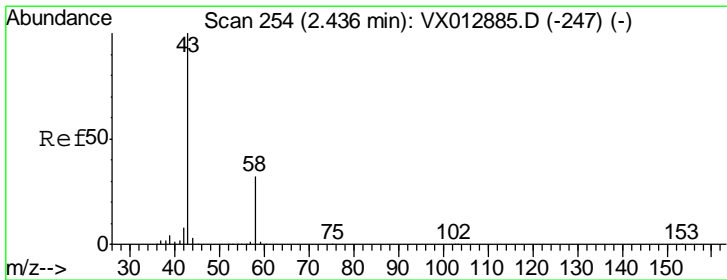
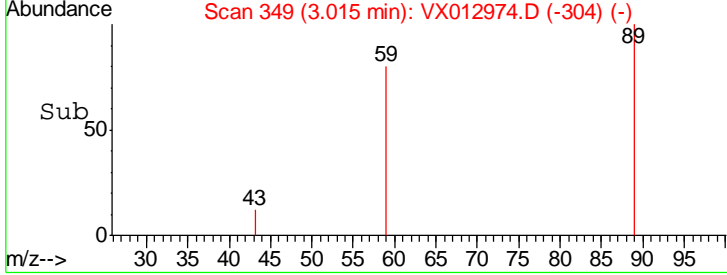
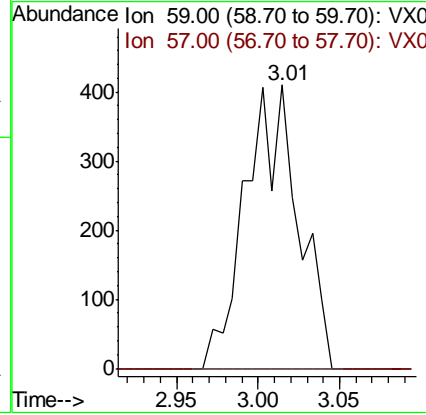
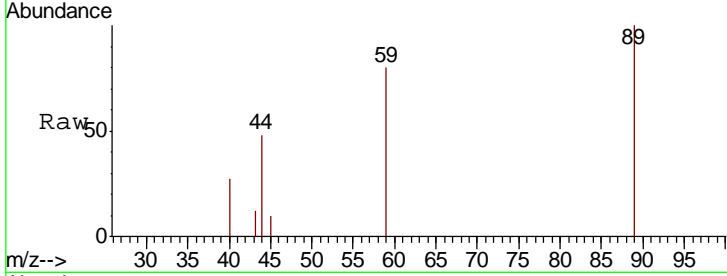




#11
 Tert butyl alcohol
 Concen: 1.579 ug/l
 RT: 3.01 min Scan# 349
 Delta R.T. -0.02 min
 Lab File: VX012974.D
 Acq: 10 Oct 2019 04:33

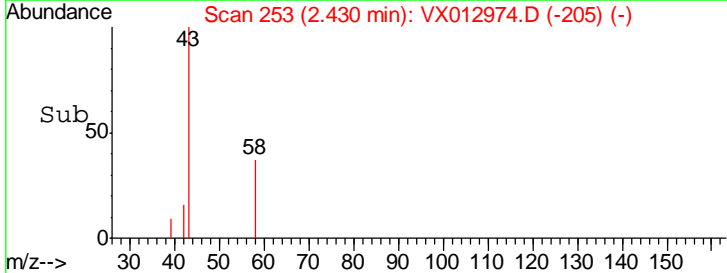
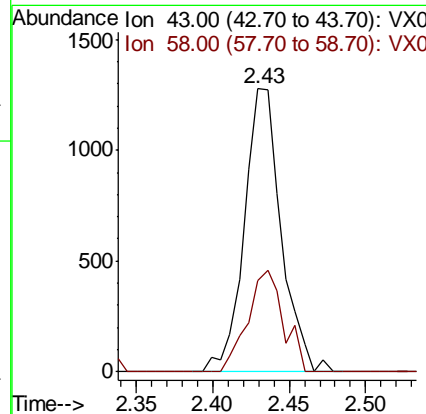
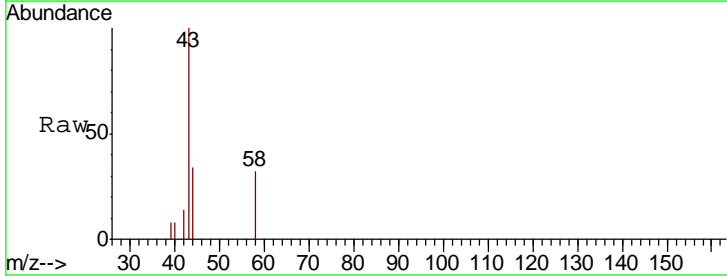
Instrument : MSVOA_X
 ClientSampled : FA19-JMW1982

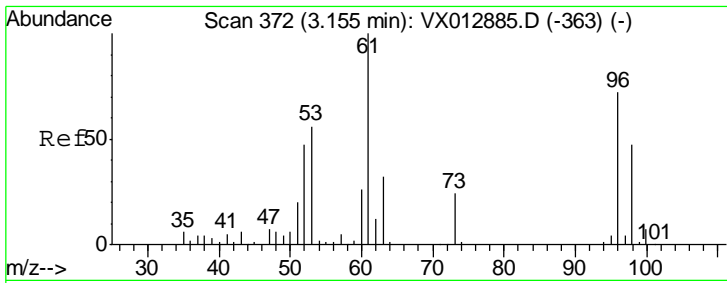
Tgt Ion	Resp	Lower	Upper
59	100		
57	0.0	8.3	12.5#



#16
 Acetone
 Concen: 1.837 ug/l
 RT: 2.43 min Scan# 253
 Delta R.T. -0.01 min
 Lab File: VX012974.D
 Acq: 10 Oct 2019 04:33

Tgt Ion	Resp	Lower	Upper
43	100		
58	32.1	25.4	38.2

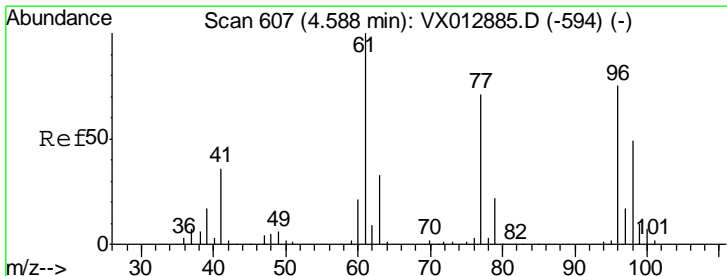
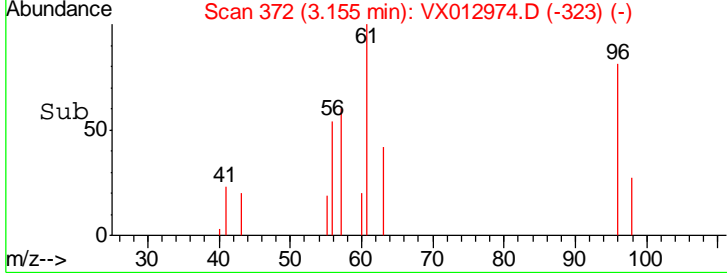
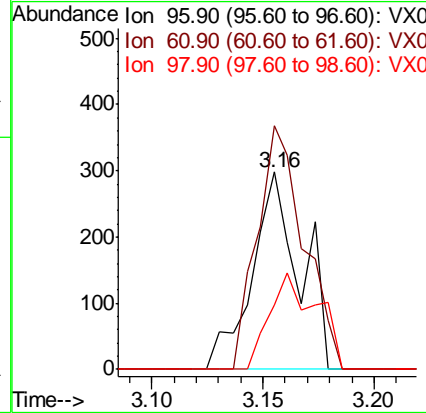
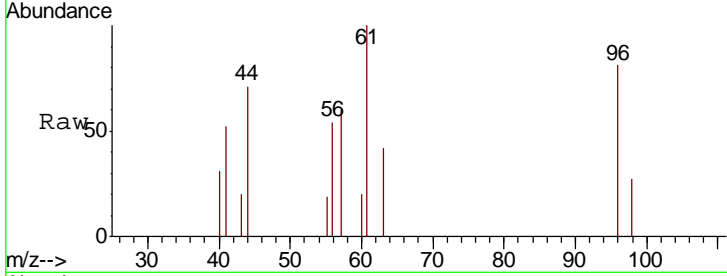




#21
 trans-1,2-Dichloroethene
 Concen: 0.235 ug/l
 RT: 3.16 min Scan# 372
 Delta R.T. 0.00 min
 Lab File: VX012974.D
 Acq: 10 Oct 2019 04:33

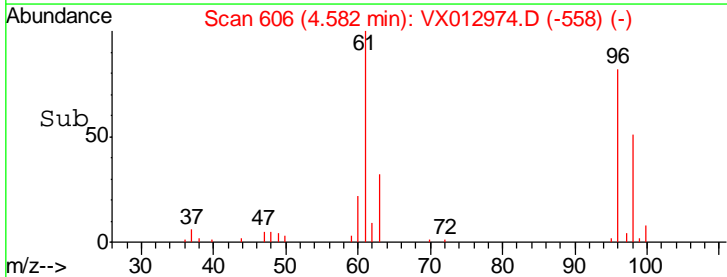
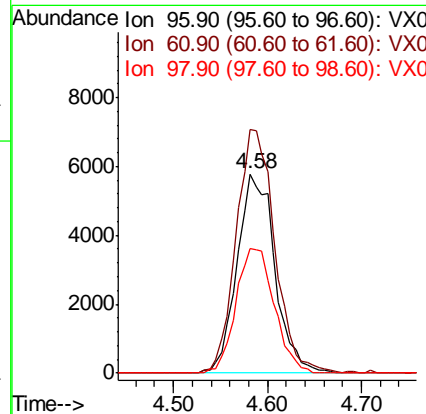
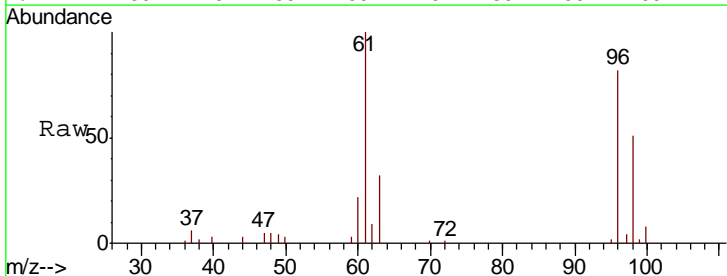
Instrument : MSVOA_X
 ClientSampled : FA19-JMW1982

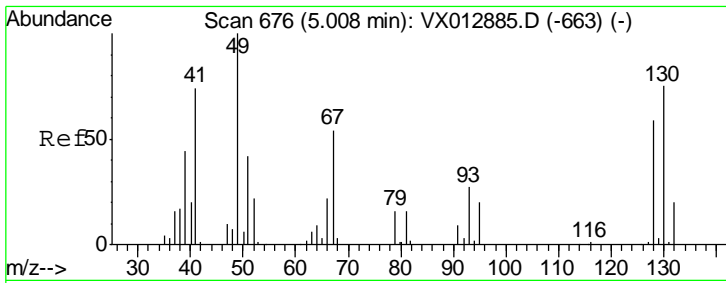
Tgt Ion	Resp	Lower	Upper
96	449		
61	123.5	110.4	165.6
98	32.9	51.5	77.3#



#27
 cis-1,2-Dichloroethene
 Concen: 7.336 ug/l
 RT: 4.58 min Scan# 606
 Delta R.T. -0.01 min
 Lab File: VX012974.D
 Acq: 10 Oct 2019 04:33

Tgt Ion	Resp	Lower	Upper
96	16161		
61	125.0	0.0	290.6
98	63.8	0.0	128.8

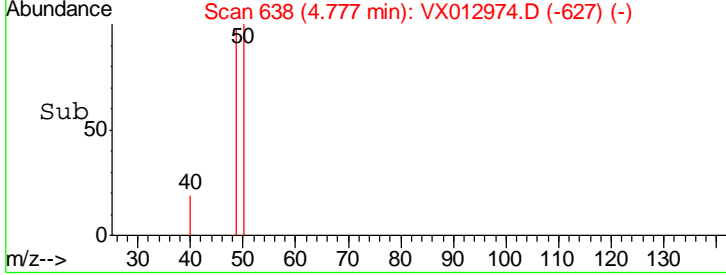
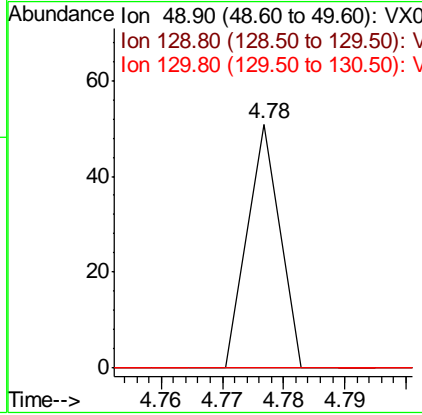
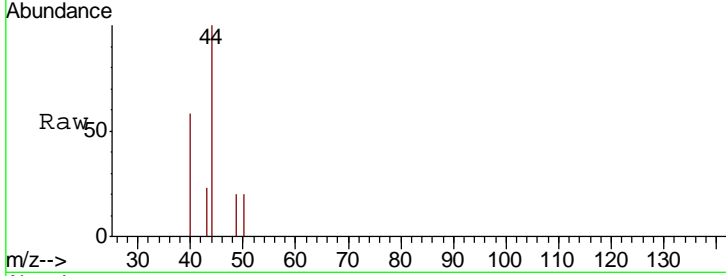




#28
 Bromochloromethane
 Concen: Below Cal
 RT: 4.78 min Scan# 638
 Delta R.T. -0.23 min
 Lab File: VX012974.D
 Acq: 10 Oct 2019 04:33

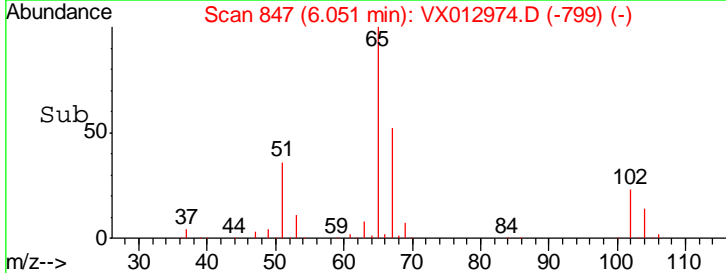
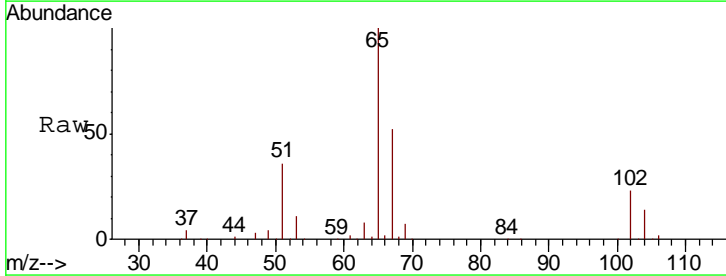
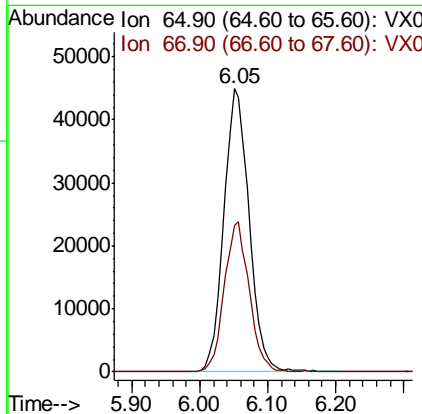
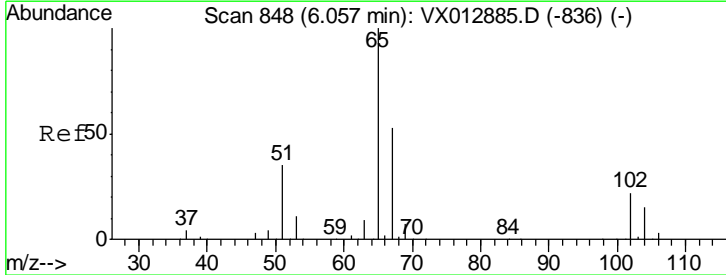
Instrument :
 MSVOA_X
ClientSampled :
 FA19-JMW1982

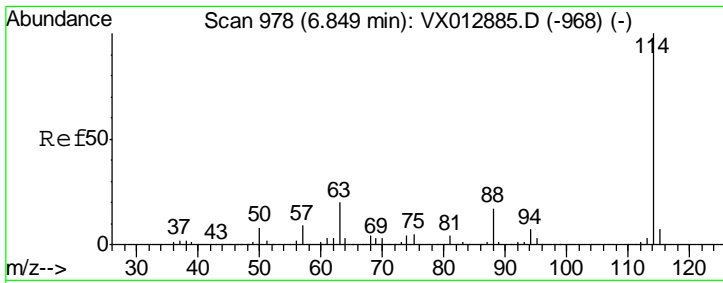
Tgt Ion	Resp	Lower	Upper
49	100		
129	0.0	0.0	4.2
130	0.0	62.1	93.1#



#33
 1,2-Dichloroethane-d4
 Concen: 52.507 ug/l
 RT: 6.05 min Scan# 847
 Delta R.T. -0.01 min
 Lab File: VX012974.D
 Acq: 10 Oct 2019 04:33

Tgt Ion	Resp	Lower	Upper
65	100		
67	52.2	0.0	104.4

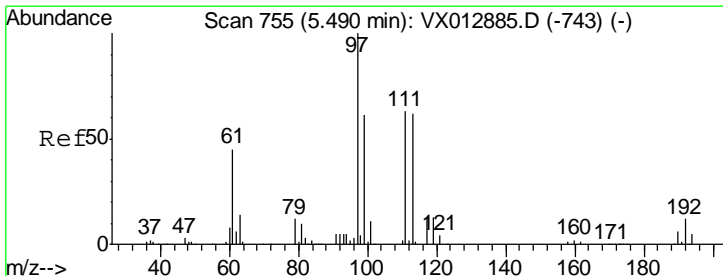
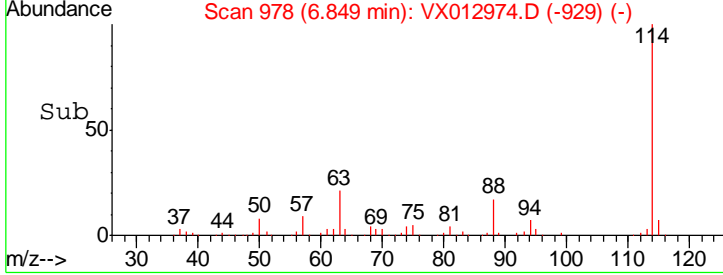
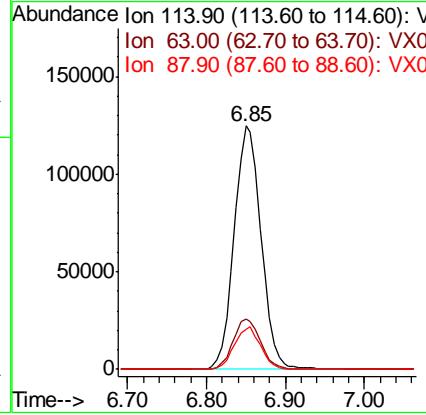
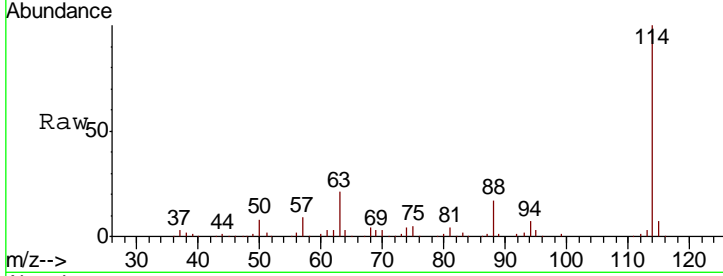




#34
 1,4-Difluorobenzene
 Concen: 50.000 ug/l
 RT: 6.85 min Scan# 978
 Delta R.T. 0.00 min
 Lab File: VX012974.D
 Acq: 10 Oct 2019 04:33

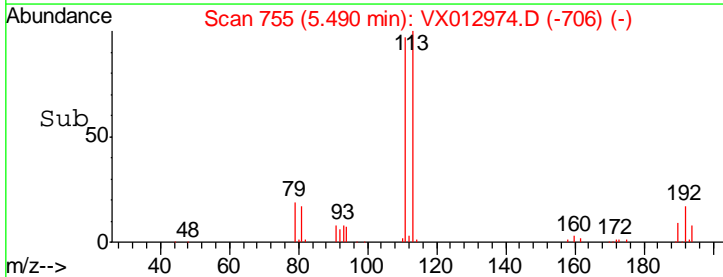
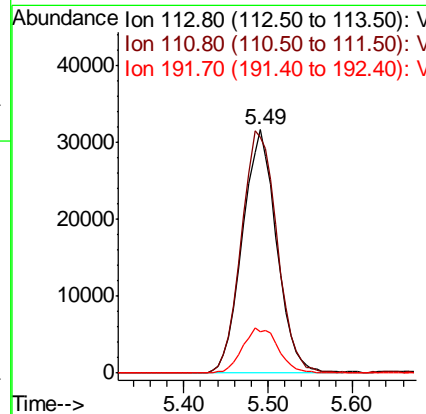
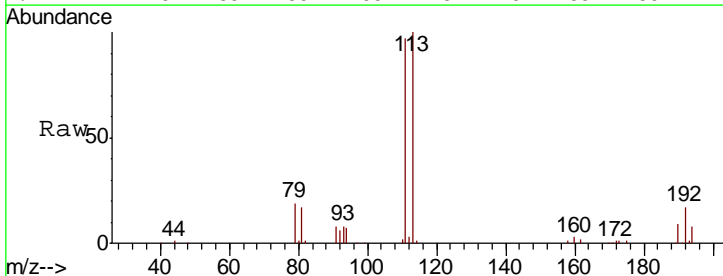
Instrument :
 MSVOA_X
 ClientSampled :
 FA19-JMW1982

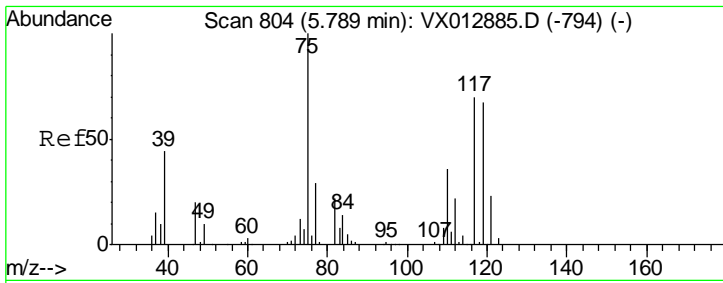
Tgt Ion	Resp	Lower	Upper
114	296367		
63	20.9	0.0	40.8
88	16.7	0.0	33.8



#35
 Dibromofluoromethane
 Concen: 51.258 ug/l
 RT: 5.49 min Scan# 755
 Delta R.T. 0.00 min
 Lab File: VX012974.D
 Acq: 10 Oct 2019 04:33

Tgt Ion	Resp	Lower	Upper
113	87189		
111	103.9	83.2	124.8
192	19.3	15.4	23.2

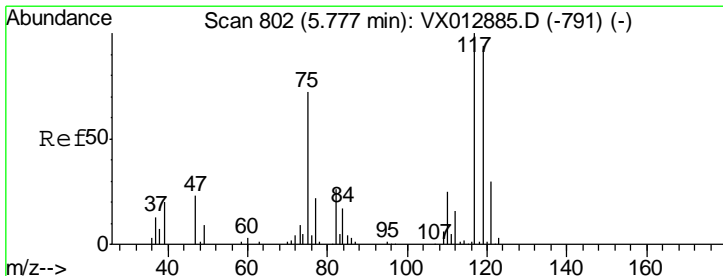
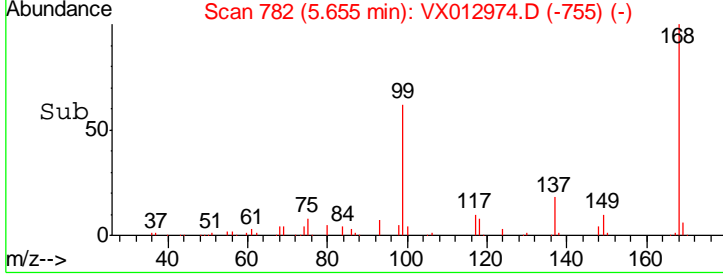
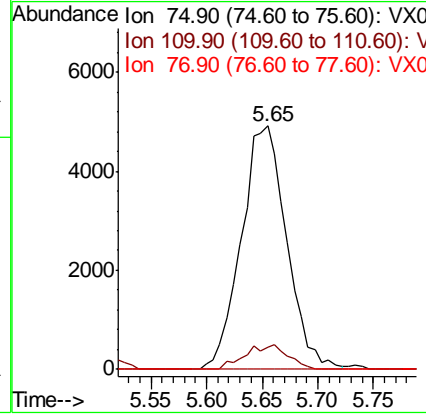
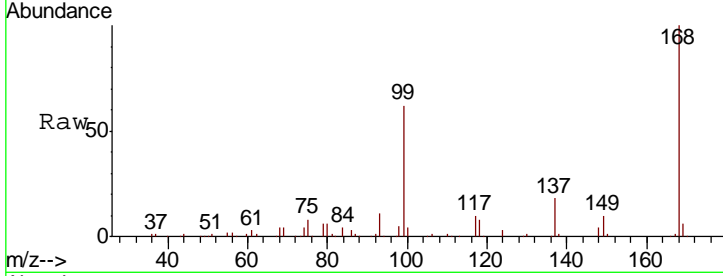




#36
 1,1-Dichloropropene
 Concen: 5.338 ug/l
 RT: 5.65 min Scan# 782
 Delta R.T. -0.13 min
 Lab File: VX012974.D
 Acq: 10 Oct 2019 04:33

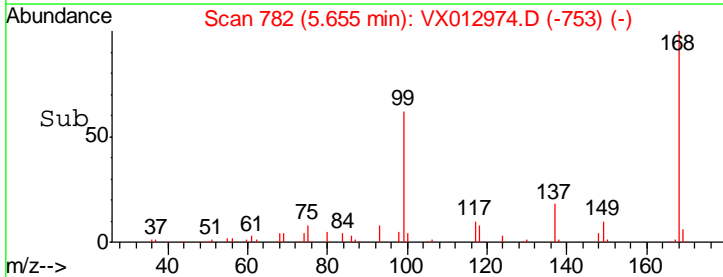
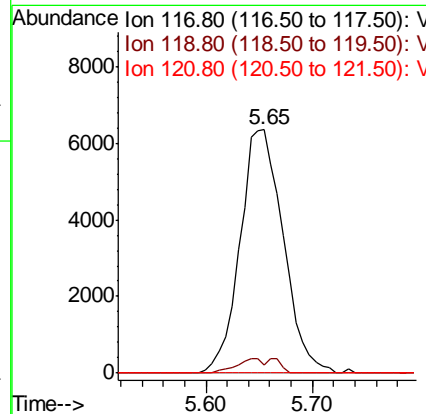
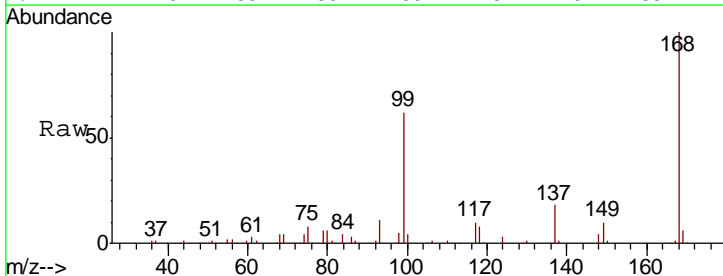
Instrument :
 MSVOA_X
ClientSampled :
 FA19-JMW1982

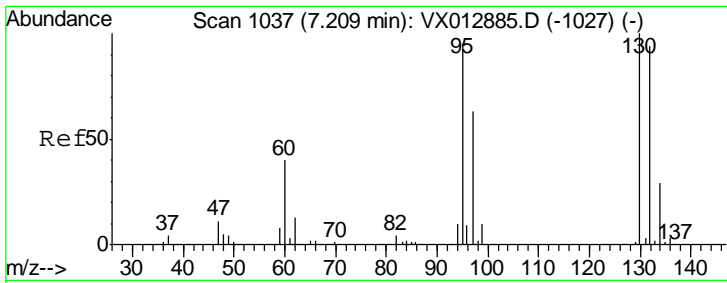
Tgt Ion	Resp	Lower	Upper
75	13909		
110	9.5	17.6	52.9#
77	0.0	24.4	36.6#



#38
 Carbon Tetrachloride
 Concen: 7.122 ug/l
 RT: 5.65 min Scan# 782
 Delta R.T. -0.12 min
 Lab File: VX012974.D
 Acq: 10 Oct 2019 04:33

Tgt Ion	Resp	Lower	Upper
117	18064		
119	3.2	74.5	111.7#
121	0.0	24.2	36.4#



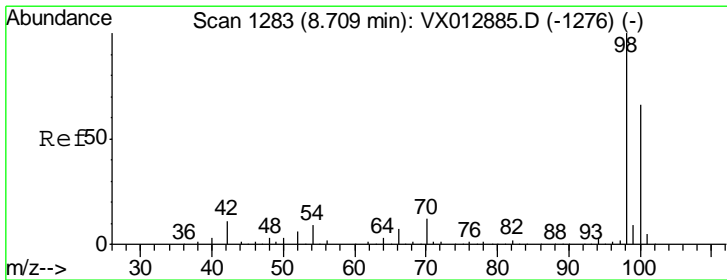
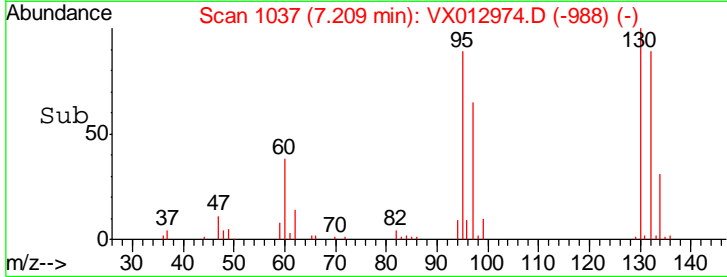
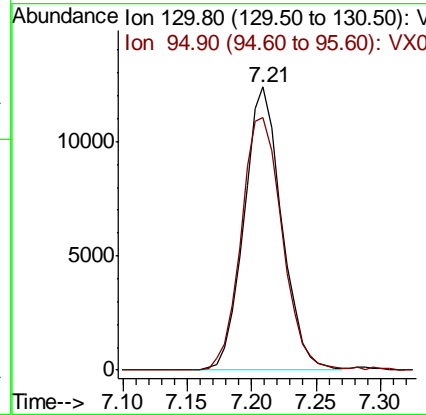
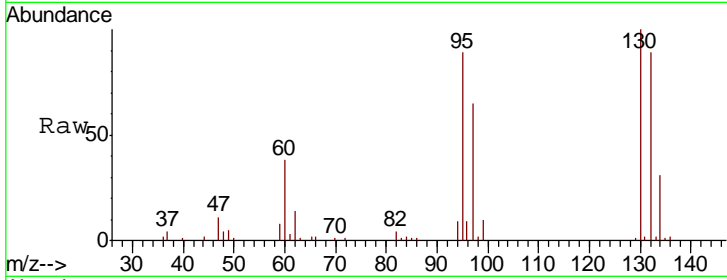


#44
 Trichloroethene
 Concen: 11.717 ug/l
 RT: 7.21 min Scan# 1037
 Delta R.T. 0.00 min
 Lab File: VX012974.D
 Acq: 10 Oct 2019 04:33

Instrument : MSVOA_X
 ClientSampled : FA19-JMW1982

Tgt Ion: 130 Resp: 25006

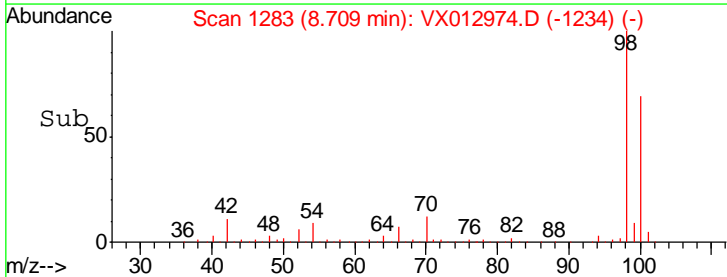
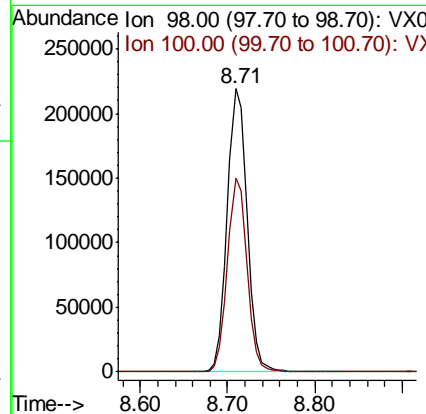
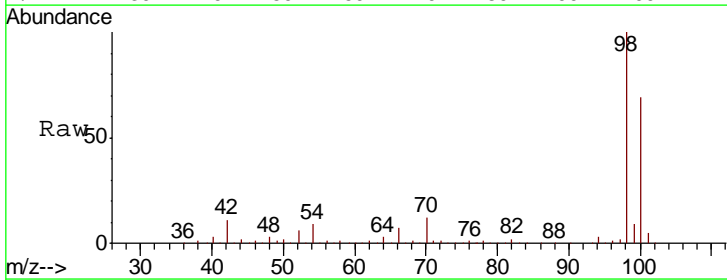
Ion	Ratio	Lower	Upper
130	100		
95	89.2	0.0	189.2

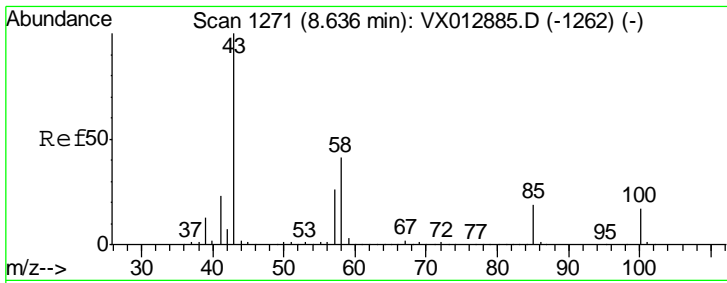


#50
 Toluene-d8
 Concen: 52.240 ug/l
 RT: 8.71 min Scan# 1283
 Delta R.T. 0.00 min
 Lab File: VX012974.D
 Acq: 10 Oct 2019 04:33

Tgt Ion: 98 Resp: 346574

Ion	Ratio	Lower	Upper
98	100		
100	67.5	53.4	80.2

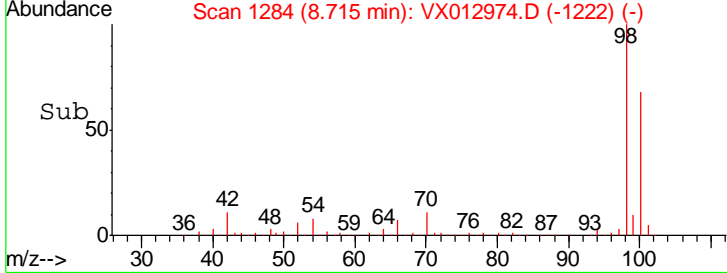
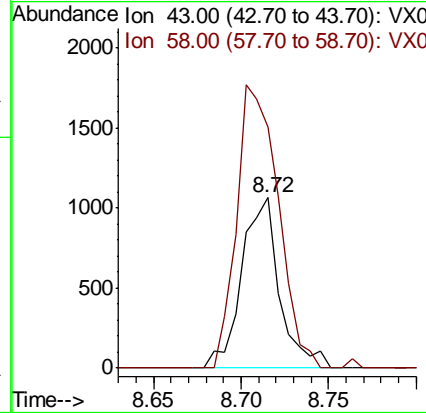
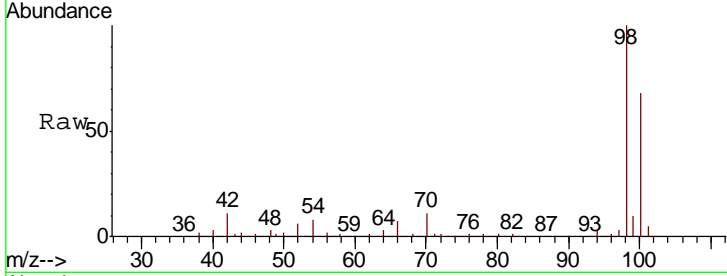




#51
 4-Methyl-2-Pentanone
 Concen: 0.552 ug/l
 RT: 8.72 min Scan# 1284
 Delta R.T. 0.08 min
 Lab File: VX012974.D
 Acq: 10 Oct 2019 04:33

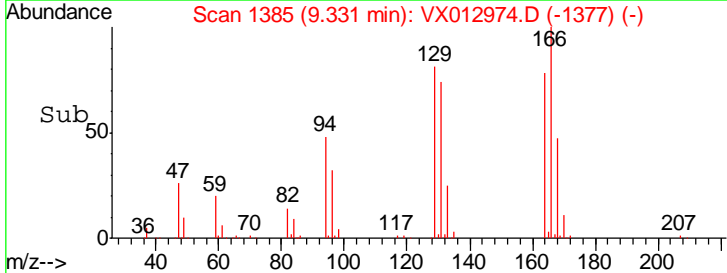
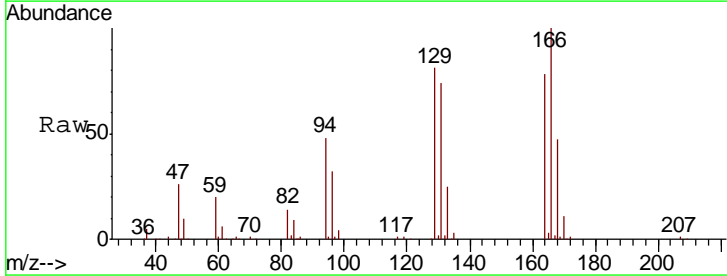
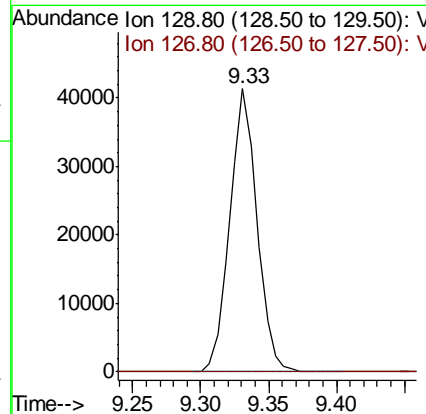
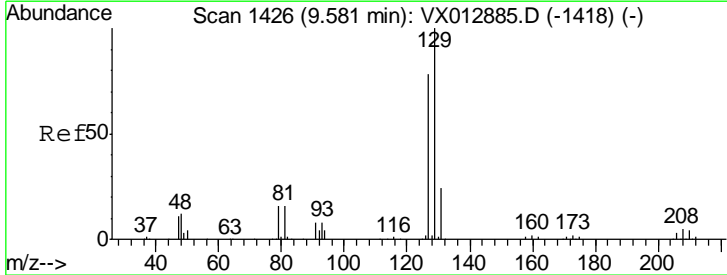
Instrument :
 MSVOA_X
 ClientSampled :
 FA19-JMW1982

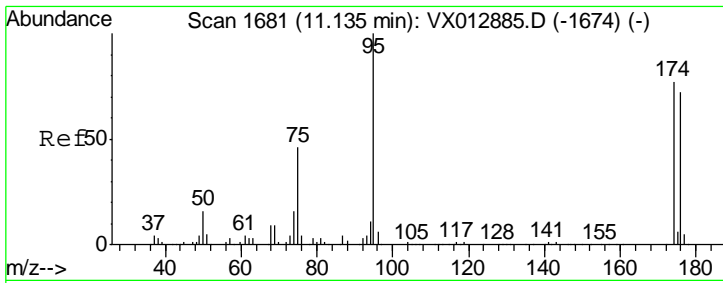
Tot Ion: 43 Resp: 1609
 Ion Ratio Lower Upper
 43 100
 58 181.4 32.4 48.6#



#60
 Dibromochloromethane
 Concen: 27.406 ug/l
 RT: 9.33 min Scan# 1385
 Delta R.T. -0.25 min
 Lab File: VX012974.D
 Acq: 10 Oct 2019 04:33

Tgt Ion: 129 Resp: 57535
 Ion Ratio Lower Upper
 129 100
 127 0.0 38.9 116.7#

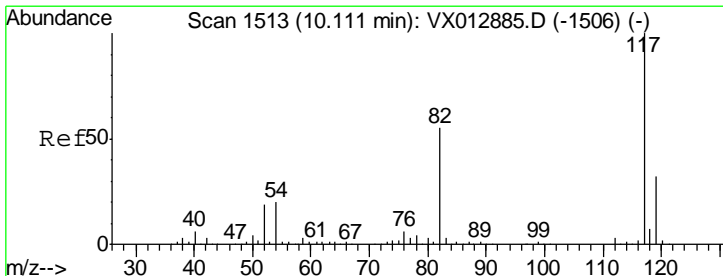
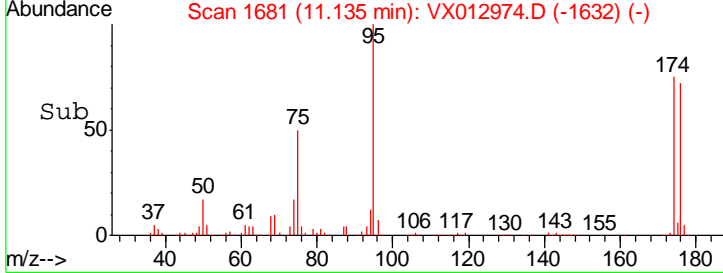
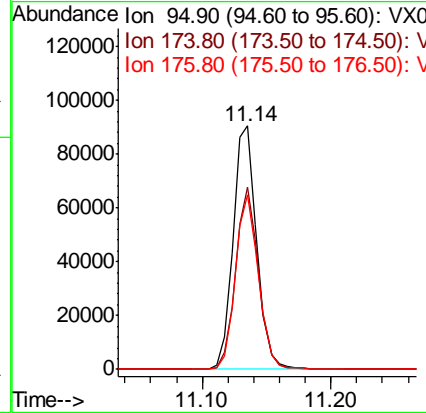
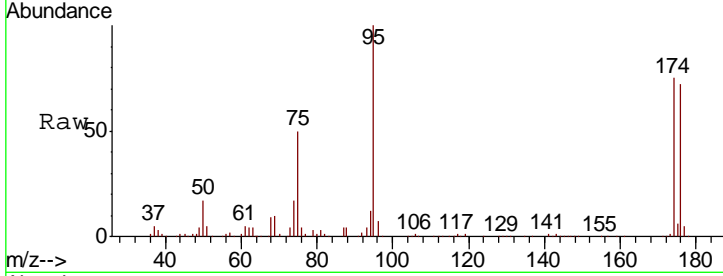




#62
 4-Bromofluorobenzene
 Concen: 45.198 ug/l
 RT: 11.14 min Scan# 1681
 Delta R.T. 0.00 min
 Lab File: VX012974.D
 Acq: 10 Oct 2019 04:33

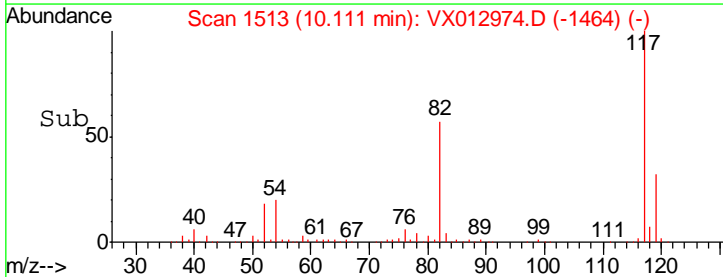
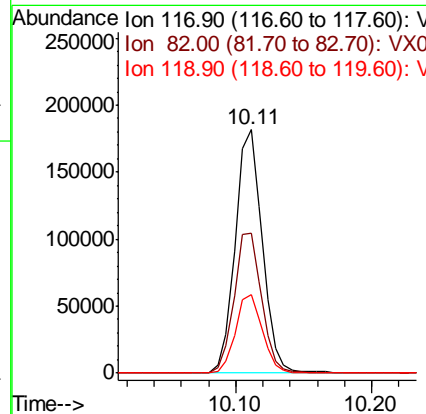
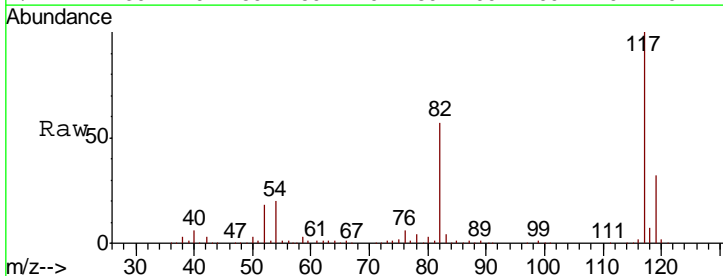
Instrument : MSVOA_X
 ClientSampleId : FA19-JMW1982

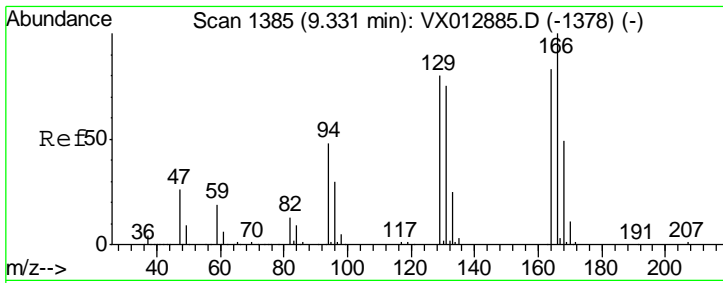
Tgt Ion	Resp	Lower	Upper
95	116511		
174	72.1	0.0	143.4
176	69.8	0.0	136.0



#63
 Chlorobenzene-d5
 Concen: 50.000 ug/l
 RT: 10.11 min Scan# 1513
 Delta R.T. 0.00 min
 Lab File: VX012974.D
 Acq: 10 Oct 2019 04:33

Tgt Ion	Resp	Lower	Upper
117	251236		
82	57.5	44.1	66.1
119	32.4	25.8	38.8

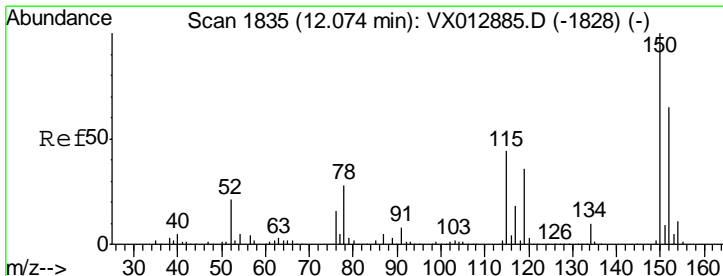
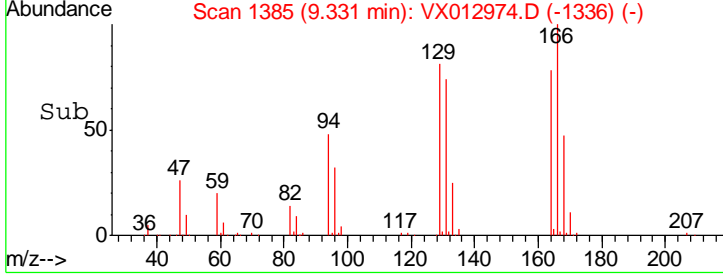
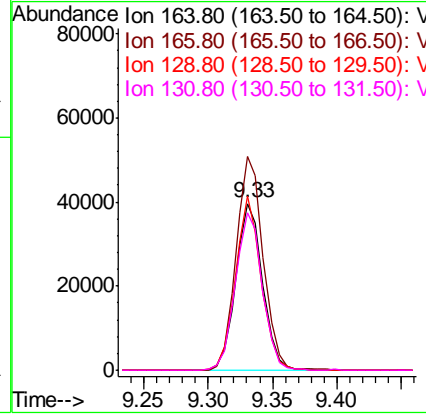
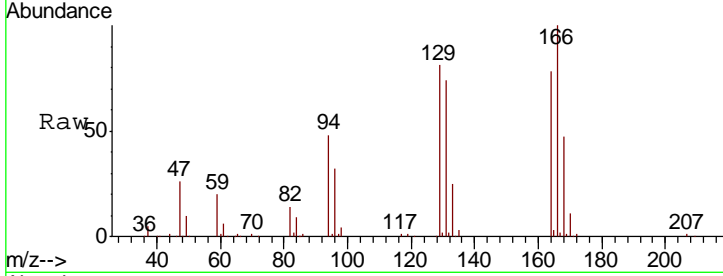




#64
 Tetrachloroethene
 Concen: 33.056 ug/l
 RT: 9.33 min Scan# 1385
 Delta R.T. 0.00 min
 Lab File: VX012974.D
 Acq: 10 Oct 2019 04:33

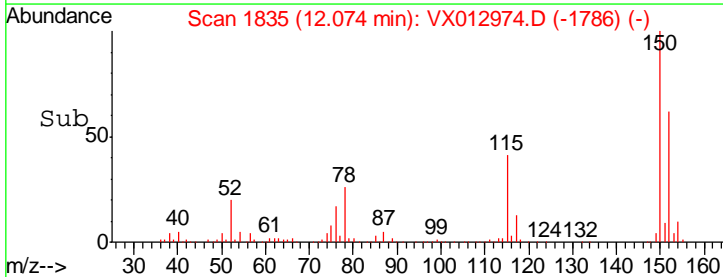
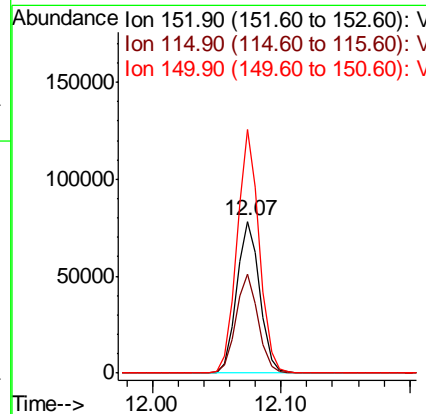
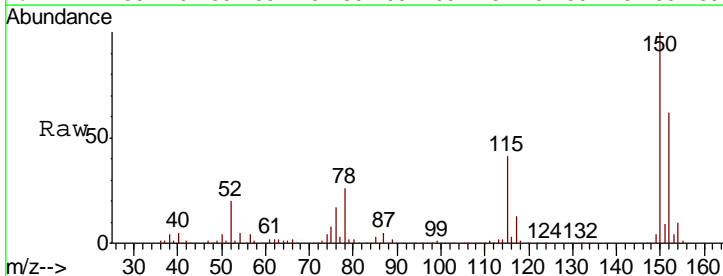
Instrument :
 MSVOA_X
 ClientSampled :
 FA19-JMW1982

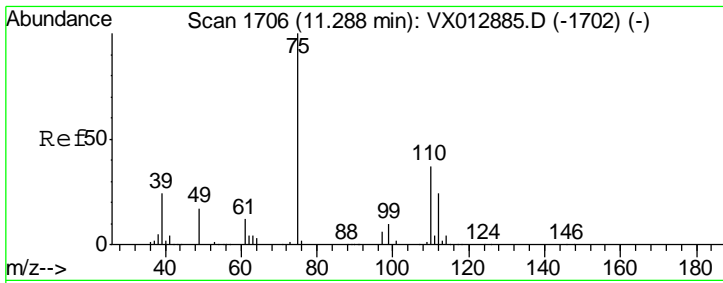
Tgt Ion	Resp	Lower	Upper
164	100		
166	128.0	96.9	145.3
129	104.2	77.9	116.9
131	94.4	72.7	109.1



#72
 1,4-Dichlorobenzene-d4
 Concen: 50.000 ug/l
 RT: 12.07 min Scan# 1835
 Delta R.T. 0.00 min
 Lab File: VX012974.D
 Acq: 10 Oct 2019 04:33

Tgt Ion	Resp	Lower	Upper
152	100		
115	63.4	44.5	133.5
150	155.6	0.0	353.4

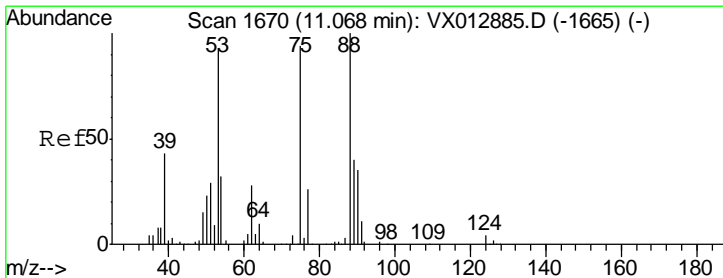
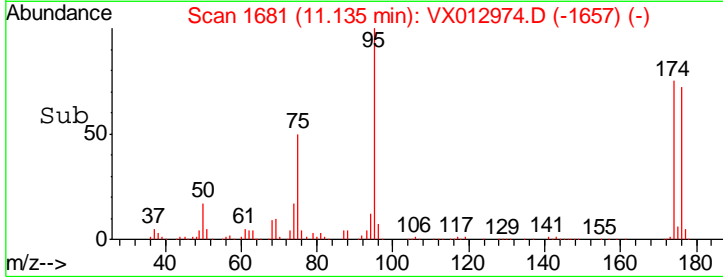
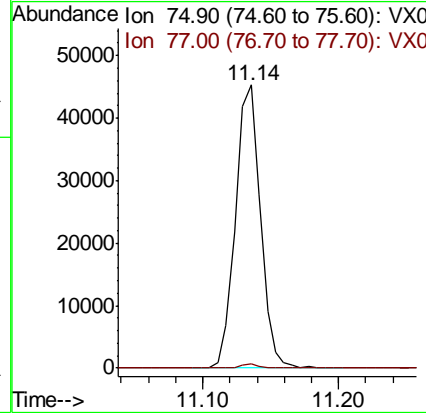
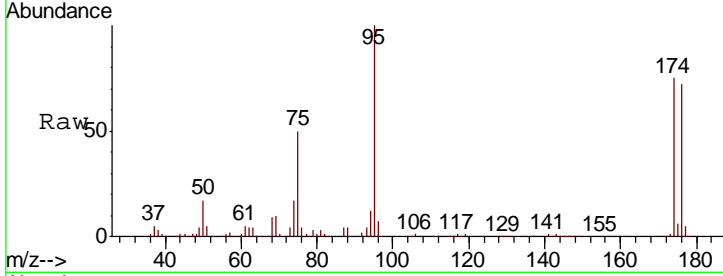




#76
 1,2,3-Trichloropropane
 Concen: 26.797 ug/l
 RT: 11.14 min Scan# 1681
 Delta R.T. -0.15 min
 Lab File: VX012974.D
 Acq: 10 Oct 2019 04:33

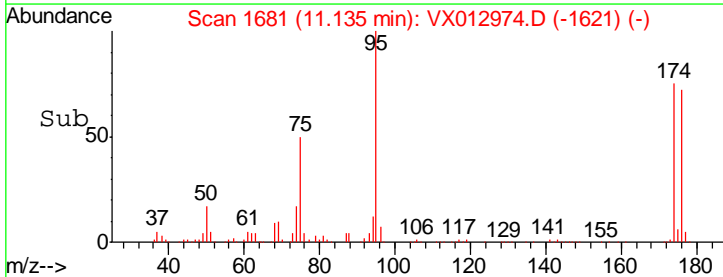
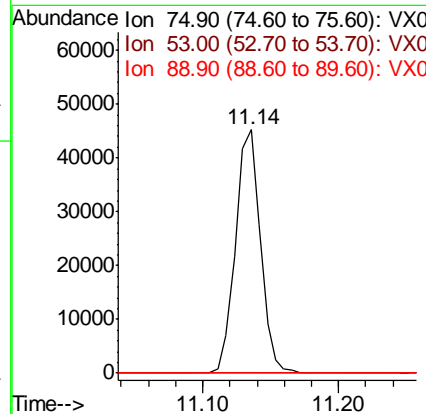
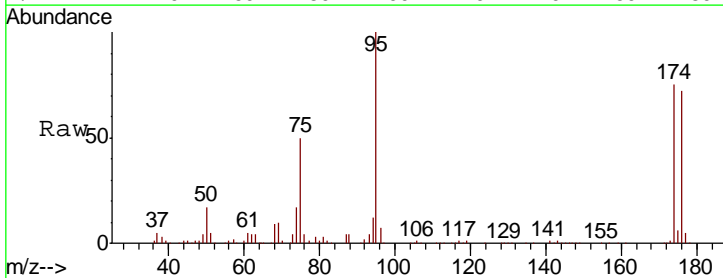
Instrument :
 MSVOA_X
 ClientSampled :
 FA19-JMW1982

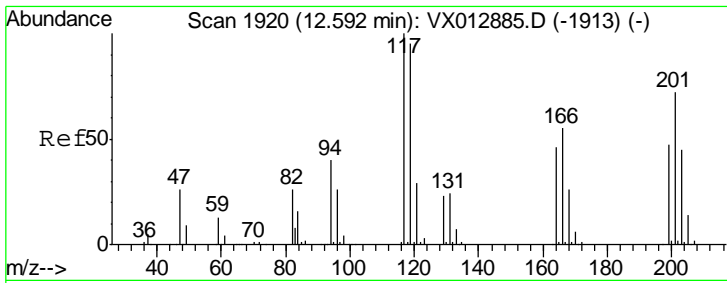
Tgt Ion: 75 Resp: 57785
 Ion Ratio Lower Upper
 75 100
 77 1.2 22.9 68.8#



#81
 trans-1,4-Dichloro-2-butene
 Concen: 67.364 ug/l
 RT: 11.14 min Scan# 1681
 Delta R.T. 0.07 min
 Lab File: VX012974.D
 Acq: 10 Oct 2019 04:33

Tgt Ion: 75 Resp: 57785
 Ion Ratio Lower Upper
 75 100
 53 0.0 78.5 117.7#
 89 0.0 37.4 56.2#





#90
 Hexachloroethane
 Concen: 2.164 ug/l
 RT: 12.59 min Scan# 1920
 Delta R.T. 0.00 min
 Lab File: VX012974.D
 Acq: 10 Oct 2019 04:33

Instrument : MSVOA_X
 ClientSampled : FA19-JMW1982

Tot Ion	Ion	Ratio	Lower	Upper	Resp
117	100				55
201	0.0	36.9	110.7#		

