

Data Path : Z:\VOASRV\HPCHEM1\MSVOA X\DATA\VX100920\
 Data File : VX018893.D
 Acq On : 10 Oct 2020 07:00
 Operator : JC/SP
 Sample : L4303-10
 Misc : 5.0mL/MSVOA X/WATER
 ALS Vial : 50 Sample Multiplier: 1

Instrument :
 MSVOA_X
 ClientSampleId :
 FC-MW05S-20201003

Integration Parameters: RTEINT.P
 Integrator: RTE
 Smoothing : ON Filtering: 5
 Sampling : 1 Min Area: 3 % of largest Peak
 Start Thrs: 0.2 Max Peaks: 100
 Stop Thrs : 0 Peak Location: TOP

If leading or trailing edge < 100 prefer < Baseline drop else tangent >
 Peak separation: 5

Method : Z:\VOASRV\HPCHEM1\MSVOA_X\METHOD\82X100920W.M
 Title : SW846 8260

Signal : TIC

peak #	R.T. min	first scan	max scan	last scan	PK TY	peak height	corr. area	corr. % max.	% of total
1	5.464	707	718	732	rBV2	135886	387958	37.04%	6.695%
2	5.629	735	745	759	rVV	218525	607379	57.99%	10.481%
3	6.031	801	811	824	rBV	146156	386726	36.92%	6.674%
4	6.830	931	942	957	rBV	326871	783533	74.81%	13.521%
5	8.537	1215	1222	1230	rVB3	12036	23033	2.20%	0.397%
6	8.695	1236	1248	1259	rBV	680726	1047331	100.00%	18.074%
7	10.098	1470	1478	1485	rBV	675213	904089	86.32%	15.602%
8	11.122	1640	1646	1656	rBV	582413	723265	69.06%	12.481%
9	12.061	1791	1800	1808	rBV	739170	918179	87.67%	15.845%
10	13.884	2097	2099	2108	rBV5	7687	13285	1.27%	0.229%

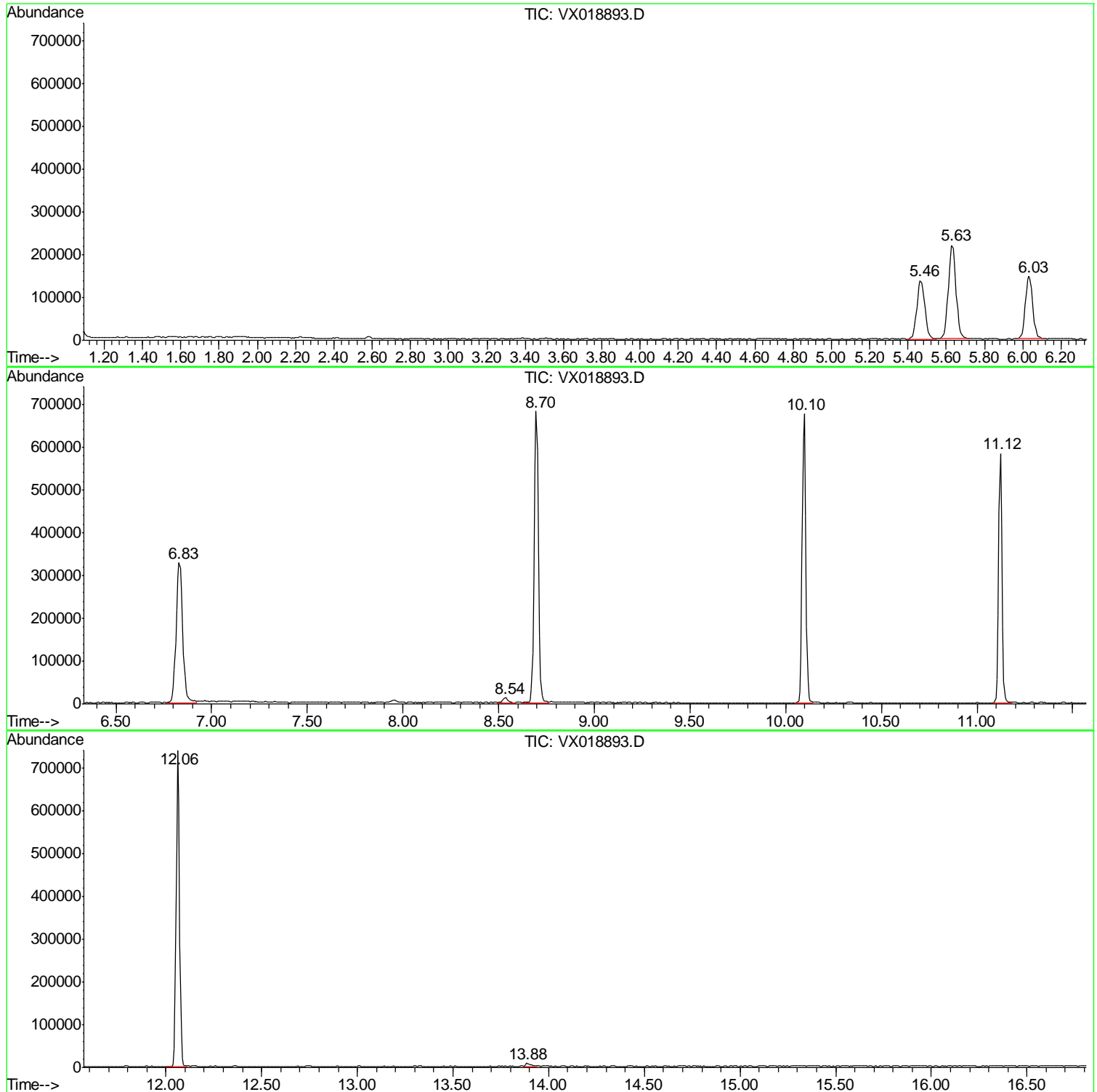
Sum of corrected areas: 5794778

Data Path : Z:\VOASRV\HPCHEM1\MSVOA X\DATA\VX100920\
Data File : VX018893.D
Acq On : 10 Oct 2020 07:00
Operator : JC/SP
Sample : L4303-10
Misc : 5.0mL/MSVOA X/WATER
ALS Vial : 50 Sample Multiplier: 1

Instrument :
MSVOA_X
ClientSampled :
FC-MW05S-20201003

Quant Method : Z:\VOASRV\HPCHEM1\MSVOA_X\METHOD\82X100920W.M
Quant Title : SW846 8260

TIC Library : C:\DATABASE\NIST11.L
TIC Integration Parameters: LSCINT.P



Data Path : Z:\VOASRV\HPCHEM1\MSVOA_X\DATA\VX100920\
Data File : VX018893.D
Acq On : 10 Oct 2020 07:00
Operator : JC/SP
Sample : L4303-10
Misc : 5.0mL/MSVOA_X/WATER
ALS Vial : 50 Sample Multiplier: 1

Instrument :
MSVOA_X
ClientSampleId :
FC-MW05S-20201003

Quant Method : Z:\VOASRV\HPCHEM1\MSVOA_X\METHOD\82X100920W.M
Quant Title : SW846 8260

TIC Library : C:\DATABASE\NIST11.L
TIC Integration Parameters: LSCINT.P

No Library Search Compounds Detected

Data Path : Z:\VOASRV\HPCHEM1\MSVOA_X\DATA\VX100920\
Data File : VX018893.D
Acq On : 10 Oct 2020 07:00
Operator : JC/SP
Sample : L4303-10
Misc : 5.0mL/MSVOA_X/WATER
ALS Vial : 50 Sample Multiplier: 1

Instrument :
MSVOA_X
ClientSampleId :
FC-MW05S-20201003

Quant Method : Z:\VOASRV\HPCHEM1\MSVOA_X\METHOD\82X100920W.M
Quant Title : SW846 8260

TIC Library : C:\DATABASE\NIST11.L
TIC Integration Parameters: LSCINT.P

TIC Top Hit name	RT	EstConc	Units	Response	--Internal Standard--			
					#	RT	Resp	Conc
