

Data Path : Z:\voasrv\HPCHEM1\MSVOA_X\Data\VX100924\
 Data File : VX043335.D
 Acq On : 09 Oct 2024 13:36
 Operator : JC/MD
 Sample : PB163972ZHE#04
 Misc : 5.0mL/MSVOA_X/WATER
 ALS Vial : 11 Sample Multiplier: 1

Instrument :
 MSVOA_X
 ClientSampleId :

Quant Time: Oct 10 01:30:51 2024
 Quant Method : Z:\voasrv\HPCHEM1\MSVOA_X\Method\82X100124W.M
 Quant Title : SW846 8260
 QLast Update : Wed Oct 02 16:50:57 2024
 Response via : Initial Calibration

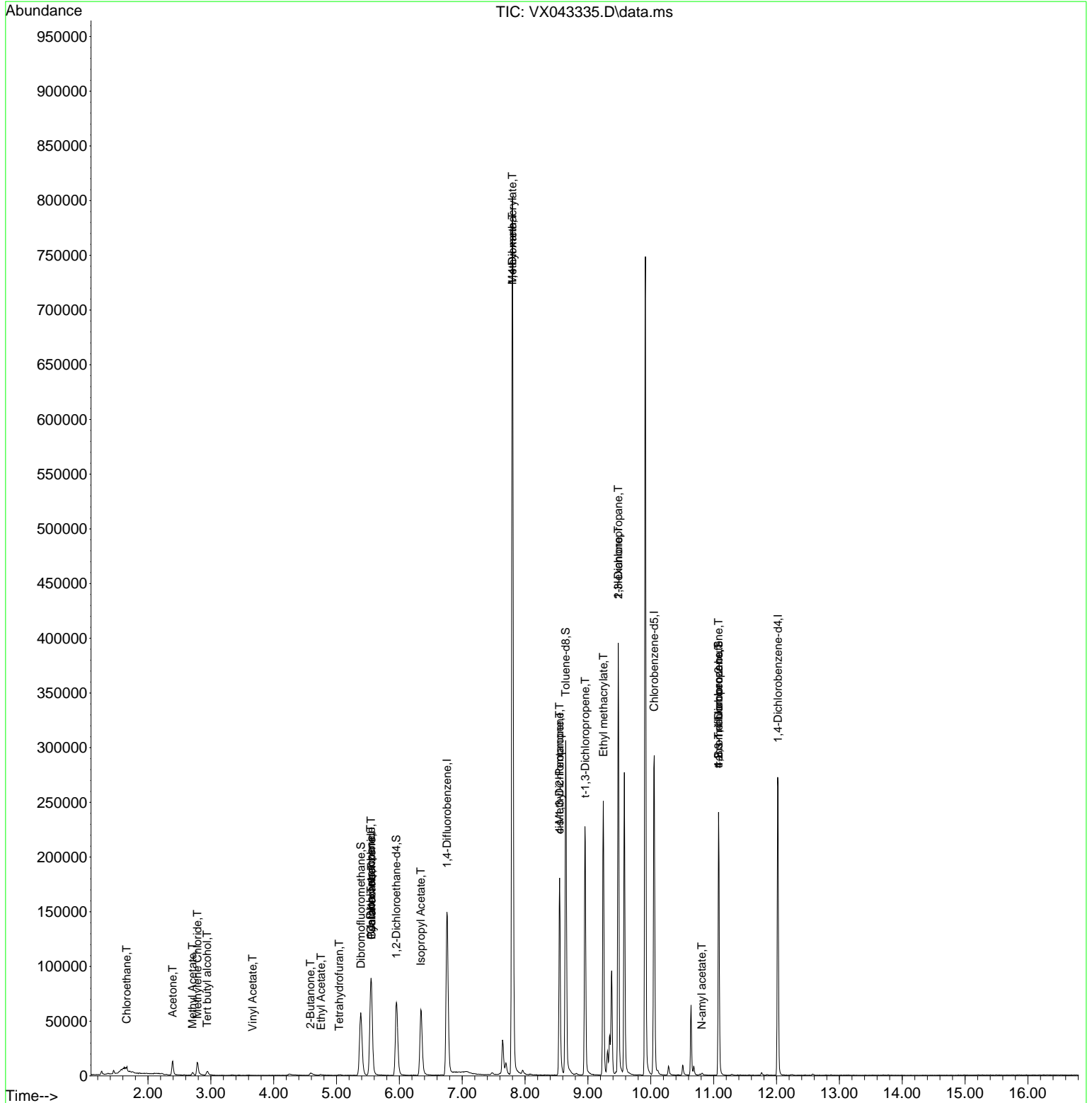
Compound	R.T.	QIon	Response	Conc	Units	Dev(Min)
Internal Standards						
1) Pentafluorobenzene	5.556	168	79857	50.000	ug/l	0.00
34) 1,4-Difluorobenzene	6.757	114	152726	50.000	ug/l	0.00
63) Chlorobenzene-d5	10.055	117	129225	50.000	ug/l	0.00
72) 1,4-Dichlorobenzene-d4	12.024	152	55471	50.000	ug/l	0.00
System Monitoring Compounds						
33) 1,2-Dichloroethane-d4	5.952	65	69659	53.412	ug/l	0.00
Spiked Amount	50.000	Range	74 - 125	Recovery	=	106.820%
35) Dibromofluoromethane	5.385	113	49548	47.043	ug/l	0.00
Spiked Amount	50.000	Range	75 - 124	Recovery	=	94.080%
50) Toluene-d8	8.647	98	178970	49.033	ug/l	0.00
Spiked Amount	50.000	Range	86 - 113	Recovery	=	98.060%
62) 4-Bromofluorobenzene	11.079	95	62230	46.930	ug/l	0.00
Spiked Amount	50.000	Range	77 - 121	Recovery	=	93.860%
Target Compounds						
						Qvalue
6) Chloroethane	1.660	64	98	0.275	ug/l #	42
11) Tert butyl alcohol	2.941	59	2325	9.368	ug/l #	71
16) Acetone	2.392	43	15484	28.430	ug/l	93
18) Methyl Acetate	2.709	43	3413	2.498	ug/l	96
20) Methylene Chloride	2.788	84	6374	6.347	ug/l	97
23) Vinyl Acetate	3.666	43	20	6.345	ug/l #	71
25) 2-Butanone	4.587	43	4477	5.995	ug/l	95
29) Tetrahydrofuran	5.044	42	422	0.887	ug/l #	49
31) Cyclohexane	5.556	56	2027	1.440	ug/l #	38
36) 1,1-Dichloropropene	5.544	75	7396	5.558	ug/l #	50
37) Ethyl Acetate	4.751	43	1615	1.011	ug/l #	80
38) Carbon Tetrachloride	5.550	117	9113	5.785	ug/l #	14
43) Isopropyl Acetate	6.342	43	86228	32.671	ug/l	99
48) Methyl methacrylate	7.799	41	73855	57.031	ug/l #	45
49) 1,4-Dioxane	7.799	88	93	3.694	ug/l #	1
51) 4-Methyl-2-Pentanone	8.549	43	65271	40.719	ug/l #	50
53) t-1,3-Dichloropropene	8.958	75	484	0.312	ug/l #	43
54) cis-1,3-Dichloropropene	8.549	75	28038	16.867	ug/l #	60
56) Ethyl methacrylate	9.244	69	484	0.295	ug/l #	1
57) 1,3-Dichloropropane	9.482	76	3436	2.008	ug/l #	43
59) 2-Hexanone	9.482	43	51361	42.371	ug/l #	53
74) N-amyl acetate	10.811	43	534	0.261	ug/l #	44
76) 1,2,3-Trichloropropane	11.079	75	35540	28.885	ug/l #	33
81) trans-1,4-Dichloro-2-b...	11.079	75	35540	74.859	ug/l #	8

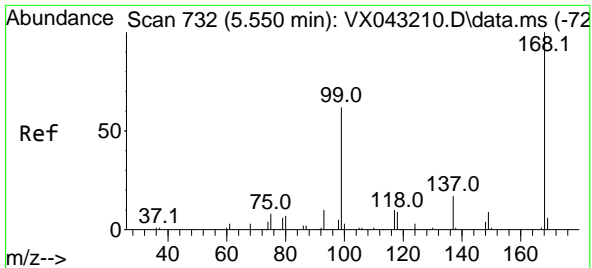
(#) = qualifier out of range (m) = manual integration (+) = signals summed

Data Path : Z:\voasrv\HPCHEM1\MSVOA_X\Data\VX100924\
 Data File : VX043335.D
 Acq On : 09 Oct 2024 13:36
 Operator : JC/MD
 Sample : PB163972ZHE#04
 Misc : 5.0mL/MSVOA_X/WATER
 ALS Vial : 11 Sample Multiplier: 1

Instrument :
 MSVOA_X
 ClientSampleId :

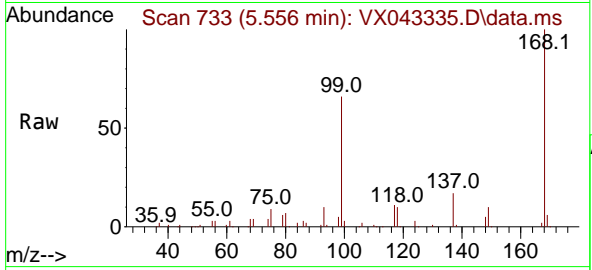
Quant Time: Oct 10 01:30:51 2024
 Quant Method : Z:\voasrv\HPCHEM1\MSVOA_X\Method\82X100124W.M
 Quant Title : SW846 8260
 QLast Update : Wed Oct 02 16:50:57 2024
 Response via : Initial Calibration



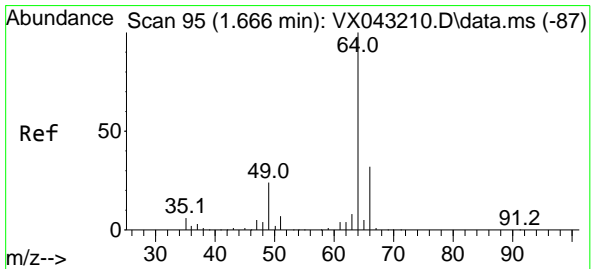
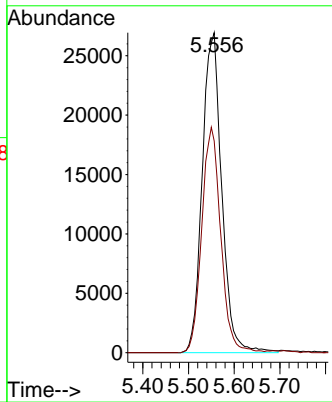
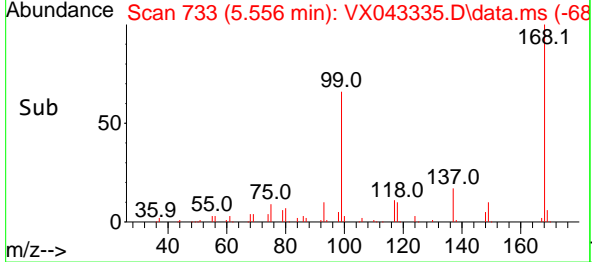


#1
 Pentafluorobenzene
 Concen: 50.000 ug/l
 RT: 5.556 min Scan# 71
 Delta R.T. 0.006 min
 Lab File: VX043335.D
 Acq: 09 Oct 2024 13:36

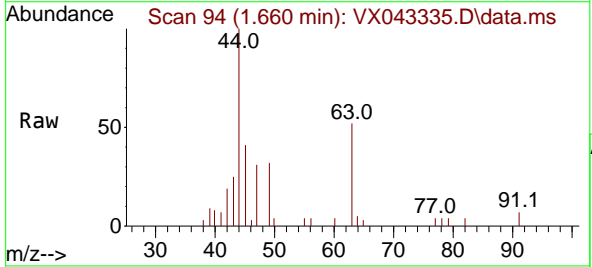
Instrument :
 MSVOA_X
 ClientSampleId :



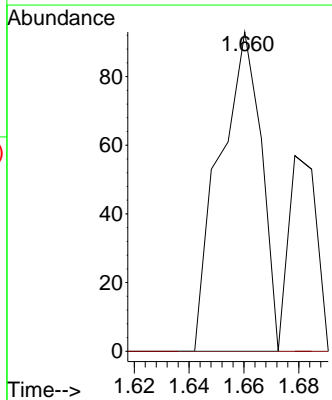
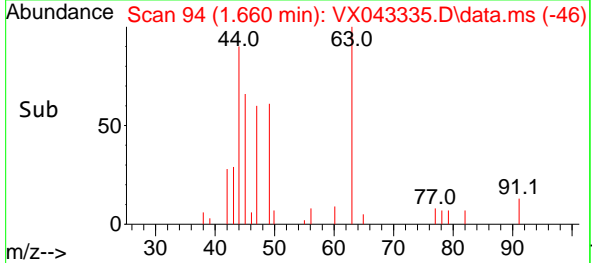
Tgt Ion:168 Resp: 79857
 Ion Ratio Lower Upper
 168 100
 99 66.2 49.7 74.5

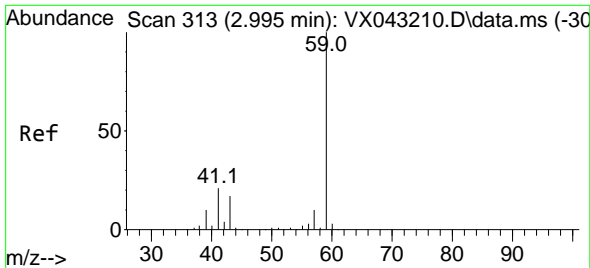


#6
 Chloroethane
 Concen: 0.275 ug/l
 RT: 1.660 min Scan# 94
 Delta R.T. -0.006 min
 Lab File: VX043335.D
 Acq: 09 Oct 2024 13:36



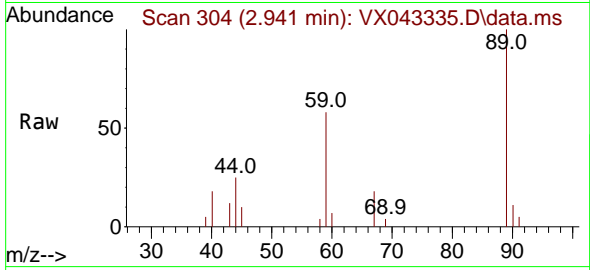
Tgt Ion: 64 Resp: 98
 Ion Ratio Lower Upper
 64 100
 66 0.0 25.8 38.8#



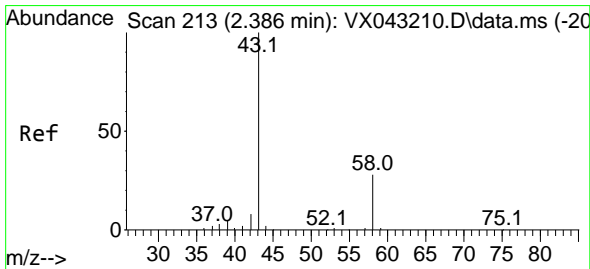
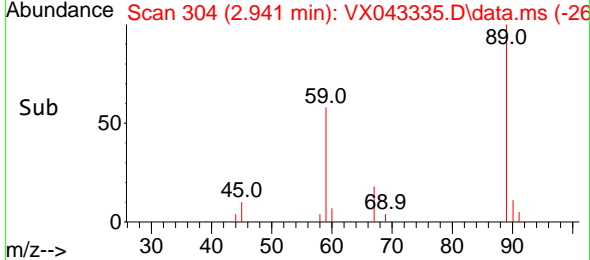
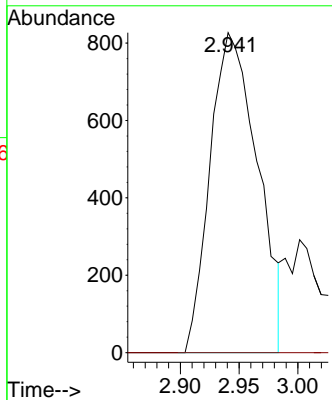


#11
 Tert butyl alcohol
 Concen: 9.368 ug/l
 RT: 2.941 min Scan# 304
 Delta R.T. -0.055 min
 Lab File: VX043335.D
 Acq: 09 Oct 2024 13:36

Instrument : MSVOA_X
 ClientSampleId :

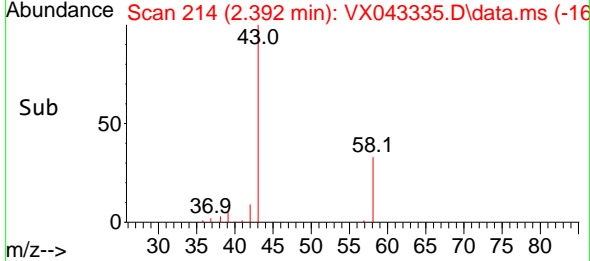
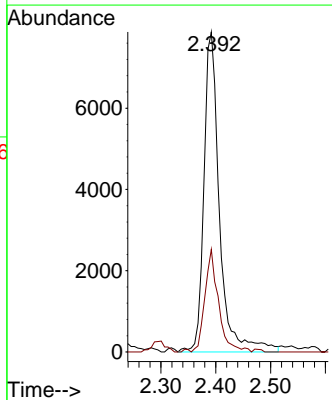
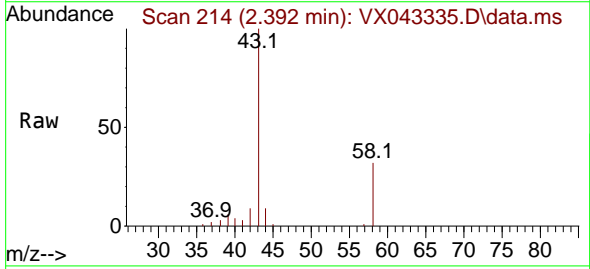


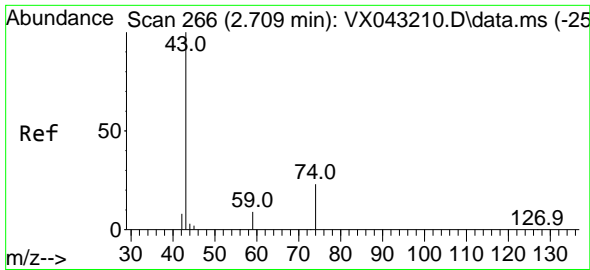
Tgt Ion: 59 Resp: 2325
 Ion Ratio Lower Upper
 59 100
 57 0.0 8.6 13.0#



#16
 Acetone
 Concen: 28.430 ug/l
 RT: 2.392 min Scan# 214
 Delta R.T. 0.006 min
 Lab File: VX043335.D
 Acq: 09 Oct 2024 13:36

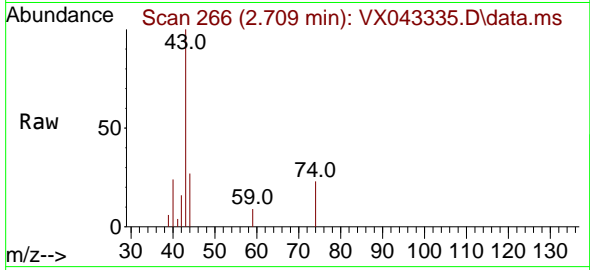
Tgt Ion: 43 Resp: 15484
 Ion Ratio Lower Upper
 43 100
 58 32.1 22.6 33.8



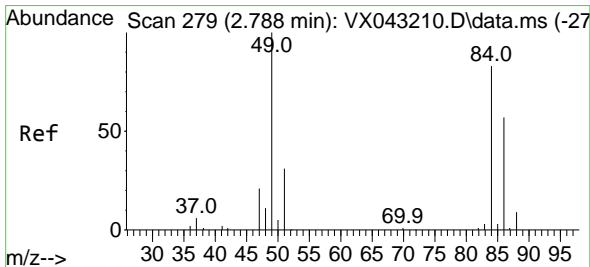
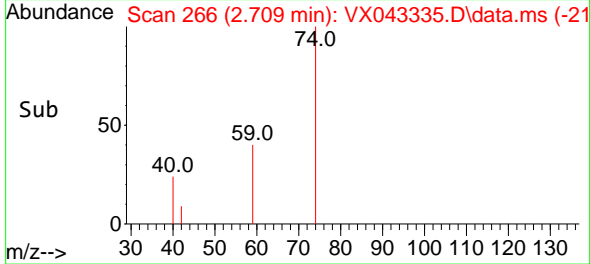
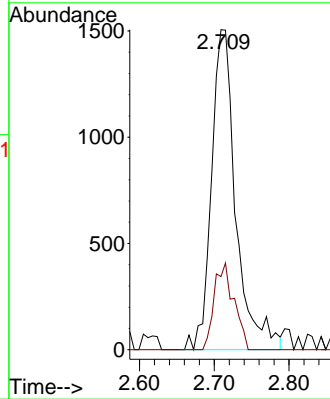


#18
 Methyl Acetate
 Concen: 2.498 ug/l
 RT: 2.709 min Scan# 20
 Delta R.T. -0.000 min
 Lab File: VX043335.D
 Acq: 09 Oct 2024 13:36

Instrument :
 MSVOA_X
 ClientSampleId :

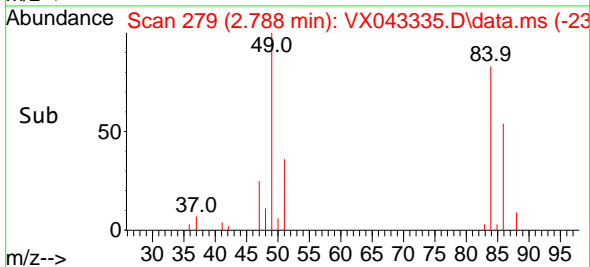
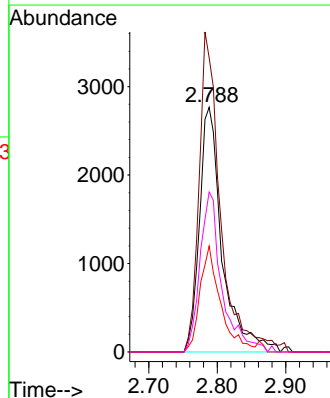
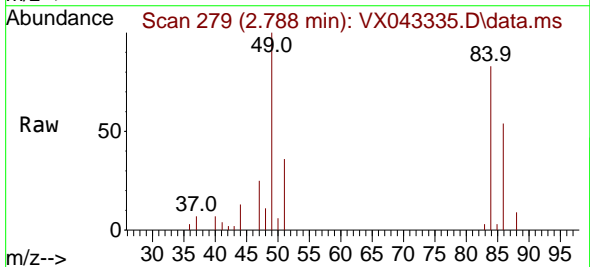


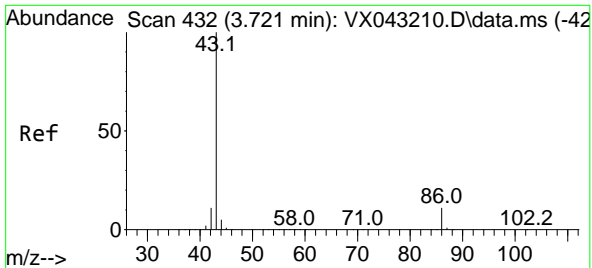
Tgt Ion: 43 Resp: 3413
 Ion Ratio Lower Upper
 43 100
 74 21.9 19.1 28.7



#20
 Methylene Chloride
 Concen: 6.347 ug/l
 RT: 2.788 min Scan# 279
 Delta R.T. 0.000 min
 Lab File: VX043335.D
 Acq: 09 Oct 2024 13:36

Tgt Ion: 84 Resp: 6374
 Ion Ratio Lower Upper
 84 100
 49 120.3 96.7 145.1
 51 43.3 30.4 45.6
 86 65.4 54.7 82.1

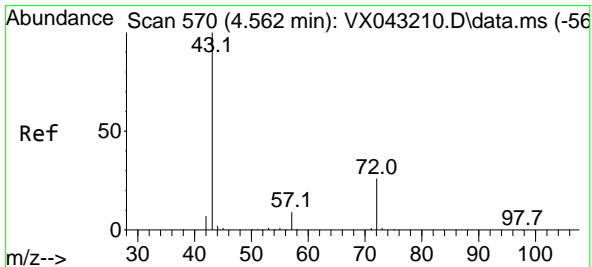
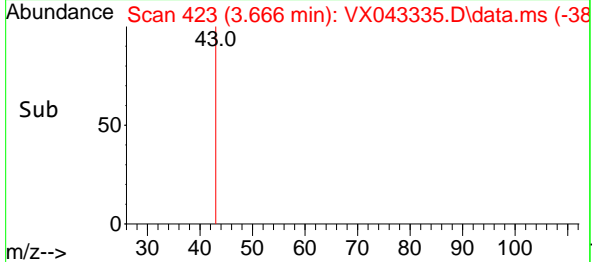
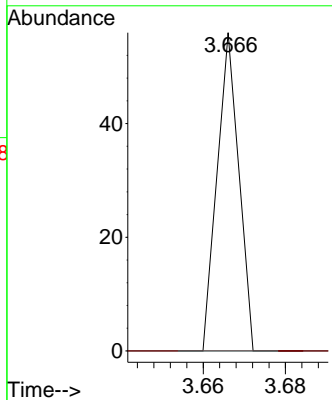
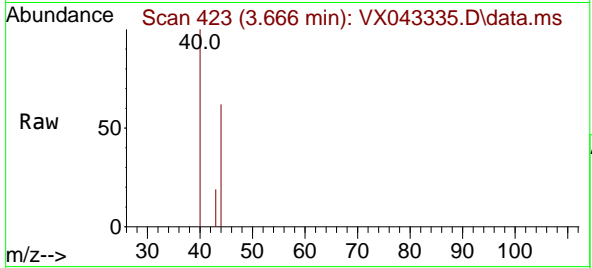




#23
 Vinyl Acetate
 Concen: 6.345 ug/l
 RT: 3.666 min Scan# 41
 Delta R.T. -0.055 min
 Lab File: VX043335.D
 Acq: 09 Oct 2024 13:36

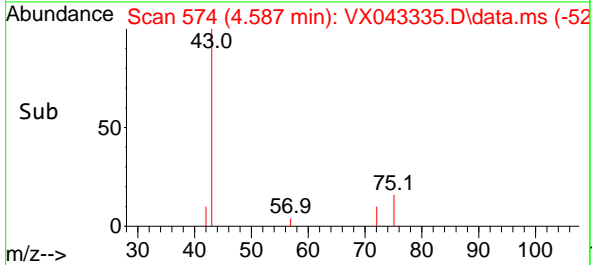
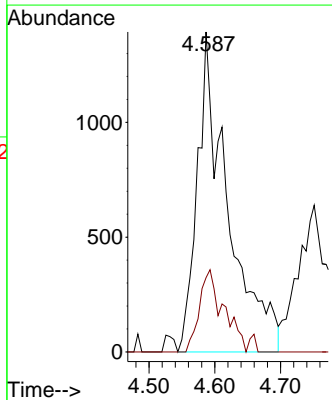
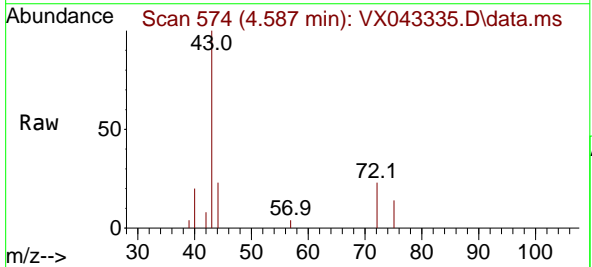
Instrument :
 MSVOA_X
 ClientSampleId :

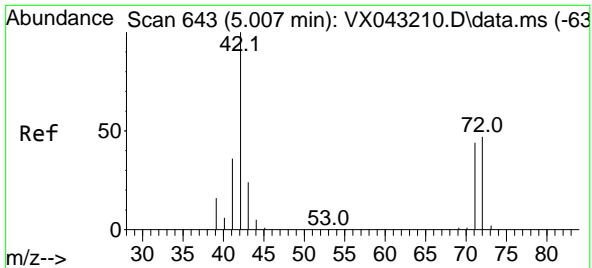
Tgt Ion: 43 Resp: 20
 Ion Ratio Lower Upper
 43 100
 86 0.0 8.8 13.2#



#25
 2-Butanone
 Concen: 5.995 ug/l
 RT: 4.587 min Scan# 574
 Delta R.T. 0.025 min
 Lab File: VX043335.D
 Acq: 09 Oct 2024 13:36

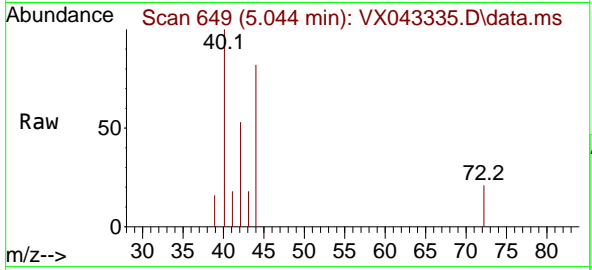
Tgt Ion: 43 Resp: 4477
 Ion Ratio Lower Upper
 43 100
 72 23.2 20.6 31.0





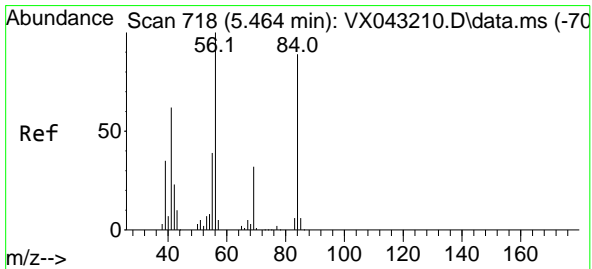
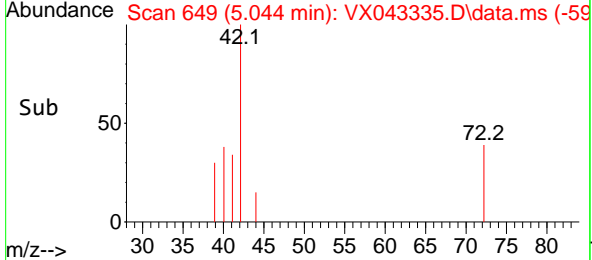
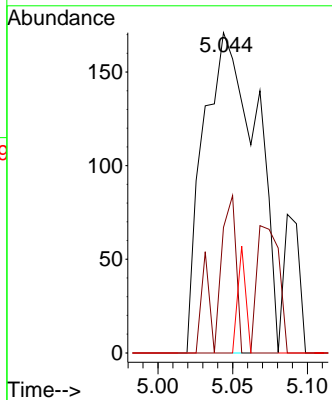
#29
 Tetrahydrofuran
 Concen: 0.887 ug/l
 RT: 5.044 min Scan# 649
 Delta R.T. 0.037 min
 Lab File: VX043335.D
 Acq: 09 Oct 2024 13:36

Instrument : MSVOA_X
 ClientSampleId :



Tgt Ion: 42 Resp: 422

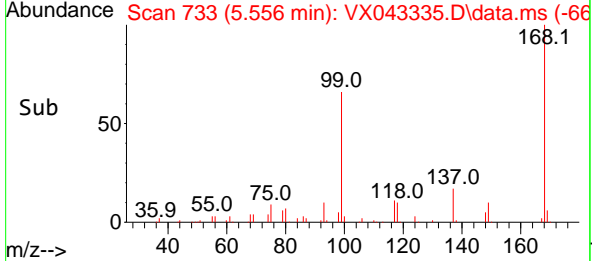
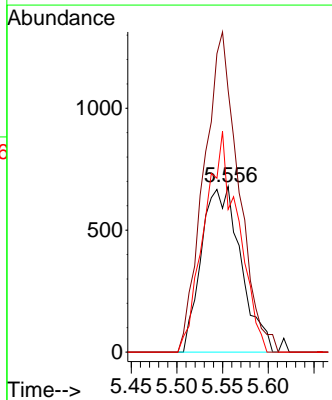
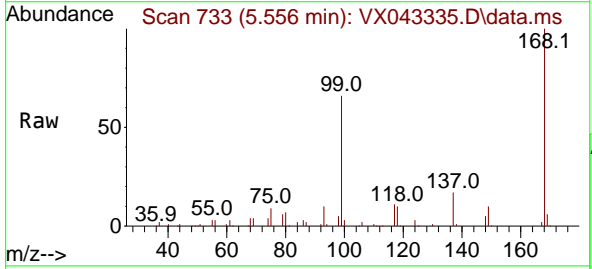
Ion	Ratio	Lower	Upper
42	100		
72	17.8	37.7	56.5#
71	5.0	34.6	52.0#

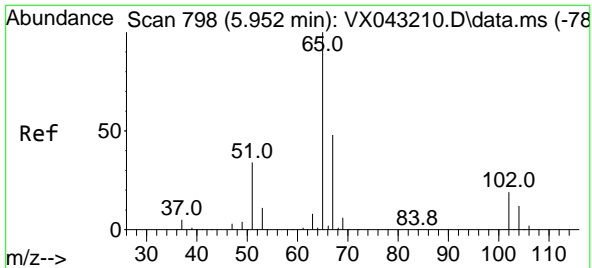


#31
 Cyclohexane
 Concen: 1.440 ug/l
 RT: 5.556 min Scan# 733
 Delta R.T. 0.091 min
 Lab File: VX043335.D
 Acq: 09 Oct 2024 13:36

Tgt Ion: 56 Resp: 2027

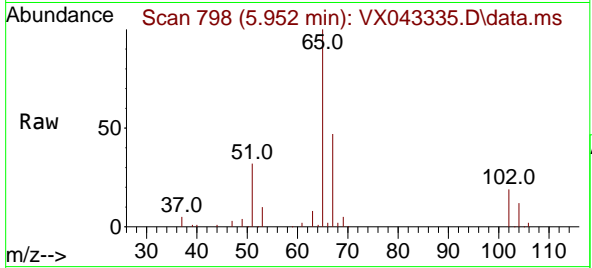
Ion	Ratio	Lower	Upper
56	100		
69	158.3	25.8	38.6#
84	86.2	71.1	106.7



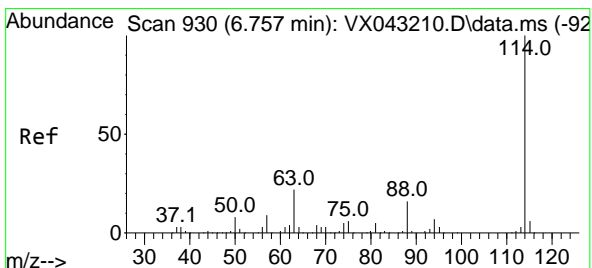
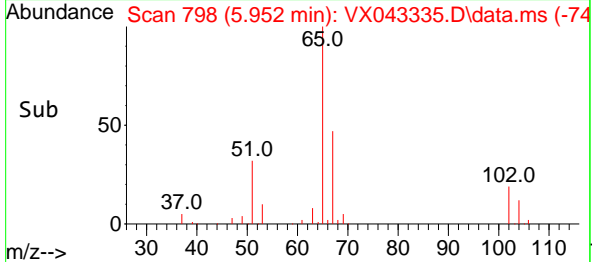
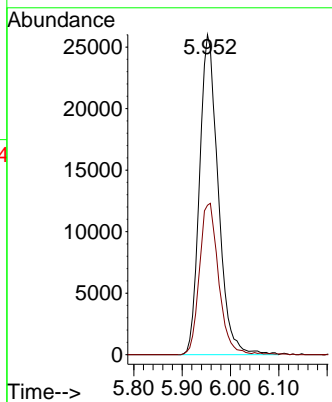


#33
 1,2-Dichloroethane-d4
 Concen: 53.412 ug/l
 RT: 5.952 min Scan# 798
 Delta R.T. 0.000 min
 Lab File: VX043335.D
 Acq: 09 Oct 2024 13:36

Instrument : MSVOA_X
 ClientSampleId :

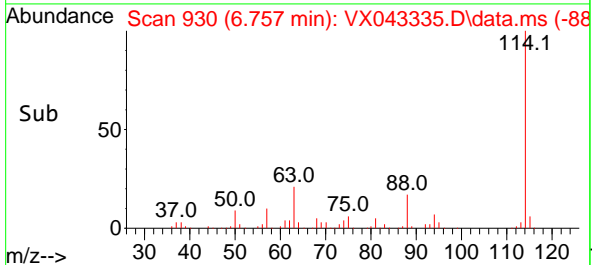
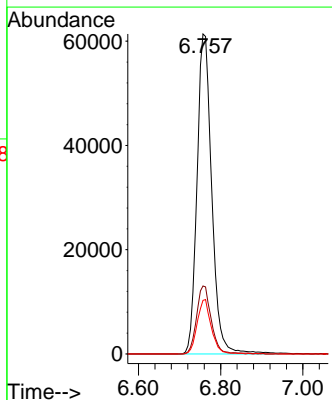
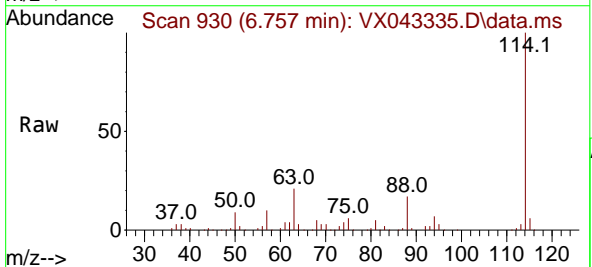


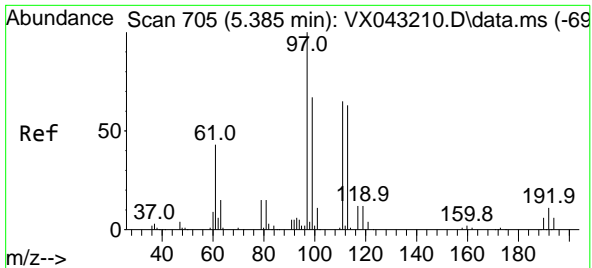
Tgt Ion: 65 Resp: 69659
 Ion Ratio Lower Upper
 65 100
 67 48.3 0.0 99.0



#34
 1,4-Difluorobenzene
 Concen: 50.000 ug/l
 RT: 6.757 min Scan# 930
 Delta R.T. 0.000 min
 Lab File: VX043335.D
 Acq: 09 Oct 2024 13:36

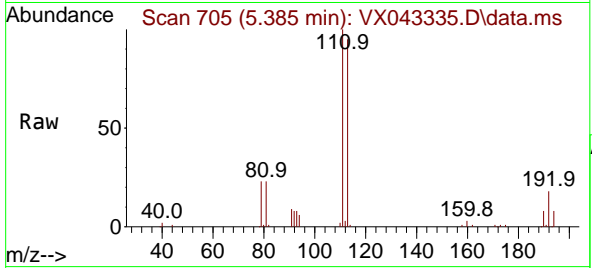
Tgt Ion: 114 Resp: 152726
 Ion Ratio Lower Upper
 114 100
 63 21.3 0.0 43.0
 88 16.8 0.0 33.0





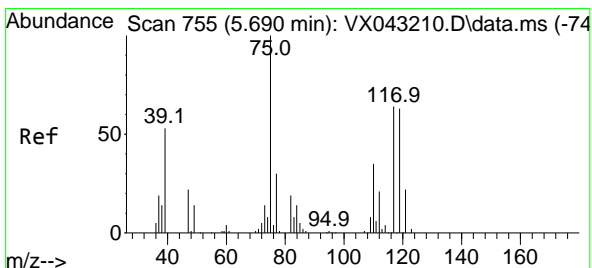
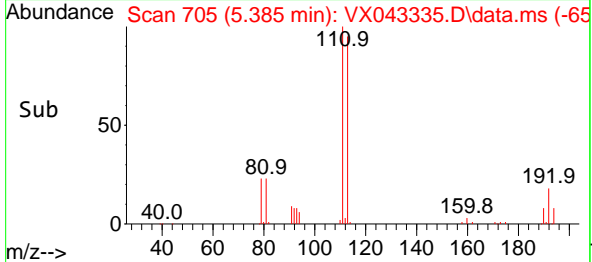
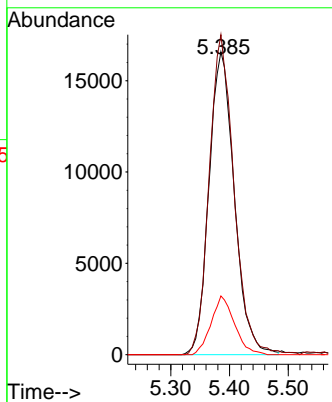
#35
 Dibromofluoromethane
 Concen: 47.043 ug/l
 RT: 5.385 min Scan# 705
 Delta R.T. 0.000 min
 Lab File: VX043335.D
 Acq: 09 Oct 2024 13:36

Instrument : MSVOA_X
 ClientSampleId :



Tgt Ion: 113 Resp: 49548

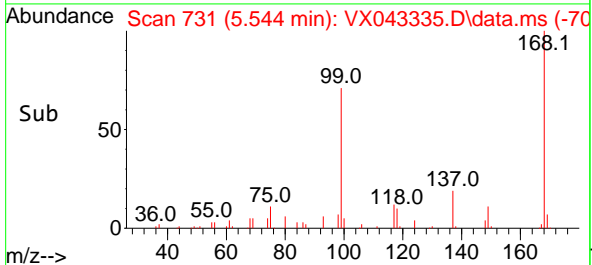
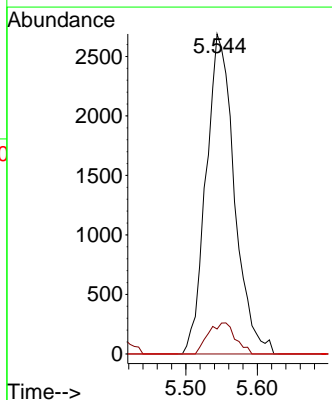
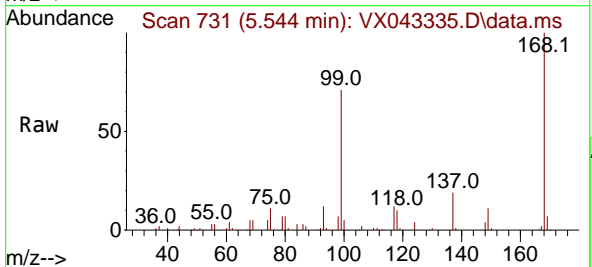
Ion	Ratio	Lower	Upper
113	100		
111	103.4	83.4	125.0
192	17.9	14.1	21.1

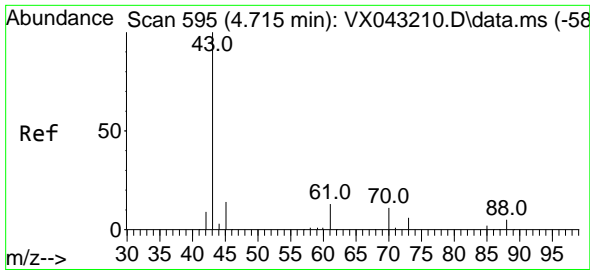


#36
 1,1-Dichloropropene
 Concen: 5.558 ug/l
 RT: 5.544 min Scan# 731
 Delta R.T. -0.146 min
 Lab File: VX043335.D
 Acq: 09 Oct 2024 13:36

Tgt Ion: 75 Resp: 7396

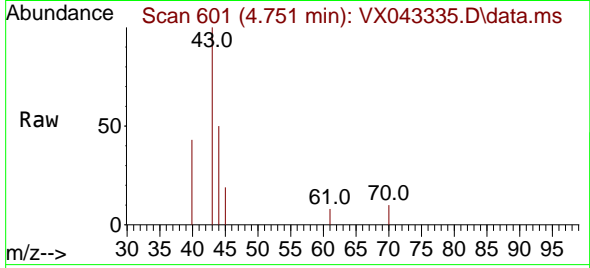
Ion	Ratio	Lower	Upper
75	100		
110	9.3	17.8	53.3#
77	0.0	24.9	37.3#





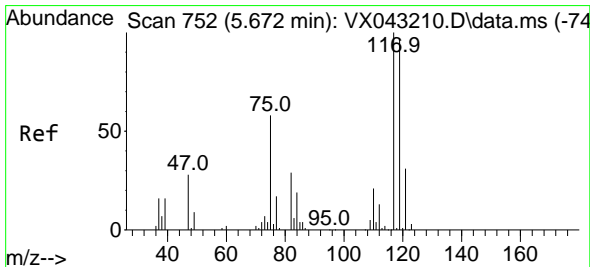
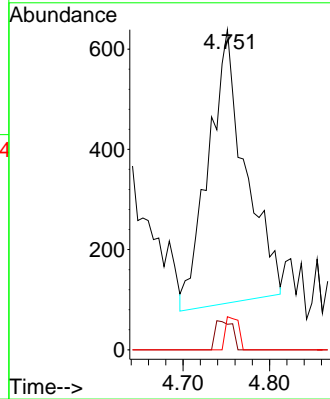
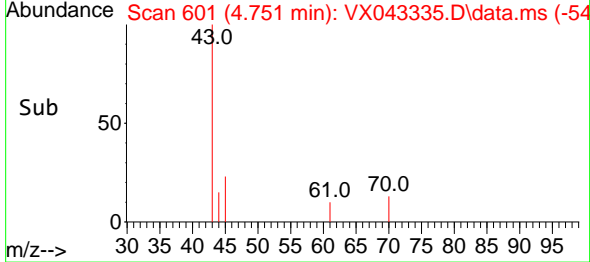
#37
 Ethyl Acetate
 Concen: 1.011 ug/l
 RT: 4.751 min Scan# 601
 Delta R.T. 0.037 min
 Lab File: VX043335.D
 Acq: 09 Oct 2024 13:36

Instrument : MSVOA_X
 ClientSampleId :

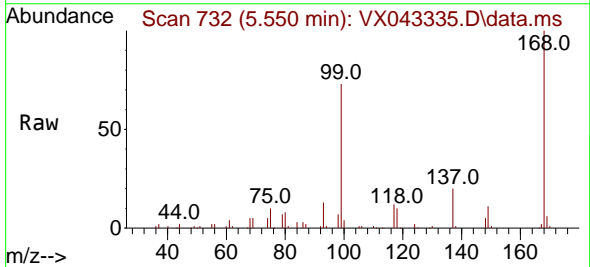


Tgt Ion: 43 Resp: 1615

Ion	Ratio	Lower	Upper
43	100		
61	4.9	11.0	16.4#
70	4.2	8.9	13.3#

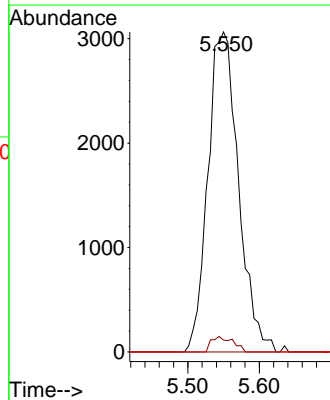
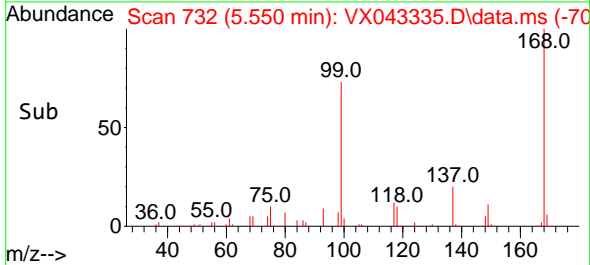


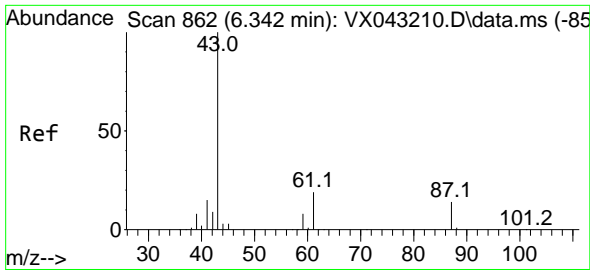
#38
 Carbon Tetrachloride
 Concen: 5.785 ug/l
 RT: 5.550 min Scan# 732
 Delta R.T. -0.122 min
 Lab File: VX043335.D
 Acq: 09 Oct 2024 13:36



Tgt Ion: 117 Resp: 9113

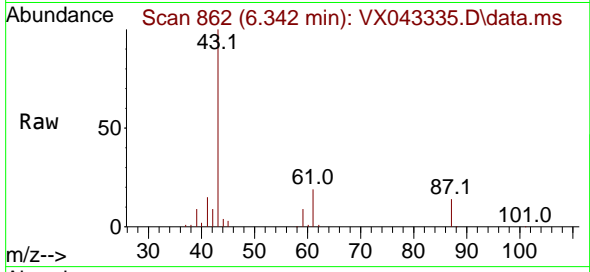
Ion	Ratio	Lower	Upper
117	100		
119	3.7	77.7	116.5#
121	0.0	24.3	36.5#



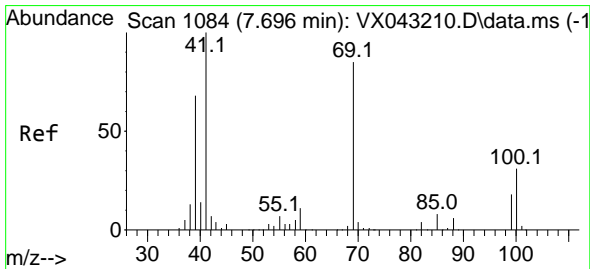
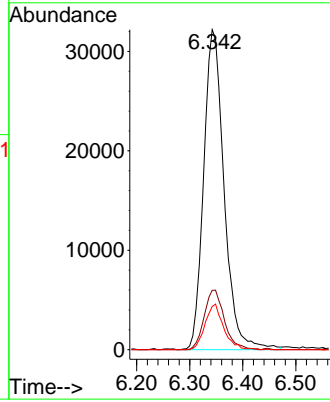
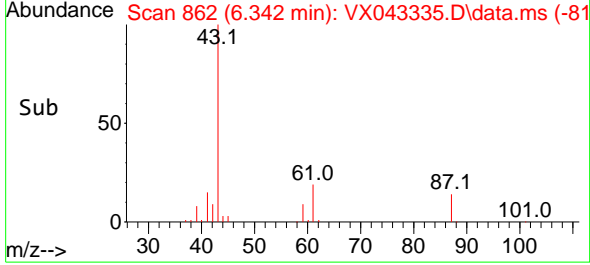


#43
 Isopropyl Acetate
 Concen: 32.671 ug/l
 RT: 6.342 min Scan# 80
 Delta R.T. 0.000 min
 Lab File: VX043335.D
 Acq: 09 Oct 2024 13:36

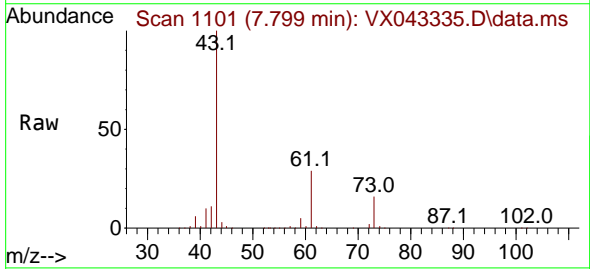
Instrument :
 MSVOA_X
 ClientSampleId :



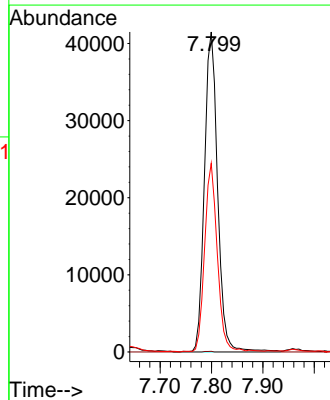
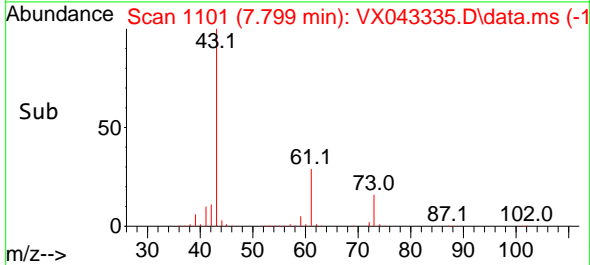
Tgt Ion: 43 Resp: 86228
 Ion Ratio Lower Upper
 43 100
 61 18.4 15.1 22.7
 87 13.0 10.8 16.2

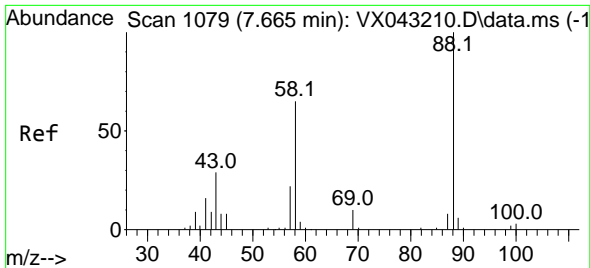


#48
 Methyl methacrylate
 Concen: 57.031 ug/l
 RT: 7.799 min Scan# 1101
 Delta R.T. 0.104 min
 Lab File: VX043335.D
 Acq: 09 Oct 2024 13:36



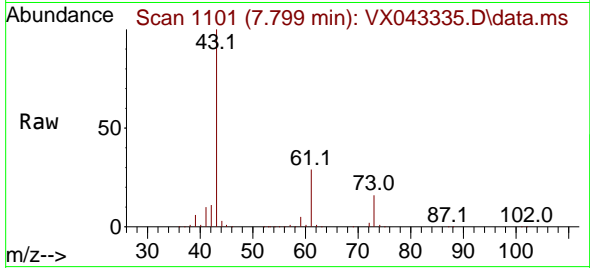
Tgt Ion: 41 Resp: 73855
 Ion Ratio Lower Upper
 41 100
 69 0.1 64.1 96.1#
 39 56.7 52.8 79.2



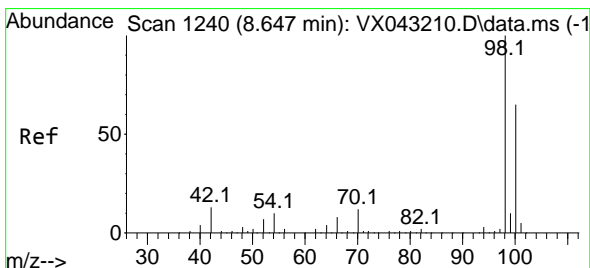
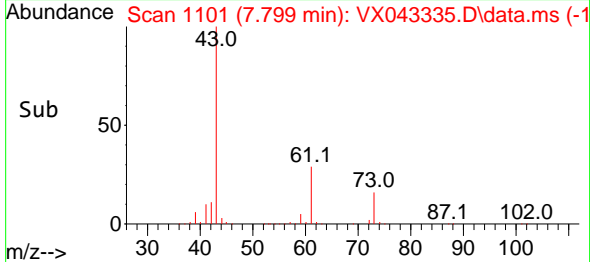
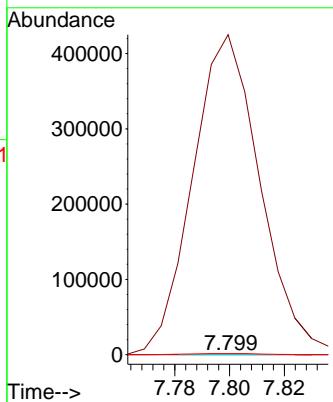


#49
 1,4-Dioxane
 Concen: 3.694 ug/l
 RT: 7.799 min Scan# 1101
 Delta R.T. 0.134 min
 Lab File: VX043335.D
 Acq: 09 Oct 2024 13:36

Instrument :
 MSVOA_X
 ClientSampleId :

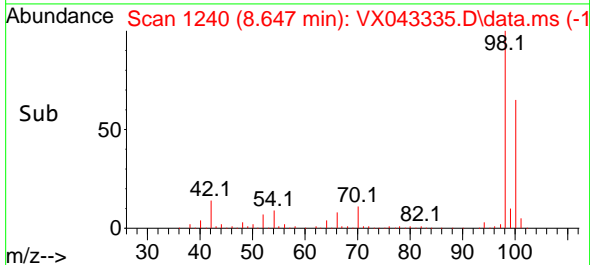
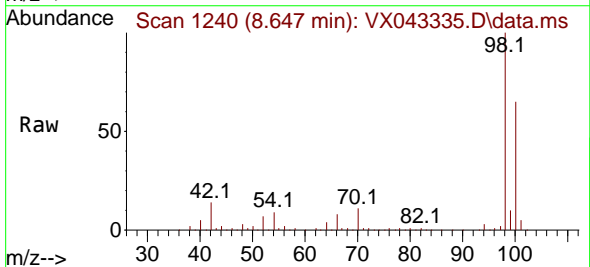
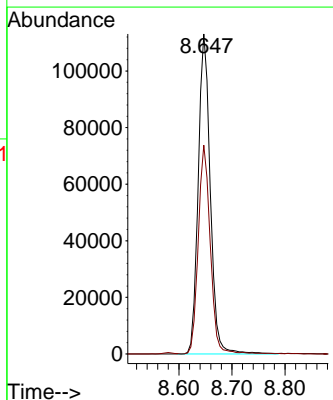


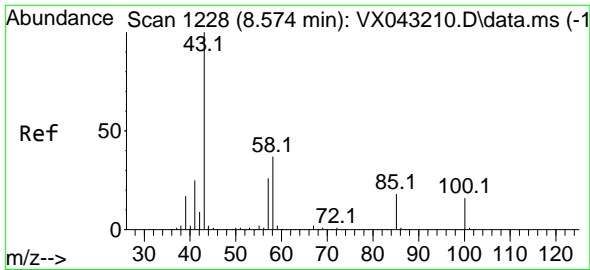
Tgt Ion: 88 Resp: 93
 Ion Ratio Lower Upper
 88 100
 43 795834.4 29.5 44.3#
 58 3187.1 55.2 82.8#



#50
 Toluene-d8
 Concen: 49.033 ug/l
 RT: 8.647 min Scan# 1240
 Delta R.T. 0.000 min
 Lab File: VX043335.D
 Acq: 09 Oct 2024 13:36

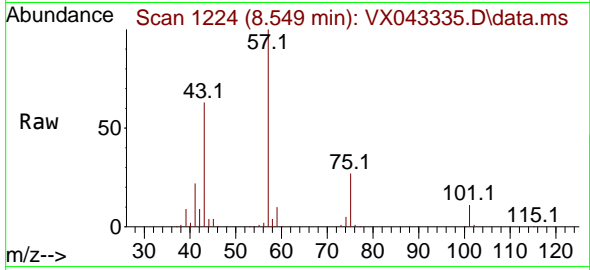
Tgt Ion: 98 Resp: 178970
 Ion Ratio Lower Upper
 98 100
 100 65.1 52.4 78.6



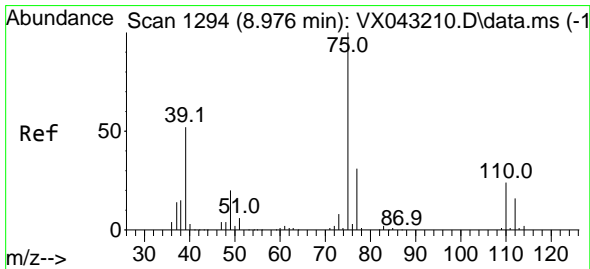
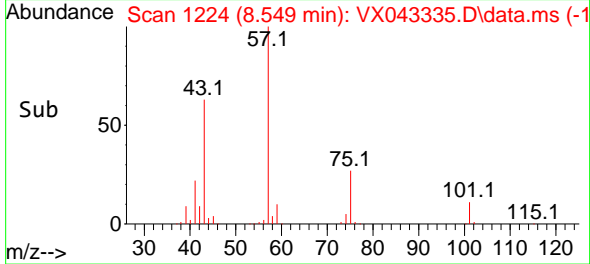
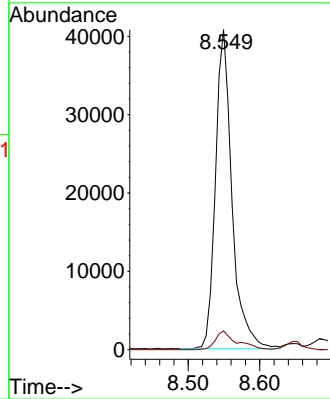


#51
 4-Methyl-2-Pentanone
 Concen: 40.719 ug/l
 RT: 8.549 min Scan# 11
 Delta R.T. -0.024 min
 Lab File: VX043335.D
 Acq: 09 Oct 2024 13:36

Instrument :
 MSVOA_X
 ClientSampleId :

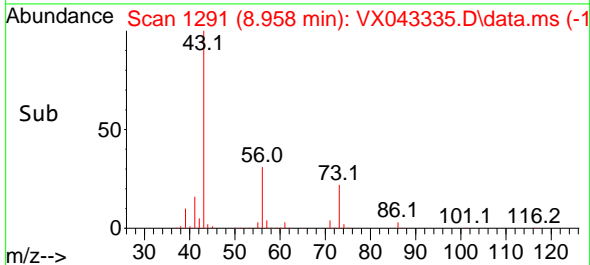
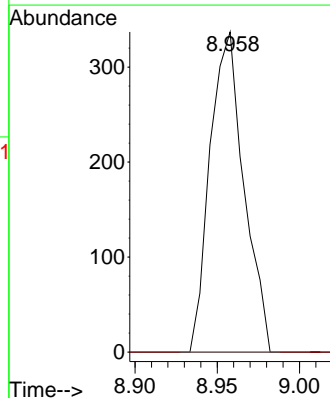
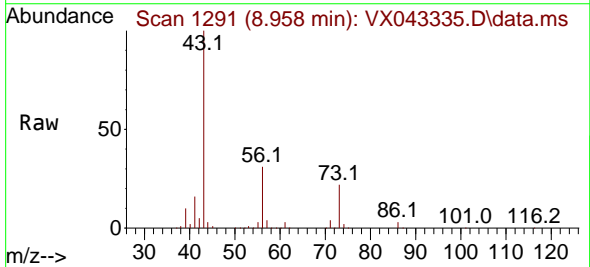


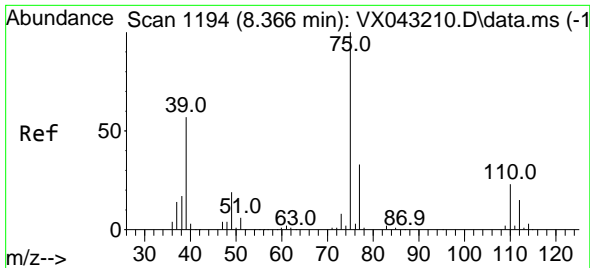
Tgt Ion: 43 Resp: 65271
 Ion Ratio Lower Upper
 43 100
 58 7.6 30.0 45.0#



#53
 t-1,3-Dichloropropene
 Concen: 0.312 ug/l
 RT: 8.958 min Scan# 1291
 Delta R.T. -0.018 min
 Lab File: VX043335.D
 Acq: 09 Oct 2024 13:36

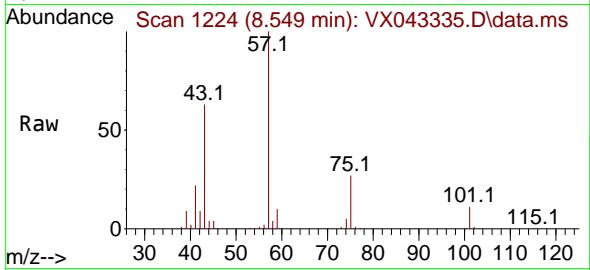
Tgt Ion: 75 Resp: 484
 Ion Ratio Lower Upper
 75 100
 77 0.0 25.1 37.7#



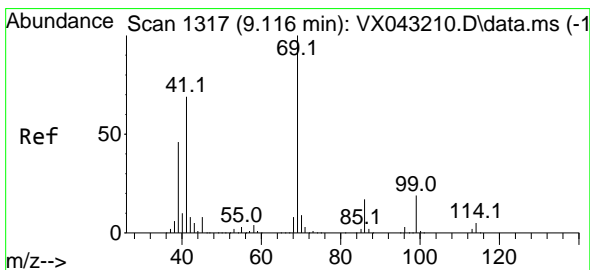
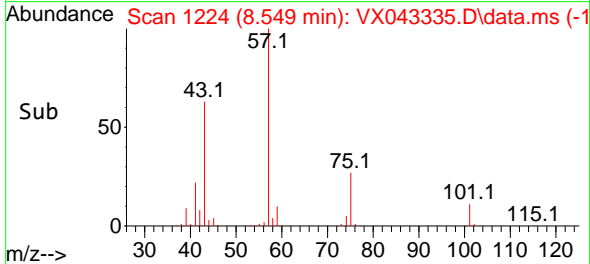
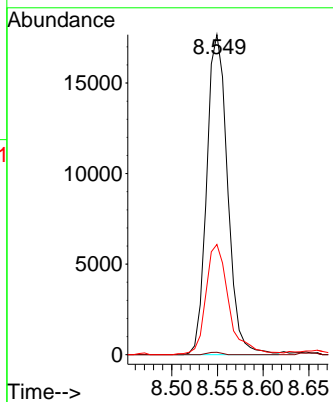


#54
 cis-1,3-Dichloropropene
 Concen: 16.867 ug/l
 RT: 8.549 min Scan# 1194
 Delta R.T. 0.183 min
 Lab File: VX043335.D
 Acq: 09 Oct 2024 13:36

Instrument : MSVOA_X
 ClientSampleId :

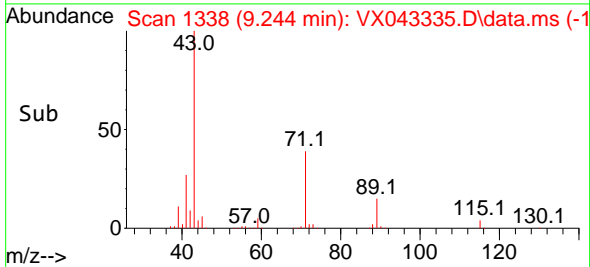
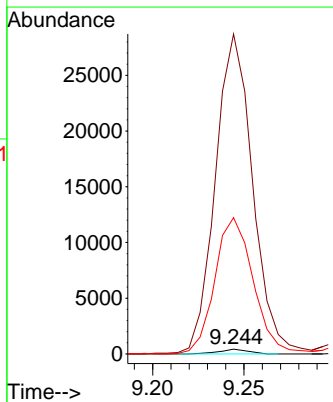
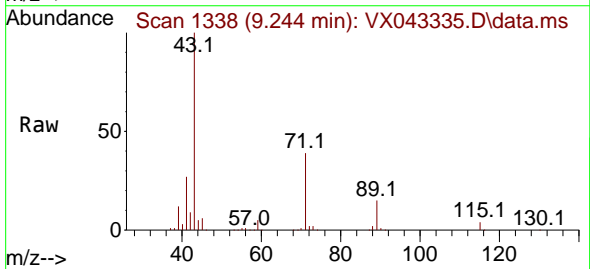


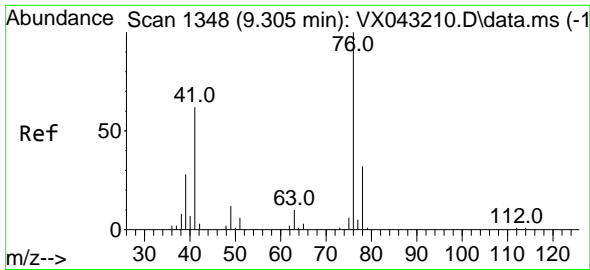
Tgt Ion: 75 Resp: 28038
 Ion Ratio Lower Upper
 75 100
 77 0.8 26.0 39.0#
 39 34.2 45.8 68.8#



#56
 Ethyl methacrylate
 Concen: 0.295 ug/l
 RT: 9.244 min Scan# 1338
 Delta R.T. 0.128 min
 Lab File: VX043335.D
 Acq: 09 Oct 2024 13:36

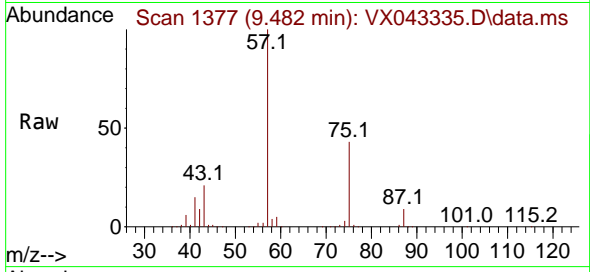
Tgt Ion: 69 Resp: 484
 Ion Ratio Lower Upper
 69 100
 41 8475.0 56.1 84.1#
 39 3718.4 36.4 54.6#



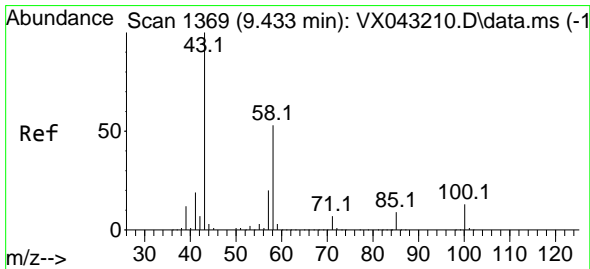
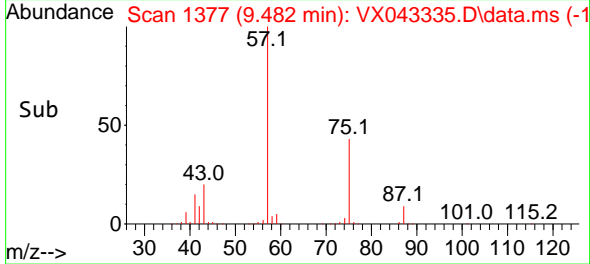
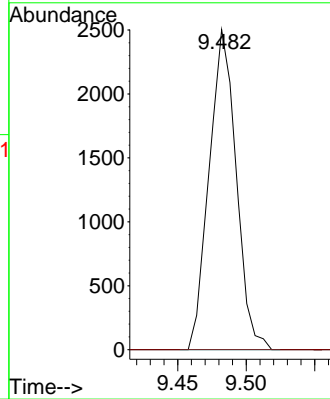


#57
 1,3-Dichloropropane
 Concen: 2.008 ug/l
 RT: 9.482 min Scan# 1377
 Delta R.T. 0.177 min
 Lab File: VX043335.D
 Acq: 09 Oct 2024 13:36

Instrument :
 MSVOA_X
 ClientSampleId :

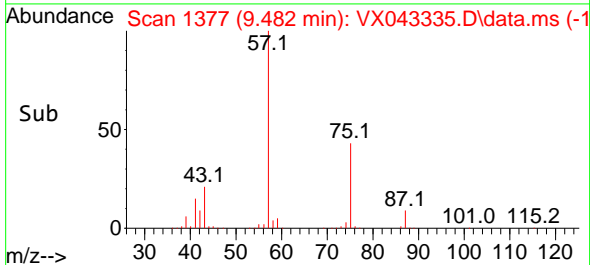
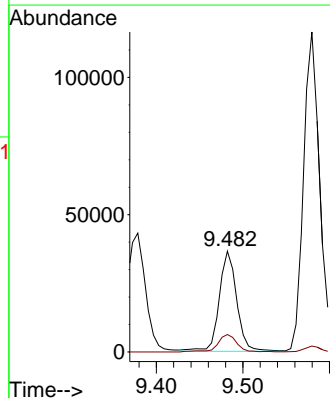
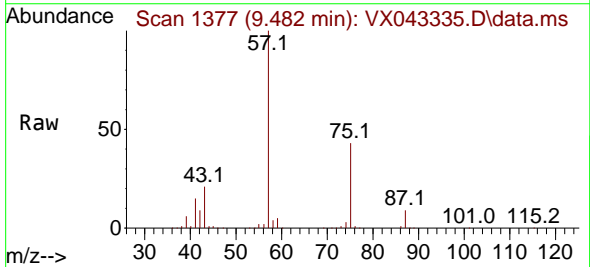


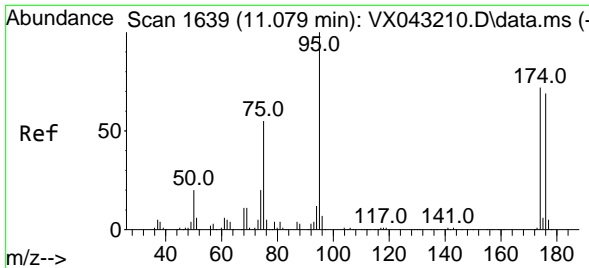
Tgt Ion: 76 Resp: 3436
 Ion Ratio Lower Upper
 76 100
 78 0.0 25.7 38.5#



#59
 2-Hexanone
 Concen: 42.371 ug/l
 RT: 9.482 min Scan# 1377
 Delta R.T. 0.049 min
 Lab File: VX043335.D
 Acq: 09 Oct 2024 13:36

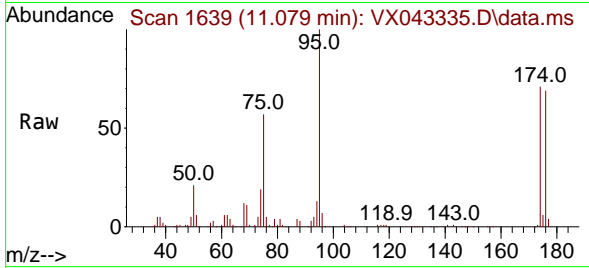
Tgt Ion: 43 Resp: 51361
 Ion Ratio Lower Upper
 43 100
 58 19.2 26.1 78.3#



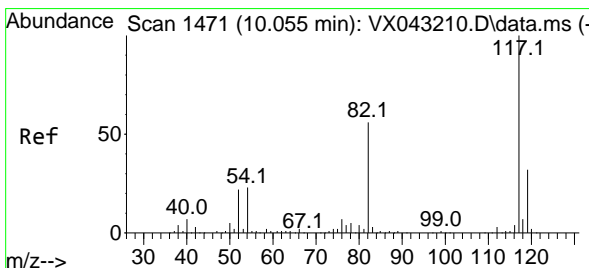
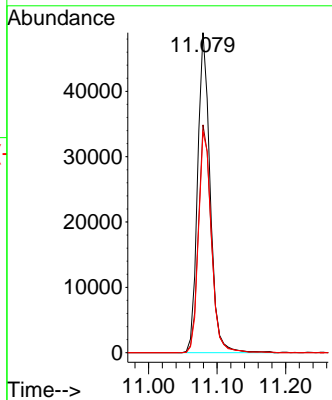
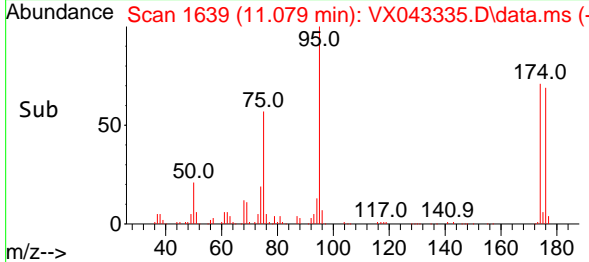


#62
 4-Bromofluorobenzene
 Concen: 46.930 ug/l
 RT: 11.079 min Scan# 1639
 Delta R.T. 0.000 min
 Lab File: VX043335.D
 Acq: 09 Oct 2024 13:36

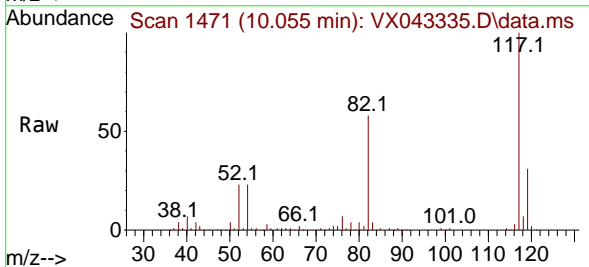
Instrument : MSVOA_X
 ClientSampleId :



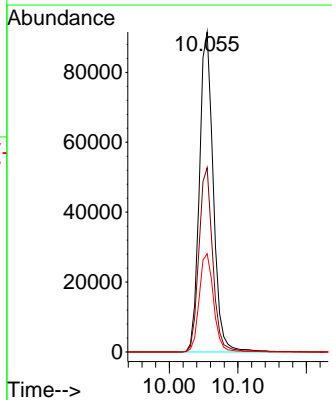
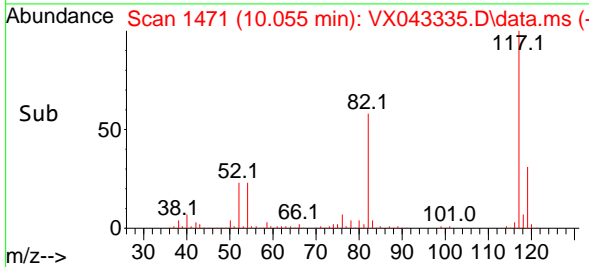
Tgt Ion: 95 Resp: 62230
 Ion Ratio Lower Upper
 95 100
 174 72.9 0.0 145.0
 176 71.5 0.0 143.0

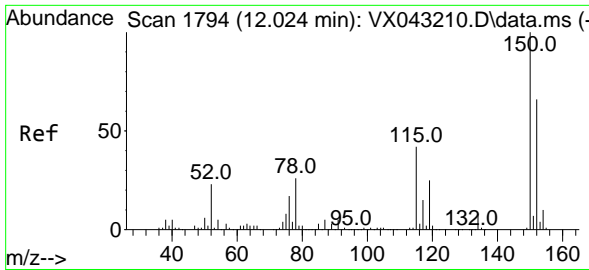


#63
 Chlorobenzene-d5
 Concen: 50.000 ug/l
 RT: 10.055 min Scan# 1471
 Delta R.T. 0.000 min
 Lab File: VX043335.D
 Acq: 09 Oct 2024 13:36



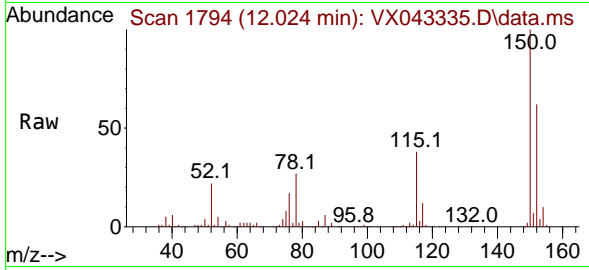
Tgt Ion: 117 Resp: 129225
 Ion Ratio Lower Upper
 117 100
 82 57.6 45.0 67.6
 119 30.7 25.3 37.9



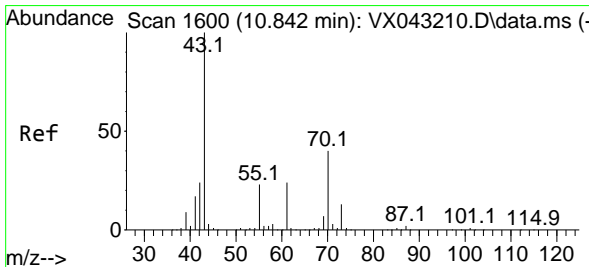
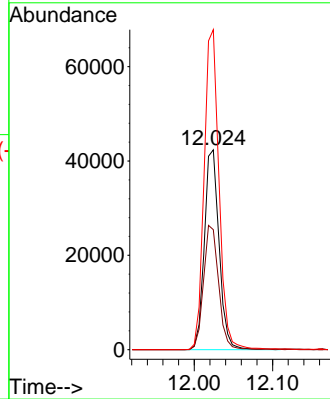
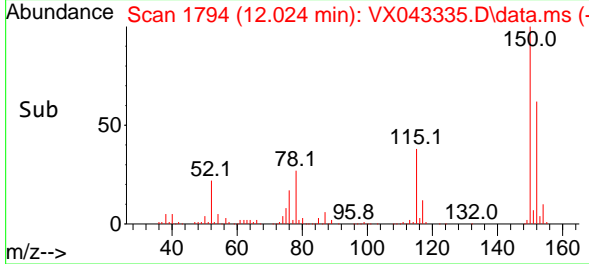


#72
 1,4-Dichlorobenzene-d4
 Concen: 50.000 ug/l
 RT: 12.024 min Scan# 1
 Delta R.T. 0.000 min
 Lab File: VX043335.D
 Acq: 09 Oct 2024 13:36

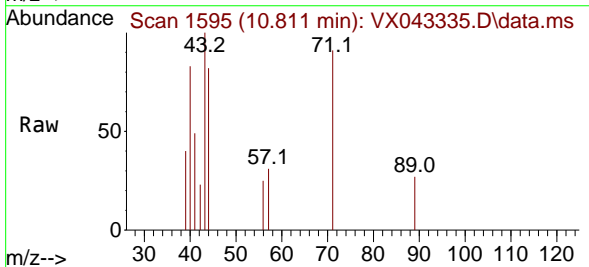
Instrument :
 MSVOA_X
 ClientSampleId :



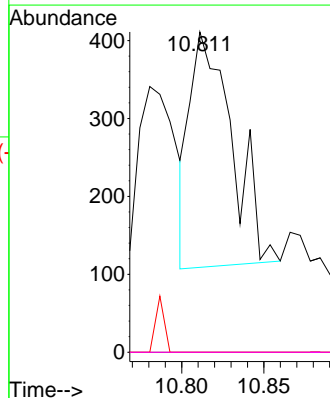
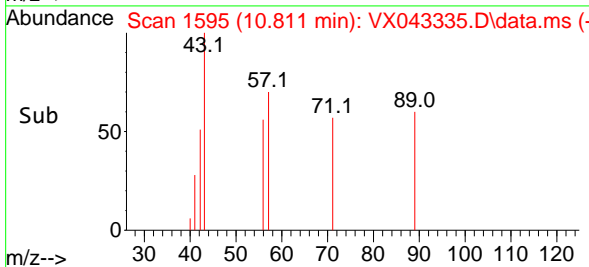
Tgt Ion:152 Resp: 55471
 Ion Ratio Lower Upper
 152 100
 115 63.3 44.1 132.3
 150 161.5 0.0 347.4

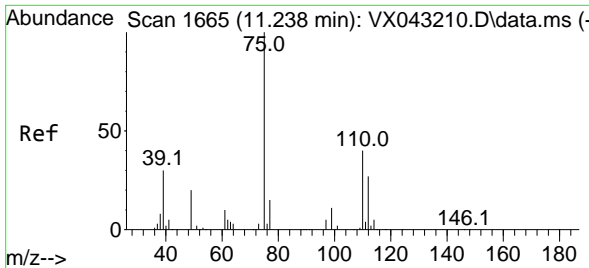


#74
 N-amy1 acetate
 Concen: 0.261 ug/l
 RT: 10.811 min Scan# 1595
 Delta R.T. -0.030 min
 Lab File: VX043335.D
 Acq: 09 Oct 2024 13:36



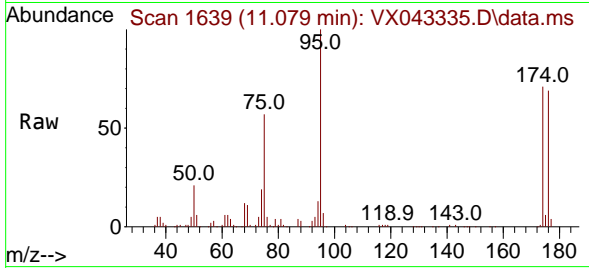
Tgt Ion: 43 Resp: 534
 Ion Ratio Lower Upper
 43 100
 70 0.0 33.1 49.7#
 55 0.0 18.6 27.8#
 61 0.0 18.7 28.1#



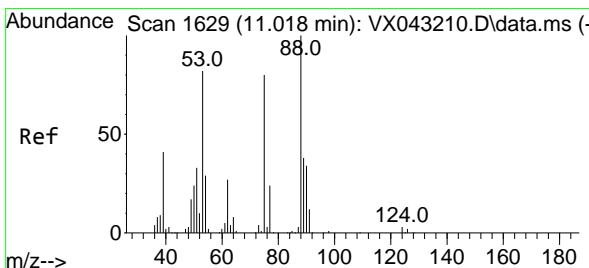
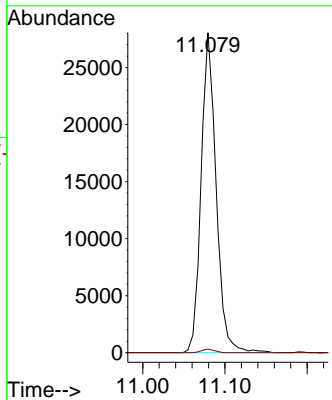
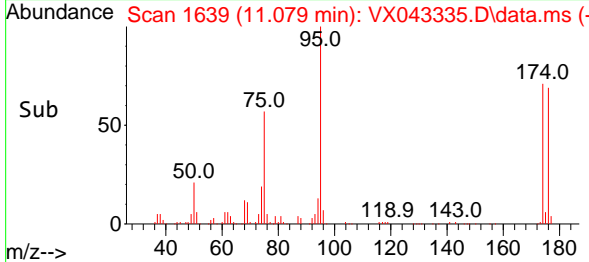


#76
 1,2,3-Trichloropropane
 Concen: 28.885 ug/l
 RT: 11.079 min Scan# 1639
 Delta R.T. -0.158 min
 Lab File: VX043335.D
 Acq: 09 Oct 2024 13:36

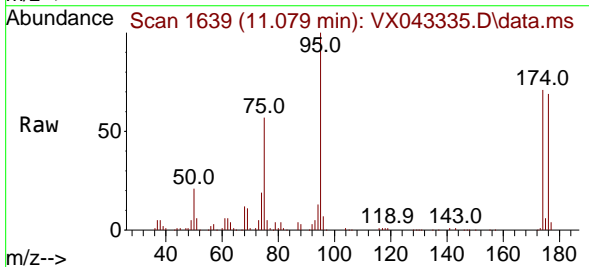
Instrument : MSVOA_X
 ClientSampleId :



Tgt Ion: 75 Resp: 35540
 Ion Ratio Lower Upper
 75 100
 77 0.9 22.0 66.0#



#81
 trans-1,4-Dichloro-2-butene
 Concen: 74.859 ug/l
 RT: 11.079 min Scan# 1639
 Delta R.T. 0.061 min
 Lab File: VX043335.D
 Acq: 09 Oct 2024 13:36



Tgt Ion: 75 Resp: 35540
 Ion Ratio Lower Upper
 75 100
 53 0.0 83.9 125.9#
 89 0.0 38.6 58.0#

