

Data Path : Z:\voasrv\HPCHEM1\MSVOA_X\Data\VX100924\
 Data File : VX043337.D
 Acq On : 09 Oct 2024 14:22
 Operator : JC/MD
 Sample : PB163972ZHE#06
 Misc : 5.0mL/MSVOA_X/WATER
 ALS Vial : 13 Sample Multiplier: 1

Instrument :
 MSVOA_X
 ClientSampleId :

Quant Time: Oct 10 01:31:47 2024
 Quant Method : Z:\voasrv\HPCHEM1\MSVOA_X\Method\82X100124W.M
 Quant Title : SW846 8260
 QLast Update : Wed Oct 02 16:50:57 2024
 Response via : Initial Calibration

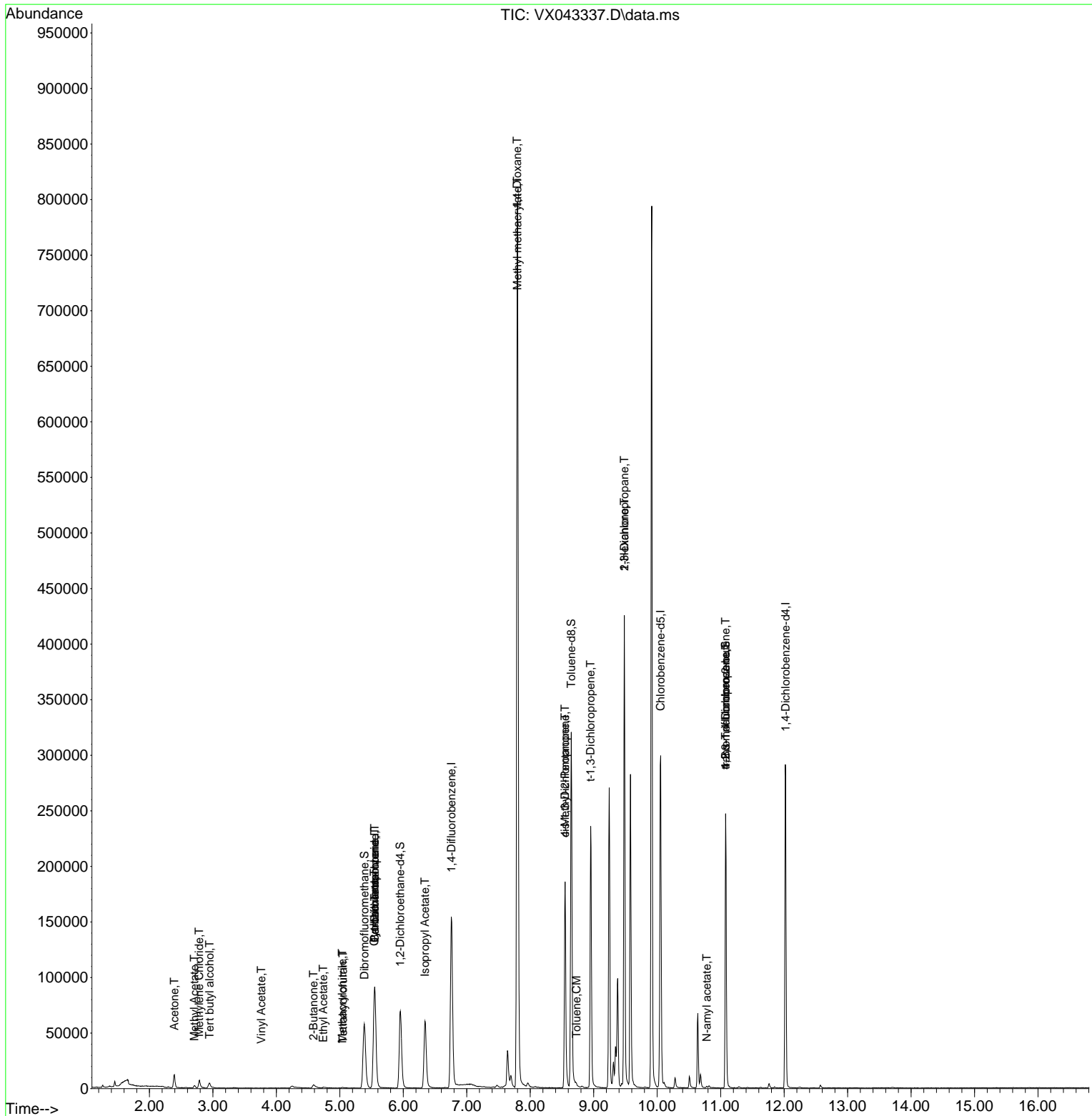
Compound	R.T.	QIon	Response	Conc	Units	Dev(Min)
Internal Standards						
1) Pentafluorobenzene	5.550	168	83387	50.000	ug/l	0.00
34) 1,4-Difluorobenzene	6.757	114	155882	50.000	ug/l	0.00
63) Chlorobenzene-d5	10.055	117	132559	50.000	ug/l	0.00
72) 1,4-Dichlorobenzene-d4	12.024	152	58033	50.000	ug/l	0.00
System Monitoring Compounds						
33) 1,2-Dichloroethane-d4	5.952	65	71747	52.684	ug/l	0.00
Spiked Amount	50.000	Range 74 - 125	Recovery	=	105.360%	
35) Dibromofluoromethane	5.385	113	50988	47.430	ug/l	0.00
Spiked Amount	50.000	Range 75 - 124	Recovery	=	94.860%	
50) Toluene-d8	8.647	98	182812	49.071	ug/l	0.00
Spiked Amount	50.000	Range 86 - 113	Recovery	=	98.140%	
62) 4-Bromofluorobenzene	11.079	95	65407	48.327	ug/l	0.00
Spiked Amount	50.000	Range 77 - 121	Recovery	=	96.660%	
Target Compounds						
						Qvalue
11) Tert butyl alcohol	2.947	59	2923	11.279	ug/l #	71
16) Acetone	2.392	43	14877	26.159	ug/l	99
18) Methyl Acetate	2.709	43	2959	2.074	ug/l	90
20) Methylene Chloride	2.782	84	3596	3.429	ug/l #	92
23) Vinyl Acetate	3.764	43	64	6.358	ug/l #	71
25) 2-Butanone	4.587	43	5880	7.541	ug/l	94
29) Tetrahydrofuran	5.050	42	492	0.990	ug/l #	52
31) Cyclohexane	5.544	56	2163	1.472	ug/l #	43
36) 1,1-Dichloropropene	5.550	75	7376	5.431	ug/l #	50
37) Ethyl Acetate	4.739	43	1061	0.651	ug/l #	70
38) Carbon Tetrachloride	5.550	117	9319	5.796	ug/l #	17
41) Methacrylonitrile	5.038	41	185	0.218	ug/l #	4
43) Isopropyl Acetate	6.342	43	86466	32.098	ug/l	99
48) Methyl methacrylate	7.799	41	75196	56.891	ug/l #	45
49) 1,4-Dioxane	7.793	88	127	4.943	ug/l #	1
51) 4-Methyl-2-Pentanone	8.549	43	67646	41.346	ug/l #	50
52) Toluene	8.726	92	727	0.282	ug/l	91
53) t-1,3-Dichloropropene	8.952	75	517	0.327	ug/l #	43
54) cis-1,3-Dichloropropene	8.549	75	29227	17.226	ug/l #	57
57) 1,3-Dichloropropane	9.482	76	3316	1.898	ug/l #	43
59) 2-Hexanone	9.482	43	53773	43.462	ug/l #	51
74) N-amyl acetate	10.781	43	703	0.328	ug/l #	51
76) 1,2,3-Trichloropropane	11.079	75	36460	28.324	ug/l #	33
81) trans-1,4-Dichloro-2-b...	11.079	75	36460	73.407	ug/l #	8

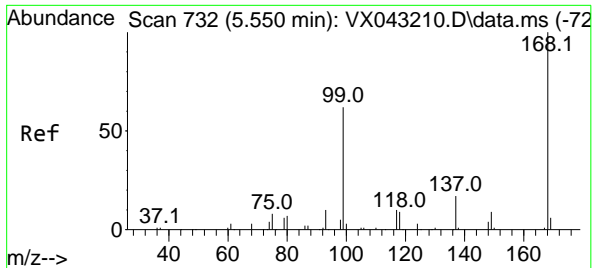
(#) = qualifier out of range (m) = manual integration (+) = signals summed

Data Path : Z:\voasrv\HPCHEM1\MSVOA_X\Data\VX100924\
 Data File : VX043337.D
 Acq On : 09 Oct 2024 14:22
 Operator : JC/MD
 Sample : PB163972ZHE#06
 Misc : 5.0mL/MSVOA_X/WATER
 ALS Vial : 13 Sample Multiplier: 1

Instrument :
 MSVOA_X
 ClientSampleId :

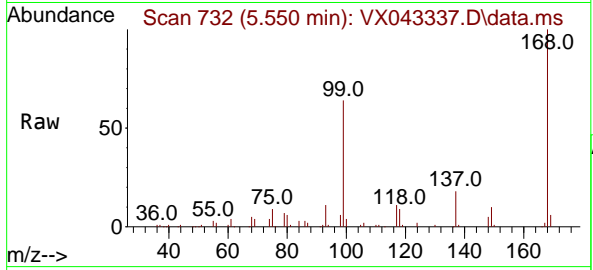
Quant Time: Oct 10 01:31:47 2024
 Quant Method : Z:\voasrv\HPCHEM1\MSVOA_X\Method\82X100124W.M
 Quant Title : SW846 8260
 QLast Update : Wed Oct 02 16:50:57 2024
 Response via : Initial Calibration



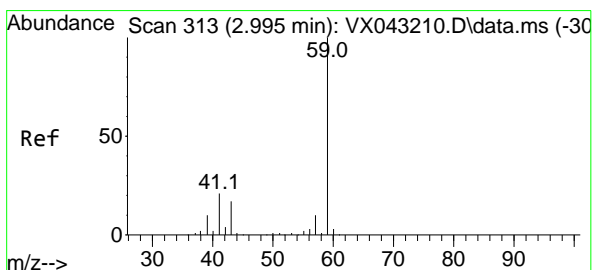
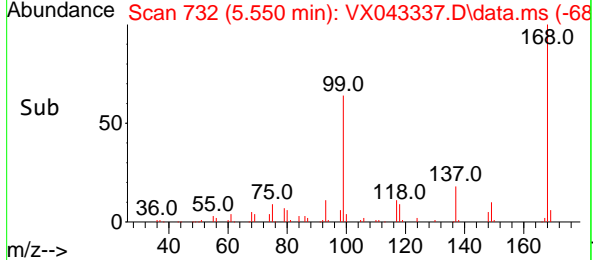
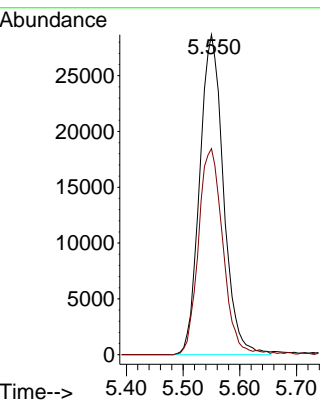


#1
 Pentafluorobenzene
 Concen: 50.000 ug/l
 RT: 5.550 min Scan# 71
 Delta R.T. -0.000 min
 Lab File: VX043337.D
 Acq: 09 Oct 2024 14:22

Instrument : MSVOA_X
 ClientSampleId :

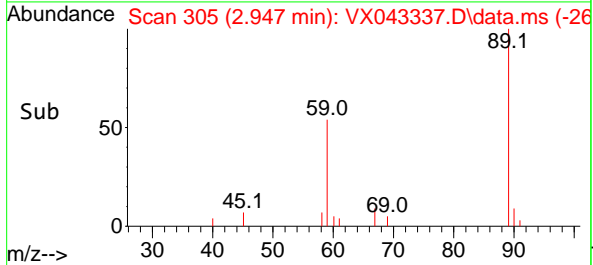
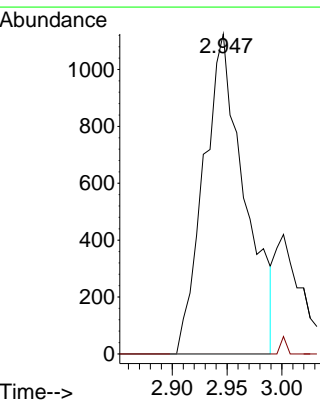
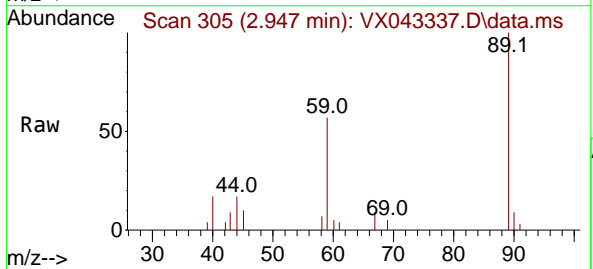


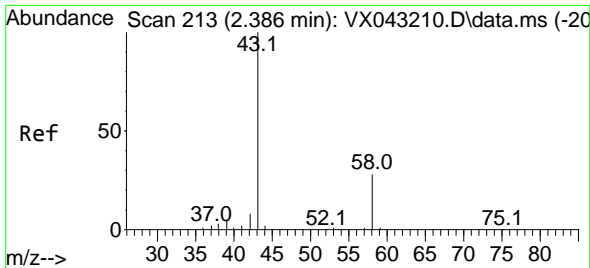
Tgt Ion:168 Resp: 83387
 Ion Ratio Lower Upper
 168 100
 99 64.4 49.7 74.5



#11
 Tert butyl alcohol
 Concen: 11.279 ug/l
 RT: 2.947 min Scan# 305
 Delta R.T. -0.049 min
 Lab File: VX043337.D
 Acq: 09 Oct 2024 14:22

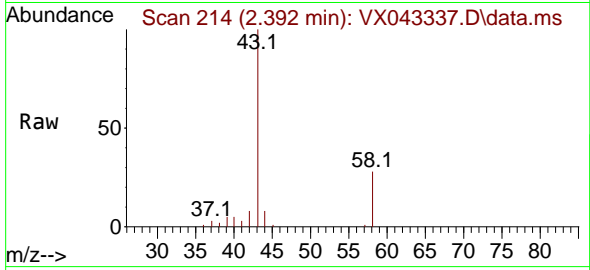
Tgt Ion: 59 Resp: 2923
 Ion Ratio Lower Upper
 59 100
 57 0.0 8.6 13.0#



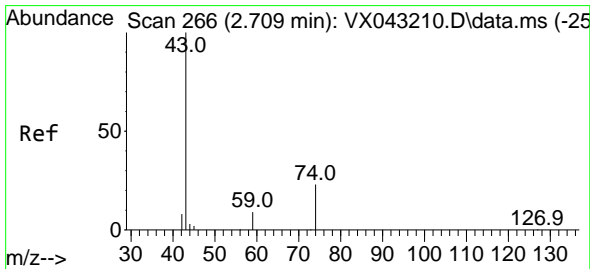
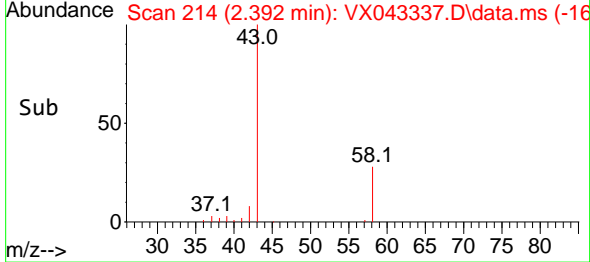
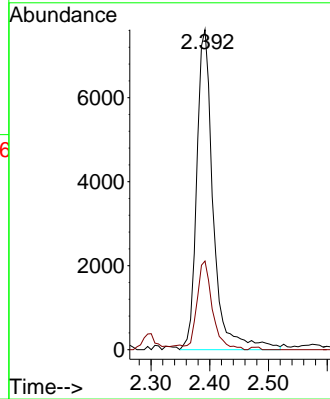


#16
 Acetone
 Concen: 26.159 ug/l
 RT: 2.392 min Scan# 214
 Delta R.T. 0.006 min
 Lab File: VX043337.D
 Acq: 09 Oct 2024 14:22

Instrument :
 MSVOA_X
 ClientSampleId :

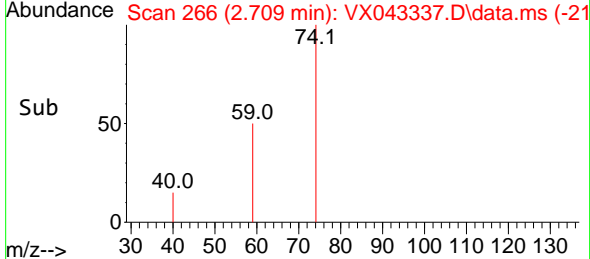
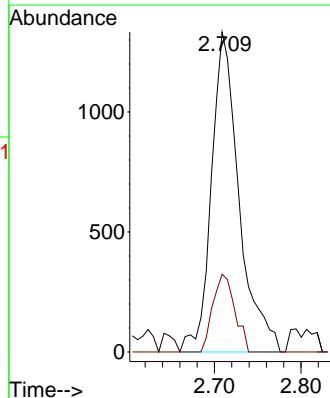
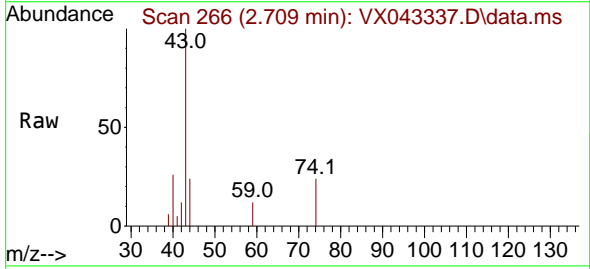


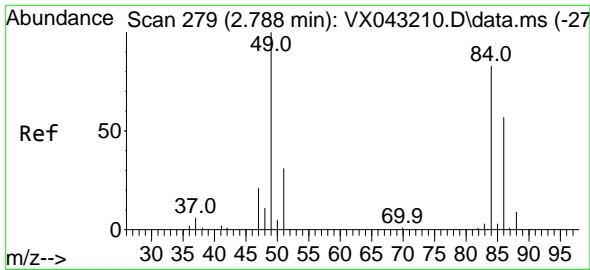
Tgt Ion: 43 Resp: 14877
 Ion Ratio Lower Upper
 43 100
 58 27.7 22.6 33.8



#18
 Methyl Acetate
 Concen: 2.074 ug/l
 RT: 2.709 min Scan# 266
 Delta R.T. -0.000 min
 Lab File: VX043337.D
 Acq: 09 Oct 2024 14:22

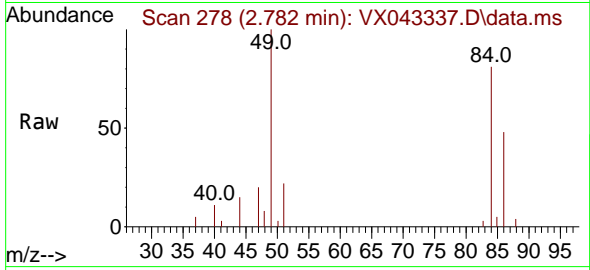
Tgt Ion: 43 Resp: 2959
 Ion Ratio Lower Upper
 43 100
 74 19.2 19.1 28.7





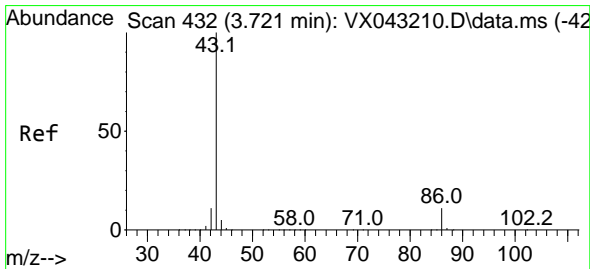
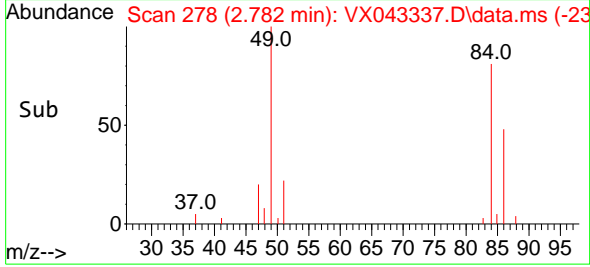
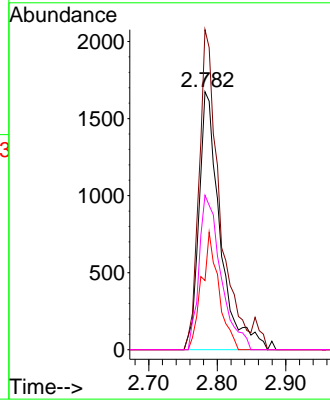
#20
 Methylene Chloride
 Concen: 3.429 ug/l
 RT: 2.782 min Scan# 21
 Delta R.T. -0.006 min
 Lab File: VX043337.D
 Acq: 09 Oct 2024 14:22

Instrument :
 MSVOA_X
 ClientSampleId :



Tgt Ion: 84 Resp: 3596

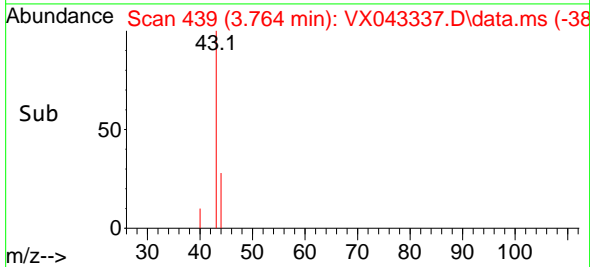
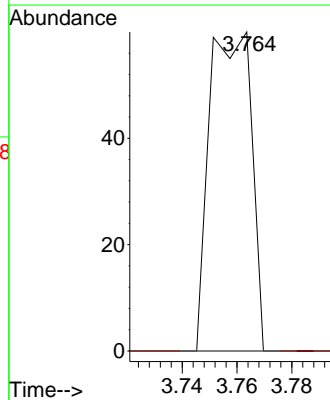
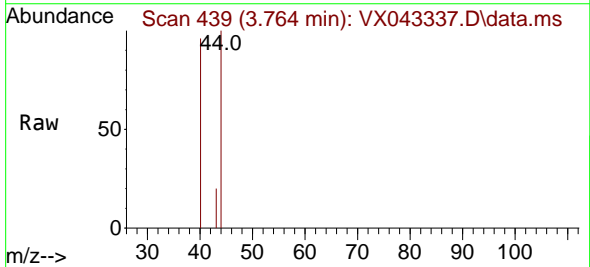
Ion	Ratio	Lower	Upper
84	100		
49	124.1	96.7	145.1
51	26.8	30.4	45.6#
86	59.9	54.7	82.1

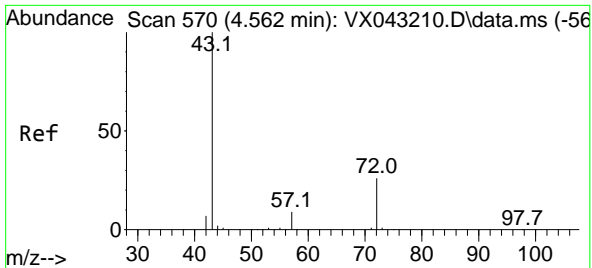


#23
 Vinyl Acetate
 Concen: 6.358 ug/l
 RT: 3.764 min Scan# 439
 Delta R.T. 0.043 min
 Lab File: VX043337.D
 Acq: 09 Oct 2024 14:22

Tgt Ion: 43 Resp: 64

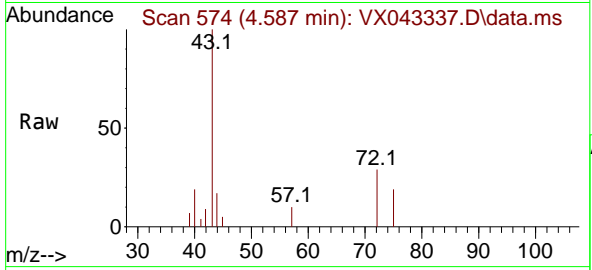
Ion	Ratio	Lower	Upper
43	100		
86	0.0	8.8	13.2#



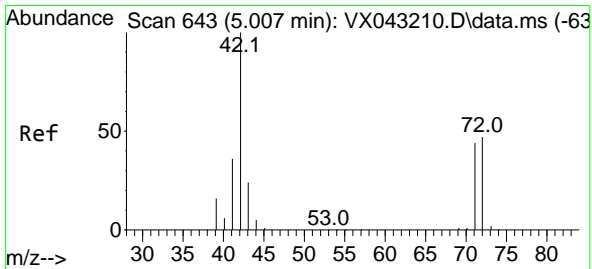
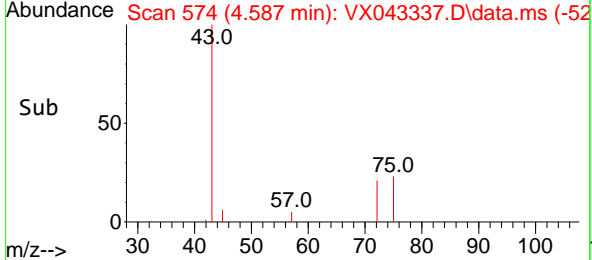
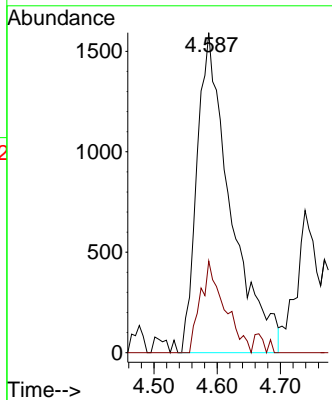


#25
 2-Butanone
 Concen: 7.541 ug/l
 RT: 4.587 min Scan# 51
 Delta R.T. 0.025 min
 Lab File: VX043337.D
 Acq: 09 Oct 2024 14:22

Instrument :
 MSVOA_X
 ClientSampleId :

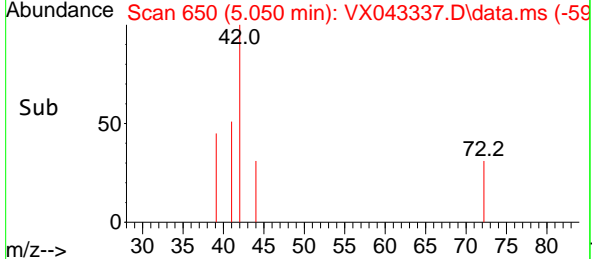
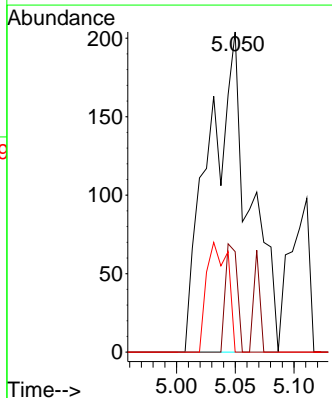
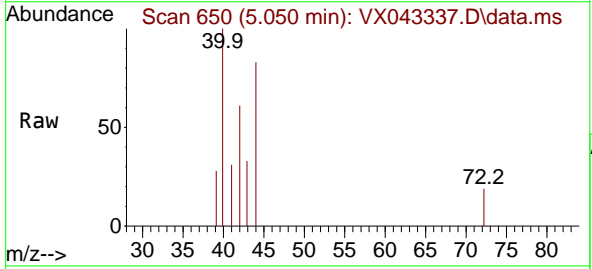


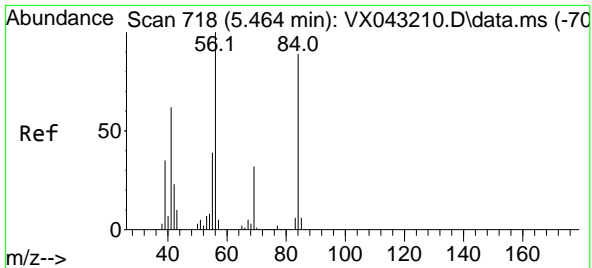
Tgt Ion: 43 Resp: 5880
 Ion Ratio Lower Upper
 43 100
 72 28.6 20.6 31.0



#29
 Tetrahydrofuran
 Concen: 0.990 ug/l
 RT: 5.050 min Scan# 650
 Delta R.T. 0.043 min
 Lab File: VX043337.D
 Acq: 09 Oct 2024 14:22

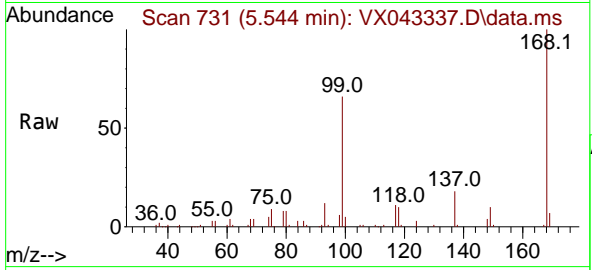
Tgt Ion: 42 Resp: 492
 Ion Ratio Lower Upper
 42 100
 72 10.0 37.7 56.5#
 71 17.9 34.6 52.0#





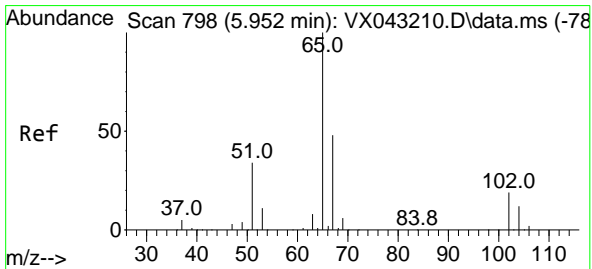
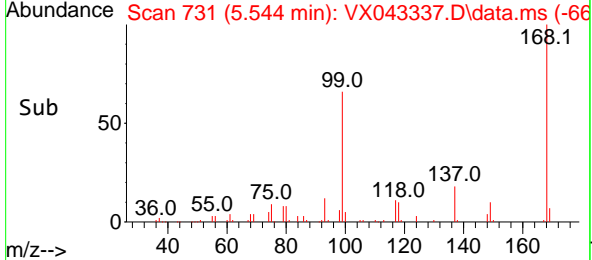
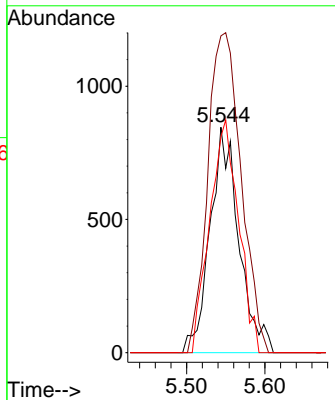
#31
 Cyclohexane
 Concen: 1.472 ug/l
 RT: 5.544 min Scan# 718
 Delta R.T. 0.079 min
 Lab File: VX043337.D
 Acq: 09 Oct 2024 14:22

Instrument :
 MSVOA_X
 ClientSampleId :



Tgt Ion: 56 Resp: 2163

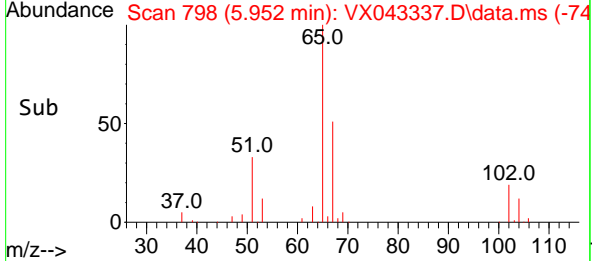
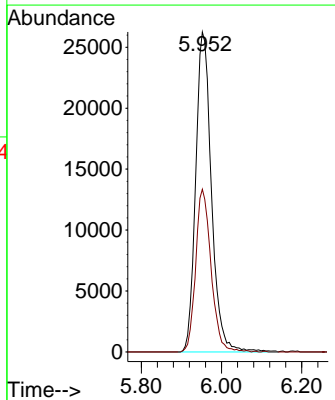
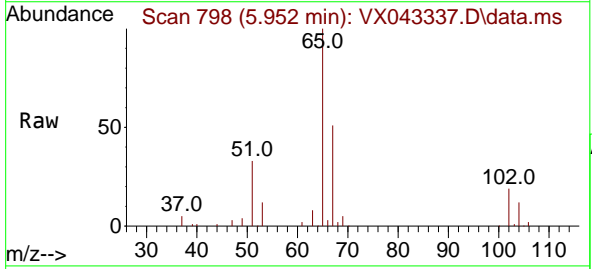
Ion	Ratio	Lower	Upper
56	100		
69	140.5	25.8	38.6#
84	95.7	71.1	106.7

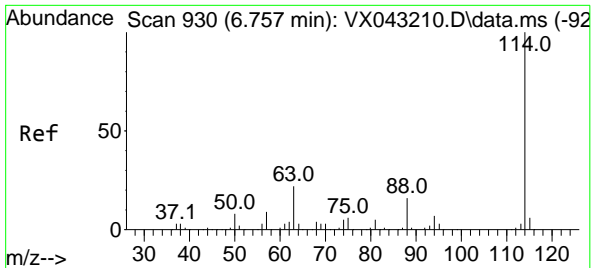


#33
 1,2-Dichloroethane-d4
 Concen: 52.684 ug/l
 RT: 5.952 min Scan# 798
 Delta R.T. 0.000 min
 Lab File: VX043337.D
 Acq: 09 Oct 2024 14:22

Tgt Ion: 65 Resp: 71747

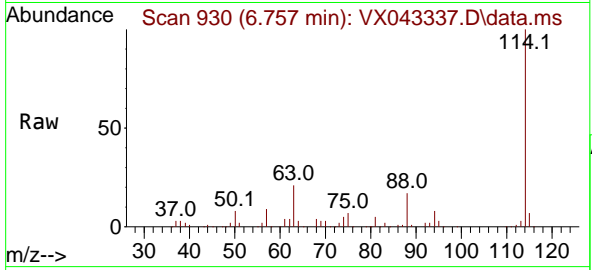
Ion	Ratio	Lower	Upper
65	100		
67	49.7	0.0	99.0





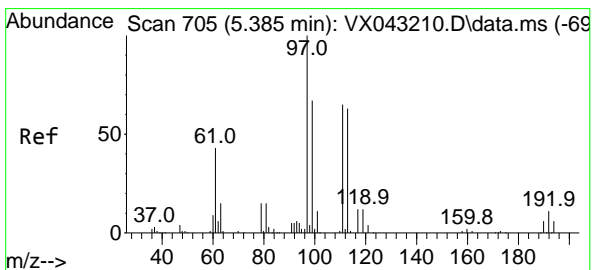
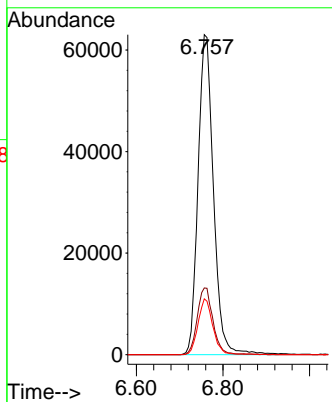
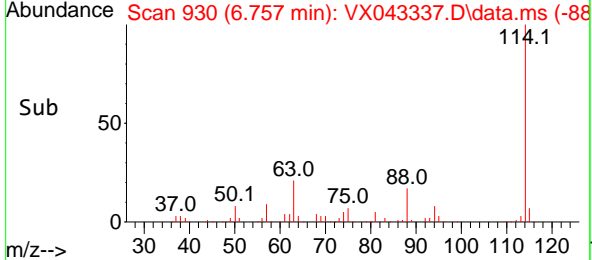
#34
 1,4-Difluorobenzene
 Concen: 50.000 ug/l
 RT: 6.757 min Scan# 91
 Delta R.T. 0.000 min
 Lab File: VX043337.D
 Acq: 09 Oct 2024 14:22

Instrument : MSVOA_X
 ClientSampleId :

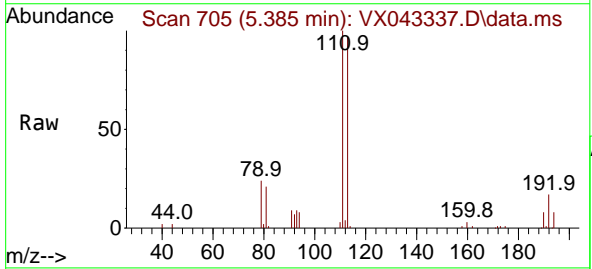


Tgt Ion:114 Resp: 155882

Ion	Ratio	Lower	Upper
114	100		
63	20.8	0.0	43.0
88	17.4	0.0	33.0

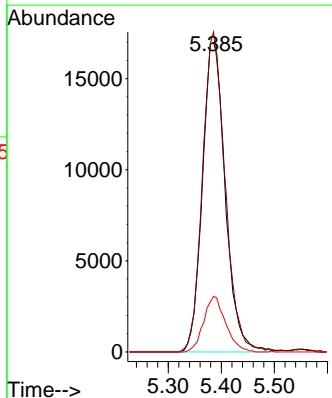
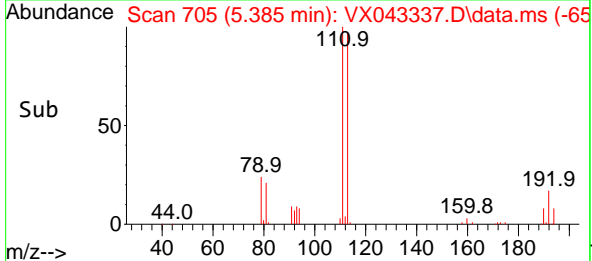


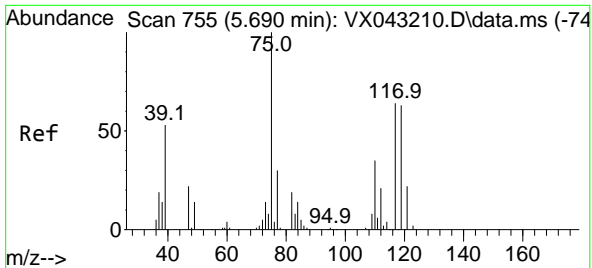
#35
 Dibromofluoromethane
 Concen: 47.430 ug/l
 RT: 5.385 min Scan# 705
 Delta R.T. 0.000 min
 Lab File: VX043337.D
 Acq: 09 Oct 2024 14:22



Tgt Ion:113 Resp: 50988

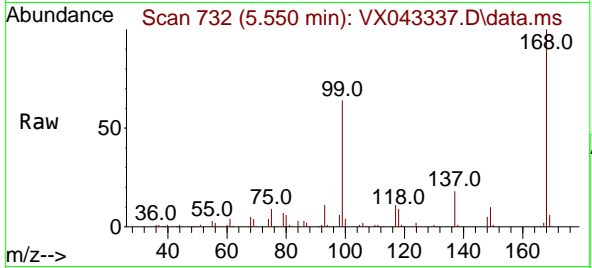
Ion	Ratio	Lower	Upper
113	100		
111	102.1	83.4	125.0
192	17.2	14.1	21.1





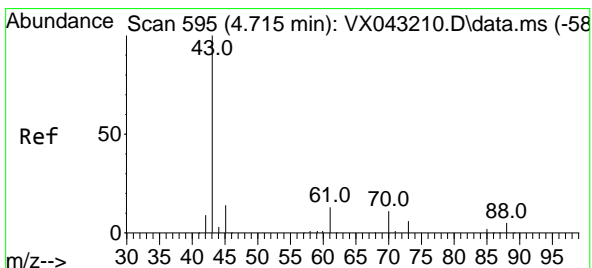
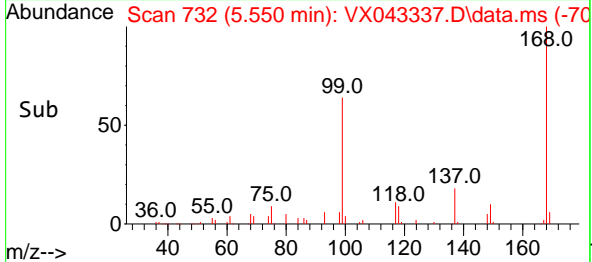
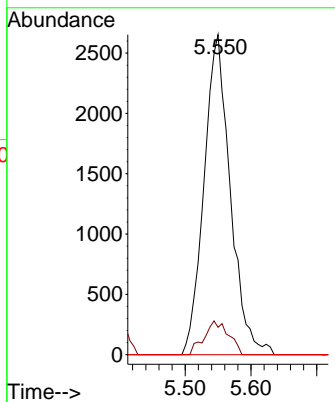
#36
 1,1-Dichloropropene
 Concen: 5.431 ug/l
 RT: 5.550 min Scan# 71
 Delta R.T. -0.140 min
 Lab File: VX043337.D
 Acq: 09 Oct 2024 14:22

Instrument :
 MSVOA_X
 ClientSampleId :



Tgt Ion: 75 Resp: 7376

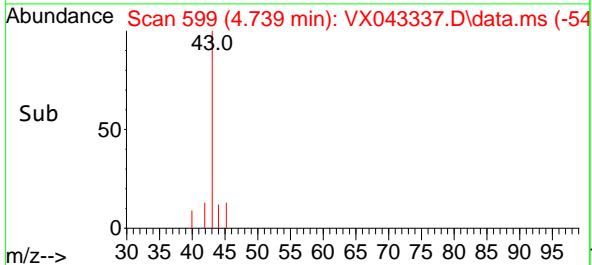
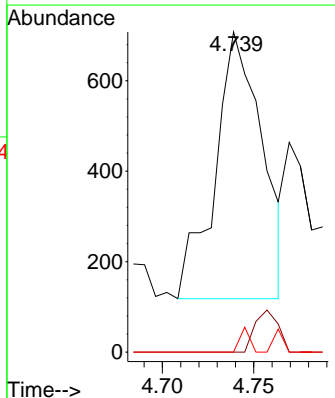
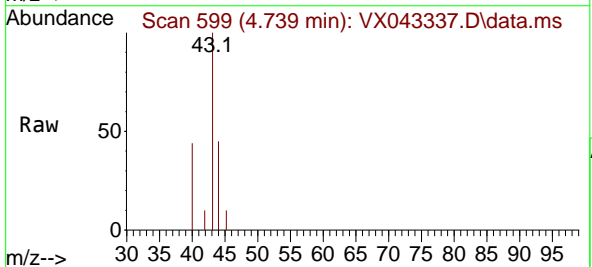
Ion	Ratio	Lower	Upper
75	100		
110	9.8	17.8	53.3#
77	0.0	24.9	37.3#

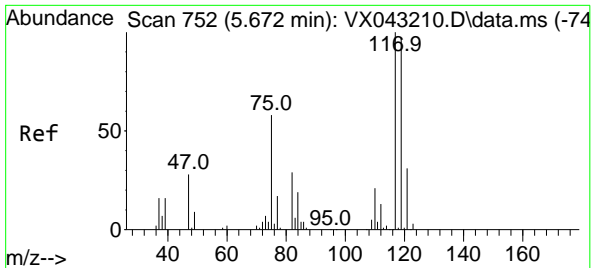


#37
 Ethyl Acetate
 Concen: 0.651 ug/l
 RT: 4.739 min Scan# 599
 Delta R.T. 0.024 min
 Lab File: VX043337.D
 Acq: 09 Oct 2024 14:22

Tgt Ion: 43 Resp: 1061

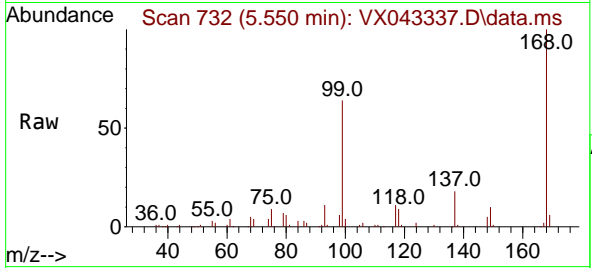
Ion	Ratio	Lower	Upper
43	100		
61	0.0	11.0	16.4#
70	1.9	8.9	13.3#



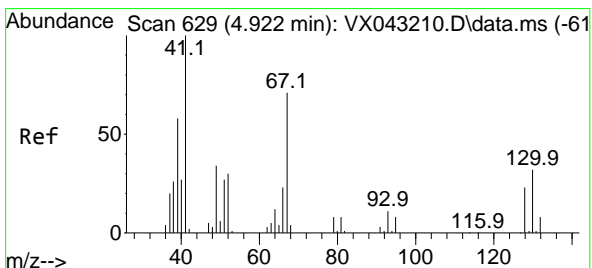
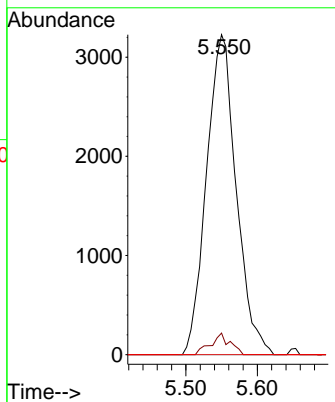
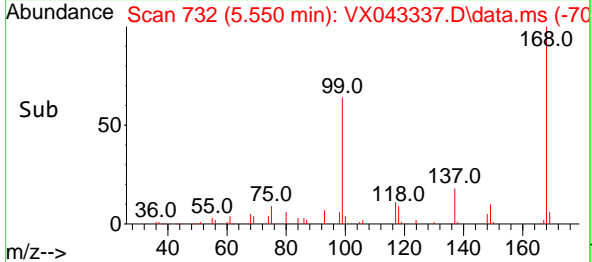


#38
 Carbon Tetrachloride
 Concen: 5.796 ug/l
 RT: 5.550 min Scan# 711
 Delta R.T. -0.122 min
 Lab File: VX043337.D
 Acq: 09 Oct 2024 14:22

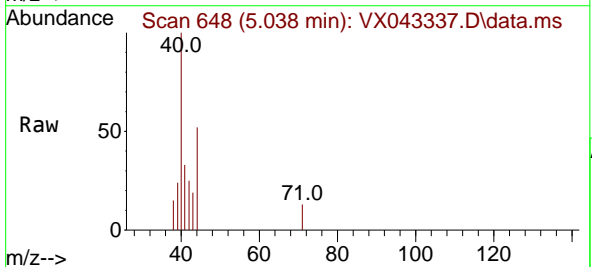
Instrument : MSVOA_X
 ClientSampleId :



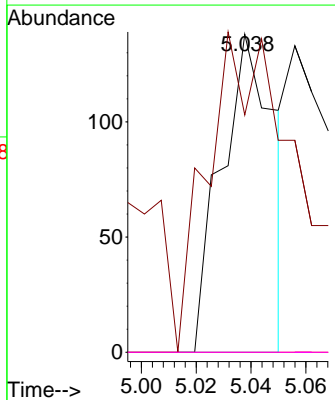
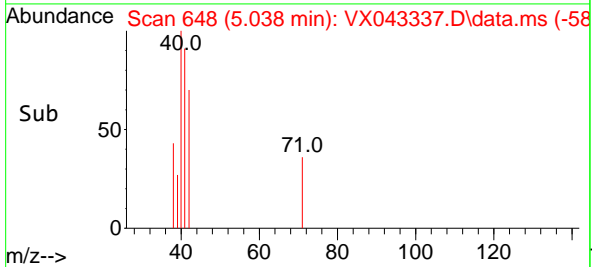
Tgt Ion: 117 Resp: 9319
 Ion Ratio Lower Upper
 117 100
 119 6.8 77.7 116.5#
 121 0.0 24.3 36.5#

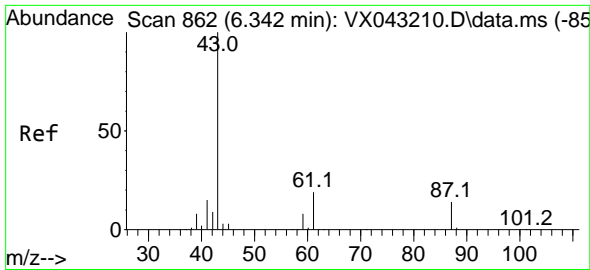


#41
 Methacrylonitrile
 Concen: 0.218 ug/l
 RT: 5.038 min Scan# 648
 Delta R.T. 0.116 min
 Lab File: VX043337.D
 Acq: 09 Oct 2024 14:22



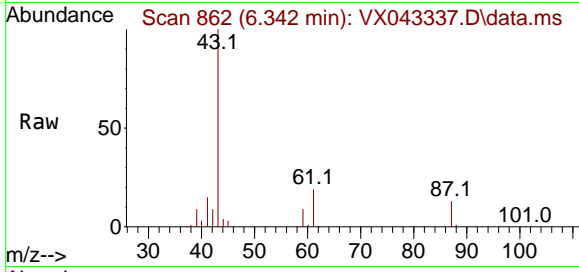
Tgt Ion: 41 Resp: 185
 Ion Ratio Lower Upper
 41 100
 39 151.9 45.0 67.4#
 67 0.0 56.0 84.0#
 52 0.0 25.6 38.4#



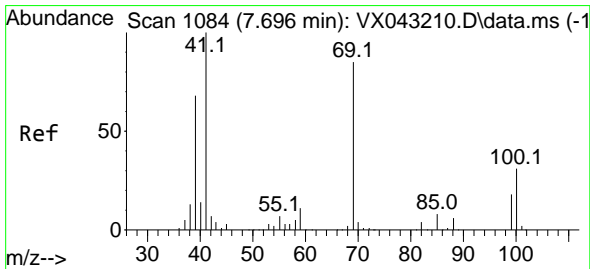
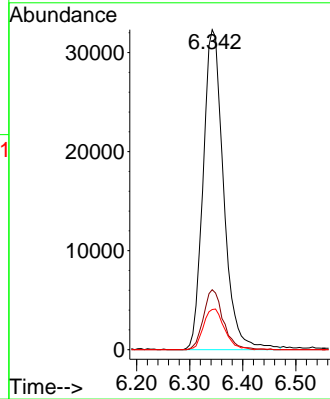
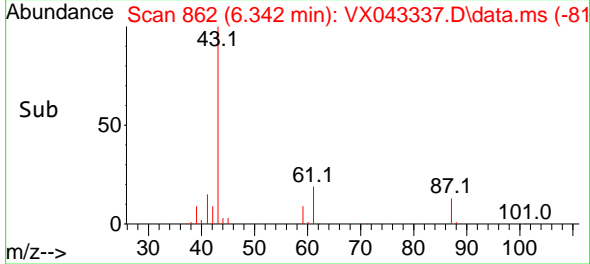


#43
 Isopropyl Acetate
 Concen: 32.098 ug/l
 RT: 6.342 min Scan# 80
 Delta R.T. 0.000 min
 Lab File: VX043337.D
 Acq: 09 Oct 2024 14:22

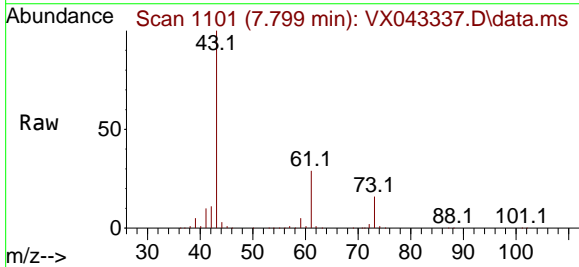
Instrument :
 MSVOA_X
 ClientSampleId :



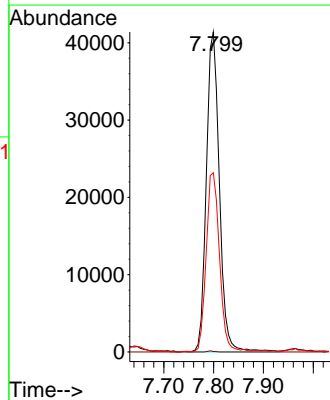
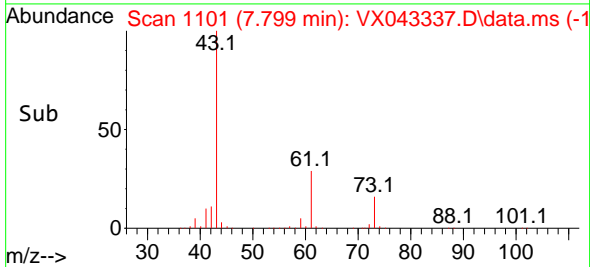
Tgt Ion: 43 Resp: 86466
 Ion Ratio Lower Upper
 43 100
 61 18.1 15.1 22.7
 87 13.1 10.8 16.2

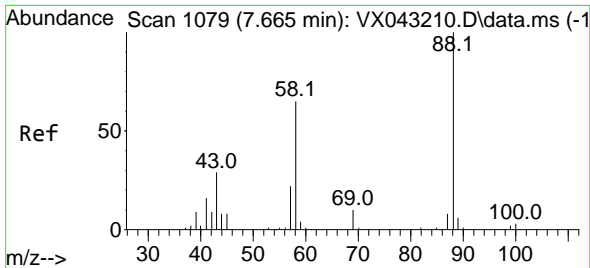


#48
 Methyl methacrylate
 Concen: 56.891 ug/l
 RT: 7.799 min Scan# 1101
 Delta R.T. 0.104 min
 Lab File: VX043337.D
 Acq: 09 Oct 2024 14:22



Tgt Ion: 41 Resp: 75196
 Ion Ratio Lower Upper
 41 100
 69 0.2 64.1 96.1#
 39 57.4 52.8 79.2

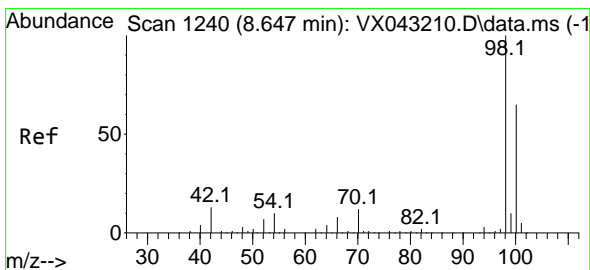
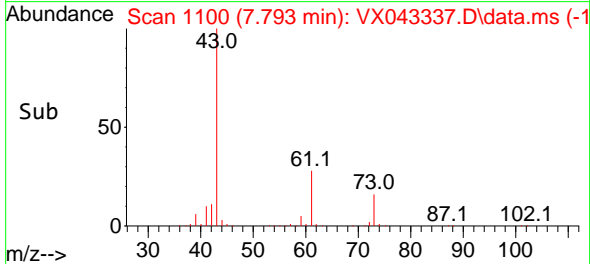
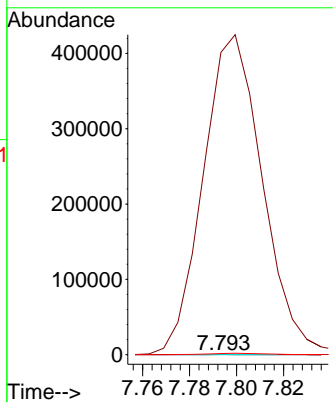
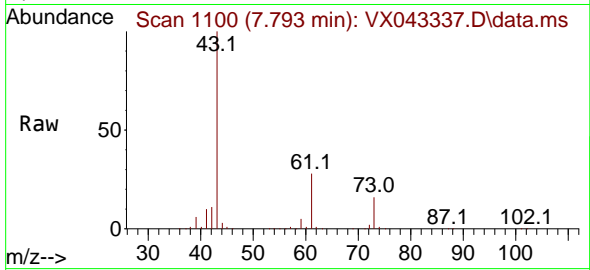




#49
 1,4-Dioxane
 Concen: 4.943 ug/l
 RT: 7.793 min Scan# 1100
 Delta R.T. 0.128 min
 Lab File: VX043337.D
 Acq: 09 Oct 2024 14:22

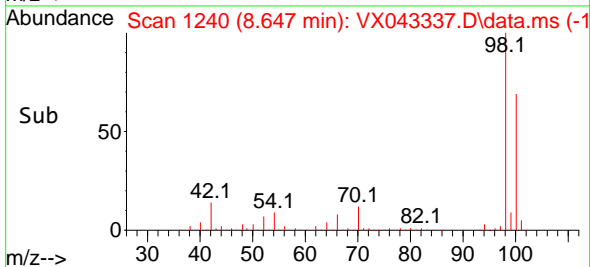
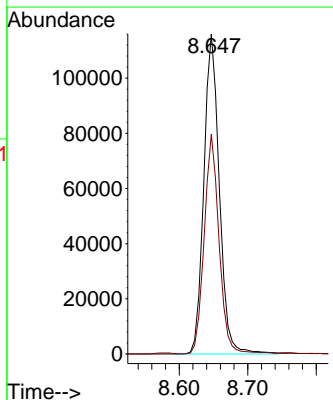
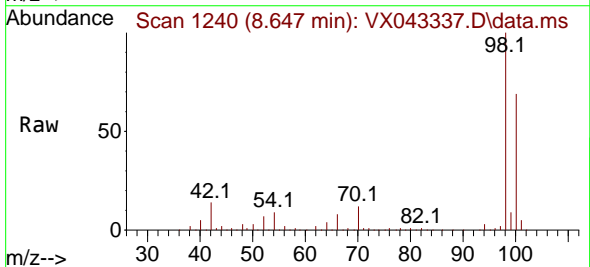
Instrument :
 MSVOA_X
 ClientSampleId :

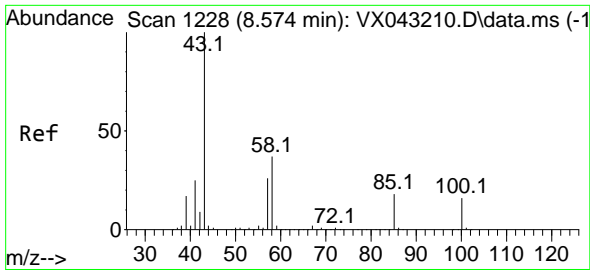
Tgt Ion: 88 Resp: 127
 Ion Ratio Lower Upper
 88 100
 43 595343.3 29.5 44.3#
 58 2518.1 55.2 82.8#



#50
 Toluene-d8
 Concen: 49.071 ug/l
 RT: 8.647 min Scan# 1240
 Delta R.T. 0.000 min
 Lab File: VX043337.D
 Acq: 09 Oct 2024 14:22

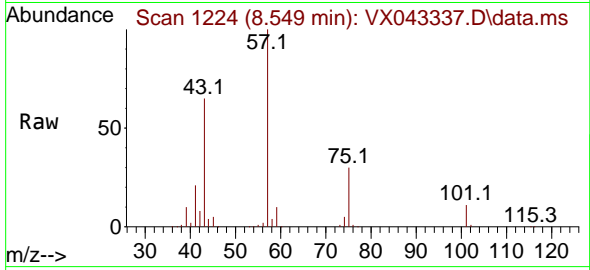
Tgt Ion: 98 Resp: 182812
 Ion Ratio Lower Upper
 98 100
 100 66.1 52.4 78.6



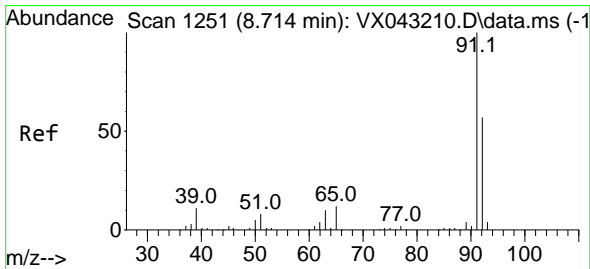
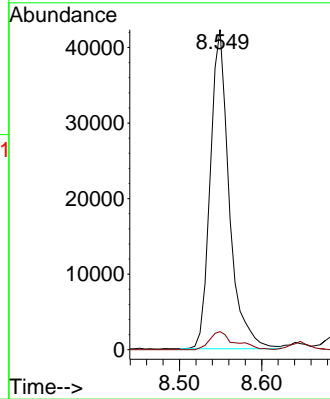
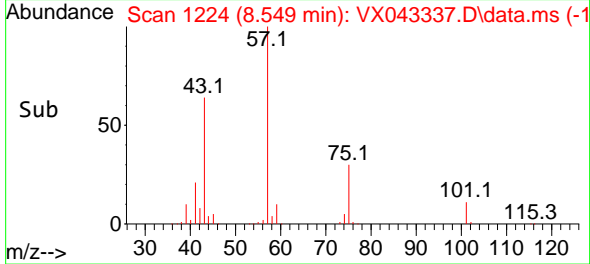


#51
 4-Methyl-2-Pentanone
 Concen: 41.346 ug/l
 RT: 8.549 min Scan# 11
 Delta R.T. -0.024 min
 Lab File: VX043337.D
 Acq: 09 Oct 2024 14:22

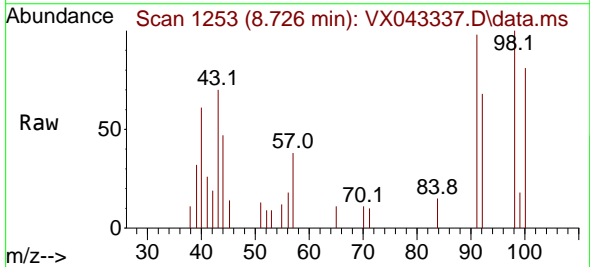
Instrument :
 MSVOA_X
 ClientSampleId :



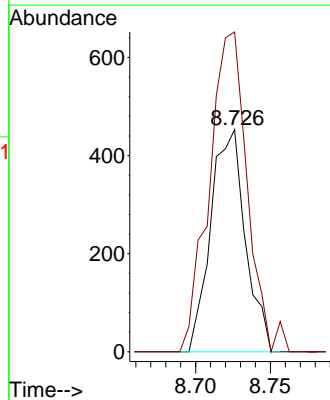
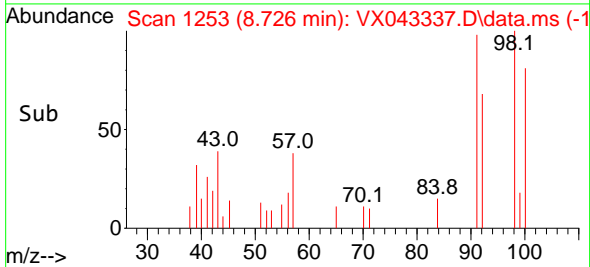
Tgt Ion: 43 Resp: 67646
 Ion Ratio Lower Upper
 43 100
 58 7.4 30.0 45.0#

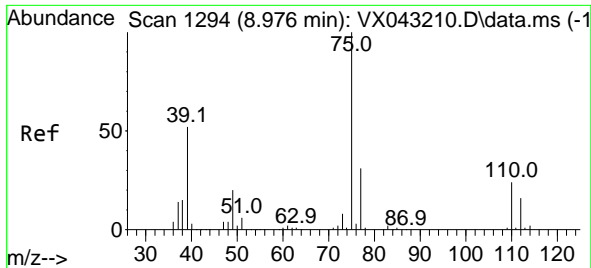


#52
 Toluene
 Concen: 0.282 ug/l
 RT: 8.726 min Scan# 1253
 Delta R.T. 0.012 min
 Lab File: VX043337.D
 Acq: 09 Oct 2024 14:22



Tgt Ion: 92 Resp: 727
 Ion Ratio Lower Upper
 92 100
 91 159.3 137.0 205.4

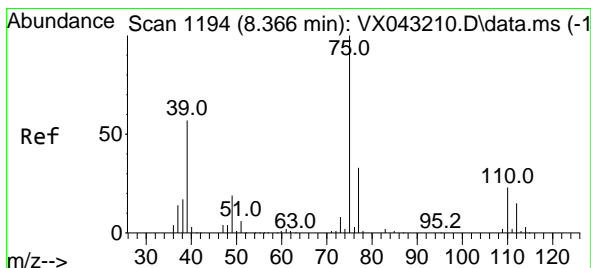
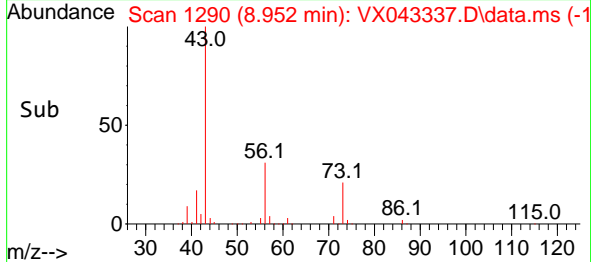
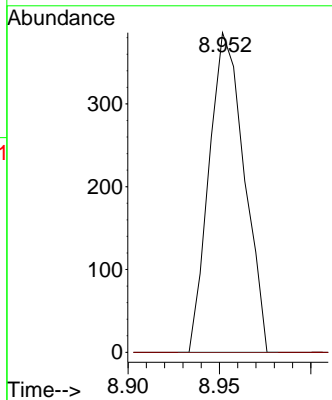
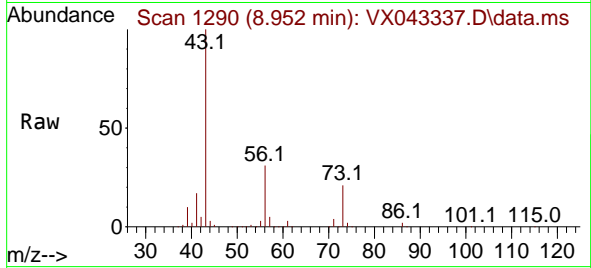




#53
 t-1,3-Dichloropropene
 Concen: 0.327 ug/l
 RT: 8.952 min Scan# 1124
 Delta R.T. -0.024 min
 Lab File: VX043337.D
 Acq: 09 Oct 2024 14:22

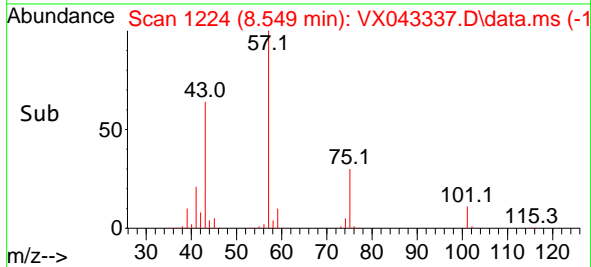
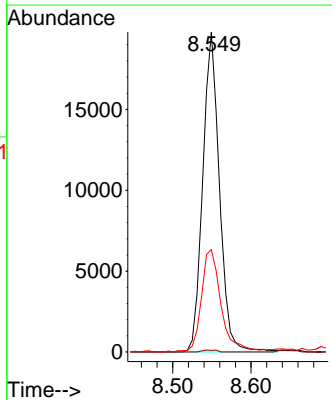
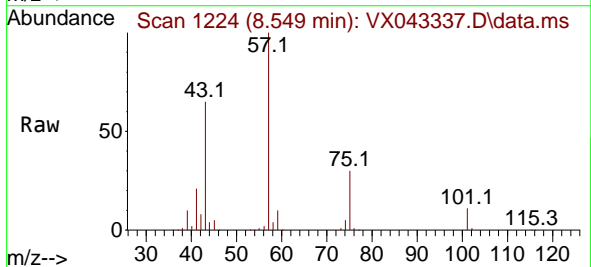
Instrument : MSVOA_X
 ClientSampleId :

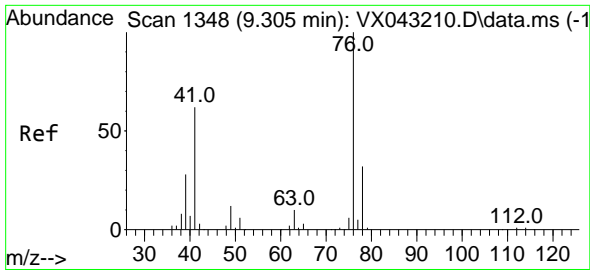
Tgt Ion: 75 Resp: 517
 Ion Ratio Lower Upper
 75 100
 77 0.0 25.1 37.7#



#54
 cis-1,3-Dichloropropene
 Concen: 17.226 ug/l
 RT: 8.549 min Scan# 1224
 Delta R.T. 0.183 min
 Lab File: VX043337.D
 Acq: 09 Oct 2024 14:22

Tgt Ion: 75 Resp: 29227
 Ion Ratio Lower Upper
 75 100
 77 0.5 26.0 39.0#
 39 31.6 45.8 68.8#

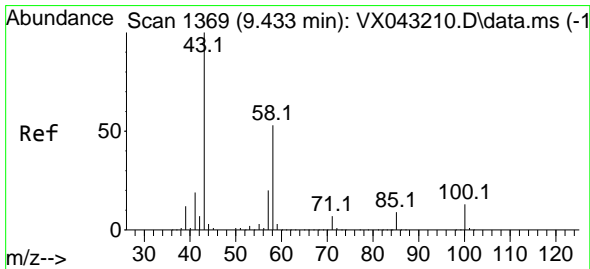
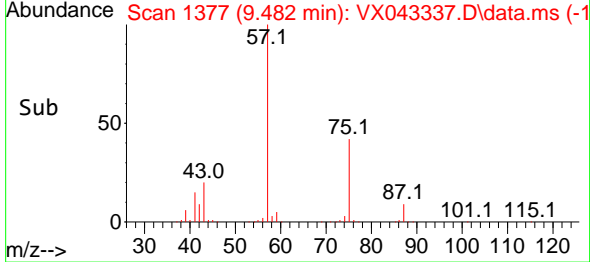
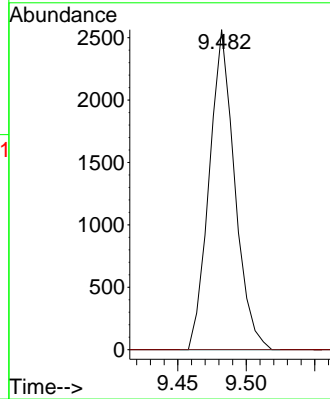
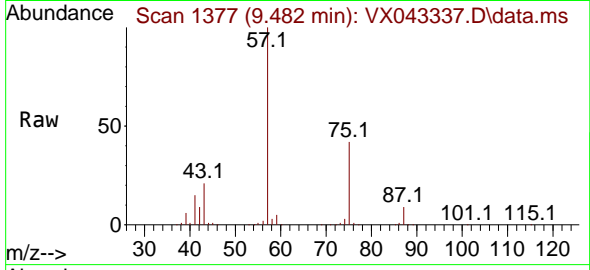




#57
 1,3-Dichloropropane
 Concen: 1.898 ug/l
 RT: 9.482 min Scan# 1377
 Delta R.T. 0.177 min
 Lab File: VX043337.D
 Acq: 09 Oct 2024 14:22

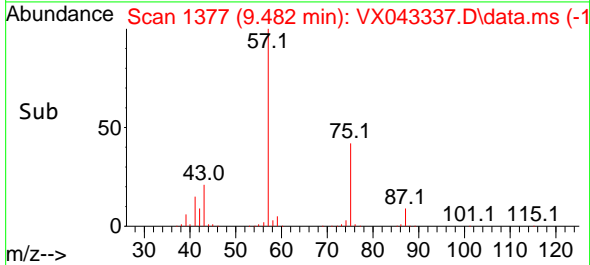
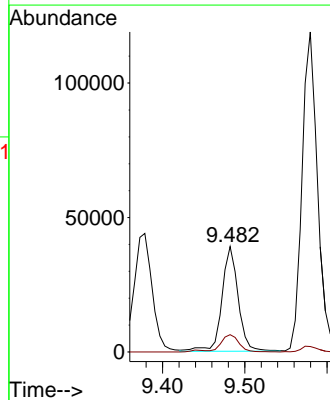
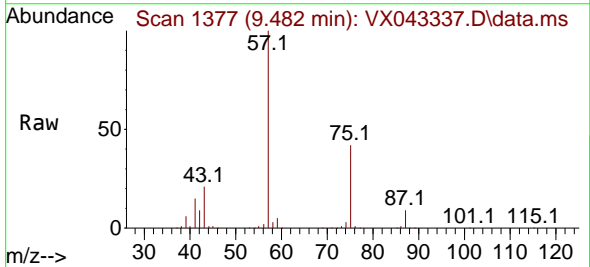
Instrument :
 MSVOA_X
 ClientSampleId :

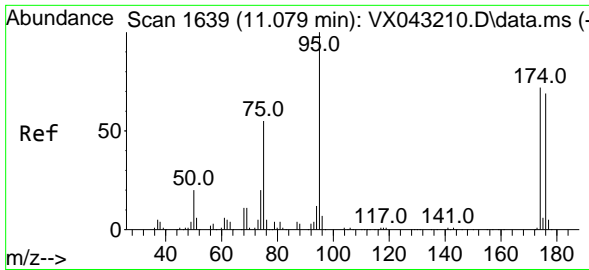
Tgt Ion: 76 Resp: 3316
 Ion Ratio Lower Upper
 76 100
 78 0.0 25.7 38.5#



#59
 2-Hexanone
 Concen: 43.462 ug/l
 RT: 9.482 min Scan# 1377
 Delta R.T. 0.049 min
 Lab File: VX043337.D
 Acq: 09 Oct 2024 14:22

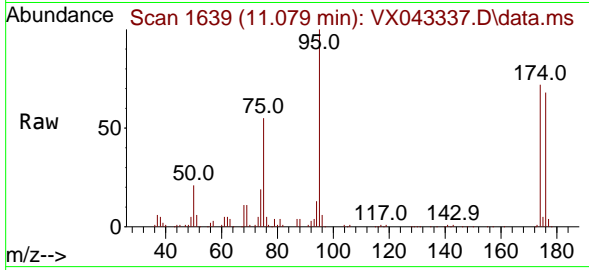
Tgt Ion: 43 Resp: 53773
 Ion Ratio Lower Upper
 43 100
 58 17.7 26.1 78.3#



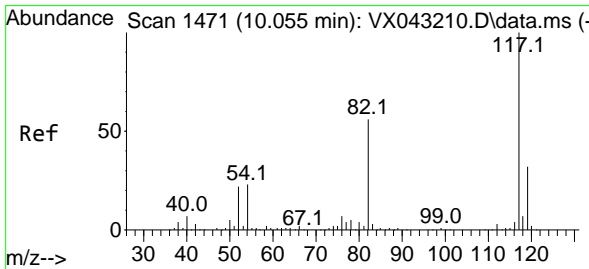
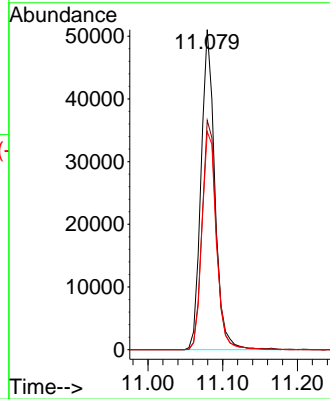
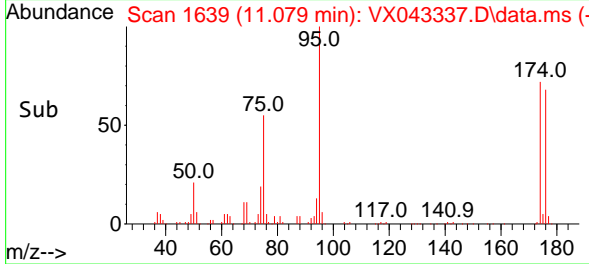


#62
 4-Bromofluorobenzene
 Concen: 48.327 ug/l
 RT: 11.079 min Scan# 1639
 Delta R.T. 0.000 min
 Lab File: VX043337.D
 Acq: 09 Oct 2024 14:22

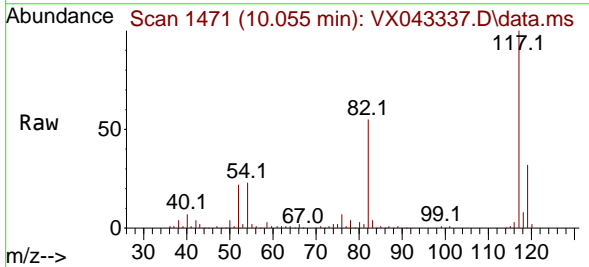
Instrument : MSVOA_X
 ClientSampleId :



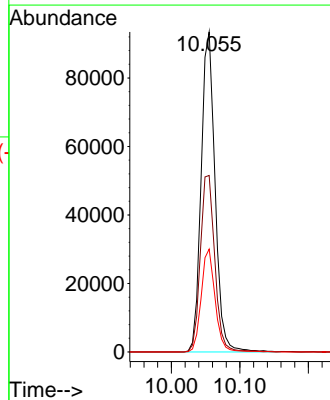
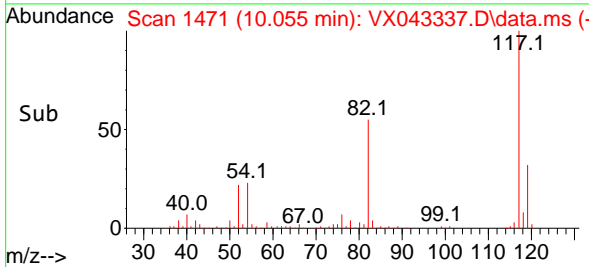
Tgt Ion: 95 Resp: 65407
 Ion Ratio Lower Upper
 95 100
 174 74.2 0.0 145.0
 176 71.4 0.0 143.0

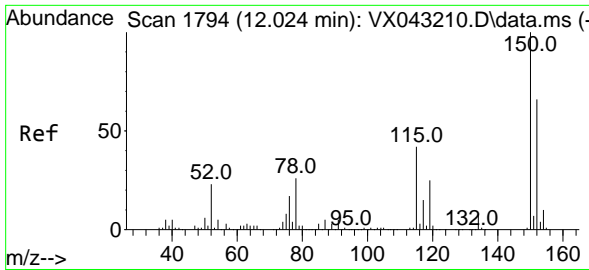


#63
 Chlorobenzene-d5
 Concen: 50.000 ug/l
 RT: 10.055 min Scan# 1471
 Delta R.T. 0.000 min
 Lab File: VX043337.D
 Acq: 09 Oct 2024 14:22



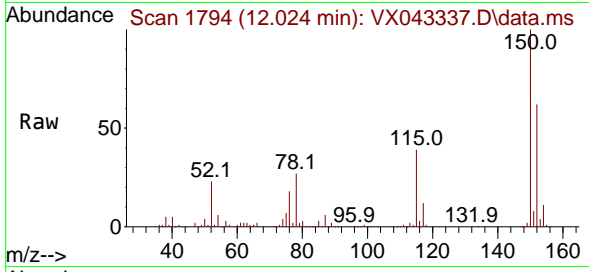
Tgt Ion: 117 Resp: 132559
 Ion Ratio Lower Upper
 117 100
 82 55.1 45.0 67.6
 119 32.2 25.3 37.9



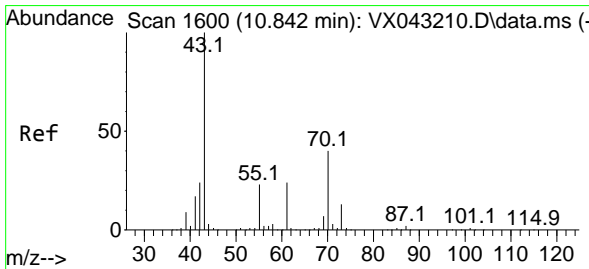
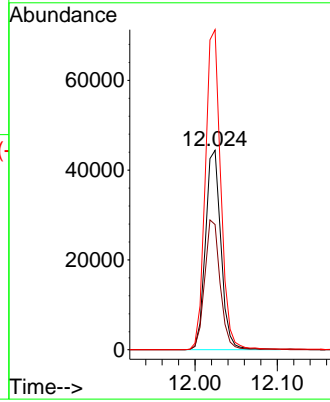
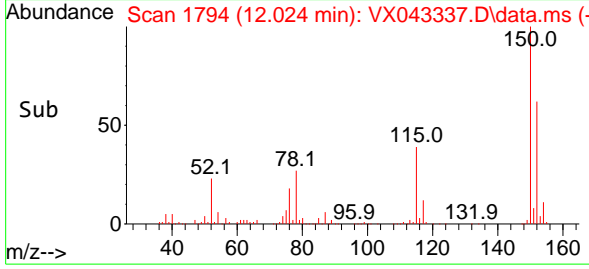


#72
 1,4-Dichlorobenzene-d4
 Concen: 50.000 ug/l
 RT: 12.024 min Scan# 1
 Delta R.T. 0.000 min
 Lab File: VX043337.D
 Acq: 09 Oct 2024 14:22

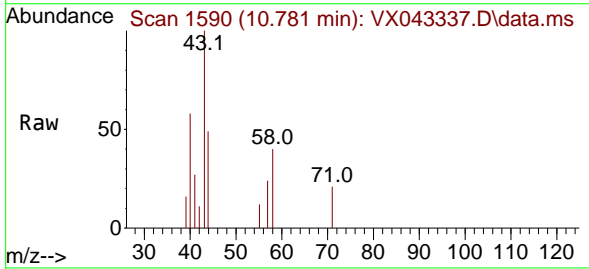
Instrument :
 MSVOA_X
 ClientSampleId :



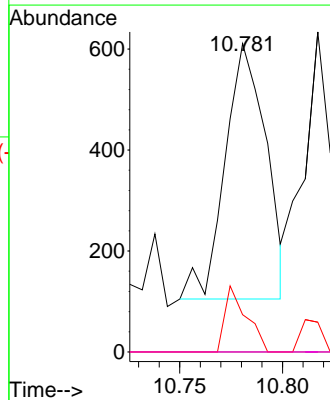
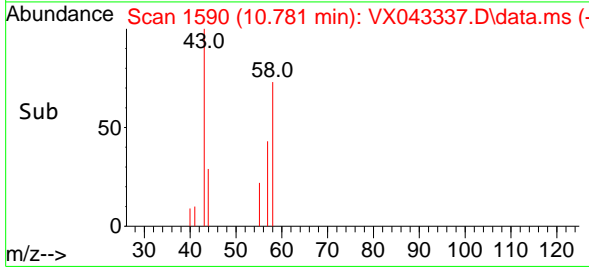
Tgt Ion:152 Resp: 58033
 Ion Ratio Lower Upper
 152 100
 115 65.2 44.1 132.3
 150 160.4 0.0 347.4

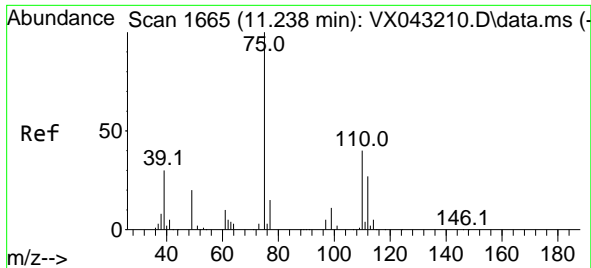


#74
 N-amy1 acetate
 Concen: 0.328 ug/l
 RT: 10.781 min Scan# 1590
 Delta R.T. -0.061 min
 Lab File: VX043337.D
 Acq: 09 Oct 2024 14:22



Tgt Ion: 43 Resp: 703
 Ion Ratio Lower Upper
 43 100
 70 0.0 33.1 49.7#
 55 13.5 18.6 27.8#
 61 0.0 18.7 28.1#

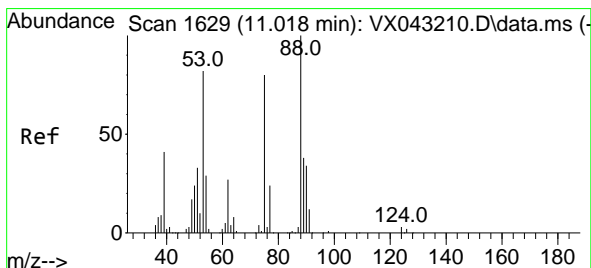
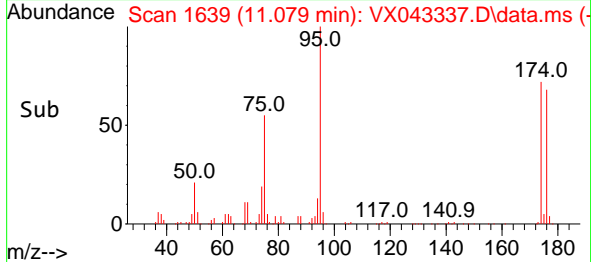
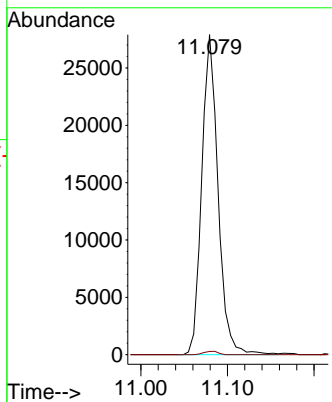
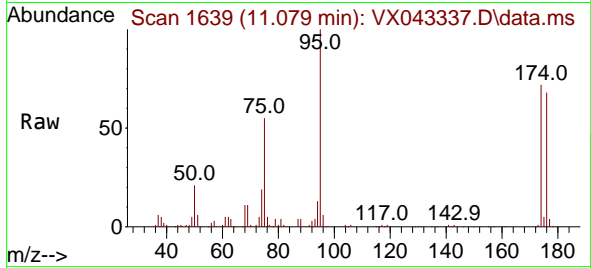




#76
 1,2,3-Trichloropropane
 Concen: 28.324 ug/l
 RT: 11.079 min Scan# 1639
 Delta R.T. -0.159 min
 Lab File: VX043337.D
 Acq: 09 Oct 2024 14:22

Instrument : MSVOA_X
 ClientSampleId :

Tgt Ion: 75 Resp: 36460
 Ion Ratio Lower Upper
 75 100
 77 0.9 22.0 66.0#



#81
 trans-1,4-Dichloro-2-butene
 Concen: 73.407 ug/l
 RT: 11.079 min Scan# 1639
 Delta R.T. 0.061 min
 Lab File: VX043337.D
 Acq: 09 Oct 2024 14:22

Tgt Ion: 75 Resp: 36460
 Ion Ratio Lower Upper
 75 100
 53 0.0 83.9 125.9#
 89 0.0 38.6 58.0#

