

Data Path : Z:\voasrv\HPCHEM1\MSVOA\_X\Data\VX100925\  
 Data File : VX048081.D  
 Acq On : 09 Oct 2025 13:19  
 Operator : JC/MD  
 Sample : Q3311-01  
 Misc : 5.0mL/MSVOA\_X/WATER  
 ALS Vial : 11 Sample Multiplier: 1

Instrument :  
 MSVOA\_X  
 ClientSampleId :  
 MW-218

Quant Time: Oct 10 01:22:47 2025  
 Quant Method : Z:\voasrv\HPCHEM1\MSVOA\_X\Method\82X091625W.M  
 Quant Title : SW846 8260  
 QLast Update : Wed Sep 17 06:39:58 2025  
 Response via : Initial Calibration

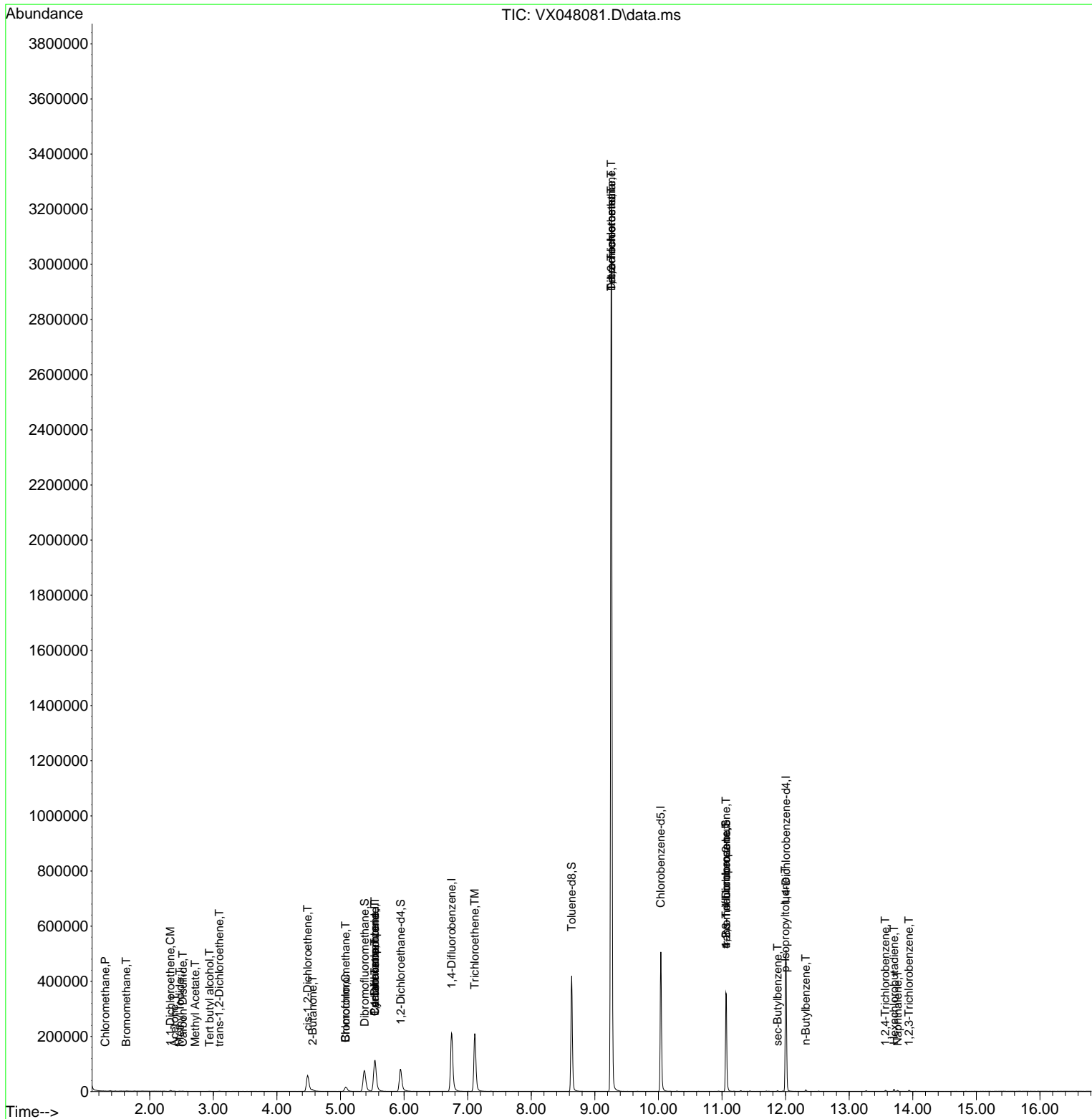
Compound	R.T.	QIon	Response	Conc	Units	Dev(Min)
Internal Standards						
1) Pentafluorobenzene	5.538	168	112297	50.000	ug/l	0.00
34) 1,4-Difluorobenzene	6.745	114	231304	50.000	ug/l	0.00
63) Chlorobenzene-d5	10.037	117	229611	50.000	ug/l	0.00
72) 1,4-Dichlorobenzene-d4	12.006	152	109726	50.000	ug/l	0.00
System Monitoring Compounds						
33) 1,2-Dichloroethane-d4	5.946	65	89211	49.909	ug/l	0.00
Spiked Amount	50.000	Range	78 - 117	Recovery	=	99.820%
35) Dibromofluoromethane	5.379	113	75189	48.470	ug/l	0.00
Spiked Amount	50.000	Range	75 - 124	Recovery	=	96.940%
50) Toluene-d8	8.635	98	258033	48.072	ug/l	0.00
Spiked Amount	50.000	Range	92 - 112	Recovery	=	96.140%
62) 4-Bromofluorobenzene	11.061	95	105541	51.809	ug/l	0.00
Spiked Amount	50.000	Range	83 - 123	Recovery	=	103.620%
Target Compounds						
					Qvalue	
3) Chloromethane	1.301	50	439	0.287	ug/l #	87
5) Bromomethane	1.630	94	375	0.395	ug/l #	74
10) Methyl Iodide	2.477	142	1166	0.576	ug/l #	77
11) Tert butyl alcohol	2.941	59	445	2.235	ug/l #	72
12) 1,1-Dichloroethene	2.325	96	1260	0.944	ug/l #	64
16) Acetone	2.386	43	1657	2.132	ug/l #	81
17) Carbon Disulfide	2.520	76	861	0.236	ug/l #	76
18) Methyl Acetate	2.715	43	502	0.290	ug/l #	54
21) trans-1,2-Dichloroethene	3.093	96	373	0.260	ug/l	92
25) 2-Butanone	4.562	43	7540	7.777	ug/l	96
27) cis-1,2-Dichloroethene	4.483	96	40949	23.278	ug/l	89
28) Bromochloromethane	5.080	49	1773	1.432	ug/l #	15
30) Chloroform	5.080	83	21015	7.333	ug/l	96
31) Cyclohexane	5.538	56	2814	1.191	ug/l #	6
36) 1,1-Dichloropropene	5.538	75	9960	4.394	ug/l #	50
38) Carbon Tetrachloride	5.544	117	12419	5.043	ug/l #	18
44) Trichloroethene	7.111	130	86834	52.169	ug/l	94
55) 1,1,2-Trichloroethane	9.257	97	6008	3.673	ug/l #	2
60) Dibromochloromethane	9.257	129	607782	322.512	ug/l #	11
64) Tetrachloroethene	9.257	164	608834	406.751	ug/l	100
76) 1,2,3-Trichloropropane	11.061	75	55596	25.025	ug/l #	39
81) trans-1,4-Dichloro-2-b...	11.061	75	55596	63.818	ug/l #	8
85) sec-Butylbenzene	11.872	105	1683	0.202	ug/l #	64
86) p-Isopropyltoluene	11.994	119	1442	0.204	ug/l #	76
89) n-Butylbenzene	12.317	91	2239	0.343	ug/l	98
93) 1,2,4-Trichlorobenzene	13.567	180	1118	0.473	ug/l	95
94) Hexachlorobutadiene	13.707	225	1006	1.253	ug/l	88
95) Naphthalene	13.762	128	2646	0.368	ug/l	98
96) 1,2,3-Trichlorobenzene	13.939	180	1200	0.546	ug/l	86

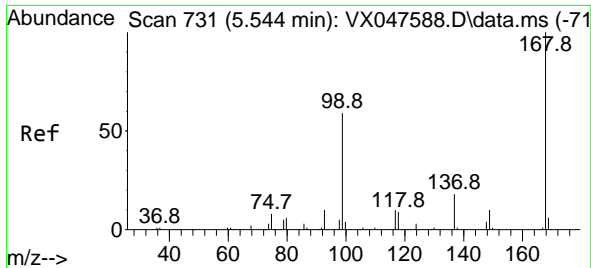
(#) = qualifier out of range (m) = manual integration (+) = signals summed

Data Path : Z:\voasrv\HPCHEM1\MSVOA\_X\Data\VX100925\  
 Data File : VX048081.D  
 Acq On : 09 Oct 2025 13:19  
 Operator : JC/MD  
 Sample : Q3311-01  
 Misc : 5.0mL/MSVOA\_X/WATER  
 ALS Vial : 11 Sample Multiplier: 1

Instrument :  
 MSVOA\_X  
 ClientSampleId :  
 MW-218

Quant Time: Oct 10 01:22:47 2025  
 Quant Method : Z:\voasrv\HPCHEM1\MSVOA\_X\Method\82X091625W.M  
 Quant Title : SW846 8260  
 QLast Update : Wed Sep 17 06:39:58 2025  
 Response via : Initial Calibration

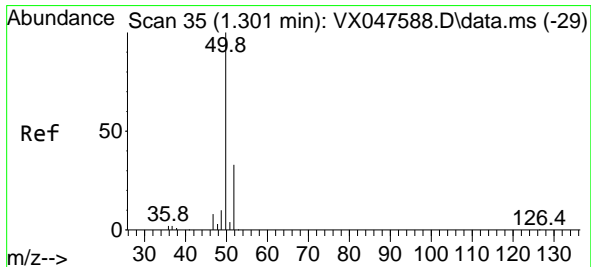
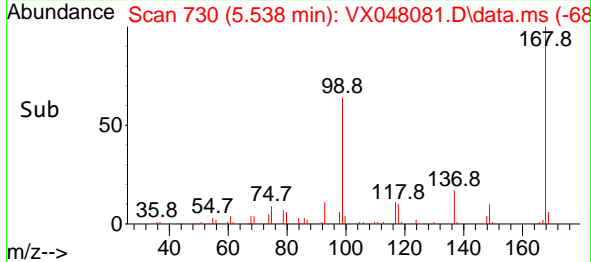
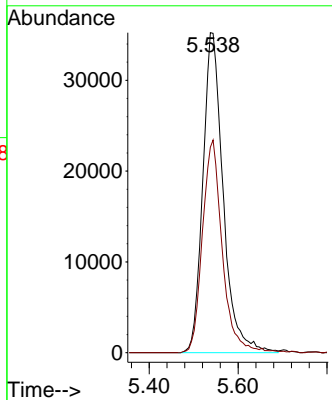
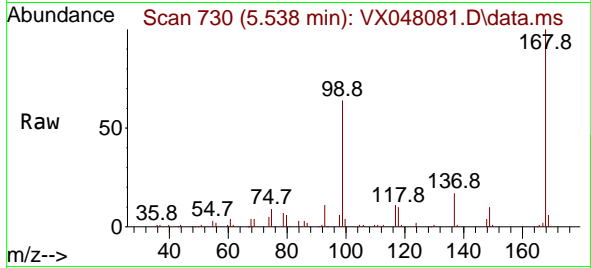




#1  
 Pentafluorobenzene  
 Concen: 50.000 ug/l  
 RT: 5.538 min Scan# 71  
 Delta R.T. -0.006 min  
 Lab File: VX048081.D  
 Acq: 09 Oct 2025 13:19

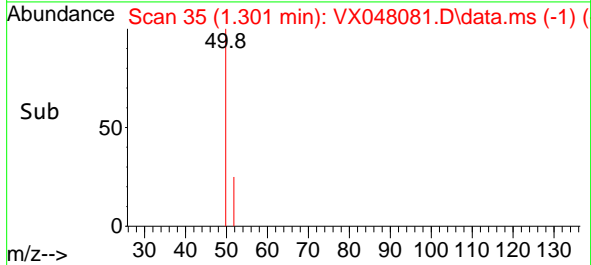
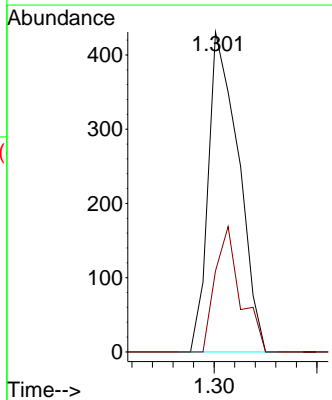
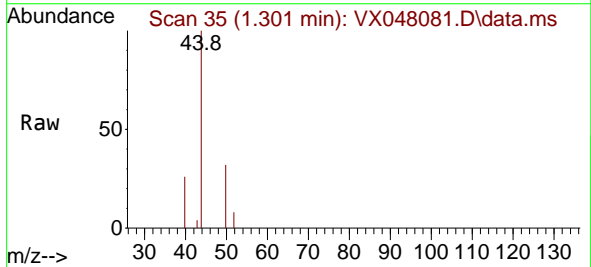
Instrument :  
 MSVOA\_X  
 ClientSampleId :  
 MW-218

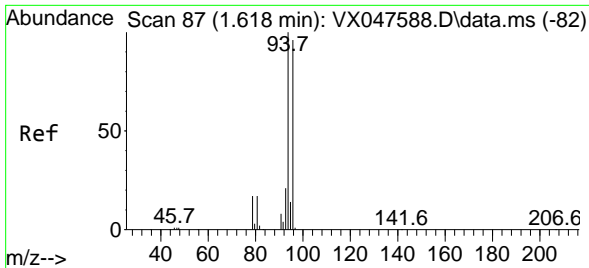
Tgt Ion:168 Resp: 112297  
 Ion Ratio Lower Upper  
 168 100  
 99 64.2 48.8 73.2



#3  
 Chloromethane  
 Concen: 0.287 ug/l  
 RT: 1.301 min Scan# 35  
 Delta R.T. 0.000 min  
 Lab File: VX048081.D  
 Acq: 09 Oct 2025 13:19

Tgt Ion: 50 Resp: 439  
 Ion Ratio Lower Upper  
 50 100  
 52 25.3 26.1 39.1#

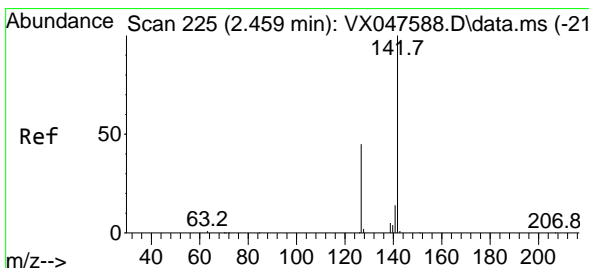
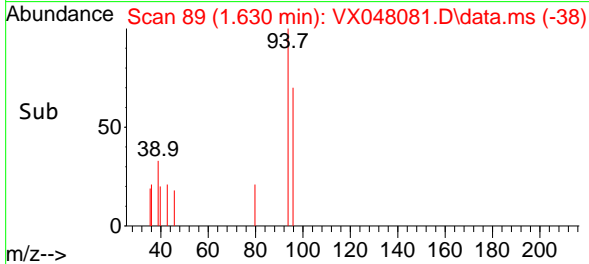
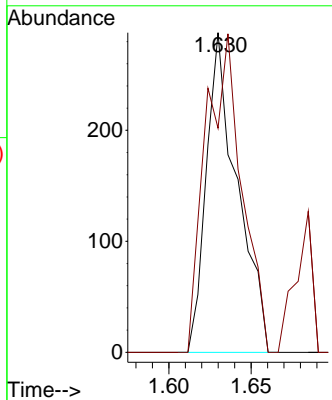
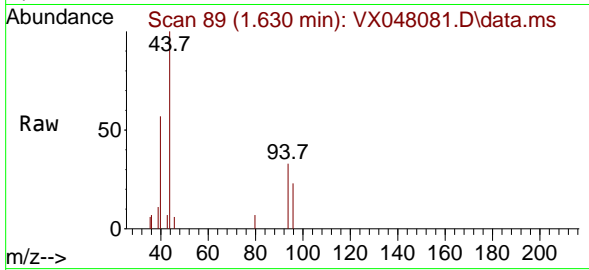




#5  
 Bromomethane  
 Concen: 0.395 ug/l  
 RT: 1.630 min Scan# 89  
 Delta R.T. 0.012 min  
 Lab File: VX048081.D  
 Acq: 09 Oct 2025 13:19

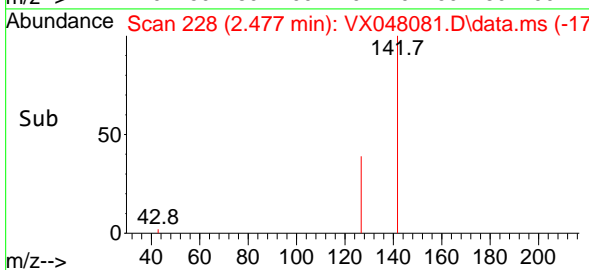
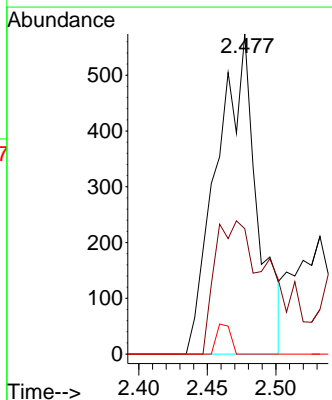
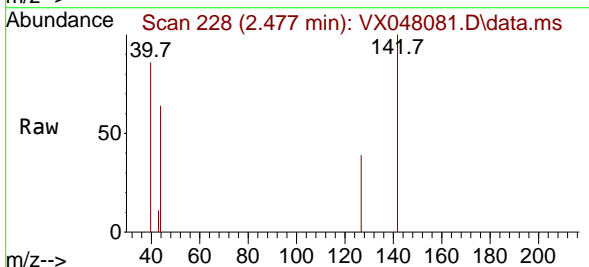
Instrument : MSVOA\_X  
 ClientSampleId : MW-218

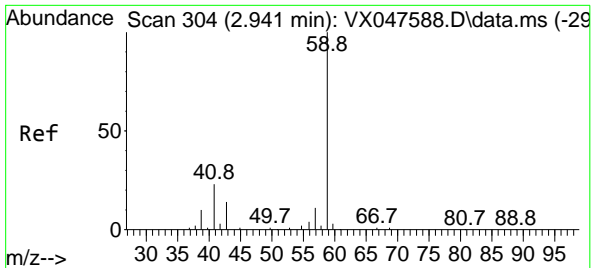
Tgt Ion: 94 Resp: 375  
 Ion Ratio Lower Upper  
 94 100  
 96 70.1 76.6 115.0#



#10  
 Methyl Iodide  
 Concen: 0.576 ug/l  
 RT: 2.477 min Scan# 228  
 Delta R.T. 0.018 min  
 Lab File: VX048081.D  
 Acq: 09 Oct 2025 13:19

Tgt Ion:142 Resp: 1166  
 Ion Ratio Lower Upper  
 142 100  
 127 61.1 37.2 55.8#  
 141 3.3 11.4 17.0#

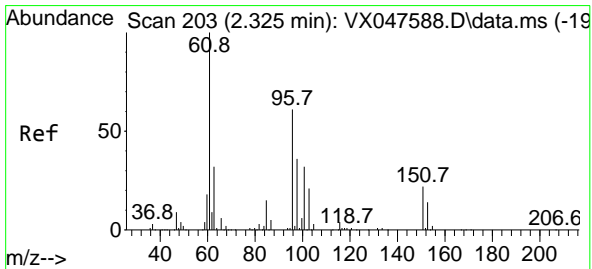
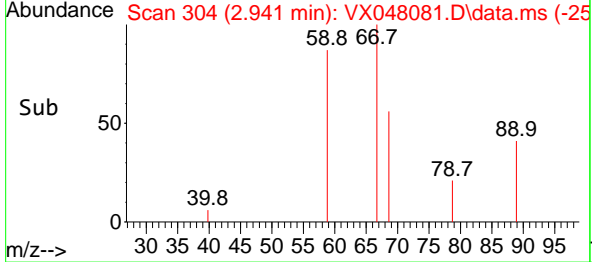
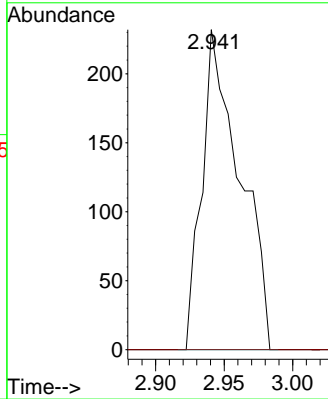
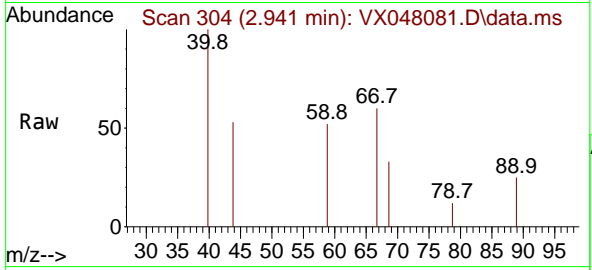




#11  
 Tert butyl alcohol  
 Concen: 2.235 ug/l  
 RT: 2.941 min Scan# 30  
 Delta R.T. 0.000 min  
 Lab File: VX048081.D  
 Acq: 09 Oct 2025 13:19

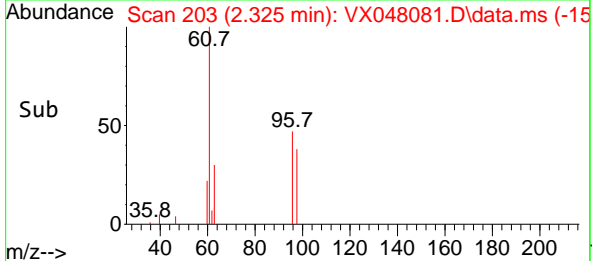
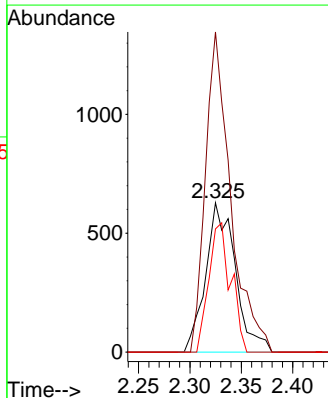
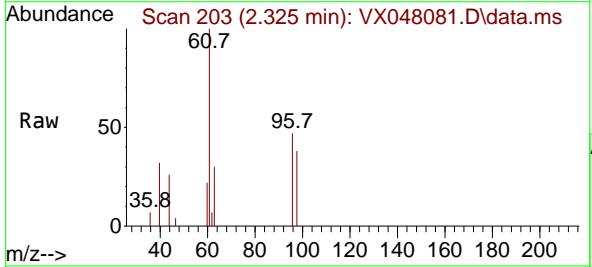
Instrument : MSVOA\_X  
 ClientSampleId : MW-218

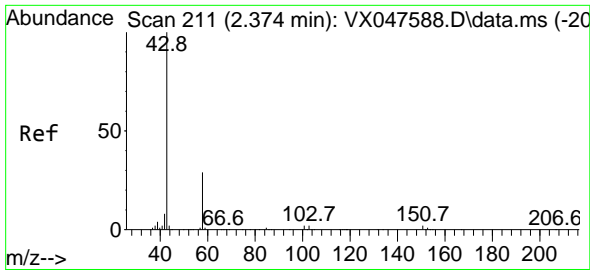
Tgt Ion: 59 Resp: 445  
 Ion Ratio Lower Upper  
 59 100  
 57 0.0 8.3 12.5#



#12  
 1,1-Dichloroethene  
 Concen: 0.944 ug/l  
 RT: 2.325 min Scan# 203  
 Delta R.T. 0.000 min  
 Lab File: VX048081.D  
 Acq: 09 Oct 2025 13:19

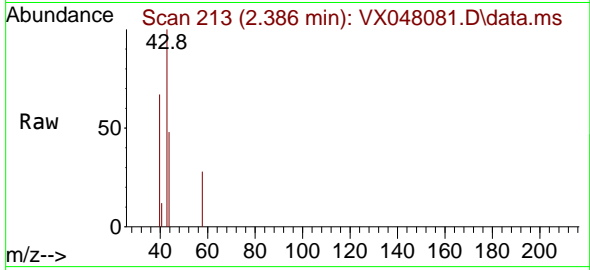
Tgt Ion: 96 Resp: 1260  
 Ion Ratio Lower Upper  
 96 100  
 61 214.5 131.0 196.6#  
 98 82.5 47.7 71.5#



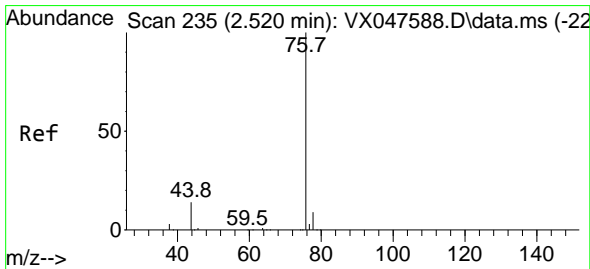
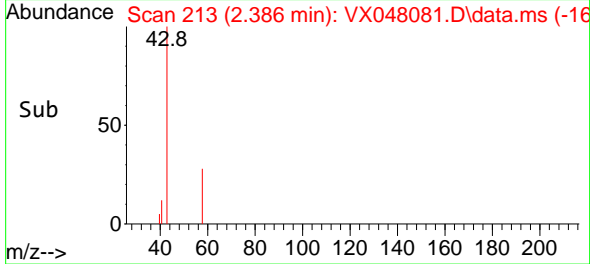
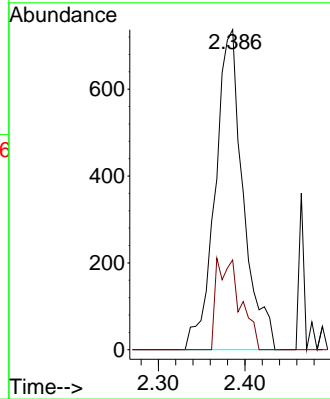


#16  
 Acetone  
 Concen: 2.132 ug/l  
 RT: 2.386 min Scan# 211  
 Delta R.T. 0.012 min  
 Lab File: VX048081.D  
 Acq: 09 Oct 2025 13:19

Instrument : MSVOA\_X  
 ClientSampleId : MW-218

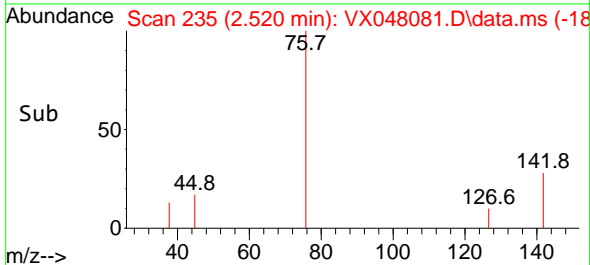
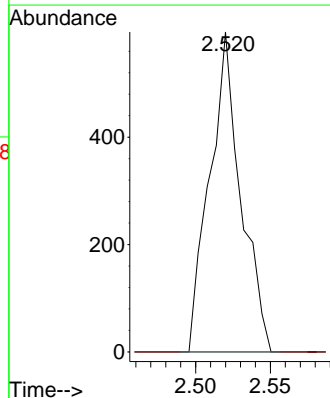
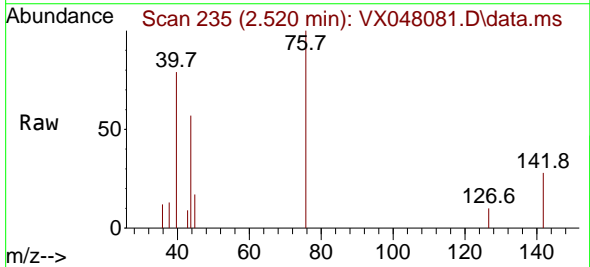


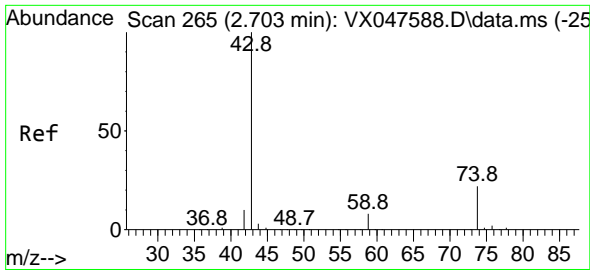
Tgt Ion: 43 Resp: 1657  
 Ion Ratio Lower Upper  
 43 100  
 58 18.9 23.4 35.0#



#17  
 Carbon Disulfide  
 Concen: 0.236 ug/l  
 RT: 2.520 min Scan# 235  
 Delta R.T. 0.000 min  
 Lab File: VX048081.D  
 Acq: 09 Oct 2025 13:19

Tgt Ion: 76 Resp: 861  
 Ion Ratio Lower Upper  
 76 100  
 78 0.0 6.8 10.2#

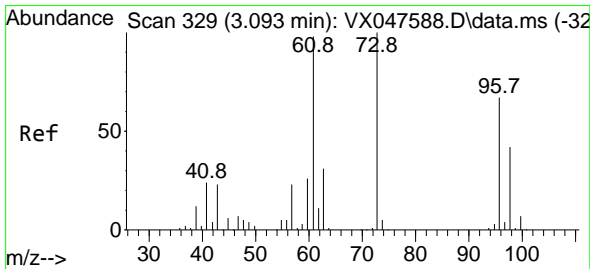
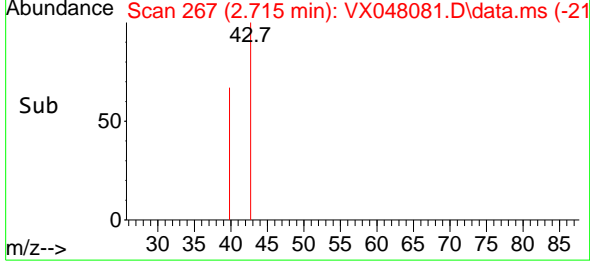
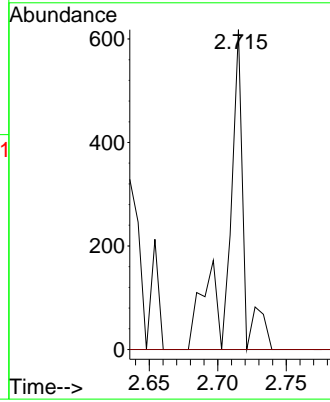
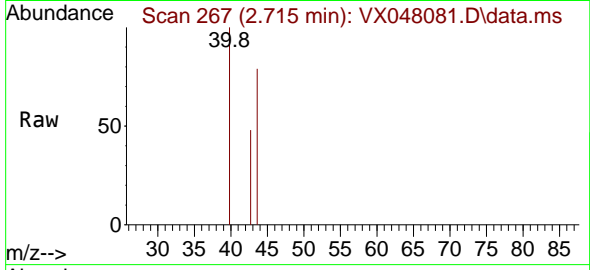




#18  
 Methyl Acetate  
 Concen: 0.290 ug/l  
 RT: 2.715 min Scan# 20  
 Delta R.T. 0.012 min  
 Lab File: VX048081.D  
 Acq: 09 Oct 2025 13:19

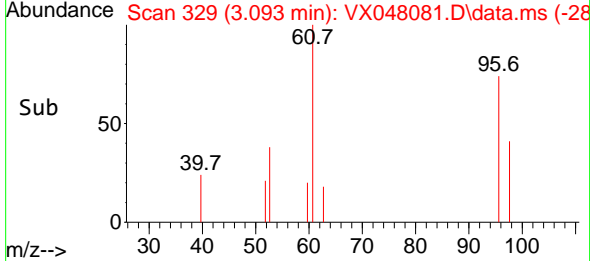
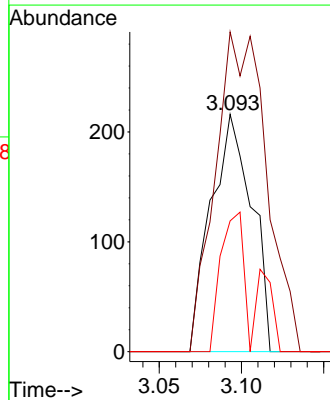
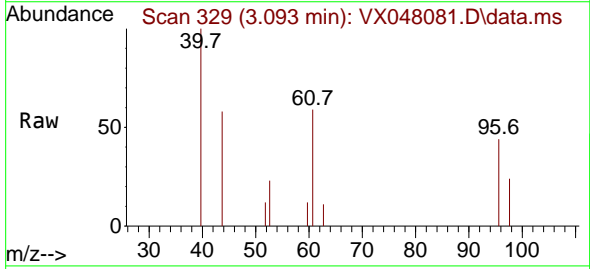
Instrument :  
 MSVOA\_X  
 ClientSampleId :  
 MW-218

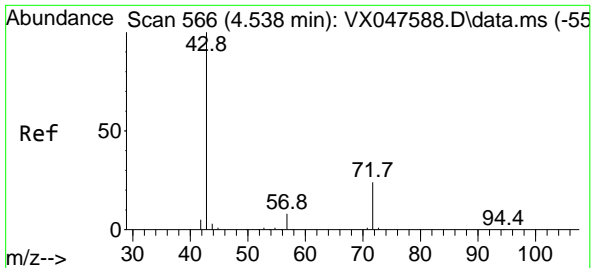
Tgt Ion: 43 Resp: 502  
 Ion Ratio Lower Upper  
 43 100  
 74 0.0 17.4 26.2#



#21  
 trans-1,2-Dichloroethene  
 Concen: 0.260 ug/l  
 RT: 3.093 min Scan# 329  
 Delta R.T. 0.000 min  
 Lab File: VX048081.D  
 Acq: 09 Oct 2025 13:19

Tgt Ion: 96 Resp: 373  
 Ion Ratio Lower Upper  
 96 100  
 61 134.7 116.2 174.2  
 98 55.1 49.3 73.9

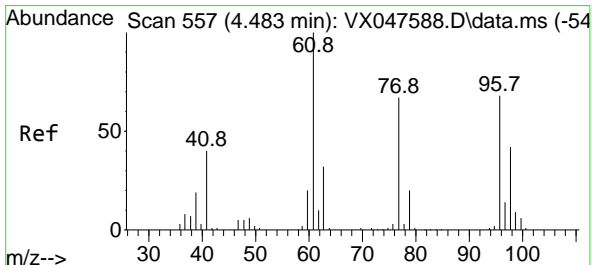
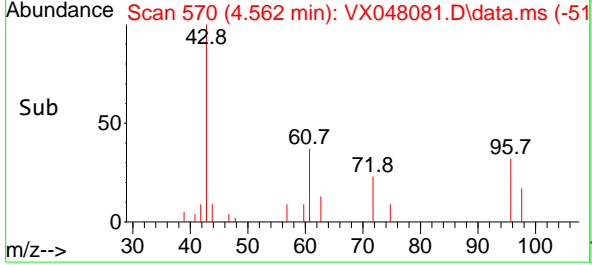
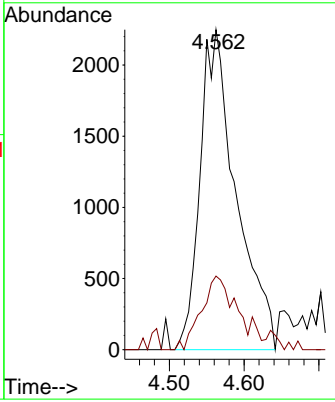
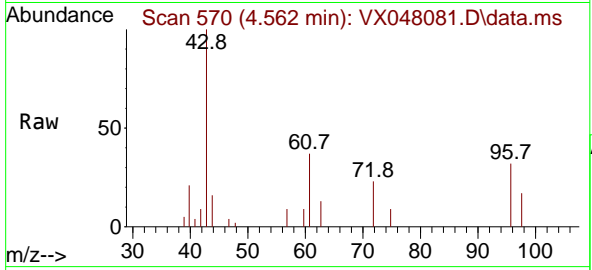




#25  
 2-Butanone  
 Concen: 7.777 ug/l  
 RT: 4.562 min Scan# 51  
 Delta R.T. 0.024 min  
 Lab File: VX048081.D  
 Acq: 09 Oct 2025 13:19

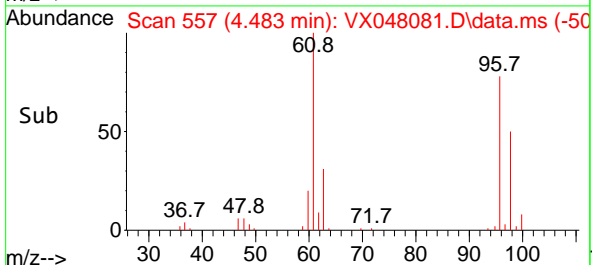
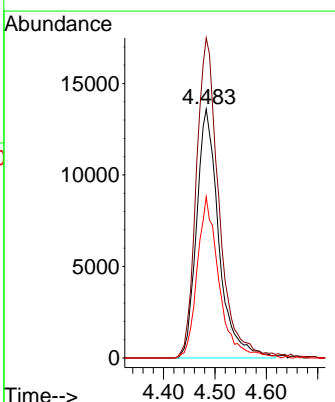
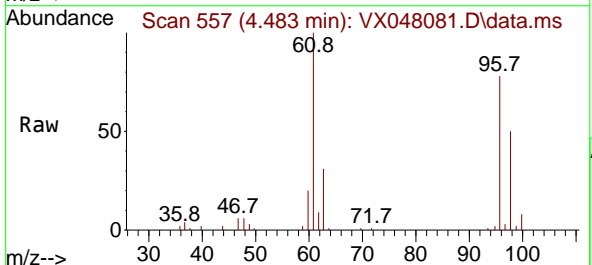
Instrument : MSVOA\_X  
 ClientSampleId : MW-218

Tgt Ion: 43 Resp: 7540  
 Ion Ratio Lower Upper  
 43 100  
 72 23.0 20.1 30.1

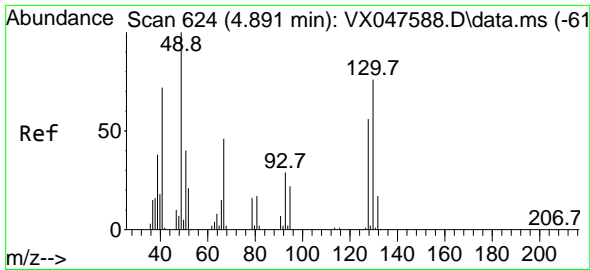


#27  
 cis-1,2-Dichloroethene  
 Concen: 23.278 ug/l  
 RT: 4.483 min Scan# 557  
 Delta R.T. 0.000 min  
 Lab File: VX048081.D  
 Acq: 09 Oct 2025 13:19

Tgt Ion: 96 Resp: 40949  
 Ion Ratio Lower Upper  
 96 100  
 61 132.1 0.0 303.2  
 98 63.4 0.0 127.8



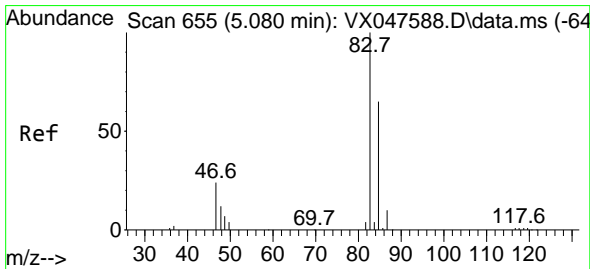
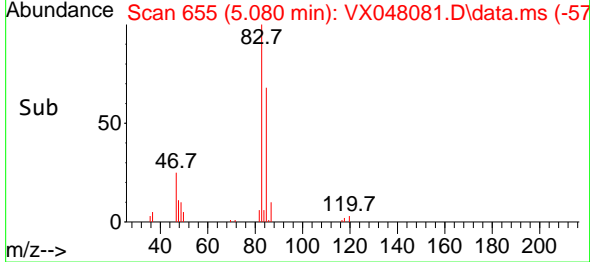
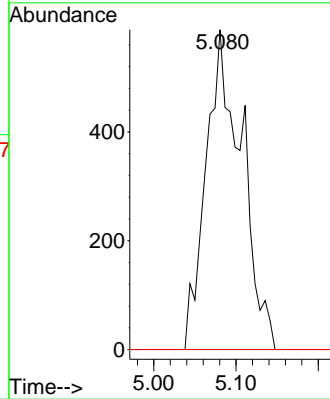
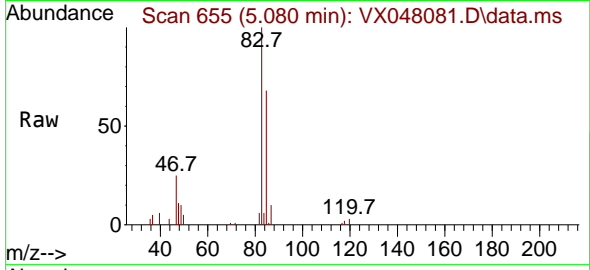




#28  
 Bromochloromethane  
 Concen: 1.432 ug/l  
 RT: 5.080 min Scan# 61  
 Delta R.T. 0.189 min  
 Lab File: VX048081.D  
 Acq: 09 Oct 2025 13:19

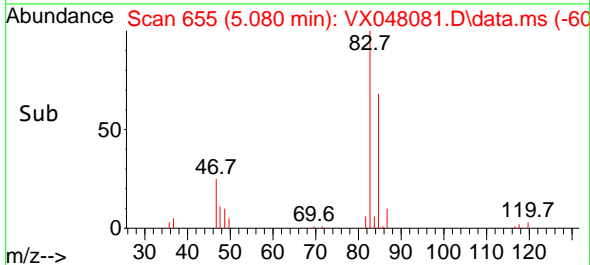
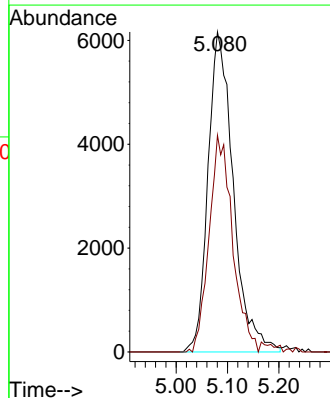
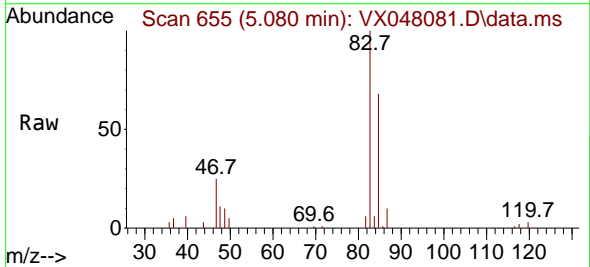
Instrument :  
 MSVOA\_X  
 ClientSampleId :  
 MW-218

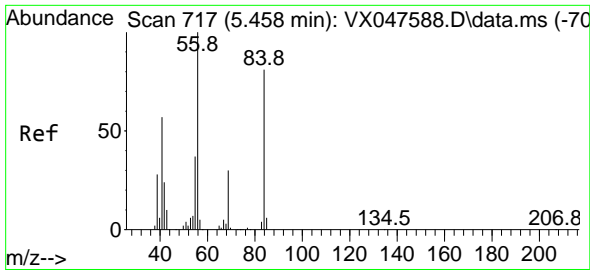
Tgt Ion: 49 Resp: 1773  
 Ion Ratio Lower Upper  
 49 100  
 129 0.0 0.0 3.2  
 130 0.0 57.8 86.8#



#30  
 Chloroform  
 Concen: 7.333 ug/l  
 RT: 5.080 min Scan# 655  
 Delta R.T. 0.000 min  
 Lab File: VX048081.D  
 Acq: 09 Oct 2025 13:19

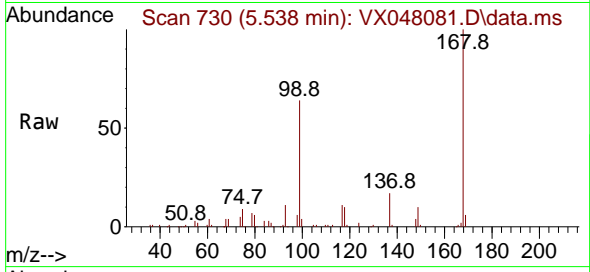
Tgt Ion: 83 Resp: 21015  
 Ion Ratio Lower Upper  
 83 100  
 85 67.7 51.8 77.6



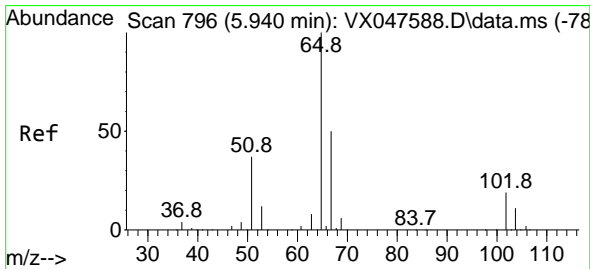
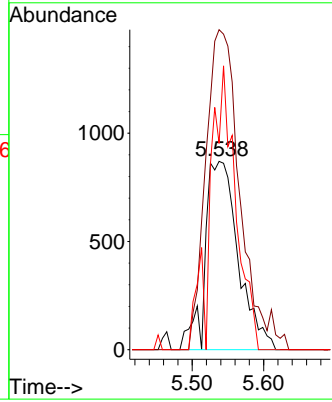
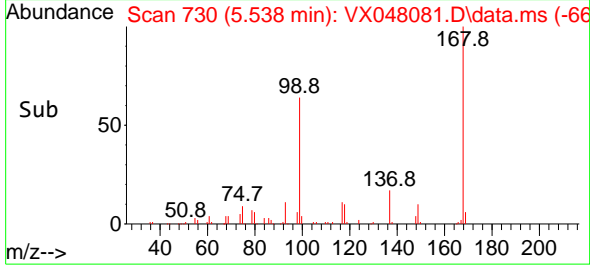


#31  
 Cyclohexane  
 Concen: 1.191 ug/l  
 RT: 5.538 min Scan# 717  
 Delta R.T. 0.079 min  
 Lab File: VX048081.D  
 Acq: 09 Oct 2025 13:19

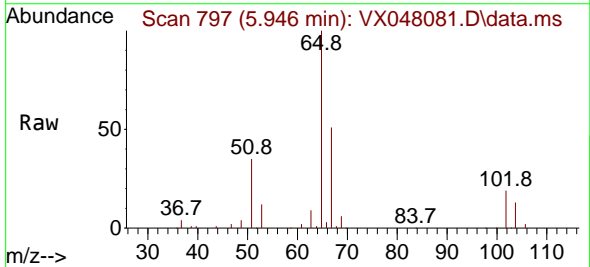
Instrument : MSVOA\_X  
 ClientSampleId : MW-218



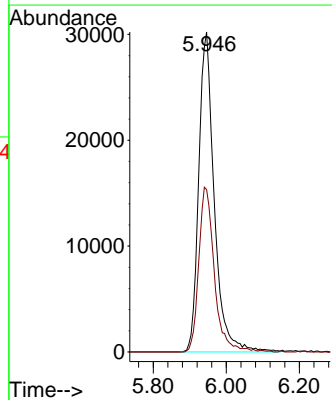
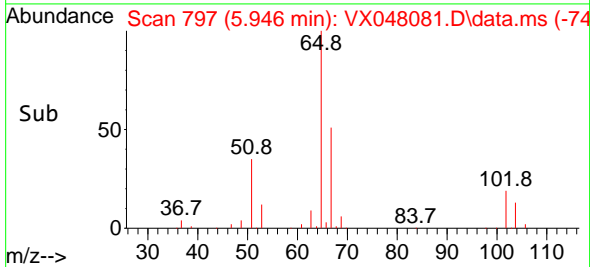
Tgt Ion: 56 Resp: 2814  
 Ion Ratio Lower Upper  
 56 100  
 69 169.9 23.8 35.8#  
 84 109.5 64.6 97.0#

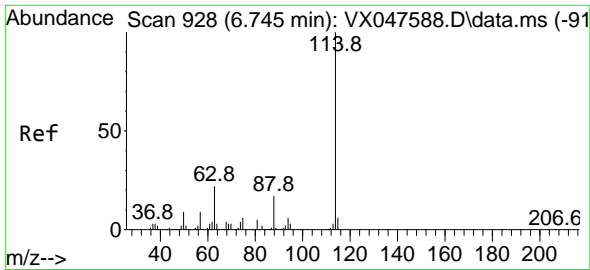


#33  
 1,2-Dichloroethane-d4  
 Concen: 49.909 ug/l  
 RT: 5.946 min Scan# 797  
 Delta R.T. 0.006 min  
 Lab File: VX048081.D  
 Acq: 09 Oct 2025 13:19



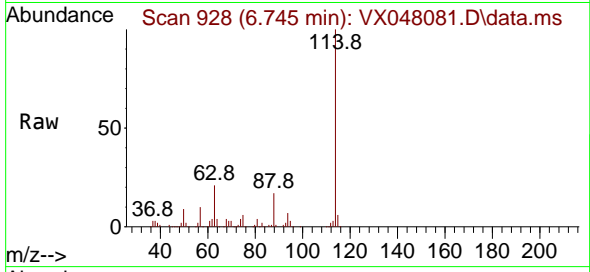
Tgt Ion: 65 Resp: 89211  
 Ion Ratio Lower Upper  
 65 100  
 67 51.7 0.0 103.0



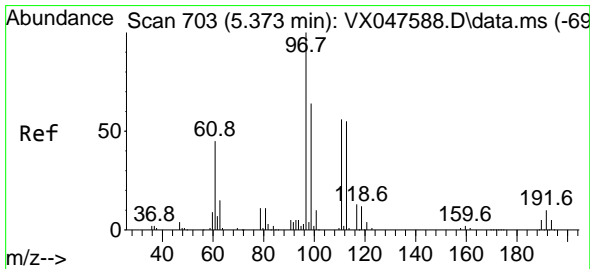
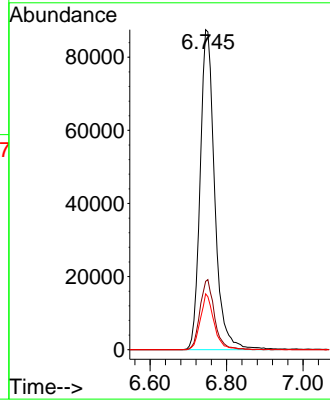
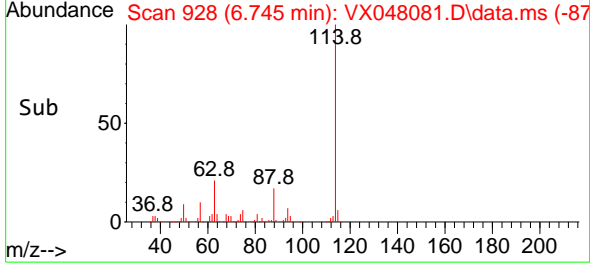


#34  
 1,4-Difluorobenzene  
 Concen: 50.000 ug/l  
 RT: 6.745 min Scan# 91  
 Delta R.T. 0.000 min  
 Lab File: VX048081.D  
 Acq: 09 Oct 2025 13:19

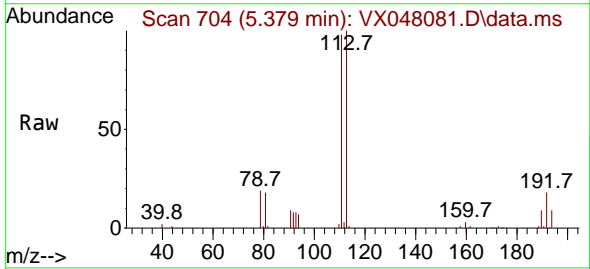
Instrument :  
 MSVOA\_X  
 ClientSampleId :  
 MW-218



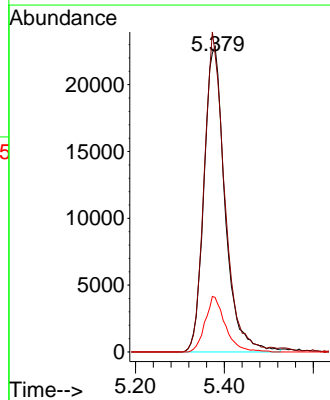
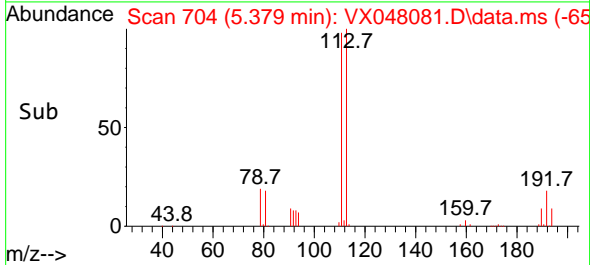
Tgt Ion:114 Resp: 231304  
 Ion Ratio Lower Upper  
 114 100  
 63 21.3 0.0 44.0  
 88 17.5 0.0 34.2

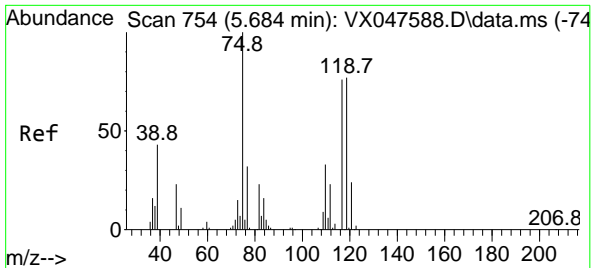


#35  
 Dibromofluoromethane  
 Concen: 48.470 ug/l  
 RT: 5.379 min Scan# 704  
 Delta R.T. 0.006 min  
 Lab File: VX048081.D  
 Acq: 09 Oct 2025 13:19



Tgt Ion:113 Resp: 75189  
 Ion Ratio Lower Upper  
 113 100  
 111 101.3 80.9 121.3  
 192 17.5 14.2 21.4

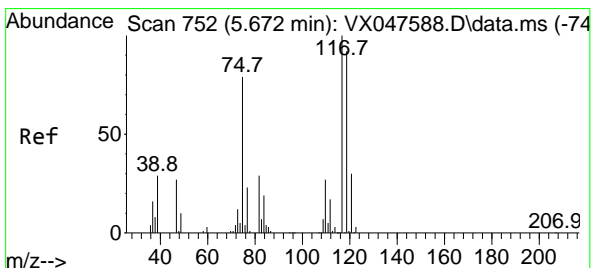
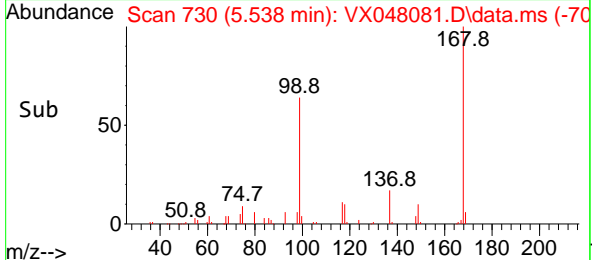
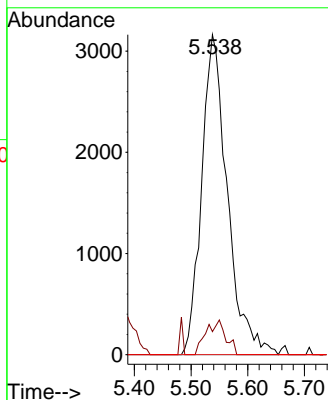
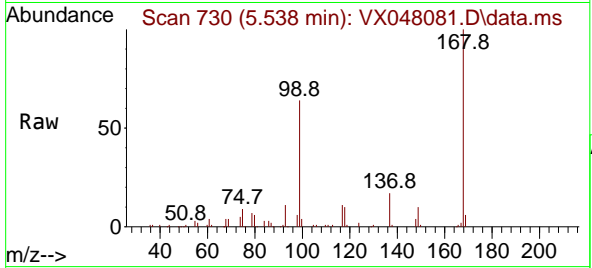




#36  
 1,1-Dichloropropene  
 Concen: 4.394 ug/l  
 RT: 5.538 min Scan# 711  
 Delta R.T. -0.146 min  
 Lab File: VX048081.D  
 Acq: 09 Oct 2025 13:19

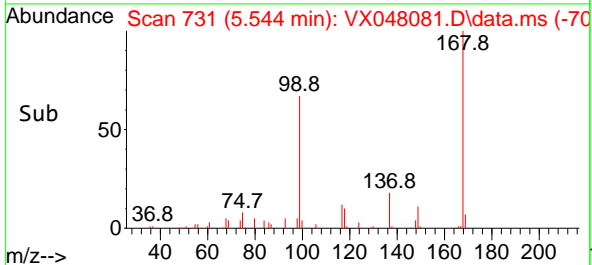
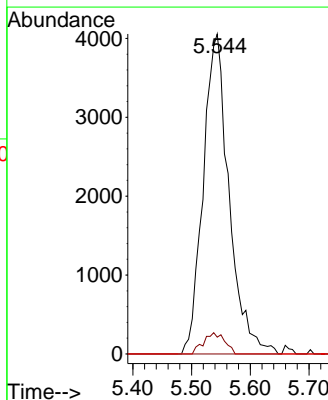
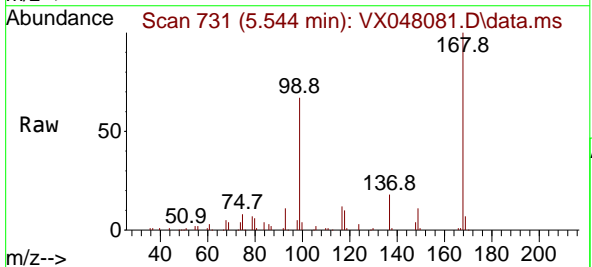
Instrument : MSVOA\_X  
 ClientSampleId : MW-218

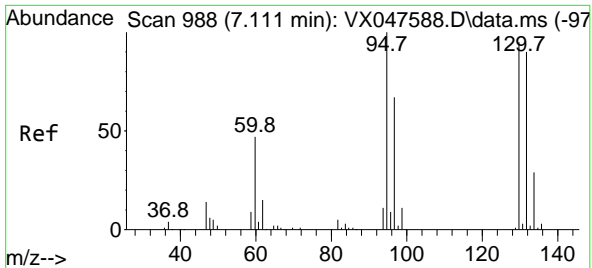
Tgt Ion:	Resp:	Lower	Upper
75	9960		
75	100		
110	8.3	16.7	50.1#
77	0.0	24.3	36.5#



#38  
 Carbon Tetrachloride  
 Concen: 5.043 ug/l  
 RT: 5.544 min Scan# 731  
 Delta R.T. -0.128 min  
 Lab File: VX048081.D  
 Acq: 09 Oct 2025 13:19

Tgt Ion:	Resp:	Lower	Upper
117	12419		
117	100		
119	5.2	73.4	110.2#
121	0.0	23.8	35.6#

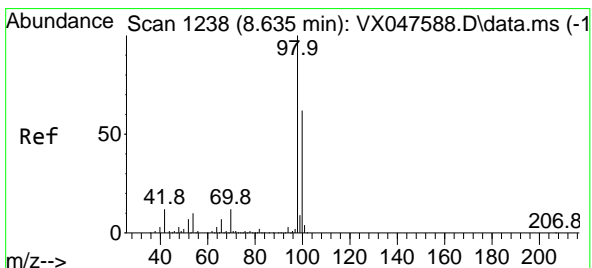
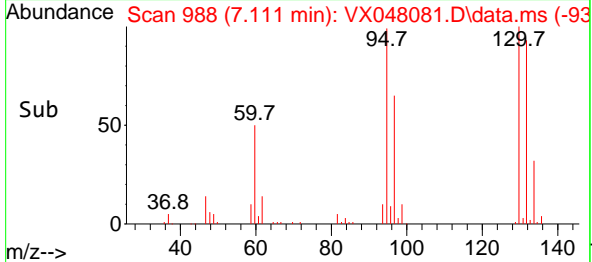
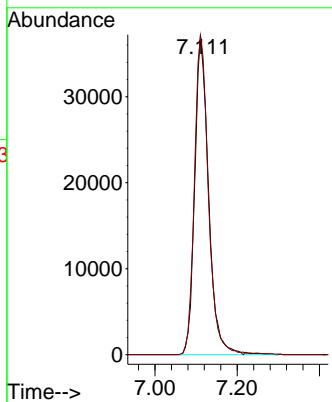
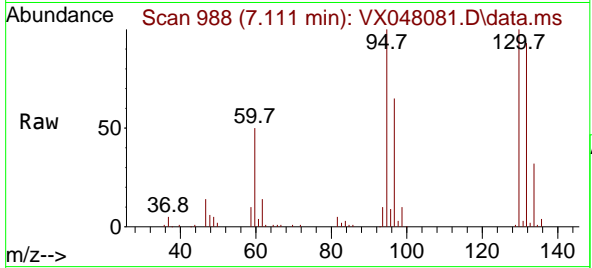




#44  
 Trichloroethene  
 Concen: 52.169 ug/l  
 RT: 7.111 min Scan# 91  
 Delta R.T. 0.000 min  
 Lab File: VX048081.D  
 Acq: 09 Oct 2025 13:19

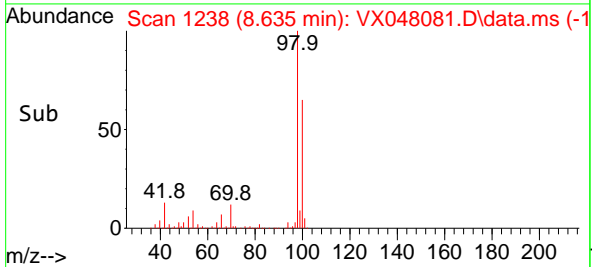
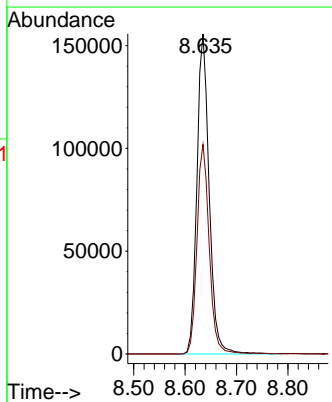
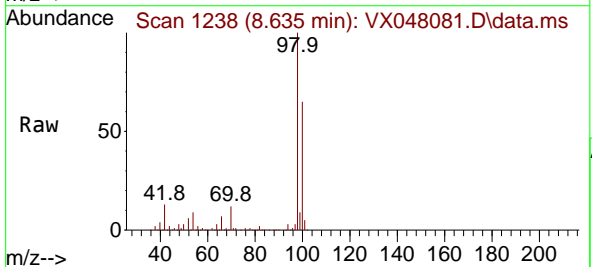
Instrument :  
 MSVOA\_X  
 ClientSampleId :  
 MW-218

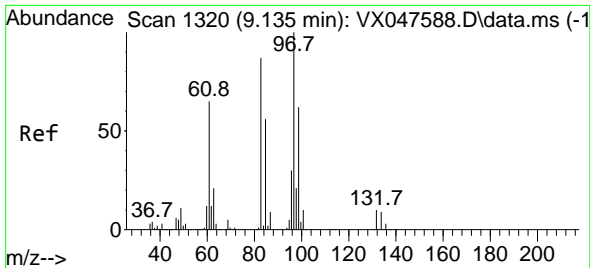
Tgt Ion:130 Resp: 86834  
 Ion Ratio Lower Upper  
 130 100  
 95 99.7 0.0 210.8



#50  
 Toluene-d8  
 Concen: 48.072 ug/l  
 RT: 8.635 min Scan# 1238  
 Delta R.T. 0.000 min  
 Lab File: VX048081.D  
 Acq: 09 Oct 2025 13:19

Tgt Ion: 98 Resp: 258033  
 Ion Ratio Lower Upper  
 98 100  
 100 65.1 53.0 79.4

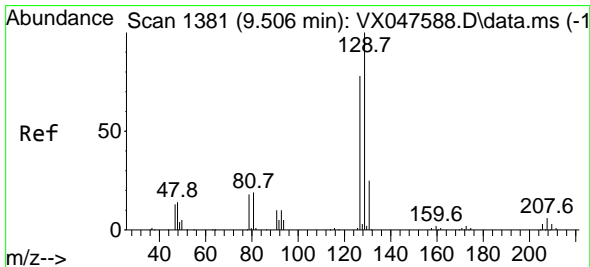
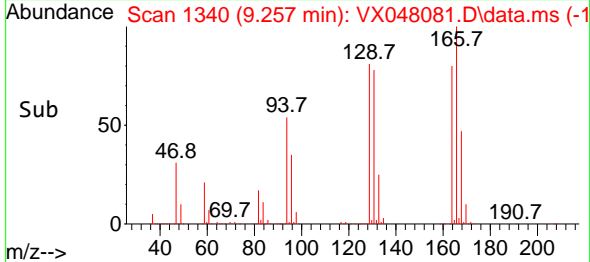
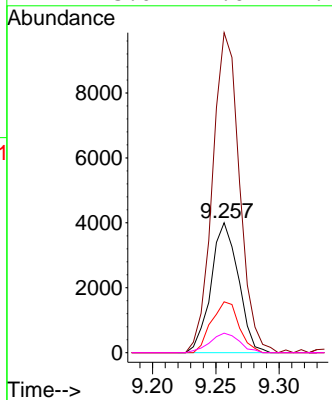
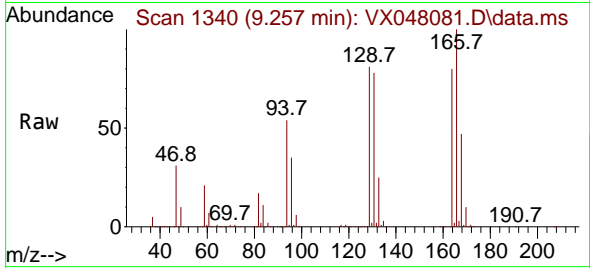




#55  
 1,1,2-Trichloroethane  
 Concen: 3.673 ug/l  
 RT: 9.257 min Scan# 1340  
 Delta R.T. 0.122 min  
 Lab File: VX048081.D  
 Acq: 09 Oct 2025 13:19

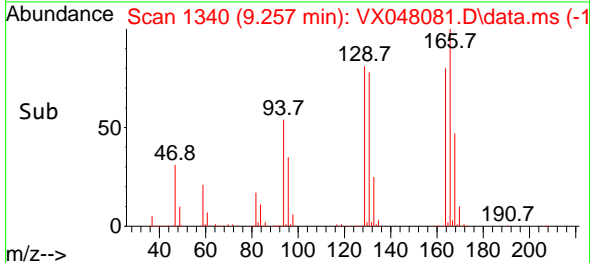
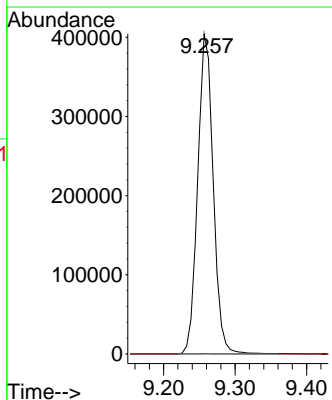
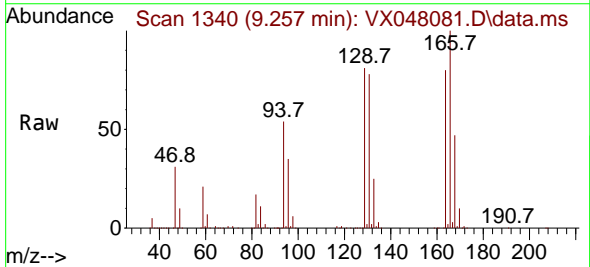
Instrument : MSVOA\_X  
 ClientSampleId : MW-218

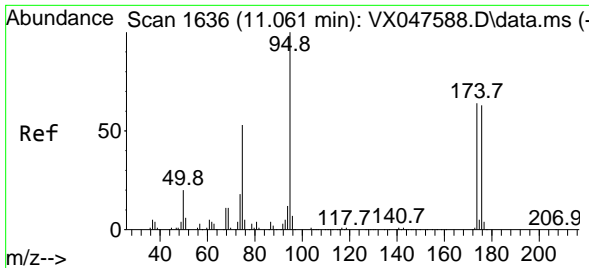
Tgt Ion	Resp	Lower	Upper
97	6008		
97	100		
83	246.4	69.6	104.4#
85	39.2	45.0	67.6#
99	15.0	49.6	74.4#



#60  
 Dibromochloromethane  
 Concen: 322.512 ug/l  
 RT: 9.257 min Scan# 1340  
 Delta R.T. -0.250 min  
 Lab File: VX048081.D  
 Acq: 09 Oct 2025 13:19

Tgt Ion	Resp	Lower	Upper
129	607782		
129	100		
127	0.0	38.4	115.2#

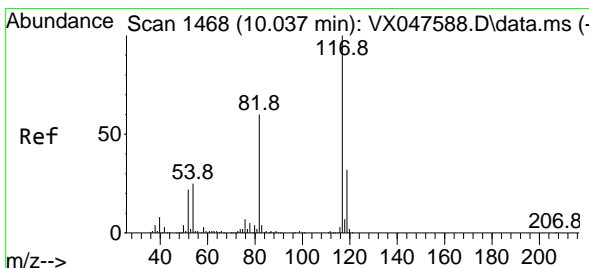
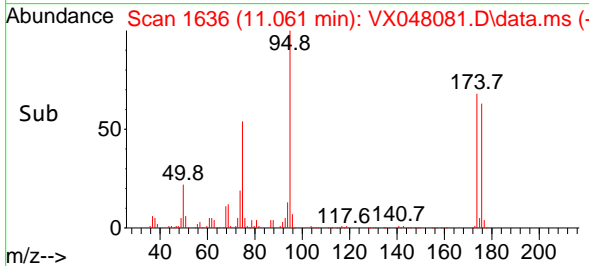
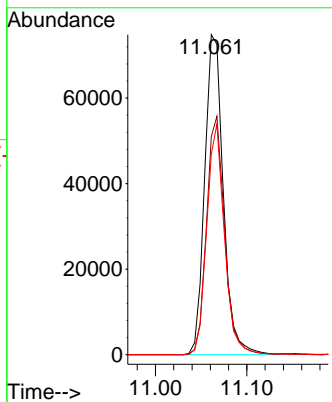
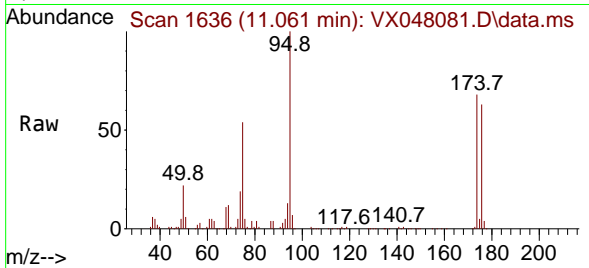




#62  
 4-Bromofluorobenzene  
 Concen: 51.809 ug/l  
 RT: 11.061 min Scan# 1  
 Delta R.T. 0.000 min  
 Lab File: VX048081.D  
 Acq: 09 Oct 2025 13:19

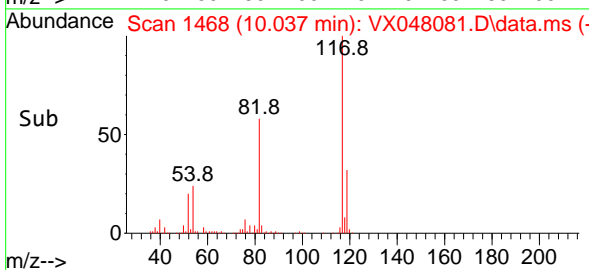
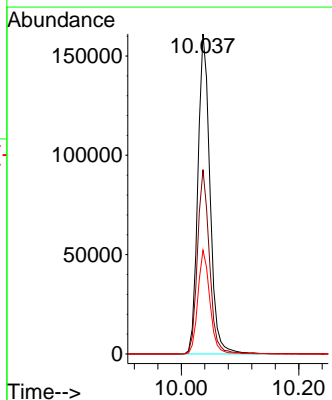
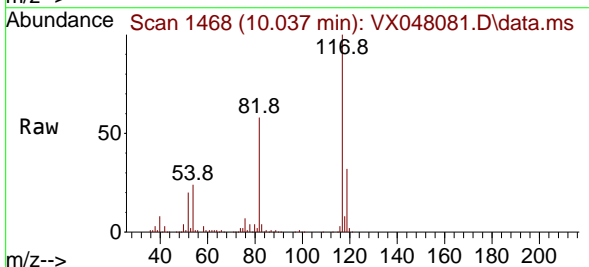
Instrument :  
 MSVOA\_X  
 ClientSampleId :  
 MW-218

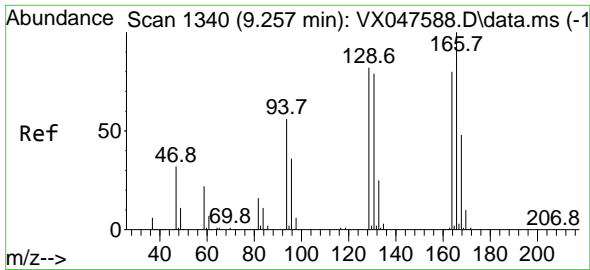
Tgt Ion	Resp	Lower	Upper
95	105541		
174	72.7	0.0	141.6
176	68.7	0.0	138.4



#63  
 Chlorobenzene-d5  
 Concen: 50.000 ug/l  
 RT: 10.037 min Scan# 1468  
 Delta R.T. 0.000 min  
 Lab File: VX048081.D  
 Acq: 09 Oct 2025 13:19

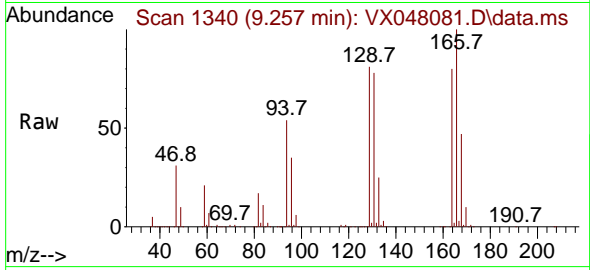
Tgt Ion	Resp	Lower	Upper
117	229611		
82	57.6	47.8	71.6
119	32.4	25.2	37.8



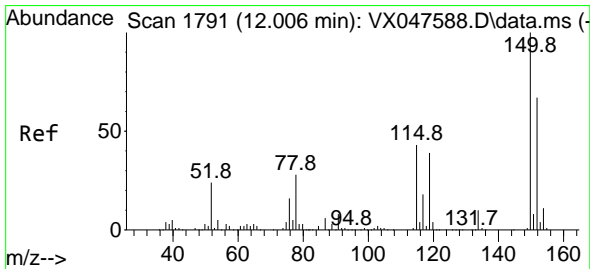
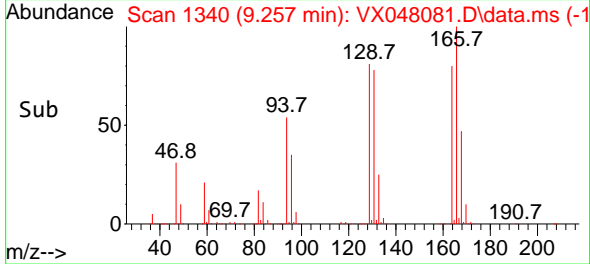
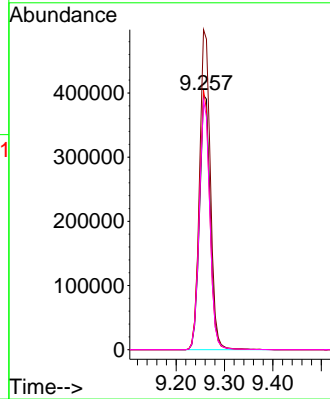


#64  
 Tetrachloroethene  
 Concen: 406.751 ug/l  
 RT: 9.257 min Scan# 11  
 Delta R.T. 0.000 min  
 Lab File: VX048081.D  
 Acq: 09 Oct 2025 13:19

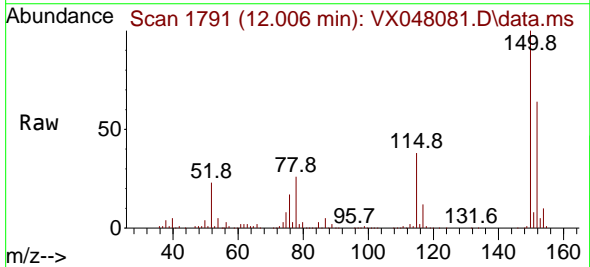
Instrument :  
 MSVOA\_X  
 ClientSampleId :  
 MW-218



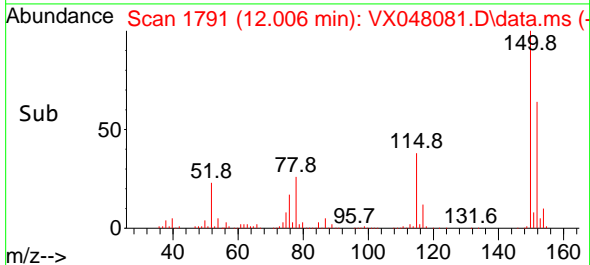
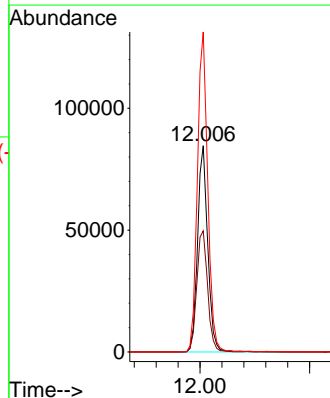
Tgt Ion:164 Resp: 608834  
 Ion Ratio Lower Upper  
 164 100  
 166 125.7 100.2 150.2  
 129 101.9 81.8 122.6  
 131 98.0 78.6 118.0



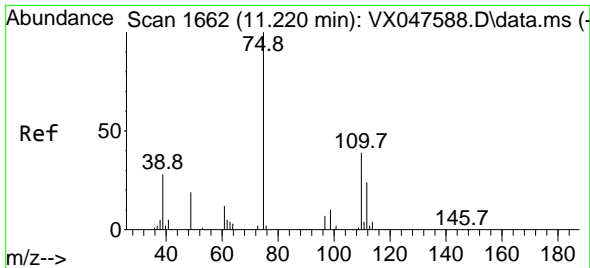
#72  
 1,4-Dichlorobenzene-d4  
 Concen: 50.000 ug/l  
 RT: 12.006 min Scan# 1791  
 Delta R.T. 0.000 min  
 Lab File: VX048081.D  
 Acq: 09 Oct 2025 13:19



Tgt Ion:152 Resp: 109726  
 Ion Ratio Lower Upper  
 152 100  
 115 62.6 44.9 134.5  
 150 157.9 0.0 352.0



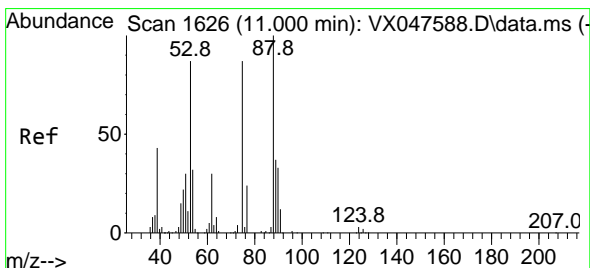
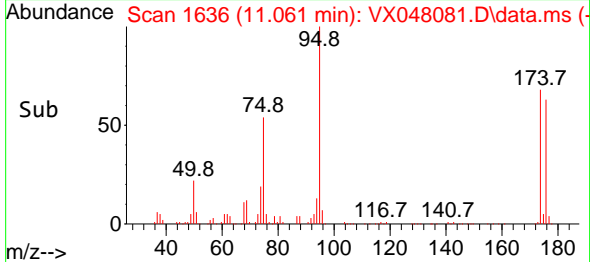
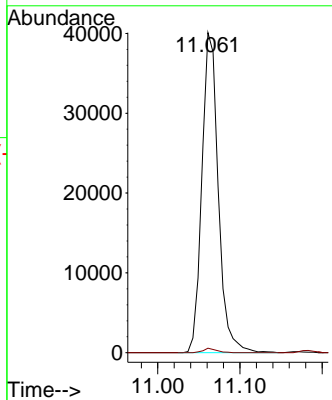
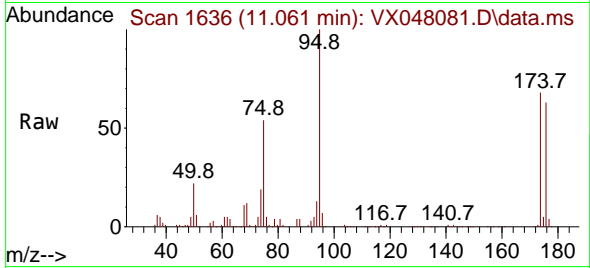




#76  
 1,2,3-Trichloropropane  
 Concen: 25.025 ug/l  
 RT: 11.061 min Scan# 1636  
 Delta R.T. -0.158 min  
 Lab File: VX048081.D  
 Acq: 09 Oct 2025 13:19

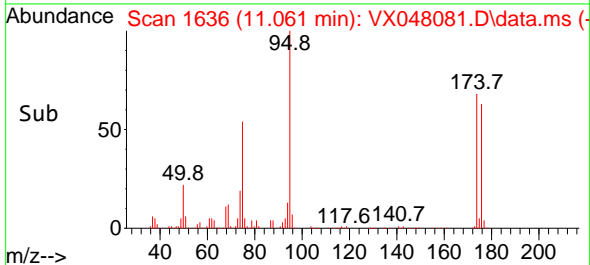
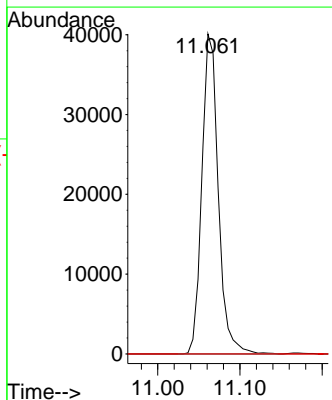
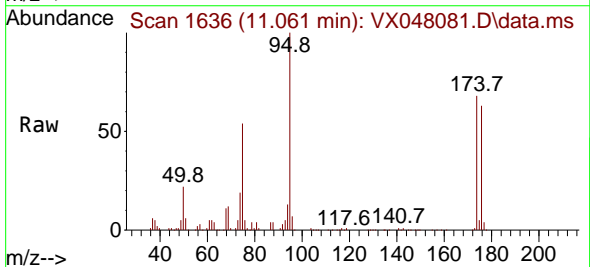
Instrument : MSVOA\_X  
 ClientSampleId : MW-218

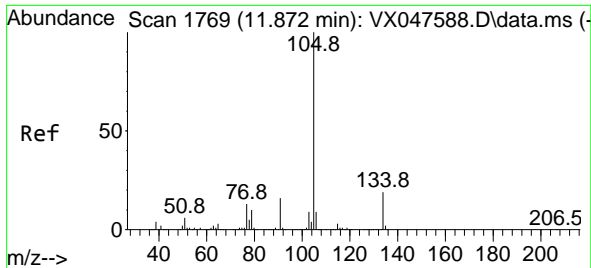
Tgt Ion: 75 Resp: 55596  
 Ion Ratio Lower Upper  
 75 100  
 77 1.1 18.8 56.4#



#81  
 trans-1,4-Dichloro-2-butene  
 Concen: 63.818 ug/l  
 RT: 11.061 min Scan# 1636  
 Delta R.T. 0.061 min  
 Lab File: VX048081.D  
 Acq: 09 Oct 2025 13:19

Tgt Ion: 75 Resp: 55596  
 Ion Ratio Lower Upper  
 75 100  
 53 0.0 83.4 125.2#  
 89 0.0 36.3 54.5#

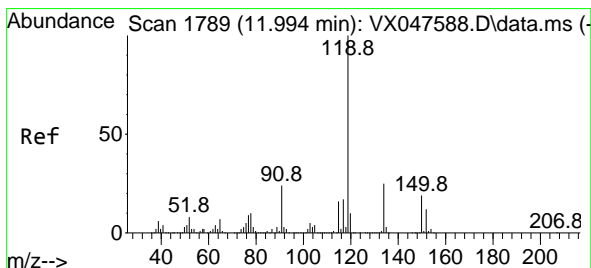
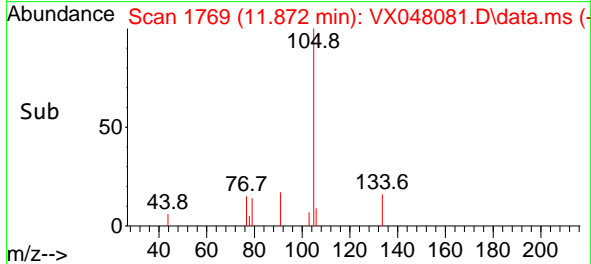
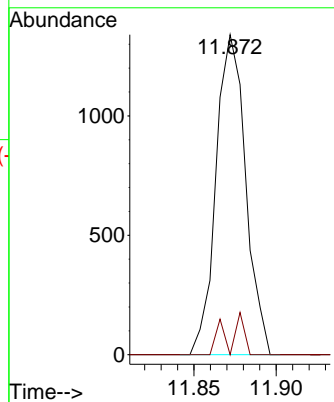
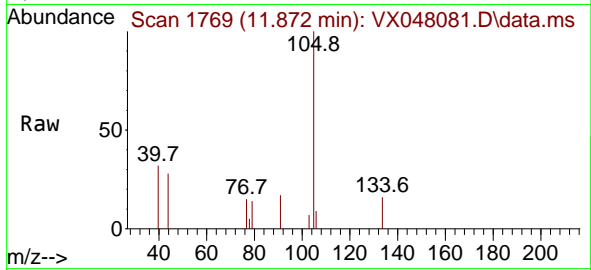




#85  
 sec-Butylbenzene  
 Concen: 0.202 ug/l  
 RT: 11.872 min Scan# 1769  
 Delta R.T. 0.000 min  
 Lab File: VX048081.D  
 Acq: 09 Oct 2025 13:19

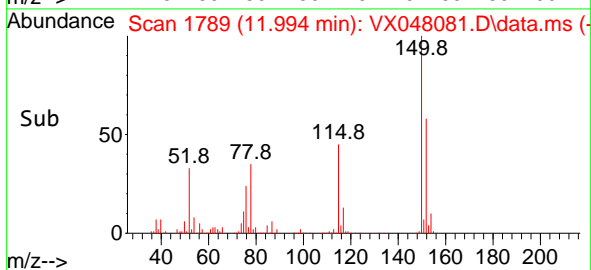
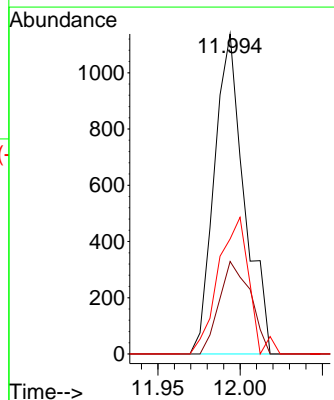
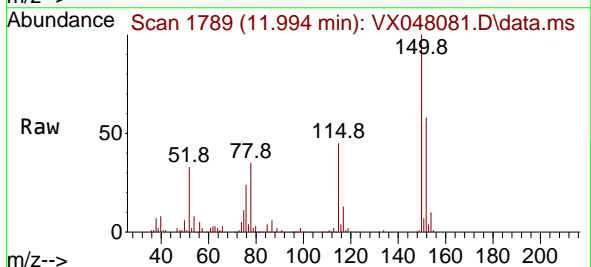
Instrument : MSVOA\_X  
 ClientSampleId : MW-218

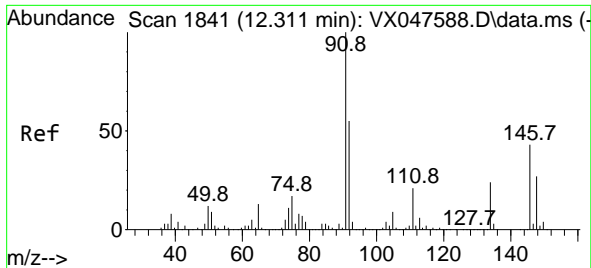
Tgt Ion:105 Resp: 1683  
 Ion Ratio Lower Upper  
 105 100  
 134 3.2 9.8 29.5#



#86  
 p-Isopropyltoluene  
 Concen: 0.204 ug/l  
 RT: 11.994 min Scan# 1789  
 Delta R.T. 0.000 min  
 Lab File: VX048081.D  
 Acq: 09 Oct 2025 13:19

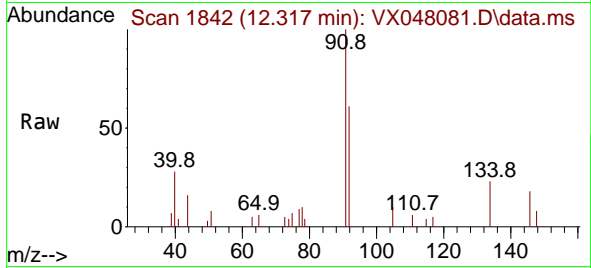
Tgt Ion:119 Resp: 1442  
 Ion Ratio Lower Upper  
 119 100  
 134 30.0 12.6 37.8  
 91 44.0 12.6 37.6#





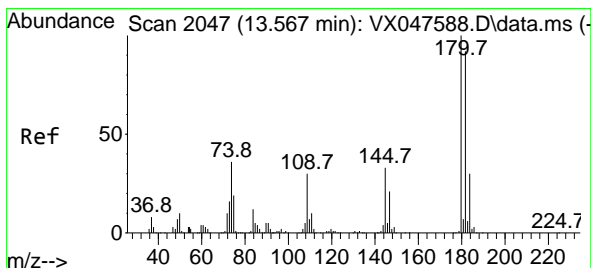
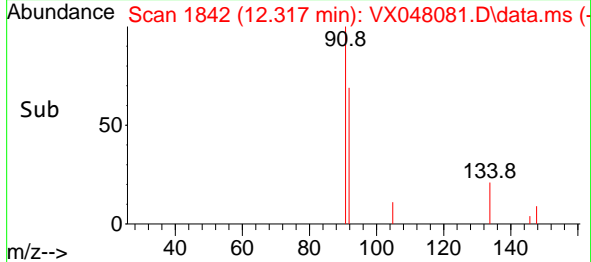
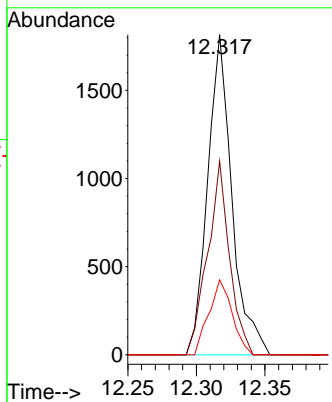
#89  
 n-Butylbenzene  
 Concen: 0.343 ug/l  
 RT: 12.317 min Scan# 1842  
 Delta R.T. 0.006 min  
 Lab File: VX048081.D  
 Acq: 09 Oct 2025 13:19

Instrument : MSVOA\_X  
 ClientSampleId : MW-218



Tgt Ion: 91 Resp: 2239

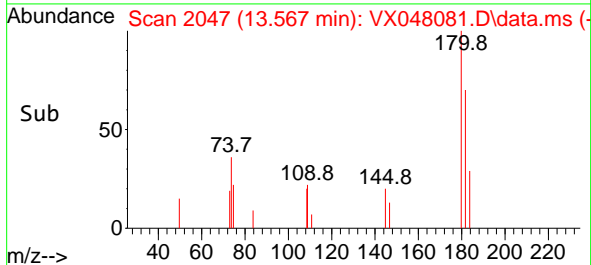
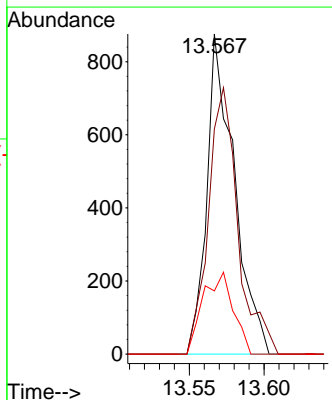
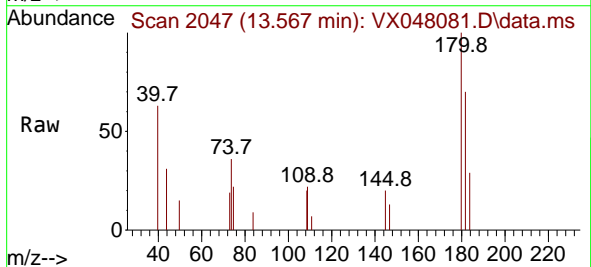
Ion	Ratio	Lower	Upper
91	100		
92	54.7	27.6	82.7
134	22.4	12.6	37.8

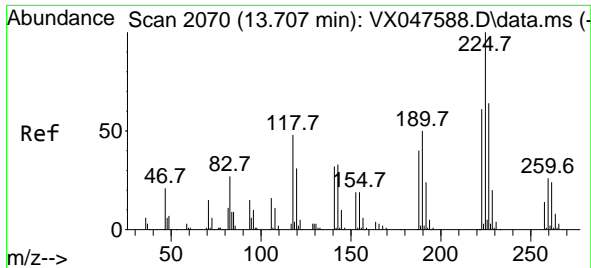


#93  
 1,2,4-Trichlorobenzene  
 Concen: 0.473 ug/l  
 RT: 13.567 min Scan# 2047  
 Delta R.T. 0.000 min  
 Lab File: VX048081.D  
 Acq: 09 Oct 2025 13:19

Tgt Ion: 180 Resp: 1118

Ion	Ratio	Lower	Upper
180	100		
182	89.5	46.6	139.8
145	28.2	16.4	49.1

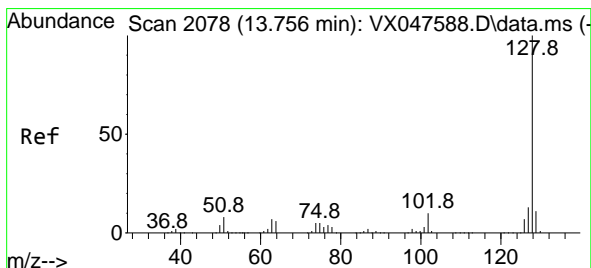
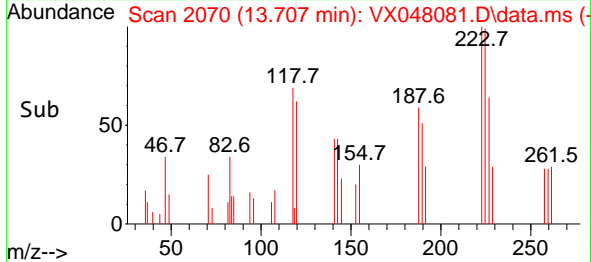
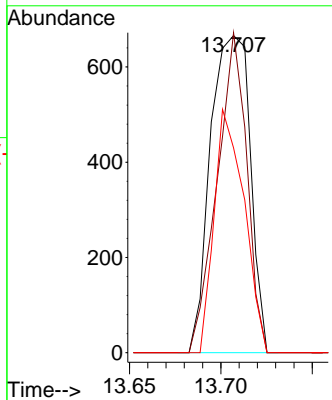
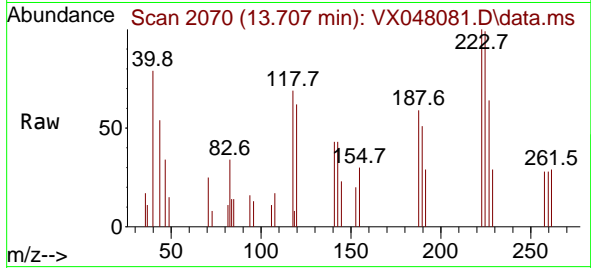




#94  
 Hexachlorobutadiene  
 Concen: 1.253 ug/l  
 RT: 13.707 min Scan# 2070  
 Delta R.T. 0.000 min  
 Lab File: VX048081.D  
 Acq: 09 Oct 2025 13:19

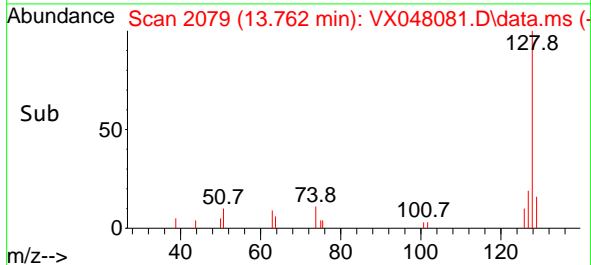
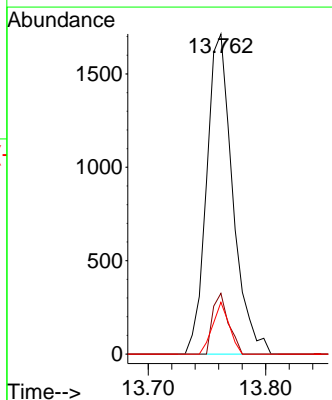
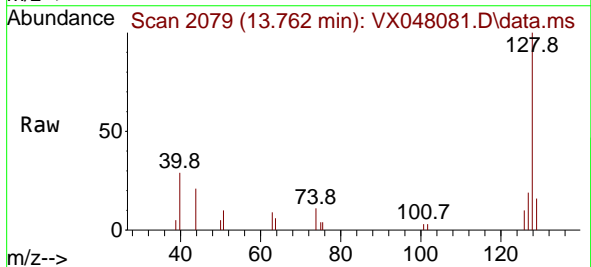
Instrument : MSVOA\_X  
 ClientSampleId : MW-218

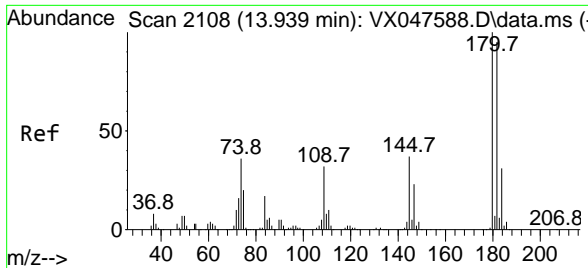
Tgt Ion	Resp	Lower	Upper
225	100		
223	75.6	31.7	95.1
227	58.0	32.0	96.0



#95  
 Naphthalene  
 Concen: 0.368 ug/l  
 RT: 13.762 min Scan# 2079  
 Delta R.T. 0.006 min  
 Lab File: VX048081.D  
 Acq: 09 Oct 2025 13:19

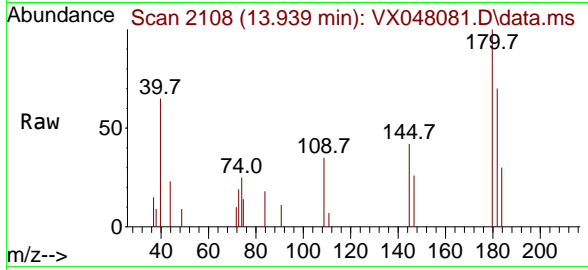
Tgt Ion	Resp	Lower	Upper
128	100		
127	11.6	10.2	15.2
129	10.3	8.8	13.2





#96  
 1,2,3-Trichlorobenzene  
 Concen: 0.546 ug/l  
 RT: 13.939 min Scan# 2108  
 Delta R.T. 0.000 min  
 Lab File: VX048081.D  
 Acq: 09 Oct 2025 13:19

Instrument :  
 MSVOA\_X  
 ClientSampleId :  
 MW-218



Tgt Ion	Resp	Ion Ratio	Lower	Upper
180	1200	100		
182		78.8	47.6	142.8
145		31.4	17.9	53.7

