

Data Path : Z:\voasrv\HPCHEM1\MSVOA_X\Data\VX100925\
 Data File : VX048092.D
 Acq On : 09 Oct 2025 17:05
 Operator : JC/MD
 Sample : IBLK
 Misc : 5.0mL/MSVOA_X/WATER
 ALS Vial : 22 Sample Multiplier: 1

Instrument :
 MSVOA_X
 ClientSampleId :
 IBLK

Quant Time: Oct 10 01:28:12 2025
 Quant Method : Z:\voasrv\HPCHEM1\MSVOA_X\Method\82X091625W.M
 Quant Title : SW846 8260
 QLast Update : Wed Sep 17 06:39:58 2025
 Response via : Initial Calibration

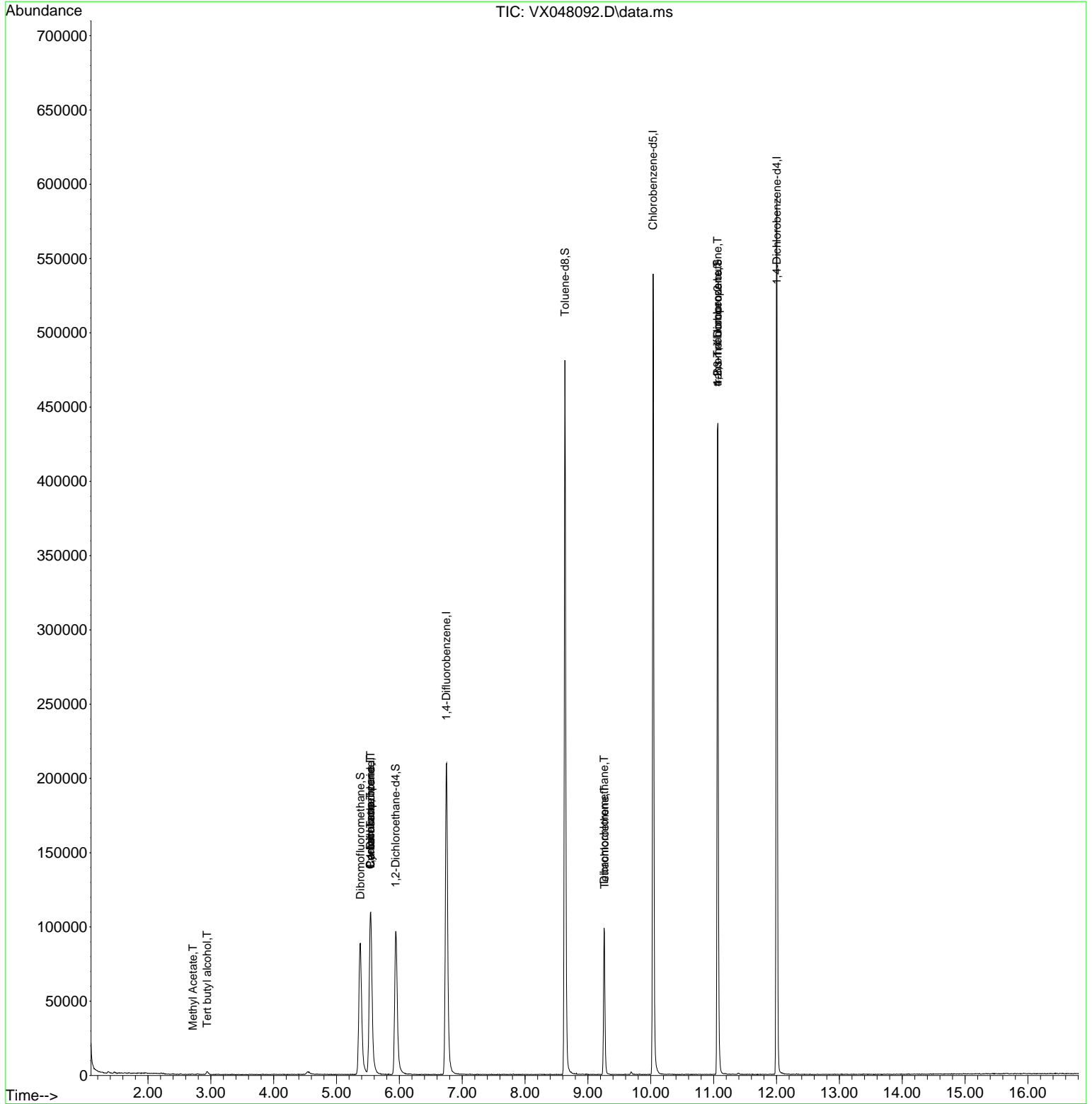
| Compound | R.T. | QIon | Response | Conc | Units | Dev(Min) |
|-------------------------------|--------|----------------|----------|--------|-----------|----------|
| ----- | | | | | | |
| Internal Standards | | | | | | |
| 1) Pentafluorobenzene | 5.544 | 168 | 111442 | 50.000 | ug/l | 0.00 |
| 34) 1,4-Difluorobenzene | 6.745 | 114 | 227134 | 50.000 | ug/l | 0.00 |
| 63) Chlorobenzene-d5 | 10.037 | 117 | 249801 | 50.000 | ug/l | 0.00 |
| 72) 1,4-Dichlorobenzene-d4 | 12.006 | 152 | 128251 | 50.000 | ug/l | 0.00 |
| System Monitoring Compounds | | | | | | |
| 33) 1,2-Dichloroethane-d4 | 5.940 | 65 | 108096 | 60.938 | ug/l | 0.00 |
| Spiked Amount | 50.000 | Range 78 - 117 | Recovery | = | 121.880%# | |
| 35) Dibromofluoromethane | 5.379 | 113 | 86647 | 56.882 | ug/l | 0.00 |
| Spiked Amount | 50.000 | Range 75 - 124 | Recovery | = | 113.760% | |
| 50) Toluene-d8 | 8.635 | 98 | 288693 | 54.771 | ug/l | 0.00 |
| Spiked Amount | 50.000 | Range 92 - 112 | Recovery | = | 109.540% | |
| 62) 4-Bromofluorobenzene | 11.061 | 95 | 129484 | 64.729 | ug/l | 0.00 |
| Spiked Amount | 50.000 | Range 83 - 123 | Recovery | = | 129.460%# | |
| Target Compounds | | | | | | |
| | | | | | | Qvalue |
| 11) Tert butyl alcohol | 2.940 | 59 | 1121 | 5.674 | ug/l # | 72 |
| 18) Methyl Acetate | 2.715 | 43 | 411 | 0.239 | ug/l # | 54 |
| 31) Cyclohexane | 5.538 | 56 | 2677 | 1.142 | ug/l # | 23 |
| 36) 1,1-Dichloropropene | 5.538 | 75 | 9759 | 4.384 | ug/l # | 50 |
| 38) Carbon Tetrachloride | 5.544 | 117 | 12444 | 5.145 | ug/l # | 19 |
| 60) Dibromochloromethane | 9.256 | 129 | 19060 | 10.300 | ug/l # | 11 |
| 64) Tetrachloroethene | 9.262 | 164 | 18698 | 11.482 | ug/l | 99 |
| 76) 1,2,3-Trichloropropane | 11.061 | 75 | 68702 | 26.458 | ug/l # | 39 |
| 81) trans-1,4-Dichloro-2-b... | 11.061 | 75 | 68702 | 67.471 | ug/l # | 8 |
| ----- | | | | | | |

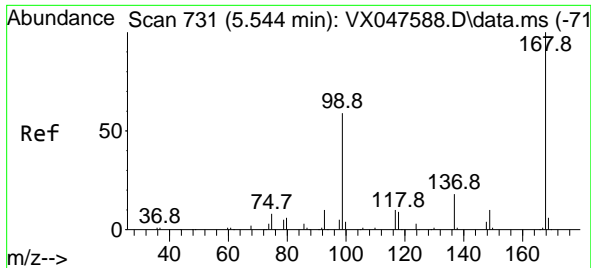
(#) = qualifier out of range (m) = manual integration (+) = signals summed

Data Path : Z:\voasrv\HPCHEM1\MSVOA_X\Data\VX100925\
 Data File : VX048092.D
 Acq On : 09 Oct 2025 17:05
 Operator : JC/MD
 Sample : IBLK
 Misc : 5.0mL/MSVOA_X/WATER
 ALS Vial : 22 Sample Multiplier: 1

Instrument :
 MSVOA_X
 ClientSampleId :
 IBLK

Quant Time: Oct 10 01:28:12 2025
 Quant Method : Z:\voasrv\HPCHEM1\MSVOA_X\Method\82X091625W.M
 Quant Title : SW846 8260
 QLast Update : Wed Sep 17 06:39:58 2025
 Response via : Initial Calibration

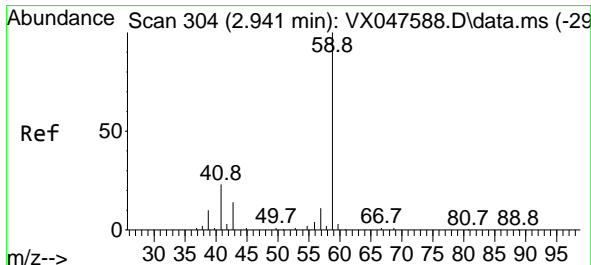
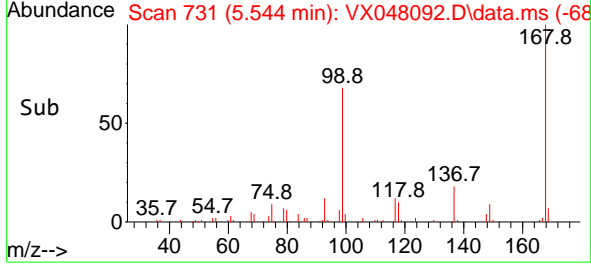
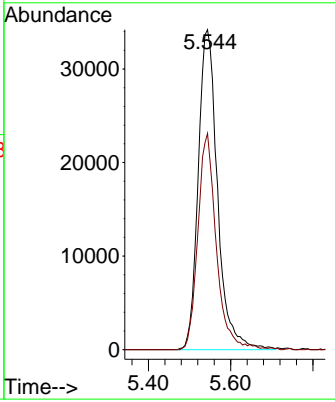
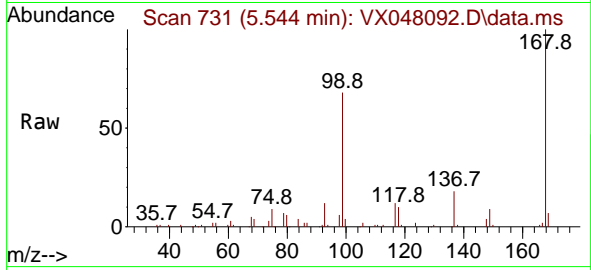




#1
 Pentafluorobenzene
 Concen: 50.000 ug/l
 RT: 5.544 min Scan# 71
 Delta R.T. -0.000 min
 Lab File: VX048092.D
 Acq: 09 Oct 2025 17:05

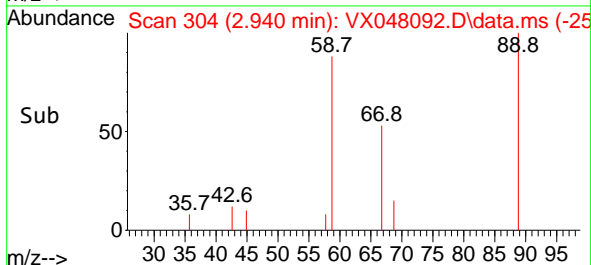
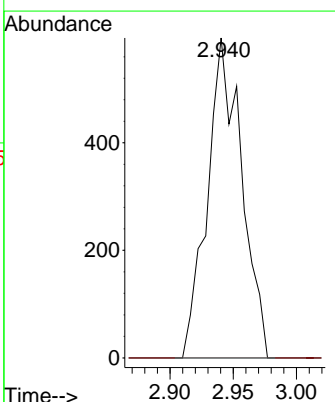
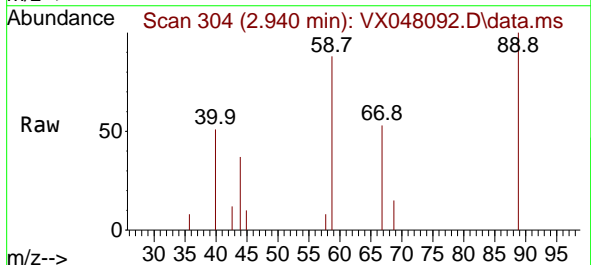
Instrument : MSVOA_X
 ClientSampleId : IBLK

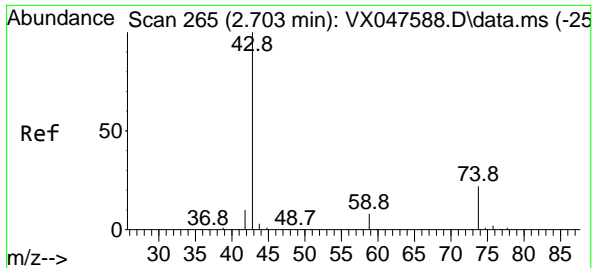
Tgt Ion:168 Resp: 111442
 Ion Ratio Lower Upper
 168 100
 99 67.6 48.8 73.2



#11
 Tert butyl alcohol
 Concen: 5.674 ug/l
 RT: 2.940 min Scan# 304
 Delta R.T. -0.000 min
 Lab File: VX048092.D
 Acq: 09 Oct 2025 17:05

Tgt Ion: 59 Resp: 1121
 Ion Ratio Lower Upper
 59 100
 57 0.0 8.3 12.5#

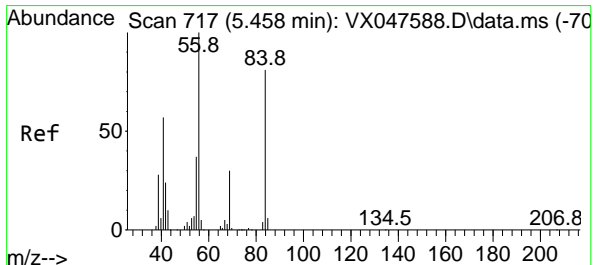
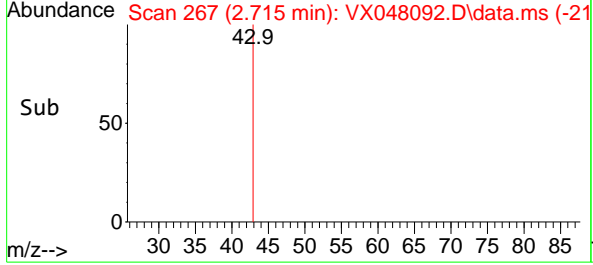
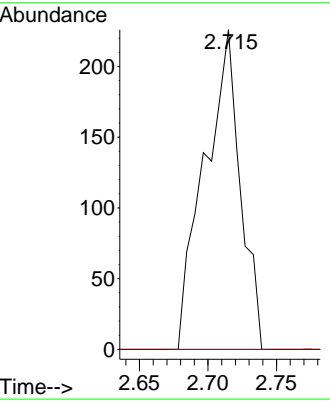
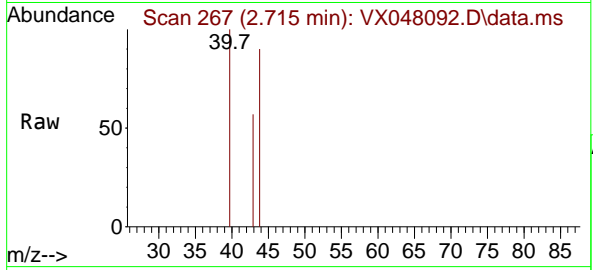




#18
 Methyl Acetate
 Concen: 0.239 ug/l
 RT: 2.715 min Scan# 20
 Delta R.T. 0.012 min
 Lab File: VX048092.D
 Acq: 09 Oct 2025 17:05

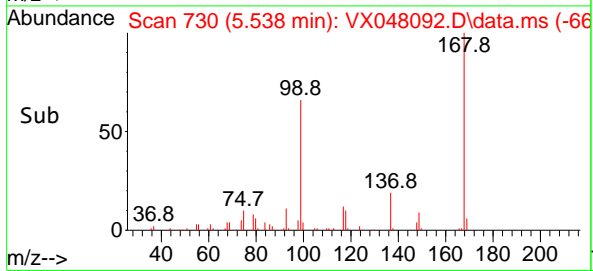
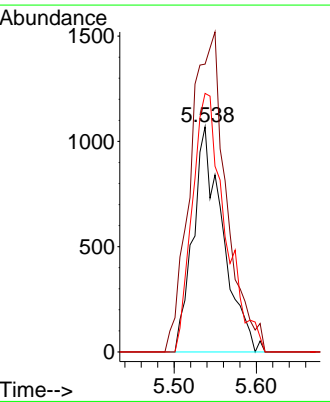
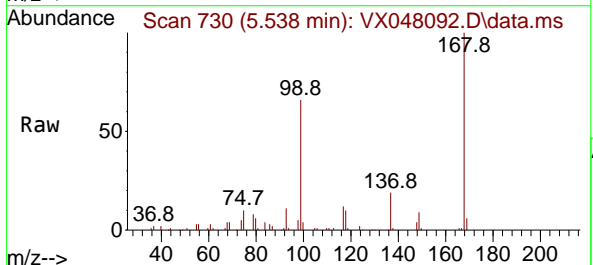
Instrument : MSVOA_X
 ClientSampleId : IBLK

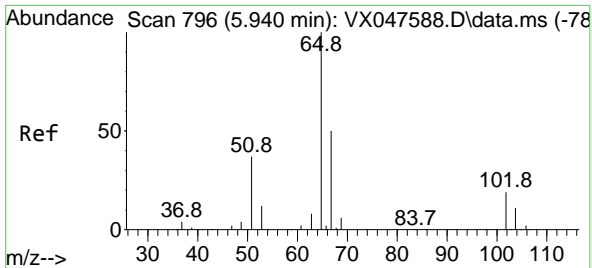
Tgt Ion: 43 Resp: 411
 Ion Ratio Lower Upper
 43 100
 74 0.0 17.4 26.2#



#31
 Cyclohexane
 Concen: 1.142 ug/l
 RT: 5.538 min Scan# 730
 Delta R.T. 0.079 min
 Lab File: VX048092.D
 Acq: 09 Oct 2025 17:05

Tgt Ion: 56 Resp: 2677
 Ion Ratio Lower Upper
 56 100
 69 127.9 23.8 35.8#
 84 114.9 64.6 97.0#

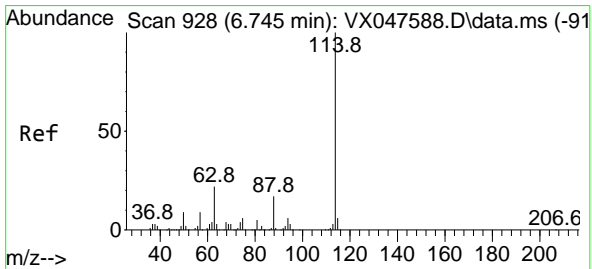
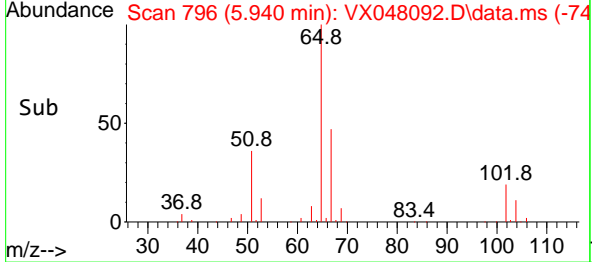
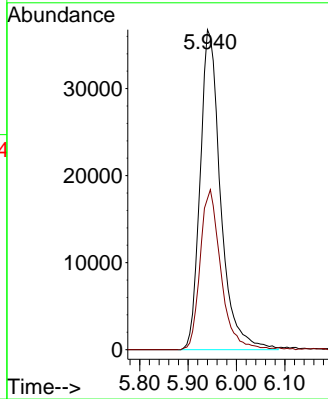
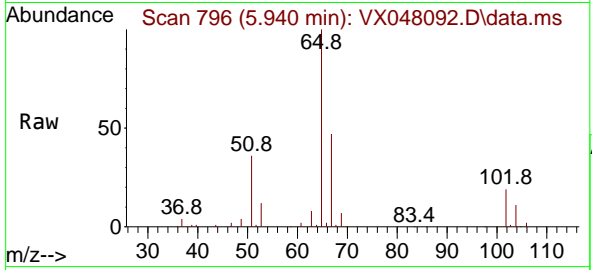




#33
 1,2-Dichloroethane-d4
 Concen: 60.938 ug/l
 RT: 5.940 min Scan# 796
 Delta R.T. -0.000 min
 Lab File: VX048092.D
 Acq: 09 Oct 2025 17:05

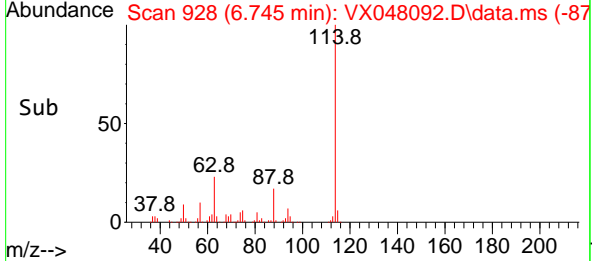
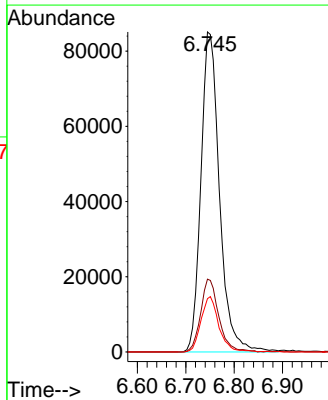
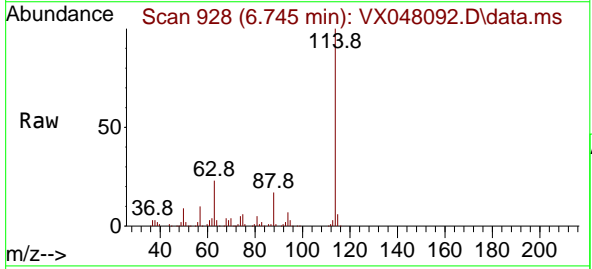
Instrument :
 MSVOA_X
 ClientSampleId :
 IBLK

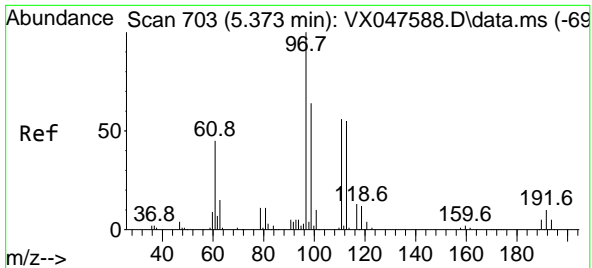
Tgt Ion: 65 Resp: 108096
 Ion Ratio Lower Upper
 65 100
 67 50.7 0.0 103.0



#34
 1,4-Difluorobenzene
 Concen: 50.000 ug/l
 RT: 6.745 min Scan# 928
 Delta R.T. -0.000 min
 Lab File: VX048092.D
 Acq: 09 Oct 2025 17:05

Tgt Ion: 114 Resp: 227134
 Ion Ratio Lower Upper
 114 100
 63 22.8 0.0 44.0
 88 16.7 0.0 34.2

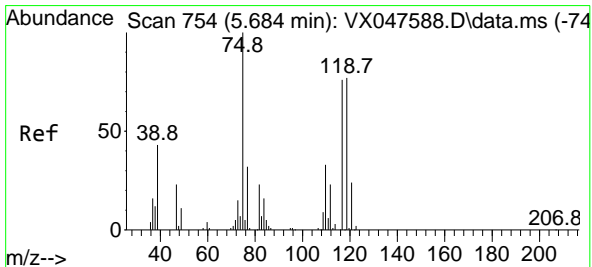
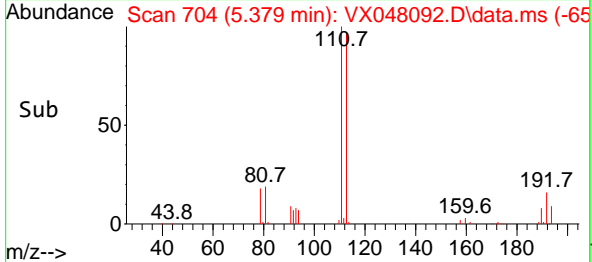
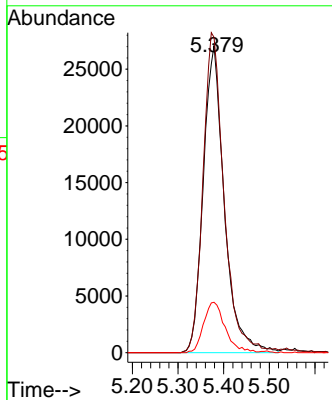
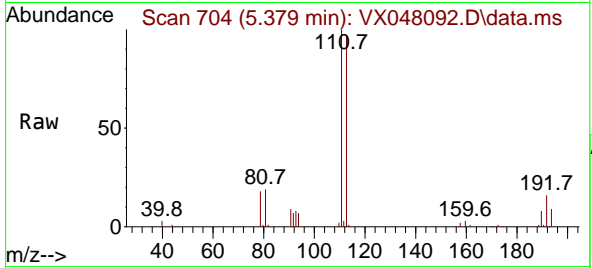




#35
 Dibromofluoromethane
 Concen: 56.882 ug/l
 RT: 5.379 min Scan# 703
 Delta R.T. 0.006 min
 Lab File: VX048092.D
 Acq: 09 Oct 2025 17:05

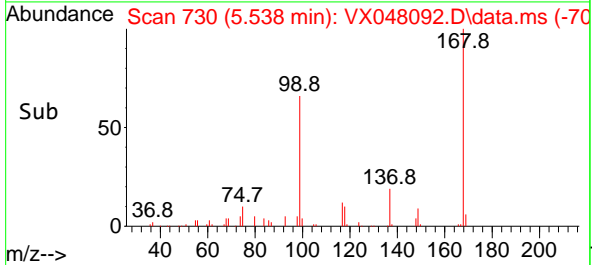
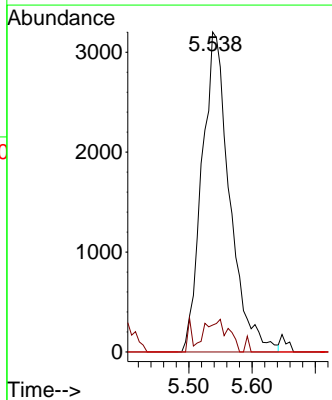
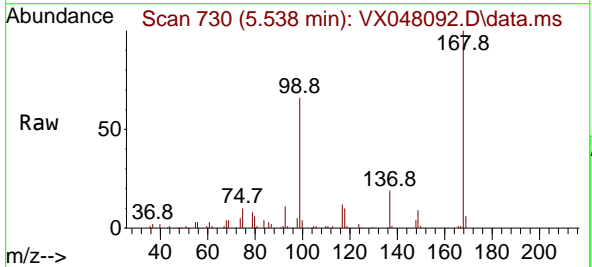
Instrument : MSVOA_X
 ClientSampleId : IBLK

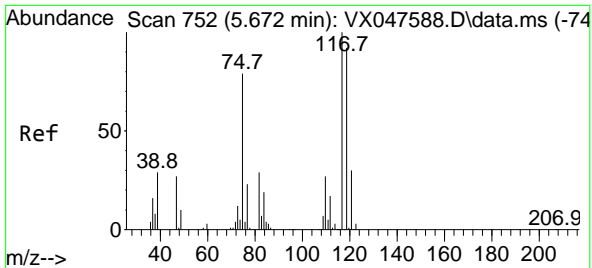
| Tgt Ion | Resp | Lower | Upper |
|---------|-------|-------|-------|
| 113 | 86647 | | |
| 113 | 100 | | |
| 111 | 103.8 | 80.9 | 121.3 |
| 192 | 16.9 | 14.2 | 21.4 |



#36
 1,1-Dichloropropene
 Concen: 4.384 ug/l
 RT: 5.538 min Scan# 730
 Delta R.T. -0.146 min
 Lab File: VX048092.D
 Acq: 09 Oct 2025 17:05

| Tgt Ion | Resp | Lower | Upper |
|---------|------|-------|-------|
| 75 | 9759 | | |
| 75 | 100 | | |
| 110 | 8.4 | 16.7 | 50.1# |
| 77 | 0.0 | 24.3 | 36.5# |

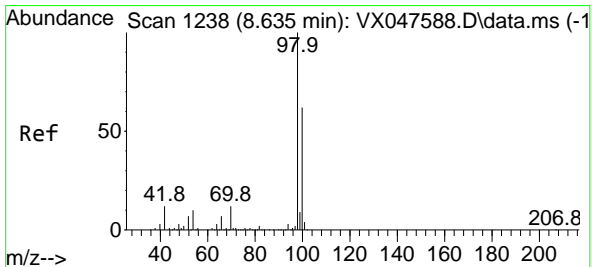
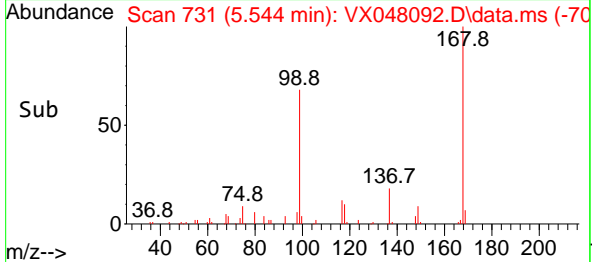
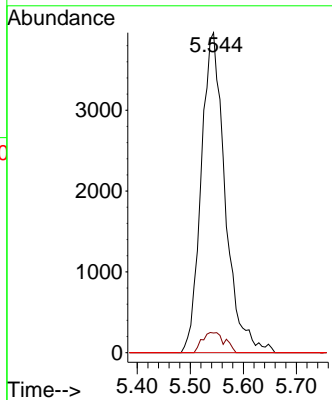
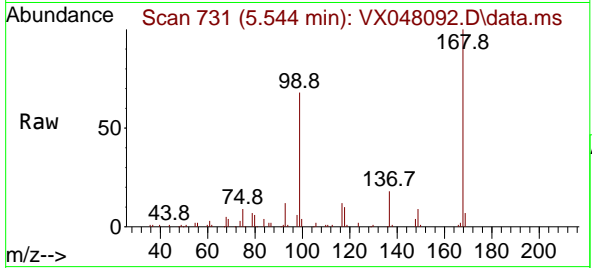




#38
 Carbon Tetrachloride
 Concen: 5.145 ug/l
 RT: 5.544 min Scan# 711
 Delta R.T. -0.128 min
 Lab File: VX048092.D
 Acq: 09 Oct 2025 17:05

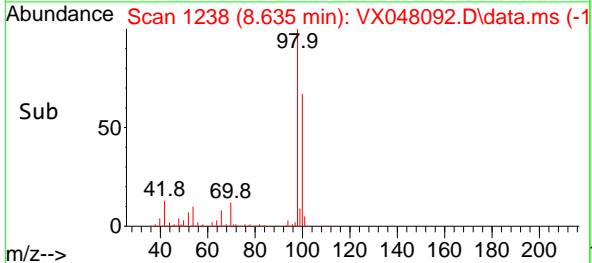
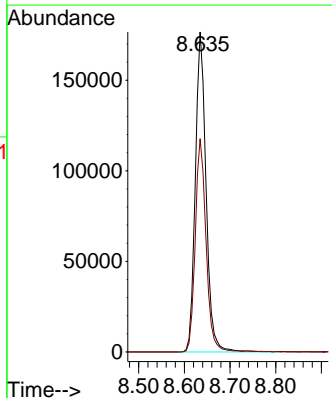
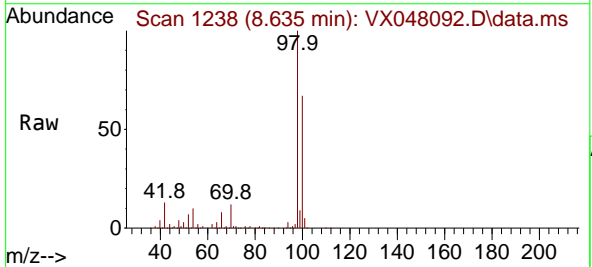
Instrument : MSVOA_X
 ClientSampleId : IBLK

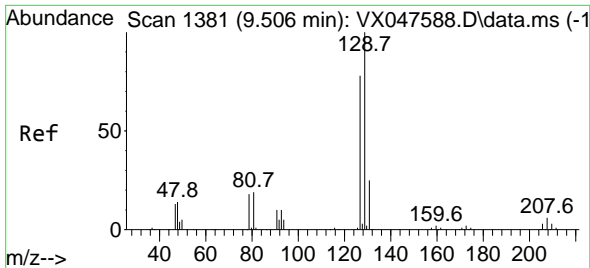
| Tgt Ion | Resp | Lower | Upper |
|---------|-------|-------|--------|
| 117 | 12444 | | |
| 119 | 6.2 | 73.4 | 110.2# |
| 121 | 0.0 | 23.8 | 35.6# |



#50
 Toluene-d8
 Concen: 54.771 ug/l
 RT: 8.635 min Scan# 1238
 Delta R.T. -0.000 min
 Lab File: VX048092.D
 Acq: 09 Oct 2025 17:05

| Tgt Ion | Resp | Lower | Upper |
|---------|--------|-------|-------|
| 98 | 288693 | | |
| 100 | 66.9 | 53.0 | 79.4 |

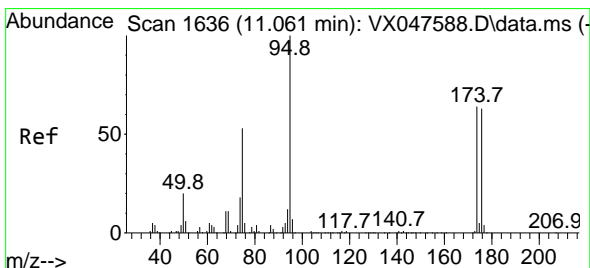
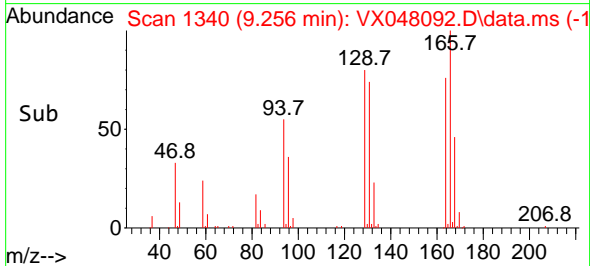
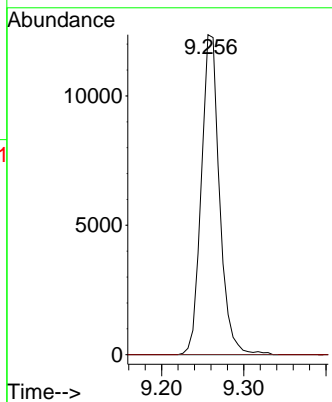
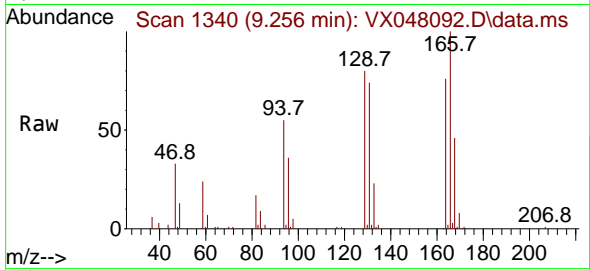




#60
 Dibromochloromethane
 Concen: 10.300 ug/l
 RT: 9.256 min Scan# 11
 Delta R.T. -0.250 min
 Lab File: VX048092.D
 Acq: 09 Oct 2025 17:05

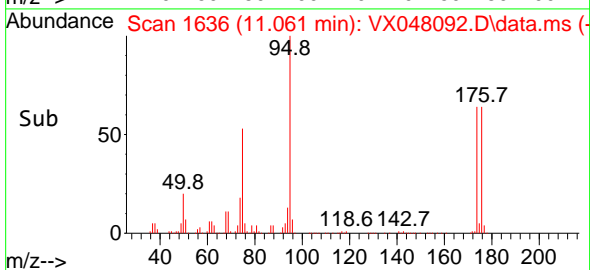
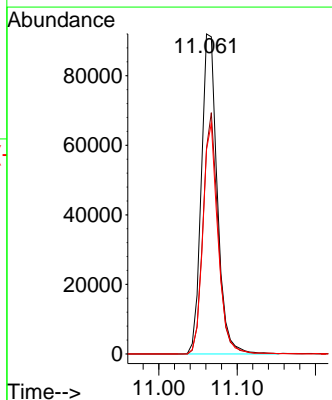
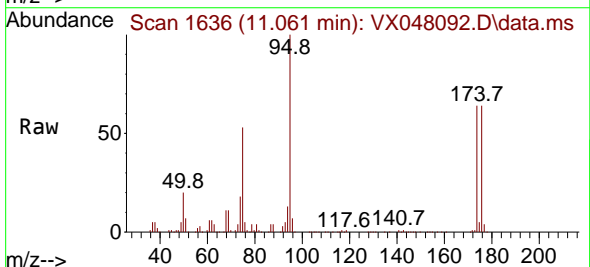
Instrument :
 MSVOA_X
 ClientSampleId :
 IBLK

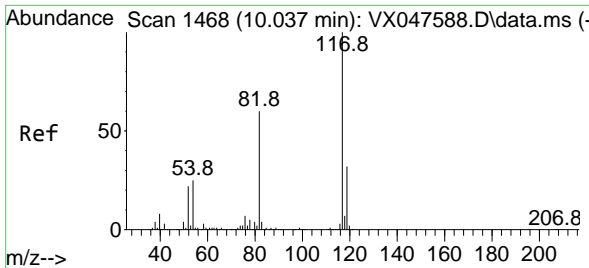
Tgt Ion:129 Resp: 19060
 Ion Ratio Lower Upper
 129 100
 127 0.0 38.4 115.2#



#62
 4-Bromofluorobenzene
 Concen: 64.729 ug/l
 RT: 11.061 min Scan# 1636
 Delta R.T. -0.000 min
 Lab File: VX048092.D
 Acq: 09 Oct 2025 17:05

Tgt Ion: 95 Resp: 129484
 Ion Ratio Lower Upper
 95 100
 174 71.2 0.0 141.6
 176 68.5 0.0 138.4



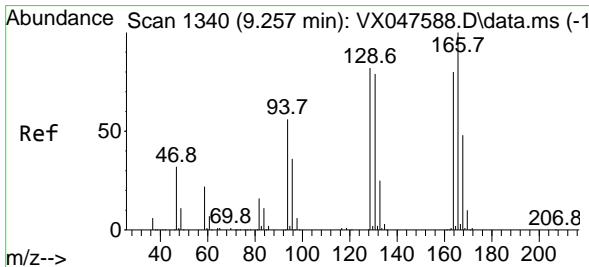
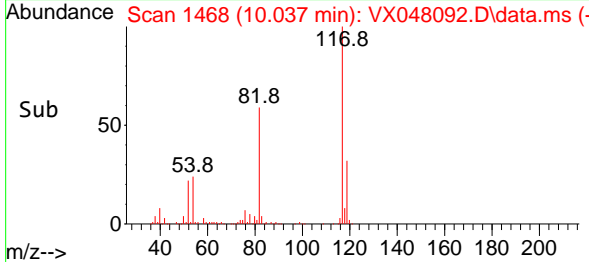
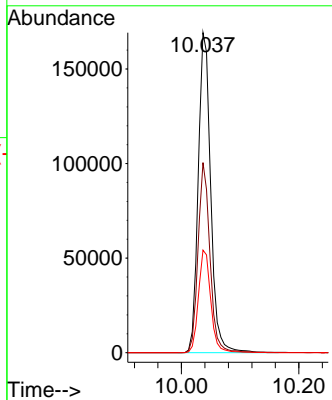
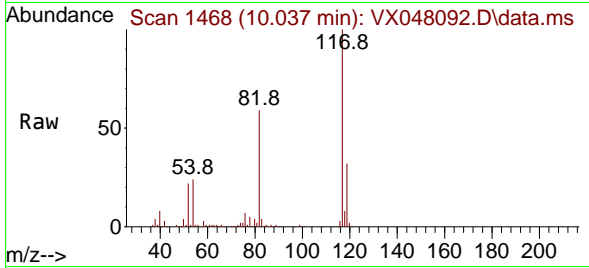


#63
 Chlorobenzene-d5
 Concen: 50.000 ug/l
 RT: 10.037 min Scan# 1468
 Delta R.T. -0.000 min
 Lab File: VX048092.D
 Acq: 09 Oct 2025 17:05

Instrument : MSVOA_X
 ClientSampleId : IBLK

Tgt Ion:117 Resp: 249801

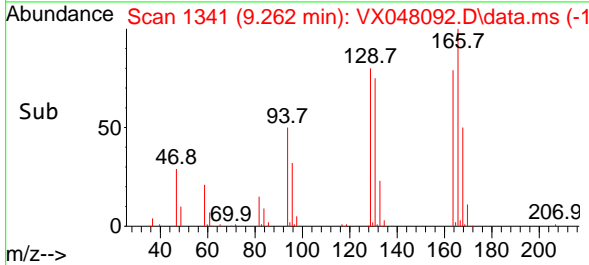
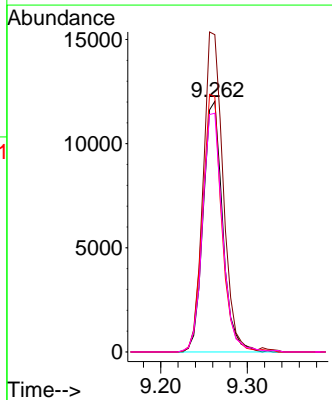
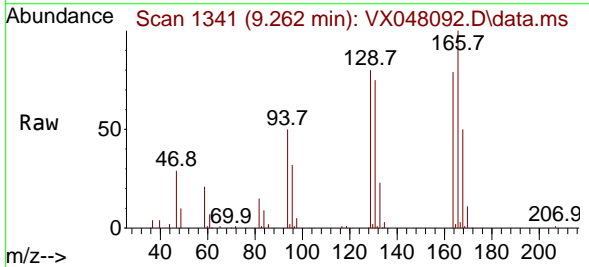
| Ion | Ratio | Lower | Upper |
|-----|-------|-------|-------|
| 117 | 100 | | |
| 82 | 59.4 | 47.8 | 71.6 |
| 119 | 32.1 | 25.2 | 37.8 |

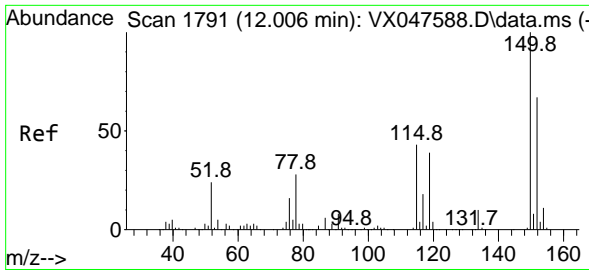


#64
 Tetrachloroethene
 Concen: 11.482 ug/l
 RT: 9.262 min Scan# 1341
 Delta R.T. 0.006 min
 Lab File: VX048092.D
 Acq: 09 Oct 2025 17:05

Tgt Ion:164 Resp: 18698

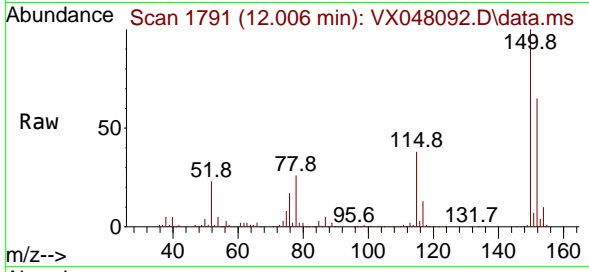
| Ion | Ratio | Lower | Upper |
|-----|-------|-------|-------|
| 164 | 100 | | |
| 166 | 126.7 | 100.2 | 150.2 |
| 129 | 101.9 | 81.8 | 122.6 |
| 131 | 95.3 | 78.6 | 118.0 |



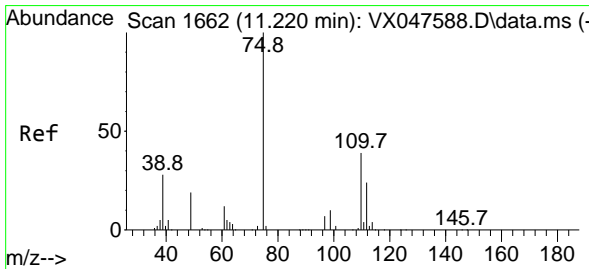
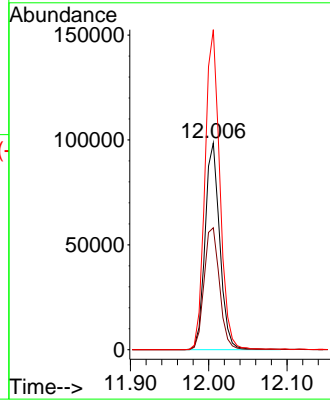
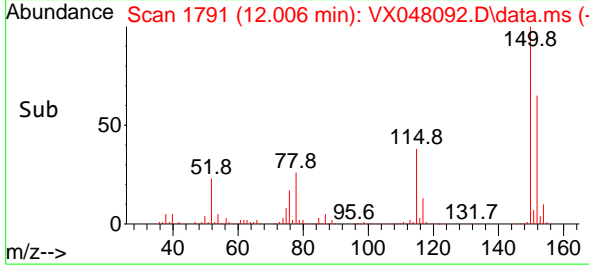


#72
 1,4-Dichlorobenzene-d4
 Concen: 50.000 ug/l
 RT: 12.006 min Scan# 11
 Delta R.T. -0.000 min
 Lab File: VX048092.D
 Acq: 09 Oct 2025 17:05

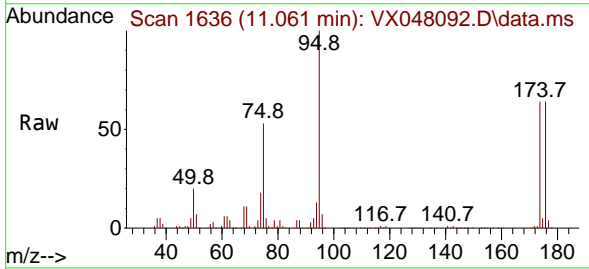
Instrument :
 MSVOA_X
 ClientSampleId :
 IBLK



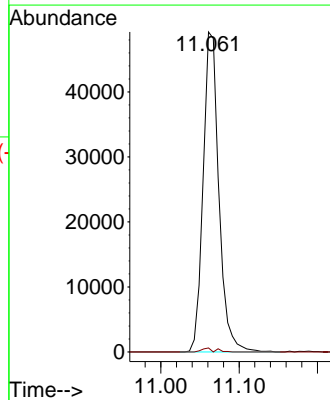
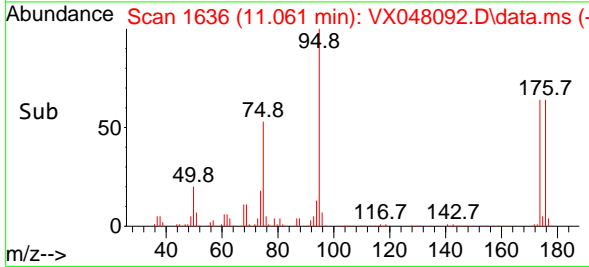
Tgt Ion:152 Resp: 128251
 Ion Ratio Lower Upper
 152 100
 115 62.1 44.9 134.5
 150 156.1 0.0 352.0

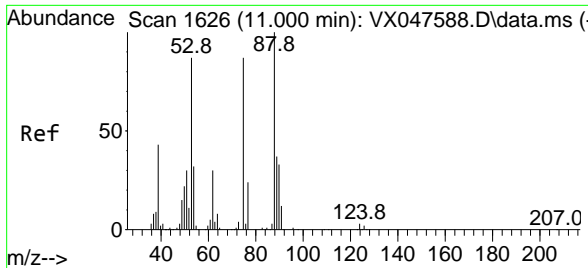


#76
 1,2,3-Trichloropropane
 Concen: 26.458 ug/l
 RT: 11.061 min Scan# 1636
 Delta R.T. -0.159 min
 Lab File: VX048092.D
 Acq: 09 Oct 2025 17:05



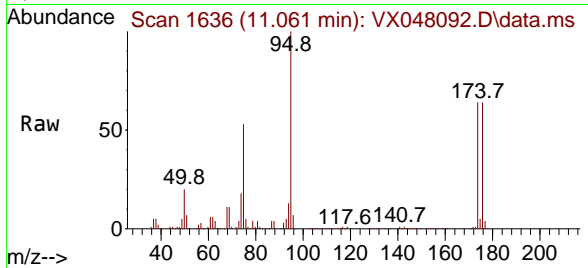
Tgt Ion: 75 Resp: 68702
 Ion Ratio Lower Upper
 75 100
 77 1.0 18.8 56.4#





#81
 trans-1,4-Dichloro-2-butene
 Concen: 67.471 ug/l
 RT: 11.061 min Scan# 1
 Delta R.T. 0.061 min
 Lab File: VX048092.D
 Acq: 09 Oct 2025 17:05

Instrument :
 MSVOA_X
 ClientSampleId :
 IBLK



Tgt Ion: 75 Resp: 68702
 Ion Ratio Lower Upper
 75 100
 53 0.0 83.4 125.2#
 89 0.0 36.3 54.5#

