

Data Path : Z:\voasrv\HPCHEM1\MSVOA_X\Data\VX100925\
 Data File : VX048088.D
 Acq On : 09 Oct 2025 15:42
 Operator : JC/MD
 Sample : IBLK
 Misc : 5.0mL/MSVOA_X/WATER
 ALS Vial : 18 Sample Multiplier: 1

Instrument :
 MSVOA_X
 ClientSampleId :
 IBLK

Quant Time: Oct 10 01:26:31 2025
 Quant Method : Z:\voasrv\HPCHEM1\MSVOA_X\Method\82X091625W.M
 Quant Title : SW846 8260
 QLast Update : Wed Sep 17 06:39:58 2025
 Response via : Initial Calibration

Compound	R.T.	QIon	Response	Conc	Units	Dev(Min)

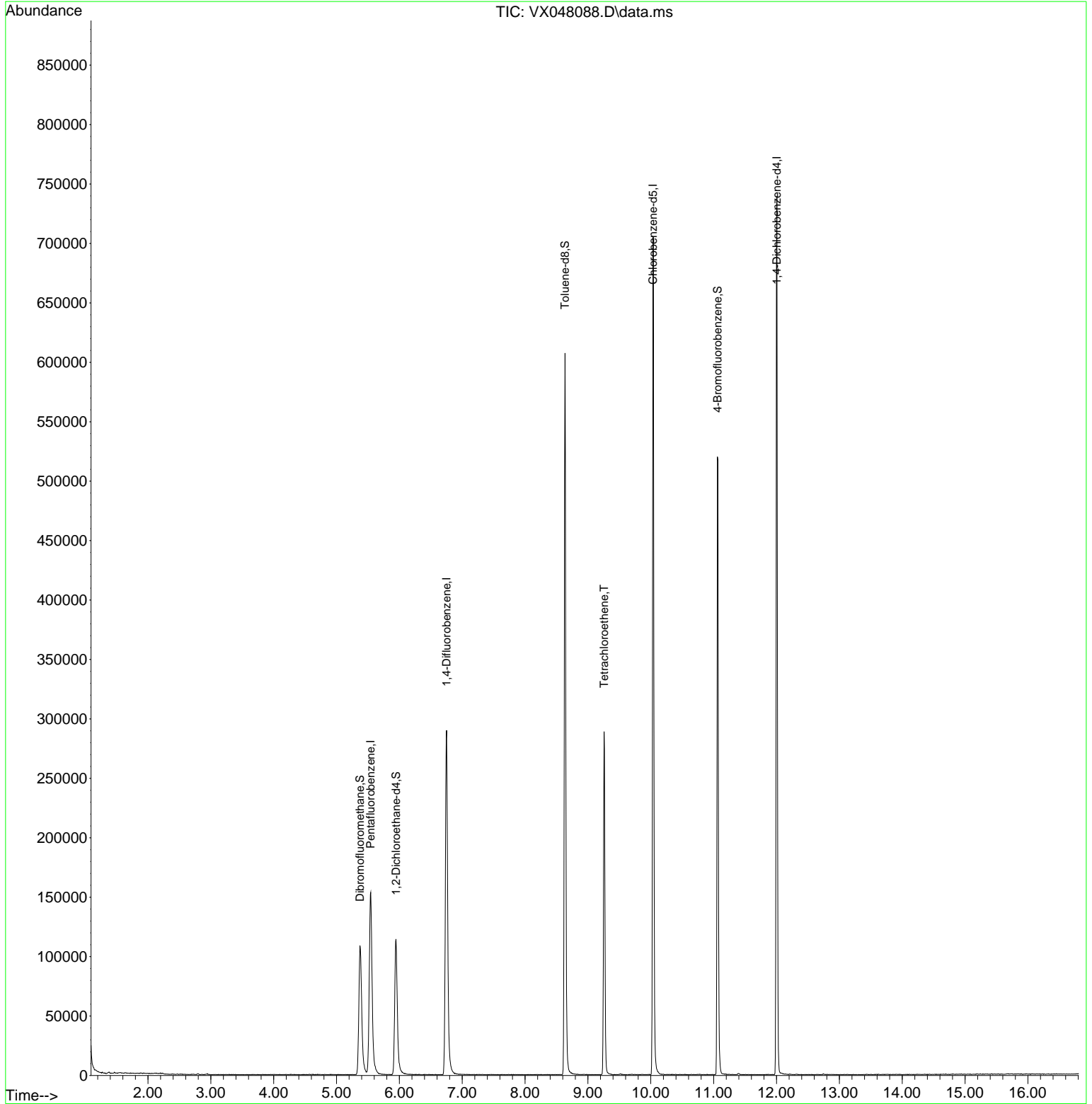
Internal Standards						
1) Pentafluorobenzene	5.544	168	152762	50.000	ug/l	0.00
34) 1,4-Difluorobenzene	6.751	114	315518	50.000	ug/l	0.00
63) Chlorobenzene-d5	10.037	117	318434	50.000	ug/l	0.00
72) 1,4-Dichlorobenzene-d4	12.006	152	155266	50.000	ug/l	0.00
System Monitoring Compounds						
33) 1,2-Dichloroethane-d4	5.946	65	124346	51.138	ug/l	0.00
Spiked Amount	50.000	Range	78 - 117	Recovery	=	102.280%
35) Dibromofluoromethane	5.373	113	105890	50.042	ug/l	0.00
Spiked Amount	50.000	Range	75 - 124	Recovery	=	100.080%
50) Toluene-d8	8.634	98	366109	50.002	ug/l	0.00
Spiked Amount	50.000	Range	92 - 112	Recovery	=	100.000%
62) 4-Bromofluorobenzene	11.061	95	154304	55.529	ug/l	0.00
Spiked Amount	50.000	Range	83 - 123	Recovery	=	111.060%
Target Compounds						
64) Tetrachloroethene	9.256	164	55250	26.616	ug/l	97

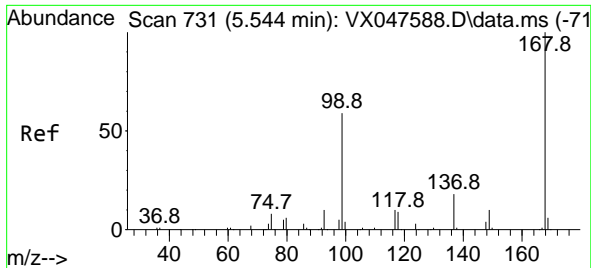
(#) = qualifier out of range (m) = manual integration (+) = signals summed

Data Path : Z:\voasrv\HPCHEM1\MSVOA_X\Data\VX100925\
 Data File : VX048088.D
 Acq On : 09 Oct 2025 15:42
 Operator : JC/MD
 Sample : IBLK
 Misc : 5.0mL/MSVOA_X/WATER
 ALS Vial : 18 Sample Multiplier: 1

Instrument :
 MSVOA_X
 ClientSampleId :
 IBLK

Quant Time: Oct 10 01:26:31 2025
 Quant Method : Z:\voasrv\HPCHEM1\MSVOA_X\Method\82X091625W.M
 Quant Title : SW846 8260
 QLast Update : Wed Sep 17 06:39:58 2025
 Response via : Initial Calibration

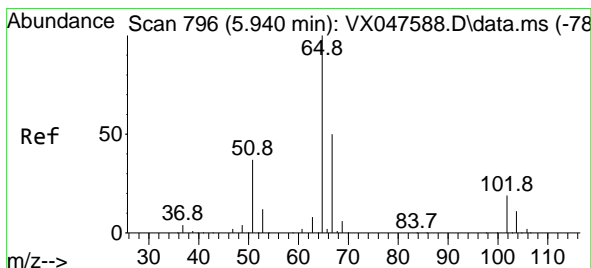
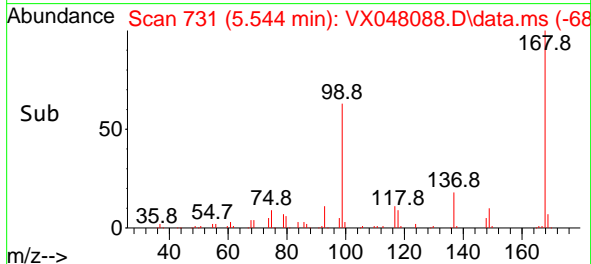
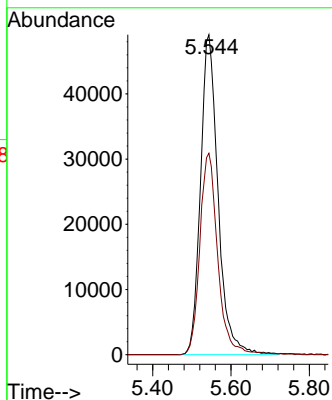
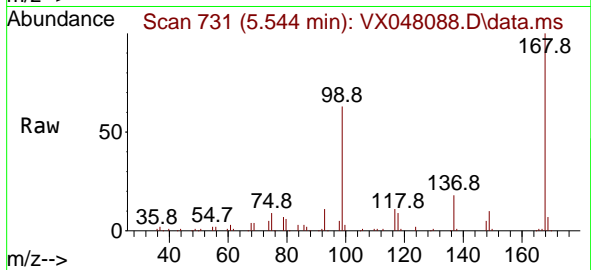




#1
 Pentafluorobenzene
 Concen: 50.000 ug/l
 RT: 5.544 min Scan# 71
 Delta R.T. -0.000 min
 Lab File: VX048088.D
 Acq: 09 Oct 2025 15:42

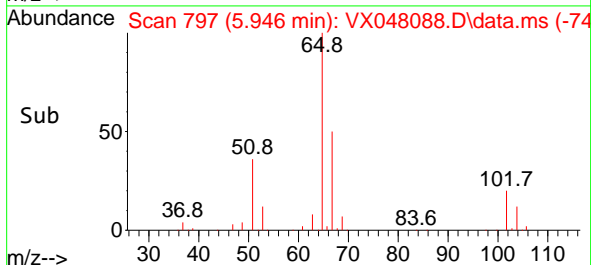
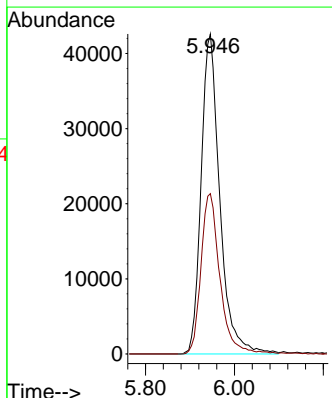
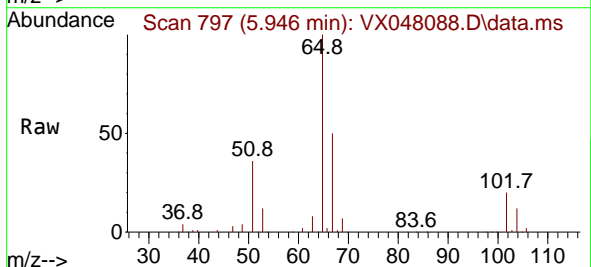
Instrument :
 MSVOA_X
 ClientSampleId :
 IBLK

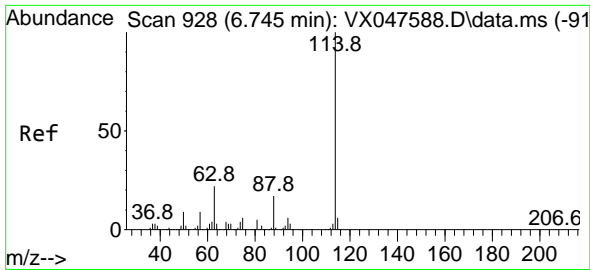
Tgt Ion:168 Resp: 152762
 Ion Ratio Lower Upper
 168 100
 99 62.9 48.8 73.2



#33
 1,2-Dichloroethane-d4
 Concen: 51.138 ug/l
 RT: 5.946 min Scan# 797
 Delta R.T. 0.006 min
 Lab File: VX048088.D
 Acq: 09 Oct 2025 15:42

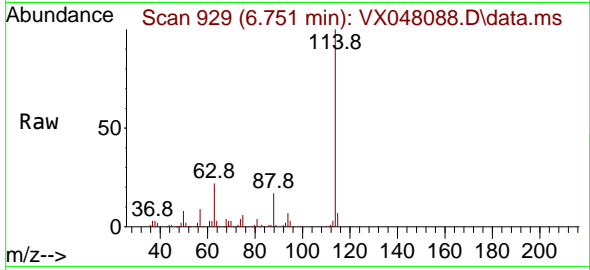
Tgt Ion: 65 Resp: 124346
 Ion Ratio Lower Upper
 65 100
 67 50.8 0.0 103.0



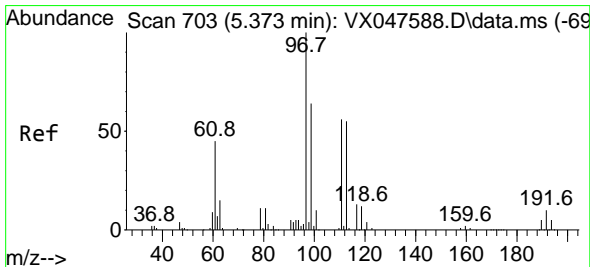
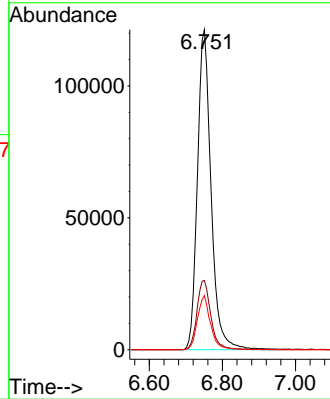
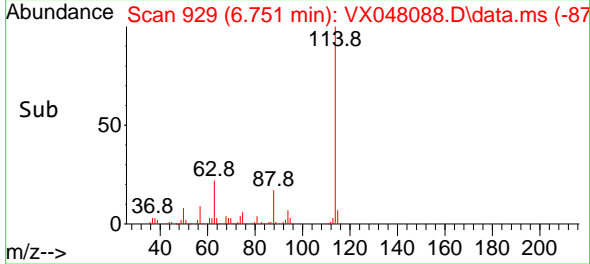


#34
 1,4-Difluorobenzene
 Concen: 50.000 ug/l
 RT: 6.751 min Scan# 91
 Delta R.T. 0.006 min
 Lab File: VX048088.D
 Acq: 09 Oct 2025 15:42

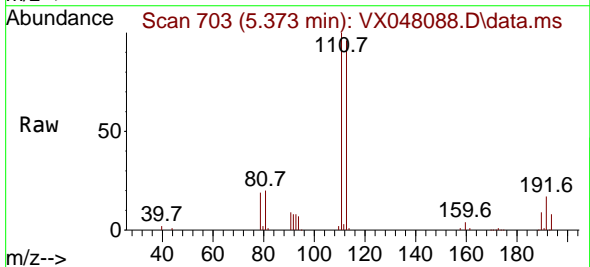
Instrument :
 MSVOA_X
 ClientSampleId :
 IBLK



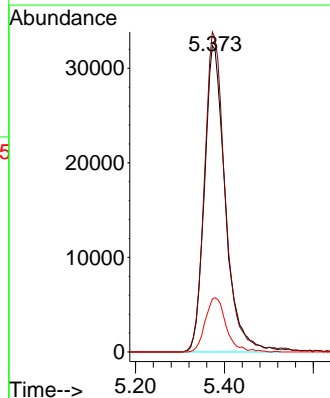
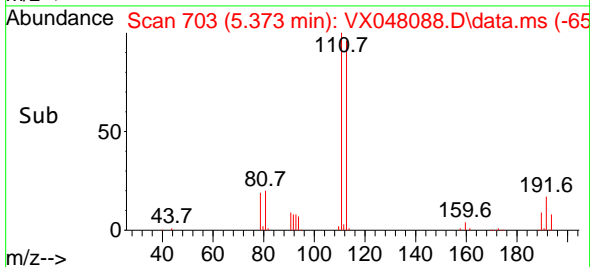
Tgt Ion:114 Resp: 315518
 Ion Ratio Lower Upper
 114 100
 63 21.7 0.0 44.0
 88 16.9 0.0 34.2

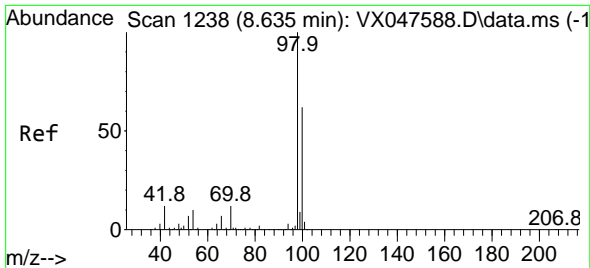


#35
 Dibromofluoromethane
 Concen: 50.042 ug/l
 RT: 5.373 min Scan# 703
 Delta R.T. -0.000 min
 Lab File: VX048088.D
 Acq: 09 Oct 2025 15:42



Tgt Ion:113 Resp: 105890
 Ion Ratio Lower Upper
 113 100
 111 103.1 80.9 121.3
 192 17.7 14.2 21.4

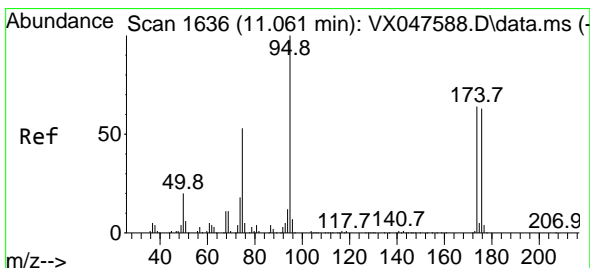
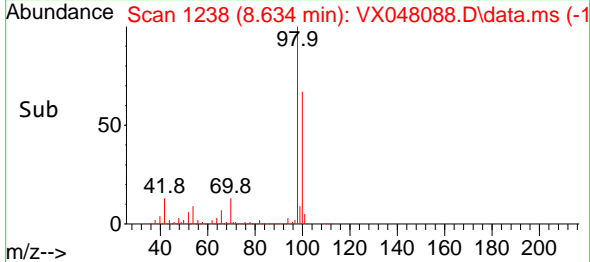
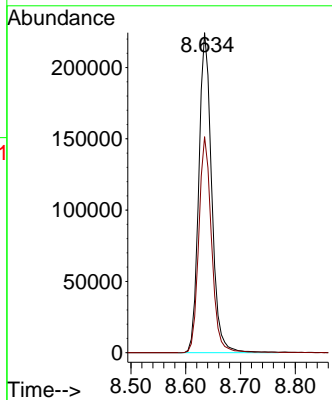
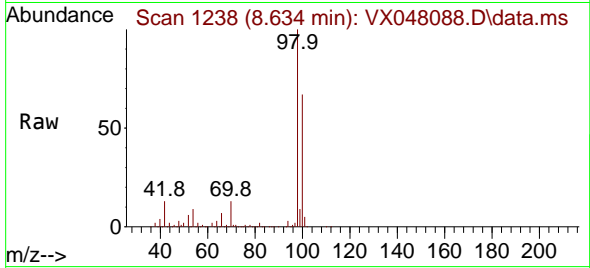




#50
 Toluene-d8
 Concen: 50.002 ug/l
 RT: 8.634 min Scan# 11
 Delta R.T. -0.000 min
 Lab File: VX048088.D
 Acq: 09 Oct 2025 15:42

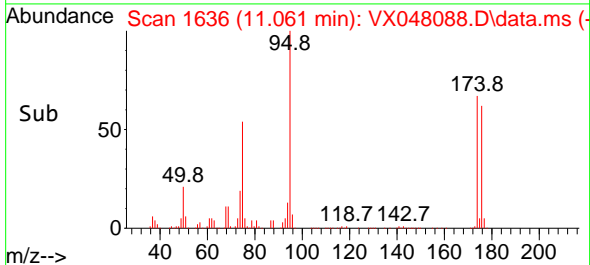
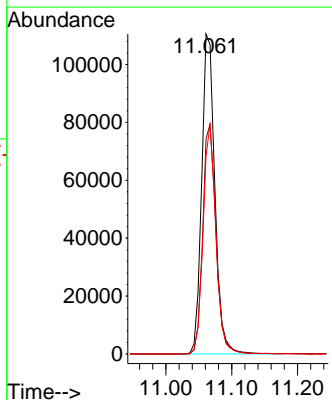
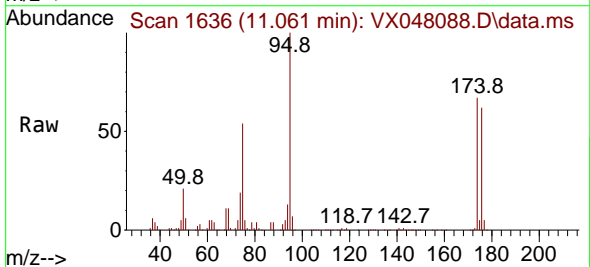
Instrument :
 MSVOA_X
 ClientSampleId :
 IBLK

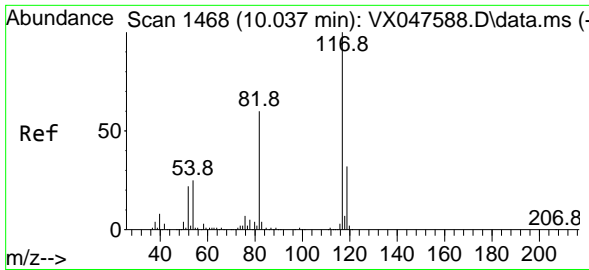
Tgt Ion: 98 Resp: 366109
 Ion Ratio Lower Upper
 98 100
 100 67.0 53.0 79.4



#62
 4-Bromofluorobenzene
 Concen: 55.529 ug/l
 RT: 11.061 min Scan# 1636
 Delta R.T. -0.000 min
 Lab File: VX048088.D
 Acq: 09 Oct 2025 15:42

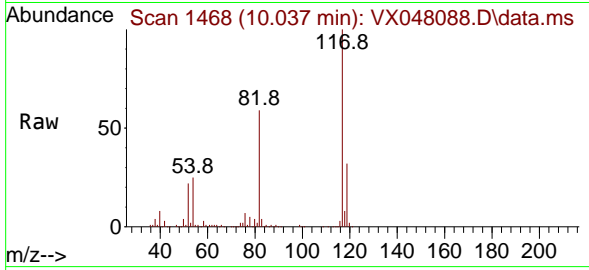
Tgt Ion: 95 Resp: 154304
 Ion Ratio Lower Upper
 95 100
 174 72.3 0.0 141.6
 176 69.5 0.0 138.4



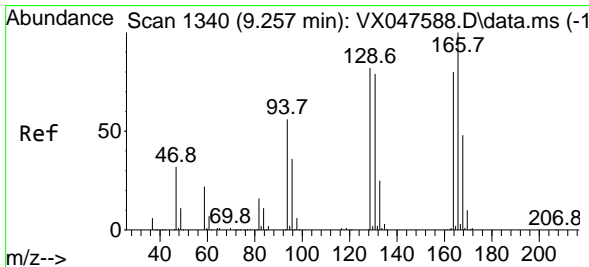
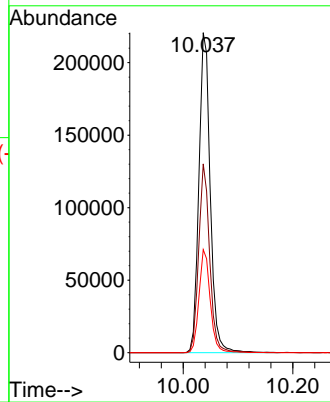
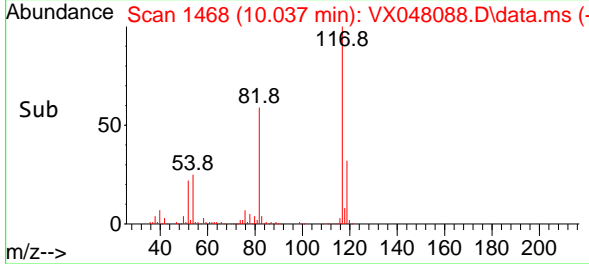


#63
 Chlorobenzene-d5
 Concen: 50.000 ug/l
 RT: 10.037 min Scan# 1468
 Delta R.T. -0.000 min
 Lab File: VX048088.D
 Acq: 09 Oct 2025 15:42

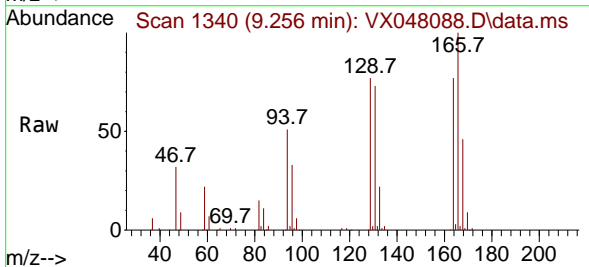
Instrument : MSVOA_X
 ClientSampleId : IBLK



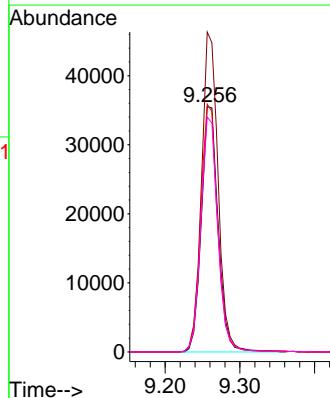
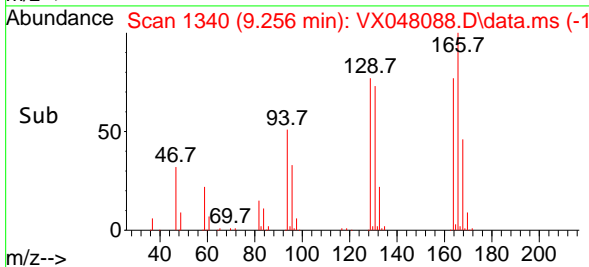
Tgt Ion:117 Resp: 318434
 Ion Ratio Lower Upper
 117 100
 82 59.0 47.8 71.6
 119 32.2 25.2 37.8

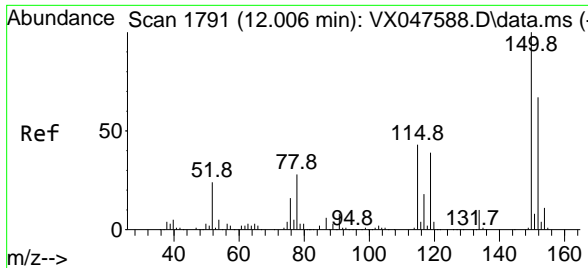


#64
 Tetrachloroethene
 Concen: 26.616 ug/l
 RT: 9.256 min Scan# 1340
 Delta R.T. -0.000 min
 Lab File: VX048088.D
 Acq: 09 Oct 2025 15:42



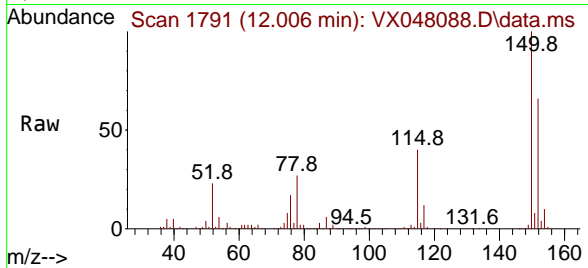
Tgt Ion:164 Resp: 55250
 Ion Ratio Lower Upper
 164 100
 166 130.4 100.2 150.2
 129 101.0 81.8 122.6
 131 95.7 78.6 118.0





#72
 1,4-Dichlorobenzene-d4
 Concen: 50.000 ug/l
 RT: 12.006 min Scan# 1
 Delta R.T. -0.000 min
 Lab File: VX048088.D
 Acq: 09 Oct 2025 15:42

Instrument :
 MSVOA_X
 ClientSampleId :
 IBLK



Tgt Ion:152 Resp: 155266

Ion	Ratio	Lower	Upper
152	100		
115	61.4	44.9	134.5
150	155.3	0.0	352.0

