

Data Path : Z:\voasrv\HPCHEM1\MSVOA_X\Data\VX100925\
 Data File : VX048073.D
 Acq On : 09 Oct 2025 09:35
 Operator : JC/MD
 Sample : VX1009MBL01
 Misc : 5.00g/10mL/100uL/5.00mL/MSVOA_X/MEOH
 ALS Vial : 3 Sample Multiplier: 1

Instrument :
 MSVOA_X
 ClientSampleId :
 VX1009MBL01

Integration Parameters: RTEINT.P

Integrator: RTE
 Smoothing : ON Filtering: 5
 Sampling : 1 Min Area: 3 % of largest Peak
 Start Thrs: 0.2 Max Peaks: 100
 Stop Thrs : 0 Peak Location: TOP

If leading or trailing edge < 100 prefer < Baseline drop else tangent >
 Peak separation: 5

Method : Z:\voasrv\HPCHEM1\MSVOA_X\Method\82X091625W.M
 Title : SW846 8260

Signal : TIC: VX048073.D\data.ms

peak #	R.T. min	first scan	max scan	last scan	PK TY	peak height	corr. area	corr. % max.	% of total
1	5.367	691	702	719	rBV4	77655	254603	35.43%	6.363%
2	5.531	719	729	749	rVB	105772	325696	45.32%	8.139%
3	5.934	785	795	819	rBV	81998	247532	34.45%	6.186%
4	6.739	917	927	951	rBV	192089	509060	70.84%	12.722%
5	8.635	1230	1238	1259	rBV	414211	718613	100.00%	17.959%
6	10.037	1462	1468	1486	rBV	472988	690241	96.05%	17.250%
7	11.061	1631	1636	1647	rBV	369914	526877	73.32%	13.167%
8	12.006	1785	1791	1803	rBV	497131	670494	93.30%	16.756%
9	12.317	1838	1842	1847	rVB2	10705	13373	1.86%	0.334%
10	13.573	2042	2048	2053	rBV3	6776	9427	1.31%	0.236%
11	13.701	2065	2069	2074	rVB4	14720	18828	2.62%	0.471%
12	13.762	2074	2079	2084	rBV	5807	7368	1.03%	0.184%
13	13.945	2104	2109	2113	rBV2	6998	9314	1.30%	0.233%

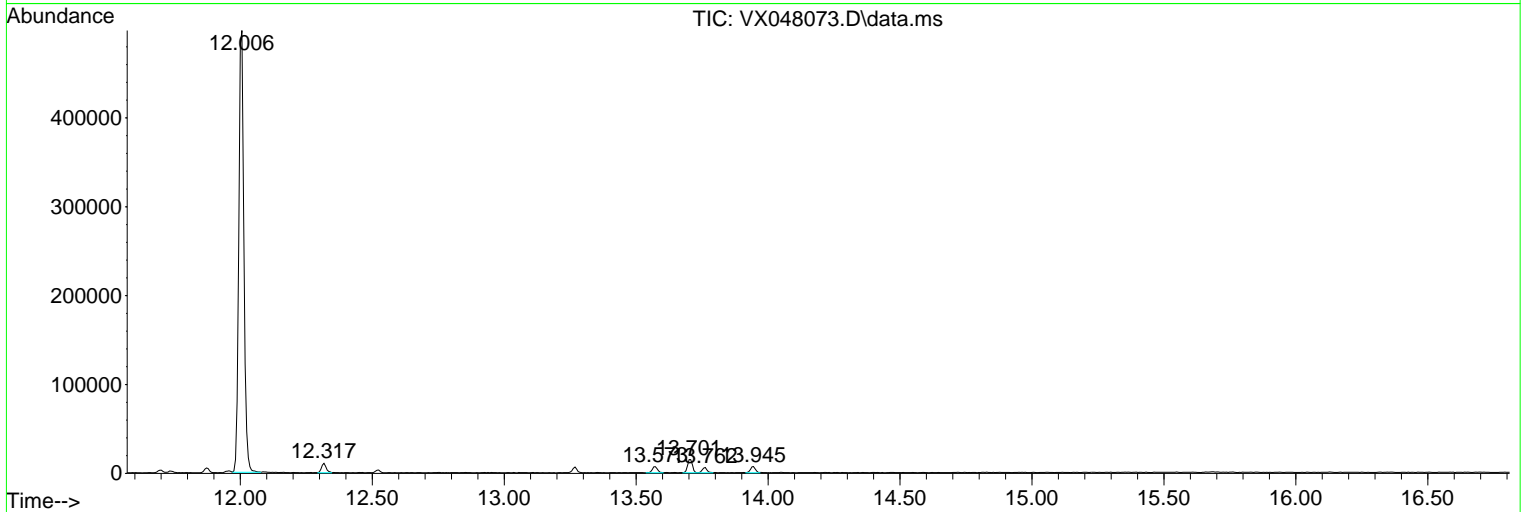
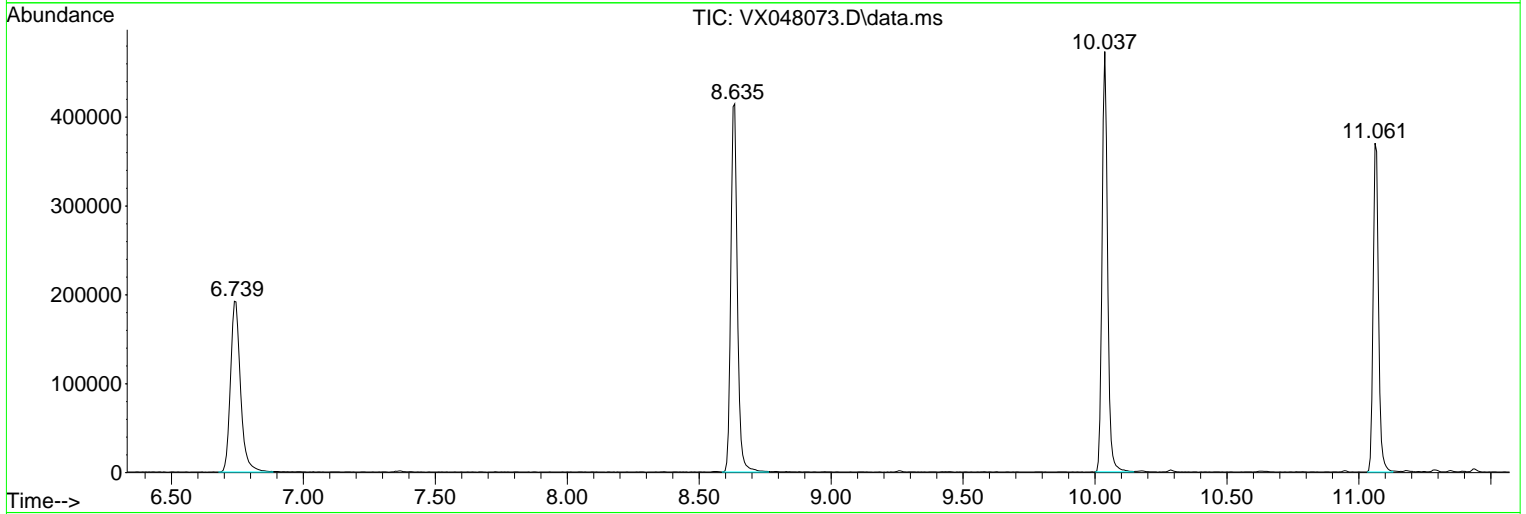
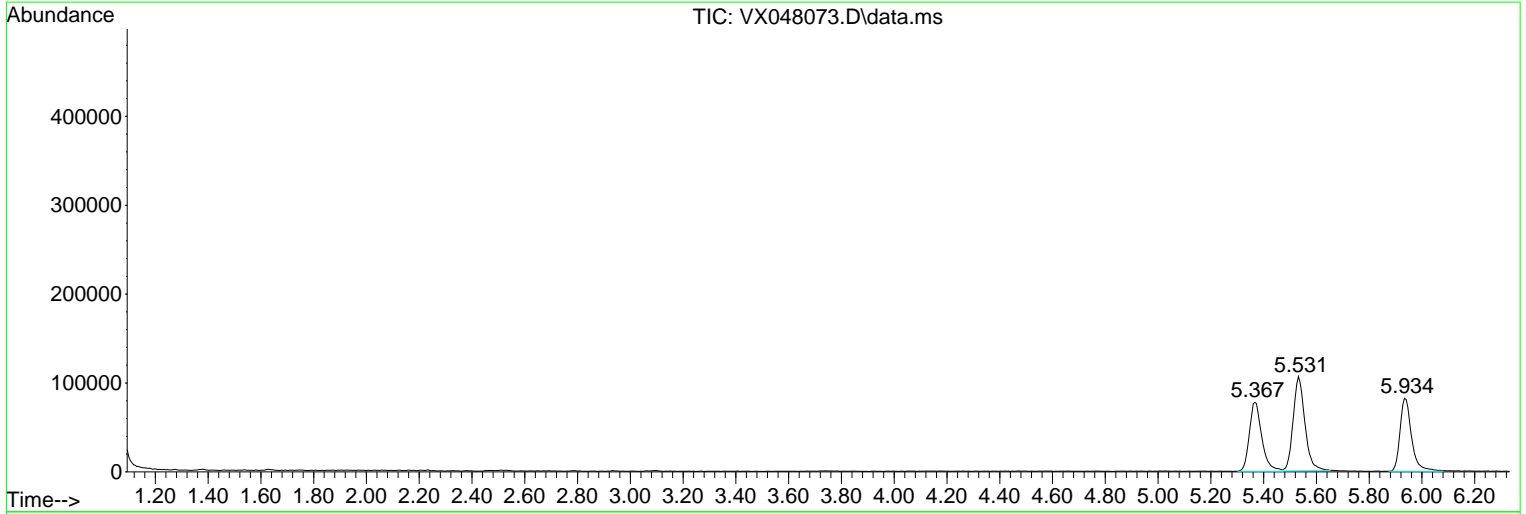
Sum of corrected areas: 4001426

Data Path : Z:\voasrv\HPCHEM1\MSVOA_X\Data\VX100925\
 Data File : VX048073.D
 Acq On : 09 Oct 2025 09:35
 Operator : JC/MD
 Sample : VX1009MBL01
 Misc : 5.00g/10mL/100uL/5.00mL/MSVOA_X/MEOH
 ALS Vial : 3 Sample Multiplier: 1

Instrument :
 MSVOA_X
 ClientSampleId :
 VX1009MBL01

Quant Method : Z:\voasrv\HPCHEM1\MSVOA_X\Method\82X091625W.M
 Quant Title : SW846 8260

TIC Library : C:\Database\NIST20.L
 TIC Integration Parameters: LSCINT.P



Library Search Compound Report

Data Path : Z:\voasrv\HPCHEM1\MSVOA_X\Data\VX100925\
Data File : VX048073.D
Acq On : 09 Oct 2025 09:35
Operator : JC/MD
Sample : VX1009MBL01
Misc : 5.00g/10mL/100uL/5.00mL/MSVOA_X/MEOH
ALS Vial : 3 Sample Multiplier: 1

Instrument :
MSVOA_X
ClientSampleId :
VX1009MBL01

Quant Method : Z:\voasrv\HPCHEM1\MSVOA_X\Method\82X091625W.M
Quant Title : SW846 8260

TIC Library : C:\Database\NIST20.L
TIC Integration Parameters: LSCINT.P

No Library Search Compounds Detected

Data Path : Z:\voasrv\HPCHEM1\MSVOA_X\Data\VX100925\
Data File : VX048073.D
Acq On : 09 Oct 2025 09:35
Operator : JC/MD
Sample : VX1009MBL01
Misc : 5.00g/10mL/100uL/5.00mL/MSVOA_X/MEOH
ALS Vial : 3 Sample Multiplier: 1

Instrument :
MSVOA_X
ClientSampleId :
VX1009MBL01

Quant Method : Z:\voasrv\HPCHEM1\MSVOA_X\Method\82X091625W.M
Quant Title : SW846 8260

TIC Library : C:\Database\NIST20.L
TIC Integration Parameters: LSCINT.P

TIC Top Hit name	RT	EstConc	Units	Response	--Internal Standard--			
					#	RT	Resp	Conc
