

Data Path : Z:\voasrv\HPCHEM1\MSVOA\_X\Data\VX100925\  
 Data File : VX048074.D  
 Acq On : 09 Oct 2025 09:55  
 Operator : JC/MD  
 Sample : VX1009WBL01  
 Misc : 5.0mL/MSVOA\_X/WATER  
 ALS Vial : 4 Sample Multiplier: 1

Instrument :  
 MSVOA\_X  
 ClientSampleId :  
 VX1009WBL01

Integration Parameters: RTEINT.P  
 Integrator: RTE  
 Smoothing : ON Filtering: 5  
 Sampling : 1 Min Area: 3 % of largest Peak  
 Start Thrs: 0.2 Max Peaks: 100  
 Stop Thrs : 0 Peak Location: TOP

If leading or trailing edge < 100 prefer < Baseline drop else tangent >  
 Peak separation: 5

Method : Z:\voasrv\HPCHEM1\MSVOA\_X\Method\82X091625W.M  
 Title : SW846 8260

Signal : TIC: VX048074.D\data.ms

| peak # | R.T. min | first scan | max scan | last scan | PK TY | peak height | corr. area | corr. % max. | % of total |
|--------|----------|------------|----------|-----------|-------|-------------|------------|--------------|------------|
| 1      | 5.373    | 693        | 703      | 720       | rBV2  | 104769      | 336449     | 33.49%       | 6.114%     |
| 2      | 5.537    | 720        | 730      | 751       | rVB   | 141102      | 444263     | 44.22%       | 8.073%     |
| 3      | 5.946    | 783        | 797      | 821       | rBV   | 117274      | 348713     | 34.71%       | 6.336%     |
| 4      | 6.745    | 916        | 928      | 948       | rBV   | 273660      | 717511     | 71.41%       | 13.038%    |
| 5      | 8.634    | 1231       | 1238     | 1254      | rBV   | 578366      | 937185     | 93.28%       | 17.030%    |
| 6      | 10.037   | 1462       | 1468     | 1489      | rBV   | 688029      | 986145     | 98.15%       | 17.919%    |
| 7      | 11.067   | 1631       | 1637     | 1651      | rBV   | 515977      | 728296     | 72.49%       | 13.234%    |
| 8      | 12.006   | 1785       | 1791     | 1802      | rBV   | 757598      | 1004714    | 100.00%      | 18.257%    |

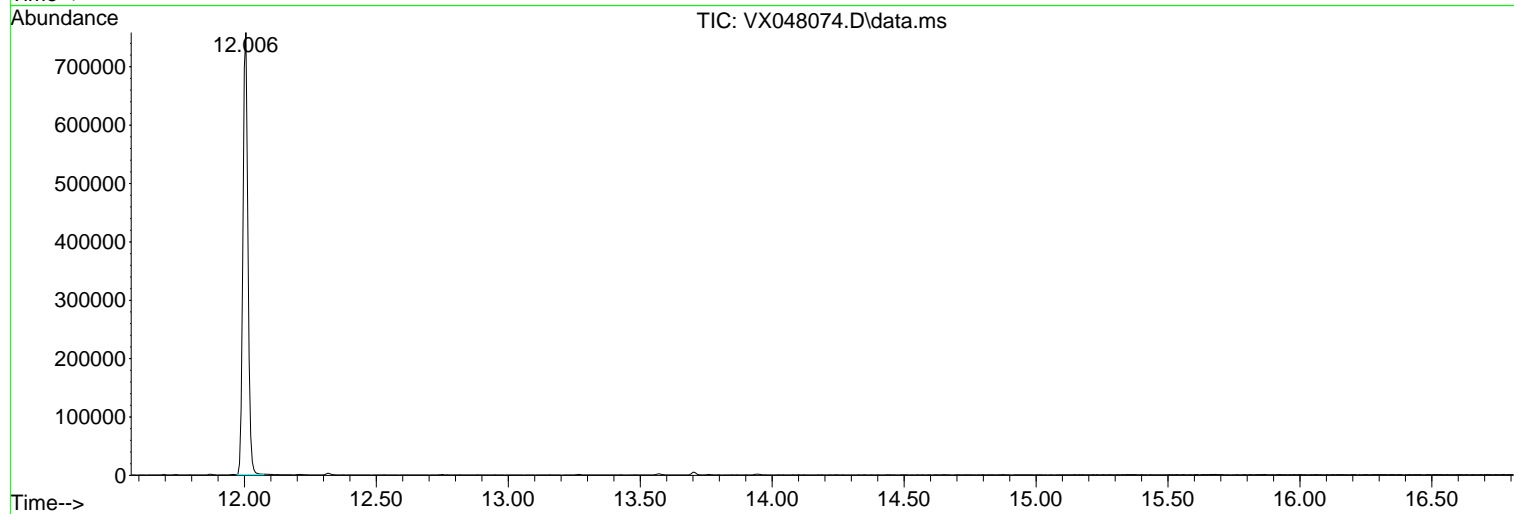
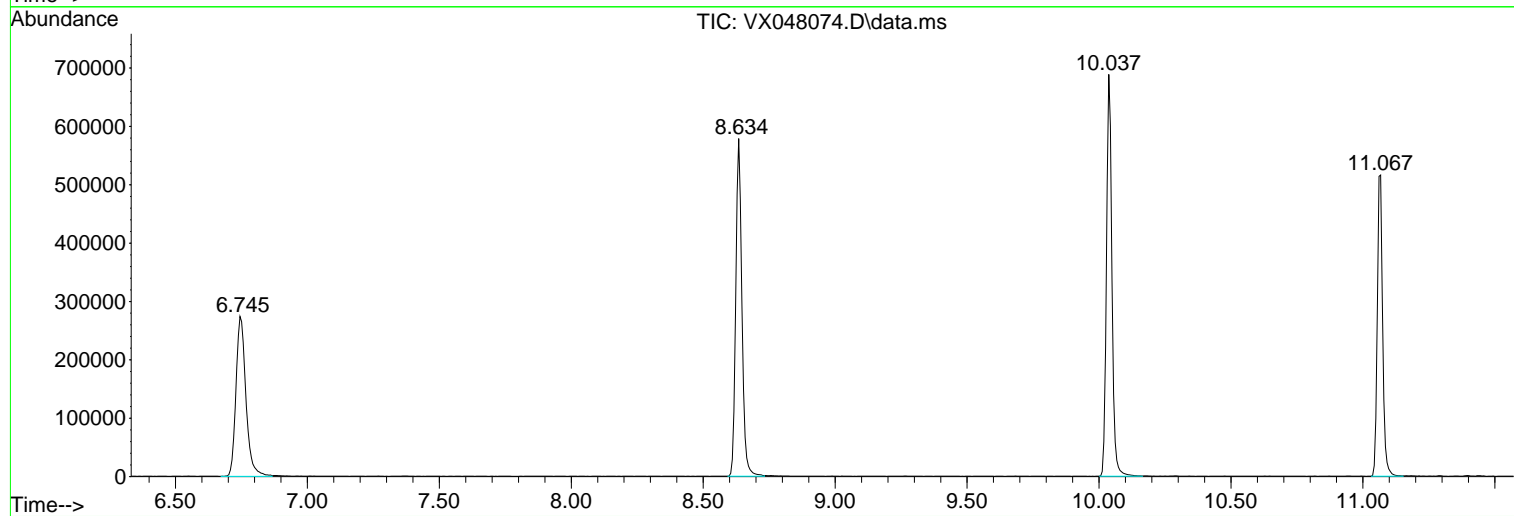
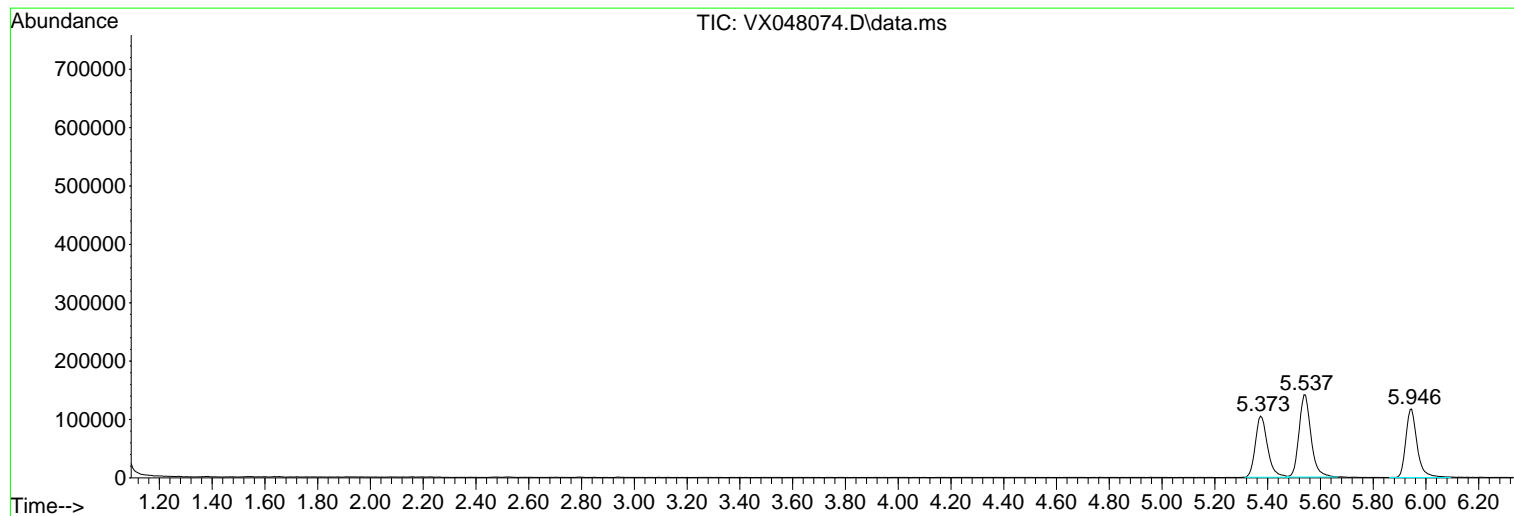
Sum of corrected areas: 5503276

Data Path : Z:\voasrv\HPCHEM1\MSVOA\_X\Data\VX100925\  
Data File : VX048074.D  
Acq On : 09 Oct 2025 09:55  
Operator : JC/MD  
Sample : VX1009WBL01  
Misc : 5.0mL/MSVOA\_X/WATER  
ALS Vial : 4 Sample Multiplier: 1

Instrument :  
MSVOA\_X  
ClientSampleId :  
VX1009WBL01

Quant Method : Z:\voasrv\HPCHEM1\MSVOA\_X\Method\82X091625W.M  
Quant Title : SW846 8260

TIC Library : C:\Database\NIST20.L  
TIC Integration Parameters: LSCINT.P



Library Search Compound Report

Data Path : Z:\voasrv\HPCHEM1\MSVOA\_X\Data\VX100925\  
Data File : VX048074.D  
Acq On : 09 Oct 2025 09:55  
Operator : JC/MD  
Sample : VX1009WBL01  
Misc : 5.0mL/MSVOA\_X/WATER  
ALS Vial : 4 Sample Multiplier: 1

Instrument :  
MSVOA\_X  
ClientSampleId :  
VX1009WBL01

Quant Method : Z:\voasrv\HPCHEM1\MSVOA\_X\Method\82X091625W.M  
Quant Title : SW846 8260

TIC Library : C:\Database\NIST20.L  
TIC Integration Parameters: LSCINT.P

No Library Search Compounds Detected

\*\*\*\*\*

Data Path : Z:\voasrv\HPCHEM1\MSVOA\_X\Data\VX100925\  
Data File : VX048074.D  
Acq On : 09 Oct 2025 09:55  
Operator : JC/MD  
Sample : VX1009WBL01  
Misc : 5.0mL/MSVOA\_X/WATER  
ALS Vial : 4 Sample Multiplier: 1

Instrument :  
MSVOA\_X  
ClientSampleId :  
VX1009WBL01

Quant Method : Z:\voasrv\HPCHEM1\MSVOA\_X\Method\82X091625W.M  
Quant Title : SW846 8260

TIC Library : C:\Database\NIST20.L  
TIC Integration Parameters: LSCINT.P

| TIC Top Hit name | RT | EstConc | Units | Response | --Internal Standard-- |    |           |
|------------------|----|---------|-------|----------|-----------------------|----|-----------|
|                  |    |         |       |          | #                     | RT | Resp Conc |

---