

Data Path : Z:\voasrv\HPCHEM1\MSVOA\_X\Data\VX100925\  
 Data File : VX048076.D  
 Acq On : 09 Oct 2025 11:29  
 Operator : JC/MD  
 Sample : Q3318-04 50X  
 Misc : 5.0mL/MSVOA\_X/WATER  
 ALS Vial : 6 Sample Multiplier: 1

Instrument :  
 MSVOA\_X  
 ClientSampleId :  
 3436

Integration Parameters: RTEINT.P  
 Integrator: RTE  
 Smoothing : ON Filtering: 5  
 Sampling : 1 Min Area: 3 % of largest Peak  
 Start Thrs: 0.2 Max Peaks: 100  
 Stop Thrs : 0 Peak Location: TOP

If leading or trailing edge < 100 prefer < Baseline drop else tangent >  
 Peak separation: 5

Method : Z:\voasrv\HPCHEM1\MSVOA\_X\Method\82X091625W.M  
 Title : SW846 8260

Signal : TIC: VX048076.D\data.ms

| peak # | R.T. min | first scan | max scan | last scan | PK TY | peak height | corr. area | corr. % max. | % of total |
|--------|----------|------------|----------|-----------|-------|-------------|------------|--------------|------------|
| 1      | 5.367    | 689        | 702      | 717       | rBV4  | 77851       | 250422     | 33.28%       | 5.248%     |
| 2      | 5.531    | 719        | 729      | 754       | rVB   | 117220      | 366106     | 48.66%       | 7.672%     |
| 3      | 5.934    | 785        | 795      | 817       | rBV   | 83437       | 248980     | 33.09%       | 5.217%     |
| 4      | 6.739    | 918        | 927      | 953       | rBV   | 215473      | 563330     | 74.88%       | 11.805%    |
| 5      | 8.628    | 1230       | 1237     | 1256      | rBV   | 422366      | 712563     | 94.71%       | 14.932%    |
| 6      | 9.421    | 1360       | 1367     | 1372      | rBV2  | 4598        | 7874       | 1.05%        | 0.165%     |
| 7      | 10.037   | 1462       | 1468     | 1483      | rBV   | 509576      | 752357     | 100.00%      | 15.766%    |
| 8      | 11.061   | 1631       | 1636     | 1648      | rBV   | 393567      | 534967     | 71.11%       | 11.210%    |
| 9      | 11.457   | 1699       | 1701     | 1706      | rVB   | 8045        | 9658       | 1.28%        | 0.202%     |
| 10     | 11.732   | 1743       | 1746     | 1756      | rVB   | 8627        | 13229      | 1.76%        | 0.277%     |
| 11     | 12.000   | 1785       | 1790     | 1797      | rBV   | 548498      | 740616     | 98.44%       | 15.520%    |
| 12     | 12.067   | 1797       | 1801     | 1808      | rVB5  | 5785        | 12767      | 1.70%        | 0.268%     |
| 13     | 12.225   | 1819       | 1827     | 1829      | rBV6  | 5765        | 9859       | 1.31%        | 0.207%     |
| 14     | 12.311   | 1835       | 1841     | 1847      | rVB6  | 10152       | 20113      | 2.67%        | 0.421%     |
| 15     | 12.402   | 1849       | 1856     | 1861      | rBV2  | 15890       | 21545      | 2.86%        | 0.451%     |
| 16     | 12.536   | 1869       | 1878     | 1881      | rBV6  | 4550        | 11753      | 1.56%        | 0.246%     |
| 17     | 12.841   | 1924       | 1928     | 1940      | rBV5  | 18959       | 40455      | 5.38%        | 0.848%     |
| 18     | 12.951   | 1940       | 1946     | 1953      | rVB5  | 9208        | 17865      | 2.37%        | 0.374%     |
| 19     | 13.024   | 1953       | 1958     | 1960      | rBV4  | 5333        | 7882       | 1.05%        | 0.165%     |
| 20     | 13.085   | 1964       | 1968     | 1969      | rVV2  | 18533       | 21682      | 2.88%        | 0.454%     |
| 21     | 13.109   | 1969       | 1972     | 1983      | rVV3  | 32618       | 77418      | 10.29%       | 1.622%     |
| 22     | 13.195   | 1983       | 1986     | 1991      | rVV2  | 21658       | 33800      | 4.49%        | 0.708%     |
| 23     | 13.250   | 1991       | 1995     | 1996      | rVV   | 20081       | 25933      | 3.45%        | 0.543%     |
| 24     | 13.274   | 1996       | 1999     | 2003      | rVB4  | 20422       | 29209      | 3.88%        | 0.612%     |
| 25     | 13.402   | 2016       | 2020     | 2029      | rVB4  | 25139       | 42225      | 5.61%        | 0.885%     |
| 26     | 13.567   | 2043       | 2047     | 2052      | rBV6  | 10152       | 15271      | 2.03%        | 0.320%     |
| 27     | 13.707   | 2066       | 2070     | 2075      | rVV7  | 12135       | 18928      | 2.52%        | 0.397%     |
| 28     | 13.756   | 2075       | 2078     | 2081      | rVV3  | 5800        | 9042       | 1.20%        | 0.189%     |
| 29     | 13.829   | 2084       | 2090     | 2095      | rBV5  | 8929        | 17409      | 2.31%        | 0.365%     |
| 30     | 13.902   | 2100       | 2102     | 2106      | rVV4  | 7579        | 12180      | 1.62%        | 0.255%     |
| 31     | 14.018   | 2118       | 2121     | 2124      | rVB2  | 17773       | 18209      | 2.42%        | 0.382%     |
| 32     | 14.207   | 2145       | 2152     | 2157      | rVB4  | 18505       | 30348      | 4.03%        | 0.636%     |
| 33     | 14.457   | 2189       | 2193     | 2202      | rVB7  | 11170       | 20457      | 2.72%        | 0.429%     |
| 34     | 14.597   | 2212       | 2216     | 2222      | rVV4  | 14466       | 26500      | 3.52%        | 0.555%     |
| 35     | 14.652   | 2222       | 2225     | 2230      | rVB2  | 7424        | 10115      | 1.34%        | 0.212%     |
| 36     | 14.731   | 2236       | 2238     | 2241      | rVB2  | 9524        | 9718       | 1.29%        | 0.204%     |

Data Path : Z:\voasrv\HPCHEM1\MSVOA\_X\Data\VX100925\  
Data File : VX048076.D  
Acq On : 09 Oct 2025 11:29  
Operator : JC/MD  
Sample : Q3318-04 50X  
Misc : 5.0mL/MSVOA\_X/WATER  
ALS Vial : 6 Sample Multiplier: 1

Instrument :  
MSVOA\_X  
ClientSampleId :  
3436

Integration Parameters: RTEINT.P  
Integrator: RTE  
Smoothing : ON Filtering: 5  
Sampling : 1 Min Area: 3 % of largest Peak  
Start Thrs: 0.2 Max Peaks: 100  
Stop Thrs : 0 Peak Location: TOP

If leading or trailing edge < 100 prefer < Baseline drop else tangent >  
Peak separation: 5

Method : Z:\voasrv\HPCHEM1\MSVOA\_X\Method\82X091625W.M  
Title : SW846 8260

|    |        |      |      |      |      |      |       |       |        |
|----|--------|------|------|------|------|------|-------|-------|--------|
| 37 | 15.158 | 2304 | 2308 | 2315 | rBV7 | 4942 | 11240 | 1.49% | 0.236% |
|----|--------|------|------|------|------|------|-------|-------|--------|

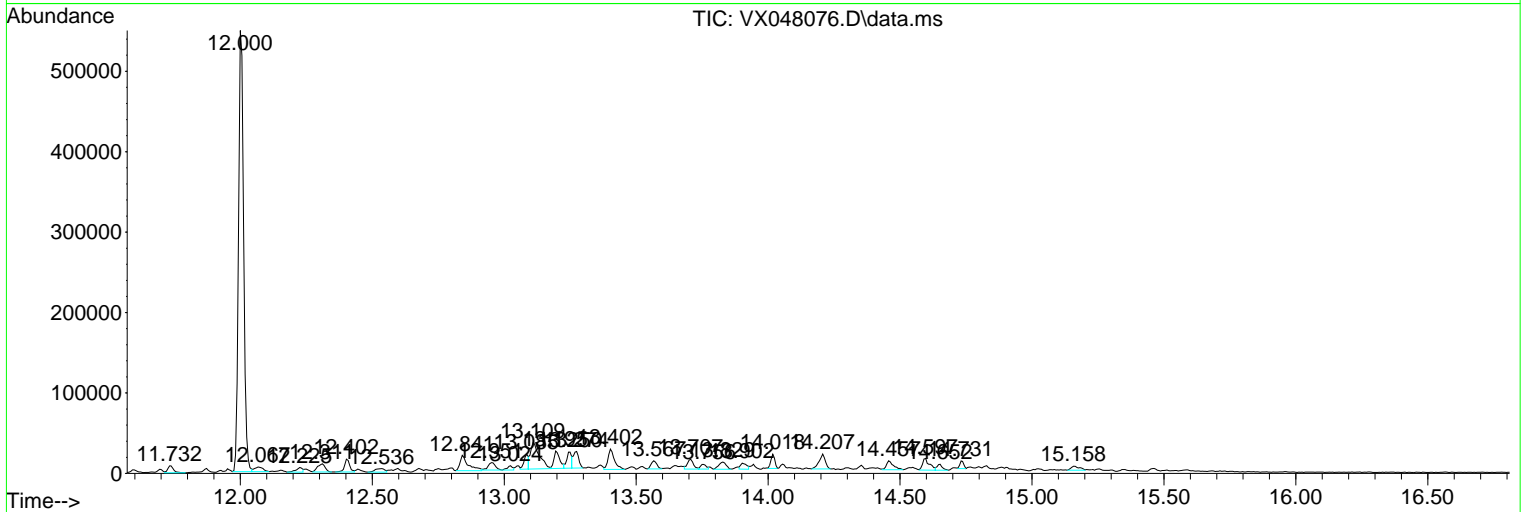
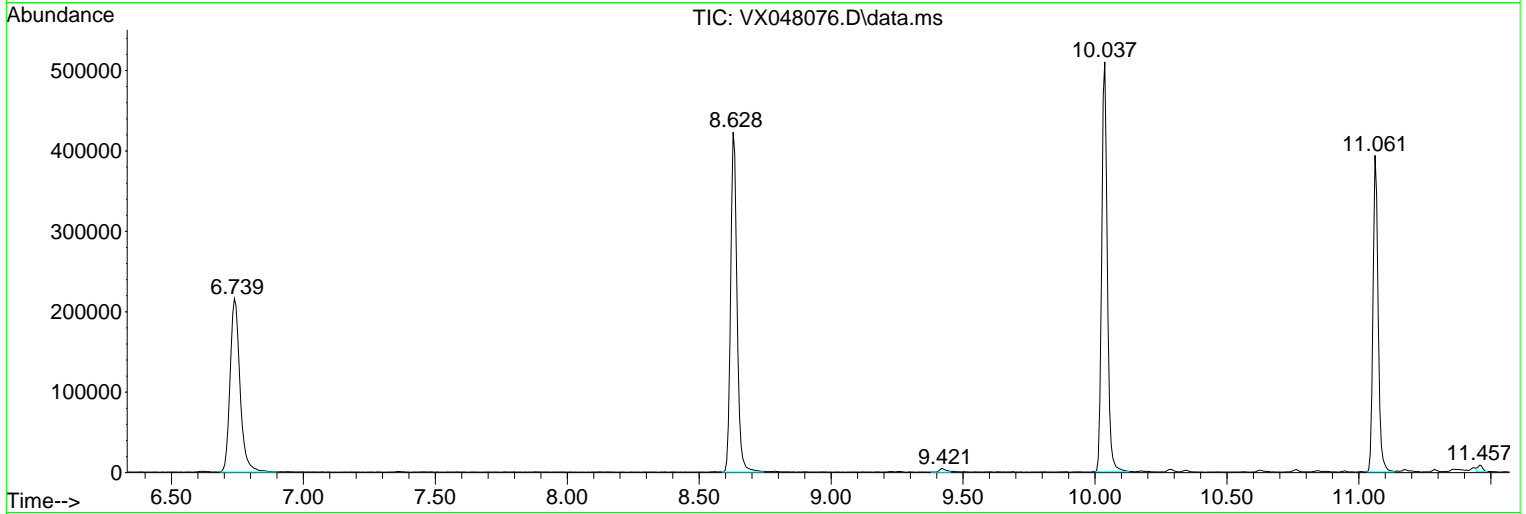
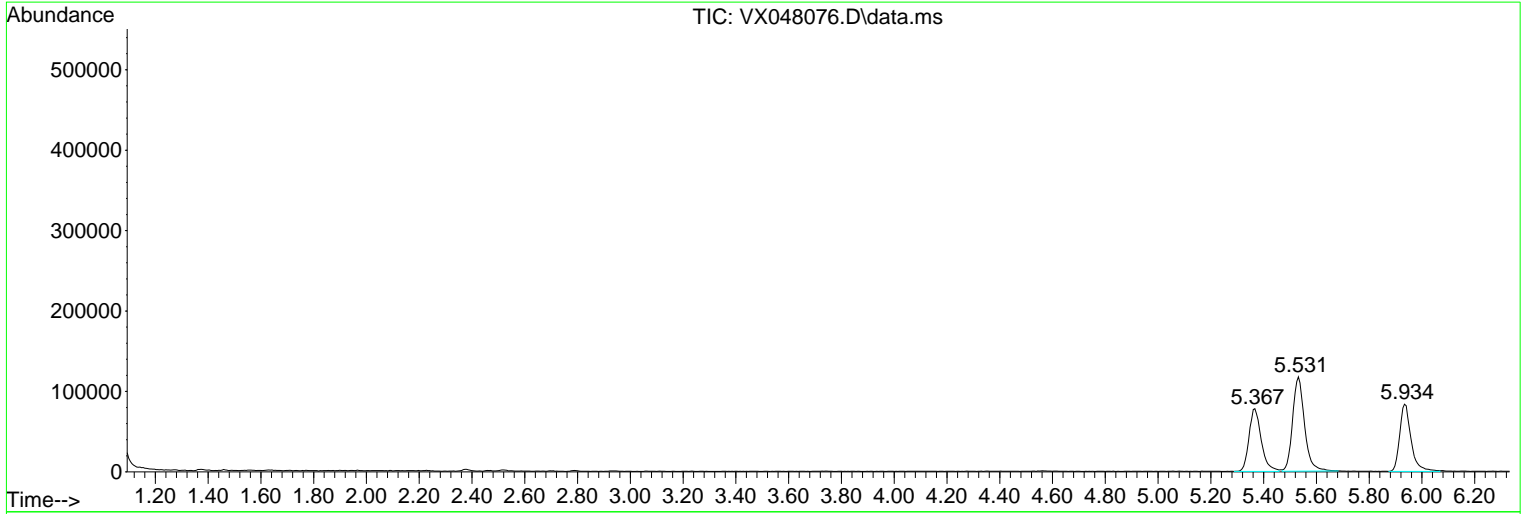
Sum of corrected areas: 4772025

Data Path : Z:\voasrv\HPCHEM1\MSVOA\_X\Data\VX100925\  
 Data File : VX048076.D  
 Acq On : 09 Oct 2025 11:29  
 Operator : JC/MD  
 Sample : Q3318-04 50X  
 Misc : 5.0mL/MSVOA\_X/WATER  
 ALS Vial : 6 Sample Multiplier: 1

Instrument :  
 MSVOA\_X  
 ClientSampleId :  
 3436

Quant Method : Z:\voasrv\HPCHEM1\MSVOA\_X\Method\82X091625W.M  
 Quant Title : SW846 8260

TIC Library : C:\Database\NIST20.L  
 TIC Integration Parameters: LSCINT.P



Library Search Compound Report

Data Path : Z:\voasrv\HPCHEM1\MSVOA\_X\Data\VX100925\  
Data File : VX048076.D  
Acq On : 09 Oct 2025 11:29  
Operator : JC/MD  
Sample : Q3318-04 50X  
Misc : 5.0mL/MSVOA\_X/WATER  
ALS Vial : 6 Sample Multiplier: 1

Instrument :  
MSVOA\_X  
ClientSampleId :  
3436

Quant Method : Z:\voasrv\HPCHEM1\MSVOA\_X\Method\82X091625W.M  
Quant Title : SW846 8260

TIC Library : C:\Database\NIST20.L  
TIC Integration Parameters: LSCINT.P

No Library Search Compounds Detected

\*\*\*\*\*

Data Path : Z:\voasrv\HPCHEM1\MSVOA\_X\Data\VX100925\  
Data File : VX048076.D  
Acq On : 09 Oct 2025 11:29  
Operator : JC/MD  
Sample : Q3318-04 50X  
Misc : 5.0mL/MSVOA\_X/WATER  
ALS Vial : 6 Sample Multiplier: 1

Instrument :  
MSVOA\_X  
ClientSampleId :  
3436

Quant Method : Z:\voasrv\HPCHEM1\MSVOA\_X\Method\82X091625W.M  
Quant Title : SW846 8260

TIC Library : C:\Database\NIST20.L  
TIC Integration Parameters: LSCINT.P

| TIC Top Hit name | RT | EstConc | Units | Response | --Internal Standard-- |    |      |      |
|------------------|----|---------|-------|----------|-----------------------|----|------|------|
|                  |    |         |       |          | #                     | RT | Resp | Conc |

---