

Data Path : Z:\voasrv\HPCHEM1\MSVOA_X\Data\VX100925\
 Data File : VX048083.D
 Acq On : 09 Oct 2025 14:00
 Operator : JC/MD
 Sample : Q3311-06
 Misc : 5.0mL/MSVOA_X/WATER
 ALS Vial : 13 Sample Multiplier: 1

Instrument :
 MSVOA_X
 ClientSampleId :
 MW-1D

Integration Parameters: RTEINT.P

Integrator: RTE
 Smoothing : ON Filtering: 5
 Sampling : 1 Min Area: 3 % of largest Peak
 Start Thrs: 0.2 Max Peaks: 100
 Stop Thrs : 0 Peak Location: TOP

If leading or trailing edge < 100 prefer < Baseline drop else tangent >
 Peak separation: 5

Method : Z:\voasrv\HPCHEM1\MSVOA_X\Method\82X091625W.M
 Title : SW846 8260

Signal : TIC: VX048083.D\data.ms

peak #	R.T. min	first scan	max scan	last scan	PK TY	peak height	corr. area	corr. % max.	% of total
1	5.379	690	704	718	rBV2	89488	290503	6.43%	3.079%
2	5.544	721	731	752	rVB2	123877	395668	8.75%	4.193%
3	5.946	787	797	824	rBV2	99138	297950	6.59%	3.158%
4	6.745	919	928	952	rBV	240641	632779	14.00%	6.706%
5	8.635	1231	1238	1248	rBV	499343	813210	17.99%	8.618%
6	9.256	1334	1340	1364	rVB	2914335	4520194	100.00%	47.904%
7	9.506	1376	1381	1390	rBV	53137	86989	1.92%	0.922%
8	10.037	1462	1468	1483	rBV	613215	870346	19.25%	9.224%
9	11.061	1631	1636	1651	rBV	460457	639915	14.16%	6.782%
10	12.000	1785	1790	1800	rBV	660197	888333	19.65%	9.414%

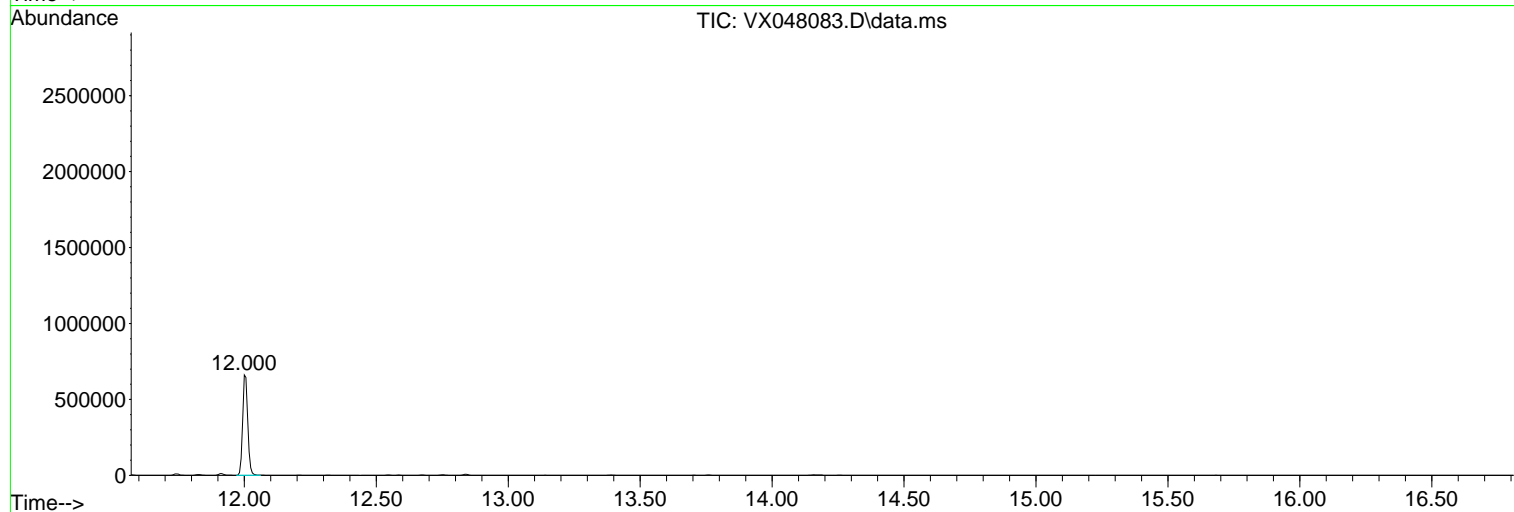
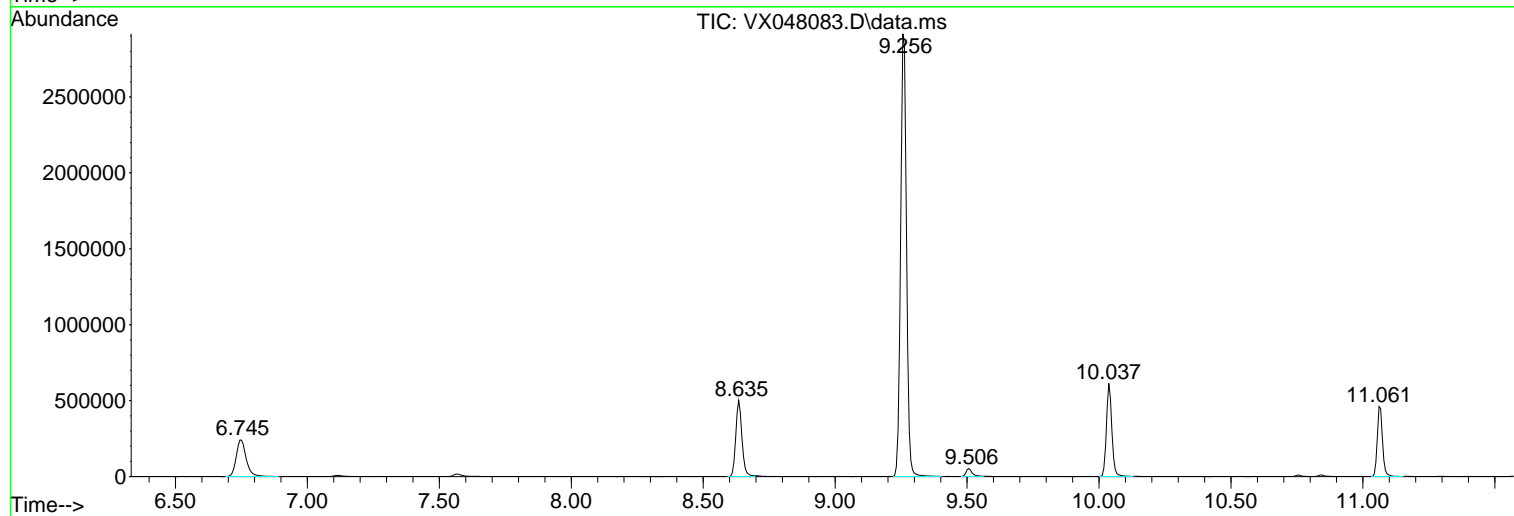
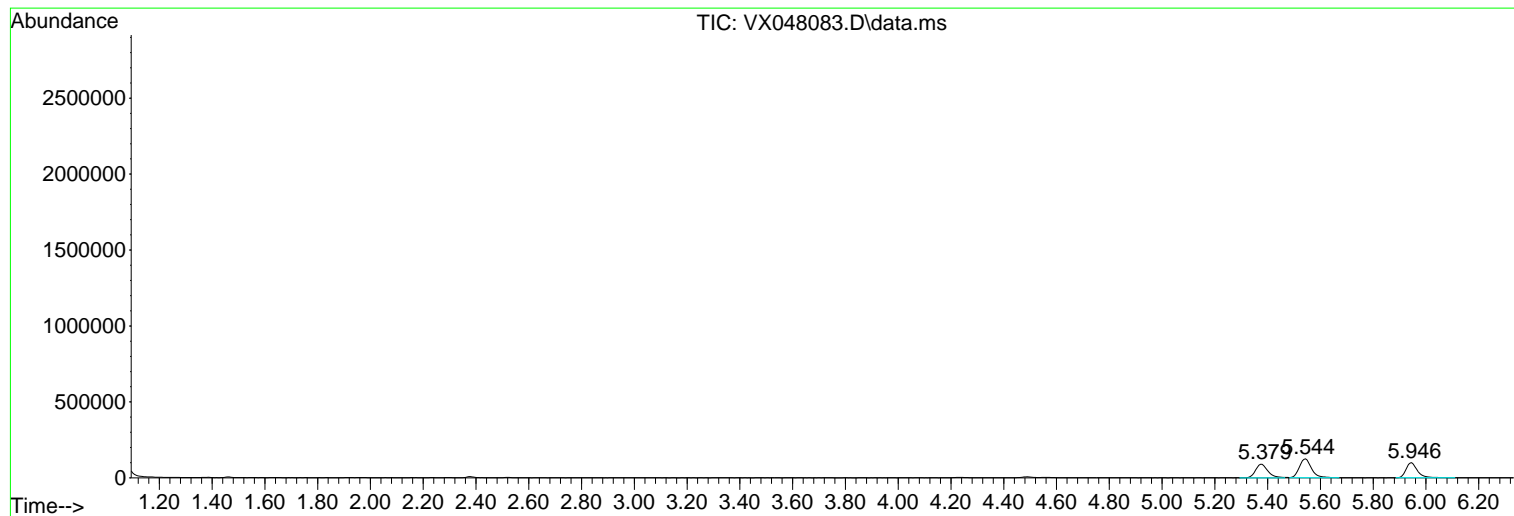
Sum of corrected areas: 9435887

Data Path : Z:\voasrv\HPCHEM1\MSVOA_X\Data\VX100925\
Data File : VX048083.D
Acq On : 09 Oct 2025 14:00
Operator : JC/MD
Sample : Q3311-06
Misc : 5.0mL/MSVOA_X/WATER
ALS Vial : 13 Sample Multiplier: 1

Instrument :
MSVOA_X
ClientSampleId :
MW-1D

Quant Method : Z:\voasrv\HPCHEM1\MSVOA_X\Method\82X091625W.M
Quant Title : SW846 8260

TIC Library : C:\Database\NIST20.L
TIC Integration Parameters: LSCINT.P



Library Search Compound Report

Data Path : Z:\voasrv\HPCHEM1\MSVOA_X\Data\VX100925\
Data File : VX048083.D
Acq On : 09 Oct 2025 14:00
Operator : JC/MD
Sample : Q3311-06
Misc : 5.0mL/MSVOA_X/WATER
ALS Vial : 13 Sample Multiplier: 1

Instrument :
MSVOA_X
ClientSampleId :
MW-1D

Quant Method : Z:\voasrv\HPCHEM1\MSVOA_X\Method\82X091625W.M
Quant Title : SW846 8260

TIC Library : C:\Database\NIST20.L
TIC Integration Parameters: LSCINT.P

No Library Search Compounds Detected

Data Path : Z:\voasrv\HPCHEM1\MSVOA_X\Data\VX100925\
Data File : VX048083.D
Acq On : 09 Oct 2025 14:00
Operator : JC/MD
Sample : Q3311-06
Misc : 5.0mL/MSVOA_X/WATER
ALS Vial : 13 Sample Multiplier: 1

Instrument :
MSVOA_X
ClientSampleId :
MW-1D

Quant Method : Z:\voasrv\HPCHEM1\MSVOA_X\Method\82X091625W.M
Quant Title : SW846 8260

TIC Library : C:\Database\NIST20.L
TIC Integration Parameters: LSCINT.P

TIC Top Hit name	RT	EstConc	Units	Response	--Internal Standard--		
					#	RT	Resp Conc
