

Data Path : Z:\voasrv\HPCHEM1\MSVOA_X\Data\VX100925\
 Data File : VX048091.D
 Acq On : 09 Oct 2025 16:44
 Operator : JC/MD
 Sample : IBLK
 Misc : 5.0mL/MSVOA_X/WATER
 ALS Vial : 21 Sample Multiplier: 1

Instrument :
 MSVOA_X
 ClientSampleId :
 IBLK

Integration Parameters: RTEINT.P

Integrator: RTE
 Smoothing : ON Filtering: 5
 Sampling : 1 Min Area: 3 % of largest Peak
 Start Thrs: 0.2 Max Peaks: 100
 Stop Thrs : 0 Peak Location: TOP

If leading or trailing edge < 100 prefer < Baseline drop else tangent >
 Peak separation: 5

Method : Z:\voasrv\HPCHEM1\MSVOA_X\Method\82X091625W.M
 Title : SW846 8260

Signal : TIC: VX048091.D\data.ms

peak #	R.T. min	first scan	max scan	last scan	PK TY	peak height	corr. area	corr. % max.	% of total
1	5.373	692	703	720	rBV3	93976	302021	35.41%	6.099%
2	5.544	720	731	751	rVB	115771	362824	42.54%	7.327%
3	5.940	786	796	812	rBV	104705	310052	36.35%	6.261%
4	6.745	918	928	951	rBV	220179	588662	69.02%	11.888%
5	8.635	1231	1238	1259	rBV	503528	838178	98.27%	16.927%
6	9.256	1332	1340	1352	rBV3	134921	210198	24.64%	4.245%
7	10.037	1462	1468	1490	rBV	591437	830319	97.35%	16.768%
8	11.067	1631	1637	1652	rBV	458618	656569	76.98%	13.259%
9	12.006	1785	1791	1802	rBV	629547	852920	100.00%	17.225%

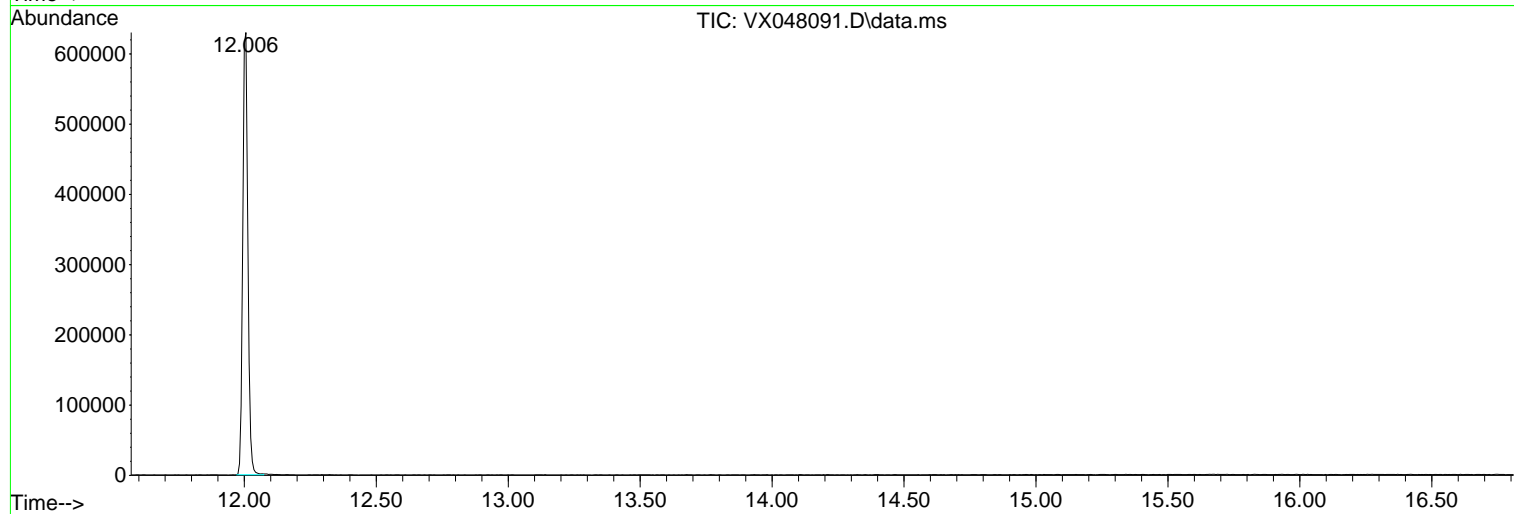
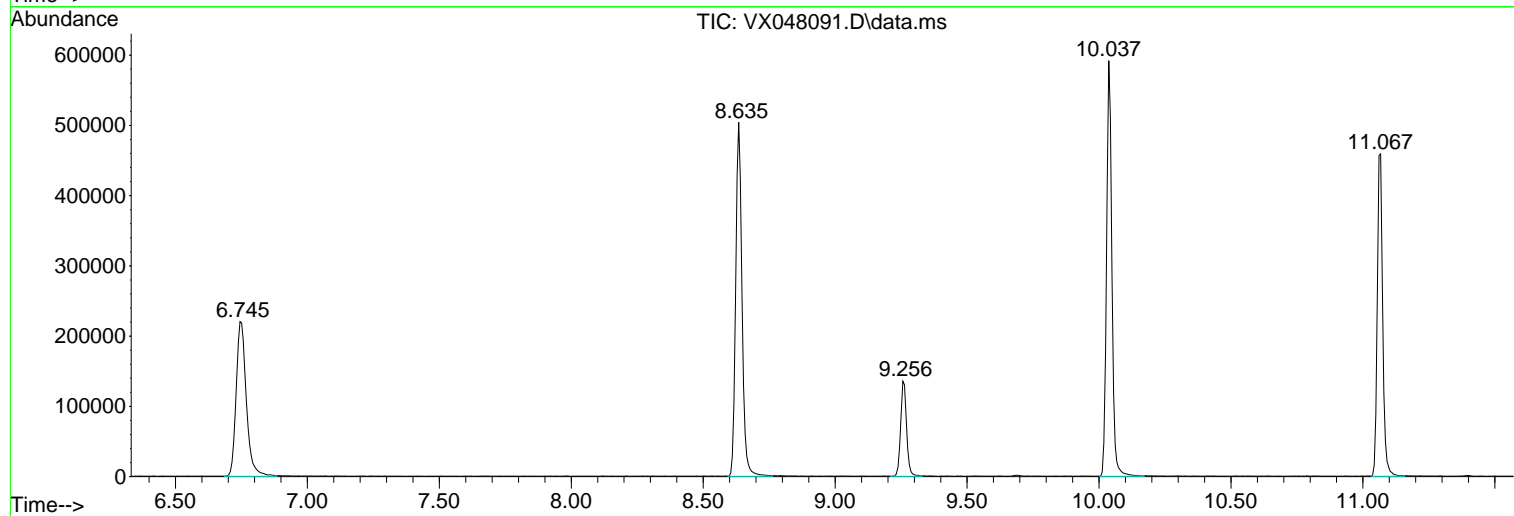
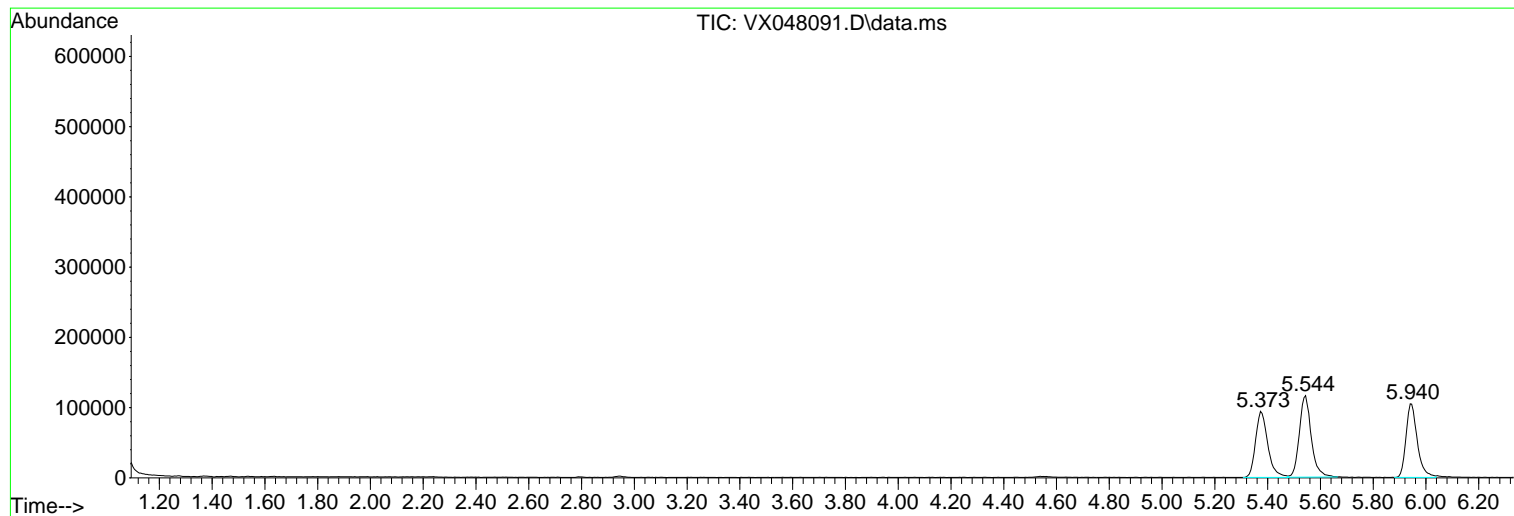
Sum of corrected areas: 4951743

Data Path : Z:\voasrv\HPCHEM1\MSVOA_X\Data\VX100925\
Data File : VX048091.D
Acq On : 09 Oct 2025 16:44
Operator : JC/MD
Sample : IBLK
Misc : 5.0mL/MSVOA_X/WATER
ALS Vial : 21 Sample Multiplier: 1

Instrument :
MSVOA_X
ClientSampleId :
IBLK

Quant Method : Z:\voasrv\HPCHEM1\MSVOA_X\Method\82X091625W.M
Quant Title : SW846 8260

TIC Library : C:\Database\NIST20.L
TIC Integration Parameters: LSCINT.P



Library Search Compound Report

Data Path : Z:\voasrv\HPCHEM1\MSVOA_X\Data\VX100925\
Data File : VX048091.D
Acq On : 09 Oct 2025 16:44
Operator : JC/MD
Sample : IBLK
Misc : 5.0mL/MSVOA_X/WATER
ALS Vial : 21 Sample Multiplier: 1

Instrument :
MSVOA_X
ClientSampleId :
IBLK

Quant Method : Z:\voasrv\HPCHEM1\MSVOA_X\Method\82X091625W.M
Quant Title : SW846 8260

TIC Library : C:\Database\NIST20.L
TIC Integration Parameters: LSCINT.P

No Library Search Compounds Detected

Data Path : Z:\voasrv\HPCHEM1\MSVOA_X\Data\VX100925\
Data File : VX048091.D
Acq On : 09 Oct 2025 16:44
Operator : JC/MD
Sample : IBLK
Misc : 5.0mL/MSVOA_X/WATER
ALS Vial : 21 Sample Multiplier: 1

Instrument :
MSVOA_X
ClientSampleId :
IBLK

Quant Method : Z:\voasrv\HPCHEM1\MSVOA_X\Method\82X091625W.M
Quant Title : SW846 8260

TIC Library : C:\Database\NIST20.L
TIC Integration Parameters: LSCINT.P

TIC Top Hit name	RT	EstConc	Units	Response	--Internal Standard--			
					#	RT	Resp	Conc
