

Data Path : Z:\voasrv\HPCHEM1\MSVOA_X\Data\VX100925\
 Data File : VX048096.D
 Acq On : 09 Oct 2025 18:27
 Operator : JC/MD
 Sample : IBLK
 Misc : 5.0mL/MSVOA_X/WATER
 ALS Vial : 26 Sample Multiplier: 1

Instrument :
 MSVOA_X
 ClientSampleId :
 IBLK

Integration Parameters: RTEINT.P
 Integrator: RTE
 Smoothing : ON Filtering: 5
 Sampling : 1 Min Area: 3 % of largest Peak
 Start Thrs: 0.2 Max Peaks: 100
 Stop Thrs : 0 Peak Location: TOP

If leading or trailing edge < 100 prefer < Baseline drop else tangent >
 Peak separation: 5

Method : Z:\voasrv\HPCHEM1\MSVOA_X\Method\82X091625W.M
 Title : SW846 8260

Signal : TIC: VX048096.D\data.ms

peak #	R.T. min	first scan	max scan	last scan	PK TY	peak height	corr. area	corr. % max.	% of total
1	5.373	690	703	721	rBV2	91096	294984	35.32%	6.304%
2	5.544	721	731	753	rVB	114772	359514	43.05%	7.683%
3	5.946	784	797	815	rBV	98297	295494	35.38%	6.315%
4	6.751	918	929	946	rBV	217830	570964	68.37%	12.202%
5	8.635	1231	1238	1260	rBV	486264	815061	97.60%	17.418%
6	9.256	1335	1340	1349	rVB2	42498	67981	8.14%	1.453%
7	10.037	1462	1468	1485	rBV	562928	807852	96.73%	17.264%
8	11.061	1631	1636	1650	rBV	445055	632394	75.72%	13.515%
9	12.006	1785	1791	1805	rBV	635428	835122	100.00%	17.847%

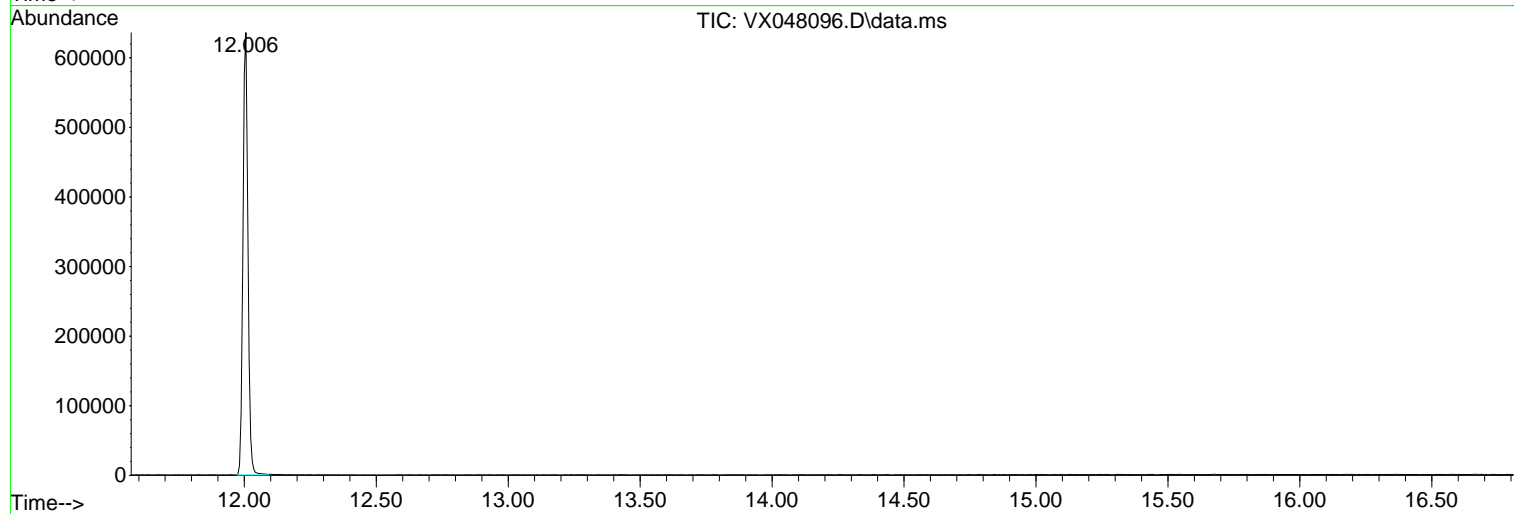
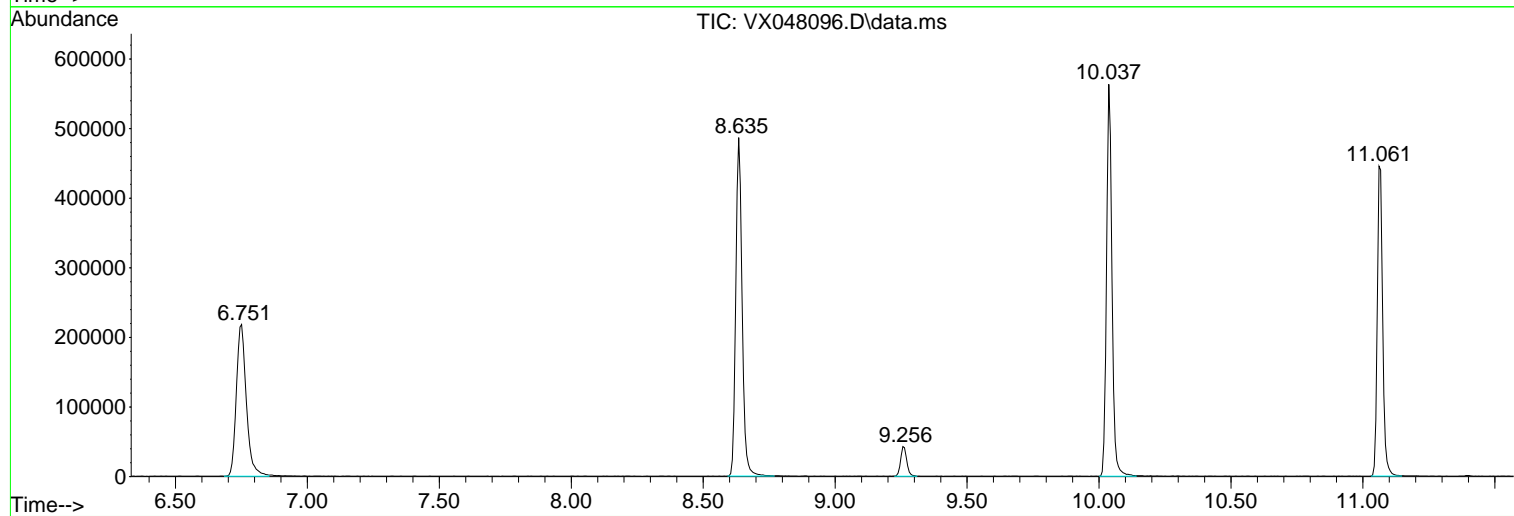
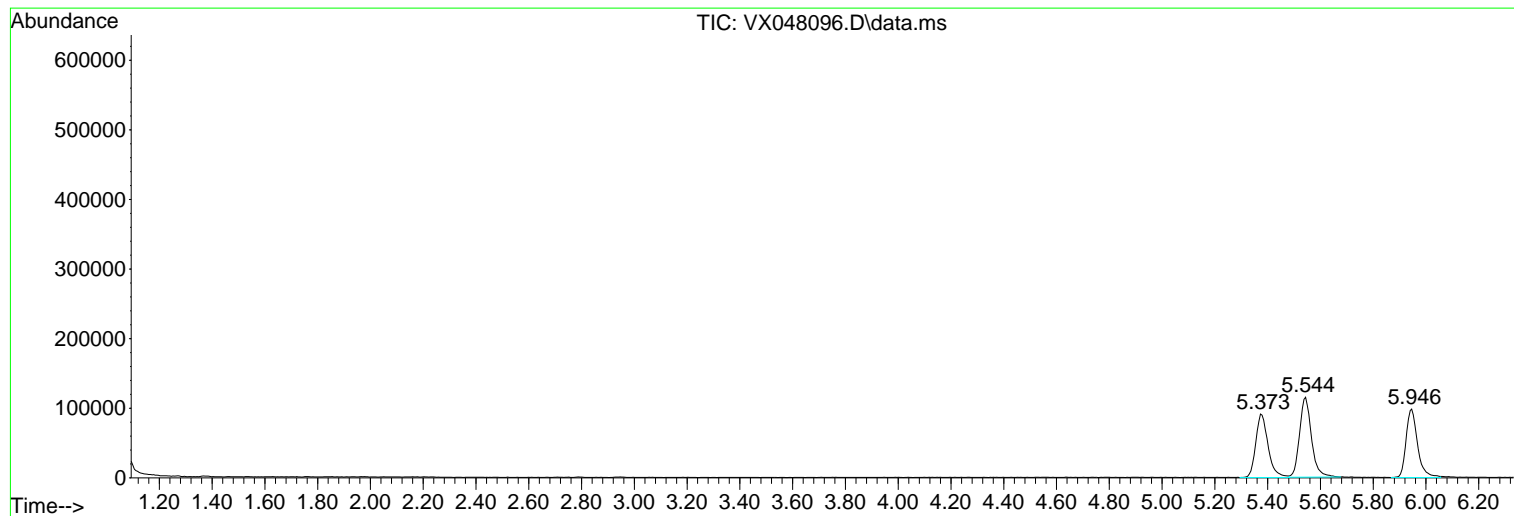
Sum of corrected areas: 4679366

Data Path : Z:\voasrv\HPCHEM1\MSVOA_X\Data\VX100925\
Data File : VX048096.D
Acq On : 09 Oct 2025 18:27
Operator : JC/MD
Sample : IBLK
Misc : 5.0mL/MSVOA_X/WATER
ALS Vial : 26 Sample Multiplier: 1

Instrument :
MSVOA_X
ClientSampleId :
IBLK

Quant Method : Z:\voasrv\HPCHEM1\MSVOA_X\Method\82X091625W.M
Quant Title : SW846 8260

TIC Library : C:\Database\NIST20.L
TIC Integration Parameters: LSCINT.P



Library Search Compound Report

Data Path : Z:\voasrv\HPCHEM1\MSVOA_X\Data\VX100925\
Data File : VX048096.D
Acq On : 09 Oct 2025 18:27
Operator : JC/MD
Sample : IBLK
Misc : 5.0mL/MSVOA_X/WATER
ALS Vial : 26 Sample Multiplier: 1

Instrument :
MSVOA_X
ClientSampleId :
IBLK

Quant Method : Z:\voasrv\HPCHEM1\MSVOA_X\Method\82X091625W.M
Quant Title : SW846 8260

TIC Library : C:\Database\NIST20.L
TIC Integration Parameters: LSCINT.P

No Library Search Compounds Detected

Data Path : Z:\voasrv\HPCHEM1\MSVOA_X\Data\VX100925\
Data File : VX048096.D
Acq On : 09 Oct 2025 18:27
Operator : JC/MD
Sample : IBLK
Misc : 5.0mL/MSVOA_X/WATER
ALS Vial : 26 Sample Multiplier: 1

Instrument :
MSVOA_X
ClientSampleId :
IBLK

Quant Method : Z:\voasrv\HPCHEM1\MSVOA_X\Method\82X091625W.M
Quant Title : SW846 8260

TIC Library : C:\Database\NIST20.L
TIC Integration Parameters: LSCINT.P

TIC Top Hit name	RT	EstConc	Units	Response	--Internal Standard--		
					#	RT	Resp Conc
