

Data Path : Z:\voasrv\HPCHEM1\MSVOA_X\Data\VX101024\
 Data File : VX043353.D
 Acq On : 10 Oct 2024 15:25
 Operator : JC/MD
 Sample : IBLK
 Misc : 5.0mL/MSVOA_X/WATER
 ALS Vial : 8 Sample Multiplier: 1

Instrument :
 MSVOA_X
 ClientSampleId :

Quant Time: Oct 11 01:45:38 2024
 Quant Method : Z:\voasrv\HPCHEM1\MSVOA_X\Method\82X100124W.M
 Quant Title : SW846 8260
 QLast Update : Wed Oct 02 16:50:57 2024
 Response via : Initial Calibration

Compound	R.T.	QIon	Response	Conc	Units	Dev(Min)

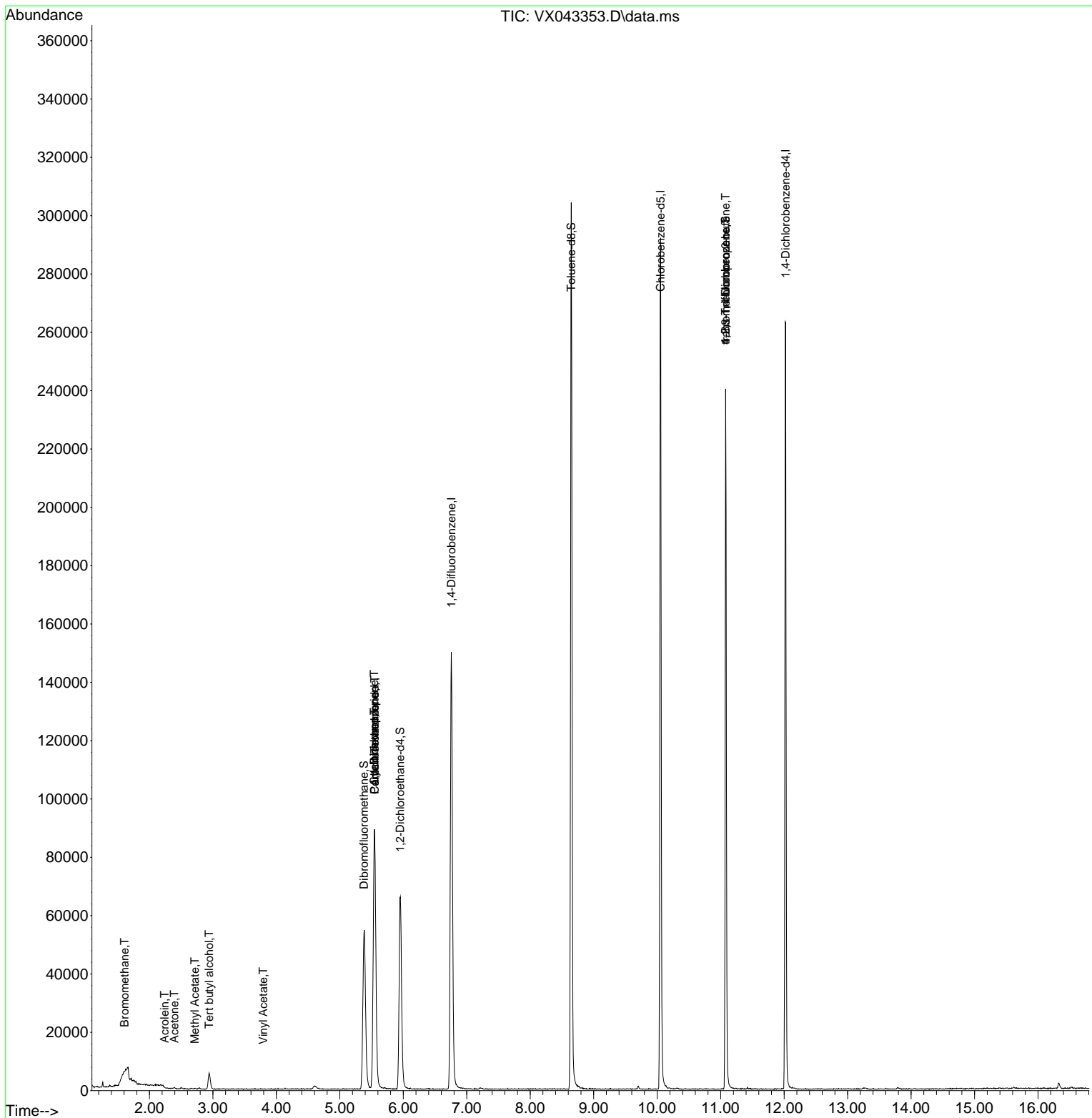
Internal Standards						
1) Pentafluorobenzene	5.550	168	82028	50.000	ug/l	0.00
34) 1,4-Difluorobenzene	6.757	114	150297	50.000	ug/l	0.00
63) Chlorobenzene-d5	10.055	117	132099	50.000	ug/l	0.00
72) 1,4-Dichlorobenzene-d4	12.024	152	55883	50.000	ug/l	0.00
System Monitoring Compounds						
33) 1,2-Dichloroethane-d4	5.952	65	68689	51.274	ug/l	0.00
Spiked Amount	50.000	Range 74 - 125	Recovery	=	102.540%	
35) Dibromofluoromethane	5.379	113	48262	46.562	ug/l	0.00
Spiked Amount	50.000	Range 75 - 124	Recovery	=	93.120%	
50) Toluene-d8	8.647	98	181619	50.562	ug/l	0.00
Spiked Amount	50.000	Range 86 - 113	Recovery	=	101.120%	
62) 4-Bromofluorobenzene	11.079	95	64645	49.539	ug/l	0.00
Spiked Amount	50.000	Range 77 - 121	Recovery	=	99.080%	
Target Compounds						
						Qvalue
5) Bromomethane	1.605	94	131	0.326	ug/l	87
11) Tert butyl alcohol	2.940	59	3283	12.878	ug/l #	71
13) Acrolein	2.239	56	67	0.278	ug/l #	10
16) Acetone	2.392	43	455	0.813	ug/l #	47
18) Methyl Acetate	2.715	43	390	0.278	ug/l #	51
23) Vinyl Acetate	3.794	43	54	6.355	ug/l #	71
31) Cyclohexane	5.544	56	1997	1.382	ug/l #	25
36) 1,1-Dichloropropene	5.544	75	7493	5.722	ug/l #	49
38) Carbon Tetrachloride	5.550	117	8948	5.772	ug/l #	15
76) 1,2,3-Trichloropropane	11.079	75	35461	28.608	ug/l #	33
81) trans-1,4-Dichloro-2-b...	11.079	75	35461	74.142	ug/l #	8

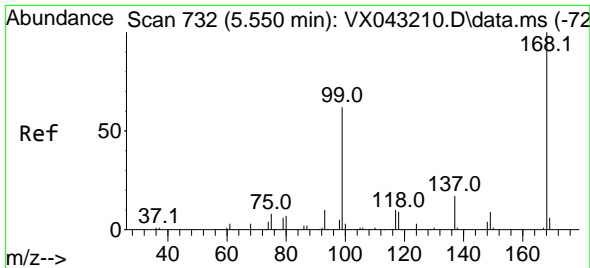
(#) = qualifier out of range (m) = manual integration (+) = signals summed

Data Path : Z:\voasrv\HPCHEM1\MSVOA_X\Data\VX101024\
 Data File : VX043353.D
 Acq On : 10 Oct 2024 15:25
 Operator : JC/MD
 Sample : IBLK
 Misc : 5.0mL/MSVOA_X/WATER
 ALS Vial : 8 Sample Multiplier: 1

Instrument :
 MSVOA_X
 ClientSampleId :

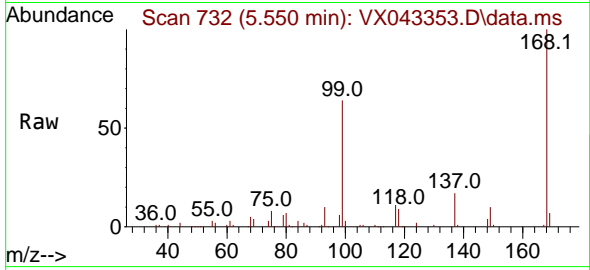
Quant Time: Oct 11 01:45:38 2024
 Quant Method : Z:\voasrv\HPCHEM1\MSVOA_X\Method\82X100124W.M
 Quant Title : SW846 8260
 QLast Update : Wed Oct 02 16:50:57 2024
 Response via : Initial Calibration



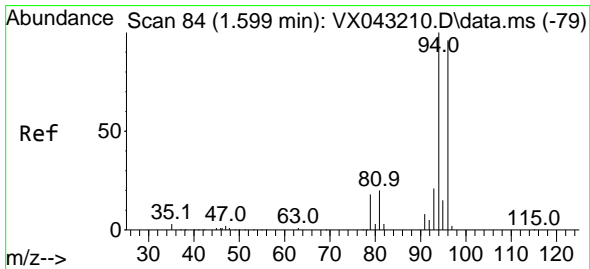
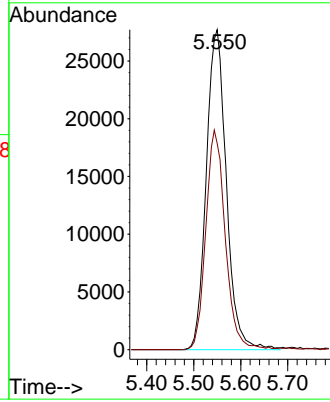
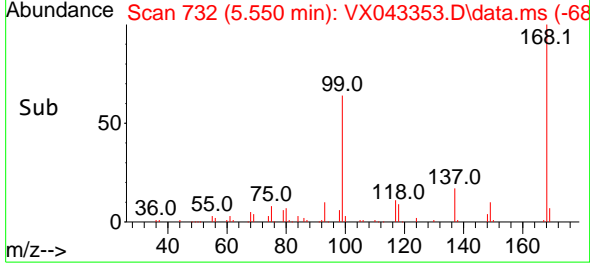


#1
 Pentafluorobenzene
 Concen: 50.000 ug/l
 RT: 5.550 min Scan# 71
 Delta R.T. -0.000 min
 Lab File: VX043353.D
 Acq: 10 Oct 2024 15:25

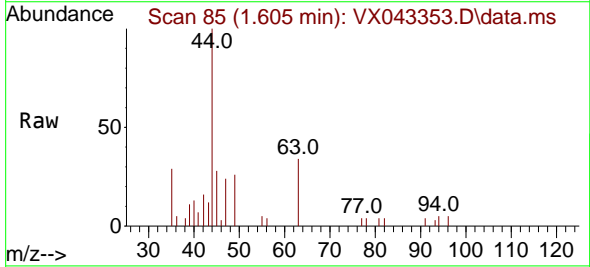
Instrument :
 MSVOA_X
 ClientSampleId :



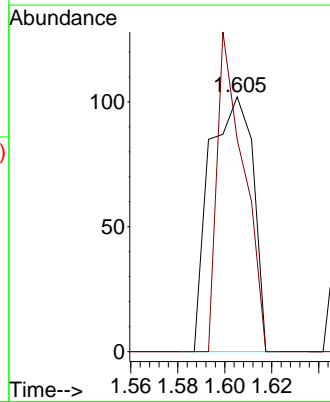
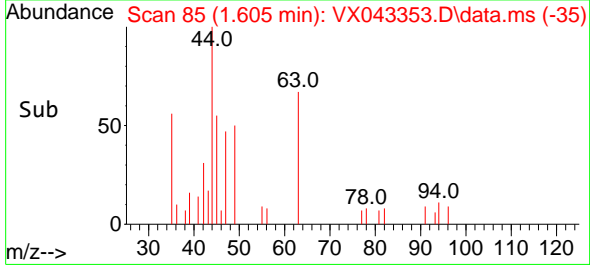
Tgt Ion:168 Resp: 82028
 Ion Ratio Lower Upper
 168 100
 99 64.5 49.7 74.5

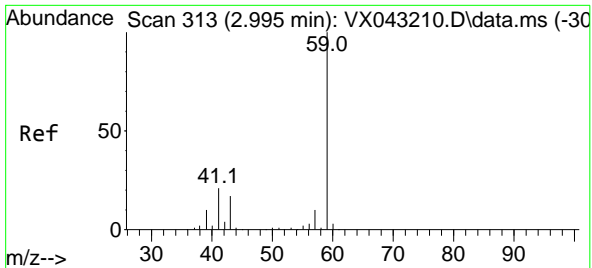


#5
 Bromomethane
 Concen: 0.326 ug/l
 RT: 1.605 min Scan# 85
 Delta R.T. 0.006 min
 Lab File: VX043353.D
 Acq: 10 Oct 2024 15:25



Tgt Ion: 94 Resp: 131
 Ion Ratio Lower Upper
 94 100
 96 83.3 76.6 115.0

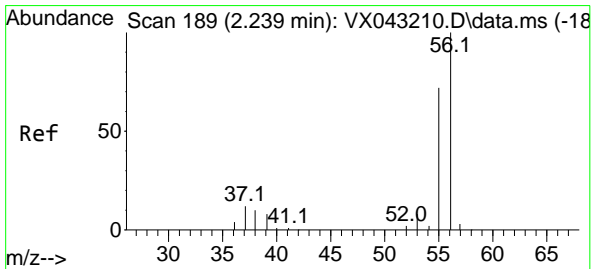
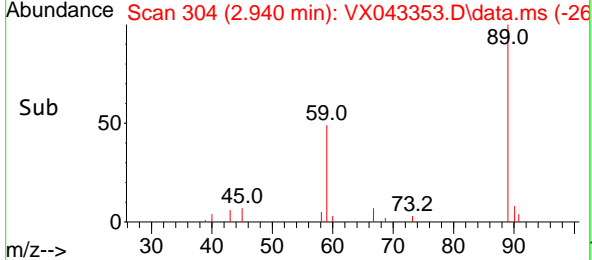
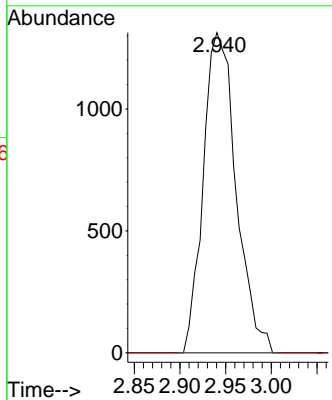
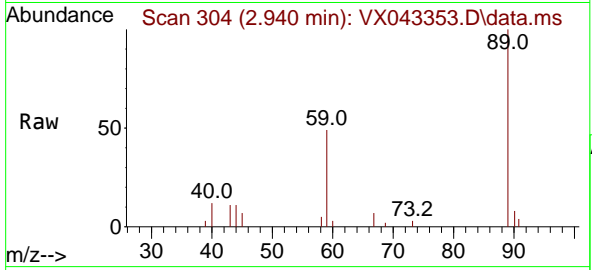




#11
 Tert butyl alcohol
 Concen: 12.878 ug/l
 RT: 2.940 min Scan# 30
 Delta R.T. -0.055 min
 Lab File: VX043353.D
 Acq: 10 Oct 2024 15:25

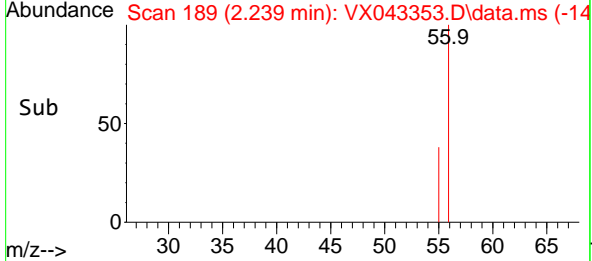
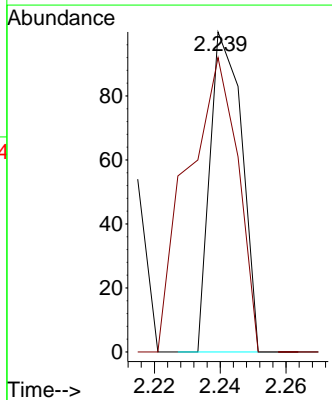
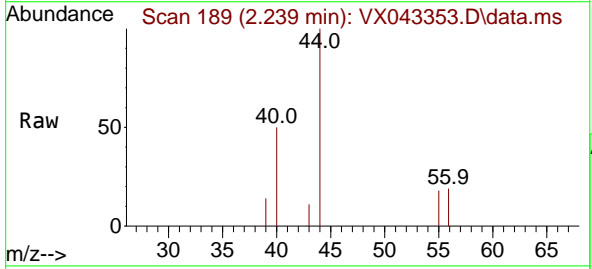
Instrument : MSVOA_X
 ClientSampleId :

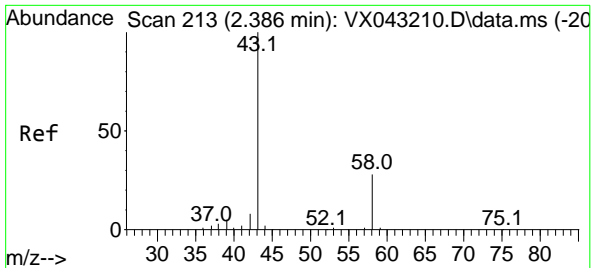
Tgt Ion: 59 Resp: 3283
 Ion Ratio Lower Upper
 59 100
 57 0.0 8.6 13.0#



#13
 Acrolein
 Concen: 0.278 ug/l
 RT: 2.239 min Scan# 189
 Delta R.T. -0.000 min
 Lab File: VX043353.D
 Acq: 10 Oct 2024 15:25

Tgt Ion: 56 Resp: 67
 Ion Ratio Lower Upper
 56 100
 55 146.3 57.4 86.0#

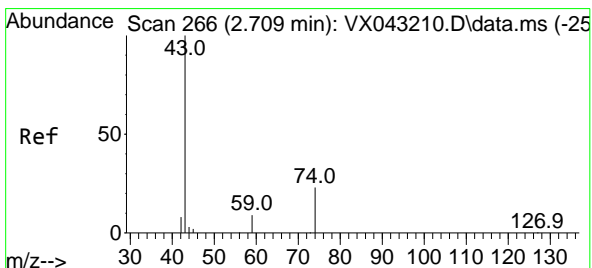
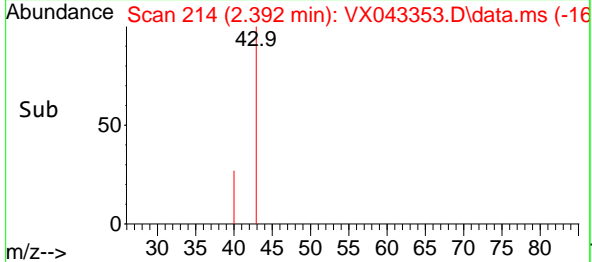
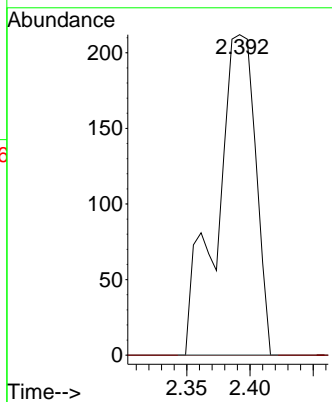
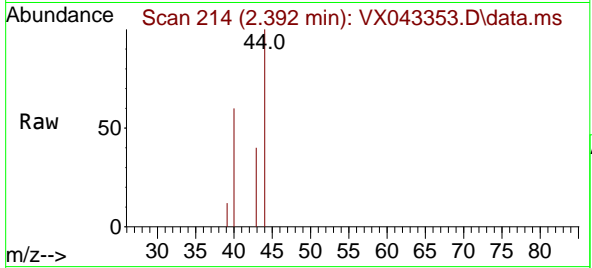




#16
 Acetone
 Concen: 0.813 ug/l
 RT: 2.392 min Scan# 21
 Delta R.T. 0.006 min
 Lab File: VX043353.D
 Acq: 10 Oct 2024 15:25

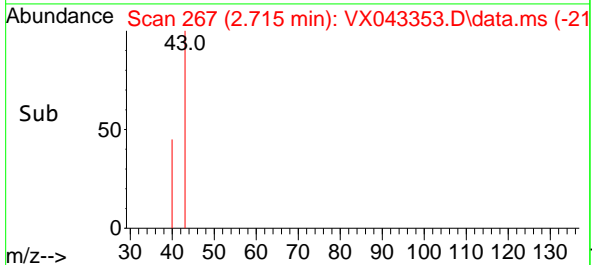
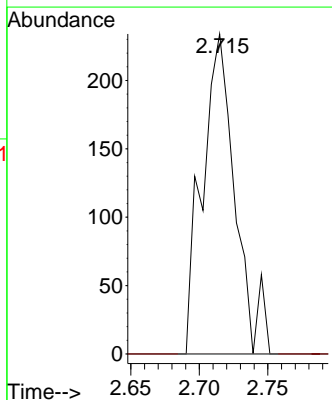
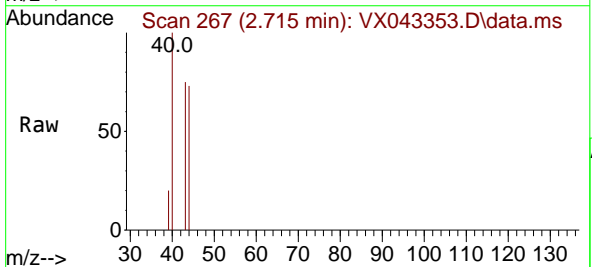
Instrument :
 MSVOA_X
 ClientSampleId :

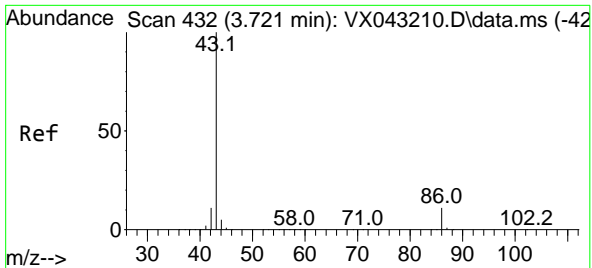
Tgt Ion: 43 Resp: 455
 Ion Ratio Lower Upper
 43 100
 58 0.0 22.6 33.8#



#18
 Methyl Acetate
 Concen: 0.278 ug/l
 RT: 2.715 min Scan# 267
 Delta R.T. 0.006 min
 Lab File: VX043353.D
 Acq: 10 Oct 2024 15:25

Tgt Ion: 43 Resp: 390
 Ion Ratio Lower Upper
 43 100
 74 0.0 19.1 28.7#

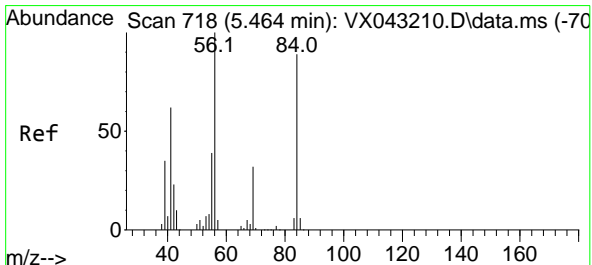
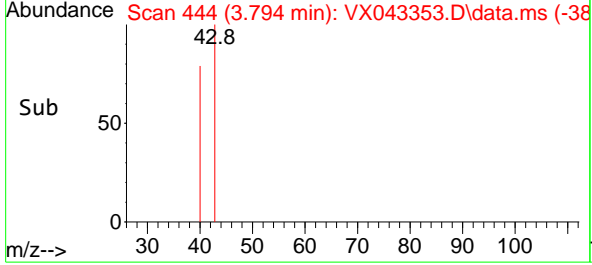
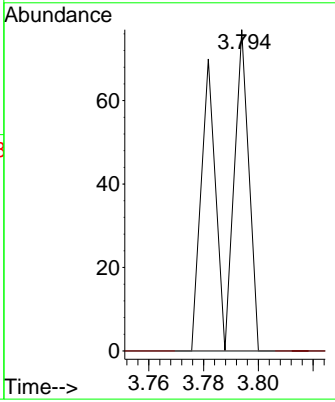
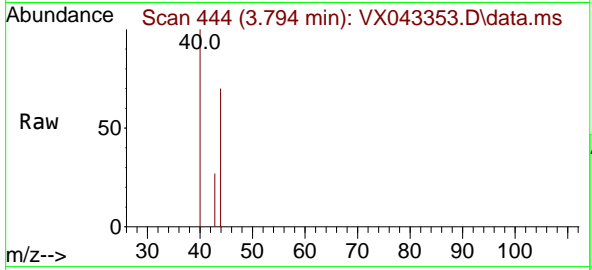




#23
 Vinyl Acetate
 Concen: 6.355 ug/l
 RT: 3.794 min Scan# 444
 Delta R.T. 0.073 min
 Lab File: VX043353.D
 Acq: 10 Oct 2024 15:25

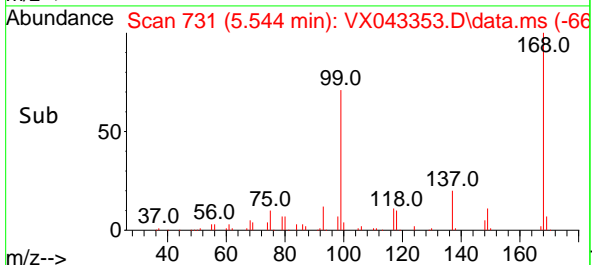
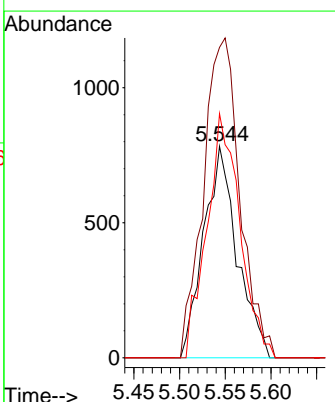
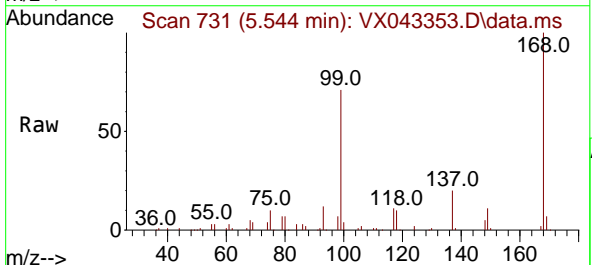
Instrument : MSVOA_X
 ClientSampleId :

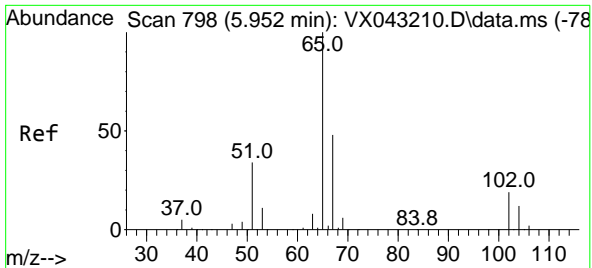
Tgt Ion: 43 Resp: 54
 Ion Ratio Lower Upper
 43 100
 86 0.0 8.8 13.2#



#31
 Cyclohexane
 Concen: 1.382 ug/l
 RT: 5.544 min Scan# 731
 Delta R.T. 0.079 min
 Lab File: VX043353.D
 Acq: 10 Oct 2024 15:25

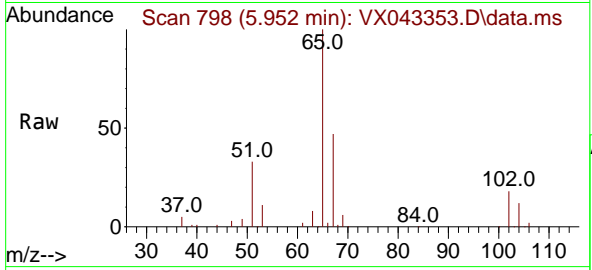
Tgt Ion: 56 Resp: 1997
 Ion Ratio Lower Upper
 56 100
 69 146.7 25.8 38.6#
 84 115.5 71.1 106.7#



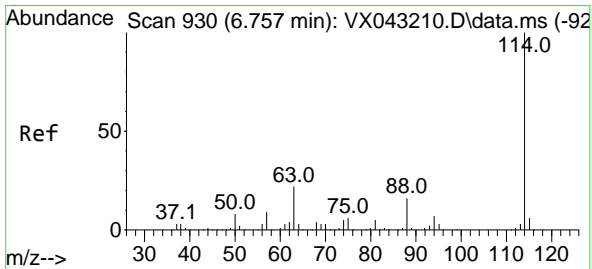
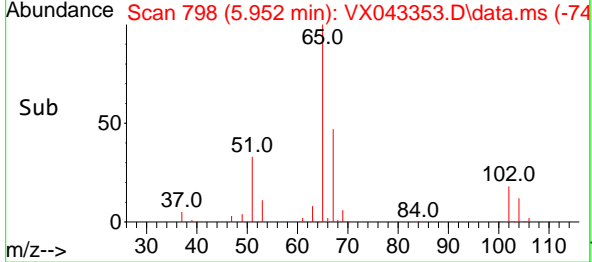
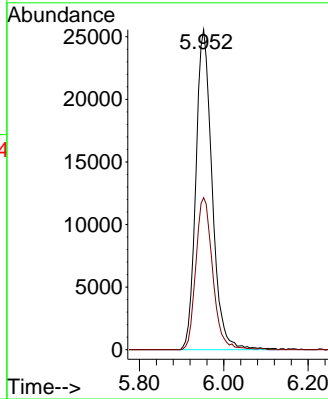


#33
 1,2-Dichloroethane-d4
 Concen: 51.274 ug/l
 RT: 5.952 min Scan# 798
 Delta R.T. -0.000 min
 Lab File: VX043353.D
 Acq: 10 Oct 2024 15:25

Instrument : MSVOA_X
 ClientSampleId :

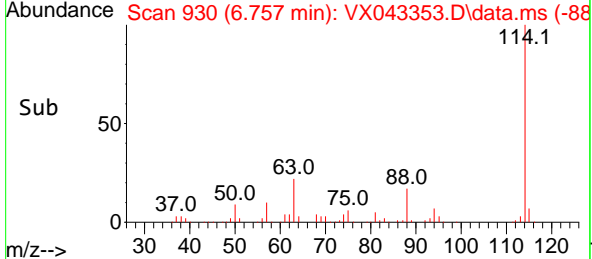
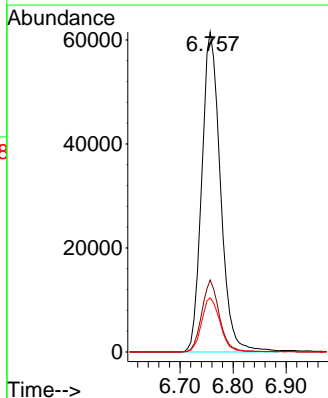
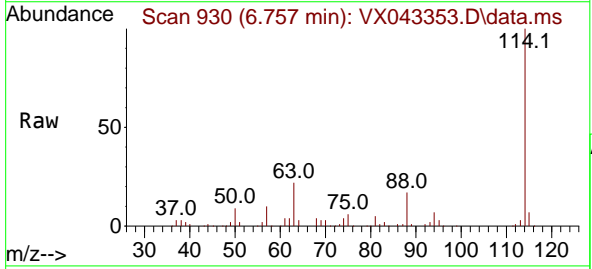


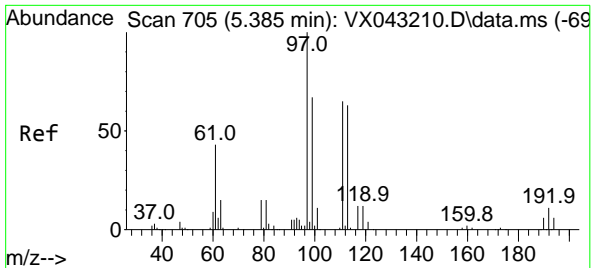
Tgt Ion: 65 Resp: 68689
 Ion Ratio Lower Upper
 65 100
 67 49.1 0.0 99.0



#34
 1,4-Difluorobenzene
 Concen: 50.000 ug/l
 RT: 6.757 min Scan# 930
 Delta R.T. -0.000 min
 Lab File: VX043353.D
 Acq: 10 Oct 2024 15:25

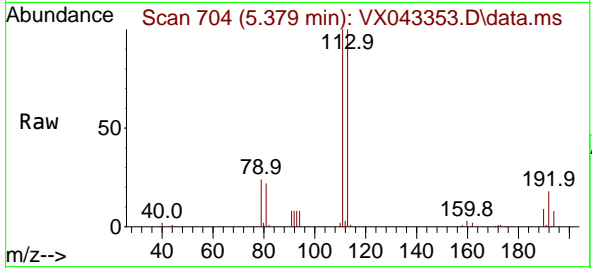
Tgt Ion: 114 Resp: 150297
 Ion Ratio Lower Upper
 114 100
 63 22.5 0.0 43.0
 88 16.9 0.0 33.0



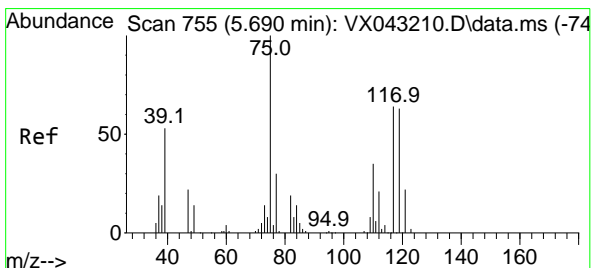
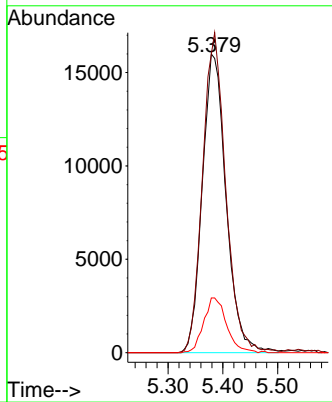
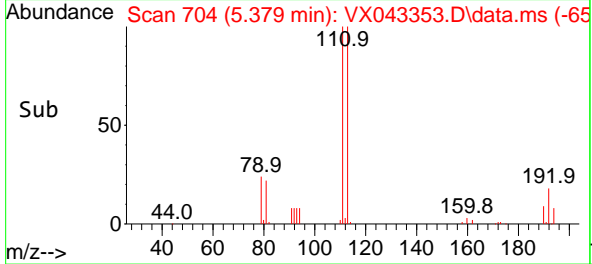


#35
 Dibromofluoromethane
 Concen: 46.562 ug/l
 RT: 5.379 min Scan# 704
 Delta R.T. -0.006 min
 Lab File: VX043353.D
 Acq: 10 Oct 2024 15:25

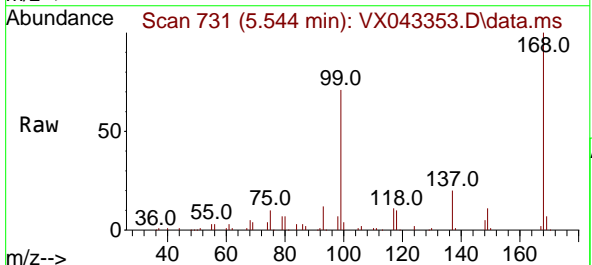
Instrument : MSVOA_X
 ClientSampleId :



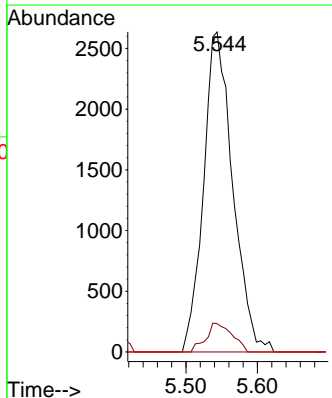
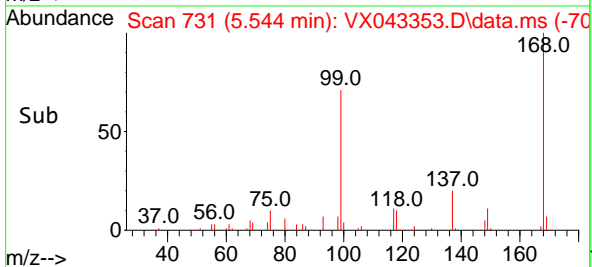
Tgt Ion: 113 Resp: 48262
 Ion Ratio Lower Upper
 113 100
 111 104.3 83.4 125.0
 192 17.6 14.1 21.1

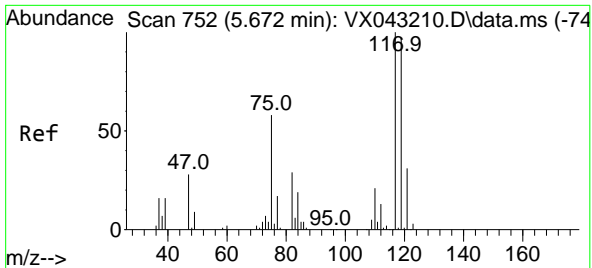


#36
 1,1-Dichloropropene
 Concen: 5.722 ug/l
 RT: 5.544 min Scan# 731
 Delta R.T. -0.146 min
 Lab File: VX043353.D
 Acq: 10 Oct 2024 15:25



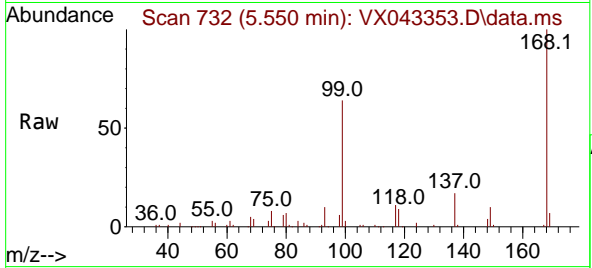
Tgt Ion: 75 Resp: 7493
 Ion Ratio Lower Upper
 75 100
 110 8.0 17.8 53.3#
 77 0.0 24.9 37.3#



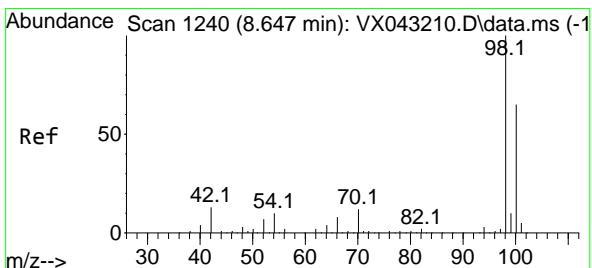
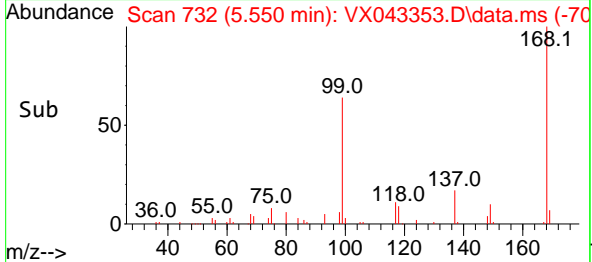
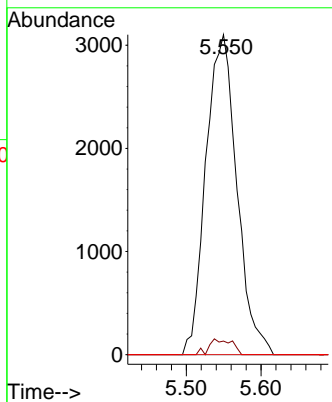


#38
 Carbon Tetrachloride
 Concen: 5.772 ug/l
 RT: 5.550 min Scan# 71
 Delta R.T. -0.122 min
 Lab File: VX043353.D
 Acq: 10 Oct 2024 15:25

Instrument :
 MSVOA_X
 ClientSampleId :

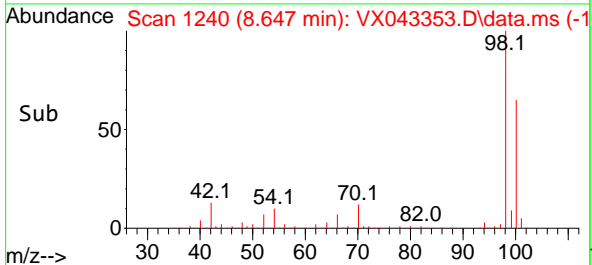
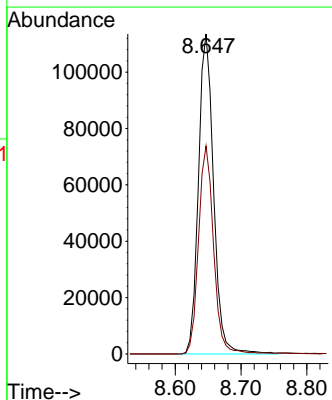
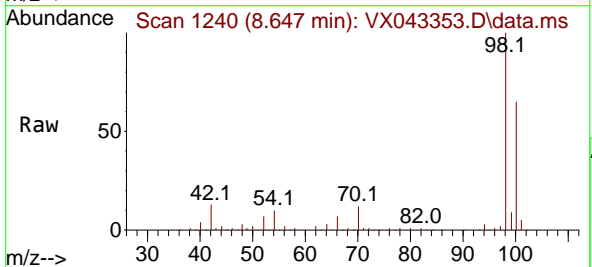


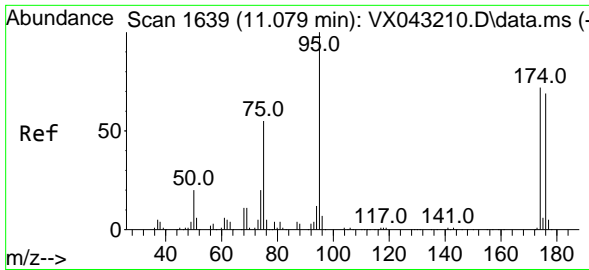
Tgt Ion:117 Resp: 8948
 Ion Ratio Lower Upper
 117 100
 119 4.3 77.7 116.5#
 121 0.0 24.3 36.5#



#50
 Toluene-d8
 Concen: 50.562 ug/l
 RT: 8.647 min Scan# 1240
 Delta R.T. -0.000 min
 Lab File: VX043353.D
 Acq: 10 Oct 2024 15:25

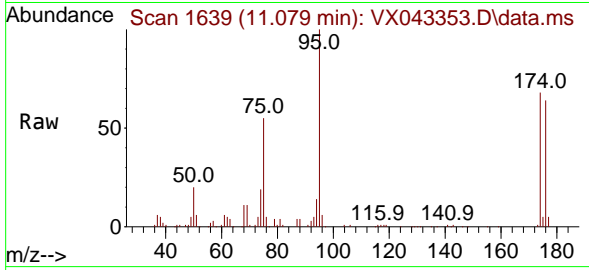
Tgt Ion: 98 Resp: 181619
 Ion Ratio Lower Upper
 98 100
 100 64.7 52.4 78.6



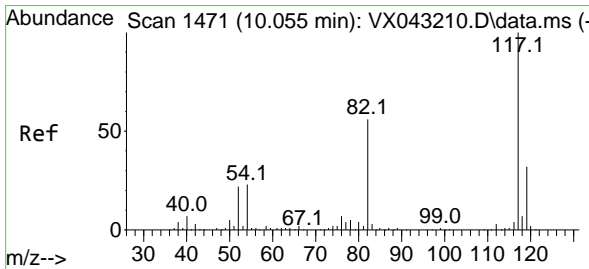
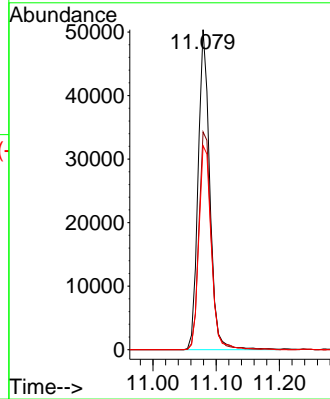
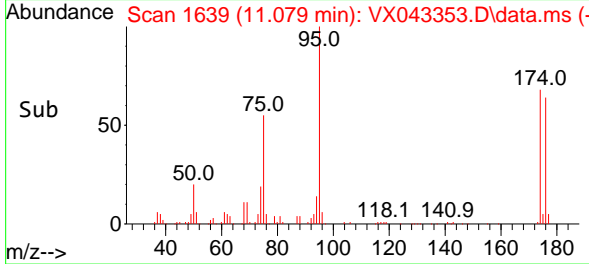


#62
 4-Bromofluorobenzene
 Concen: 49.539 ug/l
 RT: 11.079 min Scan# 1639
 Delta R.T. -0.000 min
 Lab File: VX043353.D
 Acq: 10 Oct 2024 15:25

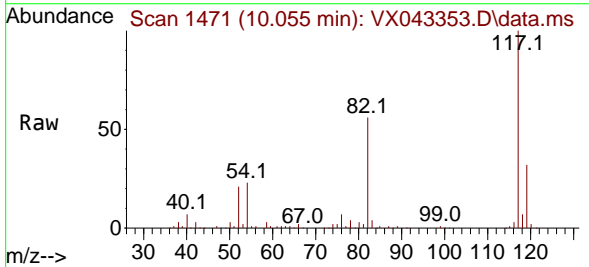
Instrument :
 MSVOA_X
 ClientSampleId :



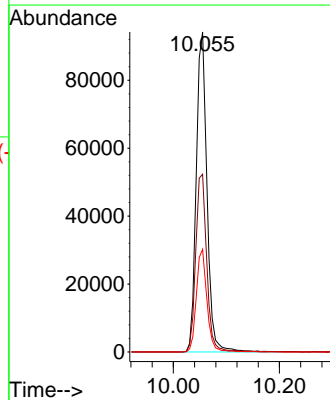
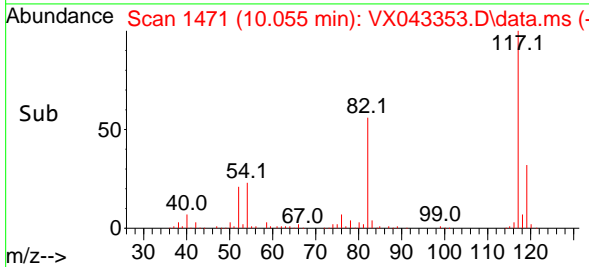
Tgt Ion: 95 Resp: 64645
 Ion Ratio Lower Upper
 95 100
 174 71.9 0.0 145.0
 176 68.2 0.0 143.0

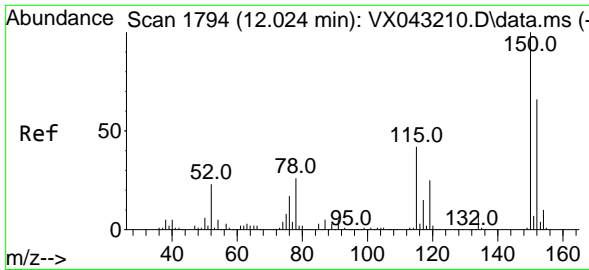


#63
 Chlorobenzene-d5
 Concen: 50.000 ug/l
 RT: 10.055 min Scan# 1471
 Delta R.T. -0.000 min
 Lab File: VX043353.D
 Acq: 10 Oct 2024 15:25



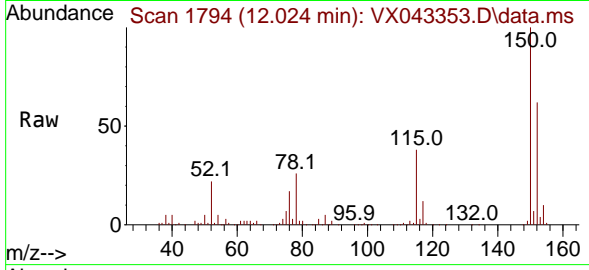
Tgt Ion: 117 Resp: 132099
 Ion Ratio Lower Upper
 117 100
 82 55.5 45.0 67.6
 119 32.1 25.3 37.9



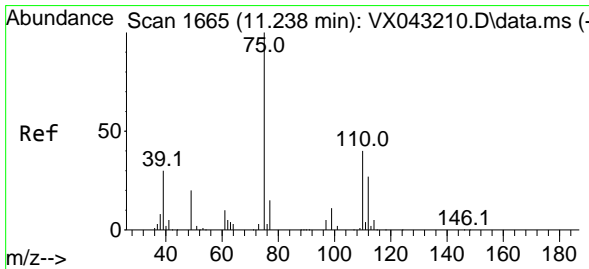
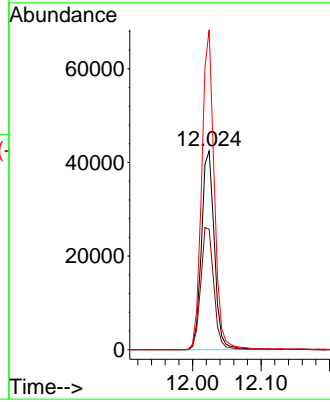
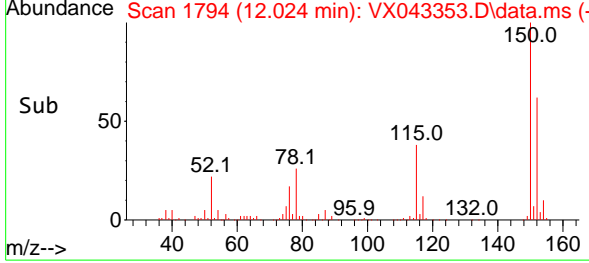


#72
 1,4-Dichlorobenzene-d4
 Concen: 50.000 ug/l
 RT: 12.024 min Scan# 1
 Delta R.T. -0.000 min
 Lab File: VX043353.D
 Acq: 10 Oct 2024 15:25

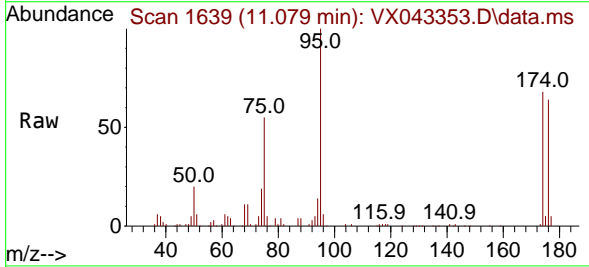
Instrument :
 MSVOA_X
 ClientSampleId :



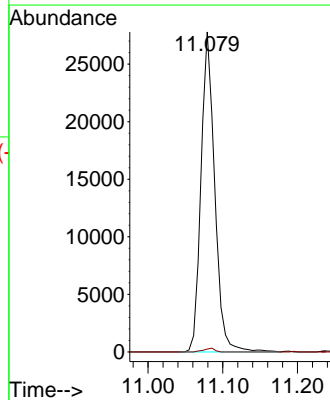
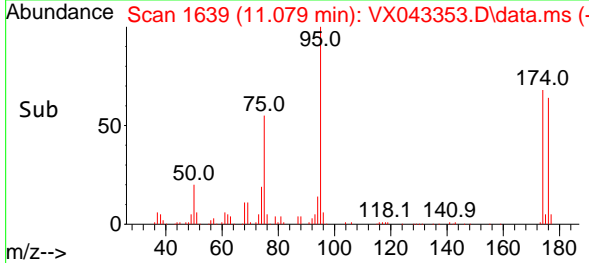
Tgt Ion:152 Resp: 55883
 Ion Ratio Lower Upper
 152 100
 115 62.3 44.1 132.3
 150 155.9 0.0 347.4

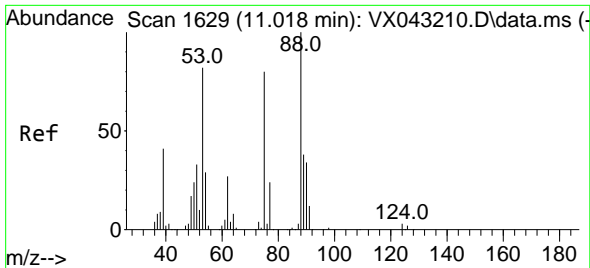


#76
 1,2,3-Trichloropropane
 Concen: 28.608 ug/l
 RT: 11.079 min Scan# 1639
 Delta R.T. -0.159 min
 Lab File: VX043353.D
 Acq: 10 Oct 2024 15:25



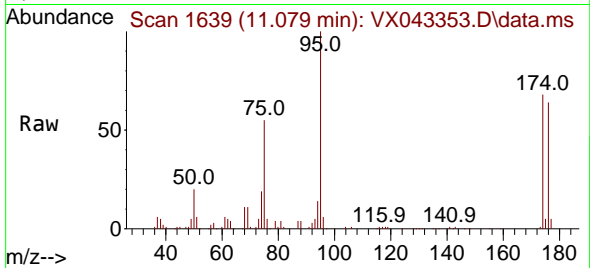
Tgt Ion: 75 Resp: 35461
 Ion Ratio Lower Upper
 75 100
 77 0.9 22.0 66.0#





#81
 trans-1,4-Dichloro-2-butene
 Concen: 74.142 ug/l
 RT: 11.079 min Scan# 1
 Delta R.T. 0.061 min
 Lab File: VX043353.D
 Acq: 10 Oct 2024 15:25

Instrument :
 MSVOA_X
 ClientSampleId :



Tgt Ion: 75 Resp: 35461
 Ion Ratio Lower Upper
 75 100
 53 0.0 83.9 125.9#
 89 0.0 38.6 58.0#

