

Data Path : Z:\voasrv\HPCHEM1\MSVOA_X\Data\VX101025\
 Data File : VX048111.D
 Acq On : 10 Oct 2025 14:53
 Operator : JC/MD
 Sample : Q3324-09
 Misc : 5.0mL/MSVOA_X/WATER
 ALS Vial : 13 Sample Multiplier: 1

Instrument :
 MSVOA_X
 ClientSampleId :
 BP-VPB-184-GW-820-822

Quant Time: Oct 10 23:49:14 2025
 Quant Method : Z:\voasrv\HPCHEM1\MSVOA_X\Method\82X091625W.M
 Quant Title : SW846 8260
 QLast Update : Wed Sep 17 06:39:58 2025
 Response via : Initial Calibration

Compound	R.T.	QIon	Response	Conc	Units	Dev(Min)

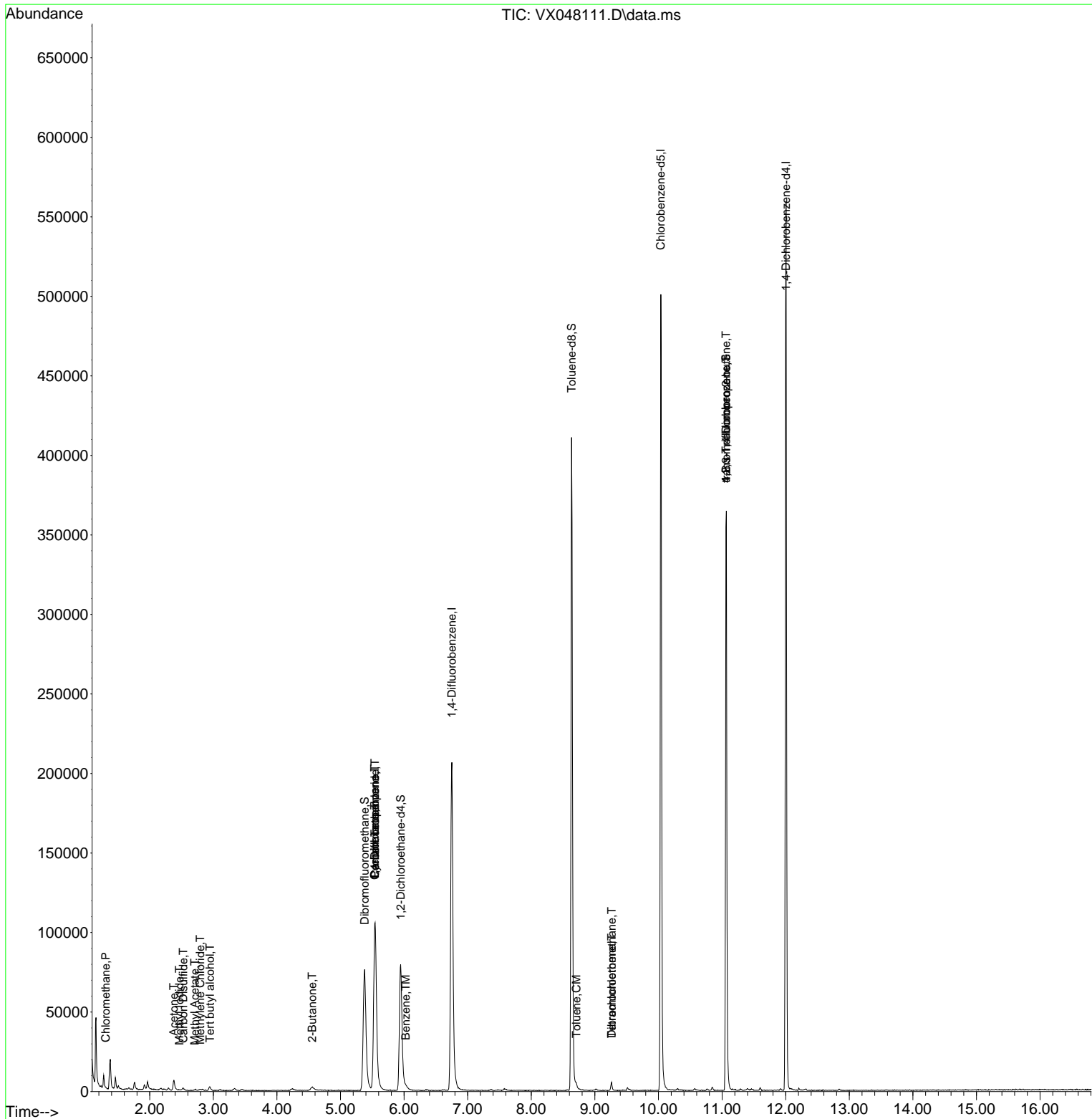
Internal Standards						
1) Pentafluorobenzene	5.544	168	107357	50.000	ug/l	0.00
34) 1,4-Difluorobenzene	6.751	114	223217	50.000	ug/l	0.00
63) Chlorobenzene-d5	10.037	117	233516	50.000	ug/l	0.00
72) 1,4-Dichlorobenzene-d4	12.006	152	113061	50.000	ug/l	0.00
System Monitoring Compounds						
33) 1,2-Dichloroethane-d4	5.946	65	88338	51.694	ug/l	0.00
Spiked Amount	50.000	Range 78 - 117	Recovery	=	103.380%	
35) Dibromofluoromethane	5.379	113	74061	49.472	ug/l	0.00
Spiked Amount	50.000	Range 75 - 124	Recovery	=	98.940%	
50) Toluene-d8	8.635	98	251294	48.513	ug/l	0.00
Spiked Amount	50.000	Range 92 - 112	Recovery	=	97.020%	
62) 4-Bromofluorobenzene	11.061	95	106566	54.207	ug/l	0.00
Spiked Amount	50.000	Range 83 - 123	Recovery	=	108.420%	
Target Compounds						
						Qvalue
3) Chloromethane	1.307	50	509	0.348	ug/l	99
10) Methyl Iodide	2.465	142	432	0.223	ug/l #	59
11) Tert butyl alcohol	2.947	59	1410	7.409	ug/l #	72
16) Acetone	2.380	43	8826	11.879	ug/l	96
17) Carbon Disulfide	2.526	76	841	0.241	ug/l #	76
18) Methyl Acetate	2.709	43	461	0.279	ug/l #	54
20) Methylene Chloride	2.794	84	356	0.226	ug/l #	59
25) 2-Butanone	4.556	43	608	0.656	ug/l #	50
31) Cyclohexane	5.538	56	2708	1.199	ug/l #	19
36) 1,1-Dichloropropene	5.538	75	9374	4.285	ug/l #	49
38) Carbon Tetrachloride	5.544	117	11290	4.750	ug/l #	19
40) Benzene	6.025	78	1483	0.223	ug/l #	1
52) Toluene	8.708	92	1032	0.252	ug/l #	65
60) Dibromochloromethane	9.263	129	886	0.487	ug/l #	11
64) Tetrachloroethene	9.263	164	927	0.609	ug/l #	83
76) 1,2,3-Trichloropropane	11.061	75	56722	24.779	ug/l #	39
81) trans-1,4-Dichloro-2-b...	11.061	75	56722	63.189	ug/l #	8

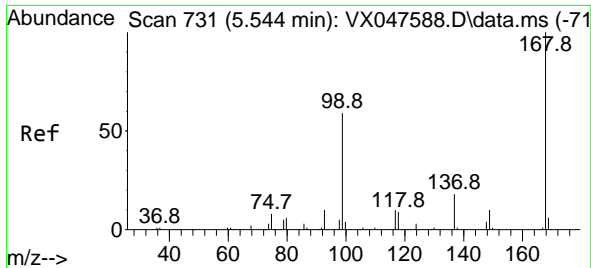
(#) = qualifier out of range (m) = manual integration (+) = signals summed

Data Path : Z:\voasrv\HPCHEM1\MSVOA_X\Data\VX101025\
 Data File : VX048111.D
 Acq On : 10 Oct 2025 14:53
 Operator : JC/MD
 Sample : Q3324-09
 Misc : 5.0mL/MSVOA_X/WATER
 ALS Vial : 13 Sample Multiplier: 1

Instrument :
 MSVOA_X
 ClientSampleId :
 BP-VPB-184-GW-820-822

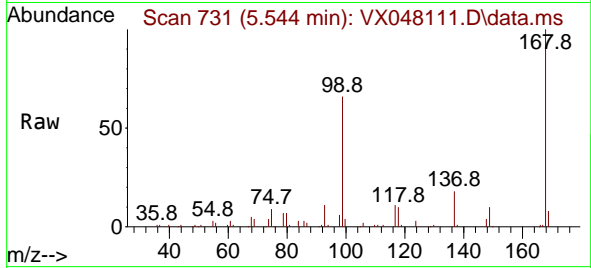
Quant Time: Oct 10 23:49:14 2025
 Quant Method : Z:\voasrv\HPCHEM1\MSVOA_X\Method\82X091625W.M
 Quant Title : SW846 8260
 QLast Update : Wed Sep 17 06:39:58 2025
 Response via : Initial Calibration



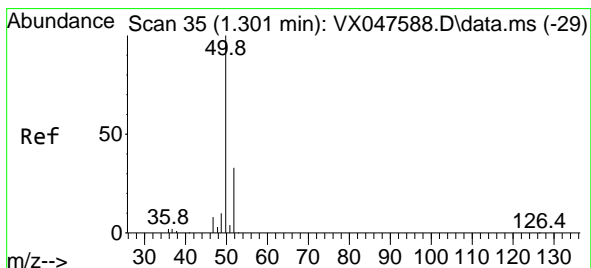
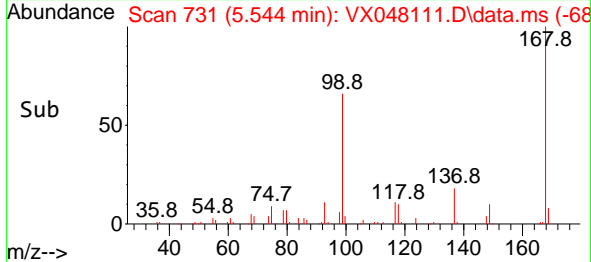
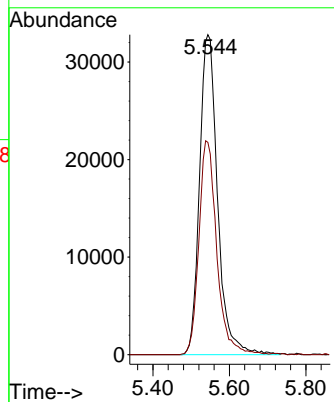


#1
 Pentafluorobenzene
 Concen: 50.000 ug/l
 RT: 5.544 min Scan# 71
 Delta R.T. -0.000 min
 Lab File: VX048111.D
 Acq: 10 Oct 2025 14:53

Instrument : MSVOA_X
 ClientSampleId : BP-VPB-184-GW-820-822

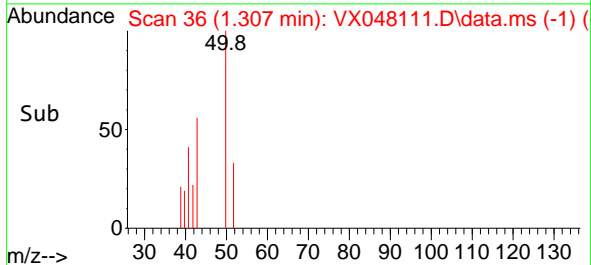
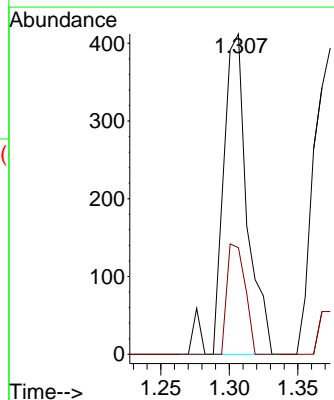
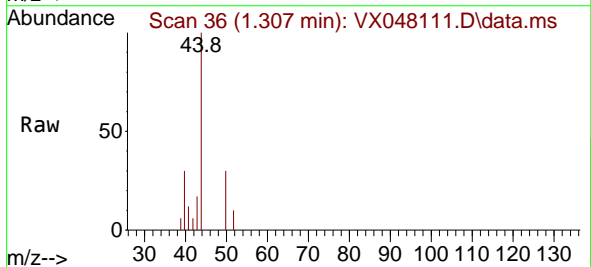


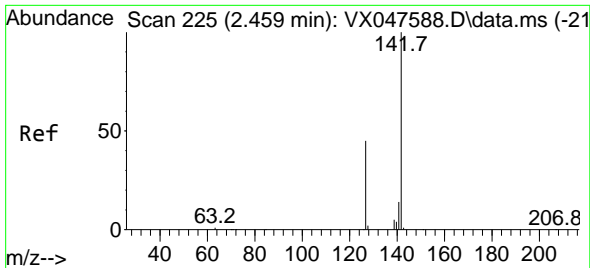
Tgt Ion:168 Resp: 107357
 Ion Ratio Lower Upper
 168 100
 99 66.4 48.8 73.2



#3
 Chloromethane
 Concen: 0.348 ug/l
 RT: 1.307 min Scan# 36
 Delta R.T. 0.006 min
 Lab File: VX048111.D
 Acq: 10 Oct 2025 14:53

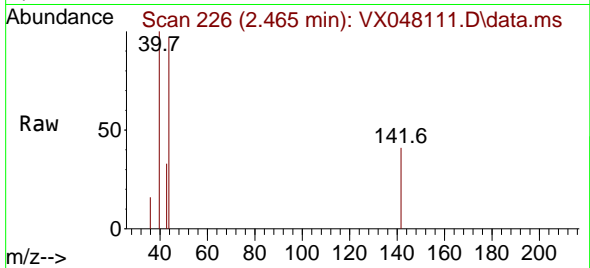
Tgt Ion: 50 Resp: 509
 Ion Ratio Lower Upper
 50 100
 52 33.3 26.1 39.1



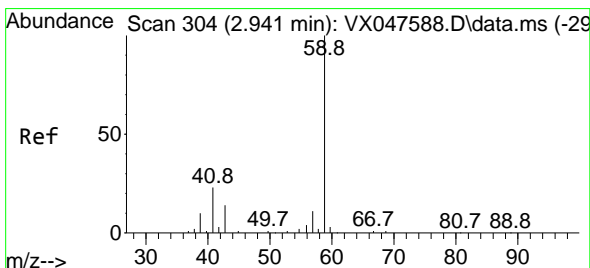
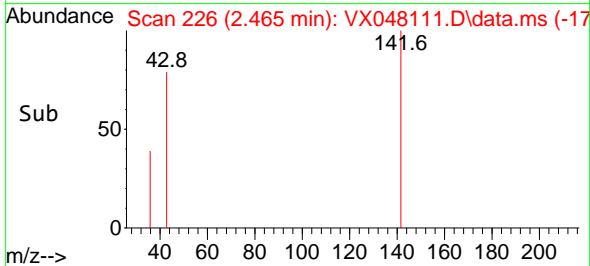
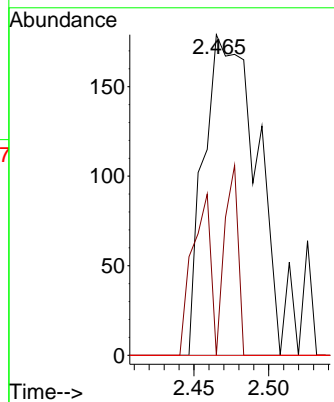


#10
Methyl Iodide
Concen: 0.223 ug/l
RT: 2.465 min Scan# 21
Delta R.T. 0.006 min
Lab File: VX048111.D
Acq: 10 Oct 2025 14:53

Instrument : MSVOA_X
ClientSampleId : BP-VPB-184-GW-820-822

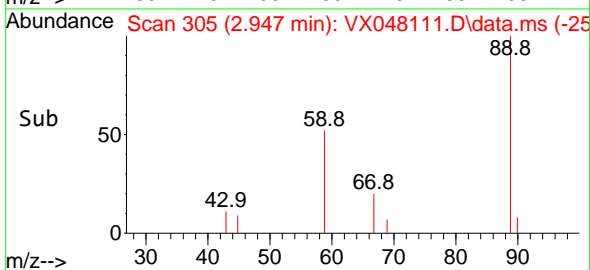
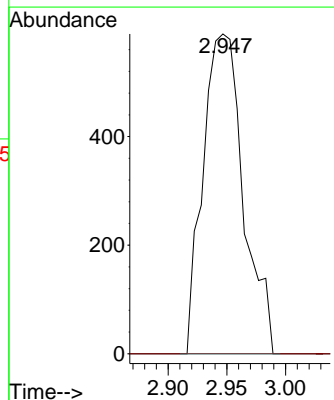
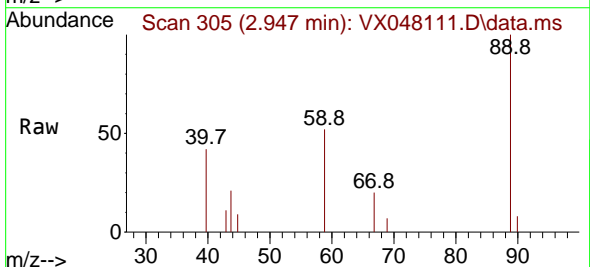


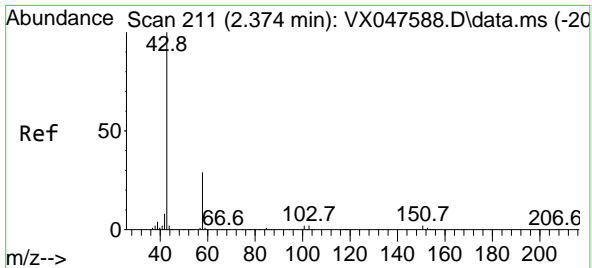
Tgt Ion:142 Resp: 432
Ion Ratio Lower Upper
142 100
127 18.1 37.2 55.8#
141 0.0 11.4 17.0#



#11
Tert butyl alcohol
Concen: 7.409 ug/l
RT: 2.947 min Scan# 305
Delta R.T. 0.006 min
Lab File: VX048111.D
Acq: 10 Oct 2025 14:53

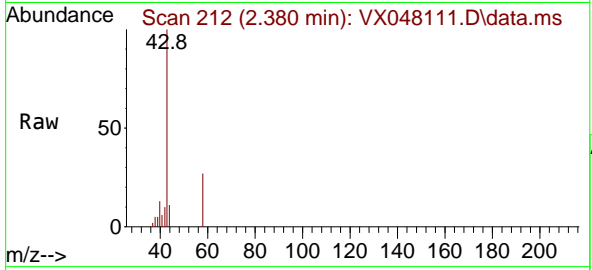
Tgt Ion: 59 Resp: 1410
Ion Ratio Lower Upper
59 100
57 0.0 8.3 12.5#



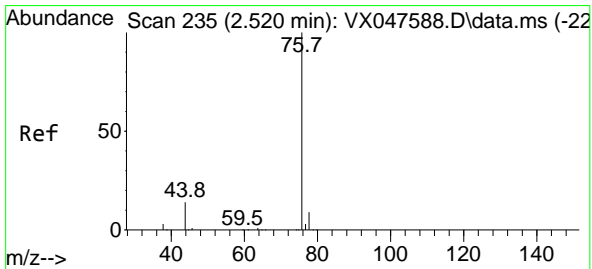
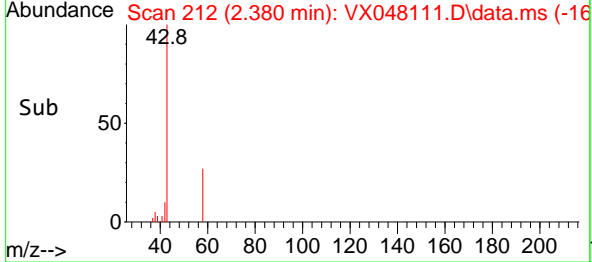
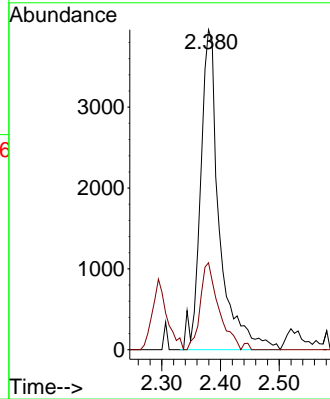


#16
 Acetone
 Concen: 11.879 ug/l
 RT: 2.380 min Scan# 211
 Delta R.T. 0.006 min
 Lab File: VX048111.D
 Acq: 10 Oct 2025 14:53

Instrument : MSVOA_X
 ClientSampleId : BP-VPB-184-GW-820-822

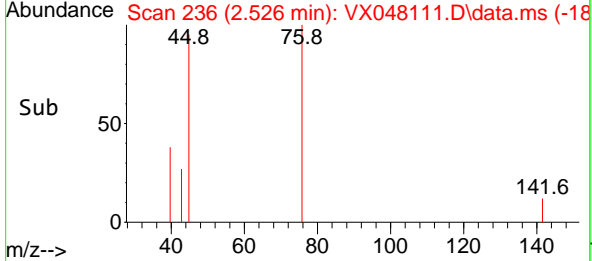
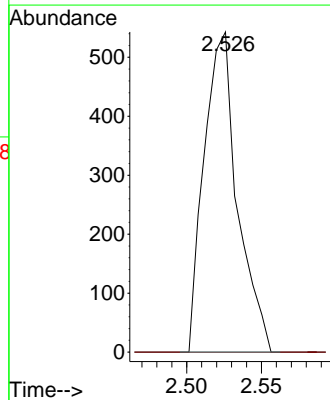
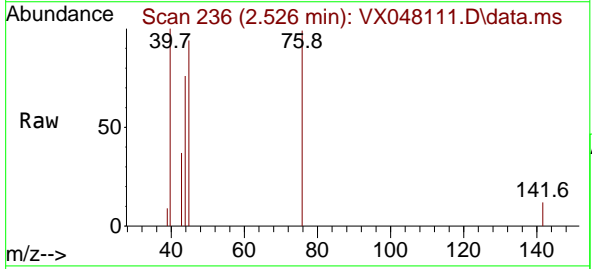


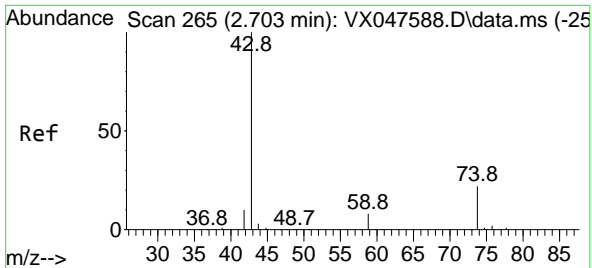
Tgt Ion: 43 Resp: 8826
 Ion Ratio Lower Upper
 43 100
 58 27.2 23.4 35.0



#17
 Carbon Disulfide
 Concen: 0.241 ug/l
 RT: 2.526 min Scan# 236
 Delta R.T. 0.006 min
 Lab File: VX048111.D
 Acq: 10 Oct 2025 14:53

Tgt Ion: 76 Resp: 841
 Ion Ratio Lower Upper
 76 100
 78 0.0 6.8 10.2#

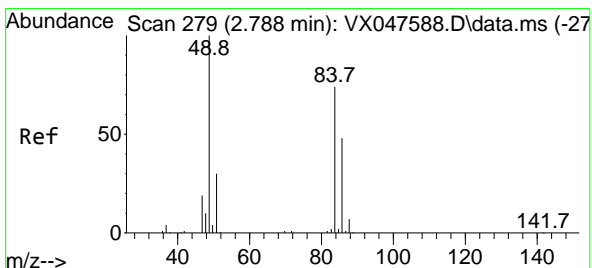
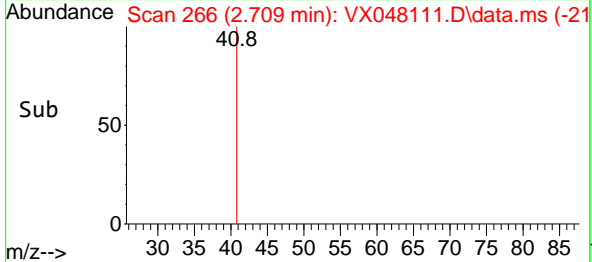
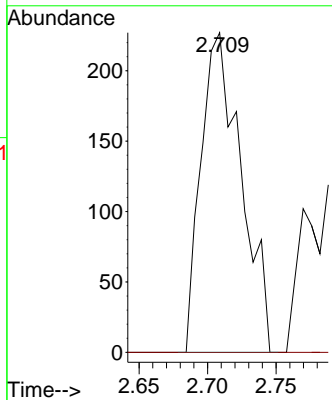
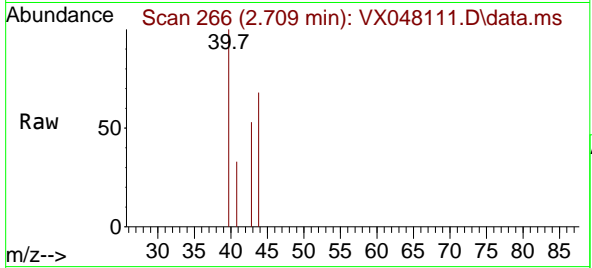




#18
 Methyl Acetate
 Concen: 0.279 ug/l
 RT: 2.709 min Scan# 20
 Delta R.T. 0.006 min
 Lab File: VX048111.D
 Acq: 10 Oct 2025 14:53

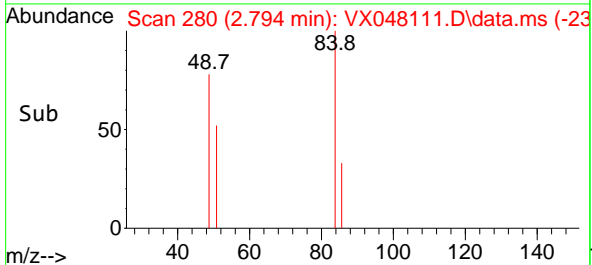
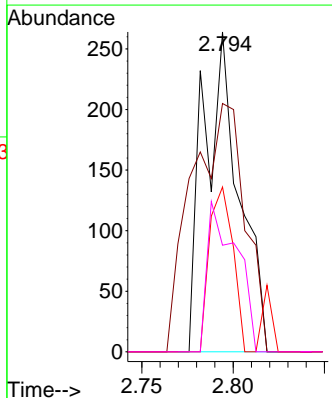
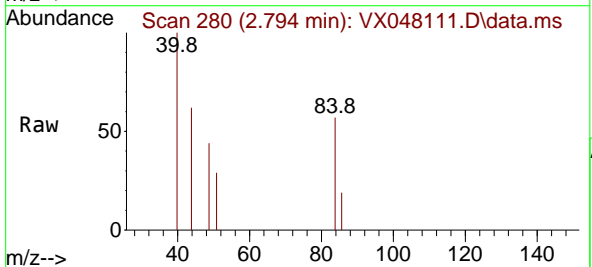
Instrument : MSVOA_X
 ClientSampleId : BP-VPB-184-GW-820-822

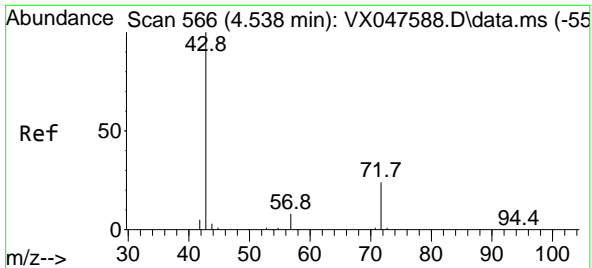
Tgt Ion: 43 Resp: 461
 Ion Ratio Lower Upper
 43 100
 74 0.0 17.4 26.2#



#20
 Methylene Chloride
 Concen: 0.226 ug/l
 RT: 2.794 min Scan# 280
 Delta R.T. 0.006 min
 Lab File: VX048111.D
 Acq: 10 Oct 2025 14:53

Tgt Ion: 84 Resp: 356
 Ion Ratio Lower Upper
 84 100
 49 77.7 108.6 162.8#
 51 51.5 32.6 48.8#
 86 33.3 52.0 78.0#

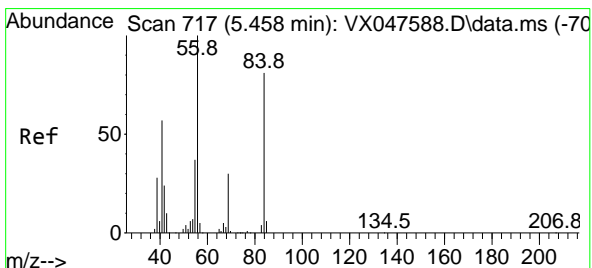
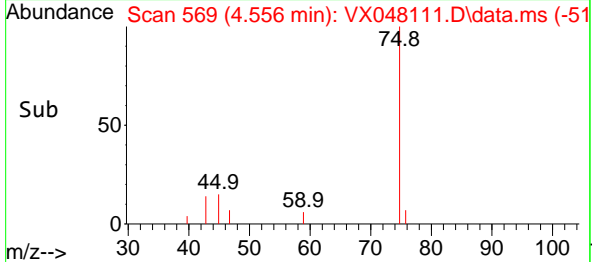
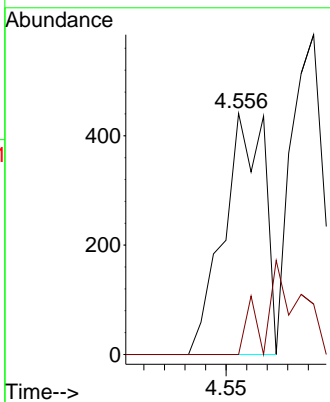
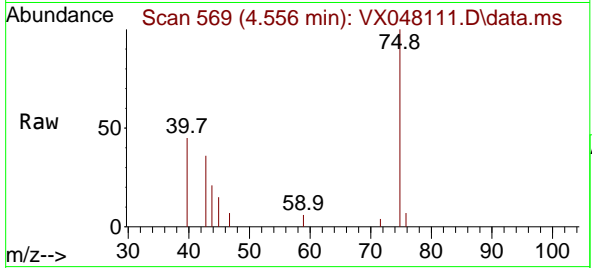




#25
 2-Butanone
 Concen: 0.656 ug/l
 RT: 4.556 min Scan# 50
 Delta R.T. 0.018 min
 Lab File: VX048111.D
 Acq: 10 Oct 2025 14:53

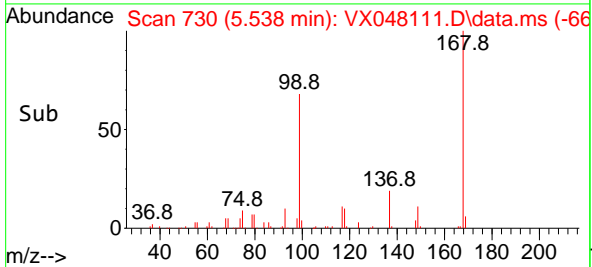
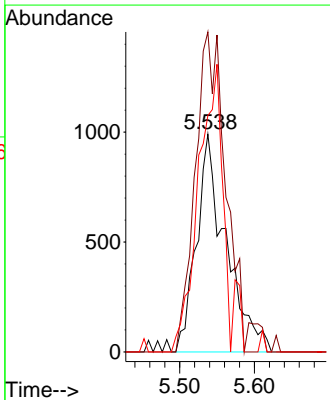
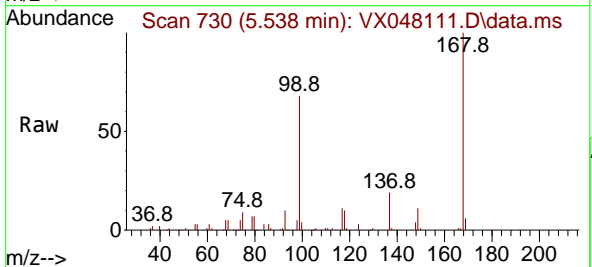
Instrument : MSVOA_X
 ClientSampleId : BP-VPB-184-GW-820-822

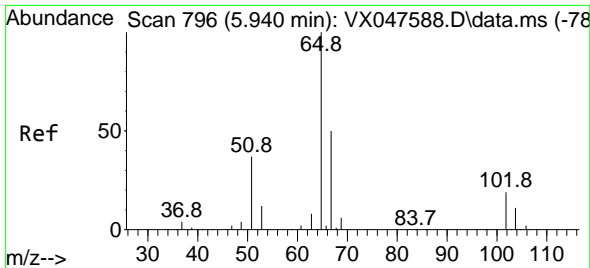
Tgt Ion: 43 Resp: 608
 Ion Ratio Lower Upper
 43 100
 72 0.0 20.1 30.1#



#31
 Cyclohexane
 Concen: 1.199 ug/l
 RT: 5.538 min Scan# 730
 Delta R.T. 0.079 min
 Lab File: VX048111.D
 Acq: 10 Oct 2025 14:53

Tgt Ion: 56 Resp: 2708
 Ion Ratio Lower Upper
 56 100
 69 146.9 23.8 35.8#
 84 108.6 64.6 97.0#

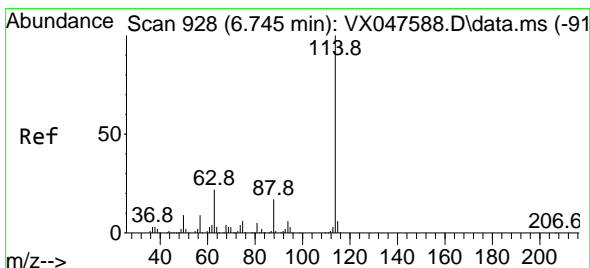
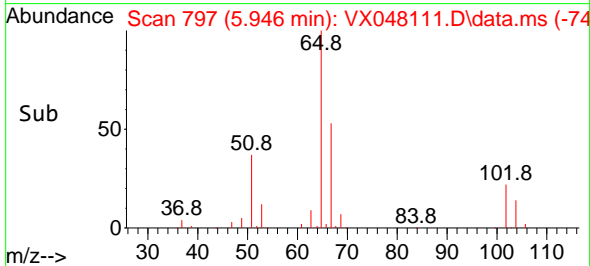
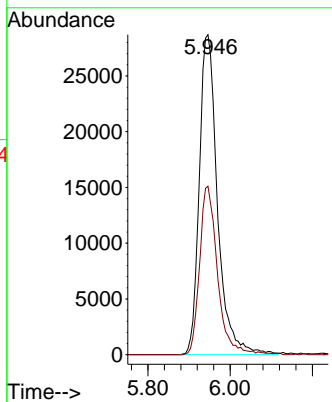
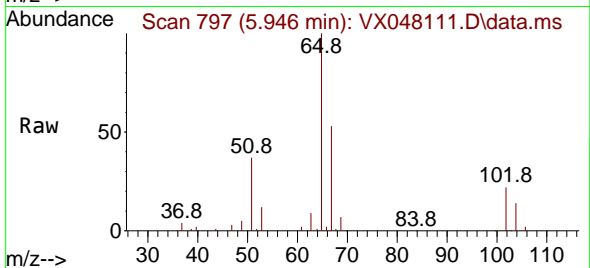




#33
 1,2-Dichloroethane-d4
 Concen: 51.694 ug/l
 RT: 5.946 min Scan# 796
 Delta R.T. 0.006 min
 Lab File: VX048111.D
 Acq: 10 Oct 2025 14:53

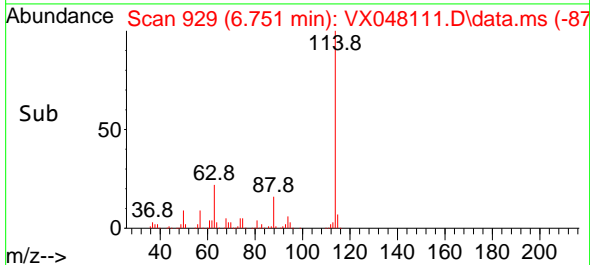
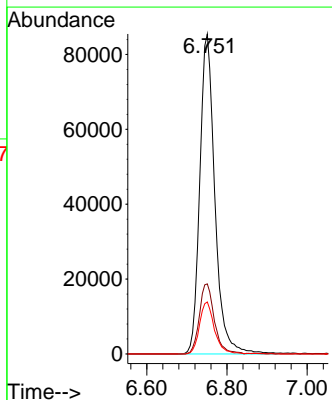
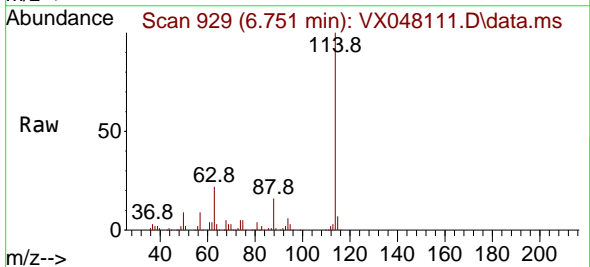
Instrument : MSVOA_X
 ClientSampleId : BP-VPB-184-GW-820-822

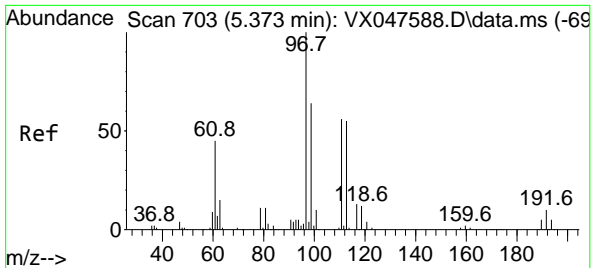
Tgt Ion: 65 Resp: 88338
 Ion Ratio Lower Upper
 65 100
 67 51.7 0.0 103.0



#34
 1,4-Difluorobenzene
 Concen: 50.000 ug/l
 RT: 6.751 min Scan# 929
 Delta R.T. 0.006 min
 Lab File: VX048111.D
 Acq: 10 Oct 2025 14:53

Tgt Ion: 114 Resp: 223217
 Ion Ratio Lower Upper
 114 100
 63 21.9 0.0 44.0
 88 16.2 0.0 34.2

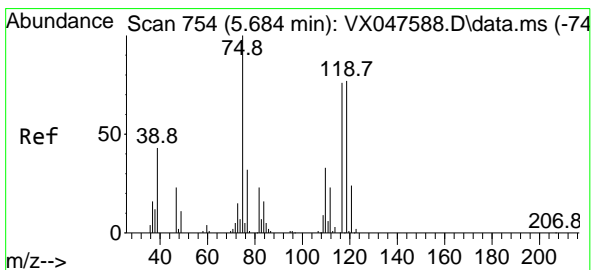
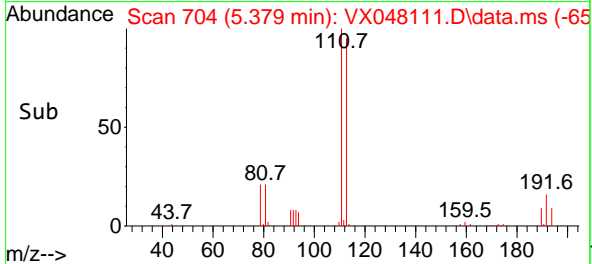
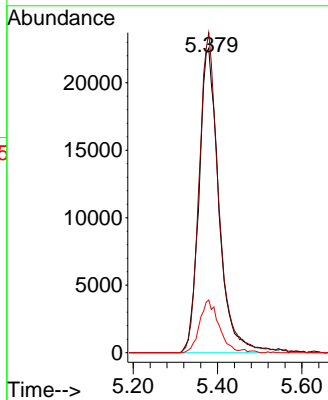
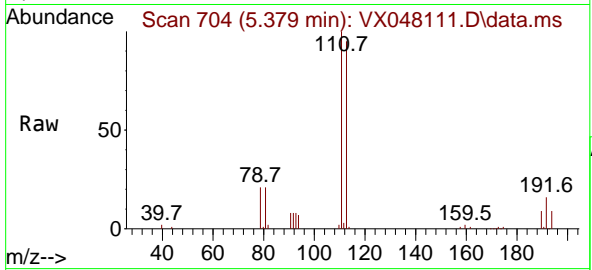




#35
 Dibromofluoromethane
 Concen: 49.472 ug/l
 RT: 5.379 min Scan# 704
 Delta R.T. 0.006 min
 Lab File: VX048111.D
 Acq: 10 Oct 2025 14:53

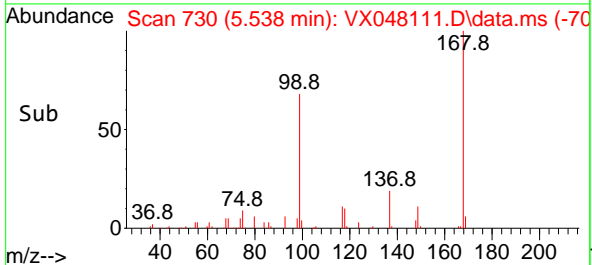
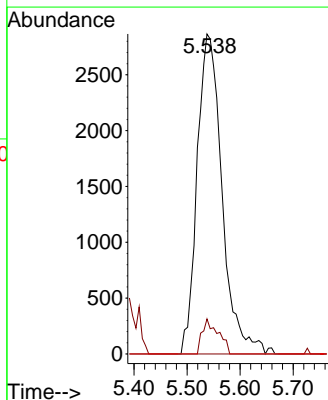
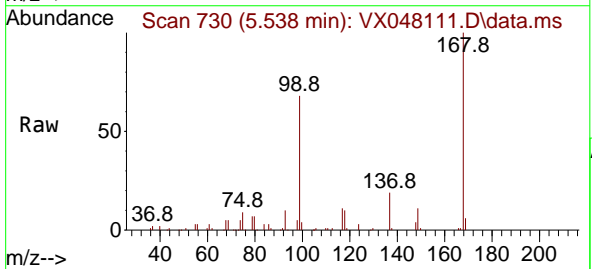
Instrument : MSVOA_X
 Client SampleId : BP-VPB-184-GW-820-822

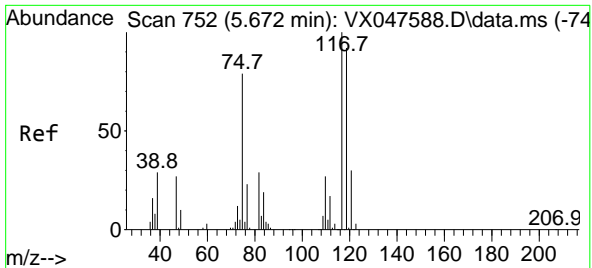
Tgt Ion	Resp	Lower	Upper
113	100		
111	102.9	80.9	121.3
192	16.5	14.2	21.4



#36
 1,1-Dichloropropene
 Concen: 4.285 ug/l
 RT: 5.538 min Scan# 730
 Delta R.T. -0.146 min
 Lab File: VX048111.D
 Acq: 10 Oct 2025 14:53

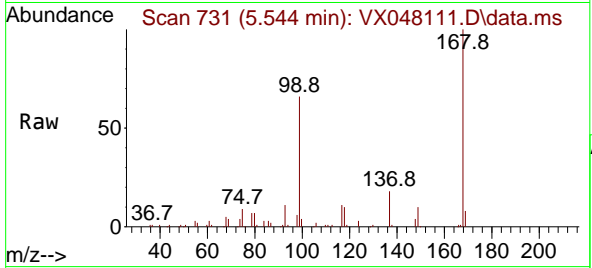
Tgt Ion	Resp	Lower	Upper
75	100		
110	7.0	16.7	50.1#
77	0.0	24.3	36.5#



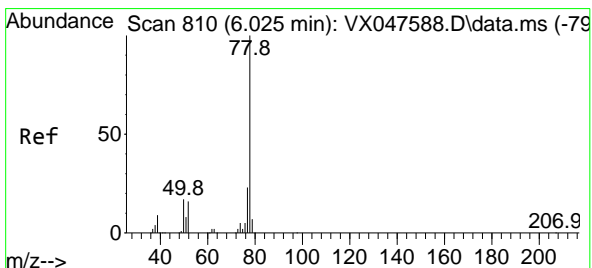
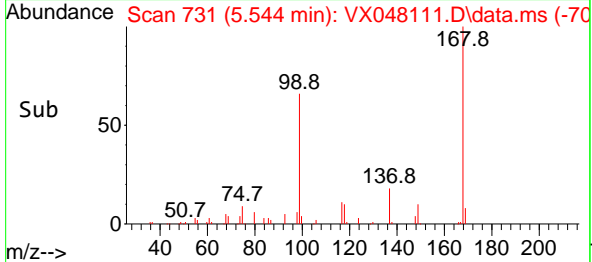
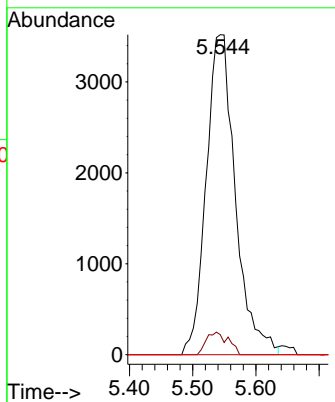


#38
 Carbon Tetrachloride
 Concen: 4.750 ug/l
 RT: 5.544 min Scan# 711
 Delta R.T. -0.128 min
 Lab File: VX048111.D
 Acq: 10 Oct 2025 14:53

Instrument : MSVOA_X
 ClientSampleId : BP-VPB-184-GW-820-822

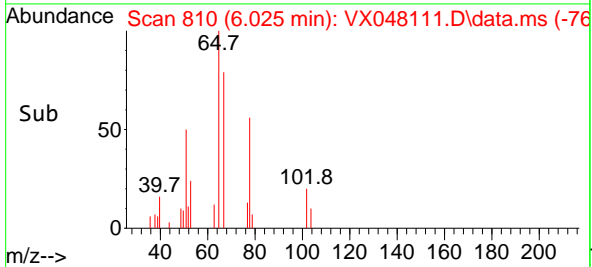
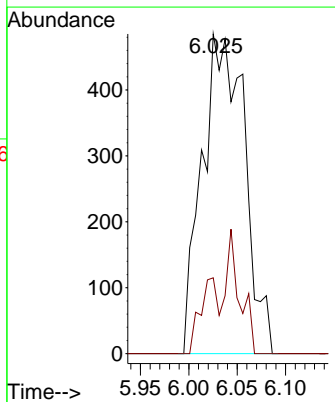
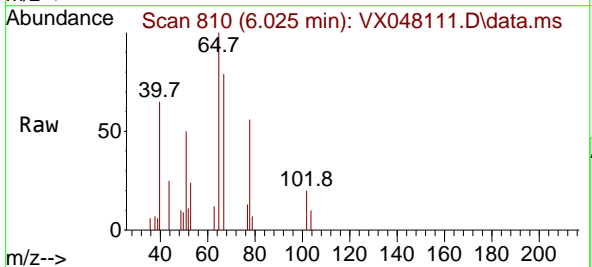


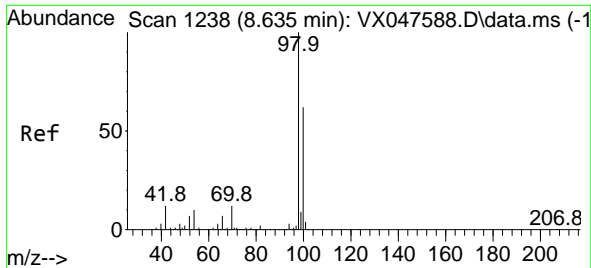
Tgt Ion: 117 Resp: 11290
 Ion Ratio Lower Upper
 117 100
 119 6.2 73.4 110.2#
 121 0.0 23.8 35.6#



#40
 Benzene
 Concen: 0.223 ug/l
 RT: 6.025 min Scan# 810
 Delta R.T. -0.000 min
 Lab File: VX048111.D
 Acq: 10 Oct 2025 14:53

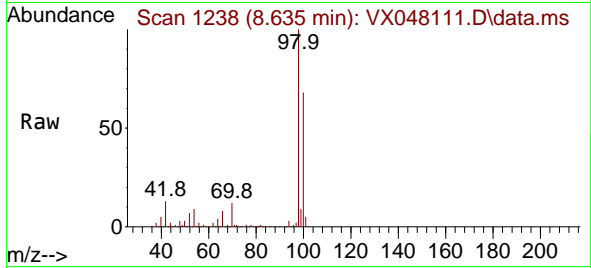
Tgt Ion: 78 Resp: 1483
 Ion Ratio Lower Upper
 78 100
 77 123.7 18.8 28.2#



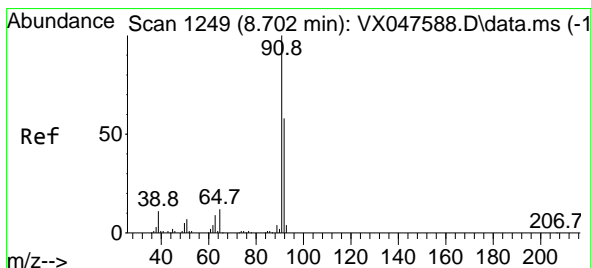
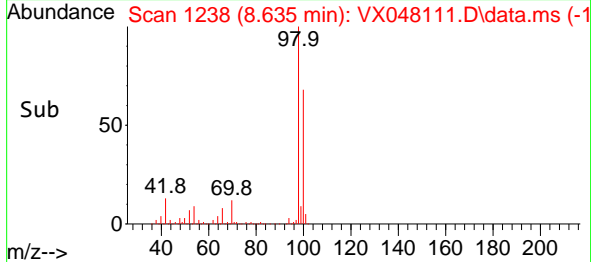
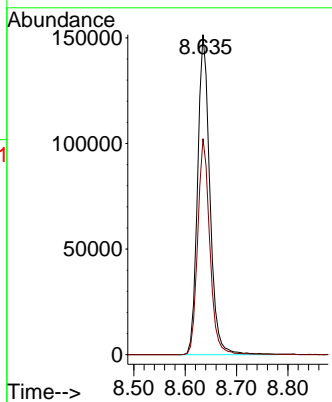


#50
 Toluene-d8
 Concen: 48.513 ug/l
 RT: 8.635 min Scan# 11
 Delta R.T. -0.000 min
 Lab File: VX048111.D
 Acq: 10 Oct 2025 14:53

Instrument :
 MSVOA_X
 ClientSampleId :
 BP-VPB-184-GW-820-822

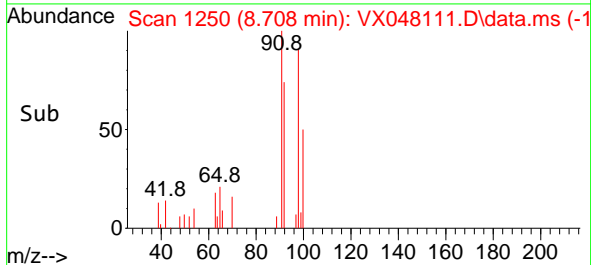
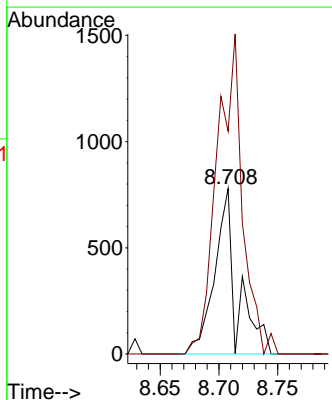
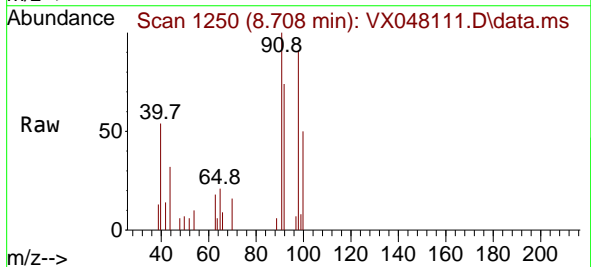


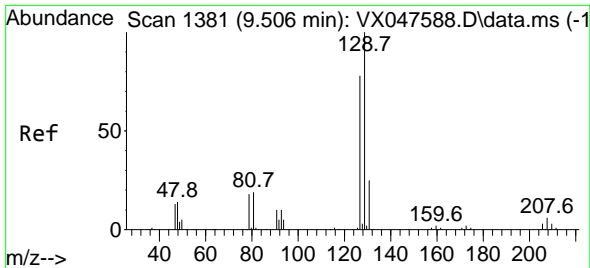
Tgt Ion: 98 Resp: 251294
 Ion Ratio Lower Upper
 98 100
 100 66.6 53.0 79.4



#52
 Toluene
 Concen: 0.252 ug/l
 RT: 8.708 min Scan# 1250
 Delta R.T. 0.006 min
 Lab File: VX048111.D
 Acq: 10 Oct 2025 14:53

Tgt Ion: 92 Resp: 1032
 Ion Ratio Lower Upper
 92 100
 91 220.2 137.1 205.7#

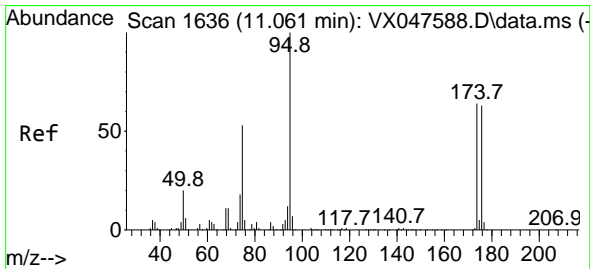
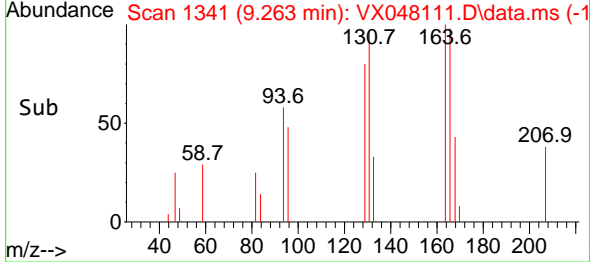
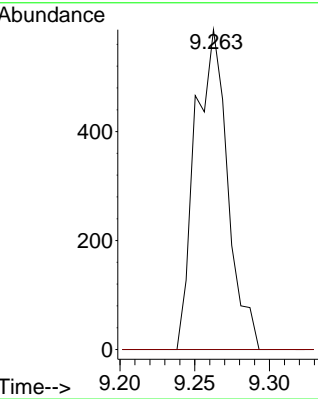
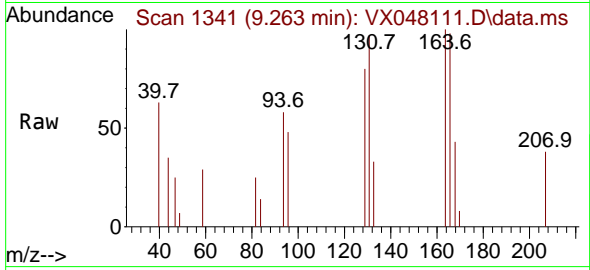




#60
 Dibromochloromethane
 Concen: 0.487 ug/l
 RT: 9.263 min Scan# 1341
 Delta R.T. -0.244 min
 Lab File: VX048111.D
 Acq: 10 Oct 2025 14:53

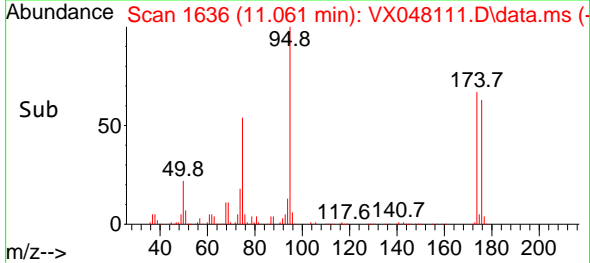
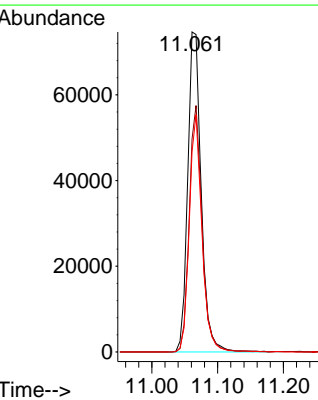
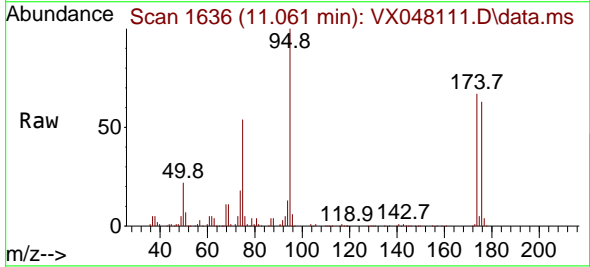
Instrument : MSVOA_X
 ClientSampleId : BP-VPB-184-GW-820-822

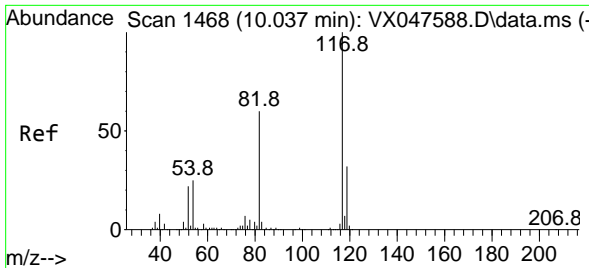
Tgt Ion:129 Resp: 886
 Ion Ratio Lower Upper
 129 100
 127 0.0 38.4 115.2#



#62
 4-Bromofluorobenzene
 Concen: 54.207 ug/l
 RT: 11.061 min Scan# 1636
 Delta R.T. -0.000 min
 Lab File: VX048111.D
 Acq: 10 Oct 2025 14:53

Tgt Ion: 95 Resp: 106566
 Ion Ratio Lower Upper
 95 100
 174 73.7 0.0 141.6
 176 69.7 0.0 138.4



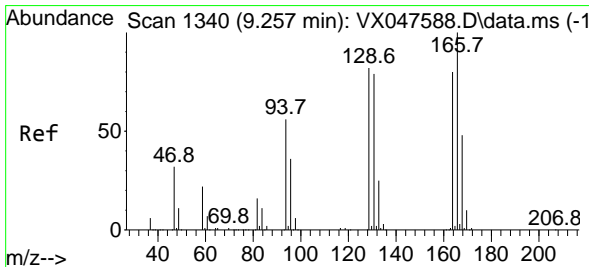
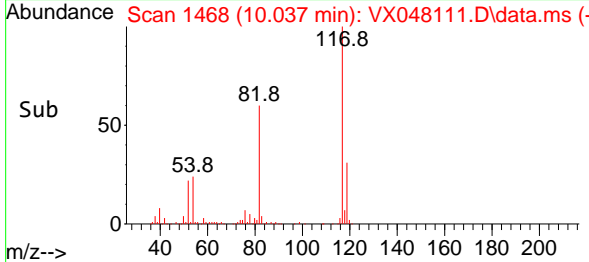
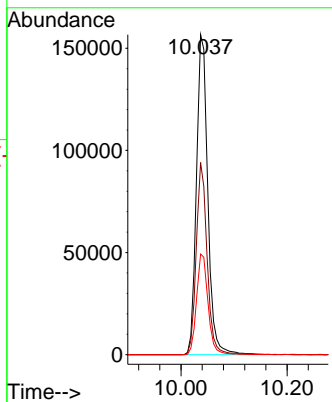
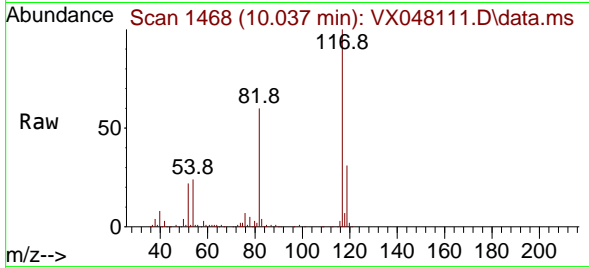


#63
 Chlorobenzene-d5
 Concen: 50.000 ug/l
 RT: 10.037 min Scan# 1468
 Delta R.T. -0.000 min
 Lab File: VX048111.D
 Acq: 10 Oct 2025 14:53

Instrument : MSVOA_X
 ClientSampleId : BP-VPB-184-GW-820-822

Tgt Ion:117 Resp: 233516

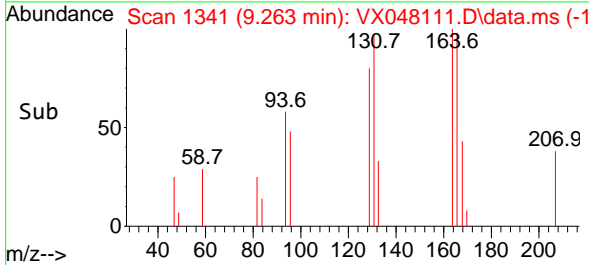
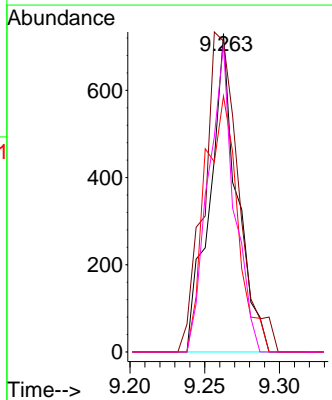
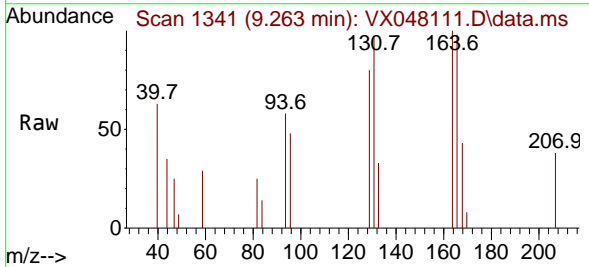
Ion	Ratio	Lower	Upper
117	100		
82	60.0	47.8	71.6
119	31.4	25.2	37.8

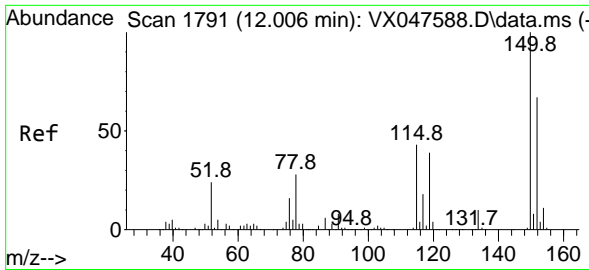


#64
 Tetrachloroethene
 Concen: 0.609 ug/l
 RT: 9.263 min Scan# 1341
 Delta R.T. 0.006 min
 Lab File: VX048111.D
 Acq: 10 Oct 2025 14:53

Tgt Ion:164 Resp: 927

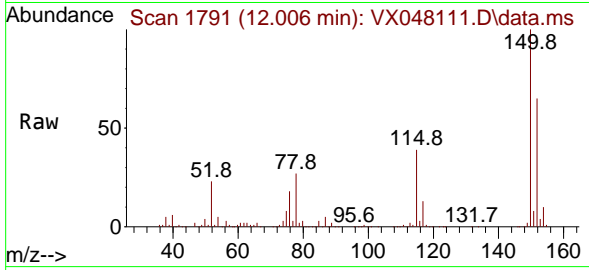
Ion	Ratio	Lower	Upper
164	100		
166	97.7	100.2	150.2#
129	80.4	81.8	122.6#
131	96.7	78.6	118.0



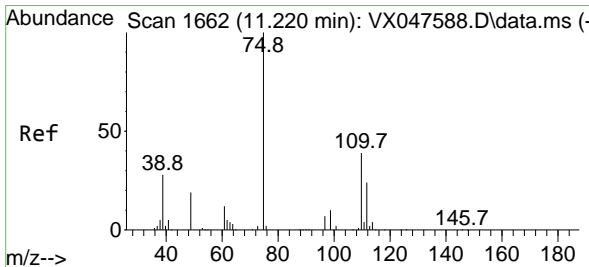
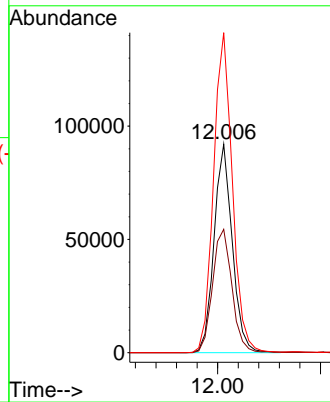
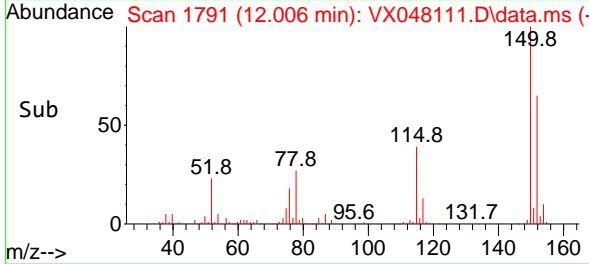


#72
 1,4-Dichlorobenzene-d4
 Concen: 50.000 ug/l
 RT: 12.006 min Scan# 11
 Delta R.T. -0.000 min
 Lab File: VX048111.D
 Acq: 10 Oct 2025 14:53

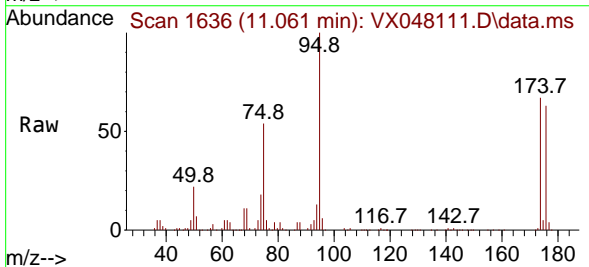
Instrument : MSVOA_X
 ClientSampleId : BP-VPB-184-GW-820-822



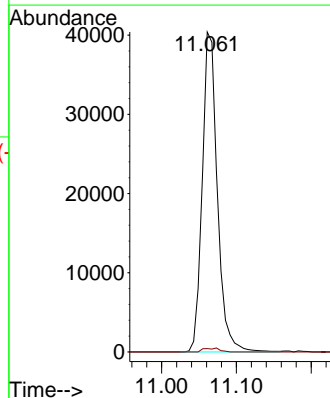
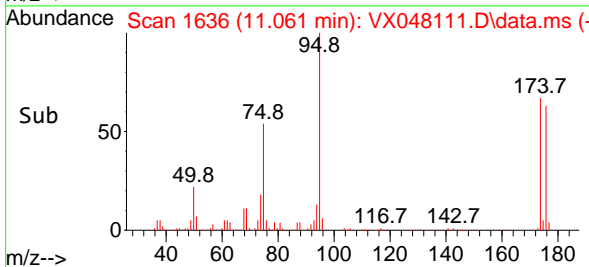
Tgt Ion:152 Resp: 113061
 Ion Ratio Lower Upper
 152 100
 115 63.1 44.9 134.5
 150 158.5 0.0 352.0

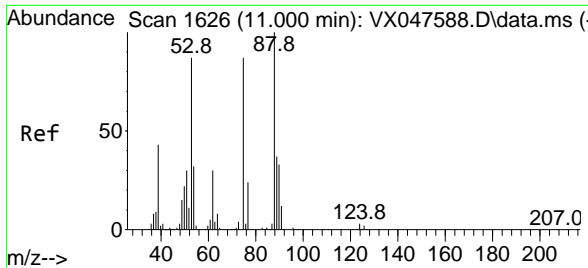


#76
 1,2,3-Trichloropropane
 Concen: 24.779 ug/l
 RT: 11.061 min Scan# 1636
 Delta R.T. -0.159 min
 Lab File: VX048111.D
 Acq: 10 Oct 2025 14:53



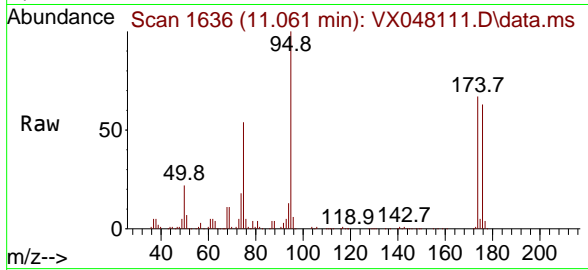
Tgt Ion: 75 Resp: 56722
 Ion Ratio Lower Upper
 75 100
 77 1.3 18.8 56.4#





#81
 trans-1,4-Dichloro-2-butene
 Concen: 63.189 ug/l
 RT: 11.061 min Scan# 10
 Delta R.T. 0.061 min
 Lab File: VX048111.D
 Acq: 10 Oct 2025 14:53

Instrument :
 MSVOA_X
 ClientSampleId :
 BP-VPB-184-GW-820-822



Tgt Ion: 75 Resp: 56722
 Ion Ratio Lower Upper
 75 100
 53 0.1 83.4 125.2#
 89 0.0 36.3 54.5#

