

Data Path : Z:\voasrv\HPCHEM1\MSVOA_X\Data\VX101025\
 Data File : VX048120.D
 Acq On : 10 Oct 2025 17:57
 Operator : JC/MD
 Sample : Q3311-12 200X
 Misc : 5.0mL/MSVOA_X/WATER
 ALS Vial : 22 Sample Multiplier: 1

Instrument :
 MSVOA_X
 ClientSampleId :
 MW-214D

Quant Time: Oct 10 23:53:18 2025
 Quant Method : Z:\voasrv\HPCHEM1\MSVOA_X\Method\82X091625W.M
 Quant Title : SW846 8260
 QLast Update : Wed Sep 17 06:39:58 2025
 Response via : Initial Calibration

Compound	R.T.	QIon	Response	Conc	Units	Dev(Min)

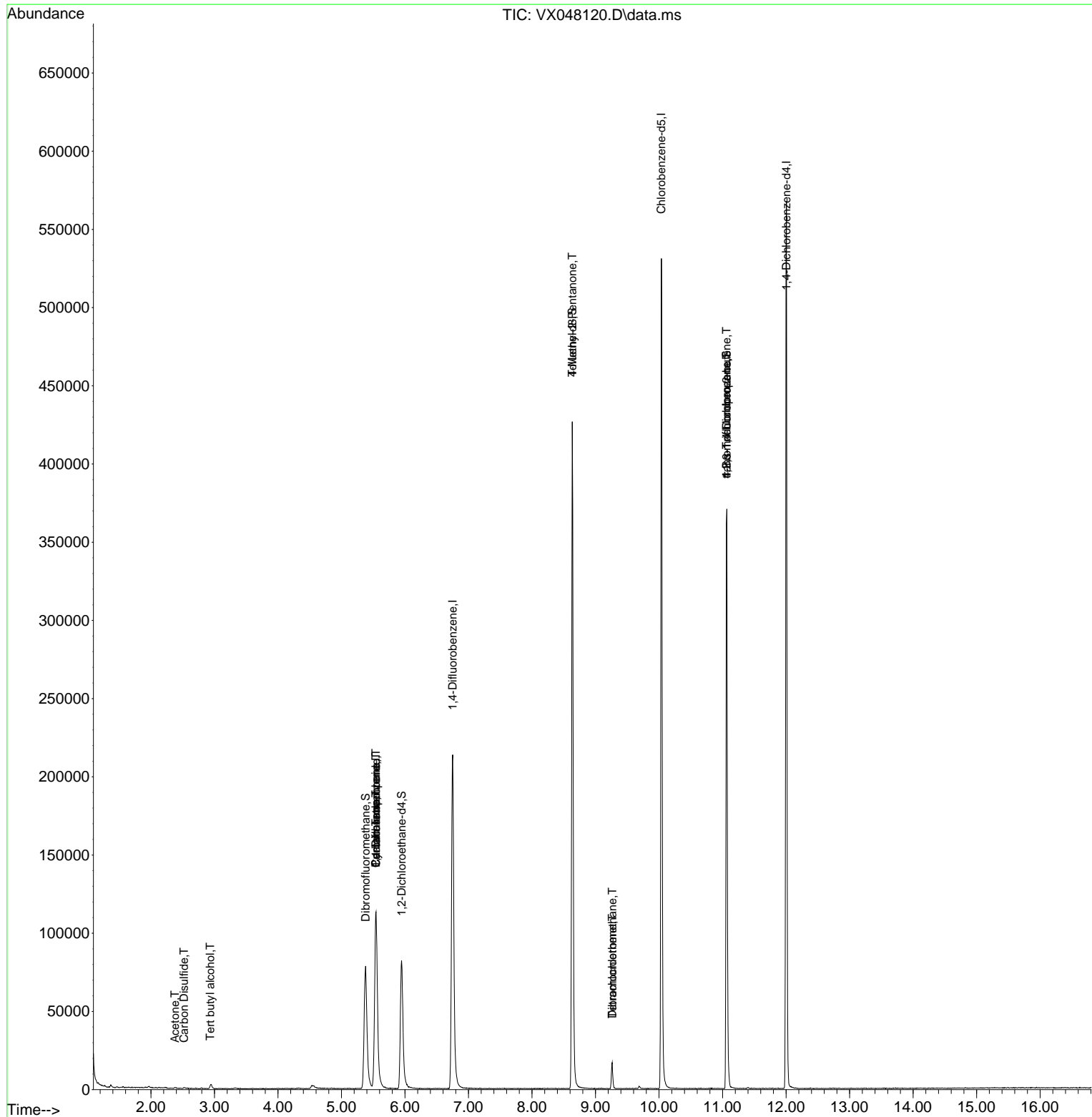
Internal Standards						
1) Pentafluorobenzene	5.544	168	113288	50.000	ug/l	0.00
34) 1,4-Difluorobenzene	6.751	114	232134	50.000	ug/l	0.00
63) Chlorobenzene-d5	10.037	117	241401	50.000	ug/l	0.00
72) 1,4-Dichlorobenzene-d4	12.006	152	119289	50.000	ug/l	0.00
System Monitoring Compounds						
33) 1,2-Dichloroethane-d4	5.946	65	90053	49.939	ug/l	0.00
Spiked Amount	50.000	Range	78 - 117	Recovery	=	99.880%
35) Dibromofluoromethane	5.379	113	74875	48.095	ug/l	0.00
Spiked Amount	50.000	Range	75 - 124	Recovery	=	96.180%
50) Toluene-d8	8.635	98	259052	48.089	ug/l	0.00
Spiked Amount	50.000	Range	92 - 112	Recovery	=	96.180%
62) 4-Bromofluorobenzene	11.061	95	109063	53.347	ug/l	0.00
Spiked Amount	50.000	Range	83 - 123	Recovery	=	106.700%
Target Compounds						
					Qvalue	
11) Tert butyl alcohol	2.934	59	1564	7.787	ug/l #	75
16) Acetone	2.380	43	884	1.127	ug/l #	87
17) Carbon Disulfide	2.520	76	1071	0.291	ug/l #	76
31) Cyclohexane	5.544	56	2682	1.126	ug/l #	22
36) 1,1-Dichloropropene	5.544	75	9900	4.352	ug/l #	51
38) Carbon Tetrachloride	5.544	117	12356	4.999	ug/l #	18
51) 4-Methyl-2-Pentanone	8.635	43	1126	0.508	ug/l #	1
60) Dibromochloromethane	9.263	129	3129	1.654	ug/l #	11
64) Tetrachloroethene	9.263	164	3117	1.981	ug/l	93
76) 1,2,3-Trichloropropane	11.061	75	58948	24.407	ug/l #	39
81) trans-1,4-Dichloro-2-b...	11.061	75	58948	62.241	ug/l #	8

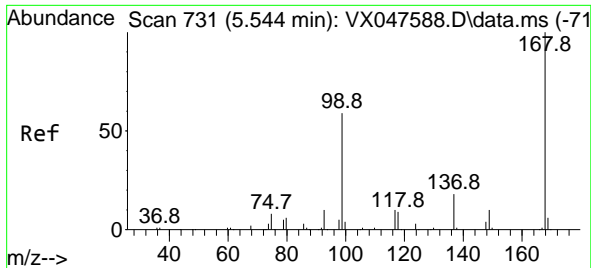
(#) = qualifier out of range (m) = manual integration (+) = signals summed

Data Path : Z:\voasrv\HPCHEM1\MSVOA_X\Data\VX101025\
 Data File : VX048120.D
 Acq On : 10 Oct 2025 17:57
 Operator : JC/MD
 Sample : Q3311-12 200X
 Misc : 5.0mL/MSVOA_X/WATER
 ALS Vial : 22 Sample Multiplier: 1

Instrument :
 MSVOA_X
 ClientSampleId :
 MW-214D

Quant Time: Oct 10 23:53:18 2025
 Quant Method : Z:\voasrv\HPCHEM1\MSVOA_X\Method\82X091625W.M
 Quant Title : SW846 8260
 QLast Update : Wed Sep 17 06:39:58 2025
 Response via : Initial Calibration

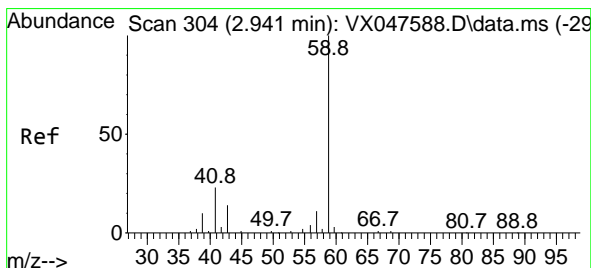
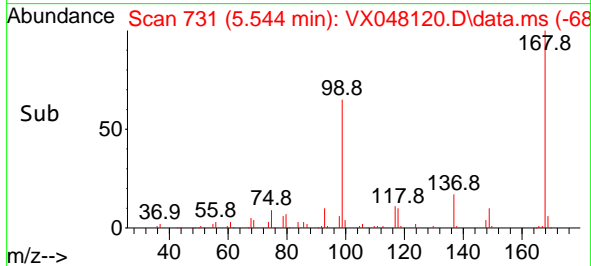
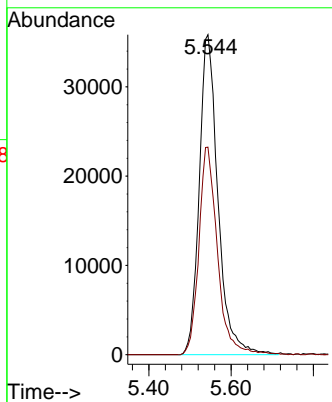
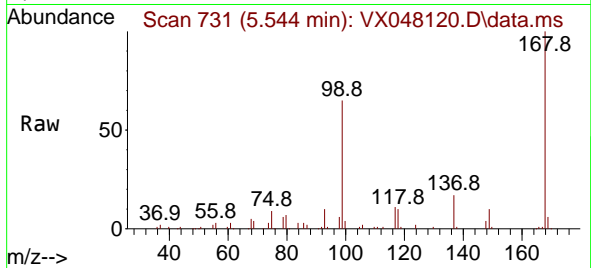




#1
 Pentafluorobenzene
 Concen: 50.000 ug/l
 RT: 5.544 min Scan# 71
 Delta R.T. -0.000 min
 Lab File: VX048120.D
 Acq: 10 Oct 2025 17:57

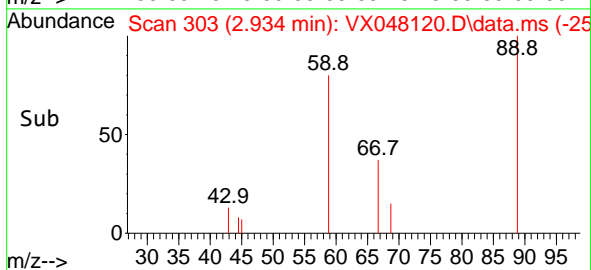
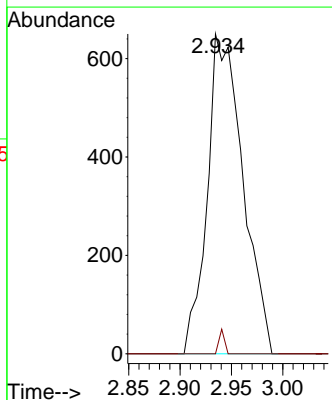
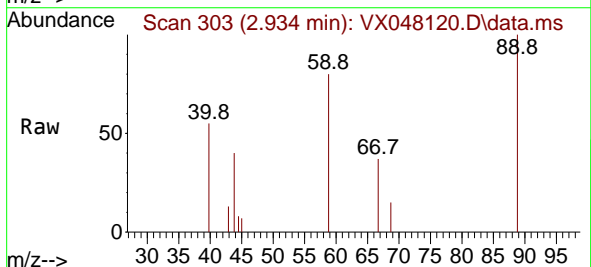
Instrument :
 MSVOA_X
 ClientSampleId :
 MW-214D

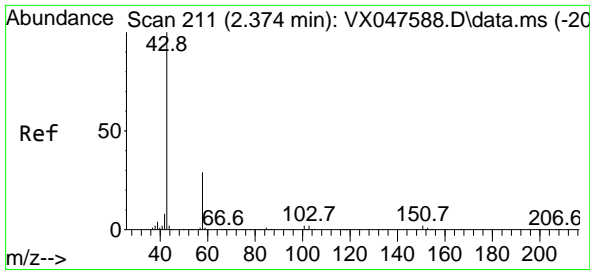
Tgt Ion:168 Resp: 113288
 Ion Ratio Lower Upper
 168 100
 99 64.8 48.8 73.2



#11
 Tert butyl alcohol
 Concen: 7.787 ug/l
 RT: 2.934 min Scan# 303
 Delta R.T. -0.006 min
 Lab File: VX048120.D
 Acq: 10 Oct 2025 17:57

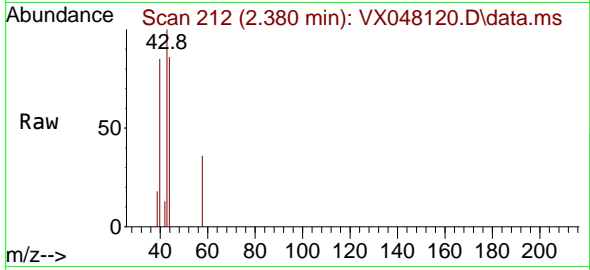
Tgt Ion: 59 Resp: 1564
 Ion Ratio Lower Upper
 59 100
 57 1.2 8.3 12.5#



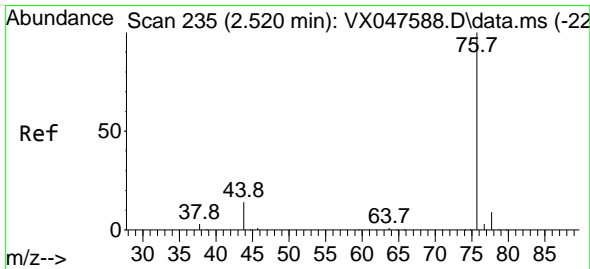
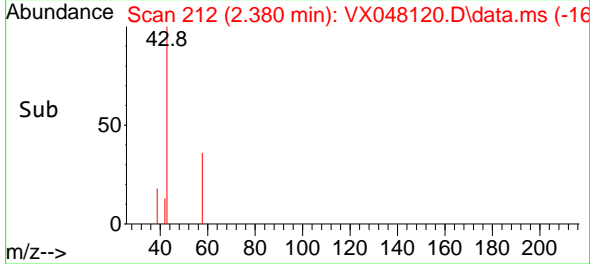
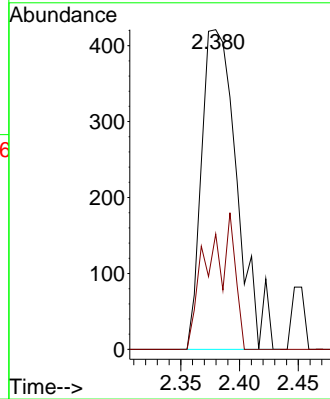


#16
 Acetone
 Concen: 1.127 ug/l
 RT: 2.380 min Scan# 211
 Delta R.T. 0.006 min
 Lab File: VX048120.D
 Acq: 10 Oct 2025 17:57

Instrument :
 MSVOA_X
 ClientSampleId :
 MW-214D

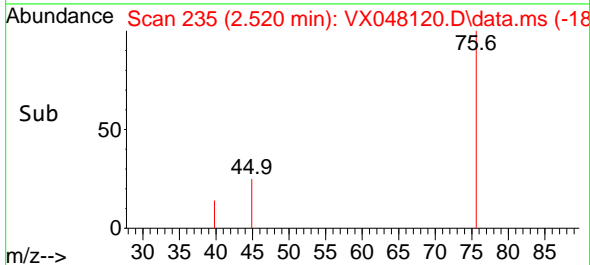
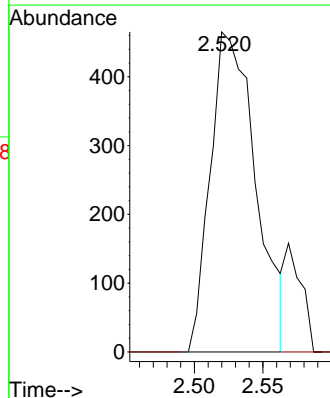
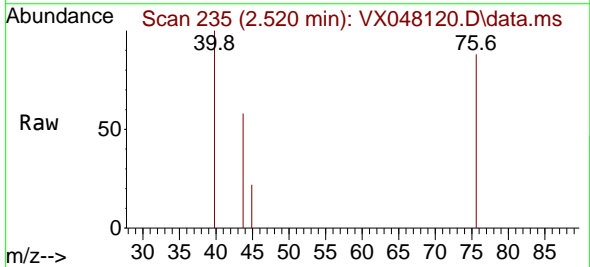


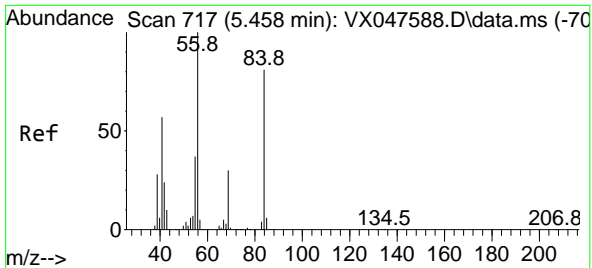
Tgt Ion: 43 Resp: 884
 Ion Ratio Lower Upper
 43 100
 58 36.1 23.4 35.0#



#17
 Carbon Disulfide
 Concen: 0.291 ug/l
 RT: 2.520 min Scan# 235
 Delta R.T. -0.000 min
 Lab File: VX048120.D
 Acq: 10 Oct 2025 17:57

Tgt Ion: 76 Resp: 1071
 Ion Ratio Lower Upper
 76 100
 78 0.0 6.8 10.2#

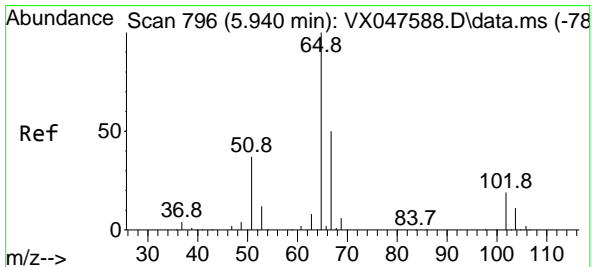
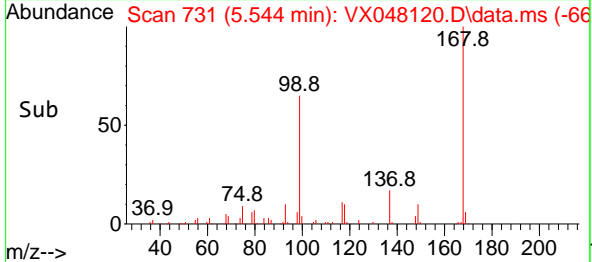
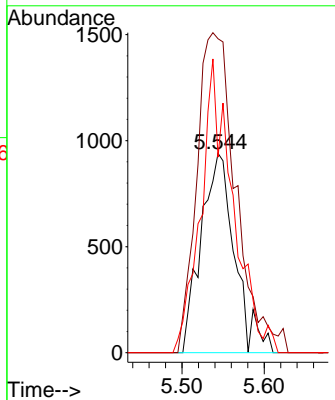
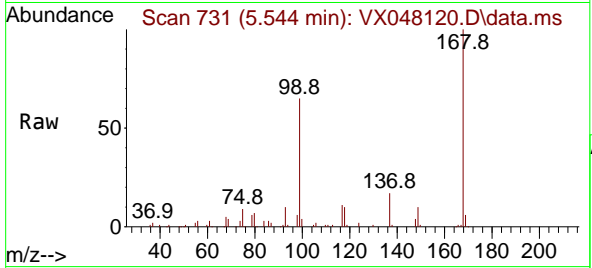




#31
 Cyclohexane
 Concen: 1.126 ug/l
 RT: 5.544 min Scan# 717
 Delta R.T. 0.085 min
 Lab File: VX048120.D
 Acq: 10 Oct 2025 17:57

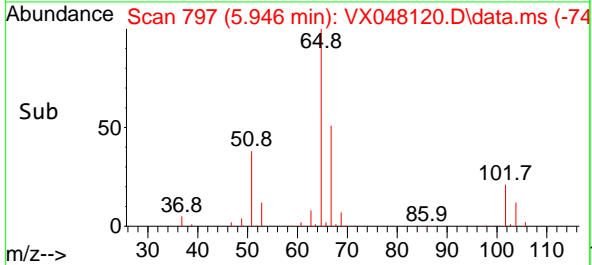
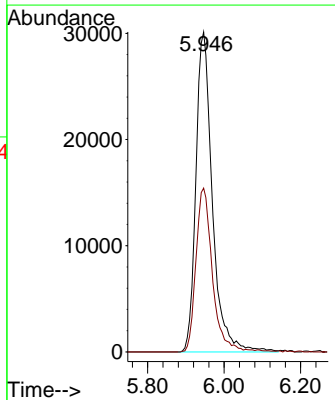
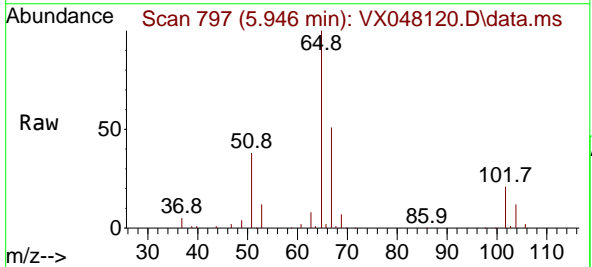
Instrument : MSVOA_X
 ClientSampleId : MW-214D

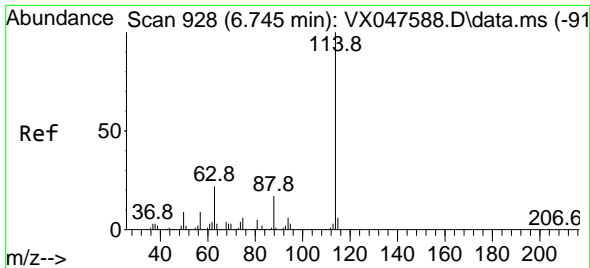
Tgt Ion	Resp	Lower	Upper
56	2682		
56	100		
69	157.4	23.8	35.8#
84	98.1	64.6	97.0#



#33
 1,2-Dichloroethane-d4
 Concen: 49.939 ug/l
 RT: 5.946 min Scan# 797
 Delta R.T. 0.006 min
 Lab File: VX048120.D
 Acq: 10 Oct 2025 17:57

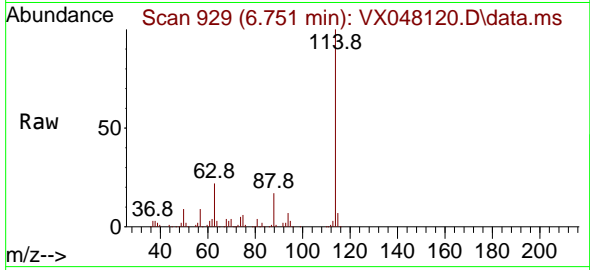
Tgt Ion	Resp	Lower	Upper
65	90053		
65	100		
67	51.1	0.0	103.0



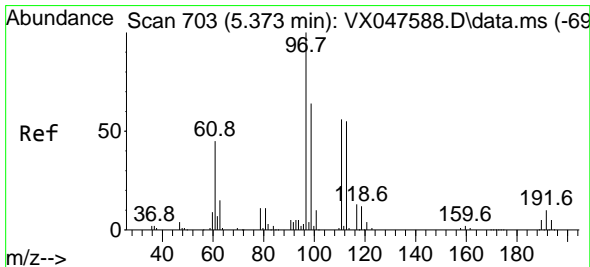
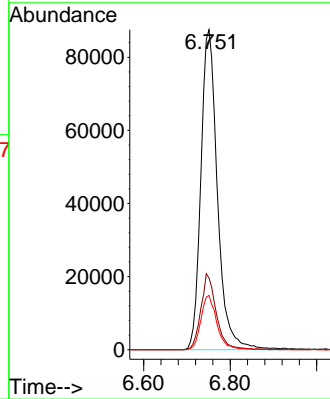
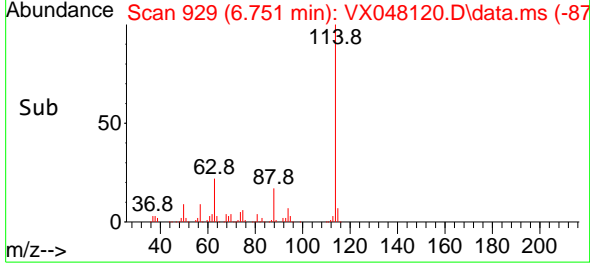


#34
 1,4-Difluorobenzene
 Concen: 50.000 ug/l
 RT: 6.751 min Scan# 91
 Delta R.T. 0.006 min
 Lab File: VX048120.D
 Acq: 10 Oct 2025 17:57

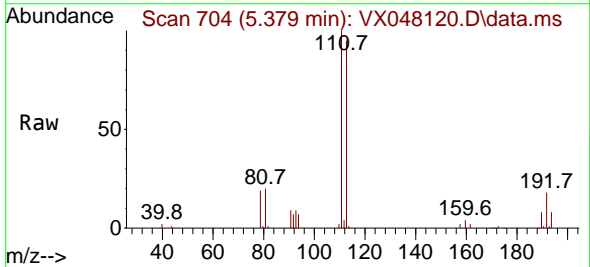
Instrument :
 MSVOA_X
 ClientSampleId :
 MW-214D



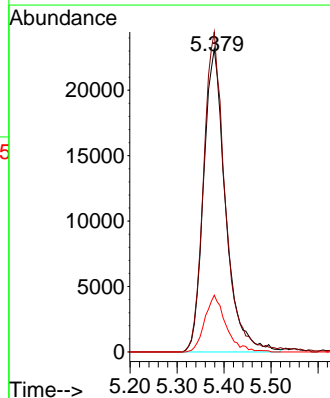
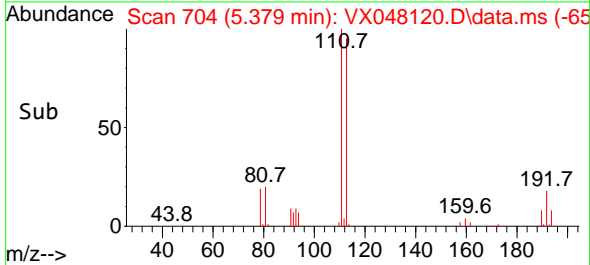
Tgt Ion:114 Resp: 232134
 Ion Ratio Lower Upper
 114 100
 63 22.4 0.0 44.0
 88 17.0 0.0 34.2

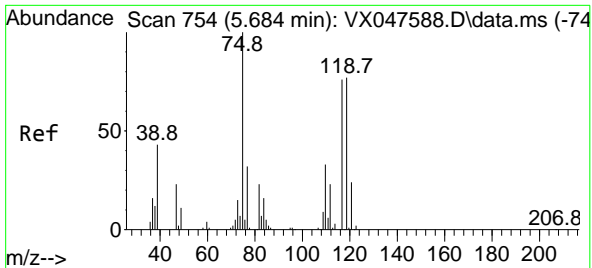


#35
 Dibromofluoromethane
 Concen: 48.095 ug/l
 RT: 5.379 min Scan# 704
 Delta R.T. 0.006 min
 Lab File: VX048120.D
 Acq: 10 Oct 2025 17:57



Tgt Ion:113 Resp: 74875
 Ion Ratio Lower Upper
 113 100
 111 103.5 80.9 121.3
 192 18.1 14.2 21.4

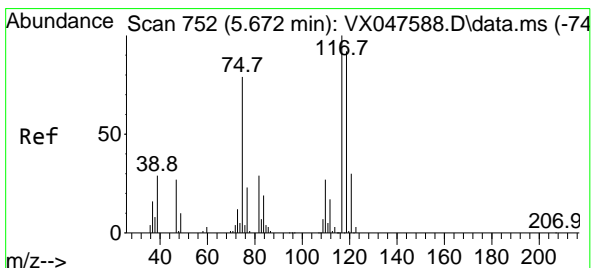
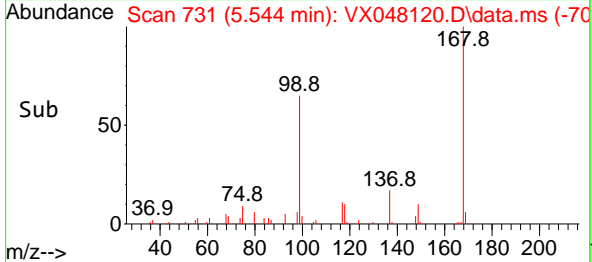
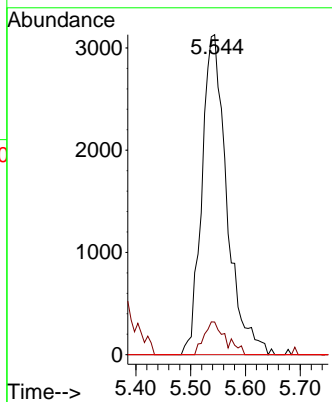
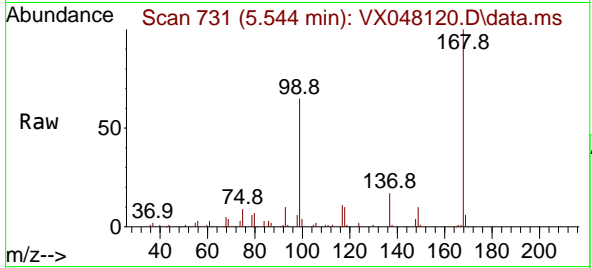




#36
 1,1-Dichloropropene
 Concen: 4.352 ug/l
 RT: 5.544 min Scan# 711
 Delta R.T. -0.140 min
 Lab File: VX048120.D
 Acq: 10 Oct 2025 17:57

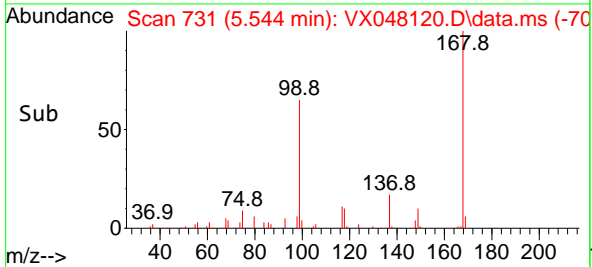
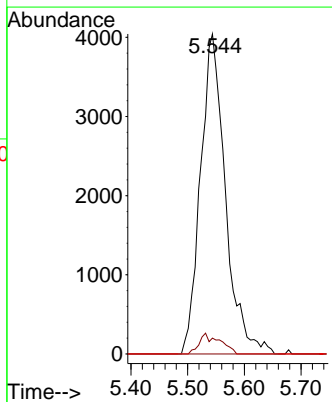
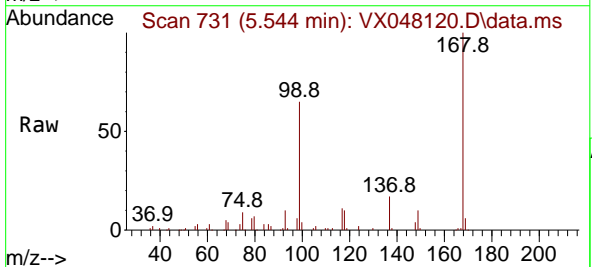
Instrument : MSVOA_X
 ClientSampleId : MW-214D

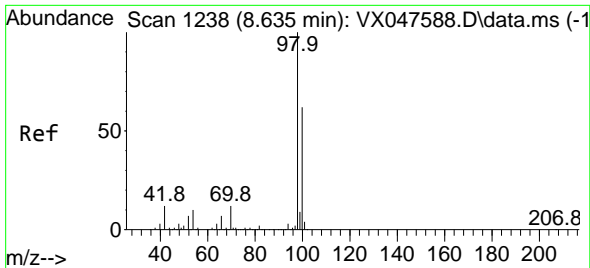
Tgt Ion	Resp	Lower	Upper
75	9900		
75	100		
110	8.9	16.7	50.1#
77	0.0	24.3	36.5#



#38
 Carbon Tetrachloride
 Concen: 4.999 ug/l
 RT: 5.544 min Scan# 731
 Delta R.T. -0.128 min
 Lab File: VX048120.D
 Acq: 10 Oct 2025 17:57

Tgt Ion	Resp	Lower	Upper
117	12356		
117	100		
119	4.9	73.4	110.2#
121	0.0	23.8	35.6#

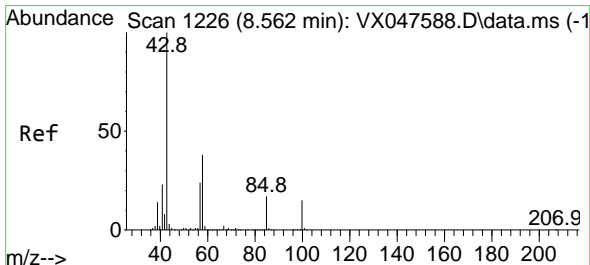
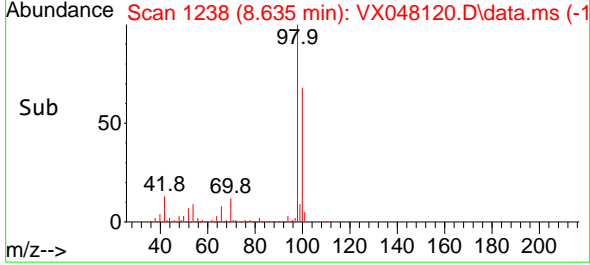
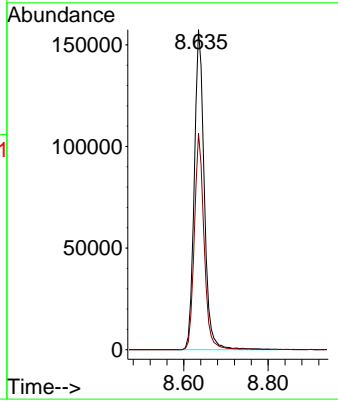
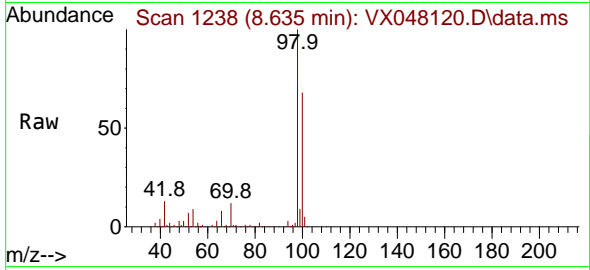




#50
 Toluene-d8
 Concen: 48.089 ug/l
 RT: 8.635 min Scan# 1238
 Delta R.T. -0.000 min
 Lab File: VX048120.D
 Acq: 10 Oct 2025 17:57

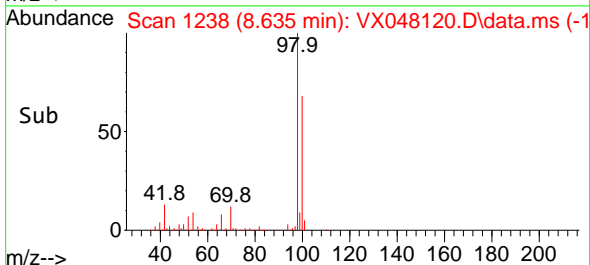
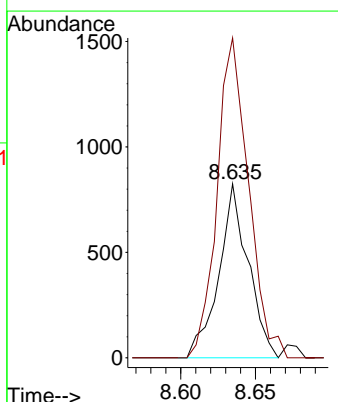
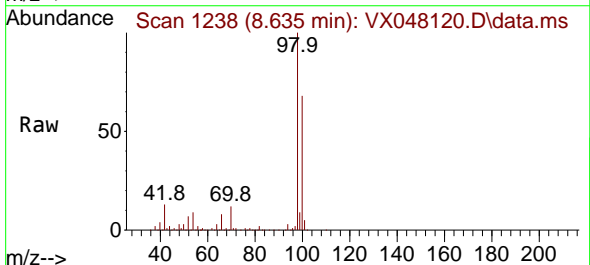
Instrument : MSVOA_X
 ClientSampleId : MW-214D

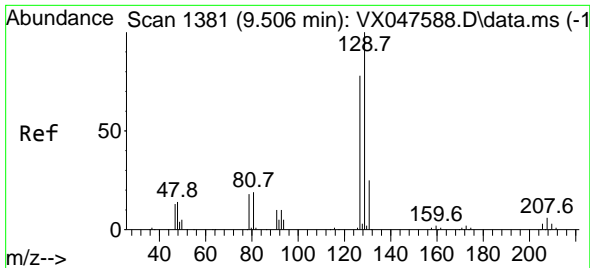
Tgt Ion: 98 Resp: 259052
 Ion Ratio Lower Upper
 98 100
 100 66.0 53.0 79.4



#51
 4-Methyl-2-Pentanone
 Concen: 0.508 ug/l
 RT: 8.635 min Scan# 1238
 Delta R.T. 0.073 min
 Lab File: VX048120.D
 Acq: 10 Oct 2025 17:57

Tgt Ion: 43 Resp: 1126
 Ion Ratio Lower Upper
 43 100
 58 196.9 30.3 45.5#

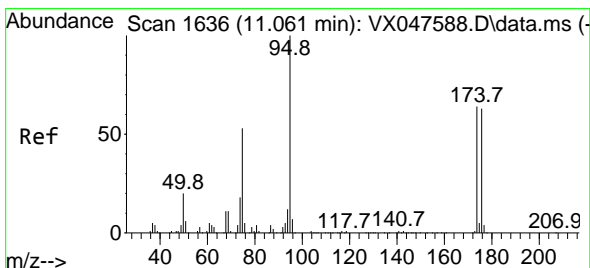
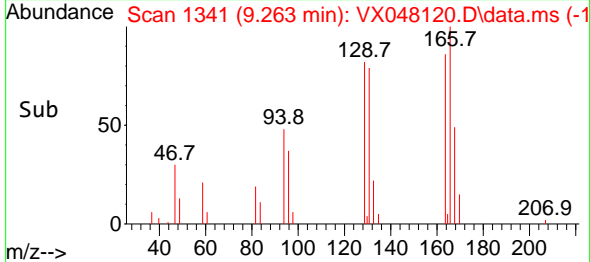
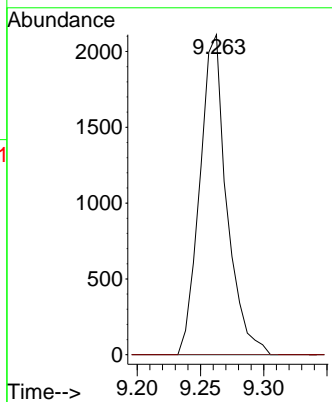
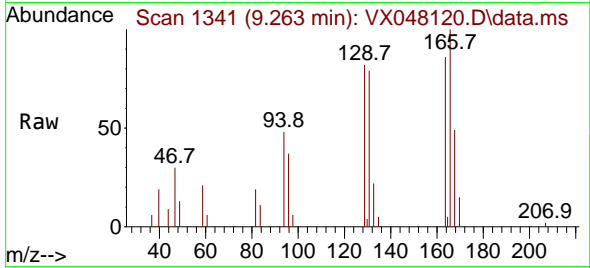




#60
 Dibromochloromethane
 Concen: 1.654 ug/l
 RT: 9.263 min Scan# 11
 Delta R.T. -0.244 min
 Lab File: VX048120.D
 Acq: 10 Oct 2025 17:57

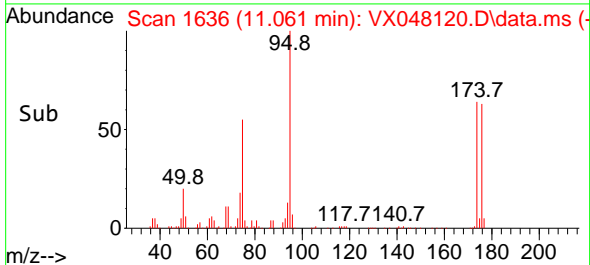
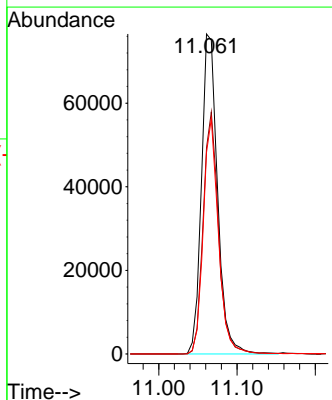
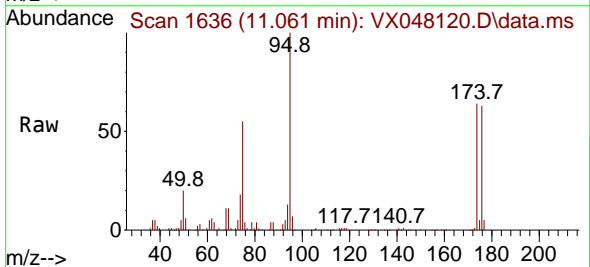
Instrument :
 MSVOA_X
 ClientSampleId :
 MW-214D

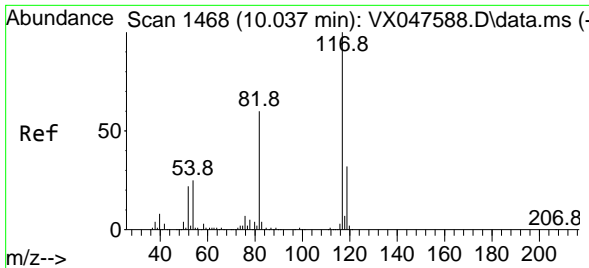
Tgt Ion:129 Resp: 3129
 Ion Ratio Lower Upper
 129 100
 127 0.0 38.4 115.2#



#62
 4-Bromofluorobenzene
 Concen: 53.347 ug/l
 RT: 11.061 min Scan# 1636
 Delta R.T. -0.000 min
 Lab File: VX048120.D
 Acq: 10 Oct 2025 17:57

Tgt Ion: 95 Resp: 109063
 Ion Ratio Lower Upper
 95 100
 174 72.4 0.0 141.6
 176 69.3 0.0 138.4



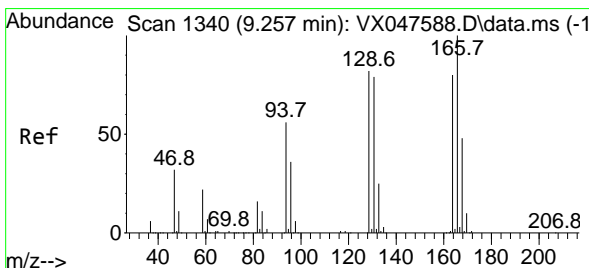
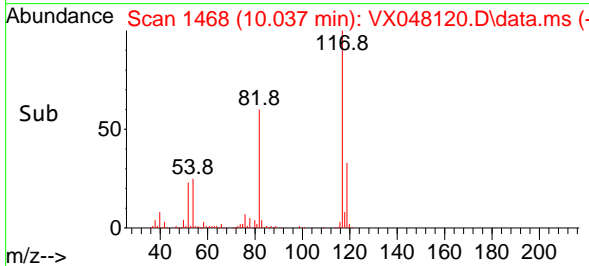
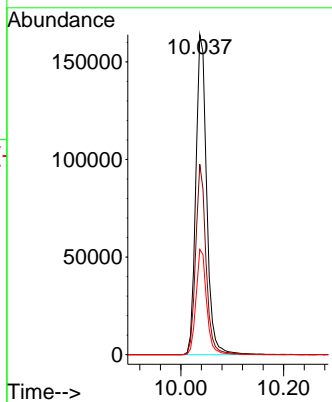
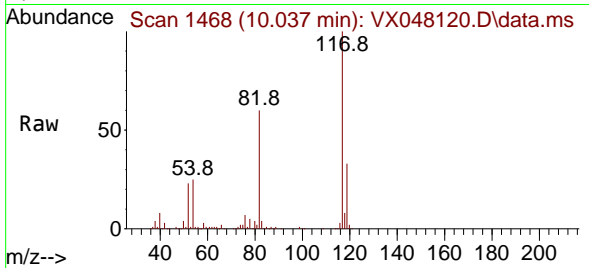


#63
 Chlorobenzene-d5
 Concen: 50.000 ug/l
 RT: 10.037 min Scan# 1468
 Delta R.T. -0.000 min
 Lab File: VX048120.D
 Acq: 10 Oct 2025 17:57

Instrument : MSVOA_X
 ClientSampleId : MW-214D

Tgt Ion:117 Resp: 241401

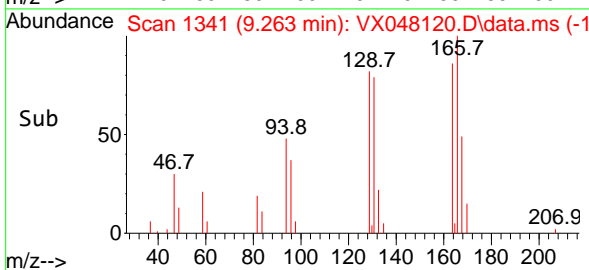
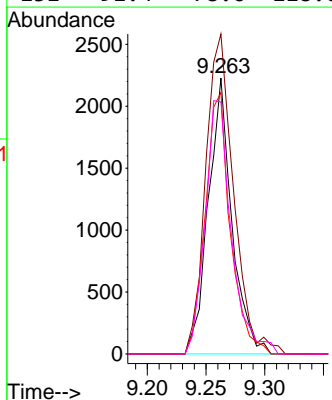
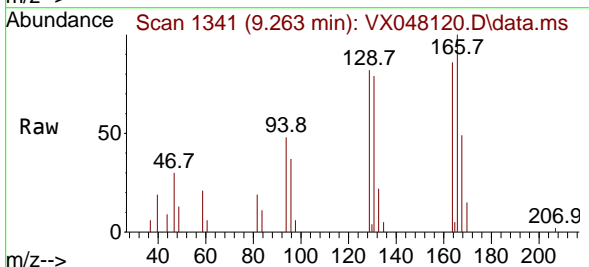
Ion	Ratio	Lower	Upper
117	100		
82	59.5	47.8	71.6
119	32.9	25.2	37.8

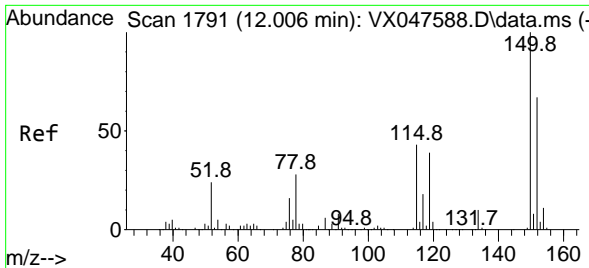


#64
 Tetrachloroethene
 Concen: 1.981 ug/l
 RT: 9.263 min Scan# 1341
 Delta R.T. 0.006 min
 Lab File: VX048120.D
 Acq: 10 Oct 2025 17:57

Tgt Ion:164 Resp: 3117

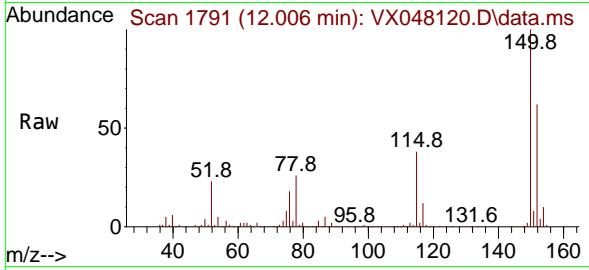
Ion	Ratio	Lower	Upper
164	100		
166	116.0	100.2	150.2
129	94.8	81.8	122.6
131	91.4	78.6	118.0



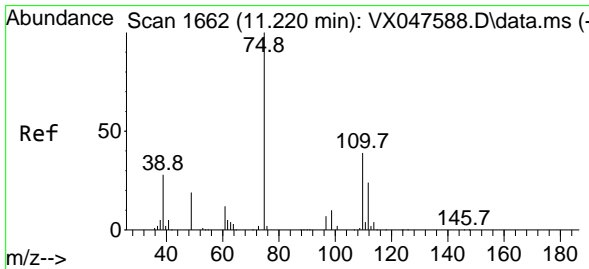
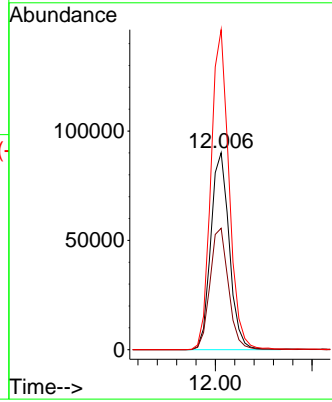
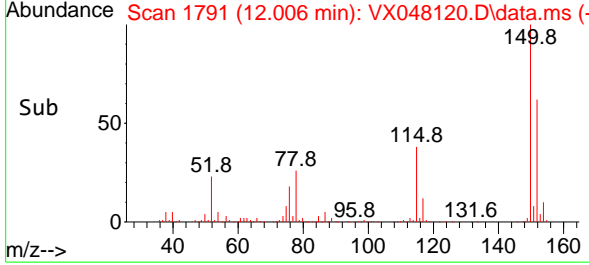


#72
 1,4-Dichlorobenzene-d4
 Concen: 50.000 ug/l
 RT: 12.006 min Scan# 11
 Delta R.T. -0.000 min
 Lab File: VX048120.D
 Acq: 10 Oct 2025 17:57

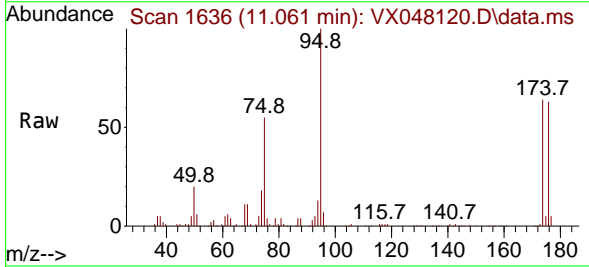
Instrument : MSVOA_X
 ClientSampleId : MW-214D



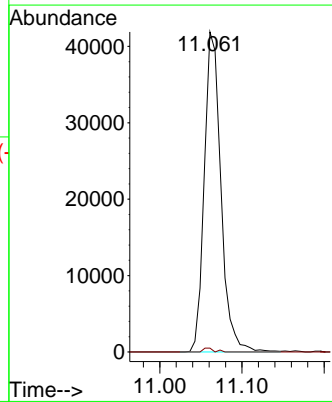
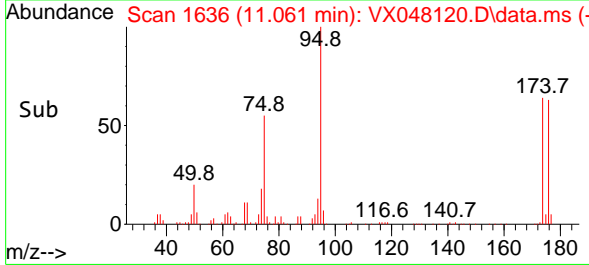
Tgt Ion:152 Resp: 119289
 Ion Ratio Lower Upper
 152 100
 115 61.8 44.9 134.5
 150 159.4 0.0 352.0

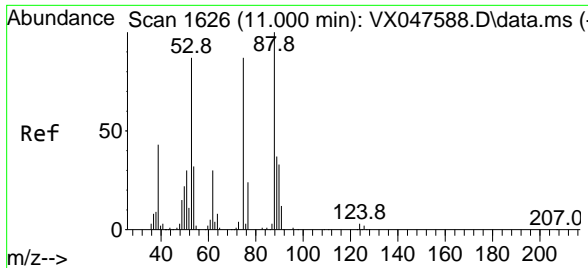


#76
 1,2,3-Trichloropropane
 Concen: 24.407 ug/l
 RT: 11.061 min Scan# 1636
 Delta R.T. -0.159 min
 Lab File: VX048120.D
 Acq: 10 Oct 2025 17:57



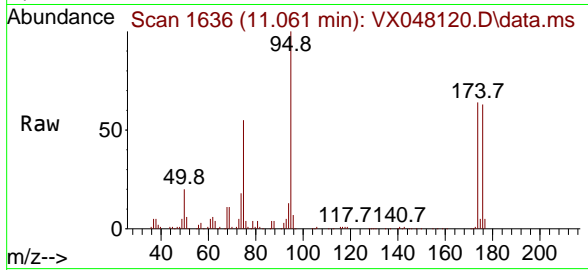
Tgt Ion: 75 Resp: 58948
 Ion Ratio Lower Upper
 75 100
 77 0.8 18.8 56.4#





#81
 trans-1,4-Dichloro-2-butene
 Concen: 62.241 ug/l
 RT: 11.061 min Scan# 10
 Delta R.T. 0.061 min
 Lab File: VX048120.D
 Acq: 10 Oct 2025 17:57

Instrument :
 MSVOA_X
 ClientSampleId :
 MW-214D



Tgt Ion: 75 Resp: 58948
 Ion Ratio Lower Upper
 75 100
 53 0.0 83.4 125.2#
 89 0.0 36.3 54.5#

