

Data Path : Z:\voasrv\HPCHEM1\MSVOA\_X\Data\VX101121\  
 Data File : VX024712.D  
 Acq On : 11 Oct 2021 14:20  
 Operator : JC/MD  
 Sample : VX1011WBL01  
 Misc : 5.0mL/MSVOA\_X/WATER  
 ALS Vial : 4 Sample Multiplier: 1

Instrument :  
 MSVOA\_X  
 ClientSampleId :  
 VX1011WBL01

Integration Parameters: RTEINT.P

Integrator: RTE  
 Smoothing : ON Filtering: 5  
 Sampling : 1 Min Area: 3 % of largest Peak  
 Start Thrs: 0.2 Max Peaks: 100  
 Stop Thrs : 0 Peak Location: TOP

If leading or trailing edge < 100 prefer < Baseline drop else tangent >  
 Peak separation: 5

Method : Z:\voasrv\HPCHEM1\MSVOA\_X\Method\82X092321W.M  
 Title : SW846 8260

Signal : TIC: VX024712.D\data.ms

peak #	R.T. min	first scan	max scan	last scan	PK TY	peak height	corr. area	corr. % max.	% of total
1	5.397	694	707	721	rBV	99493	287510	34.40%	6.395%
2	5.562	721	734	752	rVB	153683	437605	52.36%	9.734%
3	5.964	789	800	811	rBV	109664	284425	34.03%	6.326%
4	6.769	921	932	950	rBV	255634	603647	72.23%	13.427%
5	8.653	1234	1241	1252	rBV	538635	835714	100.00%	18.589%
6	10.055	1465	1471	1486	rBV	562006	760495	91.00%	16.916%
7	11.085	1634	1640	1650	rBV	489567	616337	73.75%	13.709%
8	12.024	1789	1794	1802	rBV	544651	670107	80.18%	14.905%

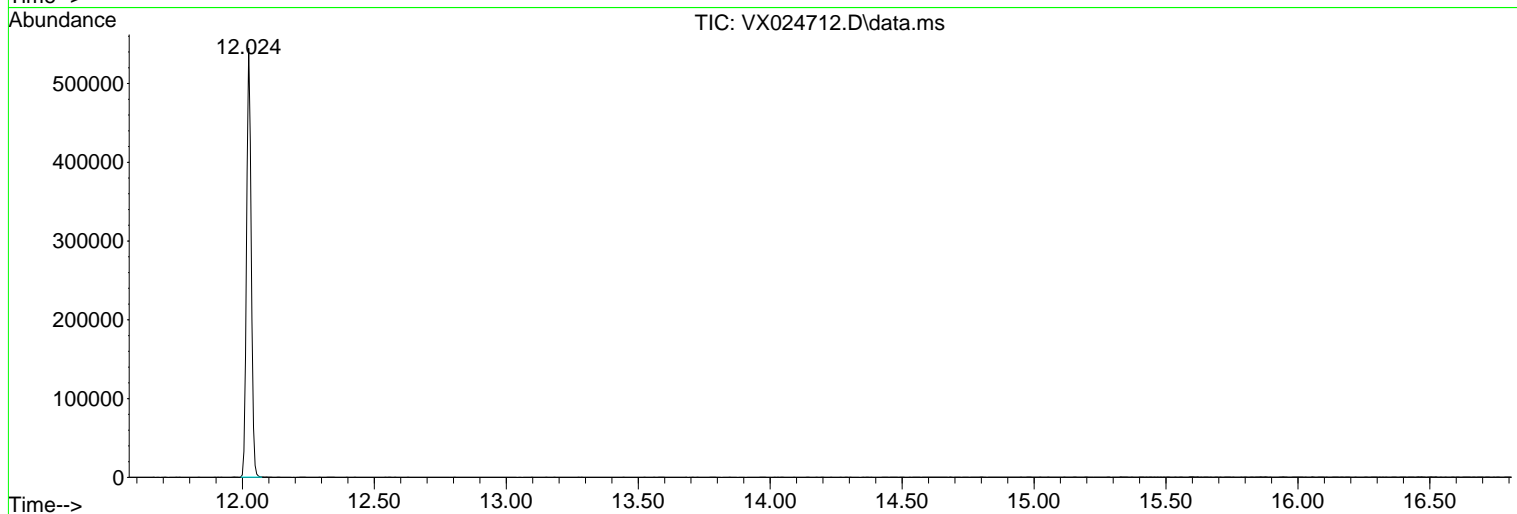
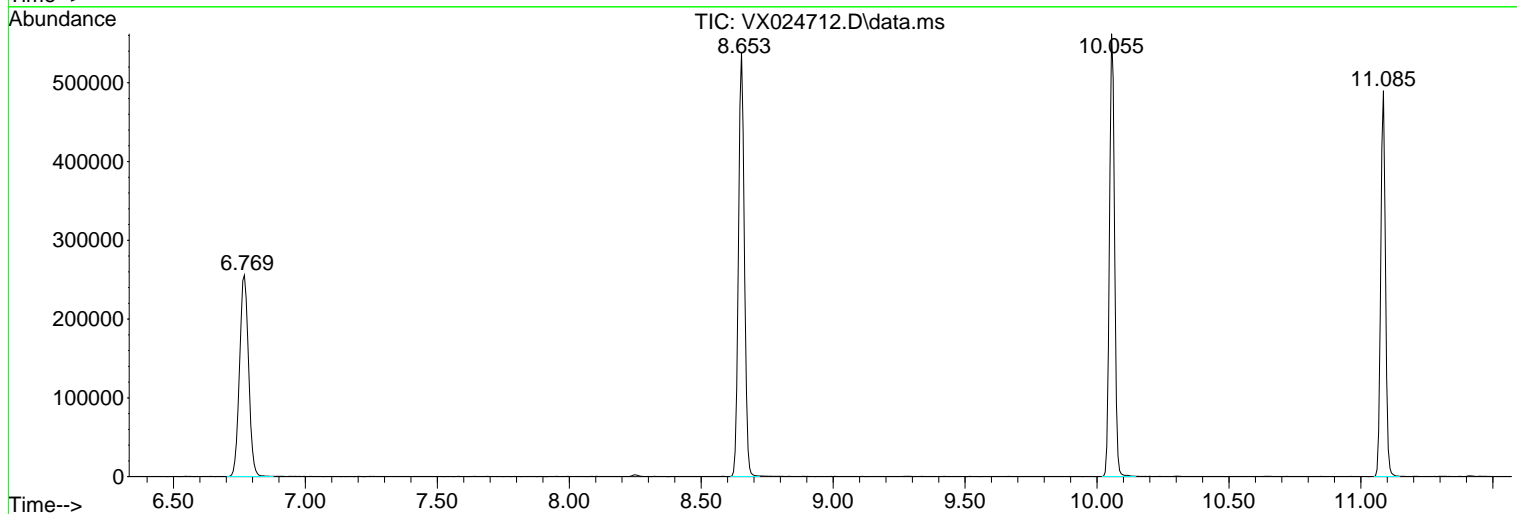
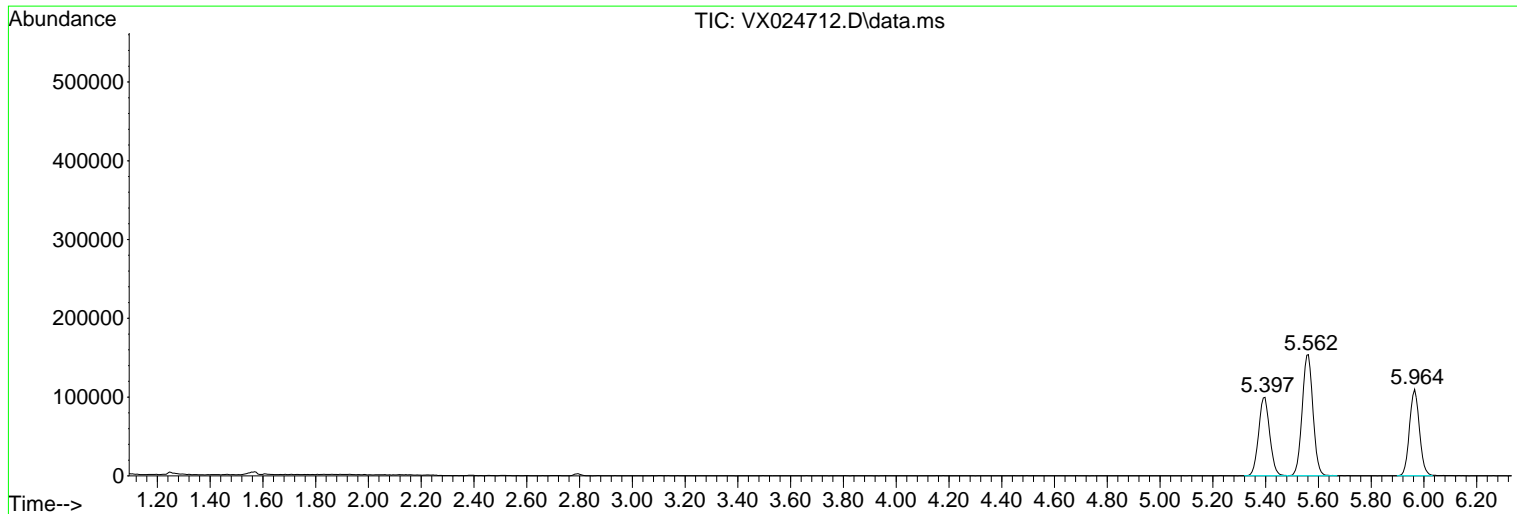
Sum of corrected areas: 4495840

Data Path : Z:\voasrv\HPCHEM1\MSVOA\_X\Data\VX101121\  
 Data File : VX024712.D  
 Acq On : 11 Oct 2021 14:20  
 Operator : JC/MD  
 Sample : VX1011WBL01  
 Misc : 5.0mL/MSVOA\_X/WATER  
 ALS Vial : 4 Sample Multiplier: 1

**Instrument :**  
 MSVOA\_X  
**ClientSampled :**  
 VX1011WBL01

Quant Method : Z:\voasrv\HPCHEM1\MSVOA\_X\Method\82X092321W.M  
 Quant Title : SW846 8260

TIC Library : C:\Database\NIST20.L  
 TIC Integration Parameters: LSCINT.P



Library Search Compound Report

Data Path : Z:\voasrv\HPCHEM1\MSVOA\_X\Data\VX101121\  
Data File : VX024712.D  
Acq On : 11 Oct 2021 14:20  
Operator : JC/MD  
Sample : VX1011WBL01  
Misc : 5.0mL/MSVOA\_X/WATER  
ALS Vial : 4 Sample Multiplier: 1

Instrument :  
MSVOA\_X  
ClientSampleId :  
VX1011WBL01

Quant Method : Z:\voasrv\HPCHEM1\MSVOA\_X\Method\82X092321W.M  
Quant Title : SW846 8260

TIC Library : C:\Database\NIST20.L  
TIC Integration Parameters: LSCINT.P

No Library Search Compounds Detected

\*\*\*\*\*

Data Path : Z:\voasrv\HPCHEM1\MSVOA\_X\Data\VX101121\  
Data File : VX024712.D  
Acq On : 11 Oct 2021 14:20  
Operator : JC/MD  
Sample : VX1011WBL01  
Misc : 5.0mL/MSVOA\_X/WATER  
ALS Vial : 4 Sample Multiplier: 1

Instrument :  
MSVOA\_X  
ClientSampleId :  
VX1011WBL01

Quant Method : Z:\voasrv\HPCHEM1\MSVOA\_X\Method\82X092321W.M  
Quant Title : SW846 8260

TIC Library : C:\Database\NIST20.L  
TIC Integration Parameters: LSCINT.P

TIC Top Hit name	RT	EstConc	Units	Response	--Internal Standard--			
					#	RT	Resp	Conc

---