

Data Path : Z:\voasrv\HPCHEM1\MSVOA\_X\Data\VX101122\  
 Data File : VX032048.D  
 Acq On : 11 Oct 2022 19:38  
 Operator : JC/MD  
 Sample : N5014-03ME  
 Misc : 5.07g/10mL/100uL/5.00mL/MSVOA\_X/MEOH  
 ALS Vial : 23 Sample Multiplier: 1

Instrument :  
 MSVOA\_X  
 ClientSampleId :  
 SB-05-2.0-3.0

Quant Time: Oct 12 05:18:38 2022  
 Quant Method : Z:\voasrv\HPCHEM1\MSVOA\_X\Method\82X100622W.M  
 Quant Title : SW846 8260  
 QLast Update : Thu Oct 06 14:28:46 2022  
 Response via : Initial Calibration

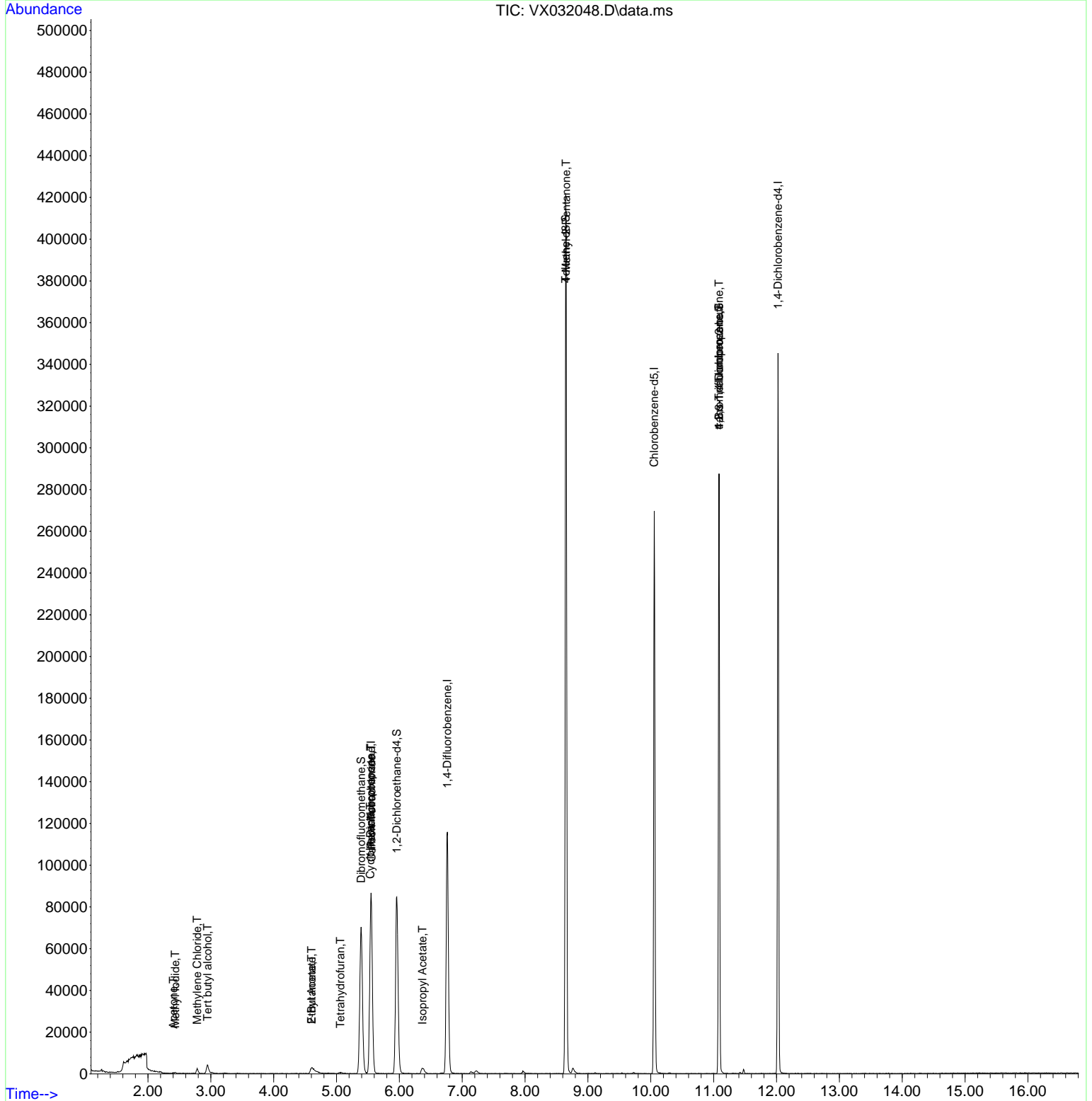
Compound	R.T.	QIon	Response	Conc	Units	Dev(Min)
-----						
Internal Standards						
1) Pentafluorobenzene	5.550	168	80443	50.000	ug/l	0.00
34) 1,4-Difluorobenzene	6.763	114	121397	50.000	ug/l	0.00
63) Chlorobenzene-d5	10.055	117	120104	50.000	ug/l	0.00
72) 1,4-Dichlorobenzene-d4	12.024	152	67842	50.000	ug/l	0.00
System Monitoring Compounds						
33) 1,2-Dichloroethane-d4	5.958	65	83704	50.384	ug/l	0.00
Spiked Amount	50.000	Range 74 - 125	Recovery	=	100.760%	
35) Dibromofluoromethane	5.391	113	61140	44.493	ug/l	0.00
Spiked Amount	50.000	Range 75 - 124	Recovery	=	88.980%	
50) Toluene-d8	8.647	98	245497	49.649	ug/l	0.00
Spiked Amount	50.000	Range 86 - 113	Recovery	=	99.300%	
62) 4-Bromofluorobenzene	11.085	95	73857	42.251	ug/l	0.00
Spiked Amount	50.000	Range 83 - 123	Recovery	=	84.500%	
Target Compounds						
						Qvalue
5) Bromomethane	1.611	94	827	Below Cal		97
10) Methyl Iodide	2.434	142	280	2.950	ug/l #	73
11) Tert butyl alcohol	2.946	59	3046	14.737	ug/l #	73
13) Acrolein	1.971	56	83	Below Cal	#	47
16) Acetone	2.404	43	512	0.907	ug/l	98
20) Methylene Chloride	2.782	84	1115	0.751	ug/l #	85
25) 2-Butanone	4.605	43	8002	9.066	ug/l	93
29) Tetrahydrofuran	5.062	42	520	0.913	ug/l #	56
31) Cyclohexane	5.537	56	1993	1.004	ug/l #	40
36) 1,1-Dichloropropene	5.544	75	6803	3.733	ug/l #	46
37) Ethyl Acetate	4.605	43	8002	4.664	ug/l #	68
38) Carbon Tetrachloride	5.556	117	8674	4.656	ug/l #	18
43) Isopropyl Acetate	6.367	43	1792	0.688	ug/l #	61
51) 4-Methyl-2-Pentanone	8.653	43	1094	0.634	ug/l #	1
76) 1,2,3-Trichloropropane	11.085	75	39769	28.602	ug/l #	36
81) trans-1,4-Dichloro-2-b...	11.085	75	39769	97.793	ug/l #	11

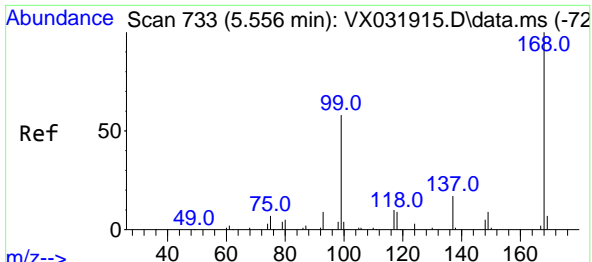
(#) = qualifier out of range (m) = manual integration (+) = signals summed

Data Path : Z:\voasrv\HPCHEM1\MSVOA\_X\Data\VX101122\  
 Data File : VX032048.D  
 Acq On : 11 Oct 2022 19:38  
 Operator : JC/MD  
 Sample : N5014-03ME  
 Misc : 5.07g/10mL/100uL/5.00mL/MSVOA\_X/MEOH  
 ALS Vial : 23 Sample Multiplier: 1

Instrument :  
 MSVOA\_X  
 ClientSampleId :  
 SB-05-2.0-3.0

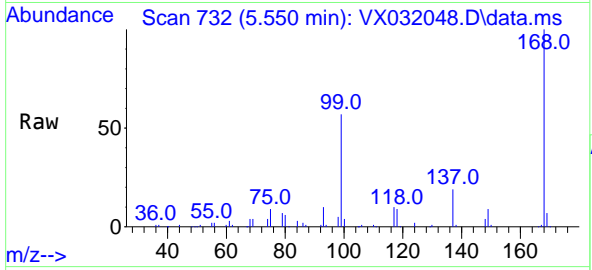
Quant Time: Oct 12 05:18:38 2022  
 Quant Method : Z:\voasrv\HPCHEM1\MSVOA\_X\Method\82X100622W.M  
 Quant Title : SW846 8260  
 QLast Update : Thu Oct 06 14:28:46 2022  
 Response via : Initial Calibration



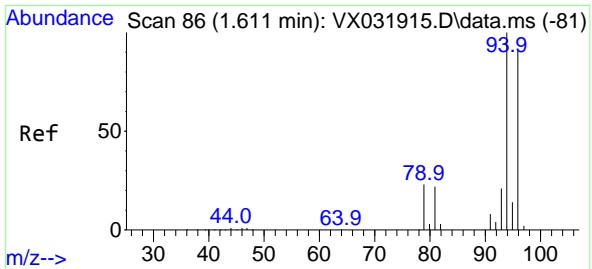
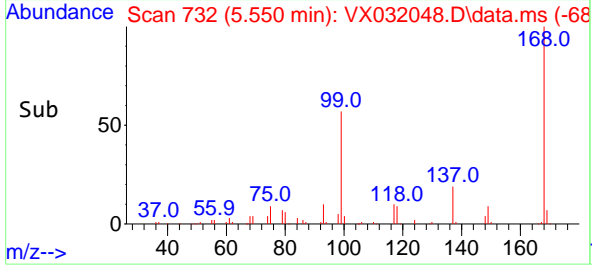
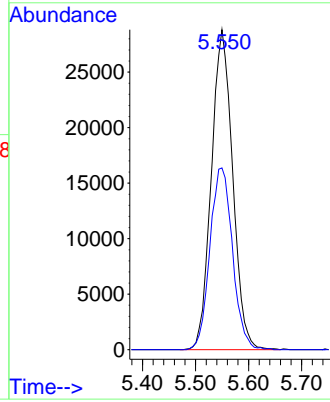


#1  
 Pentafluorobenzene  
 Concen: 50.000 ug/l  
 RT: 5.550 min Scan# 71  
 Delta R.T. -0.006 min  
 Lab File: VX032048.D  
 Acq: 11 Oct 2022 19:38

Instrument : MSVOA\_X  
 ClientSampleId : SB-05-2.0-3.0

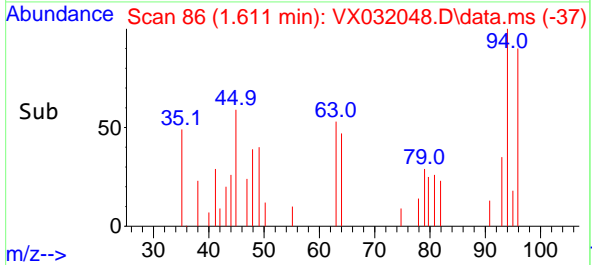
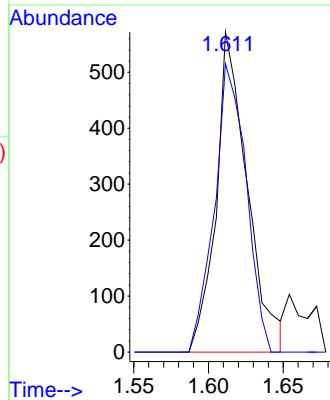
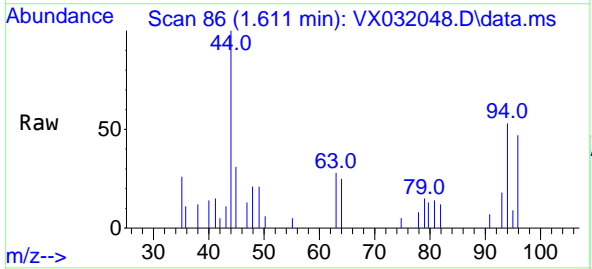


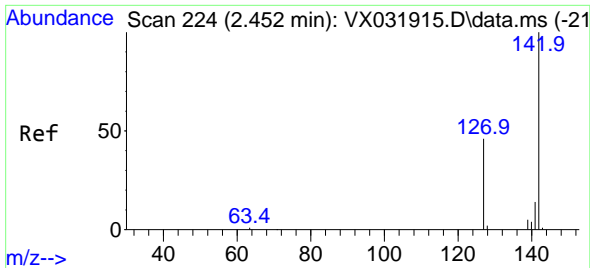
Tgt Ion:168 Resp: 80443  
 Ion Ratio Lower Upper  
 168 100  
 99 56.8 48.8 73.2



#5  
 Bromomethane  
 Concen: Below Cal  
 RT: 1.611 min Scan# 86  
 Delta R.T. 0.000 min  
 Lab File: VX032048.D  
 Acq: 11 Oct 2022 19:38

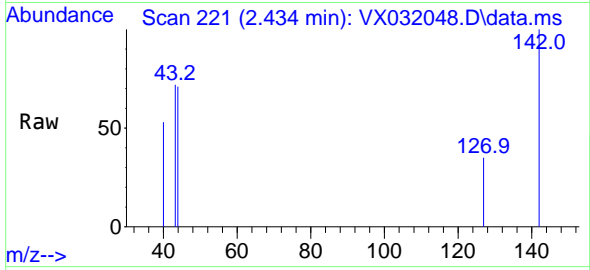
Tgt Ion: 94 Resp: 827  
 Ion Ratio Lower Upper  
 94 100  
 96 90.0 74.4 111.6



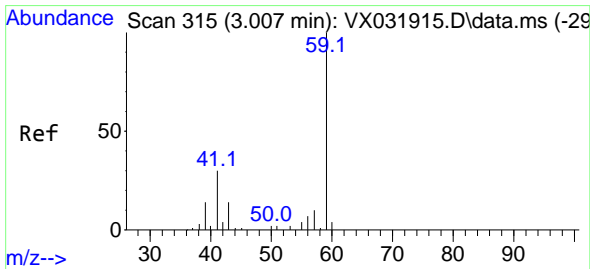
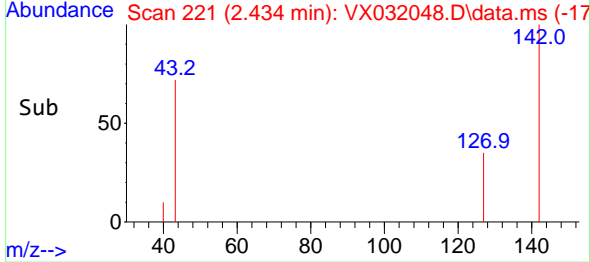
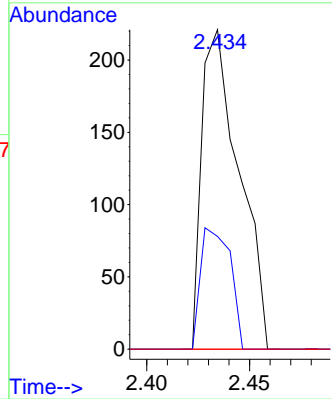


#10  
Methyl Iodide  
Concen: 2.950 ug/l  
RT: 2.434 min Scan# 21  
Delta R.T. -0.018 min  
Lab File: VX032048.D  
Acq: 11 Oct 2022 19:38

Instrument : MSVOA\_X  
ClientSampleId : SB-05-2.0-3.0

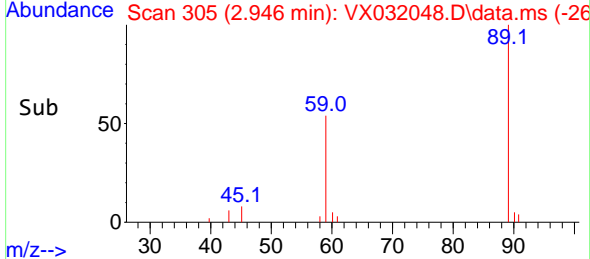
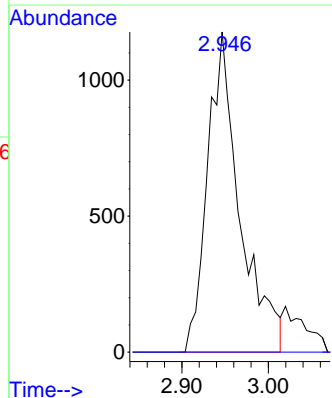
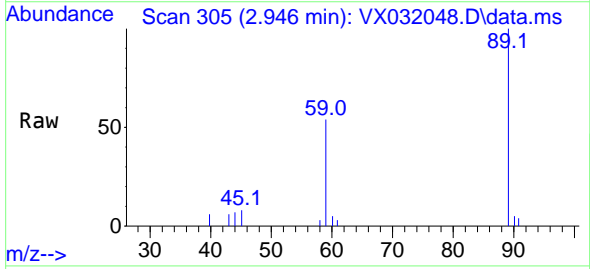


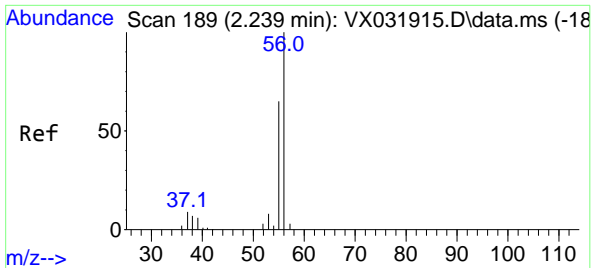
Tgt Ion:142 Resp: 280  
Ion Ratio Lower Upper  
142 100  
127 30.0 37.4 56.0#  
141 0.0 11.6 17.4#



#11  
Tert butyl alcohol  
Concen: 14.737 ug/l  
RT: 2.946 min Scan# 305  
Delta R.T. -0.061 min  
Lab File: VX032048.D  
Acq: 11 Oct 2022 19:38

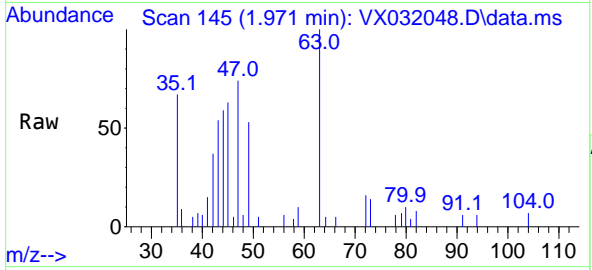
Tgt Ion: 59 Resp: 3046  
Ion Ratio Lower Upper  
59 100  
57 0.0 8.2 12.2#



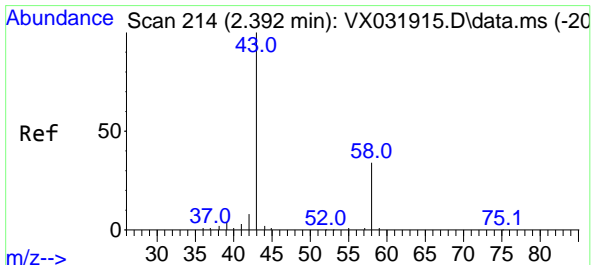
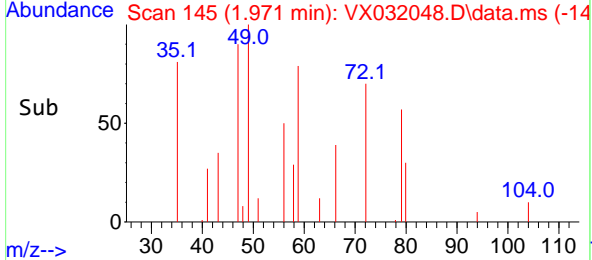
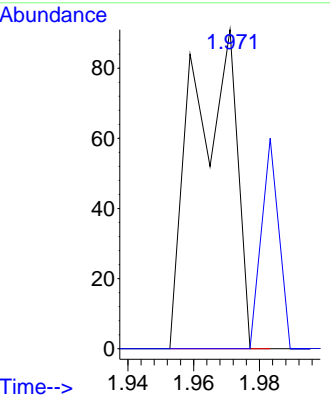


#13  
 Acrolein  
 Concen: Below Cal  
 RT: 1.971 min Scan# 14  
 Delta R.T. -0.268 min  
 Lab File: VX032048.D  
 Acq: 11 Oct 2022 19:38

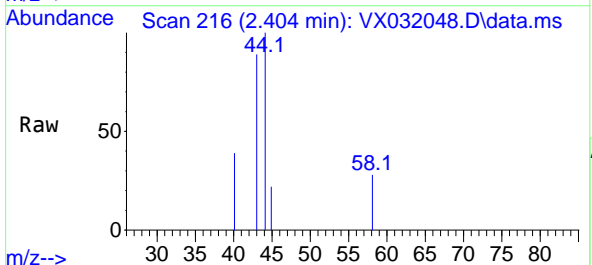
Instrument : MSVOA\_X  
 ClientSampleId : SB-05-2.0-3.0



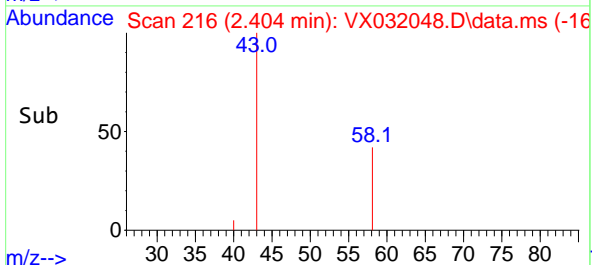
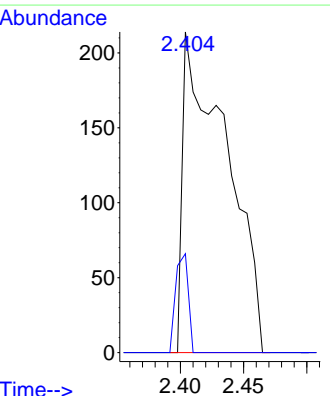
Tgt Ion: 56 Resp: 83  
 Ion Ratio Lower Upper  
 56 100  
 55 26.5 56.0 84.0#

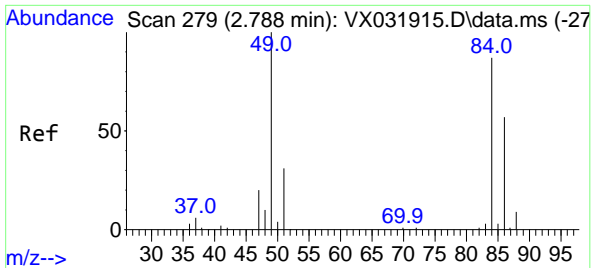


#16  
 Acetone  
 Concen: 0.907 ug/l  
 RT: 2.404 min Scan# 216  
 Delta R.T. 0.012 min  
 Lab File: VX032048.D  
 Acq: 11 Oct 2022 19:38



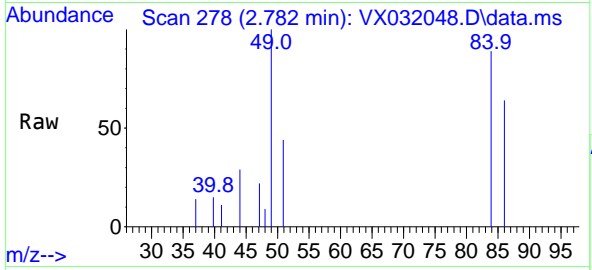
Tgt Ion: 43 Resp: 512  
 Ion Ratio Lower Upper  
 43 100  
 58 30.8 23.8 35.8





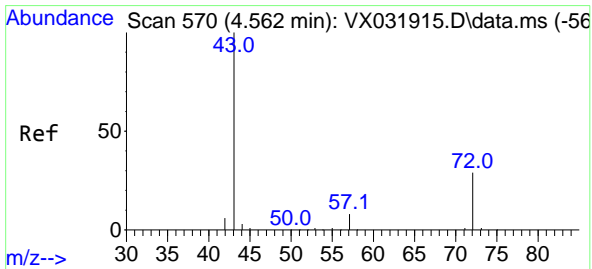
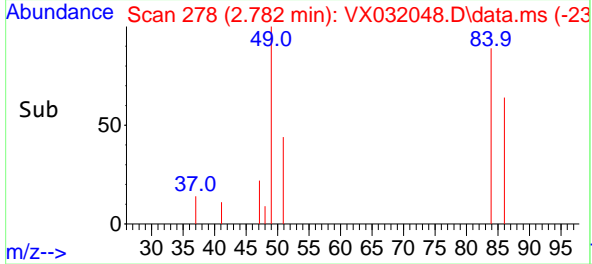
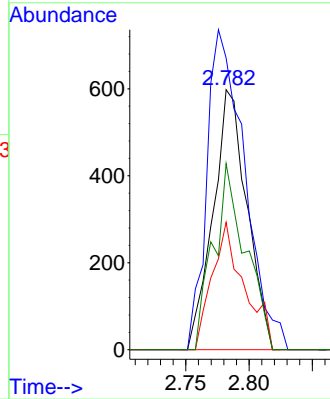
#20  
 Methylene Chloride  
 Concen: 0.751 ug/l  
 RT: 2.782 min Scan# 21  
 Delta R.T. -0.006 min  
 Lab File: VX032048.D  
 Acq: 11 Oct 2022 19:38

Instrument : MSVOA\_X  
 ClientSampleId : SB-05-2.0-3.0



Tgt Ion: 84 Resp: 1115

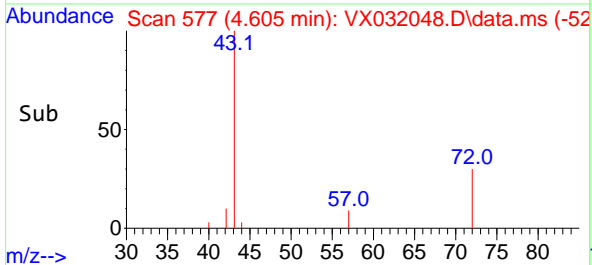
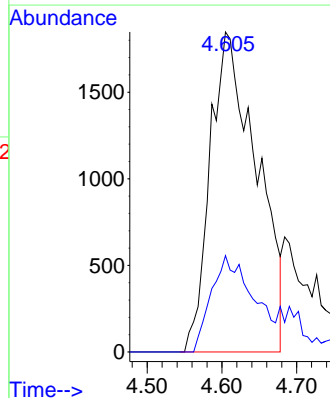
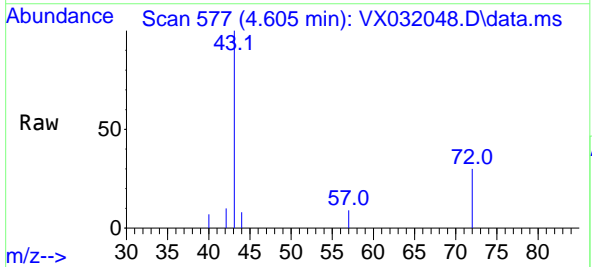
Ion	Ratio	Lower	Upper
84	100		
49	112.2	105.9	158.9
51	49.0	32.2	48.2#
86	71.6	50.8	76.2

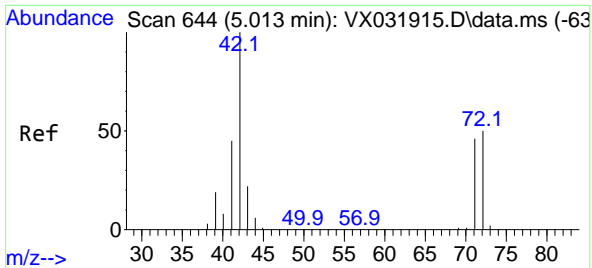


#25  
 2-Butanone  
 Concen: 9.066 ug/l  
 RT: 4.605 min Scan# 577  
 Delta R.T. 0.043 min  
 Lab File: VX032048.D  
 Acq: 11 Oct 2022 19:38

Tgt Ion: 43 Resp: 8002

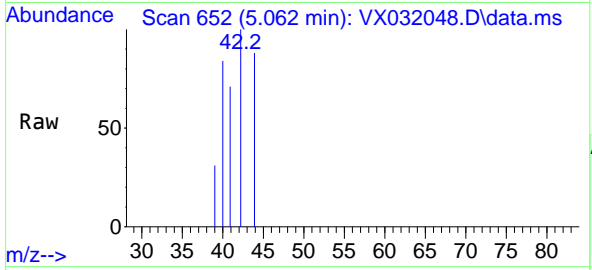
Ion	Ratio	Lower	Upper
43	100		
72	30.1	21.1	31.7





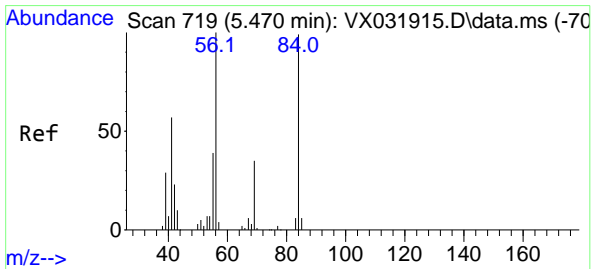
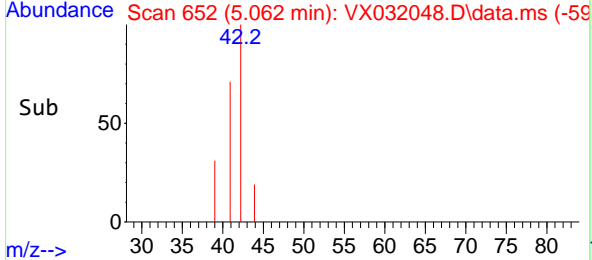
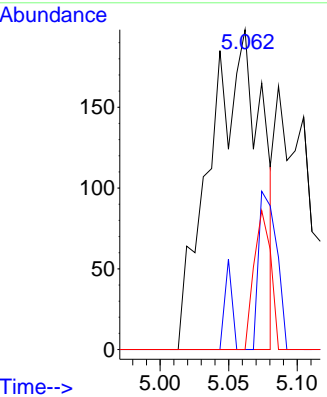
#29  
 Tetrahydrofuran  
 Concen: 0.913 ug/l  
 RT: 5.062 min Scan# 61  
 Delta R.T. 0.049 min  
 Lab File: VX032048.D  
 Acq: 11 Oct 2022 19:38

Instrument : MSVOA\_X  
 ClientSampleId : SB-05-2.0-3.0

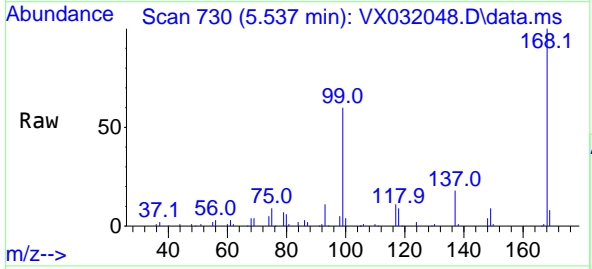


Tgt Ion: 42 Resp: 520

Ion	Ratio	Lower	Upper
42	100		
72	17.1	36.4	54.6#
71	14.0	33.5	50.3#

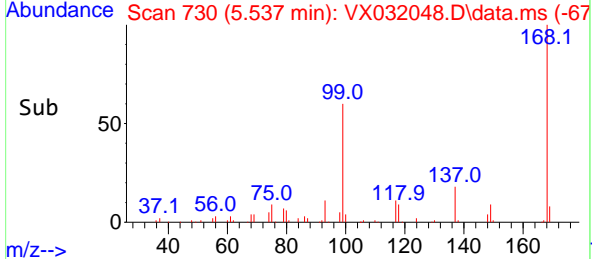
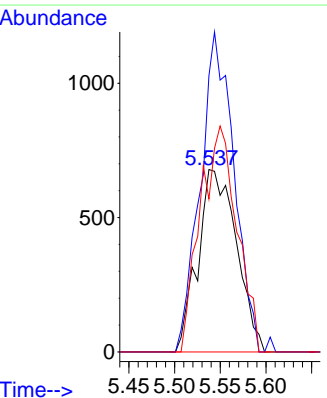


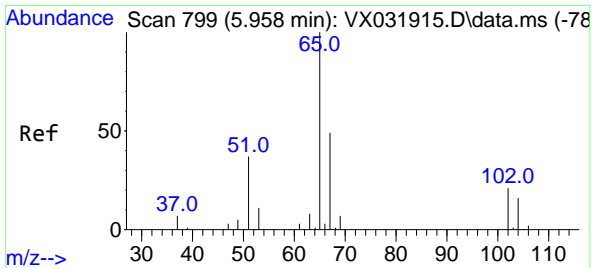
#31  
 Cyclohexane  
 Concen: 1.004 ug/l  
 RT: 5.537 min Scan# 730  
 Delta R.T. 0.067 min  
 Lab File: VX032048.D  
 Acq: 11 Oct 2022 19:38



Tgt Ion: 56 Resp: 1993

Ion	Ratio	Lower	Upper
56	100		
69	151.3	25.1	37.7#
84	83.8	70.2	105.4

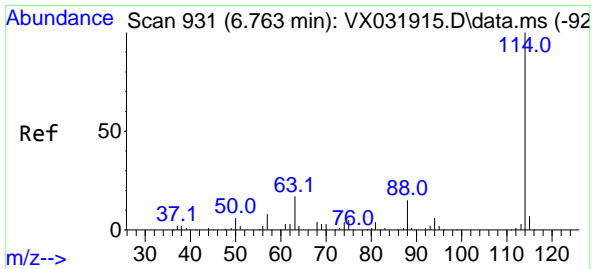
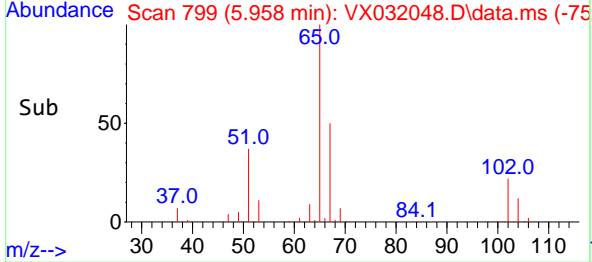
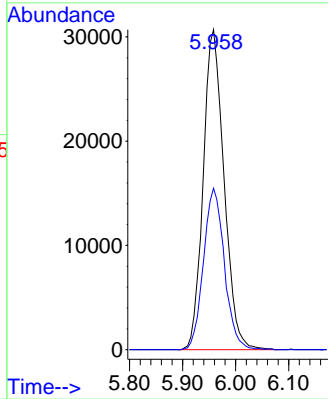
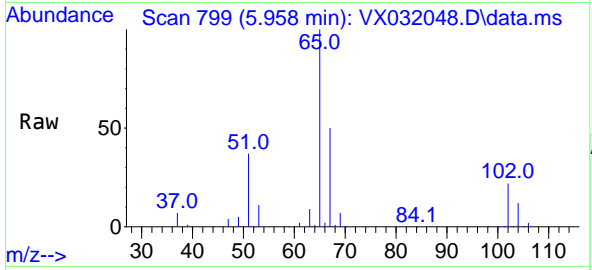




#33  
 1,2-Dichloroethane-d4  
 Concen: 50.384 ug/l  
 RT: 5.958 min Scan# 799  
 Delta R.T. 0.000 min  
 Lab File: VX032048.D  
 Acq: 11 Oct 2022 19:38

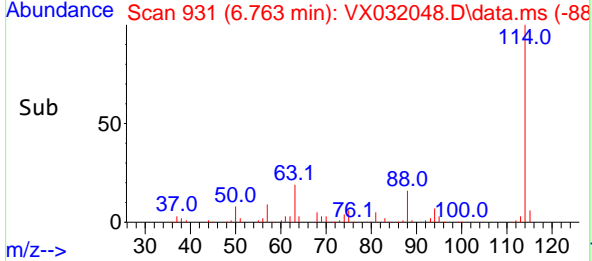
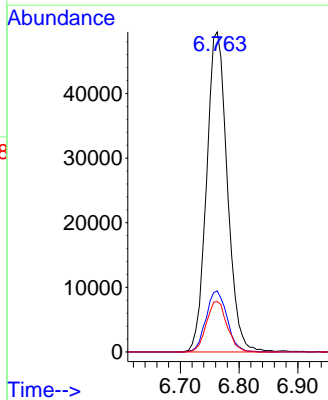
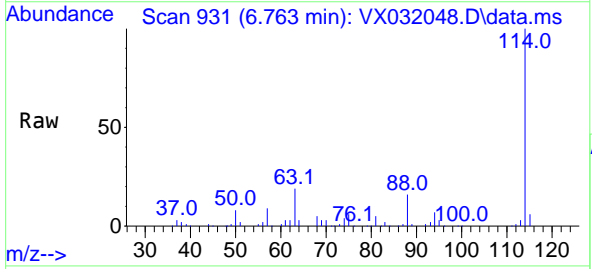
Instrument : MSVOA\_X  
 ClientSampleId : SB-05-2.0-3.0

Tgt Ion: 65 Resp: 83704  
 Ion Ratio Lower Upper  
 65 100  
 67 50.6 0.0 102.4

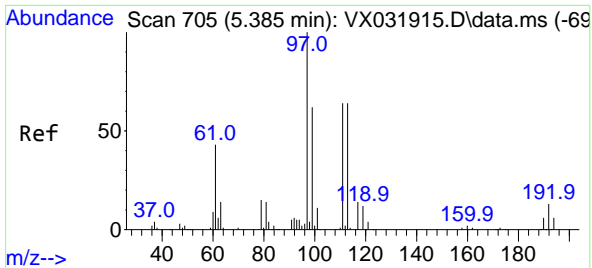


#34  
 1,4-Difluorobenzene  
 Concen: 50.000 ug/l  
 RT: 6.763 min Scan# 931  
 Delta R.T. -0.000 min  
 Lab File: VX032048.D  
 Acq: 11 Oct 2022 19:38

Tgt Ion: 114 Resp: 121397  
 Ion Ratio Lower Upper  
 114 100  
 63 19.1 0.0 42.6  
 88 15.8 0.0 33.0

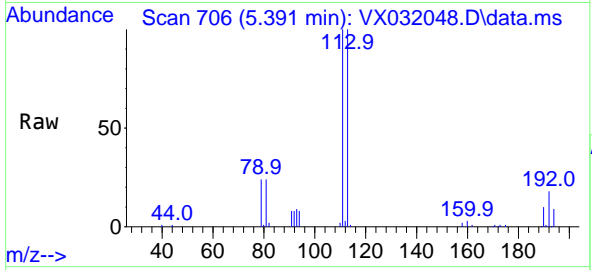




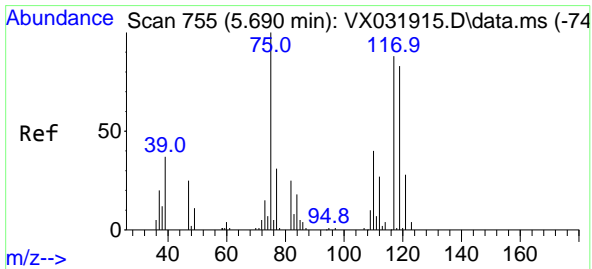
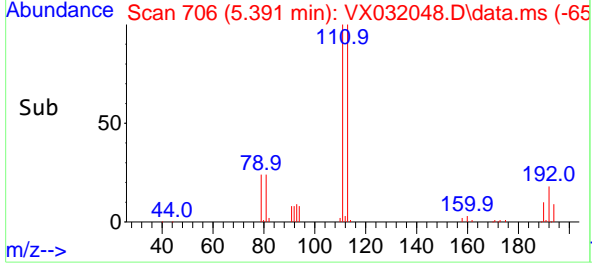
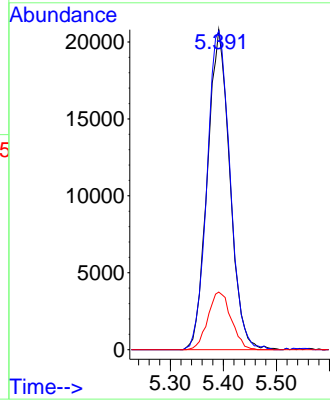


#35  
 Dibromofluoromethane  
 Concen: 44.493 ug/l  
 RT: 5.391 min Scan# 705  
 Delta R.T. 0.006 min  
 Lab File: VX032048.D  
 Acq: 11 Oct 2022 19:38

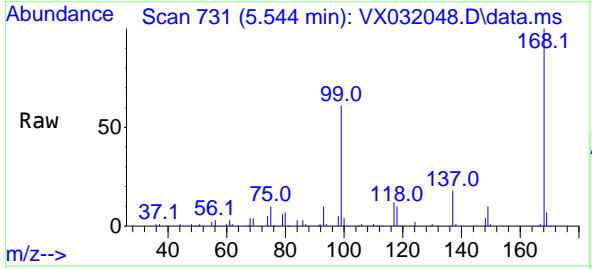
Instrument : MSVOA\_X  
 ClientSampleId : SB-05-2.0-3.0



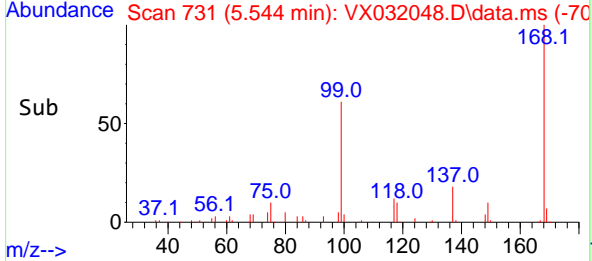
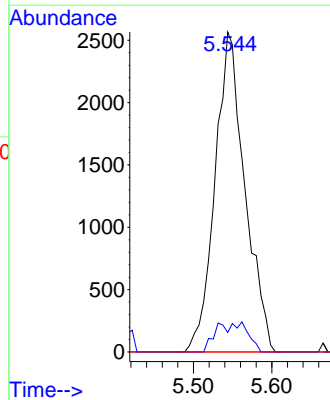
Tgt Ion:113 Resp: 61140  
 Ion Ratio Lower Upper  
 113 100  
 111 101.9 82.4 123.6  
 192 18.6 14.1 21.1

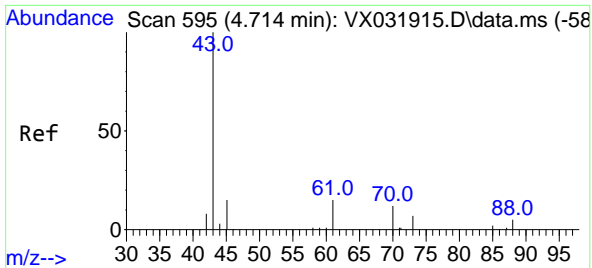


#36  
 1,1-Dichloropropene  
 Concen: 3.733 ug/l  
 RT: 5.544 min Scan# 731  
 Delta R.T. -0.146 min  
 Lab File: VX032048.D  
 Acq: 11 Oct 2022 19:38



Tgt Ion: 75 Resp: 6803  
 Ion Ratio Lower Upper  
 75 100  
 110 4.4 17.5 52.5#  
 77 0.0 24.9 37.3#



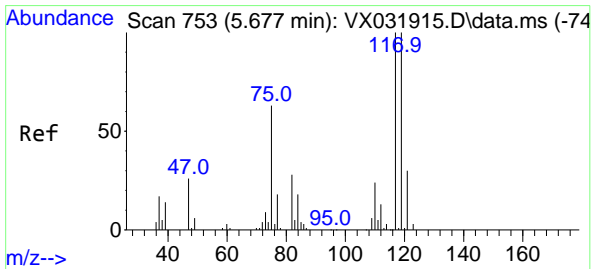
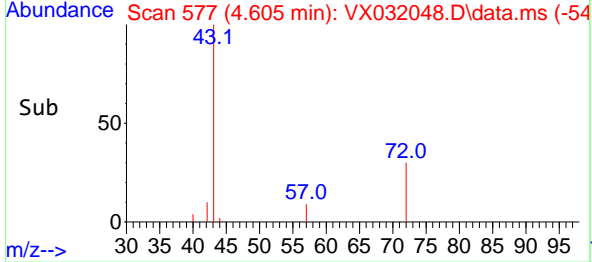
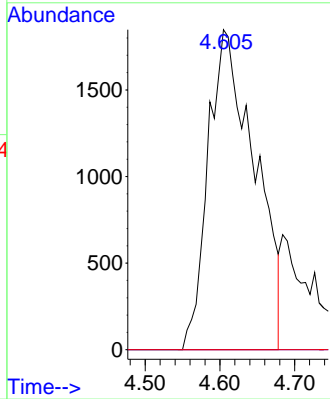
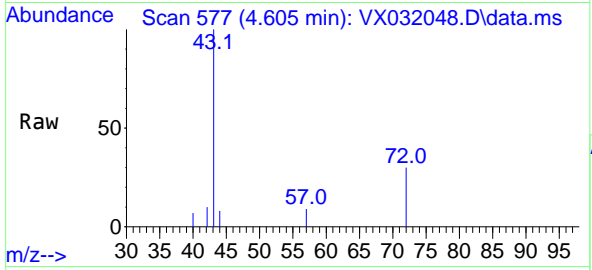


#37  
 Ethyl Acetate  
 Concen: 4.664 ug/l  
 RT: 4.605 min Scan# 511  
 Delta R.T. -0.109 min  
 Lab File: VX032048.D  
 Acq: 11 Oct 2022 19:38

Instrument : MSVOA\_X  
 ClientSampleId : SB-05-2.0-3.0

Tgt Ion: 43 Resp: 8002

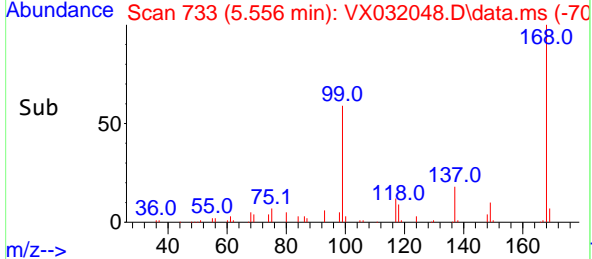
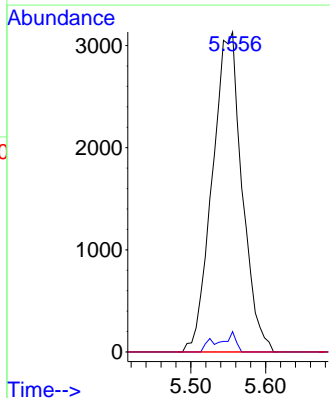
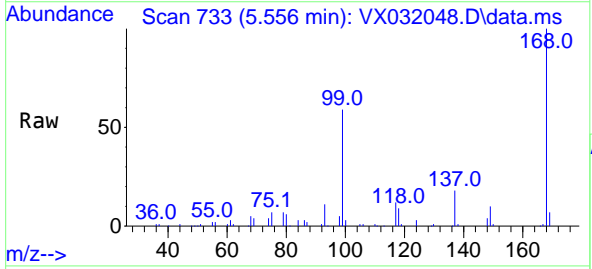
Ion	Ratio	Lower	Upper
43	100		
61	0.0	11.1	16.7#
70	0.0	8.6	13.0#

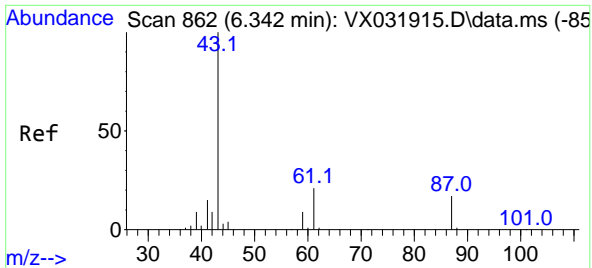


#38  
 Carbon Tetrachloride  
 Concen: 4.656 ug/l  
 RT: 5.556 min Scan# 733  
 Delta R.T. -0.121 min  
 Lab File: VX032048.D  
 Acq: 11 Oct 2022 19:38

Tgt Ion: 117 Resp: 8674

Ion	Ratio	Lower	Upper
117	100		
119	6.4	74.6	112.0#
121	0.0	25.3	37.9#



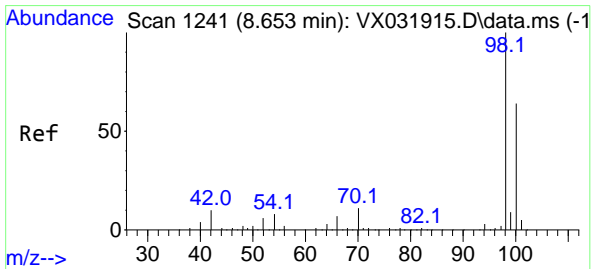
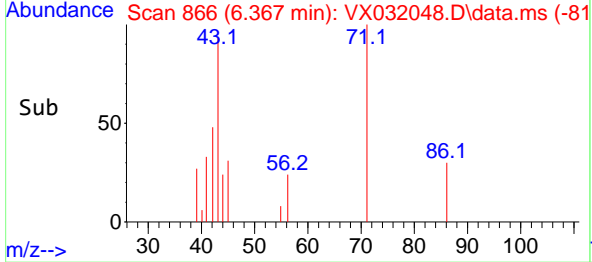
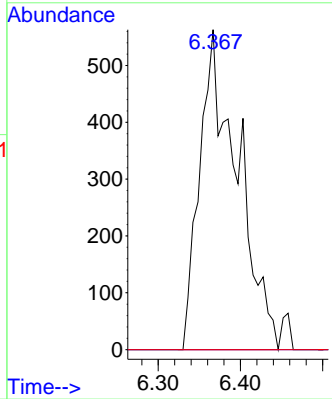
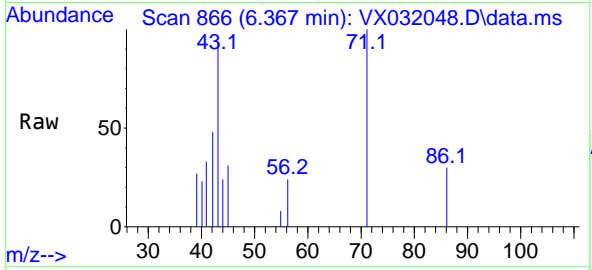


#43  
 Isopropyl Acetate  
 Concen: 0.688 ug/l  
 RT: 6.367 min Scan# 80  
 Delta R.T. 0.025 min  
 Lab File: VX032048.D  
 Acq: 11 Oct 2022 19:38

Instrument : MSVOA\_X  
 ClientSampleId : SB-05-2.0-3.0

Tgt Ion: 43 Resp: 1792

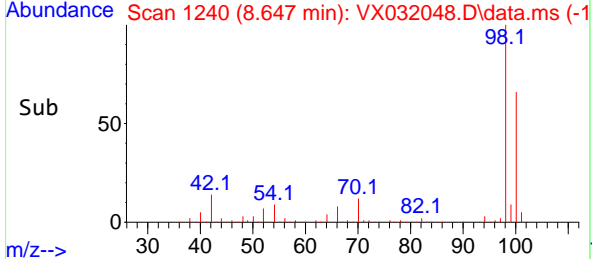
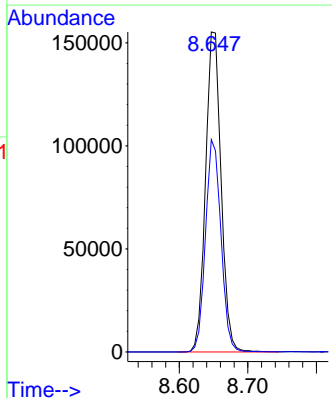
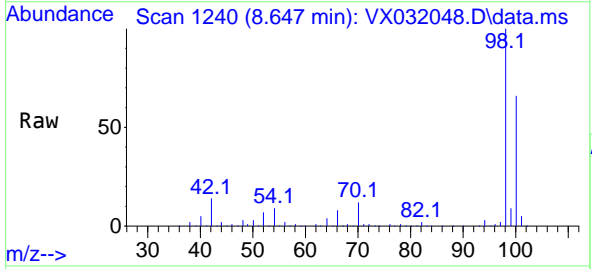
Ion	Ratio	Lower	Upper
43	100		
61	0.0	15.3	22.9#
87	0.0	10.6	15.8#

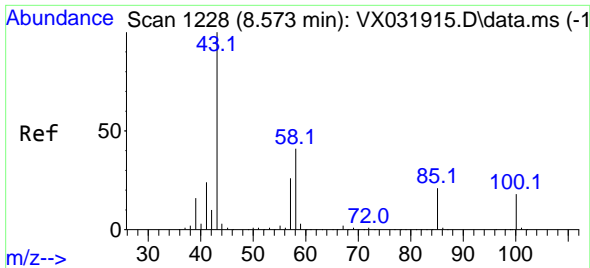


#50  
 Toluene-d8  
 Concen: 49.649 ug/l  
 RT: 8.647 min Scan# 1240  
 Delta R.T. -0.006 min  
 Lab File: VX032048.D  
 Acq: 11 Oct 2022 19:38

Tgt Ion: 98 Resp: 245497

Ion	Ratio	Lower	Upper
98	100		
100	65.9	52.5	78.7

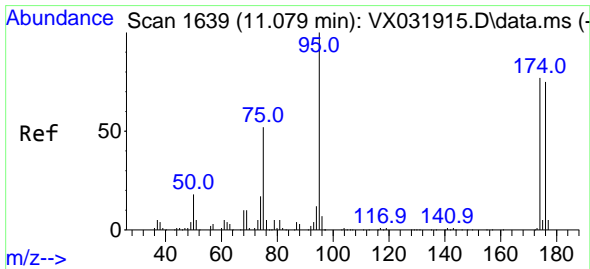
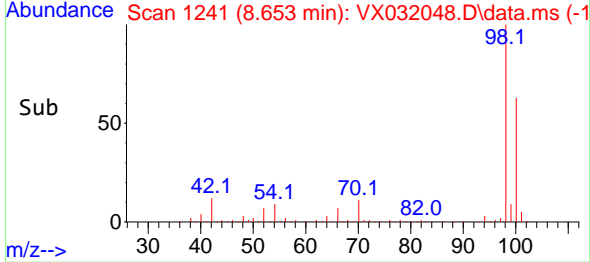
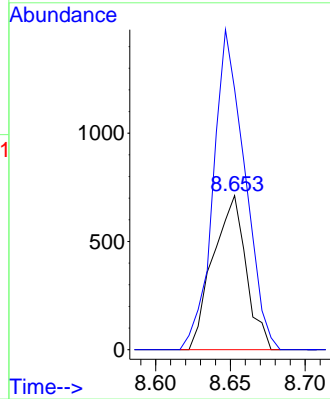
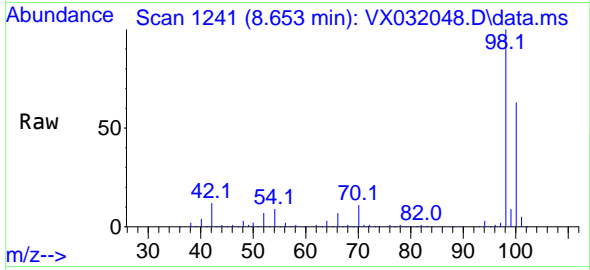




#51  
 4-Methyl-2-Pentanone  
 Concen: 0.634 ug/l  
 RT: 8.653 min Scan# 11  
 Delta R.T. 0.080 min  
 Lab File: VX032048.D  
 Acq: 11 Oct 2022 19:38

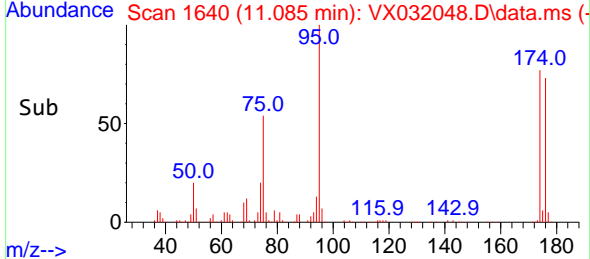
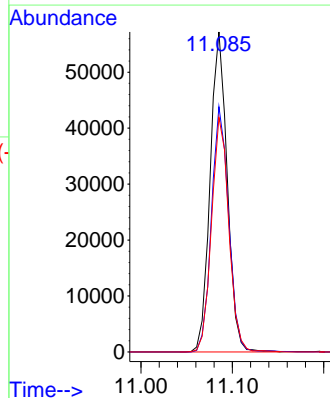
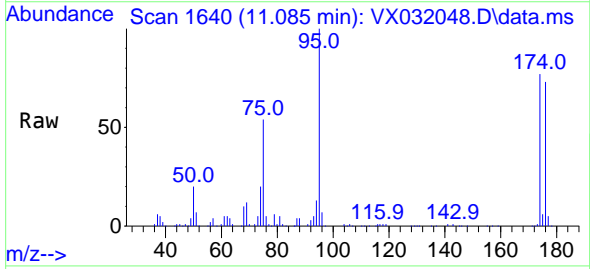
Instrument : MSVOA\_X  
 ClientSampleId : SB-05-2.0-3.0

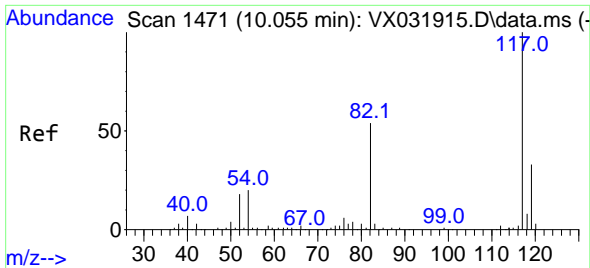
Tgt Ion: 43 Resp: 1094  
 Ion Ratio Lower Upper  
 43 100  
 58 198.5 30.6 46.0#



#62  
 4-Bromofluorobenzene  
 Concen: 42.251 ug/l  
 RT: 11.085 min Scan# 1640  
 Delta R.T. 0.006 min  
 Lab File: VX032048.D  
 Acq: 11 Oct 2022 19:38

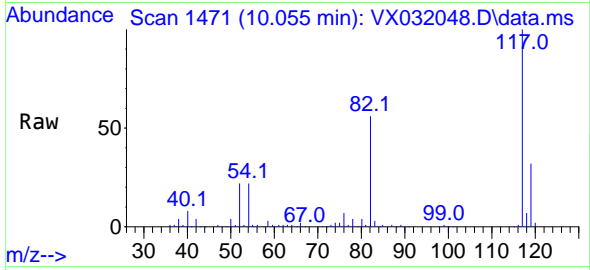
Tgt Ion: 95 Resp: 73857  
 Ion Ratio Lower Upper  
 95 100  
 174 77.7 0.0 153.2  
 176 74.6 0.0 144.0



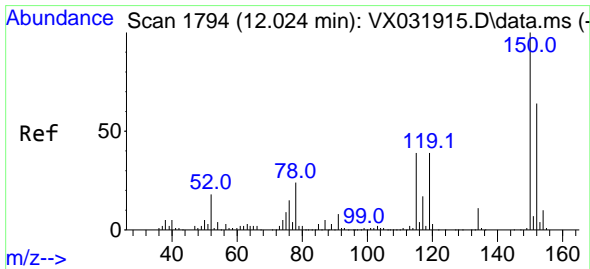
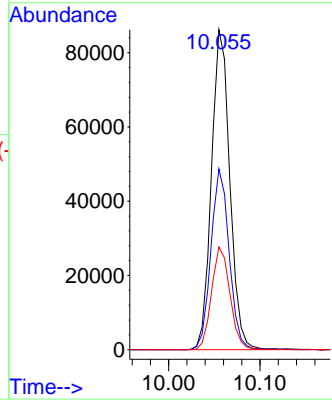
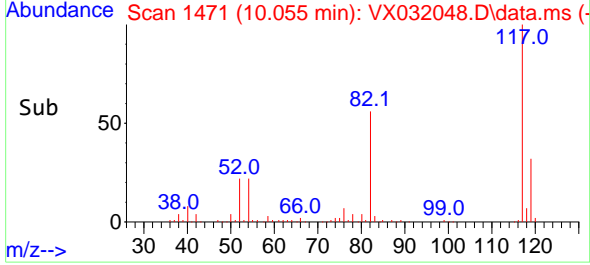


#63  
 Chlorobenzene-d5  
 Concen: 50.000 ug/l  
 RT: 10.055 min Scan# 1471  
 Delta R.T. -0.000 min  
 Lab File: VX032048.D  
 Acq: 11 Oct 2022 19:38

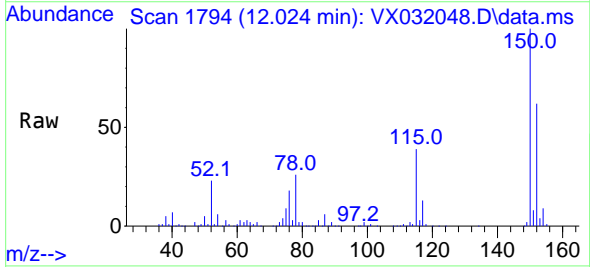
Instrument : MSVOA\_X  
 ClientSampleId : SB-05-2.0-3.0



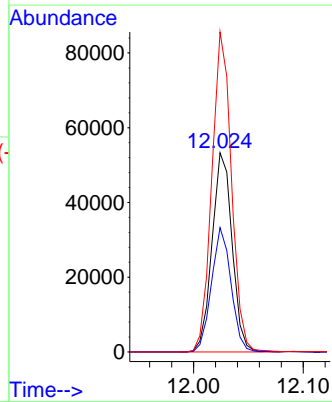
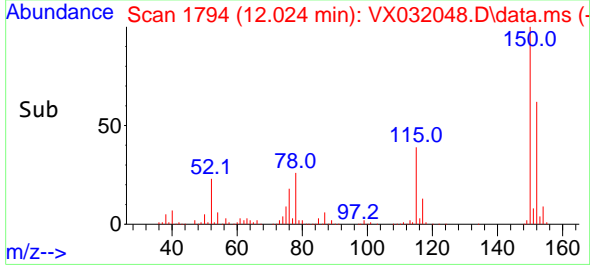
Tgt Ion:117 Resp: 120104  
 Ion Ratio Lower Upper  
 117 100  
 82 56.5 46.8 70.2  
 119 32.1 26.4 39.6

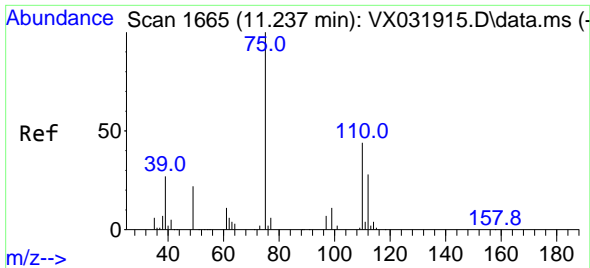


#72  
 1,4-Dichlorobenzene-d4  
 Concen: 50.000 ug/l  
 RT: 12.024 min Scan# 1794  
 Delta R.T. 0.000 min  
 Lab File: VX032048.D  
 Acq: 11 Oct 2022 19:38



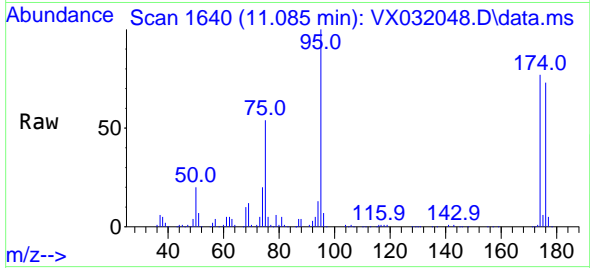
Tgt Ion:152 Resp: 67842  
 Ion Ratio Lower Upper  
 152 100  
 115 60.9 43.4 130.1  
 150 156.9 0.0 346.8



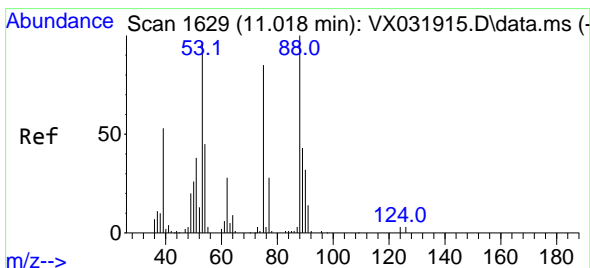
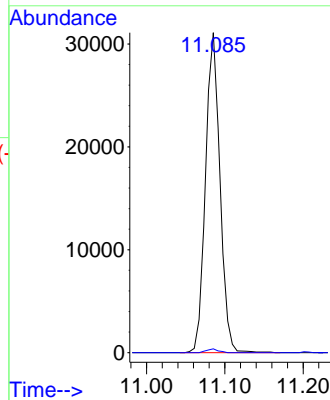
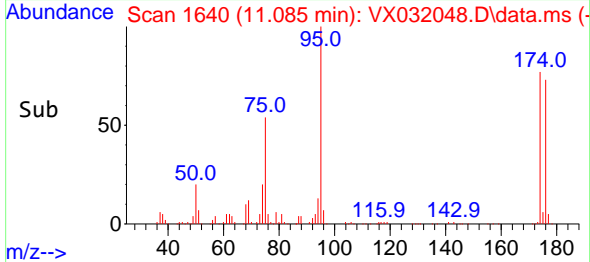


#76  
 1,2,3-Trichloropropane  
 Concen: 28.602 ug/l  
 RT: 11.085 min Scan# 1640  
 Delta R.T. -0.152 min  
 Lab File: VX032048.D  
 Acq: 11 Oct 2022 19:38

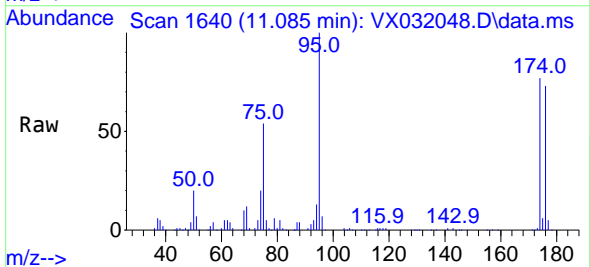
Instrument : MSVOA\_X  
 ClientSampleId : SB-05-2.0-3.0



Tgt Ion: 75 Resp: 39769  
 Ion Ratio Lower Upper  
 75 100  
 77 1.0 20.3 60.9#



#81  
 trans-1,4-Dichloro-2-butene  
 Concen: 97.793 ug/l  
 RT: 11.085 min Scan# 1640  
 Delta R.T. 0.067 min  
 Lab File: VX032048.D  
 Acq: 11 Oct 2022 19:38



Tgt Ion: 75 Resp: 39769  
 Ion Ratio Lower Upper  
 75 100  
 53 0.0 77.6 116.4#  
 89 0.1 37.4 56.0#

