

Data Path : Z:\VOASRV\HPCHEM1\MSVOA\_X\DATA\VX101218\  
 Data File : VX005289.D  
 Acq On : 12 Oct 2018 13:25  
 Operator : JC/MD  
 Sample : J5373-02  
 Misc : 5.0mL/MSVOA\_X/WATER  
 ALS Vial : 10 Sample Multiplier: 1

Instrument :  
 MSVOA\_X  
 ClientSampleId :  
 RB37708-7211990-45911RT

Quant Time: Oct 12 17:05:56 2018  
 Quant Method : Z:\VOASRV\HPCHEM1\MSVOA\_X\METHOD\82X101218W.M  
 Quant Title : SW846 8260  
 QLast Update : Fri Oct 12 11:28:43 2018  
 Response via : Initial Calibration

Internal Standards	R.T.	QIon	Response	Conc	Units	Dev(Min)
1) Pentafluorobenzene	5.66	168	268602	50.00	ug/l	0.00
34) 1,4-Difluorobenzene	6.85	114	402896	50.00	ug/l	-0.01
63) Chlorobenzene-d5	10.12	117	364040	50.00	ug/l	0.00
72) 1,4-Dichlorobenzene-d4	12.08	152	174298	50.00	ug/l	0.00

## System Monitoring Compounds

33) 1,2-Dichloroethane-d4	6.07	65	161777	54.27	ug/l	0.00
Spiked Amount	50.000		Recovery	=	108.54%	
35) Dibromofluoromethane	5.50	113	123939	46.45	ug/l	0.00
Spiked Amount	50.000		Recovery	=	92.90%	
50) Toluene-d8	8.71	98	478641	52.25	ug/l	0.00
Spiked Amount	50.000		Recovery	=	104.50%	
62) 4-Bromofluorobenzene	11.14	95	158754	46.13	ug/l	0.00
Spiked Amount	50.000		Recovery	=	92.26%	

## Target Compounds

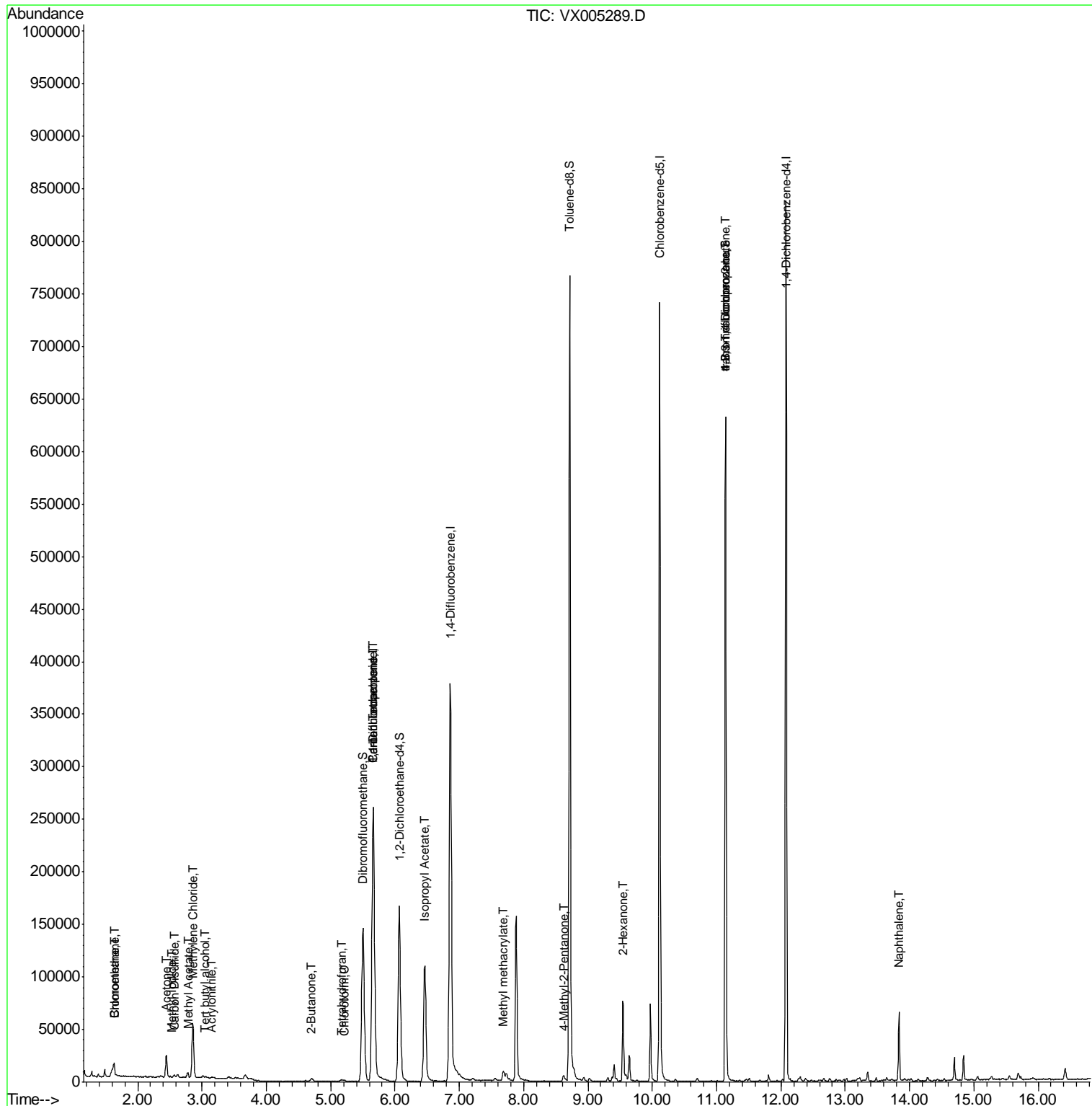
						Qvalue
5) Bromomethane	1.64	94	974	1.14	ug/l	87
6) Chloroethane	1.63	64	361	0.51	ug/l #	51
10) Methyl Iodide	2.53	142	480	2.66	ug/l #	78
11) Tert butyl alcohol	3.06	59	1018	1.21	ug/l #	79
13) Acrolein	2.29	56	388	Below	Cal	88
15) Acrylonitrile	3.15	53	477	0.25	ug/l #	83
16) Acetone	2.45	43	23191	13.45	ug/l	96
17) Carbon Disulfide	2.57	76	2677	0.38	ug/l	97
18) Methyl Acetate	2.78	43	5172	1.05	ug/l	98
20) Methylene Chloride	2.85	84	23059	8.08	ug/l	94
25) 2-Butanone	4.70	43	4951	1.96	ug/l	94
29) Tetrahydrofuran	5.17	42	1704	1.06	ug/l	92
30) Chloroform	5.21	83	1199	0.26	ug/l #	72
36) 1,1-Dichloropropene	5.66	75	18756	4.81	ug/l #	45
38) Carbon Tetrachloride	5.66	117	24928	6.36	ug/l #	16
43) Isopropyl Acetate	6.46	43	152332	22.79	ug/l	96
44) Trichloroethene	7.21	130	674	Below	Cal	79
48) Methyl methacrylate	7.69	41	6826	1.97	ug/l #	23
51) 4-Methyl-2-Pentanone	8.62	43	1626	0.35	ug/l #	52
59) 2-Hexanone	9.54	43	8651	2.32	ug/l #	56
76) 1,2,3-Trichloropropane	11.14	75	78038	23.08	ug/l #	37
81) trans-1,4-Dichloro-2-buten	11.14	75	78038	70.13	ug/l #	10
95) Naphthalene	13.83	128	40274	3.35	ug/l	99

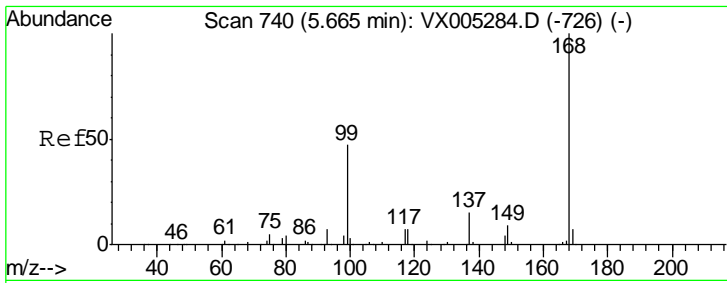
(#) = qualifier out of range (m) = manual integration (+) = signals summed

Data Path : Z:\VOASRV\HPCHEM1\MSVOA\_X\DATA\VX101218\  
 Data File : VX005289.D  
 Acq On : 12 Oct 2018 13:25  
 Operator : JC/MD  
 Sample : J5373-02  
 Misc : 5.0mL/MSVOA\_X/WATER  
 ALS Vial : 10 Sample Multiplier: 1

Instrument :  
 MSVOA\_X  
 Client Sampled :  
 RB37708-7211990-45911RT

Quant Time: Oct 12 17:05:56 2018  
 Quant Method : Z:\VOASRV\HPCHEM1\MSVOA\_X\METHOD\82X101218W.M  
 Quant Title : SW846 8260  
 QLast Update : Fri Oct 12 11:28:43 2018  
 Response via : Initial Calibration

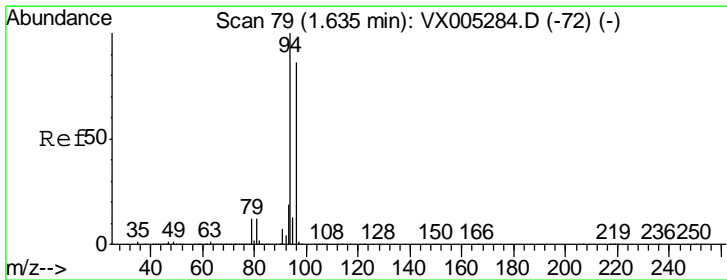
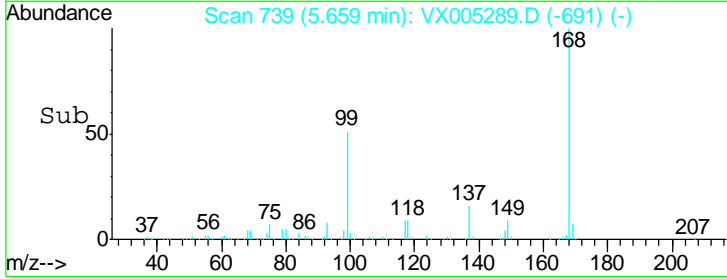
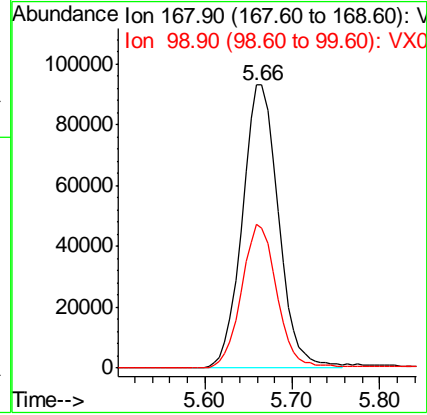
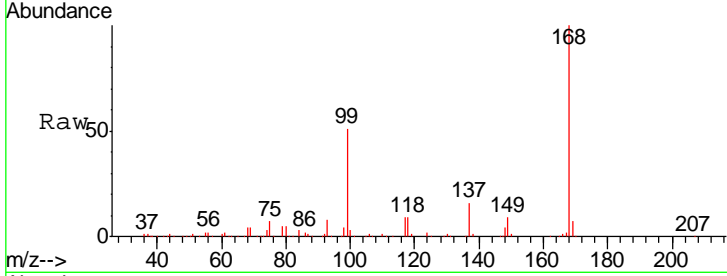




#1  
 Pentafluorobenzene  
 Concen: 50.00 ug/l  
 RT: 5.66 min Scan# 739  
 Delta R.T. -0.01 min  
 Lab File: VX005289.D  
 Acq: 12 Oct 2018 13:25

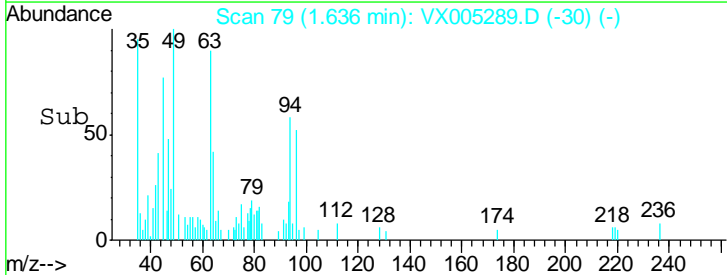
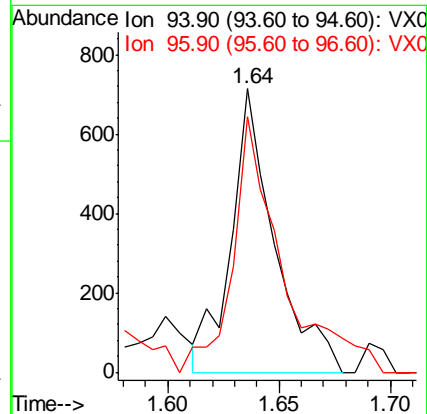
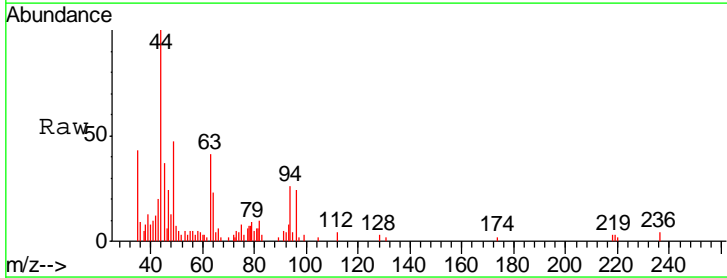
Instrument :  
 MSVOA\_X  
 ClientSampled :  
 RB37708-7211990-45911RT

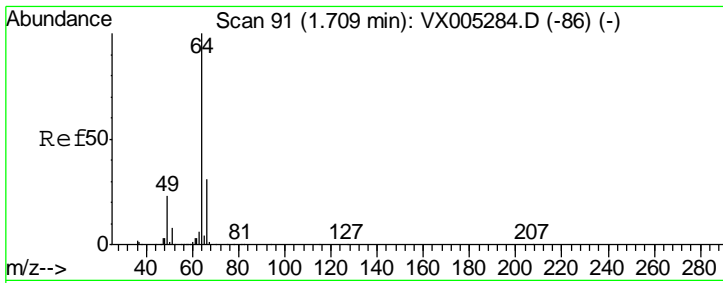
Tgt Ion: 168 Resp: 268602  
 Ion Ratio Lower Upper  
 168 100  
 99 50.7 39.9 59.9



#5  
 Bromomethane  
 Concen: 1.14 ug/l  
 RT: 1.64 min Scan# 79  
 Delta R.T. 0.00 min  
 Lab File: VX005289.D  
 Acq: 12 Oct 2018 13:25

Tgt Ion: 94 Resp: 974  
 Ion Ratio Lower Upper  
 94 100  
 96 81.1 74.5 111.7

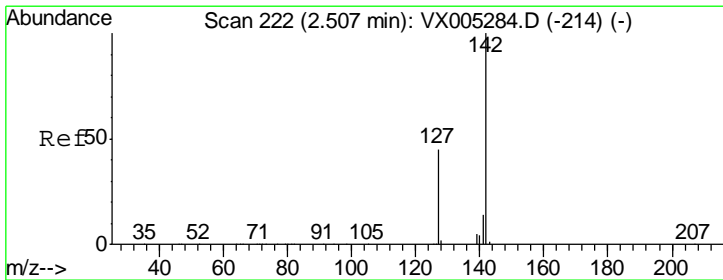
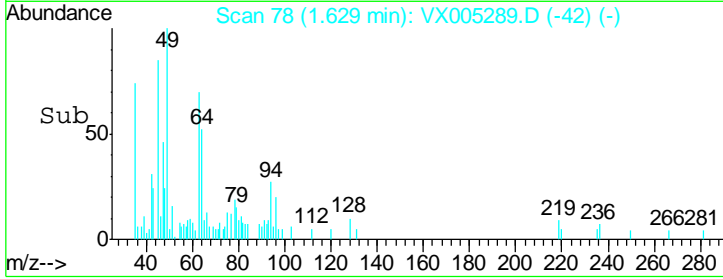
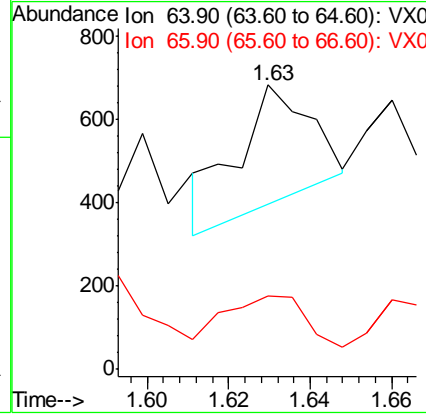
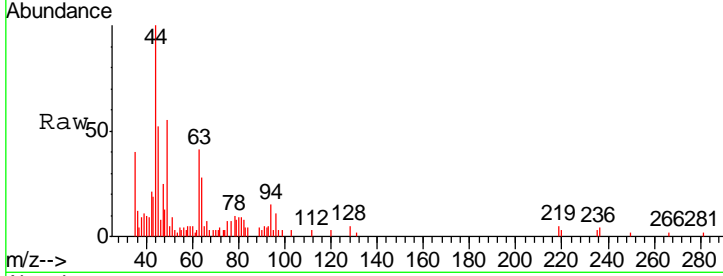




#6  
 Chloroethane  
 Concen: 0.51 ug/l  
 RT: 1.63 min Scan# 78  
 Delta R.T. -0.08 min  
 Lab File: VX005289.D  
 Acq: 12 Oct 2018 13:25

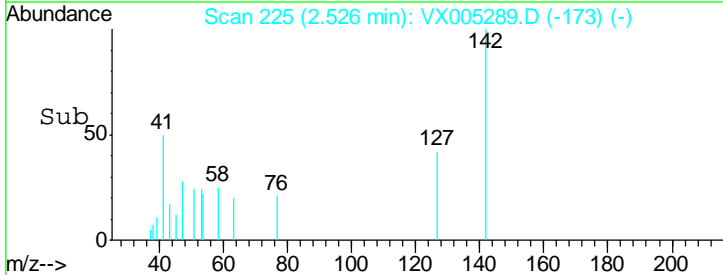
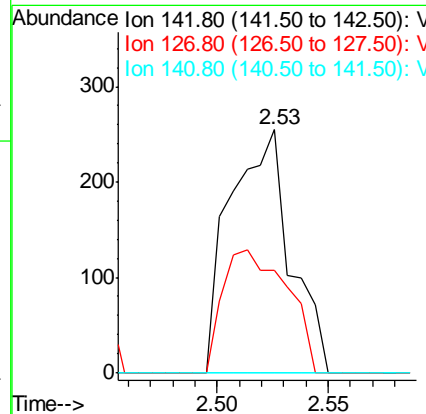
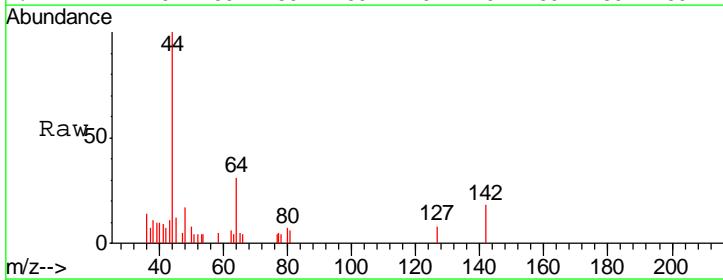
Instrument :  
 MSVOA\_X  
 ClientSampled :  
 RB37708-7211990-45911RT

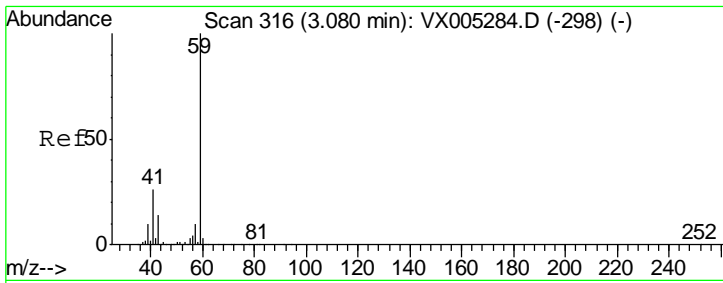
Tgt Ion: 64 Resp: 361  
 Ion Ratio Lower Upper  
 64 100  
 66 57.7 24.6 36.8#



#10  
 Methyl Iodide  
 Concen: 2.66 ug/l  
 RT: 2.53 min Scan# 225  
 Delta R.T. 0.02 min  
 Lab File: VX005289.D  
 Acq: 12 Oct 2018 13:25

Tgt Ion: 142 Resp: 480  
 Ion Ratio Lower Upper  
 142 100  
 127 53.8 33.8 50.6#  
 141 0.0 11.4 17.0#

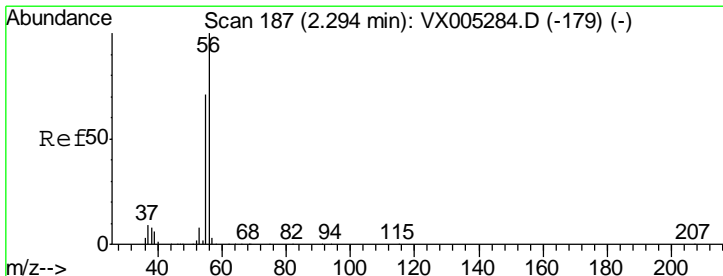
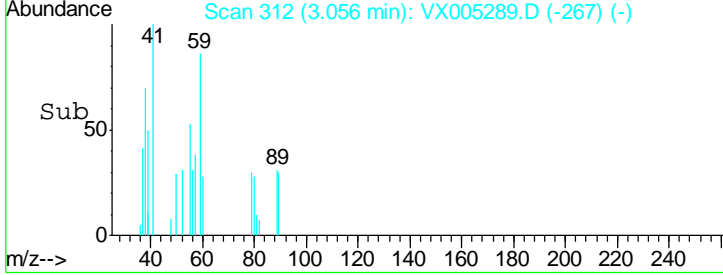
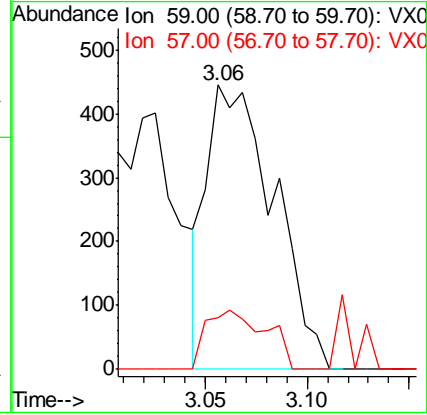
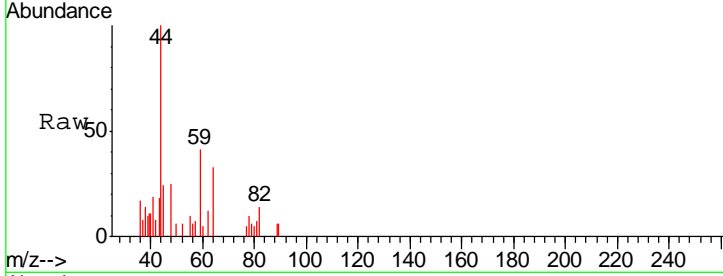




#11  
 Tert butyl alcohol  
 Concen: 1.21 ug/l  
 RT: 3.06 min Scan# 312  
 Delta R.T. -0.02 min  
 Lab File: VX005289.D  
 Acq: 12 Oct 2018 13:25

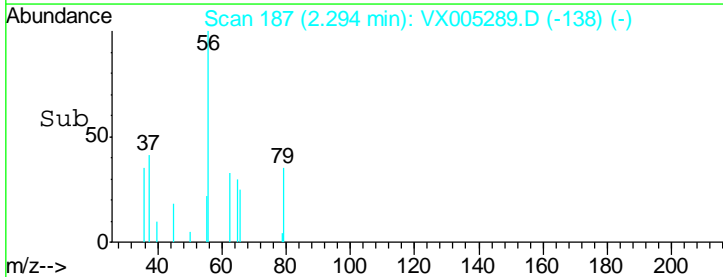
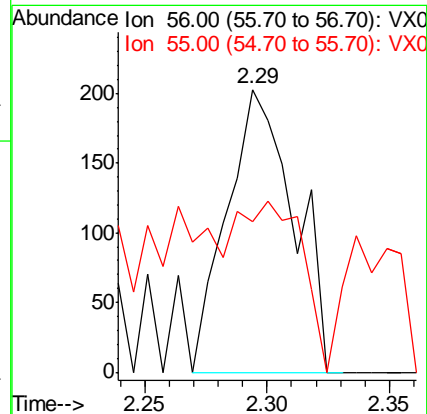
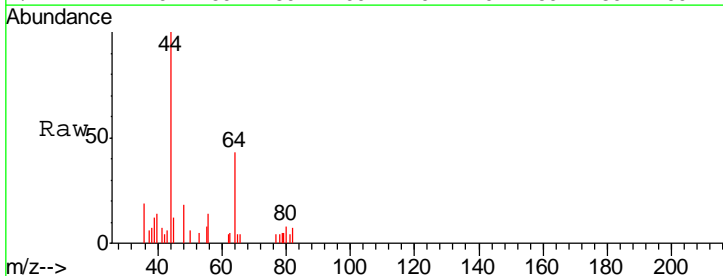
Instrument : MSVOA\_X  
 ClientSampleID : RB37708-7211990-45911RT

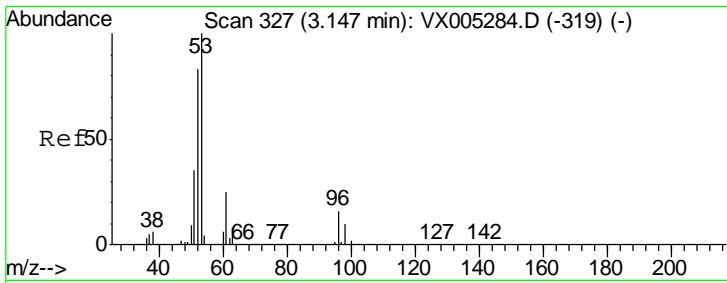
Tgt Ion: 59 Resp: 1018  
 Ion Ratio Lower Upper  
 59 100  
 57 18.2 8.2 12.4#



#13  
 Acrolein  
 Concen: Below Cal  
 RT: 2.29 min Scan# 187  
 Delta R.T. 0.00 min  
 Lab File: VX005289.D  
 Acq: 12 Oct 2018 13:25

Tgt Ion: 56 Resp: 388  
 Ion Ratio Lower Upper  
 56 100  
 55 59.0 54.7 82.1

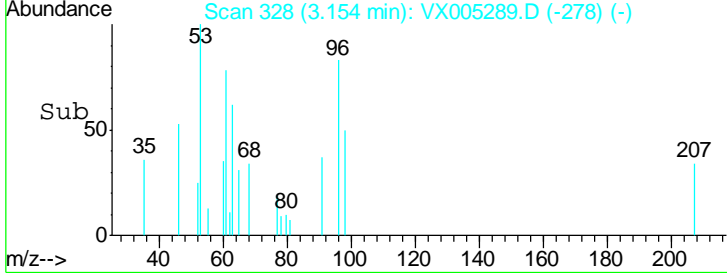
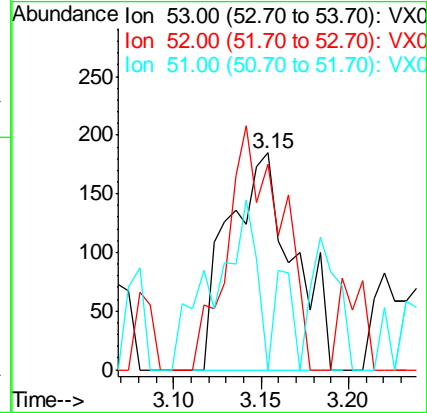
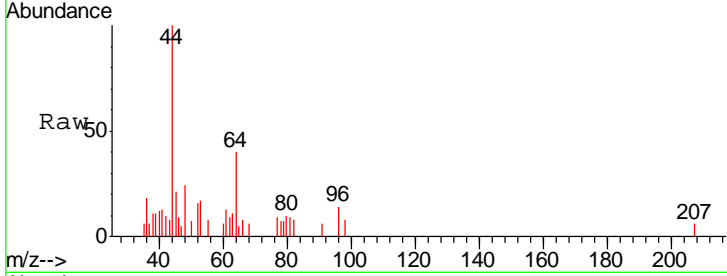




#15  
 Acrylonitrile  
 Concen: 0.25 ug/l  
 RT: 3.15 min Scan# 328  
 Delta R.T. 0.01 min  
 Lab File: VX005289.D  
 Acq: 12 Oct 2018 13:25

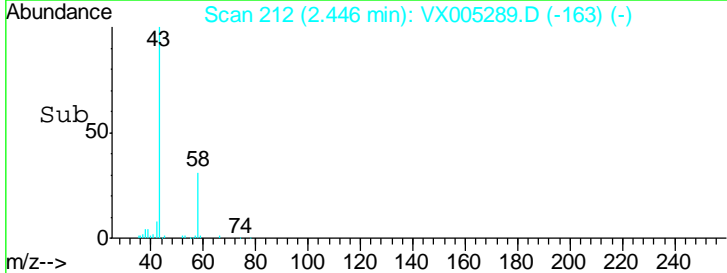
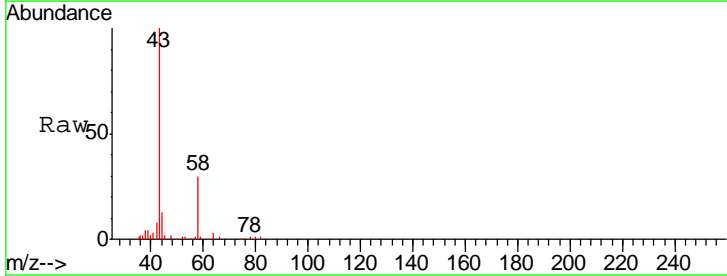
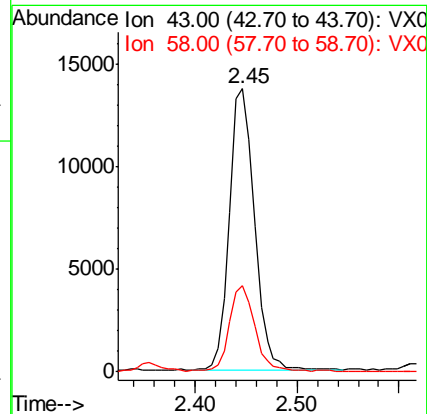
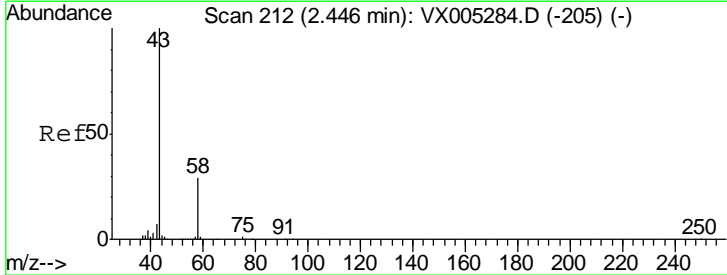
**Instrument :**  
 MSVOA\_X  
**ClientSampled :**  
 RB37708-7211990-45911RT

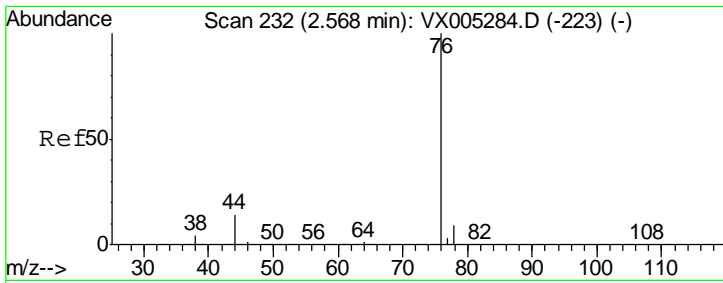
Tgt Ion	Resp	Lower	Upper
53	100		
52	92.7	65.2	97.8
51	51.2	28.2	42.2#



#16  
 Acetone  
 Concen: 13.45 ug/l  
 RT: 2.45 min Scan# 212  
 Delta R.T. 0.00 min  
 Lab File: VX005289.D  
 Acq: 12 Oct 2018 13:25

Tgt Ion	Resp	Lower	Upper
43	100		
58	30.7	26.2	39.4

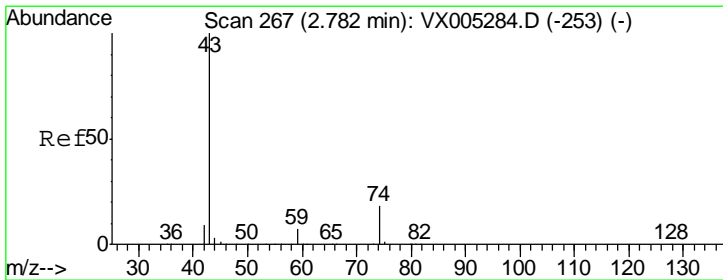
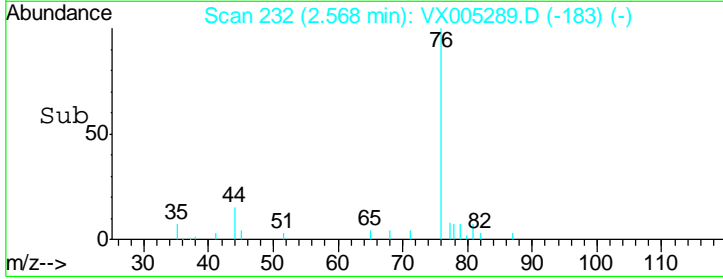
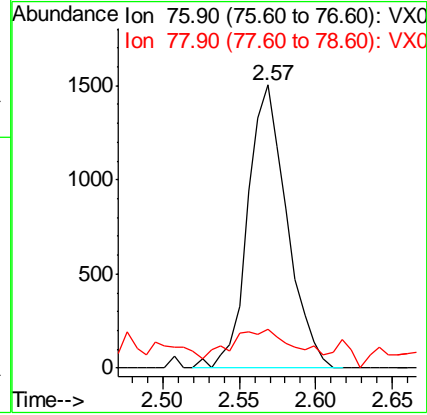
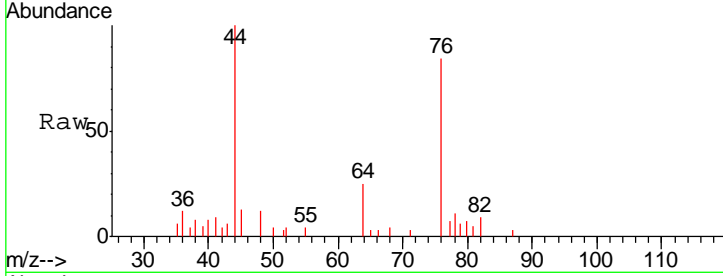




#17  
 Carbon Disulfide  
 Concen: 0.38 ug/l  
 RT: 2.57 min Scan# 232  
 Delta R.T. 0.00 min  
 Lab File: VX005289.D  
 Acq: 12 Oct 2018 13:25

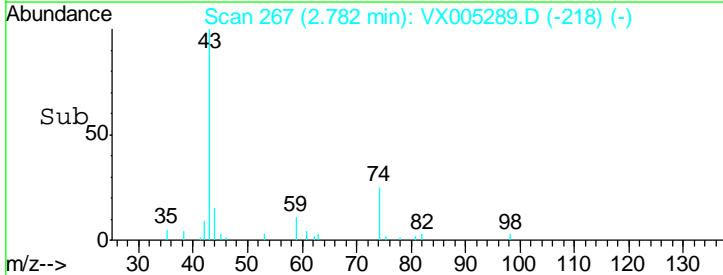
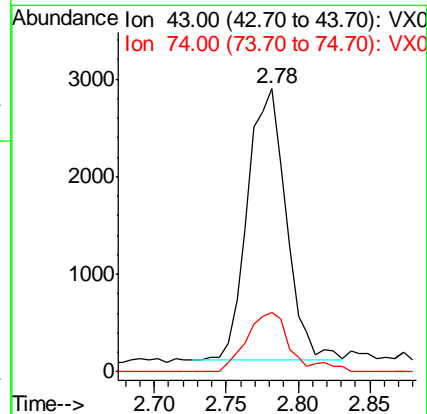
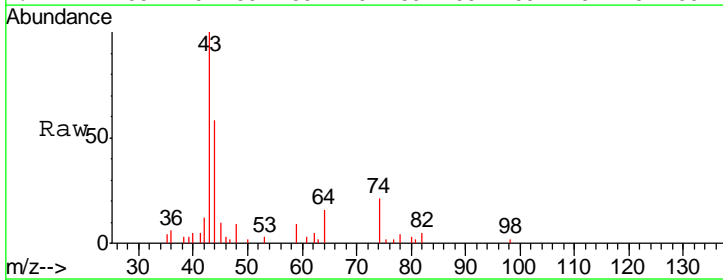
Instrument :  
 MSVOA\_X  
 ClientSampled :  
 RB37708-7211990-45911RT

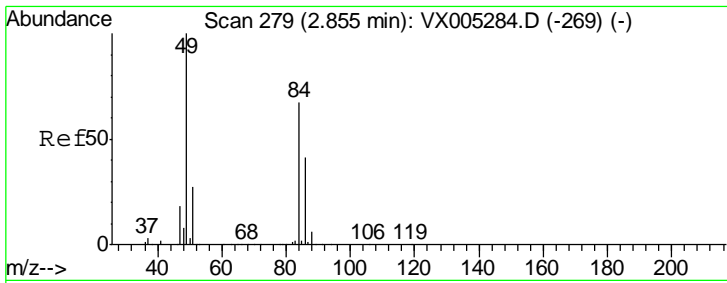
Tgt Ion: 76 Resp: 2677  
 Ion Ratio Lower Upper  
 76 100  
 78 7.6 7.0 10.6



#18  
 Methyl Acetate  
 Concen: 1.05 ug/l  
 RT: 2.78 min Scan# 267  
 Delta R.T. 0.00 min  
 Lab File: VX005289.D  
 Acq: 12 Oct 2018 13:25

Tgt Ion: 43 Resp: 5172  
 Ion Ratio Lower Upper  
 43 100  
 74 23.5 19.4 29.2

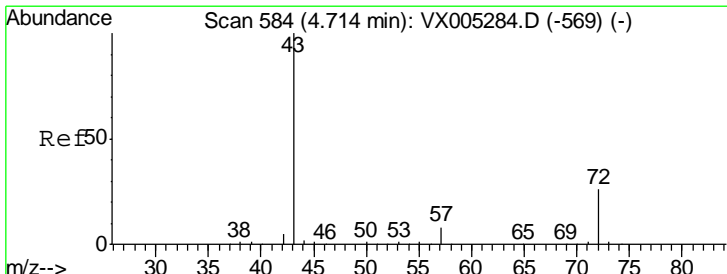
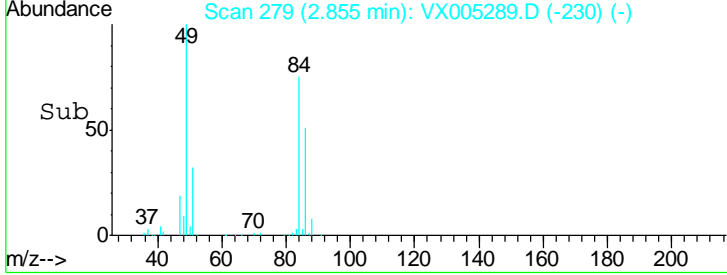
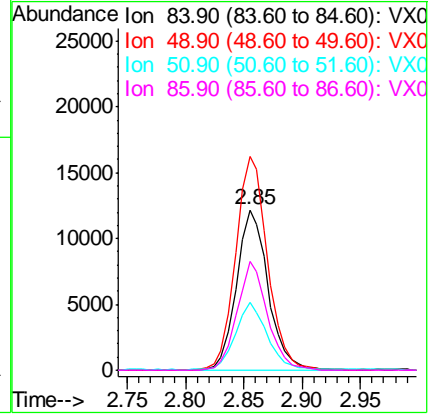
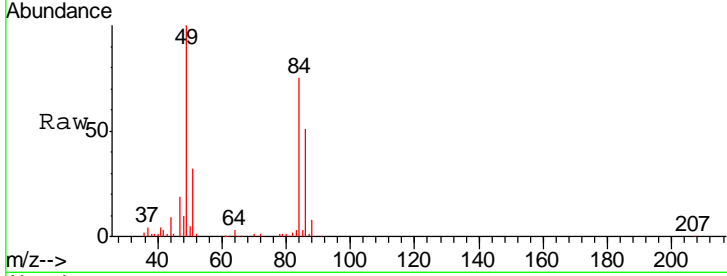




#20  
 Methylene Chloride  
 Concen: 8.08 ug/l  
 RT: 2.85 min Scan# 279  
 Delta R.T. 0.00 min  
 Lab File: VX005289.D  
 Acq: 12 Oct 2018 13:25

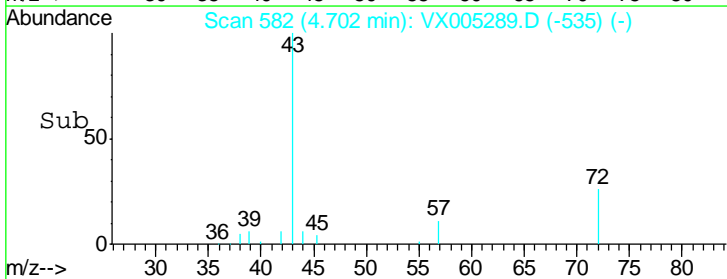
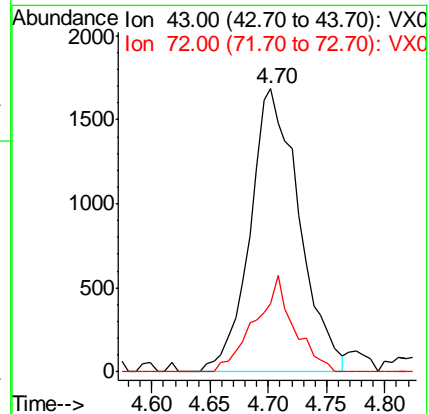
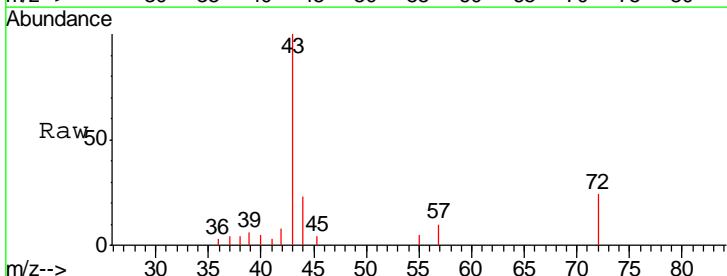
**Instrument :**  
 MSVOA\_X  
**ClientSampled :**  
 RB37708-7211990-45911RT

Tgt Ion	Resp	Lower	Upper
84	100		
49	133.1	101.2	151.8
51	42.1	29.5	44.3
86	68.2	52.3	78.5

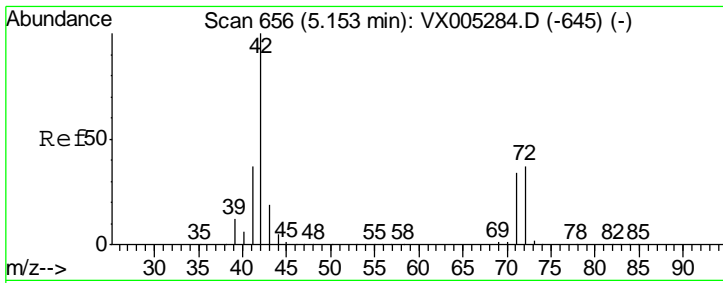


#25  
 2-Butanone  
 Concen: 1.96 ug/l  
 RT: 4.70 min Scan# 582  
 Delta R.T. -0.01 min  
 Lab File: VX005289.D  
 Acq: 12 Oct 2018 13:25

Tgt Ion	Resp	Lower	Upper
43	100		
72	24.2	22.0	33.0



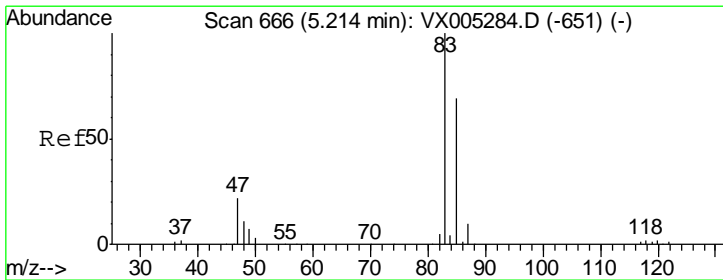
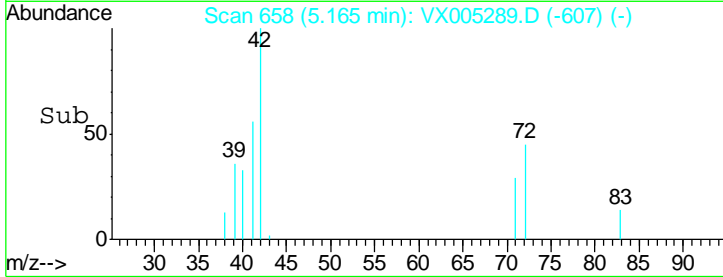
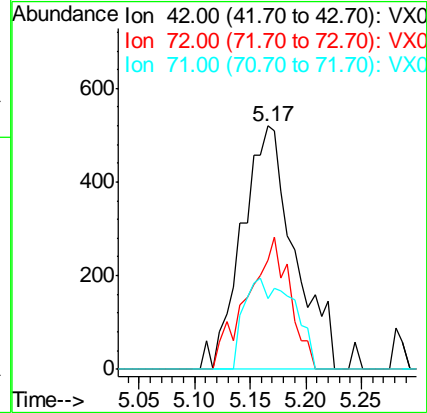
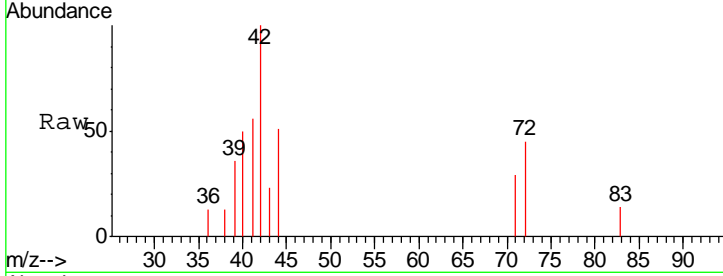




#29  
 Tetrahydrofuran  
 Concen: 1.06 ug/l  
 RT: 5.17 min Scan# 658  
 Delta R.T. 0.01 min  
 Lab File: VX005289.D  
 Acq: 12 Oct 2018 13:25

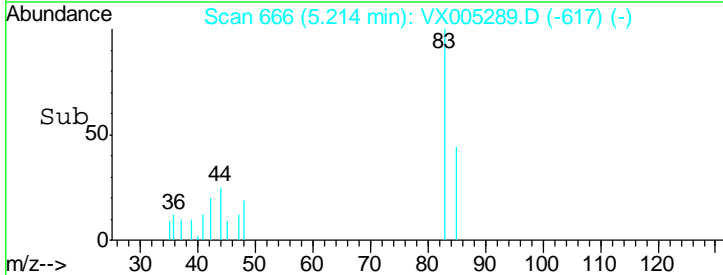
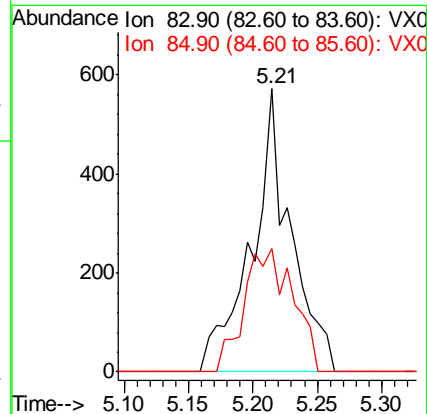
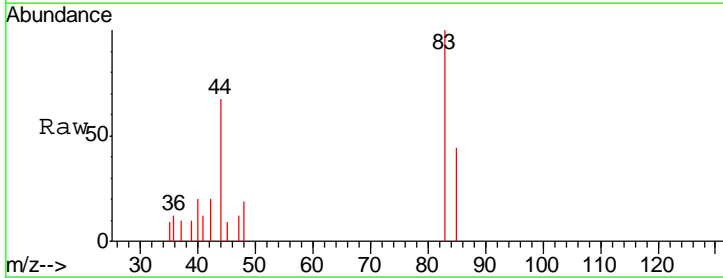
Instrument :  
 MSVOA\_X  
 ClientSampled :  
 RB37708-7211990-45911RT

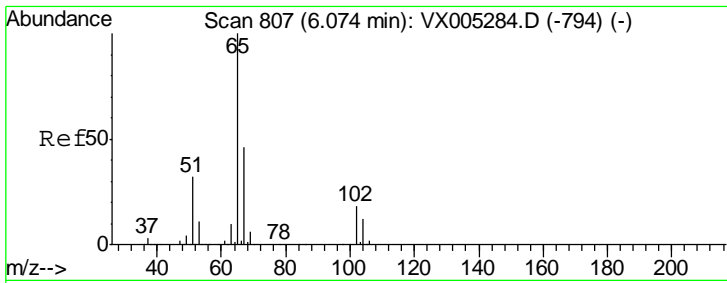
Tgt Ion	Resp	Lower	Upper
42	1704		
72	44.0	37.4	56.0
71	34.9	34.5	51.7



#30  
 Chloroform  
 Concen: 0.26 ug/l  
 RT: 5.21 min Scan# 666  
 Delta R.T. 0.00 min  
 Lab File: VX005289.D  
 Acq: 12 Oct 2018 13:25

Tgt Ion	Resp	Lower	Upper
83	1199		
85	43.5	52.6	79.0#

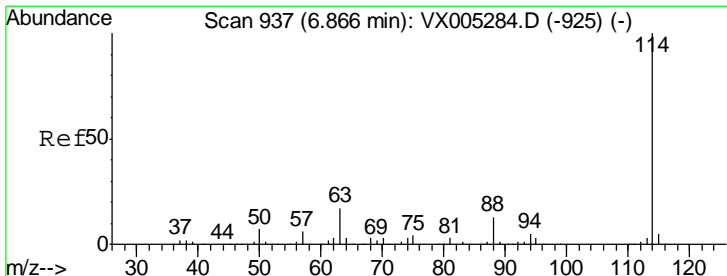
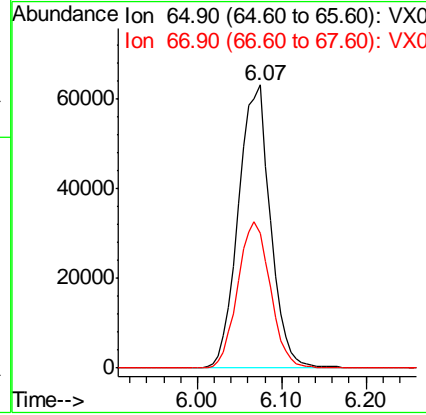
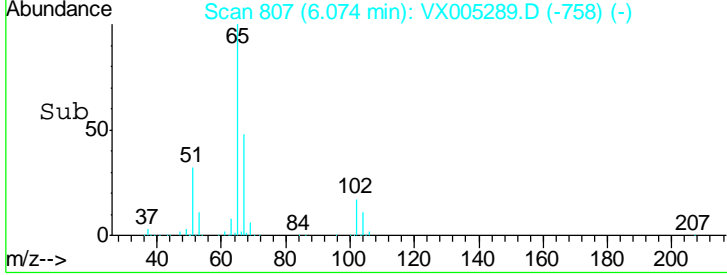
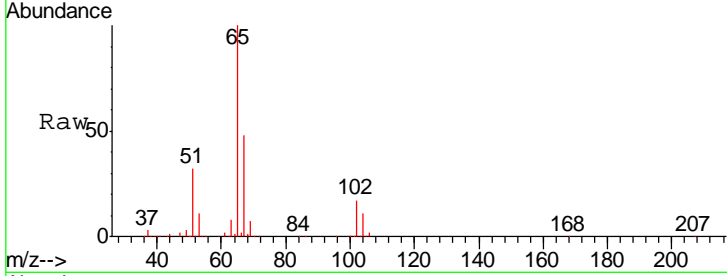




#33  
 1,2-Dichloroethane-d4  
 Concen: 54.27 ug/l  
 RT: 6.07 min Scan# 807  
 Delta R.T. 0.00 min  
 Lab File: VX005289.D  
 Acq: 12 Oct 2018 13:25

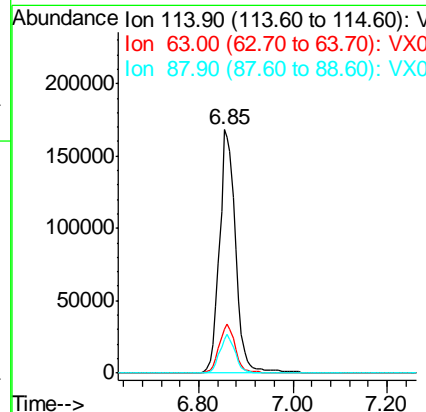
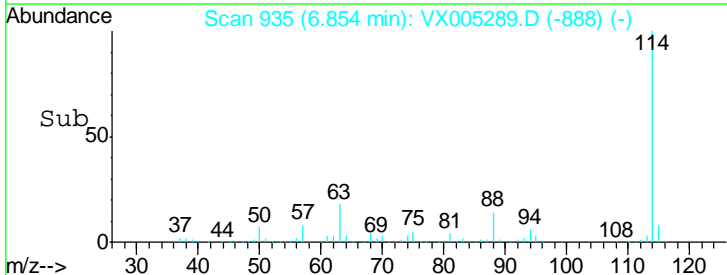
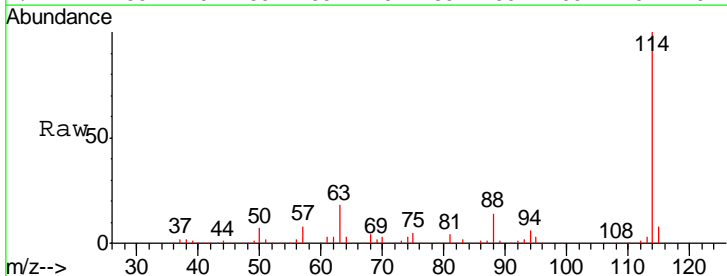
**Instrument :**  
 MSVOA\_X  
**ClientSampled :**  
 RB37708-7211990-45911RT

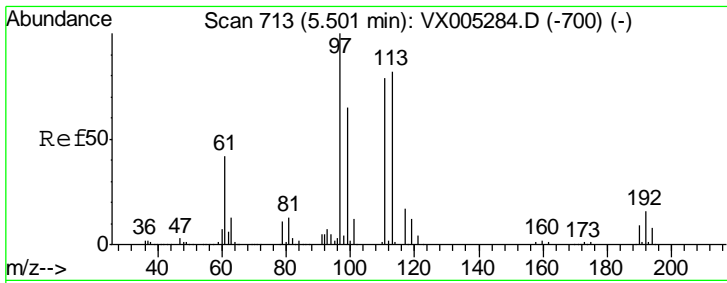
Tgt Ion: 65 Resp: 161777  
 Ion Ratio Lower Upper  
 65 100  
 67 52.8 0.0 106.8



#34  
 1,4-Difluorobenzene  
 Concen: 50.00 ug/l  
 RT: 6.85 min Scan# 935  
 Delta R.T. -0.01 min  
 Lab File: VX005289.D  
 Acq: 12 Oct 2018 13:25

Tgt Ion: 114 Resp: 402896  
 Ion Ratio Lower Upper  
 114 100  
 63 17.9 0.0 39.0  
 88 13.9 0.0 30.4

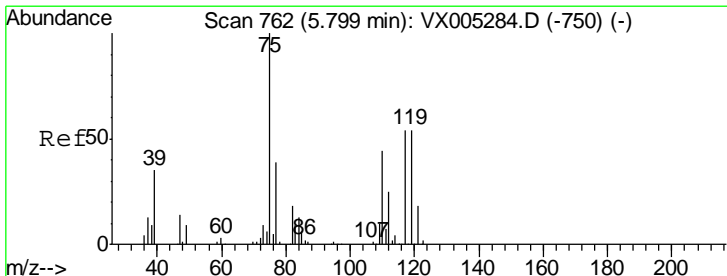
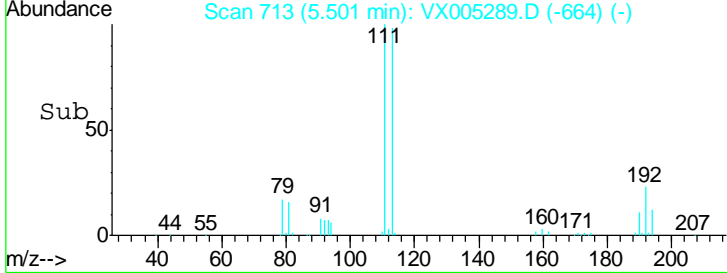
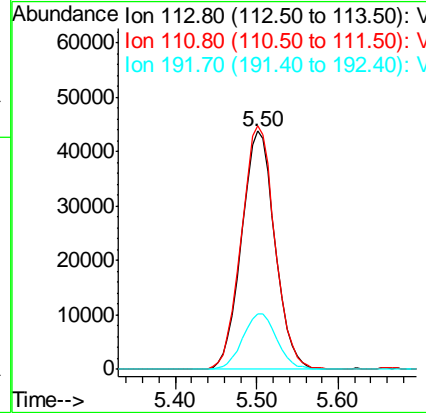
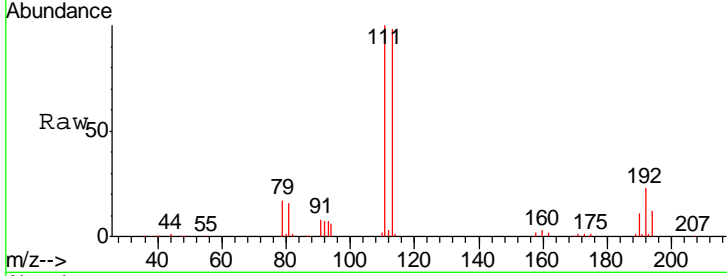




#35  
 Dibromofluoromethane  
 Concen: 46.45 ug/l  
 RT: 5.50 min Scan# 713  
 Delta R.T. 0.00 min  
 Lab File: VX005289.D  
 Acq: 12 Oct 2018 13:25

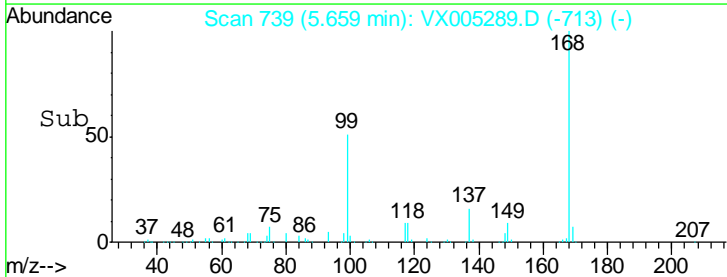
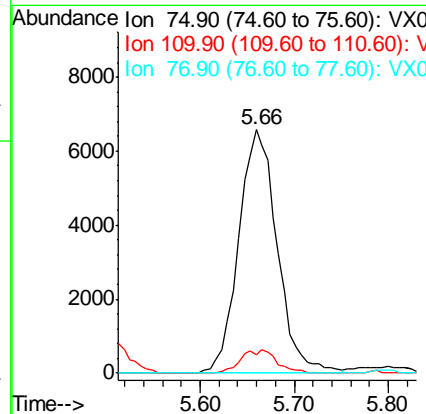
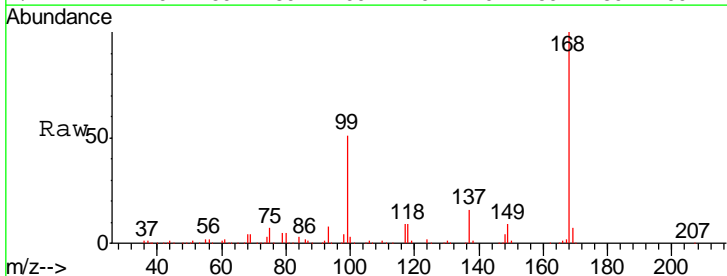
Instrument : MSVOA\_X  
 ClientSampled : RB37708-7211990-45911RT

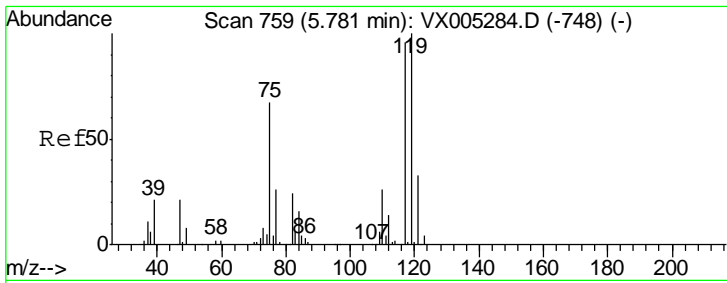
Tgt Ion	Resp	Lower	Upper
113	123939		
111	102.8	82.4	123.6
192	24.0	19.4	29.2



#36  
 1,1-Dichloropropene  
 Concen: 4.81 ug/l  
 RT: 5.66 min Scan# 739  
 Delta R.T. -0.14 min  
 Lab File: VX005289.D  
 Acq: 12 Oct 2018 13:25

Tgt Ion	Resp	Lower	Upper
75	18756		
110	4.4	18.0	54.0#
77	0.0	24.6	36.8#

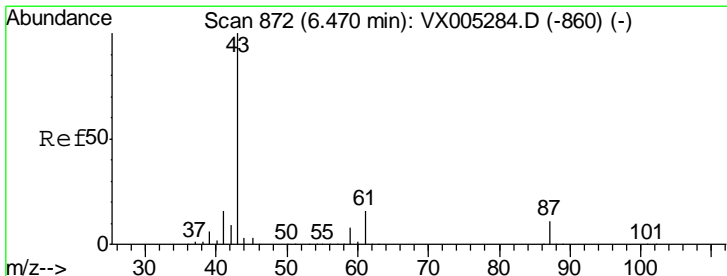
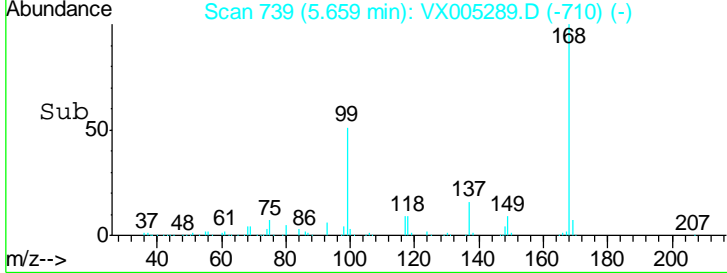
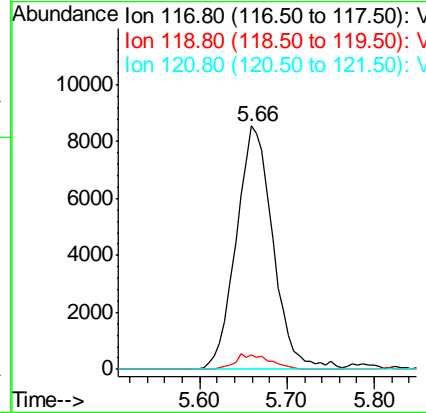
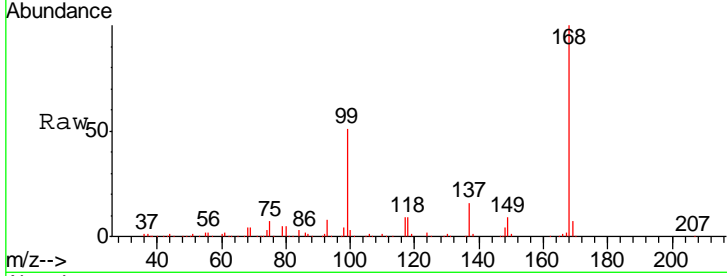




#38  
 Carbon Tetrachloride  
 Concen: 6.36 ug/l  
 RT: 5.66 min Scan# 739  
 Delta R.T. -0.12 min  
 Lab File: VX005289.D  
 Acq: 12 Oct 2018 13:25

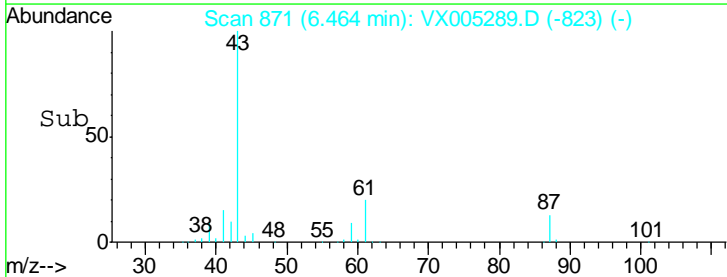
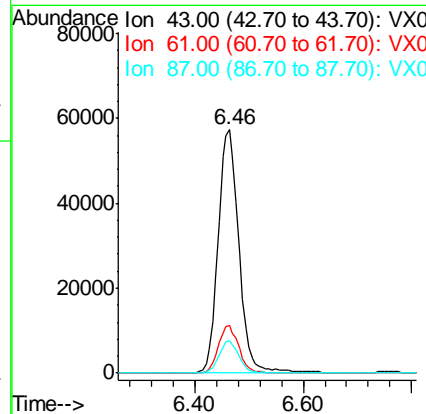
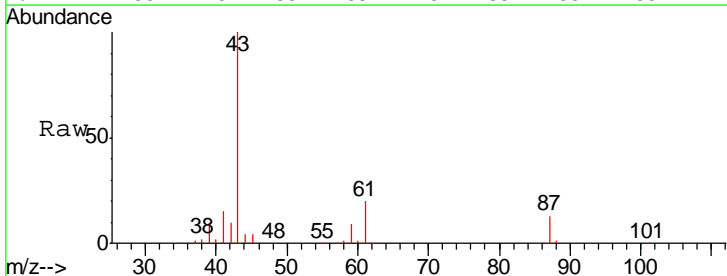
Instrument :  
 MSVOA\_X  
 ClientSampled :  
 RB37708-7211990-45911RT

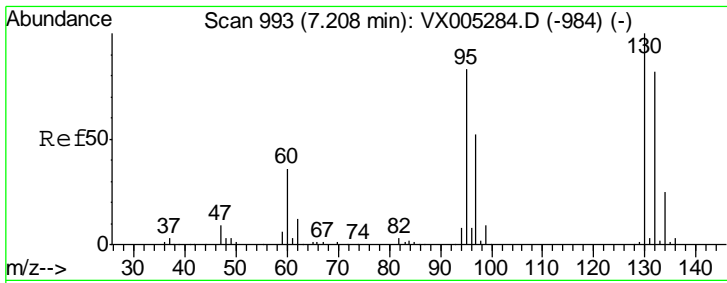
Tgt Ion	Resp	Lower	Upper
117	100		
119	6.0	78.8	118.2#
121	0.0	24.9	37.3#



#43  
 Isopropyl Acetate  
 Concen: 22.79 ug/l  
 RT: 6.46 min Scan# 871  
 Delta R.T. -0.01 min  
 Lab File: VX005289.D  
 Acq: 12 Oct 2018 13:25

Tgt Ion	Resp	Lower	Upper
43	100		
61	19.3	17.0	25.4
87	12.7	11.4	17.2

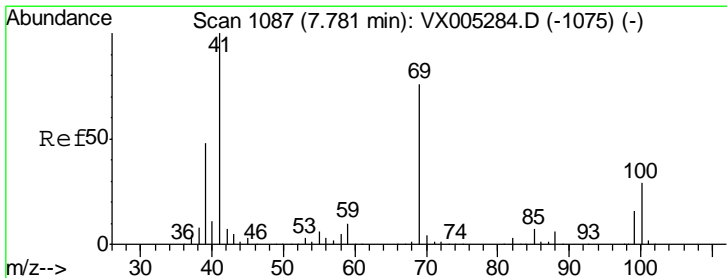
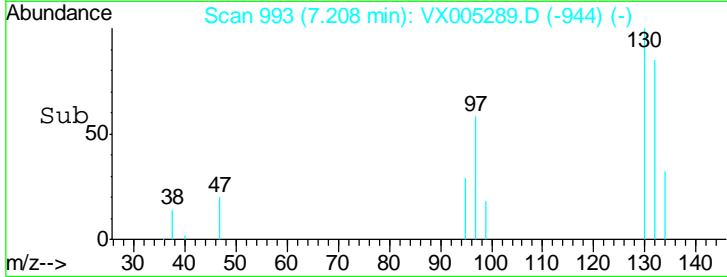
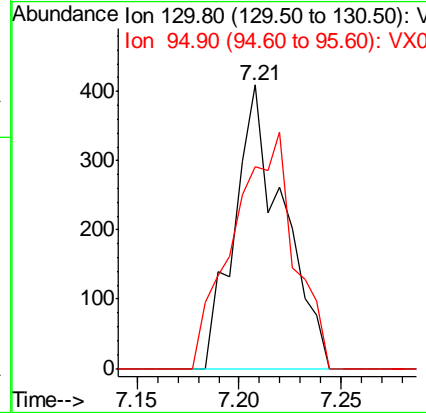
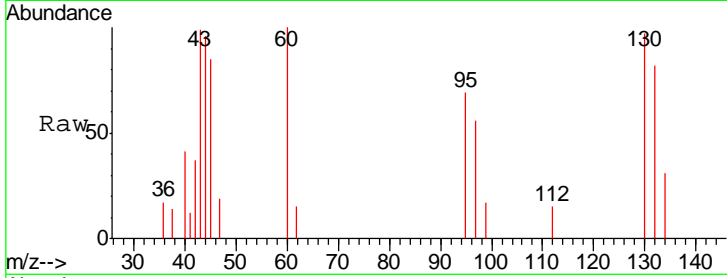




#44  
 Trichloroethene  
 Concen: Below Cal  
 RT: 7.21 min Scan# 993  
 Delta R.T. 0.00 min  
 Lab File: VX005289.D  
 Acq: 12 Oct 2018 13:25

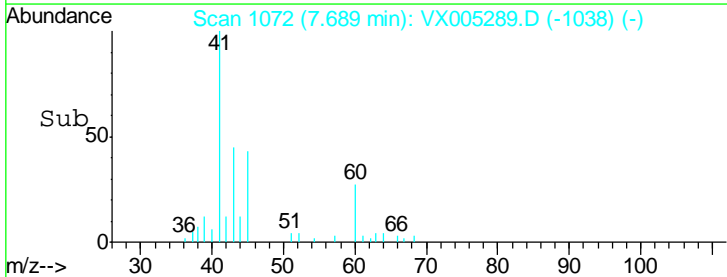
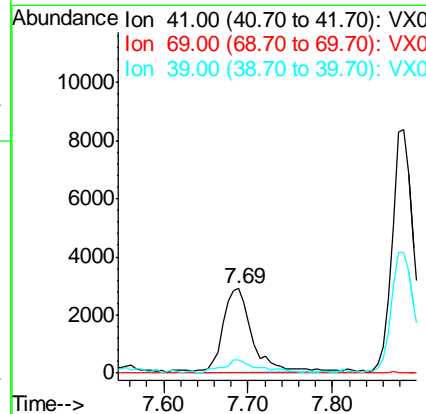
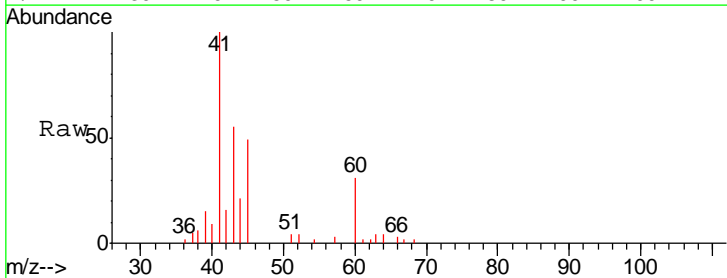
Instrument : MSVOA\_X  
 ClientSampled : RB37708-7211990-45911RT

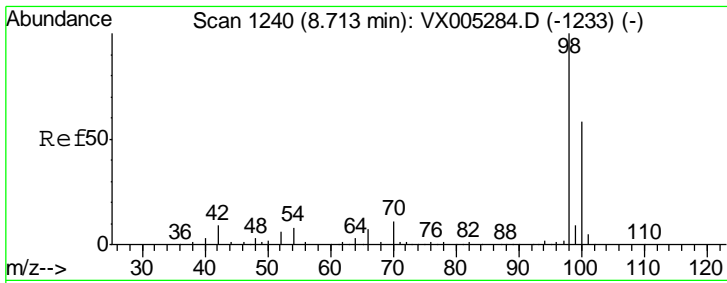
Tgt Ion: 130 Resp: 674  
 Ion Ratio Lower Upper  
 130 100  
 95 71.1 0.0 181.6



#48  
 Methyl methacrylate  
 Concen: 1.97 ug/l  
 RT: 7.69 min Scan# 1072  
 Delta R.T. -0.09 min  
 Lab File: VX005289.D  
 Acq: 12 Oct 2018 13:25

Tgt Ion: 41 Resp: 6826  
 Ion Ratio Lower Upper  
 41 100  
 69 0.0 70.2 105.4#  
 39 20.0 42.7 64.1#

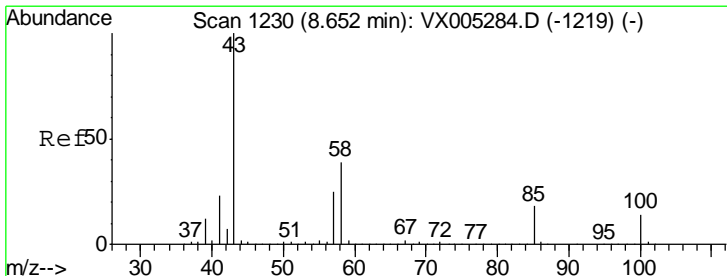
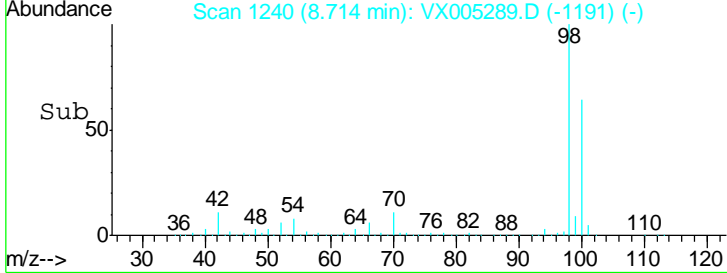
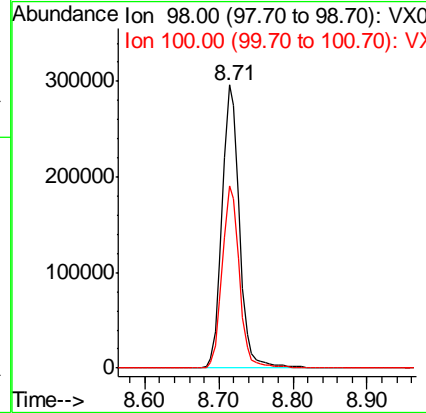
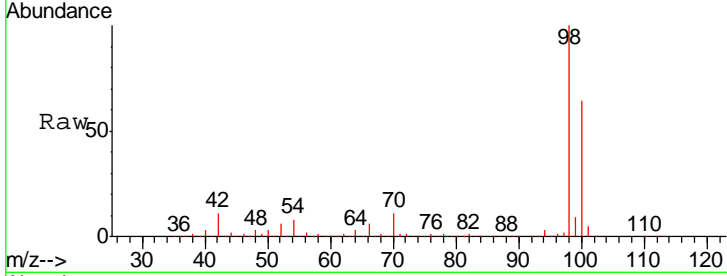




#50  
 Toluene-d8  
 Concen: 52.25 ug/l  
 RT: 8.71 min Scan# 1240  
 Delta R.T. 0.00 min  
 Lab File: VX005289.D  
 Acq: 12 Oct 2018 13:25

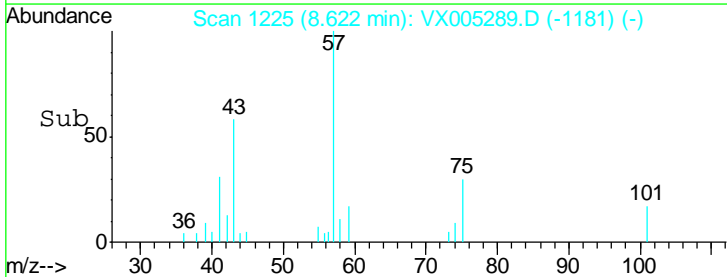
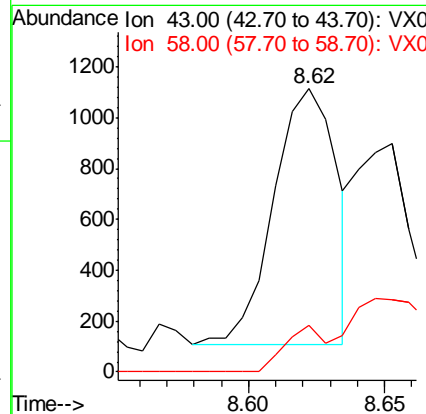
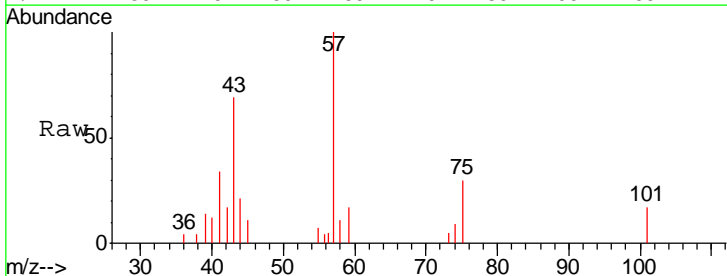
**Instrument :**  
 MSVOA\_X  
**ClientSampled :**  
 RB37708-7211990-45911RT

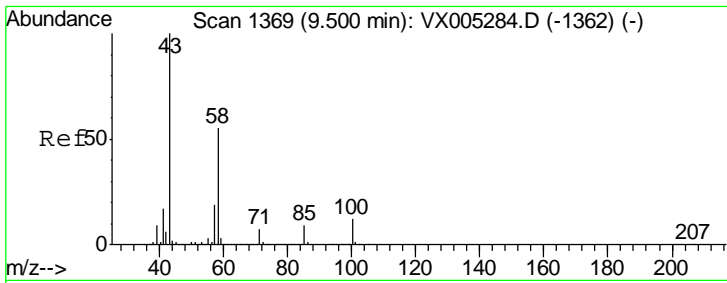
Tgt Ion: 98 Resp: 478641  
 Ion Ratio Lower Upper  
 98 100  
 100 63.9 52.9 79.3



#51  
 4-Methyl-2-Pentanone  
 Concen: 0.35 ug/l  
 RT: 8.62 min Scan# 1225  
 Delta R.T. -0.03 min  
 Lab File: VX005289.D  
 Acq: 12 Oct 2018 13:25

Tgt Ion: 43 Resp: 1626  
 Ion Ratio Lower Upper  
 43 100  
 58 11.3 33.1 49.7#

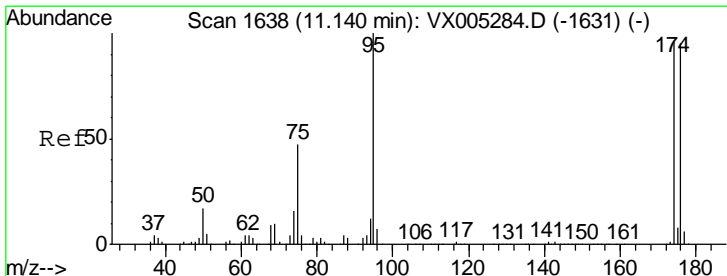
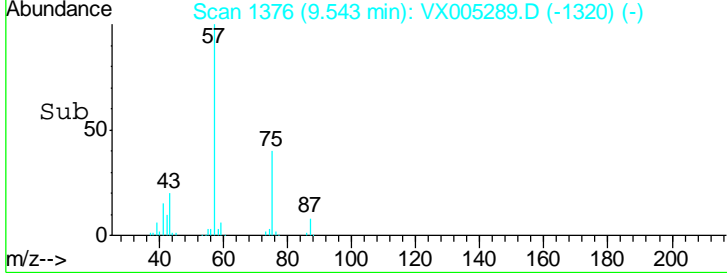
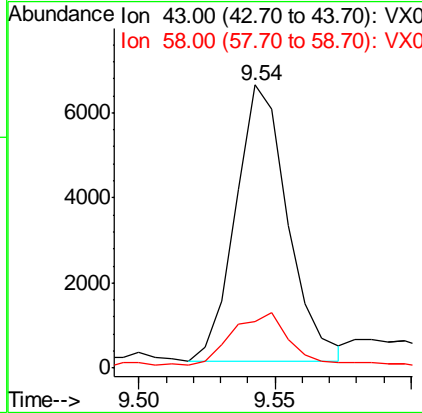
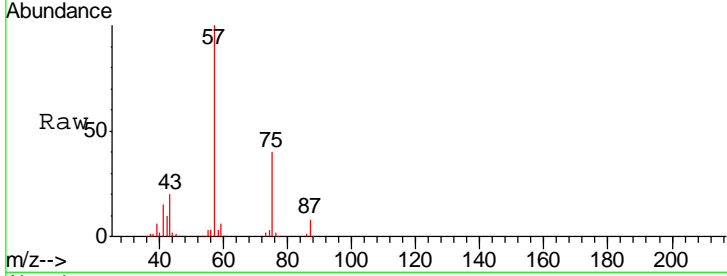




#59  
 2-Hexanone  
 Concen: 2.32 ug/l  
 RT: 9.54 min Scan# 1376  
 Delta R.T. 0.04 min  
 Lab File: VX005289.D  
 Acq: 12 Oct 2018 13:25

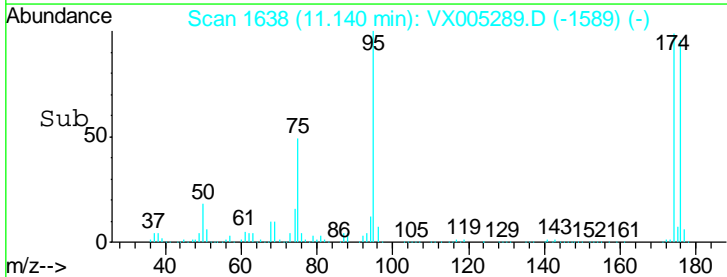
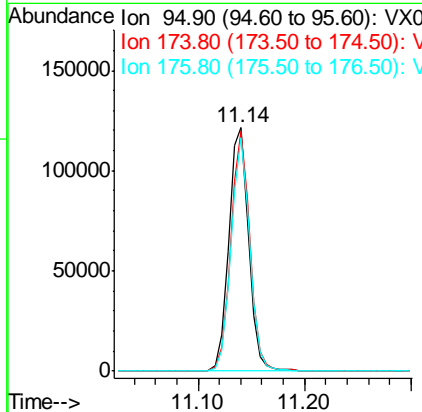
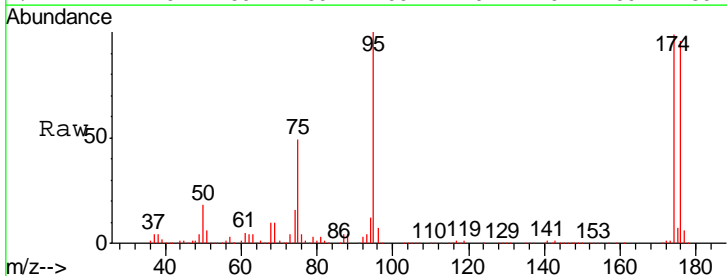
**Instrument :**  
 MSVOA\_X  
**ClientSampled :**  
 RB37708-7211990-45911RT

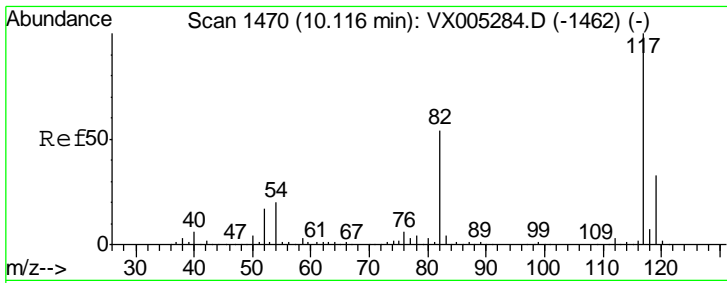
Tgt Ion: 43 Resp: 8651  
 Ion Ratio Lower Upper  
 43 100  
 58 25.4 29.0 87.0#



#62  
 4-Bromofluorobenzene  
 Concen: 46.13 ug/l  
 RT: 11.14 min Scan# 1638  
 Delta R.T. 0.00 min  
 Lab File: VX005289.D  
 Acq: 12 Oct 2018 13:25

Tgt Ion: 95 Resp: 158754  
 Ion Ratio Lower Upper  
 95 100  
 174 94.9 0.0 185.2  
 176 90.9 0.0 178.6

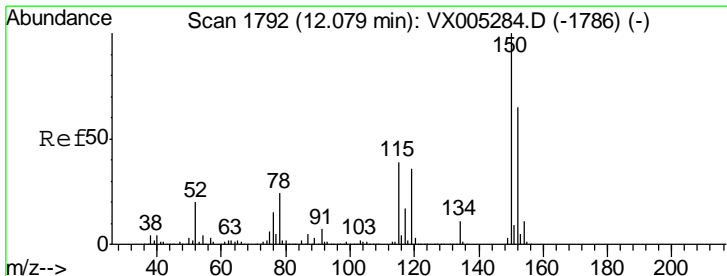
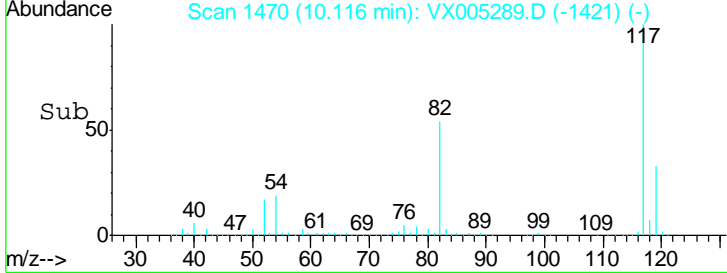
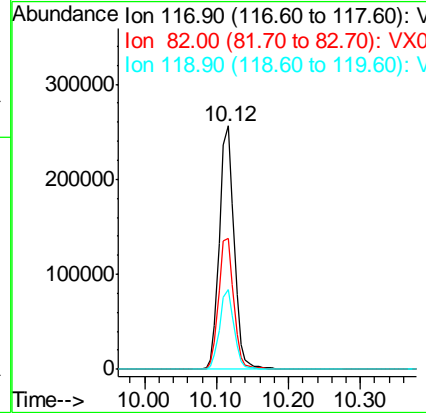
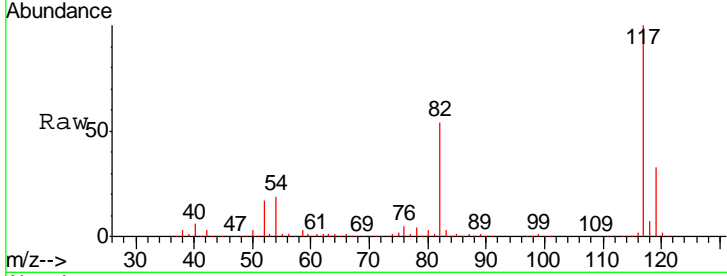




#63  
 Chlorobenzene-d5  
 Concen: 50.00 ug/l  
 RT: 10.12 min Scan# 1470  
 Delta R.T. 0.00 min  
 Lab File: VX005289.D  
 Acq: 12 Oct 2018 13:25

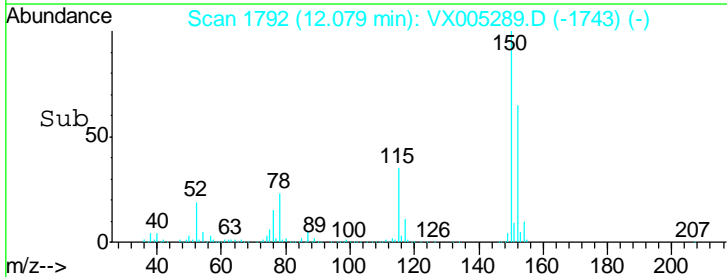
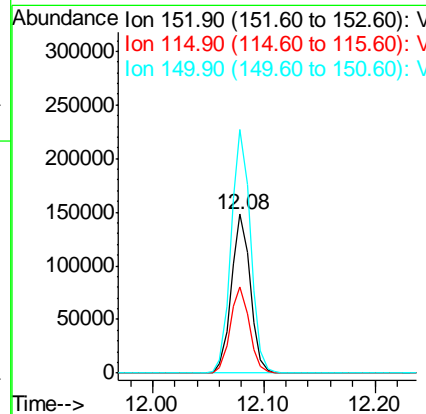
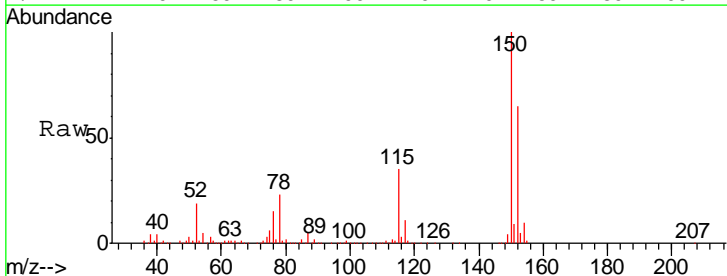
Instrument :  
 MSVOA\_X  
 ClientSampled :  
 RB37708-7211990-45911RT

Tgt Ion	Resp	Lower	Upper
117	364040		
82	53.8	47.8	71.6
119	32.8	29.3	43.9

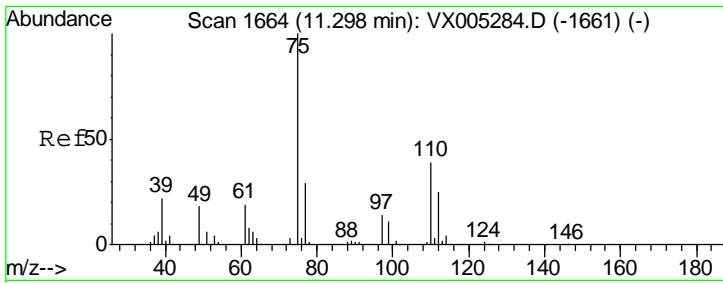


#72  
 1,4-Dichlorobenzene-d4  
 Concen: 50.00 ug/l  
 RT: 12.08 min Scan# 1792  
 Delta R.T. 0.00 min  
 Lab File: VX005289.D  
 Acq: 12 Oct 2018 13:25

Tgt Ion	Resp	Lower	Upper
152	174298		
115	54.7	39.0	117.0
150	157.5	0.0	351.0



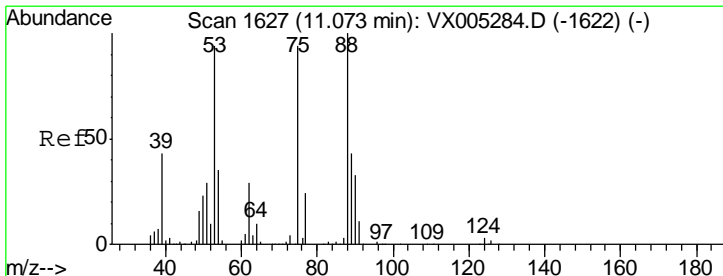
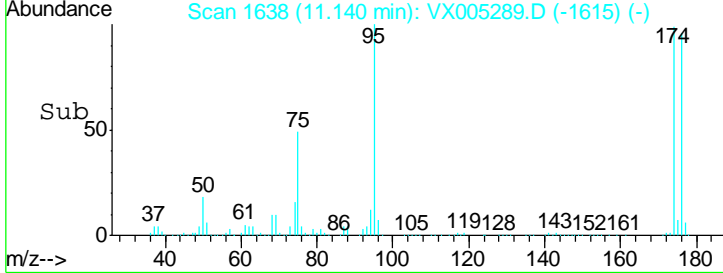
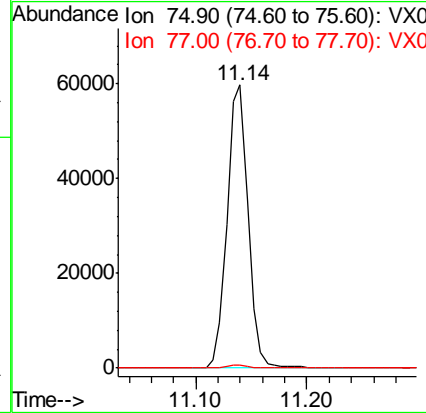
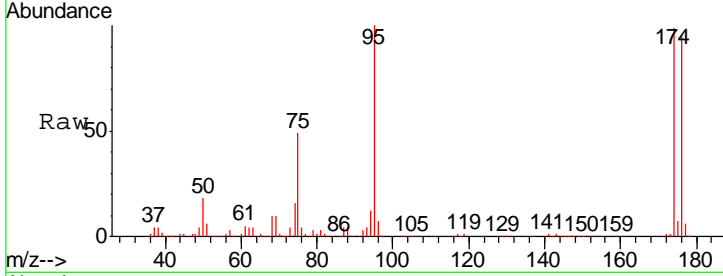




#76  
 1,2,3-Trichloropropane  
 Concen: 23.08 ug/l  
 RT: 11.14 min Scan# 1638  
 Delta R.T. -0.16 min  
 Lab File: VX005289.D  
 Acq: 12 Oct 2018 13:25

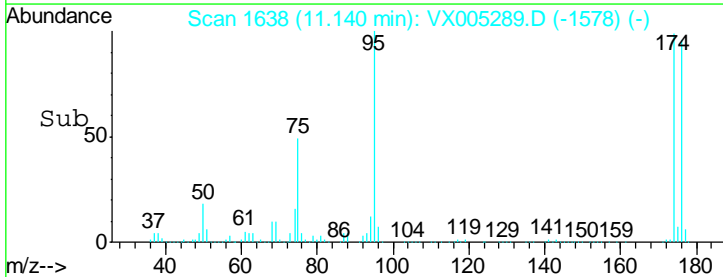
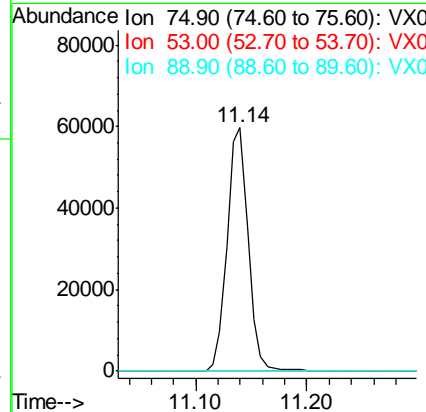
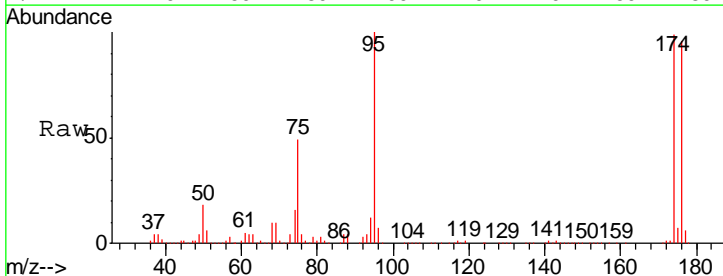
Instrument : MSVOA\_X  
 ClientSampled : RB37708-7211990-45911RT

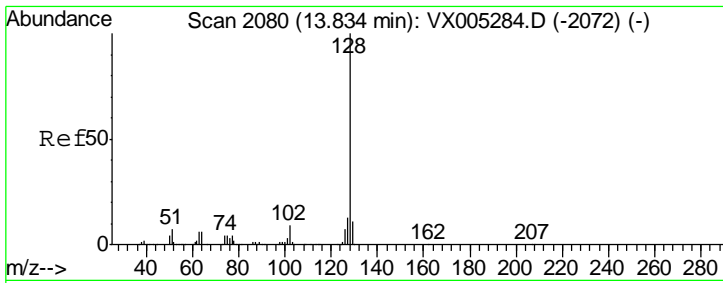
Tgt Ion: 75 Resp: 78038  
 Ion Ratio Lower Upper  
 75 100  
 77 1.3 20.2 60.6#



#81  
 trans-1,4-Dichloro-2-butene  
 Concen: 70.13 ug/l  
 RT: 11.14 min Scan# 1638  
 Delta R.T. 0.07 min  
 Lab File: VX005289.D  
 Acq: 12 Oct 2018 13:25

Tgt Ion: 75 Resp: 78038  
 Ion Ratio Lower Upper  
 75 100  
 53 0.2 80.1 120.1#  
 89 0.0 37.2 55.8#





#95  
 Naphthalene  
 Concen: 3.35 ug/l  
 RT: 13.83 min Scan# 2080  
 Delta R.T. 0.00 min  
 Lab File: VX005289.D  
 Acq: 12 Oct 2018 13:25

Instrument : MSVOA\_X  
 ClientSampled : RB37708-7211990-45911RT

Tgt Ion:128 Resp: 40274

Ion	Ratio	Lower	Upper
128	100		
127	13.3	10.2	15.2
129	10.8	8.6	12.8

