

Data Path : Z:\VOASRV\HPCHEM1\MSVOA_X\DATA\VX101218\
 Data File : VX005301.D
 Acq On : 12 Oct 2018 18:45
 Operator : JC/MD
 Sample : J5458-01
 Misc : 5.0mL/MSVOA_X/WATER
 ALS Vial : 22 Sample Multiplier: 1

Instrument :
 MSVOA_X
 ClientSampleId :
 RAV-RAINEY-BEFORE-10-03-18

Integration Parameters: RTEINT.P

Integrator: RTE
 Smoothing : ON Filtering: 5
 Sampling : 1 Min Area: 3 % of largest Peak
 Start Thrs: 0.2 Max Peaks: 100
 Stop Thrs : 0 Peak Location: TOP

If leading or trailing edge < 100 prefer < Baseline drop else tangent >
 Peak separation: 5

Method : Z:\VOASRV\HPCHEM1\MSVOA_X\METHOD\82X101218W.M
 Title : SW846 8260

Signal : TIC

peak #	R.T. min	first scan	max scan	last scan	PK TY	peak height	corr. area	corr. % max.	% of total
1	1.617	67	76	79	rBV3	7980	16641	1.44%	0.257%
2	2.446	207	212	220	rVB	11534	21257	1.84%	0.328%
3	2.617	235	240	245	rVB	8389	14275	1.23%	0.220%
4	4.763	585	592	603	rVB2	3796	13874	1.20%	0.214%
5	5.501	700	713	725	rBV4	147865	440547	38.08%	6.793%
6	5.659	729	739	760	rBV	269821	765090	66.14%	11.797%
7	6.074	793	807	828	rVB2	174214	467130	40.38%	7.203%
8	6.866	927	937	947	rBV2	390614	902416	78.01%	13.915%
9	8.714	1233	1240	1265	rBV	694363	1156831	100.00%	17.837%
10	10.116	1462	1470	1489	rBV	690997	975845	84.36%	15.047%
11	11.140	1632	1638	1652	rBV	584853	744263	64.34%	11.476%
12	12.079	1787	1792	1801	rVB	777757	938203	81.10%	14.466%
13	12.274	1817	1824	1831	rBV	17029	29054	2.51%	0.448%

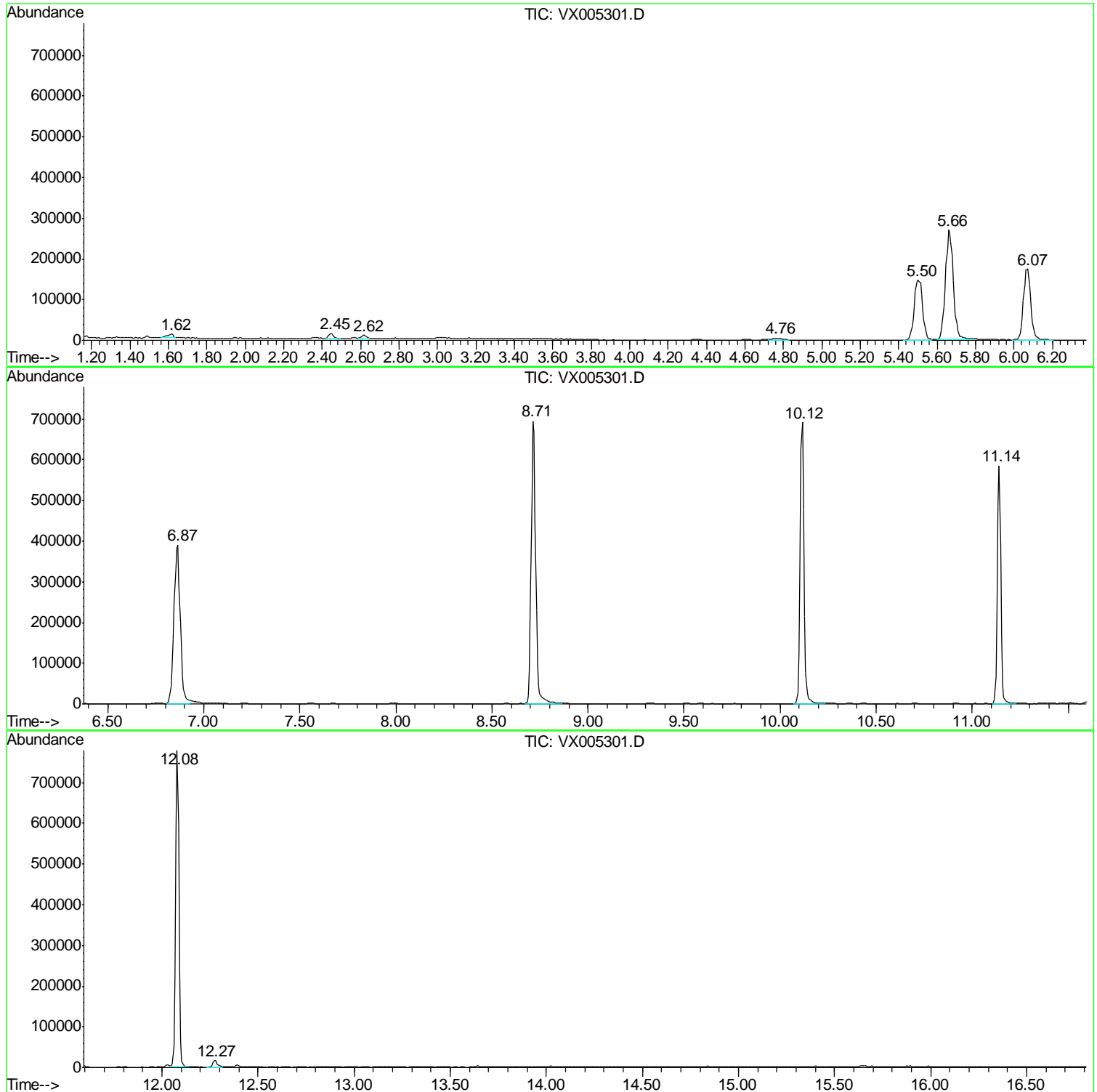
Sum of corrected areas: 6485426

Data Path : Z:\VOASRV\HPCHEM1\MSVOA_X\DATA\VX101218\
Data File : VX005301.D
Acq On : 12 Oct 2018 18:45
Operator : JC/MD
Sample : J5458-01
Misc : 5.0mL/MSVOA_X/WATER
ALS Vial : 22 Sample Multiplier: 1

Instrument :
MSVOA_X
ClientSampled :
RAV-RAINEY-BEFORE-10-03-18

Quant Method : Z:\VOASRV\HPCHEM1\MSVOA_X\METHOD\82X101218W.M
Quant Title : SW846 8260

TIC Library : C:\DATABASE\NIST11.L
TIC Integration Parameters: LSCINT.P



Data Path : Z:\VOASRV\HPCHEM1\MSVOA_X\DATA\VX101218\
Data File : VX005301.D
Acq On : 12 Oct 2018 18:45
Operator : JC/MD
Sample : J5458-01
Misc : 5.0mL/MSVOA_X/WATER
ALS Vial : 22 Sample Multiplier: 1

Instrument :
MSVOA_X
ClientSampled :
RAV-RAINEY-BEFORE-10-03-18

Quant Method : Z:\VOASRV\HPCHEM1\MSVOA_X\METHOD\82X101218W.M
Quant Title : SW846 8260

TIC Library : C:\DATABASE\NIST11.L
TIC Integration Parameters: LSCINT.P

No Library Search Compounds Detected

Data Path : Z:\VOASRV\HPCHEM1\MSVOA_X\DATA\VX101218\
Data File : VX005301.D
Acq On : 12 Oct 2018 18:45
Operator : JC/MD
Sample : J5458-01
Misc : 5.0mL/MSVOA_X/WATER
ALS Vial : 22 Sample Multiplier: 1

Instrument :
MSVOA_X
ClientSampleId :
RAV-RAINEY-BEFORE-10-03-18

Quant Method : Z:\VOASRV\HPCHEM1\MSVOA_X\METHOD\82X101218W.M
Quant Title : SW846 8260

TIC Library : C:\DATABASE\NIST11.L
TIC Integration Parameters: LSCINT.P

TIC Top Hit name	RT	EstConc	Units	Response	--Internal Standard--			
					#	RT	Resp	Conc
