

Data Path : Z:\VOASRV\HPCHEM1\MSVOA X\DATA\VX101320\
 Data File : VX018930.D
 Acq On : 13 Oct 2020 14:27
 Operator : JC/SP
 Sample : L4344-02DL2 200X
 Misc : 5.0mL/MSVOA X/WATER
 ALS Vial : 7 Sample Multiplier: 1

Instrument :
 MSVOA_X
 ClientSampled :
 WASTE-ROOM-SAMPLEDL2

Quant Time: Oct 14 01:53:04 2020
 Quant Method : Z:\VOASRV\HPCHEM1\MSVOA_X\METHOD\82X100920W.M
 Quant Title : SW846 8260
 QLast Update : Sat Oct 10 06:09:09 2020
 Response via : Initial Calibration

| Internal Standards | R.T. | QIon | Response | Conc | Units | Dev(Min) |
|----------------------------|-------|------|----------|-------|-------|----------|
| 1) Pentafluorobenzene | 5.63 | 168 | 258008 | 50.00 | ug/l | 0.00 |
| 34) 1,4-Difluorobenzene | 6.83 | 114 | 397760 | 50.00 | ug/l | 0.00 |
| 63) Chlorobenzene-d5 | 10.10 | 117 | 391514 | 50.00 | ug/l | 0.00 |
| 72) 1,4-Dichlorobenzene-d4 | 12.06 | 152 | 193538 | 50.00 | ug/l | 0.00 |

| System Monitoring Compounds | R.T. | QIon | Response | Conc | Units | Dev(Min) |
|-----------------------------|-------|------|----------|--------|-------|-----------|
| 33) 1,2-Dichloroethane-d4 | 6.03 | 65 | 197409 | 51.88 | ug/l | 0.00 |
| Spiked Amount | | | | 50.000 | | |
| Recovery | | | | | | = 103.76% |
| 35) Dibromofluoromethane | 5.46 | 113 | 151202 | 53.34 | ug/l | 0.00 |
| Spiked Amount | | | | 50.000 | | |
| Recovery | | | | | | = 106.68% |
| 50) Toluene-d8 | 8.70 | 98 | 512195 | 52.09 | ug/l | 0.00 |
| Spiked Amount | | | | 50.000 | | |
| Recovery | | | | | | = 104.18% |
| 62) 4-Bromofluorobenzene | 11.12 | 95 | 177186 | 45.21 | ug/l | 0.00 |
| Spiked Amount | | | | 50.000 | | |
| Recovery | | | | | | = 90.42% |

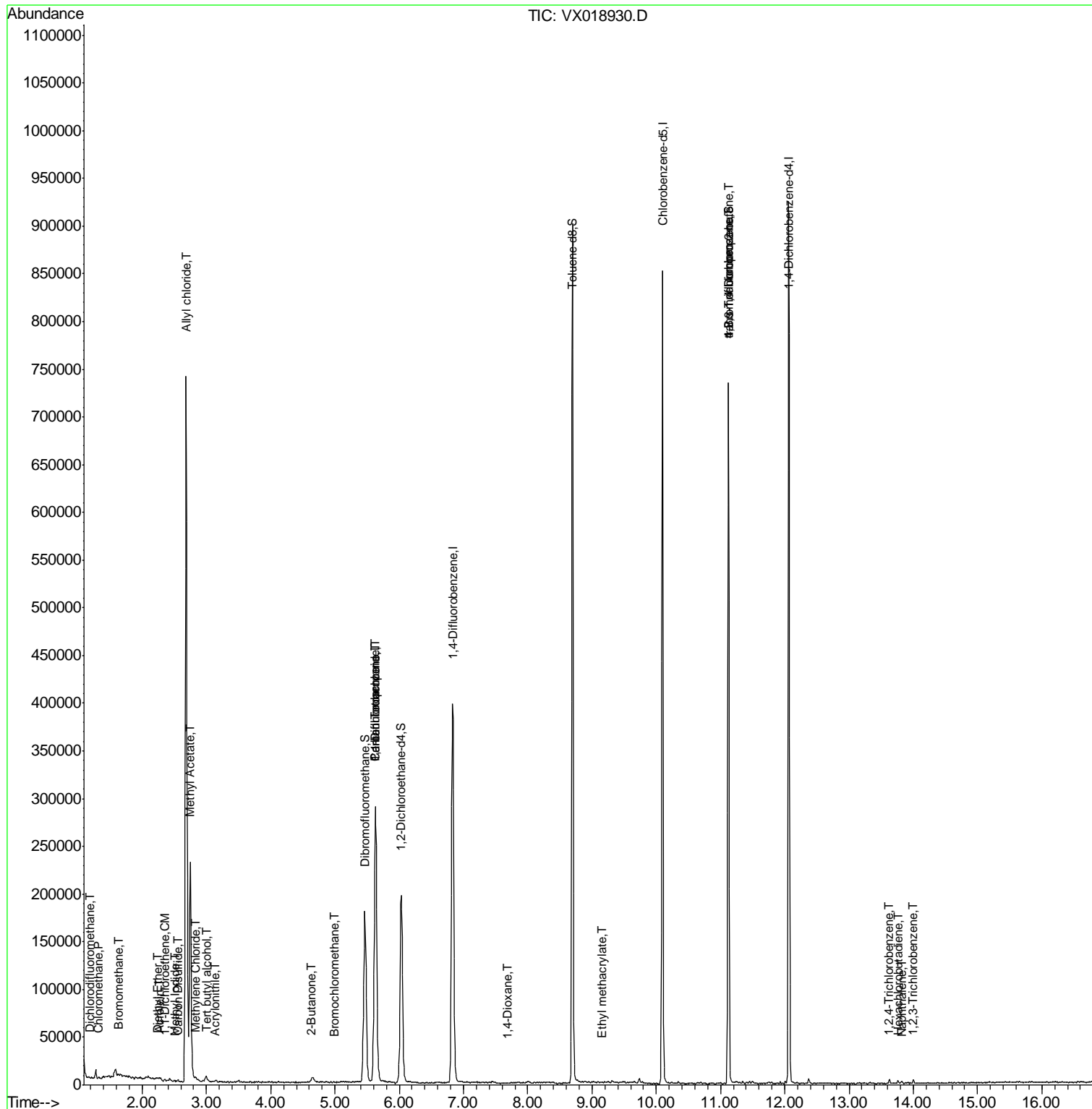
| Target Compounds | R.T. | QIon | Response | Conc | Units | Qvalue |
|--------------------------------|-------|------|----------|-----------|--------|--------|
| 2) Dichlorodifluoromethane | 1.18 | 85 | 86 | 1.646 | ug/l # | 1 |
| 3) Chloromethane | 1.31 | 50 | 630 | 0.261 | ug/l # | 35 |
| 5) Bromomethane | 1.64 | 94 | 1006 | 0.668 | ug/l # | 35 |
| 8) Diethyl Ether | 2.23 | 74 | 187 | 1.153 | ug/l | 81 |
| 10) Methyl Iodide | 2.50 | 142 | 1152 | 4.385 | ug/l # | 90 |
| 11) Tert butyl alcohol | 3.00 | 59 | 3324 | 5.546 | ug/l # | 76 |
| 12) 1,1-Dichloroethene | 2.36 | 96 | 311 | 0.834 | ug/l # | 41 |
| 13) Acrolein | 2.26 | 56 | 277 | 0.555 | ug/l | 96 |
| 14) Allyl chloride | 2.68 | 41 | 771574 | 178.598 | ug/l # | 39 |
| 15) Acrylonitrile | 3.13 | 53 | 995 | 0.783 | ug/l # | 17 |
| 16) Acetone | 2.42 | 43 | 2431 | Below Cal | # | 83 |
| 17) Carbon Disulfide | 2.56 | 76 | 1978 | 0.283 | ug/l # | 62 |
| 18) Methyl Acetate | 2.75 | 43 | 265698 | 83.994 | ug/l | 97 |
| 20) Methylene Chloride | 2.84 | 84 | 1093 | 0.902 | ug/l # | 76 |
| 25) 2-Butanone | 4.62 | 43 | 492 | 0.239 | ug/l # | 50 |
| 28) Bromochloromethane | 4.99 | 49 | 334 | 1.663 | ug/l # | 8 |
| 36) 1,1-Dichloropropene | 5.63 | 75 | 20664 | 4.941 | ug/l # | 52 |
| 38) Carbon Tetrachloride | 5.63 | 117 | 27688 | 5.342 | ug/l # | 18 |
| 49) 1,4-Dioxane | 7.69 | 88 | 22 | 0.461 | ug/l # | 1 |
| 56) Ethyl methacrylate | 9.16 | 69 | 83 | 2.952 | ug/l # | 23 |
| 64) Tetrachloroethene | 9.31 | 164 | 222 | Below Cal | # | 72 |
| 76) 1,2,3-Trichloropropane | 11.12 | 75 | 91509 | 21.944 | ug/l # | 37 |
| 81) trans-1,4-Dichloro-2-buten | 11.12 | 75 | 91509 | 62.188 | ug/l # | 7 |
| 93) 1,2,4-Trichlorobenzene | 13.63 | 180 | 824 | 0.211 | ug/l | 91 |
| 94) Hexachlorobutadiene | 13.76 | 225 | 660 | 0.381 | ug/l | 75 |
| 95) Naphthalene | 13.82 | 128 | 1681 | 3.198 | ug/l # | 92 |
| 96) 1,2,3-Trichlorobenzene | 14.00 | 180 | 776 | 0.203 | ug/l | 88 |

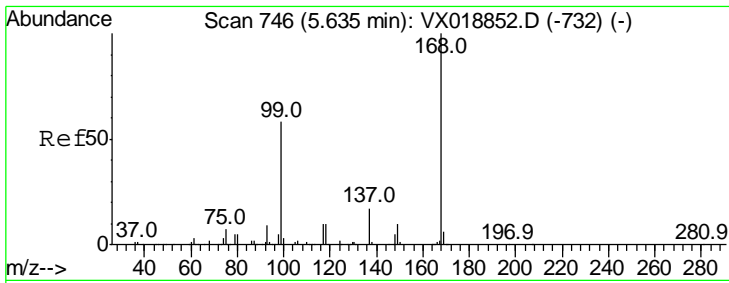
(#) = qualifier out of range (m) = manual integration (+) = signals summed

Data Path : Z:\VOASRV\HPCHEM1\MSVOA X\DATA\VX101320\
 Data File : VX018930.D
 Acq On : 13 Oct 2020 14:27
 Operator : JC/SP
 Sample : L4344-02DL2 200X
 Misc : 5.0mL/MSVOA X/WATER
 ALS Vial : 7 Sample Multiplier: 1

Instrument :
 MSVOA_X
 Client Sampled :
 WASTE-ROOM-SAMPLEDL2

Quant Time: Oct 14 01:53:04 2020
 Quant Method : Z:\VOASRV\HPCHEM1\MSVOA_X\METHOD\82X100920W.M
 Quant Title : SW846 8260
 QLast Update : Sat Oct 10 06:09:09 2020
 Response via : Initial Calibration

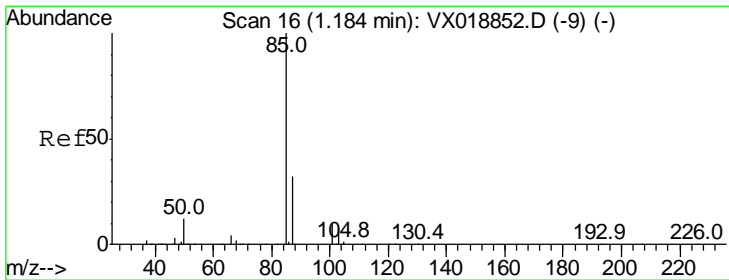
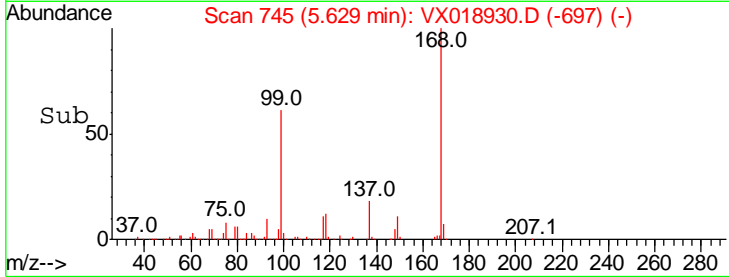
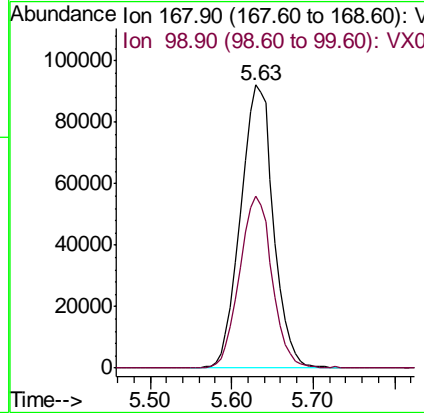
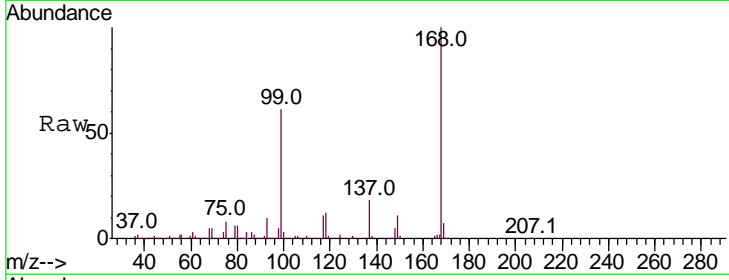




#1
 Pentafluorobenzene
 Concen: 50.000 ug/l
 RT: 5.63 min Scan# 745
 Delta R.T. -0.01 min
 Lab File: VX018930.D
 Acq: 13 Oct 2020 14:27

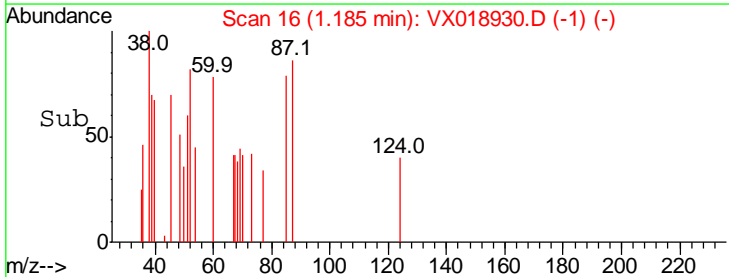
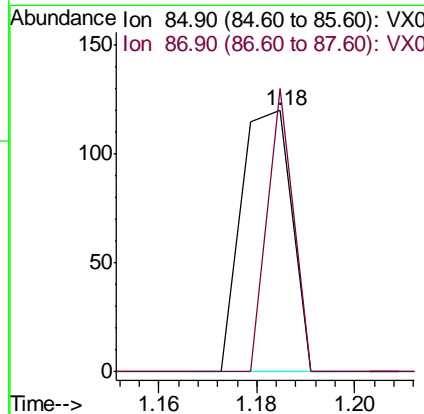
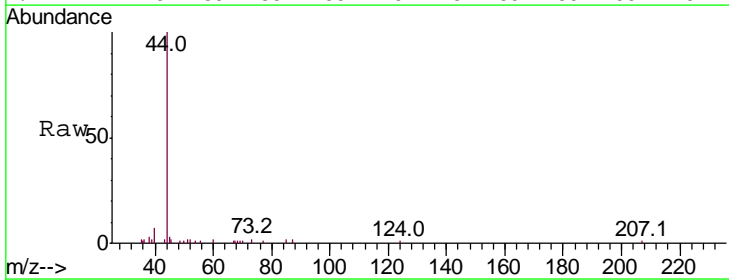
Instrument :
 MSVOA_X
 ClientSampled :
 WASTE-ROOM-SAMPLEDL2

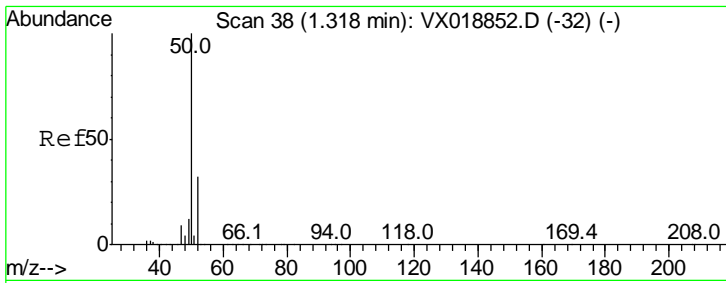
| Tgt Ion | Resp | Lower | Upper |
|---------|------|-------|-------|
| 168 | 100 | | |
| 99 | 60.6 | 46.1 | 69.1 |



#2
 Dichlorodifluoromethane
 Concen: 1.646 ug/l
 RT: 1.18 min Scan# 16
 Delta R.T. 0.00 min
 Lab File: VX018930.D
 Acq: 13 Oct 2020 14:27

| Tgt Ion | Resp | Lower | Upper |
|---------|-------|-------|-------|
| 85 | 100 | | |
| 87 | 108.3 | 15.9 | 47.7# |

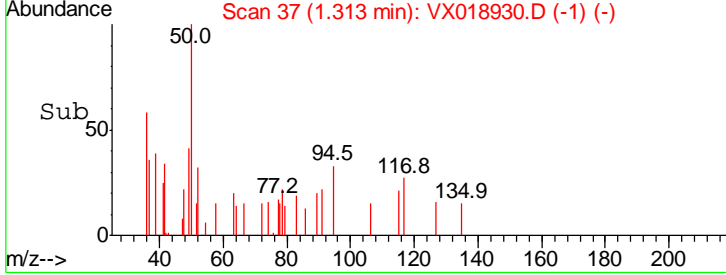
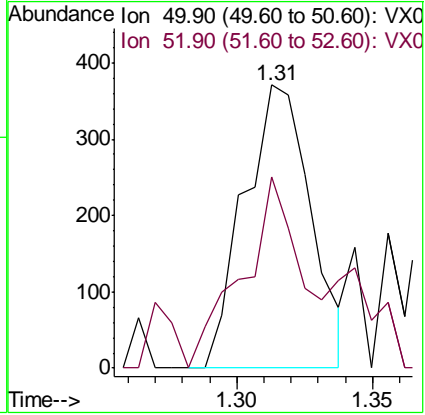
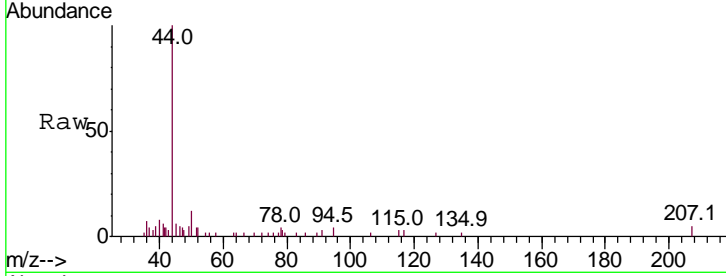




#3
 Chloromethane
 Concen: 0.261 ug/l
 RT: 1.31 min Scan# 37
 Delta R.T. -0.01 min
 Lab File: VX018930.D
 Acq: 13 Oct 2020 14:27

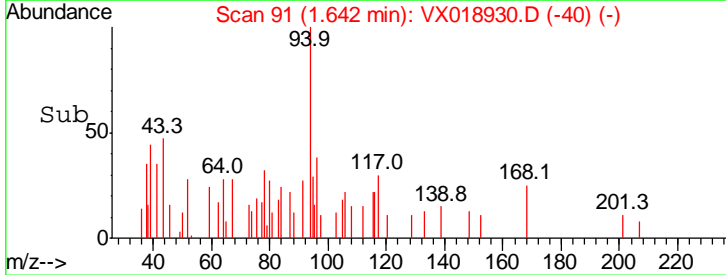
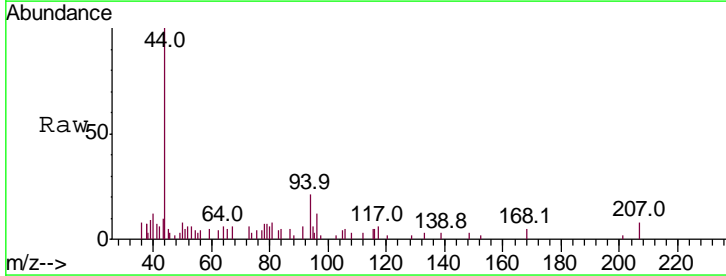
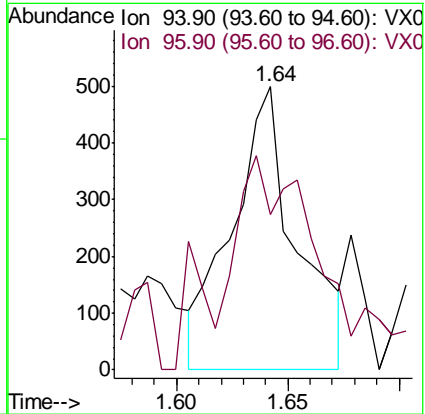
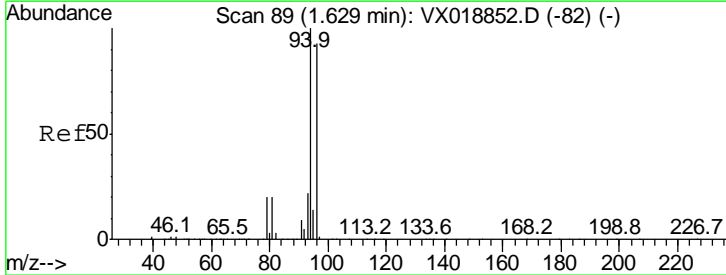
Instrument :
 MSVOA_X
ClientSampled :
 WASTE-ROOM-SAMPLEDL2

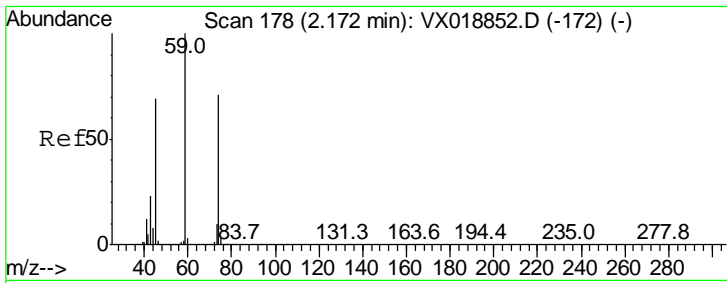
| Tgt Ion | Resp | Lower | Upper |
|---------|------|-------|-------|
| 50 | 100 | | |
| 52 | 67.7 | 25.2 | 37.8# |



#5
 Bromomethane
 Concen: 0.668 ug/l
 RT: 1.64 min Scan# 91
 Delta R.T. 0.01 min
 Lab File: VX018930.D
 Acq: 13 Oct 2020 14:27

| Tgt Ion | Resp | Lower | Upper |
|---------|------|-------|--------|
| 94 | 100 | | |
| 96 | 30.9 | 74.5 | 111.7# |

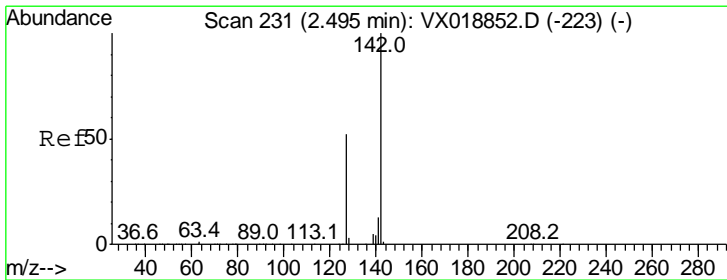
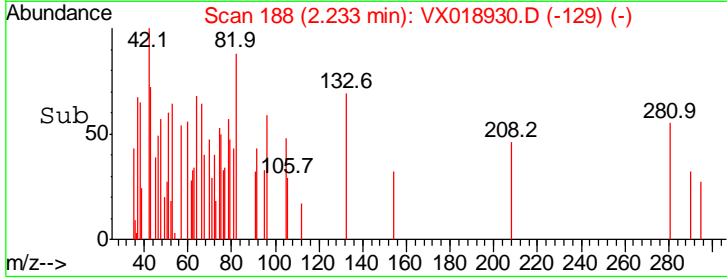
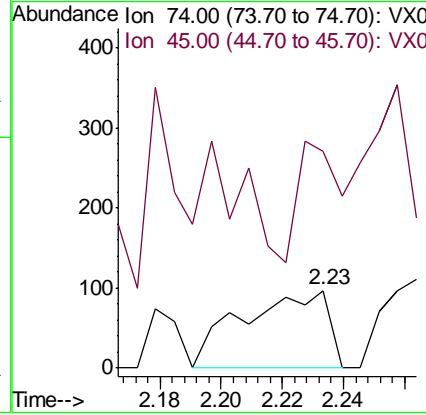
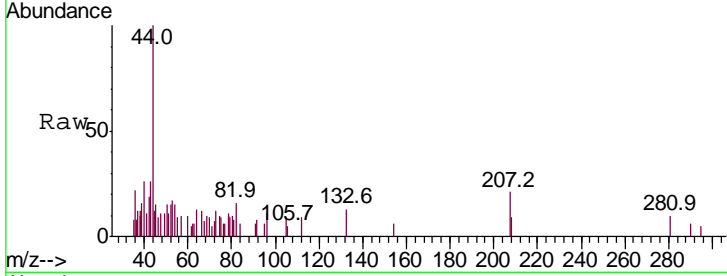




#8
 Diethyl Ether
 Concen: 1.153 ug/l
 RT: 2.23 min Scan# 188
 Delta R.T. 0.06 min
 Lab File: VX018930.D
 Acq: 13 Oct 2020 14:27

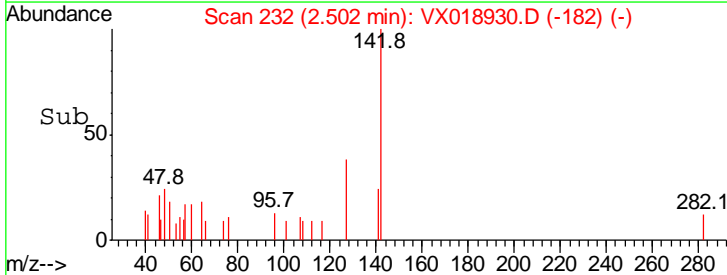
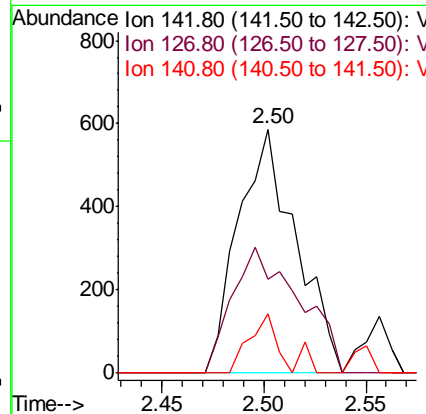
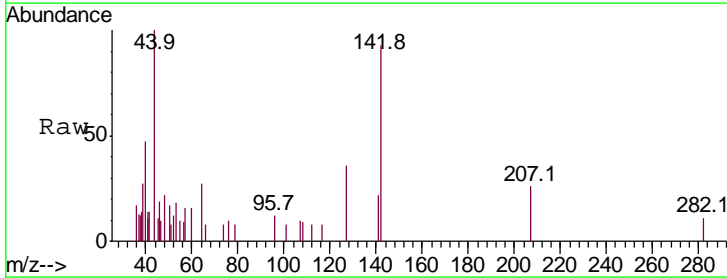
Instrument :
 MSVOA_X
 ClientSampled :
 WASTE-ROOM-SAMPLEDL2

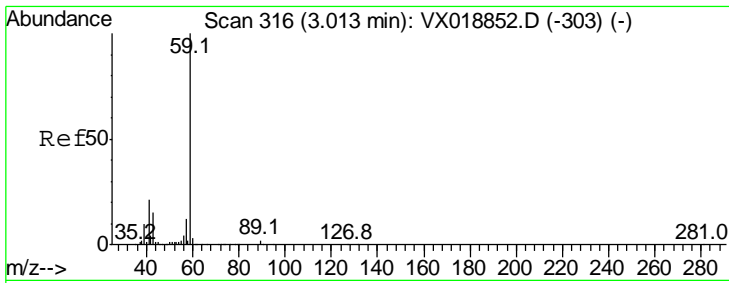
Tgt Ion: 74 Resp: 187
 Ion Ratio Lower Upper
 74 100
 45 75.9 47.0 141.2



#10
 Methyl Iodide
 Concen: 4.385 ug/l
 RT: 2.50 min Scan# 232
 Delta R.T. 0.01 min
 Lab File: VX018930.D
 Acq: 13 Oct 2020 14:27

Tgt Ion: 142 Resp: 1152
 Ion Ratio Lower Upper
 142 100
 127 60.0 42.0 63.0
 141 11.2 11.8 17.6#

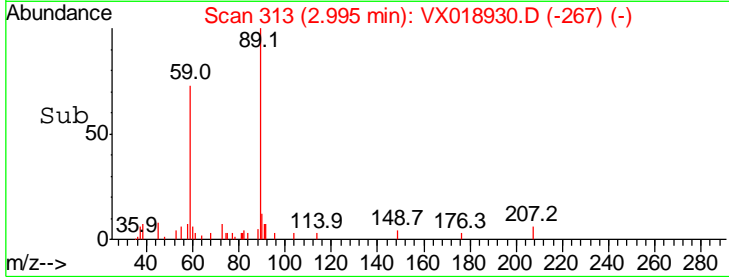
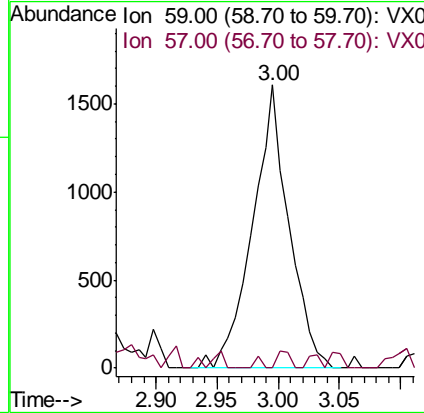
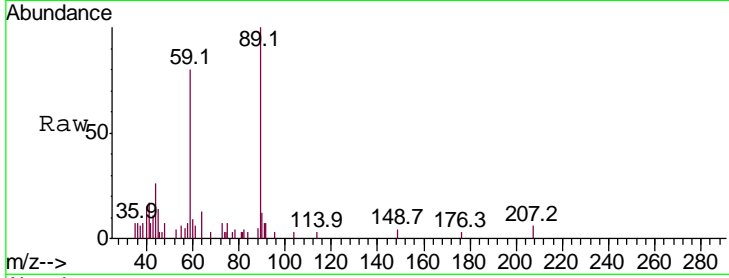




#11
 Tert butyl alcohol
 Concen: 5.546 ug/l
 RT: 3.00 min Scan# 313
 Delta R.T. -0.02 min
 Lab File: VX018930.D
 Acq: 13 Oct 2020 14:27

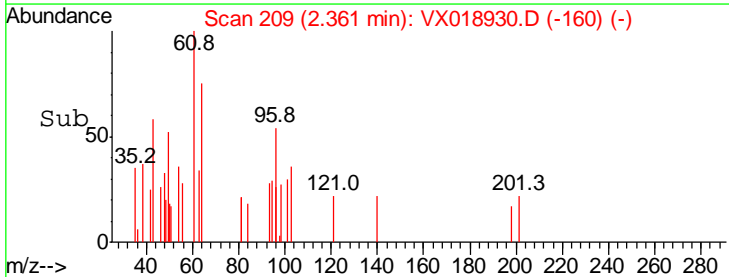
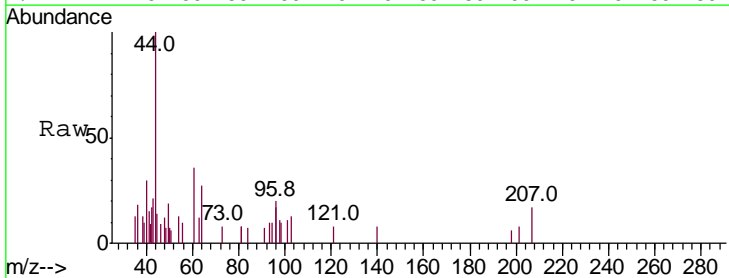
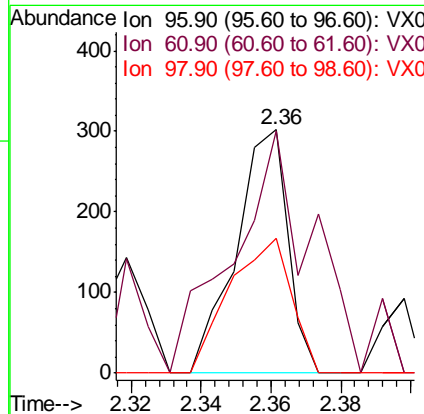
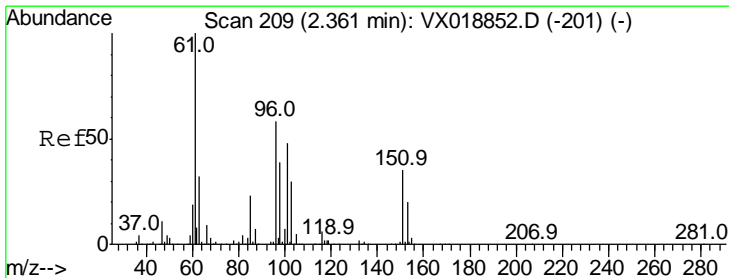
Instrument :
 MSVOA_X
 ClientSampled :
 WASTE-ROOM-SAMPLEDL2

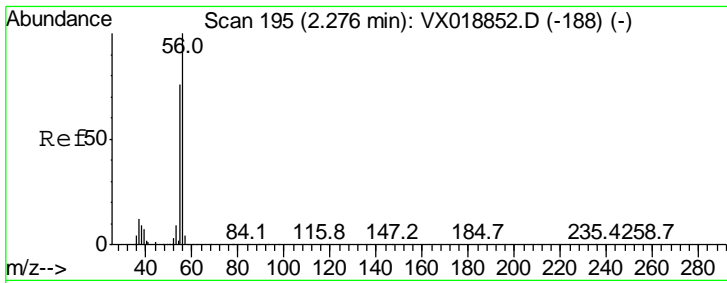
| Tgt Ion | Resp | Lower | Upper |
|---------|------|-------|-------|
| 59 | 100 | | |
| 57 | 2.0 | 9.0 | 13.6# |



#12
 1,1-Dichloroethene
 Concen: 0.834 ug/l
 RT: 2.36 min Scan# 209
 Delta R.T. 0.00 min
 Lab File: VX018930.D
 Acq: 13 Oct 2020 14:27

| Tgt Ion | Resp | Lower | Upper |
|---------|------|-------|--------|
| 96 | 100 | | |
| 61 | 65.6 | 137.0 | 205.6# |
| 98 | 55.3 | 53.9 | 80.9 |

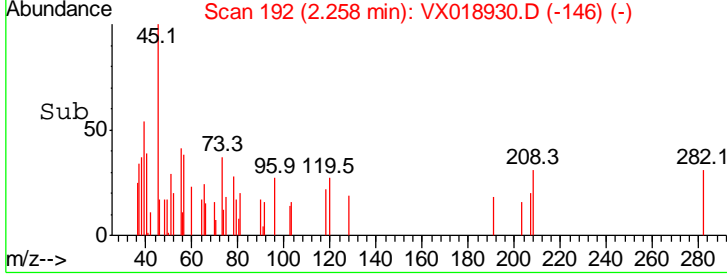
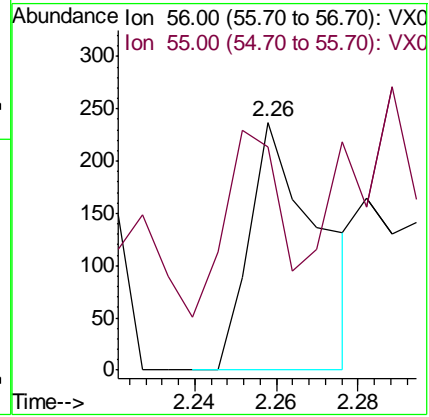
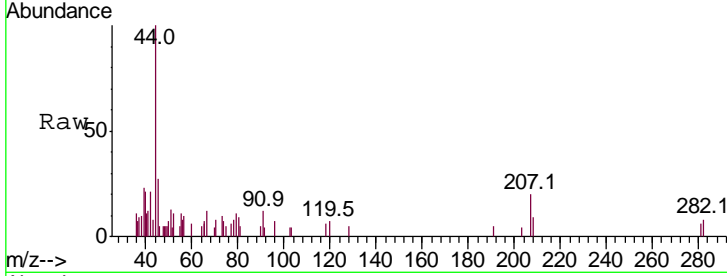




#13
 Acrolein
 Concen: 0.555 ug/l
 RT: 2.26 min Scan# 192
 Delta R.T. -0.02 min
 Lab File: VX018930.D
 Acq: 13 Oct 2020 14:27

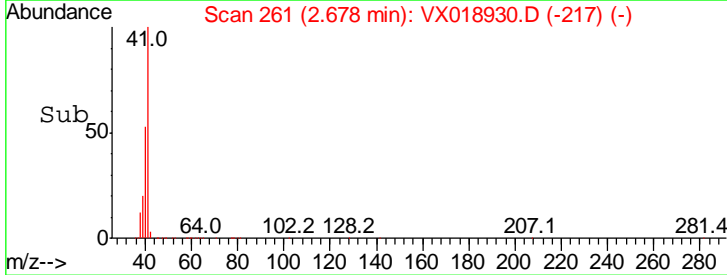
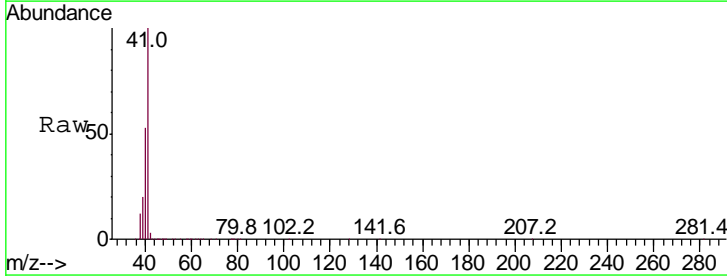
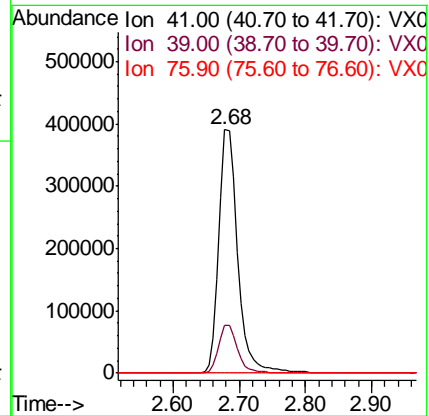
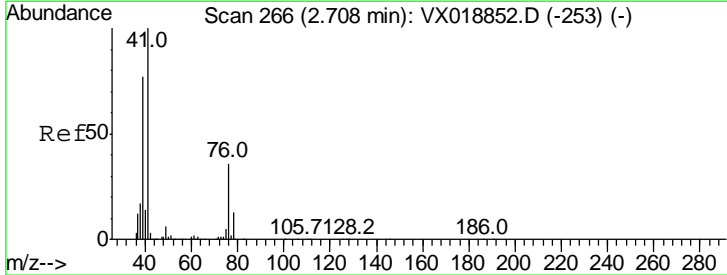
| Tgt Ion | Resp | Lower | Upper |
|---------|------|-------|-------|
| 56 | 100 | | |
| 55 | 69.7 | 58.6 | 87.8 |

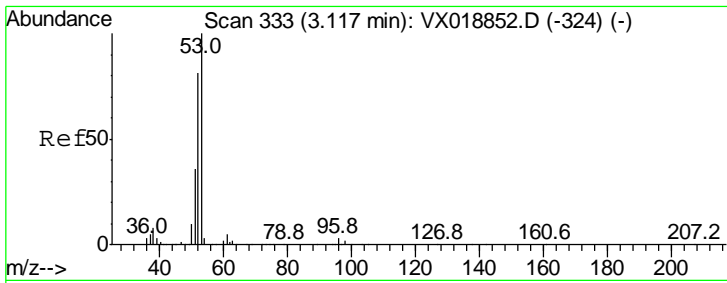
Instrument :
 MSVOA_X
ClientSampled :
 WASTE-ROOM-SAMPLEDL2



#14
 Allyl chloride
 Concen: 178.598 ug/l
 RT: 2.68 min Scan# 261
 Delta R.T. -0.03 min
 Lab File: VX018930.D
 Acq: 13 Oct 2020 14:27

| Tgt Ion | Resp | Lower | Upper |
|---------|------|-------|-------|
| 41 | 100 | | |
| 39 | 20.0 | 57.8 | 86.8# |
| 76 | 0.0 | 26.8 | 40.2# |

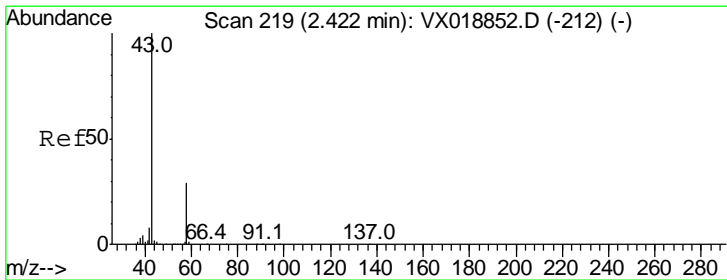
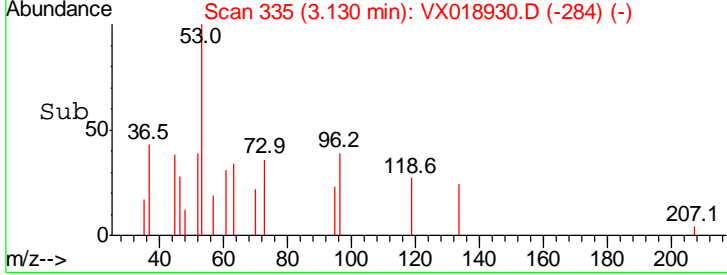
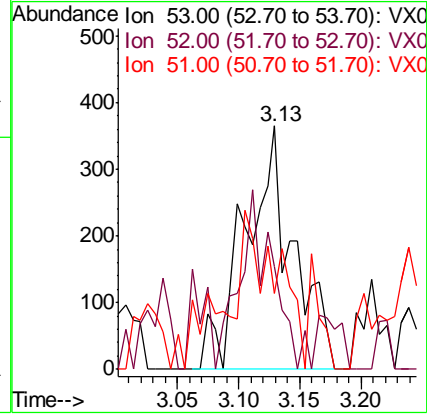
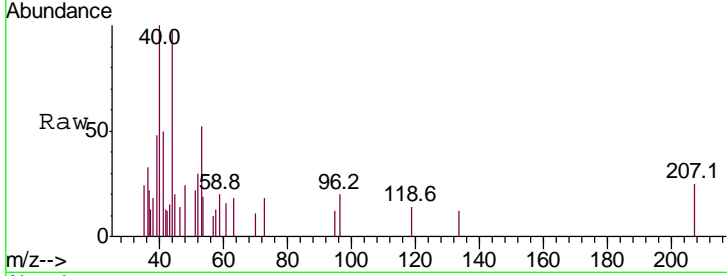




#15
 Acrylonitrile
 Concen: 0.783 ug/l
 RT: 3.13 min Scan# 335
 Delta R.T. 0.01 min
 Lab File: VX018930.D
 Acq: 13 Oct 2020 14:27

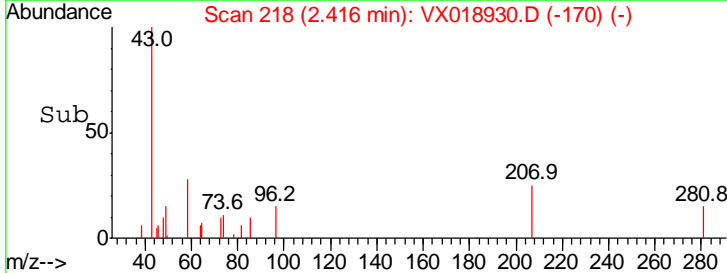
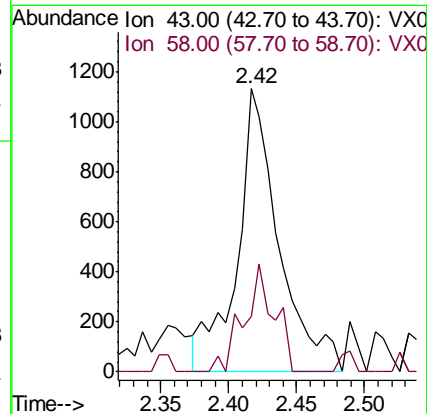
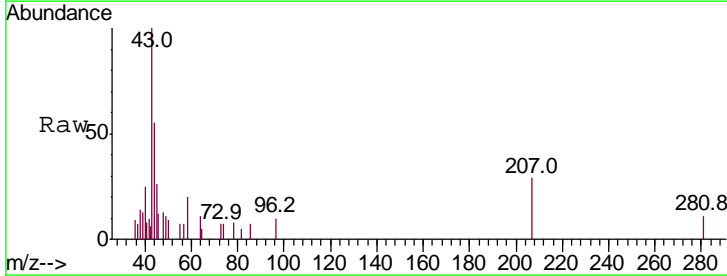
Instrument :
 MSVOA_X
 ClientSampled :
 WASTE-ROOM-SAMPLEDL2

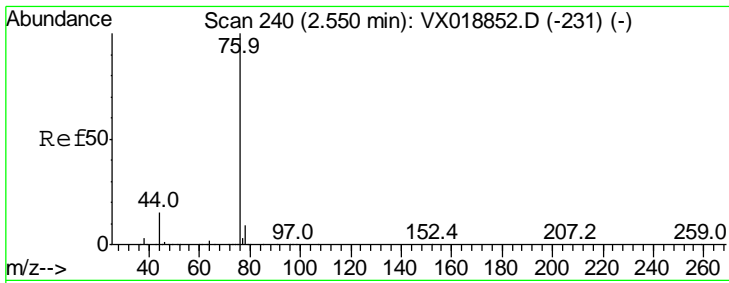
| Tgt Ion | Resp | Lower | Upper |
|---------|------|-------|--------|
| 53 | 100 | | |
| 52 | 0.0 | 66.7 | 100.1# |
| 51 | 0.0 | 30.3 | 45.5# |



#16
 Acetone
 Concen: Below Cal
 RT: 2.42 min Scan# 218
 Delta R.T. -0.00 min
 Lab File: VX018930.D
 Acq: 13 Oct 2020 14:27

| Tgt Ion | Resp | Lower | Upper |
|---------|------|-------|-------|
| 43 | 100 | | |
| 58 | 19.8 | 23.0 | 34.4# |

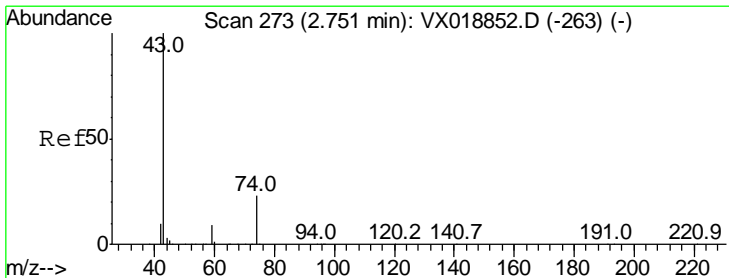
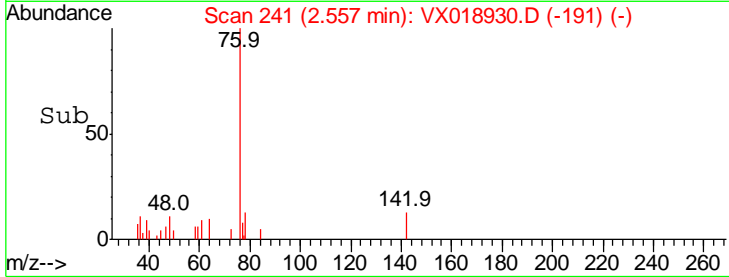
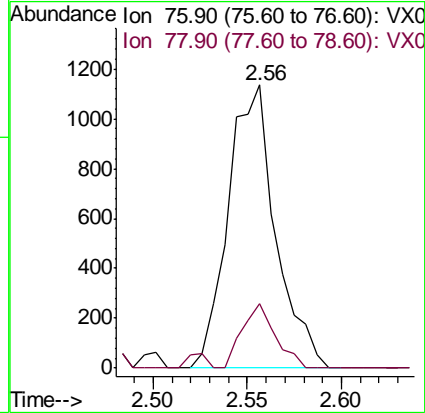
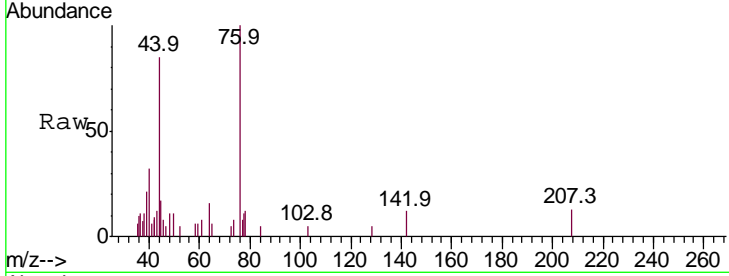




#17
 Carbon Disulfide
 Concen: 0.283 ug/l
 RT: 2.56 min Scan# 241
 Delta R.T. 0.01 min
 Lab File: VX018930.D
 Acq: 13 Oct 2020 14:27

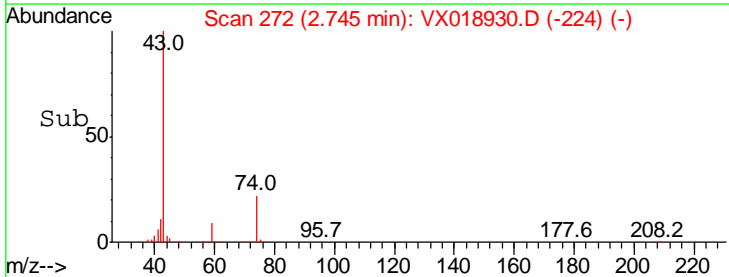
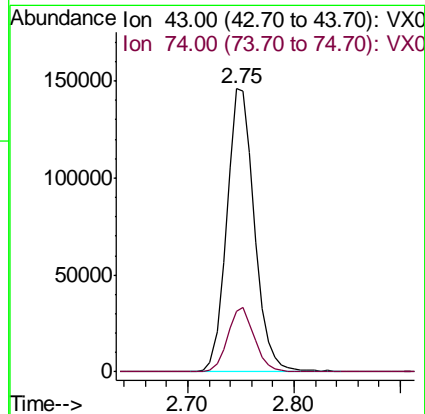
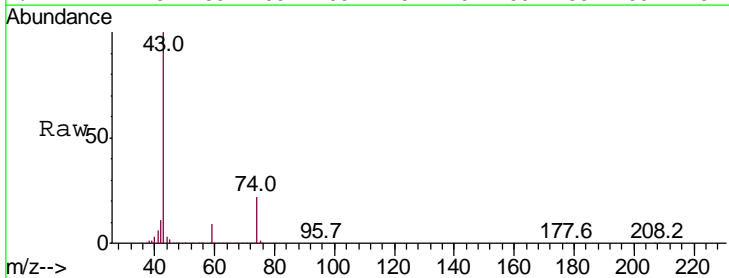
Instrument :
 MSVOA_X
 ClientSampled :
 WASTE-ROOM-SAMPLEDL2

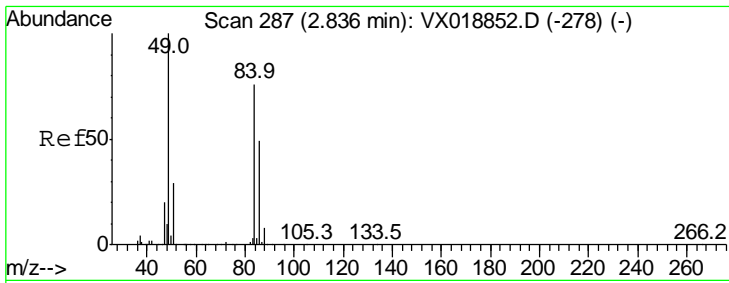
Tgt Ion: 76 Resp: 1978
 Ion Ratio Lower Upper
 76 100
 78 22.9 7.3 10.9#



#18
 Methyl Acetate
 Concen: 83.994 ug/l
 RT: 2.75 min Scan# 272
 Delta R.T. -0.01 min
 Lab File: VX018930.D
 Acq: 13 Oct 2020 14:27

Tgt Ion: 43 Resp: 265698
 Ion Ratio Lower Upper
 43 100
 74 22.2 18.9 28.3

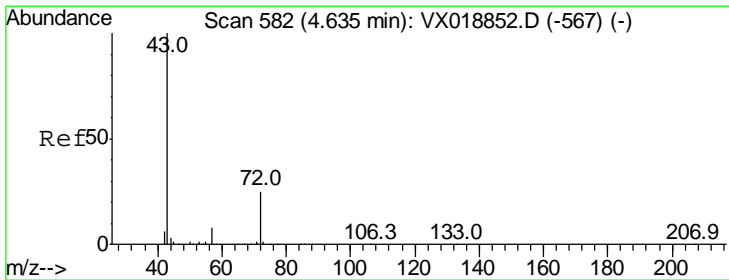
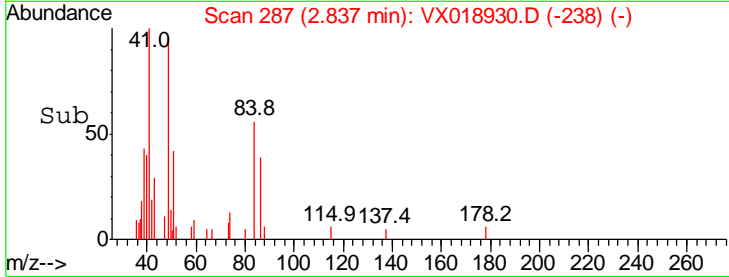
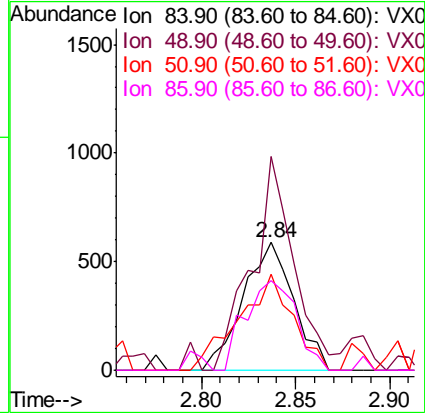
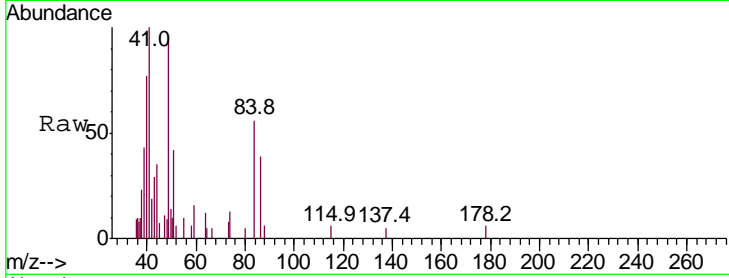




#20
Methylene Chloride
Concen: 0.902 ug/l
RT: 2.84 min Scan# 287
Delta R.T. 0.00 min
Lab File: VX018930.D
Acq: 13 Oct 2020 14:27

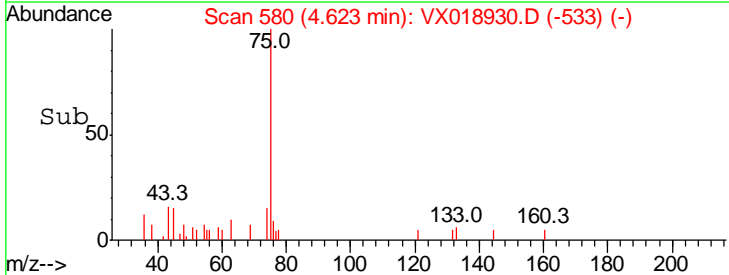
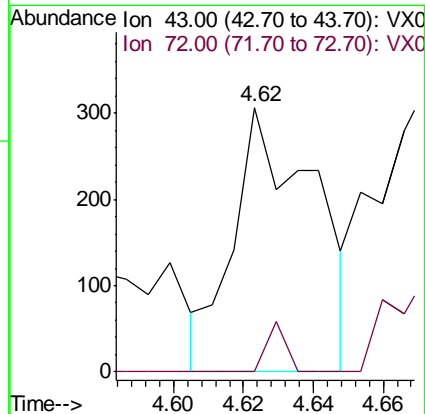
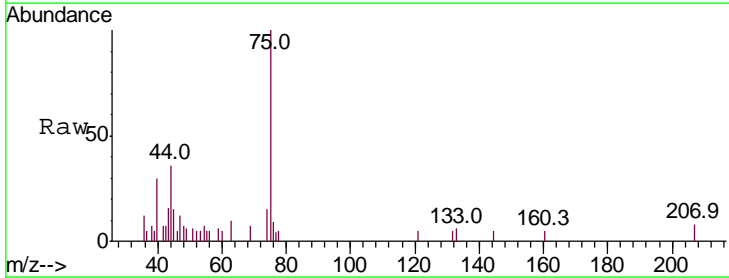
Instrument : MSVOA_X
ClientSampled : WASTE-ROOM-SAMPLEDL2

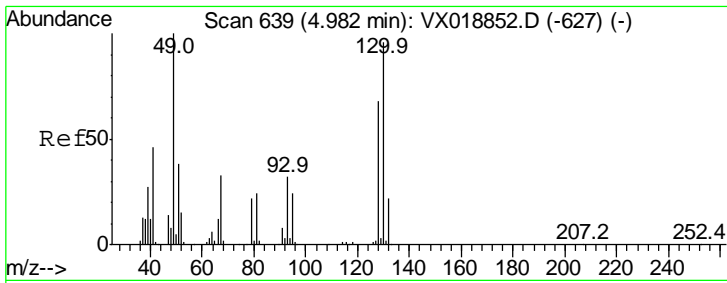
| Tgt Ion | Resp | Lower | Upper |
|---------|-------|-------|-------|
| 84 | 1093 | | |
| 84 | 100 | | |
| 49 | 154.3 | 104.8 | 157.2 |
| 51 | 75.2 | 30.6 | 46.0# |
| 86 | 70.1 | 50.8 | 76.2 |



#25
2-Butanone
Concen: 0.239 ug/l
RT: 4.62 min Scan# 580
Delta R.T. -0.01 min
Lab File: VX018930.D
Acq: 13 Oct 2020 14:27

| Tgt Ion | Resp | Lower | Upper |
|---------|------|-------|-------|
| 43 | 492 | | |
| 43 | 100 | | |
| 72 | 0.0 | 20.2 | 30.4# |

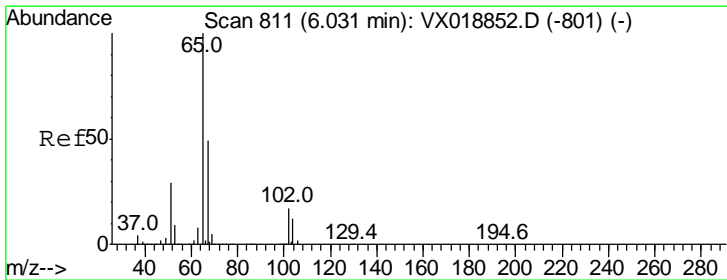
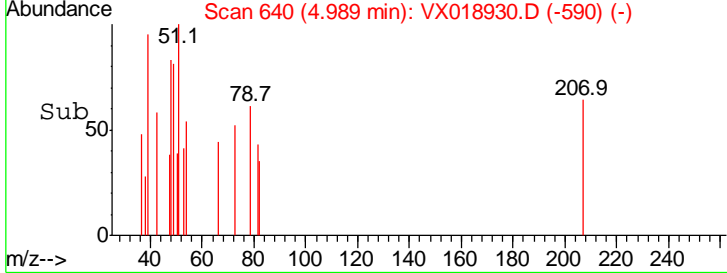
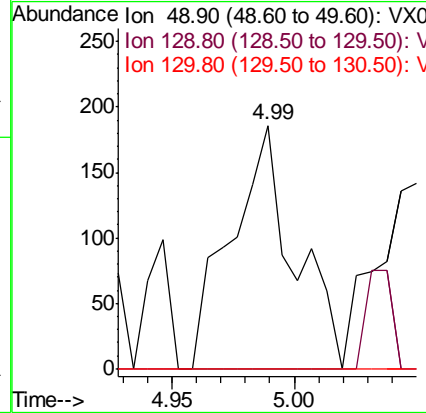
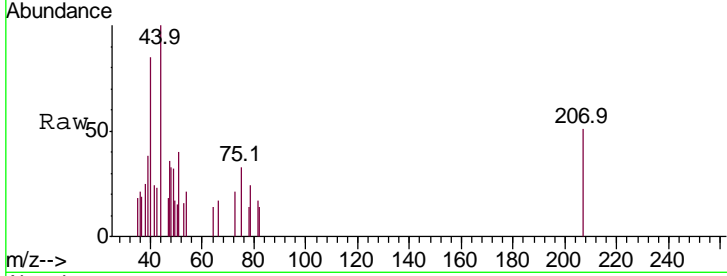




#28
 Bromochloromethane
 Concen: 1.663 ug/l
 RT: 4.99 min Scan# 640
 Delta R.T. 0.01 min
 Lab File: VX018930.D
 Acq: 13 Oct 2020 14:27

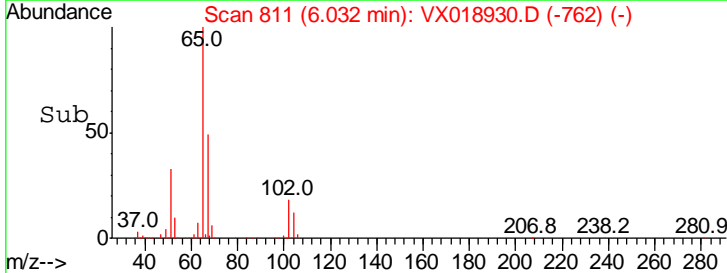
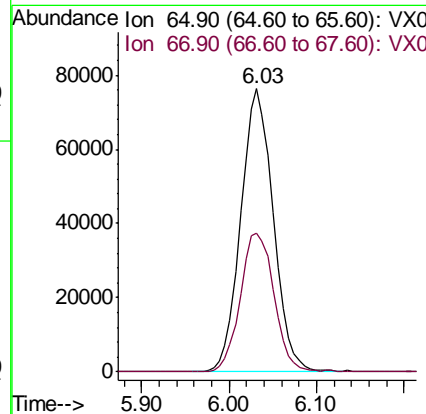
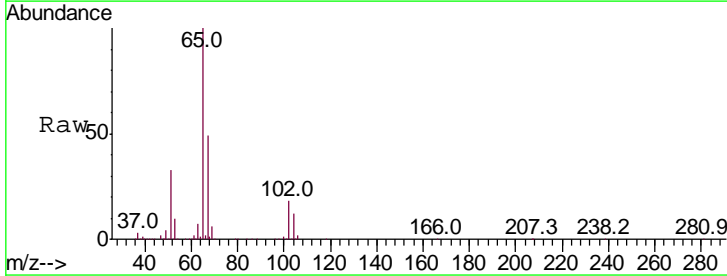
Instrument :
 MSVOA_X
ClientSampled :
 WASTE-ROOM-SAMPLEDL2

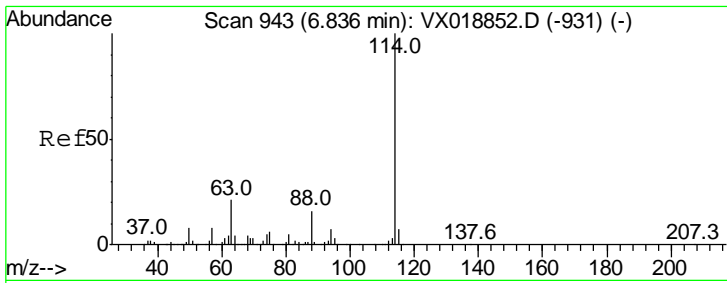
| Tgt Ion | Resp | Lower | Upper |
|---------|------|-------|--------|
| 49 | 100 | | |
| 129 | 0.0 | 0.0 | 5.4 |
| 130 | 0.0 | 71.2 | 106.8# |



#33
 1,2-Dichloroethane-d4
 Concen: 51.876 ug/l
 RT: 6.03 min Scan# 811
 Delta R.T. 0.00 min
 Lab File: VX018930.D
 Acq: 13 Oct 2020 14:27

| Tgt Ion | Resp | Lower | Upper |
|---------|------|-------|-------|
| 65 | 100 | | |
| 67 | 50.9 | 0.0 | 97.0 |

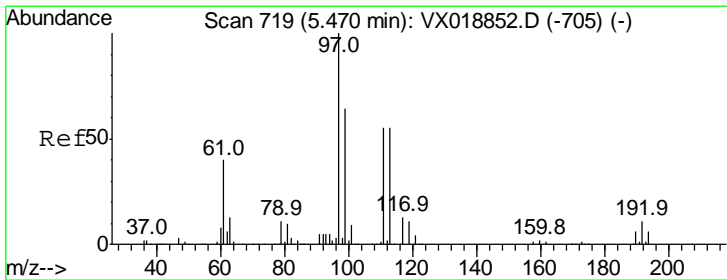
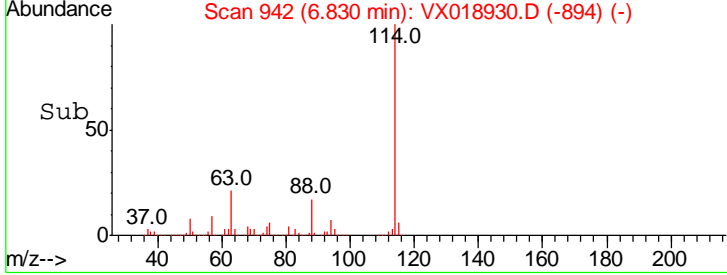
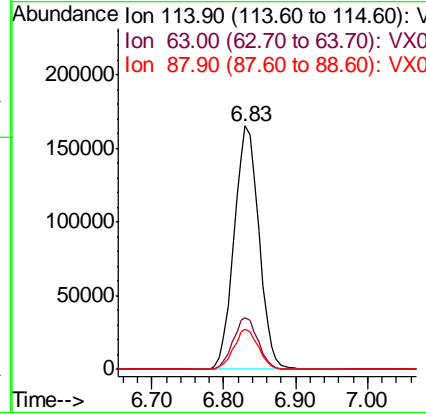
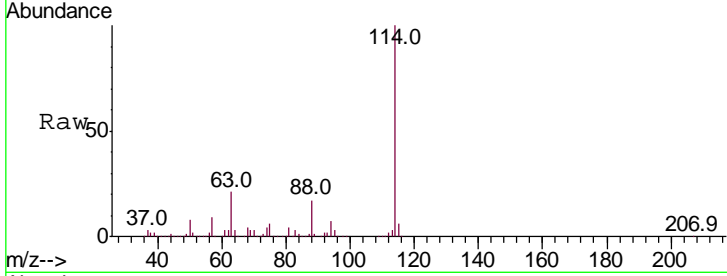




#34
 1,4-Difluorobenzene
 Concen: 50.000 ug/l
 RT: 6.83 min Scan# 942
 Delta R.T. -0.01 min
 Lab File: VX018930.D
 Acq: 13 Oct 2020 14:27

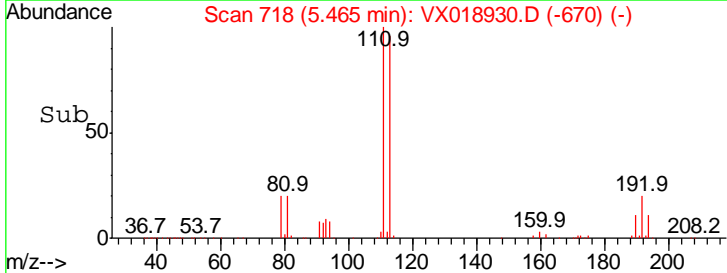
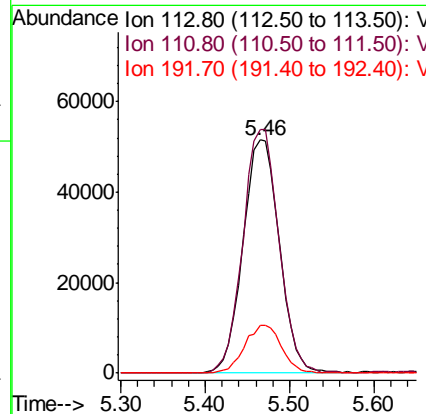
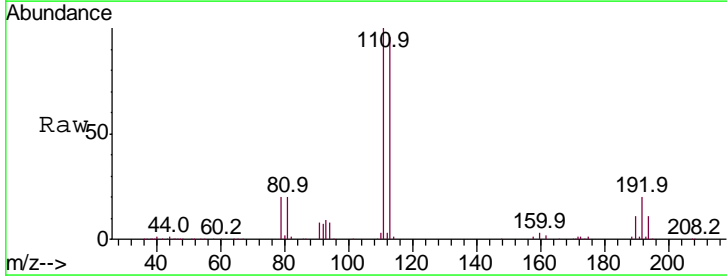
Instrument :
 MSVOA_X
 ClientSampled :
 WASTE-ROOM-SAMPLEDL2

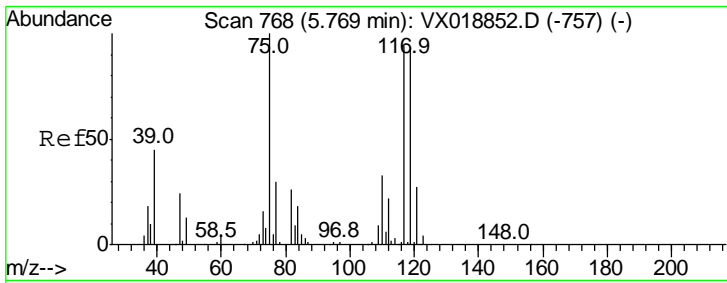
| Tgt Ion | Resp | Lower | Upper |
|---------|------|-------|-------|
| 114 | 100 | | |
| 63 | 21.3 | 0.0 | 42.4 |
| 88 | 16.7 | 0.0 | 32.6 |



#35
 Dibromofluoromethane
 Concen: 53.340 ug/l
 RT: 5.46 min Scan# 718
 Delta R.T. -0.01 min
 Lab File: VX018930.D
 Acq: 13 Oct 2020 14:27

| Tgt Ion | Resp | Lower | Upper |
|---------|-------|-------|-------|
| 113 | 100 | | |
| 111 | 103.3 | 80.1 | 120.1 |
| 192 | 20.8 | 16.0 | 24.0 |

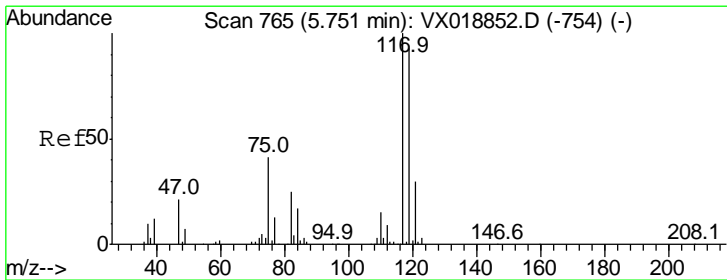
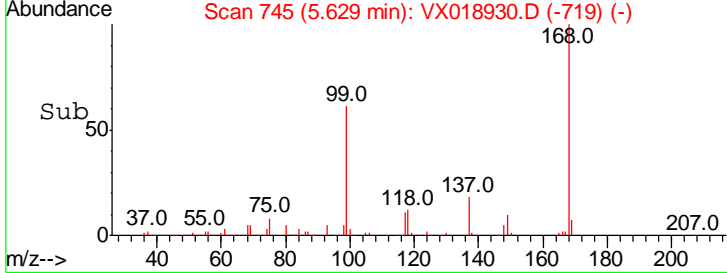
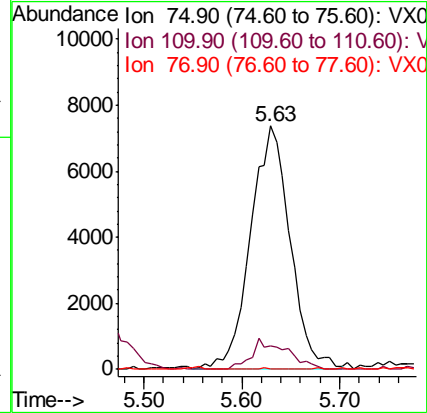
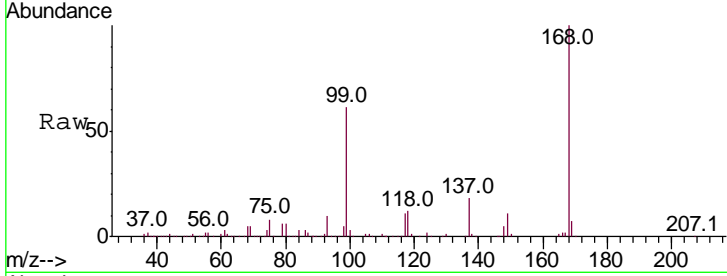




#36
 1,1-Dichloropropene
 Concen: 4.941 ug/l
 RT: 5.63 min Scan# 745
 Delta R.T. -0.14 min
 Lab File: VX018930.D
 Acq: 13 Oct 2020 14:27

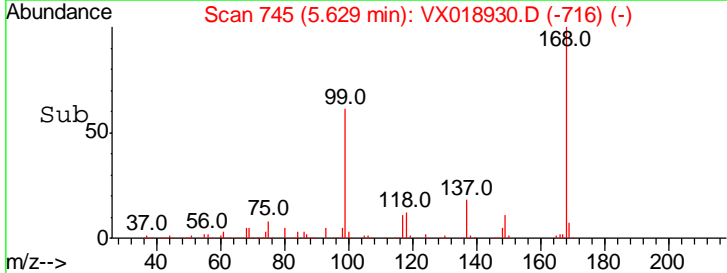
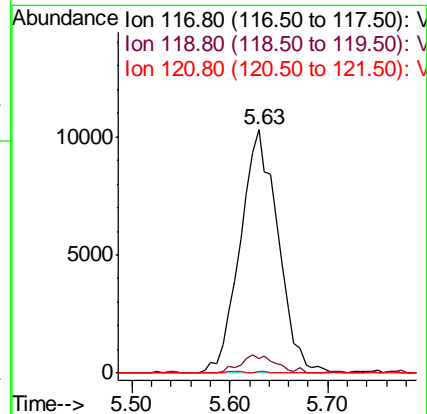
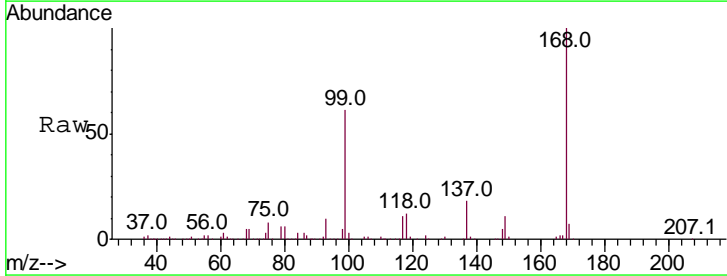
Instrument :
 MSVOA_X
 ClientSampled :
 WASTE-ROOM-SAMPLEDL2

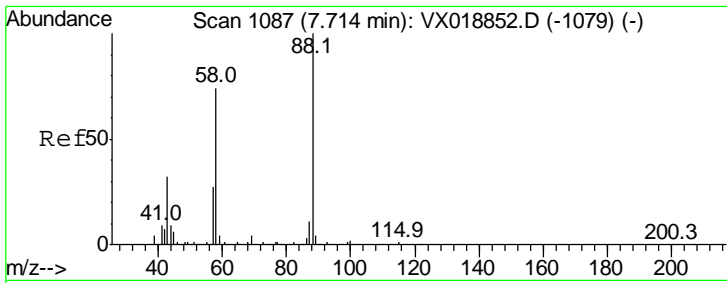
| Tgt Ion | Resp | Lower | Upper |
|---------|------|-------|-------|
| 75 | 100 | | |
| 110 | 11.1 | 17.8 | 53.5# |
| 77 | 0.1 | 24.2 | 36.4# |



#38
 Carbon Tetrachloride
 Concen: 5.342 ug/l
 RT: 5.63 min Scan# 745
 Delta R.T. -0.12 min
 Lab File: VX018930.D
 Acq: 13 Oct 2020 14:27

| Tgt Ion | Resp | Lower | Upper |
|---------|------|-------|--------|
| 117 | 100 | | |
| 119 | 5.8 | 73.9 | 110.9# |
| 121 | 0.6 | 23.6 | 35.4# |

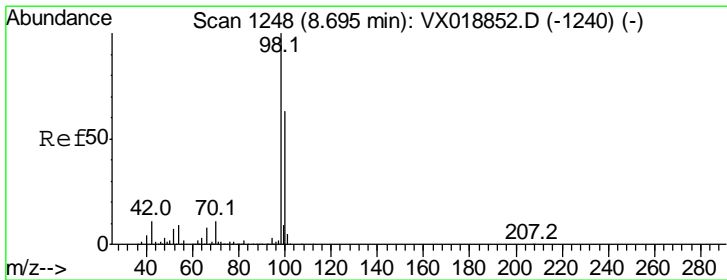
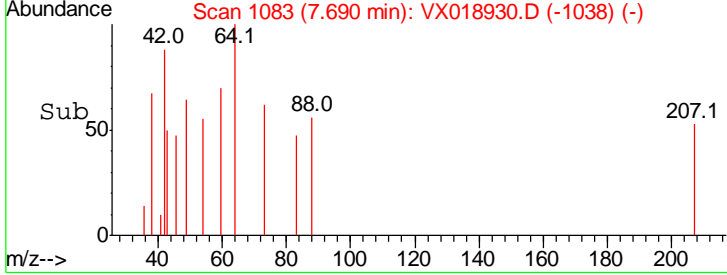
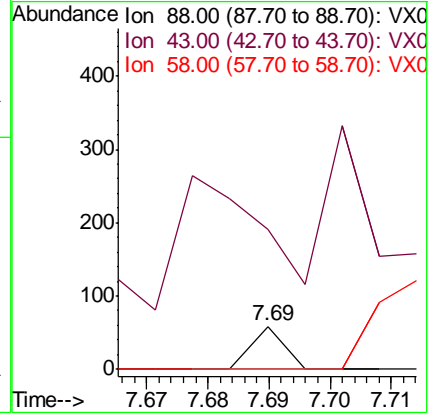
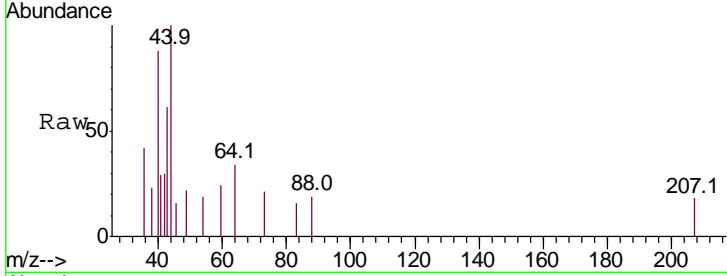




#49
 1,4-Dioxane
 Concen: 0.461 ug/l
 RT: 7.69 min Scan# 1083
 Delta R.T. -0.02 min
 Lab File: VX018930.D
 Acq: 13 Oct 2020 14:27

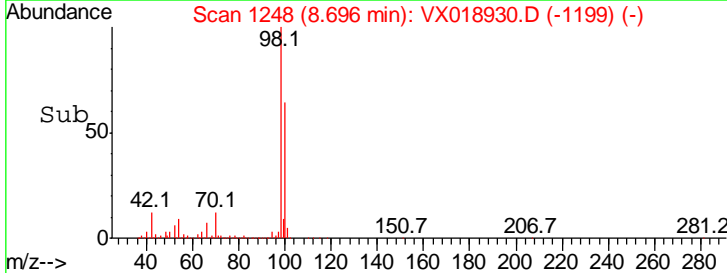
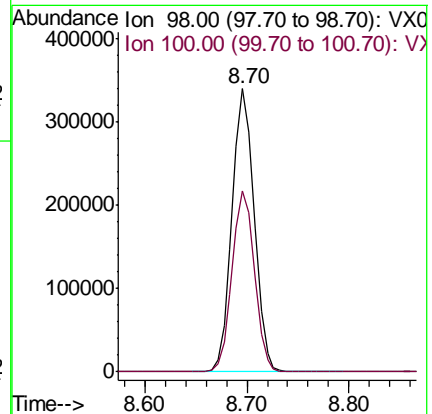
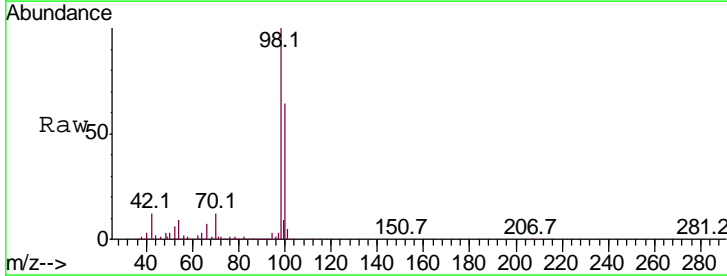
Instrument :
 MSVOA_X
 ClientSampled :
 WASTE-ROOM-SAMPLEDL2

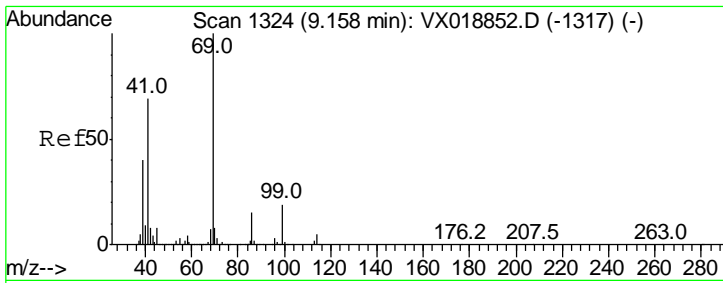
| Tgt Ion | Resp | Lower | Upper |
|---------|-------|-------|-------|
| 88 | 100 | | |
| 43 | 600.0 | 31.0 | 46.6# |
| 58 | 0.0 | 59.3 | 88.9# |



#50
 Toluene-d8
 Concen: 52.090 ug/l
 RT: 8.70 min Scan# 1248
 Delta R.T. 0.00 min
 Lab File: VX018930.D
 Acq: 13 Oct 2020 14:27

| Tgt Ion | Resp | Lower | Upper |
|---------|------|-------|-------|
| 98 | 100 | | |
| 100 | 64.5 | 53.1 | 79.7 |

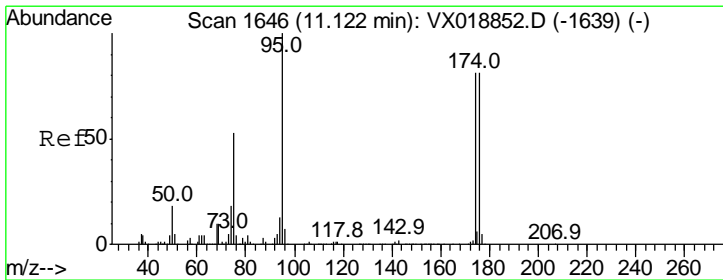
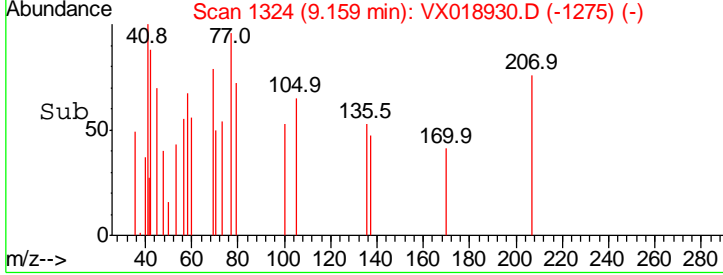
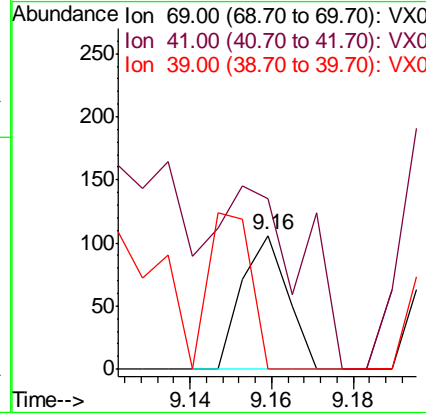
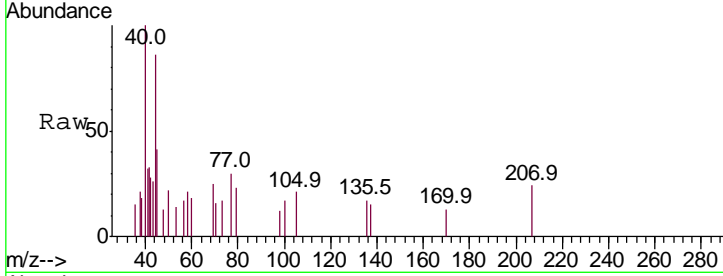




#56
 Ethyl methacrylate
 Concen: 2.952 ug/l
 RT: 9.16 min Scan# 1324
 Delta R.T. 0.00 min
 Lab File: VX018930.D
 Acq: 13 Oct 2020 14:27

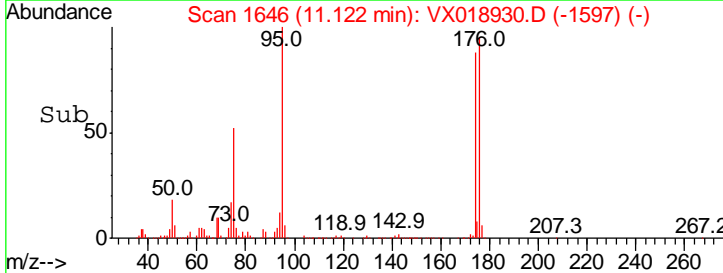
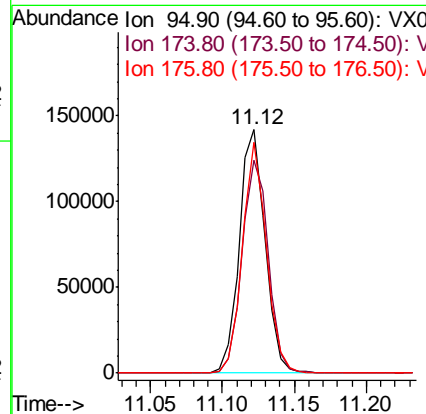
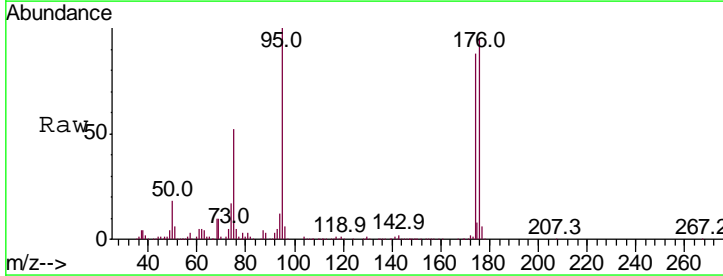
Instrument :
 MSVOA_X
 ClientSampled :
 WASTE-ROOM-SAMPLEDL2

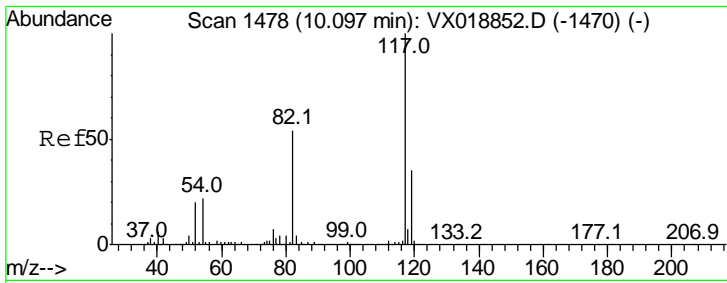
| Tgt Ion | Resp | Lower | Upper |
|---------|------|-------|-------|
| 69 | 100 | | |
| 41 | 0.0 | 54.6 | 81.8# |
| 39 | 0.0 | 31.5 | 47.3# |



#62
 4-Bromofluorobenzene
 Concen: 45.213 ug/l
 RT: 11.12 min Scan# 1646
 Delta R.T. 0.00 min
 Lab File: VX018930.D
 Acq: 13 Oct 2020 14:27

| Tgt Ion | Resp | Lower | Upper |
|---------|------|-------|-------|
| 95 | 100 | | |
| 174 | 89.2 | 0.0 | 160.0 |
| 176 | 88.3 | 0.0 | 161.2 |

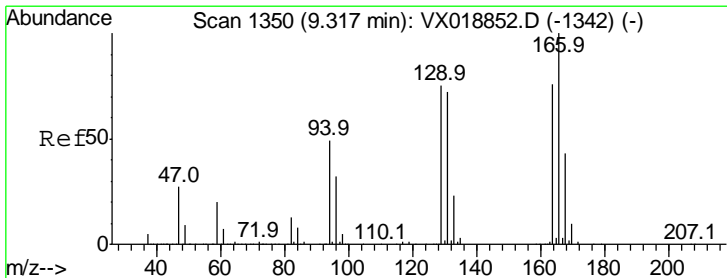
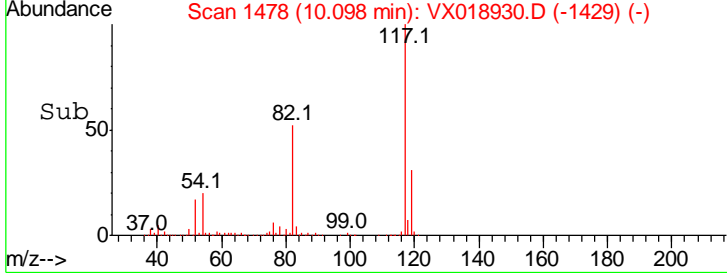
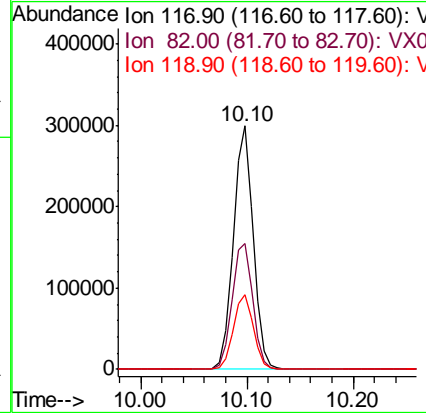
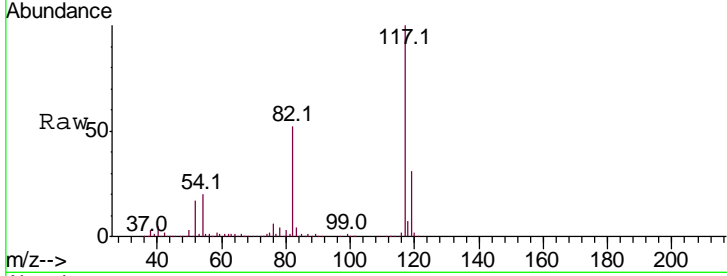




#63
 Chlorobenzene-d5
 Concen: 50.000 ug/l
 RT: 10.10 min Scan# 1478
 Delta R.T. 0.00 min
 Lab File: VX018930.D
 Acq: 13 Oct 2020 14:27

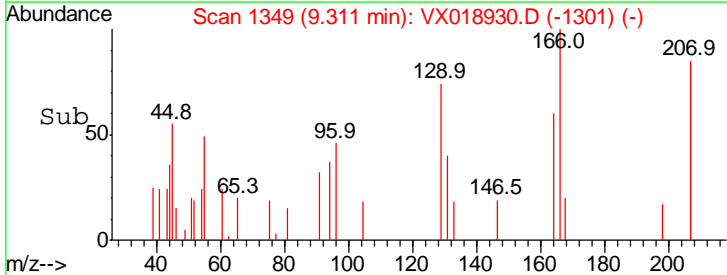
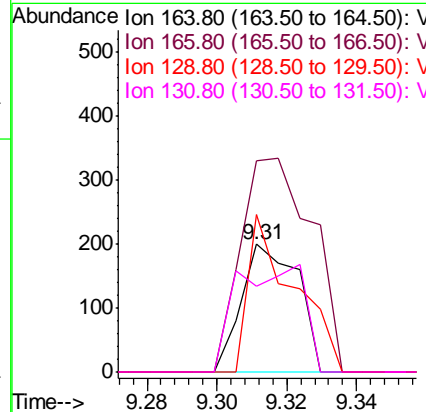
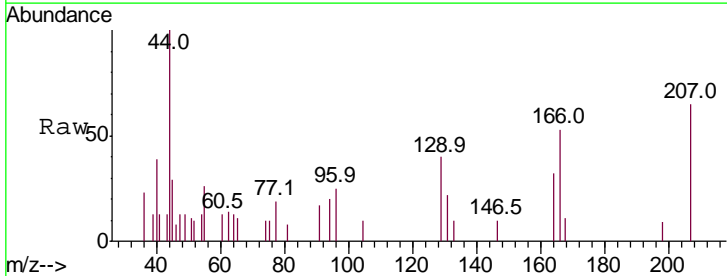
Instrument :
 MSVOA_X
 ClientSampled :
 WASTE-ROOM-SAMPLEDL2

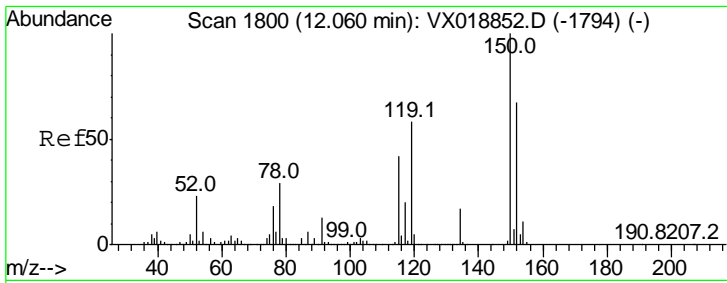
| Tgt Ion | Resp | Lower | Upper |
|---------|------|-------|-------|
| 117 | 100 | | |
| 82 | 51.9 | 43.4 | 65.2 |
| 119 | 30.9 | 28.3 | 42.5 |



#64
 Tetrachloroethene
 Concen: Below Cal
 RT: 9.31 min Scan# 1349
 Delta R.T. -0.01 min
 Lab File: VX018930.D
 Acq: 13 Oct 2020 14:27

| Tgt Ion | Resp | Lower | Upper |
|---------|-------|-------|--------|
| 164 | 100 | | |
| 166 | 165.8 | 105.4 | 158.0# |
| 129 | 123.1 | 79.0 | 118.6# |
| 131 | 66.8 | 75.7 | 113.5# |

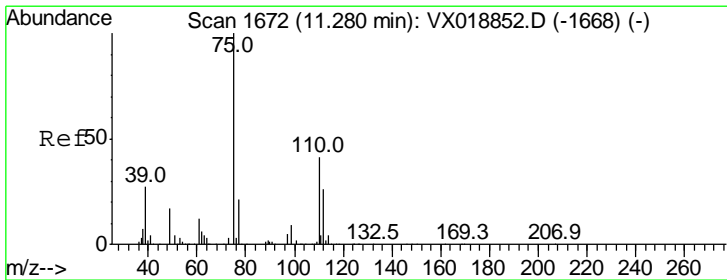
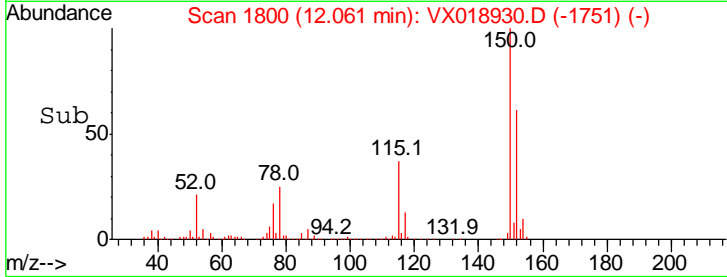
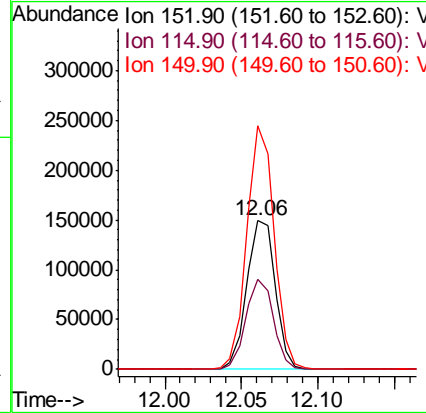
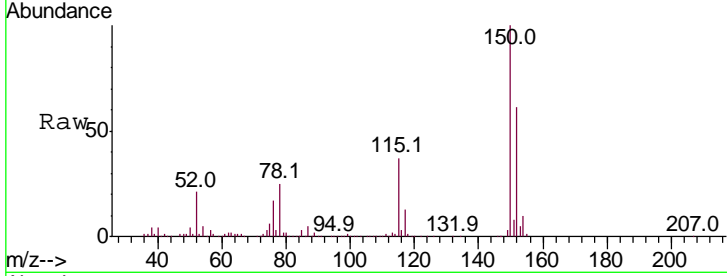




#72
 1,4-Dichlorobenzene-d4
 Concen: 50.000 ug/l
 RT: 12.06 min Scan# 1800
 Delta R.T. 0.00 min
 Lab File: VX018930.D
 Acq: 13 Oct 2020 14:27

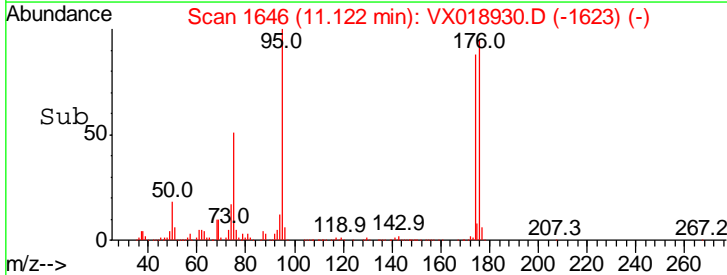
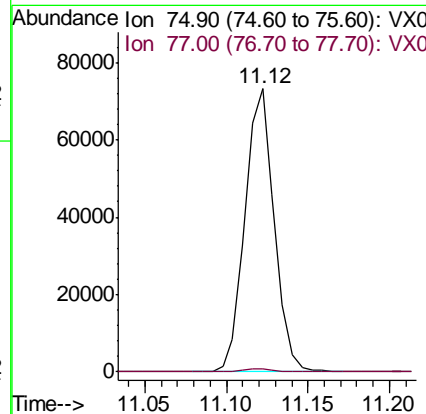
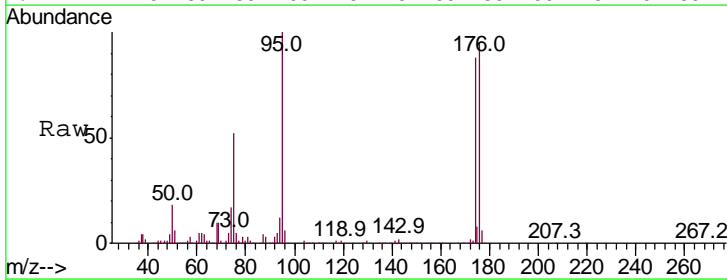
Instrument : MSVOA_X
 ClientSampled : WASTE-ROOM-SAMPLEDL2

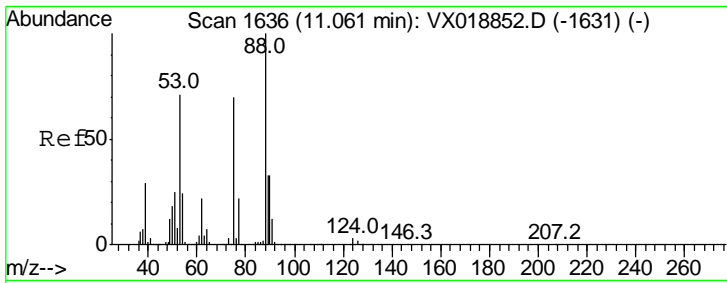
| Tgt Ion | Resp | Lower | Upper |
|---------|-------|-------|-------|
| 152 | 100 | | |
| 115 | 58.5 | 41.8 | 125.4 |
| 150 | 156.4 | 0.0 | 347.6 |



#76
 1,2,3-Trichloropropane
 Concen: 21.944 ug/l
 RT: 11.12 min Scan# 1646
 Delta R.T. -0.16 min
 Lab File: VX018930.D
 Acq: 13 Oct 2020 14:27

| Tgt Ion | Resp | Lower | Upper |
|---------|------|-------|-------|
| 75 | 100 | | |
| 77 | 1.3 | 20.2 | 60.6# |

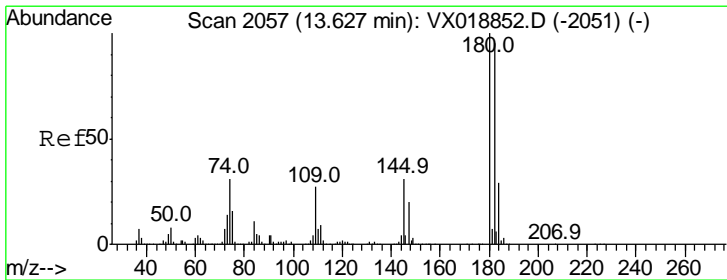
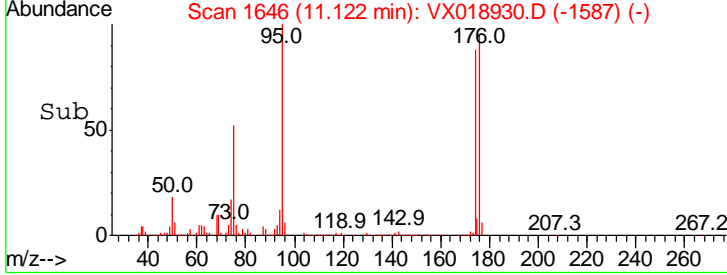
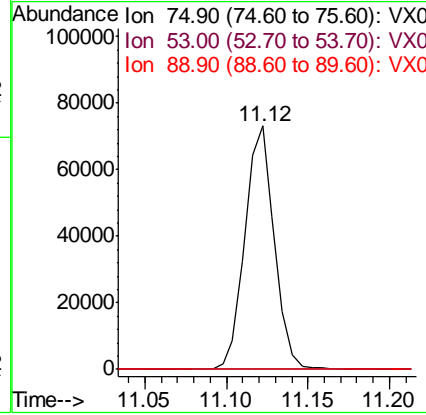
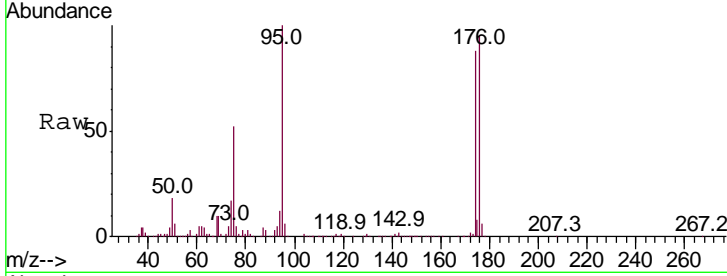




#81
 trans-1,4-Dichloro-2-butene
 Concen: 62.188 ug/l
 RT: 11.12 min Scan# 1646
 Delta R.T. 0.06 min
 Lab File: VX018930.D
 Acq: 13 Oct 2020 14:27

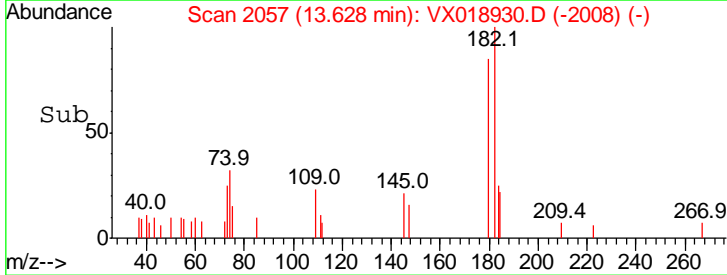
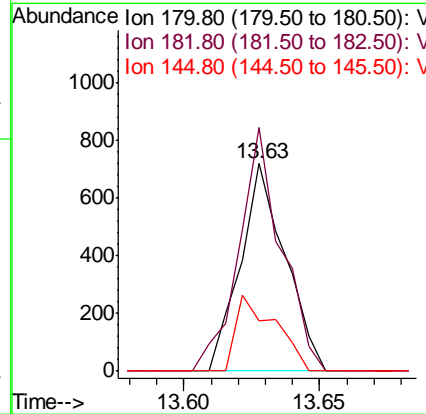
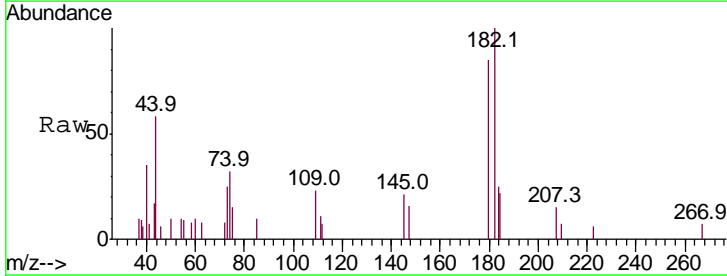
Instrument : MSVOA_X
 ClientSampleID : WASTE-ROOM-SAMPLEDL2

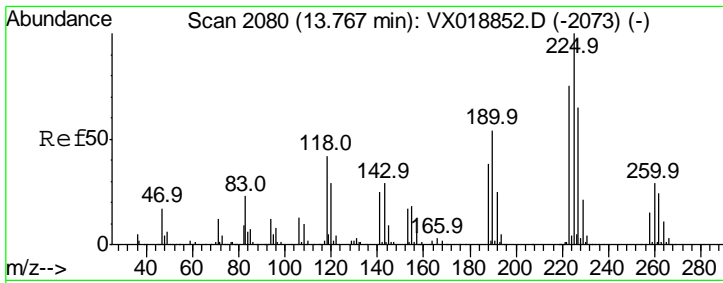
| Tgt Ion | Resp | Lower | Upper |
|---------|------|-------|--------|
| 75 | 100 | | |
| 53 | 0.4 | 85.0 | 127.4# |
| 89 | 0.0 | 39.0 | 58.4# |



#93
 1,2,4-Trichlorobenzene
 Concen: 0.211 ug/l
 RT: 13.63 min Scan# 2057
 Delta R.T. 0.00 min
 Lab File: VX018930.D
 Acq: 13 Oct 2020 14:27

| Tgt Ion | Resp | Lower | Upper |
|---------|-------|-------|-------|
| 180 | 100 | | |
| 182 | 110.3 | 49.1 | 147.3 |
| 145 | 31.9 | 16.0 | 48.0 |

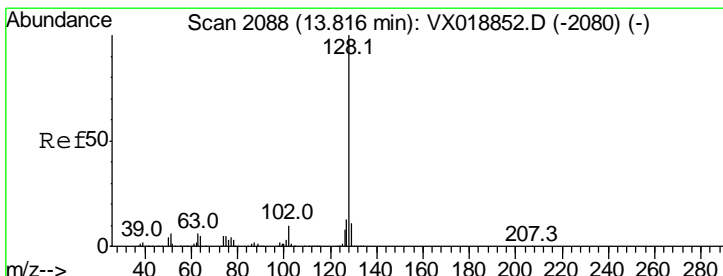
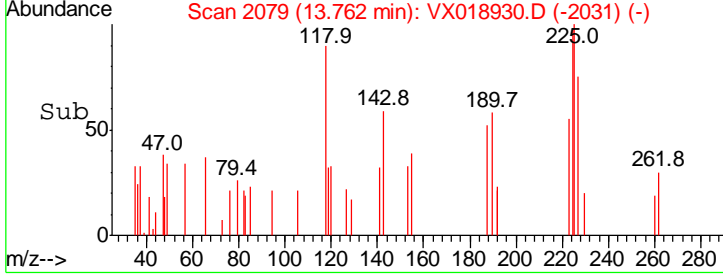
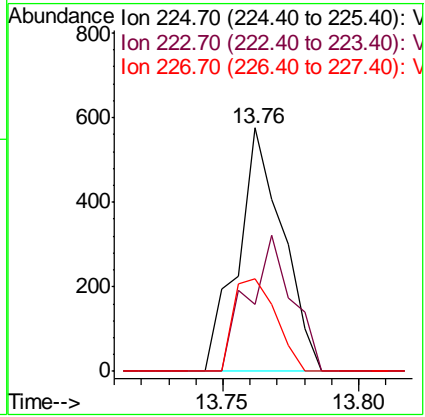
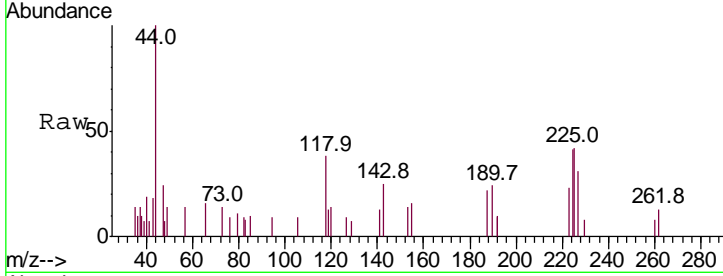




#94
 Hexachlorobutadiene
 Concen: 0.381 ug/l
 RT: 13.76 min Scan# 2079
 Delta R.T. -0.01 min
 Lab File: VX018930.D
 Acq: 13 Oct 2020 14:27

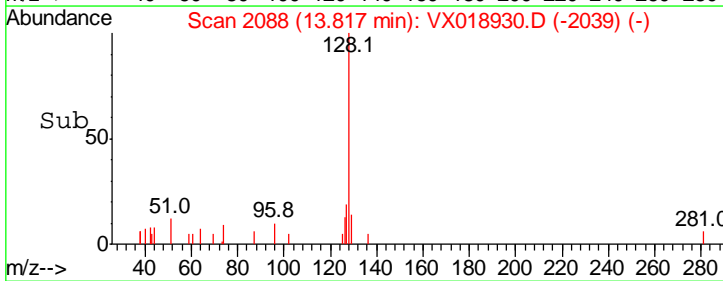
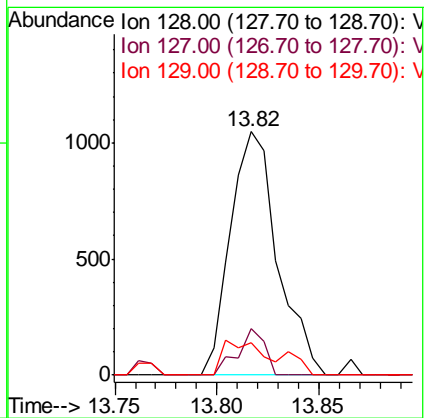
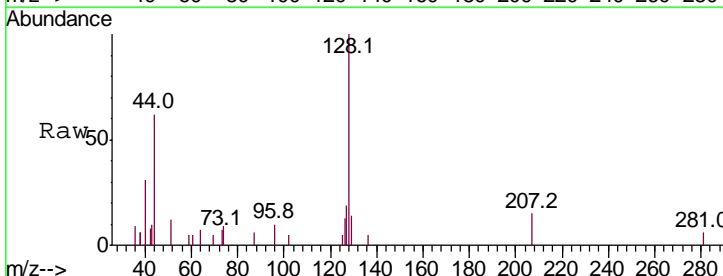
Instrument : MSVOA_X
 ClientSampled : WASTE-ROOM-SAMPLEDL2

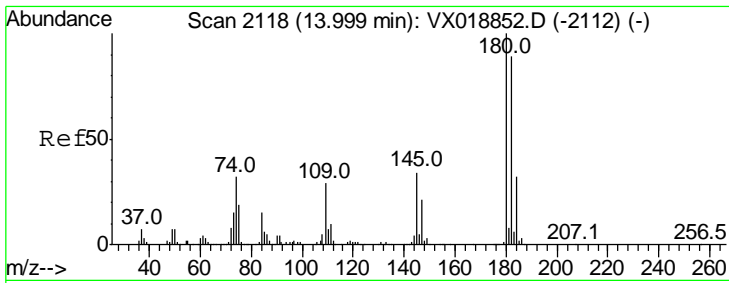
| Tgt Ion | Resp | Lower | Upper |
|---------|------|-------|-------|
| 225 | 100 | | |
| 223 | 54.7 | 32.1 | 96.3 |
| 227 | 35.8 | 33.0 | 98.9 |



#95
 Naphthalene
 Concen: 3.198 ug/l
 RT: 13.82 min Scan# 2088
 Delta R.T. 0.00 min
 Lab File: VX018930.D
 Acq: 13 Oct 2020 14:27

| Tgt Ion | Resp | Lower | Upper |
|---------|------|-------|-------|
| 128 | 100 | | |
| 127 | 11.0 | 10.1 | 15.1 |
| 129 | 15.6 | 8.6 | 13.0# |





#96
 1,2,3-Trichlorobenzene
 Concen: 0.203 ug/l
 RT: 14.00 min Scan# 2118
 Delta R.T. 0.00 min
 Lab File: VX018930.D
 Acq: 13 Oct 2020 14:27

Instrument :
 MSVOA_X
 ClientSampleId :
 WASTE-ROOM-SAMPLEDL2

Tot Ion:180 Resp: 776

| Ion | Ratio | Lower | Upper |
|-----|-------|-------|-------|
| 180 | 100 | | |
| 182 | 106.1 | 47.7 | 143.1 |
| 145 | 42.0 | 16.7 | 50.0 |

