

Data Path : Z:\voasrv\HPCHEM1\MSVOA_X\Data\VX101325\
 Data File : VX048128.D
 Acq On : 13 Oct 2025 09:46
 Operator : JC/MD
 Sample : VX1013WBL01
 Misc : 5.0mL/MSVOA_X/WATER
 ALS Vial : 4 Sample Multiplier: 1

Instrument :
 MSVOA_X
 ClientSampleId :
 VX1013WBL01

Quant Time: Oct 14 01:50:00 2025
 Quant Method : Z:\voasrv\HPCHEM1\MSVOA_X\Method\82X091625W.M
 Quant Title : SW846 8260
 QLast Update : Wed Sep 17 06:39:58 2025
 Response via : Initial Calibration

Compound	R.T.	QIon	Response	Conc	Units	Dev(Min)

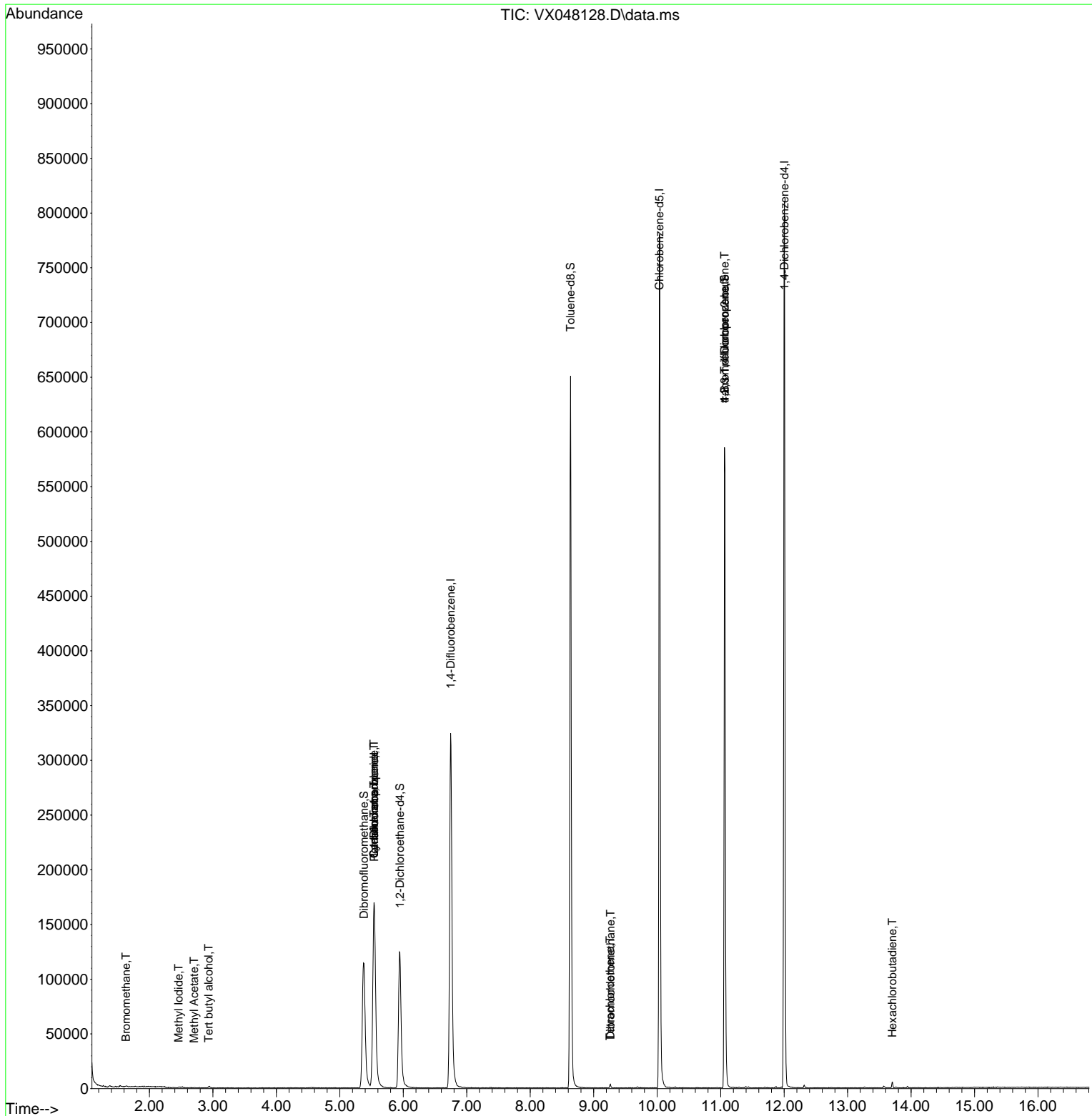
Internal Standards						
1) Pentafluorobenzene	5.544	168	171399	50.000	ug/l	0.00
34) 1,4-Difluorobenzene	6.745	114	348950	50.000	ug/l	0.00
63) Chlorobenzene-d5	10.037	117	354107	50.000	ug/l	0.00
72) 1,4-Dichlorobenzene-d4	12.006	152	171429	50.000	ug/l	0.00
System Monitoring Compounds						
33) 1,2-Dichloroethane-d4	5.946	65	135864	49.799	ug/l	0.00
Spiked Amount	50.000	Range 78 - 117	Recovery	=	99.600%	
35) Dibromofluoromethane	5.379	113	114475	48.916	ug/l	0.00
Spiked Amount	50.000	Range 75 - 124	Recovery	=	97.840%	
50) Toluene-d8	8.635	98	390815	48.262	ug/l	0.00
Spiked Amount	50.000	Range 92 - 112	Recovery	=	96.520%	
62) 4-Bromofluorobenzene	11.061	95	167555	54.521	ug/l	0.00
Spiked Amount	50.000	Range 83 - 123	Recovery	=	109.040%	
Target Compounds						
					Qvalue	
5) Bromomethane	1.630	94	595	0.411	ug/l #	58
10) Methyl Iodide	2.459	142	1019	0.330	ug/l #	94
11) Tert butyl alcohol	2.934	59	281	0.925	ug/l #	72
18) Methyl Acetate	2.703	43	557	0.211	ug/l #	62
31) Cyclohexane	5.538	56	4067	1.128	ug/l #	10
36) 1,1-Dichloropropene	5.538	75	14719	4.304	ug/l #	51
38) Carbon Tetrachloride	5.538	117	18335	4.935	ug/l #	18
60) Dibromochloromethane	9.263	129	662	0.233	ug/l #	11
64) Tetrachloroethene	9.256	164	546	0.237	ug/l #	84
76) 1,2,3-Trichloropropane	11.061	75	87263	25.141	ug/l #	40
81) trans-1,4-Dichloro-2-b...	11.061	75	87263	64.114	ug/l #	8
94) Hexachlorobutadiene	13.707	225	772	0.616	ug/l	96

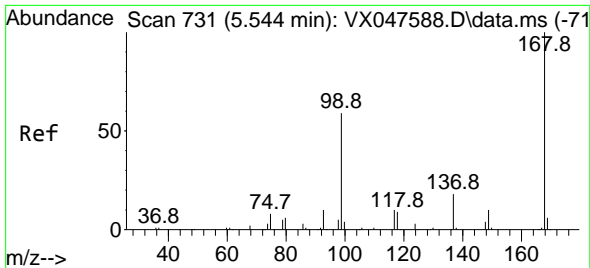
(#) = qualifier out of range (m) = manual integration (+) = signals summed

Data Path : Z:\voasrv\HPCHEM1\MSVOA_X\Data\VX101325\
 Data File : VX048128.D
 Acq On : 13 Oct 2025 09:46
 Operator : JC/MD
 Sample : VX1013WBL01
 Misc : 5.0mL/MSVOA_X/WATER
 ALS Vial : 4 Sample Multiplier: 1

Instrument :
 MSVOA_X
 ClientSampleId :
 VX1013WBL01

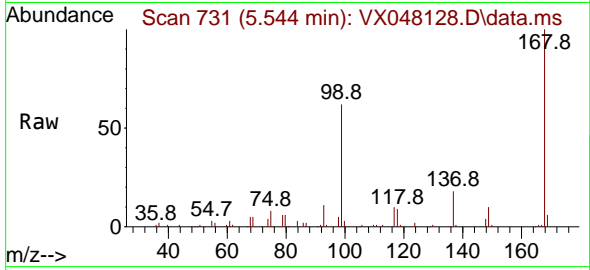
Quant Time: Oct 14 01:50:00 2025
 Quant Method : Z:\voasrv\HPCHEM1\MSVOA_X\Method\82X091625W.M
 Quant Title : SW846 8260
 QLast Update : Wed Sep 17 06:39:58 2025
 Response via : Initial Calibration



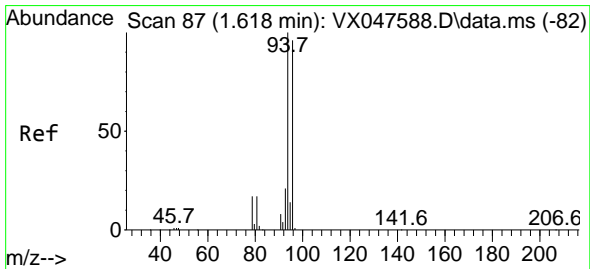
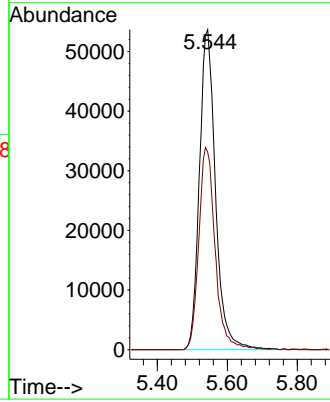
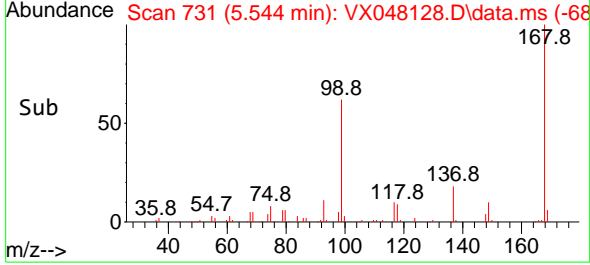


#1
 Pentafluorobenzene
 Concen: 50.000 ug/l
 RT: 5.544 min Scan# 71
 Delta R.T. -0.000 min
 Lab File: VX048128.D
 Acq: 13 Oct 2025 09:46

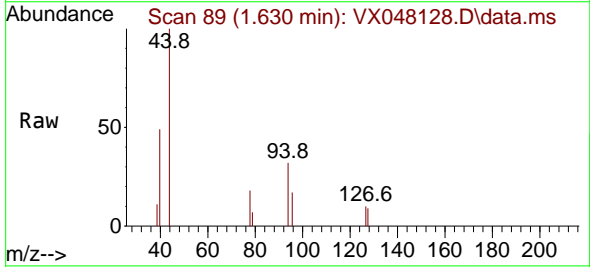
Instrument : MSVOA_X
 ClientSampleId : VX1013WBL01



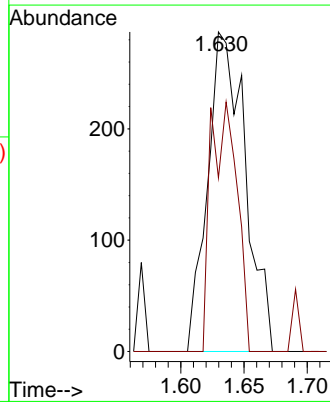
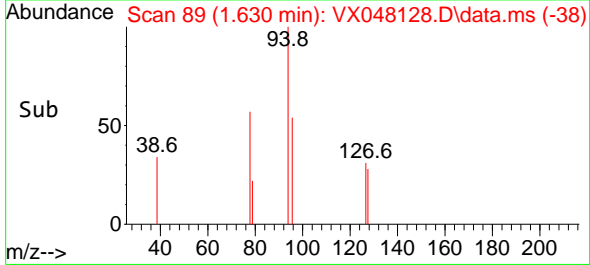
Tgt Ion:168 Resp: 171399
 Ion Ratio Lower Upper
 168 100
 99 61.7 48.8 73.2

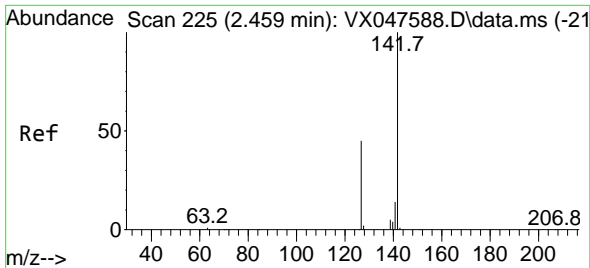


#5
 Bromomethane
 Concen: 0.411 ug/l
 RT: 1.630 min Scan# 89
 Delta R.T. 0.012 min
 Lab File: VX048128.D
 Acq: 13 Oct 2025 09:46



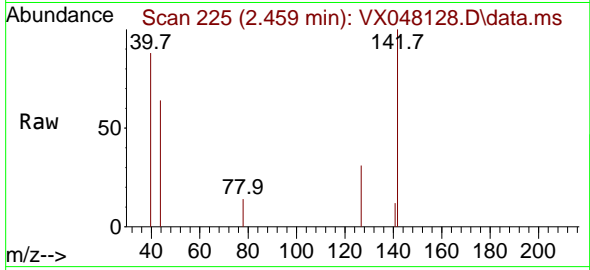
Tgt Ion: 94 Resp: 595
 Ion Ratio Lower Upper
 94 100
 96 54.4 76.6 115.0#





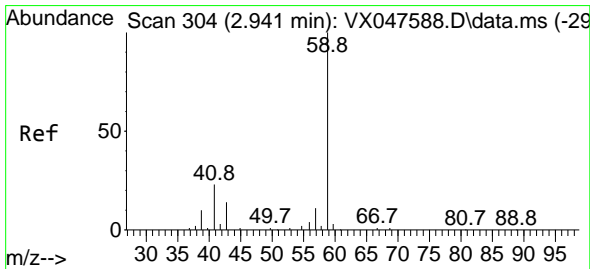
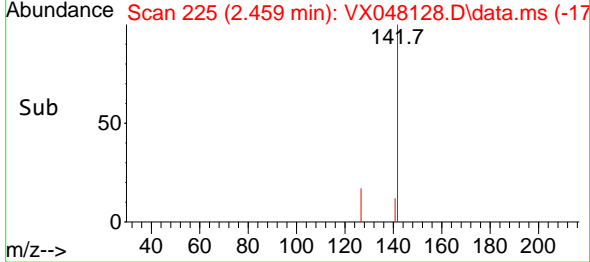
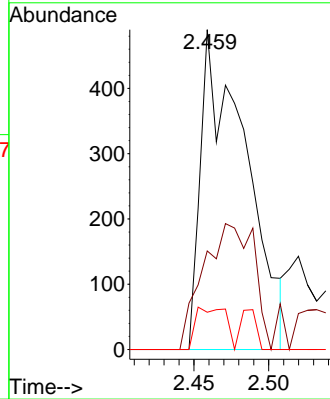
#10
 Methyl Iodide
 Concen: 0.330 ug/l
 RT: 2.459 min Scan# 21
 Delta R.T. -0.000 min
 Lab File: VX048128.D
 Acq: 13 Oct 2025 09:46

Instrument :
 MSVOA_X
 ClientSampleId :
 VX1013WBL01



Tgt Ion:142 Resp: 1019

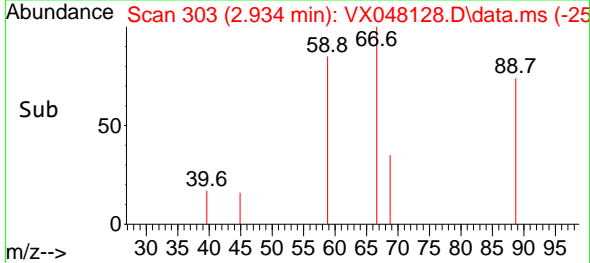
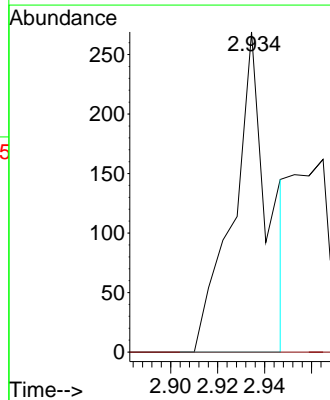
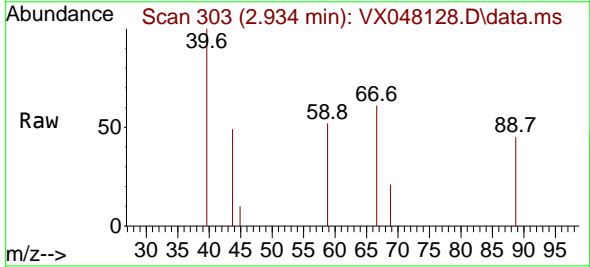
Ion	Ratio	Lower	Upper
142	100		
127	44.4	37.2	55.8
141	8.8	11.4	17.0#

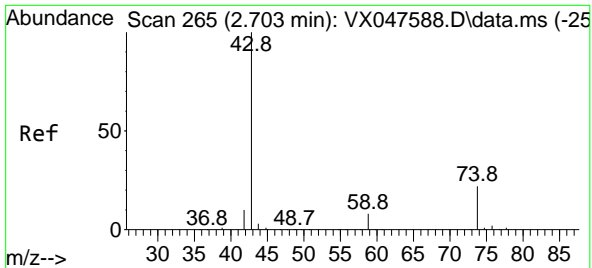


#11
 Tert butyl alcohol
 Concen: 0.925 ug/l
 RT: 2.934 min Scan# 303
 Delta R.T. -0.006 min
 Lab File: VX048128.D
 Acq: 13 Oct 2025 09:46

Tgt Ion: 59 Resp: 281

Ion	Ratio	Lower	Upper
59	100		
57	0.0	8.3	12.5#

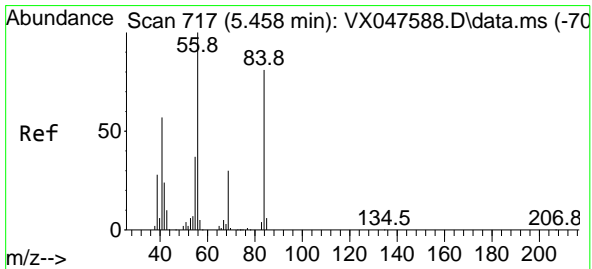
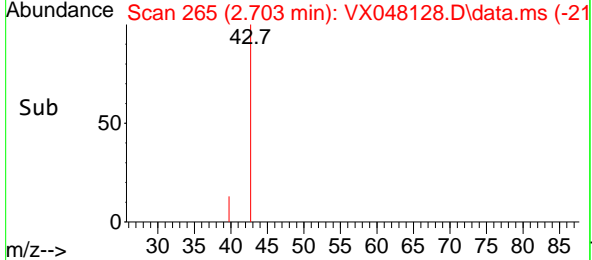
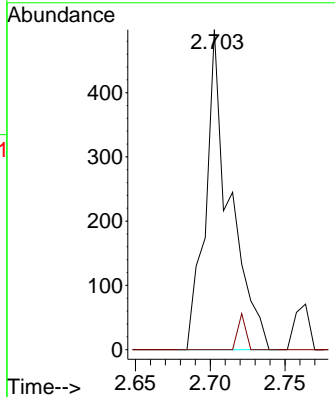
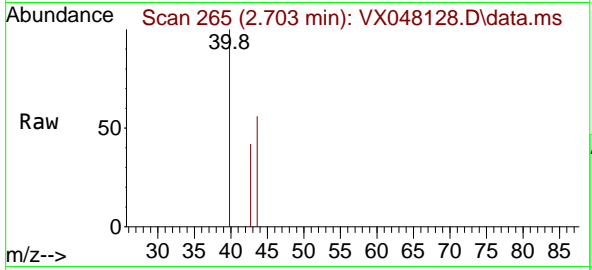




#18
 Methyl Acetate
 Concen: 0.211 ug/l
 RT: 2.703 min Scan# 20
 Delta R.T. -0.000 min
 Lab File: VX048128.D
 Acq: 13 Oct 2025 09:46

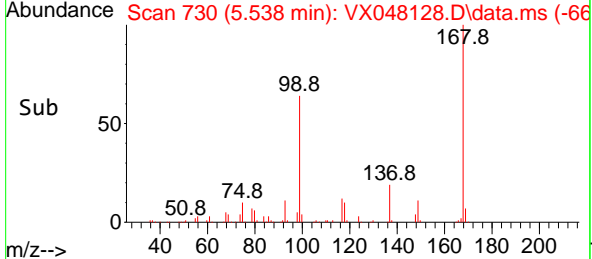
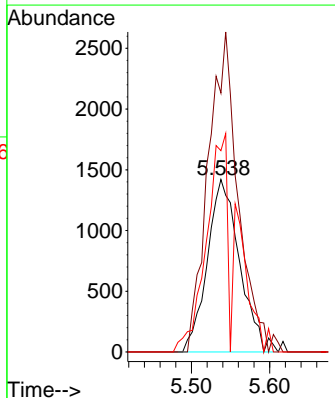
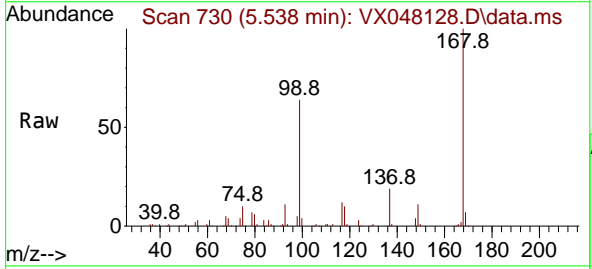
Instrument : MSVOA_X
 Client SampleId : VX1013WBL01

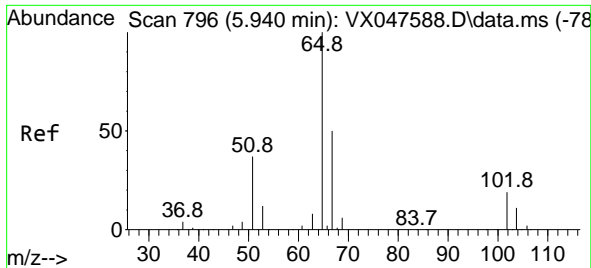
Tgt Ion: 43 Resp: 557
 Ion Ratio Lower Upper
 43 100
 74 3.6 17.4 26.2#



#31
 Cyclohexane
 Concen: 1.128 ug/l
 RT: 5.538 min Scan# 730
 Delta R.T. 0.079 min
 Lab File: VX048128.D
 Acq: 13 Oct 2025 09:46

Tgt Ion: 56 Resp: 4067
 Ion Ratio Lower Upper
 56 100
 69 150.1 23.8 35.8#
 84 116.8 64.6 97.0#





#33
 1,2-Dichloroethane-d4
 Concen: 49.799 ug/l
 RT: 5.946 min Scan# 796
 Delta R.T. 0.006 min
 Lab File: VX048128.D
 Acq: 13 Oct 2025 09:46

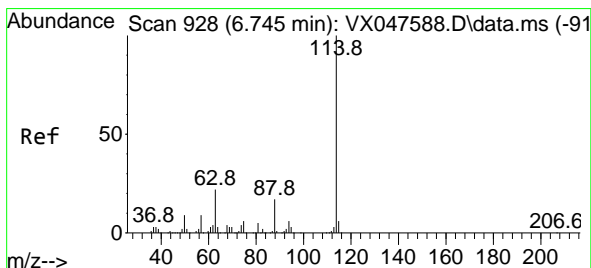
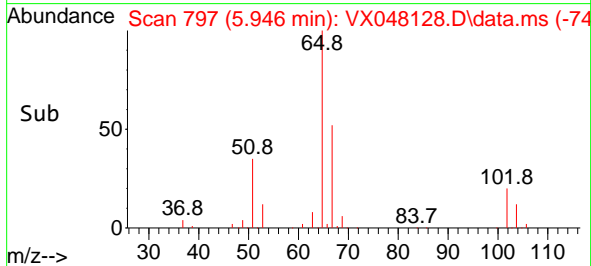
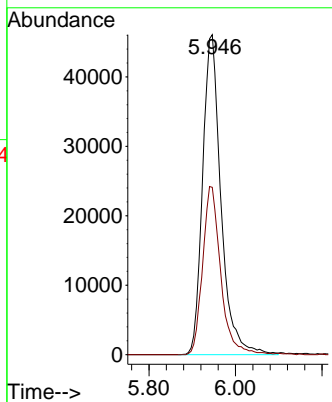
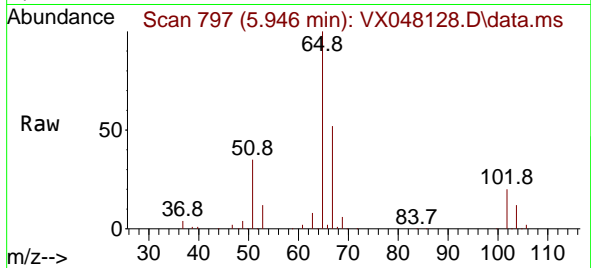
Instrument :

MSVOA_X

ClientSampleId :

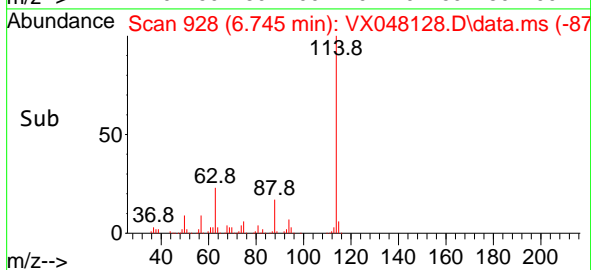
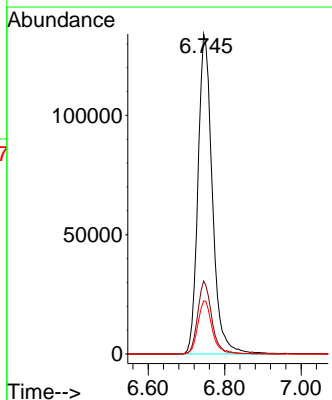
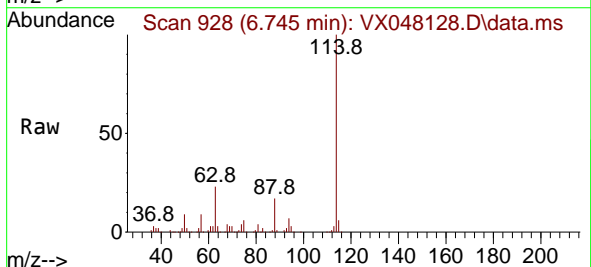
VX1013WBL01

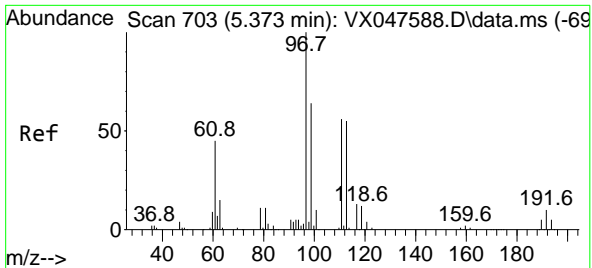
Tgt Ion: 65 Resp: 135864
 Ion Ratio Lower Upper
 65 100
 67 51.7 0.0 103.0



#34
 1,4-Difluorobenzene
 Concen: 50.000 ug/l
 RT: 6.745 min Scan# 928
 Delta R.T. -0.000 min
 Lab File: VX048128.D
 Acq: 13 Oct 2025 09:46

Tgt Ion:114 Resp: 348950
 Ion Ratio Lower Upper
 114 100
 63 22.8 0.0 44.0
 88 16.6 0.0 34.2



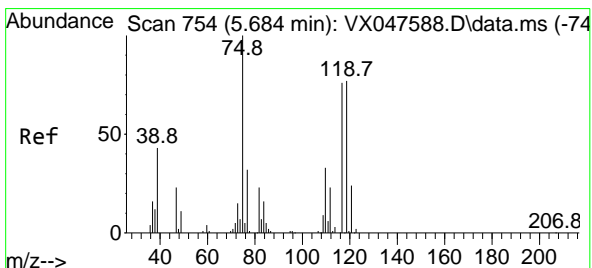
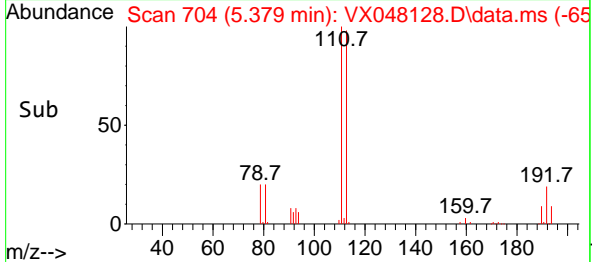
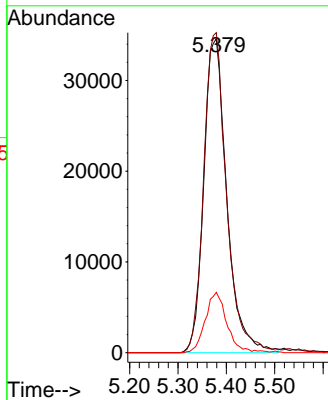
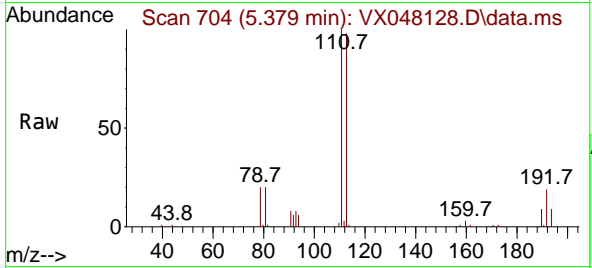


#35
 Dibromofluoromethane
 Concen: 48.916 ug/l
 RT: 5.379 min Scan# 704
 Delta R.T. 0.006 min
 Lab File: VX048128.D
 Acq: 13 Oct 2025 09:46

Instrument : MSVOA_X
 ClientSampleId : VX1013WBL01

Tgt Ion:113 Resp: 114475

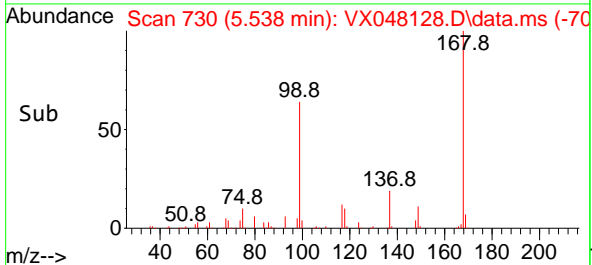
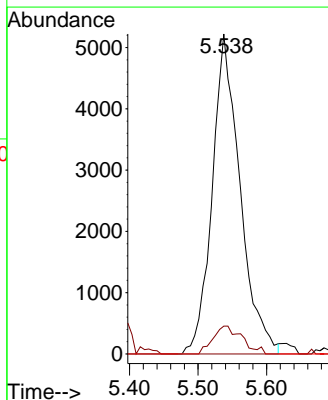
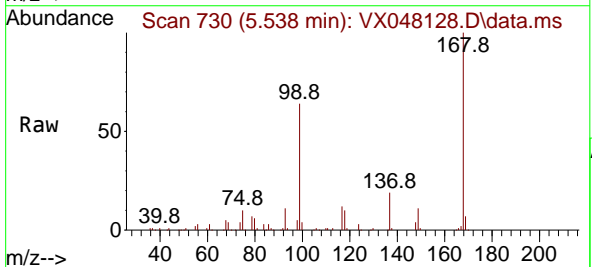
Ion	Ratio	Lower	Upper
113	100		
111	101.3	80.9	121.3
192	18.1	14.2	21.4

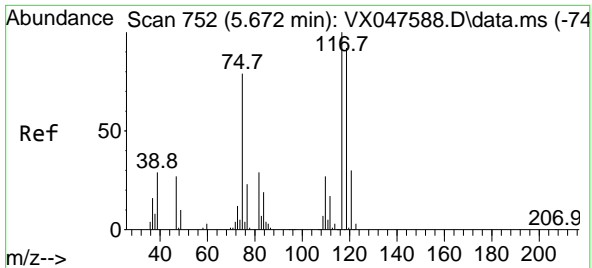


#36
 1,1-Dichloropropene
 Concen: 4.304 ug/l
 RT: 5.538 min Scan# 730
 Delta R.T. -0.146 min
 Lab File: VX048128.D
 Acq: 13 Oct 2025 09:46

Tgt Ion: 75 Resp: 14719

Ion	Ratio	Lower	Upper
75	100		
110	9.1	16.7	50.1#
77	0.0	24.3	36.5#

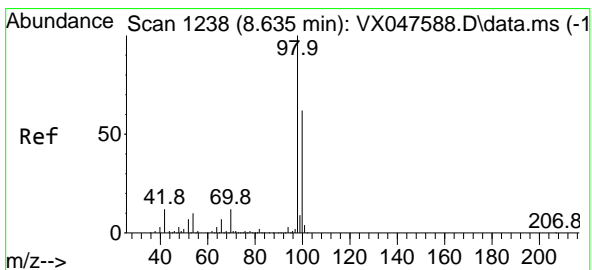
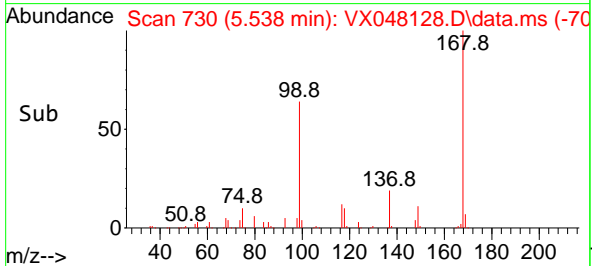
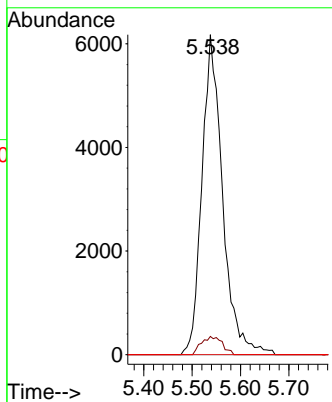
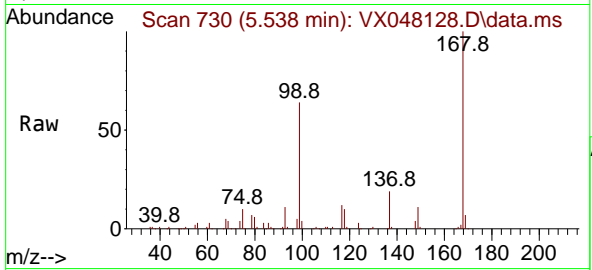




#38
 Carbon Tetrachloride
 Concen: 4.935 ug/l
 RT: 5.538 min Scan# 71
 Delta R.T. -0.134 min
 Lab File: VX048128.D
 Acq: 13 Oct 2025 09:46

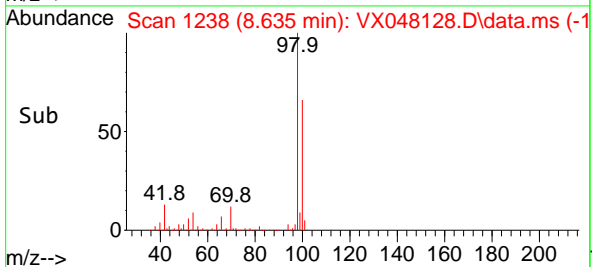
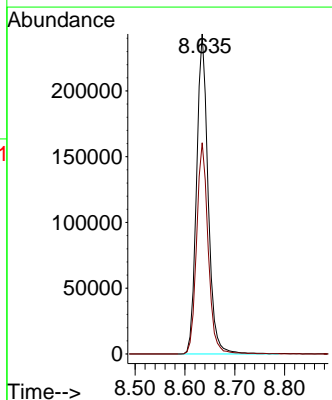
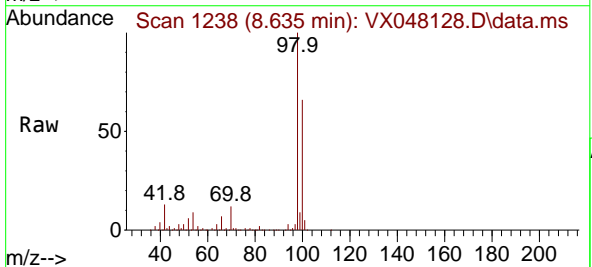
Instrument :
 MSVOA_X
 ClientSampleId :
 VX1013WBL01

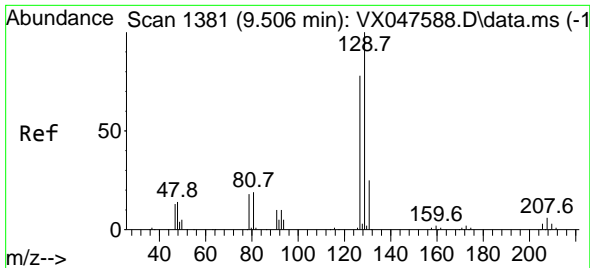
Tgt Ion	Resp	Lower	Upper
117	18335		
119	5.7	73.4	110.2#
121	0.0	23.8	35.6#



#50
 Toluene-d8
 Concen: 48.262 ug/l
 RT: 8.635 min Scan# 1238
 Delta R.T. -0.000 min
 Lab File: VX048128.D
 Acq: 13 Oct 2025 09:46

Tgt Ion	Resp	Lower	Upper
98	390815		
100	66.1	53.0	79.4

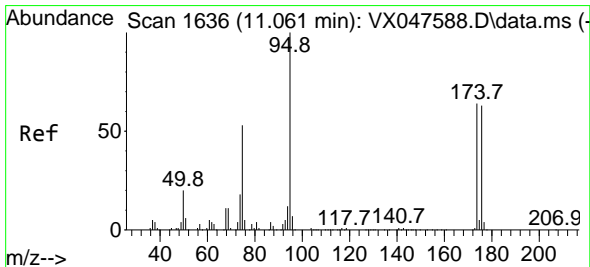
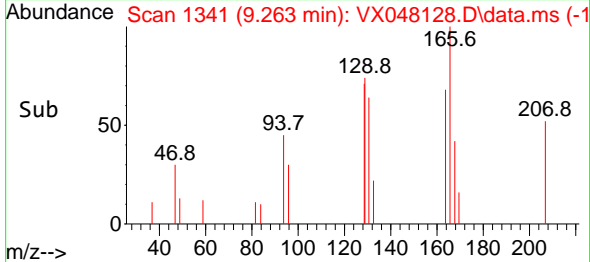
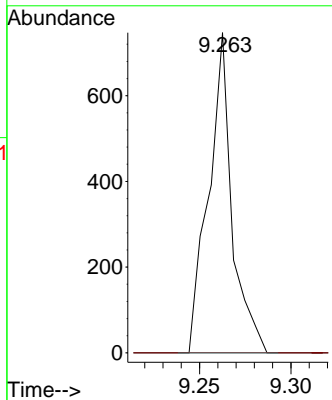
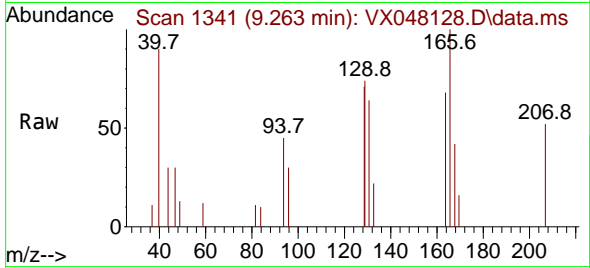




#60
 Dibromochloromethane
 Concen: 0.233 ug/l
 RT: 9.263 min Scan# 1341
 Delta R.T. -0.244 min
 Lab File: VX048128.D
 Acq: 13 Oct 2025 09:46

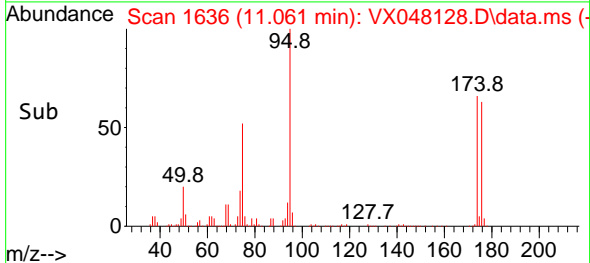
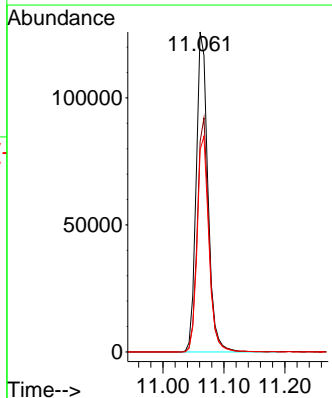
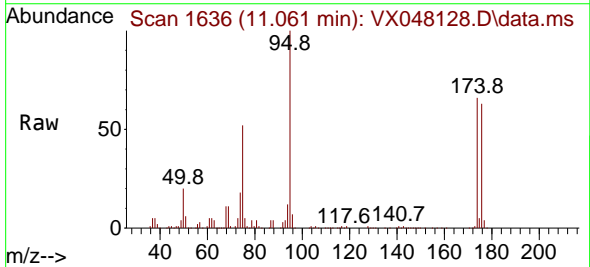
Instrument : MSVOA_X
 ClientSampleId : VX1013WBL01

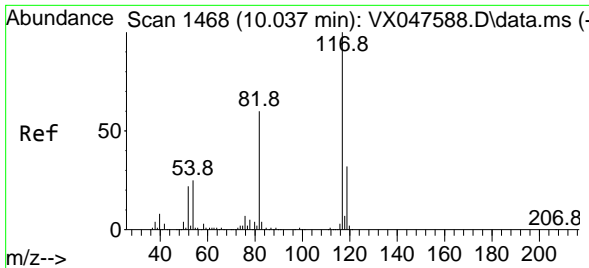
Tgt Ion:129 Resp: 662
 Ion Ratio Lower Upper
 129 100
 127 0.0 38.4 115.2#



#62
 4-Bromofluorobenzene
 Concen: 54.521 ug/l
 RT: 11.061 min Scan# 1636
 Delta R.T. -0.000 min
 Lab File: VX048128.D
 Acq: 13 Oct 2025 09:46

Tgt Ion: 95 Resp: 167555
 Ion Ratio Lower Upper
 95 100
 174 72.5 0.0 141.6
 176 67.7 0.0 138.4



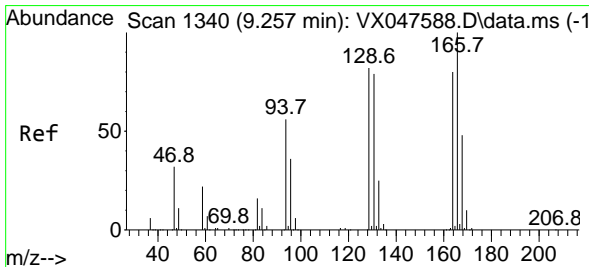
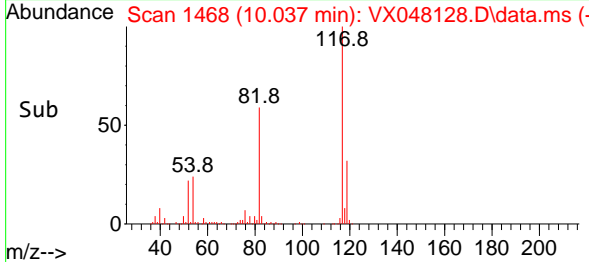
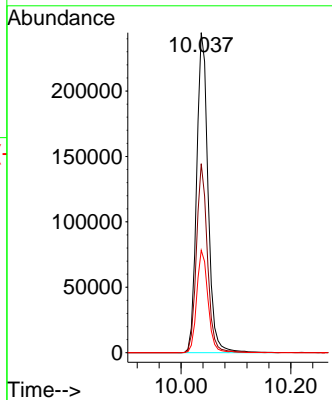
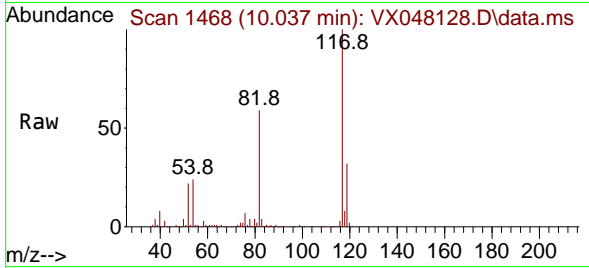


#63
 Chlorobenzene-d5
 Concen: 50.000 ug/l
 RT: 10.037 min Scan# 1468
 Delta R.T. -0.000 min
 Lab File: VX048128.D
 Acq: 13 Oct 2025 09:46

Instrument : MSVOA_X
 ClientSampleId : VX1013WBL01

Tgt Ion:117 Resp: 354107

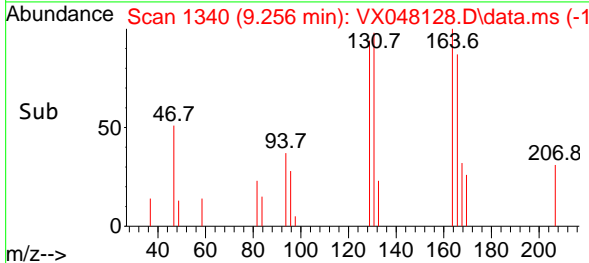
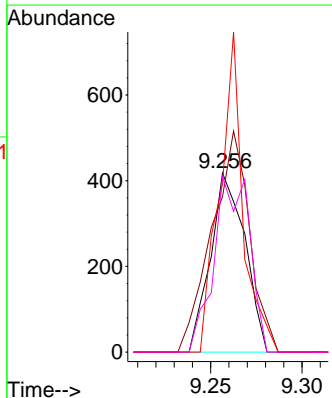
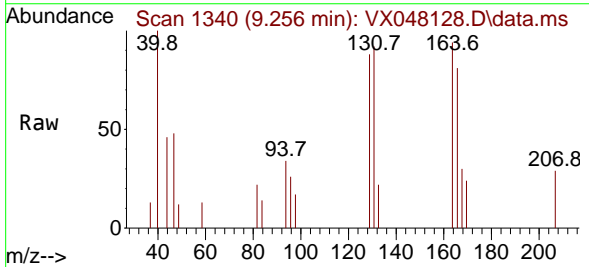
Ion	Ratio	Lower	Upper
117	100		
82	59.1	47.8	71.6
119	32.0	25.2	37.8

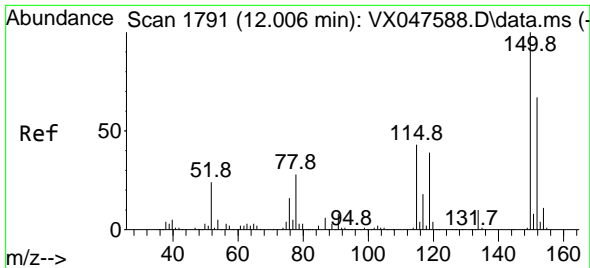


#64
 Tetrachloroethene
 Concen: 0.237 ug/l
 RT: 9.256 min Scan# 1340
 Delta R.T. -0.000 min
 Lab File: VX048128.D
 Acq: 13 Oct 2025 09:46

Tgt Ion:164 Resp: 546

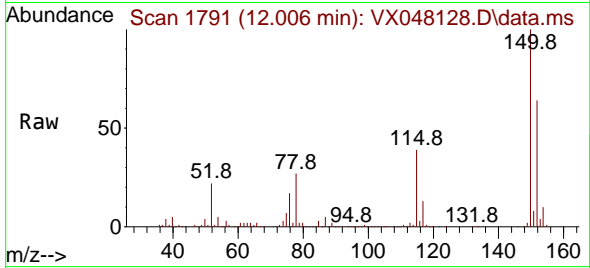
Ion	Ratio	Lower	Upper
164	100		
166	86.8	100.2	150.2#
129	93.8	81.8	122.6
131	98.1	78.6	118.0





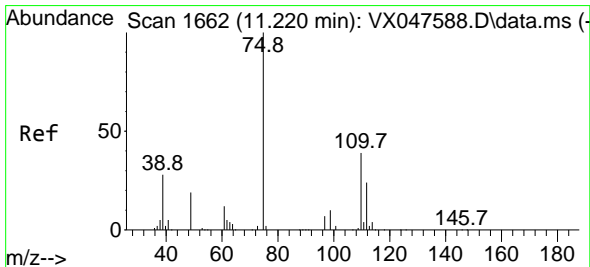
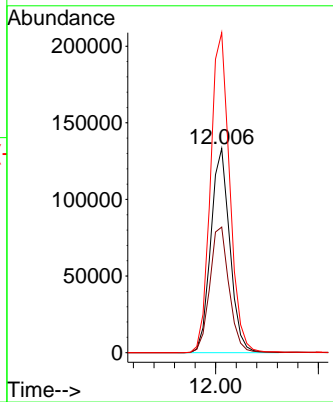
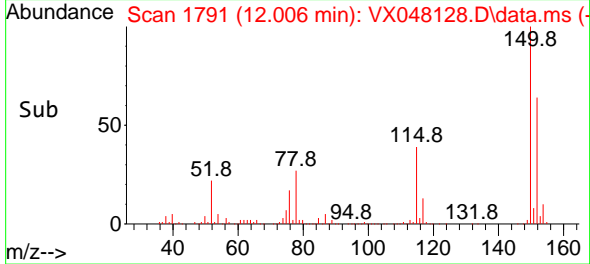
#72
 1,4-Dichlorobenzene-d4
 Concen: 50.000 ug/l
 RT: 12.006 min Scan# 171429
 Delta R.T. -0.000 min
 Lab File: VX048128.D
 Acq: 13 Oct 2025 09:46

Instrument : MSVOA_X
 ClientSampleId : VX1013WBL01

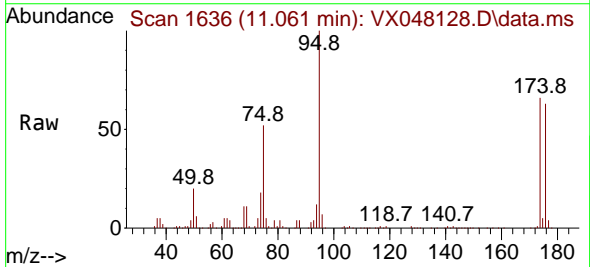


Tgt Ion: 152 Resp: 171429

Ion	Ratio	Lower	Upper
152	100		
115	62.7	44.9	134.5
150	158.9	0.0	352.0

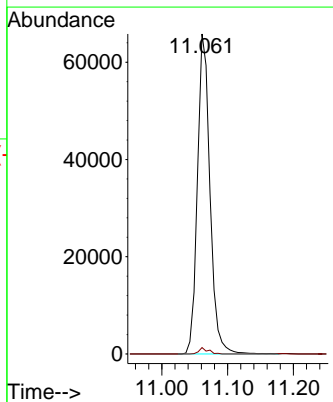
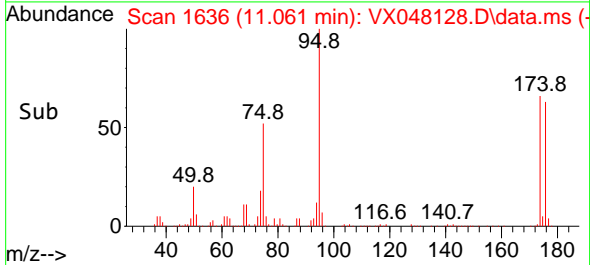


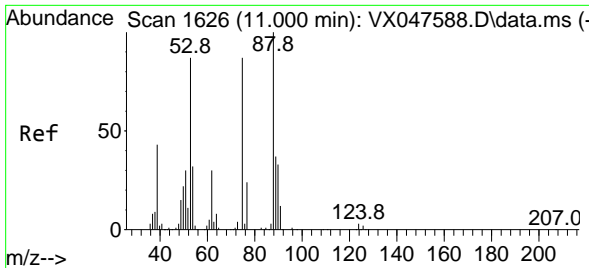
#76
 1,2,3-Trichloropropane
 Concen: 25.141 ug/l
 RT: 11.061 min Scan# 1636
 Delta R.T. -0.159 min
 Lab File: VX048128.D
 Acq: 13 Oct 2025 09:46



Tgt Ion: 75 Resp: 87263

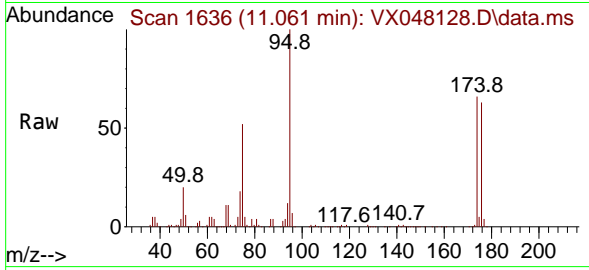
Ion	Ratio	Lower	Upper
75	100		
77	1.4	18.8	56.4#





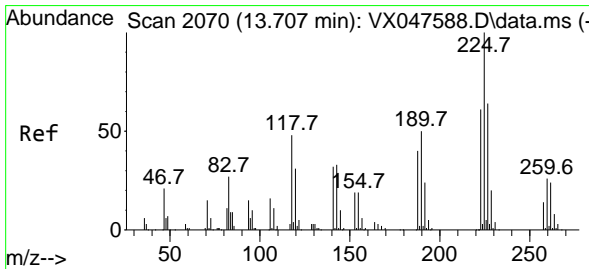
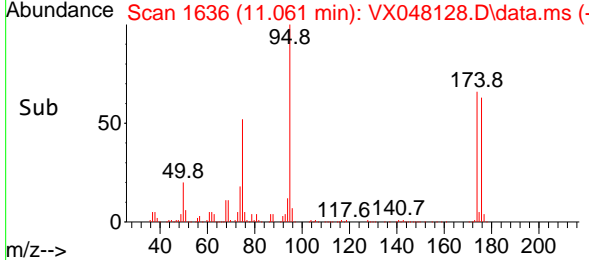
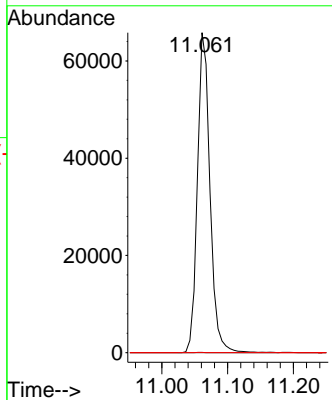
#81
 trans-1,4-Dichloro-2-butene
 Concen: 64.114 ug/l
 RT: 11.061 min Scan# 1
 Delta R.T. 0.061 min
 Lab File: VX048128.D
 Acq: 13 Oct 2025 09:46

Instrument :
 MSVOA_X
 ClientSampleId :
 VX1013WBL01



Tgt Ion: 75 Resp: 87263

Ion	Ratio	Lower	Upper
75	100		
53	0.1	83.4	125.2#
89	0.0	36.3	54.5#



#94
 Hexachlorobutadiene
 Concen: 0.616 ug/l
 RT: 13.707 min Scan# 2070
 Delta R.T. -0.000 min
 Lab File: VX048128.D
 Acq: 13 Oct 2025 09:46

Tgt Ion: 225 Resp: 772

Ion	Ratio	Lower	Upper
225	100		
223	60.2	31.7	95.1
227	60.2	32.0	96.0

