

Data Path : Z:\voasrv\HPCHEM1\MSVOA\_X\Data\VX101325\  
 Data File : VX048130.D  
 Acq On : 13 Oct 2025 11:03  
 Operator : JC/MD  
 Sample : Q3324-03  
 Misc : 5.0mL/MSVOA\_X/WATER  
 ALS Vial : 6 Sample Multiplier: 1

Instrument :  
 MSVOA\_X  
 ClientSampleId :  
 BP-VPB-184-EB-20251009

Integration Parameters: RTEINT.P  
 Integrator: RTE  
 Smoothing : ON Filtering: 5  
 Sampling : 1 Min Area: 3 % of largest Peak  
 Start Thrs: 0.2 Max Peaks: 100  
 Stop Thrs : 0 Peak Location: TOP

If leading or trailing edge < 100 prefer < Baseline drop else tangent >  
 Peak separation: 5

Method : Z:\voasrv\HPCHEM1\MSVOA\_X\Method\82X091625W.M  
 Title : SW846 8260

Signal : TIC: VX048130.D\data.ms

peak #	R.T. min	first scan	max scan	last scan	PK TY	peak height	corr. area	corr. % max.	% of total
1	5.373	692	703	720	rBV	99420	325073	32.78%	5.945%
2	5.537	720	730	752	rVB	147523	468480	47.24%	8.567%
3	5.946	786	797	823	rBV	109764	323618	32.63%	5.918%
4	6.750	919	929	953	rBV	281109	736925	74.31%	13.476%
5	8.634	1231	1238	1254	rBV	563418	923208	93.09%	16.883%
6	10.036	1462	1468	1486	rBV	708995	988464	99.67%	18.076%
7	11.067	1631	1637	1653	rBV	501236	710847	71.68%	12.999%
8	12.006	1785	1791	1801	rBV	755459	991705	100.00%	18.135%

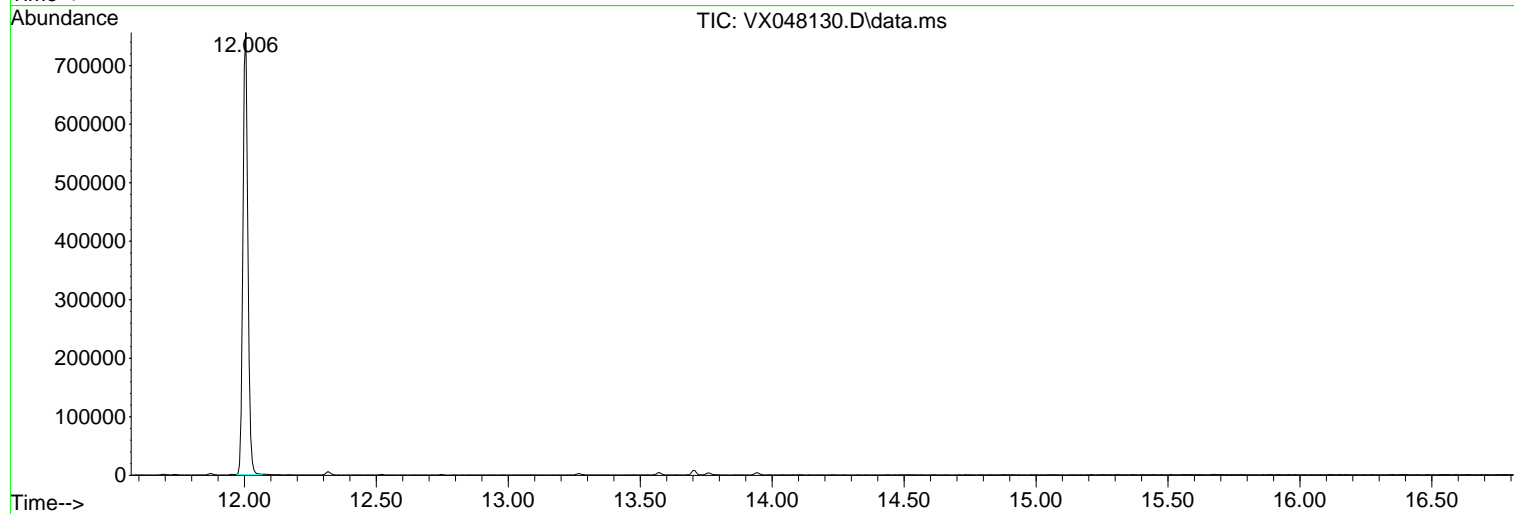
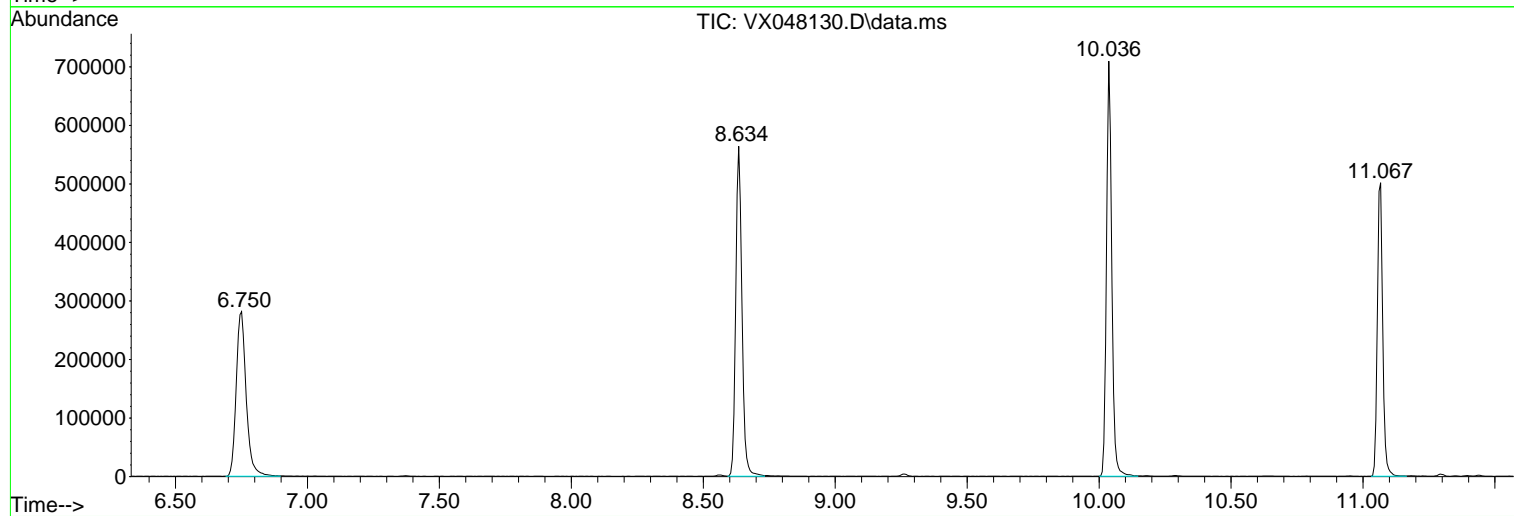
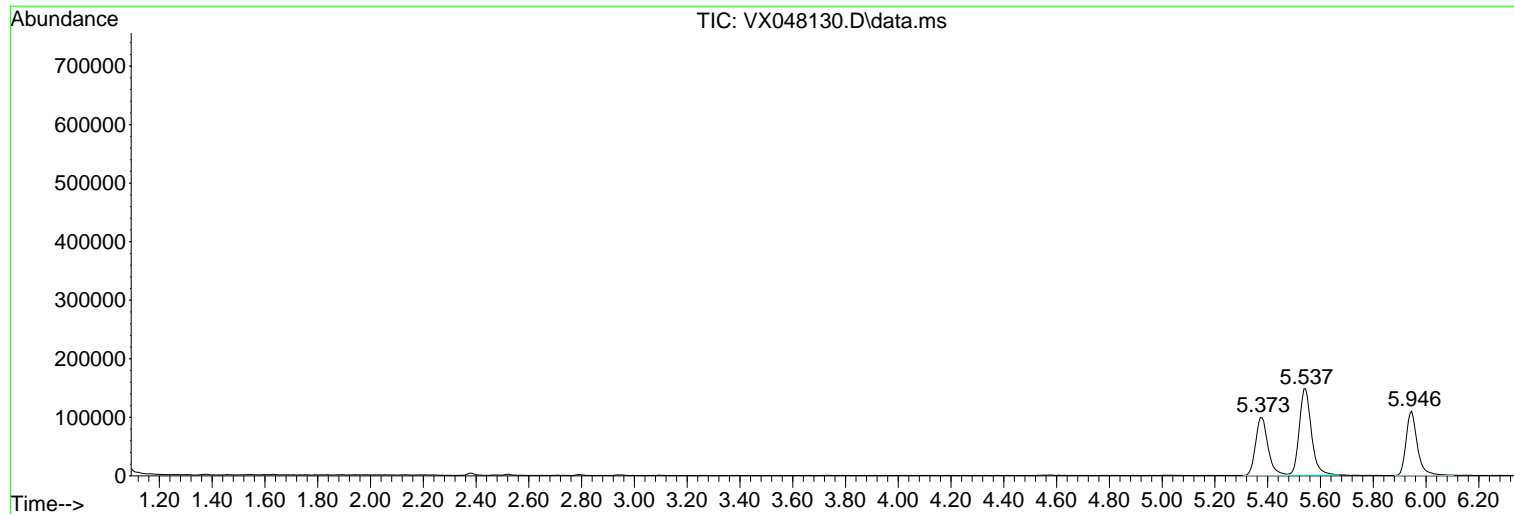
Sum of corrected areas: 5468320

Data Path : Z:\voasrv\HPCHEM1\MSVOA\_X\Data\VX101325\  
Data File : VX048130.D  
Acq On : 13 Oct 2025 11:03  
Operator : JC/MD  
Sample : Q3324-03  
Misc : 5.0mL/MSVOA\_X/WATER  
ALS Vial : 6 Sample Multiplier: 1

Instrument :  
MSVOA\_X  
ClientSampleId :  
BP-VPB-184-EB-20251009

Quant Method : Z:\voasrv\HPCHEM1\MSVOA\_X\Method\82X091625W.M  
Quant Title : SW846 8260

TIC Library : C:\Database\NIST20.L  
TIC Integration Parameters: LSCINT.P



Library Search Compound Report

Data Path : Z:\voasrv\HPCHEM1\MSVOA\_X\Data\VX101325\  
Data File : VX048130.D  
Acq On : 13 Oct 2025 11:03  
Operator : JC/MD  
Sample : Q3324-03  
Misc : 5.0mL/MSVOA\_X/WATER  
ALS Vial : 6 Sample Multiplier: 1

Instrument :  
MSVOA\_X  
ClientSampleId :  
BP-VPB-184-EB-20251009

Quant Method : Z:\voasrv\HPCHEM1\MSVOA\_X\Method\82X091625W.M  
Quant Title : SW846 8260

TIC Library : C:\Database\NIST20.L  
TIC Integration Parameters: LSCINT.P

No Library Search Compounds Detected

\*\*\*\*\*

Data Path : Z:\voasrv\HPCHEM1\MSVOA\_X\Data\VX101325\  
Data File : VX048130.D  
Acq On : 13 Oct 2025 11:03  
Operator : JC/MD  
Sample : Q3324-03  
Misc : 5.0mL/MSVOA\_X/WATER  
ALS Vial : 6 Sample Multiplier: 1

Instrument :  
MSVOA\_X  
ClientSampleId :  
BP-VPB-184-EB-20251009

Quant Method : Z:\voasrv\HPCHEM1\MSVOA\_X\Method\82X091625W.M  
Quant Title : SW846 8260

TIC Library : C:\Database\NIST20.L  
TIC Integration Parameters: LSCINT.P

TIC Top Hit name	RT	EstConc	Units	Response	--Internal Standard--			
					#	RT	Resp	Conc

---